



Full wwPDB X-ray Structure Validation Report ⓘ

Mar 7, 2026 – 03:00 AM UTC

PDB ID : 5FC4 / pdb_00005fc4
Title : Mcl-1 complexed with small molecule inhibitor
Authors : Zhao, B.
Deposited on : 2015-12-14
Resolution : 1.50 Å(reported)

This is a Full wwPDB X-ray Structure Validation Report for a publicly released PDB entry.

We welcome your comments at validation@mail.wwpdb.org

A user guide is available at

<https://www.wwpdb.org/validation/2017/XrayValidationReportHelp>

with specific help available everywhere you see the ⓘ symbol.

The types of validation reports are described at

<http://www.wwpdb.org/validation/2017/FAQs#types>.

The following versions of software and data (see [references ⓘ](#)) were used in the production of this report:

MolProbity : 4-5-2 with Phenix2.0
Mogul : 2022.3.0, CSD as543be (2022)
Xtriage (Phenix) : 2.0
EDS : 3.0
Buster-report : wwPDB partial adaption of 1.1.7 (2018)
Percentile statistics : 20250101.v01 (using entries in the PDB archive January 1st 2025)
CCP4 : 9.0.010 (Gargrove)
Density-Fitness : 1.0.12
Ideal geometry (proteins) : Engh & Huber (2001)
Ideal geometry (DNA, RNA) : Parkinson et al. (1996)
Validation Pipeline (wwPDB-VP) : 2.49

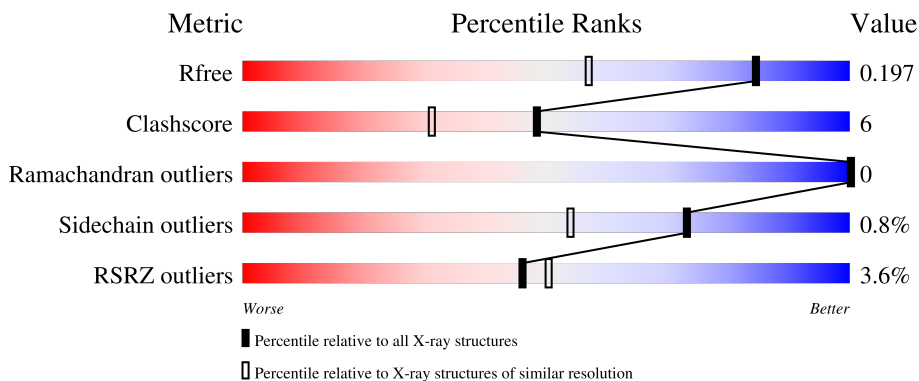
1 Overall quality at a glance

The following experimental techniques were used to determine the structure:

X-RAY DIFFRACTION

The reported resolution of this entry is 1.50 Å.

Percentile scores (ranging between 0-100) for global validation metrics of the entry are shown in the following graphic. The table shows the number of entries on which the scores are based.



Metric	Whole archive (#Entries)	Similar resolution (#Entries, resolution range(Å))
R_{free}	180053	4037 (1.50-1.50)
Clashscore	190562	4235 (1.50-1.50)
Ramachandran outliers	187476	4153 (1.50-1.50)
Sidechain outliers	187428	4150 (1.50-1.50)
RSRZ outliers	180081	4039 (1.50-1.50)

The table below summarises the geometric issues observed across the polymeric chains and their fit to the electron density. The red, orange, yellow and green segments of the lower bar indicate the fraction of residues that contain outliers for ≥ 3 , 2, 1 and 0 types of geometric quality criteria respectively. A grey segment represents the fraction of residues that are not modelled. The numeric value for each fraction is indicated below the corresponding segment, with a dot representing fractions $\leq 5\%$. The upper red bar (where present) indicates the fraction of residues that have poor fit to the electron density. The numeric value is given above the bar.

Mol	Chain	Length	Quality of chain
1	A	150	

2 Entry composition i

There are 4 unique types of molecules in this entry. The entry contains 1439 atoms, of which 0 are hydrogens and 0 are deuteriums.

In the tables below, the ZeroOcc column contains the number of atoms modelled with zero occupancy, the AltConf column contains the number of residues with at least one atom in alternate conformation and the Trace column contains the number of residues modelled with at most 2 atoms.

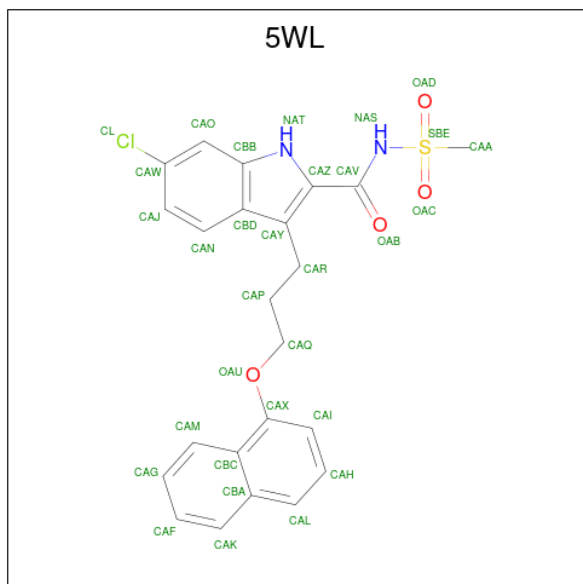
- Molecule 1 is a protein called Induced myeloid leukemia cell differentiation protein Mcl-1.

Mol	Chain	Residues	Atoms					ZeroOcc	AltConf	Trace
			Total	C	N	O	S			
1	A	140	1142	717	209	213	3	0	4	0

There are 5 discrepancies between the modelled and reference sequences:

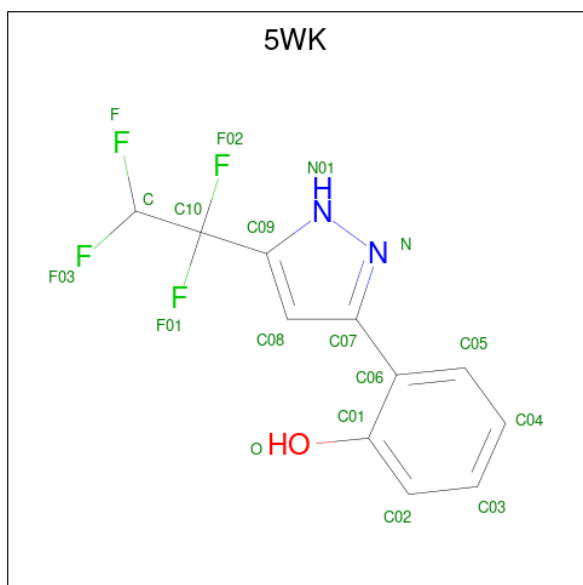
Chain	Residue	Modelled	Actual	Comment	Reference
A	171	GLY	-	expression tag	UNP Q07820
A	202	ALA	SER	conflict	UNP Q07820
A	238	ALA	LYS	conflict	UNP Q07820
A	288	ALA	GLU	conflict	UNP Q07820
A	308	ALA	LYS	conflict	UNP Q07820

- Molecule 2 is 6-chloranyl- {N}-methylsulfonyl-3-(3-naphthalen-1-yloxypropyl)-1 {H}-indole-2-carboxamide (CCD ID: 5WL) (formula: C₂₃H₂₁ClN₂O₄S).



Mol	Chain	Residues	Atoms					ZeroOcc	AltConf	
			Total	C	Cl	N	O			S
2	A	1	31	23	1	2	4	1	0	0
2	A	1	31	23	1	2	4	1	0	0

- Molecule 3 is 2-[5-[1,1,2,2-tetrakis(fluoranyl)ethyl]-1 {H}-pyrazol-3-yl]phenol (CCD ID: 5WK) (formula: C₁₁H₈F₄N₂O).



Mol	Chain	Residues	Atoms					ZeroOcc	AltConf
			Total	C	F	N	O		
3	A	1	18	11	4	2	1	0	0


- Molecule 4 is water.

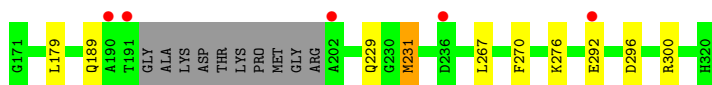
Mol	Chain	Residues	Atoms		ZeroOcc	AltConf
4	A	217	Total	O	0	0
			217	217		

3 Residue-property plots [i](#)

These plots are drawn for all protein, RNA, DNA and oligosaccharide chains in the entry. The first graphic for a chain summarises the proportions of the various outlier classes displayed in the second graphic. The second graphic shows the sequence view annotated by issues in geometry and electron density. Residues are color-coded according to the number of geometric quality criteria for which they contain at least one outlier: green = 0, yellow = 1, orange = 2 and red = 3 or more. A red dot above a residue indicates a poor fit to the electron density ($RSRZ > 2$). Stretches of 2 or more consecutive residues without any outlier are shown as a green connector. Residues present in the sample, but not in the model, are shown in grey.

- Molecule 1: Induced myeloid leukemia cell differentiation protein Mcl-1

Chain A: 



4 Data and refinement statistics

Property	Value	Source
Space group	P 21 21 2	Depositor
Cell constants a, b, c, α , β , γ	51.33Å 61.60Å 42.22Å 90.00° 90.00° 90.00°	Depositor
Resolution (Å)	21.11 – 1.50 21.11 – 1.50	Depositor EDS
% Data completeness (in resolution range)	98.2 (21.11-1.50) 98.1 (21.11-1.50)	Depositor EDS
R_{merge}	0.05	Depositor
R_{sym}	0.04	Depositor
$\langle I/\sigma(I) \rangle$ ¹	14.93 (at 1.50Å)	Xtrriage
Refinement program	PHENIX (1.10_2155: ???)	Depositor
R, R_{free}	0.158 , 0.196 0.158 , 0.197	Depositor DCC
R_{free} test set	1103 reflections (5.00%)	wwPDB-VP
Wilson B-factor (Å ²)	9.6	Xtrriage
Anisotropy	0.243	Xtrriage
Bulk solvent k_{sol} (e/Å ³), B_{sol} (Å ²)	0.36 , 51.9	EDS
L-test for twinning ²	$\langle L \rangle = 0.49$, $\langle L^2 \rangle = 0.33$	Xtrriage
Estimated twinning fraction	No twinning to report.	Xtrriage
F_o, F_c correlation	0.96	EDS
Total number of atoms	1439	wwPDB-VP
Average B, all atoms (Å ²)	14.0	wwPDB-VP

Xtrriage's analysis on translational NCS is as follows: *The largest off-origin peak in the Patterson function is 7.75% of the height of the origin peak. No significant pseudotranslation is detected.*

¹Intensities estimated from amplitudes.

²Theoretical values of $\langle |L| \rangle$, $\langle L^2 \rangle$ for acentric reflections are 0.5, 0.333 respectively for untwinned datasets, and 0.375, 0.2 for perfectly twinned datasets.

5 Model quality [i](#)

5.1 Standard geometry [i](#)

Bond lengths and bond angles in the following residue types are not validated in this section: 5WK, 5WL

The Z score for a bond length (or angle) is the number of standard deviations the observed value is removed from the expected value. A bond length (or angle) with $|Z| > 5$ is considered an outlier worth inspection. RMSZ is the root-mean-square of all Z scores of the bond lengths (or angles).

Mol	Chain	Bond lengths		Bond angles	
		RMSZ	$\# Z > 5$	RMSZ	$\# Z > 5$
1	A	0.88	1/1166 (0.1%)	0.87	0/1571

All (1) bond length outliers are listed below:

Mol	Chain	Res	Type	Atoms	Z	Observed(Å)	Ideal(Å)
1	A	231	MET	SD-CE	-6.27	1.63	1.79

There are no bond angle outliers.

There are no chirality outliers.

There are no planarity outliers.

5.2 Too-close contacts [i](#)

In the following table, the Non-H and H(model) columns list the number of non-hydrogen atoms and hydrogen atoms in the chain respectively. The H(added) column lists the number of hydrogen atoms added and optimized by MolProbity. The Clashes column lists the number of clashes within the asymmetric unit, whereas Symm-Clashes lists symmetry-related clashes.

Mol	Chain	Non-H	H(model)	H(added)	Clashes	Symm-Clashes
1	A	1142	0	1137	13	0
2	A	62	0	0	0	0
3	A	18	0	0	0	0
4	A	217	0	0	4	2
All	All	1439	0	1137	13	2

The all-atom clashscore is defined as the number of clashes found per 1000 atoms (including hydrogen atoms). The all-atom clashscore for this structure is 6.

All (13) close contacts within the same asymmetric unit are listed below, sorted by their clash

magnitude.

Atom-1	Atom-2	Interatomic distance (Å)	Clash overlap (Å)
1:A:296[B]:ASP:OD1	1:A:300:ARG:NH1	2.11	0.81
1:A:292:GLU:OE1	4:A:501:HOH:O	2.07	0.71
1:A:231:MET:HE2	1:A:270:PHE:CZ	2.34	0.63
1:A:296[B]:ASP:CG	1:A:300:ARG:HH11	2.06	0.63
1:A:296[B]:ASP:CG	1:A:300:ARG:HD2	2.25	0.61
1:A:229:GLN:OE1	4:A:502:HOH:O	2.18	0.57
1:A:300:ARG:NH2	4:A:508:HOH:O	2.35	0.57
1:A:179:LEU:HD11	1:A:292:GLU:HG3	1.88	0.55
1:A:292:GLU:CD	4:A:507:HOH:O	2.55	0.50
1:A:296[B]:ASP:OD1	1:A:300:ARG:HD2	2.16	0.45
1:A:189:GLN:HB3	1:A:276:LYS:HG3	1.98	0.45
1:A:296[B]:ASP:OD2	1:A:300:ARG:HD2	2.17	0.44
1:A:231:MET:CE	1:A:270:PHE:CE2	3.03	0.41

All (2) symmetry-related close contacts are listed below. The label for Atom-2 includes the symmetry operator and encoded unit-cell translations to be applied.

Atom-1	Atom-2	Interatomic distance (Å)	Clash overlap (Å)
4:A:668:HOH:O	4:A:687:HOH:O[3_545]	2.10	0.10
4:A:503:HOH:O	4:A:519:HOH:O[3_546]	2.16	0.04

5.3 Torsion angles [i](#)

5.3.1 Protein backbone [i](#)

In the following table, the Percentiles column shows the percent Ramachandran outliers of the chain as a percentile score with respect to all X-ray entries followed by that with respect to entries of similar resolution.

The Analysed column shows the number of residues for which the backbone conformation was analysed, and the total number of residues.

Mol	Chain	Analysed	Favoured	Allowed	Outliers	Percentiles
1	A	140/150 (93%)	139 (99%)	1 (1%)	0	100 100

There are no Ramachandran outliers to report.

5.3.2 Protein sidechains [i](#)

In the following table, the Percentiles column shows the percent sidechain outliers of the chain as a percentile score with respect to all X-ray entries followed by that with respect to entries of similar resolution.

The Analysed column shows the number of residues for which the sidechain conformation was analysed, and the total number of residues.

Mol	Chain	Analysed	Rotameric	Outliers	Percentiles
1	A	123/126 (98%)	122 (99%)	1 (1%)	73 54

All (1) residues with a non-rotameric sidechain are listed below:

Mol	Chain	Res	Type
1	A	267	LEU

Sometimes sidechains can be flipped to improve hydrogen bonding and reduce clashes. All (1) such sidechains are listed below:

Mol	Chain	Res	Type
1	A	283	GLN

5.3.3 RNA [i](#)

There are no RNA molecules in this entry.

5.4 Non-standard residues in protein, DNA, RNA chains [i](#)

There are no non-standard protein/DNA/RNA residues in this entry.

5.5 Carbohydrates [i](#)

There are no oligosaccharides in this entry.

5.6 Ligand geometry [i](#)

3 ligands are modelled in this entry.

In the following table, the Counts columns list the number of bonds (or angles) for which Mogul statistics could be retrieved, the number of bonds (or angles) that are observed in the model and the number of bonds (or angles) that are defined in the Chemical Component Dictionary. The Link column lists molecule types, if any, to which the group is linked. The Z score for a bond

length (or angle) is the number of standard deviations the observed value is removed from the expected value. A bond length (or angle) with $|Z| > 2$ is considered an outlier worth inspection. RMSZ is the root-mean-square of all Z scores of the bond lengths (or angles).

Mol	Type	Chain	Res	Link	Bond lengths			Bond angles		
					Counts	RMSZ	# Z > 2	Counts	RMSZ	# Z > 2
3	5WK	A	403	-	18,19,19	2.57	9 (50%)	26,28,28	1.89	7 (26%)
2	5WL	A	401	-	34,34,34	1.84	7 (20%)	47,49,49	1.55	11 (23%)
2	5WL	A	402	-	34,34,34	1.63	6 (17%)	47,49,49	2.03	14 (29%)

In the following table, the Chirals column lists the number of chiral outliers, the number of chiral centers analysed, the number of these observed in the model and the number defined in the Chemical Component Dictionary. Similar counts are reported in the Torsion and Rings columns. '-' means no outliers of that kind were identified.

Mol	Type	Chain	Res	Link	Chirals	Torsions	Rings
3	5WK	A	403	-	-	4/14/16/16	0/2/2/2
2	5WL	A	401	-	-	0/16/16/16	0/4/4/4
2	5WL	A	402	-	-	2/16/16/16	0/4/4/4

All (22) bond length outliers are listed below:

Mol	Chain	Res	Type	Atoms	Z	Observed(Å)	Ideal(Å)
2	A	401	5WL	SBE-NAS	-6.12	1.53	1.65
3	A	403	5WK	C05-C06	6.06	1.49	1.39
2	A	402	5WL	CAZ-CAY	4.74	1.44	1.38
3	A	403	5WK	C09-N01	-3.77	1.31	1.34
3	A	403	5WK	F02-C10	-3.51	1.30	1.36
2	A	402	5WL	CAG-CAM	3.24	1.43	1.36
3	A	403	5WK	C03-C02	-3.03	1.33	1.38
2	A	401	5WL	OAD-SBE	2.83	1.48	1.43
2	A	401	5WL	CBB-NAT	-2.82	1.33	1.38
3	A	403	5WK	O-C01	2.80	1.42	1.36
2	A	402	5WL	CAZ-NAT	-2.79	1.34	1.38
2	A	401	5WL	CAN-CBD	2.70	1.44	1.39
3	A	403	5WK	C06-C07	2.69	1.52	1.47
2	A	401	5WL	CBC-CBA	-2.65	1.38	1.43
3	A	403	5WK	C02-C01	-2.59	1.35	1.39
2	A	401	5WL	CAR-CAY	2.44	1.54	1.51
3	A	403	5WK	F01-C10	-2.35	1.32	1.36
2	A	402	5WL	OAC-SBE	2.34	1.47	1.43
3	A	403	5WK	C07-N	2.29	1.37	1.34
2	A	402	5WL	CBD-CBB	-2.23	1.38	1.41

Continued on next page...

Continued from previous page...

Mol	Chain	Res	Type	Atoms	Z	Observed(Å)	Ideal(Å)
2	A	402	5WL	CBD-CAY	-2.16	1.40	1.44
2	A	401	5WL	CAL-CBA	2.13	1.46	1.42

All (32) bond angle outliers are listed below:

Mol	Chain	Res	Type	Atoms	Z	Observed(°)	Ideal(°)
2	A	402	5WL	CAM-CBC-CBA	4.92	124.28	117.92
2	A	401	5WL	OAD-SBE-OAC	-4.23	113.20	118.87
3	A	403	5WK	F03-C-C10	-4.10	100.36	108.50
2	A	402	5WL	CAV-NAS-SBE	-4.04	118.15	123.42
3	A	403	5WK	C02-C01-C06	4.01	124.06	119.89
2	A	402	5WL	OAB-CAV-NAS	3.90	127.59	121.94
2	A	402	5WL	CAG-CAM-CBC	-3.64	115.99	120.91
2	A	402	5WL	OAD-SBE-NAS	3.56	114.03	106.83
2	A	401	5WL	CAJ-CAW-CAO	3.41	126.00	121.53
2	A	402	5WL	CAG-CAF-CAK	3.35	124.89	120.40
2	A	402	5WL	CAZ-CAV-NAS	-3.29	108.90	116.05
2	A	402	5WL	CAN-CAJ-CAW	3.22	122.48	119.24
3	A	403	5WK	O-C01-C06	-2.74	116.63	121.71
3	A	403	5WK	F01-C10-C	2.63	118.57	107.24
2	A	401	5WL	CBD-CBB-NAT	2.61	111.17	108.23
3	A	403	5WK	C04-C03-C02	2.59	123.43	120.24
2	A	402	5WL	OAD-SBE-OAC	-2.53	115.48	118.87
2	A	401	5WL	OAB-CAV-CAZ	2.51	124.23	120.87
2	A	402	5WL	CBD-CAY-CAZ	-2.42	103.99	106.79
2	A	402	5WL	CAM-CBC-CAX	-2.41	117.17	122.64
2	A	402	5WL	CBB-NAT-CAZ	-2.35	106.42	109.00
2	A	402	5WL	CBB-CBD-CAY	2.35	108.97	106.84
3	A	403	5WK	C08-C07-N	-2.34	106.51	110.27
2	A	401	5WL	CAN-CAJ-CAW	-2.31	116.92	119.24
2	A	401	5WL	CAF-CAG-CAM	-2.30	117.32	120.40
3	A	403	5WK	C04-C05-C06	-2.28	115.68	119.80
2	A	401	5WL	CAA-SBE-NAS	2.22	110.29	105.08
2	A	401	5WL	OAC-SBE-NAS	2.20	111.28	106.83
2	A	402	5WL	CAR-CAP-CAQ	2.12	116.58	112.33
2	A	401	5WL	CBB-CBD-CAY	-2.06	104.97	106.84
2	A	401	5WL	CAH-CAL-CBA	2.02	123.30	120.48
2	A	401	5WL	CAO-CAW-CL	-2.01	116.64	119.17

There are no chirality outliers.

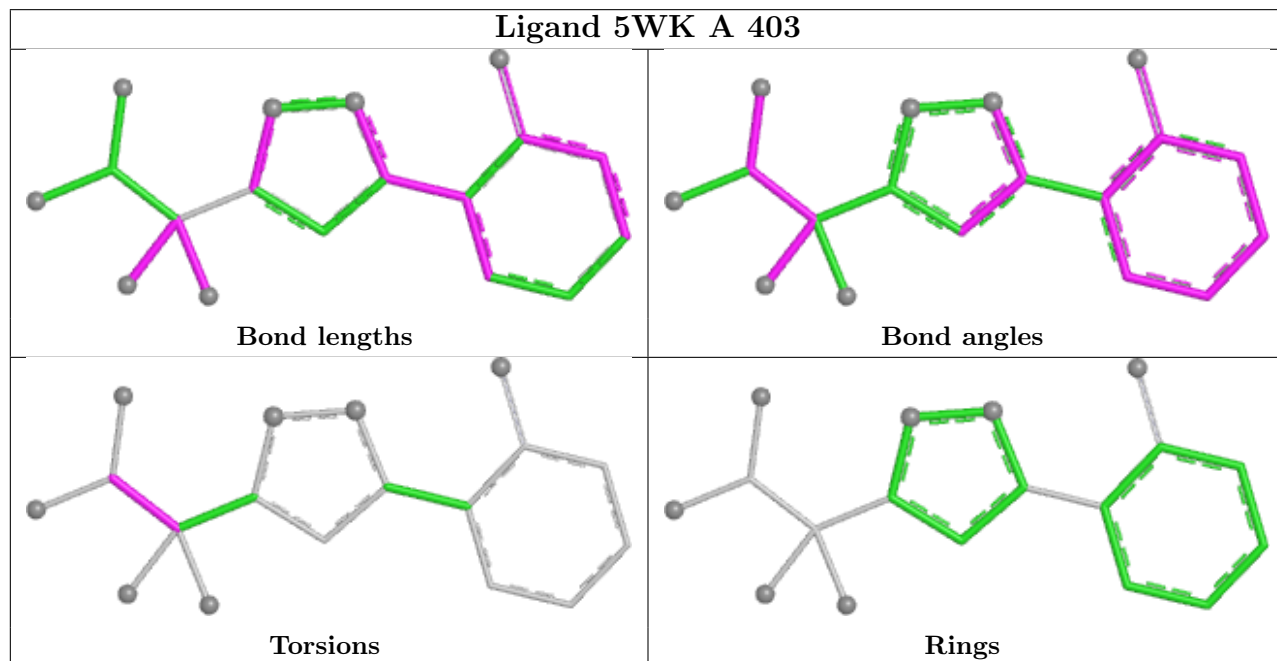
All (6) torsion outliers are listed below:

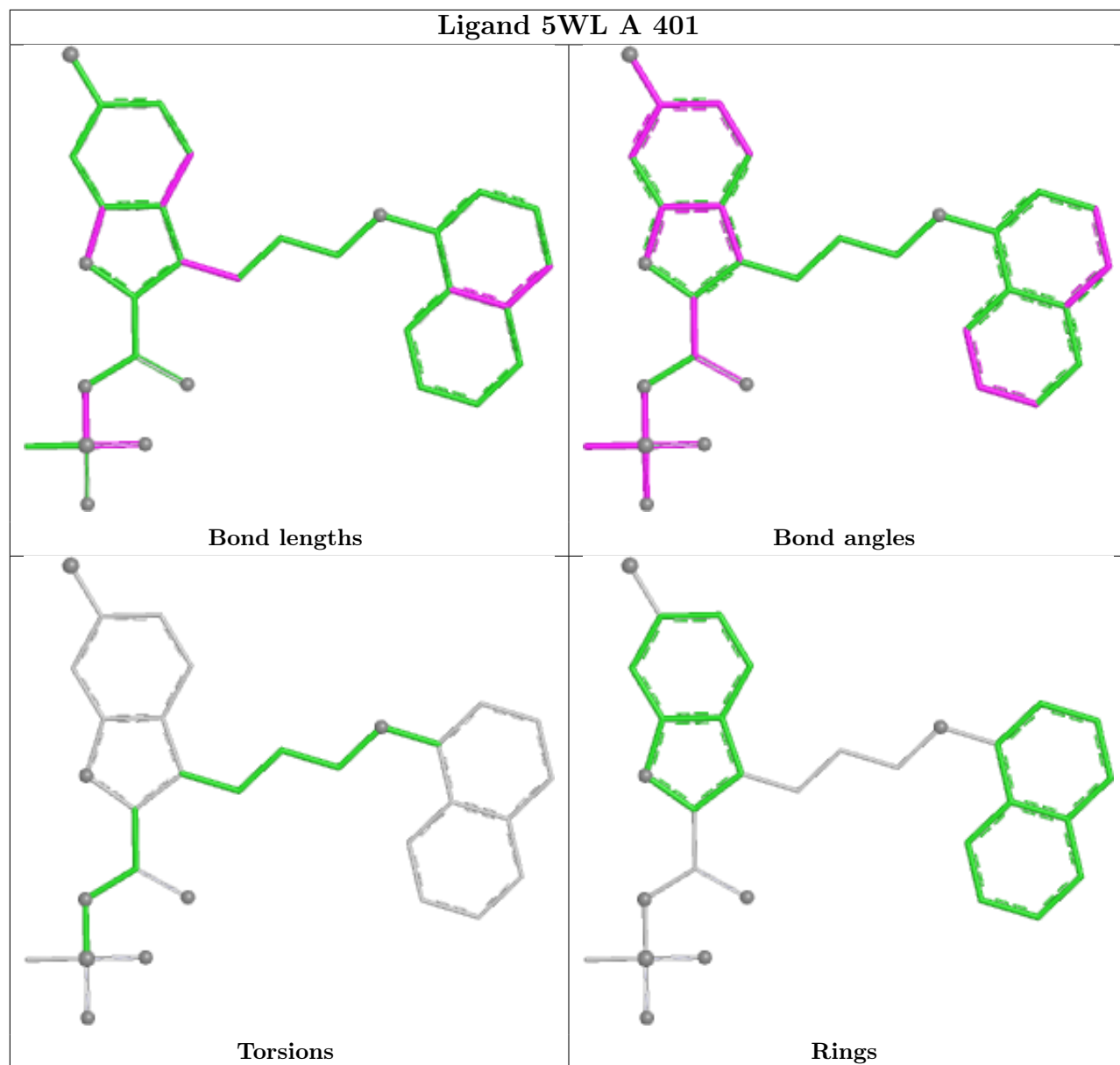
Mol	Chain	Res	Type	Atoms
3	A	403	5WK	F-C-C10-F01
3	A	403	5WK	F03-C-C10-F02
2	A	402	5WL	CBC-CAX-OAU-CAQ
3	A	403	5WK	F03-C-C10-F01
3	A	403	5WK	F-C-C10-F02
2	A	402	5WL	CAI-CAX-OAU-CAQ

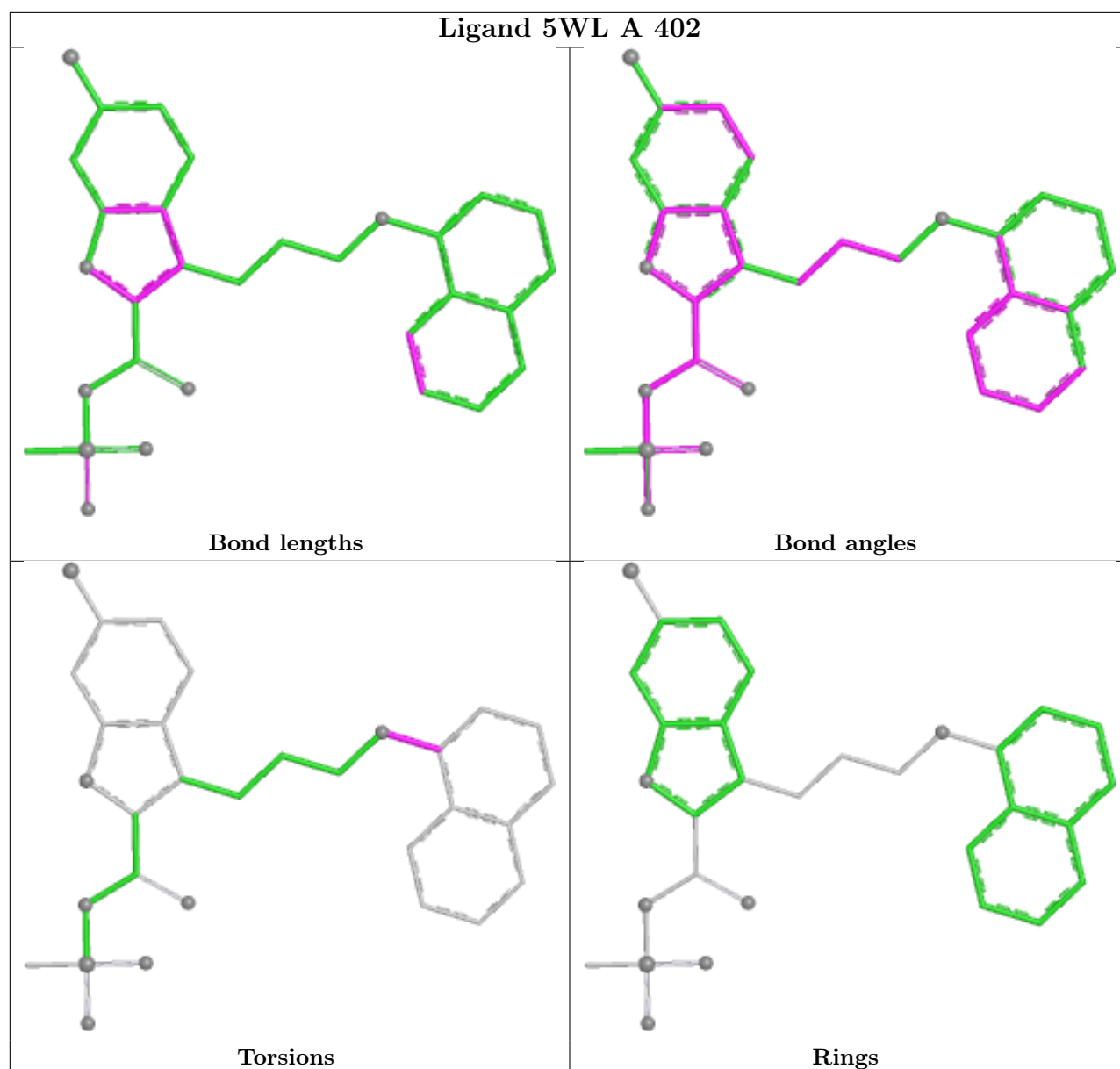
There are no ring outliers.

No monomer is involved in short contacts.

The following is a two-dimensional graphical depiction of Mogul quality analysis of bond lengths, bond angles, torsion angles, and ring geometry for all instances of the Ligand of Interest. In addition, ligands with molecular weight > 250 and outliers as shown on the validation Tables will also be included. For torsion angles, if less than 5% of the Mogul distribution of torsion angles is within 10 degrees of the torsion angle in question, then that torsion angle is considered an outlier. Any bond that is central to one or more torsion angles identified as an outlier by Mogul will be highlighted in the graph. For rings, the root-mean-square deviation (RMSD) between the ring in question and similar rings identified by Mogul is calculated over all ring torsion angles. If the average RMSD is greater than 60 degrees and the minimal RMSD between the ring in question and any Mogul-identified rings is also greater than 60 degrees, then that ring is considered an outlier. The outliers are highlighted in purple. The color gray indicates Mogul did not find sufficient equivalents in the CSD to analyse the geometry.







5.7 Other polymers [i](#)

There are no such residues in this entry.

5.8 Polymer linkage issues [i](#)

There are no chain breaks in this entry.

6 Fit of model and data [i](#)

6.1 Protein, DNA and RNA chains [i](#)

In the following table, the column labelled ‘#RSRZ> 2’ contains the number (and percentage) of RSRZ outliers, followed by percent RSRZ outliers for the chain as percentile scores relative to all X-ray entries and entries of similar resolution. The OWAB column contains the minimum, median, 95th percentile and maximum values of the occupancy-weighted average B-factor per residue. The column labelled ‘Q< 0.9’ lists the number of (and percentage) of residues with an average occupancy less than 0.9.

Mol	Chain	Analysed	<RSRZ>	#RSRZ>2	OWAB(Å ²)	Q<0.9
1	A	140/150 (93%)	-0.11	5 (3%) 46 50	4, 10, 23, 41	5 (3%)

All (5) RSRZ outliers are listed below:

Mol	Chain	Res	Type	RSRZ
1	A	190	ALA	3.3
1	A	292	GLU	2.6
1	A	236	ASP	2.3
1	A	202	ALA	2.3
1	A	191	THR	2.3

6.2 Non-standard residues in protein, DNA, RNA chains [i](#)

There are no non-standard protein/DNA/RNA residues in this entry.

6.3 Carbohydrates [i](#)

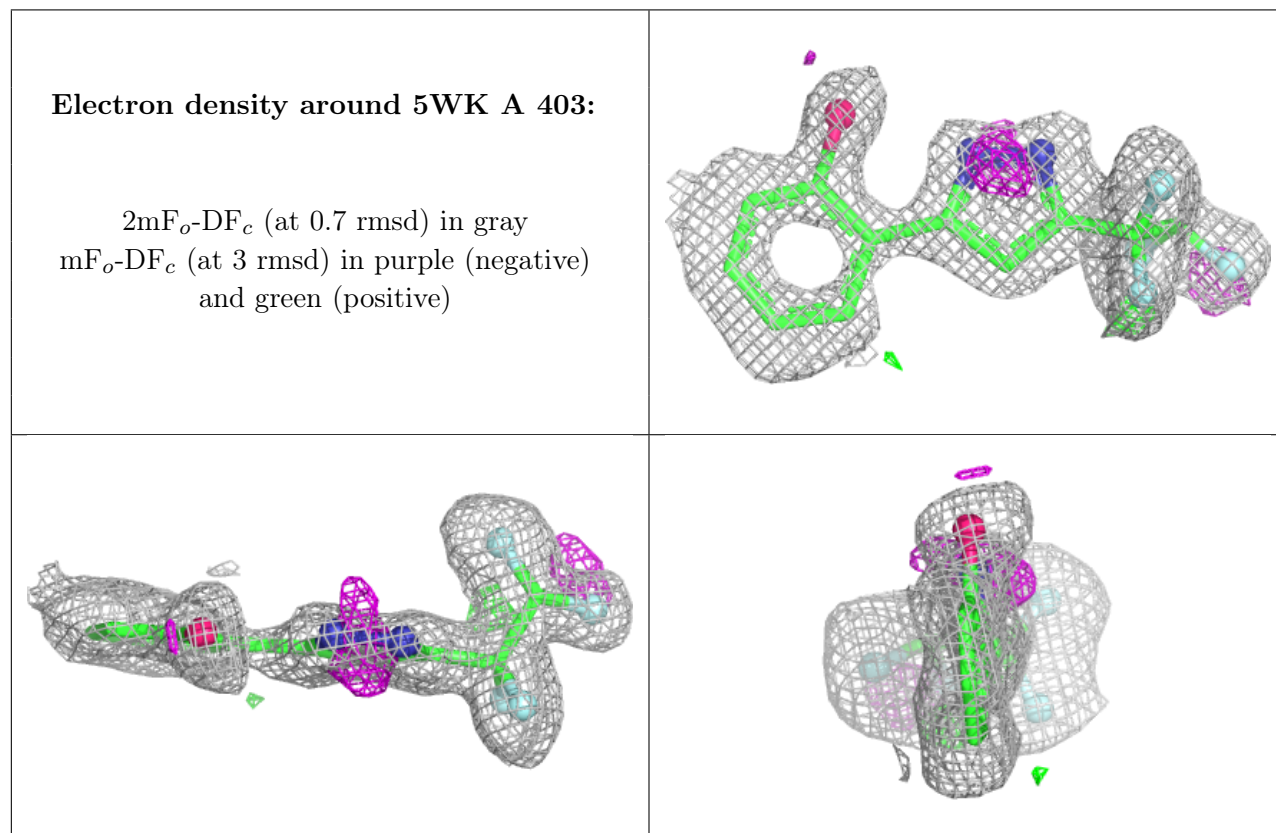
There are no oligosaccharides in this entry.

6.4 Ligands [i](#)

In the following table, the Atoms column lists the number of modelled atoms in the group and the number defined in the chemical component dictionary. The B-factors column lists the minimum, median, 95th percentile and maximum values of B factors of atoms in the group. The column labelled ‘Q< 0.9’ lists the number of atoms with occupancy less than 0.9.

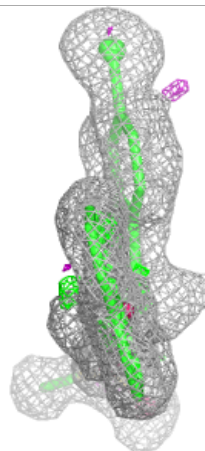
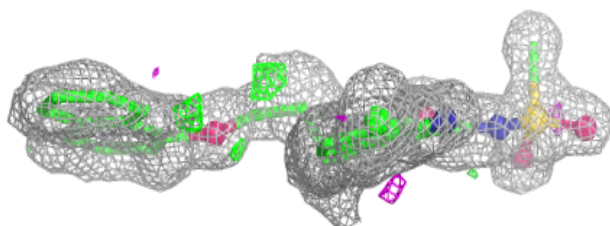
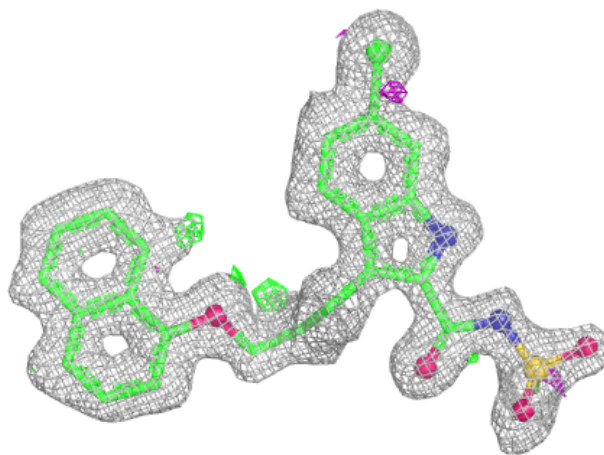
Mol	Type	Chain	Res	Atoms	RSCC	RSR	B-factors(Å ²)	Q<0.9
3	5WK	A	403	18/18	0.91	0.09	10,15,21,25	0
2	5WL	A	402	31/31	0.95	0.08	9,13,18,20	0
2	5WL	A	401	31/31	0.98	0.04	5,7,9,10	0

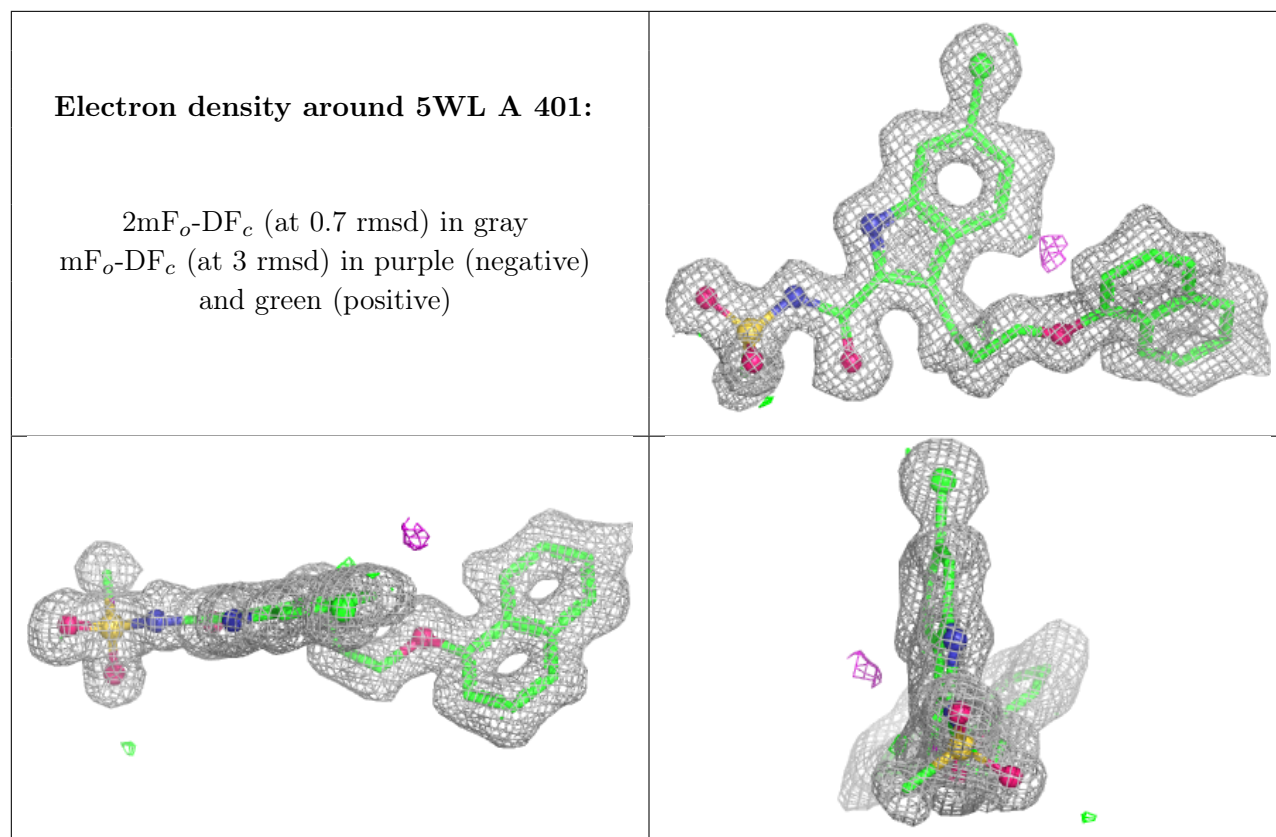
The following is a graphical depiction of the model fit to experimental electron density of all instances of the Ligand of Interest. In addition, ligands with molecular weight > 250 and outliers as shown on the geometry validation Tables will also be included. Each fit is shown from different orientation to approximate a three-dimensional view.



Electron density around 5WL A 402:

$2mF_o-DF_c$ (at 0.7 rmsd) in gray
 mF_o-DF_c (at 3 rmsd) in purple (negative)
and green (positive)





6.5 Other polymers [i](#)

There are no such residues in this entry.