



wwPDB X-ray Structure Validation Summary Report

Mar 15, 2026 – 12:47 AM UTC

PDB ID : 9FDV / pdb_00009fdv
Title : Crystal Structure of reduced NuoEF variant R66G(NuoF) from Aquifex aeolicus
Authors : Wohlwend, D.; Friedrich, T.; Goeppert-Asadollahpour, S.
Deposited on : 2024-05-17
Resolution : 1.99 Å(reported)

This is a wwPDB X-ray Structure Validation Summary Report for a publicly released PDB entry.

We welcome your comments at validation@mail.wwpdb.org

A user guide is available at

<https://www.wwpdb.org/validation/2017/XrayValidationReportHelp>

with specific help available everywhere you see the  symbol.

The types of validation reports are described at

<http://www.wwpdb.org/validation/2017/FAQs#types>.

The following versions of software and data (see [references](#) ) were used in the production of this report:

MolProbity : 4-5-2 with Phenix2.0
Mogul : 2022.3.0, CSD as543be (2022)
Xtriage (Phenix) : 2.0
EDS : 3.0
Buster-report : wwPDB partial adaption of 1.1.7 (2018)
Percentile statistics : 20250101.v01 (using entries in the PDB archive January 1st 2025)
CCP4 : 9.0.010 (Gargrove)
Density-Fitness : 1.0.12
Ideal geometry (proteins) : Engh & Huber (2001)
Ideal geometry (DNA, RNA) : Parkinson et al. (1996)
Validation Pipeline (wwPDB-VP) : 2.49

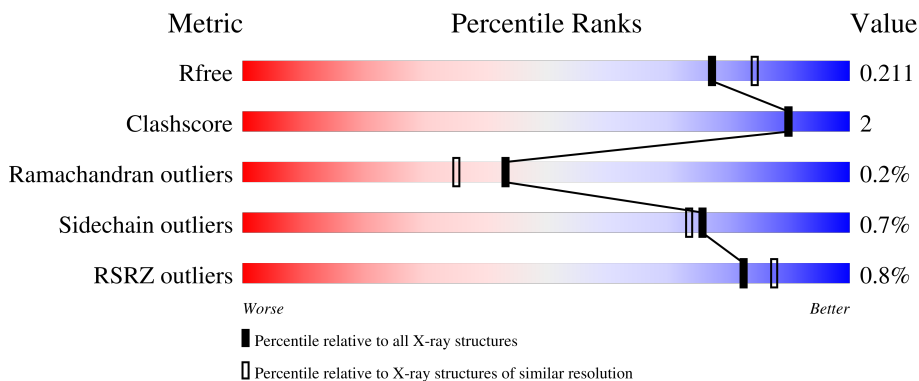
1 Overall quality at a glance

The following experimental techniques were used to determine the structure:

X-RAY DIFFRACTION

The reported resolution of this entry is 1.99 Å.

Percentile scores (ranging between 0-100) for global validation metrics of the entry are shown in the following graphic. The table shows the number of entries on which the scores are based.



Metric	Whole archive (#Entries)	Similar resolution (#Entries, resolution range(Å))
R_{free}	180053	1506 (1.98-1.98)
Clashscore	190562	1534 (1.98-1.98)
Ramachandran outliers	187476	1518 (1.98-1.98)
Sidechain outliers	187428	1518 (1.98-1.98)
RSRZ outliers	180081	1506 (1.98-1.98)

The table below summarises the geometric issues observed across the polymeric chains and their fit to the electron density. The red, orange, yellow and green segments of the lower bar indicate the fraction of residues that contain outliers for ≥ 3 , 2, 1 and 0 types of geometric quality criteria respectively. A grey segment represents the fraction of residues that are not modelled. The numeric value for each fraction is indicated below the corresponding segment, with a dot representing fractions $\leq 5\%$. The upper red bar (where present) indicates the fraction of residues that have poor fit to the electron density. The numeric value is given above the bar.

Mol	Chain	Length	Quality of chain
1	A	160	 92% 6%
1	C	160	 95%
2	B	434	 90% 6%
2	D	434	 92%

2 Entry composition [i](#)

There are 12 unique types of molecules in this entry. The entry contains 10153 atoms, of which 0 are hydrogens and 0 are deuteriums.

In the tables below, the ZeroOcc column contains the number of atoms modelled with zero occupancy, the AltConf column contains the number of residues with at least one atom in alternate conformation and the Trace column contains the number of residues modelled with at most 2 atoms.

- Molecule 1 is a protein called NADH-quinone oxidoreductase subunit E.

Mol	Chain	Residues	Atoms					ZeroOcc	AltConf	Trace
			Total	C	N	O	S			
1	A	156	1268	821	204	234	9	0	0	0
1	C	156	1268	821	204	234	9	0	0	0

- Molecule 2 is a protein called NADH-quinone oxidoreductase subunit F.

Mol	Chain	Residues	Atoms					ZeroOcc	AltConf	Trace
			Total	C	N	O	S			
2	B	419	3300	2123	546	618	13	0	2	0
2	D	418	3294	2121	544	616	13	0	2	0

There are 18 discrepancies between the modelled and reference sequences:

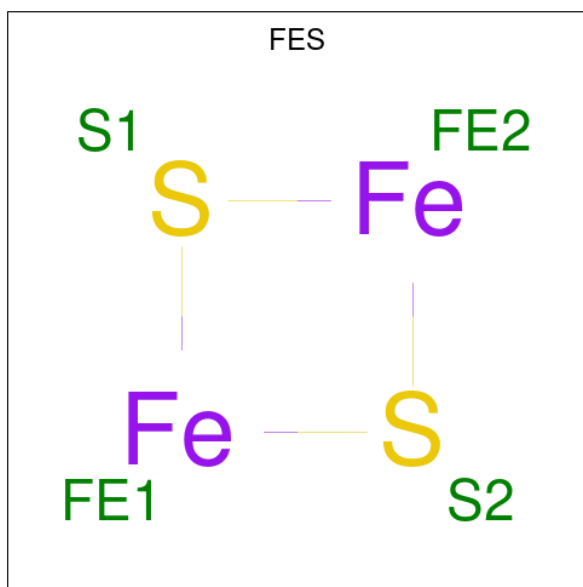
Chain	Residue	Modelled	Actual	Comment	Reference
B	66	GLY	ARG	engineered mutation	UNP O66841
B	427	ALA	-	expression tag	UNP O66841
B	428	GLY	-	expression tag	UNP O66841
B	429	HIS	-	expression tag	UNP O66841
B	430	HIS	-	expression tag	UNP O66841
B	431	HIS	-	expression tag	UNP O66841
B	432	HIS	-	expression tag	UNP O66841
B	433	HIS	-	expression tag	UNP O66841
B	434	HIS	-	expression tag	UNP O66841
D	66	GLY	ARG	engineered mutation	UNP O66841
D	427	ALA	-	expression tag	UNP O66841
D	428	GLY	-	expression tag	UNP O66841
D	429	HIS	-	expression tag	UNP O66841
D	430	HIS	-	expression tag	UNP O66841
D	431	HIS	-	expression tag	UNP O66841
D	432	HIS	-	expression tag	UNP O66841

Continued on next page...

Continued from previous page...

Chain	Residue	Modelled	Actual	Comment	Reference
D	433	HIS	-	expression tag	UNP O66841
D	434	HIS	-	expression tag	UNP O66841

- Molecule 3 is FE2/S2 (INORGANIC) CLUSTER (CCD ID: FES) (formula: Fe₂S₂) (labeled as "Ligand of Interest" by depositor).



Mol	Chain	Residues	Atoms			ZeroOcc	AltConf
3	A	1	Total	Fe	S	0	0
			4	2	2		
3	C	1	Total	Fe	S	0	0
			4	2	2		

- Molecule 4 is SULFATE ION (CCD ID: SO4) (formula: O₄S).



Mol	Chain	Residues	Atoms	ZeroOcc	AltConf
4	A	1	Total O S 5 4 1	0	0
4	A	1	Total O S 5 4 1	0	0
4	A	1	Total O S 5 4 1	0	0
4	B	1	Total O S 5 4 1	0	0
4	B	1	Total O S 5 4 1	0	0
4	C	1	Total O S 5 4 1	0	0
4	C	1	Total O S 5 4 1	0	0
4	D	1	Total O S 5 4 1	0	0

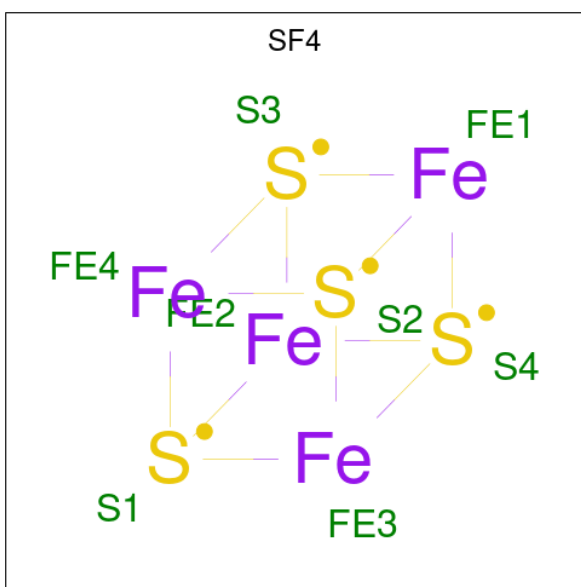
- Molecule 5 is CHLORIDE ION (CCD ID: CL) (formula: Cl).

Mol	Chain	Residues	Atoms	ZeroOcc	AltConf
5	A	1	Total Cl 1 1	0	0
5	B	1	Total Cl 1 1	0	0
5	C	1	Total Cl 1 1	0	0

- Molecule 6 is SODIUM ION (CCD ID: NA) (formula: Na).

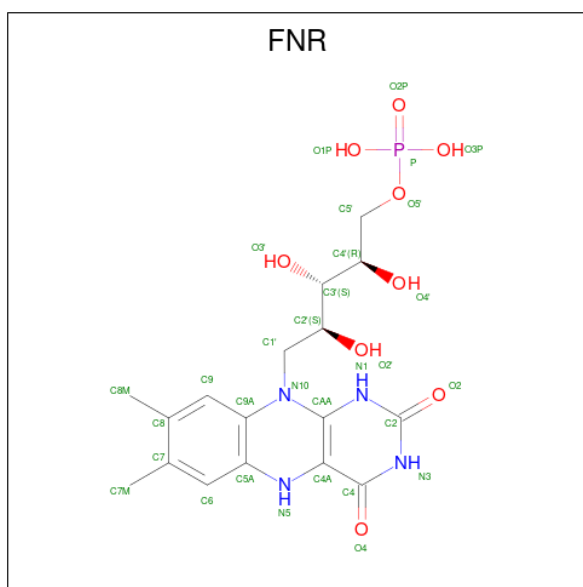
Mol	Chain	Residues	Atoms	ZeroOcc	AltConf
6	A	2	Total Na 2 2	0	0
6	B	8	Total Na 8 8	0	0
6	C	2	Total Na 2 2	0	0
6	D	4	Total Na 4 4	0	0

- Molecule 7 is IRON/SULFUR CLUSTER (CCD ID: SF4) (formula: Fe₄S₄) (labeled as "Ligand of Interest" by depositor).



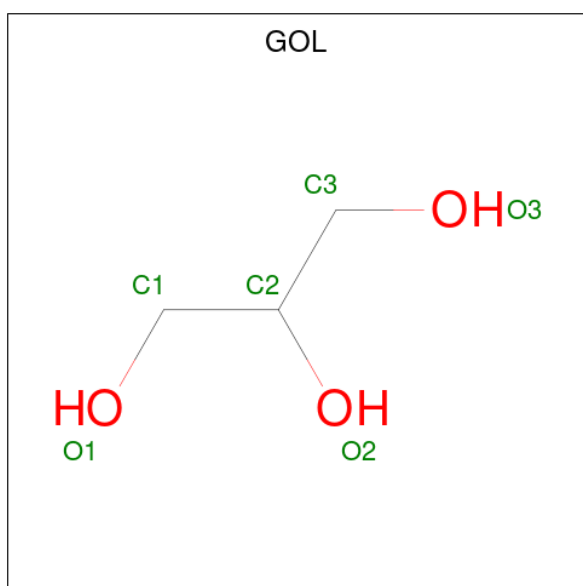
Mol	Chain	Residues	Atoms	ZeroOcc	AltConf
7	B	1	Total Fe S 8 4 4	0	0
7	D	1	Total Fe S 8 4 4	0	0

- Molecule 8 is 1-DEOXY-1-(7,8-DIMETHYL-2,4-DIOXO-3,4-DIHYDRO-2H-BENZO[G]PT ERIDIN-1-ID-10(5H)-YL)-5-O-PHOSPHONATO-D-RIBITOL (CCD ID: FNR) (formula: C₁₇H₂₃N₄O₉P) (labeled as "Ligand of Interest" by depositor).



Mol	Chain	Residues	Atoms				ZeroOcc	AltConf	
8	B	1	Total	C	N	O	P	0	0
			31	17	4	9	1		
8	D	1	Total	C	N	O	P	0	0
			31	17	4	9	1		

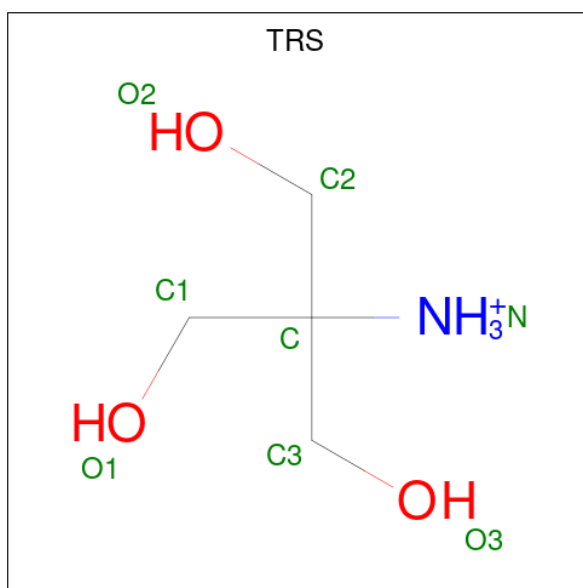
- Molecule 9 is GLYCEROL (CCD ID: GOL) (formula: C₃H₈O₃).



Mol	Chain	Residues	Atoms		ZeroOcc	AltConf	
9	B	1	Total	C	O	0	0
			6	3	3		

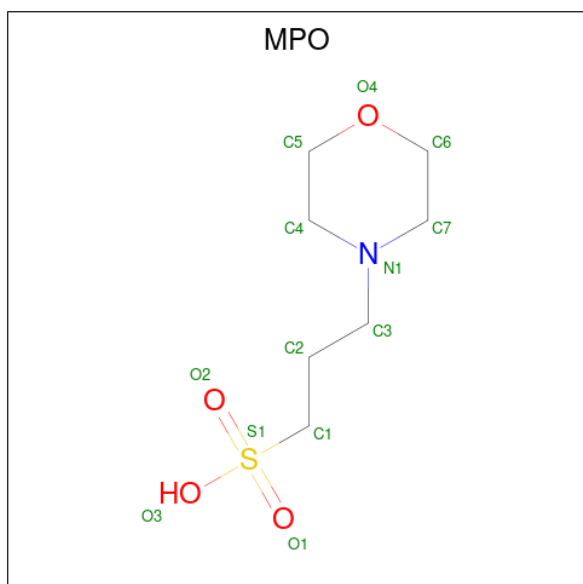
- Molecule 10 is 2-AMINO-2-HYDROXYMETHYL-PROPANE-1,3-DIOL (CCD ID: TRS)

(formula: C₄H₁₂NO₃).



Mol	Chain	Residues	Atoms				ZeroOcc	AltConf
			Total	C	N	O		
10	D	1	8	4	1	3	0	0

- Molecule 11 is 3[N-MORPHOLINO]PROPANE SULFONIC ACID (CCD ID: MPO) (formula: C₇H₁₅NO₄S).



Mol	Chain	Residues	Atoms					ZeroOcc	AltConf
			Total	C	N	O	S		
11	D	1	13	7	1	4	1	0	0

- Molecule 12 is water.

Mol	Chain	Residues	Atoms		ZeroOcc	AltConf
12	A	110	Total 111	O 111	0	1
12	B	306	Total 306	O 306	0	0
12	C	121	Total 121	O 121	0	0
12	D	312	Total 313	O 313	0	1

3 Residue-property plots [i](#)

These plots are drawn for all protein, RNA, DNA and oligosaccharide chains in the entry. The first graphic for a chain summarises the proportions of the various outlier classes displayed in the second graphic. The second graphic shows the sequence view annotated by issues in geometry and electron density. Residues are color-coded according to the number of geometric quality criteria for which they contain at least one outlier: green = 0, yellow = 1, orange = 2 and red = 3 or more. A red dot above a residue indicates a poor fit to the electron density ($RSRZ > 2$). Stretches of 2 or more consecutive residues without any outlier are shown as a green connector. Residues present in the sample, but not in the model, are shown in grey.

- Molecule 1: NADH-quinone oxidoreductase subunit E

Chain A:  92% 6%

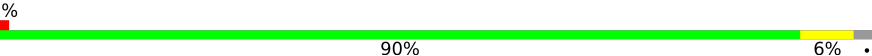


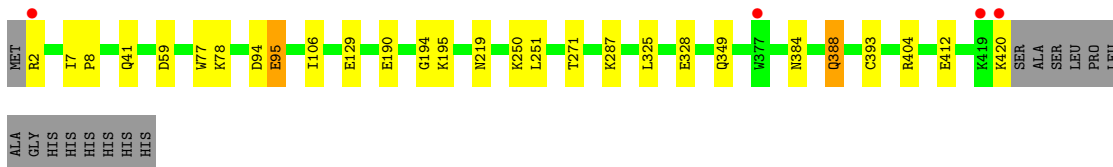
- Molecule 1: NADH-quinone oxidoreductase subunit E

Chain C:  95%



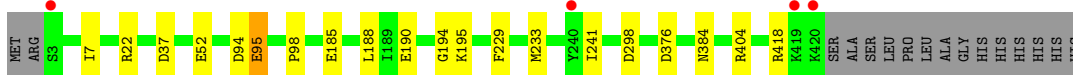
- Molecule 2: NADH-quinone oxidoreductase subunit F

Chain B:  90% 6%



- Molecule 2: NADH-quinone oxidoreductase subunit F

Chain D:  92%



4 Data and refinement statistics

Property	Value	Source
Space group	P 21 21 21	Depositor
Cell constants a, b, c, α , β , γ	63.30Å 116.22Å 189.54Å 90.00° 90.00° 90.00°	Depositor
Resolution (Å)	49.59 – 1.99 49.59 – 1.99	Depositor EDS
% Data completeness (in resolution range)	99.3 (49.59-1.99) 99.3 (49.59-1.99)	Depositor EDS
R_{merge}	(Not available)	Depositor
R_{sym}	(Not available)	Depositor
$\langle I/\sigma(I) \rangle$ ¹	2.19 (at 1.98Å)	Xtrriage
Refinement program	REFMAC 5.8.0425	Depositor
R, R_{free}	0.165 , 0.201 0.178 , 0.211	Depositor DCC
R_{free} test set	4847 reflections (4.98%)	wwPDB-VP
Wilson B-factor (Å ²)	24.1	Xtrriage
Anisotropy	0.144	Xtrriage
Bulk solvent k_{sol} (e/Å ³), B_{sol} (Å ²)	0.36 , 38.7	EDS
L-test for twinning ²	$\langle L \rangle = 0.49$, $\langle L^2 \rangle = 0.32$	Xtrriage
Estimated twinning fraction	No twinning to report.	Xtrriage
F_o, F_c correlation	0.96	EDS
Total number of atoms	10153	wwPDB-VP
Average B, all atoms (Å ²)	31.0	wwPDB-VP

Xtrriage's analysis on translational NCS is as follows: *The analyses of the Patterson function reveals a significant off-origin peak that is 40.99 % of the origin peak, indicating pseudo-translational symmetry. The chance of finding a peak of this or larger height randomly in a structure without pseudo-translational symmetry is equal to 2.5206e-04. The detected translational NCS is most likely also responsible for the elevated intensity ratio.*

¹Intensities estimated from amplitudes.

²Theoretical values of $\langle |L| \rangle$, $\langle L^2 \rangle$ for acentric reflections are 0.5, 0.333 respectively for untwinned datasets, and 0.375, 0.2 for perfectly twinned datasets.

5 Model quality [i](#)

5.1 Standard geometry [i](#)

Bond lengths and bond angles in the following residue types are not validated in this section: MPO, TRS, GOL, CL, FNR, FES, NA, SO4, SF4

The Z score for a bond length (or angle) is the number of standard deviations the observed value is removed from the expected value. A bond length (or angle) with $|Z| > 5$ is considered an outlier worth inspection. RMSZ is the root-mean-square of all Z scores of the bond lengths (or angles).

Mol	Chain	Bond lengths		Bond angles	
		RMSZ	# Z >5	RMSZ	# Z >5
1	A	0.50	0/1297	0.92	2/1752 (0.1%)
1	C	0.52	0/1297	0.92	0/1752
2	B	0.52	0/3381	0.93	3/4576 (0.1%)
2	D	0.53	0/3375	0.93	2/4568 (0.0%)
All	All	0.52	0/9350	0.93	7/12648 (0.1%)

Chiral center outliers are detected by calculating the chiral volume of a chiral center and verifying if the center is modelled as a planar moiety or with the opposite hand. A planarity outlier is detected by checking planarity of atoms in a peptide group, atoms in a mainchain group or atoms of a sidechain that are expected to be planar.

Mol	Chain	#Chirality outliers	#Planarity outliers
2	D	0	2

There are no bond length outliers.

The worst 5 of 7 bond angle outliers are listed below:

Mol	Chain	Res	Type	Atoms	Z	Observed(°)	Ideal(°)
2	B	271	THR	CA-CB-OG1	-5.45	101.43	109.60
1	A	74	ASP	CA-CB-CG	5.39	117.99	112.60
1	A	14	THR	CA-CB-OG1	-5.33	101.61	109.60
2	B	129	GLU	CB-CA-C	5.27	118.88	109.65
2	D	298	ASP	CA-CB-CG	5.23	117.83	112.60

There are no chirality outliers.

All (2) planarity outliers are listed below:

Mol	Chain	Res	Type	Group
2	D	22	ARG	Sidechain

Continued on next page...

Continued from previous page...

Mol	Chain	Res	Type	Group
2	D	418	ARG	Sidechain

5.2 Too-close contacts

In the following table, the Non-H and H(model) columns list the number of non-hydrogen atoms and hydrogen atoms in the chain respectively. The H(added) column lists the number of hydrogen atoms added and optimized by MolProbity. The Clashes column lists the number of clashes within the asymmetric unit, whereas Symm-Clashes lists symmetry-related clashes.

Mol	Chain	Non-H	H(model)	H(added)	Clashes	Symm-Clashes
1	A	1268	0	1269	6	0
1	C	1268	0	1269	3	0
2	B	3300	0	3258	17	0
2	D	3294	0	3262	11	0
3	A	4	0	0	0	0
3	C	4	0	0	0	0
4	A	15	0	0	0	0
4	B	10	0	0	0	0
4	C	10	0	0	0	0
4	D	5	0	0	0	0
5	A	1	0	0	0	0
5	B	1	0	0	0	0
5	C	1	0	0	0	0
6	A	2	0	0	0	0
6	B	8	0	0	0	0
6	C	2	0	0	0	0
6	D	4	0	0	0	0
7	B	8	0	0	0	0
7	D	8	0	0	0	0
8	B	31	0	22	0	0
8	D	31	0	22	0	0
9	B	6	0	8	0	0
10	D	8	0	12	1	0
11	D	13	0	15	2	0
12	A	111	0	0	2	0
12	B	306	0	0	5	0
12	C	121	0	0	0	0
12	D	313	0	0	1	0
All	All	10153	0	9137	33	0

The all-atom clashscore is defined as the number of clashes found per 1000 atoms (including hydrogen atoms). The all-atom clashscore for this structure is 2.

The worst 5 of 33 close contacts within the same asymmetric unit are listed below, sorted by their clash magnitude.

Atom-1	Atom-2	Interatomic distance (Å)	Clash overlap (Å)
2:B:250:LYS:HE2	12:B:640:HOH:O	1.73	0.88
2:B:388:GLN:HG3	12:B:831:HOH:O	1.89	0.73
2:D:185:GLU:OE2	11:D:504:MPO:O3	2.08	0.71
2:B:190:GLU:OE1	2:B:195:LYS:HE2	2.00	0.61
1:A:62:HIS:HD2	12:A:402:HOH:O	1.84	0.59

There are no symmetry-related clashes.

5.3 Torsion angles [i](#)

5.3.1 Protein backbone [i](#)

In the following table, the Percentiles column shows the percent Ramachandran outliers of the chain as a percentile score with respect to all X-ray entries followed by that with respect to entries of similar resolution.

The Analysed column shows the number of residues for which the backbone conformation was analysed, and the total number of residues.

Mol	Chain	Analysed	Favoured	Allowed	Outliers	Percentiles	
1	A	154/160 (96%)	149 (97%)	5 (3%)	0	100	100
1	C	154/160 (96%)	148 (96%)	6 (4%)	0	100	100
2	B	419/434 (96%)	413 (99%)	5 (1%)	1 (0%)	43	35
2	D	418/434 (96%)	408 (98%)	9 (2%)	1 (0%)	43	35
All	All	1145/1188 (96%)	1118 (98%)	25 (2%)	2 (0%)	43	35

All (2) Ramachandran outliers are listed below:

Mol	Chain	Res	Type
2	B	95	GLU
2	D	95	GLU

5.3.2 Protein sidechains [i](#)

In the following table, the Percentiles column shows the percent sidechain outliers of the chain as a percentile score with respect to all X-ray entries followed by that with respect to entries of similar resolution.

The Analysed column shows the number of residues for which the sidechain conformation was analysed, and the total number of residues.

Mol	Chain	Analysed	Rotameric	Outliers	Percentiles	
1	A	142/146 (97%)	141 (99%)	1 (1%)	76	73
1	C	142/146 (97%)	142 (100%)	0	100	100
2	B	342/356 (96%)	338 (99%)	4 (1%)	63	58
2	D	343/356 (96%)	341 (99%)	2 (1%)	78	76
All	All	969/1004 (96%)	962 (99%)	7 (1%)	76	73

5 of 7 residues with a non-rotameric sidechain are listed below:

Mol	Chain	Res	Type
2	B	412	GLU
2	B	420	LYS
2	D	52	GLU
2	D	7	ILE
2	B	393	CYS

Sometimes sidechains can be flipped to improve hydrogen bonding and reduce clashes. 5 of 16 such sidechains are listed below:

Mol	Chain	Res	Type
2	D	384	ASN
2	D	349	GLN
1	C	153	ASN
2	D	286	ASN
1	C	62	HIS

5.3.3 RNA [i](#)

There are no RNA molecules in this entry.

5.4 Non-standard residues in protein, DNA, RNA chains [i](#)

There are no non-standard protein/DNA/RNA residues in this entry.

5.5 Carbohydrates [i](#)

There are no oligosaccharides in this entry.

5.6 Ligand geometry [i](#)

Of 36 ligands modelled in this entry, 19 are monoatomic - leaving 17 for Mogul analysis.

In the following table, the Counts columns list the number of bonds (or angles) for which Mogul statistics could be retrieved, the number of bonds (or angles) that are observed in the model and the number of bonds (or angles) that are defined in the Chemical Component Dictionary. The Link column lists molecule types, if any, to which the group is linked. The Z score for a bond length (or angle) is the number of standard deviations the observed value is removed from the expected value. A bond length (or angle) with $|Z| > 2$ is considered an outlier worth inspection. RMSZ is the root-mean-square of all Z scores of the bond lengths (or angles).

Mol	Type	Chain	Res	Link	Bond lengths			Bond angles		
					Counts	RMSZ	# Z > 2	Counts	RMSZ	# Z > 2
7	SF4	B	501	2	0,12,12	-	-	-		
4	SO4	C	202	-	4,4,4	0.30	0	6,6,6	0.17	0
3	FES	C	201	1	0,4,4	-	-	-		
11	MPO	D	504	6	13,13,13	0.55	0	17,17,17	1.52	3 (17%)
4	SO4	C	203	-	4,4,4	0.32	0	6,6,6	0.07	0
4	SO4	A	202	-	4,4,4	0.32	0	6,6,6	0.10	0
4	SO4	B	504	-	4,4,4	0.29	0	6,6,6	0.18	0
4	SO4	B	505	-	4,4,4	0.32	0	6,6,6	0.12	0
8	FNR	B	502	-	32,33,33	0.35	0	41,50,50	0.73	2 (4%)
4	SO4	A	204	-	4,4,4	0.30	0	6,6,6	0.09	0
9	GOL	B	503	-	5,5,5	0.11	0	5,5,5	0.14	0
3	FES	A	201	1	0,4,4	-	-	-		
4	SO4	A	203	-	4,4,4	0.29	0	6,6,6	0.10	0
10	TRS	D	503	-	7,7,7	0.19	0	9,9,9	0.22	0
8	FNR	D	502	-	32,33,33	0.42	0	41,50,50	0.56	0
4	SO4	D	505	-	4,4,4	0.20	0	6,6,6	0.26	0
7	SF4	D	501	2	0,12,12	-	-	-		

In the following table, the Chirals column lists the number of chiral outliers, the number of chiral centers analysed, the number of these observed in the model and the number defined in the Chemical Component Dictionary. Similar counts are reported in the Torsion and Rings columns. '-' means no outliers of that kind were identified.

Mol	Type	Chain	Res	Link	Chirals	Torsions	Rings
7	SF4	B	501	2	-	-	0/6/5/5
3	FES	C	201	1	-	-	0/1/1/1
11	MPO	D	504	6	-	1/7/15/15	0/1/1/1
8	FNR	B	502	-	-	3/18/18/18	0/3/3/3
9	GOL	B	503	-	-	0/4/4/4	-
3	FES	A	201	1	-	-	0/1/1/1
10	TRS	D	503	-	-	3/9/9/9	-

Continued on next page...

Continued from previous page...

Mol	Type	Chain	Res	Link	Chirals	Torsions	Rings
8	FNR	D	502	-	-	2/18/18/18	0/3/3/3
7	SF4	D	501	2	-	-	0/6/5/5

There are no bond length outliers.

All (5) bond angle outliers are listed below:

Mol	Chain	Res	Type	Atoms	Z	Observed($^{\circ}$)	Ideal($^{\circ}$)
11	D	504	MPO	O3-S1-O1	-3.84	101.78	111.40
11	D	504	MPO	O2-S1-O1	2.84	123.07	113.82
8	B	502	FNR	O3P-P-O5'	-2.82	99.31	106.67
11	D	504	MPO	O3-S1-C1	-2.52	101.08	106.00
8	B	502	FNR	O1P-P-O5'	2.02	111.94	106.67

There are no chirality outliers.

5 of 9 torsion outliers are listed below:

Mol	Chain	Res	Type	Atoms
10	D	503	TRS	C3-C-C2-O2
10	D	503	TRS	N-C-C2-O2
10	D	503	TRS	C1-C-C2-O2
8	B	502	FNR	C4'-C5'-O5'-P
8	D	502	FNR	C4'-C5'-O5'-P

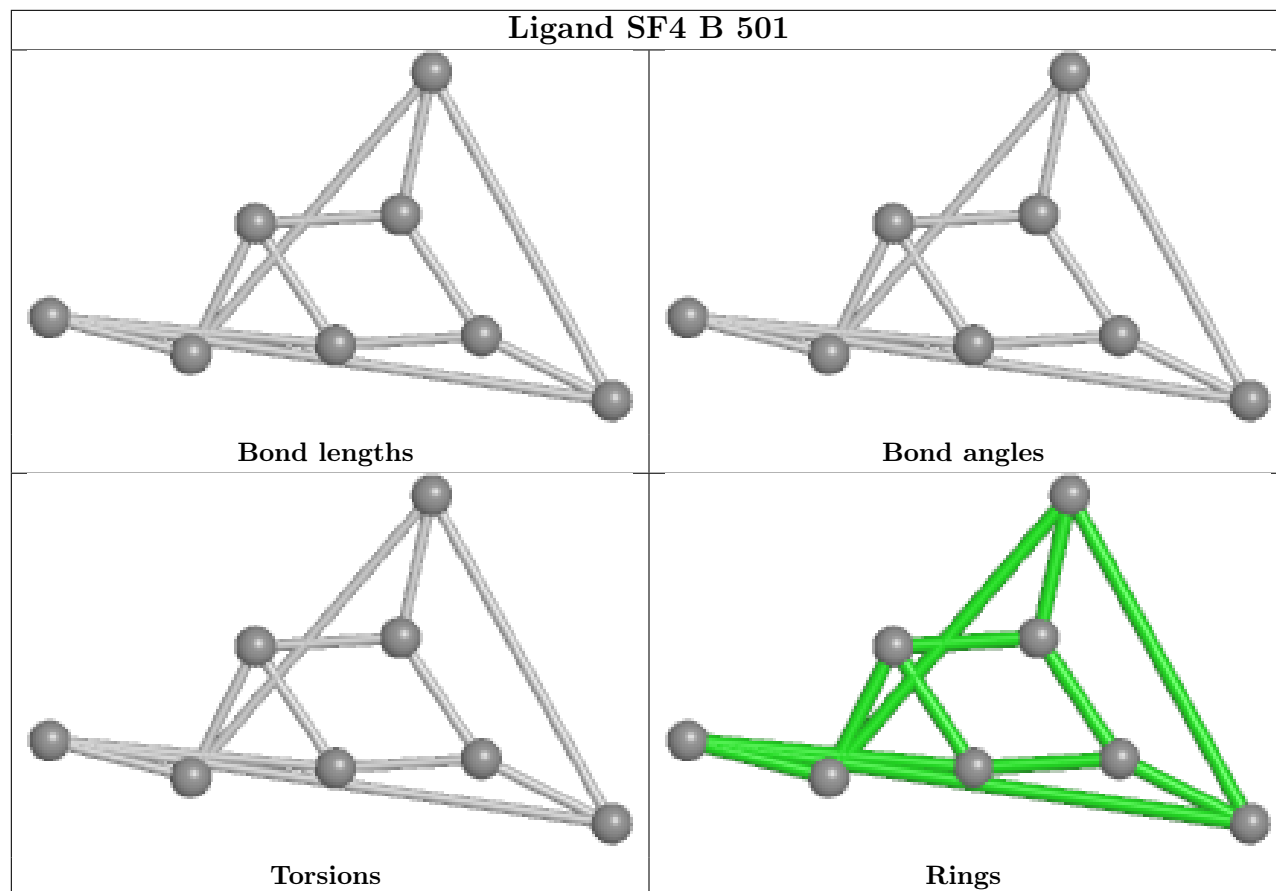
There are no ring outliers.

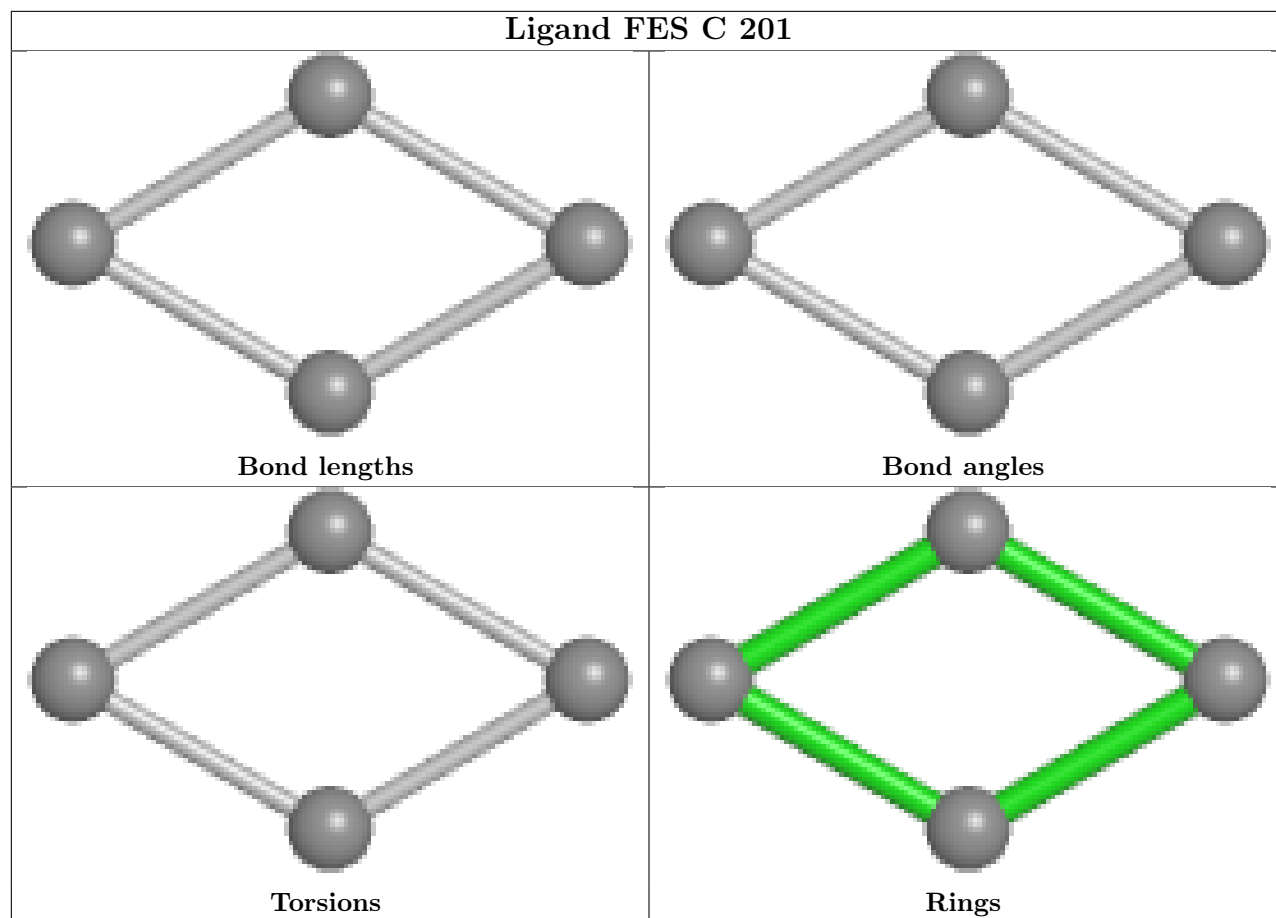
2 monomers are involved in 3 short contacts:

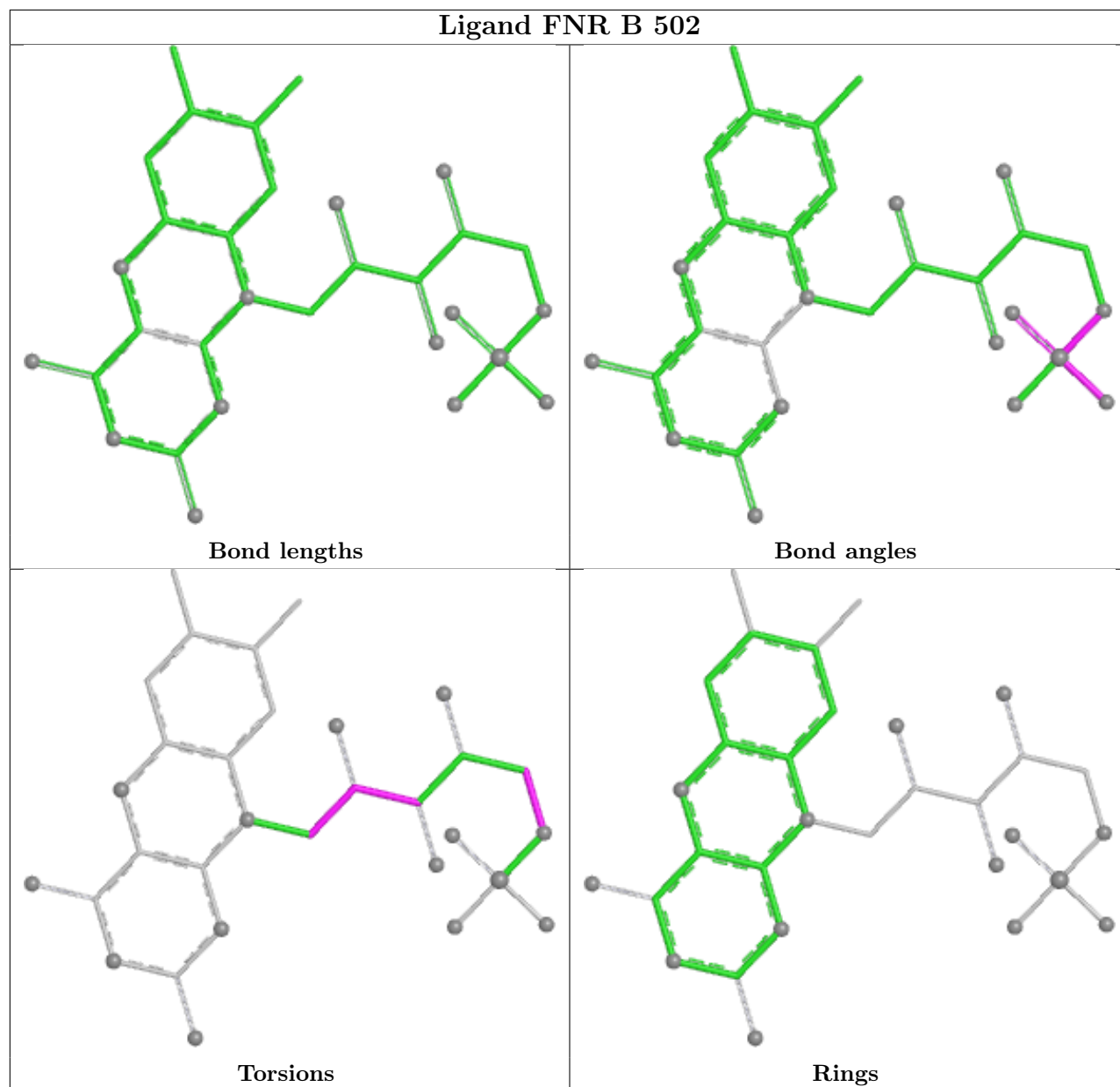
Mol	Chain	Res	Type	Clashes	Symm-Clashes
11	D	504	MPO	2	0
10	D	503	TRS	1	0

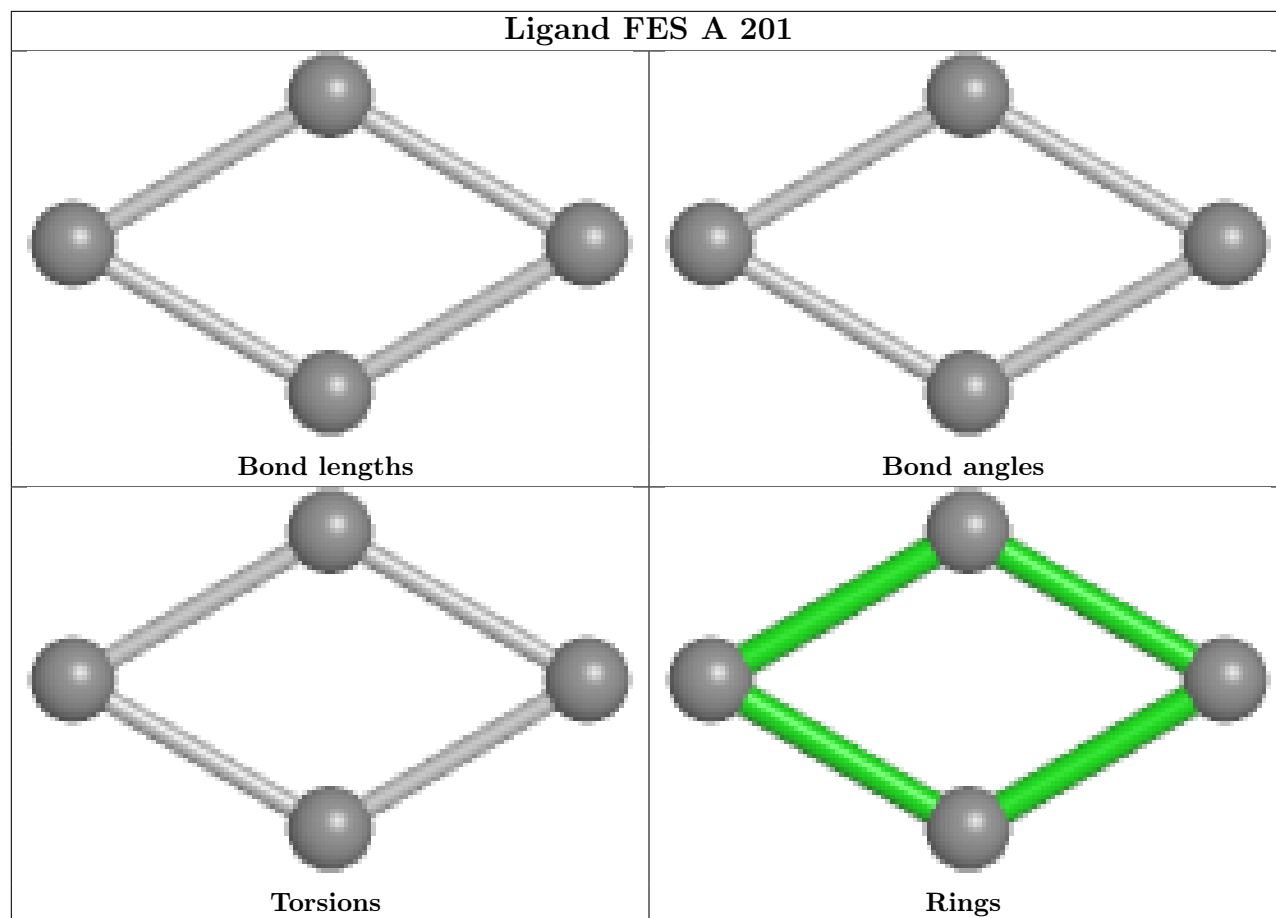
The following is a two-dimensional graphical depiction of Mogul quality analysis of bond lengths, bond angles, torsion angles, and ring geometry for all instances of the Ligand of Interest. In addition, ligands with molecular weight > 250 and outliers as shown on the validation Tables will also be included. For torsion angles, if less than 5% of the Mogul distribution of torsion angles is within 10 degrees of the torsion angle in question, then that torsion angle is considered an outlier. Any bond that is central to one or more torsion angles identified as an outlier by Mogul will be highlighted in the graph. For rings, the root-mean-square deviation (RMSD) between the ring in question and similar rings identified by Mogul is calculated over all ring torsion angles. If the average RMSD is greater than 60 degrees and the minimal RMSD between the ring in question and any Mogul-identified rings is also greater than 60 degrees, then that ring is considered an outlier. The outliers are highlighted in purple. The color gray indicates Mogul did not find sufficient

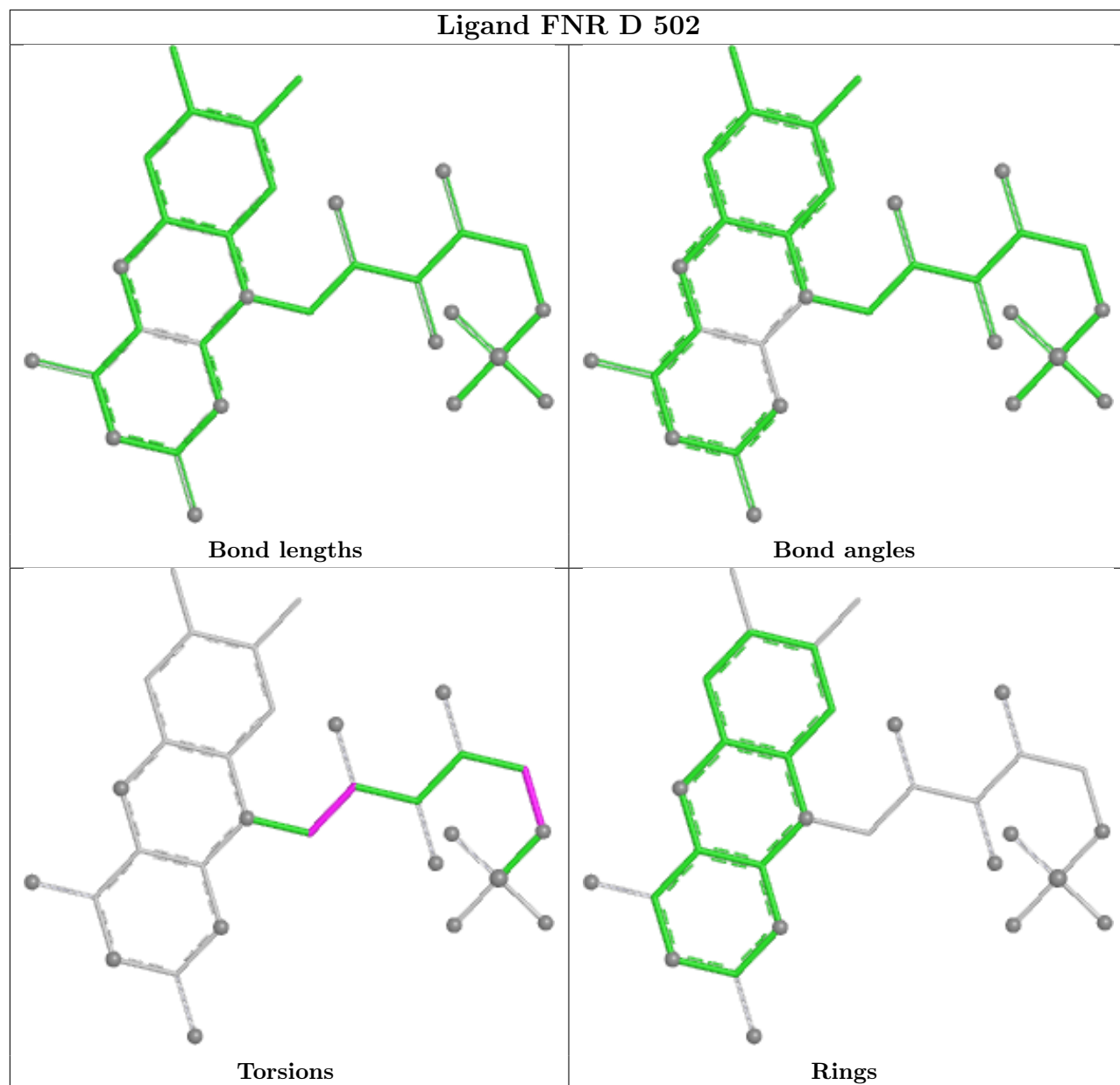
equivalents in the CSD to analyse the geometry.

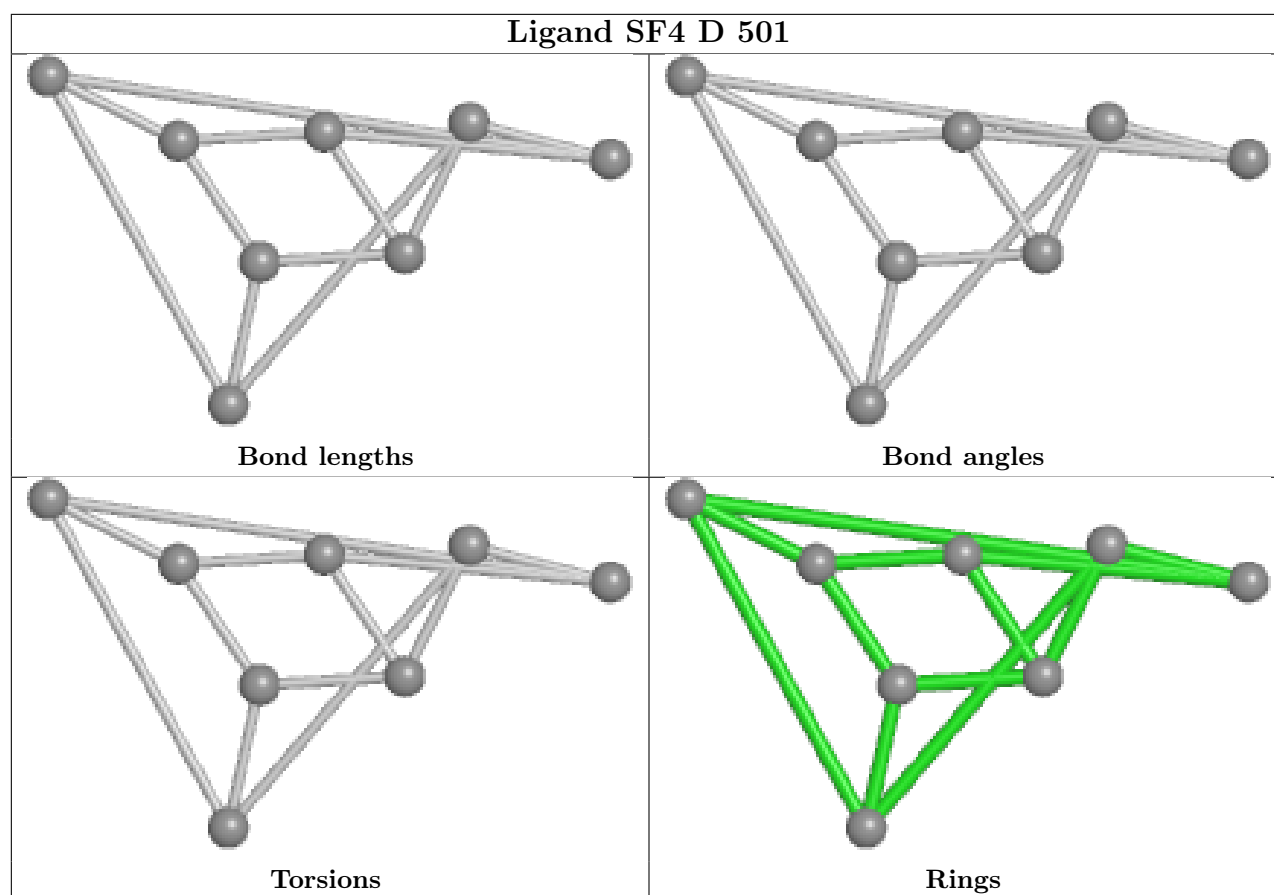












5.7 Other polymers [i](#)

There are no such residues in this entry.

5.8 Polymer linkage issues [i](#)

There are no chain breaks in this entry.

6 Fit of model and data [i](#)

6.1 Protein, DNA and RNA chains [i](#)

In the following table, the column labelled ‘#RSRZ> 2’ contains the number (and percentage) of RSRZ outliers, followed by percent RSRZ outliers for the chain as percentile scores relative to all X-ray entries and entries of similar resolution. The OWAB column contains the minimum, median, 95th percentile and maximum values of the occupancy-weighted average B-factor per residue. The column labelled ‘Q< 0.9’ lists the number of (and percentage) of residues with an average occupancy less than 0.9.

Mol	Chain	Analysed	<RSRZ>	#RSRZ>2	OWAB(Å ²)	Q<0.9
1	A	156/160 (97%)	0.01	0 100 100	20, 34, 53, 95	0
1	C	156/160 (97%)	0.02	1 (0%) 85 90	20, 33, 52, 83	0
2	B	419/434 (96%)	-0.17	4 (0%) 79 86	11, 27, 41, 81	2 (0%)
2	D	418/434 (96%)	-0.27	4 (0%) 79 86	11, 26, 41, 97	2 (0%)
All	All	1149/1188 (96%)	-0.16	9 (0%) 82 87	11, 28, 47, 97	4 (0%)

The worst 5 of 9 RSRZ outliers are listed below:

Mol	Chain	Res	Type	RSRZ
2	B	377	TRP	3.1
2	B	419	LYS	2.9
1	C	5	GLU	2.7
2	B	420	LYS	2.7
2	D	3	SER	2.5

6.2 Non-standard residues in protein, DNA, RNA chains [i](#)

There are no non-standard protein/DNA/RNA residues in this entry.

6.3 Carbohydrates [i](#)

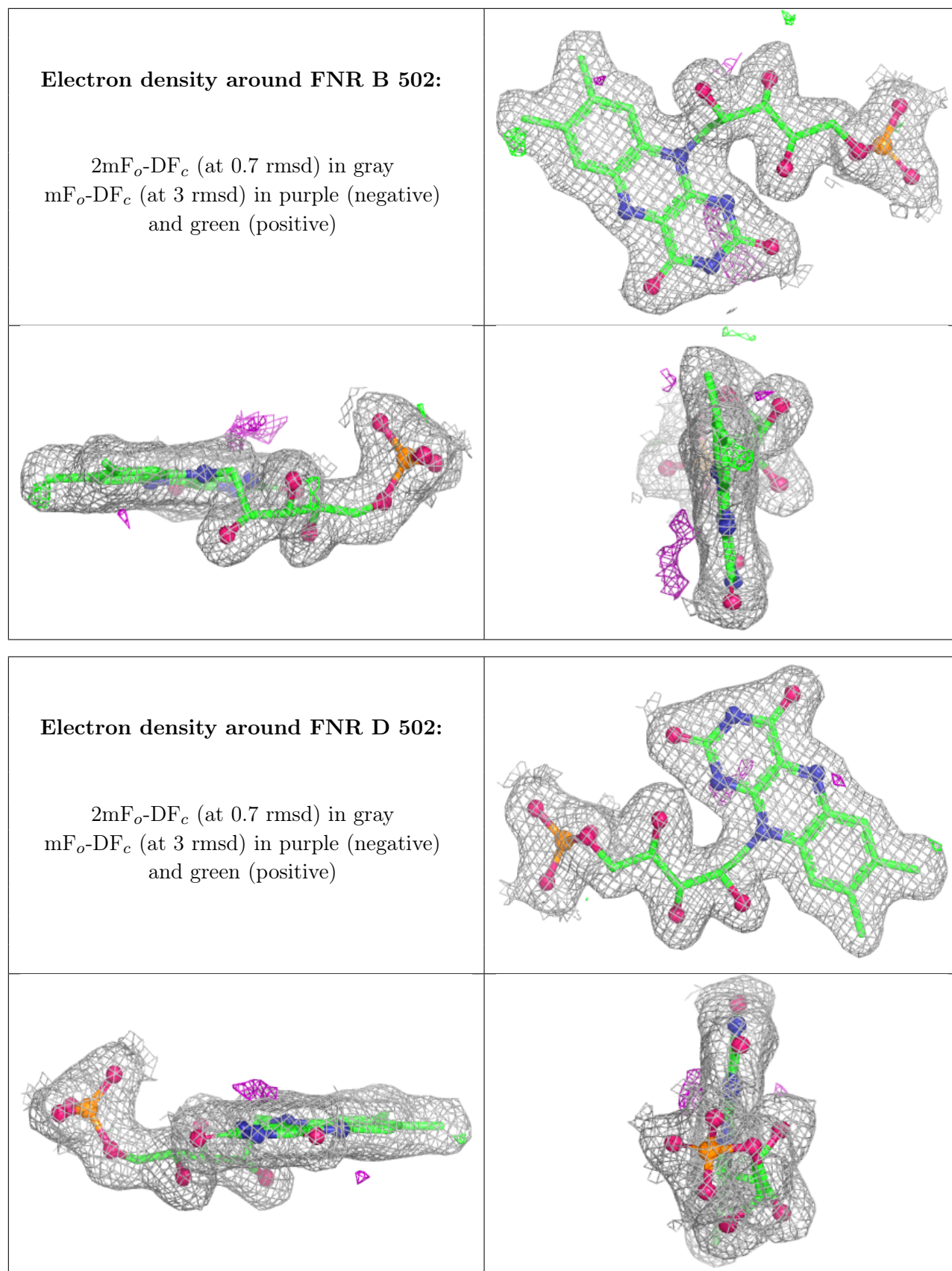
There are no oligosaccharides in this entry.

6.4 Ligands [i](#)

In the following table, the Atoms column lists the number of modelled atoms in the group and the number defined in the chemical component dictionary. The B-factors column lists the minimum, median, 95th percentile and maximum values of B factors of atoms in the group. The column labelled ‘Q< 0.9’ lists the number of atoms with occupancy less than 0.9.

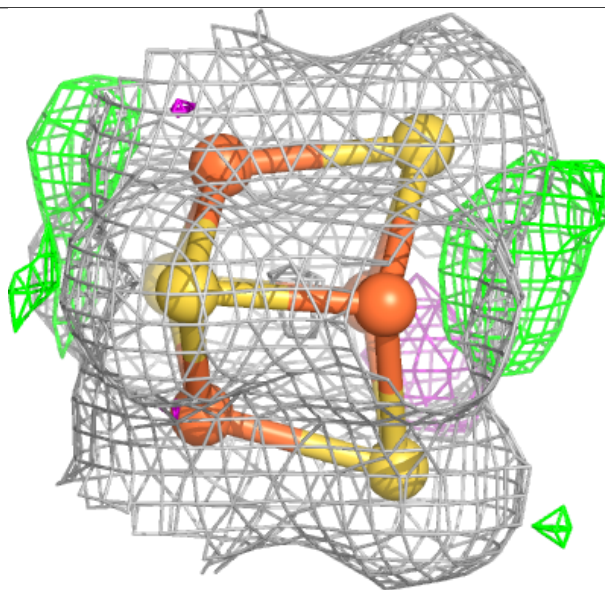
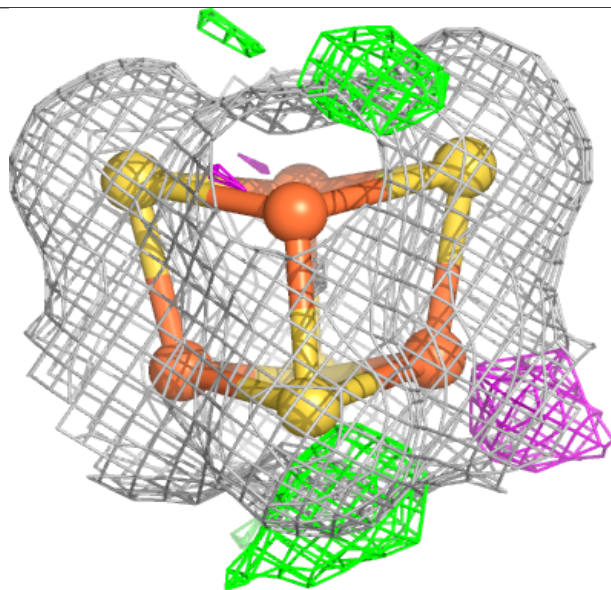
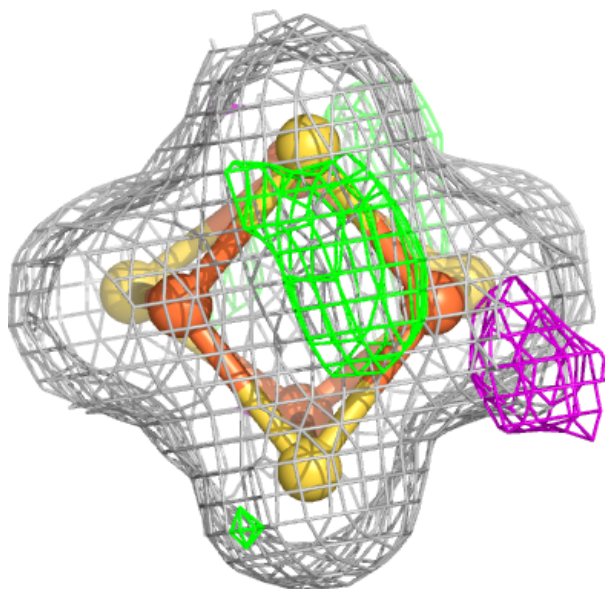
Mol	Type	Chain	Res	Atoms	RSCC	RSR	B-factors(\AA^2)	Q<0.9
6	NA	B	511	1/1	0.72	0.14	62,62,62,62	0
4	SO4	B	505	5/5	0.74	0.12	86,92,93,97	0
4	SO4	A	202	5/5	0.78	0.11	73,75,81,84	0
4	SO4	B	504	5/5	0.82	0.13	44,57,63,63	0
6	NA	C	205	1/1	0.84	0.16	43,43,43,43	0
4	SO4	C	202	5/5	0.85	0.10	63,64,66,68	0
6	NA	D	507	1/1	0.85	0.13	58,58,58,58	0
11	MPO	D	504	13/13	0.85	0.20	53,59,70,70	0
6	NA	B	510	1/1	0.86	0.26	63,63,63,63	0
6	NA	B	513	1/1	0.89	0.40	72,72,72,72	0
9	GOL	B	503	6/6	0.89	0.13	41,44,45,48	0
10	TRS	D	503	8/8	0.89	0.14	42,45,51,56	0
6	NA	B	508	1/1	0.89	0.23	44,44,44,44	0
4	SO4	A	203	5/5	0.90	0.10	52,56,62,71	0
6	NA	C	206	1/1	0.91	0.18	48,48,48,48	0
5	CL	B	506	1/1	0.91	0.16	58,58,58,58	0
6	NA	D	508	1/1	0.91	0.13	47,47,47,47	0
6	NA	D	509	1/1	0.91	0.20	55,55,55,55	0
4	SO4	D	505	5/5	0.91	0.13	37,45,46,52	0
6	NA	B	514	1/1	0.91	0.18	53,53,53,53	0
5	CL	A	205	1/1	0.91	0.11	65,65,65,65	0
4	SO4	A	204	5/5	0.92	0.07	56,58,64,64	0
4	SO4	C	203	5/5	0.92	0.10	67,68,71,76	0
5	CL	C	204	1/1	0.94	0.08	58,58,58,58	0
6	NA	B	509	1/1	0.94	0.12	47,47,47,47	0
6	NA	B	512	1/1	0.95	0.08	53,53,53,53	0
6	NA	A	207	1/1	0.96	0.11	38,38,38,38	0
8	FNR	B	502	31/31	0.98	0.05	17,20,22,24	0
8	FNR	D	502	31/31	0.98	0.05	16,20,23,25	0
6	NA	B	507	1/1	0.98	0.04	34,34,34,34	0
6	NA	A	206	1/1	0.98	0.14	32,32,32,32	0
6	NA	D	506	1/1	0.98	0.06	31,31,31,31	0
7	SF4	D	501	8/8	0.99	0.02	18,18,19,20	0
3	FES	A	201	4/4	0.99	0.03	16,17,19,19	0
7	SF4	B	501	8/8	0.99	0.03	17,19,19,19	0
3	FES	C	201	4/4	1.00	0.01	17,18,18,18	0

The following is a graphical depiction of the model fit to experimental electron density of all instances of the Ligand of Interest. In addition, ligands with molecular weight > 250 and outliers as shown on the geometry validation Tables will also be included. Each fit is shown from different orientation to approximate a three-dimensional view.



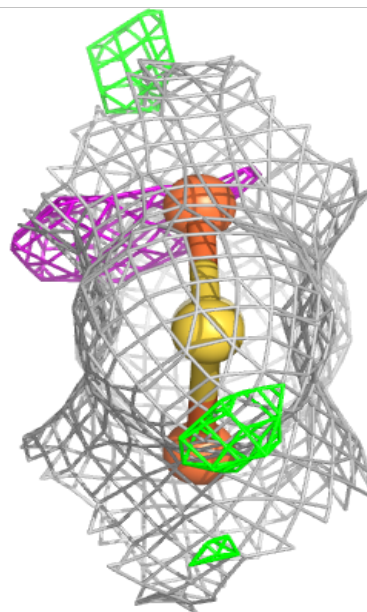
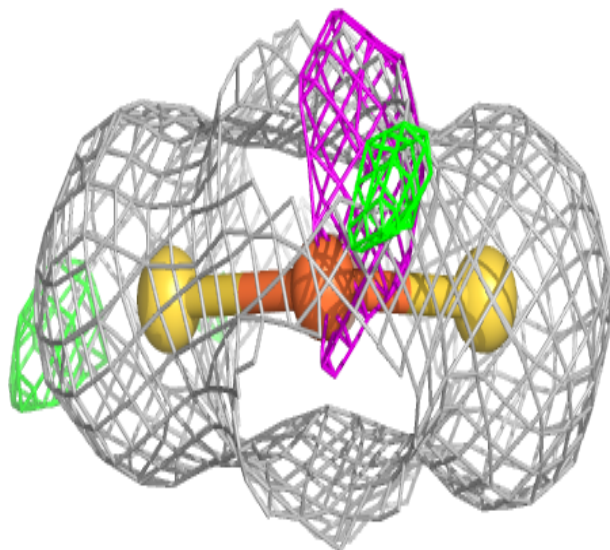
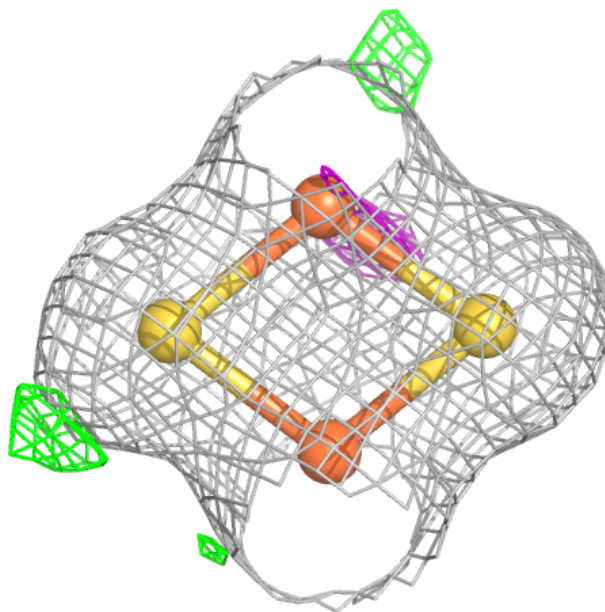
Electron density around SF4 D 501:

$2mF_o-DF_c$ (at 0.7 rmsd) in gray
 mF_o-DF_c (at 3 rmsd) in purple (negative)
and green (positive)



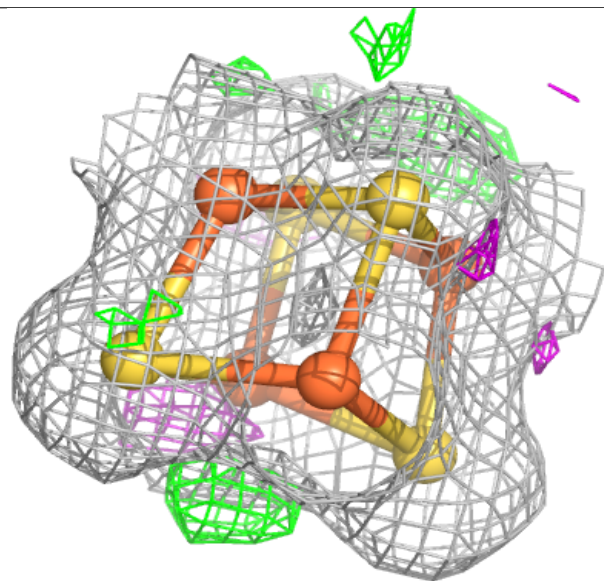
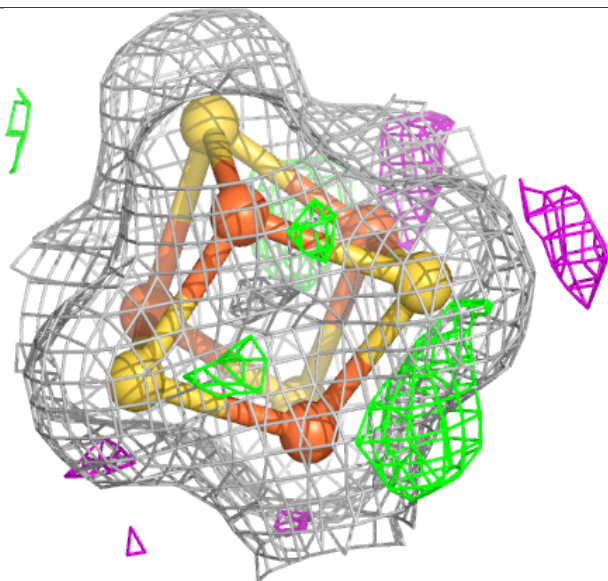
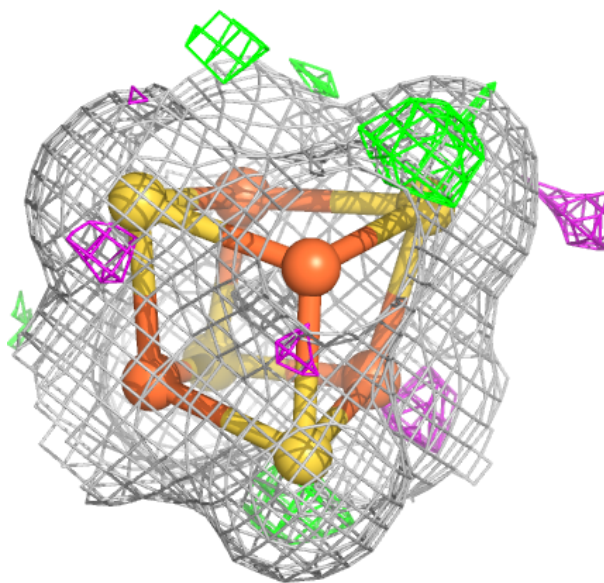
Electron density around FES A 201:

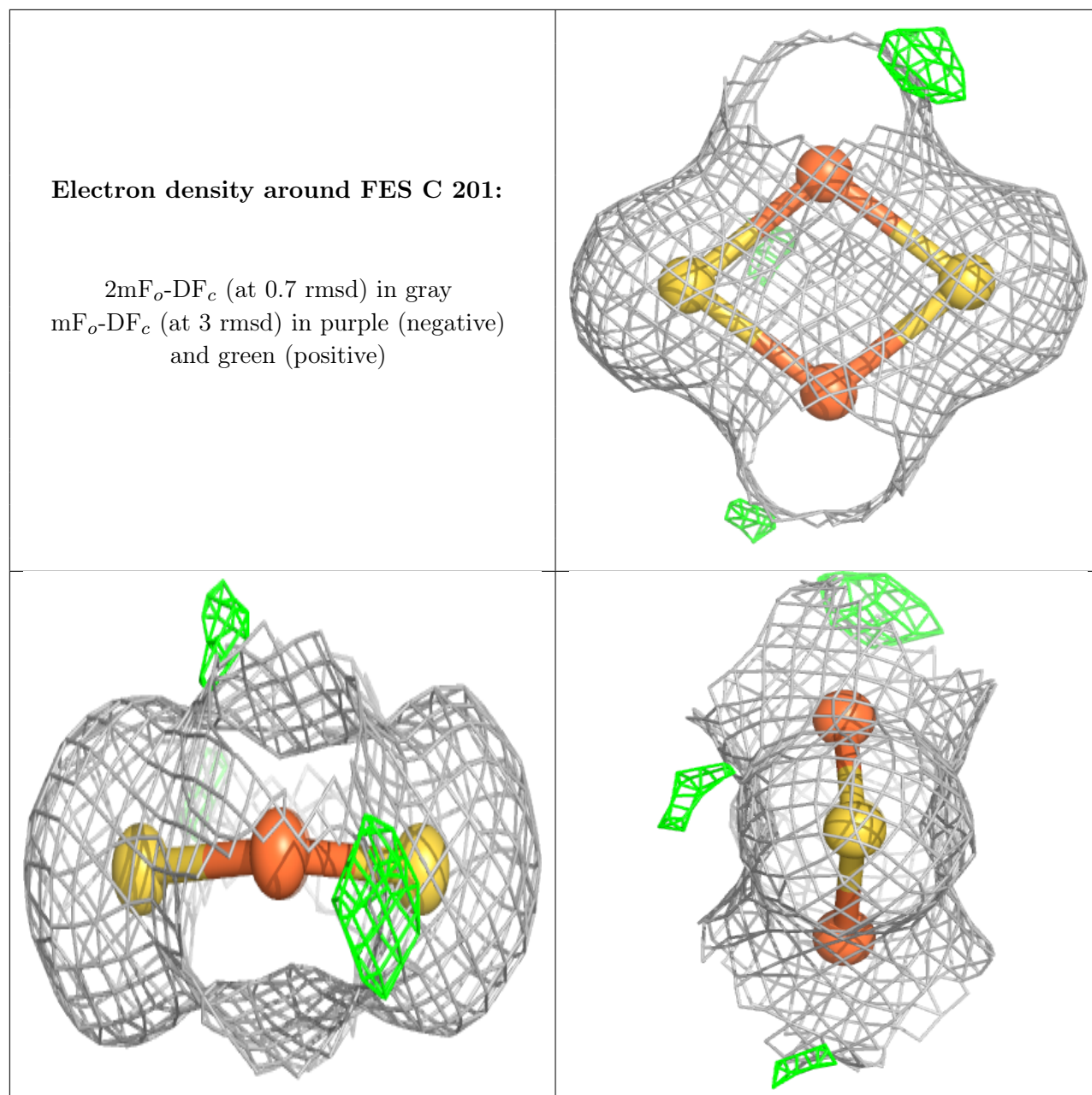
$2mF_o-DF_c$ (at 0.7 rmsd) in gray
 mF_o-DF_c (at 3 rmsd) in purple (negative)
and green (positive)



Electron density around SF4 B 501:

$2mF_o-DF_c$ (at 0.7 rmsd) in gray
 mF_o-DF_c (at 3 rmsd) in purple (negative)
and green (positive)





6.5 Other polymers [i](#)

There are no such residues in this entry.