



Full wwPDB X-ray Structure Validation Report ⓘ

Mar 1, 2026 – 05:45 AM UTC

PDB ID : 5FEC / pdb_00005fec
Title : Crystal structure of 3BNC60 Fab germline precursor in complex with 426c.TM4deltaV1-3 gp120
Authors : Scharf, L.; Bjorkman, P.J.
Deposited on : 2015-12-16
Resolution : 3.17 Å(reported)

This is a Full wwPDB X-ray Structure Validation Report for a publicly released PDB entry.

We welcome your comments at validation@mail.wwpdb.org

A user guide is available at

<https://www.wwpdb.org/validation/2017/XrayValidationReportHelp>

with specific help available everywhere you see the ⓘ symbol.

The types of validation reports are described at

<http://www.wwpdb.org/validation/2017/FAQs#types>.

The following versions of software and data (see [references ⓘ](#)) were used in the production of this report:

MolProbity : 4-5-2 with Phenix2.0
Mogul : 2022.3.0, CSD as543be (2022)
Xtriage (Phenix) : 2.0
EDS : 3.0
Percentile statistics : 20250101.v01 (using entries in the PDB archive January 1st 2025)
CCP4 : 9.0.010 (Gargrove)
Density-Fitness : 1.0.12
Ideal geometry (proteins) : Engh & Huber (2001)
Ideal geometry (DNA, RNA) : Parkinson et al. (1996)
Validation Pipeline (wwPDB-VP) : 2.49

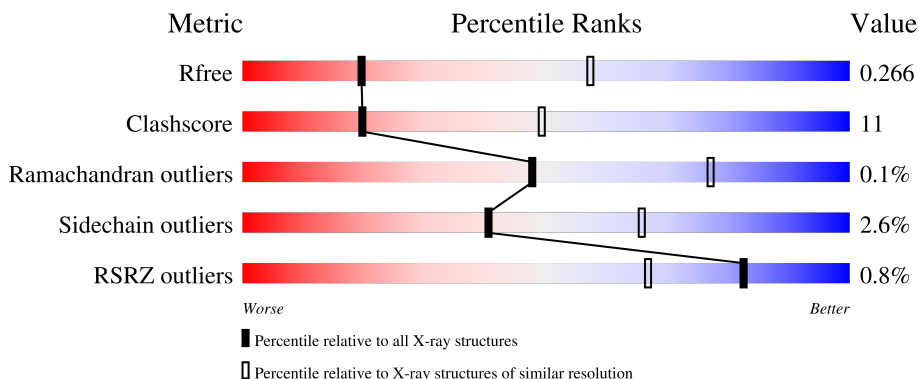
1 Overall quality at a glance

The following experimental techniques were used to determine the structure:

X-RAY DIFFRACTION

The reported resolution of this entry is 3.17 Å.

Percentile scores (ranging between 0-100) for global validation metrics of the entry are shown in the following graphic. The table shows the number of entries on which the scores are based.



Metric	Whole archive (#Entries)	Similar resolution (#Entries, resolution range(Å))
R_{free}	180053	2001 (3.20-3.16)
Clashscore	190562	2119 (3.20-3.16)
Ramachandran outliers	187476	2070 (3.20-3.16)
Sidechain outliers	187428	2069 (3.20-3.16)
RSRZ outliers	180081	2001 (3.20-3.16)

The table below summarises the geometric issues observed across the polymeric chains and their fit to the electron density. The red, orange, yellow and green segments of the lower bar indicate the fraction of residues that contain outliers for ≥ 3 , 2, 1 and 0 types of geometric quality criteria respectively. A grey segment represents the fraction of residues that are not modelled. The numeric value for each fraction is indicated below the corresponding segment, with a dot representing fractions $\leq 5\%$. The upper red bar (where present) indicates the fraction of residues that have poor fit to the electron density. The numeric value is given above the bar.

Mol	Chain	Length	Quality of chain
1	A	230	
1	H	230	
2	B	210	
2	L	210	
3	C	353	

Continued on next page...

Continued from previous page...

Mol	Chain	Length	Quality of chain
3	D	353	<p>% 76% 18% • 5%</p>
3	G	353	<p>% 74% 21% • •</p>
3	I	353	<p>% 71% 21% • 7%</p>
4	E	5	<p>20% 80%</p>
5	F	4	<p>100%</p>
6	J	8	<p>75% 25%</p>
7	K	2	<p>100%</p>

2 Entry composition [i](#)

There are 8 unique types of molecules in this entry. The entry contains 16613 atoms, of which 0 are hydrogens and 0 are deuteriums.

In the tables below, the ZeroOcc column contains the number of atoms modelled with zero occupancy, the AltConf column contains the number of residues with at least one atom in alternate conformation and the Trace column contains the number of residues modelled with at most 2 atoms.

- Molecule 1 is a protein called germline 3BNC60 heavy chain.

Mol	Chain	Residues	Atoms					ZeroOcc	AltConf	Trace
			Total	C	N	O	S			
1	H	215	Total 1614	C 1020	N 273	O 313	S 8	0	0	0
1	A	214	Total 1596	C 1008	N 268	O 312	S 8	0	0	0

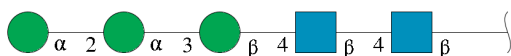
- Molecule 2 is a protein called germline 3BNC60 light chain.

Mol	Chain	Residues	Atoms					ZeroOcc	AltConf	Trace
			Total	C	N	O	S			
2	L	202	Total 1486	C 932	N 242	O 307	S 5	0	0	0
2	B	209	Total 1549	C 969	N 254	O 321	S 5	0	0	0

- Molecule 3 is a protein called 426c.TM4deltaV1-3 gp120.

Mol	Chain	Residues	Atoms					ZeroOcc	AltConf	Trace
			Total	C	N	O	S			
3	C	338	Total 2536	C 1598	N 432	O 484	S 22	0	0	0
3	D	337	Total 2494	C 1574	N 428	O 470	S 22	0	0	0
3	G	338	Total 2508	C 1582	N 431	O 473	S 22	0	0	0
3	I	329	Total 2387	C 1502	N 409	O 455	S 21	0	0	0

- Molecule 4 is an oligosaccharide called alpha-D-mannopyranose-(1-2)-alpha-D-mannopyranose-(1-3)-beta-D-mannopyranose-(1-4)-2-acetamido-2-deoxy-beta-D-glucopyranose-(1-4)-2-acetamido-2-deoxy-beta-D-glucopyranose.



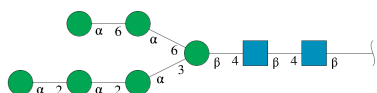
Mol	Chain	Residues	Atoms				ZeroOcc	AltConf	Trace
			Total	C	N	O			
4	E	5	61	34	2	25	0	0	0

- Molecule 5 is an oligosaccharide called alpha-D-mannopyranose-(1-3)-beta-D-mannopyranose-(1-4)-2-acetamido-2-deoxy-beta-D-glucopyranose-(1-4)-2-acetamido-2-deoxy-beta-D-glucopyranose.



Mol	Chain	Residues	Atoms				ZeroOcc	AltConf	Trace
			Total	C	N	O			
5	F	4	50	28	2	20	0	0	0

- Molecule 6 is an oligosaccharide called alpha-D-mannopyranose-(1-2)-alpha-D-mannopyranose-(1-2)-alpha-D-mannopyranose-(1-3)-[alpha-D-mannopyranose-(1-6)-alpha-D-mannopyranose-(1-6)]beta-D-mannopyranose-(1-4)-2-acetamido-2-deoxy-beta-D-glucopyranose-(1-4)-2-acetamido-2-deoxy-beta-D-glucopyranose.



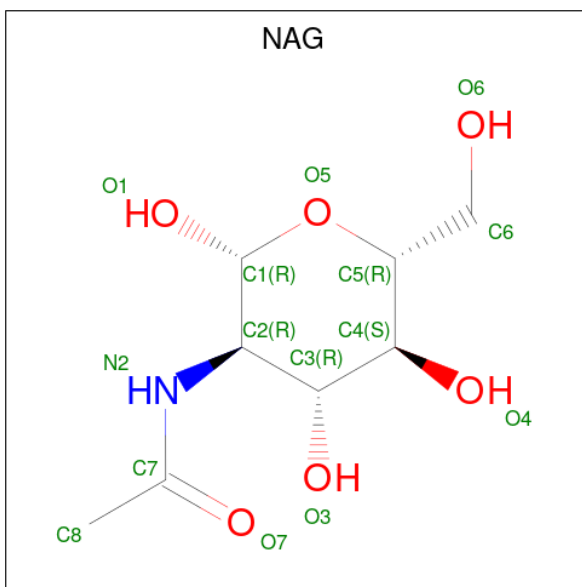
Mol	Chain	Residues	Atoms				ZeroOcc	AltConf	Trace
			Total	C	N	O			
6	J	8	94	52	2	40	0	0	0

- Molecule 7 is an oligosaccharide called 2-acetamido-2-deoxy-beta-D-glucopyranose-(1-4)-2-acetamido-2-deoxy-beta-D-glucopyranose.



Mol	Chain	Residues	Atoms				ZeroOcc	AltConf	Trace
			Total	C	N	O			
7	K	2	28	16	2	10	0	0	0

- Molecule 8 is 2-acetamido-2-deoxy-beta-D-glucopyranose (CCD ID: NAG) (formula: C₈H₁₅NO₆).



Mol	Chain	Residues	Atoms				ZeroOcc	AltConf
			Total	C	N	O		
8	C	1	Total 14	8	1	5	0	0
8	C	1	Total 14	8	1	5	0	0
8	C	1	Total 14	8	1	5	0	0
8	C	1	Total 14	8	1	5	0	0
8	D	1	Total 14	8	1	5	0	0
8	D	1	Total 14	8	1	5	0	0
8	D	1	Total 14	8	1	5	0	0
8	D	1	Total 14	8	1	5	0	0
8	G	1	Total 14	8	1	5	0	0
8	G	1	Total 14	8	1	5	0	0
8	G	1	Total 14	8	1	5	0	0
8	G	1	Total 14	8	1	5	0	0
8	I	1	Total 14	8	1	5	0	0
8	I	1	Total 14	8	1	5	0	0

Continued on next page...


Continued from previous page...

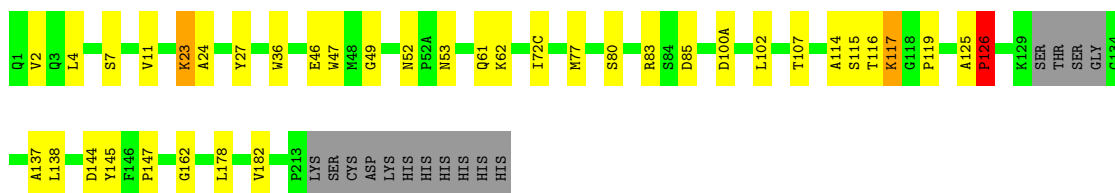
Mol	Chain	Residues	Atoms				ZeroOcc	AltConf
			Total	C	N	O		
8	I	1	14	8	1	5	0	0

3 Residue-property plots

These plots are drawn for all protein, RNA, DNA and oligosaccharide chains in the entry. The first graphic for a chain summarises the proportions of the various outlier classes displayed in the second graphic. The second graphic shows the sequence view annotated by issues in geometry and electron density. Residues are color-coded according to the number of geometric quality criteria for which they contain at least one outlier: green = 0, yellow = 1, orange = 2 and red = 3 or more. A red dot above a residue indicates a poor fit to the electron density ($RSRZ > 2$). Stretches of 2 or more consecutive residues without any outlier are shown as a green connector. Residues present in the sample, but not in the model, are shown in grey.

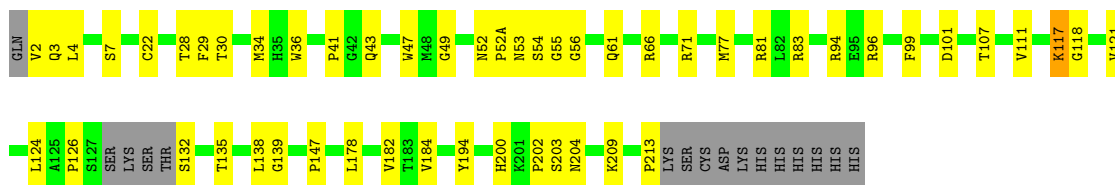
- Molecule 1: germline 3BNC60 heavy chain

Chain H: 



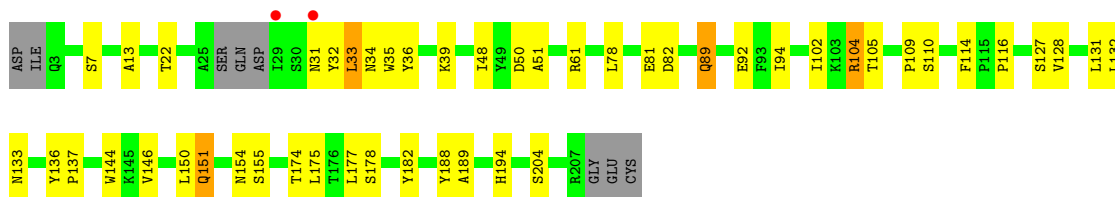
- Molecule 1: germline 3BNC60 heavy chain

Chain A: 



- Molecule 2: germline 3BNC60 light chain

Chain L: 



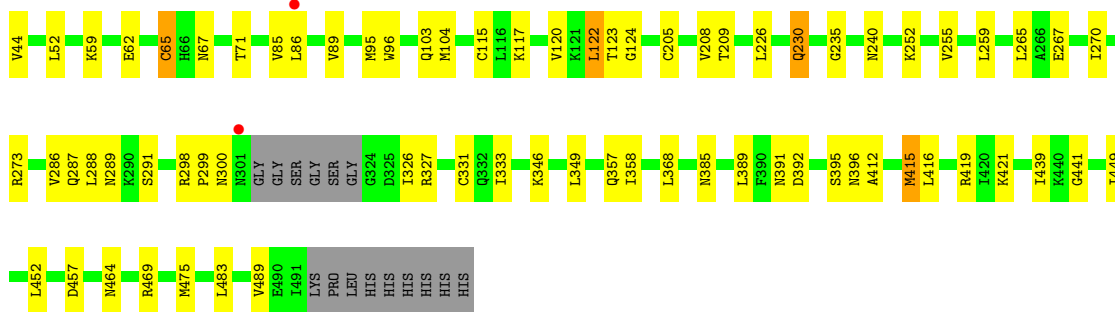
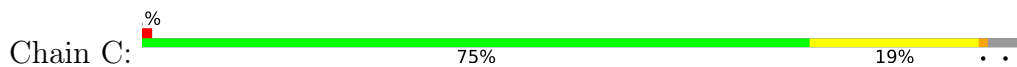
- Molecule 2: germline 3BNC60 light chain

Chain B: 

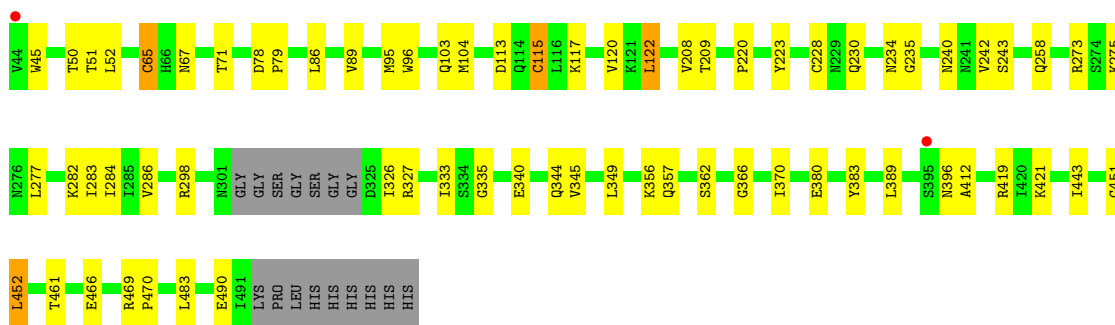
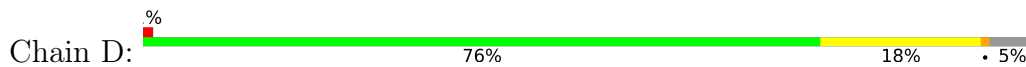




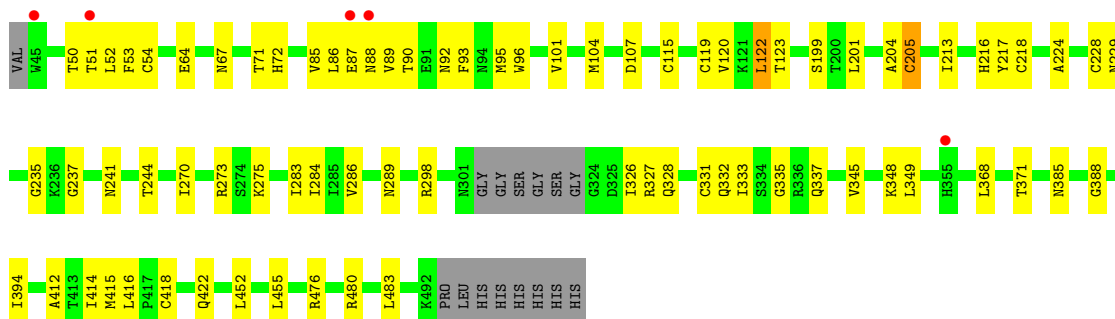
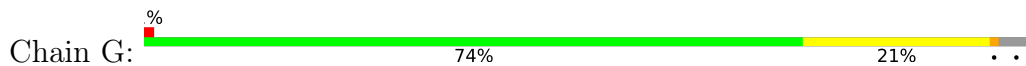
- Molecule 3: 426c.TM4deltaV1-3 gp120



- Molecule 3: 426c.TM4deltaV1-3 gp120

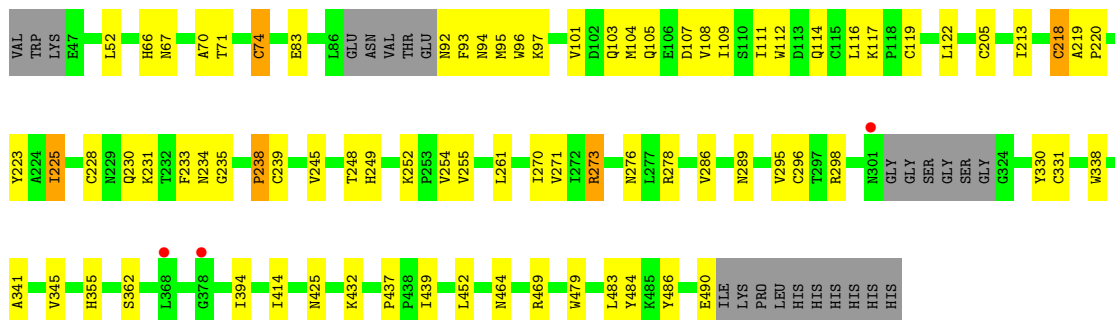


- Molecule 3: 426c.TM4deltaV1-3 gp120



- Molecule 3: 426c.TM4deltaV1-3 gp120





- Molecule 4: alpha-D-mannopyranose-(1-2)-alpha-D-mannopyranose-(1-3)-beta-D-mannopyranose-(1-4)-2-acetamido-2-deoxy-beta-D-glucopyranose-(1-4)-2-acetamido-2-deoxy-beta-D-glucopyranose

Chain E: 20% 80%

MAG1
MAG2
BMA3
MAN4
MAN5

- Molecule 5: alpha-D-mannopyranose-(1-3)-beta-D-mannopyranose-(1-4)-2-acetamido-2-deoxy-beta-D-glucopyranose-(1-4)-2-acetamido-2-deoxy-beta-D-glucopyranose

Chain F: 100%

MAG1
MAG2
BMA3
MAN4

- Molecule 6: alpha-D-mannopyranose-(1-2)-alpha-D-mannopyranose-(1-2)-alpha-D-mannopyranose-(1-3)-[alpha-D-mannopyranose-(1-6)-alpha-D-mannopyranose-(1-6)]beta-D-mannopyranose-(1-4)-2-acetamido-2-deoxy-beta-D-glucopyranose-(1-4)-2-acetamido-2-deoxy-beta-D-glucopyranose

Chain J: 75% 25%

MAG1
MAG2
BMA3
MAN4
MAN5
MAN6
MAN7
MAN8

- Molecule 7: 2-acetamido-2-deoxy-beta-D-glucopyranose-(1-4)-2-acetamido-2-deoxy-beta-D-glucopyranose

Chain K: 100%

MAG1
MAG2

4 Data and refinement statistics

Property	Value	Source
Space group	P 21 21 21	Depositor
Cell constants a, b, c, α , β , γ	103.07Å 134.10Å 194.96Å 90.00° 90.00° 90.00°	Depositor
Resolution (Å)	39.42 – 3.17 39.42 – 3.17	Depositor EDS
% Data completeness (in resolution range)	99.8 (39.42-3.17) 95.1 (39.42-3.17)	Depositor EDS
R_{merge}	0.56	Depositor
R_{sym}	(Not available)	Depositor
$\langle I/\sigma(I) \rangle$ ¹	2.10 (at 3.18Å)	Xtrriage
Refinement program	PHENIX (1.10.1_2155: ???)	Depositor
R, R_{free}	0.202 , 0.266 0.202 , 0.266	Depositor DCC
R_{free} test set	1105 reflections (2.38%)	wwPDB-VP
Wilson B-factor (Å ²)	65.5	Xtrriage
Anisotropy	0.059	Xtrriage
Bulk solvent k_{sol} (e/Å ³), B_{sol} (Å ²)	0.29 , 45.5	EDS
L-test for twinning ²	$\langle L \rangle = 0.47$, $\langle L^2 \rangle = 0.30$	Xtrriage
Estimated twinning fraction	No twinning to report.	Xtrriage
F_o, F_c correlation	0.92	EDS
Total number of atoms	16613	wwPDB-VP
Average B, all atoms (Å ²)	66.0	wwPDB-VP

Xtrriage's analysis on translational NCS is as follows: *The largest off-origin peak in the Patterson function is 3.11% of the height of the origin peak. No significant pseudotranslation is detected.*

¹Intensities estimated from amplitudes.

²Theoretical values of $\langle |L| \rangle$, $\langle L^2 \rangle$ for acentric reflections are 0.5, 0.333 respectively for untwinned datasets, and 0.375, 0.2 for perfectly twinned datasets.

5 Model quality [i](#)

5.1 Standard geometry [i](#)

Bond lengths and bond angles in the following residue types are not validated in this section: NAG, MAN, BMA

The Z score for a bond length (or angle) is the number of standard deviations the observed value is removed from the expected value. A bond length (or angle) with $|Z| > 5$ is considered an outlier worth inspection. RMSZ is the root-mean-square of all Z scores of the bond lengths (or angles).

Mol	Chain	Bond lengths		Bond angles	
		RMSZ	# Z >5	RMSZ	# Z >5
1	A	0.75	1/1638 (0.1%)	0.79	0/2239
1	H	0.80	0/1656	0.90	1/2261 (0.0%)
2	B	0.71	0/1583	0.80	2/2165 (0.1%)
2	L	0.70	0/1519	0.79	0/2079
3	C	0.73	1/2589 (0.0%)	0.84	4/3531 (0.1%)
3	D	0.76	1/2545 (0.0%)	0.81	2/3472 (0.1%)
3	G	0.80	1/2560 (0.0%)	0.86	3/3493 (0.1%)
3	I	0.70	1/2436 (0.0%)	0.82	4/3334 (0.1%)
All	All	0.74	5/16526 (0.0%)	0.83	16/22574 (0.1%)

Chiral center outliers are detected by calculating the chiral volume of a chiral center and verifying if the center is modelled as a planar moiety or with the opposite hand. A planarity outlier is detected by checking planarity of atoms in a peptide group, atoms in a mainchain group or atoms of a sidechain that are expected to be planar.

Mol	Chain	#Chirality outliers	#Planarity outliers
3	C	0	1

All (5) bond length outliers are listed below:

Mol	Chain	Res	Type	Atoms	Z	Observed(Å)	Ideal(Å)
3	I	437	PRO	CA-C	-9.27	1.46	1.51
3	D	65	CYS	CB-SG	7.36	2.05	1.81
3	G	337	GLN	CD-OE1	5.64	1.34	1.23
1	A	182	VAL	CB-CG1	-5.34	1.34	1.52
3	C	205	CYS	CB-SG	-5.23	1.64	1.81

All (16) bond angle outliers are listed below:

Mol	Chain	Res	Type	Atoms	Z	Observed(°)	Ideal(°)
3	I	437	PRO	O-C-N	-7.26	117.97	121.31
3	C	65	CYS	CA-CB-SG	-7.18	97.88	114.40
3	I	273	ARG	NE-CZ-NH2	6.92	125.42	119.20
3	D	65	CYS	CA-CB-SG	-6.29	99.93	114.40
3	G	115	CYS	CA-CB-SG	-6.13	100.29	114.40
3	C	288	LEU	CA-C-N	5.81	128.54	120.29
3	C	288	LEU	C-N-CA	5.81	128.54	120.29
2	B	26	SER	N-CA-C	5.72	117.52	111.28
3	C	117	LYS	N-CA-C	-5.43	101.69	109.24
3	I	117	LYS	N-CA-C	-5.43	101.70	109.24
3	D	357	GLN	CB-CA-C	5.40	118.74	109.51
3	G	64	GLU	CA-C-N	5.25	127.74	120.29
3	G	64	GLU	C-N-CA	5.25	127.74	120.29
2	B	27	GLN	N-CA-C	5.14	116.88	111.28
3	I	273	ARG	NE-CZ-NH1	-5.09	116.41	121.50
1	H	126	PRO	CA-N-CD	-5.02	104.97	112.00

There are no chirality outliers.

All (1) planarity outliers are listed below:

Mol	Chain	Res	Type	Group
3	C	396	ASN	Peptide

5.2 Too-close contacts [i](#)

In the following table, the Non-H and H(model) columns list the number of non-hydrogen atoms and hydrogen atoms in the chain respectively. The H(added) column lists the number of hydrogen atoms added and optimized by MolProbity. The Clashes column lists the number of clashes within the asymmetric unit, whereas Symm-Clashes lists symmetry-related clashes.

Mol	Chain	Non-H	H(model)	H(added)	Clashes	Symm-Clashes
1	A	1596	0	1509	41	0
1	H	1614	0	1539	23	0
2	B	1549	0	1421	49	0
2	L	1486	0	1350	39	0
3	C	2536	0	2378	45	0
3	D	2494	0	2338	51	0
3	G	2508	0	2350	61	0
3	I	2387	0	2173	62	0
4	E	61	0	52	4	0
5	F	50	0	43	5	0
6	J	94	0	79	1	0

Continued on next page...

Continued from previous page...

Mol	Chain	Non-H	H(model)	H(added)	Clashes	Symm-Clashes
7	K	28	0	25	4	0
8	C	56	0	52	0	0
8	D	56	0	52	2	0
8	G	56	0	52	7	0
8	I	42	0	39	3	0
All	All	16613	0	15452	367	0

The all-atom clashscore is defined as the number of clashes found per 1000 atoms (including hydrogen atoms). The all-atom clashscore for this structure is 11.

All (367) close contacts within the same asymmetric unit are listed below, sorted by their clash magnitude.

Atom-1	Atom-2	Interatomic distance (Å)	Clash overlap (Å)
3:D:65:CYS:CB	3:D:65:CYS:SG	2.05	1.43
1:A:7:SER:O	1:A:107:THR:HG22	1.51	1.09
1:A:7:SER:O	1:A:107:THR:CG2	2.07	1.03
1:H:126:PRO:HB3	1:H:137:ALA:O	1.66	0.95
1:H:7:SER:O	1:H:107:THR:CG2	2.19	0.90
7:K:1:NAG:H62	7:K:2:NAG:C7	2.01	0.90
3:I:95:MET:HE1	3:I:273:ARG:HB3	1.55	0.89
3:D:209:THR:CG2	5:F:4:MAN:H61	2.04	0.88
3:I:94:ASN:OD1	3:I:96:TRP:N	2.09	0.85
1:A:4:LEU:HD22	1:A:22:CYS:SG	2.18	0.84
3:I:95:MET:HE2	3:I:235:GLY:HA3	1.59	0.84
1:H:7:SER:O	1:H:107:THR:HG21	1.77	0.83
3:G:298:ARG:NH1	3:G:326:ILE:O	2.14	0.80
3:C:298:ARG:NH1	3:C:326:ILE:O	2.14	0.79
3:D:113:ASP:O	3:D:117:LYS:NZ	2.17	0.78
3:D:345:VAL:O	3:D:349:LEU:HG	1.83	0.77
1:A:99:PHE:CD1	2:B:32:TYR:CE1	2.72	0.77
3:G:122:LEU:HD12	3:G:123:THR:N	1.99	0.77
2:L:78:LEU:HD21	2:L:102:ILE:HD13	1.64	0.77
3:D:209:THR:HG23	5:F:4:MAN:H61	1.64	0.76
1:H:7:SER:O	1:H:107:THR:HG22	1.85	0.76
3:G:95:MET:HE1	3:G:273:ARG:HD3	1.67	0.76
3:D:95:MET:HE1	3:D:273:ARG:HD3	1.66	0.76
2:B:1:ASP:O	2:B:2:ILE:HD13	1.85	0.75
1:A:99:PHE:CE1	2:B:32:TYR:CE1	2.75	0.74
2:L:78:LEU:HD21	2:L:102:ILE:CD1	2.17	0.74
3:G:95:MET:HE1	3:G:273:ARG:HB3	1.69	0.74
3:G:67:ASN:O	3:G:71:THR:HG23	1.87	0.74

Continued on next page...

Continued from previous page...

Atom-1	Atom-2	Interatomic distance (Å)	Clash overlap (Å)
1:A:117:LYS:NZ	1:A:118:GLY:O	2.21	0.74
3:D:65:CYS:SG	3:D:65:CYS:CA	2.76	0.73
3:D:298:ARG:NH1	3:D:326:ILE:O	2.20	0.73
3:G:327:ARG:NH1	3:G:422:GLN:OE1	2.22	0.72
3:G:72:HIS:O	3:I:432:LYS:HE2	1.88	0.72
3:C:65:CYS:HG	3:C:115:CYS:HG	1.36	0.72
1:A:99:PHE:CE1	2:B:32:TYR:HE1	2.09	0.71
3:C:230:GLN:HG3	3:C:240:ASN:OD1	1.91	0.70
8:D:601:NAG:O7	8:D:601:NAG:O3	2.10	0.69
2:L:36:TYR:HE2	2:L:89:GLN:OE1	1.76	0.69
1:A:99:PHE:CD1	2:B:32:TYR:CD1	2.82	0.68
3:I:94:ASN:OD1	3:I:97:LYS:N	2.27	0.67
1:A:7:SER:O	1:A:107:THR:HG21	1.91	0.67
3:I:271:VAL:HG11	3:I:273:ARG:HE	1.59	0.66
2:B:120:GLN:HG2	2:B:125:THR:O	1.96	0.65
3:I:338:TRP:CD1	3:I:394:ILE:HD13	2.31	0.65
2:B:33:LEU:HD22	2:B:71:PHE:CG	2.32	0.65
3:G:345:VAL:O	3:G:349:LEU:HG	1.97	0.65
1:A:28:THR:HG22	1:A:29:PHE:O	1.97	0.65
1:A:30:THR:HA	1:A:52(A):PRO:HB2	1.79	0.64
3:D:209:THR:HG21	5:F:4:MAN:H61	1.79	0.62
3:I:220:PRO:HG2	3:I:223:TYR:HD2	1.64	0.62
3:I:252:LYS:NZ	7:K:1:NAG:O6	2.32	0.62
3:G:50:THR:OG1	3:G:51:THR:N	2.29	0.62
3:D:228:CYS:SG	3:D:230:GLN:HB2	2.39	0.61
3:G:86:LEU:HB3	3:G:89:VAL:HG21	1.81	0.61
3:I:271:VAL:CG1	3:I:273:ARG:HE	2.13	0.61
1:H:114:ALA:HB1	1:H:115:SER:HB2	1.83	0.61
2:B:13:ALA:HB3	2:B:78:LEU:HD22	1.83	0.60
2:L:33:LEU:HD13	2:L:34:ASN:N	2.16	0.60
1:A:99:PHE:HE1	2:B:32:TYR:HE1	1.48	0.60
1:A:4:LEU:CD2	1:A:22:CYS:SG	2.89	0.60
3:D:65:CYS:SG	3:D:115:CYS:SG	3.00	0.60
2:B:141:LYS:CB	2:B:193:THR:HB	2.32	0.60
3:C:265:LEU:HD11	3:C:291:SER:HB3	1.84	0.60
2:B:33:LEU:HD11	2:B:88:CYS:HB2	1.84	0.59
2:L:36:TYR:CE2	2:L:89:GLN:OE1	2.56	0.59
1:A:36:TRP:CE2	1:A:77:MET:HB2	2.38	0.59
2:B:138:ARG:NH2	2:B:159:VAL:HG21	2.17	0.59
2:B:116:PRO:HD3	2:B:128:VAL:HG12	1.85	0.58
1:H:126:PRO:HG3	1:H:138:LEU:HB3	1.86	0.58

Continued on next page...

Continued from previous page...

Atom-1	Atom-2	Interatomic distance (Å)	Clash overlap (Å)
3:G:213:ILE:HG13	3:G:213:ILE:O	2.03	0.58
3:C:298:ARG:NH2	3:C:439:ILE:O	2.37	0.58
2:L:39:LYS:NZ	2:L:81:GLU:O	2.33	0.57
3:G:298:ARG:HG2	3:G:328:GLN:O	2.04	0.57
2:L:116:PRO:HD3	2:L:128:VAL:HG22	1.86	0.57
3:G:289:ASN:ND2	8:G:601:NAG:O7	2.36	0.57
1:H:23:LYS:NZ	1:H:72(C):ILE:O	2.36	0.57
3:C:252:LYS:NZ	4:E:1:NAG:O6	2.37	0.57
1:A:55:GLY:O	3:D:366:GLY:HA2	2.04	0.57
2:B:128:VAL:HG23	2:B:175:LEU:HB3	1.86	0.57
3:G:119:CYS:N	3:G:205:CYS:SG	2.78	0.57
3:G:122:LEU:HD12	3:G:123:THR:H	1.67	0.57
3:G:85:VAL:HG12	3:G:87:GLU:H	1.70	0.56
3:I:261:LEU:HD13	7:K:1:NAG:H82	1.87	0.56
3:D:104:MET:HE3	3:D:483:LEU:HD11	1.86	0.56
3:G:331:CYS:HB2	3:G:416:LEU:HB2	1.88	0.56
3:G:385:ASN:O	3:G:416:LEU:HG	2.06	0.56
2:B:50:ASP:O	2:B:51:ALA:HB3	2.05	0.56
3:I:70:ALA:O	3:I:74:CYS:N	2.38	0.56
2:L:136:TYR:CG	2:L:137:PRO:HA	2.41	0.55
3:D:396:ASN:O	3:D:412:ALA:HB3	2.05	0.55
1:A:99:PHE:HD1	2:B:32:TYR:CE1	2.23	0.55
3:I:234:ASN:OD1	3:I:235:GLY:N	2.40	0.55
2:B:128:VAL:CG2	2:B:175:LEU:HB3	2.38	0.54
3:D:333:ILE:HD13	3:D:389:LEU:HD21	1.90	0.54
3:I:298:ARG:C	3:I:298:ARG:HD2	2.31	0.54
3:I:414:ILE:HD13	8:I:602:NAG:H81	1.88	0.54
3:G:93:PHE:CE2	3:G:228:CYS:HB2	2.43	0.54
1:H:117:LYS:HD3	1:H:144:ASP:O	2.08	0.54
1:H:47:TRP:CZ2	1:H:49:GLY:HA2	2.43	0.53
3:D:362:SER:O	3:D:469:ARG:HD3	2.09	0.53
2:L:61:ARG:NH2	2:L:82:ASP:OD1	2.41	0.53
2:B:33:LEU:CD2	2:B:71:PHE:CG	2.92	0.53
2:B:143:GLN:OE1	2:B:150:LEU:HD11	2.07	0.53
3:C:331:CYS:HB2	3:C:416:LEU:HB2	1.91	0.53
3:I:273:ARG:NH1	3:I:484:TYR:CG	2.77	0.53
1:A:132:SER:N	1:A:135:THR:O	2.42	0.52
3:D:65:CYS:HG	3:D:115:CYS:HG	1.56	0.52
2:B:30:SER:CB	2:B:31:ASN:HA	2.39	0.52
8:I:601:NAG:O7	8:I:601:NAG:O3	2.23	0.52
2:L:104:ARG:NH1	2:L:105:THR:OG1	2.42	0.52

Continued on next page...

Continued from previous page...

Atom-1	Atom-2	Interatomic distance (Å)	Clash overlap (Å)
3:G:348:LYS:HD3	8:G:601:NAG:O6	2.10	0.52
2:L:177:LEU:HD12	2:L:178:SER:O	2.07	0.52
3:D:52:LEU:N	3:D:103:GLN:HE22	2.07	0.52
2:L:78:LEU:CD2	2:L:102:ILE:CD1	2.87	0.52
7:K:1:NAG:H62	7:K:2:NAG:C8	2.40	0.52
3:I:66:HIS:HB3	3:I:213:ILE:HG12	1.92	0.51
3:D:258:GLN:CD	3:D:470:PRO:HB2	2.35	0.51
3:G:89:VAL:HG12	3:G:90:THR:N	2.25	0.51
3:G:394:ILE:HA	8:G:603:NAG:O7	2.10	0.51
3:I:70:ALA:O	3:I:74:CYS:HB2	2.11	0.51
2:L:177:LEU:HD12	2:L:177:LEU:C	2.36	0.51
3:C:104:MET:HE3	3:C:483:LEU:HD11	1.93	0.51
3:C:240:ASN:OD1	3:C:240:ASN:N	2.38	0.51
3:D:356:LYS:HG2	3:D:466:GLU:HG2	1.93	0.51
3:I:101:VAL:HG13	3:I:479:TRP:HB2	1.93	0.51
3:I:248:THR:HG22	3:I:486:TYR:CD2	2.46	0.51
3:G:122:LEU:HD12	3:G:199:SER:O	2.11	0.51
3:G:332:GLN:HG2	3:G:415:MET:CE	2.41	0.50
1:H:24:ALA:HB1	1:H:27:TYR:CE1	2.46	0.50
1:H:85:ASP:OD1	1:H:85:ASP:C	2.54	0.50
3:C:95:MET:HE2	3:C:235:GLY:HA3	1.92	0.50
3:C:395:SER:OG	3:C:412:ALA:HB3	2.11	0.50
3:G:331:CYS:SG	3:G:418:CYS:SG	3.10	0.50
2:L:33:LEU:HD13	2:L:33:LEU:C	2.36	0.50
3:C:86:LEU:CB	3:C:89:VAL:HG11	2.42	0.50
3:C:44:VAL:CB	3:C:226:LEU:HD11	2.42	0.50
3:C:270:ILE:HG12	3:C:289:ASN:HB2	1.93	0.50
2:L:128:VAL:HG12	2:L:144:TRP:CH2	2.46	0.50
1:A:55:GLY:N	1:A:56:GLY:HA3	2.26	0.49
3:G:332:GLN:NE2	3:G:415:MET:HE1	2.27	0.49
1:A:178:LEU:HD12	1:A:178:LEU:C	2.37	0.49
3:C:85:VAL:O	3:C:86:LEU:HD23	2.12	0.49
3:I:230:GLN:HB2	3:I:239:CYS:SG	2.52	0.49
3:C:208:VAL:HG22	3:C:209:THR:N	2.28	0.49
3:C:255:VAL:HG13	3:C:475:MET:SD	2.52	0.49
3:G:335:GLY:N	3:G:412:ALA:O	2.43	0.49
3:D:67:ASN:O	3:D:71:THR:HG23	2.13	0.49
4:E:2:NAG:H62	4:E:3:BMA:C1	2.43	0.49
4:E:1:NAG:H61	4:E:2:NAG:N2	2.28	0.48
1:A:96:ARG:HB2	1:A:101:ASP:OD1	2.13	0.48
3:G:122:LEU:CD1	3:G:199:SER:O	2.61	0.48

Continued on next page...

Continued from previous page...

Atom-1	Atom-2	Interatomic distance (Å)	Clash overlap (Å)
1:A:83:ARG:O	1:A:111:VAL:HG11	2.12	0.48
2:B:39:LYS:NZ	2:B:81:GLU:O	2.28	0.48
3:G:53:PHE:CD1	3:G:53:PHE:C	2.91	0.48
3:I:93:PHE:HB2	3:I:233:PHE:CE2	2.48	0.48
3:G:286:VAL:HB	3:G:452:LEU:HB2	1.96	0.48
3:I:83:GLU:HA	3:I:245:VAL:HG12	1.95	0.48
3:I:355:HIS:O	3:I:464:ASN:ND2	2.19	0.48
3:C:226:LEU:CD1	3:C:489:VAL:HG11	2.44	0.48
3:I:341:ALA:O	3:I:345:VAL:HG12	2.13	0.48
1:A:29:PHE:O	1:A:30:THR:OG1	2.28	0.47
3:G:104:MET:HE3	3:G:483:LEU:HD11	1.96	0.47
2:L:31:ASN:CB	2:L:32:TYR:CD1	2.97	0.47
2:L:131:LEU:C	2:L:132:LEU:HD12	2.39	0.47
3:I:104:MET:O	3:I:108:VAL:HG23	2.15	0.47
3:C:270:ILE:HG23	3:C:287:GLN:O	2.13	0.47
3:C:368:LEU:CD1	3:C:421:LYS:HE2	2.45	0.47
3:G:95:MET:HE2	3:G:235:GLY:HA3	1.96	0.47
5:F:2:NAG:H62	5:F:3:BMA:C1	2.45	0.47
2:B:12:SER:HA	2:B:101:ASP:O	2.14	0.47
2:B:33:LEU:HD22	2:B:71:PHE:CD1	2.48	0.47
3:I:52:LEU:HD12	3:I:103:GLN:OE1	2.15	0.47
3:I:108:VAL:HG21	3:I:479:TRP:CZ2	2.49	0.47
1:A:94:ARG:NH2	1:A:101:ASP:OD2	2.36	0.47
3:G:122:LEU:HD12	3:G:122:LEU:C	2.32	0.47
3:C:327:ARG:HB2	3:C:419:ARG:CZ	2.45	0.47
3:I:298:ARG:NH2	3:I:439:ILE:O	2.42	0.47
2:L:31:ASN:CB	2:L:32:TYR:HA	2.45	0.47
3:G:52:LEU:HD12	3:G:52:LEU:H	1.80	0.47
2:B:16:GLY:HA2	2:B:77:SER:OG	2.14	0.47
3:C:457:ASP:OD2	3:C:469:ARG:NH2	2.47	0.47
2:L:109:PRO:HD3	2:L:194:HIS:CD2	2.50	0.46
3:C:62:GLU:OE2	4:E:4:MAN:H62	2.14	0.46
3:I:107:ASP:O	3:I:111:ILE:HG13	2.16	0.46
1:H:11:VAL:HG11	1:H:116:THR:HG22	1.97	0.46
3:C:300:ASN:HD22	3:C:441:GLY:HA2	1.80	0.46
3:G:224:ALA:HB1	3:G:244:THR:HG23	1.97	0.46
3:I:112:TRP:CZ2	3:I:255:VAL:HG21	2.50	0.46
2:L:35:TRP:HB2	2:L:48:ILE:HB	1.97	0.46
2:L:150:LEU:C	2:L:151:GLN:HG2	2.40	0.46
1:A:124:LEU:HB2	1:A:139:GLY:C	2.41	0.46
2:B:136:TYR:CG	2:B:137:PRO:HA	2.50	0.46

Continued on next page...

Continued from previous page...

Atom-1	Atom-2	Interatomic distance (Å)	Clash overlap (Å)
8:D:601:NAG:HO3	8:D:601:NAG:C7	2.18	0.46
2:B:1:ASP:O	2:B:2:ILE:CD1	2.60	0.46
3:I:94:ASN:OD1	3:I:94:ASN:C	2.58	0.46
1:H:162:GLY:O	1:H:182:VAL:HA	2.16	0.46
2:L:177:LEU:HD11	2:L:182:TYR:HB2	1.97	0.46
1:H:36:TRP:CE2	1:H:77:MET:HB2	2.51	0.46
3:I:104:MET:CE	3:I:479:TRP:HB3	2.46	0.46
1:A:53:ASN:O	1:A:71:ARG:NH2	2.49	0.46
3:D:380:GLU:HG3	3:D:443:ILE:HD13	1.98	0.46
3:G:414:ILE:HD13	8:G:603:NAG:H81	1.97	0.46
3:D:45:TRP:CB	3:D:490:GLU:O	2.64	0.45
3:G:388:GLY:O	8:G:603:NAG:H81	2.16	0.45
3:I:112:TRP:CE3	3:I:116:LEU:HD12	2.51	0.45
3:I:220:PRO:HG2	3:I:223:TYR:CD2	2.49	0.45
1:A:96:ARG:NH1	2:B:55:GLU:OE2	2.49	0.45
1:A:200:HIS:CE1	1:A:203:SER:HG	2.35	0.45
3:D:50:THR:OG1	3:D:51:THR:N	2.49	0.45
2:L:182:TYR:O	2:L:188:TYR:OH	2.35	0.45
3:D:298:ARG:C	3:D:298:ARG:HD2	2.42	0.45
3:D:356:LYS:NZ	3:D:461:THR:HG21	2.31	0.45
2:L:33:LEU:C	2:L:33:LEU:CD1	2.90	0.45
3:G:123:THR:O	3:G:199:SER:O	2.35	0.45
2:B:33:LEU:HD12	2:B:89:GLN:O	2.16	0.45
2:B:35:TRP:CE2	2:B:73:PHE:HB2	2.52	0.45
3:G:88:ASN:C	3:G:89:VAL:HG23	2.42	0.45
3:I:93:PHE:HB2	3:I:233:PHE:CZ	2.51	0.45
1:A:126:PRO:HD2	1:A:213:PRO:HA	1.98	0.45
3:C:259:LEU:HD13	3:C:449:ILE:HD13	1.99	0.45
3:C:346:LYS:HG2	3:C:358:ILE:CG2	2.47	0.45
3:I:67:ASN:O	3:I:71:THR:HG23	2.17	0.45
2:L:7:SER:HB3	2:L:22:THR:CG2	2.47	0.45
2:B:183:GLU:HA	2:B:207:ARG:CZ	2.47	0.45
3:D:65:CYS:HB2	3:D:208:VAL:HG21	1.99	0.45
3:D:242:VAL:HG12	3:D:243:SER:N	2.31	0.45
3:I:234:ASN:OD1	3:I:234:ASN:C	2.60	0.45
2:L:177:LEU:HD11	2:L:182:TYR:CA	2.47	0.45
3:G:101:VAL:HG21	3:G:480:ARG:HG2	1.99	0.45
2:L:13:ALA:HB3	2:L:78:LEU:HD22	1.98	0.44
1:A:66:ARG:HG2	1:A:81:ARG:NH2	2.32	0.44
3:C:95:MET:HE1	3:C:273:ARG:HB3	2.00	0.44
3:C:333:ILE:HD13	3:C:389:LEU:HD21	1.99	0.44

Continued on next page...

Continued from previous page...

Atom-1	Atom-2	Interatomic distance (Å)	Clash overlap (Å)
3:C:391:ASN:OD1	3:C:392:ASP:N	2.50	0.44
3:G:107:ASP:OD2	3:G:217:TYR:OH	2.29	0.44
1:A:54:SER:HB2	3:D:370:ILE:CD1	2.47	0.44
3:D:220:PRO:HG2	3:D:223:TYR:HD2	1.82	0.44
2:B:205:PHE:CD1	2:B:205:PHE:C	2.95	0.44
3:D:78:ASP:OD1	3:D:79:PRO:HD2	2.17	0.44
2:B:157:GLU:HA	2:B:172:SER:O	2.17	0.44
3:C:298:ARG:HD2	3:C:299:PRO:O	2.18	0.44
1:A:41:PRO:O	1:A:43:GLN:HG2	2.17	0.44
2:B:185:HIS:O	2:B:207:ARG:HD3	2.18	0.44
3:D:327:ARG:HB2	3:D:419:ARG:CZ	2.47	0.44
3:I:101:VAL:HG22	3:I:483:LEU:HD12	2.00	0.44
3:I:254:VAL:HG11	3:I:261:LEU:HB2	2.00	0.44
3:C:89:VAL:O	3:C:240:ASN:O	2.35	0.44
3:C:226:LEU:HD11	3:C:489:VAL:HG11	2.00	0.44
3:I:219:ALA:HB2	3:I:225:ILE:HG12	2.00	0.44
1:H:11:VAL:HB	1:H:147:PRO:HG3	1.98	0.43
2:B:109:PRO:HB3	2:B:135:PHE:HB3	2.00	0.43
3:G:283:ILE:HG13	3:G:284:ILE:N	2.33	0.43
2:L:127:SER:HA	2:L:175:LEU:O	2.18	0.43
3:G:92:ASN:HA	3:G:237:GLY:O	2.18	0.43
3:I:70:ALA:O	3:I:74:CYS:CB	2.66	0.43
3:I:270:ILE:HG12	3:I:289:ASN:H	1.82	0.43
1:A:147:PRO:HD2	1:A:202:PRO:CB	2.48	0.43
1:H:125:ALA:O	2:L:114:PHE:HD1	2.01	0.43
2:B:30:SER:CB	2:B:31:ASN:CA	2.96	0.43
3:C:208:VAL:HG22	3:C:209:THR:H	1.83	0.43
3:D:335:GLY:N	3:D:412:ALA:O	2.43	0.43
3:G:53:PHE:CE1	3:G:218:CYS:HB2	2.53	0.43
2:B:49:TYR:CE1	2:B:53:ASN:CB	3.01	0.43
2:B:151:GLN:HB3	2:B:154:ASN:OD1	2.17	0.43
3:D:95:MET:HE3	3:D:96:TRP:NE1	2.33	0.43
1:H:4:LEU:HD23	1:H:24:ALA:HA	2.00	0.43
2:L:132:LEU:HD12	2:L:132:LEU:N	2.34	0.43
3:C:52:LEU:HD12	3:C:103:GLN:NE2	2.34	0.43
3:D:356:LYS:HZ2	3:D:461:THR:HG21	1.84	0.43
3:C:286:VAL:HB	3:C:452:LEU:HB2	2.00	0.43
3:G:229:ASN:HB2	3:G:241:ASN:CG	2.44	0.43
3:I:105:GLN:O	3:I:109:ILE:HG13	2.19	0.43
3:I:362:SER:O	3:I:469:ARG:HD3	2.19	0.43
1:A:121:VAL:O	1:A:209:LYS:NZ	2.43	0.43

Continued on next page...

Continued from previous page...

Atom-1	Atom-2	Interatomic distance (Å)	Clash overlap (Å)
3:C:86:LEU:HB3	3:C:89:VAL:HG11	2.00	0.43
3:D:208:VAL:HG22	3:D:209:THR:N	2.33	0.43
3:I:230:GLN:HG3	3:I:231:LYS:N	2.33	0.43
3:I:248:THR:HA	3:I:486:TYR:CE2	2.54	0.43
3:I:286:VAL:HB	3:I:452:LEU:HB2	2.00	0.43
3:G:86:LEU:HB3	3:G:89:VAL:CG2	2.46	0.43
3:I:52:LEU:HB3	3:I:218:CYS:O	2.18	0.43
1:A:184:VAL:HG11	1:A:194:TYR:CZ	2.54	0.42
3:D:286:VAL:HB	3:D:452:LEU:HB2	2.01	0.42
3:I:108:VAL:O	3:I:112:TRP:CD1	2.72	0.42
3:C:331:CYS:O	3:C:415:MET:HA	2.19	0.42
3:C:86:LEU:HB2	3:C:89:VAL:HG11	2.00	0.42
3:C:385:ASN:O	3:C:416:LEU:HG	2.19	0.42
2:L:89:GLN:HB2	2:L:94:ILE:HG12	2.01	0.42
2:B:138:ARG:HB2	2:B:169:TYR:CE2	2.55	0.42
2:B:208:GLY:O	2:B:209:GLU:CB	2.65	0.42
3:D:451:GLY:O	3:D:452:LEU:HD12	2.20	0.42
3:G:96:TRP:HB3	3:G:275:LYS:HE2	2.01	0.42
1:A:52:ASN:O	1:A:55:GLY:N	2.53	0.42
3:D:120:VAL:HG12	3:D:122:LEU:HD13	2.02	0.42
3:G:120:VAL:HA	3:G:201:LEU:O	2.19	0.42
2:L:189:ALA:CB	2:L:204:SER:HB3	2.49	0.42
1:A:99:PHE:HD1	2:B:32:TYR:CD1	2.33	0.42
3:I:119:CYS:N	3:I:205:CYS:SG	2.92	0.42
1:A:54:SER:CB	3:D:370:ILE:CD1	2.98	0.42
3:C:95:MET:HE3	3:C:96:TRP:NE1	2.34	0.42
3:D:95:MET:HE2	3:D:235:GLY:HA3	2.02	0.42
2:B:4:MET:HB3	2:B:95:GLY:HA2	2.01	0.42
3:D:86:LEU:CB	3:D:89:VAL:HG11	2.49	0.42
3:I:296:CYS:HA	3:I:330:TYR:O	2.20	0.42
3:C:67:ASN:O	3:C:71:THR:HG23	2.20	0.42
3:G:270:ILE:HD13	3:G:345:VAL:HG22	2.00	0.42
2:B:29:ILE:HA	2:B:68:GLY:O	2.19	0.41
3:G:95:MET:CE	3:G:273:ARG:HD3	2.45	0.41
3:G:455:LEU:HD12	3:G:455:LEU:HA	1.89	0.41
2:L:146:VAL:HG22	2:L:188:TYR:CD1	2.54	0.41
3:D:89:VAL:O	3:D:240:ASN:O	2.38	0.41
3:G:54:CYS:HA	3:G:216:HIS:O	2.20	0.41
6:J:1:NAG:H61	6:J:2:NAG:C1	2.50	0.41
2:B:128:VAL:HG22	2:B:175:LEU:O	2.20	0.41
3:G:89:VAL:CG1	3:G:90:THR:N	2.84	0.41

Continued on next page...

Continued from previous page...

Atom-1	Atom-2	Interatomic distance (Å)	Clash overlap (Å)
3:G:333:ILE:HD11	3:G:416:LEU:HD22	2.02	0.41
3:I:276:ASN:C	3:I:276:ASN:OD1	2.62	0.41
2:L:155:SER:HA	2:L:174:THR:O	2.20	0.41
3:G:368:LEU:HA	3:G:371:THR:OG1	2.20	0.41
1:H:52:ASN:OD1	1:H:53:ASN:N	2.53	0.41
1:H:178:LEU:HD12	1:H:178:LEU:C	2.46	0.41
2:B:2:ILE:HA	2:B:27:GLN:CB	2.51	0.41
2:B:49:TYR:CD1	2:B:53:ASN:HB2	2.55	0.41
3:C:95:MET:HE1	3:C:273:ARG:HD3	2.01	0.41
3:D:340:GLU:O	3:D:344:GLN:HG2	2.21	0.41
3:G:289:ASN:ND2	8:G:601:NAG:C7	2.84	0.41
3:G:95:MET:CE	3:G:273:ARG:HB3	2.46	0.41
3:I:104:MET:CE	3:I:483:LEU:HD11	2.50	0.41
2:L:110:SER:HB2	2:L:133:ASN:HB3	2.03	0.41
3:C:123:THR:O	3:C:124:GLY:C	2.62	0.41
3:G:298:ARG:HD2	3:G:298:ARG:C	2.46	0.41
3:I:228:CYS:SG	3:I:230:GLN:HB3	2.60	0.41
3:C:298:ARG:HD2	3:C:298:ARG:C	2.46	0.41
5:F:1:NAG:H62	5:F:2:NAG:N2	2.35	0.41
2:L:136:TYR:CD1	2:L:137:PRO:HA	2.55	0.41
2:B:4:MET:HE2	2:B:4:MET:HB2	1.78	0.41
3:D:283:ILE:HG13	3:D:284:ILE:N	2.35	0.41
3:G:204:ALA:HB2	8:I:601:NAG:H81	2.03	0.41
3:G:388:GLY:O	8:G:603:NAG:C8	2.68	0.41
3:I:92:ASN:HA	3:I:238:PRO:HA	2.03	0.41
3:I:223:TYR:CD1	3:I:490:GLU:HA	2.55	0.41
1:H:119:PRO:HB3	1:H:145:TYR:HB3	2.01	0.41
1:A:47:TRP:CZ2	1:A:49:GLY:HA2	2.56	0.41
1:A:132:SER:O	1:A:135:THR:OG1	2.33	0.41
3:I:276:ASN:OD1	3:I:278:ARG:N	2.52	0.41
1:H:46:GLU:OE2	1:H:62:LYS:HD3	2.21	0.40
2:B:37:GLN:HB2	2:B:47:LEU:HD11	2.03	0.40
3:D:234:ASN:OD1	3:D:234:ASN:C	2.63	0.40
3:I:295:VAL:O	3:I:331:CYS:HA	2.21	0.40
3:I:425:ASN:OD1	3:I:432:LYS:HG2	2.21	0.40
2:L:50:ASP:O	2:L:51:ALA:HB3	2.21	0.40
2:L:128:VAL:HB	2:L:175:LEU:HB3	2.04	0.40
2:B:138:ARG:HG2	2:B:138:ARG:HH11	1.86	0.40
3:D:275:LYS:HD2	3:D:282:LYS:HE3	2.03	0.40
3:G:332:GLN:C	3:G:333:ILE:HG13	2.46	0.40
3:I:112:TRP:CZ2	3:I:255:VAL:CG2	3.05	0.40

Continued on next page...

Continued from previous page...

Atom-1	Atom-2	Interatomic distance (Å)	Clash overlap (Å)
1:H:2:VAL:HG12	1:H:102:LEU:HD22	2.02	0.40
2:L:7:SER:O	2:L:22:THR:HG22	2.21	0.40
1:A:55:GLY:C	3:D:366:GLY:HA2	2.47	0.40
1:A:138:LEU:HD12	1:A:138:LEU:C	2.47	0.40
2:B:47:LEU:C	2:B:48:ILE:HG12	2.46	0.40
3:D:277:LEU:HD23	3:D:277:LEU:HA	1.96	0.40
1:H:100(A):ASP:OD1	1:H:100(A):ASP:N	2.48	0.40
3:C:120:VAL:HG12	3:C:122:LEU:HD12	2.02	0.40
3:D:86:LEU:HB3	3:D:89:VAL:HG11	2.04	0.40
3:D:383:TYR:CE1	3:D:421:LYS:HD3	2.57	0.40
3:I:95:MET:CE	3:I:234:ASN:O	2.70	0.40

There are no symmetry-related clashes.

5.3 Torsion angles [i](#)

5.3.1 Protein backbone [i](#)

In the following table, the Percentiles column shows the percent Ramachandran outliers of the chain as a percentile score with respect to all X-ray entries followed by that with respect to entries of similar resolution.

The Analysed column shows the number of residues for which the backbone conformation was analysed, and the total number of residues.

Mol	Chain	Analysed	Favoured	Allowed	Outliers	Percentiles	
1	A	210/230 (91%)	202 (96%)	8 (4%)	0	100	100
1	H	211/230 (92%)	204 (97%)	6 (3%)	1 (0%)	24	57
2	B	207/210 (99%)	199 (96%)	8 (4%)	0	100	100
2	L	198/210 (94%)	192 (97%)	6 (3%)	0	100	100
3	C	334/353 (95%)	325 (97%)	9 (3%)	0	100	100
3	D	333/353 (94%)	324 (97%)	9 (3%)	0	100	100
3	G	334/353 (95%)	325 (97%)	9 (3%)	0	100	100
3	I	323/353 (92%)	313 (97%)	9 (3%)	1 (0%)	36	66
All	All	2150/2292 (94%)	2084 (97%)	64 (3%)	2 (0%)	48	77

All (2) Ramachandran outliers are listed below:

Mol	Chain	Res	Type
1	H	126	PRO
3	I	238	PRO

5.3.2 Protein sidechains [i](#)

In the following table, the Percentiles column shows the percent sidechain outliers of the chain as a percentile score with respect to all X-ray entries followed by that with respect to entries of similar resolution.

The Analysed column shows the number of residues for which the sidechain conformation was analysed, and the total number of residues.

Mol	Chain	Analysed	Rotameric	Outliers	Percentiles
1	A	173/196 (88%)	167 (96%)	6 (4%)	32 61
1	H	175/196 (89%)	170 (97%)	5 (3%)	37 64
2	B	167/186 (90%)	159 (95%)	8 (5%)	23 53
2	L	159/186 (86%)	153 (96%)	6 (4%)	29 59
3	C	270/311 (87%)	262 (97%)	8 (3%)	36 63
3	D	261/311 (84%)	258 (99%)	3 (1%)	65 77
3	G	264/311 (85%)	261 (99%)	3 (1%)	65 77
3	I	244/311 (78%)	238 (98%)	6 (2%)	42 66
All	All	1713/2008 (85%)	1668 (97%)	45 (3%)	40 66

All (45) residues with a non-rotameric sidechain are listed below:

Mol	Chain	Res	Type
1	H	23	LYS
1	H	61	GLN
1	H	80	SER
1	H	83	ARG
1	H	117	LYS
2	L	33	LEU
2	L	89	GLN
2	L	92	GLU
2	L	104	ARG
2	L	151	GLN
2	L	154	ASN
1	A	2	VAL
1	A	3	GLN
1	A	34	MET

Continued on next page...

Continued from previous page...

Mol	Chain	Res	Type
1	A	61	GLN
1	A	117	LYS
1	A	204	ASN
2	B	18	ARG
2	B	48	ILE
2	B	92	GLU
2	B	104	ARG
2	B	155	SER
2	B	177	LEU
2	B	202	THR
2	B	203	LYS
3	C	59	LYS
3	C	122	LEU
3	C	230	GLN
3	C	267	GLU
3	C	349	LEU
3	C	357	GLN
3	C	415	MET
3	C	464	ASN
3	D	115	CYS
3	D	122	LEU
3	D	452	LEU
3	G	122	LEU
3	G	205	CYS
3	G	476	ARG
3	I	74	CYS
3	I	114	GLN
3	I	122	LEU
3	I	218	CYS
3	I	225	ILE
3	I	249	HIS

Sometimes sidechains can be flipped to improve hydrogen bonding and reduce clashes. All (14) such sidechains are listed below:

Mol	Chain	Res	Type
2	L	79	GLN
2	L	133	ASN
2	L	134	ASN
2	L	154	ASN
1	A	164	HIS
1	A	192	GLN
2	B	6	GLN

Continued on next page...

Continued from previous page...

Mol	Chain	Res	Type
2	B	79	GLN
3	C	300	ASN
3	D	92	ASN
3	D	344	GLN
3	D	352	HIS
3	I	328	GLN
3	I	352	HIS

5.3.3 RNA [i](#)

There are no RNA molecules in this entry.

5.4 Non-standard residues in protein, DNA, RNA chains [i](#)

There are no non-standard protein/DNA/RNA residues in this entry.

5.5 Carbohydrates [i](#)

19 monosaccharides are modelled in this entry.

In the following table, the Counts columns list the number of bonds (or angles) for which Mogul statistics could be retrieved, the number of bonds (or angles) that are observed in the model and the number of bonds (or angles) that are defined in the Chemical Component Dictionary. The Link column lists molecule types, if any, to which the group is linked. The Z score for a bond length (or angle) is the number of standard deviations the observed value is removed from the expected value. A bond length (or angle) with $|Z| > 2$ is considered an outlier worth inspection. RMSZ is the root-mean-square of all Z scores of the bond lengths (or angles).

Mol	Type	Chain	Res	Link	Bond lengths			Bond angles		
					Counts	RMSZ	# Z > 2	Counts	RMSZ	# Z > 2
4	NAG	E	1	3,4	14,14,15	1.28	1 (7%)	17,19,21	1.80	4 (23%)
4	NAG	E	2	4	14,14,15	1.21	1 (7%)	17,19,21	1.09	1 (5%)
4	BMA	E	3	4	11,11,12	1.52	3 (27%)	15,15,17	0.97	1 (6%)
4	MAN	E	4	4	11,11,12	1.61	2 (18%)	15,15,17	1.40	3 (20%)
4	MAN	E	5	4	11,11,12	1.84	4 (36%)	15,15,17	1.71	3 (20%)
5	NAG	F	1	3,5	14,14,15	0.61	0	17,19,21	2.00	2 (11%)
5	NAG	F	2	5	14,14,15	1.60	2 (14%)	17,19,21	1.81	3 (17%)
5	BMA	F	3	5	11,11,12	2.27	4 (36%)	15,15,17	1.83	6 (40%)
5	MAN	F	4	5	11,11,12	4.00	6 (54%)	15,15,17	1.69	4 (26%)

Mol	Type	Chain	Res	Link	Bond lengths			Bond angles		
					Counts	RMSZ	# Z > 2	Counts	RMSZ	# Z > 2
6	NAG	J	1	6,3	14,14,15	0.85	1 (7%)	17,19,21	1.25	3 (17%)
6	NAG	J	2	6	14,14,15	1.23	1 (7%)	17,19,21	1.34	3 (17%)
6	BMA	J	3	6	11,11,12	1.53	2 (18%)	15,15,17	1.78	6 (40%)
6	MAN	J	4	6	11,11,12	2.26	5 (45%)	15,15,17	1.26	1 (6%)
6	MAN	J	5	6	11,11,12	3.38	7 (63%)	15,15,17	2.91	9 (60%)
6	MAN	J	6	6	11,11,12	1.87	5 (45%)	15,15,17	1.47	2 (13%)
6	MAN	J	7	6	11,11,12	2.61	5 (45%)	15,15,17	1.68	5 (33%)
6	MAN	J	8	6	11,11,12	2.60	5 (45%)	15,15,17	1.60	3 (20%)
7	NAG	K	1	7,3	14,14,15	0.37	0	17,19,21	1.57	1 (5%)
7	NAG	K	2	7	14,14,15	1.16	1 (7%)	17,19,21	1.00	1 (5%)

In the following table, the Chirals column lists the number of chiral outliers, the number of chiral centers analysed, the number of these observed in the model and the number defined in the Chemical Component Dictionary. Similar counts are reported in the Torsion and Rings columns. '-' means no outliers of that kind were identified.

Mol	Type	Chain	Res	Link	Chirals	Torsions	Rings
4	NAG	E	1	3,4	-	2/6/23/26	0/1/1/1
4	NAG	E	2	4	-	0/6/23/26	0/1/1/1
4	BMA	E	3	4	-	0/2/19/22	0/1/1/1
4	MAN	E	4	4	-	0/2/19/22	0/1/1/1
4	MAN	E	5	4	-	2/2/19/22	0/1/1/1
5	NAG	F	1	3,5	-	1/6/23/26	0/1/1/1
5	NAG	F	2	5	-	0/6/23/26	0/1/1/1
5	BMA	F	3	5	-	0/2/19/22	0/1/1/1
5	MAN	F	4	5	-	1/2/19/22	0/1/1/1
6	NAG	J	1	6,3	-	2/6/23/26	0/1/1/1
6	NAG	J	2	6	-	0/6/23/26	0/1/1/1
6	BMA	J	3	6	-	0/2/19/22	0/1/1/1
6	MAN	J	4	6	-	0/2/19/22	0/1/1/1
6	MAN	J	5	6	-	0/2/19/22	0/1/1/1
6	MAN	J	6	6	-	0/2/19/22	0/1/1/1
6	MAN	J	7	6	-	2/2/19/22	0/1/1/1
6	MAN	J	8	6	-	2/2/19/22	0/1/1/1
7	NAG	K	1	7,3	-	1/6/23/26	0/1/1/1
7	NAG	K	2	7	-	2/6/23/26	0/1/1/1

All (55) bond length outliers are listed below:

Mol	Chain	Res	Type	Atoms	Z	Observed(Å)	Ideal(Å)
5	F	4	MAN	C2-C3	7.51	1.64	1.52
5	F	4	MAN	O5-C5	7.30	1.57	1.43
6	J	5	MAN	C4-C5	6.69	1.67	1.53
6	J	8	MAN	C2-C3	5.07	1.60	1.52
6	J	5	MAN	O3-C3	5.06	1.55	1.43
6	J	4	MAN	C2-C3	4.87	1.59	1.52
6	J	7	MAN	O5-C1	4.68	1.51	1.43
5	F	3	BMA	O5-C5	4.66	1.52	1.43
5	F	3	BMA	O5-C1	4.55	1.51	1.43
5	F	4	MAN	C4-C5	4.49	1.62	1.53
5	F	2	NAG	C1-C2	4.43	1.58	1.52
5	F	4	MAN	O2-C2	4.42	1.52	1.43
6	J	2	NAG	O5-C1	-4.38	1.36	1.43
4	E	2	NAG	O5-C1	-4.08	1.36	1.43
4	E	1	NAG	C1-C2	-3.95	1.47	1.52
6	J	7	MAN	C1-C2	3.90	1.61	1.52
5	F	4	MAN	C1-C2	3.64	1.60	1.52
6	J	7	MAN	O5-C5	3.62	1.50	1.43
7	K	2	NAG	O5-C1	-3.56	1.37	1.43
6	J	5	MAN	C1-C2	3.53	1.60	1.52
6	J	5	MAN	O4-C4	3.46	1.51	1.43
6	J	7	MAN	C2-C3	3.44	1.57	1.52
6	J	8	MAN	C1-C2	3.40	1.60	1.52
4	E	4	MAN	C1-C2	3.36	1.60	1.52
4	E	3	BMA	C4-C5	3.36	1.60	1.53
6	J	8	MAN	O5-C5	3.34	1.49	1.43
5	F	2	NAG	O5-C1	3.27	1.49	1.43
4	E	5	MAN	O5-C5	3.27	1.49	1.43
5	F	4	MAN	C6-C5	3.18	1.62	1.51
6	J	8	MAN	C4-C5	3.13	1.59	1.53
6	J	8	MAN	O5-C1	3.07	1.48	1.43
6	J	5	MAN	O5-C5	3.06	1.49	1.43
6	J	6	MAN	C2-C3	3.02	1.57	1.52
4	E	5	MAN	C4-C5	2.94	1.59	1.53
6	J	5	MAN	C2-C3	2.89	1.56	1.52
6	J	4	MAN	C4-C5	2.85	1.59	1.53
6	J	3	BMA	C4-C5	-2.81	1.47	1.53
6	J	5	MAN	C4-C3	2.80	1.59	1.52
6	J	6	MAN	O2-C2	2.72	1.49	1.43
6	J	6	MAN	O3-C3	2.72	1.49	1.43
4	E	4	MAN	O3-C3	2.50	1.49	1.43
4	E	5	MAN	C1-C2	2.48	1.58	1.52
6	J	4	MAN	C4-C3	2.48	1.58	1.52

Continued on next page...

Continued from previous page...

Mol	Chain	Res	Type	Atoms	Z	Observed(Å)	Ideal(Å)
6	J	1	NAG	O7-C7	2.47	1.28	1.23
6	J	4	MAN	O2-C2	-2.45	1.38	1.43
4	E	3	BMA	C6-C5	2.30	1.59	1.51
6	J	6	MAN	C1-C2	2.30	1.57	1.52
5	F	3	BMA	C6-C5	2.17	1.59	1.51
6	J	4	MAN	O5-C5	2.15	1.47	1.43
4	E	3	BMA	O5-C5	2.14	1.47	1.43
5	F	3	BMA	O2-C2	2.13	1.47	1.43
6	J	7	MAN	C4-C3	2.13	1.57	1.52
6	J	6	MAN	O5-C5	2.12	1.47	1.43
4	E	5	MAN	C4-C3	2.11	1.57	1.52
6	J	3	BMA	C2-C3	2.06	1.55	1.52

All (61) bond angle outliers are listed below:

Mol	Chain	Res	Type	Atoms	Z	Observed(°)	Ideal(°)
5	F	1	NAG	C1-O5-C5	6.88	121.40	112.19
6	J	5	MAN	C2-C3-C4	-5.80	100.67	110.86
7	K	1	NAG	C1-O5-C5	5.55	119.63	112.19
5	F	2	NAG	C1-O5-C5	-4.95	105.56	112.19
4	E	1	NAG	C2-N2-C7	-4.69	116.62	122.90
6	J	5	MAN	C1-C2-C3	4.13	115.66	109.64
6	J	8	MAN	C1-O5-C5	4.09	117.67	112.19
6	J	5	MAN	O3-C3-C4	3.82	119.38	110.38
5	F	4	MAN	O5-C5-C6	3.79	115.05	107.66
6	J	5	MAN	O4-C4-C5	3.64	118.29	109.32
4	E	5	MAN	O5-C1-C2	3.58	119.34	110.79
4	E	1	NAG	C1-C2-N2	3.58	116.07	110.43
5	F	2	NAG	C2-N2-C7	3.31	127.33	122.90
6	J	5	MAN	O4-C4-C3	3.23	117.99	110.38
6	J	5	MAN	O3-C3-C2	3.21	116.60	110.05
5	F	4	MAN	O3-C3-C2	3.21	116.59	110.05
4	E	4	MAN	O2-C2-C3	-3.11	103.71	110.15
6	J	2	NAG	O3-C3-C4	-3.10	103.07	110.38
6	J	3	BMA	O5-C5-C4	-3.08	103.33	110.83
6	J	1	NAG	C2-N2-C7	-3.03	118.84	122.90
4	E	5	MAN	O2-C2-C1	3.03	116.16	109.22
6	J	5	MAN	O2-C2-C3	-3.00	103.93	110.15
6	J	4	MAN	O2-C2-C3	-2.97	104.01	110.15
6	J	6	MAN	O3-C3-C2	2.95	116.08	110.05
6	J	7	MAN	O3-C3-C2	2.95	116.08	110.05
4	E	2	NAG	C3-C4-C5	2.95	115.58	110.23

Continued on next page...

Continued from previous page...

Mol	Chain	Res	Type	Atoms	Z	Observed(°)	Ideal(°)
5	F	3	BMA	O5-C5-C6	2.95	113.40	107.66
6	J	7	MAN	C1-O5-C5	2.90	116.07	112.19
5	F	1	NAG	C2-N2-C7	-2.88	119.05	122.90
6	J	5	MAN	O5-C1-C2	2.82	117.52	110.79
6	J	3	BMA	C1-O5-C5	-2.82	108.41	112.19
5	F	3	BMA	O2-C2-C3	2.74	115.84	110.15
6	J	3	BMA	O4-C4-C3	2.71	116.76	110.38
6	J	6	MAN	C2-C3-C4	-2.70	106.11	110.86
5	F	3	BMA	C1-C2-C3	-2.68	105.74	109.64
6	J	8	MAN	O3-C3-C2	2.62	115.40	110.05
6	J	5	MAN	C3-C4-C5	-2.51	105.69	110.23
6	J	2	NAG	O4-C4-C5	2.48	115.42	109.32
6	J	3	BMA	O6-C6-C5	-2.43	103.05	111.33
6	J	1	NAG	C1-C2-N2	2.41	114.24	110.43
5	F	3	BMA	C1-O5-C5	2.40	115.40	112.19
5	F	4	MAN	O2-C2-C1	2.39	114.69	109.22
4	E	5	MAN	C1-O5-C5	2.35	115.33	112.19
6	J	2	NAG	O5-C5-C6	-2.32	103.16	107.66
4	E	1	NAG	C1-O5-C5	-2.31	109.09	112.19
6	J	3	BMA	C6-C5-C4	-2.29	107.40	113.02
4	E	1	NAG	O4-C4-C5	-2.25	103.78	109.32
7	K	2	NAG	O5-C5-C4	-2.18	105.52	110.83
4	E	4	MAN	O5-C1-C2	2.18	115.99	110.79
6	J	7	MAN	O3-C3-C4	2.17	115.50	110.38
6	J	1	NAG	O3-C3-C4	-2.13	105.35	110.38
5	F	3	BMA	C3-C4-C5	2.13	114.09	110.23
6	J	7	MAN	C2-C3-C4	-2.10	107.17	110.86
6	J	3	BMA	C1-C2-C3	-2.09	106.61	109.64
6	J	8	MAN	C2-C3-C4	2.08	114.52	110.86
6	J	7	MAN	C3-C4-C5	-2.06	106.50	110.23
4	E	4	MAN	C2-C3-C4	-2.05	107.26	110.86
5	F	4	MAN	O2-C2-C3	2.04	114.38	110.15
5	F	3	BMA	C2-C3-C4	2.04	114.44	110.86
4	E	3	BMA	C2-C3-C4	2.02	114.41	110.86
5	F	2	NAG	C4-C3-C2	2.01	113.97	111.02

There are no chirality outliers.

All (15) torsion outliers are listed below:

Mol	Chain	Res	Type	Atoms
6	J	1	NAG	O5-C5-C6-O6
6	J	1	NAG	C4-C5-C6-O6

Continued on next page...

Continued from previous page...

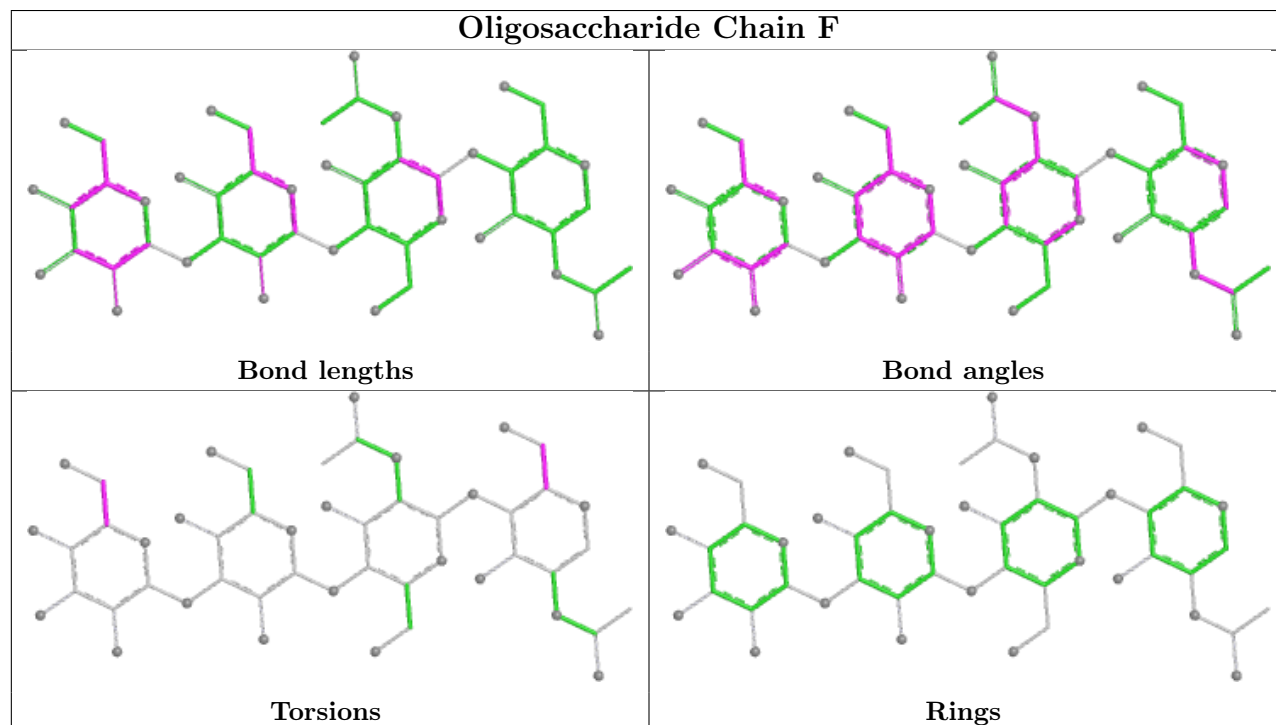
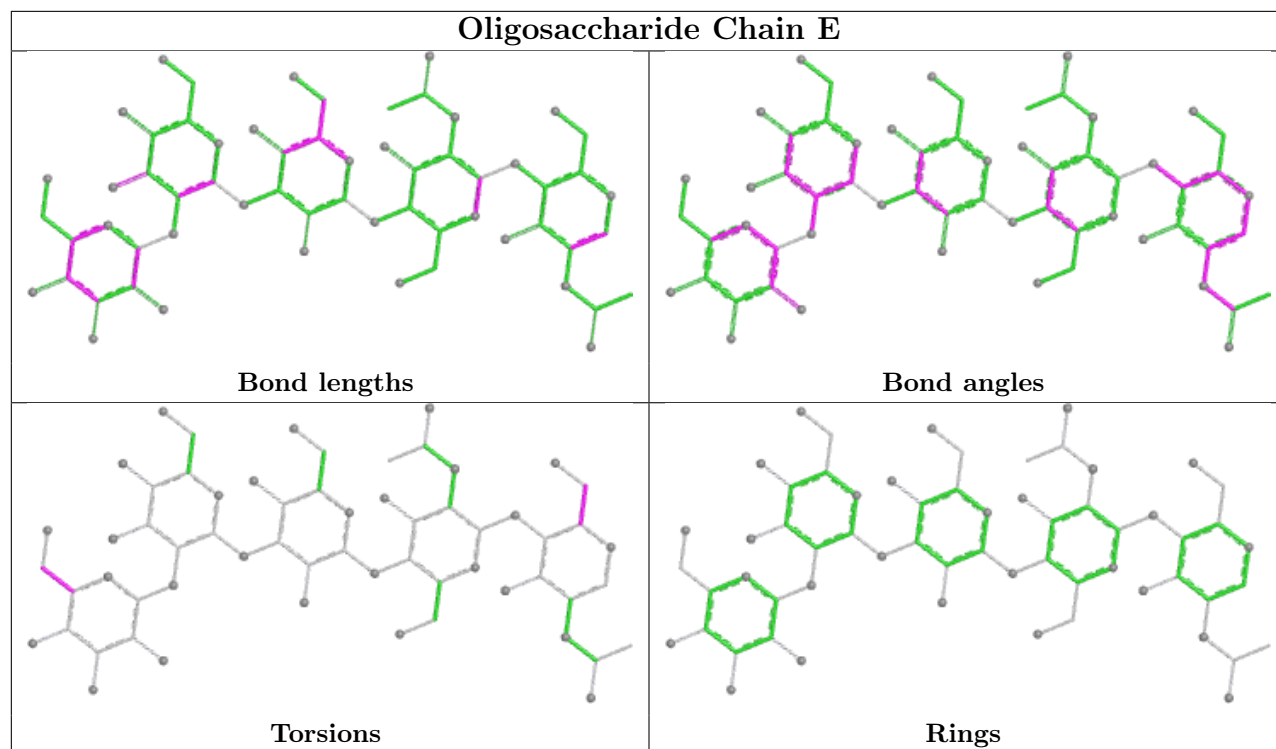
Mol	Chain	Res	Type	Atoms
6	J	8	MAN	C4-C5-C6-O6
6	J	8	MAN	O5-C5-C6-O6
7	K	2	NAG	O5-C5-C6-O6
7	K	2	NAG	C4-C5-C6-O6
4	E	1	NAG	C4-C5-C6-O6
6	J	7	MAN	C4-C5-C6-O6
4	E	1	NAG	O5-C5-C6-O6
4	E	5	MAN	C4-C5-C6-O6
6	J	7	MAN	O5-C5-C6-O6
5	F	1	NAG	O5-C5-C6-O6
7	K	1	NAG	O5-C5-C6-O6
4	E	5	MAN	O5-C5-C6-O6
5	F	4	MAN	O5-C5-C6-O6

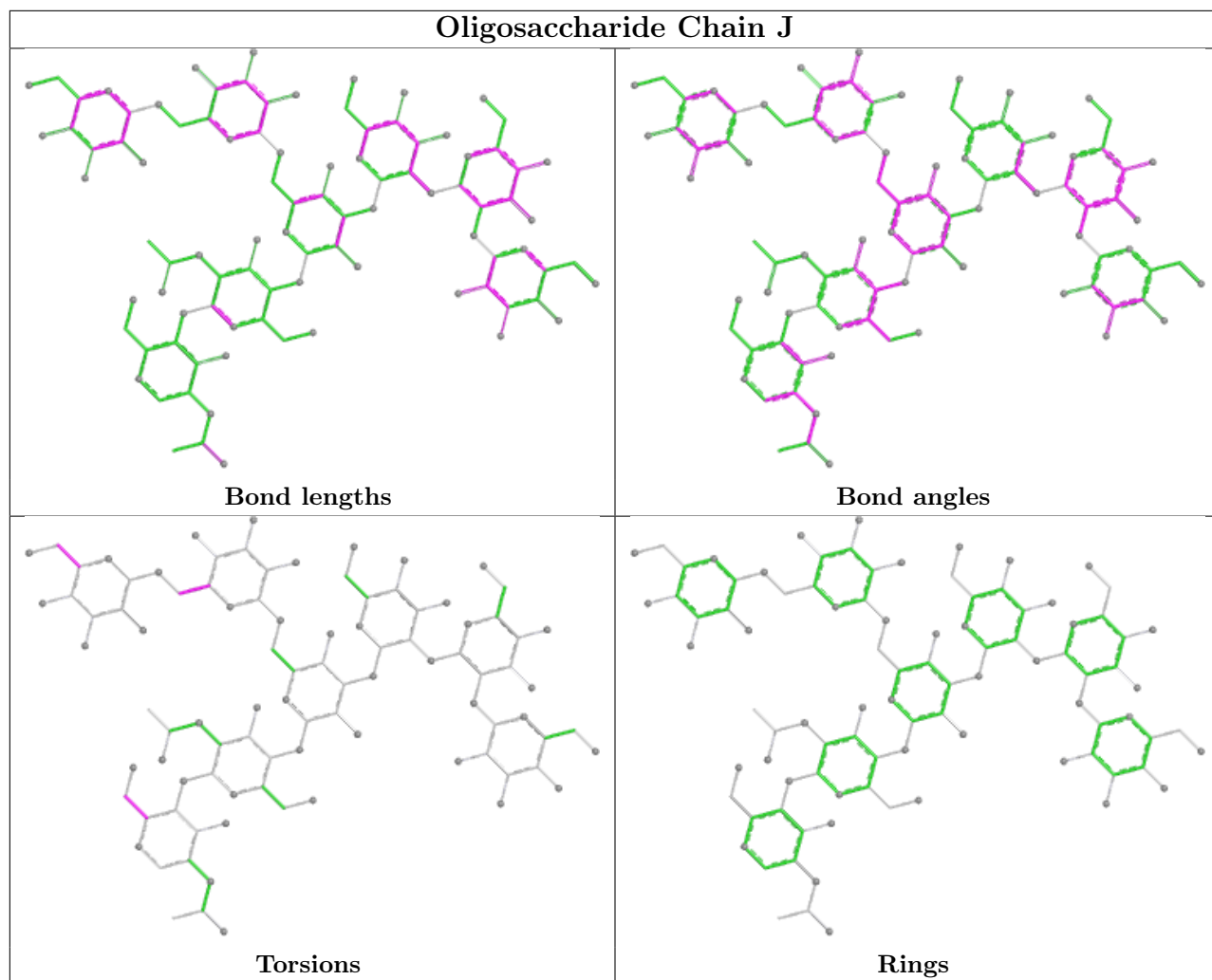
There are no ring outliers.

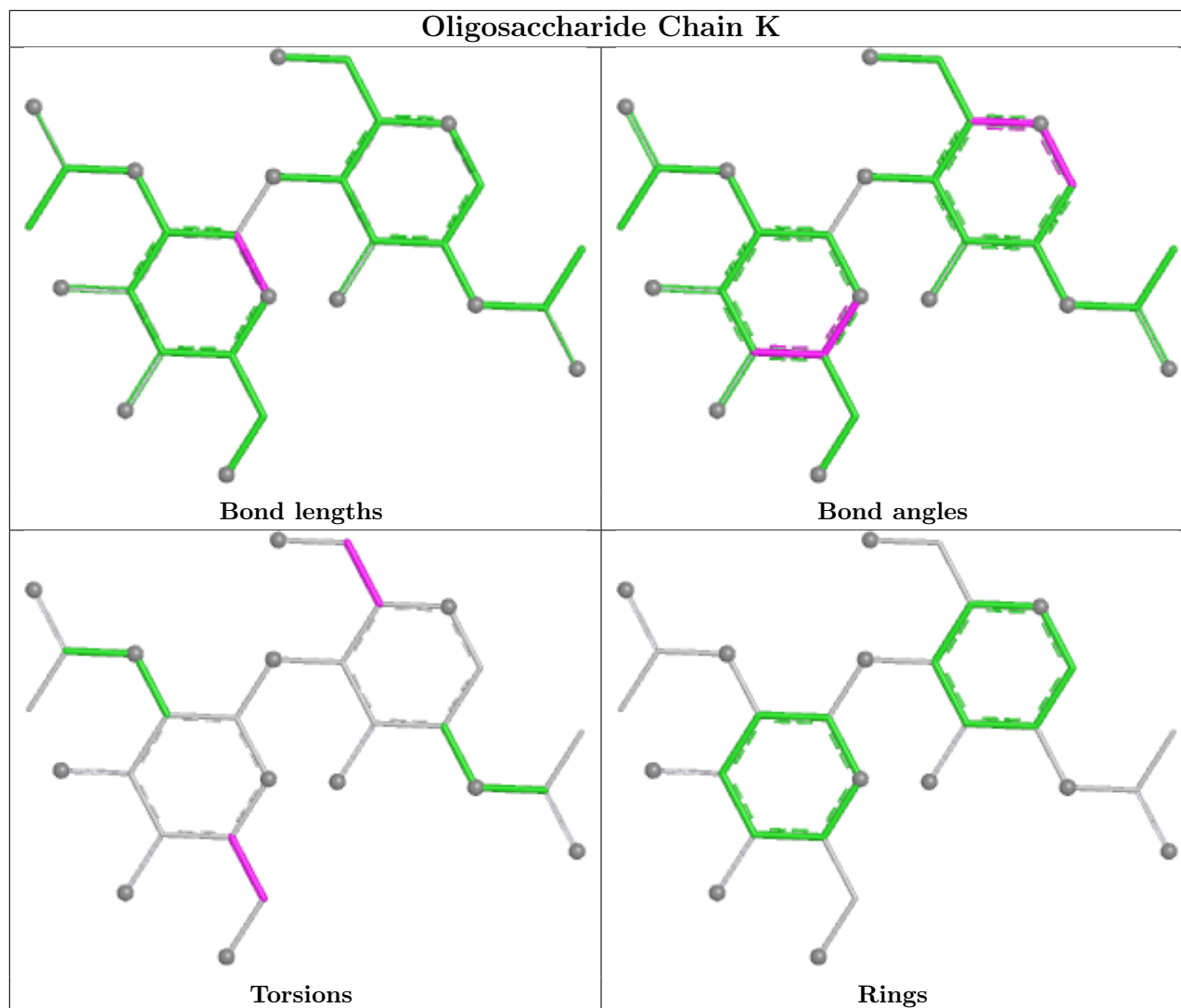
12 monomers are involved in 14 short contacts:

Mol	Chain	Res	Type	Clashes	Symm-Clashes
5	F	1	NAG	1	0
5	F	2	NAG	2	0
4	E	1	NAG	2	0
7	K	1	NAG	4	0
4	E	4	MAN	1	0
4	E	3	BMA	1	0
7	K	2	NAG	2	0
5	F	4	MAN	3	0
6	J	1	NAG	1	0
5	F	3	BMA	1	0
4	E	2	NAG	2	0
6	J	2	NAG	1	0

The following is a two-dimensional graphical depiction of Mogul quality analysis of bond lengths, bond angles, torsion angles, and ring geometry for oligosaccharide.







5.6 Ligand geometry [i](#)

15 ligands are modelled in this entry.

In the following table, the Counts columns list the number of bonds (or angles) for which Mogul statistics could be retrieved, the number of bonds (or angles) that are observed in the model and the number of bonds (or angles) that are defined in the Chemical Component Dictionary. The Link column lists molecule types, if any, to which the group is linked. The Z score for a bond length (or angle) is the number of standard deviations the observed value is removed from the expected value. A bond length (or angle) with $|Z| > 2$ is considered an outlier worth inspection. RMSZ is the root-mean-square of all Z scores of the bond lengths (or angles).

Mol	Type	Chain	Res	Link	Bond lengths			Bond angles		
					Counts	RMSZ	# Z > 2	Counts	RMSZ	# Z > 2
8	NAG	D	601	3	14,14,15	1.74	2 (14%)	17,19,21	0.76	0
8	NAG	G	602	3	14,14,15	1.30	1 (7%)	17,19,21	0.97	1 (5%)
8	NAG	I	602	3	14,14,15	0.37	0	17,19,21	0.50	0

Mol	Type	Chain	Res	Link	Bond lengths			Bond angles		
					Counts	RMSZ	# Z > 2	Counts	RMSZ	# Z > 2
8	NAG	I	603	3	14,14,15	1.11	2 (14%)	17,19,21	0.74	0
8	NAG	D	604	3	14,14,15	0.60	0	17,19,21	0.89	1 (5%)
8	NAG	G	603	3	14,14,15	0.89	1 (7%)	17,19,21	1.38	2 (11%)
8	NAG	D	603	3	14,14,15	1.06	1 (7%)	17,19,21	0.81	1 (5%)
8	NAG	G	601	3	14,14,15	0.96	1 (7%)	17,19,21	0.71	0
8	NAG	I	601	3	14,14,15	0.87	1 (7%)	17,19,21	1.36	4 (23%)
8	NAG	C	601	3	14,14,15	0.91	1 (7%)	17,19,21	0.80	0
8	NAG	G	604	3	14,14,15	0.21	0	17,19,21	1.15	1 (5%)
8	NAG	C	604	3	14,14,15	0.60	0	17,19,21	0.83	1 (5%)
8	NAG	D	602	3	14,14,15	0.82	2 (14%)	17,19,21	0.77	0
8	NAG	C	602	3	14,14,15	0.27	0	17,19,21	0.80	0
8	NAG	C	603	3	14,14,15	0.65	0	17,19,21	0.82	0

In the following table, the Chirals column lists the number of chiral outliers, the number of chiral centers analysed, the number of these observed in the model and the number defined in the Chemical Component Dictionary. Similar counts are reported in the Torsion and Rings columns. '-' means no outliers of that kind were identified.

Mol	Type	Chain	Res	Link	Chirals	Torsions	Rings
8	NAG	D	601	3	-	3/6/23/26	0/1/1/1
8	NAG	G	602	3	-	3/6/23/26	0/1/1/1
8	NAG	I	602	3	-	2/6/23/26	0/1/1/1
8	NAG	I	603	3	-	2/6/23/26	0/1/1/1
8	NAG	D	604	3	-	1/6/23/26	0/1/1/1
8	NAG	G	603	3	-	1/6/23/26	0/1/1/1
8	NAG	D	603	3	-	0/6/23/26	0/1/1/1
8	NAG	G	601	3	-	2/6/23/26	0/1/1/1
8	NAG	I	601	3	-	4/6/23/26	0/1/1/1
8	NAG	C	601	3	-	3/6/23/26	0/1/1/1
8	NAG	G	604	3	-	0/6/23/26	0/1/1/1
8	NAG	C	604	3	-	2/6/23/26	0/1/1/1
8	NAG	D	602	3	-	0/6/23/26	0/1/1/1
8	NAG	C	602	3	-	0/6/23/26	0/1/1/1
8	NAG	C	603	3	-	1/6/23/26	0/1/1/1

All (12) bond length outliers are listed below:

Mol	Chain	Res	Type	Atoms	Z	Observed(Å)	Ideal(Å)
8	D	601	NAG	O5-C1	-4.80	1.35	1.43
8	G	602	NAG	O5-C1	-4.46	1.36	1.43
8	D	601	NAG	C1-C2	-4.22	1.46	1.52
8	D	603	NAG	O5-C1	-3.68	1.37	1.43
8	G	601	NAG	O5-C1	3.39	1.49	1.43
8	C	601	NAG	O5-C1	-2.86	1.38	1.43
8	G	603	NAG	O5-C1	2.70	1.48	1.43
8	I	603	NAG	C1-C2	2.66	1.56	1.52
8	I	601	NAG	O5-C1	-2.65	1.39	1.43
8	I	603	NAG	O5-C1	2.60	1.48	1.43
8	D	602	NAG	C1-C2	2.19	1.55	1.52
8	D	602	NAG	O5-C1	-2.08	1.40	1.43

All (11) bond angle outliers are listed below:

Mol	Chain	Res	Type	Atoms	Z	Observed(°)	Ideal(°)
8	G	603	NAG	C1-O5-C5	4.52	118.24	112.19
8	G	604	NAG	C1-O5-C5	4.22	117.84	112.19
8	I	601	NAG	O3-C3-C2	2.57	114.73	109.40
8	I	601	NAG	O4-C4-C3	-2.32	104.90	110.38
8	D	604	NAG	O3-C3-C2	2.28	114.14	109.40
8	I	601	NAG	O4-C4-C5	2.26	114.89	109.32
8	G	602	NAG	C1-O5-C5	-2.20	109.24	112.19
8	D	603	NAG	O3-C3-C2	2.14	113.85	109.40
8	C	604	NAG	C1-C2-N2	2.07	113.69	110.43
8	G	603	NAG	C1-C2-N2	2.03	113.64	110.43
8	I	601	NAG	O5-C5-C6	-2.01	103.76	107.66

There are no chirality outliers.

All (24) torsion outliers are listed below:

Mol	Chain	Res	Type	Atoms
8	C	601	NAG	C3-C2-N2-C7
8	G	602	NAG	C3-C2-N2-C7
8	C	601	NAG	O5-C5-C6-O6
8	G	602	NAG	O5-C5-C6-O6
8	I	601	NAG	O5-C5-C6-O6
8	I	601	NAG	C4-C5-C6-O6
8	C	601	NAG	C4-C5-C6-O6
8	G	602	NAG	C4-C5-C6-O6
8	I	602	NAG	O5-C5-C6-O6
8	I	603	NAG	O5-C5-C6-O6

Continued on next page...

Continued from previous page...

Mol	Chain	Res	Type	Atoms
8	C	604	NAG	O5-C5-C6-O6
8	G	601	NAG	C4-C5-C6-O6
8	I	602	NAG	C4-C5-C6-O6
8	I	603	NAG	C4-C5-C6-O6
8	G	601	NAG	O5-C5-C6-O6
8	D	601	NAG	C3-C2-N2-C7
8	D	601	NAG	C4-C5-C6-O6
8	G	603	NAG	O5-C5-C6-O6
8	D	601	NAG	O5-C5-C6-O6
8	C	603	NAG	C4-C5-C6-O6
8	I	601	NAG	C1-C2-N2-C7
8	C	604	NAG	C4-C5-C6-O6
8	I	601	NAG	C3-C2-N2-C7
8	D	604	NAG	C1-C2-N2-C7

There are no ring outliers.

5 monomers are involved in 12 short contacts:

Mol	Chain	Res	Type	Clashes	Symm-Clashes
8	D	601	NAG	2	0
8	I	602	NAG	1	0
8	G	603	NAG	4	0
8	G	601	NAG	3	0
8	I	601	NAG	2	0

5.7 Other polymers [i](#)

There are no such residues in this entry.

5.8 Polymer linkage issues [i](#)

There are no chain breaks in this entry.

6 Fit of model and data

6.1 Protein, DNA and RNA chains

In the following table, the column labelled '#RSRZ > 2' contains the number (and percentage) of RSRZ outliers, followed by percent RSRZ outliers for the chain as percentile scores relative to all X-ray entries and entries of similar resolution. The OWAB column contains the minimum, median, 95th percentile and maximum values of the occupancy-weighted average B-factor per residue. The column labelled 'Q < 0.9' lists the number of (and percentage) of residues with an average occupancy less than 0.9.

Mol	Chain	Analysed	<RSRZ>	#RSRZ>2	OWAB(Å ²)	Q<0.9
1	A	214/230 (93%)	-0.44	0 100 100	30, 54, 79, 151	0
1	H	215/230 (93%)	-0.41	0 100 100	27, 50, 90, 134	0
2	B	209/210 (99%)	-0.28	3 (1%) 73 53	35, 59, 95, 155	0
2	L	202/210 (96%)	-0.24	2 (0%) 79 62	39, 68, 99, 122	0
3	C	338/353 (95%)	-0.25	2 (0%) 85 72	31, 60, 99, 162	0
3	D	337/353 (95%)	-0.25	2 (0%) 85 72	34, 61, 100, 136	0
3	G	338/353 (95%)	-0.15	5 (1%) 72 51	32, 62, 105, 182	0
3	I	329/353 (93%)	0.10	3 (0%) 81 64	43, 82, 133, 180	0
All	All	2182/2292 (95%)	-0.22	17 (0%) 82 67	27, 62, 109, 182	0

All (17) RSRZ outliers are listed below:

Mol	Chain	Res	Type	RSRZ
2	B	31	ASN	3.7
2	L	29	ILE	3.0
3	G	45	TRP	2.9
2	B	30	SER	2.7
2	L	31	ASN	2.6
3	C	86	LEU	2.5
3	G	355	HIS	2.5
3	I	301	ASN	2.5
3	I	368	LEU	2.4
3	C	301	ASN	2.4
3	D	395	SER	2.4
3	I	378	GLY	2.3
3	G	87	GLU	2.3
3	G	51	THR	2.3
3	D	44	VAL	2.2
2	B	26	SER	2.2

Continued on next page...

Continued from previous page...

Mol	Chain	Res	Type	RSRZ
3	G	88	ASN	2.1

6.2 Non-standard residues in protein, DNA, RNA chains [i](#)

There are no non-standard protein/DNA/RNA residues in this entry.

6.3 Carbohydrates [i](#)

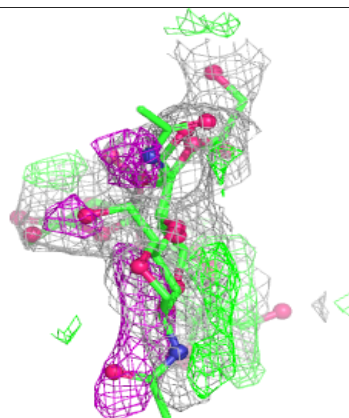
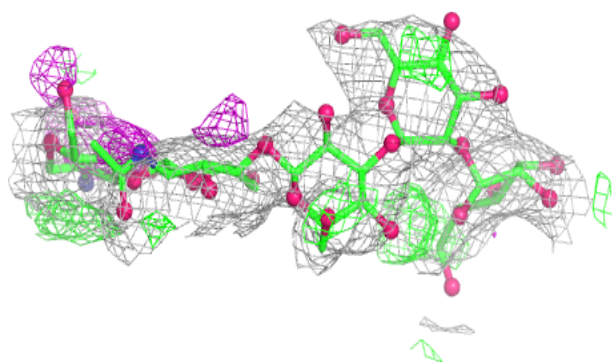
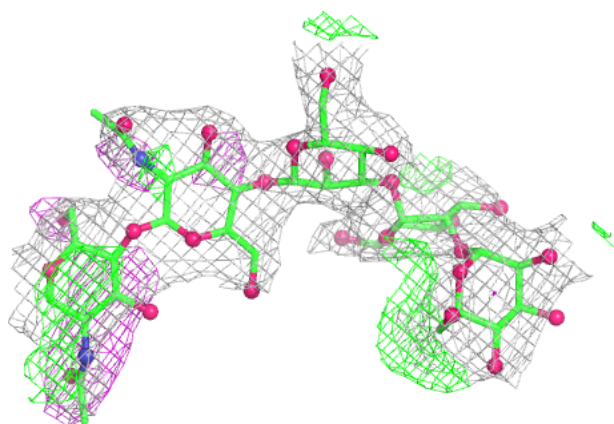
In the following table, the Atoms column lists the number of modelled atoms in the group and the number defined in the chemical component dictionary. The B-factors column lists the minimum, median, 95th percentile and maximum values of B factors of atoms in the group. The column labelled 'Q< 0.9' lists the number of atoms with occupancy less than 0.9.

Mol	Type	Chain	Res	Atoms	RSCC	RSR	B-factors(Å ²)	Q<0.9
4	NAG	E	1	14/15	-	-	54,61,65,72	0
4	NAG	E	2	14/15	-	-	55,60,73,77	0
4	BMA	E	3	11/12	-	-	67,69,75,79	11
4	MAN	E	4	11/12	-	-	66,71,78,79	11
4	MAN	E	5	11/12	-	-	61,71,80,80	11
5	NAG	F	1	14/15	-	-	51,55,66,67	0
5	NAG	F	2	14/15	-	-	63,76,89,93	0
5	BMA	F	3	11/12	-	-	75,85,90,99	11
5	MAN	F	4	11/12	-	-	78,90,105,107	0
6	MAN	J	4	11/12	0.45	0.17	68,72,81,81	0
6	BMA	J	3	11/12	0.66	0.11	63,74,83,87	0
6	NAG	J	2	14/15	0.66	0.16	56,64,70,75	0
7	NAG	K	2	14/15	0.86	0.10	96,107,125,125	0
6	MAN	J	5	11/12	-	-	63,73,80,82	0
6	MAN	J	6	11/12	-	-	72,82,88,88	11
6	MAN	J	7	11/12	-	-	71,89,97,101	0
6	MAN	J	8	11/12	-	-	79,91,97,97	0
7	NAG	K	1	14/15	0.87	0.11	78,91,102,105	0
6	NAG	J	1	14/15	0.92	0.10	48,56,68,76	0

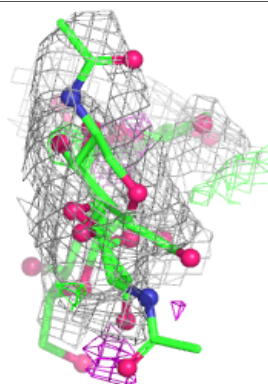
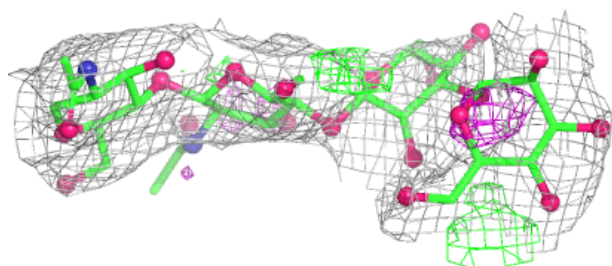
The following is a graphical depiction of the model fit to experimental electron density for oligosaccharide. Each fit is shown from different orientation to approximate a three-dimensional view.

Electron density around Chain E:

$2mF_o-DF_c$ (at 0.7 rmsd) in gray
 mF_o-DF_c (at 3 rmsd) in purple (negative)
and green (positive)

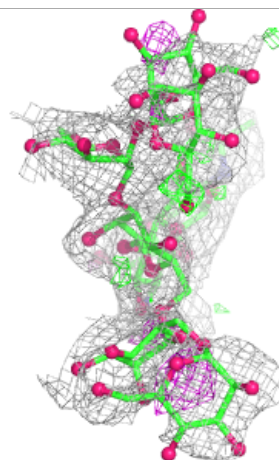
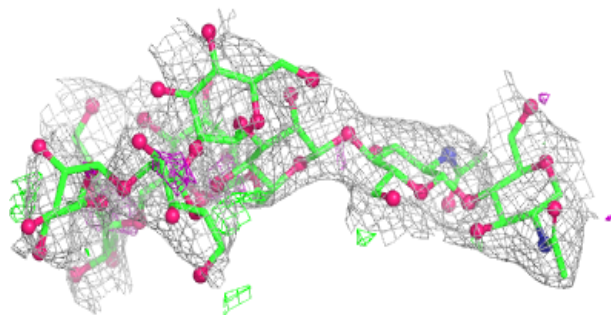
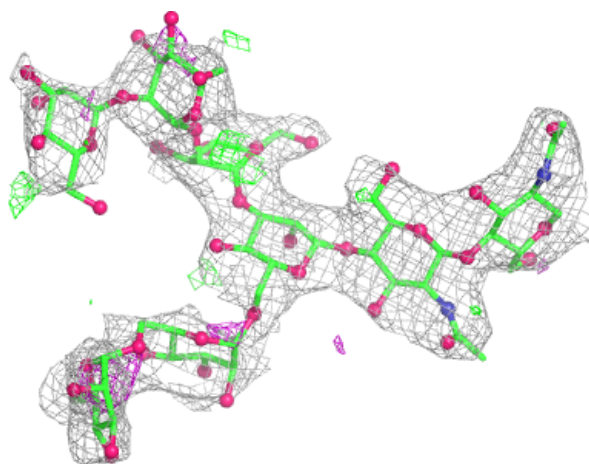
**Electron density around Chain F:**

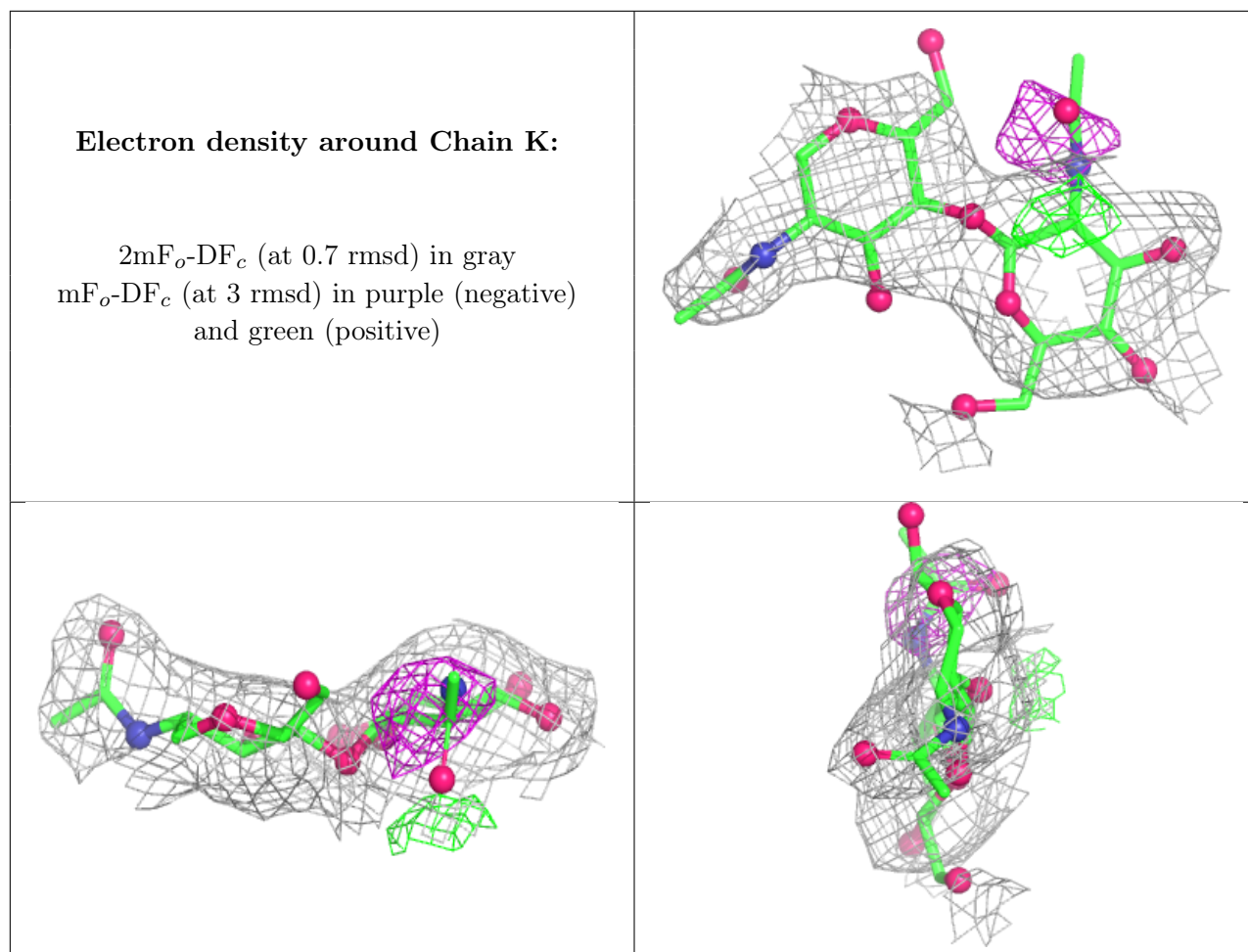
$2mF_o-DF_c$ (at 0.7 rmsd) in gray
 mF_o-DF_c (at 3 rmsd) in purple (negative)
and green (positive)



Electron density around Chain J:

$2mF_o-DF_c$ (at 0.7 rmsd) in gray
 mF_o-DF_c (at 3 rmsd) in purple (negative)
and green (positive)





6.4 Ligands [i](#)

In the following table, the Atoms column lists the number of modelled atoms in the group and the number defined in the chemical component dictionary. The B-factors column lists the minimum, median, 95th percentile and maximum values of B factors of atoms in the group. The column labelled 'Q<0.9' lists the number of atoms with occupancy less than 0.9.

Mol	Type	Chain	Res	Atoms	RSCC	RSR	B-factors(Å ²)	Q<0.9
8	NAG	G	604	14/15	0.46	0.16	157,169,176,177	0
8	NAG	D	604	14/15	0.57	0.17	62,92,102,102	14
8	NAG	C	604	14/15	0.57	0.14	130,137,146,151	0
8	NAG	D	603	14/15	0.61	0.14	96,106,115,115	0
8	NAG	I	603	14/15	0.67	0.14	95,107,124,126	0
8	NAG	D	602	14/15	0.69	0.15	89,95,101,102	0
8	NAG	G	601	14/15	0.71	0.12	83,97,126,135	0
8	NAG	I	602	14/15	0.78	0.13	59,73,83,91	14
8	NAG	C	602	14/15	0.78	0.12	69,89,101,109	0
8	NAG	G	603	14/15	0.79	0.15	70,75,84,92	14
8	NAG	C	603	14/15	0.83	0.10	65,72,79,83	0

Continued on next page...

Continued from previous page...

Mol	Type	Chain	Res	Atoms	RSCC	RSR	B-factors(\AA^2)	Q<0.9
8	NAG	I	601	14/15	0.86	0.12	34,68,77,95	0
8	NAG	G	602	14/15	0.87	0.15	60,66,82,96	14
8	NAG	D	601	14/15	0.89	0.12	69,93,102,108	0
8	NAG	C	601	14/15	0.91	0.19	55,68,87,141	14

6.5 Other polymers [i](#)

There are no such residues in this entry.