



## wwPDB EM Validation Summary Report ⓘ

Mar 8, 2026 – 03:02 AM UTC

PDB ID : 9FLY / pdb\_00009fly  
EMDB ID : EMD-50543  
Title : CryoEM structure of the base (4151-5009) in the grappling hook protein A (GhpA) in the bacterium Aureispira sp. CCB-QB1  
Authors : Lien, Y.-W.; Amendola, D.; Lee, K.S.; Bartlau, N.; Xu, J.; Furusawa, G.; Polz, M.F.; Stocker, R.; Weiss, G.L.; Pilhofer, M.  
Deposited on : 2024-06-05  
Resolution : 3.70 Å(reported)

This is a wwPDB EM Validation Summary Report for a publicly released PDB entry.

We welcome your comments at [validation@mail.wwpdb.org](mailto:validation@mail.wwpdb.org)

A user guide is available at

<https://www.wwpdb.org/validation/2017/EMValidationReportHelp>

with specific help available everywhere you see the ⓘ symbol.

The types of validation reports are described at

<http://www.wwpdb.org/validation/2017/FAQs#types>.

---

The following versions of software and data (see [references ⓘ](#)) were used in the production of this report:

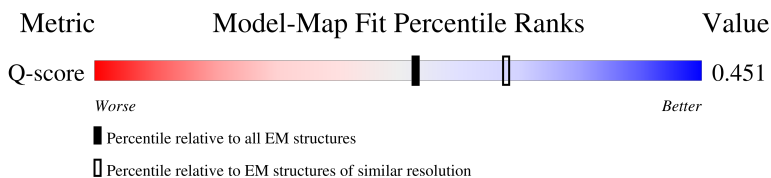
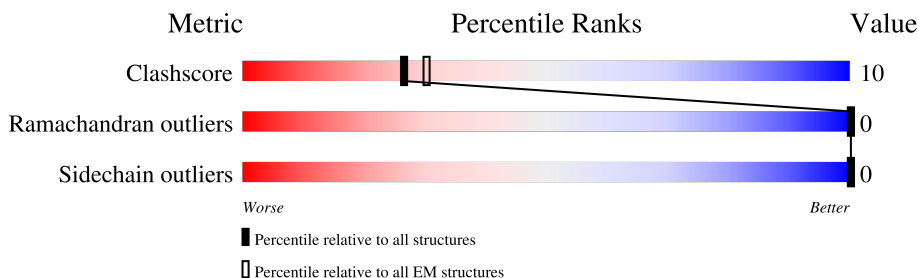
EMDB validation analysis : 0.0.1.dev132  
MolProbity : 4-5-2 with Phenix2.0  
Percentile statistics : 20250101.v01 (using entries in the PDB archive January 1st 2025)  
EM percentile statistics : 202505.v01 (Using data in the EMDB archive up until May 2025)  
MapQ : 1.9.13  
Ideal geometry (proteins) : Engh & Huber (2001)  
Ideal geometry (DNA, RNA) : Parkinson et al. (1996)  
Validation Pipeline (wwPDB-VP) : 2.49

# 1 Overall quality at a glance

The following experimental techniques were used to determine the structure:  
*ELECTRON MICROSCOPY*

The reported resolution of this entry is 3.70 Å.

Percentile scores (ranging between 0-100) for global validation metrics of the entry are shown in the following graphic. The table shows the number of entries on which the scores are based.






Metric	Whole archive (#Entries)	EM structures (#Entries)	Similar EM resolution (#Entries, resolution range(Å))
Clashscore	229148	23984	-
Ramachandran outliers	224038	23583	-
Sidechain outliers	223484	23102	-
Q-score	-	25397	11569 ( 3.20 - 4.20 )

The table below summarises the geometric issues observed across the polymeric chains and their fit to the map. The red, orange, yellow and green segments of the bar indicate the fraction of residues that contain outliers for  $\geq 3$ , 2, 1 and 0 types of geometric quality criteria respectively. A grey segment represents the fraction of residues that are not modelled. The numeric value for each fraction is indicated below the corresponding segment, with a dot representing fractions  $\leq 5\%$ . The upper red bar (where present) indicates the fraction of residues that have poor fit to the EM map (all-atom inclusion  $< 40\%$ ). The numeric value is given above the bar.

Mol	Chain	Length	Quality of chain
1	A	5898	13% 85%
1	B	5898	13% 85%
1	C	5898	13% 85%
1	D	5898	13% 85%

*Continued on next page...*

*Continued from previous page...*

Mol	Chain	Length	Quality of chain
1	E	5898	 13% 85%
1	F	5898	 13% 85%
1	G	5898	 13% 85%

## 2 Entry composition

There is only 1 type of molecule in this entry. The entry contains 43463 atoms, of which 0 are hydrogens and 0 are deuteriums.

In the tables below, the AltConf column contains the number of residues with at least one atom in alternate conformation and the Trace column contains the number of residues modelled with at most 2 atoms.

- Molecule 1 is a protein called The grappling hook protein A in the bacterium *Aureispira* sp. CCB-QB1.

Mol	Chain	Residues	Atoms					AltConf	Trace
			Total	C	N	O	S		
1	A	859	6209	3843	1005	1333	28	0	0
1	B	859	6209	3843	1005	1333	28	0	0
1	C	859	6209	3843	1005	1333	28	0	0
1	D	859	6209	3843	1005	1333	28	0	0
1	E	859	6209	3843	1005	1333	28	0	0
1	F	859	6209	3843	1005	1333	28	0	0
1	G	859	6209	3843	1005	1333	28	0	0

















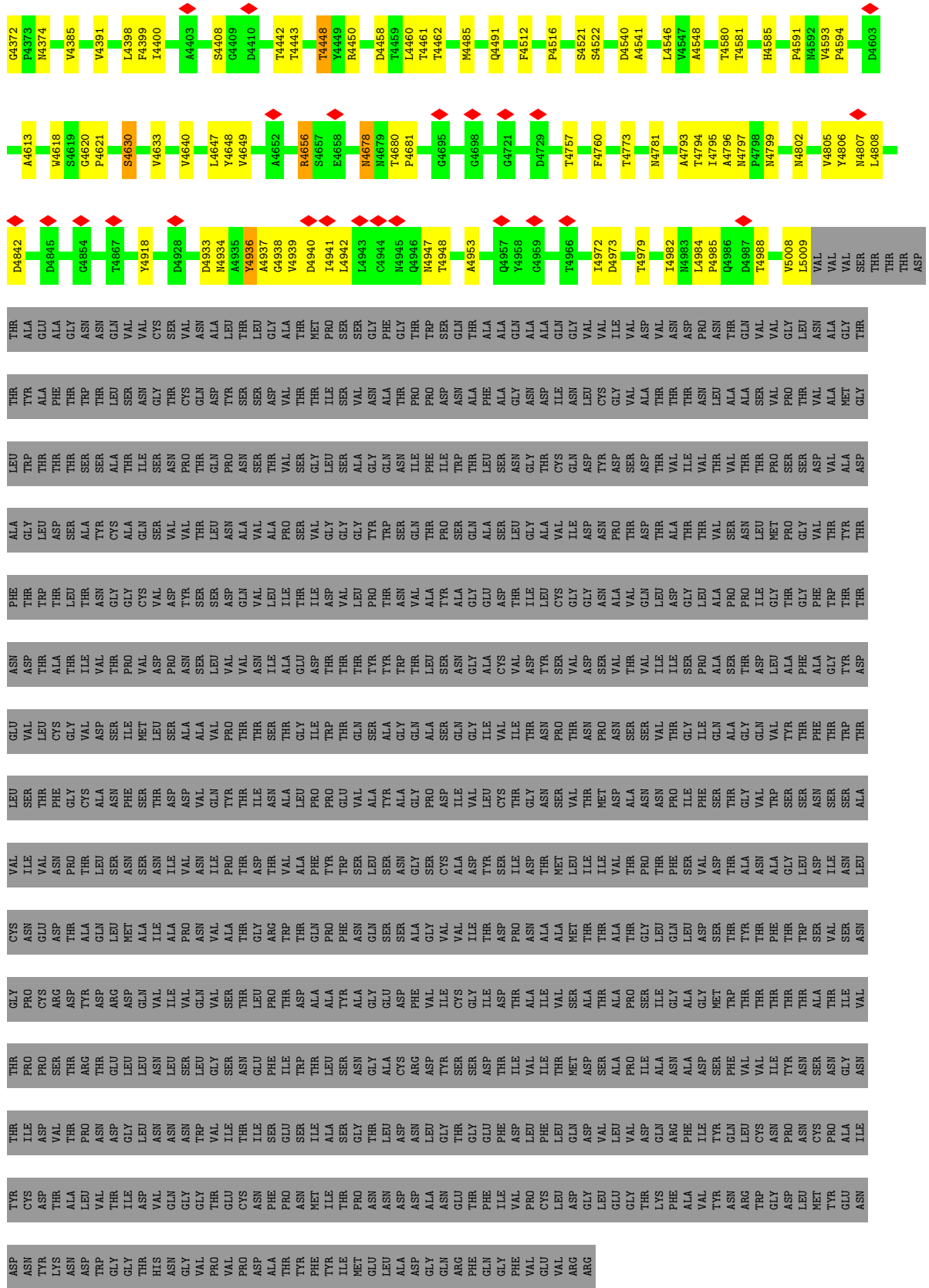












● Molecule 1: The grappling hook protein A in the bacterium *Aureispira* sp. CCB-QB1





































THR  
ILE  
ASP  
VAL  
THR  
ALA  
PRO  
LEU  
ASP  
GLY  
LEU  
ASN  
ASN  
GLN  
ASP  
TRP  
VAL  
THR  
ILE  
THR  
ASN  
SER  
GLU  
SER  
SER  
MET  
ILE  
ALA  
SER  
GLY  
THR  
LEU  
ASN  
ASP  
ALA  
LEU  
GLY  
THR  
GLY  
PHE  
ILE  
PHE  
ASP  
LEU  
PHE  
LEU  
GLN  
ASP  
VAL  
LEU  
VAL  
ASP  
GLN  
LYS  
PHE  
ARG  
PHE  
ALA  
ILE  
TYR  
GLN  
ASN  
ARG  
LEU  
TRP  
CYS  
GLY  
ASN  
PRO  
LEU  
MET  
ASN  
TYR  
GLU  
ALA

TYR  
CYS  
ASP  
THR  
ALA  
LEU  
VAL  
THR  
ILE  
THR  
ASP  
VAL  
GLN  
GLY  
GLY  
THR  
GLU  
ILE  
THR  
CYS  
ASN  
PHE  
PRO  
ASN  
SER  
MET  
ILE  
TYR  
SER  
ILE  
PRO  
MET  
ASN  
ASN  
LEU  
ALA  
ASP  
ASP  
ALA  
GLY  
GLN  
GLU  
THR  
PHE  
GLN  
ILE  
GLY  
PHE  
VAL  
PHE  
VAL  
PRO  
CYS  
LEU  
LEU  
ASP  
GLY  
LEU  
VAL  
GLY  
THR  
THR  
LYS  
PHE  
ARG  
ALA  
VAL  
TYR  
ASN  
ARG  
LEU  
TRP  
CYS  
GLY  
ASN  
PRO  
LEU  
MET  
ASN  
TYR  
GLU  
ALA

ASP  
ASN  
TYR  
LYS  
ASN  
ASP  
TRP  
GLY  
GLY  
THR  
HIS  
ASN  
GLN  
GLY  
VAL  
PRO  
VAL  
VAL  
PRO  
ASP  
ALA  
THR  
TYR  
PHE  
ILE  
MET  
GLU  
LEU  
ALA  
ALA  
GLY  
GLN  
ARG  
PHE  
GLN  
GLY  
PHE  
VAL  
VAL  
GLU  
VAL  
ARG  
ARG

## 4 Experimental information

Property	Value	Source
EM reconstruction method	SINGLE PARTICLE	Depositor
Imposed symmetry	POINT, C7	Depositor
Number of particles used	30181	Depositor
Resolution determination method	FSC 0.143 CUT-OFF	Depositor
CTF correction method	PHASE FLIPPING AND AMPLITUDE CORRECTION	Depositor
Microscope	FEI TITAN KRIOS	Depositor
Voltage (kV)	300	Depositor
Electron dose ( $e^-/\text{\AA}^2$ )	50	Depositor
Minimum defocus (nm)	1000	Depositor
Maximum defocus (nm)	2500	Depositor
Magnification	Not provided	
Image detector	GATAN K3 (6k x 4k)	Depositor
Maximum map value	6.879	Depositor
Minimum map value	-3.737	Depositor
Average map value	-0.002	Depositor
Map value standard deviation	0.105	Depositor
Recommended contour level	1.5	Depositor
Map size ( $\text{\AA}$ )	920.16, 920.16, 920.16	wwPDB
Map dimensions	540, 540, 540	wwPDB
Map angles ( $^\circ$ )	90.0, 90.0, 90.0	wwPDB
Pixel spacing ( $\text{\AA}$ )	1.704, 1.704, 1.704	Depositor

## 5 Model quality i

### 5.1 Standard geometry i

The Z score for a bond length (or angle) is the number of standard deviations the observed value is removed from the expected value. A bond length (or angle) with  $|Z| > 5$  is considered an outlier worth inspection. RMSZ is the root-mean-square of all Z scores of the bond lengths (or angles).

Mol	Chain	Bond lengths		Bond angles	
		RMSZ	# Z  >5	RMSZ	# Z  >5
1	A	0.91	2/6339 (0.0%)	1.10	18/8776 (0.2%)
1	B	0.91	2/6339 (0.0%)	1.10	20/8776 (0.2%)
1	C	0.91	2/6339 (0.0%)	1.10	18/8776 (0.2%)
1	D	0.91	2/6339 (0.0%)	1.10	20/8776 (0.2%)
1	E	0.91	2/6339 (0.0%)	1.10	18/8776 (0.2%)
1	F	0.91	2/6339 (0.0%)	1.10	18/8776 (0.2%)
1	G	0.91	2/6339 (0.0%)	1.10	18/8776 (0.2%)
All	All	0.91	14/44373 (0.0%)	1.10	130/61432 (0.2%)

Chiral center outliers are detected by calculating the chiral volume of a chiral center and verifying if the center is modelled as a planar moiety or with the opposite hand. A planarity outlier is detected by checking planarity of atoms in a peptide group, atoms in a mainchain group or atoms of a sidechain that are expected to be planar.

Mol	Chain	#Chirality outliers	#Planarity outliers
1	A	0	1
1	B	0	1
1	C	0	1
1	D	0	1
1	E	0	1
1	F	0	1
1	G	0	1
All	All	0	7

The worst 5 of 14 bond length outliers are listed below:

Mol	Chain	Res	Type	Atoms	Z	Observed(Å)	Ideal(Å)
1	D	4154	GLN	CA-C	-7.21	1.44	1.52
1	E	4154	GLN	CA-C	-6.89	1.44	1.52
1	F	4154	GLN	CA-C	-6.83	1.44	1.52
1	G	4154	GLN	CA-C	-6.67	1.44	1.52
1	B	4154	GLN	CA-C	-6.67	1.45	1.52

The worst 5 of 130 bond angle outliers are listed below:

Mol	Chain	Res	Type	Atoms	Z	Observed(°)	Ideal(°)
1	C	4154	GLN	CA-C-N	-10.16	108.56	122.98
1	C	4154	GLN	C-N-CA	-10.16	108.56	122.98
1	G	4154	GLN	CA-C-N	-10.15	108.56	122.98
1	G	4154	GLN	C-N-CA	-10.15	108.56	122.98
1	A	4154	GLN	CA-C-N	-10.15	108.57	122.98

There are no chirality outliers.

5 of 7 planarity outliers are listed below:

Mol	Chain	Res	Type	Group
1	A	4656	ARG	Sidechain
1	B	4656	ARG	Sidechain
1	C	4656	ARG	Sidechain
1	D	4656	ARG	Sidechain
1	E	4656	ARG	Sidechain

## 5.2 Too-close contacts [i](#)

In the following table, the Non-H and H(model) columns list the number of non-hydrogen atoms and hydrogen atoms in the chain respectively. The H(added) column lists the number of hydrogen atoms added and optimized by MolProbity. The Clashes column lists the number of clashes within the asymmetric unit, whereas Symm-Clashes lists symmetry-related clashes.

Mol	Chain	Non-H	H(model)	H(added)	Clashes	Symm-Clashes
1	A	6209	0	5891	169	0
1	B	6209	0	5891	173	0
1	C	6209	0	5891	177	0
1	D	6209	0	5891	172	0
1	E	6209	0	5891	165	0
1	F	6209	0	5891	170	0
1	G	6209	0	5891	170	0
All	All	43463	0	41237	846	0

The all-atom clashscore is defined as the number of clashes found per 1000 atoms (including hydrogen atoms). The all-atom clashscore for this structure is 10.

The worst 5 of 846 close contacts within the same asymmetric unit are listed below, sorted by their clash magnitude.

Atom-1	Atom-2	Interatomic distance (Å)	Clash overlap (Å)
1:E:4760:PHE:CD1	1:F:4806:TYR:CD2	1.85	1.64
1:B:4760:PHE:CD1	1:C:4806:TYR:CD2	1.84	1.64
1:F:4760:PHE:CD1	1:G:4806:TYR:CD2	1.85	1.63
1:C:4760:PHE:CD1	1:D:4806:TYR:CD2	1.83	1.61
1:A:4760:PHE:CD1	1:B:4806:TYR:CD2	1.87	1.61

There are no symmetry-related clashes.

## 5.3 Torsion angles [i](#)

### 5.3.1 Protein backbone [i](#)

In the following table, the Percentiles column shows the percent Ramachandran outliers of the chain as a percentile score with respect to all PDB entries followed by that with respect to all EM entries.

The Analysed column shows the number of residues for which the backbone conformation was analysed, and the total number of residues.

Mol	Chain	Analysed	Favoured	Allowed	Outliers	Percentiles	
1	A	857/5898 (14%)	833 (97%)	24 (3%)	0	100	100
1	B	857/5898 (14%)	833 (97%)	24 (3%)	0	100	100
1	C	857/5898 (14%)	833 (97%)	24 (3%)	0	100	100
1	D	857/5898 (14%)	833 (97%)	24 (3%)	0	100	100
1	E	857/5898 (14%)	833 (97%)	24 (3%)	0	100	100
1	F	857/5898 (14%)	833 (97%)	24 (3%)	0	100	100
1	G	857/5898 (14%)	833 (97%)	24 (3%)	0	100	100
All	All	5999/41286 (14%)	5831 (97%)	168 (3%)	0	100	100

There are no Ramachandran outliers to report.

### 5.3.2 Protein sidechains [i](#)

In the following table, the Percentiles column shows the percent sidechain outliers of the chain as a percentile score with respect to all PDB entries followed by that with respect to all EM entries.

The Analysed column shows the number of residues for which the sidechain conformation was analysed, and the total number of residues.

Mol	Chain	Analysed	Rotameric	Outliers	Percentiles	
1	A	718/4919 (15%)	718 (100%)	0	100	100
1	B	718/4919 (15%)	718 (100%)	0	100	100
1	C	718/4919 (15%)	718 (100%)	0	100	100
1	D	718/4919 (15%)	718 (100%)	0	100	100
1	E	718/4919 (15%)	718 (100%)	0	100	100
1	F	718/4919 (15%)	718 (100%)	0	100	100
1	G	718/4919 (15%)	718 (100%)	0	100	100
All	All	5026/34433 (15%)	5026 (100%)	0	100	100

There are no protein residues with a non-rotameric sidechain to report.

Sometimes sidechains can be flipped to improve hydrogen bonding and reduce clashes. 5 of 58 such sidechains are listed below:

Mol	Chain	Res	Type
1	D	4781	ASN
1	G	4903	ASN
1	E	4420	ASN
1	G	4781	ASN
1	G	4188	GLN

### 5.3.3 RNA [i](#)

There are no RNA molecules in this entry.

## 5.4 Non-standard residues in protein, DNA, RNA chains [i](#)

There are no non-standard protein/DNA/RNA residues in this entry.

## 5.5 Carbohydrates [i](#)

There are no oligosaccharides in this entry.

## 5.6 Ligand geometry [i](#)

There are no ligands in this entry.

## 5.7 Other polymers [i](#)

There are no such residues in this entry.

## 5.8 Polymer linkage issues [i](#)

There are no chain breaks in this entry.

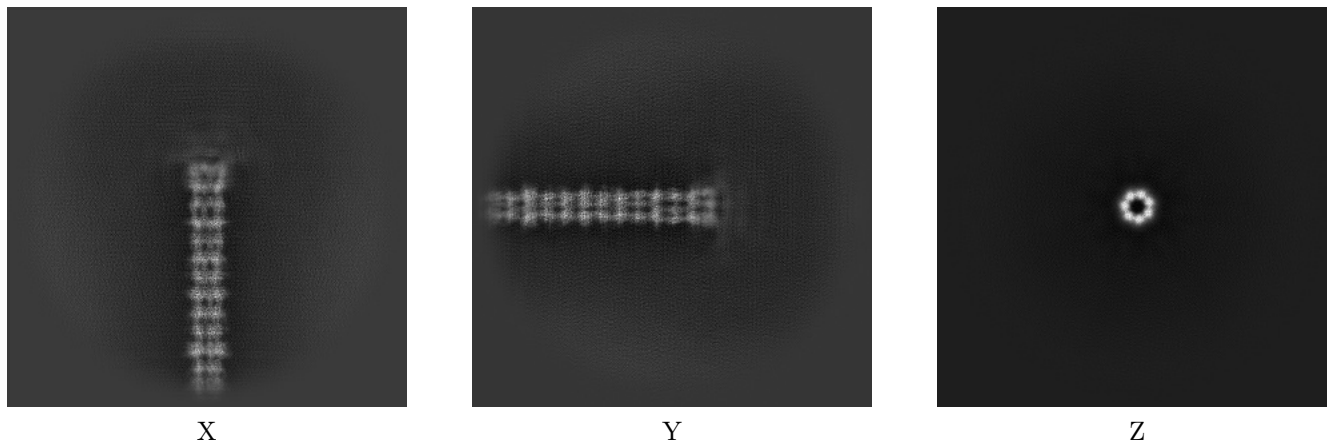
## 6 Map visualisation [i](#)

This section contains visualisations of the EMDB entry EMD-50543. These allow visual inspection of the internal detail of the map and identification of artifacts.

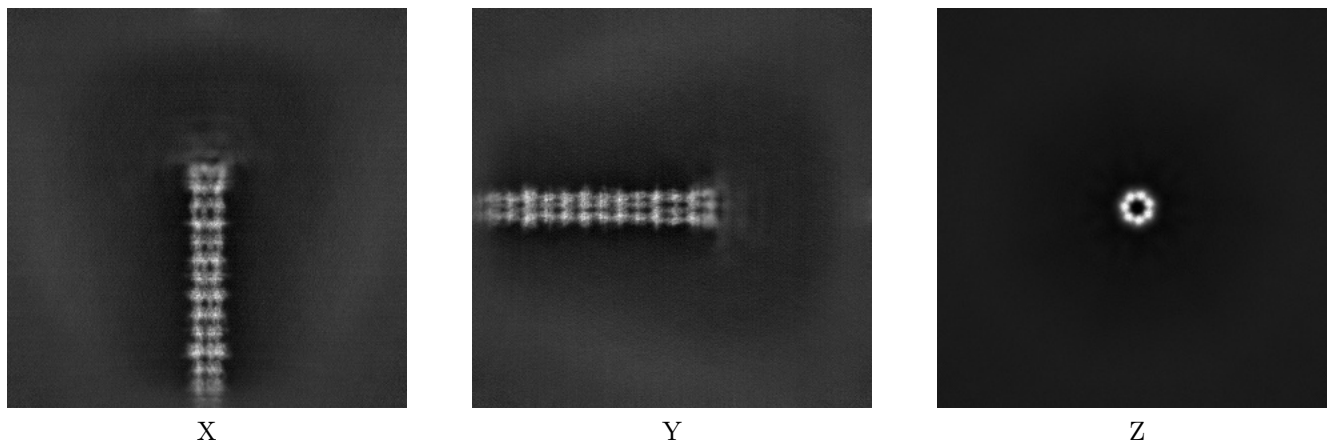
Images derived from a raw map, generated by summing the deposited half-maps, are presented below the corresponding image components of the primary map to allow further visual inspection and comparison with those of the primary map.

### 6.1 Orthogonal projections [i](#)

#### 6.1.1 Primary map



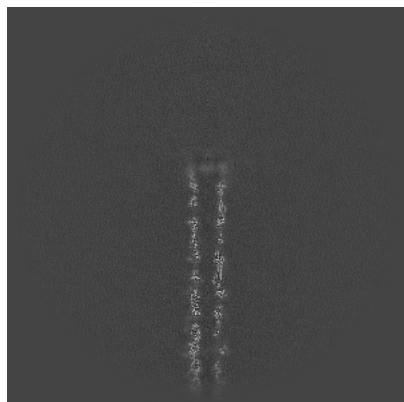
#### 6.1.2 Raw map



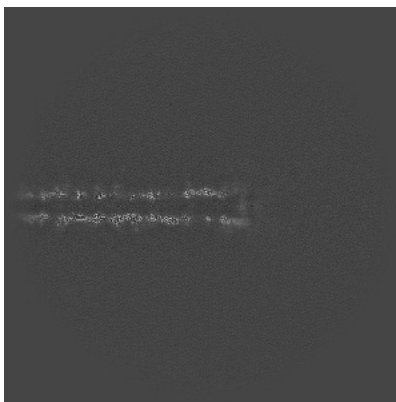
The images above show the map projected in three orthogonal directions.

## 6.2 Central slices [i](#)

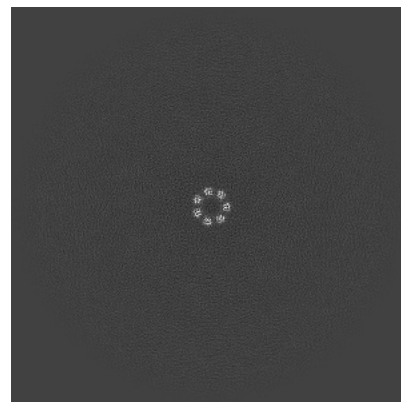
### 6.2.1 Primary map



X Index: 270

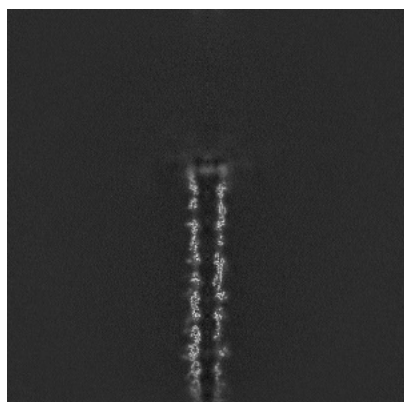


Y Index: 270

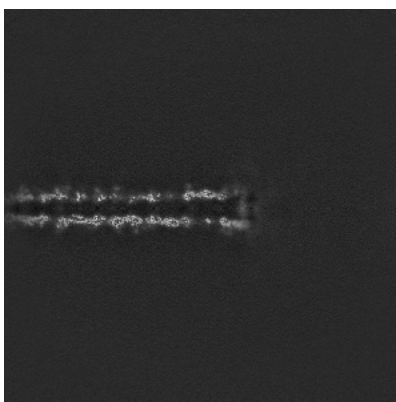


Z Index: 270

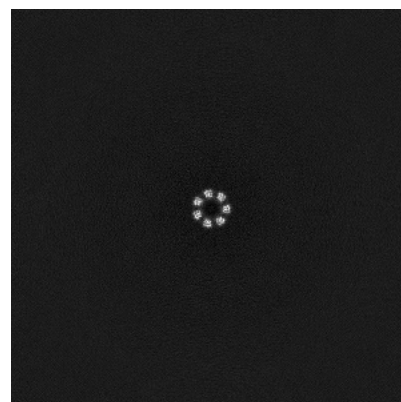
### 6.2.2 Raw map



X Index: 270



Y Index: 270



Z Index: 270

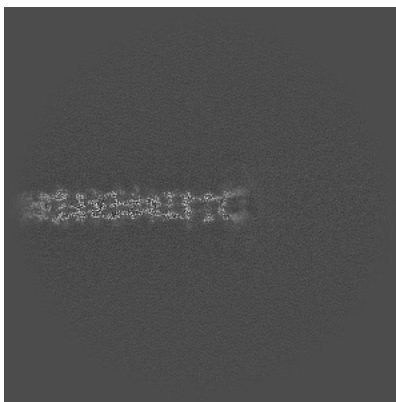
The images above show central slices of the map in three orthogonal directions.

## 6.3 Largest variance slices [i](#)

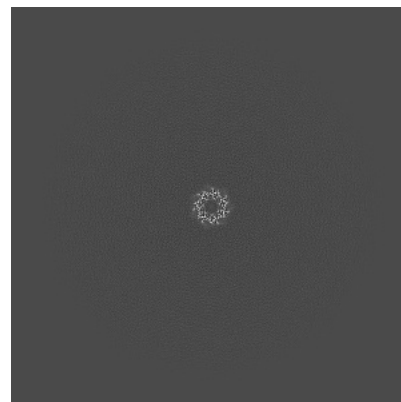
### 6.3.1 Primary map



X Index: 257

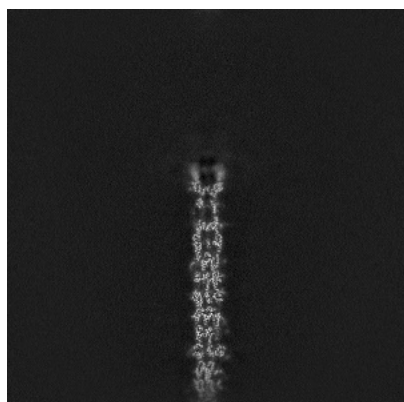


Y Index: 257

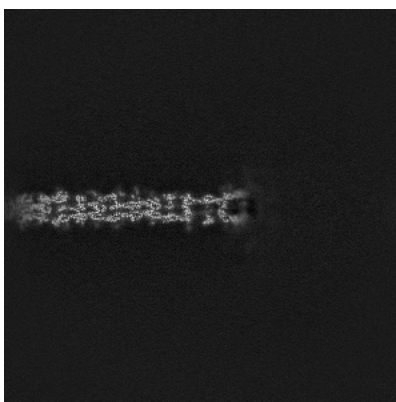


Z Index: 149

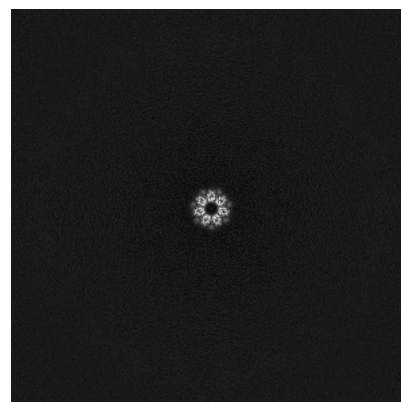
### 6.3.2 Raw map



X Index: 257



Y Index: 257

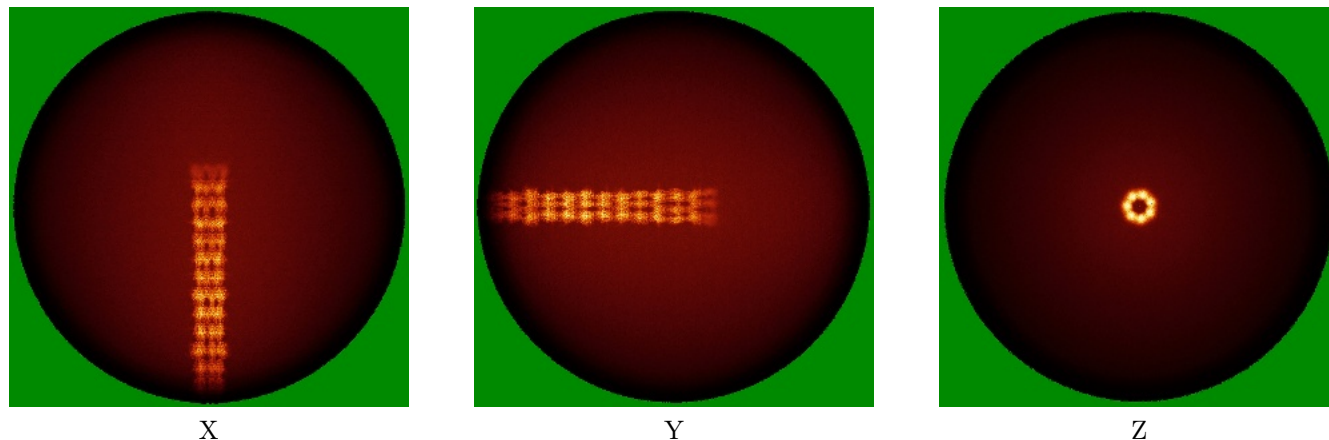


Z Index: 198

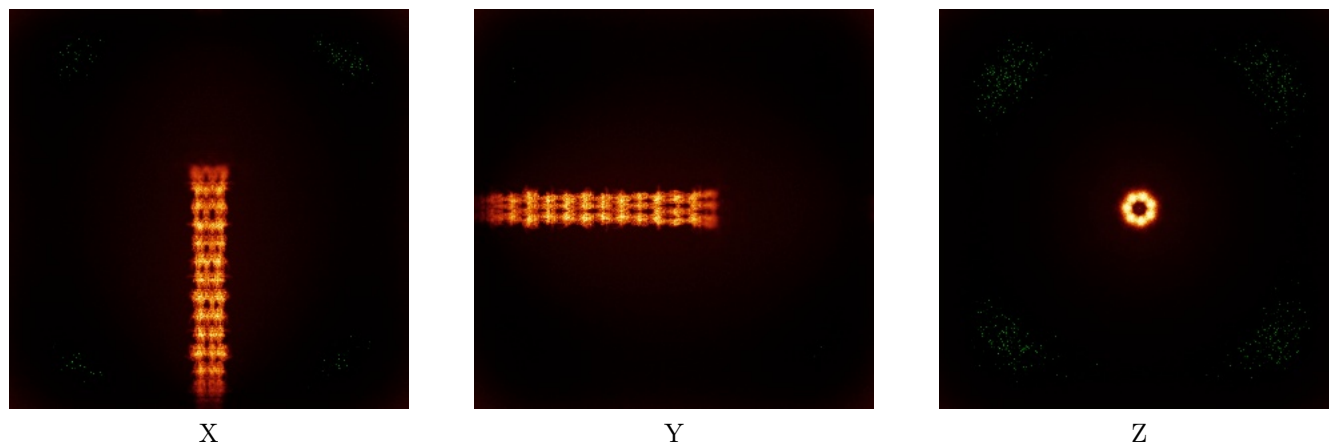
The images above show the largest variance slices of the map in three orthogonal directions.

## 6.4 Orthogonal standard-deviation projections (False-color) [i](#)

### 6.4.1 Primary map



### 6.4.2 Raw map



The images above show the map standard deviation projections with false color in three orthogonal directions. Minimum values are shown in green, max in blue, and dark to light orange shades represent small to large values respectively.

## 6.5 Orthogonal surface views [i](#)

This section was not generated.

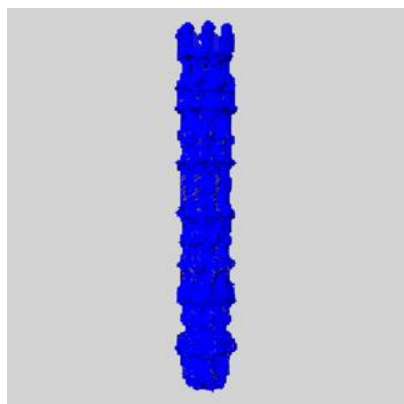
## 6.6 Mask visualisation [i](#)

This section shows the 3D surface view of the primary map at 50% transparency overlaid with the specified mask at 0% transparency

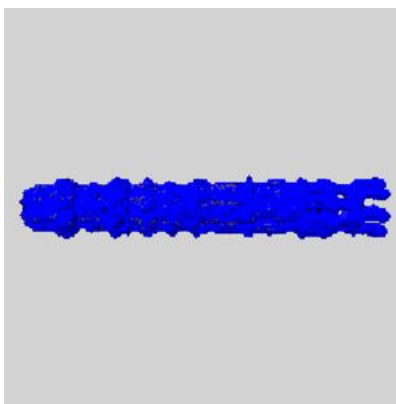
A mask typically either:

- Encompasses the whole structure
- Separates out a domain, a functional unit, a monomer or an area of interest from a larger structure

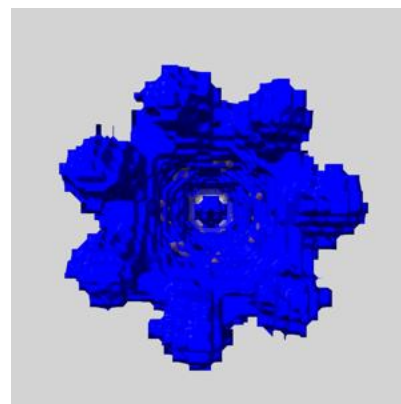
### 6.6.1 emd\_50543\_msk\_1.map [i](#)



X



Y

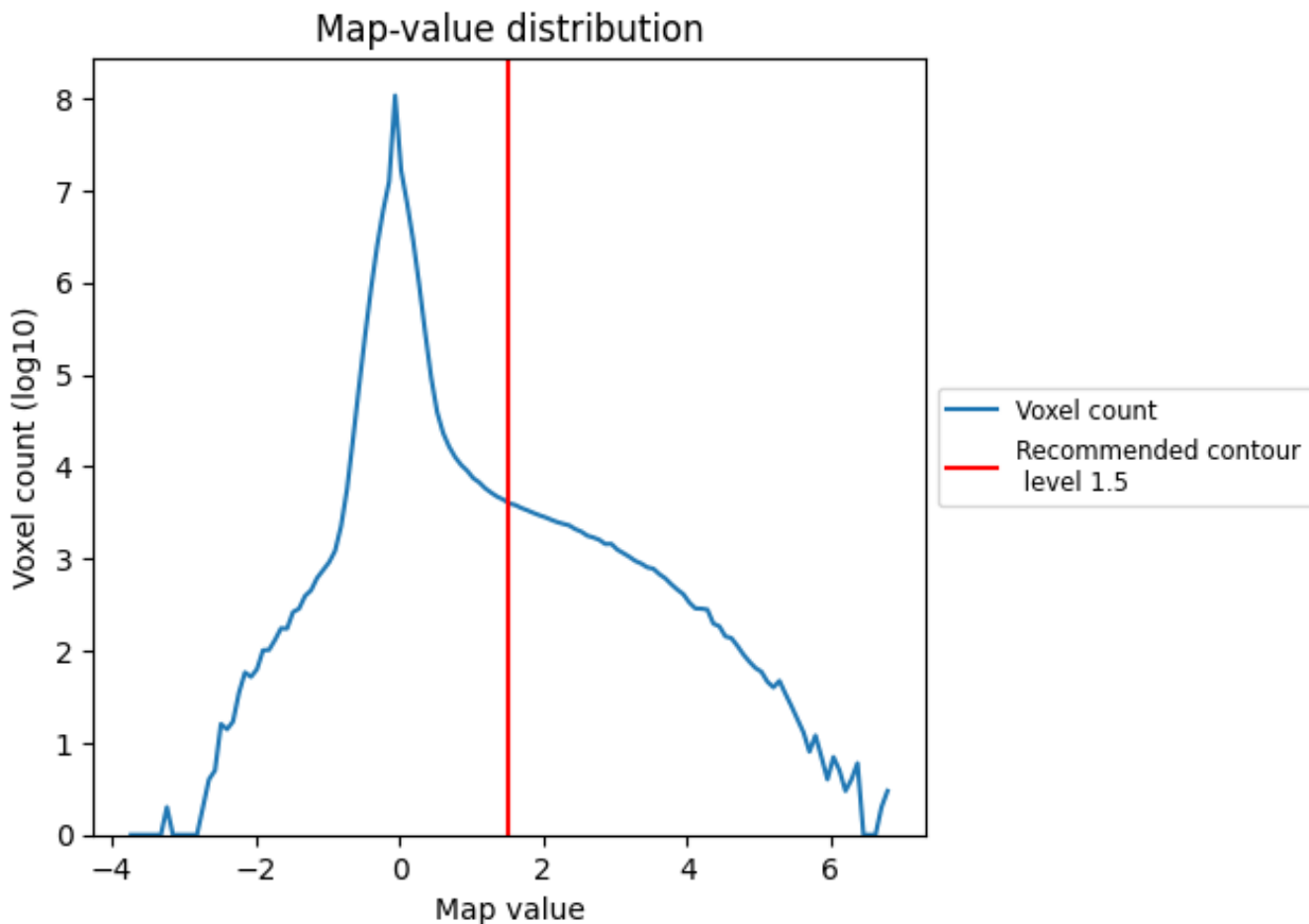


Z

## 7 Map analysis [i](#)

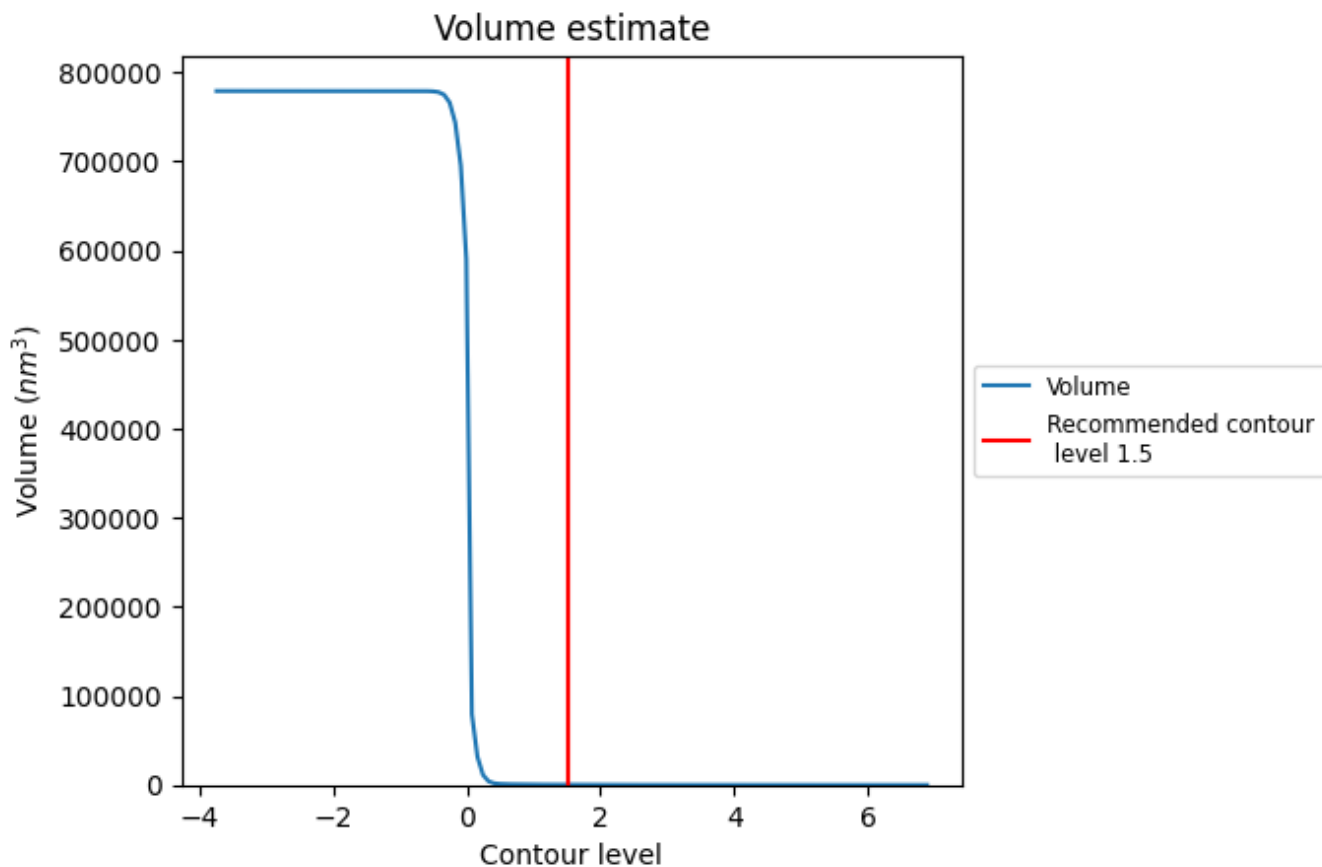
This section contains the results of statistical analysis of the map.

### 7.1 Map-value distribution [i](#)



The map-value distribution is plotted in 128 intervals along the x-axis. The y-axis is logarithmic. A spike in this graph at zero usually indicates that the volume has been masked.

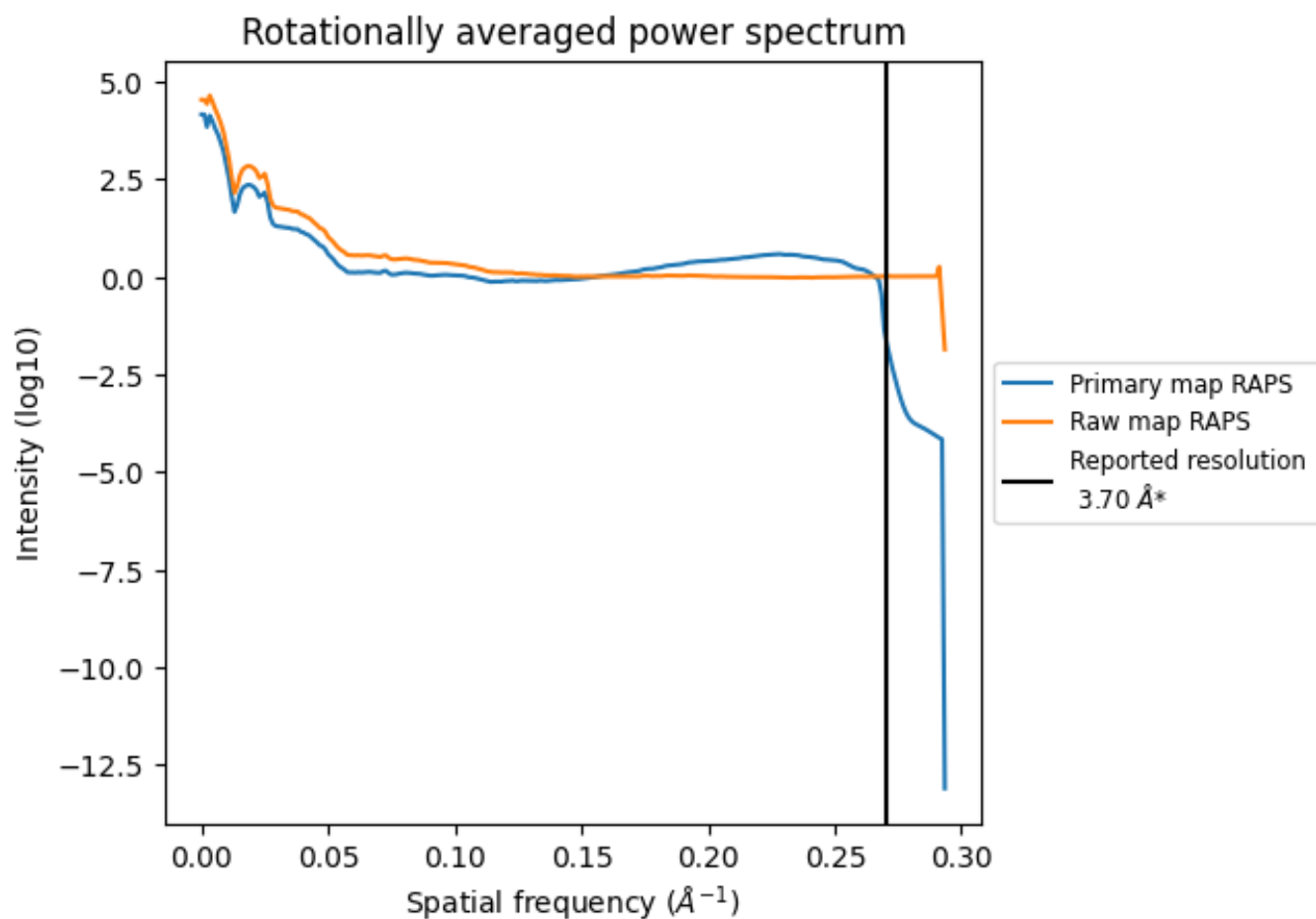
## 7.2 Volume estimate [\(i\)](#)



The volume at the recommended contour level is 292 nm<sup>3</sup>; this corresponds to an approximate mass of 264 kDa.

The volume estimate graph shows how the enclosed volume varies with the contour level. The recommended contour level is shown as a vertical line and the intersection between the line and the curve gives the volume of the enclosed surface at the given level.

### 7.3 Rotationally averaged power spectrum [i](#)

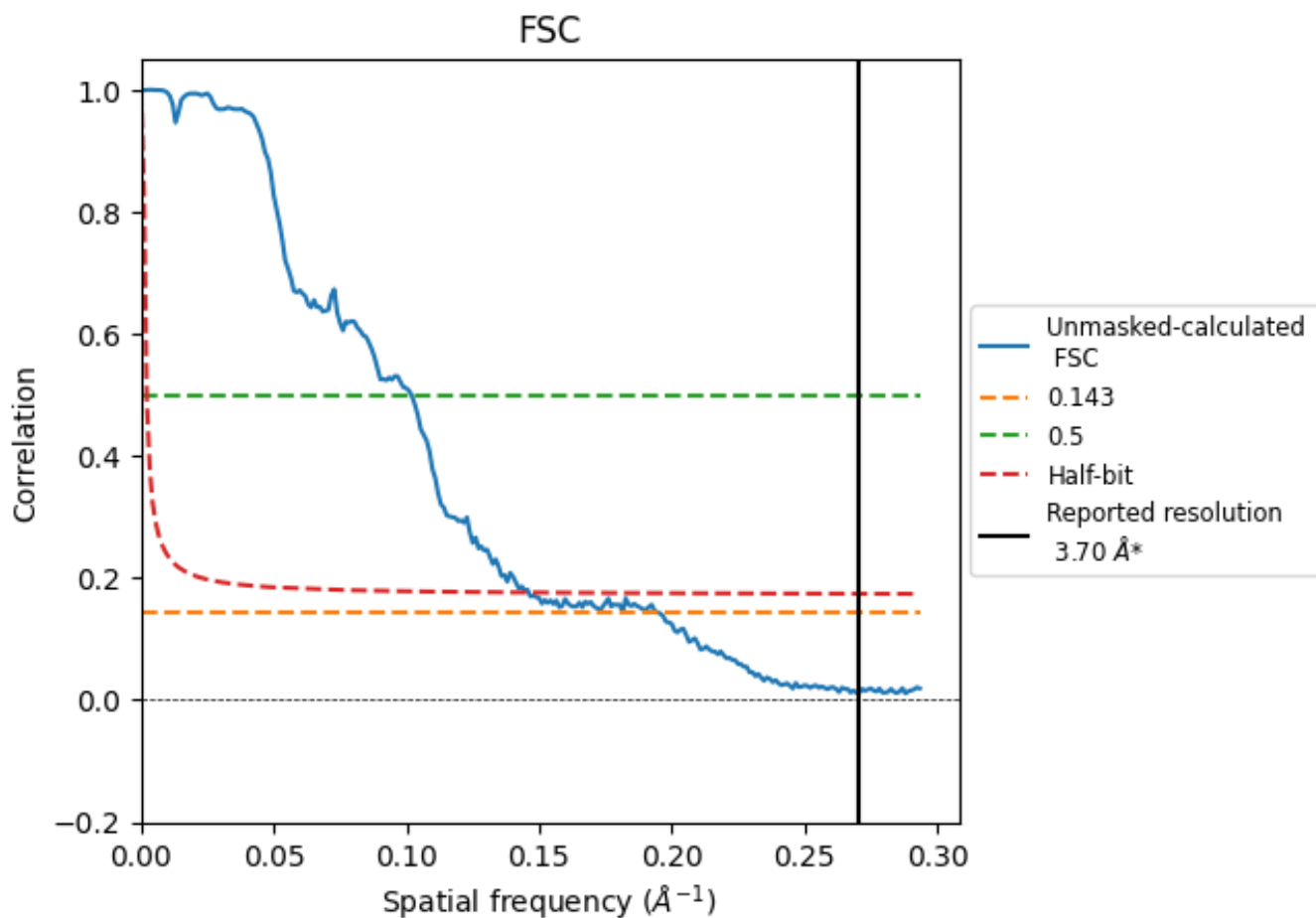


\*Reported resolution corresponds to spatial frequency of 0.270 Å<sup>-1</sup>

## 8 Fourier-Shell correlation [i](#)

Fourier-Shell Correlation (FSC) is the most commonly used method to estimate the resolution of single-particle and subtomogram-averaged maps. The shape of the curve depends on the imposed symmetry, mask and whether or not the two 3D reconstructions used were processed from a common reference. The reported resolution is shown as a black line. A curve is displayed for the half-bit criterion in addition to lines showing the 0.143 gold standard cut-off and 0.5 cut-off.

### 8.1 FSC [i](#)



\*Reported resolution corresponds to spatial frequency of 0.270 Å<sup>-1</sup>

## 8.2 Resolution estimates [i](#)

Resolution estimate (Å)	Estimation criterion (FSC cut-off)		
	0.143	0.5	Half-bit
Reported by author	3.70	-	-
Author-provided FSC curve	-	-	-
Unmasked-calculated*	5.13	9.83	6.84

\*Resolution estimate based on FSC curve calculated by comparison of deposited half-maps. The value from deposited half-maps intersecting FSC 0.143 CUT-OFF 5.13 differs from the reported value 3.7 by more than 10 %

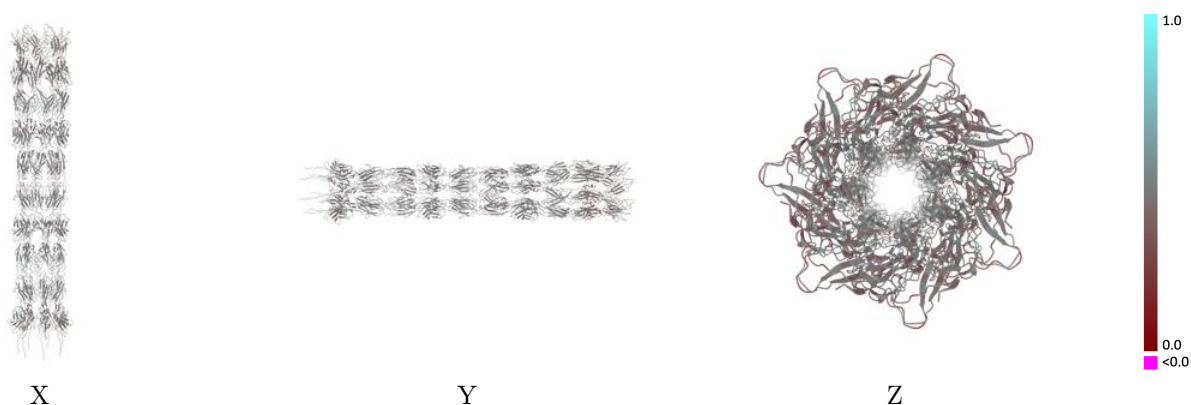
## 9 Map-model fit [i](#)

This section contains information regarding the fit between EMDB map EMD-50543 and PDB model 9FLY. Per-residue inclusion information can be found in section 3 on page 5.

### 9.1 Map-model overlay [i](#)

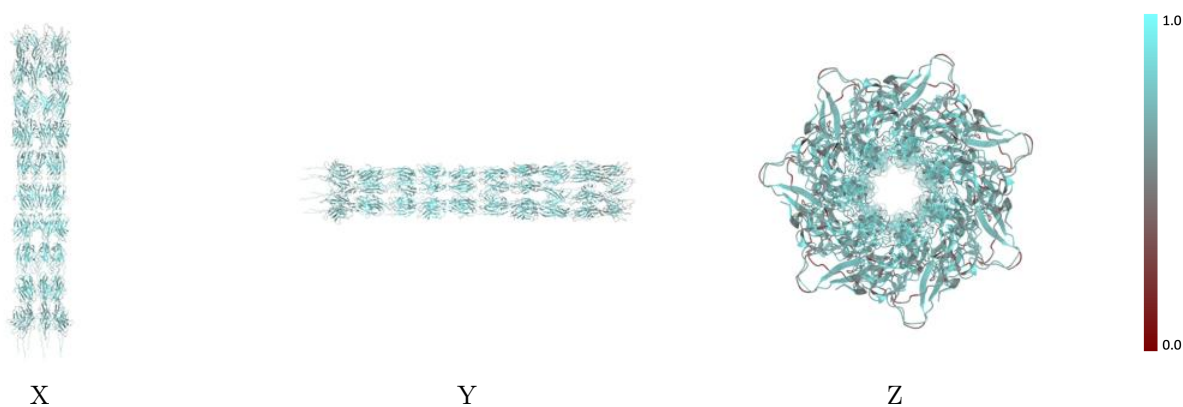
This section was not generated.

### 9.2 Q-score mapped to coordinate model [i](#)



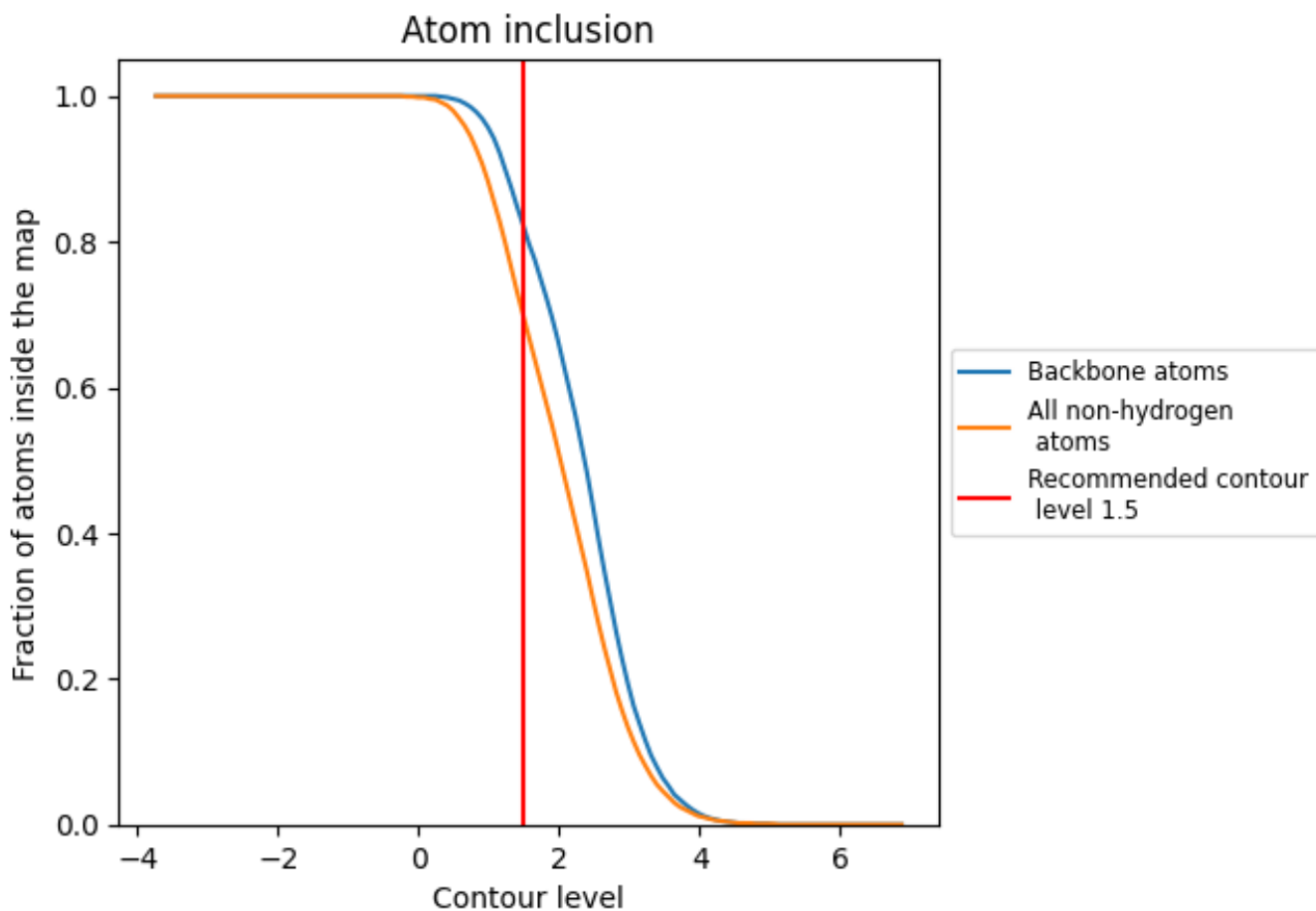
The images above show the model with each residue coloured according to its Q-score. This shows their resolvability in the map with higher Q-score values reflecting better resolvability. Please note: Q-score is calculating the resolvability of atoms, and thus high values are only expected at resolutions at which atoms can be resolved. Low Q-score values may therefore be expected for many entries.

### 9.3 Atom inclusion mapped to coordinate model [i](#)



The images above show the model with each residue coloured according to its atom inclusion. This shows to what extent they are inside the map at the recommended contour level (1.5).

















## 9.4 Atom inclusion [i](#)



At the recommended contour level, 82% of all backbone atoms, 70% of all non-hydrogen atoms, are inside the map.

## 9.5 Map-model fit summary

The table lists the average atom inclusion at the recommended contour level (1.5) and Q-score for the entire model and for each chain.

Chain	Atom inclusion	Q-score
All	 0.6960	 0.4510
A	 0.6990	 0.4520
B	 0.6940	 0.4520
C	 0.6920	 0.4520
D	 0.6970	 0.4510
E	 0.6980	 0.4530
F	 0.6960	 0.4490
G	 0.6960	 0.4510

