



# wwPDB X-ray Structure Validation Summary Report ⓘ

Apr 25, 2026 – 04:52 PM EDT

PDB ID : 6FNT / pdb\_00006fnt  
Title : Ergothioneine-biosynthetic methyltransferase EgtD in complex with pyrro-  
lidinohistidine  
Authors : Vit, A.; Blankenfeldt, W.; Seebeck, F.P.  
Deposited on : 2018-02-05  
Resolution : 1.90 Å(reported)

This is a wwPDB X-ray Structure Validation Summary Report for a publicly released PDB entry.

We welcome your comments at [validation@mail.wwpdb.org](mailto:validation@mail.wwpdb.org)

A user guide is available at

<https://www.wwpdb.org/validation/2017/XrayValidationReportHelp>

with specific help available everywhere you see the ⓘ symbol.

The types of validation reports are described at

<http://www.wwpdb.org/validation/2017/FAQs#types>.

---

The following versions of software and data (see [references ⓘ](#)) were used in the production of this report:

MolProbity : 4-5-2 with Phenix2.0  
Mogul : 2022.3.0, CSD as543be (2022)  
Xtriage (Phenix) : 2.0  
EDS : 3.0  
Percentile statistics : 20250101.v01 (using entries in the PDB archive January 1st 2025)  
CCP4 : 9.0.010 (Gargrove)  
Density-Fitness : 1.0.12  
Ideal geometry (proteins) : Engh & Huber (2001)  
Ideal geometry (DNA, RNA) : Parkinson et al. (1996)  
Validation Pipeline (wwPDB-VP) : 2.49

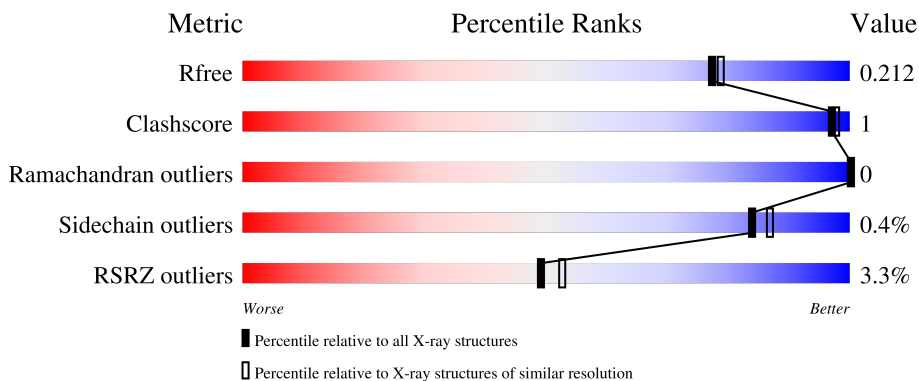
# 1 Overall quality at a glance

The following experimental techniques were used to determine the structure:

*X-RAY DIFFRACTION*

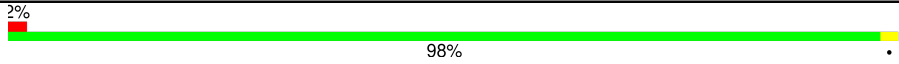
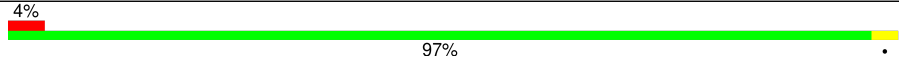
The reported resolution of this entry is 1.90 Å.

Percentile scores (ranging between 0-100) for global validation metrics of the entry are shown in the following graphic. The table shows the number of entries on which the scores are based.



Metric	Whole archive (#Entries)	Similar resolution (#Entries, resolution range(Å))
$R_{free}$	180053	7789 (1.90-1.90)
Clashscore	190562	8410 (1.90-1.90)
Ramachandran outliers	187476	8333 (1.90-1.90)
Sidechain outliers	187428	8333 (1.90-1.90)
RSRZ outliers	180081	7790 (1.90-1.90)

The table below summarises the geometric issues observed across the polymeric chains and their fit to the electron density. The red, orange, yellow and green segments of the lower bar indicate the fraction of residues that contain outliers for  $\geq 3$ , 2, 1 and 0 types of geometric quality criteria respectively. A grey segment represents the fraction of residues that are not modelled. The numeric value for each fraction is indicated below the corresponding segment, with a dot representing fractions  $\leq 5\%$ . The upper red bar (where present) indicates the fraction of residues that have poor fit to the electron density. The numeric value is given above the bar.

Mol	Chain	Length	Quality of chain
1	A	323	
1	B	323	

## 2 Entry composition

There are 3 unique types of molecules in this entry. The entry contains 10193 atoms, of which 4908 are hydrogens and 0 are deuteriums.

In the tables below, the ZeroOcc column contains the number of atoms modelled with zero occupancy, the AltConf column contains the number of residues with at least one atom in alternate conformation and the Trace column contains the number of residues modelled with at most 2 atoms.

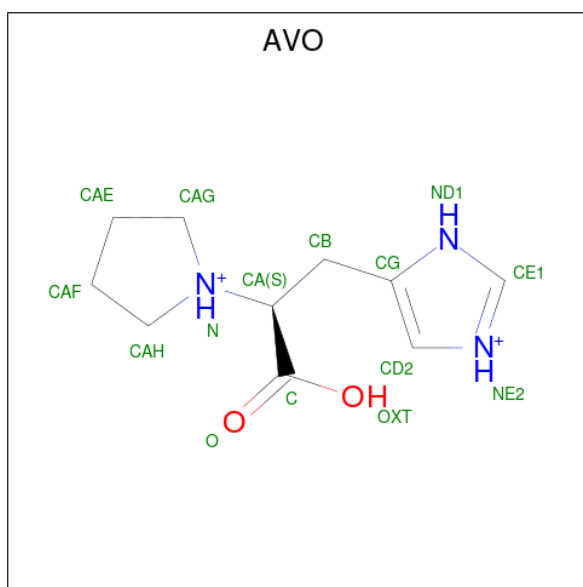
- Molecule 1 is a protein called Histidine N-alpha-methyltransferase.

Mol	Chain	Residues	Atoms					ZeroOcc	AltConf	Trace	
			Total	C	H	N	O				S
1	A	322	4928	1562	2451	433	475	7	0	5	0
1	B	323	4896	1554	2427	435	473	7	0	1	0

There are 8 discrepancies between the modelled and reference sequences:

Chain	Residue	Modelled	Actual	Comment	Reference
A	-1	GLY	-	expression tag	UNP A0A0D6J225
A	0	HIS	-	expression tag	UNP A0A0D6J225
A	1	MET	-	expression tag	UNP A0A0D6J225
A	2	ALA	-	expression tag	UNP A0A0D6J225
B	-1	GLY	-	expression tag	UNP A0A0D6J225
B	0	HIS	-	expression tag	UNP A0A0D6J225
B	1	MET	-	expression tag	UNP A0A0D6J225
B	2	ALA	-	expression tag	UNP A0A0D6J225

- Molecule 2 is Pyrrolidinohistidine (CCD ID: AVO) (formula:  $C_{10}H_{17}N_3O_2$ ).



Mol	Chain	Residues	Atoms				ZeroOcc	AltConf	
			Total	C	H	N			O
2	A	1	30	10	15	3	2	0	0
2	B	1	30	10	15	3	2	0	0

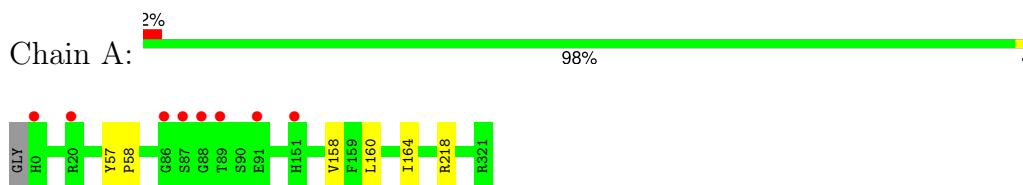
- Molecule 3 is water.

Mol	Chain	Residues	Atoms		ZeroOcc	AltConf
			Total	O		
3	A	161	161	161	0	0
3	B	148	148	148	0	0

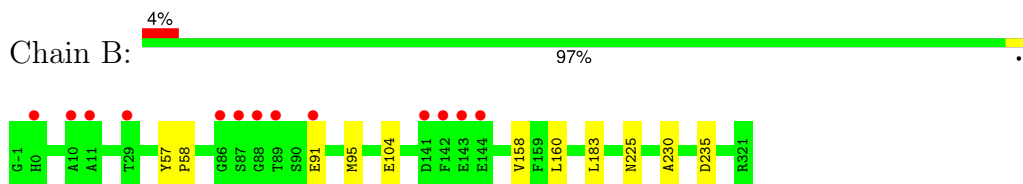
### 3 Residue-property plots [i](#)

These plots are drawn for all protein, RNA, DNA and oligosaccharide chains in the entry. The first graphic for a chain summarises the proportions of the various outlier classes displayed in the second graphic. The second graphic shows the sequence view annotated by issues in geometry and electron density. Residues are color-coded according to the number of geometric quality criteria for which they contain at least one outlier: green = 0, yellow = 1, orange = 2 and red = 3 or more. A red dot above a residue indicates a poor fit to the electron density ( $RSRZ > 2$ ). Stretches of 2 or more consecutive residues without any outlier are shown as a green connector. Residues present in the sample, but not in the model, are shown in grey.

- Molecule 1: Histidine N-alpha-methyltransferase



- Molecule 1: Histidine N-alpha-methyltransferase



## 4 Data and refinement statistics

Property	Value	Source
Space group	P 21 21 21	Depositor
Cell constants a, b, c, $\alpha$ , $\beta$ , $\gamma$	71.77Å 77.53Å 139.04Å 90.00° 90.00° 90.00°	Depositor
Resolution (Å)	41.98 – 1.90 41.98 – 1.90	Depositor EDS
% Data completeness (in resolution range)	100.0 (41.98-1.90) 100.0 (41.98-1.90)	Depositor EDS
$R_{merge}$	0.09	Depositor
$R_{sym}$	(Not available)	Depositor
$\langle I/\sigma(I) \rangle$ <sup>1</sup>	2.29 (at 1.89Å)	Xtrriage
Refinement program	PHENIX	Depositor
R, $R_{free}$	0.170 , 0.207 0.184 , 0.212	Depositor DCC
$R_{free}$ test set	3107 reflections (5.02%)	wwPDB-VP
Wilson B-factor (Å <sup>2</sup> )	29.9	Xtrriage
Anisotropy	0.718	Xtrriage
Bulk solvent $k_{sol}$ (e/Å <sup>3</sup> ), $B_{sol}$ (Å <sup>2</sup> )	0.40 , 36.7	EDS
L-test for twinning <sup>2</sup>	$\langle  L  \rangle = 0.49$ , $\langle L^2 \rangle = 0.32$	Xtrriage
Estimated twinning fraction	No twinning to report.	Xtrriage
$F_o, F_c$ correlation	0.97	EDS
Total number of atoms	10193	wwPDB-VP
Average B, all atoms (Å <sup>2</sup> )	44.0	wwPDB-VP

Xtrriage's analysis on translational NCS is as follows: *The largest off-origin peak in the Patterson function is 5.30% of the height of the origin peak. No significant pseudotranslation is detected.*

<sup>1</sup>Intensities estimated from amplitudes.

<sup>2</sup>Theoretical values of  $\langle |L| \rangle$ ,  $\langle L^2 \rangle$  for acentric reflections are 0.5, 0.333 respectively for untwinned datasets, and 0.375, 0.2 for perfectly twinned datasets.

## 5 Model quality [i](#)

### 5.1 Standard geometry [i](#)

Bond lengths and bond angles in the following residue types are not validated in this section: AVO

The Z score for a bond length (or angle) is the number of standard deviations the observed value is removed from the expected value. A bond length (or angle) with  $|Z| > 5$  is considered an outlier worth inspection. RMSZ is the root-mean-square of all Z scores of the bond lengths (or angles).

Mol	Chain	Bond lengths		Bond angles	
		RMSZ	# Z  >5	RMSZ	# Z  >5
1	A	0.35	0/2537	0.64	0/3449
1	B	0.34	0/2518	0.65	0/3423
All	All	0.34	0/5055	0.65	0/6872

There are no bond length outliers.

There are no bond angle outliers.

There are no chirality outliers.

There are no planarity outliers.

### 5.2 Too-close contacts [i](#)

In the following table, the Non-H and H(model) columns list the number of non-hydrogen atoms and hydrogen atoms in the chain respectively. The H(added) column lists the number of hydrogen atoms added and optimized by MolProbity. The Clashes column lists the number of clashes within the asymmetric unit, whereas Symm-Clashes lists symmetry-related clashes.

Mol	Chain	Non-H	H(model)	H(added)	Clashes	Symm-Clashes
1	A	2477	2451	2449	3	0
1	B	2469	2427	2428	6	0
2	A	15	15	0	0	0
2	B	15	15	0	0	0
3	A	161	0	0	1	0
3	B	148	0	0	2	0
All	All	5285	4908	4877	9	0

The all-atom clashscore is defined as the number of clashes found per 1000 atoms (including hydrogen atoms). The all-atom clashscore for this structure is 1.

The worst 5 of 9 close contacts within the same asymmetric unit are listed below, sorted by their

clash magnitude.

Atom-1	Atom-2	Interatomic distance (Å)	Clash overlap (Å)
1:B:235:ASP:OD1	3:B:501:HOH:O	2.17	0.56
1:B:183:LEU:O	3:B:502:HOH:O	2.18	0.56
1:B:91:GLU:HG2	1:B:95:MET:HE3	1.88	0.55
1:A:218:ARG:NH1	3:A:501:HOH:O	2.25	0.53
1:A:57:TYR:N	1:A:58:PRO:CD	2.77	0.47

There are no symmetry-related clashes.

## 5.3 Torsion angles [i](#)

### 5.3.1 Protein backbone [i](#)

In the following table, the Percentiles column shows the percent Ramachandran outliers of the chain as a percentile score with respect to all X-ray entries followed by that with respect to entries of similar resolution.

The Analysed column shows the number of residues for which the backbone conformation was analysed, and the total number of residues.

Mol	Chain	Analysed	Favoured	Allowed	Outliers	Percentiles	
1	A	325/323 (101%)	319 (98%)	6 (2%)	0	100	100
1	B	322/323 (100%)	317 (98%)	5 (2%)	0	100	100
All	All	647/646 (100%)	636 (98%)	11 (2%)	0	100	100

There are no Ramachandran outliers to report.

### 5.3.2 Protein sidechains [i](#)

In the following table, the Percentiles column shows the percent sidechain outliers of the chain as a percentile score with respect to all X-ray entries followed by that with respect to entries of similar resolution.

The Analysed column shows the number of residues for which the sidechain conformation was analysed, and the total number of residues.

Mol	Chain	Analysed	Rotameric	Outliers	Percentiles	
1	A	253/254 (100%)	252 (100%)	1 (0%)	84	87
1	B	250/254 (98%)	249 (100%)	1 (0%)	84	87

*Continued on next page...*

*Continued from previous page...*

Mol	Chain	Analysed	Rotameric	Outliers	Percentiles	
All	All	503/508 (99%)	501 (100%)	2 (0%)	84	87

All (2) residues with a non-rotameric sidechain are listed below:

Mol	Chain	Res	Type
1	A	164	ILE
1	B	104	GLU

Sometimes sidechains can be flipped to improve hydrogen bonding and reduce clashes. All (5) such sidechains are listed below:

Mol	Chain	Res	Type
1	A	184	GLN
1	A	219	ASN
1	B	0	HIS
1	B	184	GLN
1	B	219	ASN

### 5.3.3 RNA [i](#)

There are no RNA molecules in this entry.

### 5.4 Non-standard residues in protein, DNA, RNA chains [i](#)

There are no non-standard protein/DNA/RNA residues in this entry.

### 5.5 Carbohydrates [i](#)

There are no oligosaccharides in this entry.

### 5.6 Ligand geometry [i](#)

2 ligands are modelled in this entry.

In the following table, the Counts columns list the number of bonds (or angles) for which Mogul statistics could be retrieved, the number of bonds (or angles) that are observed in the model and the number of bonds (or angles) that are defined in the Chemical Component Dictionary. The Link column lists molecule types, if any, to which the group is linked. The Z score for a bond length (or angle) is the number of standard deviations the observed value is removed from the

expected value. A bond length (or angle) with  $|Z| > 2$  is considered an outlier worth inspection. RMSZ is the root-mean-square of all Z scores of the bond lengths (or angles).

Mol	Type	Chain	Res	Link	Bond lengths			Bond angles		
					Counts	RMSZ	$\# Z  > 2$	Counts	RMSZ	$\# Z  > 2$
2	AVO	B	401	-	16,16,16	1.23	2 (12%)	18,21,21	1.49	4 (22%)
2	AVO	A	401	-	16,16,16	1.24	1 (6%)	18,21,21	1.43	4 (22%)

In the following table, the Chirals column lists the number of chiral outliers, the number of chiral centers analysed, the number of these observed in the model and the number defined in the Chemical Component Dictionary. Similar counts are reported in the Torsion and Rings columns. '-' means no outliers of that kind were identified.

Mol	Type	Chain	Res	Link	Chirals	Torsions	Rings
2	AVO	B	401	-	-	9/12/19/19	0/2/2/2
2	AVO	A	401	-	-	7/12/19/19	0/2/2/2

All (3) bond length outliers are listed below:

Mol	Chain	Res	Type	Atoms	Z	Observed(Å)	Ideal(Å)
2	A	401	AVO	CAH-N	-2.38	1.41	1.47
2	B	401	AVO	CAH-N	-2.36	1.41	1.47
2	B	401	AVO	CE1-ND1	2.14	1.38	1.35

The worst 5 of 8 bond angle outliers are listed below:

Mol	Chain	Res	Type	Atoms	Z	Observed(°)	Ideal(°)
2	B	401	AVO	CAH-N-CA	-2.40	109.52	114.55
2	B	401	AVO	CAH-N-CAG	2.22	109.95	104.92
2	B	401	AVO	CAF-CAH-N	2.21	107.88	104.17
2	A	401	AVO	CAH-N-CAG	2.15	109.79	104.92
2	A	401	AVO	CAF-CAH-N	2.15	107.77	104.17

There are no chirality outliers.

5 of 16 torsion outliers are listed below:

Mol	Chain	Res	Type	Atoms
2	A	401	AVO	C-CA-N-CAG
2	A	401	AVO	CB-CA-N-CAH
2	B	401	AVO	C-CA-N-CAG
2	B	401	AVO	CB-CA-N-CAH
2	B	401	AVO	OXT-C-CA-CB

There are no ring outliers.

No monomer is involved in short contacts.

## 5.7 Other polymers

There are no such residues in this entry.

## 5.8 Polymer linkage issues

There are no chain breaks in this entry.

## 6 Fit of model and data [i](#)

### 6.1 Protein, DNA and RNA chains [i](#)

In the following table, the column labelled ‘#RSRZ > 2’ contains the number (and percentage) of RSRZ outliers, followed by percent RSRZ outliers for the chain as percentile scores relative to all X-ray entries and entries of similar resolution. The OWAB column contains the minimum, median, 95<sup>th</sup> percentile and maximum values of the occupancy-weighted average B-factor per residue. The column labelled ‘Q < 0.9’ lists the number of (and percentage) of residues with an average occupancy less than 0.9.

Mol	Chain	Analysed	<RSRZ>	#RSRZ>2	OWAB(Å <sup>2</sup> )	Q<0.9
1	A	322/323 (99%)	-0.12	8 (2%) 58 62	18, 40, 67, 177	5 (1%)
1	B	323/323 (100%)	-0.08	13 (4%) 42 45	19, 41, 78, 110	1 (0%)
All	All	645/646 (99%)	-0.10	21 (3%) 49 52	18, 41, 71, 177	6 (0%)

The worst 5 of 21 RSRZ outliers are listed below:

Mol	Chain	Res	Type	RSRZ
1	B	142	PHE	6.1
1	A	87	SER	5.7
1	A	0	HIS	4.8
1	A	86	GLY	4.7
1	B	87	SER	4.4

### 6.2 Non-standard residues in protein, DNA, RNA chains [i](#)

There are no non-standard protein/DNA/RNA residues in this entry.

### 6.3 Carbohydrates [i](#)

There are no oligosaccharides in this entry.

### 6.4 Ligands [i](#)

In the following table, the Atoms column lists the number of modelled atoms in the group and the number defined in the chemical component dictionary. The B-factors column lists the minimum, median, 95<sup>th</sup> percentile and maximum values of B factors of atoms in the group. The column labelled ‘Q < 0.9’ lists the number of atoms with occupancy less than 0.9.

Mol	Type	Chain	Res	Atoms	RSCC	RSR	B-factors( $\text{\AA}^2$ )	Q<0.9
2	AVO	A	401	15/15	0.96	0.07	23,33,63,64	0
2	AVO	B	401	15/15	0.96	0.07	28,38,68,71	0

## 6.5 Other polymers [i](#)

There are no such residues in this entry.