



# wwPDB X-ray Structure Validation Summary Report ⓘ

Mar 4, 2026 – 08:16 PM UTC

PDB ID : 6FS3 / pdb\_00006fs3  
Title : Phosphotriesterase PTE\_A53\_1  
Authors : Dym, O.; Aggarwal, N.; Albeck, S.; Unger, T.; Hamer Rogotner, S.; Silman, I.; Leader, H.; Ashani, Y.; Goldsmith, M.; Greisen, P.; Tawfik, D.; Sussman, L.J.  
Deposited on : 2018-02-19  
Resolution : 1.75 Å(reported)

This is a wwPDB X-ray Structure Validation Summary Report for a publicly released PDB entry.

We welcome your comments at [validation@mail.wwpdb.org](mailto:validation@mail.wwpdb.org)

A user guide is available at

<https://www.wwpdb.org/validation/2017/XrayValidationReportHelp>

with specific help available everywhere you see the ⓘ symbol.

The types of validation reports are described at

<http://www.wwpdb.org/validation/2017/FAQs#types>.

---

The following versions of software and data (see [references ⓘ](#)) were used in the production of this report:

MolProbity : 4-5-2 with Phenix2.0  
Mogul : 2022.3.0, CSD as543be (2022)  
Xtriage (Phenix) : 2.0  
EDS : 3.0  
Percentile statistics : 20250101.v01 (using entries in the PDB archive January 1st 2025)  
CCP4 : 9.0.010 (Gargrove)  
Density-Fitness : 1.0.12  
Ideal geometry (proteins) : Engh & Huber (2001)  
Ideal geometry (DNA, RNA) : Parkinson et al. (1996)  
Validation Pipeline (wwPDB-VP) : 2.49

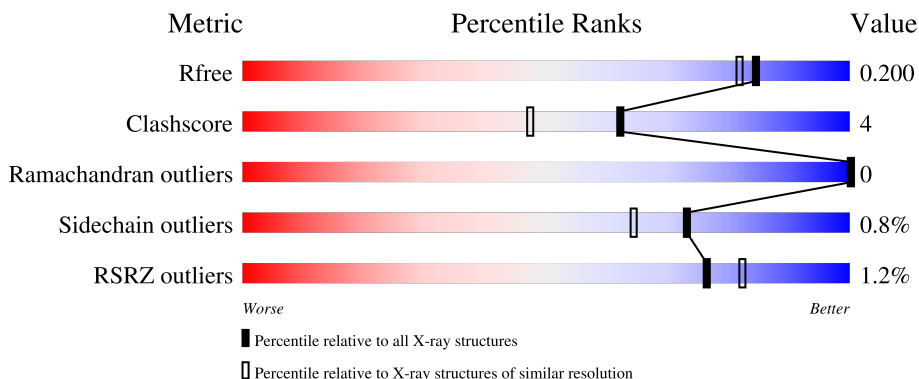
# 1 Overall quality at a glance

The following experimental techniques were used to determine the structure:

*X-RAY DIFFRACTION*

The reported resolution of this entry is 1.75 Å.

Percentile scores (ranging between 0-100) for global validation metrics of the entry are shown in the following graphic. The table shows the number of entries on which the scores are based.



Metric	Whole archive (#Entries)	Similar resolution (#Entries, resolution range(Å))
$R_{free}$	180053	3183 (1.76-1.76)
Clashscore	190562	3299 (1.76-1.76)
Ramachandran outliers	187476	3274 (1.76-1.76)
Sidechain outliers	187428	3274 (1.76-1.76)
RSRZ outliers	180081	3183 (1.76-1.76)

The table below summarises the geometric issues observed across the polymeric chains and their fit to the electron density. The red, orange, yellow and green segments of the lower bar indicate the fraction of residues that contain outliers for  $\geq 3$ , 2, 1 and 0 types of geometric quality criteria respectively. A grey segment represents the fraction of residues that are not modelled. The numeric value for each fraction is indicated below the corresponding segment, with a dot representing fractions  $\leq 5\%$ . The upper red bar (where present) indicates the fraction of residues that have poor fit to the electron density. The numeric value is given above the bar.

Mol	Chain	Length	Quality of chain
1	A	339	 89% 6% . .
1	B	339	 93% . .

The following table lists non-polymeric compounds, carbohydrate monomers and non-standard residues in protein, DNA, RNA chains that are outliers for geometric or electron-density-fit criteria:

Mol	Type	Chain	Res	Chirality	Geometry	Clashes	Electron density
2	FMT	A	401	-	-	X	-
2	FMT	B	401	-	-	X	-
4	9ON	A	404	X	-	-	-
4	9ON	B	404	X	X	-	-

## 2 Entry composition [i](#)

There are 5 unique types of molecules in this entry. The entry contains 5518 atoms, of which 0 are hydrogens and 0 are deuteriums.

In the tables below, the ZeroOcc column contains the number of atoms modelled with zero occupancy, the AltConf column contains the number of residues with at least one atom in alternate conformation and the Trace column contains the number of residues modelled with at most 2 atoms.

- Molecule 1 is a protein called Parathion hydrolase.

Mol	Chain	Residues	Atoms					ZeroOcc	AltConf	Trace
			Total	C	N	O	S			
1	A	327	2500	1578	444	471	7	0	3	0
1	B	331	2517	1589	443	478	7	0	2	0

There are 34 discrepancies between the modelled and reference sequences:

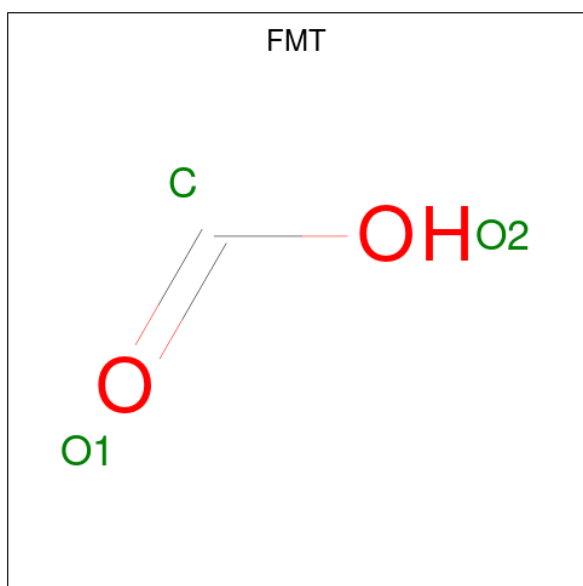
Chain	Residue	Modelled	Actual	Comment	Reference
A	27	ILE	-	expression tag	UNP P0A434
A	28	SER	-	expression tag	UNP P0A434
A	29	GLU	-	expression tag	UNP P0A434
A	30	PHE	-	expression tag	UNP P0A434
A	31	THR	-	expression tag	UNP P0A434
A	32	ASN	GLY	conflict	UNP P0A434
A	33	SER	THR	conflict	UNP P0A434
A	77	ALA	LYS	conflict	UNP P0A434
A	80	VAL	ALA	conflict	UNP P0A434
A	106	ALA	ILE	conflict	UNP P0A434
A	132	GLU	PHE	conflict	UNP P0A434
A	173	GLN	THR	conflict	UNP P0A434
A	185	ARG	LYS	conflict	UNP P0A434
A	203	PHE	ALA	conflict	UNP P0A434
A	254	GLY	HIS	conflict	UNP P0A434
A	274	ASN	ILE	conflict	UNP P0A434
A	319	SER	ARG	conflict	UNP P0A434
B	27	ILE	-	expression tag	UNP P0A434
B	28	SER	-	expression tag	UNP P0A434
B	29	GLU	-	expression tag	UNP P0A434
B	30	PHE	-	expression tag	UNP P0A434
B	31	THR	-	expression tag	UNP P0A434
B	32	ASN	GLY	conflict	UNP P0A434
B	33	SER	THR	conflict	UNP P0A434
B	77	ALA	LYS	conflict	UNP P0A434

*Continued on next page...*

Continued from previous page...

Chain	Residue	Modelled	Actual	Comment	Reference
B	80	VAL	ALA	conflict	UNP P0A434
B	106	ALA	ILE	conflict	UNP P0A434
B	132	GLU	PHE	conflict	UNP P0A434
B	173	GLN	THR	conflict	UNP P0A434
B	185	ARG	LYS	conflict	UNP P0A434
B	203	PHE	ALA	conflict	UNP P0A434
B	254	GLY	HIS	conflict	UNP P0A434
B	274	ASN	ILE	conflict	UNP P0A434
B	319	SER	ARG	conflict	UNP P0A434

- Molecule 2 is FORMIC ACID (CCD ID: FMT) (formula: CH<sub>2</sub>O<sub>2</sub>).

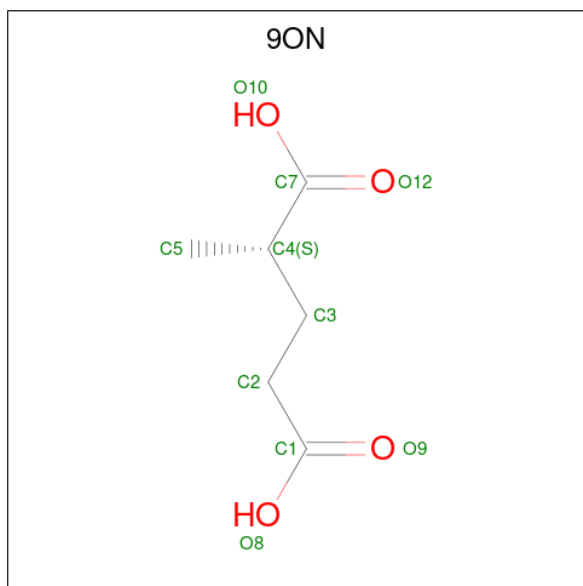


Mol	Chain	Residues	Atoms	ZeroOcc	AltConf
2	A	1	Total	0	0
			C O		
2	B	1	Total	0	0
			C O		

- Molecule 3 is ZINC ION (CCD ID: ZN) (formula: Zn).

Mol	Chain	Residues	Atoms	ZeroOcc	AltConf
3	A	2	Total	0	0
			Zn		
3	B	2	Total	0	0
			Zn		

- Molecule 4 is (2 {S})-2-methylpentanedioic acid (CCD ID: 9ON) (formula: C<sub>6</sub>H<sub>10</sub>O<sub>4</sub>).



Mol	Chain	Residues	Atoms	ZeroOcc	AltConf
4	A	1	Total C O 10 6 4	0	0
4	B	1	Total C O 10 6 4	0	0

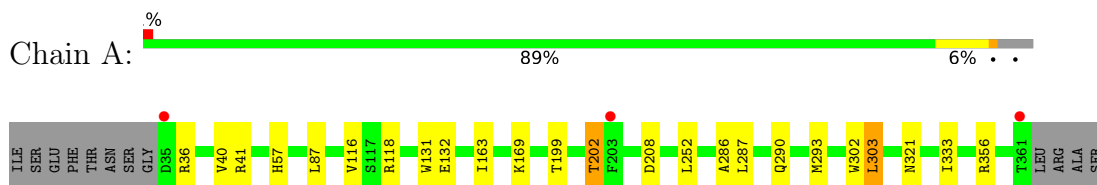
- Molecule 5 is water.

Mol	Chain	Residues	Atoms	ZeroOcc	AltConf
5	A	255	Total O 255 255	0	0
5	B	216	Total O 216 216	0	0

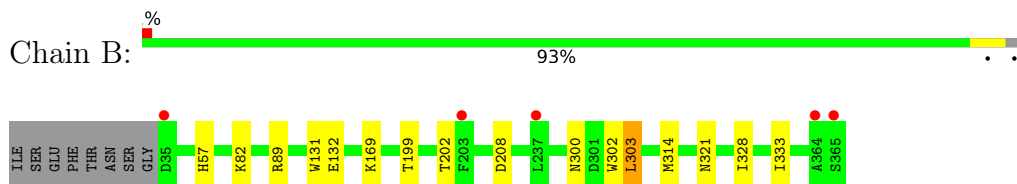
### 3 Residue-property plots [i](#)

These plots are drawn for all protein, RNA, DNA and oligosaccharide chains in the entry. The first graphic for a chain summarises the proportions of the various outlier classes displayed in the second graphic. The second graphic shows the sequence view annotated by issues in geometry and electron density. Residues are color-coded according to the number of geometric quality criteria for which they contain at least one outlier: green = 0, yellow = 1, orange = 2 and red = 3 or more. A red dot above a residue indicates a poor fit to the electron density ( $RSRZ > 2$ ). Stretches of 2 or more consecutive residues without any outlier are shown as a green connector. Residues present in the sample, but not in the model, are shown in grey.

- Molecule 1: Parathion hydrolase



- Molecule 1: Parathion hydrolase



## 4 Data and refinement statistics

Property	Value	Source
Space group	P 1 21 1	Depositor
Cell constants a, b, c, $\alpha$ , $\beta$ , $\gamma$	54.47Å 81.46Å 70.71Å 90.00° 95.12° 90.00°	Depositor
Resolution (Å)	23.48 – 1.75 23.48 – 1.75	Depositor EDS
% Data completeness (in resolution range)	99.8 (23.48-1.75) 99.7 (23.48-1.75)	Depositor EDS
$R_{merge}$	0.05	Depositor
$R_{sym}$	(Not available)	Depositor
$\langle I/\sigma(I) \rangle$ <sup>1</sup>	2.32 (at 1.75Å)	Xtrriage
Refinement program	PHENIX (1.11.1_2575: ???)	Depositor
R, $R_{free}$	0.167 , 0.201 0.167 , 0.200	Depositor DCC
$R_{free}$ test set	3050 reflections (4.92%)	wwPDB-VP
Wilson B-factor (Å <sup>2</sup> )	16.0	Xtrriage
Anisotropy	1.000	Xtrriage
Bulk solvent $k_{sol}$ (e/Å <sup>3</sup> ), $B_{sol}$ (Å <sup>2</sup> )	0.39 , 36.9	EDS
L-test for twinning <sup>2</sup>	$\langle  L  \rangle = 0.50$ , $\langle L^2 \rangle = 0.34$	Xtrriage
Estimated twinning fraction	No twinning to report.	Xtrriage
$F_o, F_c$ correlation	0.96	EDS
Total number of atoms	5518	wwPDB-VP
Average B, all atoms (Å <sup>2</sup> )	18.0	wwPDB-VP

Xtrriage's analysis on translational NCS is as follows: *The largest off-origin peak in the Patterson function is 5.50% of the height of the origin peak. No significant pseudotranslation is detected.*

<sup>1</sup>Intensities estimated from amplitudes.

<sup>2</sup>Theoretical values of  $\langle |L| \rangle$ ,  $\langle L^2 \rangle$  for acentric reflections are 0.5, 0.333 respectively for untwinned datasets, and 0.375, 0.2 for perfectly twinned datasets.

## 5 Model quality [i](#)

### 5.1 Standard geometry [i](#)

Bond lengths and bond angles in the following residue types are not validated in this section: ZN, 9ON, FMT

The Z score for a bond length (or angle) is the number of standard deviations the observed value is removed from the expected value. A bond length (or angle) with  $|Z| > 5$  is considered an outlier worth inspection. RMSZ is the root-mean-square of all Z scores of the bond lengths (or angles).

Mol	Chain	Bond lengths		Bond angles	
		RMSZ	# Z  >5	RMSZ	# Z  >5
1	A	0.30	0/2547	0.51	0/3462
1	B	0.28	0/2564	0.50	0/3485
All	All	0.29	0/5111	0.51	0/6947

Chiral center outliers are detected by calculating the chiral volume of a chiral center and verifying if the center is modelled as a planar moiety or with the opposite hand. A planarity outlier is detected by checking planarity of atoms in a peptide group, atoms in a mainchain group or atoms of a sidechain that are expected to be planar.

Mol	Chain	#Chirality outliers	#Planarity outliers
1	A	0	1

There are no bond length outliers.

There are no bond angle outliers.

There are no chirality outliers.

All (1) planarity outliers are listed below:

Mol	Chain	Res	Type	Group
1	A	202	THR	Peptide

### 5.2 Too-close contacts [i](#)

In the following table, the Non-H and H(model) columns list the number of non-hydrogen atoms and hydrogen atoms in the chain respectively. The H(added) column lists the number of hydrogen atoms added and optimized by MolProbity. The Clashes column lists the number of clashes within the asymmetric unit, whereas Symm-Clashes lists symmetry-related clashes.

Mol	Chain	Non-H	H(model)	H(added)	Clashes	Symm-Clashes
1	A	2500	0	2495	24	0
1	B	2517	0	2512	16	0
2	A	3	0	1	7	0
2	B	3	0	1	6	0
3	A	2	0	0	0	0
3	B	2	0	0	0	0
4	A	10	0	0	1	0
4	B	10	0	0	1	0
5	A	255	0	0	2	0
5	B	216	0	0	2	0
All	All	5518	0	5009	41	0

The all-atom clashscore is defined as the number of clashes found per 1000 atoms (including hydrogen atoms). The all-atom clashscore for this structure is 4.

The worst 5 of 41 close contacts within the same asymmetric unit are listed below, sorted by their clash magnitude.

Atom-1	Atom-2	Interatomic distance (Å)	Clash overlap (Å)
1:A:169:LYS:NZ	2:A:401:FMT:H	1.18	1.44
1:B:169:LYS:NZ	2:B:401:FMT:H	1.34	1.37
1:B:169:LYS:NZ	2:B:401:FMT:C	1.89	1.35
1:A:169:LYS:NZ	2:A:401:FMT:C	1.91	1.32
1:B:169:LYS:HZ1	2:B:401:FMT:C	1.44	1.21

There are no symmetry-related clashes.

## 5.3 Torsion angles [i](#)

### 5.3.1 Protein backbone [i](#)

In the following table, the Percentiles column shows the percent Ramachandran outliers of the chain as a percentile score with respect to all X-ray entries followed by that with respect to entries of similar resolution.

The Analysed column shows the number of residues for which the backbone conformation was analysed, and the total number of residues.

Mol	Chain	Analysed	Favoured	Allowed	Outliers	Percentiles	
1	A	328/339 (97%)	320 (98%)	8 (2%)	0	100	100
1	B	331/339 (98%)	323 (98%)	8 (2%)	0	100	100
All	All	659/678 (97%)	643 (98%)	16 (2%)	0	100	100

There are no Ramachandran outliers to report.

### 5.3.2 Protein sidechains [i](#)

In the following table, the Percentiles column shows the percent sidechain outliers of the chain as a percentile score with respect to all X-ray entries followed by that with respect to entries of similar resolution.

The Analysed column shows the number of residues for which the sidechain conformation was analysed, and the total number of residues.

Mol	Chain	Analysed	Rotameric	Outliers	Percentiles	
1	A	261/272 (96%)	259 (99%)	2 (1%)	73	64
1	B	263/272 (97%)	261 (99%)	2 (1%)	73	64
All	All	524/544 (96%)	520 (99%)	4 (1%)	73	64

All (4) residues with a non-rotameric sidechain are listed below:

Mol	Chain	Res	Type
1	A	303	LEU
1	A	333	ILE
1	B	303	LEU
1	B	333	ILE

Sometimes sidechains can be flipped to improve hydrogen bonding and reduce clashes. All (3) such sidechains are listed below:

Mol	Chain	Res	Type
1	A	343	GLN
1	B	206	GLN
1	B	343	GLN

### 5.3.3 RNA [i](#)

There are no RNA molecules in this entry.

## 5.4 Non-standard residues in protein, DNA, RNA chains [i](#)

There are no non-standard protein/DNA/RNA residues in this entry.

## 5.5 Carbohydrates [i](#)

There are no oligosaccharides in this entry.

## 5.6 Ligand geometry [i](#)

Of 8 ligands modelled in this entry, 4 are monoatomic - leaving 4 for Mogul analysis.

In the following table, the Counts columns list the number of bonds (or angles) for which Mogul statistics could be retrieved, the number of bonds (or angles) that are observed in the model and the number of bonds (or angles) that are defined in the Chemical Component Dictionary. The Link column lists molecule types, if any, to which the group is linked. The Z score for a bond length (or angle) is the number of standard deviations the observed value is removed from the expected value. A bond length (or angle) with  $|Z| > 2$  is considered an outlier worth inspection. RMSZ is the root-mean-square of all Z scores of the bond lengths (or angles).

Mol	Type	Chain	Res	Link	Bond lengths			Bond angles		
					Counts	RMSZ	# Z  > 2	Counts	RMSZ	# Z  > 2
2	FMT	A	401	3	2,2,2	0.54	0	1,1,1	0.69	0
4	9ON	B	404	3	9,9,9	2.47	5 (55%)	10,11,11	2.98	5 (50%)
2	FMT	B	401	3	2,2,2	0.81	0	1,1,1	0.68	0
4	9ON	A	404	3	9,9,9	1.86	1 (11%)	10,11,11	3.05	4 (40%)

In the following table, the Chirals column lists the number of chiral outliers, the number of chiral centers analysed, the number of these observed in the model and the number defined in the Chemical Component Dictionary. Similar counts are reported in the Torsion and Rings columns. '-' means no outliers of that kind were identified.

Mol	Type	Chain	Res	Link	Chirals	Torsions	Rings
4	9ON	B	404	3	1/1/3/3	4/9/9/9	-
4	9ON	A	404	3	1/1/3/3	1/9/9/9	-

The worst 5 of 6 bond length outliers are listed below:

Mol	Chain	Res	Type	Atoms	Z	Observed(Å)	Ideal(Å)
4	A	404	9ON	C4-C7	-4.86	1.37	1.51
4	B	404	9ON	O9-C1	3.52	1.33	1.22
4	B	404	9ON	O12-C7	3.48	1.32	1.22
4	B	404	9ON	O10-C7	-3.08	1.20	1.30
4	B	404	9ON	C4-C7	-3.06	1.43	1.51

The worst 5 of 9 bond angle outliers are listed below:

Mol	Chain	Res	Type	Atoms	Z	Observed(°)	Ideal(°)
4	A	404	9ON	C5-C4-C3	8.30	132.23	111.29
4	B	404	9ON	C5-C4-C3	6.10	126.69	111.29
4	B	404	9ON	O8-C1-C2	3.72	125.76	114.00
4	B	404	9ON	O9-C1-C2	-3.30	112.64	123.09
4	B	404	9ON	C3-C2-C1	3.21	121.06	112.49

All (2) chirality outliers are listed below:

Mol	Chain	Res	Type	Atom
4	A	404	9ON	C4
4	B	404	9ON	C4

All (5) torsion outliers are listed below:

Mol	Chain	Res	Type	Atoms
4	A	404	9ON	C2-C3-C4-C7
4	B	404	9ON	C2-C3-C4-C7
4	B	404	9ON	C2-C3-C4-C5
4	B	404	9ON	C3-C4-C7-O12
4	B	404	9ON	C3-C4-C7-O10

There are no ring outliers.

4 monomers are involved in 15 short contacts:

Mol	Chain	Res	Type	Clashes	Symm-Clashes
2	A	401	FMT	7	0
4	B	404	9ON	1	0
2	B	401	FMT	6	0
4	A	404	9ON	1	0

## 5.7 Other polymers [i](#)

There are no such residues in this entry.

## 5.8 Polymer linkage issues [i](#)

There are no chain breaks in this entry.

## 6 Fit of model and data [i](#)

### 6.1 Protein, DNA and RNA chains [i](#)

In the following table, the column labelled ‘#RSRZ> 2’ contains the number (and percentage) of RSRZ outliers, followed by percent RSRZ outliers for the chain as percentile scores relative to all X-ray entries and entries of similar resolution. The OWAB column contains the minimum, median, 95<sup>th</sup> percentile and maximum values of the occupancy-weighted average B-factor per residue. The column labelled ‘Q< 0.9’ lists the number of (and percentage) of residues with an average occupancy less than 0.9.

Mol	Chain	Analysed	<RSRZ>	#RSRZ>2	OWAB(Å <sup>2</sup> )	Q<0.9
1	A	327/339 (96%)	-0.35	3 (0%) 81 86	7, 16, 26, 53	3 (0%)
1	B	331/339 (97%)	-0.19	5 (1%) 72 78	9, 18, 29, 52	2 (0%)
All	All	658/678 (97%)	-0.27	8 (1%) 76 82	7, 17, 28, 53	5 (0%)

The worst 5 of 8 RSRZ outliers are listed below:

Mol	Chain	Res	Type	RSRZ
1	B	365	SER	3.3
1	B	203	PHE	3.2
1	A	361	THR	2.9
1	B	35	ASP	2.9
1	A	203	PHE	2.5

### 6.2 Non-standard residues in protein, DNA, RNA chains [i](#)

There are no non-standard protein/DNA/RNA residues in this entry.

### 6.3 Carbohydrates [i](#)

There are no oligosaccharides in this entry.

### 6.4 Ligands [i](#)

In the following table, the Atoms column lists the number of modelled atoms in the group and the number defined in the chemical component dictionary. The B-factors column lists the minimum, median, 95<sup>th</sup> percentile and maximum values of B factors of atoms in the group. The column labelled ‘Q< 0.9’ lists the number of atoms with occupancy less than 0.9.

Mol	Type	Chain	Res	Atoms	RSCC	RSR	B-factors( $\text{\AA}^2$ )	Q<0.9
2	FMT	B	401	3/3	0.90	0.09	16,16,17,18	0
4	9ON	A	404	10/10	0.91	0.12	12,22,28,38	0
2	FMT	A	401	3/3	0.92	0.08	12,12,12,13	0
4	9ON	B	404	10/10	0.92	0.12	17,28,39,45	0
3	ZN	A	402	1/1	0.99	0.03	12,12,12,12	0
3	ZN	B	402	1/1	0.99	0.03	15,15,15,15	0
3	ZN	A	403	1/1	1.00	0.01	12,12,12,12	0
3	ZN	B	403	1/1	1.00	0.06	17,17,17,17	0

## 6.5 Other polymers [i](#)

There are no such residues in this entry.