



wwPDB X-ray Structure Validation Summary Report ⓘ

Mar 6, 2026 – 03:30 AM UTC

PDB ID : 4FT4 / pdb_00004ft4
Title : crystal structure of Zea mays ZMET2 in complex H3(1-32)K9me2 peptide and SAH
Authors : Du, J.; Patel, D.J.
Deposited on : 2012-06-27
Resolution : 2.70 Å (reported)

This is a wwPDB X-ray Structure Validation Summary Report for a publicly released PDB entry.

We welcome your comments at validation@mail.wwpdb.org

A user guide is available at

<https://www.wwpdb.org/validation/2017/XrayValidationReportHelp>

with specific help available everywhere you see the ⓘ symbol.

The types of validation reports are described at

<http://www.wwpdb.org/validation/2017/FAQs#types>.

The following versions of software and data (see [references ⓘ](#)) were used in the production of this report:

MolProbity : 4-5-2 with Phenix2.0
Mogul : 2022.3.0, CSD as543be (2022)
Xtrriage (Phenix) : 2.0
EDS : 3.0
Buster-report : wwPDB partial adaption of 1.1.7 (2018)
Percentile statistics : 20250101.v01 (using entries in the PDB archive January 1st 2025)
CCP4 : 9.0.010 (Gargrove)
Density-Fitness : 1.0.12
Ideal geometry (proteins) : Engh & Huber (2001)
Ideal geometry (DNA, RNA) : Parkinson et al. (1996)
Validation Pipeline (wwPDB-VP) : 2.49

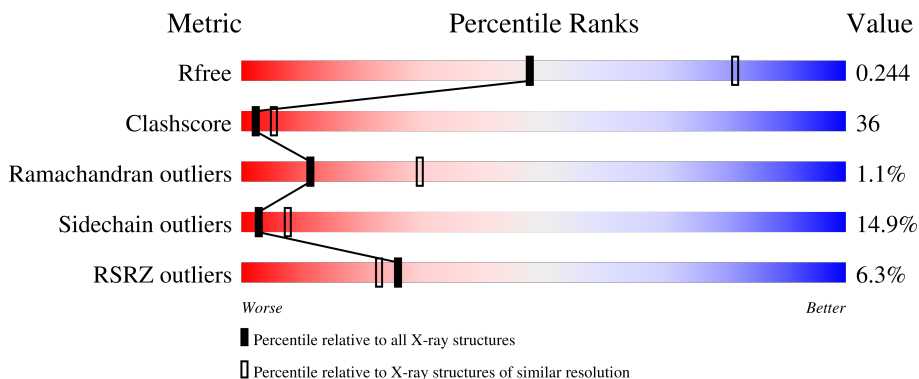
1 Overall quality at a glance

The following experimental techniques were used to determine the structure:

X-RAY DIFFRACTION

The reported resolution of this entry is 2.70 Å.

Percentile scores (ranging between 0-100) for global validation metrics of the entry are shown in the following graphic. The table shows the number of entries on which the scores are based.



Metric	Whole archive (#Entries)	Similar resolution (#Entries, resolution range(Å))
R_{free}	180053	3538 (2.70-2.70)
Clashscore	190562	3843 (2.70-2.70)
Ramachandran outliers	187476	3778 (2.70-2.70)
Sidechain outliers	187428	3778 (2.70-2.70)
RSRZ outliers	180081	3538 (2.70-2.70)

The table below summarises the geometric issues observed across the polymeric chains and their fit to the electron density. The red, orange, yellow and green segments of the lower bar indicate the fraction of residues that contain outliers for ≥ 3 , 2, 1 and 0 types of geometric quality criteria respectively. A grey segment represents the fraction of residues that are not modelled. The numeric value for each fraction is indicated below the corresponding segment, with a dot representing fractions $\leq 5\%$. The upper red bar (where present) indicates the fraction of residues that have poor fit to the electron density. The numeric value is given above the bar.

Mol	Chain	Length	Quality of chain
1	A	784	 8% 35% 41% 12% • 12%
1	B	784	 3% 57% 25% 6% • 12%
2	P	32	 9% 6% 12% • 78%
2	Q	32	 3% • 6% • 84%

The following table lists non-polymeric compounds, carbohydrate monomers and non-standard

residues in protein, DNA, RNA chains that are outliers for geometric or electron-density-fit criteria:

Mol	Type	Chain	Res	Chirality	Geometry	Clashes	Electron density
2	MLY	P	9	-	-	X	-

2 Entry composition

There are 4 unique types of molecules in this entry. The entry contains 11265 atoms, of which 0 are hydrogens and 0 are deuteriums.

In the tables below, the ZeroOcc column contains the number of atoms modelled with zero occupancy, the AltConf column contains the number of residues with at least one atom in alternate conformation and the Trace column contains the number of residues modelled with at most 2 atoms.

- Molecule 1 is a protein called DNA (cytosine-5)-methyltransferase 1.

Mol	Chain	Residues	Atoms					ZeroOcc	AltConf	Trace
			Total	C	N	O	S			
1	B	693	5514	3521	939	1021	33	0	0	0
1	A	688	5443	3476	931	1003	33	0	0	0

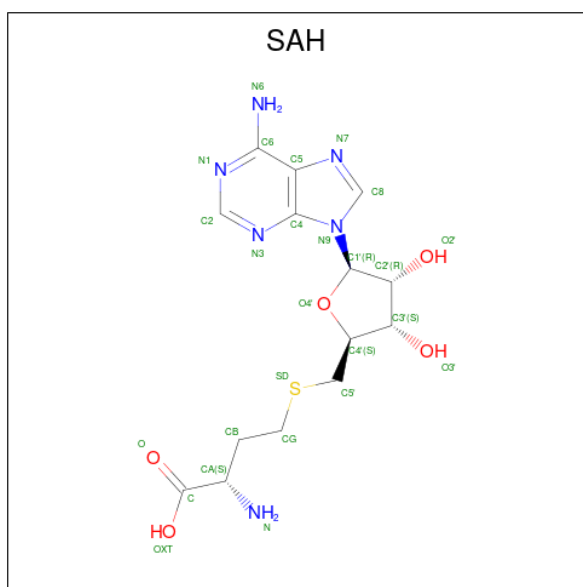
There are 2 discrepancies between the modelled and reference sequences:

Chain	Residue	Modelled	Actual	Comment	Reference
B	129	SER	-	expression tag	UNP Q9AXT8
A	129	SER	-	expression tag	UNP Q9AXT8

- Molecule 2 is a protein called H3(1-32)K9me2 peptide.

Mol	Chain	Residues	Atoms				ZeroOcc	AltConf	Trace
			Total	C	N	O			
2	P	7	56	33	12	11	0	0	0
2	Q	5	40	24	9	7	0	0	0

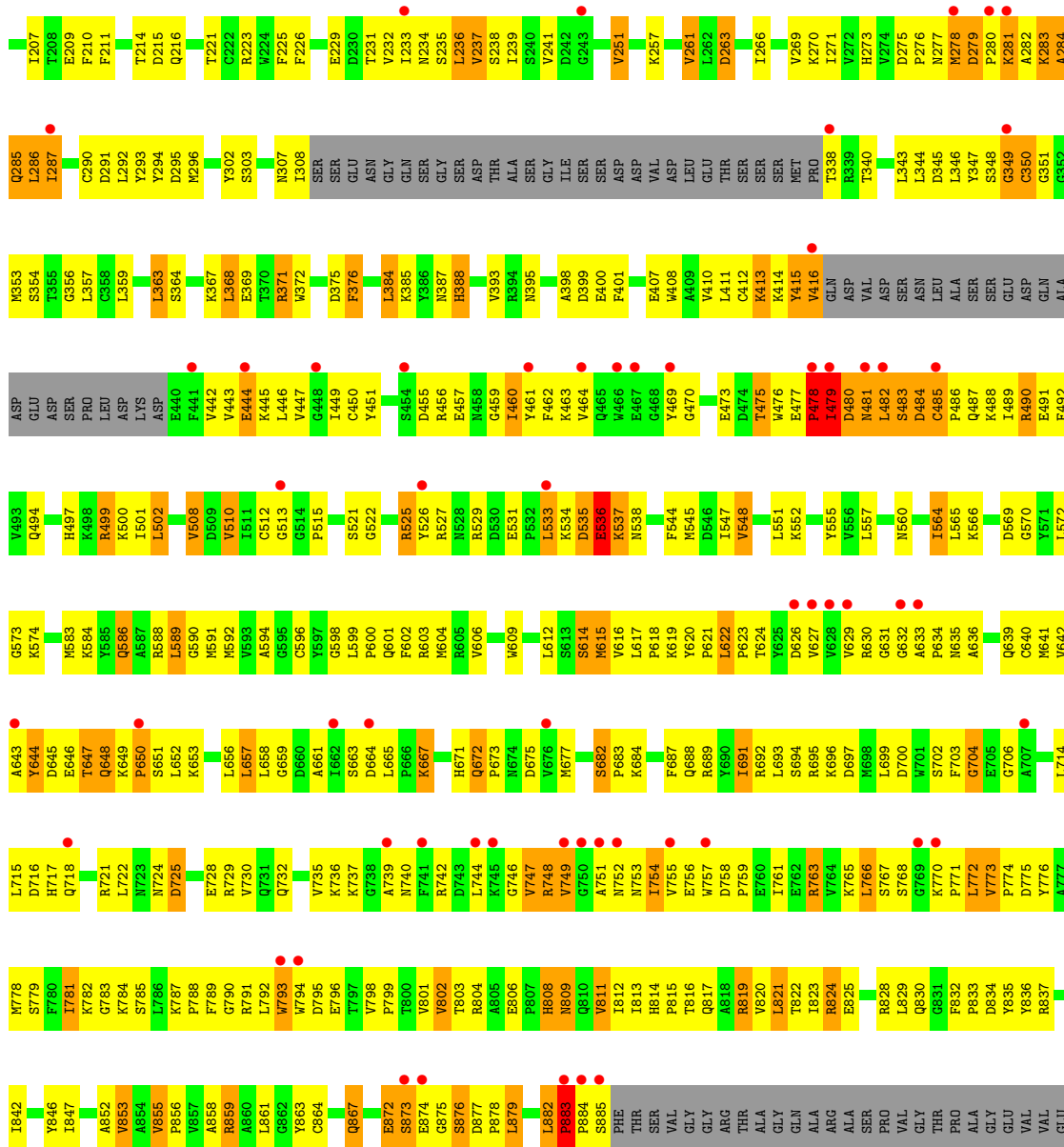
- Molecule 3 is S-ADENOSYL-L-HOMOCYSTEINE (CCD ID: SAH) (formula: C₁₄H₂₀N₆O₅S).



Mol	Chain	Residues	Atoms					ZeroOcc	AltConf
3	B	1	Total	C	N	O	S	0	0
			26	14	6	5	1		
3	A	1	Total	C	N	O	S	0	0
			26	14	6	5	1		

- Molecule 4 is water.

Mol	Chain	Residues	Atoms		ZeroOcc	AltConf
4	B	132	Total	O	0	0
			132	132		
4	A	27	Total	O	0	0
			27	27		
4	Q	1	Total	O	0	0
			1	1		



GLN

• Molecule 2: H3(1-32)K9me2 peptide



ALA ARG THR LYS LYS Q5 T6 A7 R8 K9 S10 T11 GLY LYS LYS LYS PRO PRO ARG ARG LYS LYS LYS LEU LEU ALA ALA THR THR LYS LYS ALA ALA ARG ARG LYS LYS SER SER PRO PRO ALA ALA THR PHE THR SER VAL ARG THR ALA GLY GLN ALA ARG ALA SER PRO VAL VAL THR PRO ALA ALA GLY GLU VAL VAL GLU

• Molecule 2: H3(1-32)K9me2 peptide



ALA	ARG	THR	LYS	GLN	T6	A7	R8	K9	S10	THR	GLY	GLY	LYS	ALA	PRO	ARG	LYS	GLN	LEU	ALA	ALA	LYS	THR	ALA	ALA	ARG	LYS	SER	SER	ALA	PRO	ALA	THR
-----	-----	-----	-----	-----	----	----	----	----	-----	-----	-----	-----	-----	-----	-----	-----	-----	-----	-----	-----	-----	-----	-----	-----	-----	-----	-----	-----	-----	-----	-----	-----	-----

4 Data and refinement statistics i

Property	Value	Source
Space group	P 1 21 1	Depositor
Cell constants a, b, c, α , β , γ	64.64Å 111.56Å 151.48Å 90.00° 101.98° 90.00°	Depositor
Resolution (Å)	43.82 – 2.70 43.82 – 2.70	Depositor EDS
% Data completeness (in resolution range)	98.4 (43.82-2.70) 98.5 (43.82-2.70)	Depositor EDS
R_{merge}	0.09	Depositor
R_{sym}	0.09	Depositor
$\langle I/\sigma(I) \rangle$ ¹	2.41 (at 2.69Å)	Xtrriage
Refinement program	PHENIX (phenix.refine: 1.7.1_743)	Depositor
R, R_{free}	0.206 , 0.248 0.200 , 0.244	Depositor DCC
R_{free} test set	2894 reflections (4.95%)	wwPDB-VP
Wilson B-factor (Å ²)	52.0	Xtrriage
Anisotropy	0.512	Xtrriage
Bulk solvent k_{sol} (e/Å ³), B_{sol} (Å ²)	0.33 , 63.1	EDS
L-test for twinning ²	$\langle L \rangle = 0.50$, $\langle L^2 \rangle = 0.33$	Xtrriage
Estimated twinning fraction	0.022 for h,-k,-h-l	Xtrriage
F_o, F_c correlation	0.94	EDS
Total number of atoms	11265	wwPDB-VP
Average B, all atoms (Å ²)	73.0	wwPDB-VP

Xtrriage's analysis on translational NCS is as follows: *The largest off-origin peak in the Patterson function is 4.18% of the height of the origin peak. No significant pseudotranslation is detected.*

¹Intensities estimated from amplitudes.

²Theoretical values of $\langle |L| \rangle$, $\langle L^2 \rangle$ for acentric reflections are 0.5, 0.333 respectively for untwinned datasets, and 0.375, 0.2 for perfectly twinned datasets.

5 Model quality [i](#)

5.1 Standard geometry [i](#)

Bond lengths and bond angles in the following residue types are not validated in this section: SAH, MLY

The Z score for a bond length (or angle) is the number of standard deviations the observed value is removed from the expected value. A bond length (or angle) with $|Z| > 5$ is considered an outlier worth inspection. RMSZ is the root-mean-square of all Z scores of the bond lengths (or angles).

Mol	Chain	Bond lengths		Bond angles	
		RMSZ	# Z >5	RMSZ	# Z >5
1	A	0.53	0/5577	0.96	36/7555 (0.5%)
1	B	0.59	0/5649	0.85	16/7650 (0.2%)
2	P	0.26	0/44	0.66	0/58
2	Q	0.24	0/28	1.12	1/36 (2.8%)
All	All	0.56	0/11298	0.91	53/15299 (0.3%)

Chiral center outliers are detected by calculating the chiral volume of a chiral center and verifying if the center is modelled as a planar moiety or with the opposite hand. A planarity outlier is detected by checking planarity of atoms in a peptide group, atoms in a mainchain group or atoms of a sidechain that are expected to be planar.

Mol	Chain	#Chirality outliers	#Planarity outliers
1	B	0	1

There are no bond length outliers.

The worst 5 of 53 bond angle outliers are listed below:

Mol	Chain	Res	Type	Atoms	Z	Observed(°)	Ideal(°)
1	B	538	ASN	N-CA-C	-11.44	98.85	112.92
1	A	483	SER	N-CA-C	-11.02	99.26	111.28
1	A	284	ALA	N-CA-C	-9.93	100.45	111.28
1	A	648	GLN	N-CA-C	9.92	121.92	108.23
1	A	538	ASN	N-CA-C	-9.73	99.22	112.94

There are no chirality outliers.

All (1) planarity outliers are listed below:

Mol	Chain	Res	Type	Group
1	B	875	GLY	Peptide

5.2 Too-close contacts [i](#)

In the following table, the Non-H and H(model) columns list the number of non-hydrogen atoms and hydrogen atoms in the chain respectively. The H(added) column lists the number of hydrogen atoms added and optimized by MolProbity. The Clashes column lists the number of clashes within the asymmetric unit, whereas Symm-Clashes lists symmetry-related clashes.

Mol	Chain	Non-H	H(model)	H(added)	Clashes	Symm-Clashes
1	A	5443	0	5326	536	0
1	B	5514	0	5427	237	0
2	P	56	0	59	11	0
2	Q	40	0	45	9	0
3	A	26	0	19	5	0
3	B	26	0	19	5	0
4	A	27	0	0	2	0
4	B	132	0	0	5	0
4	Q	1	0	0	0	0
All	All	11265	0	10895	784	0

The all-atom clashscore is defined as the number of clashes found per 1000 atoms (including hydrogen atoms). The all-atom clashscore for this structure is 36.

The worst 5 of 784 close contacts within the same asymmetric unit are listed below, sorted by their clash magnitude.

Atom-1	Atom-2	Interatomic distance (Å)	Clash overlap (Å)
1:A:483:SER:O	1:A:486:PRO:HD3	1.31	1.26
1:A:533:LEU:HD12	1:A:534:LYS:N	1.52	1.22
1:A:589:LEU:C	1:A:589:LEU:HD12	1.64	1.22
1:A:481:ASN:C	1:A:481:ASN:HD22	1.47	1.20
1:A:589:LEU:HD12	1:A:589:LEU:O	1.34	1.20

There are no symmetry-related clashes.

5.3 Torsion angles [i](#)

5.3.1 Protein backbone [i](#)

In the following table, the Percentiles column shows the percent Ramachandran outliers of the chain as a percentile score with respect to all X-ray entries followed by that with respect to entries of similar resolution.

The Analysed column shows the number of residues for which the backbone conformation was analysed, and the total number of residues.

Mol	Chain	Analysed	Favoured	Allowed	Outliers	Percentiles	
1	A	680/784 (87%)	631 (93%)	38 (6%)	11 (2%)	7	20
1	B	685/784 (87%)	660 (96%)	22 (3%)	3 (0%)	30	54
2	P	4/32 (12%)	4 (100%)	0	0	100	100
2	Q	2/32 (6%)	1 (50%)	0	1 (50%)	0	0
All	All	1371/1632 (84%)	1296 (94%)	60 (4%)	15 (1%)	11	29

5 of 15 Ramachandran outliers are listed below:

Mol	Chain	Res	Type
1	A	883	PRO
1	B	650	PRO
1	B	875	GLY
1	A	704	GLY
1	A	748	ARG

5.3.2 Protein sidechains [i](#)

In the following table, the Percentiles column shows the percent sidechain outliers of the chain as a percentile score with respect to all X-ray entries followed by that with respect to entries of similar resolution.

The Analysed column shows the number of residues for which the sidechain conformation was analysed, and the total number of residues.

Mol	Chain	Analysed	Rotameric	Outliers	Percentiles	
1	A	580/668 (87%)	474 (82%)	106 (18%)	2	5
1	B	596/668 (89%)	530 (89%)	66 (11%)	6	15
2	P	5/21 (24%)	3 (60%)	2 (40%)	0	0
2	Q	3/21 (14%)	1 (33%)	2 (67%)	0	0
All	All	1184/1378 (86%)	1008 (85%)	176 (15%)	3	8

5 of 176 residues with a non-rotameric sidechain are listed below:

Mol	Chain	Res	Type
1	A	502	LEU
1	A	747	VAL
1	A	533	LEU
1	A	644	TYR
1	A	772	LEU

Sometimes sidechains can be flipped to improve hydrogen bonding and reduce clashes. 5 of 11 such sidechains are listed below:

Mol	Chain	Res	Type
1	A	481	ASN
1	A	487	GLN
1	A	867	GLN
1	A	648	GLN
1	B	810	GLN

5.3.3 RNA [i](#)

There are no RNA molecules in this entry.

5.4 Non-standard residues in protein, DNA, RNA chains [i](#)

2 non-standard protein/DNA/RNA residues are modelled in this entry.

In the following table, the Counts columns list the number of bonds (or angles) for which Mogul statistics could be retrieved, the number of bonds (or angles) that are observed in the model and the number of bonds (or angles) that are defined in the Chemical Component Dictionary. The Link column lists molecule types, if any, to which the group is linked. The Z score for a bond length (or angle) is the number of standard deviations the observed value is removed from the expected value. A bond length (or angle) with $|Z| > 2$ is considered an outlier worth inspection. RMSZ is the root-mean-square of all Z scores of the bond lengths (or angles).

Mol	Type	Chain	Res	Link	Bond lengths			Bond angles		
					Counts	RMSZ	# Z > 2	Counts	RMSZ	# Z > 2
2	MLY	P	9	2	9,10,11	0.66	0	6,11,13	0.70	0
2	MLY	Q	9	2	9,10,11	0.73	0	6,11,13	1.63	1 (16%)

In the following table, the Chirals column lists the number of chiral outliers, the number of chiral centers analysed, the number of these observed in the model and the number defined in the Chemical Component Dictionary. Similar counts are reported in the Torsion and Rings columns. '-' means no outliers of that kind were identified.

Mol	Type	Chain	Res	Link	Chirals	Torsions	Rings
2	MLY	P	9	2	-	3/8/9/11	-
2	MLY	Q	9	2	-	4/8/9/11	-

There are no bond length outliers.

All (1) bond angle outliers are listed below:

Mol	Chain	Res	Type	Atoms	Z	Observed(°)	Ideal(°)
2	Q	9	MLY	CD-CE-NZ	-3.87	103.70	113.71

There are no chirality outliers.

5 of 7 torsion outliers are listed below:

Mol	Chain	Res	Type	Atoms
2	P	9	MLY	C-CA-CB-CG
2	Q	9	MLY	C-CA-CB-CG
2	P	9	MLY	CD-CE-NZ-CH2
2	Q	9	MLY	CD-CE-NZ-CH1
2	Q	9	MLY	CD-CE-NZ-CH2

There are no ring outliers.

1 monomer is involved in 7 short contacts:

Mol	Chain	Res	Type	Clashes	Symm-Clashes
2	P	9	MLY	7	0

5.5 Carbohydrates [i](#)

There are no oligosaccharides in this entry.

5.6 Ligand geometry [i](#)

2 ligands are modelled in this entry.

In the following table, the Counts columns list the number of bonds (or angles) for which Mogul statistics could be retrieved, the number of bonds (or angles) that are observed in the model and the number of bonds (or angles) that are defined in the Chemical Component Dictionary. The Link column lists molecule types, if any, to which the group is linked. The Z score for a bond length (or angle) is the number of standard deviations the observed value is removed from the expected value. A bond length (or angle) with $|Z| > 2$ is considered an outlier worth inspection. RMSZ is the root-mean-square of all Z scores of the bond lengths (or angles).

Mol	Type	Chain	Res	Link	Bond lengths			Bond angles		
					Counts	RMSZ	# Z > 2	Counts	RMSZ	# Z > 2
3	SAH	A	1000	-	27,28,28	1.45	4 (14%)	36,40,40	1.99	9 (25%)
3	SAH	B	1000	-	27,28,28	1.72	8 (29%)	36,40,40	4.49	21 (58%)

In the following table, the Chirals column lists the number of chiral outliers, the number of chiral centers analysed, the number of these observed in the model and the number defined in the

Chemical Component Dictionary. Similar counts are reported in the Torsion and Rings columns. '-' means no outliers of that kind were identified.

Mol	Type	Chain	Res	Link	Chirals	Torsions	Rings
3	SAH	A	1000	-	-	4/15/31/31	0/3/3/3
3	SAH	B	1000	-	-	2/15/31/31	0/3/3/3

The worst 5 of 12 bond length outliers are listed below:

Mol	Chain	Res	Type	Atoms	Z	Observed(Å)	Ideal(Å)
3	A	1000	SAH	C5-C4	4.69	1.47	1.39
3	B	1000	SAH	C2-N3	3.47	1.40	1.33
3	B	1000	SAH	C2-N1	3.23	1.39	1.33
3	B	1000	SAH	C5-C4	-3.12	1.33	1.39
3	B	1000	SAH	C5-N7	-3.07	1.33	1.39

The worst 5 of 30 bond angle outliers are listed below:

Mol	Chain	Res	Type	Atoms	Z	Observed(°)	Ideal(°)
3	B	1000	SAH	O4'-C1'-C2'	-15.36	73.74	106.62
3	B	1000	SAH	O4'-C4'-C5'	-12.34	77.06	108.83
3	B	1000	SAH	O4'-C4'-C3'	-7.45	90.36	105.15
3	B	1000	SAH	C5'-C4'-C3'	7.33	133.37	115.06
3	B	1000	SAH	N3-C2-N1	-6.78	118.31	128.58

There are no chirality outliers.

5 of 6 torsion outliers are listed below:

Mol	Chain	Res	Type	Atoms
3	B	1000	SAH	O4'-C4'-C5'-SD
3	A	1000	SAH	O4'-C4'-C5'-SD
3	A	1000	SAH	C3'-C4'-C5'-SD
3	B	1000	SAH	C2'-C1'-N9-C8
3	A	1000	SAH	C2'-C1'-N9-C8

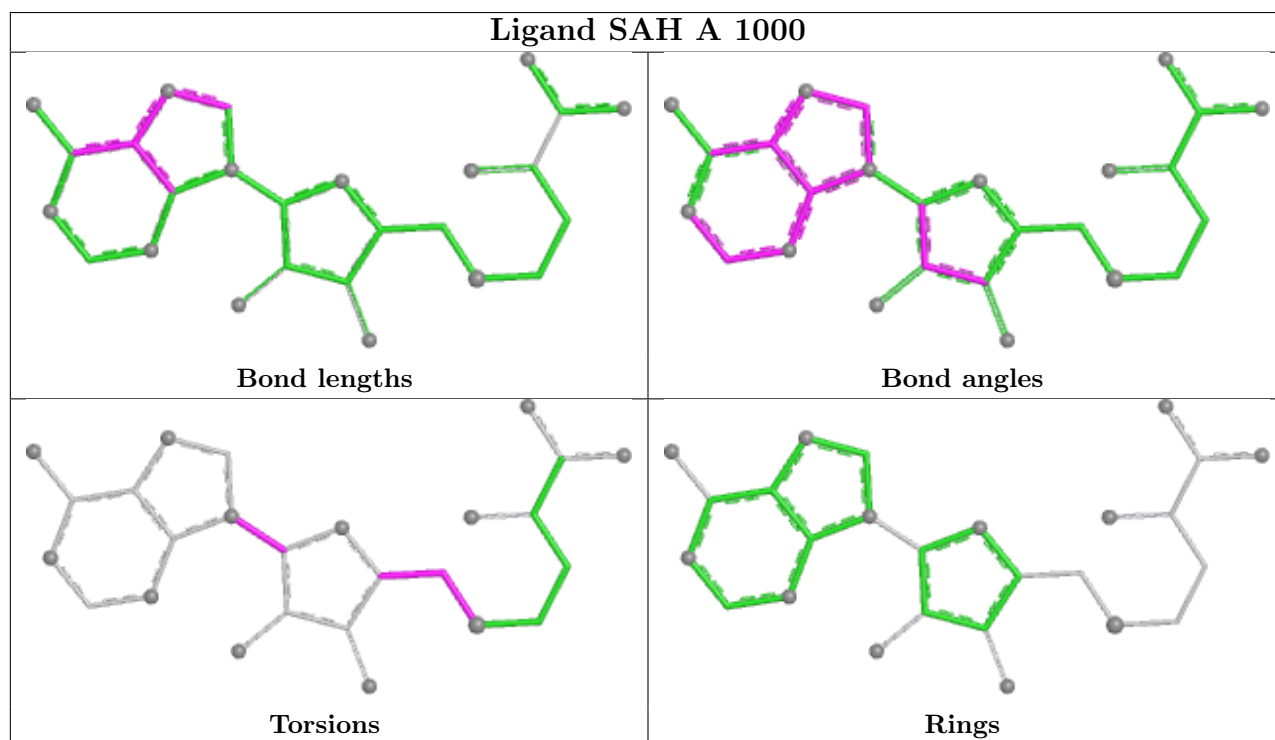
There are no ring outliers.

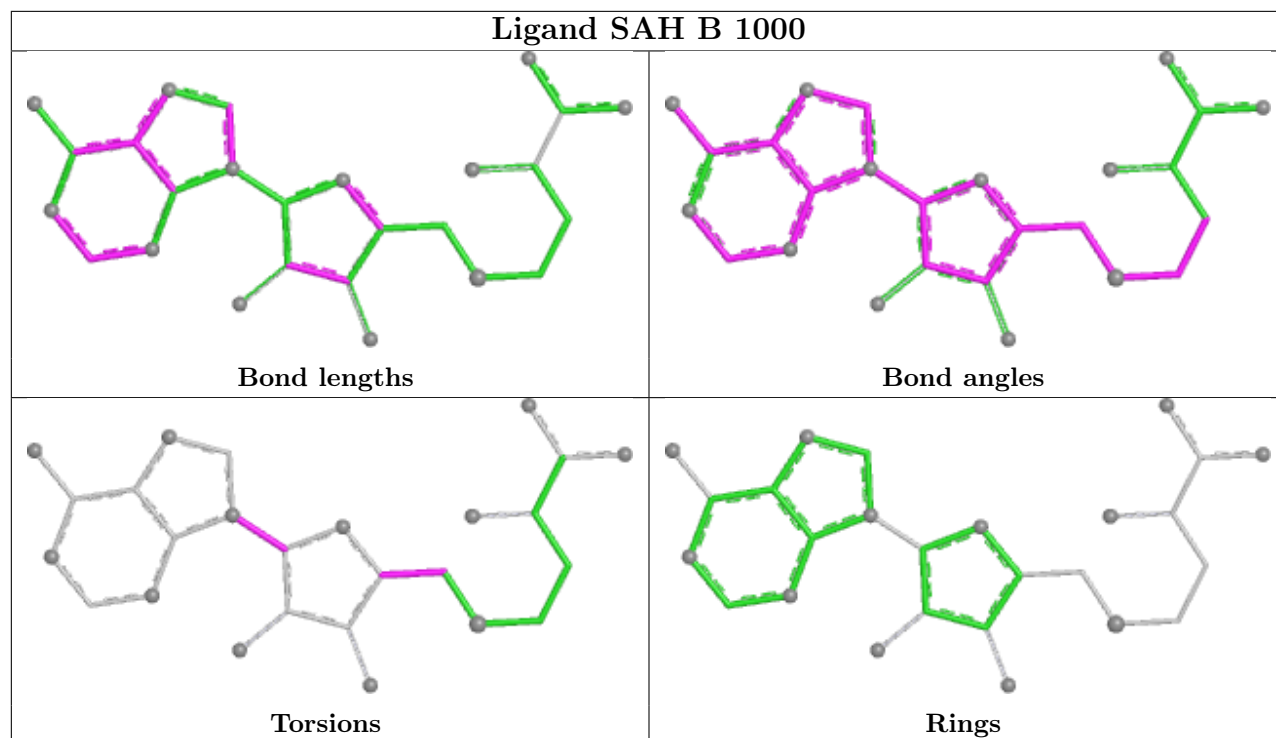
2 monomers are involved in 10 short contacts:

Mol	Chain	Res	Type	Clashes	Symm-Clashes
3	A	1000	SAH	5	0
3	B	1000	SAH	5	0

The following is a two-dimensional graphical depiction of Mogul quality analysis of bond lengths,

bond angles, torsion angles, and ring geometry for all instances of the Ligand of Interest. In addition, ligands with molecular weight > 250 and outliers as shown on the validation Tables will also be included. For torsion angles, if less than 5% of the Mogul distribution of torsion angles is within 10 degrees of the torsion angle in question, then that torsion angle is considered an outlier. Any bond that is central to one or more torsion angles identified as an outlier by Mogul will be highlighted in the graph. For rings, the root-mean-square deviation (RMSD) between the ring in question and similar rings identified by Mogul is calculated over all ring torsion angles. If the average RMSD is greater than 60 degrees and the minimal RMSD between the ring in question and any Mogul-identified rings is also greater than 60 degrees, then that ring is considered an outlier. The outliers are highlighted in purple. The color gray indicates Mogul did not find sufficient equivalents in the CSD to analyse the geometry.





5.7 Other polymers [i](#)

There are no such residues in this entry.

5.8 Polymer linkage issues [i](#)

There are no chain breaks in this entry.

6 Fit of model and data [i](#)

6.1 Protein, DNA and RNA chains [i](#)

In the following table, the column labelled ‘#RSRZ > 2’ contains the number (and percentage) of RSRZ outliers, followed by percent RSRZ outliers for the chain as percentile scores relative to all X-ray entries and entries of similar resolution. The OWAB column contains the minimum, median, 95th percentile and maximum values of the occupancy-weighted average B-factor per residue. The column labelled ‘Q < 0.9’ lists the number of (and percentage) of residues with an average occupancy less than 0.9.

Mol	Chain	Analysed	<RSRZ>	#RSRZ>2	OWAB(Å ²)	Q<0.9
1	A	688/784 (87%)	0.71	60 (8%) 16 13	56, 88, 149, 228	0
1	B	693/784 (88%)	-0.12	24 (3%) 47 43	24, 45, 106, 159	0
2	P	6/32 (18%)	1.99	3 (50%) 0 0	105, 130, 135, 135	0
2	Q	4/32 (12%)	2.47	1 (25%) 2 1	119, 128, 143, 164	0
All	All	1391/1632 (85%)	0.31	88 (6%) 26 23	24, 71, 137, 228	0

The worst 5 of 88 RSRZ outliers are listed below:

Mol	Chain	Res	Type	RSRZ
1	A	479	ILE	7.3
1	A	482	LEU	5.6
2	Q	6	THR	5.2
1	A	481	ASN	4.9
1	A	533	LEU	4.6

6.2 Non-standard residues in protein, DNA, RNA chains [i](#)

In the following table, the Atoms column lists the number of modelled atoms in the group and the number defined in the chemical component dictionary. The B-factors column lists the minimum, median, 95th percentile and maximum values of B factors of atoms in the group. The column labelled ‘Q < 0.9’ lists the number of atoms with occupancy less than 0.9.

Mol	Type	Chain	Res	Atoms	RSCC	RSR	B-factors(Å ²)	Q<0.9
2	MLY	Q	9	11/12	0.80	0.24	76,96,108,114	0
2	MLY	P	9	11/12	0.86	0.22	81,87,108,112	0

6.3 Carbohydrates [i](#)

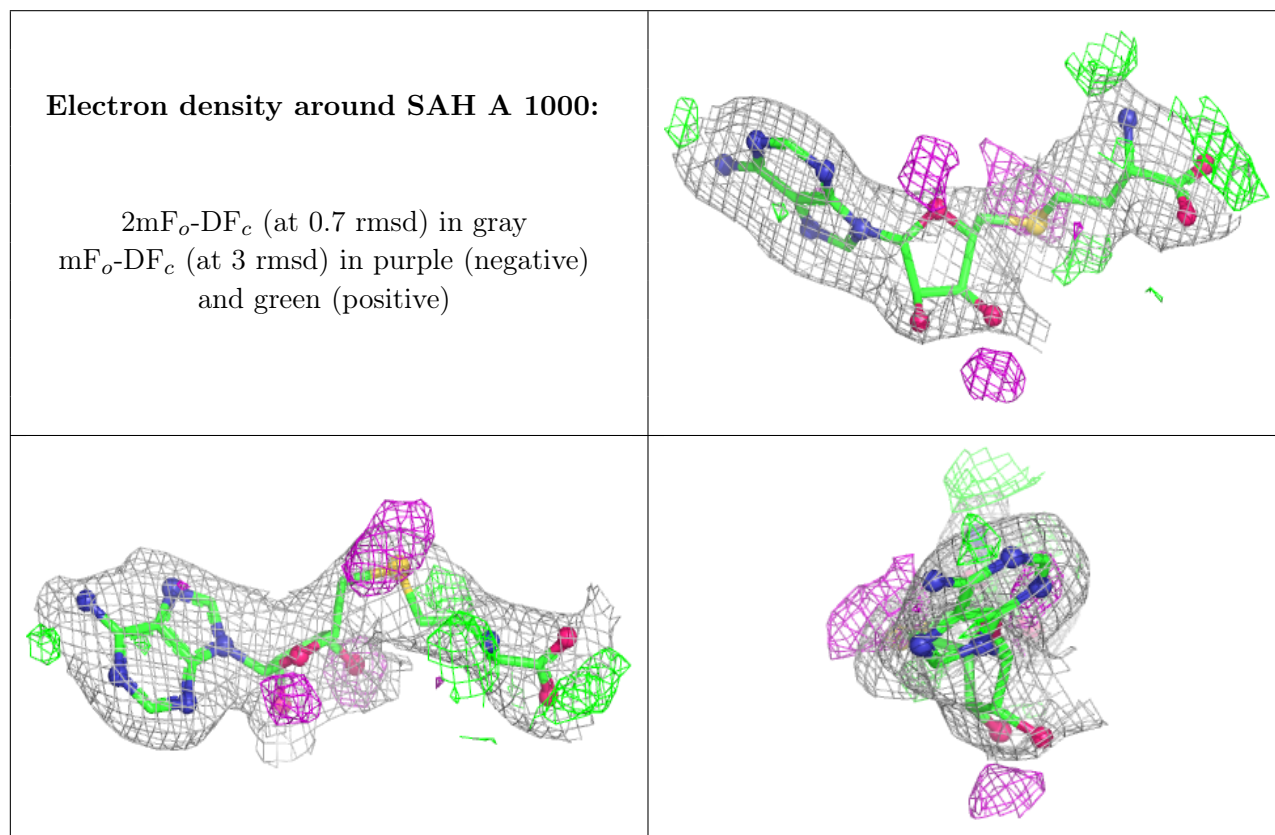
There are no oligosaccharides in this entry.

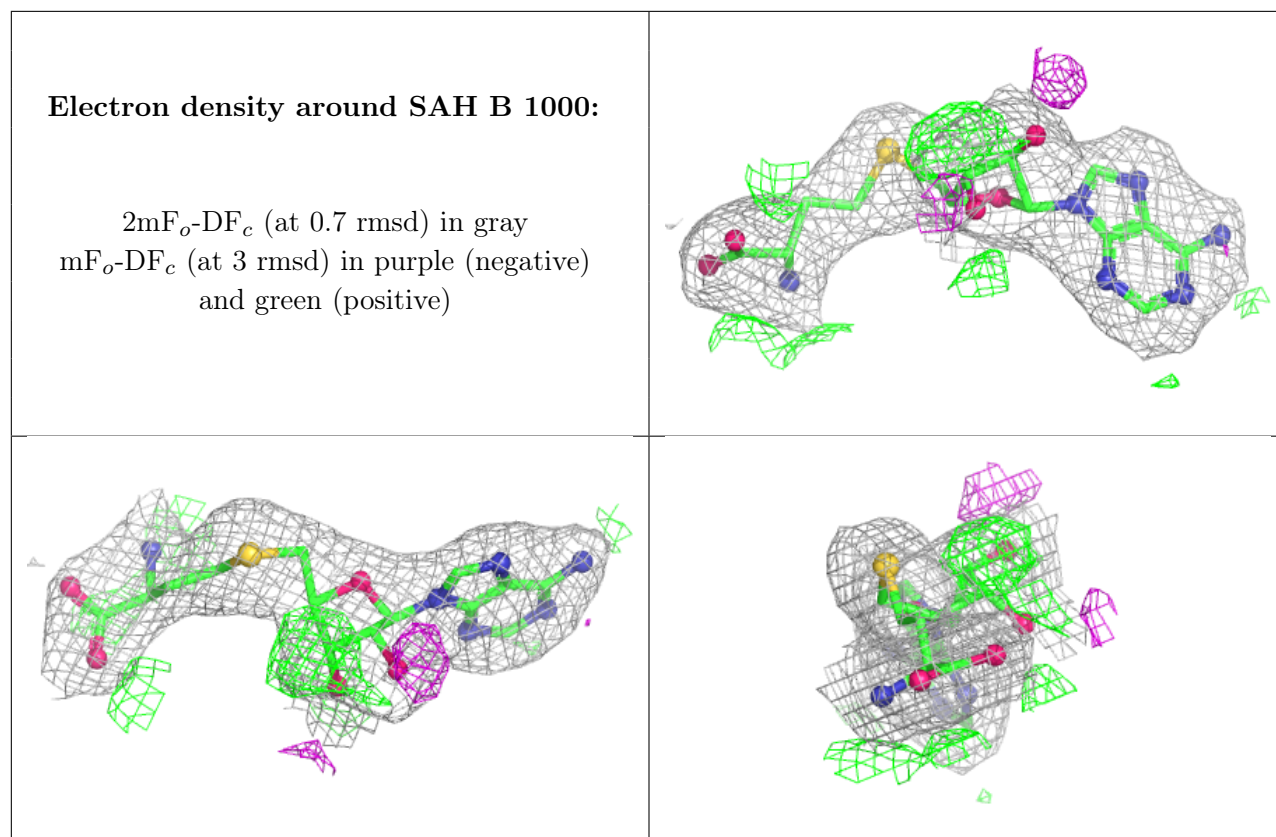
6.4 Ligands [i](#)

In the following table, the Atoms column lists the number of modelled atoms in the group and the number defined in the chemical component dictionary. The B-factors column lists the minimum, median, 95th percentile and maximum values of B factors of atoms in the group. The column labelled 'Q<0.9' lists the number of atoms with occupancy less than 0.9.

Mol	Type	Chain	Res	Atoms	RSCC	RSR	B-factors(Å ²)	Q<0.9
3	SAH	A	1000	26/26	0.86	0.14	36,63,83,93	0
3	SAH	B	1000	26/26	0.96	0.08	11,36,55,67	0

The following is a graphical depiction of the model fit to experimental electron density of all instances of the Ligand of Interest. In addition, ligands with molecular weight > 250 and outliers as shown on the geometry validation Tables will also be included. Each fit is shown from different orientation to approximate a three-dimensional view.





6.5 Other polymers [i](#)

There are no such residues in this entry.