



## Full wwPDB EM Validation Report ⓘ

Mar 24, 2026 – 10:21 AM UTC

PDB ID : 5FT2 / pdb\_00005ft2  
EMDB ID : EMD-3292  
Title : Sub-tomogram averaging of Lassa virus glycoprotein spike from virus- like particles at pH 5  
Authors : Li, S.; Zhaoyang, S.; Pryce, R.; Parsy, M.L.; Fehling, S.K.; Schlie, K.; Siebert, C.A.; Garten, W.; Bowden, T.A.; Strecker, T.; Huiskonen, J.T.  
Deposited on : 2016-01-09  
Resolution : 16.40 Å (reported)  
Based on initial model : 4ZJF

This is a Full wwPDB EM Validation Report for a publicly released PDB entry.

We welcome your comments at [validation@mail.wwpdb.org](mailto:validation@mail.wwpdb.org)

A user guide is available at

<https://www.wwpdb.org/validation/2017/EMValidationReportHelp>

with specific help available everywhere you see the ⓘ symbol.

The types of validation reports are described at

<http://www.wwpdb.org/validation/2017/FAQs#types>.

---

The following versions of software and data (see [references ⓘ](#)) were used in the production of this report:

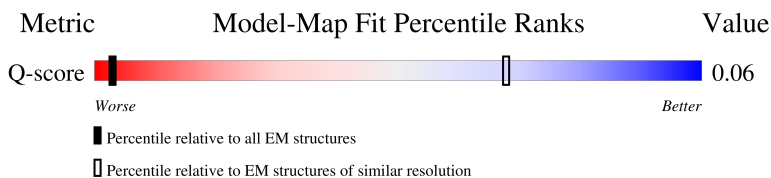
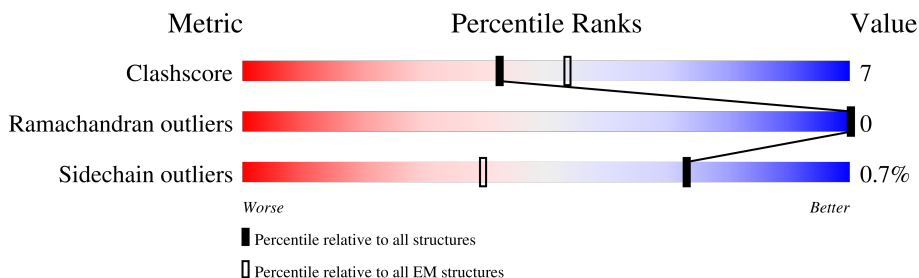
EMDB validation analysis : 0.0.1.dev132  
Mogul : 2022.3.0, CSD as543be (2022)  
MolProbity : 4-5-2 with Phenix2.0  
Percentile statistics : 20250101.v01 (using entries in the PDB archive January 1st 2025)  
EM percentile statistics : 202505.v01 (Using data in the EMDB archive up until May 2025)  
MapQ : 1.9.13  
Ideal geometry (proteins) : Engh & Huber (2001)  
Ideal geometry (DNA, RNA) : Parkinson et al. (1996)  
Validation Pipeline (wwPDB-VP) : 2.49

# 1 Overall quality at a glance i

The following experimental techniques were used to determine the structure:  
*ELECTRON MICROSCOPY*

The reported resolution of this entry is 16.40 Å.

Percentile scores (ranging between 0-100) for global validation metrics of the entry are shown in the following graphic. The table shows the number of entries on which the scores are based.



Metric	Whole archive (#Entries)	EM structures (#Entries)	Similar EM resolution (#Entries, resolution range(Å))
Clashscore	229148	23984	-
Ramachandran outliers	224038	23583	-
Sidechain outliers	223484	23102	-
Q-score	-	25397	37 ( 15.90 - 16.90 )

The table below summarises the geometric issues observed across the polymeric chains and their fit to the map. The red, orange, yellow and green segments of the bar indicate the fraction of residues that contain outliers for  $\geq 3$ , 2, 1 and 0 types of geometric quality criteria respectively. A grey segment represents the fraction of residues that are not modelled. The numeric value for each fraction is indicated below the corresponding segment, with a dot representing fractions  $\leq 5\%$ . The upper red bar (where present) indicates the fraction of residues that have poor fit to the EM map (all-atom inclusion  $< 40\%$ ). The numeric value is given above the bar.

Mol	Chain	Length	Quality of chain
1	B	172	<div style="display: flex; justify-content: space-between; align-items: center;"> <div style="text-align: center;">15%</div> <div style="width: 100%; height: 15px; background: linear-gradient(to right, red, orange, yellow, green, grey);"></div> <div style="text-align: center;">77%</div> <div style="text-align: center;">13%</div> <div style="text-align: center;">• 9%</div> </div>
2	A	2	<div style="display: flex; justify-content: space-between; align-items: center;"> <div style="text-align: center;">50%</div> <div style="width: 100%; height: 15px; background: linear-gradient(to right, red, orange, yellow, green);"></div> <div style="text-align: center;">50%</div> </div>
2	C	2	<div style="display: flex; justify-content: space-between; align-items: center;"> <div style="text-align: center;">50%</div> <div style="width: 100%; height: 15px; background: linear-gradient(to right, red, orange, yellow, green);"></div> <div style="text-align: center;">100%</div> </div>

## 2 Entry composition i

There are 4 unique types of molecules in this entry. The entry contains 1340 atoms, of which 0 are hydrogens and 0 are deuteriums.

In the tables below, the AltConf column contains the number of residues with at least one atom in alternate conformation and the Trace column contains the number of residues modelled with at most 2 atoms.

- Molecule 1 is a protein called PRE-GLYCOPROTEIN POLYPROTEIN GP COMPLEX.

Mol	Chain	Residues	Atoms					AltConf	Trace
			Total	C	N	O	S		
1	B	157	1233	770	213	237	13	0	0

There are 9 discrepancies between the modelled and reference sequences:

Chain	Residue	Modelled	Actual	Comment	Reference
B	66	SER	-	expression tag	UNP P08669
B	67	HIS	-	expression tag	UNP P08669
B	68	HIS	-	expression tag	UNP P08669
B	69	HIS	-	expression tag	UNP P08669
B	70	HIS	-	expression tag	UNP P08669
B	71	HIS	-	expression tag	UNP P08669
B	72	HIS	-	expression tag	UNP P08669
B	73	GLY	-	expression tag	UNP P08669
B	74	GLY	-	expression tag	UNP P08669

- Molecule 2 is an oligosaccharide called 2-acetamido-2-deoxy-beta-D-glucopyranose-(1-4)-2-acetamido-2-deoxy-beta-D-glucopyranose.



Mol	Chain	Residues	Atoms				AltConf	Trace
			Total	C	N	O		
2	A	2	28	16	2	10	0	0
2	C	2	28	16	2	10	0	0

- Molecule 3 is 2-acetamido-2-deoxy-beta-D-glucopyranose (CCD ID: NAG) (formula: C<sub>8</sub>H<sub>15</sub>NO<sub>6</sub>).



Mol	Chain	Residues	Atoms				AltConf
			Total	C	N	O	
3	B	1	14	8	1	5	0
3	B	1	14	8	1	5	0

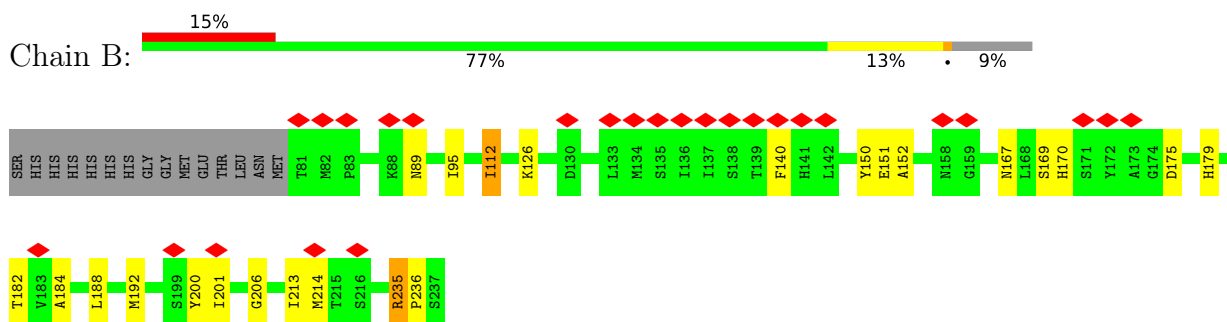
- Molecule 4 is water.

Mol	Chain	Residues	Atoms		AltConf
			Total	O	
4	B	23	23	23	0

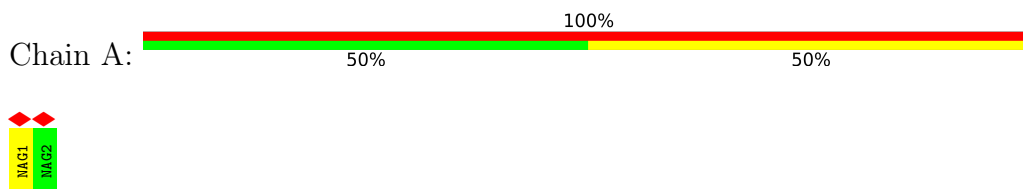
### 3 Residue-property plots [i](#)

These plots are drawn for all protein, RNA, DNA and oligosaccharide chains in the entry. The first graphic for a chain summarises the proportions of the various outlier classes displayed in the second graphic. The second graphic shows the sequence view annotated by issues in geometry and atom inclusion in map density. Residues are color-coded according to the number of geometric quality criteria for which they contain at least one outlier: green = 0, yellow = 1, orange = 2 and red = 3 or more. A red diamond above a residue indicates a poor fit to the EM map for this residue (all-atom inclusion < 40%). Stretches of 2 or more consecutive residues without any outlier are shown as a green connector. Residues present in the sample, but not in the model, are shown in grey.

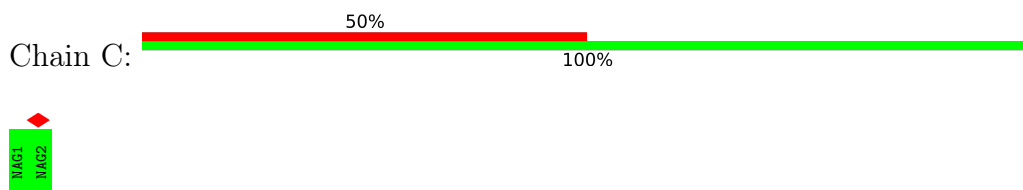
- Molecule 1: PRE-GLYCOPROTEIN POLYPROTEIN GP COMPLEX



- Molecule 2: 2-acetamido-2-deoxy-beta-D-glucopyranose-(1-4)-2-acetamido-2-deoxy-beta-D-glucopyranose



- Molecule 2: 2-acetamido-2-deoxy-beta-D-glucopyranose-(1-4)-2-acetamido-2-deoxy-beta-D-glucopyranose



## 4 Experimental information

Property	Value	Source
EM reconstruction method	TOMOGRAPHY	Depositor
Imposed symmetry	POINT, C3	Depositor
Number of tilted images used	2578	Depositor
Resolution determination method	Not provided	
CTF correction method	EACH TILTED IMAGE	Depositor
Microscope	FEI TECNAI F30	Depositor
Voltage (kV)	300	Depositor
Electron dose ( $e^-/\text{\AA}^2$ )	60	Depositor
Minimum defocus (nm)	2800	Depositor
Maximum defocus (nm)	6700	Depositor
Magnification	37037	Depositor
Image detector	GATAN K2 SUMMIT (4k x 4k)	Depositor
Maximum voxel value	5.335	Depositor
Minimum voxel value	-2.648	Depositor
Average voxel value	0.014	Depositor
Voxel value standard deviation	0.520	Depositor
Recommended contour level	1.26	Depositor
Tomogram size ( $\text{\AA}$ )	345.6, 345.6, 345.6	wwPDB
Tomogram dimensions	128, 128, 128	wwPDB
Tomogram angles ( $^\circ$ )	90.0, 90.0, 90.0	wwPDB
Grid spacing ( $\text{\AA}$ )	2.7, 2.7, 2.7	Depositor

## 5 Model quality [i](#)

### 5.1 Standard geometry [i](#)

Bond lengths and bond angles in the following residue types are not validated in this section: NAG

The Z score for a bond length (or angle) is the number of standard deviations the observed value is removed from the expected value. A bond length (or angle) with  $|Z| > 5$  is considered an outlier worth inspection. RMSZ is the root-mean-square of all Z scores of the bond lengths (or angles).

Mol	Chain	Bond lengths		Bond angles	
		RMSZ	# Z  >5	RMSZ	# Z  >5
1	B	0.30	0/1264	0.78	2/1713 (0.1%)

There are no bond length outliers.

All (2) bond angle outliers are listed below:

Mol	Chain	Res	Type	Atoms	Z	Observed(°)	Ideal(°)
1	B	235	ARG	CA-C-N	8.04	127.33	118.97
1	B	235	ARG	C-N-CA	8.04	127.33	118.97

There are no chirality outliers.

There are no planarity outliers.

### 5.2 Too-close contacts [i](#)

In the following table, the Non-H and H(model) columns list the number of non-hydrogen atoms and hydrogen atoms in the chain respectively. The H(added) column lists the number of hydrogen atoms added and optimized by MolProbity. The Clashes column lists the number of clashes within the asymmetric unit, whereas Symm-Clashes lists symmetry-related clashes.

Mol	Chain	Non-H	H(model)	H(added)	Clashes	Symm-Clashes
1	B	1233	0	1147	17	0
2	A	28	0	25	0	0
2	C	28	0	25	0	0
3	B	28	0	26	0	0
4	B	23	0	0	2	0
All	All	1340	0	1223	17	0

The all-atom clashscore is defined as the number of clashes found per 1000 atoms (including hydrogen atoms). The all-atom clashscore for this structure is 7.

All (17) close contacts within the same asymmetric unit are listed below, sorted by their clash magnitude.

Atom-1	Atom-2	Interatomic distance (Å)	Clash overlap (Å)
1:B:89:ASN:ND2	4:B:403:HOH:O	2.27	0.67
1:B:192:MET:HE2	1:B:200:TYR:HB2	1.84	0.59
1:B:151:GLU:HG3	1:B:184:ALA:HB3	1.87	0.56
1:B:206:GLY:N	4:B:407:HOH:O	2.38	0.56
1:B:201:ILE:HB	1:B:214:MET:HE3	1.89	0.54
1:B:151:GLU:OE2	1:B:170:HIS:NE2	2.37	0.53
1:B:169:SER:O	1:B:175:ASP:HB3	2.12	0.50
1:B:95:ILE:HD11	1:B:140:PHE:CZ	2.51	0.46
1:B:112:ILE:HD13	1:B:112:ILE:HA	1.76	0.45
1:B:188:LEU:HB3	1:B:213:ILE:HG21	1.99	0.44
1:B:192:MET:CE	1:B:200:TYR:HB2	2.48	0.42
1:B:235:ARG:HA	1:B:236:PRO:HD3	1.73	0.41
1:B:192:MET:CE	1:B:213:ILE:HD12	2.51	0.41
1:B:126:LYS:HB2	1:B:126:LYS:HE3	1.78	0.41
1:B:151:GLU:HG2	1:B:182:THR:HG21	2.03	0.40
1:B:152:ALA:HB3	1:B:167:ASN:HB2	2.03	0.40
1:B:150:TYR:O	1:B:179:HIS:HD2	2.04	0.40

There are no symmetry-related clashes.

## 5.3 Torsion angles [i](#)

### 5.3.1 Protein backbone [i](#)

In the following table, the Percentiles column shows the percent Ramachandran outliers of the chain as a percentile score with respect to all PDB entries followed by that with respect to all EM entries.

The Analysed column shows the number of residues for which the backbone conformation was analysed, and the total number of residues.

Mol	Chain	Analysed	Favoured	Allowed	Outliers	Percentiles
1	B	155/172 (90%)	151 (97%)	4 (3%)	0	<a href="#">100</a> <a href="#">100</a>

There are no Ramachandran outliers to report.

### 5.3.2 Protein sidechains [i](#)

In the following table, the Percentiles column shows the percent sidechain outliers of the chain as a percentile score with respect to all PDB entries followed by that with respect to all EM entries.

The Analysed column shows the number of residues for which the sidechain conformation was analysed, and the total number of residues.

Mol	Chain	Analysed	Rotameric	Outliers	Percentiles
1	B	137/150 (91%)	136 (99%)	1 (1%)	76 81

All (1) residues with a non-rotameric sidechain are listed below:

Mol	Chain	Res	Type
1	B	112	ILE

Sometimes sidechains can be flipped to improve hydrogen bonding and reduce clashes. All (1) such sidechains are listed below:

Mol	Chain	Res	Type
1	B	92	HIS

### 5.3.3 RNA [i](#)

There are no RNA molecules in this entry.

## 5.4 Non-standard residues in protein, DNA, RNA chains [i](#)

There are no non-standard protein/DNA/RNA residues in this entry.

## 5.5 Carbohydrates [i](#)

4 monosaccharides are modelled in this entry.

In the following table, the Counts columns list the number of bonds (or angles) for which Mogul statistics could be retrieved, the number of bonds (or angles) that are observed in the model and the number of bonds (or angles) that are defined in the Chemical Component Dictionary. The Link column lists molecule types, if any, to which the group is linked. The Z score for a bond length (or angle) is the number of standard deviations the observed value is removed from the expected value. A bond length (or angle) with  $|Z| > 2$  is considered an outlier worth inspection. RMSZ is the root-mean-square of all Z scores of the bond lengths (or angles).

Mol	Type	Chain	Res	Link	Bond lengths			Bond angles		
					Counts	RMSZ	# Z  > 2	Counts	RMSZ	# Z  > 2
2	NAG	A	1	2,1	14,14,15	0.87	1 (7%)	17,19,21	1.28	2 (11%)
2	NAG	A	2	2	14,14,15	0.37	0	17,19,21	0.54	0
2	NAG	C	1	2,1	14,14,15	0.33	0	17,19,21	0.51	0
2	NAG	C	2	2	14,14,15	0.31	0	17,19,21	0.51	0

In the following table, the Chirals column lists the number of chiral outliers, the number of chiral centers analysed, the number of these observed in the model and the number defined in the Chemical Component Dictionary. Similar counts are reported in the Torsion and Rings columns. '-' means no outliers of that kind were identified.

Mol	Type	Chain	Res	Link	Chirals	Torsions	Rings
2	NAG	A	1	2,1	-	0/6/23/26	0/1/1/1
2	NAG	A	2	2	-	1/6/23/26	0/1/1/1
2	NAG	C	1	2,1	-	2/6/23/26	0/1/1/1
2	NAG	C	2	2	-	2/6/23/26	0/1/1/1

All (1) bond length outliers are listed below:

Mol	Chain	Res	Type	Atoms	Z	Observed(Å)	Ideal(Å)
2	A	1	NAG	O5-C1	2.68	1.48	1.43

All (2) bond angle outliers are listed below:

Mol	Chain	Res	Type	Atoms	Z	Observed(°)	Ideal(°)
2	A	1	NAG	C1-O5-C5	3.58	116.99	112.19
2	A	1	NAG	O4-C4-C5	2.26	114.89	109.32

There are no chirality outliers.

All (5) torsion outliers are listed below:

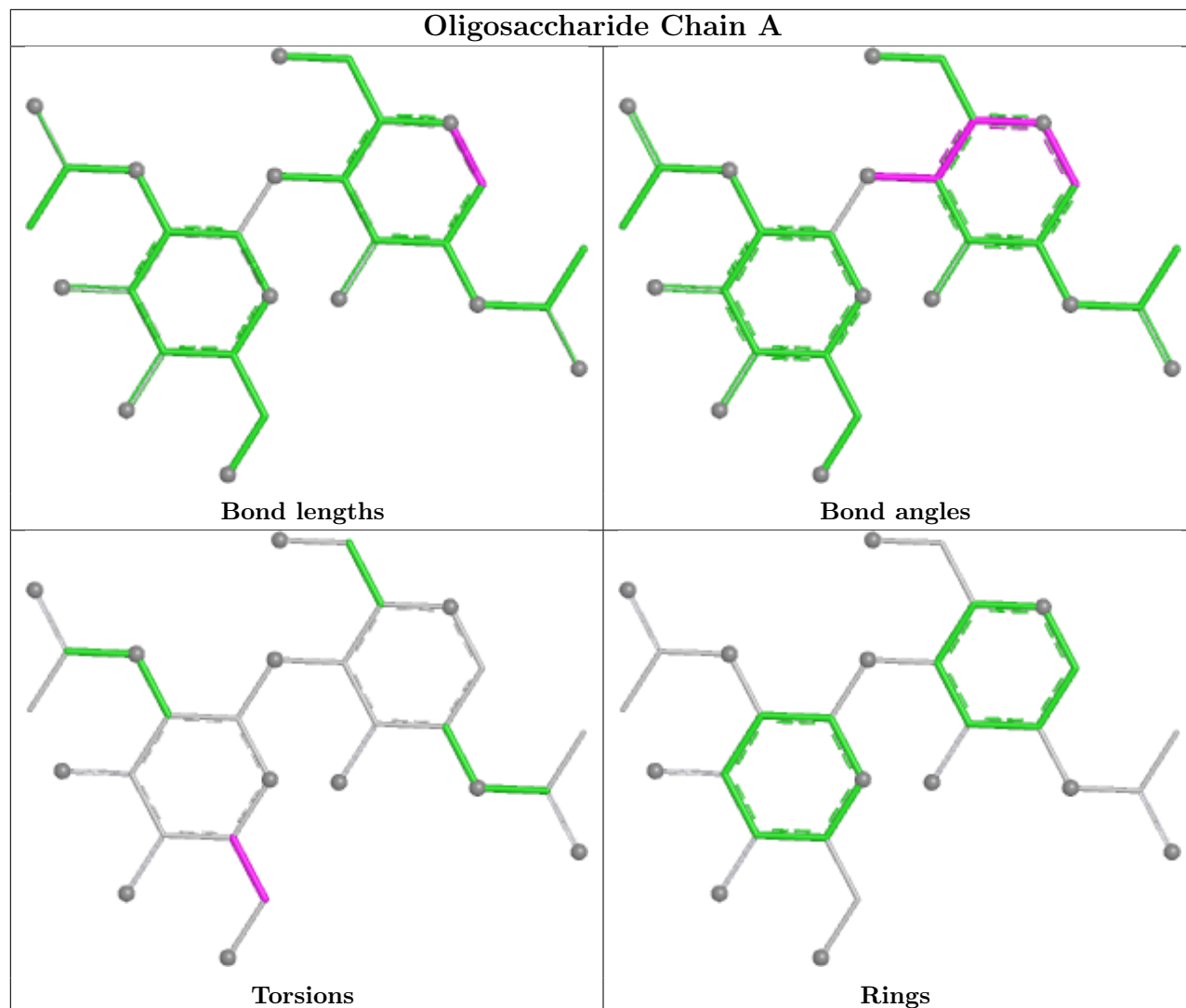
Mol	Chain	Res	Type	Atoms
2	C	2	NAG	O5-C5-C6-O6
2	C	2	NAG	C4-C5-C6-O6
2	C	1	NAG	O5-C5-C6-O6
2	C	1	NAG	C4-C5-C6-O6
2	A	2	NAG	C4-C5-C6-O6

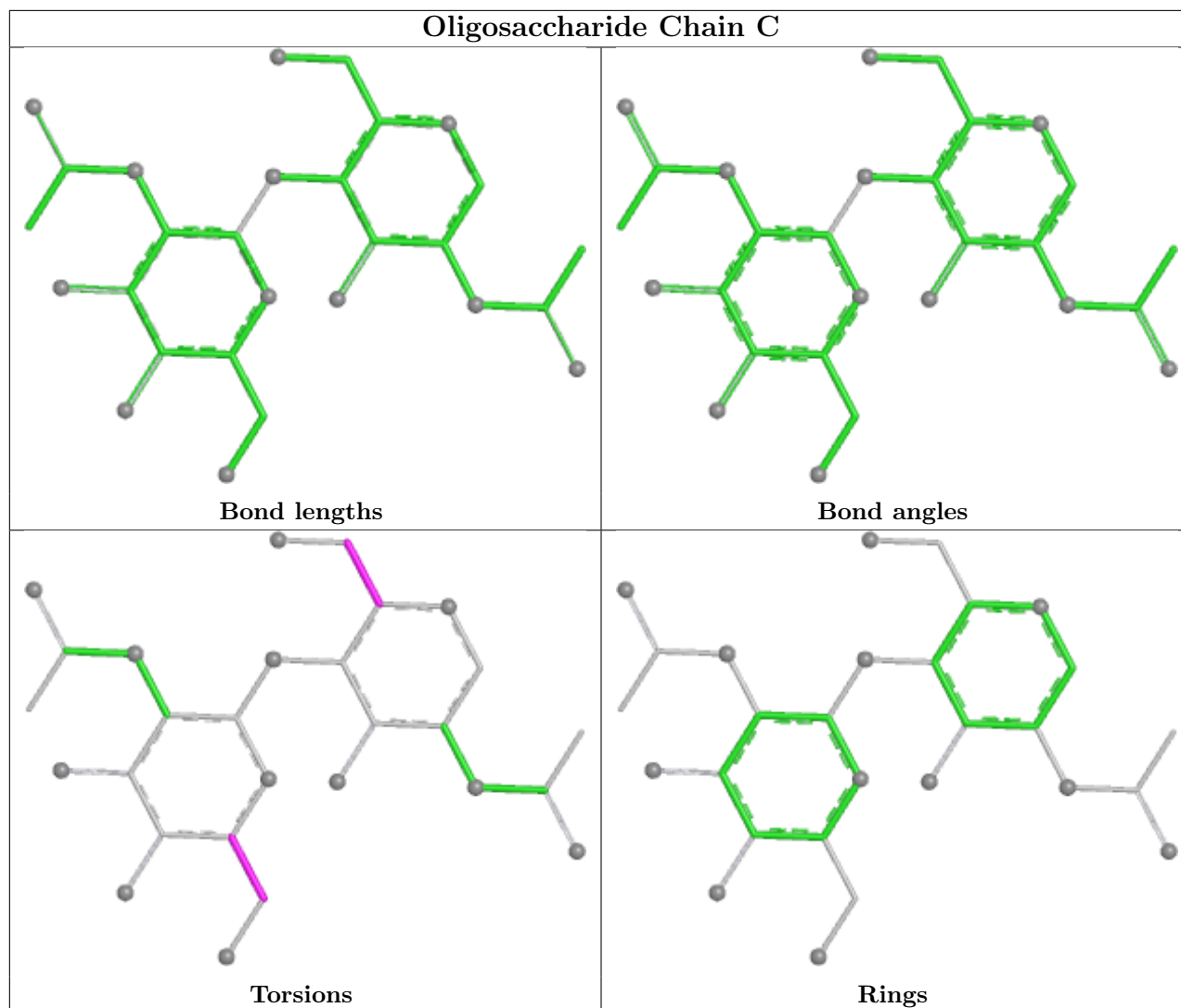
There are no ring outliers.

No monomer is involved in short contacts.

The following is a two-dimensional graphical depiction of Mogul quality analysis of bond lengths,

bond angles, torsion angles, and ring geometry for oligosaccharide.





## 5.6 Ligand geometry [i](#)

2 ligands are modelled in this entry.

In the following table, the Counts columns list the number of bonds (or angles) for which Mogul statistics could be retrieved, the number of bonds (or angles) that are observed in the model and the number of bonds (or angles) that are defined in the Chemical Component Dictionary. The Link column lists molecule types, if any, to which the group is linked. The Z score for a bond length (or angle) is the number of standard deviations the observed value is removed from the expected value. A bond length (or angle) with  $|Z| > 2$  is considered an outlier worth inspection. RMSZ is the root-mean-square of all Z scores of the bond lengths (or angles).

Mol	Type	Chain	Res	Link	Bond lengths			Bond angles		
					Counts	RMSZ	$\# Z  > 2$	Counts	RMSZ	$\# Z  > 2$
3	NAG	B	304	1	14,14,15	0.33	0	17,19,21	0.39	0
3	NAG	B	303	1	14,14,15	0.20	0	17,19,21	0.51	0

In the following table, the Chirals column lists the number of chiral outliers, the number of chiral centers analysed, the number of these observed in the model and the number defined in the Chemical Component Dictionary. Similar counts are reported in the Torsion and Rings columns. '-' means no outliers of that kind were identified.

Mol	Type	Chain	Res	Link	Chirals	Torsions	Rings
3	NAG	B	304	1	-	2/6/23/26	0/1/1/1
3	NAG	B	303	1	-	2/6/23/26	0/1/1/1

There are no bond length outliers.

There are no bond angle outliers.

There are no chirality outliers.

All (4) torsion outliers are listed below:

Mol	Chain	Res	Type	Atoms
3	B	304	NAG	O5-C5-C6-O6
3	B	304	NAG	C4-C5-C6-O6
3	B	303	NAG	O5-C5-C6-O6
3	B	303	NAG	C4-C5-C6-O6

There are no ring outliers.

No monomer is involved in short contacts.

## 5.7 Other polymers [i](#)

There are no such residues in this entry.

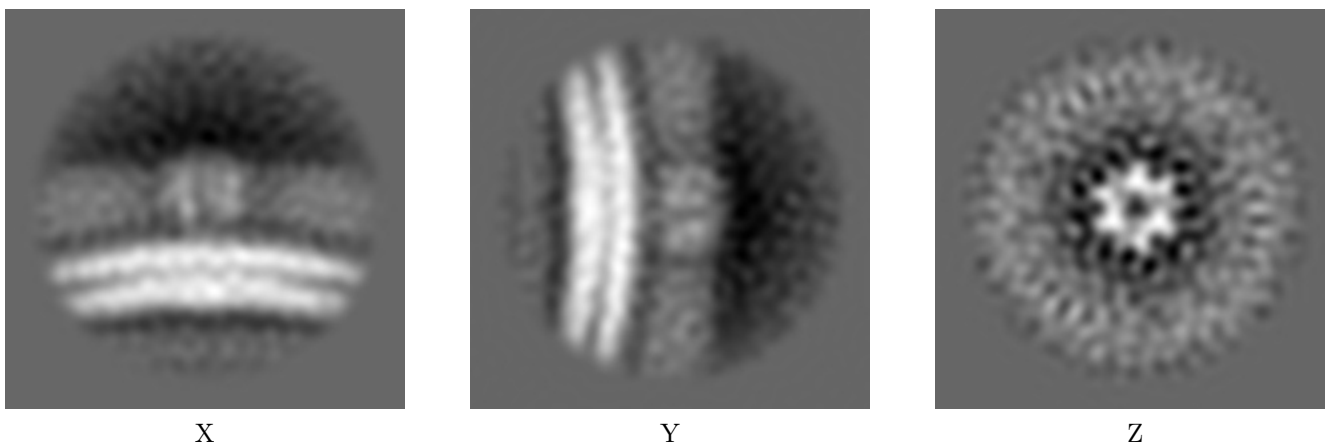
## 5.8 Polymer linkage issues [i](#)

There are no chain breaks in this entry.

## 6 Tomogram visualisation [i](#)

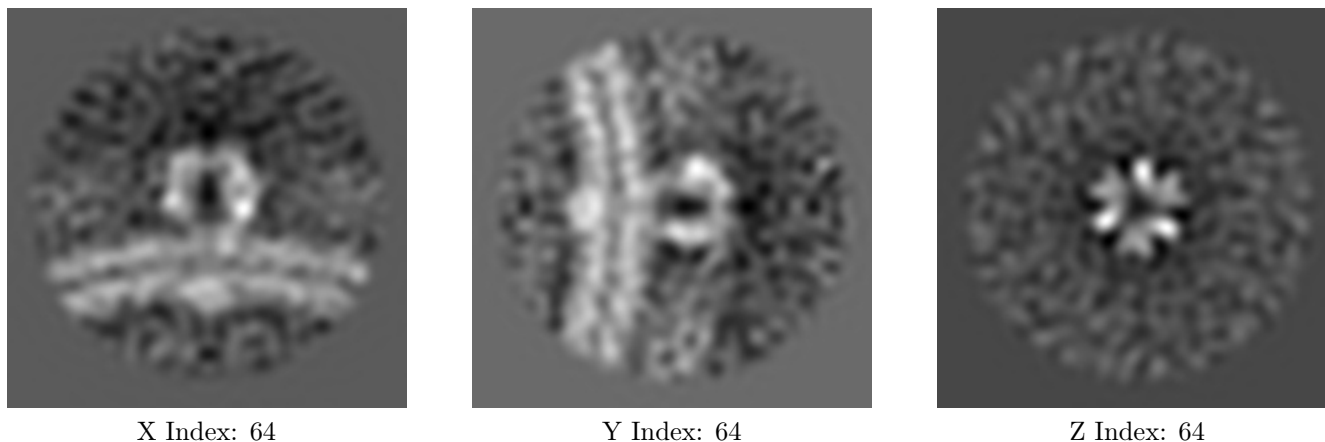
This section contains visualisations of the EMDB entry EMD-3292. These allow visual inspection of the internal detail of the tomogram and identification of artifacts.

### 6.1 Orthogonal projections [i](#)



The images above show the tomogram projected in three orthogonal directions.

### 6.2 Central slices [i](#)

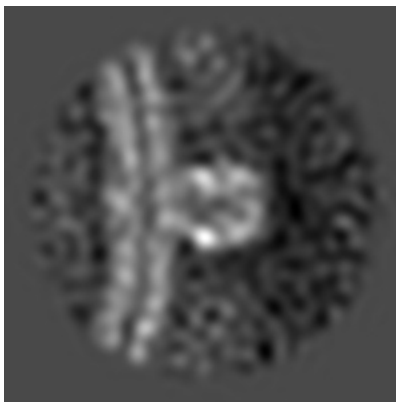


The images above show central slices of the tomogram in three orthogonal directions.

### 6.3 Largest variance slices [i](#)



X Index: 66



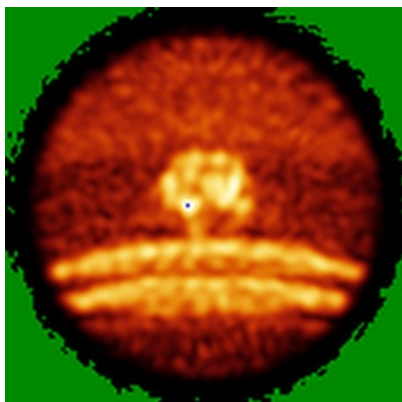
Y Index: 59



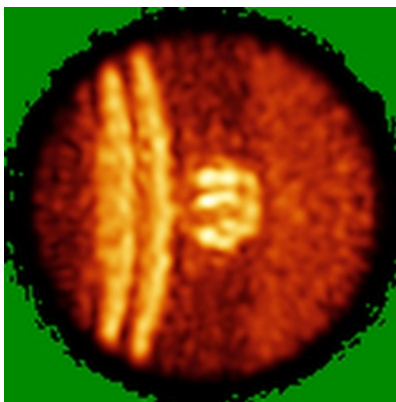
Z Index: 49

The images above show the largest variance slices of the tomogram in three orthogonal directions.

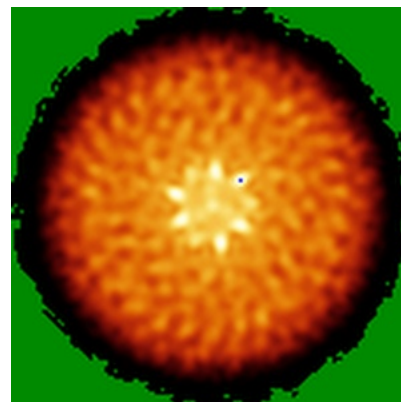
### 6.4 Orthogonal standard-deviation projections (False-color) [i](#)



X



Y



Z

The images above show the tomogram projected in three orthogonal directions.

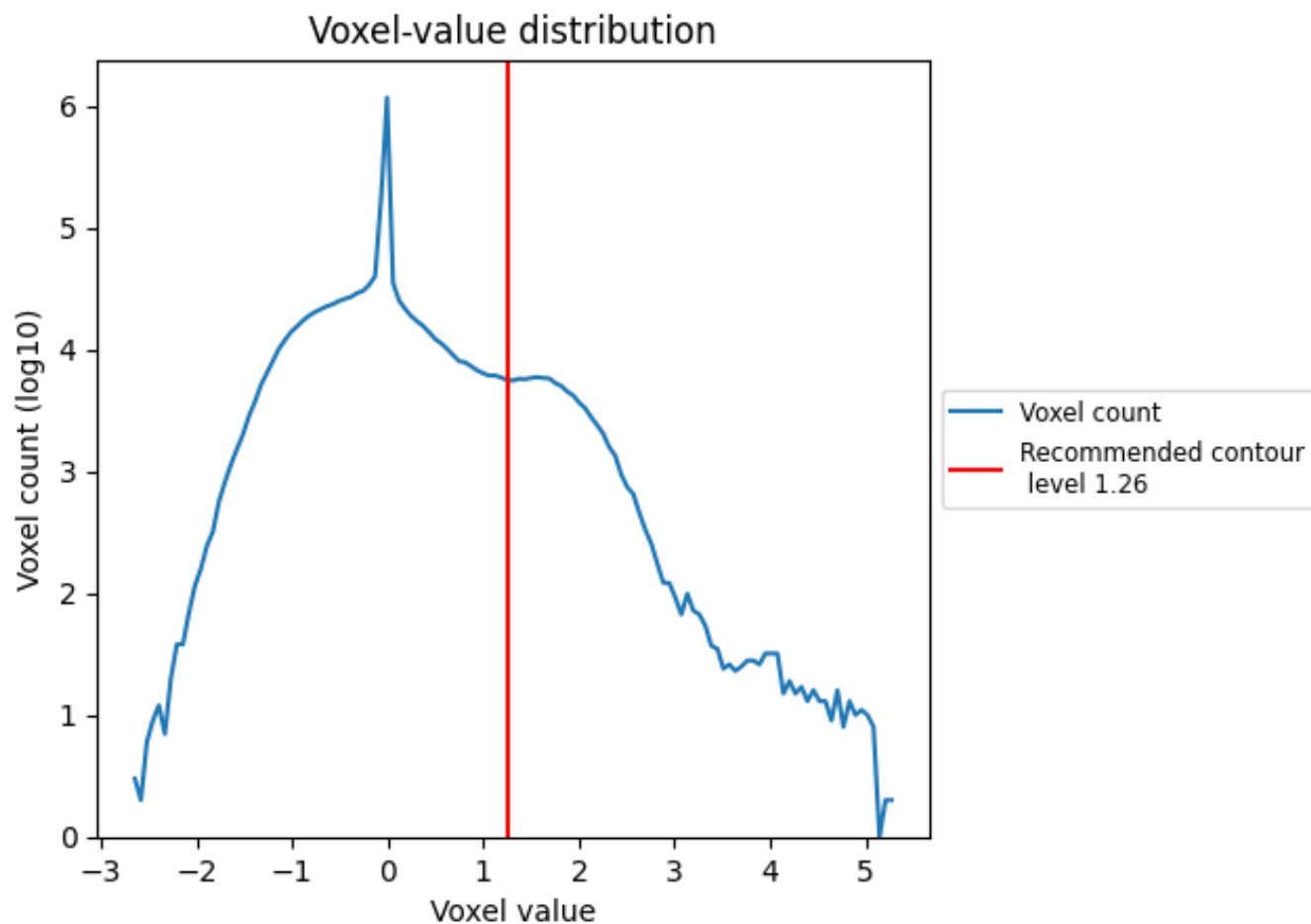
### 6.5 Mask visualisation [i](#)

This section was not generated. No masks/segmentation were deposited.

## 7 Tomogram analysis [i](#)

This section contains the results of statistical analysis of the tomogram.

### 7.1 Voxel-value distribution [i](#)



The voxel-value distribution is plotted in 128 intervals along the x-axis. The y-axis is logarithmic.

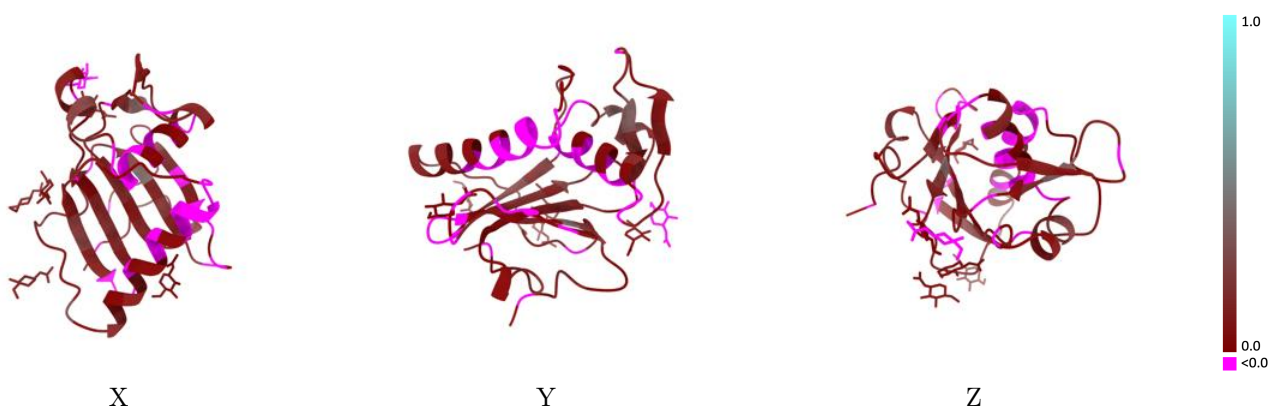
## 8 Map-model fit [i](#)

This section contains information regarding the fit between EMDB map EMD-3292 and PDB model 5FT2. Per-residue inclusion information can be found in section 3 on page 5.

### 8.1 Map-model overlay [i](#)

This section was not generated.

### 8.2 Q-score mapped to coordinate model [i](#)

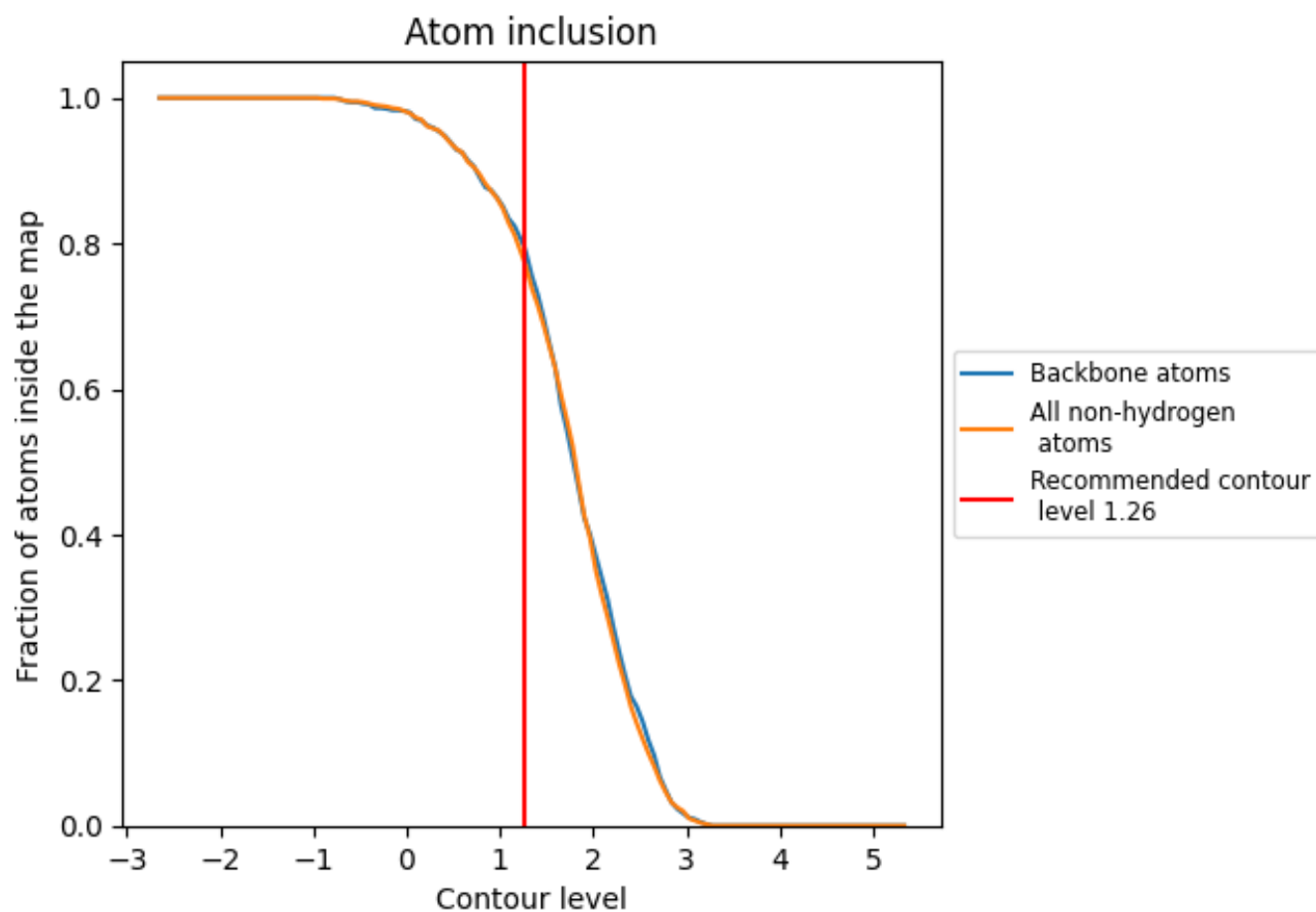


The images above show the model with each residue coloured according to its Q-score. This shows their resolvability in the map with higher Q-score values reflecting better resolvability. Please note: Q-score is calculating the resolvability of atoms, and thus high values are only expected at resolutions at which atoms can be resolved. Low Q-score values may therefore be expected for many entries.

### 8.3 Atom inclusion mapped to coordinate model [i](#)

This section was not generated.









## 8.4 Atom inclusion [i](#)



At the recommended contour level, 80% of all backbone atoms, 78% of all non-hydrogen atoms, are inside the map.

## 8.5 Map-model fit summary

The table lists the average atom inclusion at the recommended contour level (1.26) and Q-score for the entire model and for each chain.

Chain	Atom inclusion	Q-score
All	 0.7760	 0.0600
A	 0.0000	 -0.0610
B	 0.7970	 0.0630
C	 0.6430	 0.0760

