



wwPDB X-ray Structure Validation Summary Report ⓘ

Mar 5, 2026 – 01:36 PM UTC

PDB ID : 5FT6 / pdb_00005ft6
Title : Crystal structure of the cysteine desulfurase CsdA (S-sulfonic acid) from Escherichia coli at 2.050 Angstroem resolution
Authors : Fernandez, F.J.; Arda, A.; Lopez-Esteva, M.; Aranda, J.; Penya-Soler, E.; Garces, F.; Round, A.; Campos-Oliva, R.; Bruix, M.; Coll, M.; Tunon, I.; Jimenez-Barbero, J.; Vega, M.C.
Deposited on : 2016-01-11
Resolution : 2.05 Å(reported)

This is a wwPDB X-ray Structure Validation Summary Report for a publicly released PDB entry.

We welcome your comments at validation@mail.wwpdb.org

A user guide is available at

<https://www.wwpdb.org/validation/2017/XrayValidationReportHelp>

with specific help available everywhere you see the ⓘ symbol.

The types of validation reports are described at

<http://www.wwpdb.org/validation/2017/FAQs#types>.

The following versions of software and data (see [references ⓘ](#)) were used in the production of this report:

MolProbity : 4-5-2 with Phenix2.0
Mogul : 2022.3.0, CSD as543be (2022)
Xtriage (Phenix) : 2.0
EDS : 3.0
Percentile statistics : 20250101.v01 (using entries in the PDB archive January 1st 2025)
CCP4 : 9.0.010 (Gargrove)
Density-Fitness : 1.0.12
Ideal geometry (proteins) : Engh & Huber (2001)
Ideal geometry (DNA, RNA) : Parkinson et al. (1996)
Validation Pipeline (wwPDB-VP) : 2.49

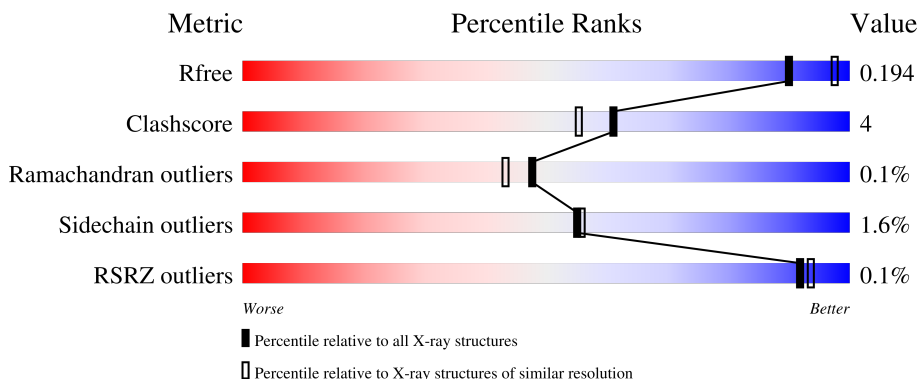
1 Overall quality at a glance

The following experimental techniques were used to determine the structure:

X-RAY DIFFRACTION

The reported resolution of this entry is 2.05 Å.

Percentile scores (ranging between 0-100) for global validation metrics of the entry are shown in the following graphic. The table shows the number of entries on which the scores are based.



Metric	Whole archive (#Entries)	Similar resolution (#Entries, resolution range(Å))
R_{free}	180053	2260 (2.04-2.04)
Clashscore	190562	2333 (2.04-2.04)
Ramachandran outliers	187476	2318 (2.04-2.04)
Sidechain outliers	187428	2318 (2.04-2.04)
RSRZ outliers	180081	2260 (2.04-2.04)

The table below summarises the geometric issues observed across the polymeric chains and their fit to the electron density. The red, orange, yellow and green segments of the lower bar indicate the fraction of residues that contain outliers for ≥ 3 , 2, 1 and 0 types of geometric quality criteria respectively. A grey segment represents the fraction of residues that are not modelled. The numeric value for each fraction is indicated below the corresponding segment, with a dot representing fractions $\leq 5\%$. The upper red bar (where present) indicates the fraction of residues that have poor fit to the electron density. The numeric value is given above the bar.

Mol	Chain	Length	Quality of chain
1	A	401	
1	B	401	

2 Entry composition [i](#)

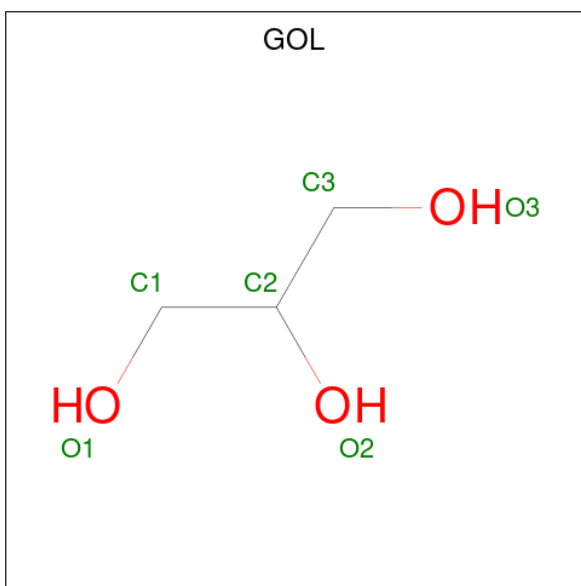
There are 5 unique types of molecules in this entry. The entry contains 6986 atoms, of which 0 are hydrogens and 0 are deuteriums.

In the tables below, the ZeroOcc column contains the number of atoms modelled with zero occupancy, the AltConf column contains the number of residues with at least one atom in alternate conformation and the Trace column contains the number of residues modelled with at most 2 atoms.

- Molecule 1 is a protein called CYSTEINE DESULFURASE CSDA.

Mol	Chain	Residues	Atoms					ZeroOcc	AltConf	Trace
			Total	C	N	O	S			
1	A	401	Total 3104	C 1964	N 539	O 585	S 16	0	9	1
1	B	400	Total 3090	C 1951	N 540	O 586	S 13	0	7	1

- Molecule 2 is GLYCEROL (CCD ID: GOL) (formula: C₃H₈O₃).



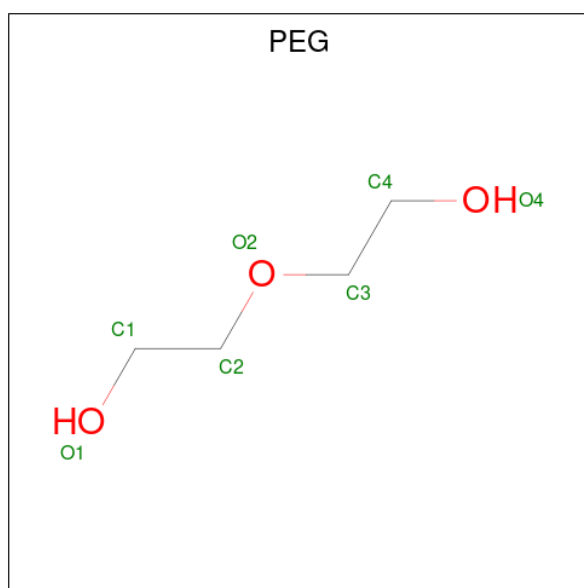
Mol	Chain	Residues	Atoms			ZeroOcc	AltConf
			Total	C	O		
2	A	1	Total 6	C 3	O 3	0	0
2	A	1	Total 6	C 3	O 3	0	0
2	A	1	Total 6	C 3	O 3	0	0
2	A	1	Total 6	C 3	O 3	0	0

Continued on next page...

Continued from previous page...

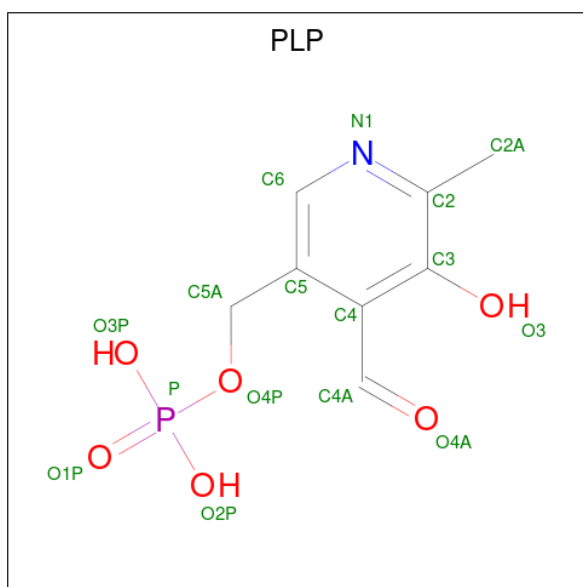
Mol	Chain	Residues	Atoms			ZeroOcc	AltConf
2	A	1	Total	C	O	0	0
			6	3	3		
2	A	1	Total	C	O	0	0
			6	3	3		
2	B	1	Total	C	O	0	0
			6	3	3		
2	B	1	Total	C	O	0	0
			6	3	3		
2	B	1	Total	C	O	0	0
			6	3	3		

- Molecule 3 is DI(HYDROXYETHYL)ETHER (CCD ID: PEG) (formula: C₄H₁₀O₃).



Mol	Chain	Residues	Atoms			ZeroOcc	AltConf
3	A	1	Total	C	O	0	0
			7	4	3		
3	B	1	Total	C	O	0	0
			7	4	3		

- Molecule 4 is PYRIDOXAL-5'-PHOSPHATE (CCD ID: PLP) (formula: C₈H₁₀NO₆P).



Mol	Chain	Residues	Atoms					ZeroOcc	AltConf
			Total	C	N	O	P		
4	A	1	15	8	1	5	1	0	0
4	B	1	15	8	1	5	1	0	0

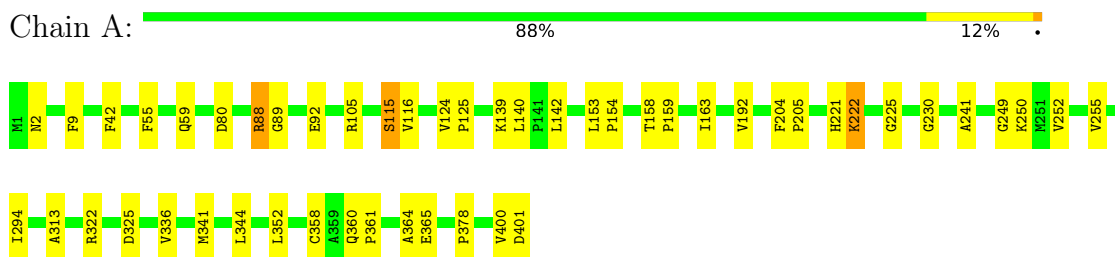
- Molecule 5 is water.

Mol	Chain	Residues	Atoms		ZeroOcc	AltConf
			Total	O		
5	A	441	441	441	0	0
5	B	253	253	253	0	0

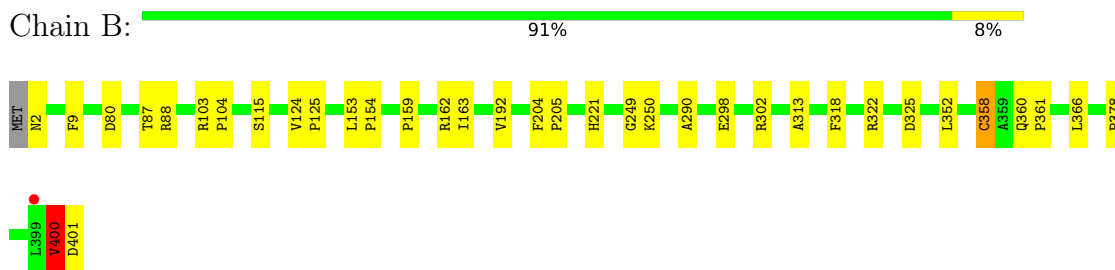
3 Residue-property plots [i](#)

These plots are drawn for all protein, RNA, DNA and oligosaccharide chains in the entry. The first graphic for a chain summarises the proportions of the various outlier classes displayed in the second graphic. The second graphic shows the sequence view annotated by issues in geometry and electron density. Residues are color-coded according to the number of geometric quality criteria for which they contain at least one outlier: green = 0, yellow = 1, orange = 2 and red = 3 or more. A red dot above a residue indicates a poor fit to the electron density ($RSRZ > 2$). Stretches of 2 or more consecutive residues without any outlier are shown as a green connector. Residues present in the sample, but not in the model, are shown in grey.

- Molecule 1: CYSTEINE DESULFURASE CSDA



- Molecule 1: CYSTEINE DESULFURASE CSDA



4 Data and refinement statistics

Property	Value	Source
Space group	P 21 21 21	Depositor
Cell constants a, b, c, α , β , γ	75.97Å 99.79Å 105.75Å 90.00° 90.00° 90.00°	Depositor
Resolution (Å)	39.80 – 2.05 39.80 – 2.05	Depositor EDS
% Data completeness (in resolution range)	98.6 (39.80-2.05) 98.7 (39.80-2.05)	Depositor EDS
R_{merge}	0.10	Depositor
R_{sym}	(Not available)	Depositor
$\langle I/\sigma(I) \rangle$ ¹	2.68 (at 2.05Å)	Xtrriage
Refinement program	PHENIX (PHENIX.REFINE)	Depositor
R, R_{free}	0.154 , 0.191 0.160 , 0.194	Depositor DCC
R_{free} test set	2555 reflections (5.05%)	wwPDB-VP
Wilson B-factor (Å ²)	22.3	Xtrriage
Anisotropy	0.666	Xtrriage
Bulk solvent k_{sol} (e/Å ³), B_{sol} (Å ²)	0.37 , 49.1	EDS
L-test for twinning ²	$\langle L \rangle = 0.48$, $\langle L^2 \rangle = 0.31$	Xtrriage
Estimated twinning fraction	No twinning to report.	Xtrriage
F_o, F_c correlation	0.96	EDS
Total number of atoms	6986	wwPDB-VP
Average B, all atoms (Å ²)	15.0	wwPDB-VP

Xtrriage's analysis on translational NCS is as follows: *The largest off-origin peak in the Patterson function is 3.96% of the height of the origin peak. No significant pseudotranslation is detected.*

¹Intensities estimated from amplitudes.

²Theoretical values of $\langle |L| \rangle$, $\langle L^2 \rangle$ for acentric reflections are 0.5, 0.333 respectively for untwinned datasets, and 0.375, 0.2 for perfectly twinned datasets.

5 Model quality [i](#)

5.1 Standard geometry [i](#)

Bond lengths and bond angles in the following residue types are not validated in this section: PLP, PEG, GOL, CSU

The Z score for a bond length (or angle) is the number of standard deviations the observed value is removed from the expected value. A bond length (or angle) with $|Z| > 5$ is considered an outlier worth inspection. RMSZ is the root-mean-square of all Z scores of the bond lengths (or angles).

Mol	Chain	Bond lengths		Bond angles	
		RMSZ	# $ Z > 5$	RMSZ	# $ Z > 5$
1	A	0.38	2/3166 (0.1%)	0.69	4/4310 (0.1%)
1	B	0.40	2/3146 (0.1%)	0.70	2/4284 (0.0%)
All	All	0.39	4/6312 (0.1%)	0.69	6/8594 (0.1%)

All (4) bond length outliers are listed below:

Mol	Chain	Res	Type	Atoms	Z	Observed(Å)	Ideal(Å)
1	A	364	ALA	C-O	-7.26	1.15	1.24
1	B	290	ALA	C-O	-7.13	1.15	1.24
1	A	400	VAL	C-N	-7.00	1.23	1.33
1	B	400	VAL	C-N	-6.97	1.23	1.33

The worst 5 of 6 bond angle outliers are listed below:

Mol	Chain	Res	Type	Atoms	Z	Observed(°)	Ideal(°)
1	B	221	HIS	CA-C-N	9.64	137.08	120.68
1	B	221	HIS	C-N-CA	9.64	137.08	120.68
1	A	221	HIS	CA-C-N	9.60	137.00	120.68
1	A	221	HIS	C-N-CA	9.60	137.00	120.68
1	A	225	GLY	CA-C-N	5.17	125.11	119.78

There are no chirality outliers.

There are no planarity outliers.

5.2 Too-close contacts [i](#)

In the following table, the Non-H and H(model) columns list the number of non-hydrogen atoms and hydrogen atoms in the chain respectively. The H(added) column lists the number of hydrogen atoms added and optimized by MolProbity. The Clashes column lists the number of clashes within

the asymmetric unit, whereas Symm-Clashes lists symmetry-related clashes.

Mol	Chain	Non-H	H(model)	H(added)	Clashes	Symm-Clashes
1	A	3104	0	3062	31	0
1	B	3090	0	3030	23	0
2	A	36	0	48	4	1
2	B	18	0	24	2	0
3	A	7	0	10	0	0
3	B	7	0	10	0	0
4	A	15	0	6	1	0
4	B	15	0	6	0	0
5	A	441	0	0	3	2
5	B	253	0	0	3	1
All	All	6986	0	6196	52	3

The all-atom clashscore is defined as the number of clashes found per 1000 atoms (including hydrogen atoms). The all-atom clashscore for this structure is 4.

The worst 5 of 52 close contacts within the same asymmetric unit are listed below, sorted by their clash magnitude.

Atom-1	Atom-2	Interatomic distance (Å)	Clash overlap (Å)
2:A:505:GOL:H11	5:A:2196:HOH:O	1.92	0.70
1:A:365:GLU:OE1	5:A:2210:HOH:O	2.11	0.68
1:A:252:VAL:HG21	1:A:255:VAL:HG22	1.77	0.66
1:A:401:ASP:N	5:A:2437:HOH:O	2.29	0.64
2:B:502:GOL:H31	5:B:2212:HOH:O	1.99	0.62

All (3) symmetry-related close contacts are listed below. The label for Atom-2 includes the symmetry operator and encoded unit-cell translations to be applied.

Atom-1	Atom-2	Interatomic distance (Å)	Clash overlap (Å)
5:A:2086:HOH:O	5:A:2342:HOH:O[4_555]	2.11	0.09
5:A:2390:HOH:O	5:B:2223:HOH:O[3_554]	2.12	0.08
2:A:502:GOL:O1	2:A:505:GOL:O1[3_454]	2.14	0.06

5.3 Torsion angles [i](#)

5.3.1 Protein backbone [i](#)

In the following table, the Percentiles column shows the percent Ramachandran outliers of the chain as a percentile score with respect to all X-ray entries followed by that with respect to entries of similar resolution.

The Analysed column shows the number of residues for which the backbone conformation was analysed, and the total number of residues.

Mol	Chain	Analysed	Favoured	Allowed	Outliers	Percentiles	
1	A	407/401 (102%)	398 (98%)	9 (2%)	0	100	100
1	B	404/401 (101%)	390 (96%)	13 (3%)	1 (0%)	43	37
All	All	811/802 (101%)	788 (97%)	22 (3%)	1 (0%)	48	43

All (1) Ramachandran outliers are listed below:

Mol	Chain	Res	Type
1	B	400	VAL

5.3.2 Protein sidechains [i](#)

In the following table, the Percentiles column shows the percent sidechain outliers of the chain as a percentile score with respect to all X-ray entries followed by that with respect to entries of similar resolution.

The Analysed column shows the number of residues for which the sidechain conformation was analysed, and the total number of residues.

Mol	Chain	Analysed	Rotameric	Outliers	Percentiles	
1	A	322/314 (102%)	314 (98%)	8 (2%)	42	39
1	B	319/314 (102%)	316 (99%)	3 (1%)	70	75
All	All	641/628 (102%)	630 (98%)	11 (2%)	55	53

5 of 11 residues with a non-rotameric sidechain are listed below:

Mol	Chain	Res	Type
1	A	344	LEU
1	B	80	ASP
1	B	366	LEU
1	B	115	SER
1	A	115	SER

Sometimes sidechains can be flipped to improve hydrogen bonding and reduce clashes. 5 of 12 such sidechains are listed below:

Mol	Chain	Res	Type
1	A	390	ASN
1	B	2	ASN

Continued on next page...

Continued from previous page...

Mol	Chain	Res	Type
1	B	356	GLN
1	B	221	HIS
1	A	145	GLN

5.3.3 RNA [i](#)

There are no RNA molecules in this entry.

5.4 Non-standard residues in protein, DNA, RNA chains [i](#)

2 non-standard protein/DNA/RNA residues are modelled in this entry.

In the following table, the Counts columns list the number of bonds (or angles) for which Mogul statistics could be retrieved, the number of bonds (or angles) that are observed in the model and the number of bonds (or angles) that are defined in the Chemical Component Dictionary. The Link column lists molecule types, if any, to which the group is linked. The Z score for a bond length (or angle) is the number of standard deviations the observed value is removed from the expected value. A bond length (or angle) with $|Z| > 2$ is considered an outlier worth inspection. RMSZ is the root-mean-square of all Z scores of the bond lengths (or angles).

Mol	Type	Chain	Res	Link	Bond lengths			Bond angles		
					Counts	RMSZ	# Z > 2	Counts	RMSZ	# Z > 2
1	CSU	B	358	1	7,9,10	1.47	1 (14%)	4,12,14	1.79	1 (25%)
1	CSU	A	358	1	7,9,10	1.43	1 (14%)	4,12,14	1.75	1 (25%)

In the following table, the Chirals column lists the number of chiral outliers, the number of chiral centers analysed, the number of these observed in the model and the number defined in the Chemical Component Dictionary. Similar counts are reported in the Torsion and Rings columns. '-' means no outliers of that kind were identified.

Mol	Type	Chain	Res	Link	Chirals	Torsions	Rings
1	CSU	B	358	1	-	1/4/8/10	-
1	CSU	A	358	1	-	0/4/8/10	-

All (2) bond length outliers are listed below:

Mol	Chain	Res	Type	Atoms	Z	Observed(Å)	Ideal(Å)
1	B	358	CSU	CB-SG	-2.75	1.77	1.82
1	A	358	CSU	CB-SG	-2.71	1.77	1.82

All (2) bond angle outliers are listed below:

Mol	Chain	Res	Type	Atoms	Z	Observed(°)	Ideal(°)
1	B	358	CSU	OD2-S-OD3	-3.38	101.48	112.74
1	A	358	CSU	OD2-S-OD3	-3.28	101.82	112.74

There are no chirality outliers.

All (1) torsion outliers are listed below:

Mol	Chain	Res	Type	Atoms
1	B	358	CSU	OD2-S-SG-CB

There are no ring outliers.

1 monomer is involved in 1 short contact:

Mol	Chain	Res	Type	Clashes	Symm-Clashes
1	B	358	CSU	1	0

5.5 Carbohydrates [i](#)

There are no oligosaccharides in this entry.

5.6 Ligand geometry [i](#)

13 ligands are modelled in this entry.

In the following table, the Counts columns list the number of bonds (or angles) for which Mogul statistics could be retrieved, the number of bonds (or angles) that are observed in the model and the number of bonds (or angles) that are defined in the Chemical Component Dictionary. The Link column lists molecule types, if any, to which the group is linked. The Z score for a bond length (or angle) is the number of standard deviations the observed value is removed from the expected value. A bond length (or angle) with $|Z| > 2$ is considered an outlier worth inspection. RMSZ is the root-mean-square of all Z scores of the bond lengths (or angles).

Mol	Type	Chain	Res	Link	Bond lengths			Bond angles		
					Counts	RMSZ	$\# Z > 2$	Counts	RMSZ	$\# Z > 2$
2	GOL	A	501	-	5,5,5	0.32	0	5,5,5	0.71	0
2	GOL	A	502	-	5,5,5	0.38	0	5,5,5	0.34	0
2	GOL	A	503	-	5,5,5	0.27	0	5,5,5	0.56	0
2	GOL	A	505	-	5,5,5	0.29	0	5,5,5	0.79	0
2	GOL	A	506	-	5,5,5	0.38	0	5,5,5	0.22	0
2	GOL	B	502	-	5,5,5	0.37	0	5,5,5	0.34	0
3	PEG	A	507	-	6,6,6	0.62	0	5,5,5	0.73	0
3	PEG	B	504	-	6,6,6	0.63	0	5,5,5	0.87	0
2	GOL	B	501	-	5,5,5	0.36	0	5,5,5	0.24	0

Mol	Type	Chain	Res	Link	Bond lengths			Bond angles		
					Counts	RMSZ	# Z > 2	Counts	RMSZ	# Z > 2
4	PLP	A	1222	1	15,15,16	1.87	2 (13%)	21,22,23	1.89	3 (14%)
2	GOL	B	503	-	5,5,5	0.38	0	5,5,5	0.24	0
4	PLP	B	1222	1	15,15,16	1.87	2 (13%)	21,22,23	1.70	3 (14%)
2	GOL	A	504	-	5,5,5	0.38	0	5,5,5	0.28	0

In the following table, the Chirals column lists the number of chiral outliers, the number of chiral centers analysed, the number of these observed in the model and the number defined in the Chemical Component Dictionary. Similar counts are reported in the Torsion and Rings columns. '-' means no outliers of that kind were identified.

Mol	Type	Chain	Res	Link	Chirals	Torsions	Rings
2	GOL	A	501	-	-	2/4/4/4	-
2	GOL	A	502	-	-	2/4/4/4	-
2	GOL	A	503	-	-	2/4/4/4	-
2	GOL	A	505	-	-	2/4/4/4	-
2	GOL	A	506	-	-	2/4/4/4	-
2	GOL	B	502	-	-	2/4/4/4	-
3	PEG	A	507	-	-	4/4/4/4	-
3	PEG	B	504	-	-	3/4/4/4	-
2	GOL	B	501	-	-	2/4/4/4	-
4	PLP	A	1222	1	-	0/6/6/8	0/1/1/1
2	GOL	B	503	-	-	2/4/4/4	-
4	PLP	B	1222	1	-	0/6/6/8	0/1/1/1
2	GOL	A	504	-	-	3/4/4/4	-

All (4) bond length outliers are listed below:

Mol	Chain	Res	Type	Atoms	Z	Observed(Å)	Ideal(Å)
4	B	1222	PLP	O3-C3	-5.86	1.23	1.36
4	A	1222	PLP	O3-C3	-5.83	1.23	1.36
4	A	1222	PLP	C2-N1	2.51	1.38	1.33
4	B	1222	PLP	C2-N1	2.47	1.38	1.33

The worst 5 of 6 bond angle outliers are listed below:

Mol	Chain	Res	Type	Atoms	Z	Observed(°)	Ideal(°)
4	A	1222	PLP	O4P-C5A-C5	6.89	122.26	109.36
4	B	1222	PLP	O4P-C5A-C5	6.24	121.06	109.36
4	A	1222	PLP	C6-C5-C4	2.73	120.34	118.10

Continued on next page...

Continued from previous page...

Mol	Chain	Res	Type	Atoms	Z	Observed(°)	Ideal(°)
4	B	1222	PLP	C6-C5-C4	2.48	120.13	118.10
4	A	1222	PLP	C5-C6-N1	-2.18	120.29	123.83

There are no chirality outliers.

5 of 26 torsion outliers are listed below:

Mol	Chain	Res	Type	Atoms
2	A	501	GOL	C1-C2-C3-O3
2	A	502	GOL	C1-C2-C3-O3
2	A	503	GOL	C1-C2-C3-O3
2	A	504	GOL	C1-C2-C3-O3
2	A	506	GOL	C1-C2-C3-O3

There are no ring outliers.

7 monomers are involved in 8 short contacts:

Mol	Chain	Res	Type	Clashes	Symm-Clashes
2	A	501	GOL	1	0
2	A	502	GOL	0	1
2	A	505	GOL	1	1
2	B	502	GOL	1	0
4	A	1222	PLP	1	0
2	B	503	GOL	1	0
2	A	504	GOL	2	0

5.7 Other polymers [i](#)

There are no such residues in this entry.

5.8 Polymer linkage issues [i](#)

There are no chain breaks in this entry.

6 Fit of model and data [i](#)

6.1 Protein, DNA and RNA chains [i](#)

In the following table, the column labelled ‘#RSRZ> 2’ contains the number (and percentage) of RSRZ outliers, followed by percent RSRZ outliers for the chain as percentile scores relative to all X-ray entries and entries of similar resolution. The OWAB column contains the minimum, median, 95th percentile and maximum values of the occupancy-weighted average B-factor per residue. The column labelled ‘Q< 0.9’ lists the number of (and percentage) of residues with an average occupancy less than 0.9.

Mol	Chain	Analysed	<RSRZ>	#RSRZ>2	OWAB(Å ²)	Q<0.9
1	A	400/401 (99%)	-0.72	0 100 100	1, 7, 26, 70	9 (2%)
1	B	399/401 (99%)	-0.51	1 (0%) 90 92	2, 15, 36, 69	7 (1%)
All	All	799/802 (99%)	-0.62	1 (0%) 92 93	1, 11, 32, 70	16 (2%)

All (1) RSRZ outliers are listed below:

Mol	Chain	Res	Type	RSRZ
1	B	399	LEU	2.0

6.2 Non-standard residues in protein, DNA, RNA chains [i](#)

In the following table, the Atoms column lists the number of modelled atoms in the group and the number defined in the chemical component dictionary. The B-factors column lists the minimum, median, 95th percentile and maximum values of B factors of atoms in the group. The column labelled ‘Q< 0.9’ lists the number of atoms with occupancy less than 0.9.

Mol	Type	Chain	Res	Atoms	RSCC	RSR	B-factors(Å ²)	Q<0.9
1	CSU	A	358	10/11	0.96	0.07	2,7,28,34	0
1	CSU	B	358	10/11	0.97	0.07	8,11,26,39	0

6.3 Carbohydrates [i](#)

There are no oligosaccharides in this entry.

6.4 Ligands [i](#)

In the following table, the Atoms column lists the number of modelled atoms in the group and the number defined in the chemical component dictionary. The B-factors column lists the minimum,

median, 95th percentile and maximum values of B factors of atoms in the group. The column labelled 'Q< 0.9' lists the number of atoms with occupancy less than 0.9.

Mol	Type	Chain	Res	Atoms	RSCC	RSR	B-factors(\AA^2)	Q<0.9
3	PEG	B	504	7/7	0.73	0.17	40,46,55,56	0
2	GOL	A	504	6/6	0.75	0.16	40,48,49,53	0
2	GOL	A	505	6/6	0.77	0.17	28,49,59,59	0
2	GOL	B	503	6/6	0.81	0.17	44,46,59,59	0
3	PEG	A	507	7/7	0.81	0.15	35,44,63,66	0
2	GOL	A	503	6/6	0.81	0.13	18,38,49,51	0
2	GOL	A	501	6/6	0.85	0.10	31,37,40,44	0
2	GOL	B	501	6/6	0.85	0.15	11,35,44,46	0
2	GOL	B	502	6/6	0.85	0.14	38,44,52,55	0
2	GOL	A	502	6/6	0.93	0.08	18,23,29,29	0
2	GOL	A	506	6/6	0.96	0.08	7,23,31,40	0
4	PLP	A	1222	15/16	0.98	0.05	1,3,8,9	0
4	PLP	B	1222	15/16	0.98	0.05	2,8,12,12	0

6.5 Other polymers [i](#)

There are no such residues in this entry.