



# wwPDB X-ray Structure Validation Summary Report ⓘ

Mar 10, 2026 – 01:42 AM UTC

PDB ID : 5G4E / pdb\_00005g4e  
Title : S. enterica HisA mutant D10G, Dup13-15, Q24L, G102A, V106L  
Authors : Soderholm, A.; Guo, X.; Newton, M.; Nasvall, J.; Duarte, F.; Andersson, D.;  
Patrick, W.; Selmer, M.  
Deposited on : 2016-05-12  
Resolution : 2.65 Å(reported)

This is a wwPDB X-ray Structure Validation Summary Report for a publicly released PDB entry.

We welcome your comments at [validation@mail.wwpdb.org](mailto:validation@mail.wwpdb.org)

A user guide is available at

<https://www.wwpdb.org/validation/2017/XrayValidationReportHelp>

with specific help available everywhere you see the ⓘ symbol.

The types of validation reports are described at

<http://www.wwpdb.org/validation/2017/FAQs#types>.

---

The following versions of software and data (see [references ⓘ](#)) were used in the production of this report:

MolProbity : 4-5-2 with Phenix2.0  
Mogul : 2022.3.0, CSD as543be (2022)  
Xtriage (Phenix) : 2.0  
EDS : 3.0  
Percentile statistics : 20250101.v01 (using entries in the PDB archive January 1st 2025)  
CCP4 : 9.0.010 (Gargrove)  
Density-Fitness : 1.0.12  
Ideal geometry (proteins) : Engh & Huber (2001)  
Ideal geometry (DNA, RNA) : Parkinson et al. (1996)  
Validation Pipeline (wwPDB-VP) : 2.49

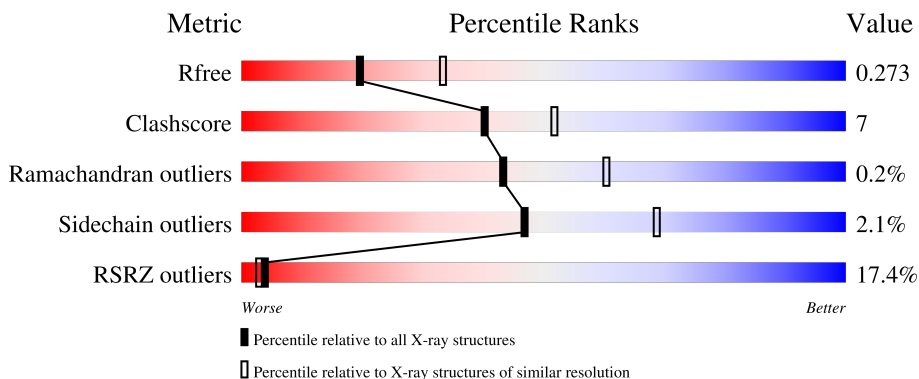
# 1 Overall quality at a glance

The following experimental techniques were used to determine the structure:

*X-RAY DIFFRACTION*

The reported resolution of this entry is 2.65 Å.

Percentile scores (ranging between 0-100) for global validation metrics of the entry are shown in the following graphic. The table shows the number of entries on which the scores are based.



Metric	Whole archive (#Entries)	Similar resolution (#Entries, resolution range(Å))
$R_{free}$	180053	1110 (2.66-2.66)
Clashscore	190562	1141 (2.66-2.66)
Ramachandran outliers	187476	1126 (2.66-2.66)
Sidechain outliers	187428	1126 (2.66-2.66)
RSRZ outliers	180081	1110 (2.66-2.66)

The table below summarises the geometric issues observed across the polymeric chains and their fit to the electron density. The red, orange, yellow and green segments of the lower bar indicate the fraction of residues that contain outliers for  $\geq 3$ , 2, 1 and 0 types of geometric quality criteria respectively. A grey segment represents the fraction of residues that are not modelled. The numeric value for each fraction is indicated below the corresponding segment, with a dot representing fractions  $\leq 5\%$ . The upper red bar (where present) indicates the fraction of residues that have poor fit to the electron density. The numeric value is given above the bar.

Mol	Chain	Length	Quality of chain
1	A	256	
1	B	256	

## 2 Entry composition i

There are 6 unique types of molecules in this entry. The entry contains 3230 atoms, of which 0 are hydrogens and 0 are deuteriums.

In the tables below, the ZeroOcc column contains the number of atoms modelled with zero occupancy, the AltConf column contains the number of residues with at least one atom in alternate conformation and the Trace column contains the number of residues modelled with at most 2 atoms.

- Molecule 1 is a protein called 1-(5-phosphoribosyl)-5-[(5-phosphoribosylamino)methylideneamino]imidazole-4-carboxamide isomerase.

Mol	Chain	Residues	Atoms					ZeroOcc	AltConf	Trace
			Total	C	N	O	S			
1	A	220	1639	1044	290	301	4	0	0	0
1	B	206	1537	980	268	285	4	0	0	0

There are 30 discrepancies between the modelled and reference sequences:

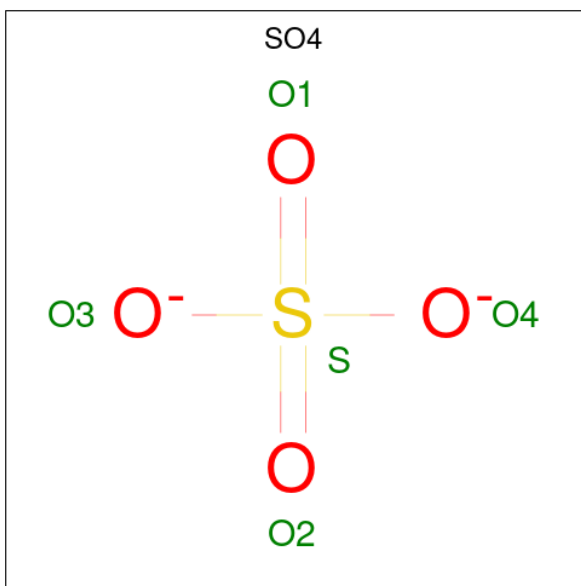
Chain	Residue	Modelled	Actual	Comment	Reference
A	10	GLY	ASP	engineered mutation	UNP A0A630AQ07
A	15A	VAL	-	insertion	UNP A0A630AQ07
A	15B	VAL	-	insertion	UNP A0A630AQ07
A	15C	ARG	-	insertion	UNP A0A630AQ07
A	24	LEU	GLN	engineered mutation	UNP A0A630AQ07
A	102	ALA	GLY	engineered mutation	UNP A0A630AQ07
A	106	LEU	VAL	engineered mutation	UNP A0A630AQ07
A	246	LYS	-	expression tag	UNP A0A630AQ07
A	247	GLY	-	expression tag	UNP A0A630AQ07
A	248	HIS	-	expression tag	UNP A0A630AQ07
A	249	HIS	-	expression tag	UNP A0A630AQ07
A	250	HIS	-	expression tag	UNP A0A630AQ07
A	251	HIS	-	expression tag	UNP A0A630AQ07
A	252	HIS	-	expression tag	UNP A0A630AQ07
A	253	HIS	-	expression tag	UNP A0A630AQ07
B	10	GLY	ASP	engineered mutation	UNP A0A630AQ07
B	15A	VAL	-	insertion	UNP A0A630AQ07
B	15B	VAL	-	insertion	UNP A0A630AQ07
B	15C	ARG	-	insertion	UNP A0A630AQ07
B	15L	LEU	GLN	engineered mutation	UNP A0A630AQ07
B	102	ALA	GLY	engineered mutation	UNP A0A630AQ07
B	106	LEU	VAL	engineered mutation	UNP A0A630AQ07
B	246	LYS	-	expression tag	UNP A0A630AQ07
B	247	GLY	-	expression tag	UNP A0A630AQ07

*Continued on next page...*

Continued from previous page...

Chain	Residue	Modelled	Actual	Comment	Reference
B	248	HIS	-	expression tag	UNP A0A630AQ07
B	249	HIS	-	expression tag	UNP A0A630AQ07
B	250	HIS	-	expression tag	UNP A0A630AQ07
B	251	HIS	-	expression tag	UNP A0A630AQ07
B	252	HIS	-	expression tag	UNP A0A630AQ07
B	253	HIS	-	expression tag	UNP A0A630AQ07

- Molecule 2 is SULFATE ION (CCD ID: SO4) (formula: O<sub>4</sub>S).

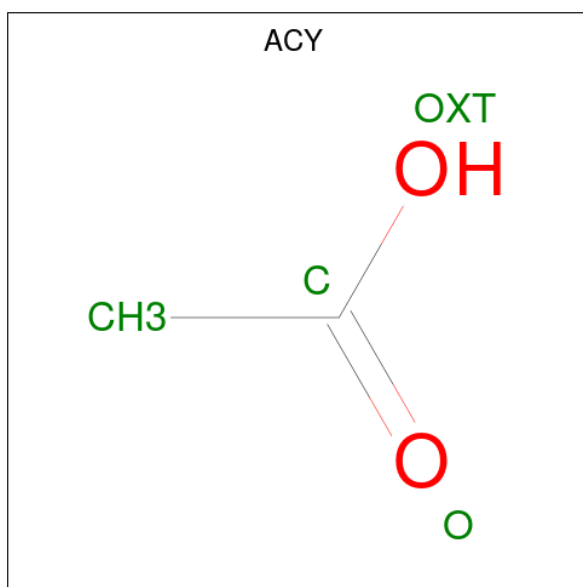


Mol	Chain	Residues	Atoms			ZeroOcc	AltConf
2	A	1	Total	O	S	0	0
			5	4	1		
2	B	1	Total	O	S	0	0
			5	4	1		

- Molecule 3 is SODIUM ION (CCD ID: NA) (formula: Na).

Mol	Chain	Residues	Atoms		ZeroOcc	AltConf
3	A	2	Total	Na	0	0
			2	2		
3	B	2	Total	Na	0	0
			2	2		

- Molecule 4 is ACETIC ACID (CCD ID: ACY) (formula: C<sub>2</sub>H<sub>4</sub>O<sub>2</sub>).



Mol	Chain	Residues	Atoms			ZeroOcc	AltConf
4	A	1	Total	C	O	0	0
			4	2	2		
4	B	1	Total	C	O	0	0
			4	2	2		

- Molecule 5 is GLYCEROL (CCD ID: GOL) (formula:  $C_3H_8O_3$ ).



Mol	Chain	Residues	Atoms			ZeroOcc	AltConf
5	B	1	Total	C	O	0	0
			6	3	3		

- Molecule 6 is water.

<b>Mol</b>	<b>Chain</b>	<b>Residues</b>	<b>Atoms</b>		<b>ZeroOcc</b>	<b>AltConf</b>
6	A	18	Total 18	O 18	0	0
6	B	8	Total 8	O 8	0	0



## 4 Data and refinement statistics

Property	Value	Source
Space group	P 21 21 21	Depositor
Cell constants a, b, c, $\alpha$ , $\beta$ , $\gamma$	48.82Å 88.83Å 117.78Å 90.00° 90.00° 90.00°	Depositor
Resolution (Å)	45.10 – 2.65 45.10 – 2.65	Depositor EDS
% Data completeness (in resolution range)	98.5 (45.10-2.65) 98.8 (45.10-2.65)	Depositor EDS
$R_{merge}$	0.17	Depositor
$R_{sym}$	(Not available)	Depositor
$\langle I/\sigma(I) \rangle$ <sup>1</sup>	3.85 (at 2.65Å)	Xtrriage
Refinement program	PHENIX (PHENIX.REFINE)	Depositor
R, $R_{free}$	0.240 , 0.299 (Not available) , 0.273	Depositor DCC
$R_{free}$ test set	792 reflections (5.17%)	wwPDB-VP
Wilson B-factor (Å <sup>2</sup> )	34.9	Xtrriage
Anisotropy	1.139	Xtrriage
Bulk solvent $k_{sol}$ (e/Å <sup>3</sup> ), $B_{sol}$ (Å <sup>2</sup> )	0.34 , 36.3	EDS
L-test for twinning <sup>2</sup>	$\langle  L  \rangle = 0.47$ , $\langle L^2 \rangle = 0.30$	Xtrriage
Estimated twinning fraction	No twinning to report.	Xtrriage
$F_o, F_c$ correlation	0.92	EDS
Total number of atoms	3230	wwPDB-VP
Average B, all atoms (Å <sup>2</sup> )	45.0	wwPDB-VP

Xtrriage's analysis on translational NCS is as follows: *The analyses of the Patterson function reveals a significant off-origin peak that is 30.35 % of the origin peak, indicating pseudo-translational symmetry. The chance of finding a peak of this or larger height randomly in a structure without pseudo-translational symmetry is equal to 1.3272e-03. The detected translational NCS is most likely also responsible for the elevated intensity ratio.*

<sup>1</sup>Intensities estimated from amplitudes.

<sup>2</sup>Theoretical values of  $\langle |L| \rangle$ ,  $\langle L^2 \rangle$  for acentric reflections are 0.5, 0.333 respectively for untwinned datasets, and 0.375, 0.2 for perfectly twinned datasets.

## 5 Model quality [i](#)

### 5.1 Standard geometry [i](#)

Bond lengths and bond angles in the following residue types are not validated in this section: NA, ACY, GOL, SO4

The Z score for a bond length (or angle) is the number of standard deviations the observed value is removed from the expected value. A bond length (or angle) with  $|Z| > 5$  is considered an outlier worth inspection. RMSZ is the root-mean-square of all Z scores of the bond lengths (or angles).

Mol	Chain	Bond lengths		Bond angles	
		RMSZ	# Z  >5	RMSZ	# Z  >5
1	A	0.31	0/1660	0.66	0/2252
1	B	0.37	0/1557	0.80	3/2114 (0.1%)
All	All	0.34	0/3217	0.73	3/4366 (0.1%)

There are no bond length outliers.

All (3) bond angle outliers are listed below:

Mol	Chain	Res	Type	Atoms	Z	Observed(°)	Ideal(°)
1	B	186	LEU	N-CA-C	-5.70	108.12	114.62
1	B	56	ASP	CA-C-N	5.01	124.50	119.19
1	B	56	ASP	C-N-CA	5.01	124.50	119.19

There are no chirality outliers.

There are no planarity outliers.

### 5.2 Too-close contacts [i](#)

In the following table, the Non-H and H(model) columns list the number of non-hydrogen atoms and hydrogen atoms in the chain respectively. The H(added) column lists the number of hydrogen atoms added and optimized by MolProbity. The Clashes column lists the number of clashes within the asymmetric unit, whereas Symm-Clashes lists symmetry-related clashes.

Mol	Chain	Non-H	H(model)	H(added)	Clashes	Symm-Clashes
1	A	1639	0	1689	17	0
1	B	1537	0	1593	28	0
2	A	5	0	0	0	0
2	B	5	0	0	0	0
3	A	2	0	0	0	0
3	B	2	0	0	0	0

*Continued on next page...*

Continued from previous page...

Mol	Chain	Non-H	H(model)	H(added)	Clashes	Symm-Clashes
4	A	4	0	3	0	0
4	B	4	0	3	0	0
5	B	6	0	8	0	0
6	A	18	0	0	0	0
6	B	8	0	0	0	0
All	All	3230	0	3296	43	0

The all-atom clashscore is defined as the number of clashes found per 1000 atoms (including hydrogen atoms). The all-atom clashscore for this structure is 7.

The worst 5 of 43 close contacts within the same asymmetric unit are listed below, sorted by their clash magnitude.

Atom-1	Atom-2	Interatomic distance (Å)	Clash overlap (Å)
1:B:171:THR:HG22	1:B:202:SER:HB3	1.72	0.72
1:B:15:ARG:HG2	1:B:15:ARG:HH11	1.57	0.70
1:B:60:ARG:NH2	1:B:80:GLY:O	2.22	0.70
1:A:60:ARG:HG2	1:A:62:ILE:HG12	1.76	0.68
1:B:77:GLN:HG2	1:B:98:ARG:HB2	1.75	0.67

There are no symmetry-related clashes.

## 5.3 Torsion angles [i](#)

### 5.3.1 Protein backbone [i](#)

In the following table, the Percentiles column shows the percent Ramachandran outliers of the chain as a percentile score with respect to all X-ray entries followed by that with respect to entries of similar resolution.

The Analysed column shows the number of residues for which the backbone conformation was analysed, and the total number of residues.

Mol	Chain	Analysed	Favoured	Allowed	Outliers	Percentiles	
1	A	210/256 (82%)	202 (96%)	8 (4%)	0	100	100
1	B	198/256 (77%)	188 (95%)	9 (4%)	1 (0%)	24	39
All	All	408/512 (80%)	390 (96%)	17 (4%)	1 (0%)	43	60

All (1) Ramachandran outliers are listed below:

Mol	Chain	Res	Type
1	B	53	GLY

### 5.3.2 Protein sidechains [i](#)

In the following table, the Percentiles column shows the percent sidechain outliers of the chain as a percentile score with respect to all X-ray entries followed by that with respect to entries of similar resolution.

The Analysed column shows the number of residues for which the sidechain conformation was analysed, and the total number of residues.

Mol	Chain	Analysed	Rotameric	Outliers	Percentiles	
1	A	170/202 (84%)	167 (98%)	3 (2%)	51	72
1	B	162/202 (80%)	158 (98%)	4 (2%)	42	64
All	All	332/404 (82%)	325 (98%)	7 (2%)	47	69

5 of 7 residues with a non-rotameric sidechain are listed below:

Mol	Chain	Res	Type
1	B	15	ARG
1	B	15(A)	VAL
1	B	107	LYS
1	B	56	ASP
1	A	220	ARG

Sometimes sidechains can be flipped to improve hydrogen bonding and reduce clashes. All (1) such sidechains are listed below:

Mol	Chain	Res	Type
1	B	155	GLN

### 5.3.3 RNA [i](#)

There are no RNA molecules in this entry.

## 5.4 Non-standard residues in protein, DNA, RNA chains [i](#)

There are no non-standard protein/DNA/RNA residues in this entry.

## 5.5 Carbohydrates [i](#)

There are no oligosaccharides in this entry.

## 5.6 Ligand geometry [i](#)

Of 9 ligands modelled in this entry, 4 are monoatomic - leaving 5 for Mogul analysis.

In the following table, the Counts columns list the number of bonds (or angles) for which Mogul statistics could be retrieved, the number of bonds (or angles) that are observed in the model and the number of bonds (or angles) that are defined in the Chemical Component Dictionary. The Link column lists molecule types, if any, to which the group is linked. The Z score for a bond length (or angle) is the number of standard deviations the observed value is removed from the expected value. A bond length (or angle) with  $|Z| > 2$  is considered an outlier worth inspection. RMSZ is the root-mean-square of all Z scores of the bond lengths (or angles).

Mol	Type	Chain	Res	Link	Bond lengths			Bond angles		
					Counts	RMSZ	# Z  > 2	Counts	RMSZ	# Z  > 2
4	ACY	B	1245	-	3,3,3	0.80	0	3,3,3	0.84	0
2	SO4	A	1245	-	4,4,4	0.24	0	6,6,6	0.09	0
5	GOL	B	1247	-	5,5,5	0.37	0	5,5,5	0.23	0
2	SO4	B	1246	-	4,4,4	0.24	0	6,6,6	0.09	0
4	ACY	A	1248	-	3,3,3	0.83	0	3,3,3	0.79	0

In the following table, the Chirals column lists the number of chiral outliers, the number of chiral centers analysed, the number of these observed in the model and the number defined in the Chemical Component Dictionary. Similar counts are reported in the Torsion and Rings columns. '-' means no outliers of that kind were identified.

Mol	Type	Chain	Res	Link	Chirals	Torsions	Rings
5	GOL	B	1247	-	-	2/4/4/4	-

There are no bond length outliers.

There are no bond angle outliers.

There are no chirality outliers.

All (2) torsion outliers are listed below:

Mol	Chain	Res	Type	Atoms
5	B	1247	GOL	O1-C1-C2-C3
5	B	1247	GOL	O1-C1-C2-O2

There are no ring outliers.

No monomer is involved in short contacts.

## 5.7 Other polymers [i](#)

There are no such residues in this entry.

## 5.8 Polymer linkage issues [i](#)

There are no chain breaks in this entry.

## 6 Fit of model and data [i](#)

### 6.1 Protein, DNA and RNA chains [i](#)

In the following table, the column labelled ‘#RSRZ > 2’ contains the number (and percentage) of RSRZ outliers, followed by percent RSRZ outliers for the chain as percentile scores relative to all X-ray entries and entries of similar resolution. The OWAB column contains the minimum, median, 95<sup>th</sup> percentile and maximum values of the occupancy-weighted average B-factor per residue. The column labelled ‘Q < 0.9’ lists the number of (and percentage) of residues with an average occupancy less than 0.9.

Mol	Chain	Analysed	<RSRZ>	#RSRZ>2	OWAB(Å <sup>2</sup> )	Q<0.9
1	A	220/256 (85%)	1.23	34 (15%) 5   4	26, 40, 73, 95	0
1	B	206/256 (80%)	1.33	40 (19%) 3   2	25, 40, 73, 89	0
All	All	426/512 (83%)	1.28	74 (17%) 4   3	25, 40, 73, 95	0

The worst 5 of 74 RSRZ outliers are listed below:

Mol	Chain	Res	Type	RSRZ
1	A	141	ALA	4.6
1	B	185	SER	4.2
1	A	21	TYR	4.2
1	A	172	ASP	4.0
1	B	25	ARG	3.8

### 6.2 Non-standard residues in protein, DNA, RNA chains [i](#)

There are no non-standard protein/DNA/RNA residues in this entry.

### 6.3 Carbohydrates [i](#)

There are no oligosaccharides in this entry.

### 6.4 Ligands [i](#)

In the following table, the Atoms column lists the number of modelled atoms in the group and the number defined in the chemical component dictionary. The B-factors column lists the minimum, median, 95<sup>th</sup> percentile and maximum values of B factors of atoms in the group. The column labelled ‘Q < 0.9’ lists the number of atoms with occupancy less than 0.9.

Mol	Type	Chain	Res	Atoms	RSCC	RSR	B-factors( $\text{\AA}^2$ )	Q<0.9
3	NA	B	1248	1/1	0.64	0.23	43,43,43,43	0
4	ACY	B	1245	4/4	0.66	0.20	36,41,41,41	0
5	GOL	B	1247	6/6	0.69	0.18	37,40,43,44	0
2	SO4	B	1246	5/5	0.72	0.16	61,64,83,84	0
2	SO4	A	1245	5/5	0.79	0.14	45,49,69,71	0
4	ACY	A	1248	4/4	0.79	0.15	25,40,43,46	0
3	NA	B	1249	1/1	0.80	0.17	34,34,34,34	0
3	NA	A	1246	1/1	0.81	0.12	37,37,37,37	0
3	NA	A	1247	1/1	0.92	0.14	28,28,28,28	0

## 6.5 Other polymers [i](#)

There are no such residues in this entry.