



wwPDB X-ray Structure Validation Summary Report ⓘ

Mar 5, 2026 – 04:44 PM UTC

PDB ID : 3GL2 / pdb_00003gl2
Title : Crystal structure of dicamba monooxygenase bound to dicamba
Authors : Wilson, M.A.; Dumitru, R.; Jiang, W.Z.; Weeks, D.P.
Deposited on : 2009-03-11
Resolution : 2.10 Å(reported)

This is a wwPDB X-ray Structure Validation Summary Report for a publicly released PDB entry.

We welcome your comments at validation@mail.wwpdb.org

A user guide is available at

<https://www.wwpdb.org/validation/2017/XrayValidationReportHelp>

with specific help available everywhere you see the ⓘ symbol.

The types of validation reports are described at

<http://www.wwpdb.org/validation/2017/FAQs#types>.

The following versions of software and data (see [references ⓘ](#)) were used in the production of this report:

MolProbity : 4-5-2 with Phenix2.0
Mogul : 2022.3.0, CSD as543be (2022)
Xtriage (Phenix) : 2.0
EDS : 3.0
Percentile statistics : 20250101.v01 (using entries in the PDB archive January 1st 2025)
CCP4 : 9.0.010 (Gargrove)
Density-Fitness : 1.0.12
Ideal geometry (proteins) : Engh & Huber (2001)
Ideal geometry (DNA, RNA) : Parkinson et al. (1996)
Validation Pipeline (wwPDB-VP) : 2.49

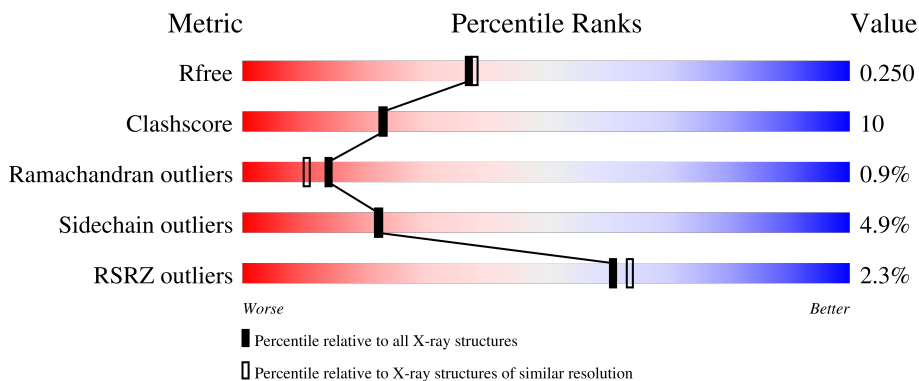
1 Overall quality at a glance

The following experimental techniques were used to determine the structure:

X-RAY DIFFRACTION

The reported resolution of this entry is 2.10 Å.

Percentile scores (ranging between 0-100) for global validation metrics of the entry are shown in the following graphic. The table shows the number of entries on which the scores are based.



Metric	Whole archive (#Entries)	Similar resolution (#Entries, resolution range(Å))
R_{free}	180053	6658 (2.10-2.10)
Clashscore	190562	7164 (2.10-2.10)
Ramachandran outliers	187476	7099 (2.10-2.10)
Sidechain outliers	187428	7100 (2.10-2.10)
RSRZ outliers	180081	6662 (2.10-2.10)

The table below summarises the geometric issues observed across the polymeric chains and their fit to the electron density. The red, orange, yellow and green segments of the lower bar indicate the fraction of residues that contain outliers for ≥ 3 , 2, 1 and 0 types of geometric quality criteria respectively. A grey segment represents the fraction of residues that are not modelled. The numeric value for each fraction is indicated below the corresponding segment, with a dot representing fractions $\leq 5\%$. The upper red bar (where present) indicates the fraction of residues that have poor fit to the electron density. The numeric value is given above the bar.

Mol	Chain	Length	Quality of chain
1	A	349	 83% 14% 5% 2% 10%
1	B	349	 73% 18% 5% 2% 10%
1	C	349	 74% 14% 5% 2% 10%

2 Entry composition i

There are 5 unique types of molecules in this entry. The entry contains 8156 atoms, of which 0 are hydrogens and 0 are deuteriums.

In the tables below, the ZeroOcc column contains the number of atoms modelled with zero occupancy, the AltConf column contains the number of residues with at least one atom in alternate conformation and the Trace column contains the number of residues modelled with at most 2 atoms.

- Molecule 1 is a protein called DdmC.

Mol	Chain	Residues	Atoms					ZeroOcc	AltConf	Trace
			Total	C	N	O	S			
1	A	340	Total 2633	C 1659	N 473	O 488	S 13	0	0	0
1	B	334	Total 2590	C 1634	N 463	O 480	S 13	0	0	0
1	C	315	Total 2440	C 1545	N 428	O 454	S 13	0	1	0

There are 33 discrepancies between the modelled and reference sequences:

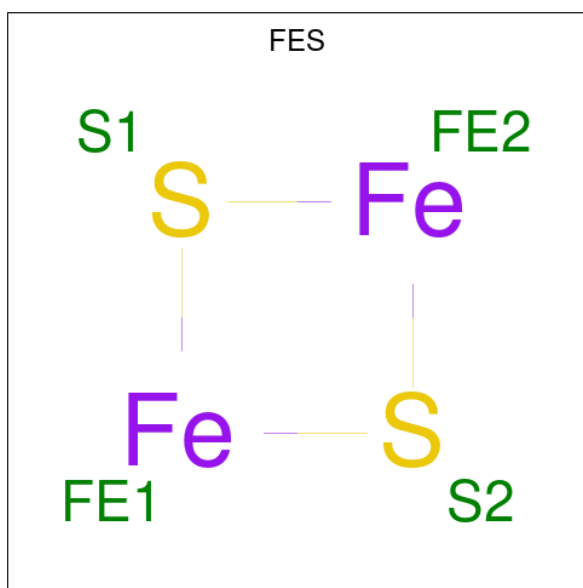
Chain	Residue	Modelled	Actual	Comment	Reference
A	1	MET	-	insertion	UNP Q5S3I3
A	2	ALA	-	insertion	UNP Q5S3I3
A	341	ARG	-	insertion	UNP Q5S3I3
A	342	LEU	-	expression tag	UNP Q5S3I3
A	343	GLU	-	expression tag	UNP Q5S3I3
A	344	HIS	-	expression tag	UNP Q5S3I3
A	345	HIS	-	expression tag	UNP Q5S3I3
A	346	HIS	-	expression tag	UNP Q5S3I3
A	347	HIS	-	expression tag	UNP Q5S3I3
A	348	HIS	-	expression tag	UNP Q5S3I3
A	349	HIS	-	expression tag	UNP Q5S3I3
B	1	MET	-	insertion	UNP Q5S3I3
B	2	ALA	-	insertion	UNP Q5S3I3
B	341	ARG	-	insertion	UNP Q5S3I3
B	342	LEU	-	expression tag	UNP Q5S3I3
B	343	GLU	-	expression tag	UNP Q5S3I3
B	344	HIS	-	expression tag	UNP Q5S3I3
B	345	HIS	-	expression tag	UNP Q5S3I3
B	346	HIS	-	expression tag	UNP Q5S3I3
B	347	HIS	-	expression tag	UNP Q5S3I3
B	348	HIS	-	expression tag	UNP Q5S3I3
B	349	HIS	-	expression tag	UNP Q5S3I3
C	1	MET	-	insertion	UNP Q5S3I3

Continued on next page...

Continued from previous page...

Chain	Residue	Modelled	Actual	Comment	Reference
C	2	ALA	-	insertion	UNP Q5S3I3
C	341	ARG	-	insertion	UNP Q5S3I3
C	342	LEU	-	expression tag	UNP Q5S3I3
C	343	GLU	-	expression tag	UNP Q5S3I3
C	344	HIS	-	expression tag	UNP Q5S3I3
C	345	HIS	-	expression tag	UNP Q5S3I3
C	346	HIS	-	expression tag	UNP Q5S3I3
C	347	HIS	-	expression tag	UNP Q5S3I3
C	348	HIS	-	expression tag	UNP Q5S3I3
C	349	HIS	-	expression tag	UNP Q5S3I3

- Molecule 2 is FE2/S2 (INORGANIC) CLUSTER (CCD ID: FES) (formula: Fe₂S₂).



Mol	Chain	Residues	Atoms	ZeroOcc	AltConf
2	A	1	Total Fe S 4 2 2	0	0
2	B	1	Total Fe S 4 2 2	0	0
2	C	1	Total Fe S 4 2 2	0	0

- Molecule 3 is FE (III) ION (CCD ID: FE) (formula: Fe).

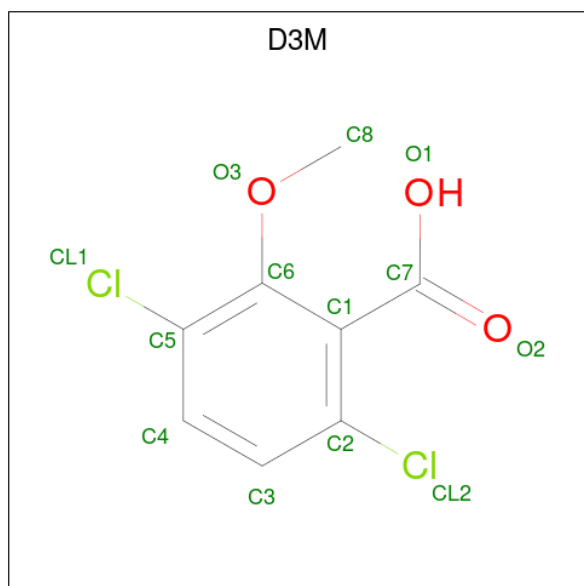
Mol	Chain	Residues	Atoms	ZeroOcc	AltConf
3	A	1	Total Fe 1 1	0	0

Continued on next page...

Continued from previous page...

Mol	Chain	Residues	Atoms	ZeroOcc	AltConf
3	B	1	Total Fe 1 1	0	0

- Molecule 4 is 3,6-dichloro-2-methoxybenzoic acid (CCD ID: D3M) (formula: $C_8H_6Cl_2O_3$).



Mol	Chain	Residues	Atoms	ZeroOcc	AltConf
4	A	1	Total C Cl O 13 8 2 3	0	0
4	B	1	Total C Cl O 13 8 2 3	0	0

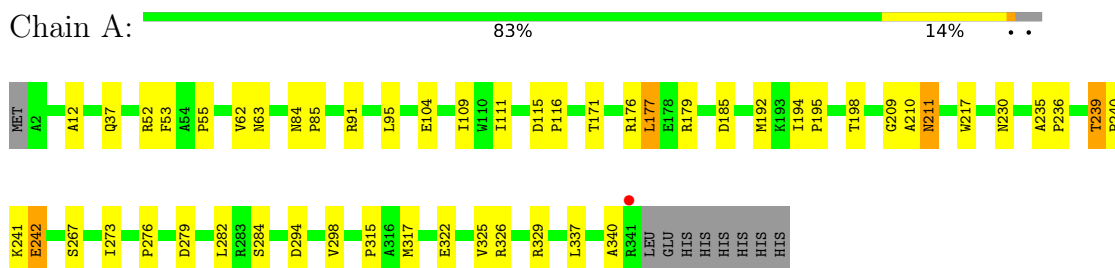
- Molecule 5 is water.

Mol	Chain	Residues	Atoms	ZeroOcc	AltConf
5	A	155	Total O 155 155	0	0
5	B	142	Total O 142 142	0	0
5	C	156	Total O 156 156	0	0

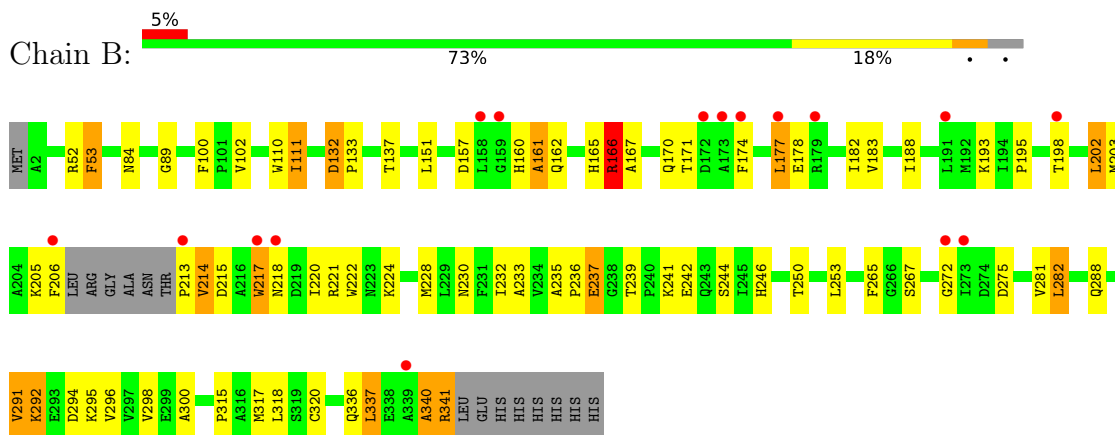
3 Residue-property plots [i](#)

These plots are drawn for all protein, RNA, DNA and oligosaccharide chains in the entry. The first graphic for a chain summarises the proportions of the various outlier classes displayed in the second graphic. The second graphic shows the sequence view annotated by issues in geometry and electron density. Residues are color-coded according to the number of geometric quality criteria for which they contain at least one outlier: green = 0, yellow = 1, orange = 2 and red = 3 or more. A red dot above a residue indicates a poor fit to the electron density ($RSRZ > 2$). Stretches of 2 or more consecutive residues without any outlier are shown as a green connector. Residues present in the sample, but not in the model, are shown in grey.

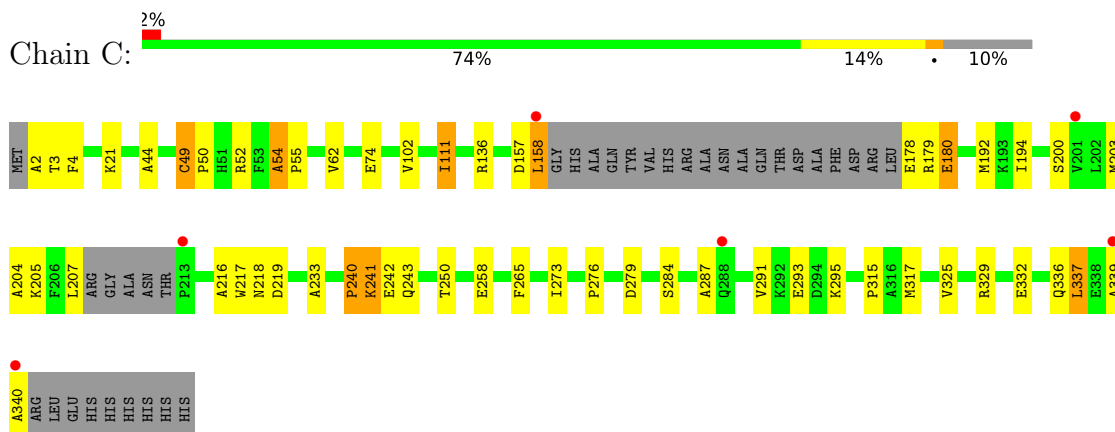
• Molecule 1: DdmC



• Molecule 1: DdmC



• Molecule 1: DdmC



4 Data and refinement statistics

Property	Value	Source
Space group	P 32	Depositor
Cell constants a, b, c, α , β , γ	81.32Å 81.32Å 159.28Å 90.00° 90.00° 120.00°	Depositor
Resolution (Å)	36.00 – 2.10 36.00 – 2.10	Depositor EDS
% Data completeness (in resolution range)	98.4 (36.00-2.10) 98.4 (36.00-2.10)	Depositor EDS
R_{merge}	0.07	Depositor
R_{sym}	(Not available)	Depositor
$\langle I/\sigma(I) \rangle$ ¹	2.48 (at 2.10Å)	Xtrriage
Refinement program	REFMAC 5.2.0019	Depositor
R, R_{free}	0.190 , 0.247 0.194 , 0.250	Depositor DCC
R_{free} test set	3338 reflections (4.97%)	wwPDB-VP
Wilson B-factor (Å ²)	49.9	Xtrriage
Anisotropy	0.003	Xtrriage
Bulk solvent k_{sol} (e/Å ³), B_{sol} (Å ²)	0.32 , 45.1	EDS
L-test for twinning ²	$\langle L \rangle = 0.51$, $\langle L^2 \rangle = 0.35$	Xtrriage
Estimated twinning fraction	0.000 for -h,-k,l 0.034 for h,-h-k,-l 0.013 for -k,-h,-l	Xtrriage
F_o, F_c correlation	0.97	EDS
Total number of atoms	8156	wwPDB-VP
Average B, all atoms (Å ²)	62.0	wwPDB-VP

Xtrriage's analysis on translational NCS is as follows: *The largest off-origin peak in the Patterson function is 3.15% of the height of the origin peak. No significant pseudotranslation is detected.*

¹Intensities estimated from amplitudes.

²Theoretical values of $\langle |L| \rangle$, $\langle L^2 \rangle$ for acentric reflections are 0.5, 0.333 respectively for untwinned datasets, and 0.375, 0.2 for perfectly twinned datasets.

5 Model quality [i](#)

5.1 Standard geometry [i](#)

Bond lengths and bond angles in the following residue types are not validated in this section: FE, D3M, FES

The Z score for a bond length (or angle) is the number of standard deviations the observed value is removed from the expected value. A bond length (or angle) with $|Z| > 5$ is considered an outlier worth inspection. RMSZ is the root-mean-square of all Z scores of the bond lengths (or angles).

Mol	Chain	Bond lengths		Bond angles	
		RMSZ	# Z >5	RMSZ	# Z >5
1	A	0.59	0/2698	0.74	0/3674
1	B	0.60	0/2654	0.77	4/3612 (0.1%)
1	C	0.58	0/2502	0.78	4/3405 (0.1%)
All	All	0.59	0/7854	0.76	8/10691 (0.1%)

Chiral center outliers are detected by calculating the chiral volume of a chiral center and verifying if the center is modelled as a planar moiety or with the opposite hand. A planarity outlier is detected by checking planarity of atoms in a peptide group, atoms in a mainchain group or atoms of a sidechain that are expected to be planar.

Mol	Chain	#Chirality outliers	#Planarity outliers
1	A	0	1
1	B	0	2
1	C	0	1
All	All	0	4

There are no bond length outliers.

The worst 5 of 8 bond angle outliers are listed below:

Mol	Chain	Res	Type	Atoms	Z	Observed(°)	Ideal(°)
1	B	239	THR	CA-C-N	6.45	126.84	119.93
1	B	239	THR	C-N-CA	6.45	126.84	119.93
1	C	49	CYS	CA-C-N	5.84	125.70	119.28
1	C	49	CYS	C-N-CA	5.84	125.70	119.28
1	C	54	ALA	CA-C-N	5.30	126.47	119.84

There are no chirality outliers.

All (4) planarity outliers are listed below:

Mol	Chain	Res	Type	Group
1	A	340	ALA	Peptide
1	B	205	LYS	Peptide
1	B	213	PRO	Peptide
1	C	339	ALA	Peptide

5.2 Too-close contacts [i](#)

In the following table, the Non-H and H(model) columns list the number of non-hydrogen atoms and hydrogen atoms in the chain respectively. The H(added) column lists the number of hydrogen atoms added and optimized by MolProbity. The Clashes column lists the number of clashes within the asymmetric unit, whereas Symm-Clashes lists symmetry-related clashes.

Mol	Chain	Non-H	H(model)	H(added)	Clashes	Symm-Clashes
1	A	2633	0	2566	36	0
1	B	2590	0	2521	81	0
1	C	2440	0	2386	42	0
2	A	4	0	0	0	0
2	B	4	0	0	0	0
2	C	4	0	0	0	0
3	A	1	0	0	0	0
3	B	1	0	0	0	0
4	A	13	0	5	0	0
4	B	13	0	5	0	0
5	A	155	0	0	3	0
5	B	142	0	0	5	0
5	C	156	0	0	7	0
All	All	8156	0	7483	156	0

The all-atom clashscore is defined as the number of clashes found per 1000 atoms (including hydrogen atoms). The all-atom clashscore for this structure is 10.

The worst 5 of 156 close contacts within the same asymmetric unit are listed below, sorted by their clash magnitude.

Atom-1	Atom-2	Interatomic distance (Å)	Clash overlap (Å)
1:A:236:PRO:O	1:A:239:THR:HG23	1.42	1.20
1:C:158:LEU:C	1:C:158:LEU:CD1	2.19	1.12
1:B:174:PHE:HA	1:B:177:LEU:CD2	1.85	1.07
1:B:174:PHE:HA	1:B:177:LEU:HD21	1.38	1.05
1:B:291:VAL:O	1:B:291:VAL:HG12	1.54	1.05

There are no symmetry-related clashes.

5.3 Torsion angles [i](#)

5.3.1 Protein backbone [i](#)

In the following table, the Percentiles column shows the percent Ramachandran outliers of the chain as a percentile score with respect to all X-ray entries followed by that with respect to entries of similar resolution.

The Analysed column shows the number of residues for which the backbone conformation was analysed, and the total number of residues.

Mol	Chain	Analysed	Favoured	Allowed	Outliers	Percentiles	
1	A	338/349 (97%)	324 (96%)	14 (4%)	0	100	100
1	B	330/349 (95%)	303 (92%)	20 (6%)	7 (2%)	5	2
1	C	310/349 (89%)	292 (94%)	16 (5%)	2 (1%)	21	18
All	All	978/1047 (93%)	919 (94%)	50 (5%)	9 (1%)	14	10

5 of 9 Ramachandran outliers are listed below:

Mol	Chain	Res	Type
1	B	166	ARG
1	B	340	ALA
1	B	237	GLU
1	B	292	LYS
1	C	180	GLU

5.3.2 Protein sidechains [i](#)

In the following table, the Percentiles column shows the percent sidechain outliers of the chain as a percentile score with respect to all X-ray entries followed by that with respect to entries of similar resolution.

The Analysed column shows the number of residues for which the sidechain conformation was analysed, and the total number of residues.

Mol	Chain	Analysed	Rotameric	Outliers	Percentiles	
1	A	275/284 (97%)	264 (96%)	11 (4%)	28	29
1	B	271/284 (95%)	254 (94%)	17 (6%)	16	14
1	C	258/284 (91%)	247 (96%)	11 (4%)	26	27
All	All	804/852 (94%)	765 (95%)	39 (5%)	22	22

5 of 39 residues with a non-rotameric sidechain are listed below:

Mol	Chain	Res	Type
1	C	3	THR
1	C	205	LYS
1	C	21	LYS
1	C	158	LEU
1	C	241	LYS

Sometimes sidechains can be flipped to improve hydrogen bonding and reduce clashes. 5 of 6 such sidechains are listed below:

Mol	Chain	Res	Type
1	B	168	ASN
1	B	223	ASN
1	C	288	GLN
1	A	154	ASN
1	A	37	GLN

5.3.3 RNA [i](#)

There are no RNA molecules in this entry.

5.4 Non-standard residues in protein, DNA, RNA chains [i](#)

There are no non-standard protein/DNA/RNA residues in this entry.

5.5 Carbohydrates [i](#)

There are no oligosaccharides in this entry.

5.6 Ligand geometry [i](#)

Of 7 ligands modelled in this entry, 2 are monoatomic - leaving 5 for Mogul analysis.

In the following table, the Counts columns list the number of bonds (or angles) for which Mogul statistics could be retrieved, the number of bonds (or angles) that are observed in the model and the number of bonds (or angles) that are defined in the Chemical Component Dictionary. The Link column lists molecule types, if any, to which the group is linked. The Z score for a bond length (or angle) is the number of standard deviations the observed value is removed from the expected value. A bond length (or angle) with $|Z| > 2$ is considered an outlier worth inspection. RMSZ is the root-mean-square of all Z scores of the bond lengths (or angles).

Mol	Type	Chain	Res	Link	Bond lengths			Bond angles		
					Counts	RMSZ	# Z > 2	Counts	RMSZ	# Z > 2
4	D3M	B	600	-	13,13,13	1.19	2 (15%)	18,18,18	1.03	2 (11%)
4	D3M	A	600	-	13,13,13	1.18	2 (15%)	18,18,18	0.87	0
2	FES	B	500	1	0,4,4	-	-	-	-	-
2	FES	C	500	1	0,4,4	-	-	-	-	-
2	FES	A	500	1	0,4,4	-	-	-	-	-

In the following table, the Chirals column lists the number of chiral outliers, the number of chiral centers analysed, the number of these observed in the model and the number defined in the Chemical Component Dictionary. Similar counts are reported in the Torsion and Rings columns. '-' means no outliers of that kind were identified.

Mol	Type	Chain	Res	Link	Chirals	Torsions	Rings
4	D3M	B	600	-	-	0/6/6/6	0/1/1/1
4	D3M	A	600	-	-	0/6/6/6	0/1/1/1
2	FES	B	500	1	-	-	0/1/1/1
2	FES	C	500	1	-	-	0/1/1/1
2	FES	A	500	1	-	-	0/1/1/1

All (4) bond length outliers are listed below:

Mol	Chain	Res	Type	Atoms	Z	Observed(Å)	Ideal(Å)
4	B	600	D3M	C5-CL1	2.79	1.80	1.73
4	A	600	D3M	C5-CL1	2.30	1.79	1.73
4	B	600	D3M	C2-CL2	2.25	1.78	1.73
4	A	600	D3M	C2-CL2	2.07	1.78	1.73

All (2) bond angle outliers are listed below:

Mol	Chain	Res	Type	Atoms	Z	Observed(°)	Ideal(°)
4	B	600	D3M	C8-O3-C6	3.01	122.92	114.74
4	B	600	D3M	C6-C5-CL1	2.19	121.28	118.40

There are no chirality outliers.

There are no torsion outliers.

There are no ring outliers.

No monomer is involved in short contacts.

5.7 Other polymers [i](#)

There are no such residues in this entry.

5.8 Polymer linkage issues [i](#)

There are no chain breaks in this entry.

6 Fit of model and data [i](#)

6.1 Protein, DNA and RNA chains [i](#)

In the following table, the column labelled ‘#RSRZ > 2’ contains the number (and percentage) of RSRZ outliers, followed by percent RSRZ outliers for the chain as percentile scores relative to all X-ray entries and entries of similar resolution. The OWAB column contains the minimum, median, 95th percentile and maximum values of the occupancy-weighted average B-factor per residue. The column labelled ‘Q < 0.9’ lists the number of (and percentage) of residues with an average occupancy less than 0.9.

Mol	Chain	Analysed	<RSRZ>	#RSRZ>2	OWAB(Å ²)	Q<0.9
1	A	340/349 (97%)	0.02	1 (0%) 90 91	41, 56, 86, 110	0
1	B	334/349 (95%)	0.21	16 (4%) 35 38	39, 57, 112, 138	0
1	C	315/349 (90%)	0.17	6 (1%) 66 69	37, 55, 116, 145	1 (0%)
All	All	989/1047 (94%)	0.13	23 (2%) 61 64	37, 56, 107, 145	1 (0%)

The worst 5 of 23 RSRZ outliers are listed below:

Mol	Chain	Res	Type	RSRZ
1	C	201	VAL	4.5
1	C	339	ALA	4.3
1	B	159	GLY	4.2
1	C	158	LEU	4.0
1	C	213	PRO	3.9

6.2 Non-standard residues in protein, DNA, RNA chains [i](#)

There are no non-standard protein/DNA/RNA residues in this entry.

6.3 Carbohydrates [i](#)

There are no oligosaccharides in this entry.

6.4 Ligands [i](#)

In the following table, the Atoms column lists the number of modelled atoms in the group and the number defined in the chemical component dictionary. The B-factors column lists the minimum, median, 95th percentile and maximum values of B factors of atoms in the group. The column labelled ‘Q < 0.9’ lists the number of atoms with occupancy less than 0.9.

Mol	Type	Chain	Res	Atoms	RSCC	RSR	B-factors(\AA^2)	Q<0.9
4	D3M	B	600	13/13	0.91	0.09	57,72,76,79	0
4	D3M	A	600	13/13	0.95	0.06	46,53,60,69	0
3	FE	B	501	1/1	0.98	0.05	64,64,64,64	0
2	FES	A	500	4/4	0.99	0.04	46,47,49,53	0
2	FES	C	500	4/4	0.99	0.03	41,43,44,50	0
3	FE	A	501	1/1	0.99	0.04	48,48,48,48	0
2	FES	B	500	4/4	1.00	0.03	41,44,44,47	0

6.5 Other polymers [i](#)

There are no such residues in this entry.