



Full wwPDB X-ray Structure Validation Report ⓘ

Mar 10, 2026 – 07:11 PM UTC

PDB ID : 4GOM / pdb_00004gom
Title : Crystal Structure of E. coli DNA Adenine Methyltransferase in Complex with Aza-SAM
Authors : Harmer, J.E.; Roach, P.L.
Deposited on : 2012-08-20
Resolution : 2.45 Å(reported)

This is a Full wwPDB X-ray Structure Validation Report for a publicly released PDB entry.

We welcome your comments at validation@mail.wwpdb.org

A user guide is available at

<https://www.wwpdb.org/validation/2017/XrayValidationReportHelp>

with specific help available everywhere you see the ⓘ symbol.

The types of validation reports are described at

<http://www.wwpdb.org/validation/2017/FAQs#types>.

The following versions of software and data (see [references ⓘ](#)) were used in the production of this report:

MolProbity : 4-5-2 with Phenix2.0
Mogul : 2022.3.0, CSD as543be (2022)
Xtrriage (Phenix) : 2.0
EDS : 3.0
Buster-report : wwPDB partial adaption of 1.1.7 (2018)
Percentile statistics : 20250101.v01 (using entries in the PDB archive January 1st 2025)
CCP4 : 9.0.010 (Gargrove)
Density-Fitness : 1.0.12
Ideal geometry (proteins) : Engh & Huber (2001)
Ideal geometry (DNA, RNA) : Parkinson et al. (1996)
Validation Pipeline (wwPDB-VP) : 2.49

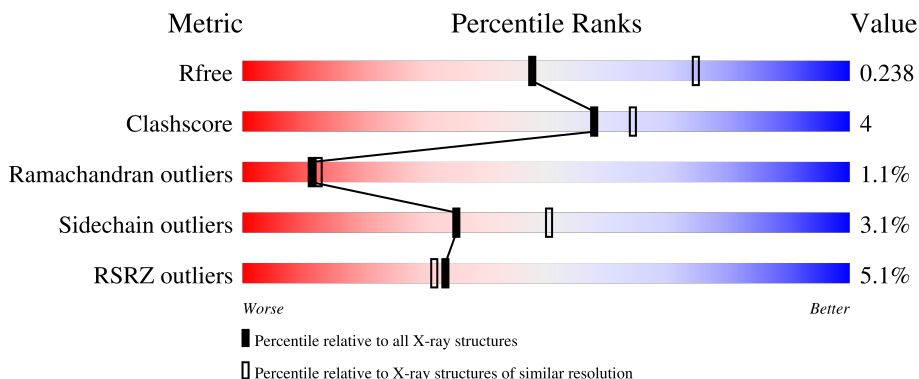
1 Overall quality at a glance

The following experimental techniques were used to determine the structure:

X-RAY DIFFRACTION

The reported resolution of this entry is 2.45 Å.

Percentile scores (ranging between 0-100) for global validation metrics of the entry are shown in the following graphic. The table shows the number of entries on which the scores are based.



Metric	Whole archive (#Entries)	Similar resolution (#Entries, resolution range(Å))
R_{free}	180053	1190 (2.46-2.46)
Clashscore	190562	1229 (2.46-2.46)
Ramachandran outliers	187476	1218 (2.46-2.46)
Sidechain outliers	187428	1218 (2.46-2.46)
RSRZ outliers	180081	1190 (2.46-2.46)

The table below summarises the geometric issues observed across the polymeric chains and their fit to the electron density. The red, orange, yellow and green segments of the lower bar indicate the fraction of residues that contain outliers for ≥ 3 , 2, 1 and 0 types of geometric quality criteria respectively. A grey segment represents the fraction of residues that are not modelled. The numeric value for each fraction is indicated below the corresponding segment, with a dot representing fractions $\leq 5\%$. The upper red bar (where present) indicates the fraction of residues that have poor fit to the electron density. The numeric value is given above the bar.

Mol	Chain	Length	Quality of chain
1	D	278	 4% 74% 11% • 13%
1	E	278	 5% 77% 8% • 12%
1	F	278	 5% 80% 6% • 12%

2 Entry composition [i](#)

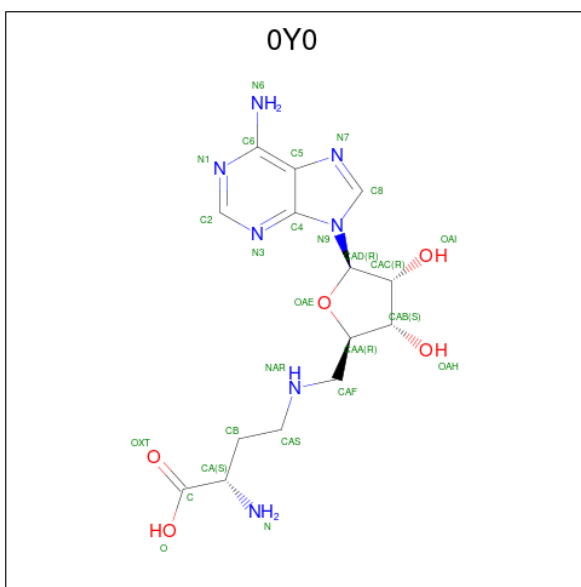
There are 3 unique types of molecules in this entry. The entry contains 6065 atoms, of which 0 are hydrogens and 0 are deuteriums.

In the tables below, the ZeroOcc column contains the number of atoms modelled with zero occupancy, the AltConf column contains the number of residues with at least one atom in alternate conformation and the Trace column contains the number of residues modelled with at most 2 atoms.

- Molecule 1 is a protein called DNA adenine methylase.

Mol	Chain	Residues	Atoms					ZeroOcc	AltConf	Trace
			Total	C	N	O	S			
1	D	243	Total	C	N	O	S	0	0	0
			1954	1266	325	355	8			
1	E	244	Total	C	N	O	S	0	0	0
			1941	1256	325	352	8			
1	F	244	Total	C	N	O	S	3	0	0
			1961	1271	328	354	8			

- Molecule 2 is 5'-{[(3S)-3-amino-3-carboxypropyl]amino}-5'-deoxyadenosine (CCD ID: 0Y0) (formula: C₁₄H₂₁N₇O₅).



Mol	Chain	Residues	Atoms				ZeroOcc	AltConf
			Total	C	N	O		
2	D	1	Total	C	N	O	0	0
			26	14	7	5		
2	E	1	Total	C	N	O	0	0
			26	14	7	5		
2	F	1	Total	C	N	O	0	0
			26	14	7	5		

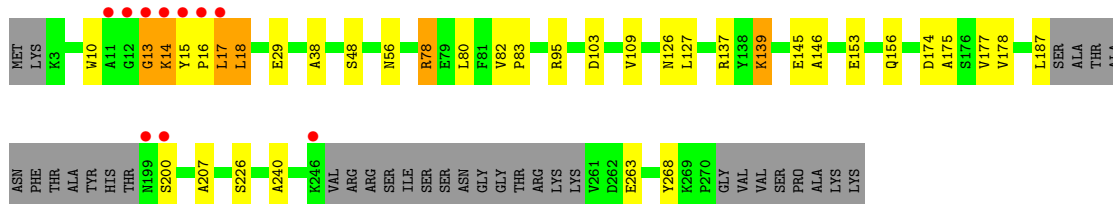
- Molecule 3 is water.

Mol	Chain	Residues	Atoms	ZeroOcc	AltConf
3	D	66	Total O 66 66	0	0
3	E	33	Total O 33 33	0	0
3	F	32	Total O 32 32	0	0

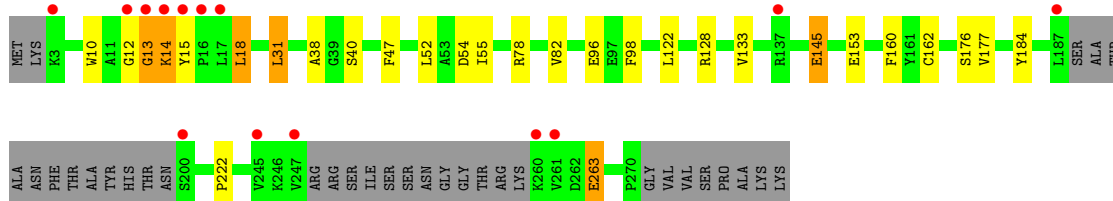
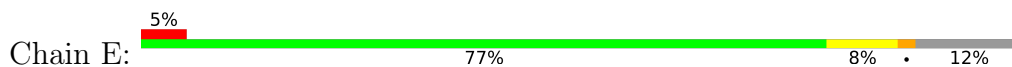
3 Residue-property plots [i](#)

These plots are drawn for all protein, RNA, DNA and oligosaccharide chains in the entry. The first graphic for a chain summarises the proportions of the various outlier classes displayed in the second graphic. The second graphic shows the sequence view annotated by issues in geometry and electron density. Residues are color-coded according to the number of geometric quality criteria for which they contain at least one outlier: green = 0, yellow = 1, orange = 2 and red = 3 or more. A red dot above a residue indicates a poor fit to the electron density ($RSRZ > 2$). Stretches of 2 or more consecutive residues without any outlier are shown as a green connector. Residues present in the sample, but not in the model, are shown in grey.

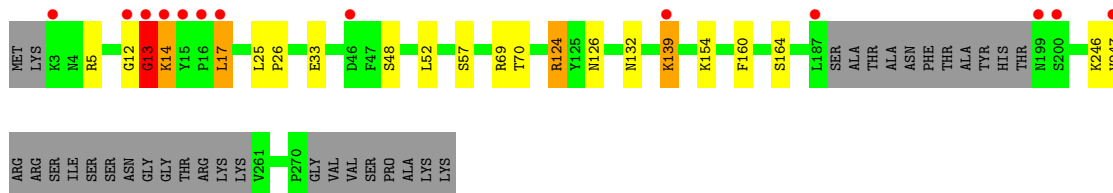
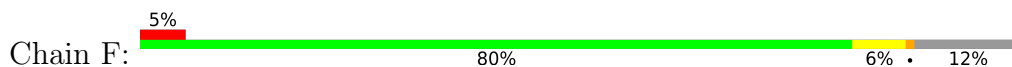
- Molecule 1: DNA adenine methylase



- Molecule 1: DNA adenine methylase



- Molecule 1: DNA adenine methylase



4 Data and refinement statistics i

Property	Value	Source
Space group	P 31 2 1	Depositor
Cell constants a, b, c, α , β , γ	161.04Å 161.04Å 95.29Å 90.00° 90.00° 120.00°	Depositor
Resolution (Å)	29.55 – 2.45 29.55 – 2.45	Depositor EDS
% Data completeness (in resolution range)	99.8 (29.55-2.45) 99.3 (29.55-2.45)	Depositor EDS
R_{merge}	(Not available)	Depositor
R_{sym}	0.07	Depositor
$\langle I/\sigma(I) \rangle$ ¹	2.95 (at 2.45Å)	Xtrriage
Refinement program	REFMAC	Depositor
R, R_{free}	0.209 , 0.248 0.201 , 0.238	Depositor DCC
R_{free} test set	2653 reflections (5.05%)	wwPDB-VP
Wilson B-factor (Å ²)	49.1	Xtrriage
Anisotropy	0.143	Xtrriage
Bulk solvent k_{sol} (e/Å ³), B_{sol} (Å ²)	0.34 , 33.0	EDS
L-test for twinning ²	$\langle L \rangle = 0.52$, $\langle L^2 \rangle = 0.36$	Xtrriage
Estimated twinning fraction	0.000 for -h,-k,l	Xtrriage
F_o, F_c correlation	0.95	EDS
Total number of atoms	6065	wwPDB-VP
Average B, all atoms (Å ²)	44.0	wwPDB-VP

Xtrriage's analysis on translational NCS is as follows: *The largest off-origin peak in the Patterson function is 2.87% of the height of the origin peak. No significant pseudotranslation is detected.*

¹Intensities estimated from amplitudes.

²Theoretical values of $\langle |L| \rangle$, $\langle L^2 \rangle$ for acentric reflections are 0.5, 0.333 respectively for untwinned datasets, and 0.375, 0.2 for perfectly twinned datasets.

5 Model quality [i](#)

5.1 Standard geometry [i](#)

Bond lengths and bond angles in the following residue types are not validated in this section: 0Y0

The Z score for a bond length (or angle) is the number of standard deviations the observed value is removed from the expected value. A bond length (or angle) with $|Z| > 5$ is considered an outlier worth inspection. RMSZ is the root-mean-square of all Z scores of the bond lengths (or angles).

Mol	Chain	Bond lengths		Bond angles	
		RMSZ	# Z >5	RMSZ	# Z >5
1	D	1.38	7/2008 (0.3%)	1.17	4/2731 (0.1%)
1	E	1.27	1/1996 (0.1%)	1.18	7/2719 (0.3%)
1	F	1.27	0/2016	1.16	4/2742 (0.1%)
All	All	1.31	8/6020 (0.1%)	1.17	15/8192 (0.2%)

Chiral center outliers are detected by calculating the chiral volume of a chiral center and verifying if the center is modelled as a planar moiety or with the opposite hand. A planarity outlier is detected by checking planarity of atoms in a peptide group, atoms in a mainchain group or atoms of a sidechain that are expected to be planar.

Mol	Chain	#Chirality outliers	#Planarity outliers
1	D	0	1
1	E	0	1
All	All	0	2

All (8) bond length outliers are listed below:

Mol	Chain	Res	Type	Atoms	Z	Observed(Å)	Ideal(Å)
1	D	103	ASP	CA-C	6.59	1.59	1.52
1	D	146	ALA	CA-CB	6.28	1.63	1.53
1	D	207	ALA	CA-CB	6.20	1.62	1.53
1	D	126	ASN	CA-C	5.98	1.61	1.53
1	D	127	LEU	N-CA	5.79	1.53	1.46
1	D	137	ARG	CA-C	5.79	1.60	1.53
1	D	95	ARG	CA-C	5.68	1.60	1.52
1	E	55	ILE	CA-CB	5.37	1.61	1.54

All (15) bond angle outliers are listed below:

Mol	Chain	Res	Type	Atoms	Z	Observed(°)	Ideal(°)
1	E	82	VAL	CA-C-N	-9.57	107.87	119.84
1	E	82	VAL	C-N-CA	-9.57	107.87	119.84
1	D	103	ASP	CB-CA-C	8.08	119.06	109.85
1	E	153	GLU	N-CA-C	-7.90	102.75	111.36
1	F	13	GLY	N-CA-C	-6.69	97.32	113.18
1	D	153	GLU	N-CA-C	-6.34	104.37	111.28
1	F	33	GLU	CA-C-N	6.11	125.73	119.56
1	F	33	GLU	C-N-CA	6.11	125.73	119.56
1	E	40	SER	N-CA-C	5.80	118.35	111.33
1	E	98	PHE	N-CA-C	-5.79	104.88	111.07
1	D	156	GLN	N-CA-C	-5.77	106.20	113.18
1	E	18	LEU	N-CA-C	5.76	117.23	111.07
1	D	78	ARG	N-CA-C	-5.23	105.66	111.36
1	E	145	GLU	N-CA-C	5.18	117.34	111.02
1	F	57	SER	N-CA-C	5.13	117.61	111.71

There are no chirality outliers.

All (2) planarity outliers are listed below:

Mol	Chain	Res	Type	Group
1	D	13	GLY	Peptide
1	E	13	GLY	Peptide

5.2 Too-close contacts [i](#)

In the following table, the Non-H and H(model) columns list the number of non-hydrogen atoms and hydrogen atoms in the chain respectively. The H(added) column lists the number of hydrogen atoms added and optimized by MolProbity. The Clashes column lists the number of clashes within the asymmetric unit, whereas Symm-Clashes lists symmetry-related clashes.

Mol	Chain	Non-H	H(model)	H(added)	Clashes	Symm-Clashes
1	D	1954	0	1836	19	0
1	E	1941	0	1786	14	0
1	F	1961	0	1837	18	0
2	D	26	0	18	0	0
2	E	26	0	19	0	0
2	F	26	0	19	0	0
3	D	66	0	0	0	0
3	E	33	0	0	2	0
3	F	32	0	0	1	0
All	All	6065	0	5515	51	0

The all-atom clashscore is defined as the number of clashes found per 1000 atoms (including hydrogen atoms). The all-atom clashscore for this structure is 4.

All (51) close contacts within the same asymmetric unit are listed below, sorted by their clash magnitude.

Atom-1	Atom-2	Interatomic distance (Å)	Clash overlap (Å)
1:F:12:GLY:O	1:F:14:LYS:N	1.80	1.14
1:D:139:LYS:CD	1:D:139:LYS:H	1.68	1.01
1:F:12:GLY:C	1:F:14:LYS:N	2.17	1.01
1:F:12:GLY:C	1:F:14:LYS:H	1.69	1.00
1:D:139:LYS:H	1:D:139:LYS:HD2	1.28	0.95
1:F:139:LYS:HD3	1:F:139:LYS:H	1.41	0.85
1:F:124:ARG:CG	1:F:124:ARG:HH11	1.90	0.84
1:F:124:ARG:HH11	1:F:124:ARG:HG3	1.53	0.73
1:D:17:LEU:HD11	1:D:263:GLU:HG2	1.73	0.69
1:D:139:LYS:CD	1:D:139:LYS:N	2.50	0.68
1:D:10:TRP:HB3	1:D:38:ALA:HB2	1.74	0.67
1:E:10:TRP:HB3	1:E:38:ALA:HB2	1.76	0.66
1:E:78:ARG:NH1	1:E:145:GLU:OE2	2.26	0.66
1:D:15:TYR:O	1:D:17:LEU:N	2.32	0.63
1:E:78:ARG:HH12	1:E:145:GLU:CD	2.10	0.60
1:F:14:LYS:HB3	1:F:17:LEU:HD21	1.84	0.59
1:E:78:ARG:NH1	1:E:145:GLU:CD	2.62	0.57
1:F:124:ARG:HH11	1:F:124:ARG:HG2	1.67	0.57
1:E:96:GLU:HG3	3:E:433:HOH:O	2.06	0.55
1:D:80:LEU:HD22	1:D:109:VAL:HG12	1.91	0.53
1:F:124:ARG:HG3	1:F:124:ARG:NH1	2.23	0.53
1:E:128:ARG:NH1	3:E:429:HOH:O	2.24	0.52
1:F:164:SER:OG	3:F:411:HOH:O	2.19	0.51
1:D:177:VAL:HG12	1:D:178:VAL:N	2.27	0.50
1:D:78:ARG:HH21	1:D:145:GLU:CD	2.19	0.50
1:F:12:GLY:O	1:F:14:LYS:HG2	2.12	0.50
1:D:14:LYS:C	1:D:16:PRO:HD2	2.38	0.49
1:E:52:LEU:O	1:E:160:PHE:HA	2.14	0.48
1:F:124:ARG:CG	1:F:124:ARG:NH1	2.61	0.48
1:F:13:GLY:O	1:F:14:LYS:C	2.56	0.47
1:F:246:LYS:O	1:F:247:VAL:HG13	2.15	0.47
1:F:52:LEU:O	1:F:160:PHE:HA	2.16	0.45
1:D:15:TYR:N	1:D:16:PRO:CD	2.80	0.45
1:E:184:TYR:OH	1:E:263:GLU:OE2	2.26	0.45
1:D:82:VAL:HB	1:D:83:PRO:HD2	2.00	0.44
1:E:122:LEU:O	1:E:133:VAL:HG21	2.17	0.44
1:E:177:VAL:HG22	1:E:222:PRO:HG2	2.00	0.43

Continued on next page...

Continued from previous page...

Atom-1	Atom-2	Interatomic distance (Å)	Clash overlap (Å)
1:D:29:GLU:HB2	1:D:175:ALA:HB1	2.01	0.43
1:E:31:LEU:HG	1:E:47:PHE:CE1	2.54	0.43
1:E:78:ARG:NH1	1:E:145:GLU:OE1	2.53	0.42
1:D:240:ALA:HB2	1:D:268:TYR:CE2	2.54	0.42
1:F:69:ARG:O	1:F:70:THR:C	2.63	0.42
1:E:12:GLY:O	1:E:14:LYS:N	2.53	0.42
1:F:25:LEU:HA	1:F:26:PRO:HD3	1.85	0.42
1:D:240:ALA:HB2	1:D:268:TYR:CZ	2.55	0.41
1:E:54:ASP:O	1:E:162:CYS:HA	2.21	0.41
1:D:17:LEU:O	1:D:18:LEU:C	2.64	0.41
1:D:56:ASN:OD1	1:D:56:ASN:C	2.63	0.40
1:D:177:VAL:CG1	1:D:178:VAL:N	2.83	0.40
1:F:126:ASN:OD1	1:F:126:ASN:C	2.63	0.40
1:D:14:LYS:C	1:D:16:PRO:CD	2.94	0.40

There are no symmetry-related clashes.

5.3 Torsion angles [i](#)

5.3.1 Protein backbone [i](#)

In the following table, the Percentiles column shows the percent Ramachandran outliers of the chain as a percentile score with respect to all X-ray entries followed by that with respect to entries of similar resolution.

The Analysed column shows the number of residues for which the backbone conformation was analysed, and the total number of residues.

Mol	Chain	Analysed	Favoured	Allowed	Outliers	Percentiles	
1	D	237/278 (85%)	223 (94%)	10 (4%)	4 (2%)	7	6
1	E	238/278 (86%)	224 (94%)	12 (5%)	2 (1%)	16	20
1	F	238/278 (86%)	223 (94%)	13 (6%)	2 (1%)	16	20
All	All	713/834 (86%)	670 (94%)	35 (5%)	8 (1%)	11	12

All (8) Ramachandran outliers are listed below:

Mol	Chain	Res	Type
1	F	13	GLY
1	F	14	LYS
1	D	14	LYS

Continued on next page...

Continued from previous page...

Mol	Chain	Res	Type
1	D	17	LEU
1	E	13	GLY
1	D	200	SER
1	E	14	LYS
1	D	13	GLY

5.3.2 Protein sidechains [i](#)

In the following table, the Percentiles column shows the percent sidechain outliers of the chain as a percentile score with respect to all X-ray entries followed by that with respect to entries of similar resolution.

The Analysed column shows the number of residues for which the sidechain conformation was analysed, and the total number of residues.

Mol	Chain	Analysed	Rotameric	Outliers	Percentiles	
1	D	198/239 (83%)	192 (97%)	6 (3%)	36	51
1	E	191/239 (80%)	186 (97%)	5 (3%)	40	55
1	F	197/239 (82%)	190 (96%)	7 (4%)	31	45
All	All	586/717 (82%)	568 (97%)	18 (3%)	35	50

All (18) residues with a non-rotameric sidechain are listed below:

Mol	Chain	Res	Type
1	D	18	LEU
1	D	48	SER
1	D	139	LYS
1	D	174	ASP
1	D	187	LEU
1	D	226	SER
1	E	15	TYR
1	E	18	LEU
1	E	31	LEU
1	E	176	SER
1	E	263	GLU
1	F	5	ARG
1	F	17	LEU
1	F	48	SER
1	F	124	ARG
1	F	132	ASN
1	F	139	LYS

Continued on next page...

Continued from previous page...

Mol	Chain	Res	Type
1	F	154	LYS

Sometimes sidechains can be flipped to improve hydrogen bonding and reduce clashes. All (5) such sidechains are listed below:

Mol	Chain	Res	Type
1	D	102	GLN
1	D	157	ASN
1	E	157	ASN
1	F	102	GLN
1	F	132	ASN

5.3.3 RNA [i](#)

There are no RNA molecules in this entry.

5.4 Non-standard residues in protein, DNA, RNA chains [i](#)

There are no non-standard protein/DNA/RNA residues in this entry.

5.5 Carbohydrates [i](#)

There are no oligosaccharides in this entry.

5.6 Ligand geometry [i](#)

3 ligands are modelled in this entry.

In the following table, the Counts columns list the number of bonds (or angles) for which Mogul statistics could be retrieved, the number of bonds (or angles) that are observed in the model and the number of bonds (or angles) that are defined in the Chemical Component Dictionary. The Link column lists molecule types, if any, to which the group is linked. The Z score for a bond length (or angle) is the number of standard deviations the observed value is removed from the expected value. A bond length (or angle) with $|Z| > 2$ is considered an outlier worth inspection. RMSZ is the root-mean-square of all Z scores of the bond lengths (or angles).

Mol	Type	Chain	Res	Link	Bond lengths			Bond angles		
					Counts	RMSZ	# Z > 2	Counts	RMSZ	# Z > 2
2	0Y0	E	301	-	27,28,28	1.83	6 (22%)	33,40,40	2.52	12 (36%)
2	0Y0	D	301	-	27,28,28	2.47	12 (44%)	33,40,40	2.31	10 (30%)

Mol	Type	Chain	Res	Link	Bond lengths			Bond angles		
					Counts	RMSZ	# Z > 2	Counts	RMSZ	# Z > 2
2	0Y0	F	301	-	27,28,28	1.81	5 (18%)	33,40,40	2.45	14 (42%)

In the following table, the Chirals column lists the number of chiral outliers, the number of chiral centers analysed, the number of these observed in the model and the number defined in the Chemical Component Dictionary. Similar counts are reported in the Torsion and Rings columns. '-' means no outliers of that kind were identified.

Mol	Type	Chain	Res	Link	Chirals	Torsions	Rings
2	0Y0	E	301	-	-	5/15/31/31	0/3/3/3
2	0Y0	D	301	-	-	11/15/31/31	0/3/3/3
2	0Y0	F	301	-	-	3/15/31/31	0/3/3/3

All (23) bond length outliers are listed below:

Mol	Chain	Res	Type	Atoms	Z	Observed(Å)	Ideal(Å)
2	E	301	0Y0	C6-N6	6.23	1.50	1.34
2	F	301	0Y0	C6-N6	5.59	1.48	1.34
2	D	301	0Y0	C6-N6	5.20	1.47	1.34
2	D	301	0Y0	OAH-CAB	-4.18	1.32	1.43
2	D	301	0Y0	C5-N7	-4.08	1.31	1.39
2	D	301	0Y0	CAC-CAB	-3.76	1.43	1.53
2	D	301	0Y0	CAF-CAA	-3.67	1.43	1.52
2	D	301	0Y0	C8-N9	-3.57	1.31	1.37
2	F	301	0Y0	CAF-CAA	-3.21	1.44	1.52
2	E	301	0Y0	OXT-C	3.06	1.31	1.22
2	F	301	0Y0	OXT-C	3.00	1.31	1.22
2	D	301	0Y0	CAB-CAA	-2.97	1.45	1.53
2	E	301	0Y0	OAH-CAB	-2.89	1.35	1.43
2	D	301	0Y0	OAI-CAC	-2.84	1.35	1.43
2	D	301	0Y0	C4-N9	-2.80	1.31	1.37
2	F	301	0Y0	C5-N7	-2.60	1.34	1.39
2	F	301	0Y0	OAH-CAB	-2.58	1.36	1.43
2	D	301	0Y0	OXT-C	2.54	1.29	1.22
2	E	301	0Y0	C5-N7	-2.44	1.34	1.39
2	D	301	0Y0	CAC-CAD	-2.33	1.46	1.53
2	D	301	0Y0	OAE-CAD	-2.28	1.36	1.42
2	E	301	0Y0	C8-N7	2.16	1.35	1.31
2	E	301	0Y0	CB-CA	2.03	1.57	1.53

All (36) bond angle outliers are listed below:

Mol	Chain	Res	Type	Atoms	Z	Observed(°)	Ideal(°)
2	E	301	0Y0	C5-C4-N3	-6.24	118.12	126.72
2	D	301	0Y0	C5-C4-N3	-5.66	118.93	126.72
2	E	301	0Y0	N1-C2-N3	-5.51	120.25	128.58
2	F	301	0Y0	C5-C4-N3	-5.42	119.26	126.72
2	F	301	0Y0	N1-C2-N3	-4.94	121.11	128.58
2	E	301	0Y0	N3-C4-N9	4.90	135.50	127.17
2	F	301	0Y0	N3-C4-N9	4.75	135.25	127.17
2	E	301	0Y0	CB-CAS-NAR	4.65	119.64	111.89
2	D	301	0Y0	N1-C2-N3	-4.61	121.60	128.58
2	D	301	0Y0	N3-C4-N9	4.41	134.66	127.17
2	E	301	0Y0	C2-N3-C4	4.32	122.39	111.83
2	F	301	0Y0	N9-C8-N7	-4.32	107.80	113.94
2	D	301	0Y0	N9-C8-N7	-4.23	107.93	113.94
2	F	301	0Y0	CB-CAS-NAR	3.84	118.29	111.89
2	E	301	0Y0	N9-C8-N7	-3.72	108.66	113.94
2	F	301	0Y0	C4-N9-C8	3.68	109.60	105.74
2	D	301	0Y0	C2-N3-C4	3.67	120.79	111.83
2	D	301	0Y0	C5-N7-C8	3.64	109.17	103.45
2	F	301	0Y0	C2-N3-C4	3.59	120.60	111.83
2	D	301	0Y0	C4-N9-C8	3.57	109.48	105.74
2	F	301	0Y0	C5-N7-C8	3.50	108.95	103.45
2	D	301	0Y0	C4-C5-N7	-3.12	107.01	110.58
2	E	301	0Y0	C5-N7-C8	3.08	108.30	103.45
2	E	301	0Y0	C4-N9-C8	2.83	108.71	105.74
2	E	301	0Y0	O-C-OXT	-2.72	117.91	124.08
2	F	301	0Y0	CAC-CAB-CAA	2.61	107.66	102.61
2	F	301	0Y0	CAC-CAD-N9	2.50	119.51	113.30
2	F	301	0Y0	O-C-OXT	-2.48	118.46	124.08
2	E	301	0Y0	C5-C6-N6	-2.36	117.45	123.29
2	D	301	0Y0	O-C-OXT	-2.33	118.80	124.08
2	E	301	0Y0	C4-C5-N7	-2.31	107.94	110.58
2	F	301	0Y0	C4-N9-CAD	-2.16	121.57	126.63
2	D	301	0Y0	CB-CA-C	-2.16	104.72	110.45
2	F	301	0Y0	C4-C5-N7	-2.16	108.11	110.58
2	F	301	0Y0	C5-C6-N6	-2.15	117.96	123.29
2	E	301	0Y0	CAC-CAB-CAA	2.06	106.58	102.61

There are no chirality outliers.

All (19) torsion outliers are listed below:

Mol	Chain	Res	Type	Atoms
2	D	301	0Y0	CAA-CAF-NAR-CAS
2	D	301	0Y0	OAE-CAA-CAF-NAR

Continued on next page...

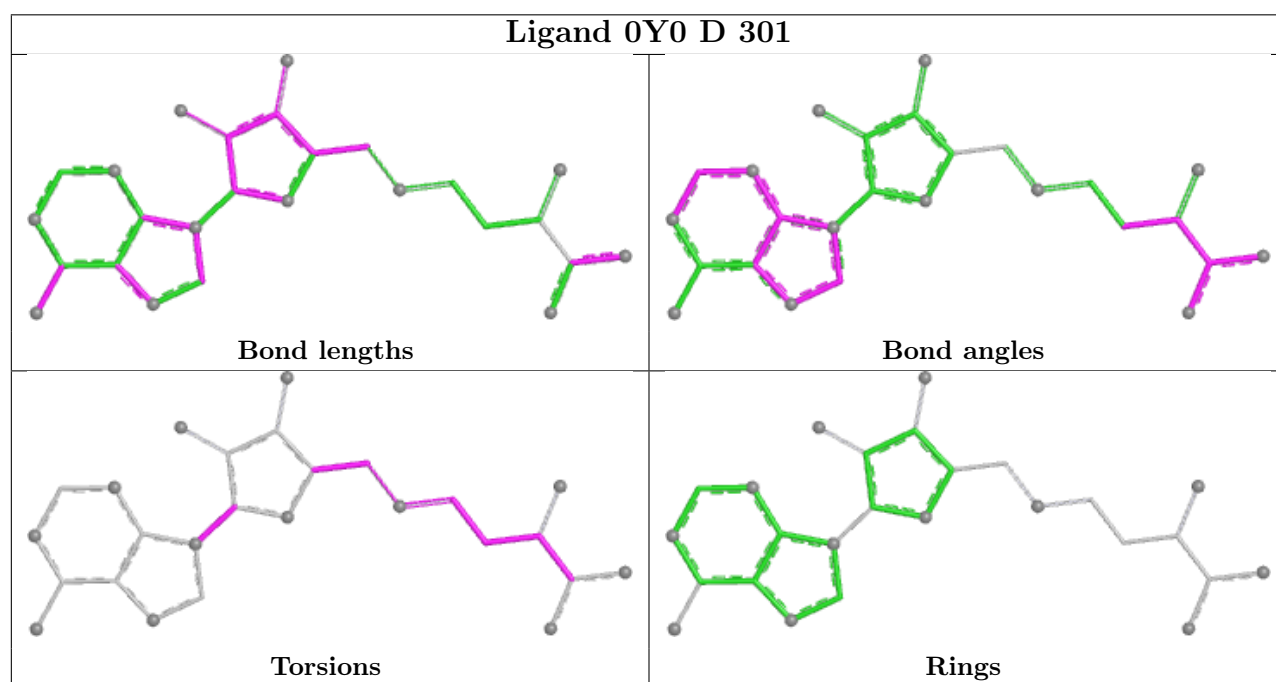
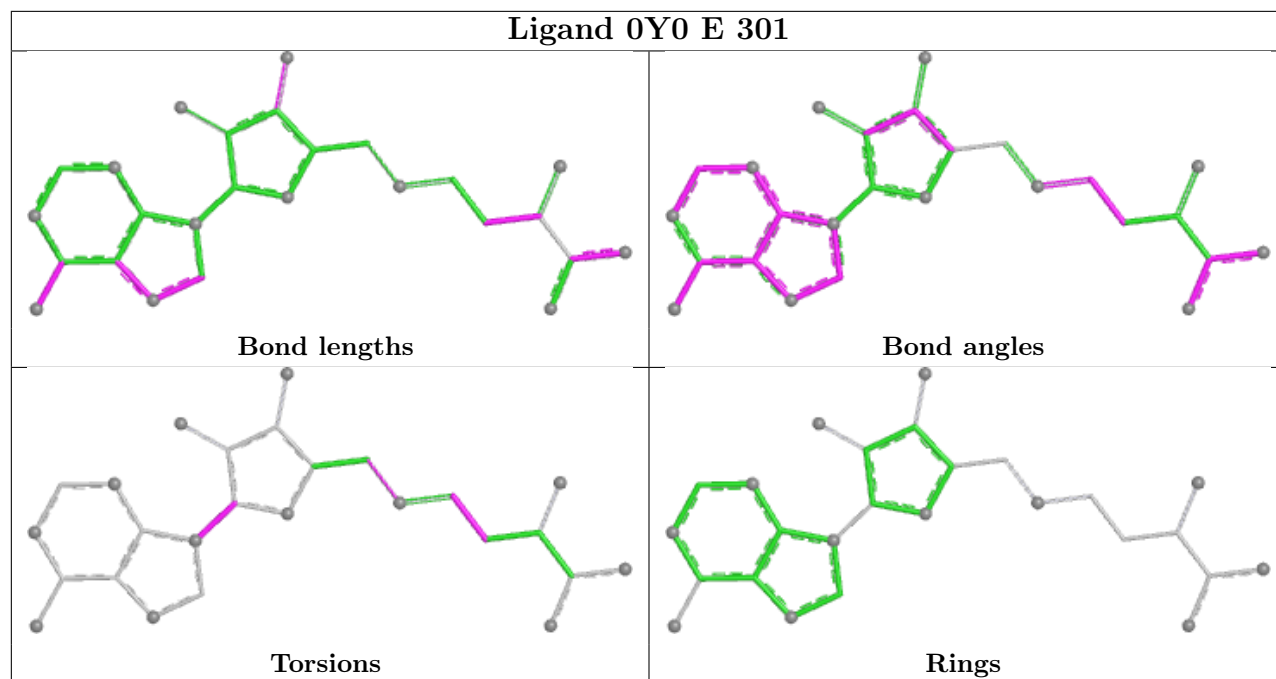
Continued from previous page...

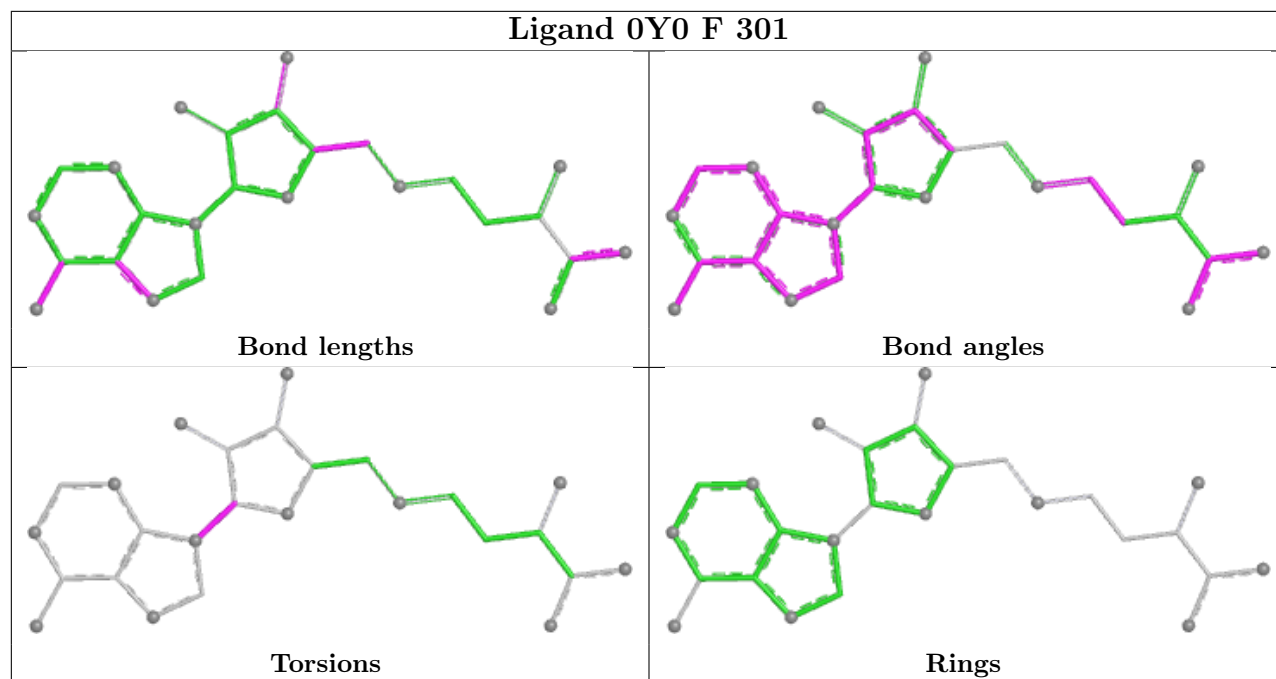
Mol	Chain	Res	Type	Atoms
2	D	301	0Y0	CAB-CAA-CAF-NAR
2	E	301	0Y0	NAR-CAS-CB-CA
2	D	301	0Y0	O-C-CA-N
2	D	301	0Y0	NAR-CAS-CB-CA
2	D	301	0Y0	OXT-C-CA-N
2	E	301	0Y0	CAA-CAF-NAR-CAS
2	D	301	0Y0	CAC-CAD-N9-C8
2	E	301	0Y0	CAC-CAD-N9-C8
2	F	301	0Y0	CAC-CAD-N9-C8
2	D	301	0Y0	N-CA-CB-CAS
2	D	301	0Y0	CB-CAS-NAR-CAF
2	D	301	0Y0	OXT-C-CA-CB
2	D	301	0Y0	O-C-CA-CB
2	F	301	0Y0	CAC-CAD-N9-C4
2	E	301	0Y0	OAE-CAD-N9-C8
2	E	301	0Y0	CAC-CAD-N9-C4
2	F	301	0Y0	OAE-CAD-N9-C8

There are no ring outliers.

No monomer is involved in short contacts.

The following is a two-dimensional graphical depiction of Mogul quality analysis of bond lengths, bond angles, torsion angles, and ring geometry for all instances of the Ligand of Interest. In addition, ligands with molecular weight > 250 and outliers as shown on the validation Tables will also be included. For torsion angles, if less than 5% of the Mogul distribution of torsion angles is within 10 degrees of the torsion angle in question, then that torsion angle is considered an outlier. Any bond that is central to one or more torsion angles identified as an outlier by Mogul will be highlighted in the graph. For rings, the root-mean-square deviation (RMSD) between the ring in question and similar rings identified by Mogul is calculated over all ring torsion angles. If the average RMSD is greater than 60 degrees and the minimal RMSD between the ring in question and any Mogul-identified rings is also greater than 60 degrees, then that ring is considered an outlier. The outliers are highlighted in purple. The color gray indicates Mogul did not find sufficient equivalents in the CSD to analyse the geometry.





5.7 Other polymers [i](#)

There are no such residues in this entry.

5.8 Polymer linkage issues [i](#)

There are no chain breaks in this entry.

6 Fit of model and data

6.1 Protein, DNA and RNA chains

In the following table, the column labelled ‘#RSRZ > 2’ contains the number (and percentage) of RSRZ outliers, followed by percent RSRZ outliers for the chain as percentile scores relative to all X-ray entries and entries of similar resolution. The OWAB column contains the minimum, median, 95th percentile and maximum values of the occupancy-weighted average B-factor per residue. The column labelled ‘Q < 0.9’ lists the number of (and percentage) of residues with an average occupancy less than 0.9.

Mol	Chain	Analysed	<RSRZ>	#RSRZ>2	OWAB(Å ²)	Q<0.9
1	D	243/278 (87%)	-0.15	10 (4%) 41 41	26, 39, 62, 86	0
1	E	244/278 (87%)	0.06	14 (5%) 29 26	29, 44, 68, 99	0
1	F	244/278 (87%)	0.04	13 (5%) 32 30	28, 43, 62, 94	1 (0%)
All	All	731/834 (87%)	-0.02	37 (5%) 33 31	26, 42, 65, 99	1 (0%)

All (37) RSRZ outliers are listed below:

Mol	Chain	Res	Type	RSRZ
1	D	14	LYS	7.0
1	F	14	LYS	6.5
1	F	15	TYR	6.2
1	E	247	VAL	6.0
1	E	15	TYR	5.7
1	D	16	PRO	5.6
1	F	16	PRO	5.5
1	D	199	ASN	5.2
1	E	13	GLY	5.1
1	F	247	VAL	4.9
1	D	15	TYR	4.8
1	F	13	GLY	4.7
1	F	199	ASN	4.1
1	E	261	VAL	4.1
1	D	13	GLY	4.0
1	D	12	GLY	3.9
1	E	14	LYS	3.8
1	F	17	LEU	3.8
1	F	200	SER	3.7
1	E	17	LEU	3.4
1	D	11	ALA	3.4
1	F	12	GLY	3.2
1	F	187	LEU	3.1

Continued on next page...

Continued from previous page...

Mol	Chain	Res	Type	RSRZ
1	F	139	LYS	3.0
1	D	200	SER	3.0
1	E	16	PRO	2.9
1	E	260	LYS	2.9
1	D	246	LYS	2.9
1	E	200	SER	2.8
1	D	17	LEU	2.8
1	E	187	LEU	2.6
1	F	3	LYS	2.6
1	E	245	VAL	2.4
1	E	3	LYS	2.2
1	E	137	ARG	2.1
1	F	46	ASP	2.1
1	E	12	GLY	2.0

6.2 Non-standard residues in protein, DNA, RNA chains [i](#)

There are no non-standard protein/DNA/RNA residues in this entry.

6.3 Carbohydrates [i](#)

There are no oligosaccharides in this entry.

6.4 Ligands [i](#)

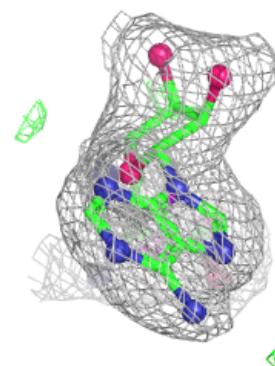
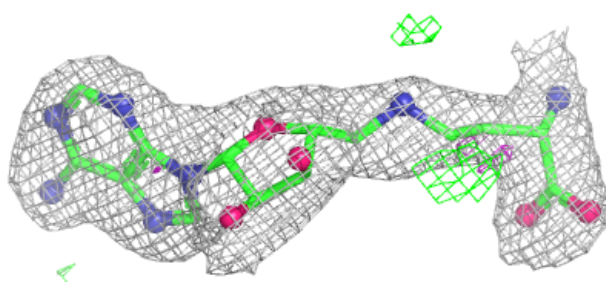
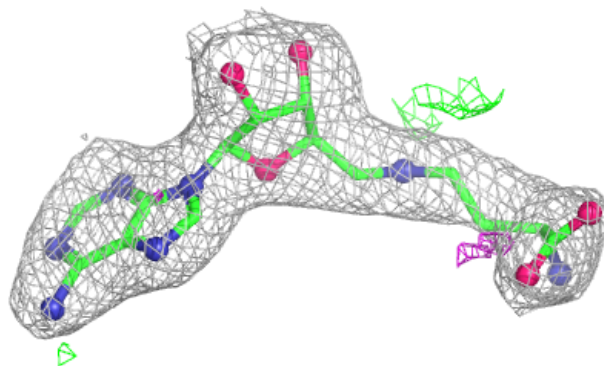
In the following table, the Atoms column lists the number of modelled atoms in the group and the number defined in the chemical component dictionary. The B-factors column lists the minimum, median, 95th percentile and maximum values of B factors of atoms in the group. The column labelled 'Q< 0.9' lists the number of atoms with occupancy less than 0.9.

Mol	Type	Chain	Res	Atoms	RSCC	RSR	B-factors(Å ²)	Q<0.9
2	0Y0	D	301	26/26	0.92	0.10	45,52,62,62	0
2	0Y0	F	301	26/26	0.92	0.10	41,45,54,56	0
2	0Y0	E	301	26/26	0.93	0.10	43,50,58,59	0

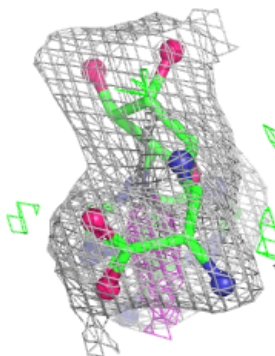
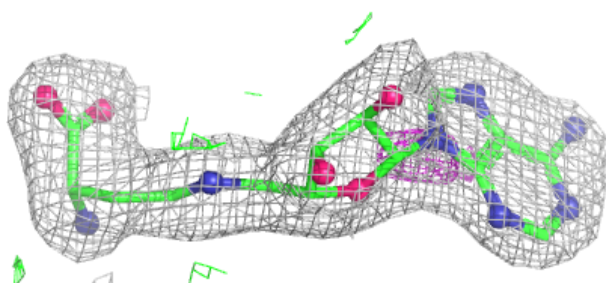
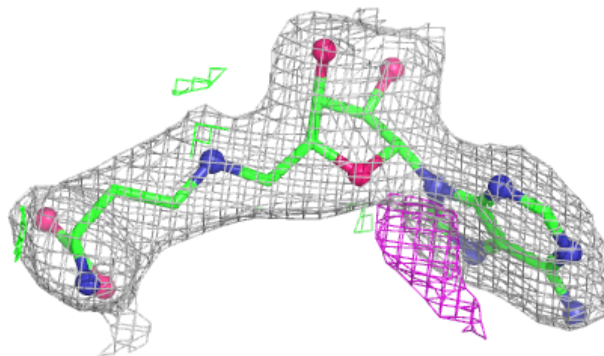
The following is a graphical depiction of the model fit to experimental electron density of all instances of the Ligand of Interest. In addition, ligands with molecular weight > 250 and outliers as shown on the geometry validation Tables will also be included. Each fit is shown from different orientation to approximate a three-dimensional view.

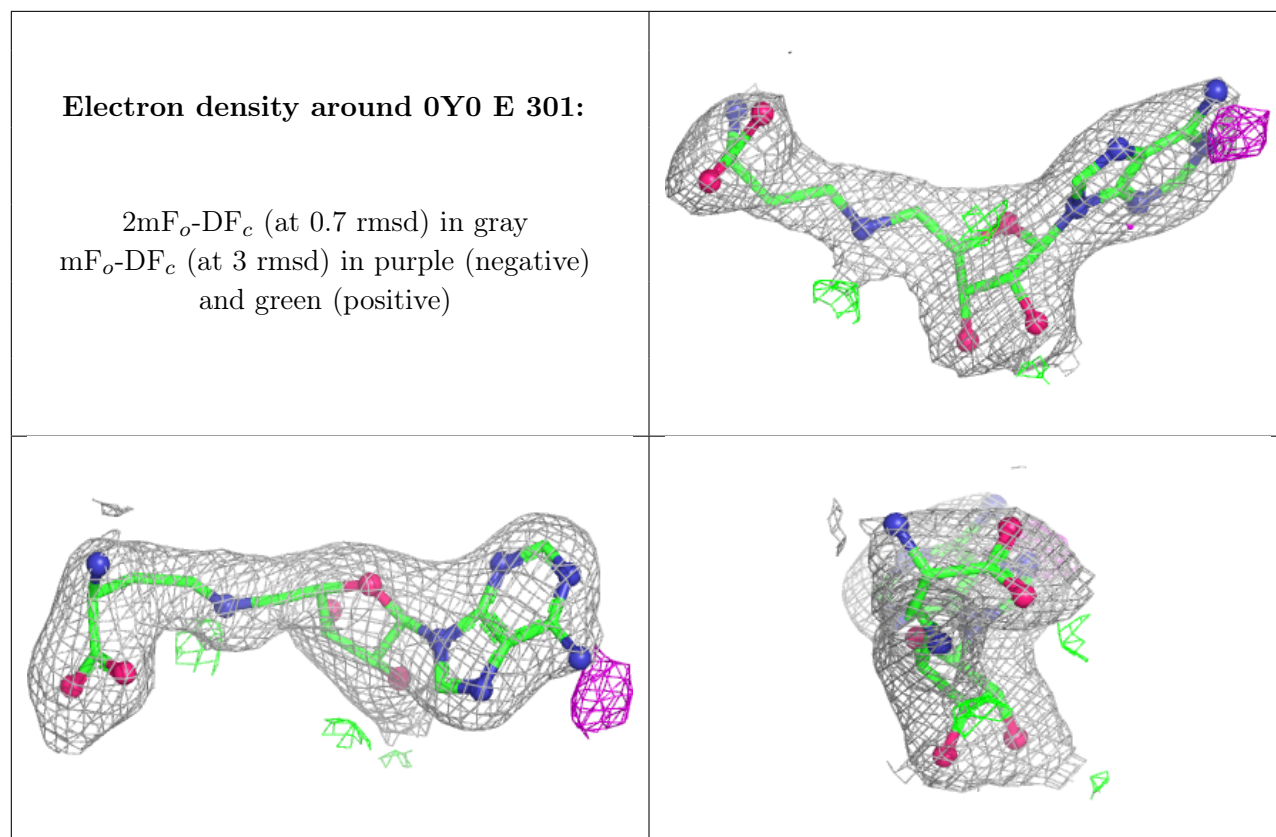
Electron density around 0Y0 D 301:

$2mF_o-DF_c$ (at 0.7 rmsd) in gray
 mF_o-DF_c (at 3 rmsd) in purple (negative)
and green (positive)

**Electron density around 0Y0 F 301:**

$2mF_o-DF_c$ (at 0.7 rmsd) in gray
 mF_o-DF_c (at 3 rmsd) in purple (negative)
and green (positive)





6.5 Other polymers [i](#)

There are no such residues in this entry.