



wwPDB X-ray Structure Validation Summary Report ⓘ

Mar 5, 2026 – 08:01 AM UTC

PDB ID : 4GRV / pdb_00004grv
Title : The crystal structure of the neurotensin receptor NTS1 in complex with neurotensin (8-13)
Authors : Noinaj, N.; White, J.F.; Shibata, Y.; Love, J.; Kloss, B.; Xu, F.; Gvozdenovic-Jeremic, J.; Shah, P.; Shiloach, J.; Tate, C.G.; Grisshammer, R.
Deposited on : 2012-08-27
Resolution : 2.80 Å(reported)

This is a wwPDB X-ray Structure Validation Summary Report for a publicly released PDB entry.

We welcome your comments at validation@mail.wwpdb.org

A user guide is available at

<https://www.wwpdb.org/validation/2017/XrayValidationReportHelp>

with specific help available everywhere you see the ⓘ symbol.

The types of validation reports are described at

<http://www.wwpdb.org/validation/2017/FAQs#types>.

The following versions of software and data (see [references ⓘ](#)) were used in the production of this report:

MolProbity : 4-5-2 with Phenix2.0
Mogul : 2022.3.0, CSD as543be (2022)
Xtriage (Phenix) : 2.0
EDS : 3.0
Percentile statistics : 20250101.v01 (using entries in the PDB archive January 1st 2025)
CCP4 : 9.0.010 (Gargrove)
Density-Fitness : 1.0.12
Ideal geometry (proteins) : Engh & Huber (2001)
Ideal geometry (DNA, RNA) : Parkinson et al. (1996)
Validation Pipeline (wwPDB-VP) : 2.49

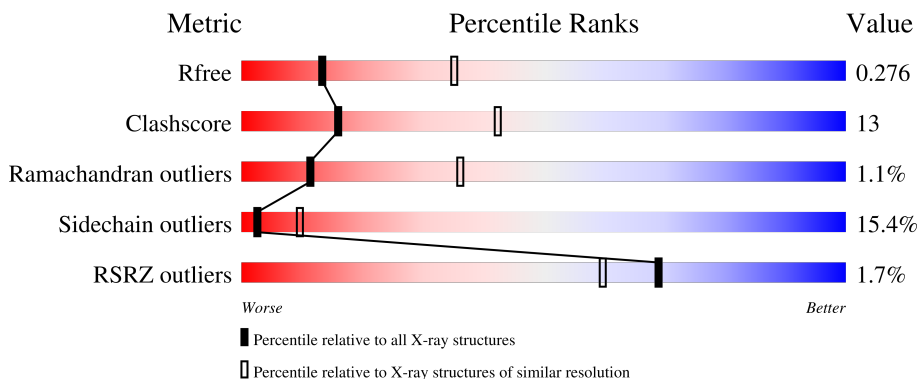
1 Overall quality at a glance

The following experimental techniques were used to determine the structure:

X-RAY DIFFRACTION

The reported resolution of this entry is 2.80 Å.

Percentile scores (ranging between 0-100) for global validation metrics of the entry are shown in the following graphic. The table shows the number of entries on which the scores are based.



Metric	Whole archive (#Entries)	Similar resolution (#Entries, resolution range(Å))
R_{free}	180053	3866 (2.80-2.80)
Clashscore	190562	4276 (2.80-2.80)
Ramachandran outliers	187476	4196 (2.80-2.80)
Sidechain outliers	187428	4198 (2.80-2.80)
RSRZ outliers	180081	3869 (2.80-2.80)

The table below summarises the geometric issues observed across the polymeric chains and their fit to the electron density. The red, orange, yellow and green segments of the lower bar indicate the fraction of residues that contain outliers for ≥ 3 , 2, 1 and 0 types of geometric quality criteria respectively. A grey segment represents the fraction of residues that are not modelled. The numeric value for each fraction is indicated below the corresponding segment, with a dot representing fractions $\leq 5\%$. The upper red bar (where present) indicates the fraction of residues that have poor fit to the electron density. The numeric value is given above the bar.

Mol	Chain	Length	Quality of chain
1	A	510	
2	B	6	

2 Entry composition [i](#)

There are 4 unique types of molecules in this entry. The entry contains 3546 atoms, of which 0 are hydrogens and 0 are deuteriums.

In the tables below, the ZeroOcc column contains the number of atoms modelled with zero occupancy, the AltConf column contains the number of residues with at least one atom in alternate conformation and the Trace column contains the number of residues modelled with at most 2 atoms.

- Molecule 1 is a protein called Neurotensin receptor type 1, lysozyme chimera.

Mol	Chain	Residues	Atoms					ZeroOcc	AltConf	Trace
			Total	C	N	O	S			
1	A	454	3435	2237	580	600	18	0	0	0

There are 37 discrepancies between the modelled and reference sequences:

Chain	Residue	Modelled	Actual	Comment	Reference
A	33	ASP	-	expression tag	UNP P20789
A	34	TYR	-	expression tag	UNP P20789
A	35	LYS	-	expression tag	UNP P20789
A	36	ASP	-	expression tag	UNP P20789
A	37	ASP	-	expression tag	UNP P20789
A	38	ASP	-	expression tag	UNP P20789
A	39	ASP	-	expression tag	UNP P20789
A	40	ALA	-	expression tag	UNP P20789
A	41	THR	-	expression tag	UNP P20789
A	42	SER	-	expression tag	UNP P20789
A	86	LEU	ALA	engineered mutation	UNP P20789
A	166	ALA	GLU	engineered mutation	UNP P20789
A	215	ALA	GLY	engineered mutation	UNP P20789
A	1054	THR	CYS	engineered mutation	UNP P00720
A	1097	ALA	CYS	engineered mutation	UNP P00720
A	1122	ASN	GLN	engineered mutation	UNP P00720
A	1123	ASN	GLN	engineered mutation	UNP P00720
A	1162	GLY	-	linker	UNP P00720
A	1163	SER	-	linker	UNP P00720
A	1164	GLY	-	linker	UNP P00720
A	1165	SER	-	linker	UNP P00720
A	310	ALA	LEU	engineered mutation	UNP P20789
A	358	ALA	PHE	engineered mutation	UNP P20789
A	360	ALA	VAL	engineered mutation	UNP P20789
A	397	ALA	-	expression tag	UNP P20789
A	398	HIS	-	expression tag	UNP P20789
A	399	HIS	-	expression tag	UNP P20789

Continued on next page...

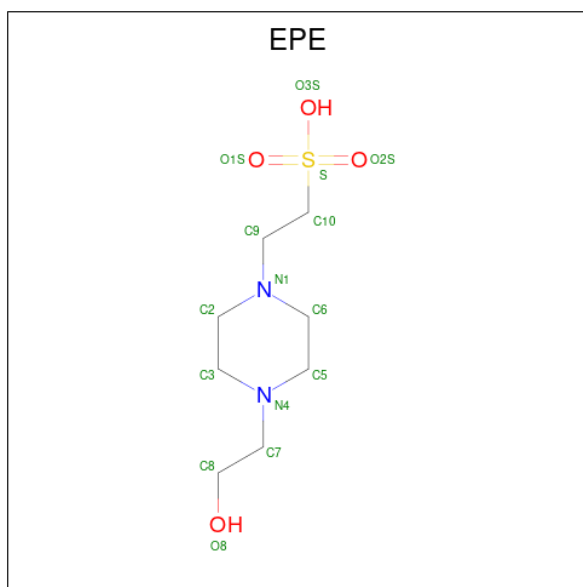
Continued from previous page...

Chain	Residue	Modelled	Actual	Comment	Reference
A	400	HIS	-	expression tag	UNP P20789
A	401	HIS	-	expression tag	UNP P20789
A	402	HIS	-	expression tag	UNP P20789
A	403	HIS	-	expression tag	UNP P20789
A	404	HIS	-	expression tag	UNP P20789
A	405	HIS	-	expression tag	UNP P20789
A	406	HIS	-	expression tag	UNP P20789
A	407	HIS	-	expression tag	UNP P20789
A	408	GLY	-	expression tag	UNP P20789
A	409	GLY	-	expression tag	UNP P20789

- Molecule 2 is a protein called Neurotensin 8-13.

Mol	Chain	Residues	Atoms				ZeroOcc	AltConf	Trace
			Total	C	N	O			
2	B	6	58	38	12	8	0	0	0

- Molecule 3 is 4-(2-HYDROXYETHYL)-1-PIPERAZINE ETHANESULFONIC ACID (CCD ID: EPE) (formula: C₈H₁₈N₂O₄S).



Mol	Chain	Residues	Atoms					ZeroOcc	AltConf
			Total	C	N	O	S		
3	A	1	15	8	2	4	1	0	0
3	A	1	15	8	2	4	1	0	0

- Molecule 4 is water.

Mol	Chain	Residues	Atoms		ZeroOcc	AltConf
4	A	23	Total 23	O 23	0	0

4 Data and refinement statistics

Property	Value	Source
Space group	P 1 21 1	Depositor
Cell constants a, b, c, α , β , γ	49.96Å 69.62Å 97.55Å 90.00° 101.75° 90.00°	Depositor
Resolution (Å)	14.96 – 2.80 14.96 – 2.80	Depositor EDS
% Data completeness (in resolution range)	(Not available) (14.96-2.80) 91.2 (14.96-2.80)	Depositor EDS
R_{merge}	(Not available)	Depositor
R_{sym}	(Not available)	Depositor
$\langle I/\sigma(I) \rangle$ ¹	1.64 (at 2.81Å)	Xtrriage
Refinement program	PHENIX (phenix.refine: dev_1042)	Depositor
R, R_{free}	0.225 , 0.282 0.238 , 0.276	Depositor DCC
R_{free} test set	767 reflections (4.71%)	wwPDB-VP
Wilson B-factor (Å ²)	61.4	Xtrriage
Anisotropy	0.099	Xtrriage
Bulk solvent k_{sol} (e/Å ³), B_{sol} (Å ²)	0.27 , 57.7	EDS
L-test for twinning ²	$\langle L \rangle = 0.48$, $\langle L^2 \rangle = 0.31$	Xtrriage
Estimated twinning fraction	No twinning to report.	Xtrriage
F_o, F_c correlation	0.93	EDS
Total number of atoms	3546	wwPDB-VP
Average B, all atoms (Å ²)	88.0	wwPDB-VP

Xtrriage's analysis on translational NCS is as follows: *The largest off-origin peak in the Patterson function is 7.23% of the height of the origin peak. No significant pseudotranslation is detected.*

¹Intensities estimated from amplitudes.

²Theoretical values of $\langle |L| \rangle$, $\langle L^2 \rangle$ for acentric reflections are 0.5, 0.333 respectively for untwinned datasets, and 0.375, 0.2 for perfectly twinned datasets.

5 Model quality [i](#)

5.1 Standard geometry [i](#)

Bond lengths and bond angles in the following residue types are not validated in this section: EPE

The Z score for a bond length (or angle) is the number of standard deviations the observed value is removed from the expected value. A bond length (or angle) with $|Z| > 5$ is considered an outlier worth inspection. RMSZ is the root-mean-square of all Z scores of the bond lengths (or angles).

Mol	Chain	Bond lengths		Bond angles	
		RMSZ	# Z >5	RMSZ	# Z >5
1	A	0.40	0/3512	0.91	11/4802 (0.2%)
2	B	0.91	0/59	0.96	0/77
All	All	0.41	0/3571	0.91	11/4879 (0.2%)

There are no bond length outliers.

The worst 5 of 11 bond angle outliers are listed below:

Mol	Chain	Res	Type	Atoms	Z	Observed(°)	Ideal(°)
1	A	1136	SER	N-CA-C	-13.18	90.53	110.30
1	A	1137	ARG	N-CA-C	-12.28	94.48	113.89
1	A	1136	SER	CB-CA-C	7.83	120.94	110.06
1	A	1137	ARG	N-CA-CB	6.91	120.91	110.95
1	A	186	THR	N-CA-C	-6.79	104.57	112.92

There are no chirality outliers.

There are no planarity outliers.

5.2 Too-close contacts [i](#)

In the following table, the Non-H and H(model) columns list the number of non-hydrogen atoms and hydrogen atoms in the chain respectively. The H(added) column lists the number of hydrogen atoms added and optimized by MolProbity. The Clashes column lists the number of clashes within the asymmetric unit, whereas Symm-Clashes lists symmetry-related clashes.

Mol	Chain	Non-H	H(model)	H(added)	Clashes	Symm-Clashes
1	A	3435	0	3364	90	0
2	B	58	0	63	8	0
3	A	30	0	34	2	0
4	A	23	0	0	3	0

Continued on next page...

Continued from previous page...

Mol	Chain	Non-H	H(model)	H(added)	Clashes	Symm-Clashes
All	All	3546	0	3461	92	0

The all-atom clashscore is defined as the number of clashes found per 1000 atoms (including hydrogen atoms). The all-atom clashscore for this structure is 13.

The worst 5 of 92 close contacts within the same asymmetric unit are listed below, sorted by their clash magnitude.

Atom-1	Atom-2	Interatomic distance (Å)	Clash overlap (Å)
1:A:335:SER:CB	2:B:9:ARG:NH1	2.18	1.07
1:A:335:SER:CB	2:B:9:ARG:HH12	1.75	0.99
1:A:168:TYR:HA	1:A:260:ILE:HD11	1.52	0.92
1:A:1011:GLU:HG3	1:A:1030:GLY:HA3	1.69	0.74
1:A:1033:LEU:HD11	1:A:1046:LEU:HD22	1.69	0.74

There are no symmetry-related clashes.

5.3 Torsion angles [i](#)

5.3.1 Protein backbone [i](#)

In the following table, the Percentiles column shows the percent Ramachandran outliers of the chain as a percentile score with respect to all X-ray entries followed by that with respect to entries of similar resolution.

The Analysed column shows the number of residues for which the backbone conformation was analysed, and the total number of residues.

Mol	Chain	Analysed	Favoured	Allowed	Outliers	Percentiles	
1	A	448/510 (88%)	402 (90%)	41 (9%)	5 (1%)	11	36
2	B	4/6 (67%)	4 (100%)	0	0	100	100
All	All	452/516 (88%)	406 (90%)	41 (9%)	5 (1%)	11	36

All (5) Ramachandran outliers are listed below:

Mol	Chain	Res	Type
1	A	336	ASP
1	A	178	LYS
1	A	1138	TRP
1	A	1039	LEU

Continued on next page...

Continued from previous page...

Mol	Chain	Res	Type
1	A	1002	ASN

5.3.2 Protein sidechains [i](#)

In the following table, the Percentiles column shows the percent sidechain outliers of the chain as a percentile score with respect to all X-ray entries followed by that with respect to entries of similar resolution.

The Analysed column shows the number of residues for which the sidechain conformation was analysed, and the total number of residues.

Mol	Chain	Analysed	Rotameric	Outliers	Percentiles
1	A	345/432 (80%)	294 (85%)	51 (15%)	3 10
2	B	6/6 (100%)	3 (50%)	3 (50%)	0 0
All	All	351/438 (80%)	297 (85%)	54 (15%)	2 10

5 of 54 residues with a non-rotameric sidechain are listed below:

Mol	Chain	Res	Type
1	A	266	VAL
1	A	1092	ASP
1	A	376	PHE
1	A	1002	ASN
1	A	1046	LEU

Sometimes sidechains can be flipped to improve hydrogen bonding and reduce clashes. There are no such sidechains identified.

5.3.3 RNA [i](#)

There are no RNA molecules in this entry.

5.4 Non-standard residues in protein, DNA, RNA chains [i](#)

There are no non-standard protein/DNA/RNA residues in this entry.

5.5 Carbohydrates [i](#)

There are no oligosaccharides in this entry.

5.6 Ligand geometry

2 ligands are modelled in this entry.

In the following table, the Counts columns list the number of bonds (or angles) for which Mogul statistics could be retrieved, the number of bonds (or angles) that are observed in the model and the number of bonds (or angles) that are defined in the Chemical Component Dictionary. The Link column lists molecule types, if any, to which the group is linked. The Z score for a bond length (or angle) is the number of standard deviations the observed value is removed from the expected value. A bond length (or angle) with $|Z| > 2$ is considered an outlier worth inspection. RMSZ is the root-mean-square of all Z scores of the bond lengths (or angles).

Mol	Type	Chain	Res	Link	Bond lengths			Bond angles		
					Counts	RMSZ	# Z > 2	Counts	RMSZ	# Z > 2
3	EPE	A	601	-	15,15,15	0.82	1 (6%)	19,20,20	1.98	5 (26%)
3	EPE	A	602	-	15,15,15	0.91	1 (6%)	19,20,20	1.76	6 (31%)

In the following table, the Chirals column lists the number of chiral outliers, the number of chiral centers analysed, the number of these observed in the model and the number defined in the Chemical Component Dictionary. Similar counts are reported in the Torsion and Rings columns. '-' means no outliers of that kind were identified.

Mol	Type	Chain	Res	Link	Chirals	Torsions	Rings
3	EPE	A	601	-	-	4/9/19/19	0/1/1/1
3	EPE	A	602	-	-	4/9/19/19	0/1/1/1

All (2) bond length outliers are listed below:

Mol	Chain	Res	Type	Atoms	Z	Observed(Å)	Ideal(Å)
3	A	602	EPE	C10-S	3.08	1.81	1.77
3	A	601	EPE	C10-S	2.67	1.81	1.77

The worst 5 of 11 bond angle outliers are listed below:

Mol	Chain	Res	Type	Atoms	Z	Observed(°)	Ideal(°)
3	A	601	EPE	C5-N4-C3	4.50	118.53	108.84
3	A	601	EPE	C7-N4-C3	4.01	121.91	111.24
3	A	602	EPE	C7-N4-C3	3.51	120.60	111.24
3	A	602	EPE	C5-N4-C3	3.43	116.22	108.84
3	A	601	EPE	C7-N4-C5	3.07	119.42	111.24

There are no chirality outliers.

5 of 8 torsion outliers are listed below:

Mol	Chain	Res	Type	Atoms
3	A	602	EPE	C10-C9-N1-C2
3	A	602	EPE	C10-C9-N1-C6
3	A	602	EPE	C8-C7-N4-C5
3	A	602	EPE	S-C10-C9-N1
3	A	601	EPE	C8-C7-N4-C5

There are no ring outliers.

1 monomer is involved in 2 short contacts:

Mol	Chain	Res	Type	Clashes	Symm-Clashes
3	A	602	EPE	2	0

5.7 Other polymers [i](#)

There are no such residues in this entry.

5.8 Polymer linkage issues [i](#)

There are no chain breaks in this entry.

6 Fit of model and data [i](#)

6.1 Protein, DNA and RNA chains [i](#)

In the following table, the column labelled ‘#RSRZ> 2’ contains the number (and percentage) of RSRZ outliers, followed by percent RSRZ outliers for the chain as percentile scores relative to all X-ray entries and entries of similar resolution. The OWAB column contains the minimum, median, 95th percentile and maximum values of the occupancy-weighted average B-factor per residue. The column labelled ‘Q< 0.9’ lists the number of (and percentage) of residues with an average occupancy less than 0.9.

Mol	Chain	Analysed	<RSRZ>	#RSRZ>2	OWAB(Å ²)	Q<0.9
1	A	454/510 (89%)	0.08	8 (1%) 67 58	53, 84, 126, 160	0
2	B	6/6 (100%)	0.20	0 100 100	82, 85, 102, 103	0
All	All	460/516 (89%)	0.08	8 (1%) 69 60	53, 84, 126, 160	0

The worst 5 of 8 RSRZ outliers are listed below:

Mol	Chain	Res	Type	RSRZ
1	A	1144	ASN	3.5
1	A	1137	ARG	2.5
1	A	1136	SER	2.5
1	A	152	CYS	2.2
1	A	89	LEU	2.2

6.2 Non-standard residues in protein, DNA, RNA chains [i](#)

There are no non-standard protein/DNA/RNA residues in this entry.

6.3 Carbohydrates [i](#)

There are no oligosaccharides in this entry.

6.4 Ligands [i](#)

In the following table, the Atoms column lists the number of modelled atoms in the group and the number defined in the chemical component dictionary. The B-factors column lists the minimum, median, 95th percentile and maximum values of B factors of atoms in the group. The column labelled ‘Q< 0.9’ lists the number of atoms with occupancy less than 0.9.

Mol	Type	Chain	Res	Atoms	RSCC	RSR	B-factors(\AA^2)	Q<0.9
3	EPE	A	601	15/15	0.76	0.14	100,109,151,152	0
3	EPE	A	602	15/15	0.82	0.14	75,101,190,191	0

6.5 Other polymers [i](#)

There are no such residues in this entry.