



# wwPDB X-ray Structure Validation Summary Report ⓘ

Mar 6, 2026 – 04:56 PM UTC

PDB ID : 2I39 / pdb\_00002i39  
Title : Crystal structure of Vaccinia virus N1L protein  
Authors : Aoyagi, M.; Aleshin, A.E.; Stec, B.; Liddington, R.C.  
Deposited on : 2006-08-17  
Resolution : 2.20 Å(reported)

This is a wwPDB X-ray Structure Validation Summary Report for a publicly released PDB entry.

We welcome your comments at [validation@mail.wwpdb.org](mailto:validation@mail.wwpdb.org)

A user guide is available at

<https://www.wwpdb.org/validation/2017/XrayValidationReportHelp>

with specific help available everywhere you see the ⓘ symbol.

The types of validation reports are described at

<http://www.wwpdb.org/validation/2017/FAQs#types>.

---

The following versions of software and data (see [references ⓘ](#)) were used in the production of this report:

MolProbity : 4-5-2 with Phenix2.0  
Mogul : 2022.3.0, CSD as543be (2022)  
Xtrriage (Phenix) : 2.0  
EDS : 3.0  
Percentile statistics : 20250101.v01 (using entries in the PDB archive January 1st 2025)  
CCP4 : 9.0.010 (Gargrove)  
Density-Fitness : 1.0.12  
Ideal geometry (proteins) : Engh & Huber (2001)  
Ideal geometry (DNA, RNA) : Parkinson et al. (1996)  
Validation Pipeline (wwPDB-VP) : 2.49

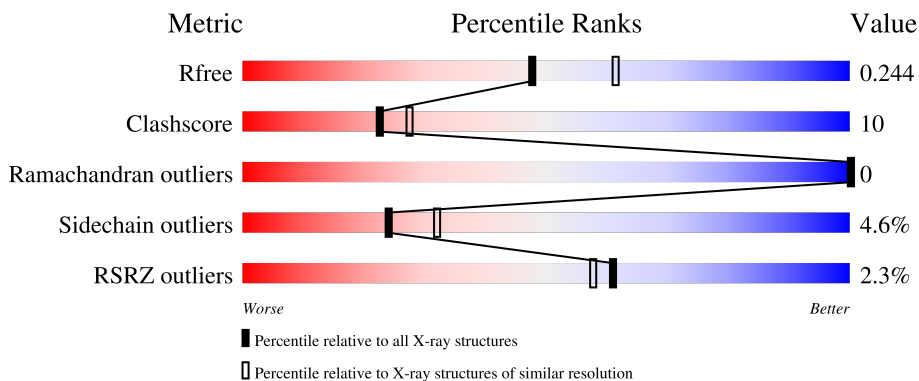
# 1 Overall quality at a glance

The following experimental techniques were used to determine the structure:

*X-RAY DIFFRACTION*

The reported resolution of this entry is 2.20 Å.

Percentile scores (ranging between 0-100) for global validation metrics of the entry are shown in the following graphic. The table shows the number of entries on which the scores are based.



Metric	Whole archive (#Entries)	Similar resolution (#Entries, resolution range(Å))
$R_{free}$	180053	6164 (2.20-2.20)
Clashscore	190562	6851 (2.20-2.20)
Ramachandran outliers	187476	6768 (2.20-2.20)
Sidechain outliers	187428	6769 (2.20-2.20)
RSRZ outliers	180081	6166 (2.20-2.20)

The table below summarises the geometric issues observed across the polymeric chains and their fit to the electron density. The red, orange, yellow and green segments of the lower bar indicate the fraction of residues that contain outliers for  $\geq 3$ , 2, 1 and 0 types of geometric quality criteria respectively. A grey segment represents the fraction of residues that are not modelled. The numeric value for each fraction is indicated below the corresponding segment, with a dot representing fractions  $\leq 5\%$ . The upper red bar (where present) indicates the fraction of residues that have poor fit to the electron density. The numeric value is given above the bar.

Mol	Chain	Length	Quality of chain
1	A	137	
1	B	137	
1	C	137	
1	D	137	
1	E	137	

Continued on next page...

*Continued from previous page...*

Mol	Chain	Length	Quality of chain
1	F	137	 % 67% 19% 14%

The following table lists non-polymeric compounds, carbohydrate monomers and non-standard residues in protein, DNA, RNA chains that are outliers for geometric or electron-density-fit criteria:

Mol	Type	Chain	Res	Chirality	Geometry	Clashes	Electron density
2	MPD	A	501	X	-	-	-
2	MPD	E	502	X	-	-	-

## 2 Entry composition

There are 3 unique types of molecules in this entry. The entry contains 6177 atoms, of which 0 are hydrogens and 0 are deuteriums.

In the tables below, the ZeroOcc column contains the number of atoms modelled with zero occupancy, the AltConf column contains the number of residues with at least one atom in alternate conformation and the Trace column contains the number of residues modelled with at most 2 atoms.

- Molecule 1 is a protein called Protein N1.

Mol	Chain	Residues	Atoms					ZeroOcc	AltConf	Trace
			Total	C	N	O	S			
1	A	117	974	615	165	186	8	0	0	0
1	B	119	983	620	167	188	8	0	0	0
1	C	119	983	620	167	188	8	0	0	0
1	D	119	983	620	167	188	8	0	0	0
1	E	118	978	617	166	187	8	0	0	0
1	F	118	978	617	166	187	8	0	0	0

There are 120 discrepancies between the modelled and reference sequences:

Chain	Residue	Modelled	Actual	Comment	Reference
A	-19	MET	-	cloning artifact	UNP P21054
A	-18	GLY	-	cloning artifact	UNP P21054
A	-17	SER	-	cloning artifact	UNP P21054
A	-16	SER	-	cloning artifact	UNP P21054
A	-15	HIS	-	expression tag	UNP P21054
A	-14	HIS	-	expression tag	UNP P21054
A	-13	HIS	-	expression tag	UNP P21054
A	-12	HIS	-	expression tag	UNP P21054
A	-11	HIS	-	expression tag	UNP P21054
A	-10	HIS	-	expression tag	UNP P21054
A	-9	SER	-	cloning artifact	UNP P21054
A	-8	SER	-	cloning artifact	UNP P21054
A	-7	GLY	-	cloning artifact	UNP P21054
A	-6	LEU	-	cloning artifact	UNP P21054
A	-5	VAL	-	cloning artifact	UNP P21054
A	-4	PRO	-	cloning artifact	UNP P21054
A	-3	ARG	-	cloning artifact	UNP P21054

*Continued on next page...*

*Continued from previous page...*

Chain	Residue	Modelled	Actual	Comment	Reference
A	-2	GLY	-	cloning artifact	UNP P21054
A	-1	SER	-	cloning artifact	UNP P21054
A	0	HIS	-	cloning artifact	UNP P21054
B	-19	MET	-	cloning artifact	UNP P21054
B	-18	GLY	-	cloning artifact	UNP P21054
B	-17	SER	-	cloning artifact	UNP P21054
B	-16	SER	-	cloning artifact	UNP P21054
B	-15	HIS	-	expression tag	UNP P21054
B	-14	HIS	-	expression tag	UNP P21054
B	-13	HIS	-	expression tag	UNP P21054
B	-12	HIS	-	expression tag	UNP P21054
B	-11	HIS	-	expression tag	UNP P21054
B	-10	HIS	-	expression tag	UNP P21054
B	-9	SER	-	cloning artifact	UNP P21054
B	-8	SER	-	cloning artifact	UNP P21054
B	-7	GLY	-	cloning artifact	UNP P21054
B	-6	LEU	-	cloning artifact	UNP P21054
B	-5	VAL	-	cloning artifact	UNP P21054
B	-4	PRO	-	cloning artifact	UNP P21054
B	-3	ARG	-	cloning artifact	UNP P21054
B	-2	GLY	-	cloning artifact	UNP P21054
B	-1	SER	-	cloning artifact	UNP P21054
B	0	HIS	-	cloning artifact	UNP P21054
C	-19	MET	-	cloning artifact	UNP P21054
C	-18	GLY	-	cloning artifact	UNP P21054
C	-17	SER	-	cloning artifact	UNP P21054
C	-16	SER	-	cloning artifact	UNP P21054
C	-15	HIS	-	expression tag	UNP P21054
C	-14	HIS	-	expression tag	UNP P21054
C	-13	HIS	-	expression tag	UNP P21054
C	-12	HIS	-	expression tag	UNP P21054
C	-11	HIS	-	expression tag	UNP P21054
C	-10	HIS	-	expression tag	UNP P21054
C	-9	SER	-	cloning artifact	UNP P21054
C	-8	SER	-	cloning artifact	UNP P21054
C	-7	GLY	-	cloning artifact	UNP P21054
C	-6	LEU	-	cloning artifact	UNP P21054
C	-5	VAL	-	cloning artifact	UNP P21054
C	-4	PRO	-	cloning artifact	UNP P21054
C	-3	ARG	-	cloning artifact	UNP P21054
C	-2	GLY	-	cloning artifact	UNP P21054
C	-1	SER	-	cloning artifact	UNP P21054

*Continued on next page...*

*Continued from previous page...*

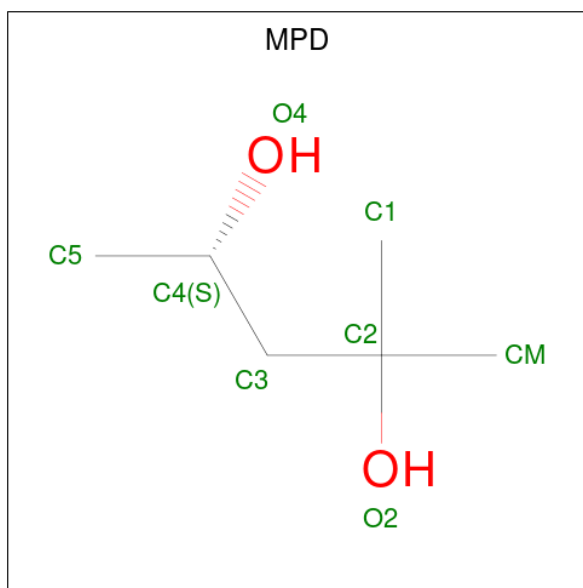
Chain	Residue	Modelled	Actual	Comment	Reference
C	0	HIS	-	cloning artifact	UNP P21054
D	-19	MET	-	cloning artifact	UNP P21054
D	-18	GLY	-	cloning artifact	UNP P21054
D	-17	SER	-	cloning artifact	UNP P21054
D	-16	SER	-	cloning artifact	UNP P21054
D	-15	HIS	-	expression tag	UNP P21054
D	-14	HIS	-	expression tag	UNP P21054
D	-13	HIS	-	expression tag	UNP P21054
D	-12	HIS	-	expression tag	UNP P21054
D	-11	HIS	-	expression tag	UNP P21054
D	-10	HIS	-	expression tag	UNP P21054
D	-9	SER	-	cloning artifact	UNP P21054
D	-8	SER	-	cloning artifact	UNP P21054
D	-7	GLY	-	cloning artifact	UNP P21054
D	-6	LEU	-	cloning artifact	UNP P21054
D	-5	VAL	-	cloning artifact	UNP P21054
D	-4	PRO	-	cloning artifact	UNP P21054
D	-3	ARG	-	cloning artifact	UNP P21054
D	-2	GLY	-	cloning artifact	UNP P21054
D	-1	SER	-	cloning artifact	UNP P21054
D	0	HIS	-	cloning artifact	UNP P21054
E	-19	MET	-	cloning artifact	UNP P21054
E	-18	GLY	-	cloning artifact	UNP P21054
E	-17	SER	-	cloning artifact	UNP P21054
E	-16	SER	-	cloning artifact	UNP P21054
E	-15	HIS	-	expression tag	UNP P21054
E	-14	HIS	-	expression tag	UNP P21054
E	-13	HIS	-	expression tag	UNP P21054
E	-12	HIS	-	expression tag	UNP P21054
E	-11	HIS	-	expression tag	UNP P21054
E	-10	HIS	-	expression tag	UNP P21054
E	-9	SER	-	cloning artifact	UNP P21054
E	-8	SER	-	cloning artifact	UNP P21054
E	-7	GLY	-	cloning artifact	UNP P21054
E	-6	LEU	-	cloning artifact	UNP P21054
E	-5	VAL	-	cloning artifact	UNP P21054
E	-4	PRO	-	cloning artifact	UNP P21054
E	-3	ARG	-	cloning artifact	UNP P21054
E	-2	GLY	-	cloning artifact	UNP P21054
E	-1	SER	-	cloning artifact	UNP P21054
E	0	HIS	-	cloning artifact	UNP P21054
F	-19	MET	-	cloning artifact	UNP P21054

*Continued on next page...*

Continued from previous page...

Chain	Residue	Modelled	Actual	Comment	Reference
F	-18	GLY	-	cloning artifact	UNP P21054
F	-17	SER	-	cloning artifact	UNP P21054
F	-16	SER	-	cloning artifact	UNP P21054
F	-15	HIS	-	expression tag	UNP P21054
F	-14	HIS	-	expression tag	UNP P21054
F	-13	HIS	-	expression tag	UNP P21054
F	-12	HIS	-	expression tag	UNP P21054
F	-11	HIS	-	expression tag	UNP P21054
F	-10	HIS	-	expression tag	UNP P21054
F	-9	SER	-	cloning artifact	UNP P21054
F	-8	SER	-	cloning artifact	UNP P21054
F	-7	GLY	-	cloning artifact	UNP P21054
F	-6	LEU	-	cloning artifact	UNP P21054
F	-5	VAL	-	cloning artifact	UNP P21054
F	-4	PRO	-	cloning artifact	UNP P21054
F	-3	ARG	-	cloning artifact	UNP P21054
F	-2	GLY	-	cloning artifact	UNP P21054
F	-1	SER	-	cloning artifact	UNP P21054
F	0	HIS	-	cloning artifact	UNP P21054

- Molecule 2 is (4S)-2-METHYL-2,4-PENTANEDIOL (CCD ID: MPD) (formula: C<sub>6</sub>H<sub>14</sub>O<sub>2</sub>).



Mol	Chain	Residues	Atoms			ZeroOcc	AltConf
2	A	1	Total	C	O	0	0
			8	6	2		
2	E	1	Total	C	O	0	0
			8	6	2		

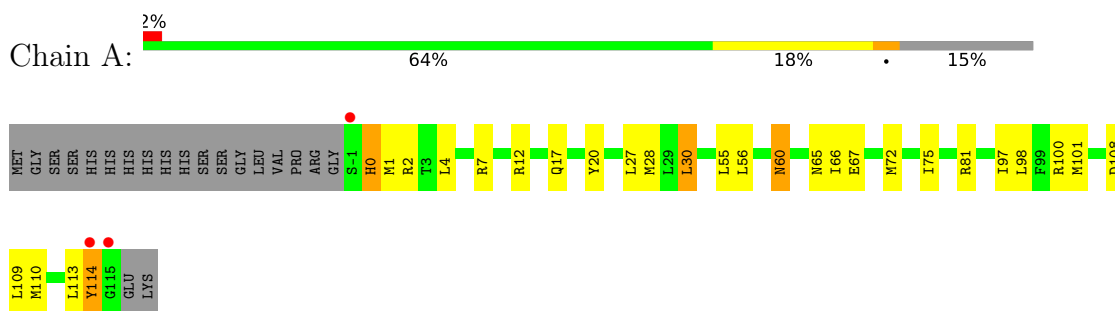
- Molecule 3 is water.

Mol	Chain	Residues	Atoms	ZeroOcc	AltConf
3	A	57	Total O 57 57	0	0
3	B	43	Total O 43 43	0	0
3	C	53	Total O 53 53	0	0
3	D	56	Total O 56 56	0	0
3	E	41	Total O 41 41	0	0
3	F	32	Total O 32 32	0	0

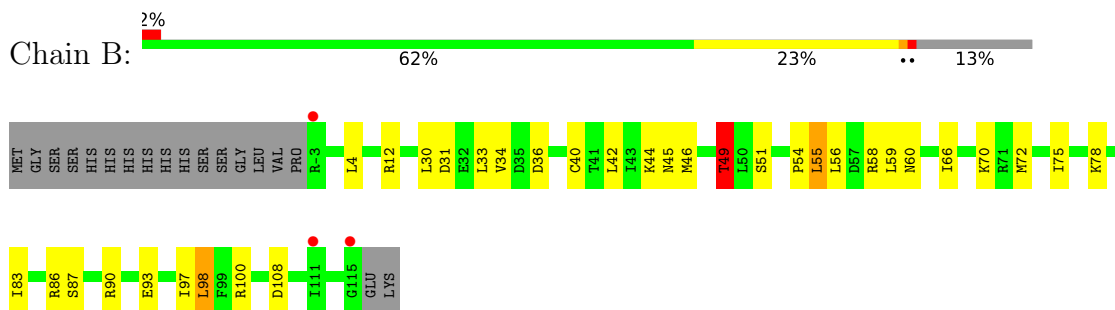
### 3 Residue-property plots [i](#)

These plots are drawn for all protein, RNA, DNA and oligosaccharide chains in the entry. The first graphic for a chain summarises the proportions of the various outlier classes displayed in the second graphic. The second graphic shows the sequence view annotated by issues in geometry and electron density. Residues are color-coded according to the number of geometric quality criteria for which they contain at least one outlier: green = 0, yellow = 1, orange = 2 and red = 3 or more. A red dot above a residue indicates a poor fit to the electron density ( $RSRZ > 2$ ). Stretches of 2 or more consecutive residues without any outlier are shown as a green connector. Residues present in the sample, but not in the model, are shown in grey.

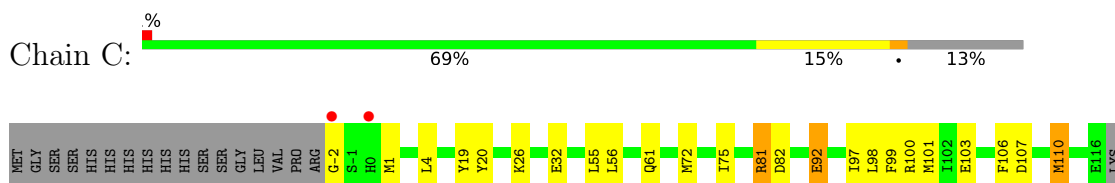
- Molecule 1: Protein N1



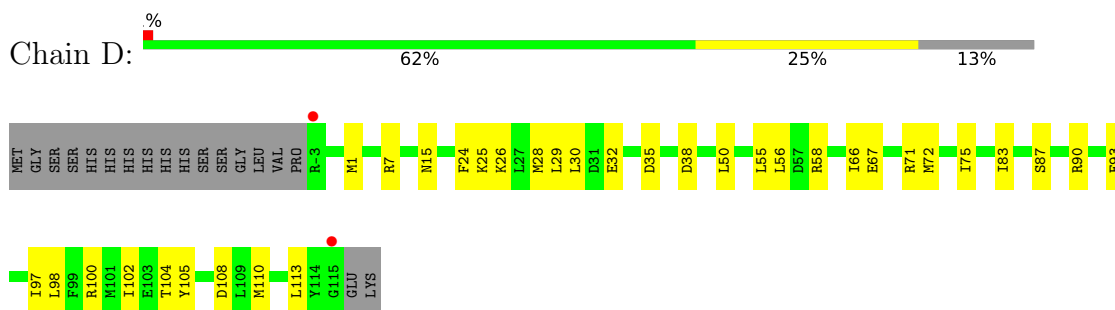
- Molecule 1: Protein N1



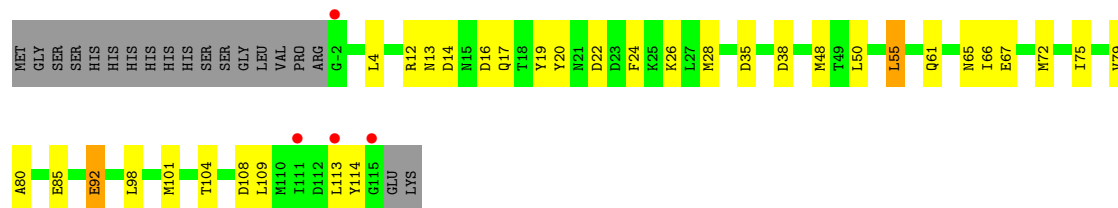
- Molecule 1: Protein N1



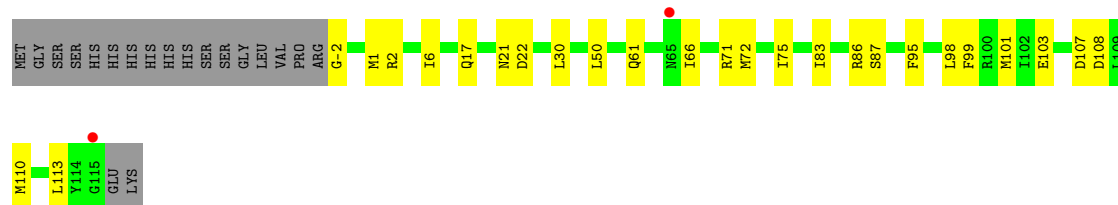
- Molecule 1: Protein N1



- Molecule 1: Protein N1



- Molecule 1: Protein N1



## 4 Data and refinement statistics

Property	Value	Source
Space group	P 1 21 1	Depositor
Cell constants a, b, c, $\alpha$ , $\beta$ , $\gamma$	68.64Å 109.99Å 69.58Å 90.00° 110.92° 90.00°	Depositor
Resolution (Å)	30.00 – 2.20 30.00 – 2.20	Depositor EDS
% Data completeness (in resolution range)	96.1 (30.00-2.20) 96.1 (30.00-2.20)	Depositor EDS
$R_{merge}$	(Not available)	Depositor
$R_{sym}$	0.05	Depositor
$\langle I/\sigma(I) \rangle$ <sup>1</sup>	1.96 (at 2.20Å)	Xtrriage
Refinement program	CNS 1.1	Depositor
R, $R_{free}$	0.202 , 0.247 0.201 , 0.244	Depositor DCC
$R_{free}$ test set	2397 reflections (5.07%)	wwPDB-VP
Wilson B-factor (Å <sup>2</sup> )	34.9	Xtrriage
Anisotropy	0.154	Xtrriage
Bulk solvent $k_{sol}$ (e/Å <sup>3</sup> ), $B_{sol}$ (Å <sup>2</sup> )	0.31 , 29.2	EDS
L-test for twinning <sup>2</sup>	$\langle  L  \rangle = 0.50$ , $\langle L^2 \rangle = 0.34$	Xtrriage
Estimated twinning fraction	0.016 for l,-k,h	Xtrriage
$F_o, F_c$ correlation	0.95	EDS
Total number of atoms	6177	wwPDB-VP
Average B, all atoms (Å <sup>2</sup> )	41.0	wwPDB-VP

Xtrriage's analysis on translational NCS is as follows: *The largest off-origin peak in the Patterson function is 5.35% of the height of the origin peak. No significant pseudotranslation is detected.*

<sup>1</sup>Intensities estimated from amplitudes.

<sup>2</sup>Theoretical values of  $\langle |L| \rangle$ ,  $\langle L^2 \rangle$  for acentric reflections are 0.5, 0.333 respectively for untwinned datasets, and 0.375, 0.2 for perfectly twinned datasets.

## 5 Model quality [i](#)

### 5.1 Standard geometry [i](#)

Bond lengths and bond angles in the following residue types are not validated in this section: MPD

The Z score for a bond length (or angle) is the number of standard deviations the observed value is removed from the expected value. A bond length (or angle) with  $|Z| > 5$  is considered an outlier worth inspection. RMSZ is the root-mean-square of all Z scores of the bond lengths (or angles).

Mol	Chain	Bond lengths		Bond angles	
		RMSZ	# Z  >5	RMSZ	# Z  >5
1	A	0.40	0/989	0.81	0/1333
1	B	0.40	0/998	0.84	1/1345 (0.1%)
1	C	0.45	0/998	0.81	0/1345
1	D	0.40	0/998	0.85	2/1345 (0.1%)
1	E	0.44	0/993	0.79	0/1338
1	F	0.41	0/993	0.82	0/1338
All	All	0.42	0/5969	0.82	3/8044 (0.0%)

There are no bond length outliers.

All (3) bond angle outliers are listed below:

Mol	Chain	Res	Type	Atoms	Z	Observed(°)	Ideal(°)
1	D	102	ILE	N-CA-C	5.61	118.54	113.10
1	D	24	PHE	N-CA-C	5.27	117.93	111.82
1	B	49	THR	N-CA-C	-5.26	106.71	113.23

There are no chirality outliers.

There are no planarity outliers.

### 5.2 Too-close contacts [i](#)

In the following table, the Non-H and H(model) columns list the number of non-hydrogen atoms and hydrogen atoms in the chain respectively. The H(added) column lists the number of hydrogen atoms added and optimized by MolProbity. The Clashes column lists the number of clashes within the asymmetric unit, whereas Symm-Clashes lists symmetry-related clashes.

Mol	Chain	Non-H	H(model)	H(added)	Clashes	Symm-Clashes
1	A	974	0	968	24	0
1	B	983	0	973	23	0

*Continued on next page...*

Continued from previous page...

Mol	Chain	Non-H	H(model)	H(added)	Clashes	Symm-Clashes
1	C	983	0	973	17	0
1	D	983	0	973	20	0
1	E	978	0	971	31	0
1	F	978	0	971	18	0
2	A	8	0	14	0	0
2	E	8	0	13	0	0
3	A	57	0	0	1	0
3	B	43	0	0	1	0
3	C	53	0	0	2	0
3	D	56	0	0	2	0
3	E	41	0	0	1	0
3	F	32	0	0	0	0
All	All	6177	0	5856	123	0

The all-atom clashscore is defined as the number of clashes found per 1000 atoms (including hydrogen atoms). The all-atom clashscore for this structure is 10.

The worst 5 of 123 close contacts within the same asymmetric unit are listed below, sorted by their clash magnitude.

Atom-1	Atom-2	Interatomic distance (Å)	Clash overlap (Å)
1:A:66:ILE:HD12	1:A:108:ASP:HB3	1.59	0.83
1:B:72:MET:HE2	1:B:98:LEU:HD23	1.61	0.82
1:A:28:MET:HE1	1:D:15:ASN:HB3	1.63	0.80
1:A:72:MET:HE1	1:A:101:MET:HB2	1.66	0.76
1:B:90:ARG:HD2	3:B:148:HOH:O	1.87	0.73

There are no symmetry-related clashes.

## 5.3 Torsion angles [i](#)

### 5.3.1 Protein backbone [i](#)

In the following table, the Percentiles column shows the percent Ramachandran outliers of the chain as a percentile score with respect to all X-ray entries followed by that with respect to entries of similar resolution.

The Analysed column shows the number of residues for which the backbone conformation was analysed, and the total number of residues.

Mol	Chain	Analysed	Favoured	Allowed	Outliers	Percentiles	
1	A	115/137 (84%)	114 (99%)	1 (1%)	0	100	100
1	B	117/137 (85%)	116 (99%)	1 (1%)	0	100	100
1	C	117/137 (85%)	116 (99%)	1 (1%)	0	100	100
1	D	117/137 (85%)	117 (100%)	0	0	100	100
1	E	116/137 (85%)	114 (98%)	2 (2%)	0	100	100
1	F	116/137 (85%)	115 (99%)	1 (1%)	0	100	100
All	All	698/822 (85%)	692 (99%)	6 (1%)	0	100	100

There are no Ramachandran outliers to report.

### 5.3.2 Protein sidechains [i](#)

In the following table, the Percentiles column shows the percent sidechain outliers of the chain as a percentile score with respect to all X-ray entries followed by that with respect to entries of similar resolution.

The Analysed column shows the number of residues for which the sidechain conformation was analysed, and the total number of residues.

Mol	Chain	Analysed	Rotameric	Outliers	Percentiles	
1	A	109/126 (86%)	103 (94%)	6 (6%)	19	24
1	B	109/126 (86%)	102 (94%)	7 (6%)	16	19
1	C	109/126 (86%)	102 (94%)	7 (6%)	16	19
1	D	109/126 (86%)	105 (96%)	4 (4%)	30	41
1	E	109/126 (86%)	105 (96%)	4 (4%)	30	41
1	F	109/126 (86%)	107 (98%)	2 (2%)	51	68
All	All	654/756 (86%)	624 (95%)	30 (5%)	24	32

5 of 30 residues with a non-rotameric sidechain are listed below:

Mol	Chain	Res	Type
1	C	32	GLU
1	E	92	GLU
1	C	92	GLU
1	F	71	ARG
1	E	4	LEU

Sometimes sidechains can be flipped to improve hydrogen bonding and reduce clashes. 5 of 18 such sidechains are listed below:

Mol	Chain	Res	Type
1	E	65	ASN
1	F	21	ASN
1	F	17	GLN
1	C	13	ASN
1	E	17	GLN

### 5.3.3 RNA [i](#)

There are no RNA molecules in this entry.

### 5.4 Non-standard residues in protein, DNA, RNA chains [i](#)

There are no non-standard protein/DNA/RNA residues in this entry.

### 5.5 Carbohydrates [i](#)

There are no oligosaccharides in this entry.

### 5.6 Ligand geometry [i](#)

2 ligands are modelled in this entry.

In the following table, the Counts columns list the number of bonds (or angles) for which Mogul statistics could be retrieved, the number of bonds (or angles) that are observed in the model and the number of bonds (or angles) that are defined in the Chemical Component Dictionary. The Link column lists molecule types, if any, to which the group is linked. The Z score for a bond length (or angle) is the number of standard deviations the observed value is removed from the expected value. A bond length (or angle) with  $|Z| > 2$  is considered an outlier worth inspection. RMSZ is the root-mean-square of all Z scores of the bond lengths (or angles).

Mol	Type	Chain	Res	Link	Bond lengths			Bond angles		
					Counts	RMSZ	$\# Z  > 2$	Counts	RMSZ	$\# Z  > 2$
2	MPD	E	502	-	7,7,7	1.53	2 (28%)	9,10,10	1.52	2 (22%)
2	MPD	A	501	-	7,7,7	1.46	2 (28%)	9,10,10	1.46	2 (22%)

In the following table, the Chirals column lists the number of chiral outliers, the number of chiral centers analysed, the number of these observed in the model and the number defined in the Chemical Component Dictionary. Similar counts are reported in the Torsion and Rings columns. '-' means no outliers of that kind were identified.

Mol	Type	Chain	Res	Link	Chirals	Torsions	Rings
2	MPD	E	502	-	1/1/2/2	0/5/5/5	-
2	MPD	A	501	-	1/1/2/2	0/5/5/5	-

All (4) bond length outliers are listed below:

Mol	Chain	Res	Type	Atoms	Z	Observed(Å)	Ideal(Å)
2	E	502	MPD	C1-C2	2.68	1.60	1.52
2	A	501	MPD	C1-C2	2.67	1.60	1.52
2	E	502	MPD	O2-C2	-2.36	1.39	1.44
2	A	501	MPD	O2-C2	-2.20	1.39	1.44

All (4) bond angle outliers are listed below:

Mol	Chain	Res	Type	Atoms	Z	Observed(°)	Ideal(°)
2	E	502	MPD	O2-C2-C1	-2.89	98.98	107.99
2	A	501	MPD	O2-C2-C1	-2.63	99.79	107.99
2	A	501	MPD	O2-C2-C3	2.36	118.09	109.27
2	E	502	MPD	O2-C2-C3	2.30	117.89	109.27

All (2) chirality outliers are listed below:

Mol	Chain	Res	Type	Atom
2	A	501	MPD	C4
2	E	502	MPD	C4

There are no torsion outliers.

There are no ring outliers.

No monomer is involved in short contacts.

## 5.7 Other polymers [i](#)

There are no such residues in this entry.

## 5.8 Polymer linkage issues [i](#)

There are no chain breaks in this entry.

## 6 Fit of model and data [i](#)

### 6.1 Protein, DNA and RNA chains [i](#)

In the following table, the column labelled ‘#RSRZ> 2’ contains the number (and percentage) of RSRZ outliers, followed by percent RSRZ outliers for the chain as percentile scores relative to all X-ray entries and entries of similar resolution. The OWAB column contains the minimum, median, 95<sup>th</sup> percentile and maximum values of the occupancy-weighted average B-factor per residue. The column labelled ‘Q< 0.9’ lists the number of (and percentage) of residues with an average occupancy less than 0.9.

Mol	Chain	Analysed	<RSRZ>	#RSRZ>2	OWAB(Å <sup>2</sup> )	Q<0.9
1	A	117/137 (85%)	-0.01	3 (2%) 57 54	23, 38, 60, 96	0
1	B	119/137 (86%)	0.03	3 (2%) 58 55	26, 43, 64, 77	0
1	C	119/137 (86%)	-0.16	2 (1%) 69 66	25, 37, 54, 74	0
1	D	119/137 (86%)	-0.04	2 (1%) 69 66	26, 40, 60, 70	0
1	E	118/137 (86%)	-0.05	4 (3%) 48 45	23, 38, 60, 89	0
1	F	118/137 (86%)	0.02	2 (1%) 69 66	23, 41, 62, 75	0
All	All	710/822 (86%)	-0.03	16 (2%) 61 58	23, 40, 63, 96	0

The worst 5 of 16 RSRZ outliers are listed below:

Mol	Chain	Res	Type	RSRZ
1	B	115	GLY	3.6
1	F	115	GLY	3.4
1	D	-3	ARG	3.3
1	A	115	GLY	3.2
1	E	115	GLY	3.2

### 6.2 Non-standard residues in protein, DNA, RNA chains [i](#)

There are no non-standard protein/DNA/RNA residues in this entry.

### 6.3 Carbohydrates [i](#)

There are no oligosaccharides in this entry.

## 6.4 Ligands [i](#)

In the following table, the Atoms column lists the number of modelled atoms in the group and the number defined in the chemical component dictionary. The B-factors column lists the minimum, median, 95<sup>th</sup> percentile and maximum values of B factors of atoms in the group. The column labelled 'Q< 0.9' lists the number of atoms with occupancy less than 0.9.

Mol	Type	Chain	Res	Atoms	RSCC	RSR	B-factors(Å <sup>2</sup> )	Q<0.9
2	MPD	A	501	8/8	0.77	0.24	82,83,84,84	0
2	MPD	E	502	8/8	0.87	0.15	48,50,53,54	0

## 6.5 Other polymers [i](#)

There are no such residues in this entry.