



Full wwPDB X-ray Structure Validation Report ⓘ

Mar 8, 2026 – 05:31 PM UTC

PDB ID : 2ICS / pdb_00002ics
Title : Crystal structure of an adenine deaminase
Authors : Sugadev, R.; Kumaran, D.; Burley, S.K.; Swaminathan, S.; New York SGX
Research Center for Structural Genomics (NYSGXRC)
Deposited on : 2006-09-13
Resolution : 2.30 Å(reported)

This is a Full wwPDB X-ray Structure Validation Report for a publicly released PDB entry.

We welcome your comments at validation@mail.wwpdb.org

A user guide is available at

<https://www.wwpdb.org/validation/2017/XrayValidationReportHelp>

with specific help available everywhere you see the ⓘ symbol.

The types of validation reports are described at

<http://www.wwpdb.org/validation/2017/FAQs#types>.

The following versions of software and data (see [references ⓘ](#)) were used in the production of this report:

MolProbity : 4-5-2 with Phenix2.0
Mogul : 2022.3.0, CSD as543be (2022)
Xtriage (Phenix) : 2.0
EDS : 3.0
Percentile statistics : 20250101.v01 (using entries in the PDB archive January 1st 2025)
CCP4 : 9.0.010 (Gargrove)
Density-Fitness : 1.0.12
Ideal geometry (proteins) : Engh & Huber (2001)
Ideal geometry (DNA, RNA) : Parkinson et al. (1996)
Validation Pipeline (wwPDB-VP) : 2.49

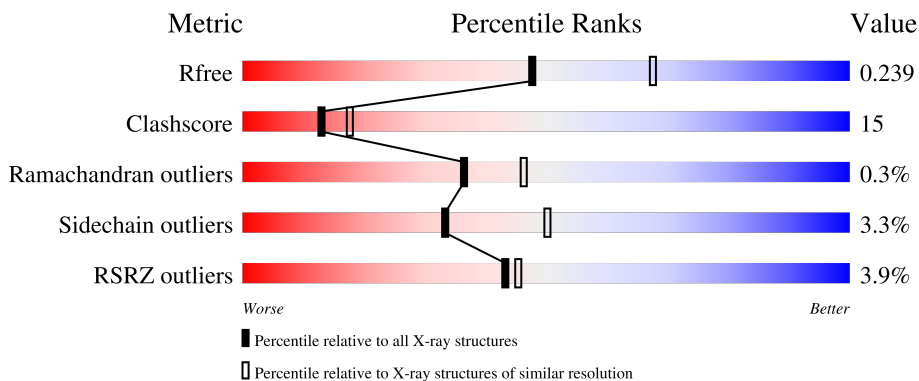
1 Overall quality at a glance

The following experimental techniques were used to determine the structure:

X-RAY DIFFRACTION

The reported resolution of this entry is 2.30 Å.

Percentile scores (ranging between 0-100) for global validation metrics of the entry are shown in the following graphic. The table shows the number of entries on which the scores are based.



Metric	Whole archive (#Entries)	Similar resolution (#Entries, resolution range(Å))
R_{free}	180053	6319 (2.30-2.30)
Clashscore	190562	6919 (2.30-2.30)
Ramachandran outliers	187476	6854 (2.30-2.30)
Sidechain outliers	187428	6854 (2.30-2.30)
RSRZ outliers	180081	6325 (2.30-2.30)

The table below summarises the geometric issues observed across the polymeric chains and their fit to the electron density. The red, orange, yellow and green segments of the lower bar indicate the fraction of residues that contain outliers for ≥ 3 , 2, 1 and 0 types of geometric quality criteria respectively. A grey segment represents the fraction of residues that are not modelled. The numeric value for each fraction is indicated below the corresponding segment, with a dot representing fractions $\leq 5\%$. The upper red bar (where present) indicates the fraction of residues that have poor fit to the electron density. The numeric value is given above the bar.

Mol	Chain	Length	Quality of chain
1	A	379	

2 Entry composition [i](#)

There are 4 unique types of molecules in this entry. The entry contains 2976 atoms, of which 0 are hydrogens and 0 are deuteriums.

In the tables below, the ZeroOcc column contains the number of atoms modelled with zero occupancy, the AltConf column contains the number of residues with at least one atom in alternate conformation and the Trace column contains the number of residues modelled with at most 2 atoms.

- Molecule 1 is a protein called Adenine Deaminase.

Mol	Chain	Residues	Atoms						ZeroOcc	AltConf	Trace
			Total	C	N	O	S	Se			
1	A	368	2856	1812	477	558	2	7	0	0	0

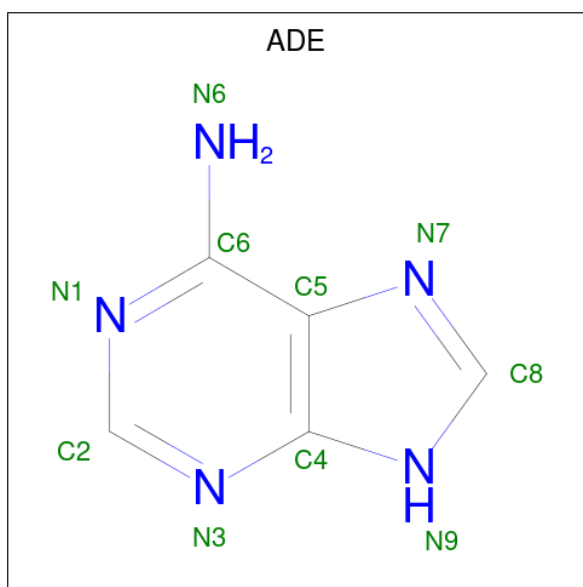
There are 18 discrepancies between the modelled and reference sequences:

Chain	Residue	Modelled	Actual	Comment	Reference
A	1	MSE	-	initiating methionine	UNP Q837K0
A	2	SER	-	cloning artifact	UNP Q837K0
A	3	LEU	-	cloning artifact	UNP Q837K0
A	18	MSE	MET	modified residue	UNP Q837K0
A	67	MSE	MET	modified residue	UNP Q837K0
A	157	MSE	MET	modified residue	UNP Q837K0
A	186	MSE	MET	modified residue	UNP Q837K0
A	203	MSE	MET	modified residue	UNP Q837K0
A	264	MSE	MET	modified residue	UNP Q837K0
A	290	MSE	MET	modified residue	UNP Q837K0
A	372	GLU	-	cloning artifact	UNP Q837K0
A	373	GLY	-	cloning artifact	UNP Q837K0
A	374	HIS	-	expression tag	UNP Q837K0
A	375	HIS	-	expression tag	UNP Q837K0
A	376	HIS	-	expression tag	UNP Q837K0
A	377	HIS	-	expression tag	UNP Q837K0
A	378	HIS	-	expression tag	UNP Q837K0
A	379	HIS	-	expression tag	UNP Q837K0

- Molecule 2 is ZINC ION (CCD ID: ZN) (formula: Zn).

Mol	Chain	Residues	Atoms		ZeroOcc	AltConf
2	A	2	Total	Zn	0	0
			2	2		

- Molecule 3 is ADENINE (CCD ID: ADE) (formula: C₅H₅N₅).



Mol	Chain	Residues	Atoms			ZeroOcc	AltConf
3	A	1	Total	C	N	0	0
			10	5	5		

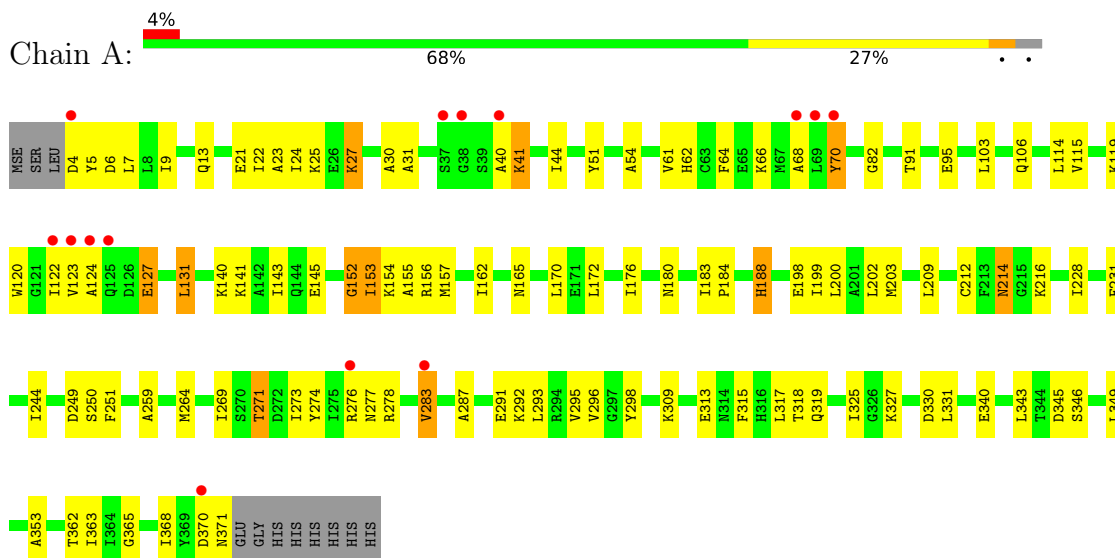
- Molecule 4 is water.

Mol	Chain	Residues	Atoms		ZeroOcc	AltConf
4	A	108	Total	O	0	0
			108	108		

3 Residue-property plots [i](#)

These plots are drawn for all protein, RNA, DNA and oligosaccharide chains in the entry. The first graphic for a chain summarises the proportions of the various outlier classes displayed in the second graphic. The second graphic shows the sequence view annotated by issues in geometry and electron density. Residues are color-coded according to the number of geometric quality criteria for which they contain at least one outlier: green = 0, yellow = 1, orange = 2 and red = 3 or more. A red dot above a residue indicates a poor fit to the electron density ($RSRZ > 2$). Stretches of 2 or more consecutive residues without any outlier are shown as a green connector. Residues present in the sample, but not in the model, are shown in grey.

- Molecule 1: Adenine Deaminase



4 Data and refinement statistics

Property	Value	Source
Space group	P 21 21 2	Depositor
Cell constants a, b, c, α , β , γ	62.37Å 141.69Å 47.40Å 90.00° 90.00° 90.00°	Depositor
Resolution (Å)	46.82 – 2.30 46.82 – 2.30	Depositor EDS
% Data completeness (in resolution range)	98.9 (46.82-2.30) 98.9 (46.82-2.30)	Depositor EDS
R_{merge}	0.11	Depositor
R_{sym}	(Not available)	Depositor
$\langle I/\sigma(I) \rangle$ ¹	3.75 (at 2.14Å)	Xtrriage
Refinement program	CNS 1.1	Depositor
R, R_{free}	0.198 , 0.239 0.198 , 0.239	Depositor DCC
R_{free} test set	1328 reflections (5.70%)	wwPDB-VP
Wilson B-factor (Å ²)	31.8	Xtrriage
Anisotropy	0.162	Xtrriage
Bulk solvent k_{sol} (e/Å ³), B_{sol} (Å ²)	0.38 , 39.0	EDS
L-test for twinning ²	$\langle L \rangle = 0.48$, $\langle L^2 \rangle = 0.31$	Xtrriage
Estimated twinning fraction	No twinning to report.	Xtrriage
F_o, F_c correlation	0.94	EDS
Total number of atoms	2976	wwPDB-VP
Average B, all atoms (Å ²)	33.0	wwPDB-VP

Xtrriage's analysis on translational NCS is as follows: *The largest off-origin peak in the Patterson function is 6.73% of the height of the origin peak. No significant pseudotranslation is detected.*

¹Intensities estimated from amplitudes.

²Theoretical values of $\langle |L| \rangle$, $\langle L^2 \rangle$ for acentric reflections are 0.5, 0.333 respectively for untwinned datasets, and 0.375, 0.2 for perfectly twinned datasets.

5 Model quality [i](#)

5.1 Standard geometry [i](#)

Bond lengths and bond angles in the following residue types are not validated in this section: KCX, ZN, ADE

The Z score for a bond length (or angle) is the number of standard deviations the observed value is removed from the expected value. A bond length (or angle) with $|Z| > 5$ is considered an outlier worth inspection. RMSZ is the root-mean-square of all Z scores of the bond lengths (or angles).

Mol	Chain	Bond lengths		Bond angles	
		RMSZ	# Z >5	RMSZ	# Z >5
1	A	0.41	1/2887 (0.0%)	0.93	6/3901 (0.2%)

Chiral center outliers are detected by calculating the chiral volume of a chiral center and verifying if the center is modelled as a planar moiety or with the opposite hand. A planarity outlier is detected by checking planarity of atoms in a peptide group, atoms in a mainchain group or atoms of a sidechain that are expected to be planar.

Mol	Chain	#Chirality outliers	#Planarity outliers
1	A	0	1

All (1) bond length outliers are listed below:

Mol	Chain	Res	Type	Atoms	Z	Observed(Å)	Ideal(Å)
1	A	152	GLY	C-N	7.22	1.43	1.33

All (6) bond angle outliers are listed below:

Mol	Chain	Res	Type	Atoms	Z	Observed(°)	Ideal(°)
1	A	162	ILE	N-CA-C	6.58	120.37	112.80
1	A	250	SER	N-CA-C	6.26	120.95	112.88
1	A	271	THR	N-CA-C	6.11	120.86	113.41
1	A	244	ILE	N-CA-C	5.98	116.10	110.30
1	A	54	ALA	N-CA-C	-5.05	103.39	110.50
1	A	212	CYS	N-CA-C	5.01	117.39	111.33

There are no chirality outliers.

All (1) planarity outliers are listed below:

Mol	Chain	Res	Type	Group
1	A	153	ILE	Mainchain

5.2 Too-close contacts [i](#)

In the following table, the Non-H and H(model) columns list the number of non-hydrogen atoms and hydrogen atoms in the chain respectively. The H(added) column lists the number of hydrogen atoms added and optimized by MolProbity. The Clashes column lists the number of clashes within the asymmetric unit, whereas Symm-Clashes lists symmetry-related clashes.

Mol	Chain	Non-H	H(model)	H(added)	Clashes	Symm-Clashes
1	A	2856	0	2846	86	0
2	A	2	0	0	0	0
3	A	10	0	4	0	0
4	A	108	0	0	4	0
All	All	2976	0	2850	86	0

The all-atom clashscore is defined as the number of clashes found per 1000 atoms (including hydrogen atoms). The all-atom clashscore for this structure is 15.

All (86) close contacts within the same asymmetric unit are listed below, sorted by their clash magnitude.

Atom-1	Atom-2	Interatomic distance (Å)	Clash overlap (Å)
1:A:155:ALA:HB1	1:A:157:MSE:HE2	1.15	1.10
1:A:199:ILE:HG22	1:A:203:MSE:HE2	1.37	1.06
1:A:249:ASP:HA	1:A:346:SER:HB3	1.54	0.90
1:A:44:ILE:HD11	1:A:368:ILE:HD13	1.59	0.84
1:A:228:ILE:HD11	1:A:259:ALA:HA	1.57	0.84
1:A:200:LEU:HD23	1:A:203:MSE:HE3	1.62	0.80
1:A:200:LEU:HD23	1:A:203:MSE:CE	2.12	0.79
1:A:155:ALA:HB1	1:A:157:MSE:CE	2.08	0.77
1:A:27:LYS:HG3	1:A:365:GLY:O	1.86	0.75
1:A:200:LEU:HA	1:A:203:MSE:HE3	1.67	0.74
1:A:319:GLN:HG3	4:A:1154:HOH:O	1.90	0.69
1:A:292:LYS:O	1:A:295:VAL:HG12	1.94	0.68
1:A:214:ASN:HD22	1:A:216:LYS:H	1.40	0.68
1:A:140:LYS:HA	1:A:180:ASN:HD21	1.58	0.68
1:A:25:LYS:HG2	1:A:30:ALA:HB2	1.78	0.65
1:A:152:GLY:HA2	1:A:183:ILE:HG12	1.78	0.65
1:A:199:ILE:HG22	1:A:203:MSE:CE	2.23	0.64
1:A:41:LYS:HB3	1:A:41:LYS:NZ	2.14	0.63
1:A:157:MSE:HE3	1:A:170:LEU:HA	1.79	0.63

Continued on next page...

Continued from previous page...

Atom-1	Atom-2	Interatomic distance (Å)	Clash overlap (Å)
1:A:188:HIS:C	1:A:188:HIS:CD2	2.78	0.62
1:A:120:TRP:O	1:A:123:VAL:HG13	1.99	0.62
1:A:103:LEU:O	1:A:106:GLN:HG2	2.00	0.61
1:A:123:VAL:HG23	1:A:124:ALA:H	1.65	0.60
1:A:123:VAL:HG23	1:A:124:ALA:N	2.16	0.60
1:A:122:ILE:HA	1:A:127:GLU:HG2	1.83	0.60
1:A:330:ASP:C	1:A:331:LEU:HD12	2.27	0.59
1:A:228:ILE:HD11	1:A:259:ALA:CA	2.31	0.59
1:A:6:ASP:OD2	1:A:25:LYS:HA	2.02	0.59
1:A:203:MSE:HE1	1:A:209:LEU:HD13	1.85	0.59
1:A:44:ILE:HD11	1:A:368:ILE:CD1	2.30	0.58
1:A:345:ASP:OD2	1:A:349:LEU:HB2	2.03	0.58
1:A:70:TYR:CD2	1:A:122:ILE:HD12	2.39	0.57
1:A:91:THR:HG23	1:A:122:ILE:HD11	1.87	0.56
1:A:273:ILE:HD11	1:A:278:ARG:HB2	1.87	0.56
1:A:61:VAL:CG1	1:A:62:HIS:N	2.69	0.56
1:A:200:LEU:HA	1:A:203:MSE:CE	2.36	0.55
1:A:198:GLU:O	1:A:202:LEU:HD13	2.06	0.54
1:A:228:ILE:CD1	1:A:259:ALA:HA	2.35	0.54
1:A:287:ALA:O	1:A:291:GLU:HG3	2.07	0.54
1:A:115:VAL:HG13	1:A:153:ILE:HG22	1.90	0.53
1:A:200:LEU:HD23	1:A:203:MSE:HE1	1.90	0.52
1:A:277:ASN:O	1:A:283:VAL:O	2.28	0.52
1:A:22:ILE:N	1:A:22:ILE:HD12	2.25	0.51
1:A:340:GLU:HA	1:A:353:ALA:O	2.11	0.50
1:A:293:LEU:HD22	1:A:298:TYR:CE2	2.46	0.50
1:A:269:ILE:CD1	1:A:293:LEU:HD13	2.42	0.50
1:A:325:ILE:HD11	4:A:1182:HOH:O	2.12	0.50
1:A:9:ILE:HD11	1:A:363:ILE:CD1	2.42	0.49
1:A:317:LEU:N	1:A:317:LEU:HD22	2.27	0.49
1:A:70:TYR:HD2	1:A:122:ILE:HD12	1.77	0.49
1:A:370:ASP:O	1:A:371:ASN:HB2	2.12	0.49
1:A:70:TYR:HD2	1:A:122:ILE:CD1	2.26	0.48
1:A:95:GLU:HG2	1:A:119:LYS:HB2	1.97	0.47
1:A:269:ILE:HG12	1:A:293:LEU:HD13	1.96	0.47
1:A:157:MSE:HE3	1:A:170:LEU:CA	2.44	0.46
1:A:343:LEU:HD11	1:A:353:ALA:HB2	1.97	0.46
1:A:141:LYS:HB3	1:A:145:GLU:OE2	2.16	0.46
1:A:249:ASP:CA	1:A:346:SER:HB3	2.36	0.46
1:A:13:GLN:O	1:A:51:TYR:HA	2.16	0.46
1:A:131:LEU:HD13	1:A:165:ASN:OD1	2.16	0.46

Continued on next page...

Continued from previous page...

Atom-1	Atom-2	Interatomic distance (Å)	Clash overlap (Å)
1:A:271:THR:HB	1:A:283:VAL:HG21	1.99	0.45
1:A:315:PHE:HB2	1:A:317:LEU:HD21	1.98	0.45
1:A:214:ASN:C	1:A:214:ASN:ND2	2.76	0.44
1:A:251:PHE:O	1:A:345:ASP:HB2	2.18	0.44
1:A:143:ILE:HD12	1:A:180:ASN:ND2	2.33	0.44
1:A:64:PHE:CE2	1:A:66:LYS:HB2	2.53	0.43
1:A:7:LEU:HB3	1:A:24:ILE:HB	2.00	0.43
1:A:156:ARG:HA	1:A:188:HIS:HB3	2.00	0.43
1:A:318:THR:O	1:A:327:LYS:HE3	2.18	0.43
1:A:5:TYR:O	1:A:40:ALA:HA	2.19	0.43
1:A:172:LEU:O	1:A:176:ILE:HG13	2.18	0.43
1:A:115:VAL:CG1	1:A:153:ILE:HG22	2.49	0.43
1:A:184:PRO:HA	4:A:1178:HOH:O	2.18	0.43
1:A:228:ILE:HD13	1:A:264:MSE:SE	2.69	0.43
1:A:21:GLU:C	1:A:22:ILE:HD12	2.44	0.42
1:A:274:TYR:CZ	1:A:276:ARG:HB2	2.54	0.42
1:A:309:LYS:HE2	1:A:313:GLU:OE2	2.19	0.42
1:A:23:ALA:HB3	1:A:31:ALA:HB3	2.01	0.42
1:A:200:LEU:HD12	1:A:231:PHE:HD1	1.83	0.42
1:A:95:GLU:HG3	1:A:119:LYS:HD2	2.02	0.41
1:A:82:GLY:HA2	1:A:362:THR:OG1	2.20	0.41
1:A:200:LEU:HD12	1:A:231:PHE:CD1	2.56	0.41
1:A:274:TYR:CE1	1:A:276:ARG:HB2	2.56	0.41
1:A:27:LYS:N	1:A:27:LYS:HD3	2.36	0.41
1:A:119:LYS:HA	4:A:1155:HOH:O	2.21	0.40
1:A:292:LYS:O	1:A:296:VAL:HG23	2.22	0.40

There are no symmetry-related clashes.

5.3 Torsion angles [\(i\)](#)

5.3.1 Protein backbone [\(i\)](#)

In the following table, the Percentiles column shows the percent Ramachandran outliers of the chain as a percentile score with respect to all X-ray entries followed by that with respect to entries of similar resolution.

The Analysed column shows the number of residues for which the backbone conformation was analysed, and the total number of residues.

Mol	Chain	Analysed	Favoured	Allowed	Outliers	Percentiles
1	A	365/379 (96%)	348 (95%)	16 (4%)	1 (0%)	36 46

All (1) Ramachandran outliers are listed below:

Mol	Chain	Res	Type
1	A	68	ALA

5.3.2 Protein sidechains [i](#)

In the following table, the Percentiles column shows the percent sidechain outliers of the chain as a percentile score with respect to all X-ray entries followed by that with respect to entries of similar resolution.

The Analysed column shows the number of residues for which the sidechain conformation was analysed, and the total number of residues.

Mol	Chain	Analysed	Rotameric	Outliers	Percentiles
1	A	305/307 (99%)	295 (97%)	10 (3%)	33 50

All (10) residues with a non-rotameric sidechain are listed below:

Mol	Chain	Res	Type
1	A	4	ASP
1	A	27	LYS
1	A	41	LYS
1	A	70	TYR
1	A	114	LEU
1	A	127	GLU
1	A	131	LEU
1	A	188	HIS
1	A	214	ASN
1	A	283	VAL

Sometimes sidechains can be flipped to improve hydrogen bonding and reduce clashes. All (7) such sidechains are listed below:

Mol	Chain	Res	Type
1	A	16	ASN
1	A	105	GLN
1	A	165	ASN
1	A	180	ASN
1	A	214	ASN

Continued on next page...

Continued from previous page...

Mol	Chain	Res	Type
1	A	337	GLN
1	A	371	ASN

5.3.3 RNA [i](#)

There are no RNA molecules in this entry.

5.4 Non-standard residues in protein, DNA, RNA chains [i](#)

1 non-standard protein/DNA/RNA residue is modelled in this entry.

In the following table, the Counts columns list the number of bonds (or angles) for which Mogul statistics could be retrieved, the number of bonds (or angles) that are observed in the model and the number of bonds (or angles) that are defined in the Chemical Component Dictionary. The Link column lists molecule types, if any, to which the group is linked. The Z score for a bond length (or angle) is the number of standard deviations the observed value is removed from the expected value. A bond length (or angle) with $|Z| > 2$ is considered an outlier worth inspection. RMSZ is the root-mean-square of all Z scores of the bond lengths (or angles).

Mol	Type	Chain	Res	Link	Bond lengths			Bond angles		
					Counts	RMSZ	# Z > 2	Counts	RMSZ	# Z > 2
1	KCX	A	154	1,2	10,11,12	7.74	2 (20%)	6,12,14	2.55	2 (33%)

In the following table, the Chirals column lists the number of chiral outliers, the number of chiral centers analysed, the number of these observed in the model and the number defined in the Chemical Component Dictionary. Similar counts are reported in the Torsion and Rings columns. '-' means no outliers of that kind were identified.

Mol	Type	Chain	Res	Link	Chirals	Torsions	Rings
1	KCX	A	154	1,2	-	3/9/10/12	-

All (2) bond length outliers are listed below:

Mol	Chain	Res	Type	Atoms	Z	Observed(Å)	Ideal(Å)
1	A	154	KCX	CE-NZ	-23.24	0.93	1.46
1	A	154	KCX	OQ1-CX	7.33	1.35	1.21

All (2) bond angle outliers are listed below:

Mol	Chain	Res	Type	Atoms	Z	Observed(°)	Ideal(°)
1	A	154	KCX	CD-CE-NZ	5.22	126.84	112.20

Continued on next page...

Continued from previous page...

Mol	Chain	Res	Type	Atoms	Z	Observed(°)	Ideal(°)
1	A	154	KCX	CE-NZ-CX	3.17	127.36	121.98

There are no chirality outliers.

All (3) torsion outliers are listed below:

Mol	Chain	Res	Type	Atoms
1	A	154	KCX	OQ1-CX-NZ-CE
1	A	154	KCX	OQ2-CX-NZ-CE
1	A	154	KCX	CG-CD-CE-NZ

There are no ring outliers.

No monomer is involved in short contacts.

5.5 Carbohydrates [i](#)

There are no oligosaccharides in this entry.

5.6 Ligand geometry [i](#)

Of 3 ligands modelled in this entry, 2 are monoatomic - leaving 1 for Mogul analysis.

In the following table, the Counts columns list the number of bonds (or angles) for which Mogul statistics could be retrieved, the number of bonds (or angles) that are observed in the model and the number of bonds (or angles) that are defined in the Chemical Component Dictionary. The Link column lists molecule types, if any, to which the group is linked. The Z score for a bond length (or angle) is the number of standard deviations the observed value is removed from the expected value. A bond length (or angle) with $|Z| > 2$ is considered an outlier worth inspection. RMSZ is the root-mean-square of all Z scores of the bond lengths (or angles).

Mol	Type	Chain	Res	Link	Bond lengths			Bond angles		
					Counts	RMSZ	$\# Z > 2$	Counts	RMSZ	$\# Z > 2$
3	ADE	A	1114	2	11,11,11	1.18	1 (9%)	15,15,15	2.79	6 (40%)

In the following table, the Chirals column lists the number of chiral outliers, the number of chiral centers analysed, the number of these observed in the model and the number defined in the Chemical Component Dictionary. Similar counts are reported in the Torsion and Rings columns. '2' means no outliers of that kind were identified.

Mol	Type	Chain	Res	Link	Chirals	Torsions	Rings
3	ADE	A	1114	2	-	-	0/2/2/2

All (1) bond length outliers are listed below:

Mol	Chain	Res	Type	Atoms	Z	Observed(Å)	Ideal(Å)
3	A	1114	ADE	C5-C4	2.47	1.43	1.39

All (6) bond angle outliers are listed below:

Mol	Chain	Res	Type	Atoms	Z	Observed(°)	Ideal(°)
3	A	1114	ADE	C5-N7-C8	5.21	109.36	103.48
3	A	1114	ADE	N9-C4-N3	5.10	134.95	126.69
3	A	1114	ADE	N3-C2-N1	-4.78	121.34	128.58
3	A	1114	ADE	C5-C4-N3	-3.97	119.52	126.75
3	A	1114	ADE	C4-C5-N7	-2.54	107.14	110.67
3	A	1114	ADE	N9-C8-N7	-2.30	110.37	113.87

There are no chirality outliers.

There are no torsion outliers.

There are no ring outliers.

No monomer is involved in short contacts.

5.7 Other polymers [i](#)

There are no such residues in this entry.

5.8 Polymer linkage issues [i](#)

There are no chain breaks in this entry.

6 Fit of model and data [i](#)

6.1 Protein, DNA and RNA chains [i](#)

In the following table, the column labelled ‘#RSRZ> 2’ contains the number (and percentage) of RSRZ outliers, followed by percent RSRZ outliers for the chain as percentile scores relative to all X-ray entries and entries of similar resolution. The OWAB column contains the minimum, median, 95th percentile and maximum values of the occupancy-weighted average B-factor per residue. The column labelled ‘Q< 0.9’ lists the number of (and percentage) of residues with an average occupancy less than 0.9.

Mol	Chain	Analysed	<RSRZ>	#RSRZ>2	OWAB(Å ²)	Q<0.9
1	A	360/379 (94%)	0.13	14 (3%) 43 45	16, 31, 49, 60	0

All (14) RSRZ outliers are listed below:

Mol	Chain	Res	Type	RSRZ
1	A	70	TYR	4.1
1	A	124	ALA	3.4
1	A	37	SER	3.0
1	A	125	GLN	2.8
1	A	283	VAL	2.8
1	A	122	ILE	2.4
1	A	38	GLY	2.4
1	A	68	ALA	2.3
1	A	123	VAL	2.1
1	A	69	LEU	2.1
1	A	276	ARG	2.1
1	A	40	ALA	2.1
1	A	370	ASP	2.1
1	A	4	ASP	2.0

6.2 Non-standard residues in protein, DNA, RNA chains [i](#)

In the following table, the Atoms column lists the number of modelled atoms in the group and the number defined in the chemical component dictionary. The B-factors column lists the minimum, median, 95th percentile and maximum values of B factors of atoms in the group. The column labelled ‘Q< 0.9’ lists the number of atoms with occupancy less than 0.9.

Mol	Type	Chain	Res	Atoms	RSCC	RSR	B-factors(Å ²)	Q<0.9
1	KCX	A	154	12/13	0.88	0.13	22,23,30,31	0

6.3 Carbohydrates [i](#)

There are no oligosaccharides in this entry.

6.4 Ligands [i](#)

In the following table, the Atoms column lists the number of modelled atoms in the group and the number defined in the chemical component dictionary. The B-factors column lists the minimum, median, 95th percentile and maximum values of B factors of atoms in the group. The column labelled 'Q< 0.9' lists the number of atoms with occupancy less than 0.9.

Mol	Type	Chain	Res	Atoms	RSCC	RSR	B-factors(\AA^2)	Q<0.9
3	ADE	A	1114	10/10	0.67	0.27	75,79,80,80	0
2	ZN	A	401	1/1	1.00	0.01	30,30,30,30	0
2	ZN	A	400	1/1	1.00	0.02	24,24,24,24	0

6.5 Other polymers [i](#)

There are no such residues in this entry.