



Full wwPDB X-ray Structure Validation Report ⓘ

Mar 6, 2026 – 05:45 AM UTC

PDB ID : 2IPF / pdb_00002ipf
Title : Crystal structure of 17alpha-hydroxysteroid dehydrogenase in complex with NADP+ and epi-testosterone
Authors : Faucher, F.; Cantin, L.; Pereira de Jesus-Tran, K.; Luu-the, V.; Labrie, F.; Breton, R.
Deposited on : 2006-10-12
Resolution : 1.85 Å(reported)

This is a Full wwPDB X-ray Structure Validation Report for a publicly released PDB entry.

We welcome your comments at validation@mail.wwpdb.org

A user guide is available at

<https://www.wwpdb.org/validation/2017/XrayValidationReportHelp>

with specific help available everywhere you see the ⓘ symbol.

The types of validation reports are described at

<http://www.wwpdb.org/validation/2017/FAQs#types>.

The following versions of software and data (see [references ⓘ](#)) were used in the production of this report:

MolProbity : 4-5-2 with Phenix2.0
Mogul : 2022.3.0, CSD as543be (2022)
Xtrriage (Phenix) : 2.0
EDS : 3.0
Buster-report : wwPDB partial adaption of 1.1.7 (2018)
Percentile statistics : 20250101.v01 (using entries in the PDB archive January 1st 2025)
CCP4 : 9.0.010 (Gargrove)
Density-Fitness : 1.0.12
Ideal geometry (proteins) : Engh & Huber (2001)
Ideal geometry (DNA, RNA) : Parkinson et al. (1996)
Validation Pipeline (wwPDB-VP) : 2.49

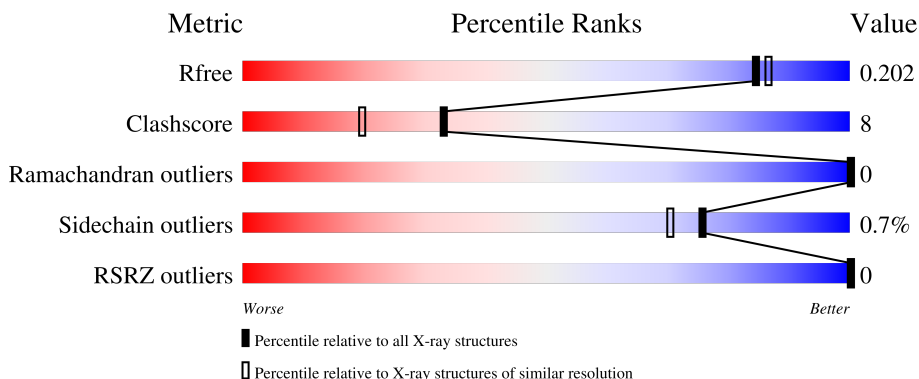
1 Overall quality at a glance

The following experimental techniques were used to determine the structure:

X-RAY DIFFRACTION



The reported resolution of this entry is 1.85 Å.

Percentile scores (ranging between 0-100) for global validation metrics of the entry are shown in the following graphic. The table shows the number of entries on which the scores are based.



Metric	Whole archive (#Entries)	Similar resolution (#Entries, resolution range(Å))
R_{free}	180053	3428 (1.86-1.86)
Clashscore	190562	3579 (1.86-1.86)
Ramachandran outliers	187476	3553 (1.86-1.86)
Sidechain outliers	187428	3553 (1.86-1.86)
RSRZ outliers	180081	3429 (1.86-1.86)

The table below summarises the geometric issues observed across the polymeric chains and their fit to the electron density. The red, orange, yellow and green segments of the lower bar indicate the fraction of residues that contain outliers for ≥ 3 , 2, 1 and 0 types of geometric quality criteria respectively. A grey segment represents the fraction of residues that are not modelled. The numeric value for each fraction is indicated below the corresponding segment, with a dot representing fractions $\leq 5\%$. The upper red bar (where present) indicates the fraction of residues that have poor fit to the electron density. The numeric value is given above the bar.

Mol	Chain	Length	Quality of chain
1	A	318	 84% 15% .
1	B	318	 81% 18%

2 Entry composition [i](#)

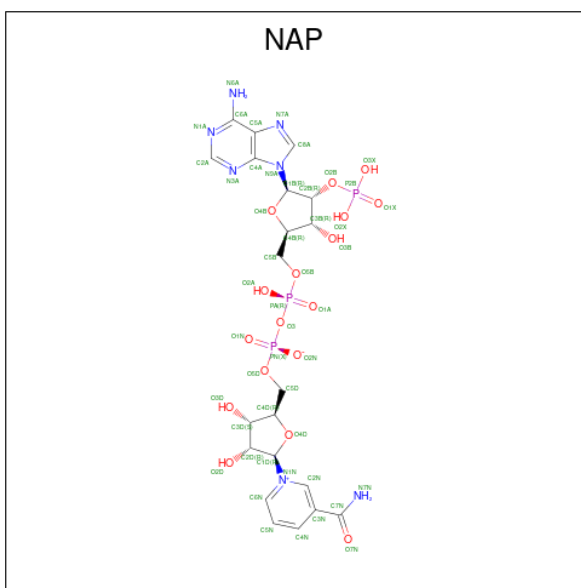
There are 7 unique types of molecules in this entry. The entry contains 6025 atoms, of which 0 are hydrogens and 0 are deuteriums.

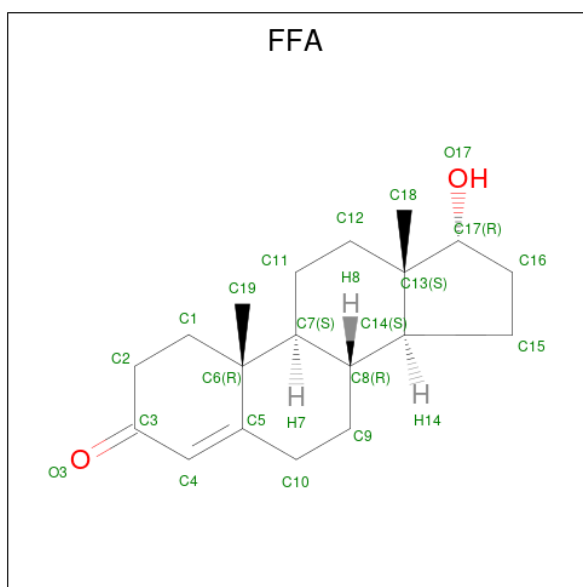
In the tables below, the ZeroOcc column contains the number of atoms modelled with zero occupancy, the AltConf column contains the number of residues with at least one atom in alternate conformation and the Trace column contains the number of residues modelled with at most 2 atoms.

- Molecule 1 is a protein called (3(17)alpha-hydroxysteroid dehydrogenase).

Mol	Chain	Residues	Atoms					ZeroOcc	AltConf	Trace
			Total	C	N	O	S			
1	A	318	Total 2573	C 1649	N 435	O 473	S 16	0	2	0
1	B	318	Total 2578	C 1654	N 436	O 472	S 16	0	3	0

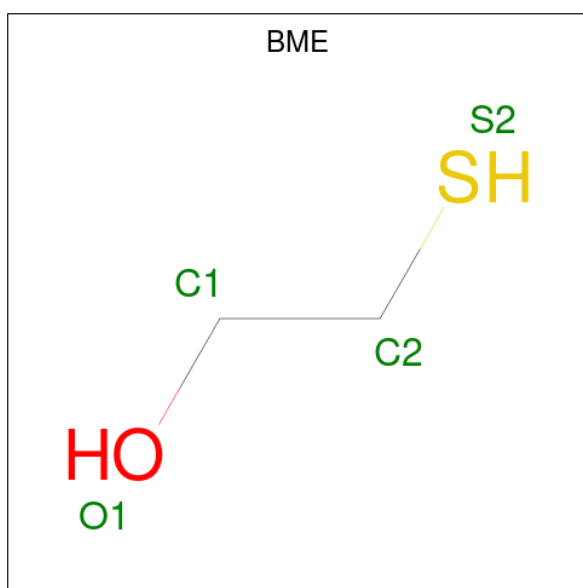
- Molecule 2 is NADP NICOTINAMIDE-ADENINE-DINUCLEOTIDE PHOSPHATE (CCD ID: NAP) (formula: C₂₁H₂₈N₇O₁₇P₃).





Mol	Chain	Residues	Atoms			ZeroOcc	AltConf
3	A	1	Total	C	O	0	0
			21	19	2		
3	B	1	Total	C	O	0	0
			21	19	2		

- Molecule 4 is BETA-MERCAPTOETHANOL (CCD ID: BME) (formula: C_2H_6OS).



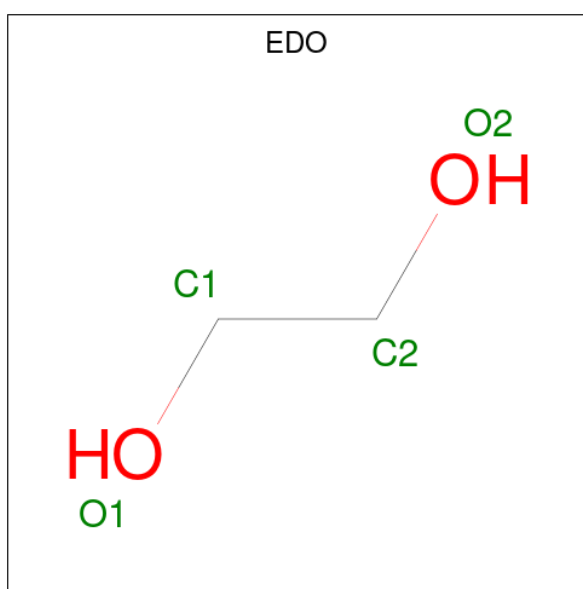
Mol	Chain	Residues	Atoms				ZeroOcc	AltConf
4	A	1	Total	C	O	S	0	0
			4	2	1	1		
4	A	1	Total	C	O	S	0	0
			4	2	1	1		

Continued on next page...

Continued from previous page...

Mol	Chain	Residues	Atoms				ZeroOcc	AltConf
4	A	1	Total	C	O	S	0	0
			4	2	1	1		
4	B	1	Total	C	O	S	0	0
			4	2	1	1		
4	B	1	Total	C	O	S	0	0
			4	2	1	1		
4	B	1	Total	C	O	S	0	0
			4	2	1	1		

- Molecule 5 is 1,2-ETHANEDIOL (CCD ID: EDO) (formula: C₂H₆O₂).



Mol	Chain	Residues	Atoms			ZeroOcc	AltConf
5	A	1	Total	C	O	0	0
			4	2	2		
5	A	1	Total	C	O	0	0
			4	2	2		
5	B	1	Total	C	O	0	0
			4	2	2		

- Molecule 6 is 2-AMINO-2-HYDROXYMETHYL-PROPANE-1,3-DIOL (CCD ID: TRS) (formula: C₄H₁₂NO₃).



Mol	Chain	Residues	Atoms				ZeroOcc	AltConf
			Total	C	N	O		
6	A	1	8	4	1	3	0	0


- Molecule 7 is water.

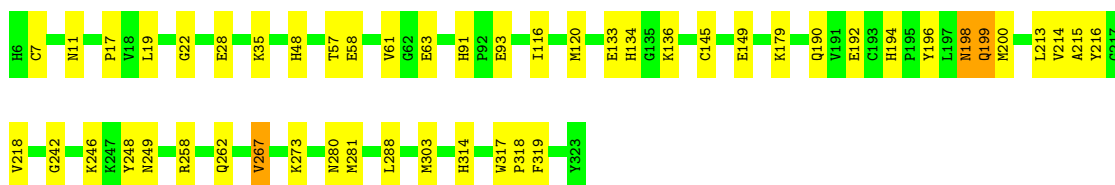
Mol	Chain	Residues	Atoms		ZeroOcc	AltConf
7	A	371	Total	O	0	0
			371	371		
7	B	321	Total	O	0	0
			321	321		

3 Residue-property plots [i](#)


These plots are drawn for all protein, RNA, DNA and oligosaccharide chains in the entry. The first graphic for a chain summarises the proportions of the various outlier classes displayed in the second graphic. The second graphic shows the sequence view annotated by issues in geometry and electron density. Residues are color-coded according to the number of geometric quality criteria for which they contain at least one outlier: green = 0, yellow = 1, orange = 2 and red = 3 or more. A red dot above a residue indicates a poor fit to the electron density ($RSRZ > 2$). Stretches of 2 or more consecutive residues without any outlier are shown as a green connector. Residues present in the sample, but not in the model, are shown in grey.

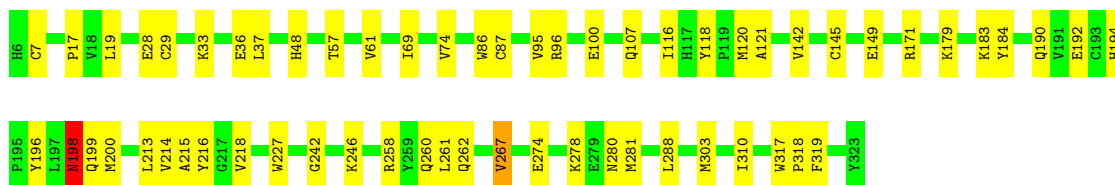
- Molecule 1: (3(17)alpha-hydroxysteroid dehydrogenase)

Chain A:  84% 15%



- Molecule 1: (3(17)alpha-hydroxysteroid dehydrogenase)

Chain B:  81% 18%



4 Data and refinement statistics

Property	Value	Source
Space group	P 1 21 1	Depositor
Cell constants a, b, c, α , β , γ	49.23Å 97.40Å 79.46Å 90.00° 99.26° 90.00°	Depositor
Resolution (Å)	19.64 – 1.85 19.64 – 1.85	Depositor EDS
% Data completeness (in resolution range)	95.1 (19.64-1.85) 95.2 (19.64-1.85)	Depositor EDS
R_{merge}	0.09	Depositor
R_{sym}	0.07	Depositor
$\langle I/\sigma(I) \rangle$ ¹	3.14 (at 1.85Å)	Xtrriage
Refinement program	CNS 1.1	Depositor
R, R_{free}	0.171 , 0.200 0.173 , 0.202	Depositor DCC
R_{free} test set	3032 reflections (5.05%)	wwPDB-VP
Wilson B-factor (Å ²)	16.2	Xtrriage
Anisotropy	0.295	Xtrriage
Bulk solvent k_{sol} (e/Å ³), B_{sol} (Å ²)	0.35 , 50.6	EDS
L-test for twinning ²	$\langle L \rangle = 0.47$, $\langle L^2 \rangle = 0.30$	Xtrriage
Estimated twinning fraction	No twinning to report.	Xtrriage
F_o, F_c correlation	0.96	EDS
Total number of atoms	6025	wwPDB-VP
Average B, all atoms (Å ²)	18.0	wwPDB-VP

Xtrriage's analysis on translational NCS is as follows: *The largest off-origin peak in the Patterson function is 4.26% of the height of the origin peak. No significant pseudotranslation is detected.*

¹Intensities estimated from amplitudes.

²Theoretical values of $\langle |L| \rangle$, $\langle L^2 \rangle$ for acentric reflections are 0.5, 0.333 respectively for untwinned datasets, and 0.375, 0.2 for perfectly twinned datasets.

5 Model quality i

5.1 Standard geometry i

Bond lengths and bond angles in the following residue types are not validated in this section: FFA, BME, TRS, EDO, NAP

The Z score for a bond length (or angle) is the number of standard deviations the observed value is removed from the expected value. A bond length (or angle) with $|Z| > 5$ is considered an outlier worth inspection. RMSZ is the root-mean-square of all Z scores of the bond lengths (or angles).

Mol	Chain	Bond lengths		Bond angles	
		RMSZ	# Z >5	RMSZ	# Z >5
1	A	0.35	0/2633	0.85	9/3561 (0.3%)
1	B	0.33	0/2638	0.85	11/3569 (0.3%)
All	All	0.34	0/5271	0.85	20/7130 (0.3%)

There are no bond length outliers.

All (20) bond angle outliers are listed below:

Mol	Chain	Res	Type	Atoms	Z	Observed(°)	Ideal(°)
1	A	267	VAL	N-CA-C	7.83	119.56	108.36
1	B	319	PHE	N-CA-C	6.67	120.40	112.93
1	A	116	ILE	N-CA-C	-6.57	98.81	108.54
1	A	318	PRO	N-CA-C	6.46	121.94	113.86
1	B	318	PRO	N-CA-C	6.43	121.90	113.86
1	A	319	PHE	N-CA-C	6.40	120.02	112.72
1	B	116	ILE	N-CA-C	-6.26	99.28	108.54
1	A	216	TYR	N-CA-C	-5.80	100.93	109.81
1	B	198	ASN	N-CA-C	5.76	120.05	113.19
1	B	267[A]	VAL	N-CA-C	5.69	117.19	108.71
1	B	267[B]	VAL	N-CA-C	5.69	117.19	108.71
1	A	317	TRP	CA-C-N	5.31	124.93	119.56
1	A	317	TRP	C-N-CA	5.31	124.93	119.56
1	B	215	ALA	N-CA-C	5.28	118.41	109.76
1	B	216	TYR	N-CA-C	-5.17	101.91	109.81
1	A	215	ALA	N-CA-C	5.16	117.89	109.59
1	B	317	TRP	CA-C-N	5.14	124.75	119.56
1	B	317	TRP	C-N-CA	5.14	124.75	119.56
1	A	58	GLU	N-CA-C	5.03	116.76	111.28
1	B	95	VAL	N-CA-C	5.01	115.16	110.30

There are no chirality outliers.

There are no planarity outliers.

5.2 Too-close contacts

In the following table, the Non-H and H(model) columns list the number of non-hydrogen atoms and hydrogen atoms in the chain respectively. The H(added) column lists the number of hydrogen atoms added and optimized by MolProbity. The Clashes column lists the number of clashes within the asymmetric unit, whereas Symm-Clashes lists symmetry-related clashes.

Mol	Chain	Non-H	H(model)	H(added)	Clashes	Symm-Clashes
1	A	2573	0	2559	40	0
1	B	2578	0	2572	43	0
2	A	48	0	25	3	0
2	B	48	0	25	2	0
3	A	21	0	28	0	0
3	B	21	0	28	0	0
4	A	12	0	15	1	0
4	B	12	0	17	3	0
5	A	8	0	10	1	0
5	B	4	0	5	0	0
6	A	8	0	12	0	0
7	A	371	0	0	2	0
7	B	321	0	0	1	0
All	All	6025	0	5296	83	0

The all-atom clashscore is defined as the number of clashes found per 1000 atoms (including hydrogen atoms). The all-atom clashscore for this structure is 8.

All (83) close contacts within the same asymmetric unit are listed below, sorted by their clash magnitude.

Atom-1	Atom-2	Interatomic distance (Å)	Clash overlap (Å)
1:B:29:CYS:SG	4:B:324:BME:S2	2.30	1.30
1:A:7:CYS:SG	4:A:325:BME:S2	2.31	1.29
1:B:7:CYS:SG	4:B:326:BME:S2	2.35	1.19
1:A:258:ARG:HE	1:A:262:GLN:HE21	1.07	0.97
1:B:258:ARG:HE	1:B:262:GLN:HE21	1.11	0.97
1:A:262:GLN:HE22	1:A:288:LEU:H	1.06	0.97
1:B:262:GLN:HE22	1:B:288:LEU:H	1.06	0.90
1:B:145:CYS:SG	4:B:325:BME:S2	2.47	0.87
1:A:11:ASN:HA	5:A:326:EDO:H12	1.67	0.75
1:A:149[A]:GLU:HG2	1:A:179:LYS:HE3	1.69	0.72
1:B:280:ASN:HD21	2:B:2:NAP:H61A	1.37	0.71

Continued on next page...

Continued from previous page...

Atom-1	Atom-2	Interatomic distance (Å)	Clash overlap (Å)
1:B:218:VAL:HG21	1:B:267[A]:VAL:HG13	1.72	0.70
1:A:218:VAL:HG21	1:A:267:VAL:HG13	1.73	0.70
1:A:145:CYS:O	1:A:149[A]:GLU:HG3	1.92	0.68
1:A:198:ASN:C	1:A:198:ASN:HD22	2.01	0.68
1:A:280:ASN:HD21	2:A:1:NAP:H61A	1.41	0.67
1:B:198:ASN:HD22	1:B:198:ASN:C	2.03	0.66
1:B:149:GLU:HG3	1:B:179:LYS:HE3	1.78	0.66
1:A:262:GLN:HE22	1:A:288:LEU:N	1.89	0.63
1:B:107:GLN:HG2	7:B:580:HOH:O	1.98	0.63
1:B:262:GLN:HE22	1:B:288:LEU:N	1.89	0.61
1:B:19:LEU:HD12	1:B:267[B]:VAL:HG23	1.82	0.61
1:A:196:TYR:HB3	1:A:303:MET:HB3	1.83	0.60
1:A:192:GLU:OE2	1:A:194:HIS:HE1	1.86	0.58
1:A:136:LYS:HD2	7:A:442:HOH:O	2.03	0.58
1:B:196:TYR:HB3	1:B:303:MET:HB3	1.84	0.58
1:B:192:GLU:OE2	1:B:194:HIS:HE1	1.88	0.57
1:A:149[A]:GLU:CG	1:A:179:LYS:HE3	2.35	0.56
1:A:194:HIS:HD2	1:A:196:TYR:H	1.53	0.56
1:A:194:HIS:CD2	1:A:196:TYR:HB2	2.42	0.55
1:A:91:HIS:CD2	1:A:93:GLU:H	2.25	0.54
1:A:242:GLY:O	1:A:246:LYS:HG3	2.07	0.53
1:B:194:HIS:CD2	1:B:196:TYR:HB2	2.43	0.53
1:B:262:GLN:NE2	1:B:288:LEU:H	1.90	0.53
1:B:96:ARG:O	1:B:100:GLU:HG3	2.09	0.52
1:B:280:ASN:ND2	2:B:2:NAP:H61A	2.06	0.51
1:A:198:ASN:ND2	1:A:200:MET:H	2.09	0.50
1:B:171:ARG:HH11	1:B:171:ARG:HG3	1.76	0.50
1:A:262:GLN:NE2	1:A:288:LEU:H	1.91	0.50
1:B:36[A]:GLU:HG3	1:B:37:LEU:N	2.26	0.49
1:B:194:HIS:HD2	1:B:196:TYR:H	1.61	0.49
1:A:91:HIS:HD2	1:A:93:GLU:HB2	1.78	0.49
1:B:17:PRO:HB2	1:B:48:HIS:HB2	1.96	0.48
1:A:198:ASN:HD22	1:A:200:MET:H	1.62	0.47
1:A:19:LEU:HD23	1:A:281:MET:HE2	1.95	0.47
1:B:121:ALA:HB2	1:B:142[B]:VAL:CG1	2.45	0.47
1:A:273:LYS:HE2	7:A:625:HOH:O	2.15	0.47
1:B:69:ILE:HA	1:B:74:VAL:O	2.15	0.47
1:A:190:GLN:HA	1:A:214:VAL:O	2.16	0.46
1:A:149[A]:GLU:HG2	1:A:179:LYS:CE	2.44	0.45
1:B:198:ASN:C	1:B:198:ASN:ND2	2.74	0.45
1:A:198:ASN:C	1:A:198:ASN:ND2	2.73	0.44

Continued on next page...

Continued from previous page...

Atom-1	Atom-2	Interatomic distance (Å)	Clash overlap (Å)
1:A:22:GLY:HA3	2:A:1:NAP:H4D	1.98	0.44
1:A:134:HIS:HB3	1:A:136:LYS:HE3	1.99	0.44
1:B:227:TRP:CH2	1:B:310:ILE:HD11	2.52	0.44
1:B:19:LEU:CD1	1:B:267[B]:VAL:HG23	2.46	0.44
1:A:120:MET:HB3	1:A:314:HIS:CD2	2.53	0.44
1:A:213:LEU:C	1:A:213:LEU:HD23	2.43	0.43
1:A:133:GLU:CD	1:A:133:GLU:H	2.26	0.43
1:B:198:ASN:ND2	1:B:200:MET:H	2.17	0.43
1:B:242:GLY:O	1:B:246:LYS:HG3	2.19	0.43
1:A:35:LYS:HE2	1:A:63:GLU:HG2	2.00	0.43
1:B:213:LEU:HD23	1:B:213:LEU:C	2.44	0.43
1:B:19:LEU:HD23	1:B:281:MET:HE2	2.00	0.43
1:A:17:PRO:HB2	1:A:48:HIS:HB2	2.02	0.42
1:A:280:ASN:ND2	2:A:1:NAP:H61A	2.10	0.42
1:B:121:ALA:HB2	1:B:142[B]:VAL:HG11	2.00	0.42
1:B:86:TRP:CG	1:B:87:CYS:N	2.88	0.42
1:B:171:ARG:HG3	1:B:171:ARG:NH1	2.34	0.42
1:B:274:GLU:HG2	1:B:278:LYS:HE3	2.01	0.42
1:B:33:LYS:O	1:B:36[A]:GLU:HG2	2.19	0.42
1:B:28:GLU:H	1:B:28:GLU:CD	2.28	0.41
1:B:261:LEU:HD21	1:B:267[B]:VAL:HG22	2.00	0.41
1:B:118:TYR:C	1:B:120:MET:H	2.28	0.41
1:A:248:TYR:O	1:A:249:ASN:HB2	2.20	0.41
1:A:258:ARG:NE	1:A:262:GLN:HE21	1.91	0.41
1:A:57:THR:O	1:A:61:VAL:HG23	2.20	0.41
1:B:260:GLN:OE1	1:B:260:GLN:HA	2.21	0.41
1:B:183:LYS:HE2	1:B:184:TYR:OH	2.21	0.40
1:A:28:GLU:N	1:A:28:GLU:CD	2.79	0.40
1:B:190:GLN:HA	1:B:214:VAL:O	2.21	0.40
1:A:198:ASN:HD22	1:A:199:GLN:N	2.19	0.40
1:B:57:THR:O	1:B:61:VAL:HG23	2.21	0.40

There are no symmetry-related clashes.

5.3 Torsion angles

5.3.1 Protein backbone

In the following table, the Percentiles column shows the percent Ramachandran outliers of the chain as a percentile score with respect to all X-ray entries followed by that with respect to entries of similar resolution.

The Analysed column shows the number of residues for which the backbone conformation was analysed, and the total number of residues.

Mol	Chain	Analysed	Favoured	Allowed	Outliers	Percentiles	
1	A	318/318 (100%)	313 (98%)	5 (2%)	0	100	100
1	B	319/318 (100%)	312 (98%)	7 (2%)	0	100	100
All	All	637/636 (100%)	625 (98%)	12 (2%)	0	100	100

There are no Ramachandran outliers to report.

5.3.2 Protein sidechains [i](#)

In the following table, the Percentiles column shows the percent sidechain outliers of the chain as a percentile score with respect to all X-ray entries followed by that with respect to entries of similar resolution.

The Analysed column shows the number of residues for which the sidechain conformation was analysed, and the total number of residues.

Mol	Chain	Analysed	Rotameric	Outliers	Percentiles	
1	A	283/281 (101%)	281 (99%)	2 (1%)	76	70
1	B	284/281 (101%)	282 (99%)	2 (1%)	76	70
All	All	567/562 (101%)	563 (99%)	4 (1%)	76	70

All (4) residues with a non-rotameric sidechain are listed below:

Mol	Chain	Res	Type
1	A	198	ASN
1	A	199	GLN
1	B	198	ASN
1	B	199	GLN

Sometimes sidechains can be flipped to improve hydrogen bonding and reduce clashes. All (14) such sidechains are listed below:

Mol	Chain	Res	Type
1	A	47	HIS
1	A	91	HIS
1	A	194	HIS
1	A	198	ASN
1	A	249	ASN
1	A	262	GLN

Continued on next page...

Continued from previous page...

Mol	Chain	Res	Type
1	A	280	ASN
1	B	107	GLN
1	B	167	ASN
1	B	194	HIS
1	B	198	ASN
1	B	199	GLN
1	B	262	GLN
1	B	280	ASN

5.3.3 RNA [i](#)

There are no RNA molecules in this entry.

5.4 Non-standard residues in protein, DNA, RNA chains [i](#)

There are no non-standard protein/DNA/RNA residues in this entry.

5.5 Carbohydrates [i](#)

There are no oligosaccharides in this entry.

5.6 Ligand geometry [i](#)

14 ligands are modelled in this entry.

In the following table, the Counts columns list the number of bonds (or angles) for which Mogul statistics could be retrieved, the number of bonds (or angles) that are observed in the model and the number of bonds (or angles) that are defined in the Chemical Component Dictionary. The Link column lists molecule types, if any, to which the group is linked. The Z score for a bond length (or angle) is the number of standard deviations the observed value is removed from the expected value. A bond length (or angle) with $|Z| > 2$ is considered an outlier worth inspection. RMSZ is the root-mean-square of all Z scores of the bond lengths (or angles).

Mol	Type	Chain	Res	Link	Bond lengths			Bond angles		
					Counts	RMSZ	$\# Z > 2$	Counts	RMSZ	$\# Z > 2$
6	TRS	A	328	-	7,7,7	0.56	0	9,9,9	0.39	0
2	NAP	B	2	-	50,52,52	1.69	8 (16%)	71,80,80	0.88	0
4	BME	A	5	-	3,3,3	0.38	0	2,2,2	0.33	0
4	BME	A	325	-	3,3,3	0.40	0	2,2,2	0.29	0
5	EDO	B	327	-	3,3,3	2.34	1 (33%)	2,2,2	0.38	0

Mol	Type	Chain	Res	Link	Bond lengths			Bond angles		
					Counts	RMSZ	# Z > 2	Counts	RMSZ	# Z > 2
3	FFA	A	3	-	24,24,24	1.61	7 (29%)	39,39,39	1.30	4 (10%)
3	FFA	B	4	-	24,24,24	1.57	5 (20%)	39,39,39	1.31	4 (10%)
4	BME	B	325	-	3,3,3	0.40	0	2,2,2	0.32	0
2	NAP	A	1	-	50,52,52	1.68	8 (16%)	71,80,80	0.87	1 (1%)
4	BME	B	326	-	3,3,3	0.39	0	2,2,2	0.31	0
4	BME	B	324	-	3,3,3	0.41	0	2,2,2	0.28	0
5	EDO	A	327	-	3,3,3	2.30	1 (33%)	2,2,2	0.35	0
4	BME	A	324	-	3,3,3	0.37	0	2,2,2	0.30	0
5	EDO	A	326	-	3,3,3	2.35	1 (33%)	2,2,2	0.40	0

In the following table, the Chirals column lists the number of chiral outliers, the number of chiral centers analysed, the number of these observed in the model and the number defined in the Chemical Component Dictionary. Similar counts are reported in the Torsion and Rings columns. '-' means no outliers of that kind were identified.

Mol	Type	Chain	Res	Link	Chirals	Torsions	Rings
6	TRS	A	328	-	-	0/9/9/9	-
2	NAP	B	2	-	-	1/35/67/67	0/5/5/5
4	BME	A	5	-	-	0/1/1/1	-
4	BME	A	325	-	-	0/1/1/1	-
5	EDO	B	327	-	-	1/1/1/1	-
3	FFA	A	3	-	-	-	0/4/4/4
4	BME	B	325	-	-	0/1/1/1	-
4	BME	B	326	-	-	0/1/1/1	-
2	NAP	A	1	-	-	1/35/67/67	0/5/5/5
5	EDO	A	327	-	-	0/1/1/1	-
4	BME	B	324	-	-	0/1/1/1	-
3	FFA	B	4	-	-	-	0/4/4/4
4	BME	A	324	-	-	0/1/1/1	-
5	EDO	A	326	-	-	1/1/1/1	-

All (31) bond length outliers are listed below:

Mol	Chain	Res	Type	Atoms	Z	Observed(Å)	Ideal(Å)
2	A	1	NAP	C2N-N1N	4.78	1.40	1.35
2	B	2	NAP	C5A-C6A	4.77	1.54	1.41
2	A	1	NAP	C5A-C6A	4.69	1.54	1.41
2	B	2	NAP	C2N-N1N	4.64	1.40	1.35
2	A	1	NAP	C4N-C3N	4.49	1.46	1.39
2	B	2	NAP	C4N-C3N	4.47	1.46	1.39
2	A	1	NAP	C6N-N1N	4.26	1.45	1.35

Continued on next page...

Continued from previous page...

Mol	Chain	Res	Type	Atoms	Z	Observed(Å)	Ideal(Å)
2	B	2	NAP	C6N-N1N	4.24	1.45	1.35
5	A	326	EDO	O2-C2	-4.01	1.21	1.42
5	B	327	EDO	O2-C2	-3.99	1.21	1.42
5	A	327	EDO	O2-C2	-3.92	1.22	1.42
2	B	2	NAP	C4A-N3A	3.34	1.40	1.34
2	A	1	NAP	C4A-N3A	3.13	1.40	1.34
3	B	4	FFA	C11-C7	3.11	1.58	1.53
3	A	3	FFA	C11-C7	3.00	1.58	1.53
2	B	2	NAP	C2A-N3A	2.74	1.38	1.33
2	A	1	NAP	C2A-N3A	2.66	1.38	1.33
3	A	3	FFA	C1-C6	2.63	1.59	1.54
3	B	4	FFA	C1-C6	2.60	1.59	1.54
2	B	2	NAP	C5N-C4N	2.58	1.43	1.38
3	A	3	FFA	C6-C7	2.53	1.60	1.56
2	A	1	NAP	C2A-N1A	2.49	1.38	1.33
2	A	1	NAP	C5N-C4N	2.42	1.43	1.38
2	B	2	NAP	C2A-N1A	2.39	1.38	1.33
3	A	3	FFA	C8-C7	2.32	1.58	1.53
3	B	4	FFA	C8-C7	2.31	1.57	1.53
3	B	4	FFA	C6-C7	2.23	1.59	1.56
3	A	3	FFA	C18-C13	2.11	1.57	1.54
3	A	3	FFA	C10-C5	2.04	1.53	1.50
3	B	4	FFA	C10-C5	2.03	1.53	1.50
3	A	3	FFA	C4-C3	2.00	1.49	1.45

All (9) bond angle outliers are listed below:

Mol	Chain	Res	Type	Atoms	Z	Observed(°)	Ideal(°)
3	B	4	FFA	C14-C13-C17	3.45	102.77	99.25
3	A	3	FFA	C14-C13-C17	3.44	102.75	99.25
3	B	4	FFA	C18-C13-C17	-2.67	105.50	109.58
3	B	4	FFA	C2-C1-C6	2.66	118.04	113.42
3	A	3	FFA	C2-C1-C6	2.60	117.94	113.42
3	B	4	FFA	C18-C13-C14	2.58	116.36	111.68
3	A	3	FFA	C18-C13-C14	2.56	116.33	111.68
3	A	3	FFA	C18-C13-C17	-2.50	105.75	109.58
2	A	1	NAP	C6N-N1N-C1D	2.02	123.70	119.73

There are no chirality outliers.

All (4) torsion outliers are listed below:

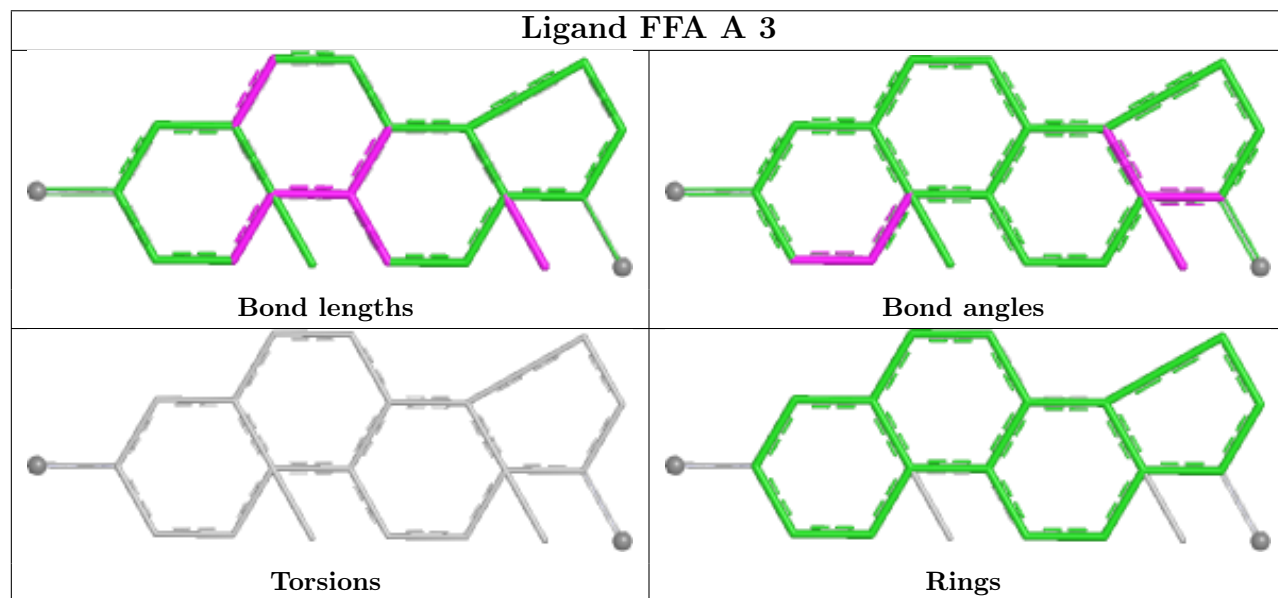
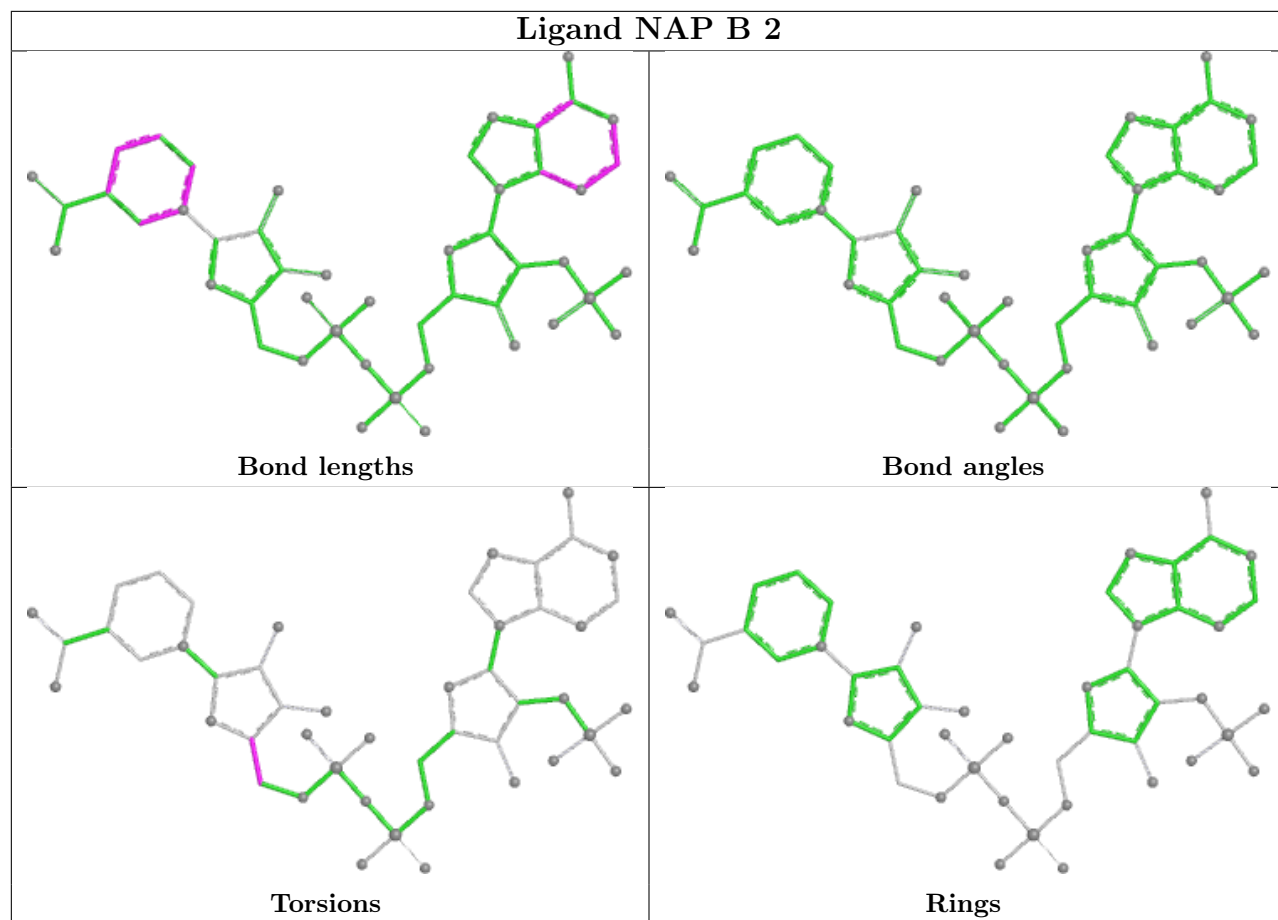
Mol	Chain	Res	Type	Atoms
5	A	326	EDO	O1-C1-C2-O2
5	B	327	EDO	O1-C1-C2-O2
2	A	1	NAP	C3D-C4D-C5D-O5D
2	B	2	NAP	C3D-C4D-C5D-O5D

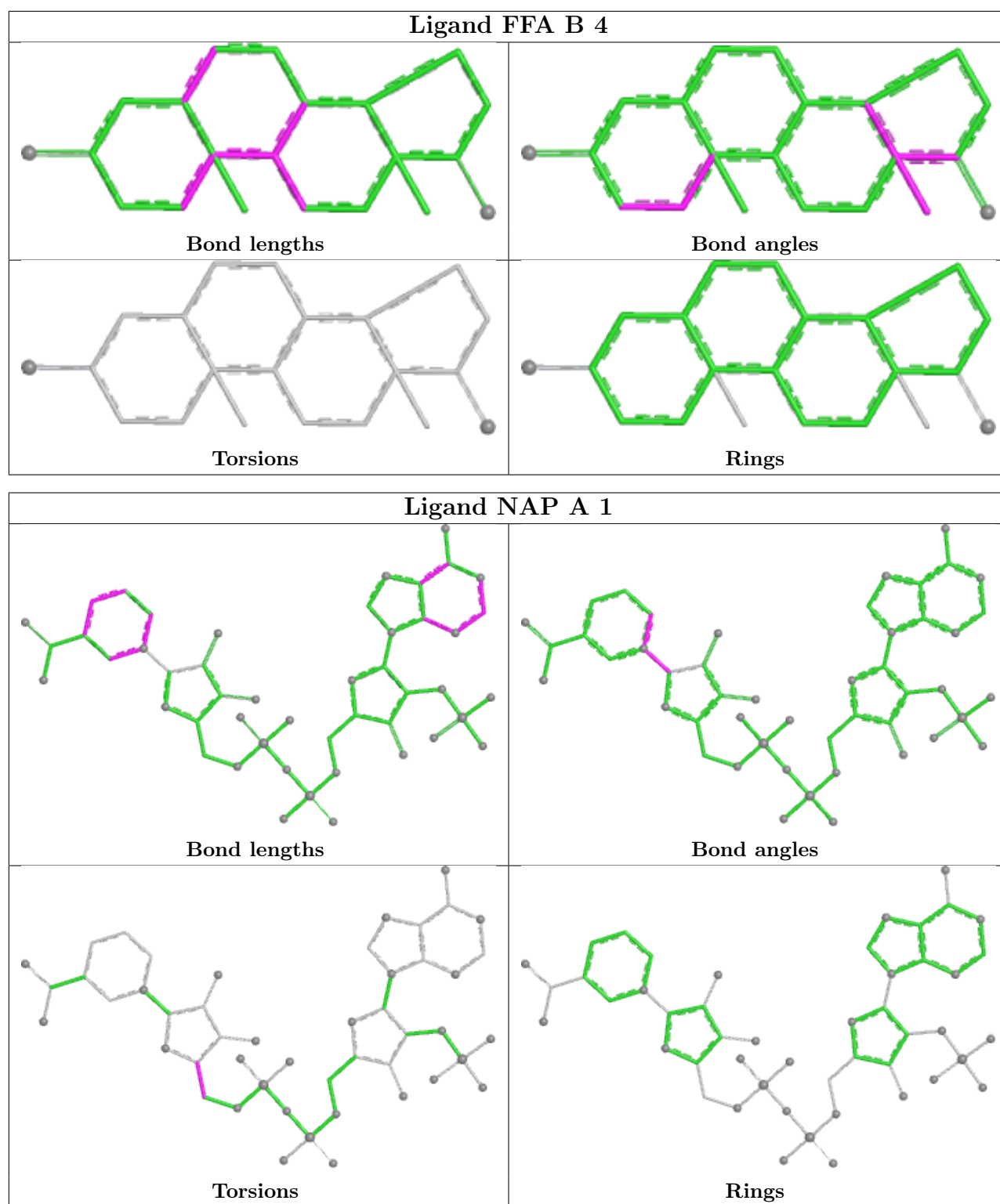
There are no ring outliers.

7 monomers are involved in 10 short contacts:

Mol	Chain	Res	Type	Clashes	Symm-Clashes
2	B	2	NAP	2	0
4	A	325	BME	1	0
4	B	325	BME	1	0
2	A	1	NAP	3	0
4	B	326	BME	1	0
4	B	324	BME	1	0
5	A	326	EDO	1	0

The following is a two-dimensional graphical depiction of Mogul quality analysis of bond lengths, bond angles, torsion angles, and ring geometry for all instances of the Ligand of Interest. In addition, ligands with molecular weight > 250 and outliers as shown on the validation Tables will also be included. For torsion angles, if less than 5% of the Mogul distribution of torsion angles is within 10 degrees of the torsion angle in question, then that torsion angle is considered an outlier. Any bond that is central to one or more torsion angles identified as an outlier by Mogul will be highlighted in the graph. For rings, the root-mean-square deviation (RMSD) between the ring in question and similar rings identified by Mogul is calculated over all ring torsion angles. If the average RMSD is greater than 60 degrees and the minimal RMSD between the ring in question and any Mogul-identified rings is also greater than 60 degrees, then that ring is considered an outlier. The outliers are highlighted in purple. The color gray indicates Mogul did not find sufficient equivalents in the CSD to analyse the geometry.





5.7 Other polymers [\(i\)](#)

There are no such residues in this entry.

5.8 Polymer linkage issues

There are no chain breaks in this entry.

6 Fit of model and data [i](#)

6.1 Protein, DNA and RNA chains [i](#)

In the following table, the column labelled '#RSRZ > 2' contains the number (and percentage) of RSRZ outliers, followed by percent RSRZ outliers for the chain as percentile scores relative to all X-ray entries and entries of similar resolution. The OWAB column contains the minimum, median, 95th percentile and maximum values of the occupancy-weighted average B-factor per residue. The column labelled 'Q < 0.9' lists the number of (and percentage) of residues with an average occupancy less than 0.9.

Mol	Chain	Analysed	<RSRZ>	#RSRZ>2	OWAB(Å ²)	Q<0.9
1	A	318/318 (100%)	-0.59	0 100 100	8, 15, 23, 28	9 (2%)
1	B	318/318 (100%)	-0.50	0 100 100	6, 17, 26, 32	15 (4%)
All	All	636/636 (100%)	-0.55	0 100 100	6, 16, 25, 32	24 (3%)

There are no RSRZ outliers to report.

6.2 Non-standard residues in protein, DNA, RNA chains [i](#)

There are no non-standard protein/DNA/RNA residues in this entry.

6.3 Carbohydrates [i](#)

There are no oligosaccharides in this entry.

6.4 Ligands [i](#)

In the following table, the Atoms column lists the number of modelled atoms in the group and the number defined in the chemical component dictionary. The B-factors column lists the minimum, median, 95th percentile and maximum values of B factors of atoms in the group. The column labelled 'Q < 0.9' lists the number of atoms with occupancy less than 0.9.

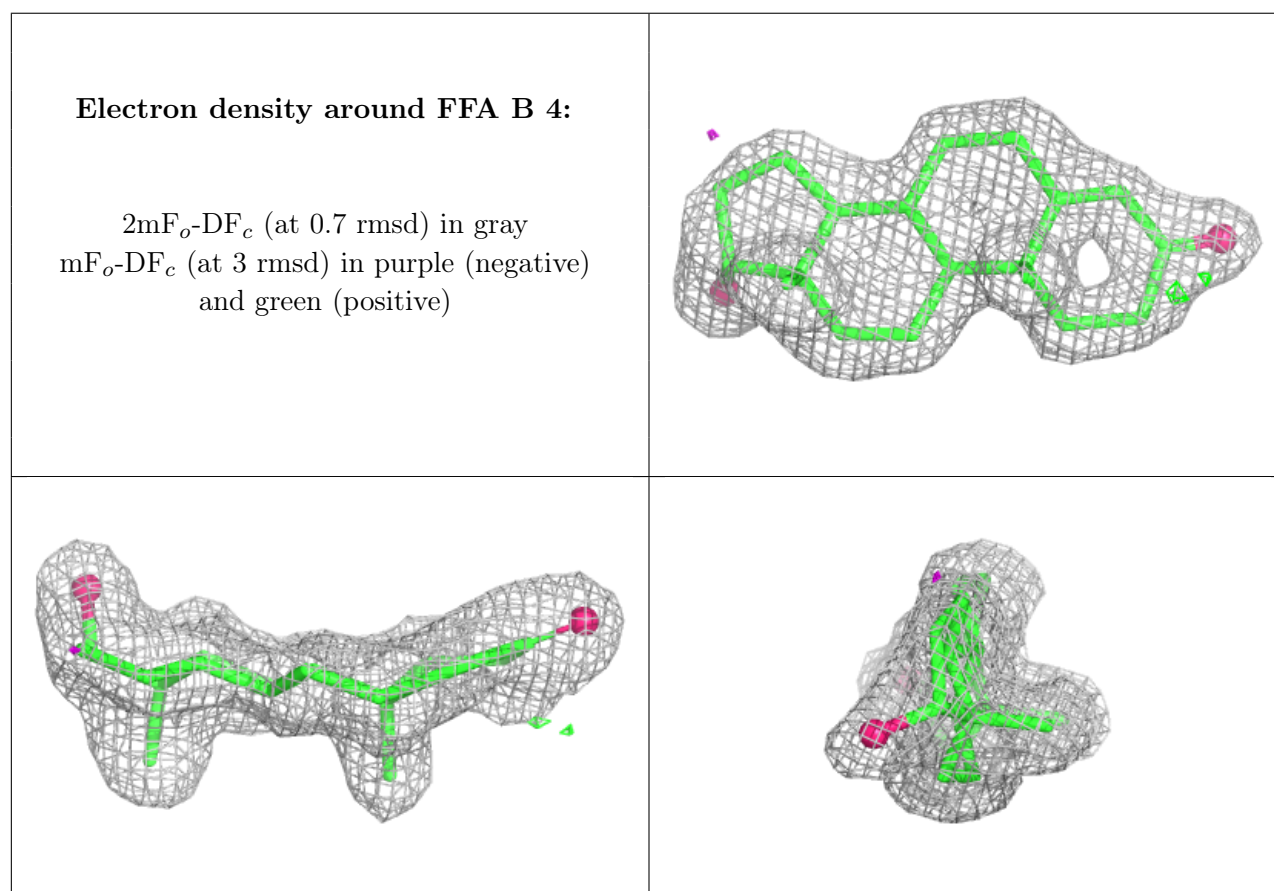
Mol	Type	Chain	Res	Atoms	RSCC	RSR	B-factors(Å ²)	Q<0.9
4	BME	A	324	4/4	0.70	0.25	69,72,72,73	0
4	BME	B	325	4/4	0.78	0.17	58,59,59,59	0
4	BME	A	325	4/4	0.79	0.23	86,87,87,87	0
4	BME	B	326	4/4	0.84	0.17	79,80,80,80	0
5	EDO	B	327	4/4	0.84	0.13	36,40,41,43	0
6	TRS	A	328	8/8	0.88	0.12	27,30,31,32	0
3	FFA	B	4	21/21	0.89	0.09	22,25,30,32	0

Continued on next page...

Continued from previous page...

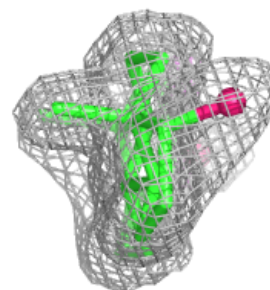
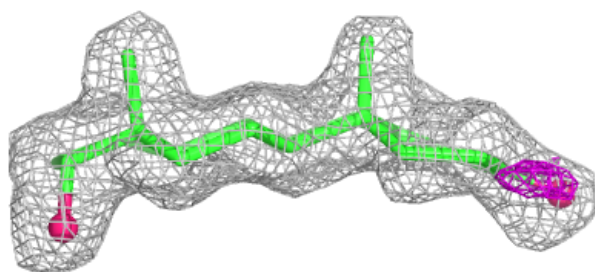
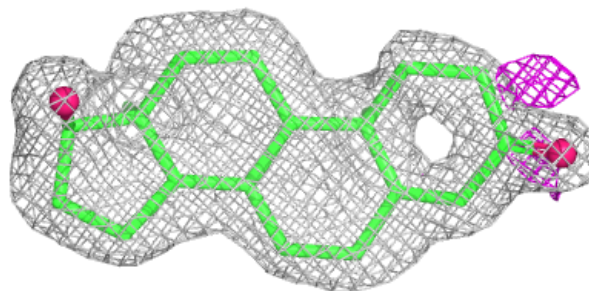
Mol	Type	Chain	Res	Atoms	RSCC	RSR	B-factors(\AA^2)	Q<0.9
4	BME	A	5	4/4	0.90	0.14	36,39,41,46	0
3	FFA	A	3	21/21	0.91	0.09	20,23,29,32	0
4	BME	B	324	4/4	0.92	0.11	50,52,53,54	0
5	EDO	A	326	4/4	0.93	0.08	20,26,26,29	0
5	EDO	A	327	4/4	0.94	0.08	29,30,32,32	0
2	NAP	A	1	48/48	0.99	0.04	7,11,14,15	0
2	NAP	B	2	48/48	0.99	0.04	10,13,15,16	0

The following is a graphical depiction of the model fit to experimental electron density of all instances of the Ligand of Interest. In addition, ligands with molecular weight > 250 and outliers as shown on the geometry validation Tables will also be included. Each fit is shown from different orientation to approximate a three-dimensional view.

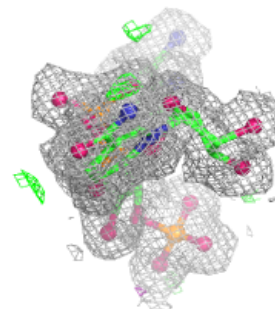
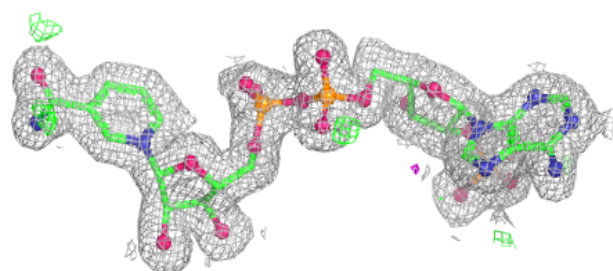
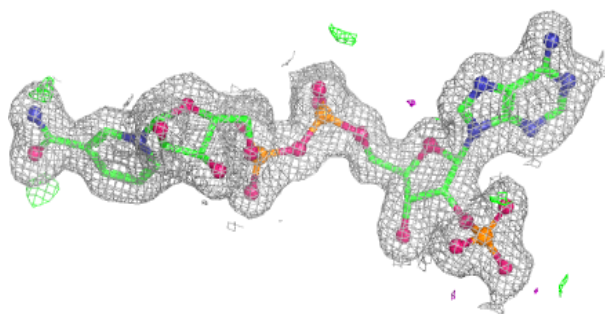


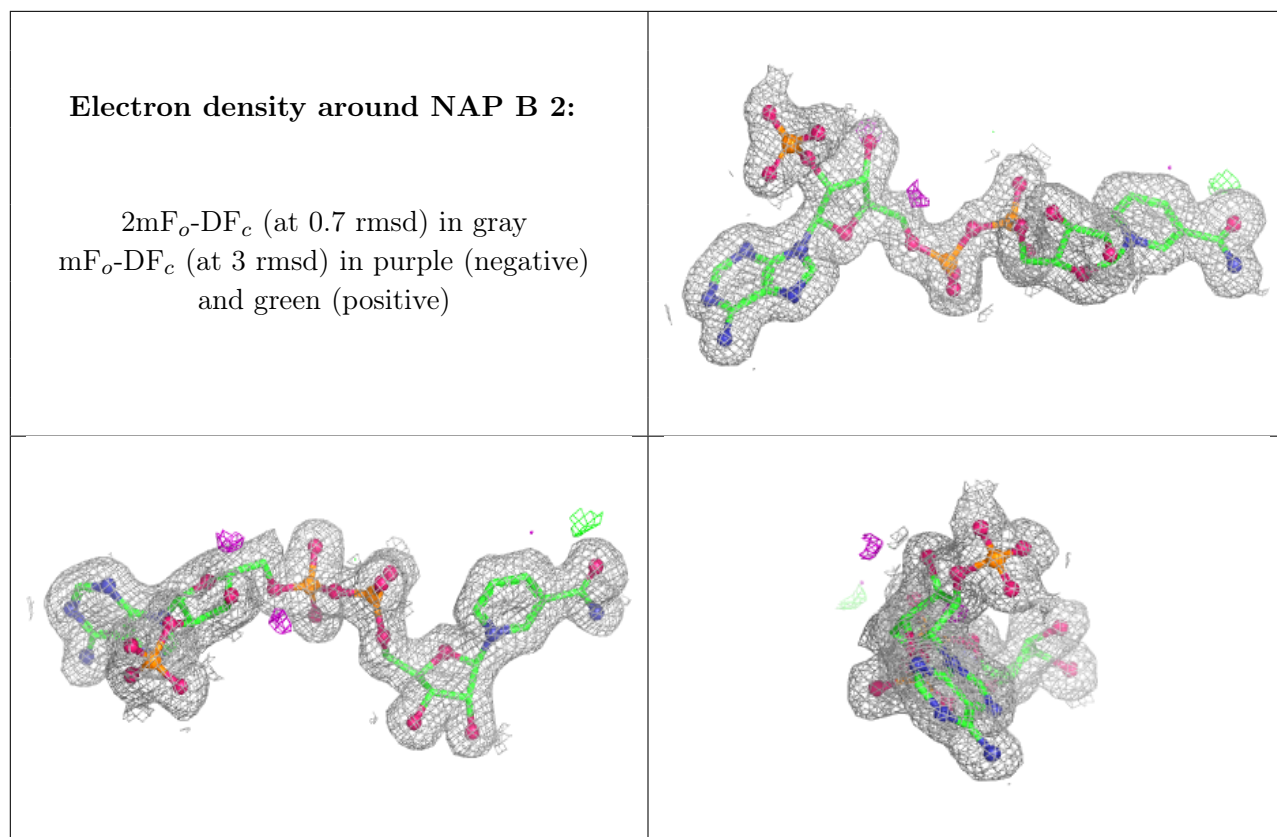
Electron density around FFA A 3:

$2mF_o-DF_c$ (at 0.7 rmsd) in gray
 mF_o-DF_c (at 3 rmsd) in purple (negative)
and green (positive)

**Electron density around NAP A 1:**

$2mF_o-DF_c$ (at 0.7 rmsd) in gray
 mF_o-DF_c (at 3 rmsd) in purple (negative)
and green (positive)





6.5 Other polymers [i](#)

There are no such residues in this entry.