



Full wwPDB EM Validation Report ⓘ

Mar 9, 2026 – 03:09 AM UTC

PDB ID : 6IP2 / pdb_00006ip2
EMDB ID : EMD-9698
Title : NSF-D1D2 part in the whole 20S complex
Authors : Huang, X.; Sun, S.; Wang, X.; Fan, F.; Zhou, Q.; Sui, S.F.
Deposited on : 2018-11-01
Resolution : 3.70 Å (reported)

This is a Full wwPDB EM Validation Report for a publicly released PDB entry.

We welcome your comments at validation@mail.wwpdb.org

A user guide is available at

<https://www.wwpdb.org/validation/2017/EMValidationReportHelp>

with specific help available everywhere you see the ⓘ symbol.

The types of validation reports are described at

<http://www.wwpdb.org/validation/2017/FAQs#types>.

The following versions of software and data (see [references ⓘ](#)) were used in the production of this report:

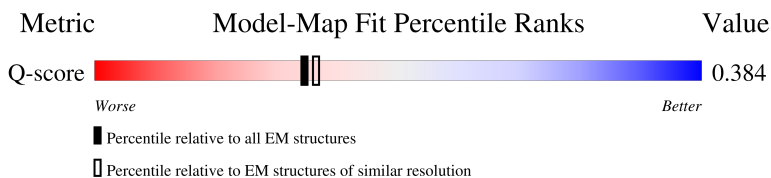
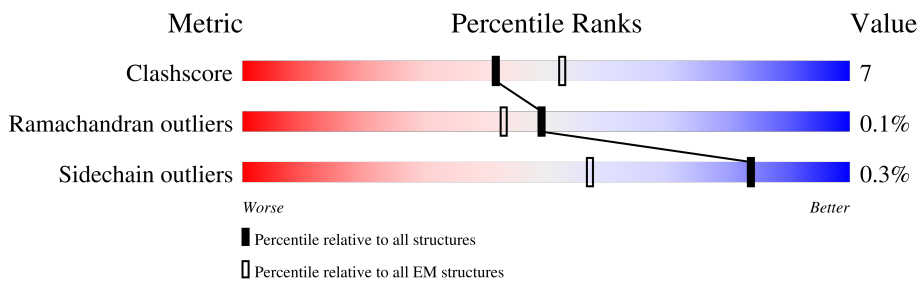
EMDB validation analysis : 0.0.1.dev132
Mogul : 2022.3.0, CSD as543be (2022)
MolProbity : 4-5-2 with Phenix2.0
Buster-report : wwPDB partial adaption of 1.1.7 (2018)
Percentile statistics : 20250101.v01 (using entries in the PDB archive January 1st 2025)
EM percentile statistics : 202505.v01 (Using data in the EMDB archive up until May 2025)
MapQ : 1.9.13
Ideal geometry (proteins) : Engh & Huber (2001)
Ideal geometry (DNA, RNA) : Parkinson et al. (1996)
Validation Pipeline (wwPDB-VP) : 2.49

1 Overall quality at a glance

The following experimental techniques were used to determine the structure:
ELECTRON MICROSCOPY

The reported resolution of this entry is 3.70 Å.

Percentile scores (ranging between 0-100) for global validation metrics of the entry are shown in the following graphic. The table shows the number of entries on which the scores are based.



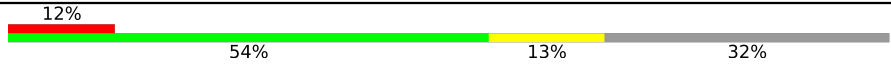

Metric	Whole archive (#Entries)	EM structures (#Entries)	Similar EM resolution (#Entries, resolution range(Å))
Clashscore	229148	23984	-
Ramachandran outliers	224038	23583	-
Sidechain outliers	223484	23102	-
Q-score	-	25397	11569 (3.20 - 4.20)

The table below summarises the geometric issues observed across the polymeric chains and their fit to the map. The red, orange, yellow and green segments of the bar indicate the fraction of residues that contain outliers for ≥ 3 , 2, 1 and 0 types of geometric quality criteria respectively. A grey segment represents the fraction of residues that are not modelled. The numeric value for each fraction is indicated below the corresponding segment, with a dot representing fractions $\leq 5\%$. The upper red bar (where present) indicates the fraction of residues that have poor fit to the EM map (all-atom inclusion $< 40\%$). The numeric value is given above the bar.

Mol	Chain	Length	Quality of chain
1	A	769	<p>25% (red), 53% (green), 14% (yellow), 32% (grey)</p>
1	B	769	<p>9% (red), 54% (green), 13% (yellow), 32% (grey)</p>
1	C	769	<p>6% (red), 55% (green), 12% (yellow), 32% (grey)</p>
1	D	769	<p>6% (red), 54% (green), 13% (yellow), 32% (grey)</p>

Continued on next page...

Continued from previous page...

Mol	Chain	Length	Quality of chain
1	E	769	
1	F	769	

2 Entry composition i

There are 2 unique types of molecules in this entry. The entry contains 24660 atoms, of which 0 are hydrogens and 0 are deuteriums.

In the tables below, the AltConf column contains the number of residues with at least one atom in alternate conformation and the Trace column contains the number of residues modelled with at most 2 atoms.

- Molecule 1 is a protein called Vesicle-fusing ATPase.

Mol	Chain	Residues	Atoms					AltConf	Trace
			Total	C	N	O	S		
1	B	520	4048	2561	707	757	23	0	0
1	C	520	4048	2561	707	757	23	0	0
1	D	520	4048	2561	707	757	23	0	0
1	E	520	4048	2561	707	757	23	0	0
1	F	520	4048	2561	707	757	23	0	0
1	A	520	4048	2561	707	757	23	0	0

There are 156 discrepancies between the modelled and reference sequences:

Chain	Residue	Modelled	Actual	Comment	Reference
B	-24	MET	-	initiating methionine	UNP P18708
B	-23	ARG	-	expression tag	UNP P18708
B	-22	GLY	-	expression tag	UNP P18708
B	-21	SER	-	expression tag	UNP P18708
B	-20	HIS	-	expression tag	UNP P18708
B	-19	HIS	-	expression tag	UNP P18708
B	-18	HIS	-	expression tag	UNP P18708
B	-17	HIS	-	expression tag	UNP P18708
B	-16	HIS	-	expression tag	UNP P18708
B	-15	HIS	-	expression tag	UNP P18708
B	-14	THR	-	expression tag	UNP P18708
B	-13	ASP	-	expression tag	UNP P18708
B	-12	PRO	-	expression tag	UNP P18708
B	-11	LEU	-	expression tag	UNP P18708
B	-10	ASP	-	expression tag	UNP P18708
B	-9	VAL	-	expression tag	UNP P18708
B	-8	ASP	-	expression tag	UNP P18708
B	-7	SER	-	expression tag	UNP P18708

Continued on next page...

Continued from previous page...

Chain	Residue	Modelled	Actual	Comment	Reference
B	-6	GLU	-	expression tag	UNP P18708
B	-5	PRO	-	expression tag	UNP P18708
B	-4	ASP	-	expression tag	UNP P18708
B	-3	VAL	-	expression tag	UNP P18708
B	-2	SER	-	expression tag	UNP P18708
B	-1	ALA	-	expression tag	UNP P18708
B	0	LYS	-	expression tag	UNP P18708
B	155	VAL	MET	conflict	UNP P18708
C	-24	MET	-	initiating methionine	UNP P18708
C	-23	ARG	-	expression tag	UNP P18708
C	-22	GLY	-	expression tag	UNP P18708
C	-21	SER	-	expression tag	UNP P18708
C	-20	HIS	-	expression tag	UNP P18708
C	-19	HIS	-	expression tag	UNP P18708
C	-18	HIS	-	expression tag	UNP P18708
C	-17	HIS	-	expression tag	UNP P18708
C	-16	HIS	-	expression tag	UNP P18708
C	-15	HIS	-	expression tag	UNP P18708
C	-14	THR	-	expression tag	UNP P18708
C	-13	ASP	-	expression tag	UNP P18708
C	-12	PRO	-	expression tag	UNP P18708
C	-11	LEU	-	expression tag	UNP P18708
C	-10	ASP	-	expression tag	UNP P18708
C	-9	VAL	-	expression tag	UNP P18708
C	-8	ASP	-	expression tag	UNP P18708
C	-7	SER	-	expression tag	UNP P18708
C	-6	GLU	-	expression tag	UNP P18708
C	-5	PRO	-	expression tag	UNP P18708
C	-4	ASP	-	expression tag	UNP P18708
C	-3	VAL	-	expression tag	UNP P18708
C	-2	SER	-	expression tag	UNP P18708
C	-1	ALA	-	expression tag	UNP P18708
C	0	LYS	-	expression tag	UNP P18708
C	155	VAL	MET	conflict	UNP P18708
D	-24	MET	-	initiating methionine	UNP P18708
D	-23	ARG	-	expression tag	UNP P18708
D	-22	GLY	-	expression tag	UNP P18708
D	-21	SER	-	expression tag	UNP P18708
D	-20	HIS	-	expression tag	UNP P18708
D	-19	HIS	-	expression tag	UNP P18708
D	-18	HIS	-	expression tag	UNP P18708
D	-17	HIS	-	expression tag	UNP P18708

Continued on next page...

Continued from previous page...

Chain	Residue	Modelled	Actual	Comment	Reference
D	-16	HIS	-	expression tag	UNP P18708
D	-15	HIS	-	expression tag	UNP P18708
D	-14	THR	-	expression tag	UNP P18708
D	-13	ASP	-	expression tag	UNP P18708
D	-12	PRO	-	expression tag	UNP P18708
D	-11	LEU	-	expression tag	UNP P18708
D	-10	ASP	-	expression tag	UNP P18708
D	-9	VAL	-	expression tag	UNP P18708
D	-8	ASP	-	expression tag	UNP P18708
D	-7	SER	-	expression tag	UNP P18708
D	-6	GLU	-	expression tag	UNP P18708
D	-5	PRO	-	expression tag	UNP P18708
D	-4	ASP	-	expression tag	UNP P18708
D	-3	VAL	-	expression tag	UNP P18708
D	-2	SER	-	expression tag	UNP P18708
D	-1	ALA	-	expression tag	UNP P18708
D	0	LYS	-	expression tag	UNP P18708
D	155	VAL	MET	conflict	UNP P18708
E	-24	MET	-	initiating methionine	UNP P18708
E	-23	ARG	-	expression tag	UNP P18708
E	-22	GLY	-	expression tag	UNP P18708
E	-21	SER	-	expression tag	UNP P18708
E	-20	HIS	-	expression tag	UNP P18708
E	-19	HIS	-	expression tag	UNP P18708
E	-18	HIS	-	expression tag	UNP P18708
E	-17	HIS	-	expression tag	UNP P18708
E	-16	HIS	-	expression tag	UNP P18708
E	-15	HIS	-	expression tag	UNP P18708
E	-14	THR	-	expression tag	UNP P18708
E	-13	ASP	-	expression tag	UNP P18708
E	-12	PRO	-	expression tag	UNP P18708
E	-11	LEU	-	expression tag	UNP P18708
E	-10	ASP	-	expression tag	UNP P18708
E	-9	VAL	-	expression tag	UNP P18708
E	-8	ASP	-	expression tag	UNP P18708
E	-7	SER	-	expression tag	UNP P18708
E	-6	GLU	-	expression tag	UNP P18708
E	-5	PRO	-	expression tag	UNP P18708
E	-4	ASP	-	expression tag	UNP P18708
E	-3	VAL	-	expression tag	UNP P18708
E	-2	SER	-	expression tag	UNP P18708
E	-1	ALA	-	expression tag	UNP P18708

Continued on next page...

Continued from previous page...

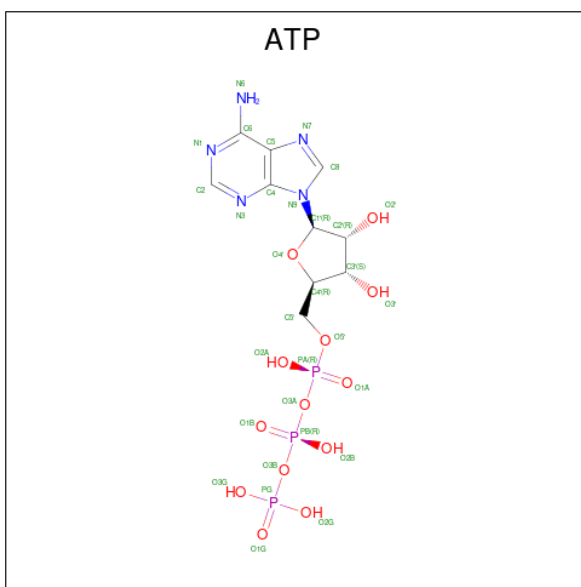
Chain	Residue	Modelled	Actual	Comment	Reference
E	0	LYS	-	expression tag	UNP P18708
E	155	VAL	MET	conflict	UNP P18708
F	-24	MET	-	initiating methionine	UNP P18708
F	-23	ARG	-	expression tag	UNP P18708
F	-22	GLY	-	expression tag	UNP P18708
F	-21	SER	-	expression tag	UNP P18708
F	-20	HIS	-	expression tag	UNP P18708
F	-19	HIS	-	expression tag	UNP P18708
F	-18	HIS	-	expression tag	UNP P18708
F	-17	HIS	-	expression tag	UNP P18708
F	-16	HIS	-	expression tag	UNP P18708
F	-15	HIS	-	expression tag	UNP P18708
F	-14	THR	-	expression tag	UNP P18708
F	-13	ASP	-	expression tag	UNP P18708
F	-12	PRO	-	expression tag	UNP P18708
F	-11	LEU	-	expression tag	UNP P18708
F	-10	ASP	-	expression tag	UNP P18708
F	-9	VAL	-	expression tag	UNP P18708
F	-8	ASP	-	expression tag	UNP P18708
F	-7	SER	-	expression tag	UNP P18708
F	-6	GLU	-	expression tag	UNP P18708
F	-5	PRO	-	expression tag	UNP P18708
F	-4	ASP	-	expression tag	UNP P18708
F	-3	VAL	-	expression tag	UNP P18708
F	-2	SER	-	expression tag	UNP P18708
F	-1	ALA	-	expression tag	UNP P18708
F	0	LYS	-	expression tag	UNP P18708
F	155	VAL	MET	conflict	UNP P18708
A	-24	MET	-	initiating methionine	UNP P18708
A	-23	ARG	-	expression tag	UNP P18708
A	-22	GLY	-	expression tag	UNP P18708
A	-21	SER	-	expression tag	UNP P18708
A	-20	HIS	-	expression tag	UNP P18708
A	-19	HIS	-	expression tag	UNP P18708
A	-18	HIS	-	expression tag	UNP P18708
A	-17	HIS	-	expression tag	UNP P18708
A	-16	HIS	-	expression tag	UNP P18708
A	-15	HIS	-	expression tag	UNP P18708
A	-14	THR	-	expression tag	UNP P18708
A	-13	ASP	-	expression tag	UNP P18708
A	-12	PRO	-	expression tag	UNP P18708
A	-11	LEU	-	expression tag	UNP P18708

Continued on next page...

Continued from previous page...

Chain	Residue	Modelled	Actual	Comment	Reference
A	-10	ASP	-	expression tag	UNP P18708
A	-9	VAL	-	expression tag	UNP P18708
A	-8	ASP	-	expression tag	UNP P18708
A	-7	SER	-	expression tag	UNP P18708
A	-6	GLU	-	expression tag	UNP P18708
A	-5	PRO	-	expression tag	UNP P18708
A	-4	ASP	-	expression tag	UNP P18708
A	-3	VAL	-	expression tag	UNP P18708
A	-2	SER	-	expression tag	UNP P18708
A	-1	ALA	-	expression tag	UNP P18708
A	0	LYS	-	expression tag	UNP P18708
A	155	VAL	MET	conflict	UNP P18708

- Molecule 2 is ADENOSINE-5'-TRIPHOSPHATE (CCD ID: ATP) (formula: $C_{10}H_{16}N_5O_{13}P_3$).



Mol	Chain	Residues	Atoms					AltConf
			Total	C	N	O	P	
2	B	1	Total	C	N	O	P	0
			31	10	5	13	3	
2	B	1	Total	C	N	O	P	0
			31	10	5	13	3	
2	C	1	Total	C	N	O	P	0
			31	10	5	13	3	
2	C	1	Total	C	N	O	P	0
			31	10	5	13	3	
2	D	1	Total	C	N	O	P	0
			31	10	5	13	3	

Continued on next page...

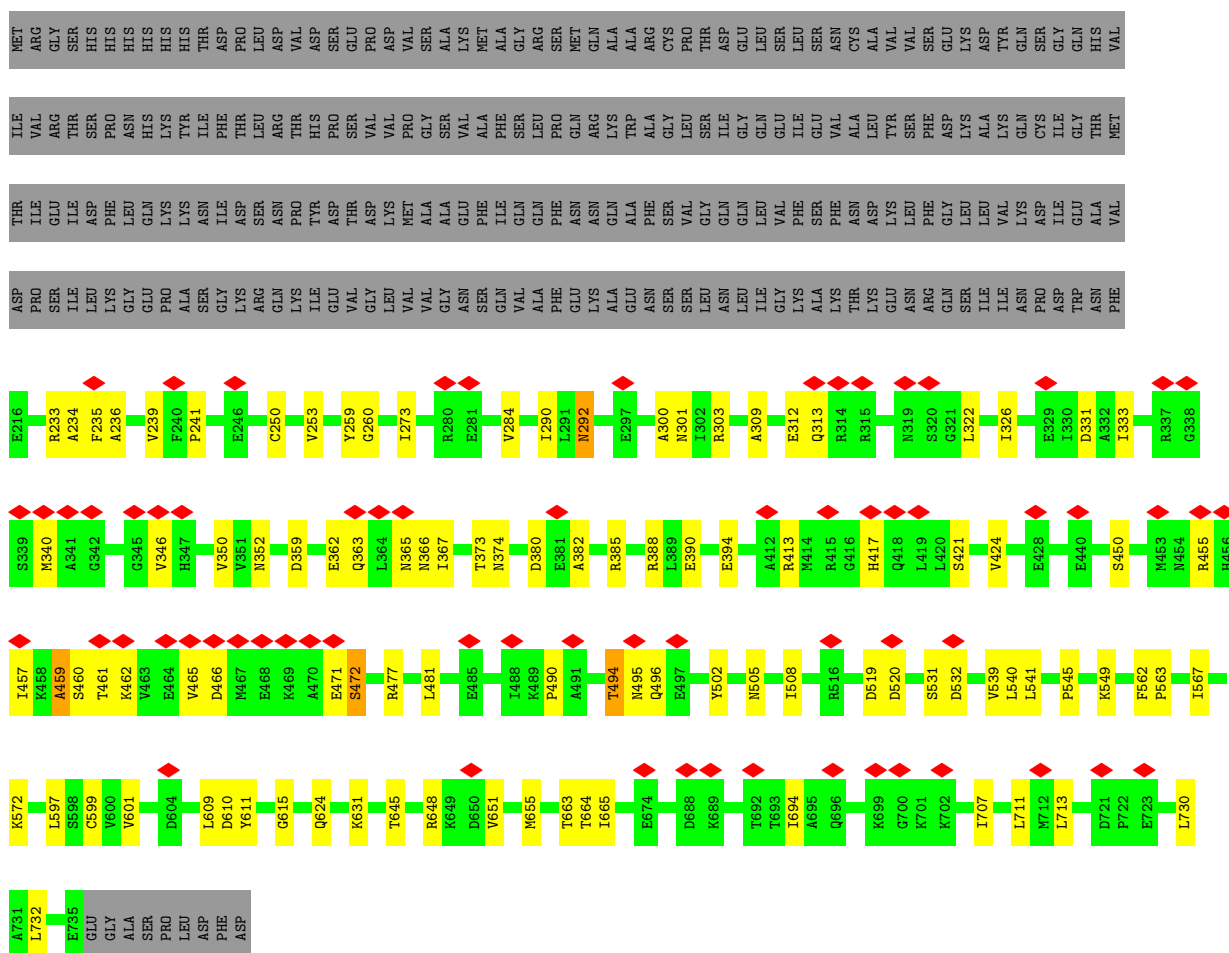
Continued from previous page...

Mol	Chain	Residues	Atoms					AltConf
			Total	C	N	O	P	
2	D	1	Total 31	C 10	N 5	O 13	P 3	0
2	E	1	Total 31	C 10	N 5	O 13	P 3	0
2	E	1	Total 31	C 10	N 5	O 13	P 3	0
2	F	1	Total 31	C 10	N 5	O 13	P 3	0
2	F	1	Total 31	C 10	N 5	O 13	P 3	0
2	A	1	Total 31	C 10	N 5	O 13	P 3	0
2	A	1	Total 31	C 10	N 5	O 13	P 3	0

3 Residue-property plots [i](#)

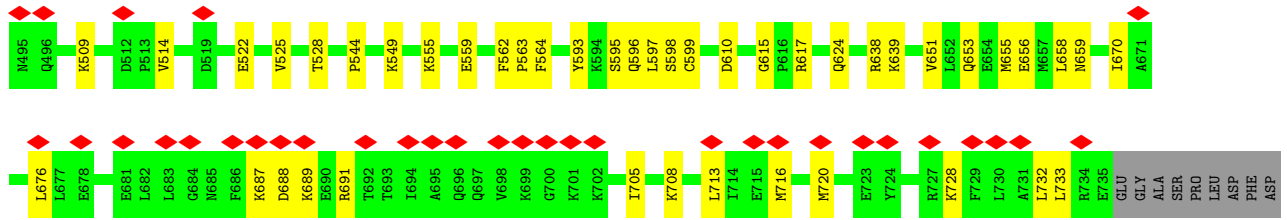
These plots are drawn for all protein, RNA, DNA and oligosaccharide chains in the entry. The first graphic for a chain summarises the proportions of the various outlier classes displayed in the second graphic. The second graphic shows the sequence view annotated by issues in geometry and atom inclusion in map density. Residues are color-coded according to the number of geometric quality criteria for which they contain at least one outlier: green = 0, yellow = 1, orange = 2 and red = 3 or more. A red diamond above a residue indicates a poor fit to the EM map for this residue (all-atom inclusion < 40%). Stretches of 2 or more consecutive residues without any outlier are shown as a green connector. Residues present in the sample, but not in the model, are shown in grey.

• Molecule 1: Vesicle-fusing ATPase



• Molecule 1: Vesicle-fusing ATPase





4 Experimental information

Property	Value	Source
EM reconstruction method	SINGLE PARTICLE	Depositor
Imposed symmetry	POINT, Not provided	
Number of particles used	163942	Depositor
Resolution determination method	FSC 0.143 CUT-OFF	Depositor
CTF correction method	PHASE FLIPPING AND AMPLITUDE CORRECTION	Depositor
Microscope	FEI TITAN KRIOS	Depositor
Voltage (kV)	300	Depositor
Electron dose ($e^-/\text{\AA}^2$)	50	Depositor
Minimum defocus (nm)	Not provided	
Maximum defocus (nm)	Not provided	
Magnification	Not provided	
Image detector	GATAN K2 SUMMIT (4k x 4k)	Depositor
Maximum map value	0.369	Depositor
Minimum map value	-0.233	Depositor
Average map value	0.001	Depositor
Map value standard deviation	0.020	Depositor
Recommended contour level	0.062	Depositor
Map size (Å)	209.0464, 209.0464, 209.0464	wwPDB
Map dimensions	160, 160, 160	wwPDB
Map angles (°)	90.0, 90.0, 90.0	wwPDB
Pixel spacing (Å)	1.30654, 1.30654, 1.30654	Depositor

5 Model quality i

5.1 Standard geometry i

Bond lengths and bond angles in the following residue types are not validated in this section: ATP

The Z score for a bond length (or angle) is the number of standard deviations the observed value is removed from the expected value. A bond length (or angle) with $|Z| > 5$ is considered an outlier worth inspection. RMSZ is the root-mean-square of all Z scores of the bond lengths (or angles).

Mol	Chain	Bond lengths		Bond angles	
		RMSZ	# Z >5	RMSZ	# Z >5
1	A	0.26	0/4106	0.67	5/5529 (0.1%)
1	B	0.34	0/4106	0.81	17/5529 (0.3%)
1	C	0.36	0/4106	0.73	12/5529 (0.2%)
1	D	0.32	0/4106	0.68	3/5529 (0.1%)
1	E	0.29	0/4106	0.68	8/5529 (0.1%)
1	F	0.26	0/4106	0.67	5/5529 (0.1%)
All	All	0.31	0/24636	0.71	50/33174 (0.2%)

Chiral center outliers are detected by calculating the chiral volume of a chiral center and verifying if the center is modelled as a planar moiety or with the opposite hand. A planarity outlier is detected by checking planarity of atoms in a peptide group, atoms in a mainchain group or atoms of a sidechain that are expected to be planar.

Mol	Chain	#Chirality outliers	#Planarity outliers
1	A	0	4
1	B	0	6
1	C	0	5
1	D	0	5
1	E	0	5
1	F	0	2
All	All	0	27

There are no bond length outliers.

All (50) bond angle outliers are listed below:

Mol	Chain	Res	Type	Atoms	Z	Observed(°)	Ideal(°)
1	B	234	ALA	CA-C-N	9.51	138.81	121.70
1	B	234	ALA	C-N-CA	9.51	138.81	121.70
1	C	241	PRO	C-N-CD	-7.58	103.93	120.60
1	C	241	PRO	CA-C-N	7.41	144.78	127.00

Continued on next page...

Continued from previous page...

Mol	Chain	Res	Type	Atoms	Z	Observed(°)	Ideal(°)
1	C	241	PRO	C-N-CA	7.41	144.78	127.00
1	B	241	PRO	C-N-CD	-7.41	104.31	120.60
1	F	241	PRO	CA-C-N	7.08	144.00	127.00
1	F	241	PRO	C-N-CA	7.08	144.00	127.00
1	C	466	ASP	CA-C-N	6.82	133.98	121.70
1	C	466	ASP	C-N-CA	6.82	133.98	121.70
1	B	466	ASP	CA-C-N	6.82	133.98	121.70
1	B	466	ASP	C-N-CA	6.82	133.98	121.70
1	F	241	PRO	C-N-CD	-6.73	105.79	120.60
1	A	241	PRO	CA-C-N	6.66	142.99	127.00
1	A	241	PRO	C-N-CA	6.66	142.99	127.00
1	B	241	PRO	CA-C-N	6.58	142.79	127.00
1	B	241	PRO	C-N-CA	6.58	142.79	127.00
1	E	241	PRO	CA-C-N	6.45	142.48	127.00
1	E	241	PRO	C-N-CA	6.45	142.48	127.00
1	A	241	PRO	C-N-CD	-6.38	106.58	120.60
1	E	241	PRO	C-N-CD	-6.30	106.73	120.60
1	C	364	LEU	CA-C-N	6.23	132.92	121.70
1	C	364	LEU	C-N-CA	6.23	132.92	121.70
1	B	490	PRO	CA-C-N	6.06	132.61	121.70
1	B	490	PRO	C-N-CA	6.06	132.61	121.70
1	E	498	ASP	CA-C-N	6.04	133.07	121.54
1	E	498	ASP	C-N-CA	6.04	133.07	121.54
1	D	241	PRO	N-CA-C	6.00	118.02	110.70
1	C	249	GLY	N-CA-C	5.76	118.10	111.36
1	D	492	PHE	CA-C-N	5.65	131.86	121.70
1	D	492	PHE	C-N-CA	5.65	131.86	121.70
1	B	459	ALA	CA-C-N	5.62	132.28	121.54
1	B	459	ALA	C-N-CA	5.62	132.28	121.54
1	F	609	LEU	CA-C-N	5.28	131.62	121.54
1	F	609	LEU	C-N-CA	5.28	131.62	121.54
1	A	418	GLN	CA-C-N	5.23	131.53	121.54
1	A	418	GLN	C-N-CA	5.23	131.53	121.54
1	E	391	VAL	N-CA-C	5.18	111.75	106.21
1	B	609	LEU	CA-C-N	5.16	131.40	121.54
1	B	609	LEU	C-N-CA	5.16	131.40	121.54
1	B	471	GLU	CA-C-N	5.15	131.37	121.54
1	B	471	GLU	C-N-CA	5.15	131.37	121.54
1	C	248	MET	CA-C-N	5.12	124.83	119.92
1	C	248	MET	C-N-CA	5.12	124.83	119.92
1	B	494	THR	CA-C-N	5.08	128.43	120.82
1	B	494	THR	C-N-CA	5.08	128.43	120.82

Continued on next page...

Continued from previous page...

Mol	Chain	Res	Type	Atoms	Z	Observed(°)	Ideal(°)
1	C	609	LEU	CA-C-N	5.05	131.19	121.54
1	C	609	LEU	C-N-CA	5.05	131.19	121.54
1	E	609	LEU	CA-C-N	5.01	131.12	121.54
1	E	609	LEU	C-N-CA	5.01	131.12	121.54

There are no chirality outliers.

All (27) planarity outliers are listed below:

Mol	Chain	Res	Type	Group
1	A	464	GLU	Peptide
1	A	473	LEU	Peptide
1	A	487	ASP	Peptide
1	A	615	GLY	Peptide
1	B	292	ASN	Peptide
1	B	346	VAL	Peptide
1	B	417	HIS	Peptide
1	B	472	SER	Peptide
1	B	496	GLN	Peptide
1	B	615	GLY	Peptide
1	C	322	LEU	Peptide
1	C	323	HIS	Peptide
1	C	464	GLU	Peptide
1	C	467	MET	Peptide
1	C	615	GLY	Peptide
1	D	321	GLY	Peptide
1	D	419	LEU	Peptide
1	D	433	THR	Peptide
1	D	462	LYS	Peptide
1	D	615	GLY	Peptide
1	E	345	GLY	Peptide
1	E	464	GLU	Peptide
1	E	471	GLU	Peptide
1	E	484	LEU	Peptide
1	E	491	ALA	Peptide
1	F	322	LEU	Peptide
1	F	472	SER	Peptide

5.2 Too-close contacts [i](#)

In the following table, the Non-H and H(model) columns list the number of non-hydrogen atoms and hydrogen atoms in the chain respectively. The H(added) column lists the number of hydrogen

atoms added and optimized by MolProbity. The Clashes column lists the number of clashes within the asymmetric unit, whereas Symm-Clashes lists symmetry-related clashes.

Mol	Chain	Non-H	H(model)	H(added)	Clashes	Symm-Clashes
1	A	4048	0	4193	72	0
1	B	4048	0	4193	60	0
1	C	4048	0	4193	68	0
1	D	4048	0	4193	65	0
1	E	4048	0	4193	64	0
1	F	4048	0	4193	52	0
2	A	62	0	24	1	0
2	B	62	0	24	1	0
2	C	62	0	24	9	0
2	D	62	0	24	4	0
2	E	62	0	24	3	0
2	F	62	0	24	3	0
All	All	24660	0	25302	338	0

The all-atom clashscore is defined as the number of clashes found per 1000 atoms (including hydrogen atoms). The all-atom clashscore for this structure is 7.

All (338) close contacts within the same asymmetric unit are listed below, sorted by their clash magnitude.

Atom-1	Atom-2	Interatomic distance (Å)	Clash overlap (Å)
1:E:414:MET:HB3	1:E:420:LEU:HD11	1.72	0.71
1:D:435:ASN:HD22	1:D:494:THR:HG21	1.57	0.70
1:B:413:ARG:HG2	1:A:249:GLY:H	1.60	0.67
1:D:314:ARG:HG3	1:D:315:ARG:HG2	1.78	0.66
1:F:624:GLN:HG3	1:A:610:ASP:HB2	1.79	0.65
1:F:398:PRO:O	1:F:403:ARG:NH1	2.31	0.63
1:D:231:PHE:HA	1:D:235:PHE:HB3	1.81	0.63
1:E:624:GLN:HG3	1:F:610:ASP:HB2	1.82	0.62
1:D:505:ASN:HD22	1:D:711:LEU:HD13	1.64	0.62
1:A:708:LYS:HB2	2:A:802:ATP:H5'2	1.82	0.61
1:B:610:ASP:HB2	1:A:624:GLN:HG3	1.81	0.61
1:F:488:ILE:HG22	1:F:490:PRO:HD3	1.81	0.61
1:A:390:GLU:HG2	1:A:391:VAL:HG13	1.83	0.61
1:A:229:ASP:OD1	1:A:233:ARG:NH1	2.34	0.61
1:E:435:ASN:ND2	1:E:494:THR:O	2.34	0.60
1:D:286:ASN:HB3	1:D:289:GLU:HB2	1.82	0.60
1:A:651:VAL:HG12	1:A:655:MET:HE2	1.82	0.60
1:E:352:ASN:HB2	1:F:288:PRO:HB3	1.83	0.60
1:E:420:LEU:HD13	1:E:475:VAL:HB	1.82	0.60

Continued on next page...

Continued from previous page...

Atom-1	Atom-2	Interatomic distance (Å)	Clash overlap (Å)
1:B:259:TYR:HB2	1:B:394:GLU:HA	1.83	0.60
1:C:312:GLU:O	1:C:363:GLN:NE2	2.34	0.60
1:D:453:MET:SD	1:D:458:LYS:NZ	2.75	0.60
1:A:687:LYS:HE3	1:A:689:LYS:HB3	1.84	0.60
1:E:676:LEU:HD21	1:E:733:LEU:HD21	1.84	0.59
1:A:337:ARG:HH21	1:A:341:ALA:HB3	1.67	0.59
1:E:286:ASN:HB3	1:E:289:GLU:HB2	1.84	0.59
1:D:259:TYR:HB2	1:D:394:GLU:HA	1.85	0.59
1:B:362:GLU:OE1	1:C:271:ARG:NH1	2.36	0.59
1:D:687:LYS:HE3	1:D:689:LYS:HB3	1.83	0.59
1:C:540:LEU:HB3	1:C:664:THR:HG22	1.84	0.59
1:C:231:PHE:HA	1:C:235:PHE:HB3	1.84	0.58
1:B:477:ARG:HH11	1:B:481:LEU:HD21	1.68	0.58
1:C:651:VAL:HG12	1:C:655:MET:HE2	1.84	0.58
1:C:386:PRO:O	1:D:446:ARG:NH2	2.35	0.58
1:E:435:ASN:ND2	1:E:494:THR:OG1	2.35	0.58
1:C:624:GLN:HG3	1:D:610:ASP:HB2	1.86	0.58
1:E:250:CYS:HA	1:F:414:MET:HE1	1.86	0.57
1:D:713:LEU:HD22	1:D:732:LEU:HB3	1.85	0.57
1:F:257:LEU:HD23	1:F:389:LEU:HB3	1.86	0.57
1:B:694:ILE:HG23	1:B:730:LEU:HD21	1.86	0.57
1:D:624:GLN:HG3	1:E:610:ASP:HB2	1.86	0.57
1:B:352:ASN:ND2	1:C:329:GLU:OE2	2.36	0.57
1:B:363:GLN:HG3	1:B:365:ASN:H	1.70	0.56
1:A:230:ILE:HD12	1:A:273:ILE:HD13	1.86	0.56
1:C:290:ILE:HG12	1:C:302:ILE:HG23	1.87	0.56
1:E:505:ASN:HD22	1:E:711:LEU:HD13	1.69	0.56
1:B:713:LEU:HD22	1:B:732:LEU:HB3	1.86	0.56
1:E:321:GLY:HA3	1:E:366:ASN:HD22	1.69	0.56
1:F:713:LEU:HD22	1:F:732:LEU:HB3	1.86	0.56
1:C:250:CYS:SG	1:D:449:GLN:NE2	2.79	0.56
1:C:723:GLU:O	1:C:727:ARG:NH2	2.39	0.56
1:B:233:ARG:HA	1:B:236:ALA:HB2	1.87	0.56
1:B:388:ARG:NH2	2:C:801:ATP:O2G	2.39	0.55
1:B:648:ARG:NH1	1:A:656:GLU:OE2	2.39	0.55
1:D:436:PHE:HB3	1:D:490:PRO:HB3	1.88	0.55
1:E:723:GLU:O	1:E:727:ARG:NH2	2.39	0.55
1:B:290:ILE:HG23	1:B:301:ASN:HB2	1.89	0.55
1:B:540:LEU:HB3	1:B:664:THR:HG22	1.88	0.55
1:F:286:ASN:HB3	1:F:289:GLU:HB3	1.88	0.55
1:C:708:LYS:HB2	2:C:802:ATP:H5'2	1.89	0.55

Continued on next page...

Continued from previous page...

Atom-1	Atom-2	Interatomic distance (Å)	Clash overlap (Å)
1:D:687:LYS:HE2	1:D:690:GLU:HG3	1.88	0.55
1:A:335:LYS:HE3	1:A:337:ARG:HD3	1.87	0.55
1:C:267:THR:OG1	2:C:801:ATP:O3G	2.24	0.55
1:D:250:CYS:SG	1:D:251:LYS:N	2.78	0.55
1:A:258:LEU:HA	1:A:393:MET:HB3	1.89	0.55
1:E:386:PRO:HA	1:E:390:GLU:HB2	1.89	0.55
1:E:269:LEU:O	1:E:273:ILE:N	2.39	0.54
1:F:312:GLU:HG3	1:F:322:LEU:HB2	1.89	0.54
1:C:317:GLY:O	1:C:363:GLN:NE2	2.39	0.54
1:F:249:GLY:H	1:A:413:ARG:HE	1.56	0.54
1:D:359:ASP:OD2	1:D:385:ARG:NH1	2.38	0.54
1:F:239:VAL:HG11	1:A:463:VAL:HG22	1.89	0.54
1:B:363:GLN:HE21	1:B:366:ASN:H	1.56	0.54
1:A:593:TYR:O	1:A:638:ARG:NH1	2.40	0.54
1:E:358:ILE:HD11	1:E:388:ARG:HG3	1.89	0.54
1:E:381:GLU:HA	1:E:384:LEU:HB2	1.89	0.54
1:A:284:VAL:HA	1:A:326:ILE:HB	1.89	0.54
1:F:359:ASP:OD2	1:F:385:ARG:NH2	2.40	0.54
1:A:254:LYS:NZ	1:A:363:GLN:O	2.40	0.54
1:A:418:GLN:NE2	1:A:474:GLN:OE1	2.40	0.54
1:E:540:LEU:HD11	1:E:646:THR:HG22	1.90	0.53
1:A:466:ASP:OD2	1:A:469:LYS:NZ	2.41	0.53
1:A:460:SER:HB2	1:A:469:LYS:HE3	1.90	0.53
1:B:505:ASN:HD22	1:B:711:LEU:HD13	1.72	0.53
1:F:448:ALA:O	1:F:452:ALA:N	2.41	0.53
1:B:541:LEU:HB2	1:B:645:THR:HG22	1.89	0.53
1:B:340:MET:HE2	1:C:335:LYS:HZ3	1.73	0.53
1:A:259:TYR:HB2	1:A:394:GLU:HA	1.90	0.53
1:A:266:LYS:HG2	1:A:395:ILE:HD12	1.90	0.52
1:A:407:LEU:HD21	1:A:441:LEU:HD22	1.91	0.52
1:D:241:PRO:HB2	1:D:245:VAL:HG23	1.91	0.52
1:A:676:LEU:HD21	1:A:733:LEU:HD21	1.92	0.52
1:F:723:GLU:O	1:F:727:ARG:NH2	2.43	0.52
1:B:309:ALA:HB1	1:B:365:ASN:HD22	1.74	0.52
1:F:238:ARG:HH22	1:F:253:VAL:HG12	1.75	0.52
1:B:508:ILE:HD11	1:B:707:ILE:HD11	1.91	0.52
1:C:414:MET:HE3	1:C:420:LEU:HD21	1.92	0.52
1:C:680:LEU:HD21	1:C:686:PHE:HD2	1.74	0.52
1:E:713:LEU:HD22	1:E:732:LEU:HB3	1.92	0.52
1:C:388:ARG:NH2	2:D:801:ATP:O3G	2.43	0.52
1:C:270:ALA:HB2	1:C:372:MET:HE1	1.91	0.52

Continued on next page...

Continued from previous page...

Atom-1	Atom-2	Interatomic distance (Å)	Clash overlap (Å)
1:C:420:LEU:HD13	1:C:475:VAL:HB	1.91	0.52
1:C:541:LEU:N	1:C:644:GLY:O	2.42	0.52
1:F:435:ASN:OD1	1:F:495:ASN:ND2	2.43	0.52
1:C:270:ALA:HB1	1:C:326:ILE:HD13	1.92	0.52
1:C:517:VAL:HG11	1:C:552:LEU:HD13	1.91	0.51
1:B:651:VAL:HG12	1:B:655:MET:HE2	1.92	0.51
1:B:450:SER:OG	1:A:232:ARG:NH1	2.43	0.51
1:E:312:GLU:OE1	1:E:314:ARG:NH1	2.43	0.51
1:E:651:VAL:HG12	1:E:655:MET:HE2	1.91	0.51
1:A:480:PHE:HB2	1:A:484:LEU:HD23	1.93	0.51
1:F:421:SER:HB2	1:F:474:GLN:HG3	1.92	0.51
1:C:463:VAL:HG23	1:C:465:VAL:HG13	1.92	0.50
1:C:248:MET:HE1	1:D:415:ARG:HB3	1.93	0.50
1:E:259:TYR:HB2	1:E:394:GLU:HA	1.91	0.50
1:C:249:GLY:HA3	1:D:413:ARG:HD2	1.94	0.50
1:D:270:ALA:HA	1:D:273:ILE:HG22	1.93	0.50
1:B:300:ALA:HA	1:B:303:ARG:HG2	1.93	0.50
1:D:290:ILE:HG12	1:D:302:ILE:HG23	1.94	0.50
1:C:322:LEU:N	1:C:366:ASN:OD1	2.44	0.50
1:D:247:GLN:O	1:E:413:ARG:NH2	2.43	0.50
1:B:413:ARG:HG3	1:A:248:MET:HE3	1.94	0.50
1:A:480:PHE:HB3	1:A:483:SER:HB2	1.93	0.50
1:E:323:HIS:HB2	1:E:324:ILE:HD12	1.93	0.50
1:E:721:ASP:HB2	1:E:724:TYR:HD2	1.76	0.50
1:C:519:ASP:HA	1:C:522:GLU:HG2	1.94	0.50
1:C:403:ARG:HA	1:C:406:ILE:HG22	1.93	0.49
1:A:562:PHE:HD2	1:A:599:CYS:HB2	1.77	0.49
1:B:562:PHE:HD2	1:B:599:CYS:HB2	1.77	0.49
1:C:233:ARG:NH2	1:D:487:ASP:OD1	2.46	0.49
1:A:456:HIS:HD2	1:A:473:LEU:HD13	1.78	0.49
1:E:337:ARG:HH21	1:E:341:ALA:HB3	1.76	0.49
1:C:653:GLN:HB2	1:C:658:LEU:HD12	1.94	0.49
1:A:670:ILE:HD11	1:A:705:ILE:HG22	1.94	0.49
1:E:238:ARG:NH2	1:E:253:VAL:O	2.46	0.49
1:D:286:ASN:OD1	1:D:287:GLY:N	2.42	0.49
1:A:238:ARG:HE	1:A:366:ASN:HB2	1.77	0.49
1:B:390:GLU:OE1	1:C:446:ARG:NH2	2.40	0.49
1:E:345:GLY:HA2	1:E:348:ASP:H	1.77	0.49
1:E:250:CYS:SG	1:F:449:GLN:NE2	2.86	0.49
1:F:223:LEU:HB3	1:F:226:GLU:HB3	1.95	0.49
1:B:284:VAL:HG22	1:B:326:ILE:HD12	1.95	0.48

Continued on next page...

Continued from previous page...

Atom-1	Atom-2	Interatomic distance (Å)	Clash overlap (Å)
1:D:681:GLU:OE1	1:D:691:ARG:NH1	2.46	0.48
1:F:262:PRO:HG3	1:F:374:ASN:HB3	1.95	0.48
1:D:270:ALA:HB1	1:D:326:ILE:HD13	1.96	0.48
1:A:421:SER:OG	1:A:423:ASP:OD1	2.24	0.48
1:D:232:ARG:HH12	1:D:233:ARG:HH21	1.61	0.48
1:D:245:VAL:HG13	1:D:249:GLY:HA3	1.94	0.48
1:F:246:GLU:O	1:A:413:ARG:NH2	2.47	0.48
1:A:522:GLU:HA	1:A:525:VAL:HB	1.95	0.48
1:E:256:ILE:HA	1:E:391:VAL:HG23	1.94	0.48
1:E:270:ALA:HA	1:E:273:ILE:HG22	1.95	0.48
1:A:229:ASP:HB3	1:A:393:MET:HE1	1.95	0.48
1:C:352:ASN:HA	1:C:355:LEU:HB2	1.95	0.48
1:D:476:THR:N	1:D:479:ASP:OD2	2.45	0.48
1:D:486:ASN:HA	1:D:487:ASP:HA	1.65	0.48
1:A:688:ASP:OD1	1:A:691:ARG:NH1	2.46	0.48
1:C:303:ARG:NH1	1:D:289:GLU:O	2.42	0.48
1:C:312:GLU:OE1	1:C:321:GLY:N	2.40	0.48
1:C:363:GLN:HG2	1:C:364:LEU:H	1.79	0.48
1:D:233:ARG:HG3	1:D:391:VAL:HG11	1.97	0.47
1:E:406:ILE:HG23	1:E:441:LEU:HD22	1.96	0.47
1:B:545:PRO:HG3	1:A:659:ASN:HD21	1.78	0.47
1:B:563:PRO:HD2	1:B:597:LEU:HB2	1.95	0.47
1:D:457:ILE:HA	1:D:470:ALA:HB3	1.95	0.47
1:F:241:PRO:HB2	1:F:244:ILE:H	1.79	0.47
1:F:329:GLU:HG2	1:F:332:ALA:H	1.80	0.47
1:F:447:ALA:O	1:F:451:THR:N	2.47	0.47
1:B:460:SER:O	1:B:462:LYS:N	2.47	0.47
1:B:462:LYS:HG2	1:B:465:VAL:HG13	1.96	0.47
1:D:268:LEU:HD22	2:D:801:ATP:H2'	1.97	0.47
1:E:681:GLU:OE1	1:E:691:ARG:NH1	2.47	0.47
1:D:382:ALA:O	1:D:388:ARG:NH1	2.47	0.47
1:E:347:HIS:O	1:E:351:VAL:N	2.48	0.47
1:F:687:LYS:HE3	1:F:689:LYS:HB3	1.96	0.47
1:A:653:GLN:HB2	1:A:658:LEU:HD12	1.97	0.47
1:A:713:LEU:HD22	1:A:732:LEU:HB3	1.96	0.47
1:B:250:CYS:SG	1:C:449:GLN:NE2	2.89	0.47
1:C:421:SER:OG	1:C:422:ALA:N	2.48	0.47
1:D:446:ARG:HA	1:D:449:GLN:HE21	1.80	0.46
1:E:508:ILE:O	2:E:802:ATP:N6	2.48	0.46
1:F:420:LEU:HD12	1:F:424:VAL:HG11	1.96	0.46
1:A:414:MET:HE1	1:A:449:GLN:HB3	1.97	0.46

Continued on next page...

Continued from previous page...

Atom-1	Atom-2	Interatomic distance (Å)	Clash overlap (Å)
1:C:363:GLN:HB3	1:C:365:ASN:HB3	1.97	0.46
1:A:544:PRO:O	1:A:549:LYS:NZ	2.48	0.46
1:B:421:SER:HB3	1:B:424:VAL:HG23	1.98	0.46
1:E:231:PHE:HA	1:E:235:PHE:HB3	1.98	0.46
1:C:218:MET:HB3	1:C:272:GLN:HE22	1.78	0.46
1:C:266:LYS:NZ	2:C:801:ATP:O1B	2.46	0.46
1:E:541:LEU:HD23	1:E:665:ILE:HB	1.97	0.46
1:F:569:SER:OG	1:F:571:ASP:OD1	2.30	0.46
1:B:333:ILE:HG23	1:B:350:VAL:HG13	1.98	0.46
1:C:585:MET:HE2	1:C:608:LEU:HD13	1.98	0.46
1:C:593:TYR:O	1:C:638:ARG:NH1	2.43	0.46
1:A:316:LEU:HD21	1:A:319:ASN:HD22	1.81	0.46
1:B:292:ASN:HB2	1:A:296:GLY:HA2	1.96	0.46
1:B:455:ARG:HA	1:B:459:ALA:HA	1.98	0.46
1:E:403:ARG:HA	1:E:406:ILE:HG22	1.96	0.46
1:D:593:TYR:O	1:D:638:ARG:NH1	2.49	0.46
1:D:357:LYS:O	1:D:363:GLN:NE2	2.49	0.45
1:F:505:ASN:HD22	1:F:711:LEU:HD13	1.80	0.45
1:B:611:TYR:O	1:A:624:GLN:NE2	2.50	0.45
1:C:505:ASN:HD22	1:C:711:LEU:HD13	1.80	0.45
1:D:562:PHE:HD1	1:D:597:LEU:HB3	1.81	0.45
1:D:499:TYR:CZ	1:D:558:GLU:HG3	2.51	0.45
1:E:219:GLY:HA3	1:E:409:ILE:HG21	1.99	0.45
1:E:257:LEU:HD22	1:E:384:LEU:HD21	1.98	0.45
1:C:344:THR:HB	1:D:343:SER:HB2	1.98	0.45
1:E:551:ALA:HB2	2:E:802:ATP:H5'2	1.99	0.45
1:F:462:LYS:HG2	1:F:463:VAL:H	1.82	0.45
1:B:260:GLY:O	1:B:374:ASN:ND2	2.39	0.45
1:C:362:GLU:OE2	1:D:271:ARG:NH1	2.50	0.45
1:D:415:ARG:O	1:D:419:LEU:N	2.49	0.45
1:A:435:ASN:ND2	1:A:563:PRO:O	2.50	0.45
1:B:567:ILE:HG12	1:B:601:VAL:HB	1.98	0.45
1:D:403:ARG:HA	1:D:406:ILE:HG22	1.98	0.45
1:F:486:ASN:HA	1:F:487:ASP:HA	1.82	0.45
1:B:624:GLN:HG3	1:C:610:ASP:HB2	1.99	0.45
1:E:463:VAL:HA	1:E:464:GLU:HA	1.66	0.45
1:A:509:LYS:HA	1:A:514:VAL:HG11	1.99	0.45
1:D:300:ALA:HB2	1:E:292:ASN:HB2	1.98	0.45
1:D:462:LYS:O	1:D:464:GLU:N	2.50	0.45
1:B:494:THR:HB	1:B:495:ASN:H	1.62	0.44
1:C:548:GLY:N	2:C:802:ATP:O1B	2.51	0.44

Continued on next page...

Continued from previous page...

Atom-1	Atom-2	Interatomic distance (Å)	Clash overlap (Å)
1:D:456:HIS:HB3	1:D:473:LEU:HD22	1.98	0.44
1:F:309:ALA:O	1:F:365:ASN:ND2	2.49	0.44
1:F:436:PHE:HZ	1:F:444:LEU:HD22	1.83	0.44
1:D:221:GLY:O	2:D:801:ATP:N6	2.47	0.44
1:F:547:SER:OG	1:F:669:ASN:OD1	2.31	0.44
1:A:382:ALA:O	1:A:388:ARG:NH1	2.50	0.44
1:B:382:ALA:O	1:B:388:ARG:NH1	2.50	0.44
1:C:352:ASN:HD21	1:D:332:ALA:HB2	1.83	0.44
1:E:267:THR:O	1:E:271:ARG:N	2.45	0.44
1:A:528:THR:HG22	1:A:639:LYS:HB3	1.99	0.44
1:B:549:LYS:N	2:B:802:ATP:O1B	2.48	0.44
1:C:508:ILE:O	2:C:802:ATP:N6	2.49	0.44
1:D:243:GLU:HG2	1:D:244:ILE:HG12	1.98	0.44
1:E:435:ASN:HD21	1:E:494:THR:HG1	1.64	0.44
1:F:268:LEU:HD23	2:F:801:ATP:H4'	1.99	0.44
1:A:484:LEU:O	1:A:489:LYS:NZ	2.48	0.44
1:E:585:MET:HE2	1:E:608:LEU:HD13	2.00	0.44
1:A:480:PHE:HB3	1:A:484:LEU:H	1.83	0.44
1:C:365:ASN:HB2	1:C:366:ASN:H	1.60	0.44
1:C:267:THR:OG1	2:C:801:ATP:O2B	2.36	0.43
1:D:676:LEU:HD23	1:D:698:VAL:HG21	2.00	0.43
1:B:331:ASP:OD2	1:B:373:THR:OG1	2.36	0.43
1:D:267:THR:OG1	2:D:801:ATP:O2G	2.34	0.43
1:B:235:PHE:HE2	1:B:273:ILE:HG13	1.83	0.43
1:D:651:VAL:HG12	1:D:655:MET:HE2	1.99	0.43
1:E:722:PRO:HA	1:E:725:ARG:HE	1.82	0.43
1:A:457:ILE:HG13	1:A:458:LYS:HG2	2.00	0.43
1:A:555:LYS:NZ	1:A:559:GLU:OE2	2.51	0.43
1:C:400:GLU:CD	1:C:403:ARG:HH22	2.27	0.43
1:F:408:HIS:HB2	1:F:426:ILE:HD13	2.00	0.43
1:A:564:PHE:HD2	1:A:598:SER:HB2	1.83	0.43
1:B:380:ASP:HB3	1:B:382:ALA:H	1.84	0.43
1:F:677:LEU:O	1:F:681:GLU:N	2.46	0.43
1:B:309:ALA:HB2	1:B:322:LEU:HD22	2.01	0.43
1:B:531:SER:OG	1:B:532:ASP:N	2.51	0.43
1:B:694:ILE:HA	1:B:730:LEU:HD11	2.00	0.43
1:B:519:ASP:OD1	1:B:520:ASP:N	2.51	0.43
1:C:233:ARG:HG3	1:C:391:VAL:HG11	2.01	0.43
1:C:284:VAL:HG22	1:C:326:ILE:HD12	2.00	0.43
1:C:358:ILE:HD11	1:C:388:ARG:HD3	2.01	0.43
1:D:290:ILE:HD13	1:D:333:ILE:HD11	2.00	0.42

Continued on next page...

Continued from previous page...

Atom-1	Atom-2	Interatomic distance (Å)	Clash overlap (Å)
1:A:323:HIS:HA	1:A:367:ILE:HG22	2.01	0.42
1:C:676:LEU:HD21	1:C:733:LEU:HD21	2.01	0.42
1:E:342:GLY:O	1:E:347:HIS:NE2	2.50	0.42
1:E:531:SER:OG	1:E:532:ASP:N	2.52	0.42
1:A:456:HIS:CD2	1:A:473:LEU:HD13	2.54	0.42
1:C:435:ASN:H	1:C:489:LYS:HZ1	1.68	0.42
1:D:564:PHE:HD2	1:D:598:SER:HB2	1.84	0.42
1:F:241:PRO:HG2	1:F:245:VAL:HG23	2.01	0.42
1:E:232:ARG:NE	1:F:454:ASN:OD1	2.47	0.42
1:E:334:CYS:HA	1:E:351:VAL:HG22	2.01	0.42
1:F:618:PHE:O	1:A:617:ARG:NH2	2.53	0.42
1:A:595:SER:OG	1:A:596:GLN:N	2.53	0.42
1:E:220:ILE:HD13	1:E:269:LEU:HD23	2.02	0.42
1:B:502:TYR:OH	1:B:572:LYS:NZ	2.52	0.42
1:C:290:ILE:HG23	1:C:301:ASN:HB2	2.01	0.42
1:E:299:GLU:HA	1:E:350:VAL:HG12	2.01	0.42
1:A:341:ALA:O	1:A:347:HIS:NE2	2.51	0.42
1:B:359:ASP:OD2	1:B:385:ARG:NH2	2.53	0.42
1:A:463:VAL:HA	1:A:464:GLU:HA	1.73	0.42
1:B:373:THR:OG1	1:B:374:ASN:N	2.53	0.42
1:C:386:PRO:HG2	1:D:440:GLU:HA	2.01	0.42
1:D:562:PHE:CD1	1:D:597:LEU:HB3	2.55	0.42
1:E:337:ARG:H	1:E:337:ARG:HD3	1.85	0.42
1:F:335:LYS:HD3	1:F:347:HIS:CE1	2.55	0.42
1:F:493:GLY:HA2	1:F:494:THR:HA	1.79	0.42
1:A:303:ARG:HG2	1:A:353:GLN:HE21	1.85	0.42
1:E:290:ILE:HG12	1:E:302:ILE:HG23	2.02	0.42
1:F:454:ASN:O	1:F:459:ALA:N	2.53	0.42
1:F:651:VAL:HG12	1:F:655:MET:HE2	2.01	0.42
1:C:646:THR:HG21	1:C:652:LEU:HD22	2.01	0.41
1:A:713:LEU:HD23	1:A:716:MET:HE3	2.02	0.41
1:D:232:ARG:HA	1:D:236:ALA:HB2	2.02	0.41
1:A:267:THR:HA	1:A:372:MET:HE1	2.02	0.41
1:A:418:GLN:HG3	1:A:420:LEU:H	1.86	0.41
1:A:597:LEU:HD23	1:A:639:LYS:HB2	2.01	0.41
1:B:312:GLU:HA	1:B:313:GLN:HA	1.82	0.41
1:C:403:ARG:NH1	1:C:434:LYS:O	2.54	0.41
1:D:364:LEU:HB3	1:D:366:ASN:H	1.85	0.41
1:E:323:HIS:O	1:E:368:LEU:N	2.54	0.41
1:B:457:ILE:HG21	1:B:472:SER:HA	2.03	0.41
1:D:541:LEU:HD23	1:D:665:ILE:HB	2.01	0.41

Continued on next page...

Continued from previous page...

Atom-1	Atom-2	Interatomic distance (Å)	Clash overlap (Å)
1:E:406:ILE:HD11	2:E:801:ATP:C6	2.56	0.41
1:C:691:ARG:O	1:C:695:ALA:N	2.52	0.41
1:E:336:GLN:HB3	1:E:380:ASP:HB2	2.03	0.41
1:E:340:MET:HE2	1:F:337:ARG:HB2	2.02	0.41
1:E:597:LEU:HD23	1:E:639:LYS:HB2	2.01	0.41
1:D:716:MET:HE3	1:D:732:LEU:HD13	2.02	0.41
1:B:413:ARG:HG2	1:A:249:GLY:N	2.33	0.41
1:C:446:ARG:HA	1:C:449:GLN:HE21	1.86	0.41
1:C:563:PRO:HD2	1:C:597:LEU:HB2	2.02	0.41
1:C:670:ILE:HD13	1:C:676:LEU:HB2	2.03	0.41
1:D:680:LEU:HD21	1:D:686:PHE:HB2	2.03	0.41
1:F:248:MET:HE2	1:A:414:MET:HE2	2.03	0.41
1:A:217:LYS:HD2	1:A:220:ILE:HD11	2.02	0.41
1:B:365:ASN:HB3	1:B:367:ILE:HG23	2.02	0.41
1:B:631:LYS:NZ	2:C:802:ATP:O3G	2.50	0.41
1:D:232:ARG:NH2	1:E:451:THR:OG1	2.54	0.41
1:E:646:THR:HG21	1:E:652:LEU:HD22	2.03	0.41
1:F:249:GLY:N	1:A:413:ARG:HE	2.17	0.41
1:F:708:LYS:HB2	2:F:802:ATP:H5'1	2.01	0.41
1:A:720:MET:HG3	1:A:728:LYS:HG2	2.03	0.41
1:C:548:GLY:HA2	2:C:802:ATP:H5'1	2.03	0.40
1:E:486:ASN:HA	1:E:487:ASP:HA	1.83	0.40
1:F:539:VAL:HG23	1:F:663:THR:HG23	2.02	0.40
1:F:454:ASN:HA	1:F:458:LYS:HB3	2.02	0.40
1:A:323:HIS:HB2	1:A:324:ILE:HD12	2.03	0.40
1:D:407:LEU:HG	1:D:441:LEU:HD21	2.03	0.40
1:E:593:TYR:O	1:E:638:ARG:NH1	2.54	0.40
1:F:299:GLU:HA	1:F:302:ILE:HG12	2.04	0.40
1:B:539:VAL:HG23	1:B:663:THR:HG23	2.03	0.40
1:B:541:LEU:HD23	1:B:665:ILE:HB	2.03	0.40
1:C:261:PRO:HG2	1:C:264:CYS:SG	2.62	0.40
1:F:549:LYS:NZ	2:F:802:ATP:O1G	2.54	0.40

There are no symmetry-related clashes.

5.3 Torsion angles [i](#)

5.3.1 Protein backbone [i](#)

In the following table, the Percentiles column shows the percent Ramachandran outliers of the chain as a percentile score with respect to all PDB entries followed by that with respect to all EM

entries.

The Analysed column shows the number of residues for which the backbone conformation was analysed, and the total number of residues.

Mol	Chain	Analysed	Favoured	Allowed	Outliers	Percentiles	
1	A	518/769 (67%)	456 (88%)	62 (12%)	0	100	100
1	B	518/769 (67%)	447 (86%)	70 (14%)	1 (0%)	43	72
1	C	518/769 (67%)	458 (88%)	59 (11%)	1 (0%)	43	72
1	D	518/769 (67%)	451 (87%)	66 (13%)	1 (0%)	43	72
1	E	518/769 (67%)	452 (87%)	66 (13%)	0	100	100
1	F	518/769 (67%)	461 (89%)	56 (11%)	1 (0%)	43	72
All	All	3108/4614 (67%)	2725 (88%)	379 (12%)	4 (0%)	49	78

All (4) Ramachandran outliers are listed below:

Mol	Chain	Res	Type
1	B	461	THR
1	D	463	VAL
1	F	490	PRO
1	C	488	ILE

5.3.2 Protein sidechains [i](#)

In the following table, the Percentiles column shows the percent sidechain outliers of the chain as a percentile score with respect to all PDB entries followed by that with respect to all EM entries.

The Analysed column shows the number of residues for which the sidechain conformation was analysed, and the total number of residues.

Mol	Chain	Analysed	Rotameric	Outliers	Percentiles	
1	A	444/660 (67%)	444 (100%)	0	100	100
1	B	444/660 (67%)	442 (100%)	2 (0%)	81	80
1	C	444/660 (67%)	441 (99%)	3 (1%)	76	77
1	D	444/660 (67%)	442 (100%)	2 (0%)	81	80
1	E	444/660 (67%)	444 (100%)	0	100	100
1	F	444/660 (67%)	444 (100%)	0	100	100
All	All	2664/3960 (67%)	2657 (100%)	7 (0%)	84	83

All (7) residues with a non-rotameric sidechain are listed below:

Mol	Chain	Res	Type
1	B	239	VAL
1	B	253	VAL
1	C	391	VAL
1	C	463	VAL
1	C	488	ILE
1	D	239	VAL
1	D	397	LEU

Sometimes sidechains can be flipped to improve hydrogen bonding and reduce clashes. All (50) such sidechains are listed below:

Mol	Chain	Res	Type
1	B	252	HIS
1	B	301	ASN
1	B	353	GLN
1	B	363	GLN
1	B	365	ASN
1	B	366	ASN
1	B	449	GLN
1	B	454	ASN
1	B	486	ASN
1	B	505	ASN
1	B	526	GLN
1	B	546	HIS
1	B	697	GLN
1	C	301	ASN
1	C	336	GLN
1	C	449	GLN
1	C	505	ASN
1	C	526	GLN
1	C	530	ASN
1	D	363	GLN
1	D	374	ASN
1	D	435	ASN
1	D	449	GLN
1	D	505	ASN
1	D	526	GLN
1	E	301	ASN
1	E	323	HIS
1	E	353	GLN
1	E	363	GLN
1	E	435	ASN

Continued on next page...

Continued from previous page...

Mol	Chain	Res	Type
1	E	505	ASN
1	F	247	GLN
1	F	252	HIS
1	F	272	GLN
1	F	301	ASN
1	F	449	GLN
1	F	505	ASN
1	F	530	ASN
1	F	719	GLN
1	A	252	HIS
1	A	319	ASN
1	A	365	ASN
1	A	374	ASN
1	A	418	GLN
1	A	456	HIS
1	A	486	ASN
1	A	596	GLN
1	A	659	ASN
1	A	666	HIS
1	A	719	GLN

5.3.3 RNA [i](#)

There are no RNA molecules in this entry.

5.4 Non-standard residues in protein, DNA, RNA chains [i](#)

There are no non-standard protein/DNA/RNA residues in this entry.

5.5 Carbohydrates [i](#)

There are no oligosaccharides in this entry.

5.6 Ligand geometry [i](#)

12 ligands are modelled in this entry.

In the following table, the Counts columns list the number of bonds (or angles) for which Mogul statistics could be retrieved, the number of bonds (or angles) that are observed in the model and the number of bonds (or angles) that are defined in the Chemical Component Dictionary. The Link column lists molecule types, if any, to which the group is linked. The Z score for a bond

length (or angle) is the number of standard deviations the observed value is removed from the expected value. A bond length (or angle) with $|Z| > 2$ is considered an outlier worth inspection. RMSZ is the root-mean-square of all Z scores of the bond lengths (or angles).

Mol	Type	Chain	Res	Link	Bond lengths			Bond angles		
					Counts	RMSZ	# Z > 2	Counts	RMSZ	# Z > 2
2	ATP	A	802	-	32,33,33	1.33	4 (12%)	48,52,52	1.78	8 (16%)
2	ATP	E	801	-	32,33,33	1.30	3 (9%)	48,52,52	1.89	9 (18%)
2	ATP	B	802	-	32,33,33	1.33	5 (15%)	48,52,52	1.77	8 (16%)
2	ATP	F	802	-	32,33,33	1.39	4 (12%)	48,52,52	1.81	7 (14%)
2	ATP	D	801	-	32,33,33	1.33	4 (12%)	48,52,52	1.84	8 (16%)
2	ATP	B	801	-	32,33,33	1.30	5 (15%)	48,52,52	1.74	9 (18%)
2	ATP	C	801	-	32,33,33	1.32	6 (18%)	48,52,52	1.82	7 (14%)
2	ATP	F	801	-	32,33,33	1.38	4 (12%)	48,52,52	1.93	8 (16%)
2	ATP	D	802	-	32,33,33	1.32	5 (15%)	48,52,52	1.80	10 (20%)
2	ATP	E	802	-	32,33,33	1.30	5 (15%)	48,52,52	1.83	8 (16%)
2	ATP	C	802	-	32,33,33	1.30	4 (12%)	48,52,52	1.73	7 (14%)
2	ATP	A	801	-	32,33,33	1.35	4 (12%)	48,52,52	1.78	8 (16%)

In the following table, the Chirals column lists the number of chiral outliers, the number of chiral centers analysed, the number of these observed in the model and the number defined in the Chemical Component Dictionary. Similar counts are reported in the Torsion and Rings columns. '-' means no outliers of that kind were identified.

Mol	Type	Chain	Res	Link	Chirals	Torsions	Rings
2	ATP	A	802	-	-	6/22/38/38	0/3/3/3
2	ATP	E	801	-	-	2/22/38/38	0/3/3/3
2	ATP	B	802	-	-	0/22/38/38	0/3/3/3
2	ATP	F	802	-	-	3/22/38/38	0/3/3/3
2	ATP	D	801	-	-	7/22/38/38	0/3/3/3
2	ATP	B	801	-	-	1/22/38/38	0/3/3/3
2	ATP	C	801	-	-	2/22/38/38	0/3/3/3
2	ATP	F	801	-	-	4/22/38/38	0/3/3/3
2	ATP	D	802	-	-	1/22/38/38	0/3/3/3
2	ATP	E	802	-	-	8/22/38/38	0/3/3/3
2	ATP	C	802	-	-	6/22/38/38	0/3/3/3
2	ATP	A	801	-	-	5/22/38/38	0/3/3/3

All (53) bond length outliers are listed below:

Mol	Chain	Res	Type	Atoms	Z	Observed(Å)	Ideal(Å)
2	F	801	ATP	C5-C4	4.71	1.47	1.39
2	A	801	ATP	C5-C4	4.65	1.47	1.39
2	F	802	ATP	C5-C4	4.59	1.47	1.39
2	E	801	ATP	C5-C4	4.52	1.47	1.39
2	E	802	ATP	C5-C4	4.49	1.47	1.39
2	A	802	ATP	C5-C4	4.46	1.47	1.39
2	D	801	ATP	C5-C4	4.38	1.46	1.39
2	B	802	ATP	C5-C4	4.37	1.46	1.39
2	D	802	ATP	C5-C4	4.33	1.46	1.39
2	C	802	ATP	C5-C4	4.29	1.46	1.39
2	C	801	ATP	C5-C4	4.26	1.46	1.39
2	B	801	ATP	C5-C4	4.09	1.46	1.39
2	C	801	ATP	C5-N7	-2.89	1.33	1.39
2	B	802	ATP	C5-N7	-2.80	1.34	1.39
2	D	801	ATP	C5-N7	-2.74	1.34	1.39
2	D	802	ATP	C5-N7	-2.73	1.34	1.39
2	E	801	ATP	C5-N7	-2.73	1.34	1.39
2	F	802	ATP	C5-N7	-2.73	1.34	1.39
2	F	801	ATP	C5-C6	2.72	1.48	1.41
2	C	802	ATP	C5-N7	-2.67	1.34	1.39
2	A	801	ATP	C5-C6	2.67	1.48	1.41
2	E	802	ATP	C5-N7	-2.65	1.34	1.39
2	A	802	ATP	C5-N7	-2.64	1.34	1.39
2	A	801	ATP	C5-N7	-2.60	1.34	1.39
2	B	801	ATP	C5-N7	-2.55	1.34	1.39
2	A	802	ATP	C5-C6	2.52	1.48	1.41
2	F	802	ATP	C5-C6	2.51	1.48	1.41
2	D	801	ATP	C5-C6	2.49	1.47	1.41
2	F	801	ATP	C5-N7	-2.48	1.34	1.39
2	B	801	ATP	C5-C6	2.47	1.47	1.41
2	C	802	ATP	C5-C6	2.45	1.47	1.41
2	D	802	ATP	C5-C6	2.40	1.47	1.41
2	E	802	ATP	C5-C6	2.38	1.47	1.41
2	C	801	ATP	C5-C6	2.31	1.47	1.41
2	D	802	ATP	C4-N9	-2.30	1.32	1.37
2	B	801	ATP	C4-N9	-2.28	1.32	1.37
2	B	802	ATP	C5-C6	2.28	1.47	1.41
2	C	802	ATP	C4-N9	-2.26	1.33	1.37
2	D	802	ATP	C8-N7	2.23	1.36	1.31
2	A	802	ATP	C8-N7	2.23	1.36	1.31
2	F	801	ATP	C8-N7	2.19	1.35	1.31
2	E	801	ATP	C5-C6	2.18	1.47	1.41
2	B	801	ATP	C8-N7	2.12	1.35	1.31

Continued on next page...

Continued from previous page...

Mol	Chain	Res	Type	Atoms	Z	Observed(Å)	Ideal(Å)
2	E	802	ATP	C8-N7	2.12	1.35	1.31
2	C	801	ATP	C8-N9	-2.11	1.34	1.37
2	B	802	ATP	C4-N9	-2.09	1.33	1.37
2	A	801	ATP	C8-N7	2.07	1.35	1.31
2	D	801	ATP	C8-N7	2.06	1.35	1.31
2	C	801	ATP	C4-N9	-2.06	1.33	1.37
2	C	801	ATP	C8-N7	2.04	1.35	1.31
2	F	802	ATP	C8-N7	2.02	1.35	1.31
2	E	802	ATP	C4-N9	-2.01	1.33	1.37
2	B	802	ATP	C8-N7	2.01	1.35	1.31

All (97) bond angle outliers are listed below:

Mol	Chain	Res	Type	Atoms	Z	Observed(°)	Ideal(°)
2	F	801	ATP	C5-C4-N3	-6.97	117.12	126.72
2	C	801	ATP	C5-C4-N3	-6.59	117.64	126.72
2	F	802	ATP	C5-C4-N3	-6.50	117.76	126.72
2	D	801	ATP	C5-C4-N3	-6.48	117.80	126.72
2	E	801	ATP	C5-C4-N3	-6.48	117.80	126.72
2	A	802	ATP	C5-C4-N3	-6.18	118.21	126.72
2	B	802	ATP	C5-C4-N3	-6.08	118.34	126.72
2	A	801	ATP	C5-C4-N3	-6.03	118.42	126.72
2	D	802	ATP	C5-C4-N3	-5.94	118.53	126.72
2	E	802	ATP	C5-C4-N3	-5.90	118.60	126.72
2	C	802	ATP	C5-C4-N3	-5.83	118.69	126.72
2	B	801	ATP	C5-C4-N3	-5.75	118.80	126.72
2	F	801	ATP	N3-C4-N9	5.73	136.90	127.17
2	E	801	ATP	N3-C4-N9	5.57	136.65	127.17
2	C	801	ATP	N3-C4-N9	5.35	136.27	127.17
2	F	802	ATP	N3-C4-N9	5.24	136.09	127.17
2	D	801	ATP	N3-C4-N9	5.15	135.92	127.17
2	B	802	ATP	N3-C4-N9	5.07	135.79	127.17
2	A	802	ATP	N3-C4-N9	4.89	135.48	127.17
2	A	801	ATP	N3-C4-N9	4.86	135.43	127.17
2	E	802	ATP	N3-C4-N9	4.78	135.30	127.17
2	C	802	ATP	N3-C4-N9	4.71	135.18	127.17
2	D	802	ATP	N3-C4-N9	4.52	134.85	127.17
2	B	801	ATP	N3-C4-N9	4.51	134.84	127.17
2	F	801	ATP	C2-N3-C4	4.20	122.10	111.83
2	C	801	ATP	C2-N3-C4	3.93	121.42	111.83
2	D	801	ATP	C2-N3-C4	3.91	121.39	111.83
2	E	801	ATP	C2-N3-C4	3.82	121.16	111.83

Continued on next page...

Continued from previous page...

Mol	Chain	Res	Type	Atoms	Z	Observed(°)	Ideal(°)
2	D	802	ATP	C4-C5-N7	-3.75	106.29	110.58
2	F	802	ATP	C2-N3-C4	3.75	120.99	111.83
2	A	802	ATP	C2-N3-C4	3.71	120.88	111.83
2	A	801	ATP	C2-N3-C4	3.65	120.75	111.83
2	C	802	ATP	C2-N3-C4	3.64	120.72	111.83
2	B	801	ATP	C2-N3-C4	3.64	120.71	111.83
2	D	802	ATP	C2-N3-C4	3.60	120.63	111.83
2	E	802	ATP	C2-N3-C4	3.60	120.61	111.83
2	B	802	ATP	C2-N3-C4	3.55	120.51	111.83
2	F	801	ATP	C4-C5-N7	-3.48	106.61	110.58
2	F	801	ATP	N3-C2-N1	-3.44	123.37	128.58
2	E	802	ATP	O4'-C1'-N9	3.41	114.63	108.09
2	D	801	ATP	C4-C5-N7	-3.39	106.70	110.58
2	E	801	ATP	N3-C2-N1	-3.39	123.45	128.58
2	B	801	ATP	C4-C5-N7	-3.38	106.72	110.58
2	A	802	ATP	C4-C5-N7	-3.33	106.77	110.58
2	A	801	ATP	C4-C5-N7	-3.32	106.79	110.58
2	F	802	ATP	C4-C5-N7	-3.31	106.80	110.58
2	C	801	ATP	N3-C2-N1	-3.22	123.71	128.58
2	C	802	ATP	C4-C5-N7	-3.17	106.95	110.58
2	D	801	ATP	N3-C2-N1	-3.17	123.79	128.58
2	C	801	ATP	C4-C5-N7	-3.15	106.98	110.58
2	B	801	ATP	N3-C2-N1	-3.09	123.91	128.58
2	C	802	ATP	N3-C2-N1	-3.09	123.91	128.58
2	D	802	ATP	N3-C2-N1	-3.06	123.96	128.58
2	E	802	ATP	C4-C5-N7	-3.06	107.09	110.58
2	B	802	ATP	C4-C5-N7	-3.02	107.13	110.58
2	E	802	ATP	N3-C2-N1	-3.00	124.04	128.58
2	A	802	ATP	N3-C2-N1	-2.95	124.12	128.58
2	A	801	ATP	N3-C2-N1	-2.92	124.16	128.58
2	B	802	ATP	N3-C2-N1	-2.89	124.21	128.58
2	F	802	ATP	N3-C2-N1	-2.83	124.30	128.58
2	E	801	ATP	C3'-C2'-C1'	2.83	106.81	101.46
2	B	801	ATP	C4-N9-C8	2.80	108.67	105.74
2	F	801	ATP	C5-N7-C8	2.79	107.83	103.45
2	F	801	ATP	C3'-C2'-C1'	2.78	106.72	101.46
2	E	801	ATP	C4-C5-N7	-2.75	107.44	110.58
2	B	802	ATP	C4-N9-C8	2.74	108.61	105.74
2	D	802	ATP	C4-N9-C8	2.69	108.57	105.74
2	D	802	ATP	C5-N7-C8	2.68	107.67	103.45
2	C	802	ATP	C4-N9-C8	2.63	108.50	105.74
2	E	801	ATP	C4-N9-C8	2.55	108.42	105.74

Continued on next page...

Continued from previous page...

Mol	Chain	Res	Type	Atoms	Z	Observed(°)	Ideal(°)
2	A	801	ATP	C3'-C2'-C1'	2.55	106.28	101.46
2	C	801	ATP	C4-N9-C8	2.50	108.36	105.74
2	D	801	ATP	C5-N7-C8	2.49	107.37	103.45
2	F	802	ATP	C5-N7-C8	2.49	107.36	103.45
2	A	802	ATP	C4-N9-C8	2.48	108.34	105.74
2	A	802	ATP	C5-N7-C8	2.47	107.34	103.45
2	F	801	ATP	C4-N9-C8	2.44	108.30	105.74
2	B	801	ATP	C5-N7-C8	2.44	107.29	103.45
2	E	802	ATP	C4-N9-C8	2.43	108.29	105.74
2	A	801	ATP	C5-N7-C8	2.39	107.21	103.45
2	A	801	ATP	C4-N9-C8	2.39	108.24	105.74
2	F	802	ATP	C4-N9-C8	2.37	108.22	105.74
2	B	802	ATP	C5-N7-C8	2.34	107.12	103.45
2	C	801	ATP	C5-N7-C8	2.33	107.11	103.45
2	C	802	ATP	C5-N7-C8	2.31	107.09	103.45
2	D	801	ATP	C4-N9-C8	2.28	108.13	105.74
2	E	802	ATP	C5-N7-C8	2.23	106.96	103.45
2	D	802	ATP	N9-C8-N7	-2.17	110.85	113.94
2	B	801	ATP	C3'-C2'-C1'	2.17	105.56	101.46
2	A	802	ATP	C3'-C2'-C1'	2.14	105.51	101.46
2	E	801	ATP	C5-N7-C8	2.13	106.79	103.45
2	D	801	ATP	C3'-C2'-C1'	2.13	105.48	101.46
2	B	801	ATP	N9-C8-N7	-2.10	110.95	113.94
2	B	802	ATP	O4'-C1'-N9	2.07	112.07	108.09
2	D	802	ATP	C3'-C2'-C1'	2.03	105.31	101.46
2	D	802	ATP	O3G-PG-O2G	2.03	115.43	107.80
2	E	801	ATP	C2-N1-C6	2.02	122.05	118.73

There are no chirality outliers.

All (45) torsion outliers are listed below:

Mol	Chain	Res	Type	Atoms
2	C	801	ATP	O4'-C4'-C5'-O5'
2	C	802	ATP	C5'-O5'-PA-O1A
2	C	802	ATP	C5'-O5'-PA-O3A
2	D	801	ATP	C5'-O5'-PA-O1A
2	D	801	ATP	C5'-O5'-PA-O2A
2	D	801	ATP	C5'-O5'-PA-O3A
2	D	801	ATP	O4'-C4'-C5'-O5'
2	E	801	ATP	O4'-C4'-C5'-O5'
2	E	802	ATP	C5'-O5'-PA-O2A
2	E	802	ATP	C5'-O5'-PA-O3A

Continued on next page...

Continued from previous page...

Mol	Chain	Res	Type	Atoms
2	E	802	ATP	O4'-C1'-N9-C8
2	E	802	ATP	O4'-C1'-N9-C4
2	F	801	ATP	C5'-O5'-PA-O1A
2	A	801	ATP	C5'-O5'-PA-O1A
2	A	802	ATP	C5'-O5'-PA-O1A
2	A	802	ATP	C5'-O5'-PA-O3A
2	C	801	ATP	C3'-C4'-C5'-O5'
2	D	801	ATP	C3'-C4'-C5'-O5'
2	E	801	ATP	C3'-C4'-C5'-O5'
2	F	801	ATP	C3'-C4'-C5'-O5'
2	F	801	ATP	O4'-C4'-C5'-O5'
2	C	802	ATP	O4'-C4'-C5'-O5'
2	A	802	ATP	O4'-C4'-C5'-O5'
2	C	802	ATP	PA-O3A-PB-O2B
2	D	801	ATP	PG-O3B-PB-O1B
2	A	801	ATP	PA-O3A-PB-O1B
2	A	802	ATP	PA-O3A-PB-O1B
2	C	802	ATP	C5'-O5'-PA-O2A
2	E	802	ATP	C5'-O5'-PA-O1A
2	F	801	ATP	C5'-O5'-PA-O3A
2	A	801	ATP	C5'-O5'-PA-O3A
2	A	802	ATP	C5'-O5'-PA-O2A
2	E	802	ATP	C3'-C4'-C5'-O5'
2	C	802	ATP	PA-O3A-PB-O1B
2	F	802	ATP	PA-O3A-PB-O1B
2	F	802	ATP	PA-O3A-PB-O2B
2	D	802	ATP	O4'-C4'-C5'-O5'
2	E	802	ATP	O4'-C4'-C5'-O5'
2	A	801	ATP	PA-O3A-PB-O2B
2	A	802	ATP	PA-O3A-PB-O2B
2	F	802	ATP	O4'-C1'-N9-C8
2	B	801	ATP	PG-O3B-PB-O1B
2	D	801	ATP	PG-O3B-PB-O2B
2	E	802	ATP	PA-O3A-PB-O1B
2	A	801	ATP	PG-O3B-PB-O1B

There are no ring outliers.

9 monomers are involved in 21 short contacts:

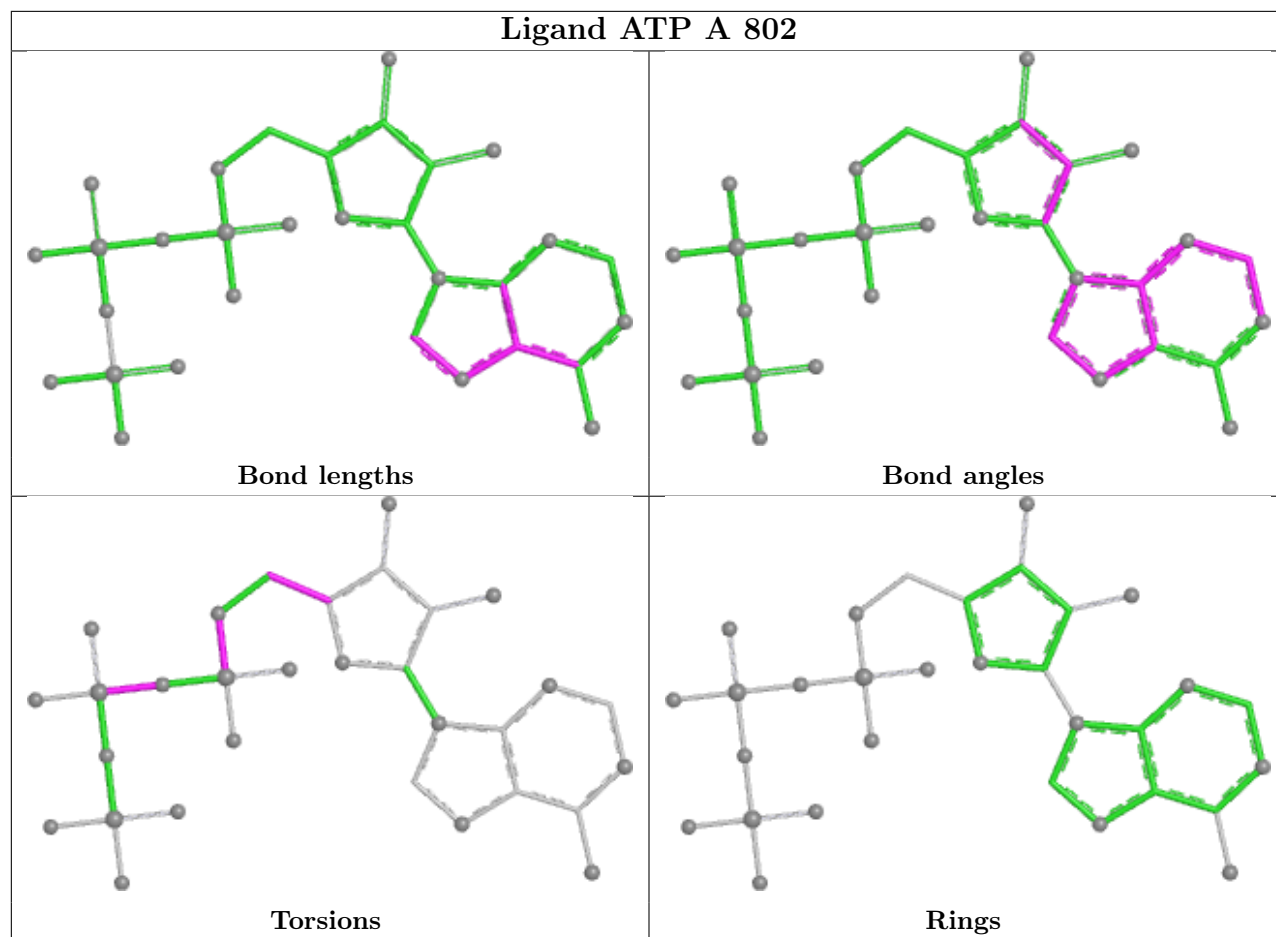
Mol	Chain	Res	Type	Clashes	Symm-Clashes
2	A	802	ATP	1	0
2	E	801	ATP	1	0

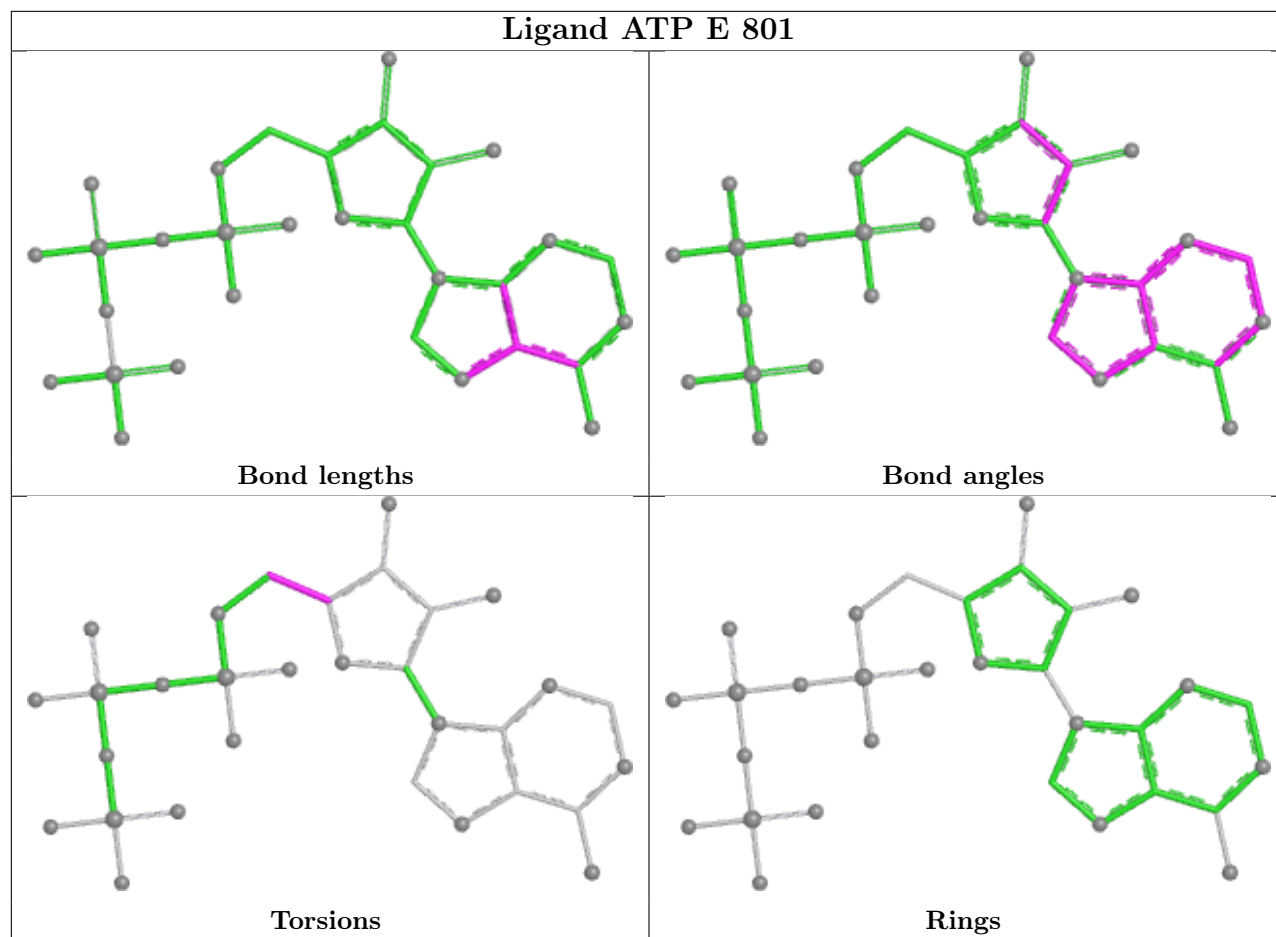
Continued on next page...

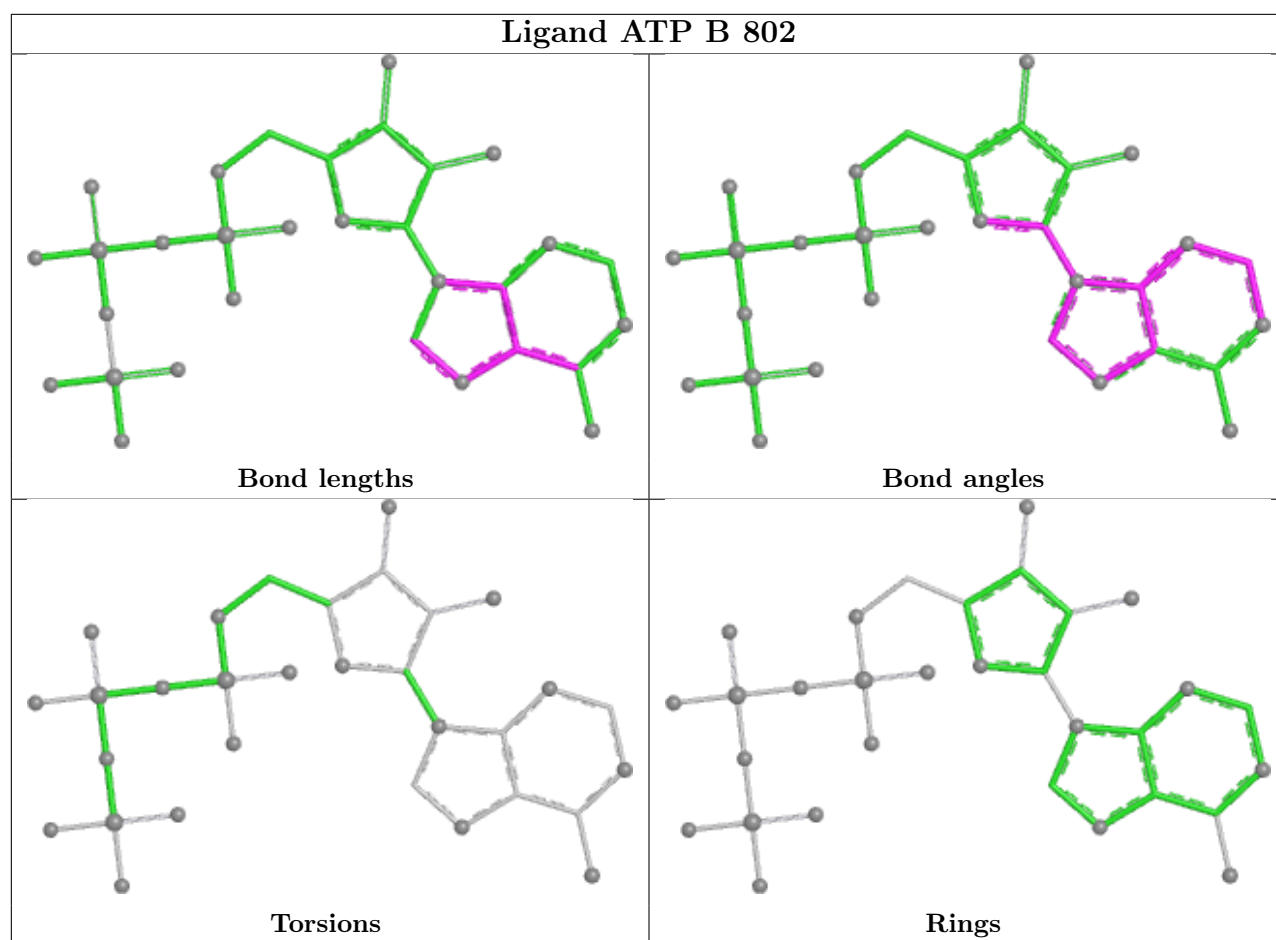
Continued from previous page...

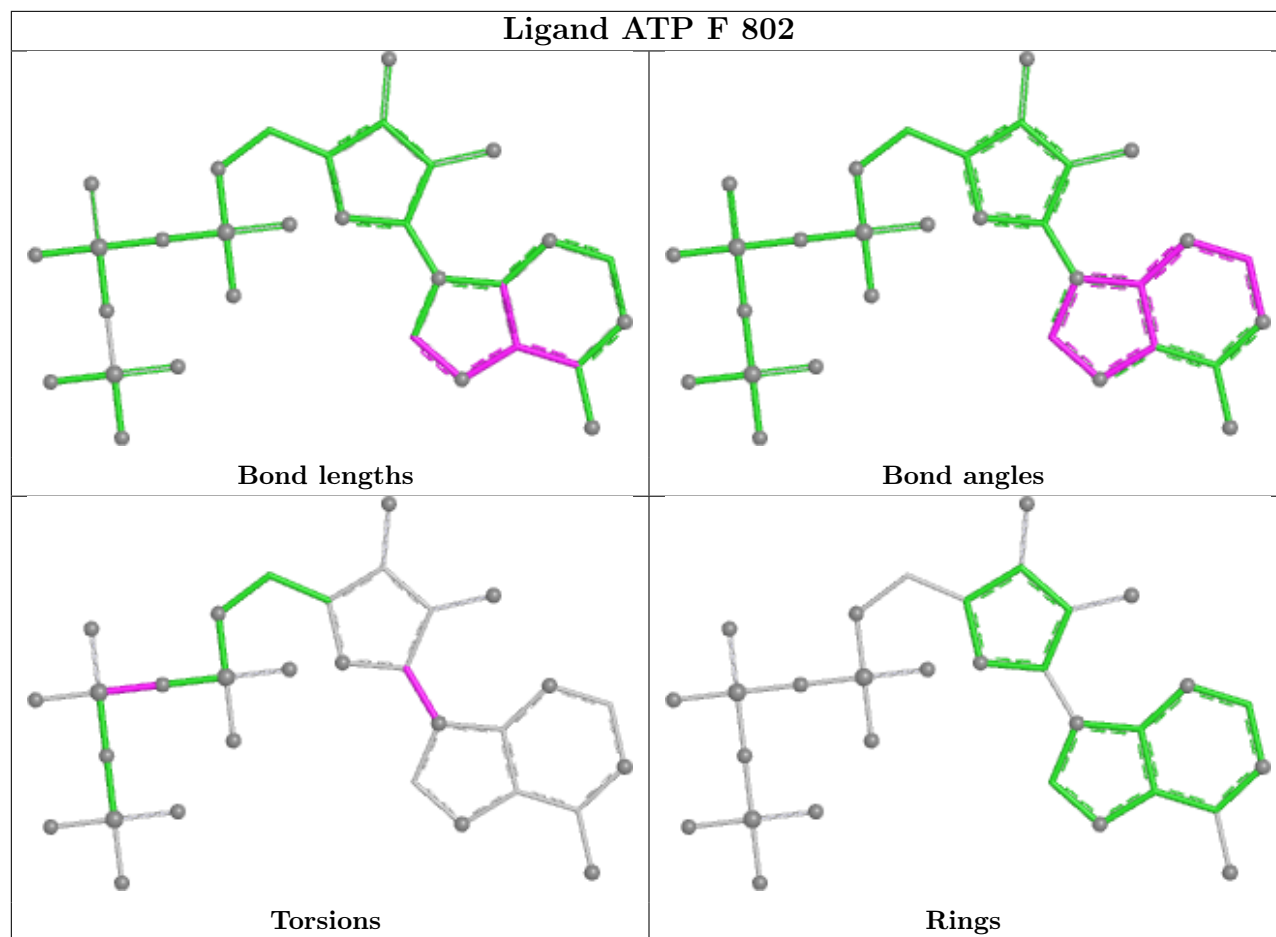
Mol	Chain	Res	Type	Clashes	Symm-Clashes
2	B	802	ATP	1	0
2	F	802	ATP	2	0
2	D	801	ATP	4	0
2	C	801	ATP	4	0
2	F	801	ATP	1	0
2	E	802	ATP	2	0
2	C	802	ATP	5	0

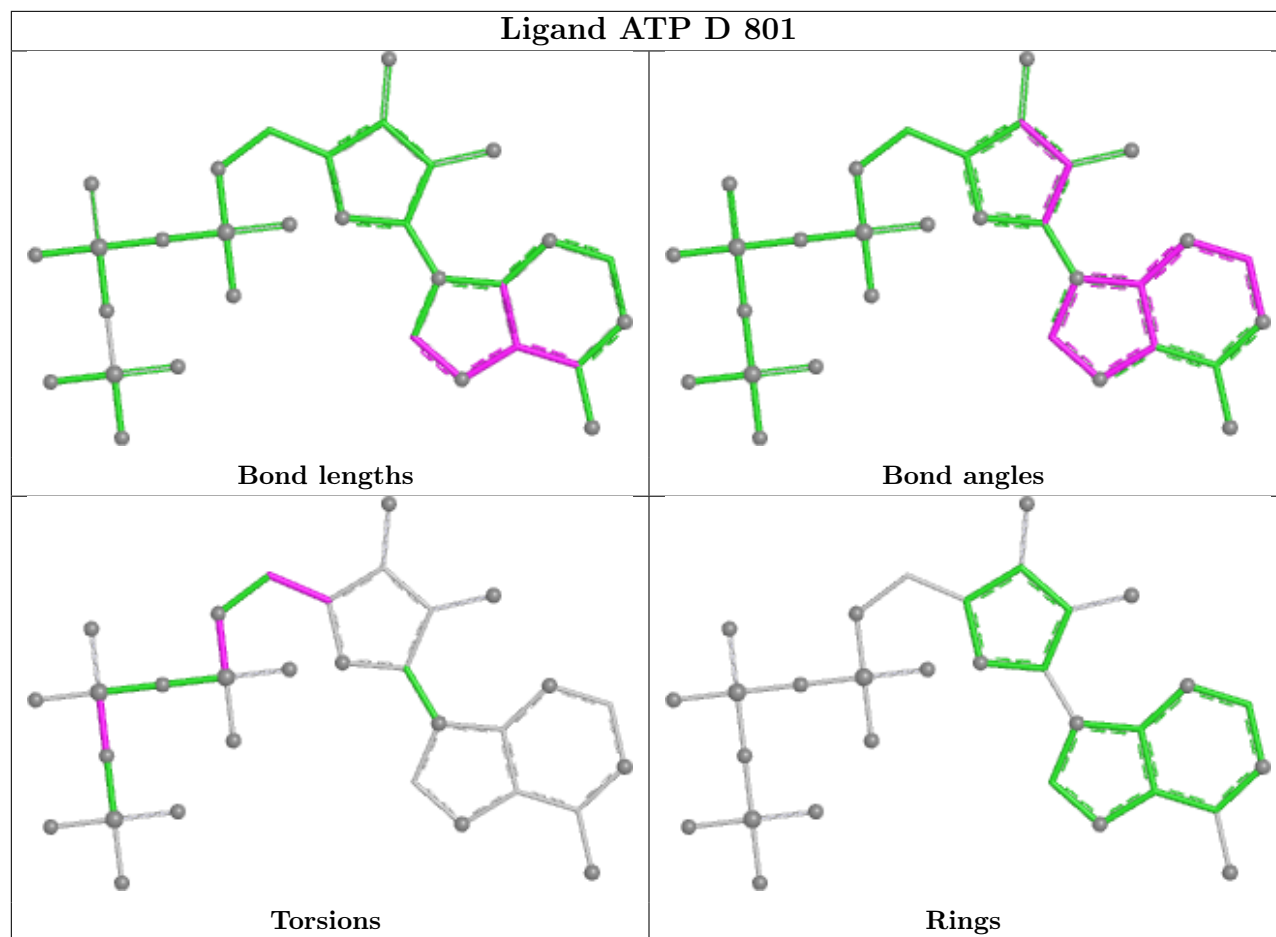
The following is a two-dimensional graphical depiction of Mogul quality analysis of bond lengths, bond angles, torsion angles, and ring geometry for all instances of the Ligand of Interest. In addition, ligands with molecular weight > 250 and outliers as shown on the validation Tables will also be included. For torsion angles, if less than 5% of the Mogul distribution of torsion angles is within 10 degrees of the torsion angle in question, then that torsion angle is considered an outlier. Any bond that is central to one or more torsion angles identified as an outlier by Mogul will be highlighted in the graph. For rings, the root-mean-square deviation (RMSD) between the ring in question and similar rings identified by Mogul is calculated over all ring torsion angles. If the average RMSD is greater than 60 degrees and the minimal RMSD between the ring in question and any Mogul-identified rings is also greater than 60 degrees, then that ring is considered an outlier. The outliers are highlighted in purple. The color gray indicates Mogul did not find sufficient equivalents in the CSD to analyse the geometry.

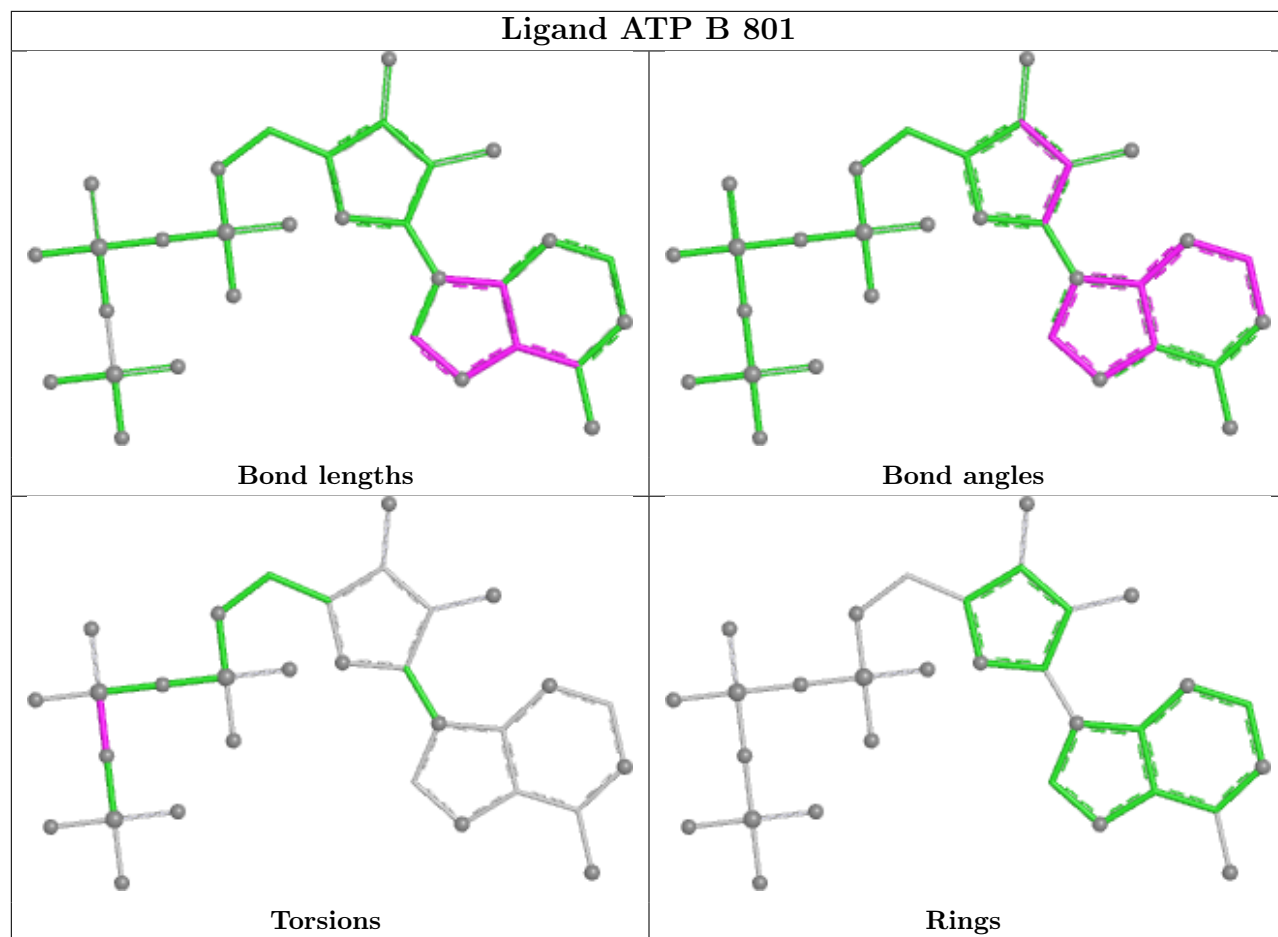


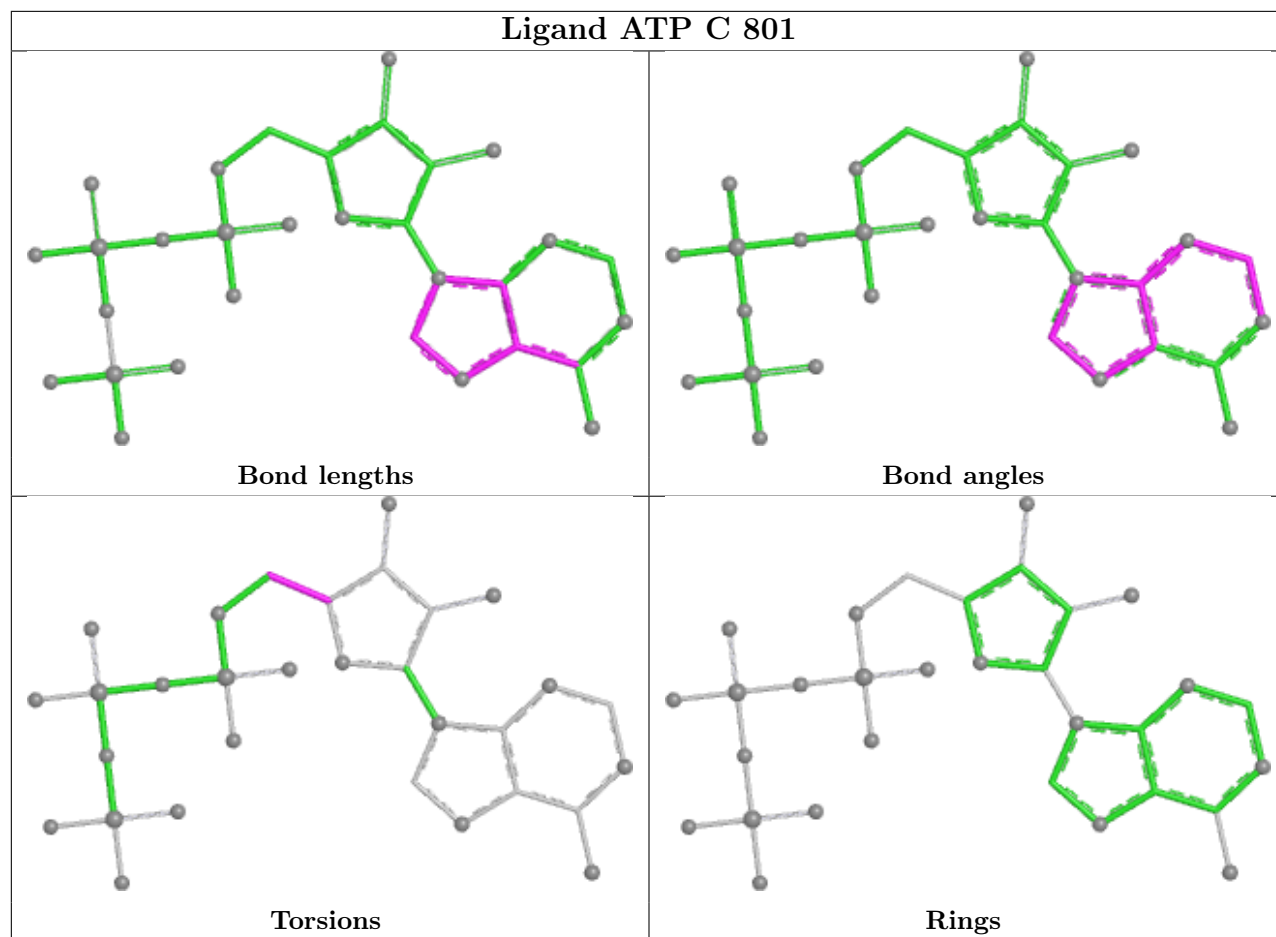


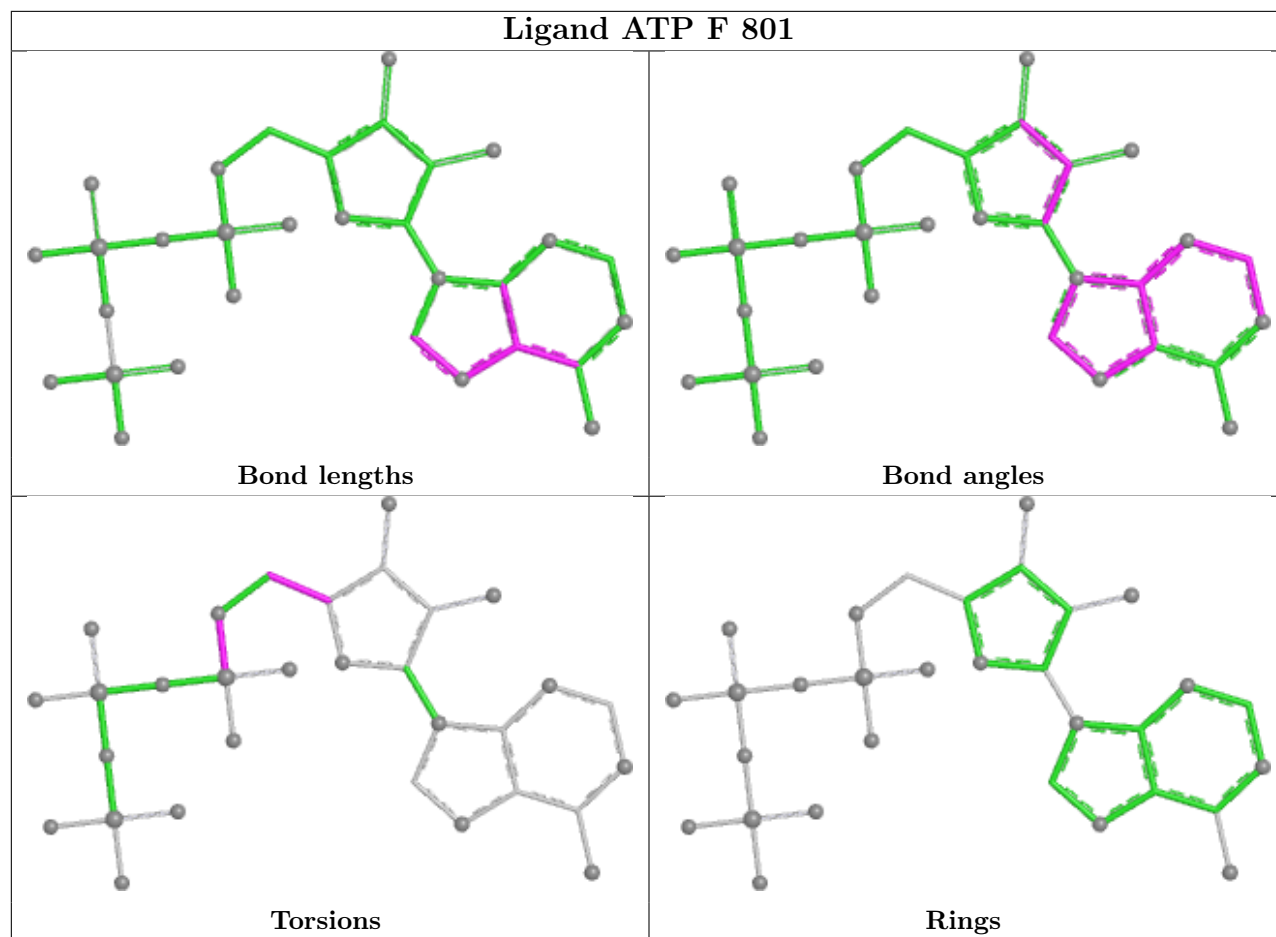


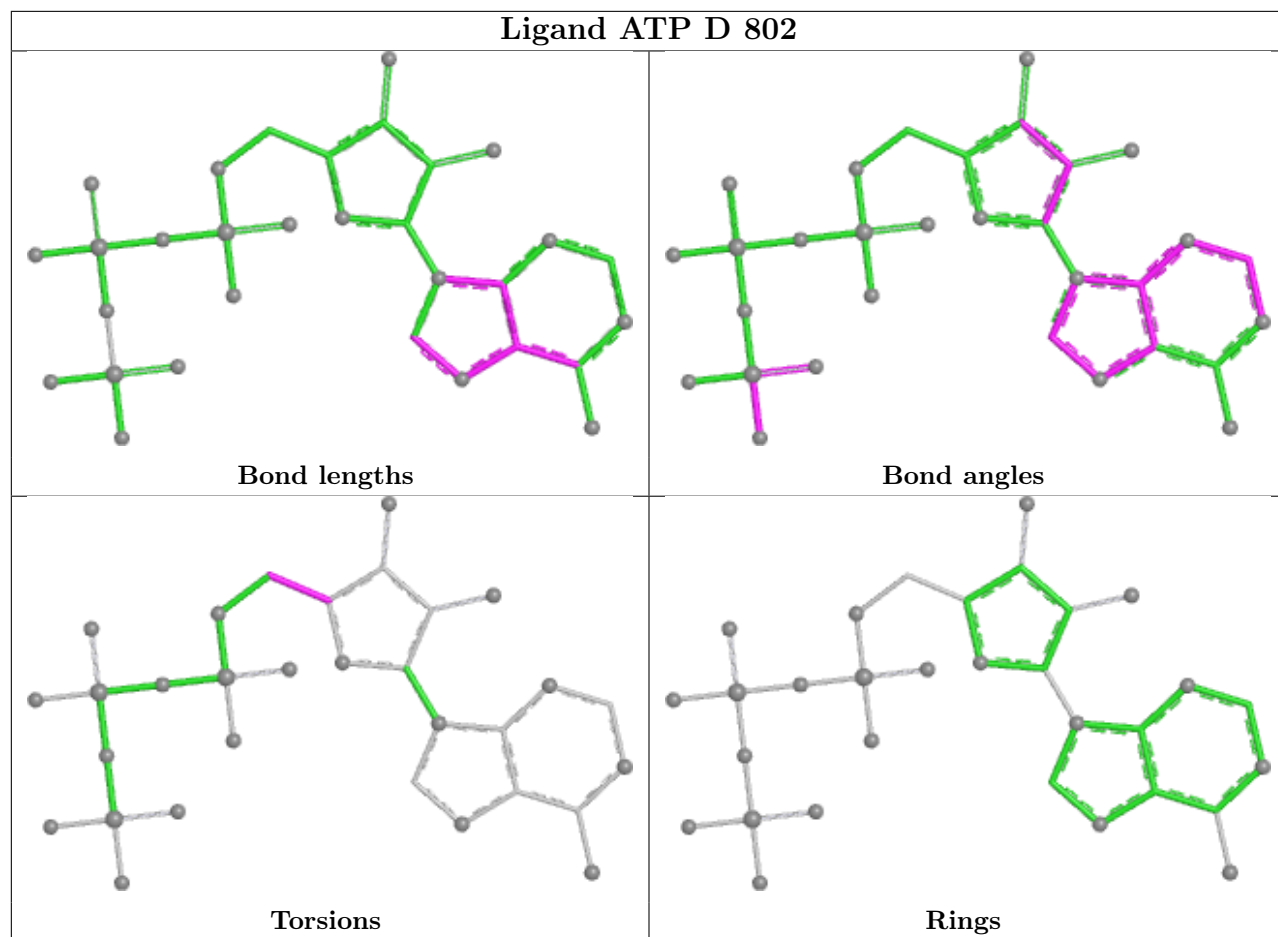


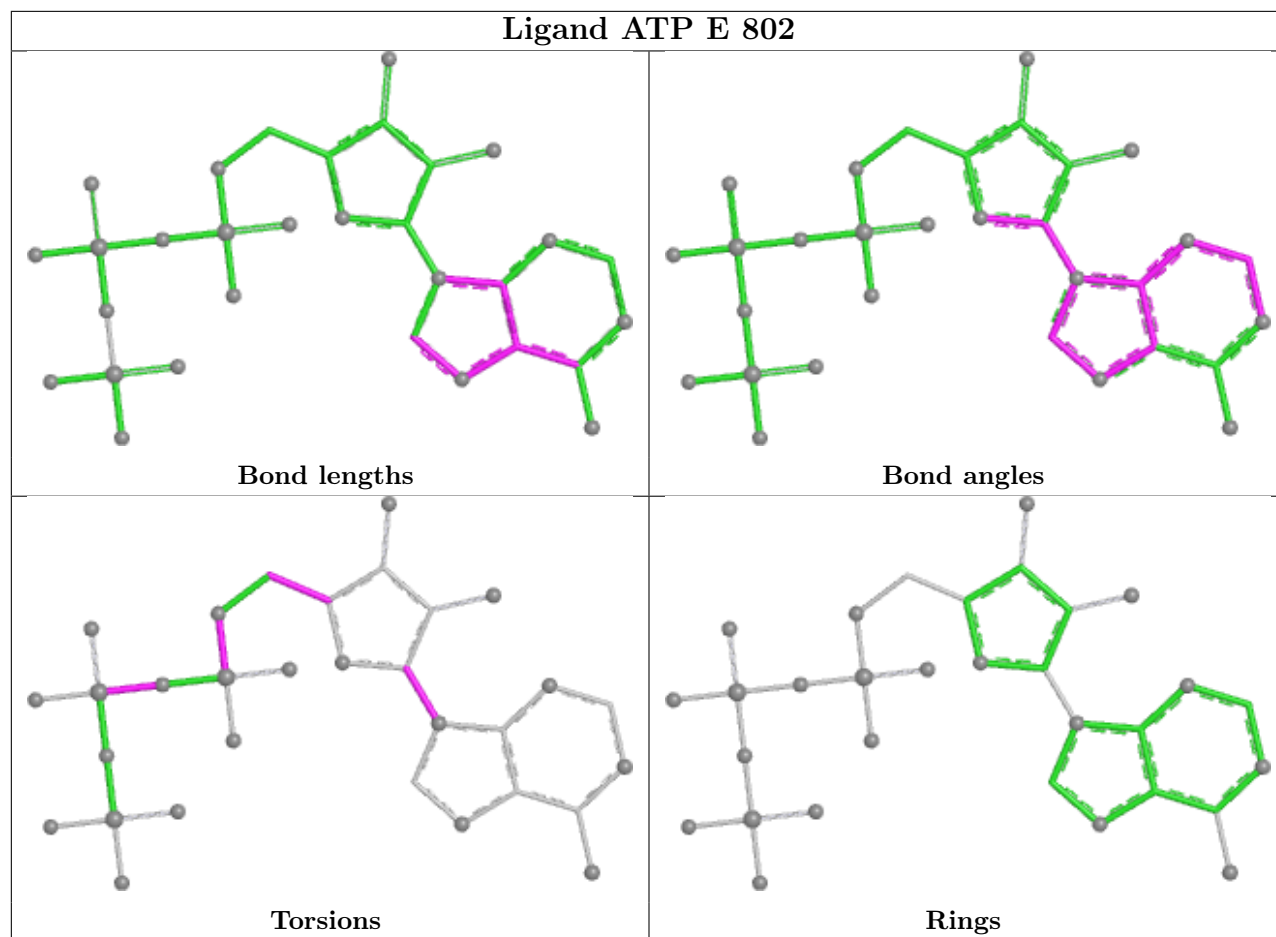


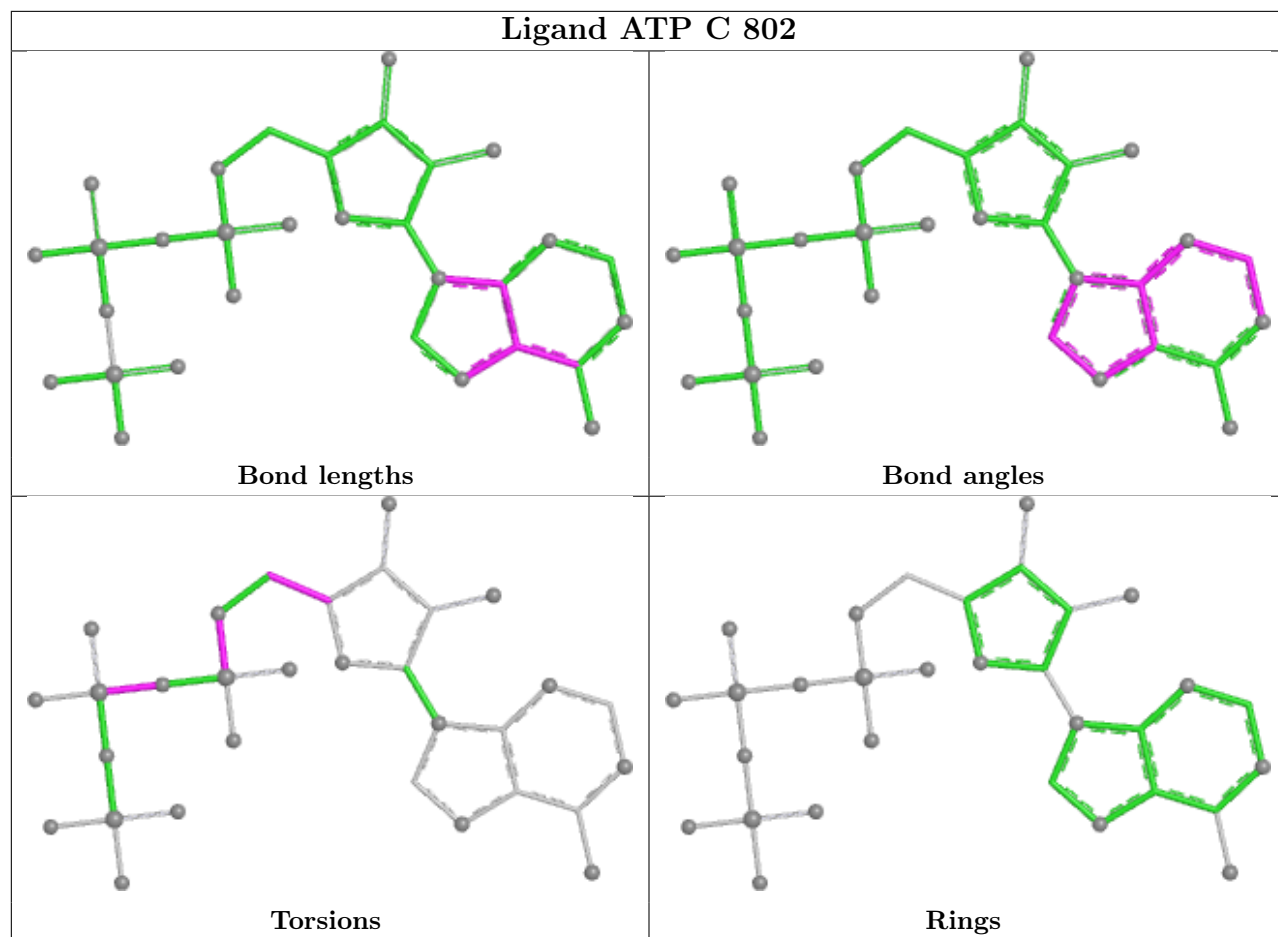


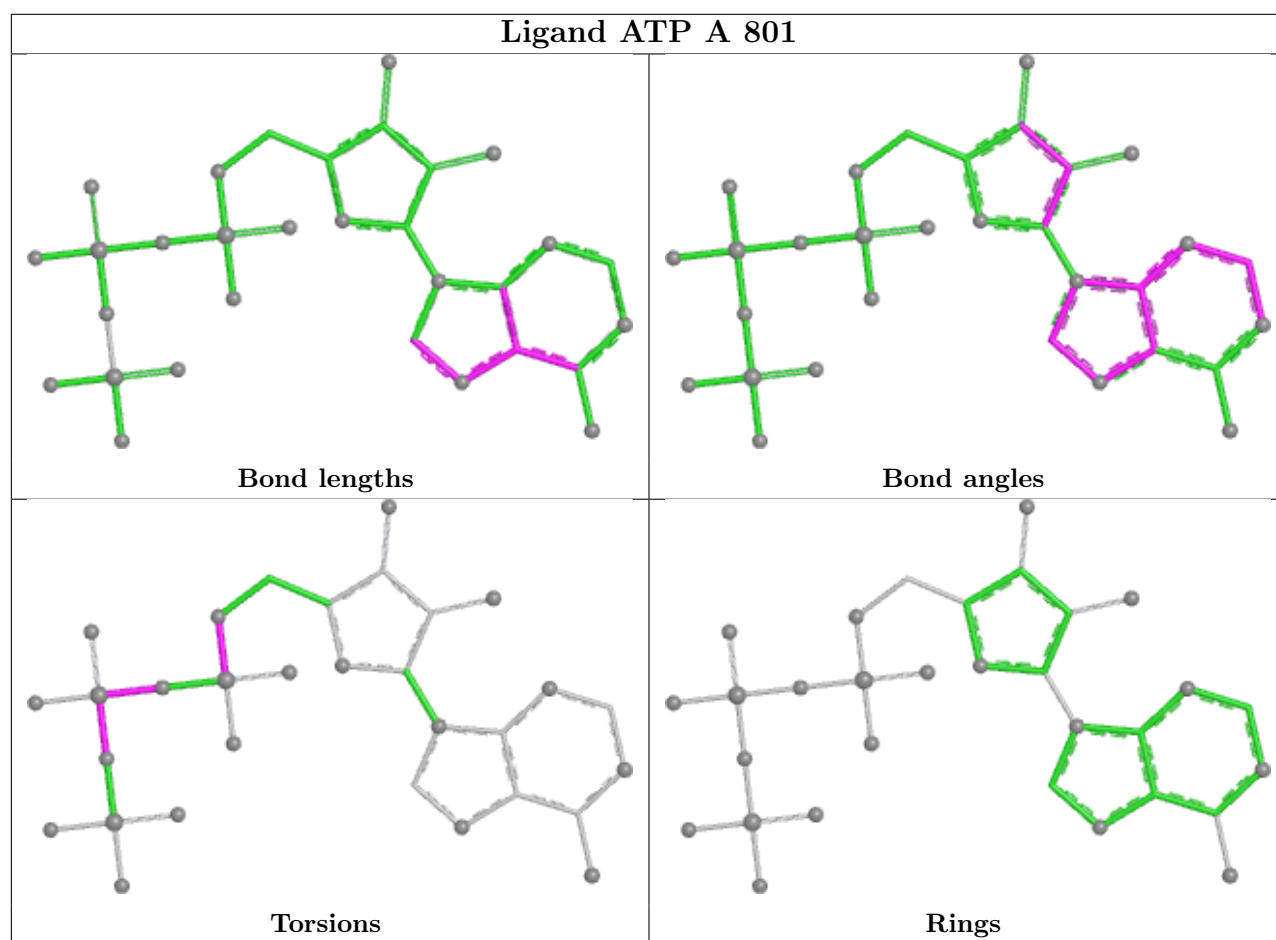












5.7 Other polymers [i](#)

There are no such residues in this entry.

5.8 Polymer linkage issues [i](#)

There are no chain breaks in this entry.

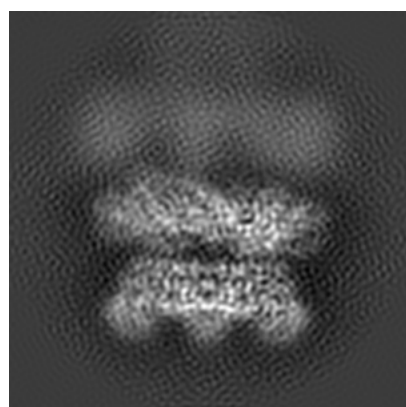
6 Map visualisation [i](#)

This section contains visualisations of the EMDB entry EMD-9698. These allow visual inspection of the internal detail of the map and identification of artifacts.

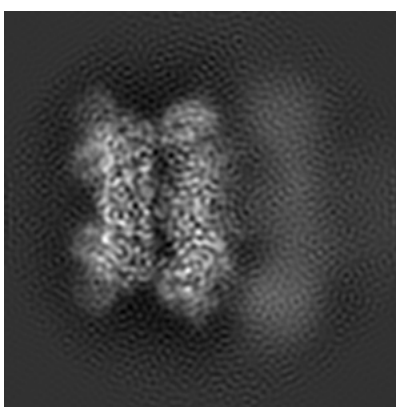
No raw map or half-maps were deposited for this entry and therefore no images, graphs, etc. pertaining to the raw map can be shown.

6.1 Orthogonal projections [i](#)

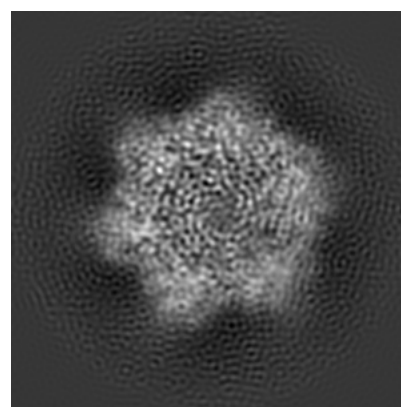
6.1.1 Primary map



X



Y

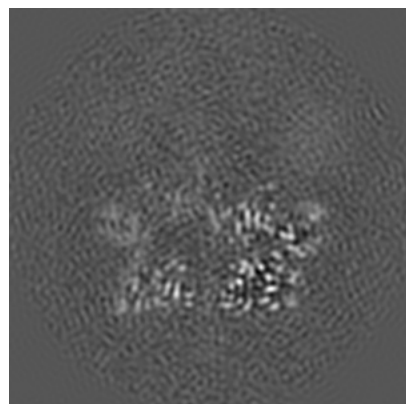


Z

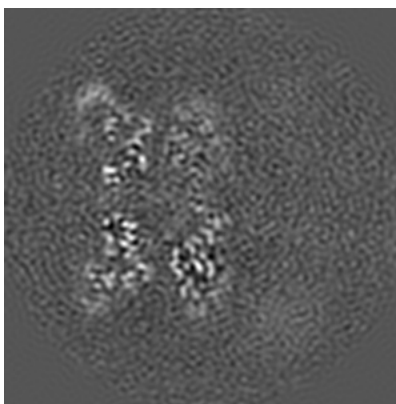
The images above show the map projected in three orthogonal directions.

6.2 Central slices [i](#)

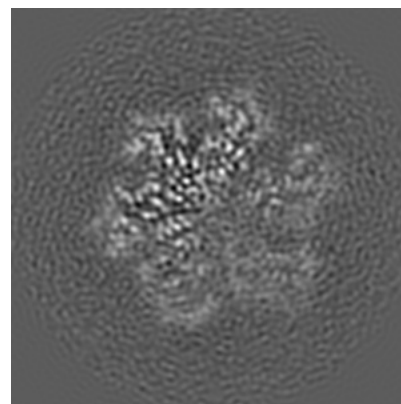
6.2.1 Primary map



X Index: 80



Y Index: 80

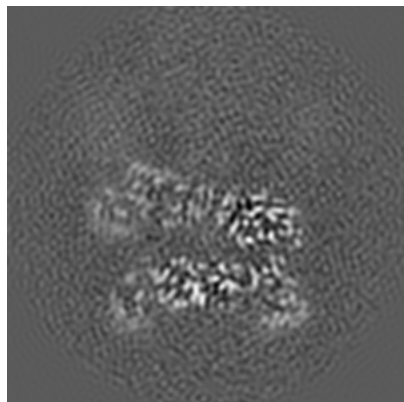


Z Index: 80

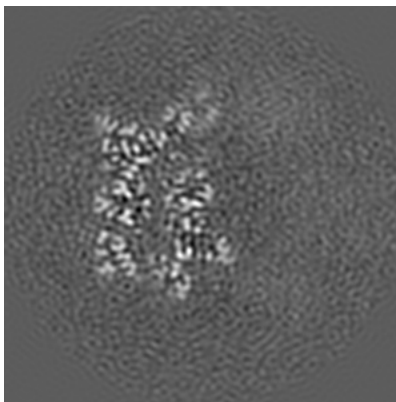
The images above show central slices of the map in three orthogonal directions.

6.3 Largest variance slices [\(i\)](#)

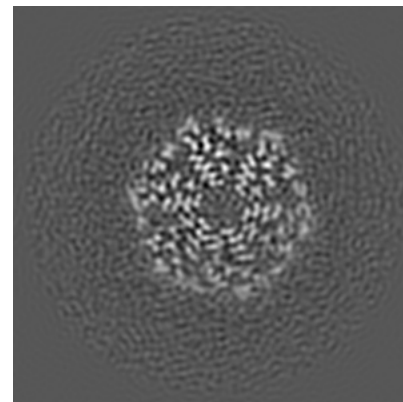
6.3.1 Primary map



X Index: 71



Y Index: 95

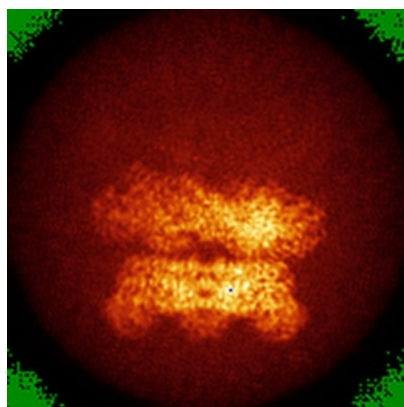


Z Index: 49

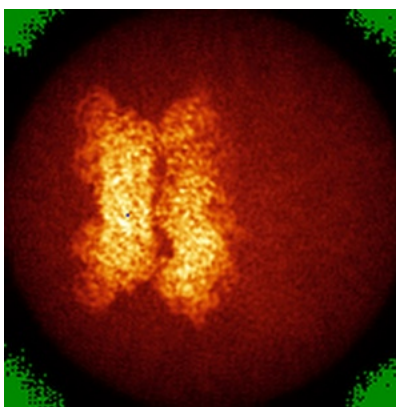
The images above show the largest variance slices of the map in three orthogonal directions.

6.4 Orthogonal standard-deviation projections (False-color) [\(i\)](#)

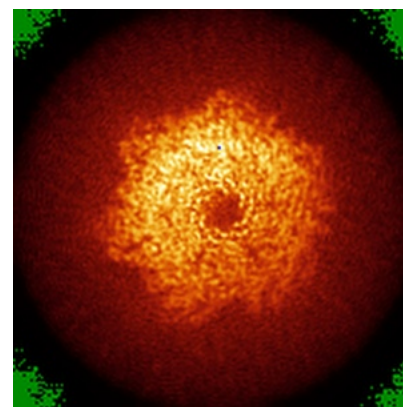
6.4.1 Primary map



X



Y

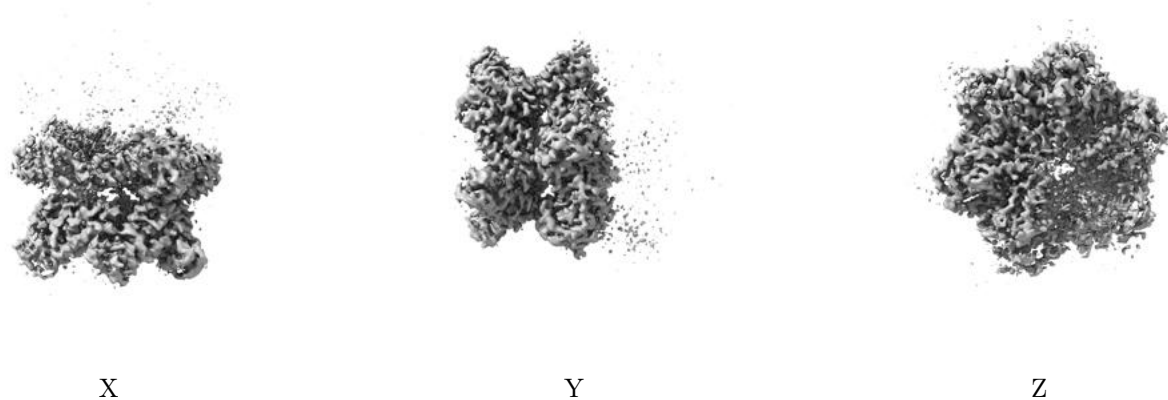


Z

The images above show the map standard deviation projections with false color in three orthogonal directions. Minimum values are shown in green, max in blue, and dark to light orange shades represent small to large values respectively.

6.5 Orthogonal surface views [i](#)

6.5.1 Primary map



The images above show the 3D surface view of the map at the recommended contour level 0.062. These images, in conjunction with the slice images, may facilitate assessment of whether an appropriate contour level has been provided.

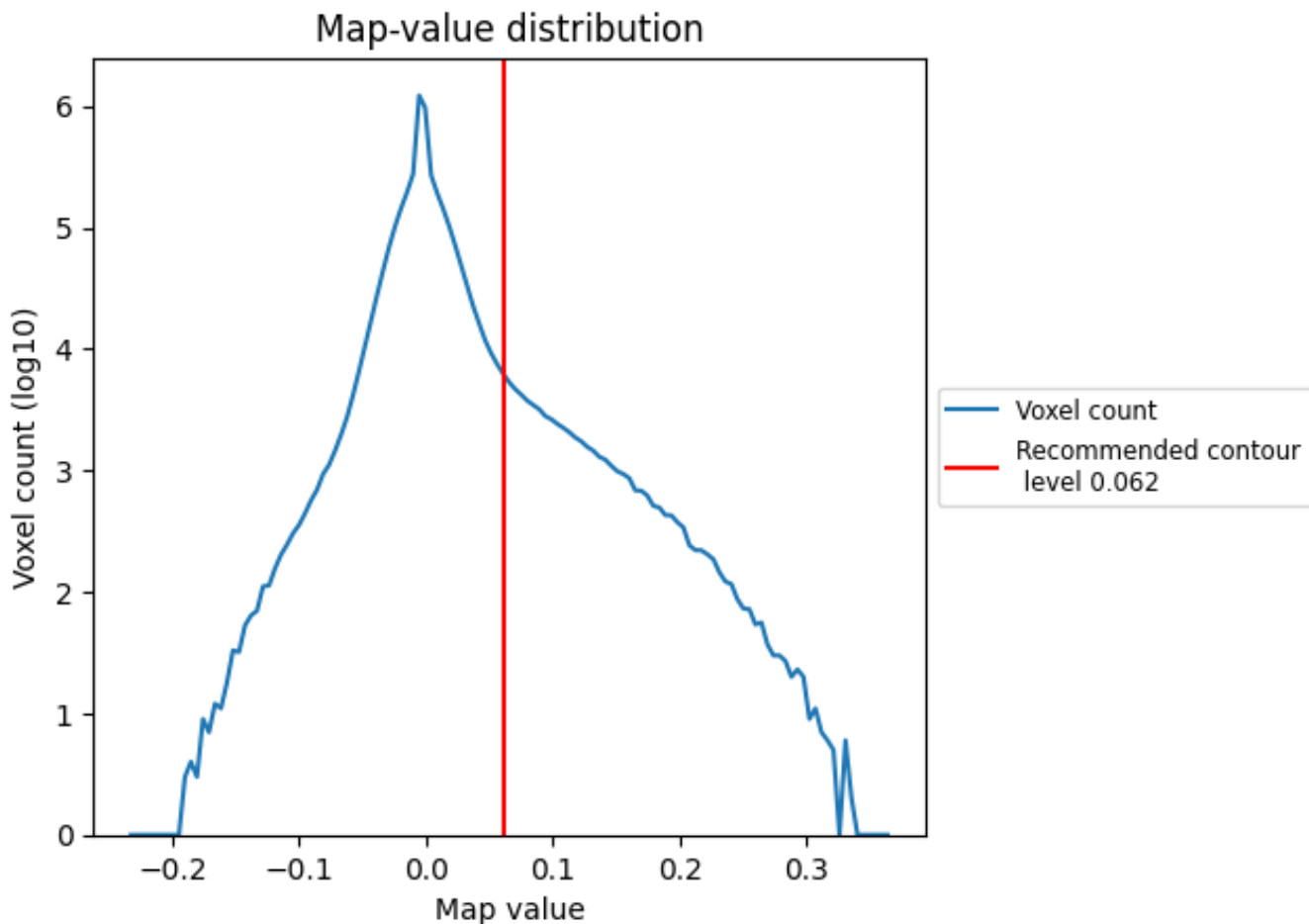
6.6 Mask visualisation [i](#)

This section was not generated. No masks/segmentation were deposited.

7 Map analysis [i](#)

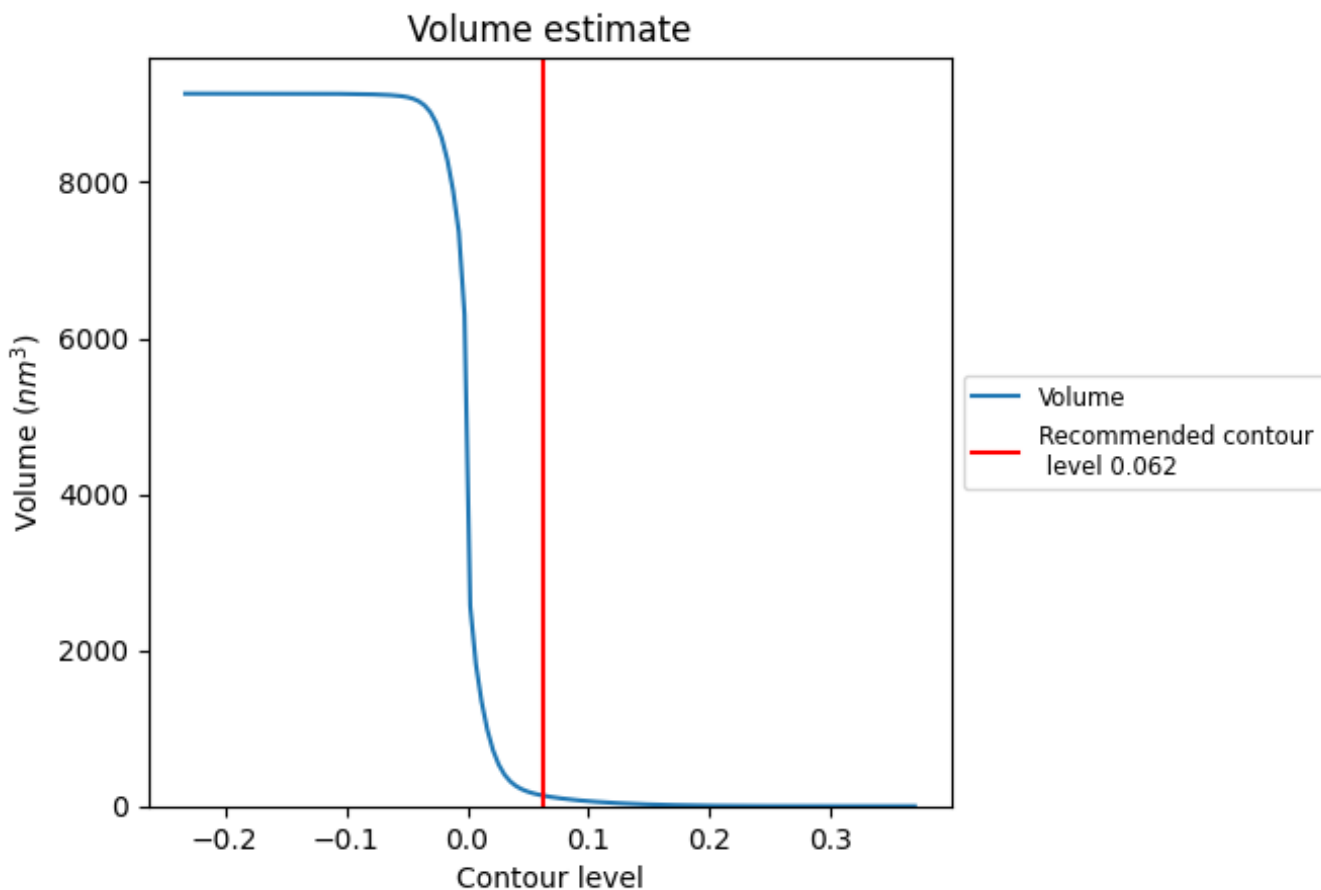
This section contains the results of statistical analysis of the map.

7.1 Map-value distribution [i](#)



The map-value distribution is plotted in 128 intervals along the x-axis. The y-axis is logarithmic. A spike in this graph at zero usually indicates that the volume has been masked.

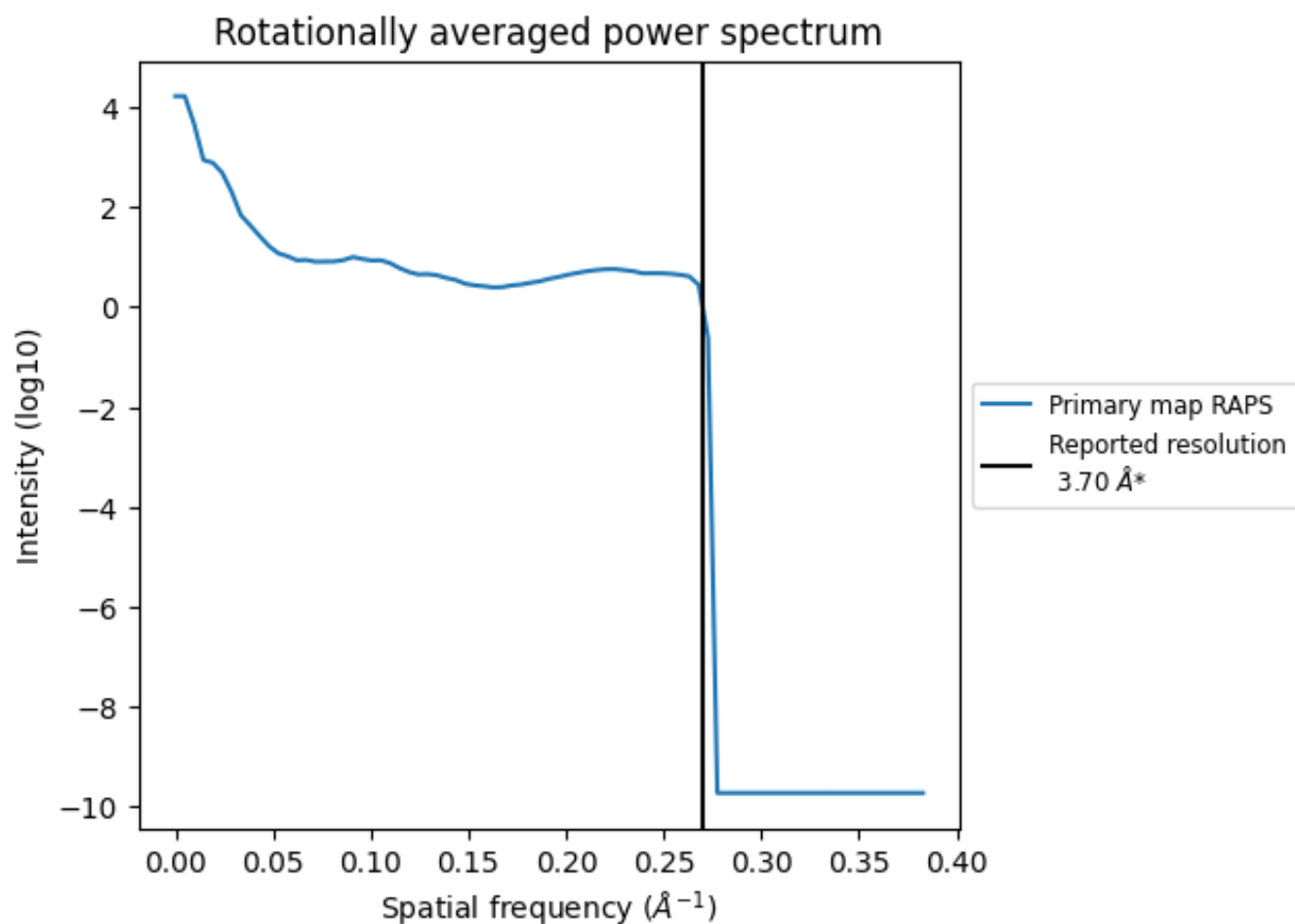
7.2 Volume estimate [i](#)



The volume at the recommended contour level is 137 nm^3 ; this corresponds to an approximate mass of 124 kDa.

The volume estimate graph shows how the enclosed volume varies with the contour level. The recommended contour level is shown as a vertical line and the intersection between the line and the curve gives the volume of the enclosed surface at the given level.

7.3 Rotationally averaged power spectrum [\(i\)](#)



*Reported resolution corresponds to spatial frequency of 0.270 Å⁻¹

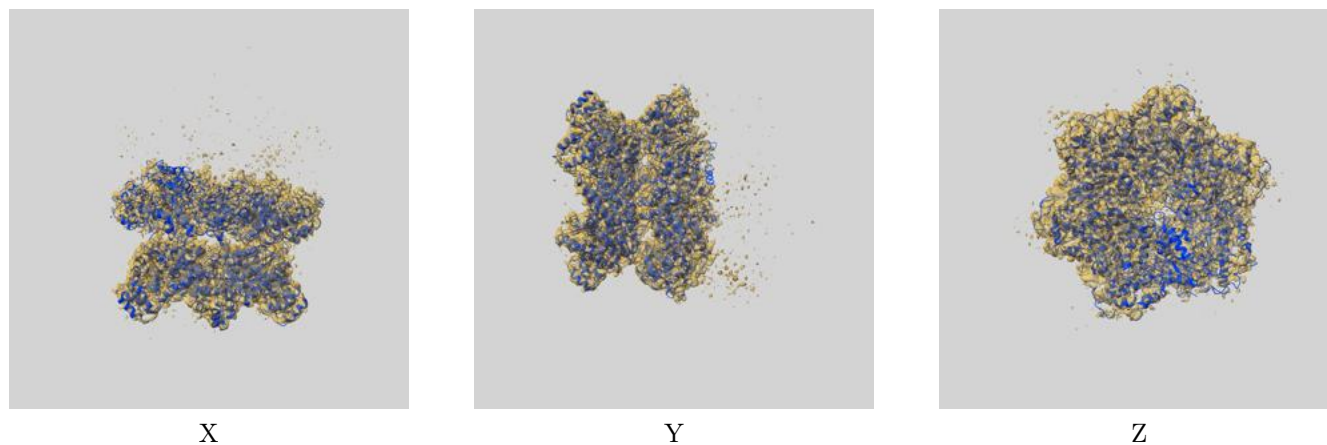
8 Fourier-Shell correlation

This section was not generated. No FSC curve or half-maps provided.

9 Map-model fit [i](#)

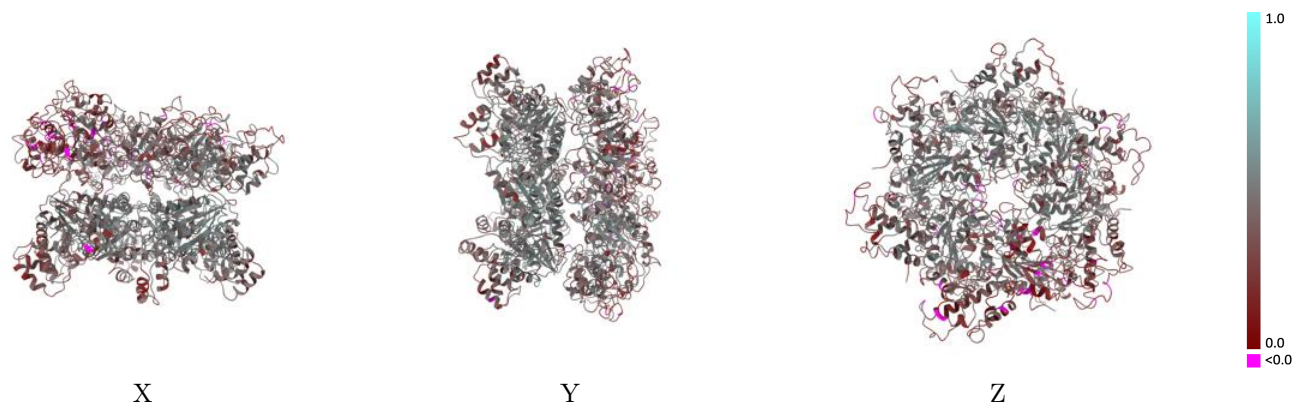
This section contains information regarding the fit between EMDB map EMD-9698 and PDB model 6IP2. Per-residue inclusion information can be found in section 3 on page 10.

9.1 Map-model overlay [i](#)



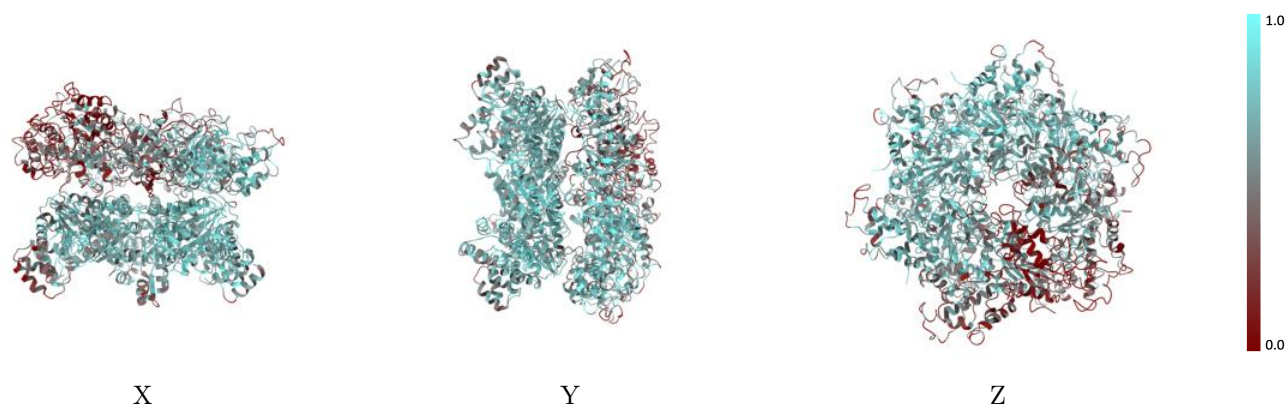
The images above show the 3D surface view of the map at the recommended contour level 0.062 at 50% transparency in yellow overlaid with a ribbon representation of the model coloured in blue. These images allow for the visual assessment of the quality of fit between the atomic model and the map.

9.2 Q-score mapped to coordinate model [i](#)



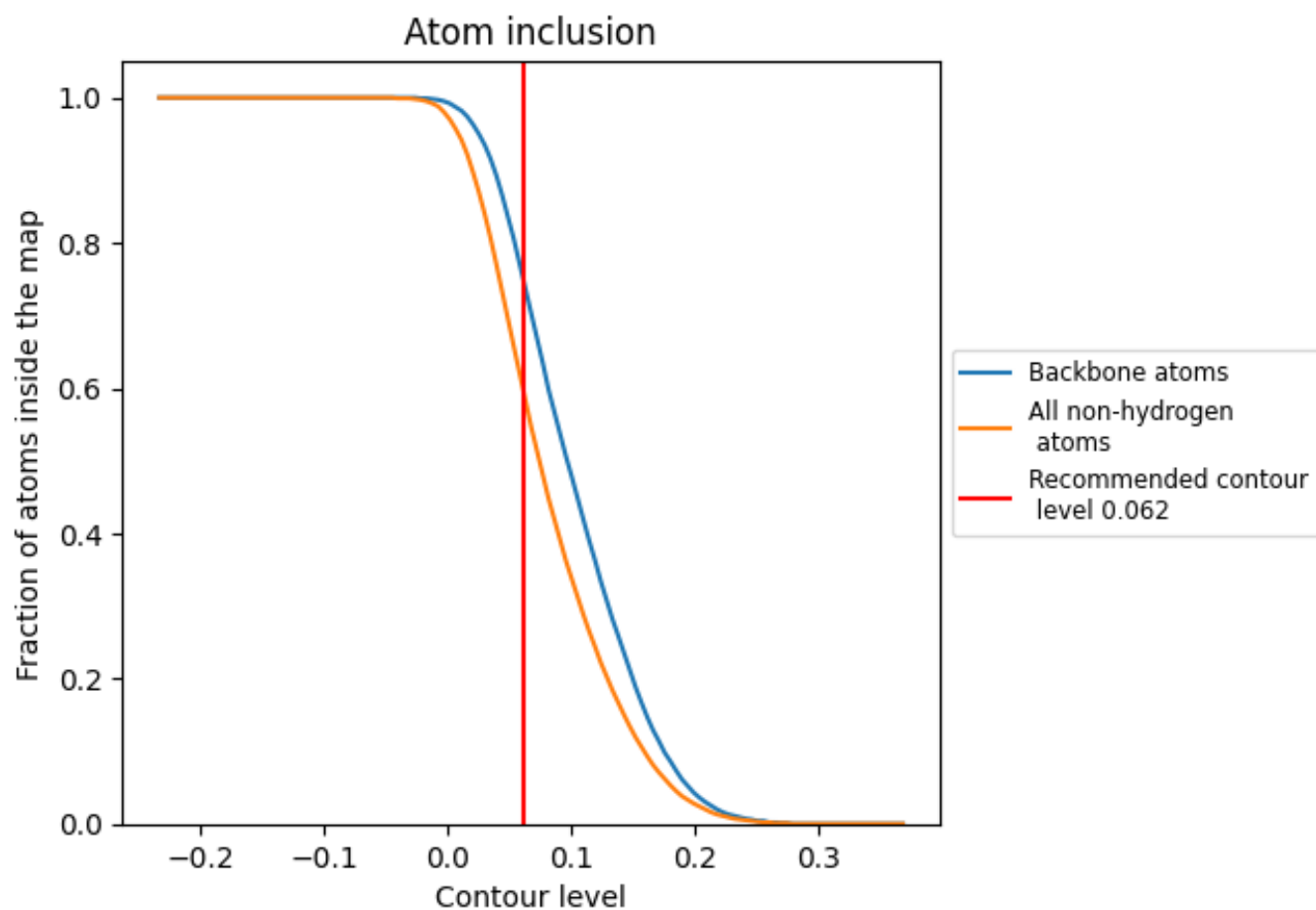
The images above show the model with each residue coloured according to its Q-score. This shows their resolvability in the map with higher Q-score values reflecting better resolvability. Please note: Q-score is calculating the resolvability of atoms, and thus high values are only expected at resolutions at which atoms can be resolved. Low Q-score values may therefore be expected for many entries.

9.3 Atom inclusion mapped to coordinate model [i](#)



The images above show the model with each residue coloured according to its atom inclusion. This shows to what extent they are inside the map at the recommended contour level (0.062).















9.4 Atom inclusion [i](#)



At the recommended contour level, 75% of all backbone atoms, 60% of all non-hydrogen atoms, are inside the map.

9.5 Map-model fit summary [i](#)

The table lists the average atom inclusion at the recommended contour level (0.062) and Q-score for the entire model and for each chain.

Chain	Atom inclusion	Q-score
All	 0.5950	 0.3840
A	 0.4900	 0.3590
B	 0.6640	 0.4110
C	 0.7050	 0.4240
D	 0.6890	 0.4160
E	 0.6130	 0.3830
F	 0.4080	 0.3130

