



# Full wwPDB X-ray Structure Validation Report ⓘ

Mar 5, 2026 – 01:42 PM UTC

PDB ID : 2ITP / pdb\_00002itp  
Title : Crystal structure of EGFR kinase domain G719S mutation in complex with AEE788  
Authors : Yun, C.-H.; Boggon, T.J.; Li, Y.; Woo, S.; Greulich, H.; Meyerson, M.; Eck, M.J.  
Deposited on : 2006-05-25  
Resolution : 2.74 Å(reported)

This is a Full wwPDB X-ray Structure Validation Report for a publicly released PDB entry.

We welcome your comments at [validation@mail.wwpdb.org](mailto:validation@mail.wwpdb.org)

A user guide is available at

<https://www.wwpdb.org/validation/2017/XrayValidationReportHelp>

with specific help available everywhere you see the ⓘ symbol.

The types of validation reports are described at

<http://www.wwpdb.org/validation/2017/FAQs#types>.

---

The following versions of software and data (see [references ⓘ](#)) were used in the production of this report:

MolProbity : 4-5-2 with Phenix2.0  
Mogul : 2022.3.0, CSD as543be (2022)  
Xtriage (Phenix) : 2.0  
EDS : 3.0  
Buster-report : wwPDB partial adaption of 1.1.7 (2018)  
Percentile statistics : 20250101.v01 (using entries in the PDB archive January 1st 2025)  
CCP4 : 9.0.010 (Gargrove)  
Density-Fitness : 1.0.12  
Ideal geometry (proteins) : Engh & Huber (2001)  
Ideal geometry (DNA, RNA) : Parkinson et al. (1996)  
Validation Pipeline (wwPDB-VP) : 2.49

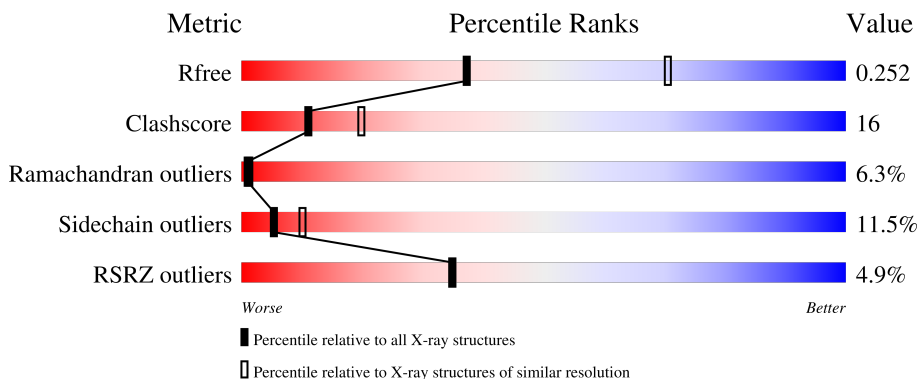
# 1 Overall quality at a glance

The following experimental techniques were used to determine the structure:

*X-RAY DIFFRACTION*

The reported resolution of this entry is 2.74 Å.

Percentile scores (ranging between 0-100) for global validation metrics of the entry are shown in the following graphic. The table shows the number of entries on which the scores are based.



Metric	Whole archive (#Entries)	Similar resolution (#Entries, resolution range(Å))
$R_{free}$	180053	1819 (2.76-2.72)
Clashscore	190562	1866 (2.76-2.72)
Ramachandran outliers	187476	1830 (2.76-2.72)
Sidechain outliers	187428	1831 (2.76-2.72)
RSRZ outliers	180081	1819 (2.76-2.72)

The table below summarises the geometric issues observed across the polymeric chains and their fit to the electron density. The red, orange, yellow and green segments of the lower bar indicate the fraction of residues that contain outliers for  $\geq 3$ , 2, 1 and 0 types of geometric quality criteria respectively. A grey segment represents the fraction of residues that are not modelled. The numeric value for each fraction is indicated below the corresponding segment, with a dot representing fractions  $\leq 5\%$ . The upper red bar (where present) indicates the fraction of residues that have poor fit to the electron density. The numeric value is given above the bar.

Mol	Chain	Length	Quality of chain
1	A	327	

## 2 Entry composition [i](#)

There are 3 unique types of molecules in this entry. The entry contains 2546 atoms, of which 0 are hydrogens and 0 are deuteriums.

In the tables below, the ZeroOcc column contains the number of atoms modelled with zero occupancy, the AltConf column contains the number of residues with at least one atom in alternate conformation and the Trace column contains the number of residues modelled with at most 2 atoms.

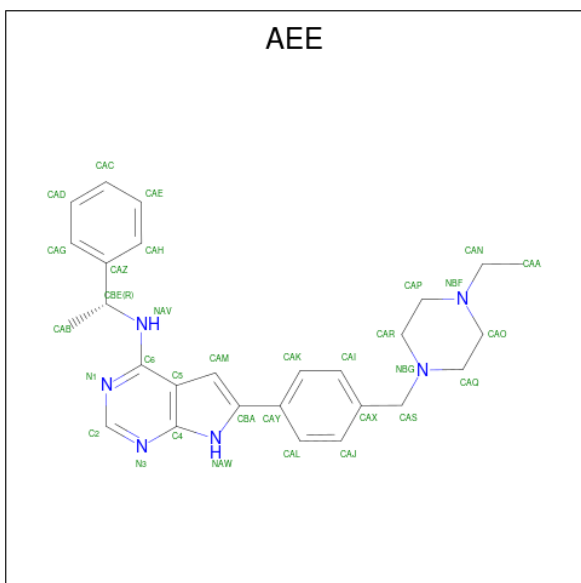
- Molecule 1 is a protein called EPIDERMAL GROWTH FACTOR RECEPTOR PRECURSOR.

Mol	Chain	Residues	Atoms					ZeroOcc	AltConf	Trace
			Total	C	N	O	S			
1	A	305	2448	1570	408	452	18	0	1	0

There is a discrepancy between the modelled and reference sequences:

Chain	Residue	Modelled	Actual	Comment	Reference
A	719	SER	GLY	engineered mutation	UNP P00533

- Molecule 2 is 6-{4-[(4-ETHYLPIPERAZIN-1-YL)METHYL]PHENYL}-N-[(1R)-1-PHENYLETHYL]-7H-PYRROLO[2,3-D]PYRIMIDIN-4-AMINE (CCD ID: AEE) (formula: C<sub>27</sub>H<sub>32</sub>N<sub>6</sub>).



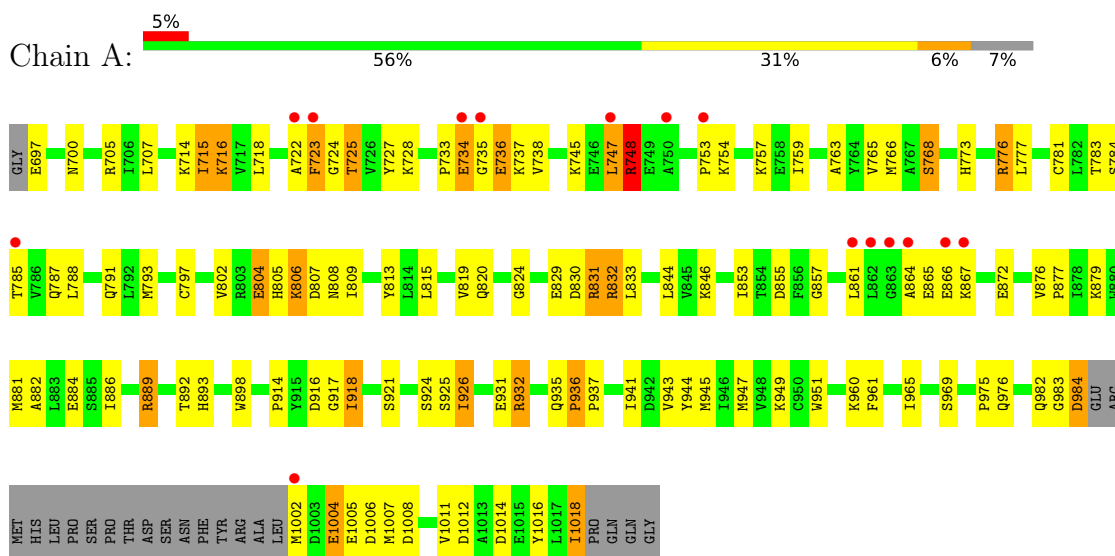
- Molecule 3 is water.

Mol	Chain	Residues	Atoms	ZeroOcc	AltConf
3	A	65	Total O 65 65	0	0

### 3 Residue-property plots

These plots are drawn for all protein, RNA, DNA and oligosaccharide chains in the entry. The first graphic for a chain summarises the proportions of the various outlier classes displayed in the second graphic. The second graphic shows the sequence view annotated by issues in geometry and electron density. Residues are color-coded according to the number of geometric quality criteria for which they contain at least one outlier: green = 0, yellow = 1, orange = 2 and red = 3 or more. A red dot above a residue indicates a poor fit to the electron density ( $RSRZ > 2$ ). Stretches of 2 or more consecutive residues without any outlier are shown as a green connector. Residues present in the sample, but not in the model, are shown in grey.

- Molecule 1: EPIDERMAL GROWTH FACTOR RECEPTOR PRECURSOR



## 4 Data and refinement statistics i

Property	Value	Source
Space group	I 2 3	Depositor
Cell constants a, b, c, $\alpha$ , $\beta$ , $\gamma$	144.62Å 144.62Å 144.62Å 90.00° 90.00° 90.00°	Depositor
Resolution (Å)	24.80 – 2.74 24.80 – 2.74	Depositor EDS
% Data completeness (in resolution range)	99.9 (24.80-2.74) 99.7 (24.80-2.74)	Depositor EDS
$R_{merge}$	0.06	Depositor
$R_{sym}$	(Not available)	Depositor
$\langle I/\sigma(I) \rangle$ <sup>1</sup>	4.04 (at 2.76Å)	Xtrriage
Refinement program	REFMAC 5.2.0019	Depositor
R, $R_{free}$	0.196 , 0.255 0.194 , 0.252	Depositor DCC
$R_{free}$ test set	940 reflections (7.05%)	wwPDB-VP
Wilson B-factor (Å <sup>2</sup> )	58.1	Xtrriage
Anisotropy	0.000	Xtrriage
Bulk solvent $k_{sol}$ (e/Å <sup>3</sup> ), $B_{sol}$ (Å <sup>2</sup> )	0.33 , 41.1	EDS
L-test for twinning <sup>2</sup>	$\langle  L  \rangle = 0.48$ , $\langle L^2 \rangle = 0.31$	Xtrriage
Estimated twinning fraction	0.037 for -l,-k,-h	Xtrriage
$F_o, F_c$ correlation	0.95	EDS
Total number of atoms	2546	wwPDB-VP
Average B, all atoms (Å <sup>2</sup> )	56.0	wwPDB-VP

Xtrriage's analysis on translational NCS is as follows: *The largest off-origin peak in the Patterson function is 2.95% of the height of the origin peak. No significant pseudotranslation is detected.*

<sup>1</sup>Intensities estimated from amplitudes.

<sup>2</sup>Theoretical values of  $\langle |L| \rangle$ ,  $\langle L^2 \rangle$  for acentric reflections are 0.5, 0.333 respectively for untwinned datasets, and 0.375, 0.2 for perfectly twinned datasets.

## 5 Model quality [i](#)

### 5.1 Standard geometry [i](#)

Bond lengths and bond angles in the following residue types are not validated in this section: AEE

The Z score for a bond length (or angle) is the number of standard deviations the observed value is removed from the expected value. A bond length (or angle) with  $|Z| > 5$  is considered an outlier worth inspection. RMSZ is the root-mean-square of all Z scores of the bond lengths (or angles).

Mol	Chain	Bond lengths		Bond angles	
		RMSZ	# Z  >5	RMSZ	# Z  >5
1	A	1.02	1/2499 (0.0%)	1.14	7/3381 (0.2%)

All (1) bond length outliers are listed below:

Mol	Chain	Res	Type	Atoms	Z	Observed(Å)	Ideal(Å)
1	A	776	ARG	N-CA	5.52	1.53	1.46

All (7) bond angle outliers are listed below:

Mol	Chain	Res	Type	Atoms	Z	Observed(°)	Ideal(°)
1	A	831	ARG	N-CA-C	-8.03	103.97	113.21
1	A	936	PRO	CA-C-N	6.37	127.80	119.84
1	A	936	PRO	C-N-CA	6.37	127.80	119.84
1	A	718	LEU	N-CA-C	-5.46	107.27	114.04
1	A	1011	VAL	N-CA-C	-5.31	100.41	108.17
1	A	763	ALA	N-CA-C	-5.24	105.57	111.28
1	A	932	ARG	NE-CZ-NH1	-5.19	116.31	121.50

There are no chirality outliers.

There are no planarity outliers.

### 5.2 Too-close contacts [i](#)

In the following table, the Non-H and H(model) columns list the number of non-hydrogen atoms and hydrogen atoms in the chain respectively. The H(added) column lists the number of hydrogen atoms added and optimized by MolProbity. The Clashes column lists the number of clashes within the asymmetric unit, whereas Symm-Clashes lists symmetry-related clashes.

Mol	Chain	Non-H	H(model)	H(added)	Clashes	Symm-Clashes
1	A	2448	0	2477	82	0
2	A	33	0	32	1	0
3	A	65	0	0	6	0
All	All	2546	0	2509	82	0

The all-atom clashscore is defined as the number of clashes found per 1000 atoms (including hydrogen atoms). The all-atom clashscore for this structure is 16.

All (82) close contacts within the same asymmetric unit are listed below, sorted by their clash magnitude.

Atom-1	Atom-2	Interatomic distance (Å)	Clash overlap (Å)
1:A:736:GLU:OE2	1:A:1016:TYR:OH	1.82	0.97
1:A:766:MET:HE2	3:A:3016:HOH:O	1.65	0.95
1:A:724:GLY:HA3	1:A:748:ARG:H	1.32	0.92
1:A:759:ILE:CG1	1:A:788:LEU:HD13	2.07	0.84
1:A:804:GLU:O	1:A:804:GLU:HG3	1.88	0.73
1:A:768:SER:O	1:A:831:ARG:NH1	2.23	0.72
1:A:917:GLY:O	1:A:918:ILE:C	2.33	0.71
1:A:759:ILE:HG12	1:A:788:LEU:CD1	2.23	0.68
1:A:918:ILE:HG21	1:A:926:ILE:HD12	1.77	0.66
1:A:715:ILE:HG22	1:A:715:ILE:O	1.95	0.66
1:A:715:ILE:O	1:A:716:LYS:HB3	1.95	0.66
1:A:766:MET:HB3	1:A:777:LEU:HB2	1.80	0.64
1:A:735:GLY:O	1:A:737:LYS:N	2.30	0.64
1:A:932:ARG:NH1	1:A:951:TRP:O	2.31	0.64
1:A:960:LYS:HD2	3:A:3036:HOH:O	1.97	0.64
1:A:759:ILE:HG12	1:A:788:LEU:HD13	1.80	0.64
1:A:716:LYS:HE3	3:A:3010:HOH:O	1.99	0.63
1:A:724:GLY:CA	1:A:748:ARG:H	2.10	0.63
1:A:700:ASN:C	1:A:700:ASN:HD22	2.08	0.61
1:A:733:PRO:O	1:A:734:GLU:C	2.42	0.61
1:A:945:MET:O	1:A:949:LYS:HG3	2.01	0.61
1:A:766:MET:HE1	2:A:2019:AEE:HAE	1.82	0.61
1:A:773:HIS:CE1	1:A:820:GLN:HG2	2.38	0.59
1:A:723:PHE:O	1:A:748:ARG:HG2	2.02	0.59
1:A:876:VAL:HG12	1:A:877:PRO:HD2	1.85	0.58
1:A:781:CYS:HB3	1:A:787:GLN:HE21	1.69	0.57
1:A:931:GLU:O	1:A:932:ARG:HD3	2.05	0.57
1:A:759:ILE:CG1	1:A:788:LEU:CD1	2.78	0.56
1:A:931:GLU:O	1:A:932:ARG:NE	2.40	0.55
1:A:830:ASP:C	1:A:832:ARG:H	2.12	0.55
1:A:765:VAL:HG13	1:A:833:LEU:HD11	1.89	0.55

*Continued on next page...*

*Continued from previous page...*

Atom-1	Atom-2	Interatomic distance (Å)	Clash overlap (Å)
1:A:759:ILE:CD1	1:A:788:LEU:HD13	2.39	0.53
1:A:715:ILE:O	1:A:715:ILE:CG2	2.56	0.52
1:A:805:HIS:O	1:A:806:LYS:C	2.51	0.52
1:A:931:GLU:O	1:A:932:ARG:CD	2.58	0.52
1:A:813:TYR:HD2	3:A:3030:HOH:O	1.93	0.52
1:A:802:VAL:HA	1:A:809:ILE:CD1	2.39	0.52
1:A:715:ILE:O	1:A:716:LYS:CB	2.58	0.51
1:A:882:ALA:HA	1:A:898:TRP:CD2	2.45	0.51
1:A:983:GLY:O	1:A:984:ASP:C	2.54	0.51
1:A:759:ILE:HD11	1:A:788:LEU:HD13	1.93	0.50
1:A:829:GLU:HG3	1:A:893:HIS:CD2	2.46	0.50
1:A:733:PRO:O	1:A:734:GLU:O	2.30	0.50
1:A:714:LYS:C	1:A:715:ILE:HG13	2.37	0.48
1:A:879:LYS:HD3	1:A:914:PRO:O	2.14	0.48
1:A:932:ARG:HD3	1:A:932:ARG:HA	1.51	0.48
1:A:705:ARG:HG2	1:A:707:LEU:CD2	2.45	0.47
1:A:705:ARG:NH1	1:A:1018:ILE:HG21	2.30	0.47
1:A:759:ILE:HG13	1:A:788:LEU:HD13	1.90	0.47
1:A:829:GLU:HG3	1:A:893:HIS:CG	2.50	0.47
1:A:961:PHE:O	1:A:965:ILE:HG13	2.16	0.46
1:A:700:ASN:C	1:A:700:ASN:ND2	2.73	0.46
1:A:824:GLY:HA3	1:A:853:ILE:HD12	1.97	0.46
1:A:791:GLN:NE2	1:A:1012:ASP:OD2	2.48	0.46
1:A:725:THR:HB	1:A:727:TYR:CE1	2.52	0.45
1:A:846:LYS:NZ	1:A:1014:ASP:OD2	2.38	0.45
1:A:886:ILE:HG21	1:A:924:SER:HB3	1.99	0.44
1:A:917:GLY:O	1:A:918:ILE:O	2.35	0.44
1:A:935:GLN:HA	1:A:944:TYR:CE2	2.52	0.44
1:A:728:LYS:HZ2	1:A:1002:MET:N	2.15	0.44
1:A:830:ASP:C	1:A:832:ARG:N	2.76	0.44
1:A:1004:GLU:H	1:A:1007:MET:HE2	1.82	0.43
1:A:723:PHE:O	1:A:748:ARG:CG	2.67	0.43
1:A:747:LEU:HG	1:A:759:ILE:HD12	2.01	0.43
1:A:815:LEU:HD12	1:A:975:PRO:HB3	2.00	0.43
1:A:960:LYS:HA	3:A:3035:HOH:O	2.19	0.43
1:A:783:THR:OG1	1:A:785:THR:O	2.27	0.42
1:A:815:LEU:O	1:A:819:VAL:HG23	2.20	0.42
1:A:943:VAL:HG12	1:A:947:MET:HE3	2.01	0.42
1:A:705:ARG:HG2	1:A:707:LEU:HD21	2.01	0.42
1:A:736:GLU:OE2	1:A:1016:TYR:CZ	2.71	0.42
1:A:781:CYS:HB3	1:A:787:GLN:HB2	2.02	0.42

*Continued on next page...*

Continued from previous page...

Atom-1	Atom-2	Interatomic distance (Å)	Clash overlap (Å)
1:A:737:LYS:HA	3:A:3012:HOH:O	2.20	0.42
1:A:802:VAL:HA	1:A:809:ILE:HD11	2.02	0.41
1:A:876:VAL:HG12	1:A:881:MET:SD	2.61	0.41
1:A:935:GLN:HA	1:A:944:TYR:CD2	2.55	0.41
1:A:793:MET:HG3	1:A:844:LEU:HB2	2.03	0.41
1:A:916:ASP:OD2	1:A:917:GLY:N	2.54	0.41
1:A:714:LYS:HD3	1:A:727:TYR:CD2	2.55	0.41
1:A:738:VAL:O	1:A:738:VAL:HG23	2.21	0.40
1:A:936:PRO:HA	1:A:937:PRO:HD2	1.75	0.40
1:A:736:GLU:O	1:A:737:LYS:CB	2.67	0.40

There are no symmetry-related clashes.

## 5.3 Torsion angles [i](#)

### 5.3.1 Protein backbone [i](#)

In the following table, the Percentiles column shows the percent Ramachandran outliers of the chain as a percentile score with respect to all X-ray entries followed by that with respect to entries of similar resolution.

The Analysed column shows the number of residues for which the backbone conformation was analysed, and the total number of residues.

Mol	Chain	Analysed	Favoured	Allowed	Outliers	Percentiles
1	A	302/327 (92%)	259 (86%)	24 (8%)	19 (6%)	<b>1</b> <b>1</b>

All (19) Ramachandran outliers are listed below:

Mol	Chain	Res	Type
1	A	722	ALA
1	A	723	PHE
1	A	734	GLU
1	A	736	GLU
1	A	864	ALA
1	A	716	LYS
1	A	865	GLU
1	A	1005	GLU
1	A	857	GLY
1	A	747	LEU
1	A	748	ARG

Continued on next page...

*Continued from previous page...*

Mol	Chain	Res	Type
1	A	806	LYS
1	A	918	ILE
1	A	1006	ASP
1	A	753	PRO
1	A	754	LYS
1	A	872	GLU
1	A	889	ARG
1	A	715	ILE

### 5.3.2 Protein sidechains [i](#)

In the following table, the Percentiles column shows the percent sidechain outliers of the chain as a percentile score with respect to all X-ray entries followed by that with respect to entries of similar resolution.

The Analysed column shows the number of residues for which the sidechain conformation was analysed, and the total number of residues.

Mol	Chain	Analysed	Rotameric	Outliers	Percentiles
1	A	270/288 (94%)	239 (88%)	31 (12%)	<b>5</b> <b>10</b>

All (31) residues with a non-rotameric sidechain are listed below:

Mol	Chain	Res	Type
1	A	697	GLU
1	A	725	THR
1	A	745	LYS
1	A	748	ARG
1	A	757	LYS
1	A	768	SER
1	A	776	ARG
1	A	784	SER
1	A	797	CYS
1	A	804	GLU
1	A	807	ASP
1	A	808	ASN
1	A	832	ARG
1	A	855	ASP
1	A	861	LEU
1	A	866	GLU
1	A	867	LYS
1	A	884	GLU

*Continued on next page...*

*Continued from previous page...*

Mol	Chain	Res	Type
1	A	889	ARG
1	A	892	THR
1	A	921	SER
1	A	925	SER
1	A	926	ILE
1	A	941	ILE
1	A	969	SER
1	A	976	GLN
1	A	982	GLN
1	A	984	ASP
1	A	1004	GLU
1	A	1008	ASP
1	A	1018	ILE

Sometimes sidechains can be flipped to improve hydrogen bonding and reduce clashes. All (6) such sidechains are listed below:

Mol	Chain	Res	Type
1	A	700	ASN
1	A	773	HIS
1	A	787	GLN
1	A	805	HIS
1	A	826	ASN
1	A	893	HIS

### 5.3.3 RNA [i](#)

There are no RNA molecules in this entry.

### 5.4 Non-standard residues in protein, DNA, RNA chains [i](#)

There are no non-standard protein/DNA/RNA residues in this entry.

### 5.5 Carbohydrates [i](#)

There are no oligosaccharides in this entry.

### 5.6 Ligand geometry [i](#)

1 ligand is modelled in this entry.

In the following table, the Counts columns list the number of bonds (or angles) for which Mogul statistics could be retrieved, the number of bonds (or angles) that are observed in the model and the number of bonds (or angles) that are defined in the Chemical Component Dictionary. The Link column lists molecule types, if any, to which the group is linked. The Z score for a bond length (or angle) is the number of standard deviations the observed value is removed from the expected value. A bond length (or angle) with  $|Z| > 2$  is considered an outlier worth inspection. RMSZ is the root-mean-square of all Z scores of the bond lengths (or angles).

Mol	Type	Chain	Res	Link	Bond lengths			Bond angles		
					Counts	RMSZ	# Z  > 2	Counts	RMSZ	# Z  > 2
2	AEE	A	2019	-	37,37,37	1.59	5 (13%)	45,51,51	2.30	15 (33%)

In the following table, the Chirals column lists the number of chiral outliers, the number of chiral centers analysed, the number of these observed in the model and the number defined in the Chemical Component Dictionary. Similar counts are reported in the Torsion and Rings columns. '-' means no outliers of that kind were identified.

Mol	Type	Chain	Res	Link	Chirals	Torsions	Rings
2	AEE	A	2019	-	-	2/18/28/28	0/5/5/5

All (5) bond length outliers are listed below:

Mol	Chain	Res	Type	Atoms	Z	Observed(Å)	Ideal(Å)
2	A	2019	AEE	CAY-CBA	-4.57	1.40	1.47
2	A	2019	AEE	CBA-NAW	-3.45	1.34	1.38
2	A	2019	AEE	C4-NAW	-3.39	1.33	1.37
2	A	2019	AEE	C5-CAM	-3.19	1.33	1.44
2	A	2019	AEE	C5-C6	-2.07	1.40	1.42

All (15) bond angle outliers are listed below:

Mol	Chain	Res	Type	Atoms	Z	Observed(°)	Ideal(°)
2	A	2019	AEE	C5-C4-N3	-8.92	119.42	126.40
2	A	2019	AEE	N1-C2-N3	-5.22	120.69	128.58
2	A	2019	AEE	CAX-CAS-NBG	-4.29	104.38	113.15
2	A	2019	AEE	NAW-C4-N3	3.96	133.34	125.32
2	A	2019	AEE	CAP-CAR-NBG	3.22	117.14	110.65
2	A	2019	AEE	CAR-NBG-CAQ	2.87	115.03	108.84
2	A	2019	AEE	CAP-NBF-CAO	2.85	114.97	108.84
2	A	2019	AEE	CAY-CBA-CAM	-2.54	125.68	129.59
2	A	2019	AEE	CAZ-CBE-NAV	-2.52	107.79	112.53
2	A	2019	AEE	CAR-CAP-NBF	2.34	115.37	110.65
2	A	2019	AEE	CAE-CAH-CAZ	-2.26	117.94	120.65
2	A	2019	AEE	CAC-CAD-CAG	-2.15	117.58	120.24

*Continued on next page...*

*Continued from previous page...*

Mol	Chain	Res	Type	Atoms	Z	Observed(°)	Ideal(°)
2	A	2019	AEE	NAV-C6-N1	2.08	120.95	118.00
2	A	2019	AEE	CAY-CBA-NAW	2.06	125.17	121.93
2	A	2019	AEE	CAH-CAZ-CAG	2.02	120.81	118.30

There are no chirality outliers.

All (2) torsion outliers are listed below:

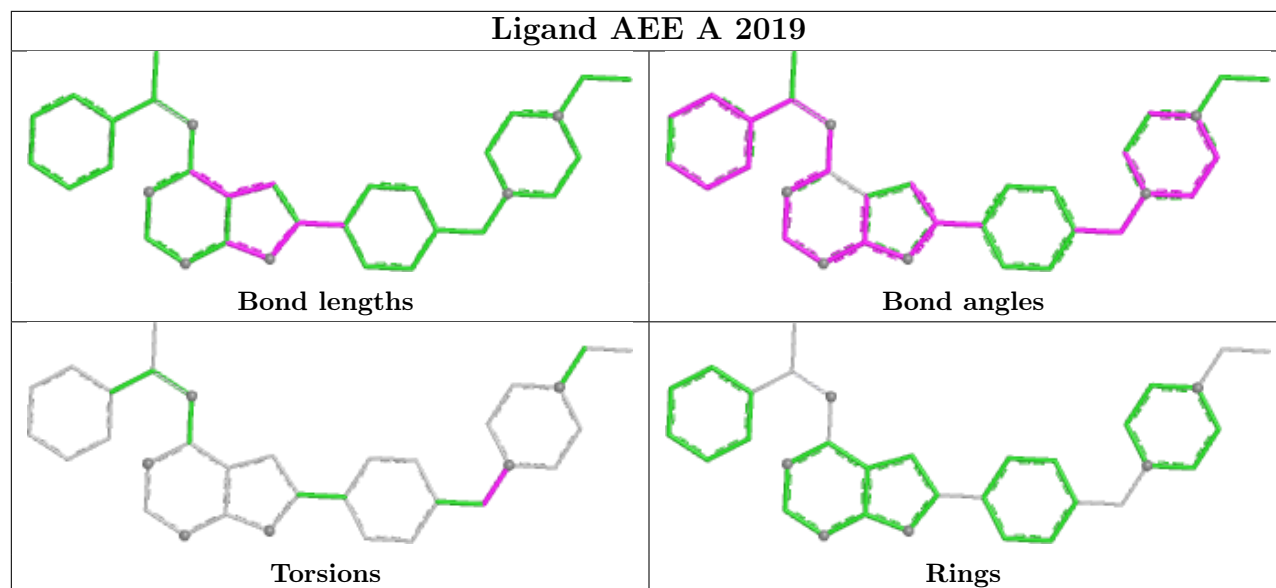
Mol	Chain	Res	Type	Atoms
2	A	2019	AEE	CAX-CAS-NBG-CAR
2	A	2019	AEE	CAX-CAS-NBG-CAQ

There are no ring outliers.

1 monomer is involved in 1 short contact:

Mol	Chain	Res	Type	Clashes	Symm-Clashes
2	A	2019	AEE	1	0

The following is a two-dimensional graphical depiction of Mogul quality analysis of bond lengths, bond angles, torsion angles, and ring geometry for all instances of the Ligand of Interest. In addition, ligands with molecular weight > 250 and outliers as shown on the validation Tables will also be included. For torsion angles, if less than 5% of the Mogul distribution of torsion angles is within 10 degrees of the torsion angle in question, then that torsion angle is considered an outlier. Any bond that is central to one or more torsion angles identified as an outlier by Mogul will be highlighted in the graph. For rings, the root-mean-square deviation (RMSD) between the ring in question and similar rings identified by Mogul is calculated over all ring torsion angles. If the average RMSD is greater than 60 degrees and the minimal RMSD between the ring in question and any Mogul-identified rings is also greater than 60 degrees, then that ring is considered an outlier. The outliers are highlighted in purple. The color gray indicates Mogul did not find sufficient equivalents in the CSD to analyse the geometry.



## 5.7 Other polymers [i](#)

There are no such residues in this entry.

## 5.8 Polymer linkage issues [i](#)

There are no chain breaks in this entry.

## 6 Fit of model and data [i](#)

### 6.1 Protein, DNA and RNA chains [i](#)

In the following table, the column labelled ‘#RSRZ > 2’ contains the number (and percentage) of RSRZ outliers, followed by percent RSRZ outliers for the chain as percentile scores relative to all X-ray entries and entries of similar resolution. The OWAB column contains the minimum, median, 95<sup>th</sup> percentile and maximum values of the occupancy-weighted average B-factor per residue. The column labelled ‘Q < 0.9’ lists the number of (and percentage) of residues with an average occupancy less than 0.9.

Mol	Chain	Analysed	<RSRZ>	#RSRZ>2	OWAB(Å <sup>2</sup> )	Q<0.9
1	A	305/327 (93%)	-0.02	15 (4%) 35 35	21, 50, 102, 112	9 (2%)

All (15) RSRZ outliers are listed below:

Mol	Chain	Res	Type	RSRZ
1	A	747	LEU	5.5
1	A	864	ALA	4.5
1	A	1002	MET	3.3
1	A	723	PHE	3.1
1	A	750	ALA	3.1
1	A	861	LEU	2.8
1	A	862	LEU	2.6
1	A	863	GLY	2.5
1	A	734	GLU	2.4
1	A	785	THR	2.4
1	A	735	GLY	2.4
1	A	722	ALA	2.4
1	A	867	LYS	2.2
1	A	866	GLU	2.2
1	A	753	PRO	2.1

### 6.2 Non-standard residues in protein, DNA, RNA chains [i](#)

There are no non-standard protein/DNA/RNA residues in this entry.

### 6.3 Carbohydrates [i](#)

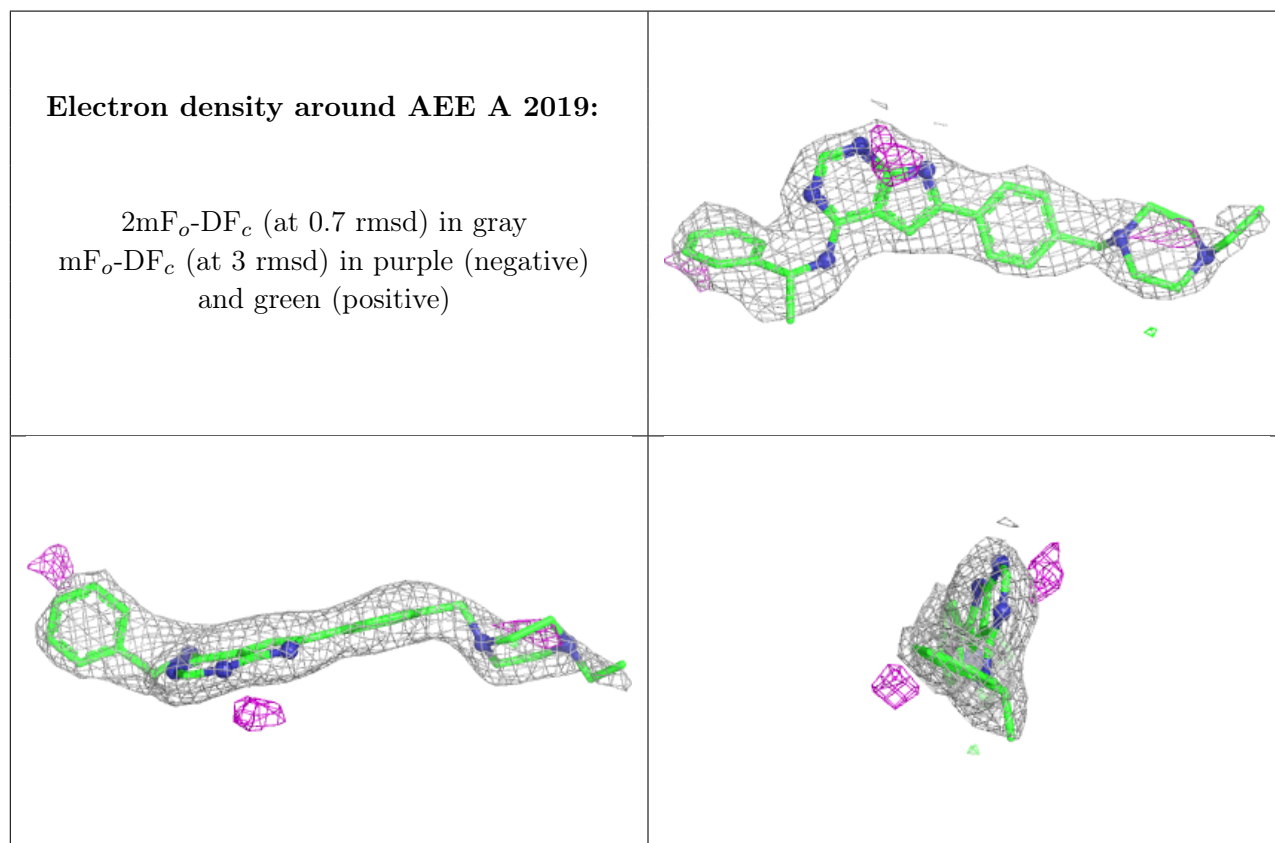
There are no oligosaccharides in this entry.

## 6.4 Ligands [i](#)

In the following table, the Atoms column lists the number of modelled atoms in the group and the number defined in the chemical component dictionary. The B-factors column lists the minimum, median, 95<sup>th</sup> percentile and maximum values of B factors of atoms in the group. The column labelled 'Q< 0.9' lists the number of atoms with occupancy less than 0.9.

Mol	Type	Chain	Res	Atoms	RSCC	RSR	B-factors( $\text{\AA}^2$ )	Q<0.9
2	AEE	A	2019	33/33	0.86	0.15	64,69,86,86	0

The following is a graphical depiction of the model fit to experimental electron density of all instances of the Ligand of Interest. In addition, ligands with molecular weight > 250 and outliers as shown on the geometry validation Tables will also be included. Each fit is shown from different orientation to approximate a three-dimensional view.



## 6.5 Other polymers [i](#)

There are no such residues in this entry.