



# wwPDB X-ray Structure Validation Summary Report ⓘ

Mar 5, 2026 – 02:58 PM UTC

PDB ID : 3ITG / pdb\_00003itg  
Title : Structure the proline utilization A proline dehydrogenase domain (PutA86-630) inactivated with N-propargylglycine  
Authors : Tanner, J.J.  
Deposited on : 2009-08-28  
Resolution : 2.15 Å (reported)

This is a wwPDB X-ray Structure Validation Summary Report for a publicly released PDB entry.

We welcome your comments at [validation@mail.wwpdb.org](mailto:validation@mail.wwpdb.org)

A user guide is available at

<https://www.wwpdb.org/validation/2017/XrayValidationReportHelp>

with specific help available everywhere you see the ⓘ symbol.

The types of validation reports are described at

<http://www.wwpdb.org/validation/2017/FAQs#types>.

---

The following versions of software and data (see [references ⓘ](#)) were used in the production of this report:

MolProbity : 4-5-2 with Phenix2.0  
Mogul : 2022.3.0, CSD as543be (2022)  
Xtrriage (Phenix) : 2.0  
EDS : 3.0  
Buster-report : wwPDB partial adaption of 1.1.7 (2018)  
Percentile statistics : 20250101.v01 (using entries in the PDB archive January 1st 2025)  
CCP4 : 9.0.010 (Gargrove)  
Density-Fitness : 1.0.12  
Ideal geometry (proteins) : Engh & Huber (2001)  
Ideal geometry (DNA, RNA) : Parkinson et al. (1996)  
Validation Pipeline (wwPDB-VP) : 2.49

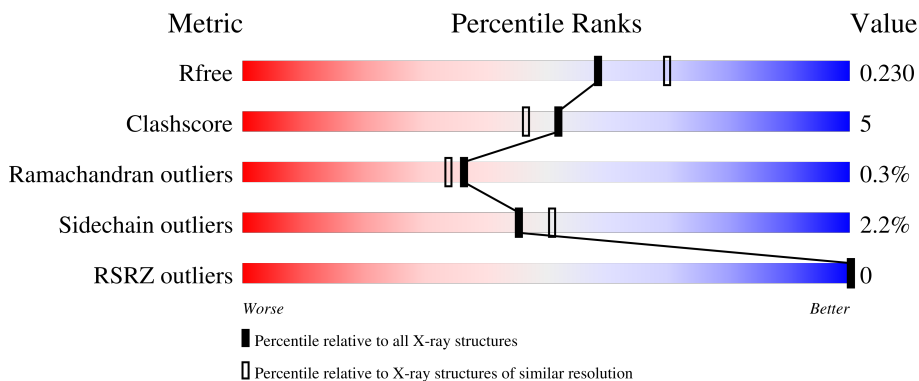
# 1 Overall quality at a glance

The following experimental techniques were used to determine the structure:

*X-RAY DIFFRACTION*

The reported resolution of this entry is 2.15 Å.

Percentile scores (ranging between 0-100) for global validation metrics of the entry are shown in the following graphic. The table shows the number of entries on which the scores are based.



Metric	Whole archive (#Entries)	Similar resolution (#Entries, resolution range(Å))
$R_{free}$	180053	2057 (2.16-2.16)
Clashscore	190562	2159 (2.16-2.16)
Ramachandran outliers	187476	2134 (2.16-2.16)
Sidechain outliers	187428	2133 (2.16-2.16)
RSRZ outliers	180081	2059 (2.16-2.16)

The table below summarises the geometric issues observed across the polymeric chains and their fit to the electron density. The red, orange, yellow and green segments of the lower bar indicate the fraction of residues that contain outliers for  $\geq 3$ , 2, 1 and 0 types of geometric quality criteria respectively. A grey segment represents the fraction of residues that are not modelled. The numeric value for each fraction is indicated below the corresponding segment, with a dot representing fractions  $\leq 5\%$ . The upper red bar (where present) indicates the fraction of residues that have poor fit to the electron density. The numeric value is given above the bar.

Mol	Chain	Length	Quality of chain
1	A	602	
1	B	602	

## 2 Entry composition i

There are 3 unique types of molecules in this entry. The entry contains 6480 atoms, of which 0 are hydrogens and 0 are deuteriums.

In the tables below, the ZeroOcc column contains the number of atoms modelled with zero occupancy, the AltConf column contains the number of residues with at least one atom in alternate conformation and the Trace column contains the number of residues modelled with at most 2 atoms.

- Molecule 1 is a protein called Bifunctional protein putA.

Mol	Chain	Residues	Atoms					ZeroOcc	AltConf	Trace
			Total	C	N	O	S			
1	A	399	3060	1944	526	579	11	0	1	0
1	B	401	3073	1954	529	579	11	0	1	0

There are 36 discrepancies between the modelled and reference sequences:

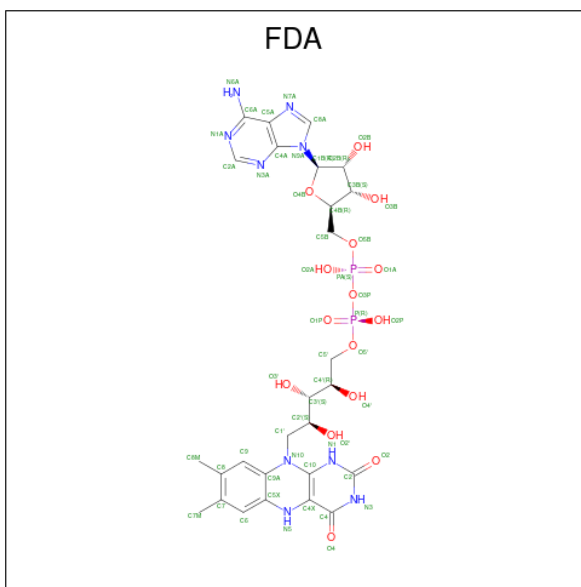
Chain	Residue	Modelled	Actual	Comment	Reference
A	670	SER	-	expression tag	UNP P09546
A	671	SER	-	expression tag	UNP P09546
A	672	SER	-	expression tag	UNP P09546
A	673	VAL	-	expression tag	UNP P09546
A	674	ASP	-	expression tag	UNP P09546
A	675	LYS	-	expression tag	UNP P09546
A	676	LEU	-	expression tag	UNP P09546
A	677	ALA	-	expression tag	UNP P09546
A	678	ALA	-	expression tag	UNP P09546
A	679	ALA	-	expression tag	UNP P09546
A	680	LEU	-	expression tag	UNP P09546
A	681	GLU	-	expression tag	UNP P09546
A	682	HIS	-	expression tag	UNP P09546
A	683	HIS	-	expression tag	UNP P09546
A	684	HIS	-	expression tag	UNP P09546
A	685	HIS	-	expression tag	UNP P09546
A	686	HIS	-	expression tag	UNP P09546
A	687	HIS	-	expression tag	UNP P09546
B	670	SER	-	expression tag	UNP P09546
B	671	SER	-	expression tag	UNP P09546
B	672	SER	-	expression tag	UNP P09546
B	673	VAL	-	expression tag	UNP P09546
B	674	ASP	-	expression tag	UNP P09546
B	675	LYS	-	expression tag	UNP P09546
B	676	LEU	-	expression tag	UNP P09546

*Continued on next page...*

Continued from previous page...

Chain	Residue	Modelled	Actual	Comment	Reference
B	677	ALA	-	expression tag	UNP P09546
B	678	ALA	-	expression tag	UNP P09546
B	679	ALA	-	expression tag	UNP P09546
B	680	LEU	-	expression tag	UNP P09546
B	681	GLU	-	expression tag	UNP P09546
B	682	HIS	-	expression tag	UNP P09546
B	683	HIS	-	expression tag	UNP P09546
B	684	HIS	-	expression tag	UNP P09546
B	685	HIS	-	expression tag	UNP P09546
B	686	HIS	-	expression tag	UNP P09546
B	687	HIS	-	expression tag	UNP P09546

- Molecule 2 is DIHYDROFLAVINE-ADENINE DINUCLEOTIDE (CCD ID: FDA) (formula:  $C_{27}H_{35}N_9O_{15}P_2$ ).



Mol	Chain	Residues	Atoms					ZeroOcc	AltConf
			Total	C	N	O	P		
2	A	1	53	27	9	15	2	0	0
2	B	1	53	27	9	15	2	0	0

- Molecule 3 is water.

Mol	Chain	Residues	Atoms		ZeroOcc	AltConf
3	A	124	Total	O	0	0
			124	124		

Continued on next page...

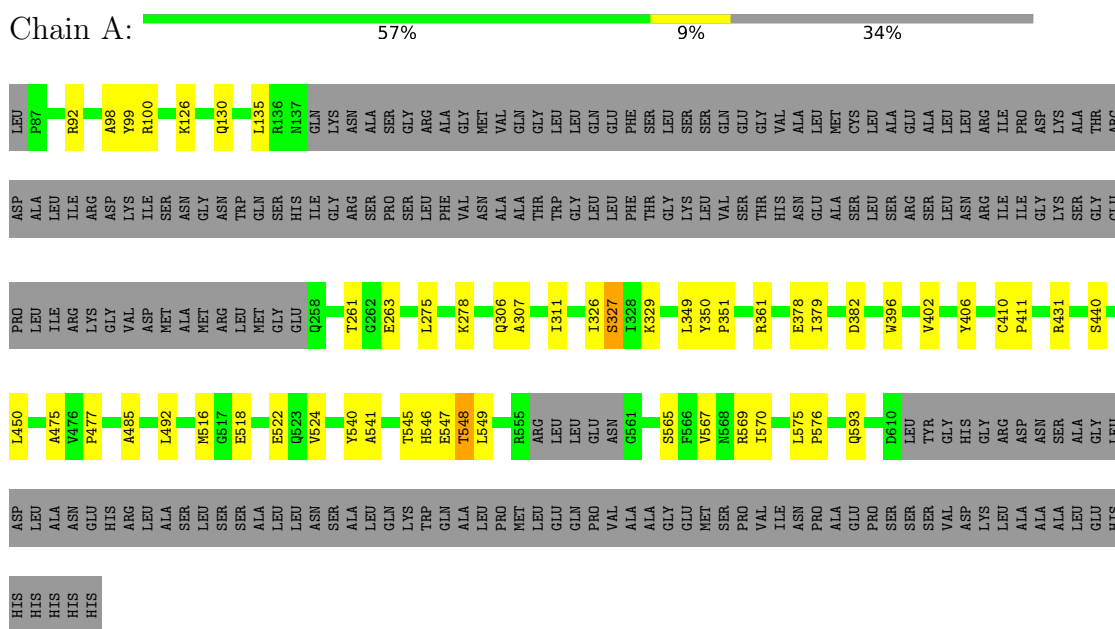
*Continued from previous page...*

<b>Mol</b>	<b>Chain</b>	<b>Residues</b>	<b>Atoms</b>		<b>ZeroOcc</b>	<b>AltConf</b>
3	B	117	Total 117	O 117	0	0

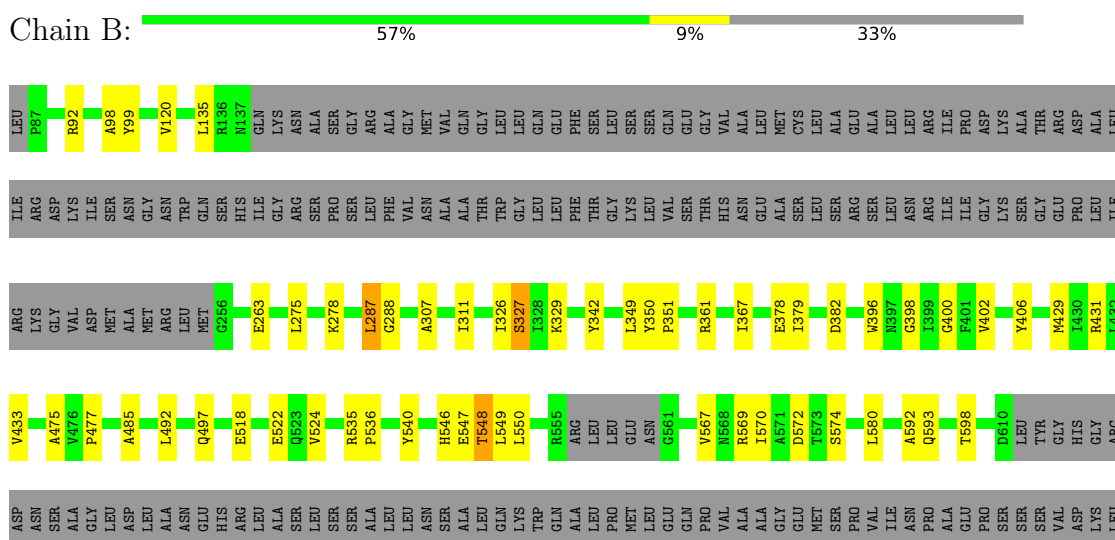
### 3 Residue-property plots [i](#)

These plots are drawn for all protein, RNA, DNA and oligosaccharide chains in the entry. The first graphic for a chain summarises the proportions of the various outlier classes displayed in the second graphic. The second graphic shows the sequence view annotated by issues in geometry and electron density. Residues are color-coded according to the number of geometric quality criteria for which they contain at least one outlier: green = 0, yellow = 1, orange = 2 and red = 3 or more. A red dot above a residue indicates a poor fit to the electron density ( $RSRZ > 2$ ). Stretches of 2 or more consecutive residues without any outlier are shown as a green connector. Residues present in the sample, but not in the model, are shown in grey.

- Molecule 1: Bifunctional protein putA



- Molecule 1: Bifunctional protein putA



ALA  
ALA  
ALA  
LEU  
GLU  
HIS  
HIS  
HIS  
HIS  
HIS

## 4 Data and refinement statistics i

Property	Value	Source
Space group	I 21 21 21	Depositor
Cell constants a, b, c, $\alpha$ , $\beta$ , $\gamma$	127.48Å 133.36Å 133.64Å 90.00° 90.00° 90.00°	Depositor
Resolution (Å)	30.75 – 2.15 30.75 – 2.15	Depositor EDS
% Data completeness (in resolution range)	97.4 (30.75-2.15) 96.9 (30.75-2.15)	Depositor EDS
$R_{merge}$	0.09	Depositor
$R_{sym}$	0.09	Depositor
$\langle I/\sigma(I) \rangle$ <sup>1</sup>	2.52 (at 2.16Å)	Xtriage
Refinement program	PHENIX	Depositor
R, $R_{free}$	0.193 , 0.234 0.189 , 0.230	Depositor DCC
$R_{free}$ test set	3048 reflections (5.05%)	wwPDB-VP
Wilson B-factor (Å <sup>2</sup> )	25.9	Xtriage
Anisotropy	0.236	Xtriage
Bulk solvent $k_{sol}$ (e/Å <sup>3</sup> ), $B_{sol}$ (Å <sup>2</sup> )	0.35 , 27.0	EDS
L-test for twinning <sup>2</sup>	$\langle  L  \rangle = 0.49$ , $\langle L^2 \rangle = 0.32$	Xtriage
Estimated twinning fraction	0.467 for -h,-l,-k 0.015 for l,-k,h 0.016 for -k,-h,-l 0.012 for k,-l,-h 0.012 for -l,h,-k	Xtriage
$F_o, F_c$ correlation	0.96	EDS
Total number of atoms	6480	wwPDB-VP
Average B, all atoms (Å <sup>2</sup> )	33.0	wwPDB-VP

Xtriage's analysis on translational NCS is as follows: *The largest off-origin peak in the Patterson function is 4.25% of the height of the origin peak. No significant pseudotranslation is detected.*

<sup>1</sup>Intensities estimated from amplitudes.

<sup>2</sup>Theoretical values of  $\langle |L| \rangle$ ,  $\langle L^2 \rangle$  for acentric reflections are 0.5, 0.333 respectively for untwinned datasets, and 0.375, 0.2 for perfectly twinned datasets.

## 5 Model quality

### 5.1 Standard geometry

Bond lengths and bond angles in the following residue types are not validated in this section: LYX, FDA

The Z score for a bond length (or angle) is the number of standard deviations the observed value is removed from the expected value. A bond length (or angle) with  $|Z| > 5$  is considered an outlier worth inspection. RMSZ is the root-mean-square of all Z scores of the bond lengths (or angles).

Mol	Chain	Bond lengths		Bond angles	
		RMSZ	# Z  >5	RMSZ	# Z  >5
1	A	0.43	0/3109	0.74	0/4231
1	B	0.44	0/3122	0.73	0/4246
All	All	0.44	0/6231	0.74	0/8477

There are no bond length outliers.

There are no bond angle outliers.

There are no chirality outliers.

There are no planarity outliers.

### 5.2 Too-close contacts

In the following table, the Non-H and H(model) columns list the number of non-hydrogen atoms and hydrogen atoms in the chain respectively. The H(added) column lists the number of hydrogen atoms added and optimized by MolProbity. The Clashes column lists the number of clashes within the asymmetric unit, whereas Symm-Clashes lists symmetry-related clashes.

Mol	Chain	Non-H	H(model)	H(added)	Clashes	Symm-Clashes
1	A	3060	0	2965	26	0
1	B	3073	0	2985	36	0
2	A	53	0	32	2	0
2	B	53	0	32	2	0
3	A	124	0	0	0	0
3	B	117	0	0	0	0
All	All	6480	0	6014	62	0

The all-atom clashscore is defined as the number of clashes found per 1000 atoms (including hydrogen atoms). The all-atom clashscore for this structure is 5.

The worst 5 of 62 close contacts within the same asymmetric unit are listed below, sorted by their

clash magnitude.

Atom-1	Atom-2	Interatomic distance (Å)	Clash overlap (Å)
1:A:516:MET:HE3	1:A:567:VAL:HG11	1.74	0.70
1:A:135:LEU:HD23	1:A:570:ILE:HD13	1.74	0.68
1:A:518:GLU:O	1:A:522:GLU:HG2	1.99	0.62
1:B:135:LEU:HD23	1:B:570:ILE:HD13	1.84	0.60
1:A:263:GLU:OE2	1:A:546:HIS:HD2	1.86	0.58

There are no symmetry-related clashes.

## 5.3 Torsion angles [i](#)

### 5.3.1 Protein backbone [i](#)

In the following table, the Percentiles column shows the percent Ramachandran outliers of the chain as a percentile score with respect to all X-ray entries followed by that with respect to entries of similar resolution.

The Analysed column shows the number of residues for which the backbone conformation was analysed, and the total number of residues.

Mol	Chain	Analysed	Favoured	Allowed	Outliers	Percentiles	
1	A	393/602 (65%)	385 (98%)	7 (2%)	1 (0%)	36	34
1	B	395/602 (66%)	386 (98%)	8 (2%)	1 (0%)	36	34
All	All	788/1204 (65%)	771 (98%)	15 (2%)	2 (0%)	36	34

All (2) Ramachandran outliers are listed below:

Mol	Chain	Res	Type
1	B	548	THR
1	A	548	THR

### 5.3.2 Protein sidechains [i](#)

In the following table, the Percentiles column shows the percent sidechain outliers of the chain as a percentile score with respect to all X-ray entries followed by that with respect to entries of similar resolution.

The Analysed column shows the number of residues for which the sidechain conformation was analysed, and the total number of residues.

Mol	Chain	Analysed	Rotameric	Outliers	Percentiles	
1	A	303/489 (62%)	296 (98%)	7 (2%)	44	49
1	B	303/489 (62%)	297 (98%)	6 (2%)	48	54
All	All	606/978 (62%)	593 (98%)	13 (2%)	45	52

5 of 13 residues with a non-rotameric sidechain are listed below:

Mol	Chain	Res	Type
1	B	287	LEU
1	B	327	SER
1	B	593	GLN
1	B	361	ARG
1	B	406	TYR

Sometimes sidechains can be flipped to improve hydrogen bonding and reduce clashes. 5 of 20 such sidechains are listed below:

Mol	Chain	Res	Type
1	B	497	GLN
1	B	546	HIS
1	B	594	GLN
1	B	568	ASN
1	A	514	HIS

### 5.3.3 RNA [i](#)

There are no RNA molecules in this entry.

## 5.4 Non-standard residues in protein, DNA, RNA chains [i](#)

2 non-standard protein/DNA/RNA residues are modelled in this entry.

In the following table, the Counts columns list the number of bonds (or angles) for which Mogul statistics could be retrieved, the number of bonds (or angles) that are observed in the model and the number of bonds (or angles) that are defined in the Chemical Component Dictionary. The Link column lists molecule types, if any, to which the group is linked. The Z score for a bond length (or angle) is the number of standard deviations the observed value is removed from the expected value. A bond length (or angle) with  $|Z| > 2$  is considered an outlier worth inspection. RMSZ is the root-mean-square of all Z scores of the bond lengths (or angles).

Mol	Type	Chain	Res	Link	Bond lengths			Bond angles		
					Counts	RMSZ	$\# Z  > 2$	Counts	RMSZ	$\# Z  > 2$
1	LYX	A	329	1,2	10,11,64	2.04	2 (20%)	5,11,93	1.18	0

Mol	Type	Chain	Res	Link	Bond lengths			Bond angles		
					Counts	RMSZ	# Z  > 2	Counts	RMSZ	# Z  > 2
1	LYX	B	329	1,2	10,11,64	2.01	2 (20%)	5,11,93	1.11	0

In the following table, the Chirals column lists the number of chiral outliers, the number of chiral centers analysed, the number of these observed in the model and the number defined in the Chemical Component Dictionary. Similar counts are reported in the Torsion and Rings columns. '-' means no outliers of that kind were identified.

Mol	Type	Chain	Res	Link	Chirals	Torsions	Rings
1	LYX	A	329	1,2	-	0/9/10/83	-
1	LYX	B	329	1,2	-	0/9/10/83	-

All (4) bond length outliers are listed below:

Mol	Chain	Res	Type	Atoms	Z	Observed(Å)	Ideal(Å)
1	A	329	LYX	C23-NZ	-5.78	1.27	1.47
1	B	329	LYX	C23-NZ	-5.70	1.28	1.47
1	B	329	LYX	C22-C21	-2.27	1.34	1.50
1	A	329	LYX	C22-C21	-2.27	1.34	1.50

There are no bond angle outliers.

There are no chirality outliers.

There are no torsion outliers.

There are no ring outliers.

No monomer is involved in short contacts.

## 5.5 Carbohydrates [\(i\)](#)

There are no oligosaccharides in this entry.

## 5.6 Ligand geometry [\(i\)](#)

2 ligands are modelled in this entry.

In the following table, the Counts columns list the number of bonds (or angles) for which Mogul statistics could be retrieved, the number of bonds (or angles) that are observed in the model and the number of bonds (or angles) that are defined in the Chemical Component Dictionary. The Link column lists molecule types, if any, to which the group is linked. The Z score for a bond length (or angle) is the number of standard deviations the observed value is removed from the

expected value. A bond length (or angle) with  $|Z| > 2$  is considered an outlier worth inspection. RMSZ is the root-mean-square of all Z scores of the bond lengths (or angles).

Mol	Type	Chain	Res	Link	Bond lengths			Bond angles		
					Counts	RMSZ	# Z  > 2	Counts	RMSZ	# Z  > 2
2	FDA	B	2002	1	57,58,58	1.03	5 (8%)	78,89,89	1.63	14 (17%)
2	FDA	A	2001	1	57,58,58	1.08	5 (8%)	78,89,89	1.64	15 (19%)

In the following table, the Chirals column lists the number of chiral outliers, the number of chiral centers analysed, the number of these observed in the model and the number defined in the Chemical Component Dictionary. Similar counts are reported in the Torsion and Rings columns. '-' means no outliers of that kind were identified.

Mol	Type	Chain	Res	Link	Chirals	Torsions	Rings
2	FDA	B	2002	1	-	2/34/50/50	0/6/6/6
2	FDA	A	2001	1	-	2/34/50/50	0/6/6/6

The worst 5 of 10 bond length outliers are listed below:

Mol	Chain	Res	Type	Atoms	Z	Observed(Å)	Ideal(Å)
2	A	2001	FDA	P-O3P	2.82	1.62	1.59
2	A	2001	FDA	PA-O3P	2.70	1.62	1.59
2	B	2002	FDA	C4X-C4	2.54	1.49	1.41
2	A	2001	FDA	C4-N3	-2.44	1.34	1.38
2	A	2001	FDA	C4X-C4	2.41	1.49	1.41

The worst 5 of 29 bond angle outliers are listed below:

Mol	Chain	Res	Type	Atoms	Z	Observed(°)	Ideal(°)
2	A	2001	FDA	N3A-C2A-N1A	-5.16	120.78	128.58
2	B	2002	FDA	C5A-C4A-N3A	-5.06	119.75	126.72
2	B	2002	FDA	N3A-C2A-N1A	-5.05	120.94	128.58
2	A	2001	FDA	C5A-C4A-N3A	-5.00	119.83	126.72
2	B	2002	FDA	N3-C2-N1	3.91	121.89	115.74

There are no chirality outliers.

All (4) torsion outliers are listed below:

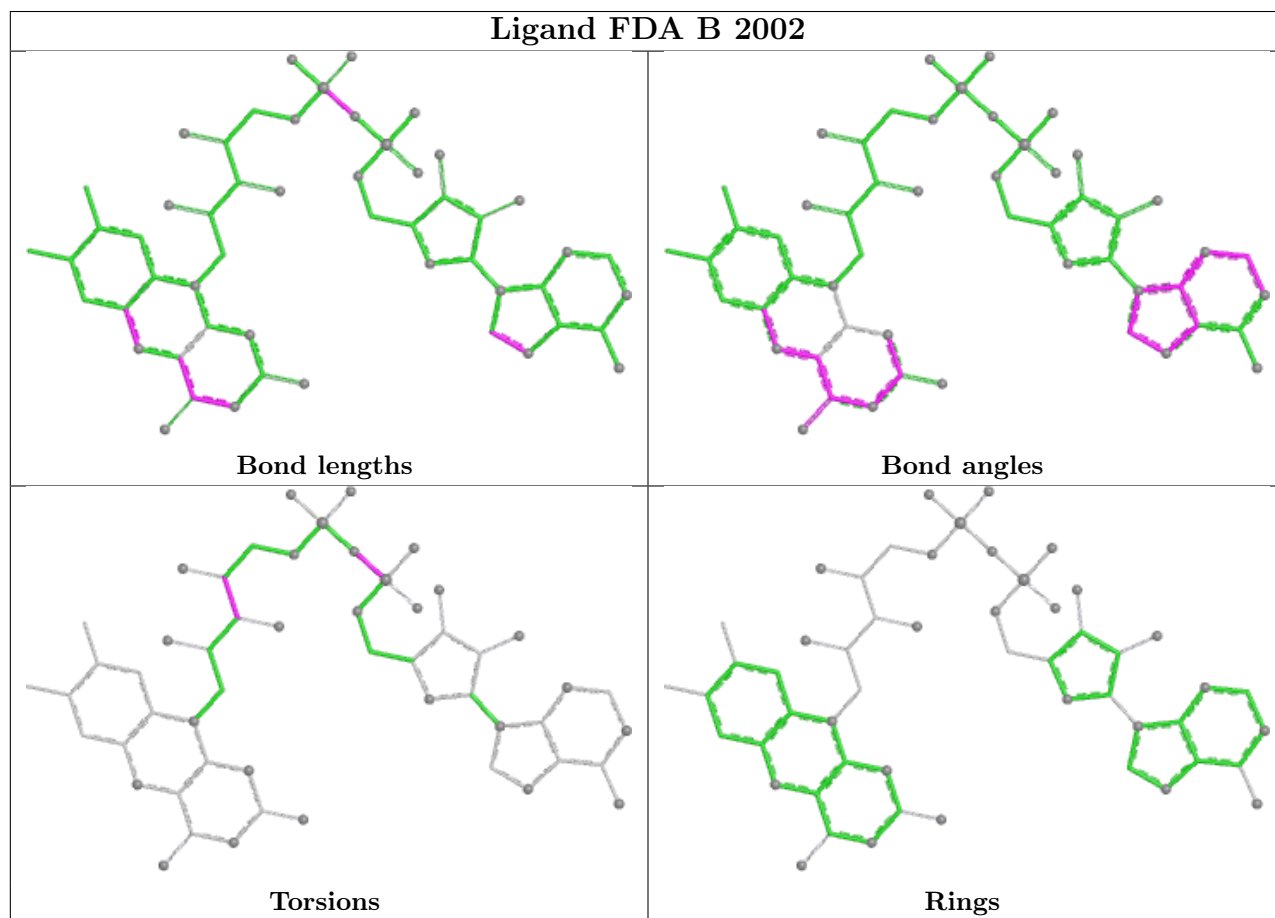
Mol	Chain	Res	Type	Atoms
2	B	2002	FDA	P-O3P-PA-O5B
2	A	2001	FDA	P-O3P-PA-O5B
2	B	2002	FDA	C2'-C3'-C4'-O4'
2	A	2001	FDA	C3B-C4B-C5B-O5B

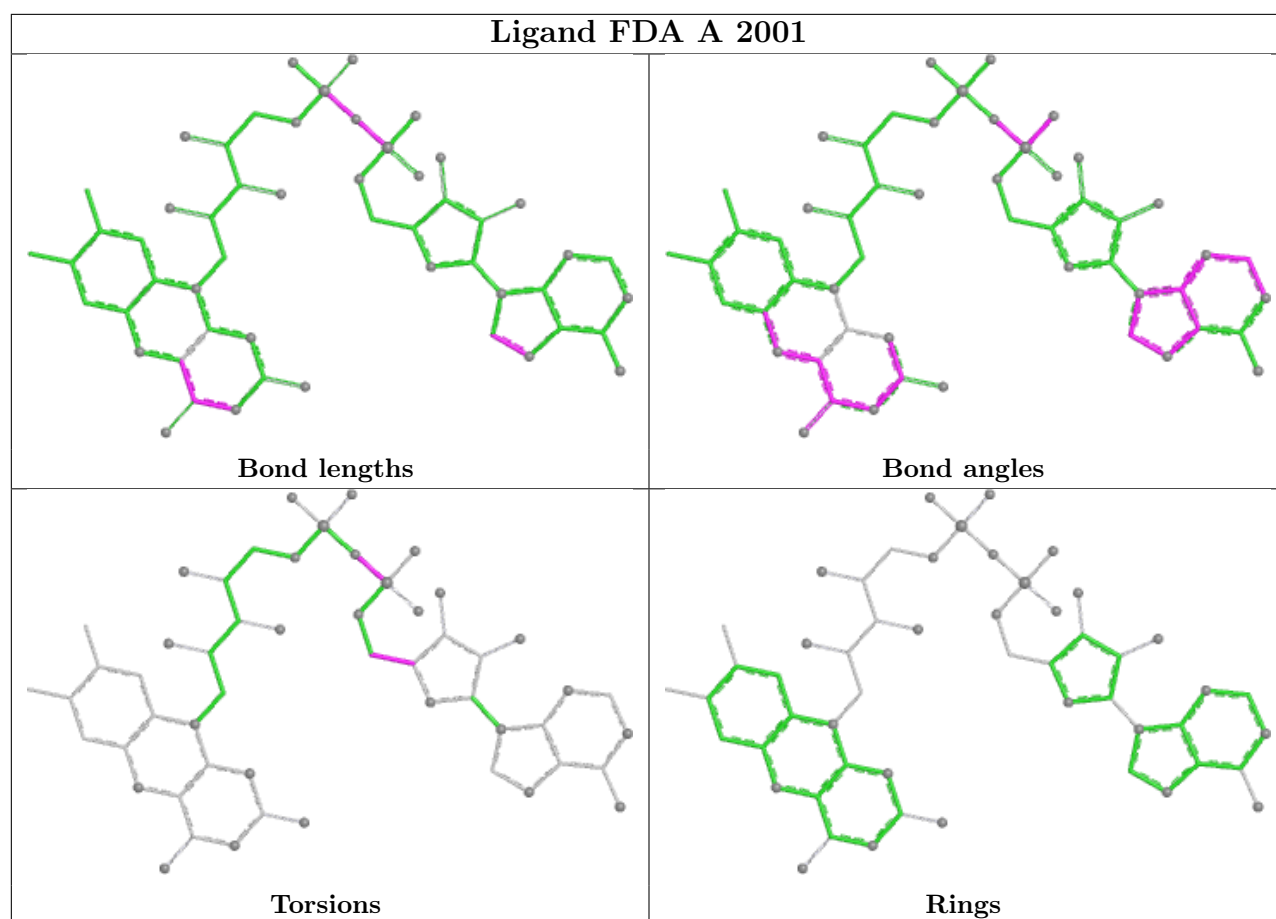
There are no ring outliers.

2 monomers are involved in 4 short contacts:

Mol	Chain	Res	Type	Clashes	Symm-Clashes
2	B	2002	FDA	2	0
2	A	2001	FDA	2	0

The following is a two-dimensional graphical depiction of Mogul quality analysis of bond lengths, bond angles, torsion angles, and ring geometry for all instances of the Ligand of Interest. In addition, ligands with molecular weight > 250 and outliers as shown on the validation Tables will also be included. For torsion angles, if less than 5% of the Mogul distribution of torsion angles is within 10 degrees of the torsion angle in question, then that torsion angle is considered an outlier. Any bond that is central to one or more torsion angles identified as an outlier by Mogul will be highlighted in the graph. For rings, the root-mean-square deviation (RMSD) between the ring in question and similar rings identified by Mogul is calculated over all ring torsion angles. If the average RMSD is greater than 60 degrees and the minimal RMSD between the ring in question and any Mogul-identified rings is also greater than 60 degrees, then that ring is considered an outlier. The outliers are highlighted in purple. The color gray indicates Mogul did not find sufficient equivalents in the CSD to analyse the geometry.





## 5.7 Other polymers [i](#)

There are no such residues in this entry.

## 5.8 Polymer linkage issues [i](#)

There are no chain breaks in this entry.

## 6 Fit of model and data [i](#)

### 6.1 Protein, DNA and RNA chains [i](#)

In the following table, the column labelled ‘#RSRZ> 2’ contains the number (and percentage) of RSRZ outliers, followed by percent RSRZ outliers for the chain as percentile scores relative to all X-ray entries and entries of similar resolution. The OWAB column contains the minimum, median, 95<sup>th</sup> percentile and maximum values of the occupancy-weighted average B-factor per residue. The column labelled ‘Q< 0.9’ lists the number of (and percentage) of residues with an average occupancy less than 0.9.

Mol	Chain	Analysed	<RSRZ>	#RSRZ>2	OWAB(Å <sup>2</sup> )	Q<0.9
1	A	398/602 (66%)	-1.34	0 <a href="#">100</a> <a href="#">100</a>	11, 30, 68, 102	1 (0%)
1	B	400/602 (66%)	-1.34	0 <a href="#">100</a> <a href="#">100</a>	10, 30, 70, 106	1 (0%)
All	All	798/1204 (66%)	-1.34	0 <a href="#">100</a> <a href="#">100</a>	10, 30, 69, 106	2 (0%)

There are no RSRZ outliers to report.

### 6.2 Non-standard residues in protein, DNA, RNA chains [i](#)

In the following table, the Atoms column lists the number of modelled atoms in the group and the number defined in the chemical component dictionary. The B-factors column lists the minimum, median, 95<sup>th</sup> percentile and maximum values of B factors of atoms in the group. The column labelled ‘Q< 0.9’ lists the number of atoms with occupancy less than 0.9.

Mol	Type	Chain	Res	Atoms	RSCC	RSR	B-factors(Å <sup>2</sup> )	Q<0.9
1	LYX	A	329	12/62	0.99	0.03	20,24,34,35	0
1	LYX	B	329	12/62	0.99	0.04	18,25,35,38	0

### 6.3 Carbohydrates [i](#)

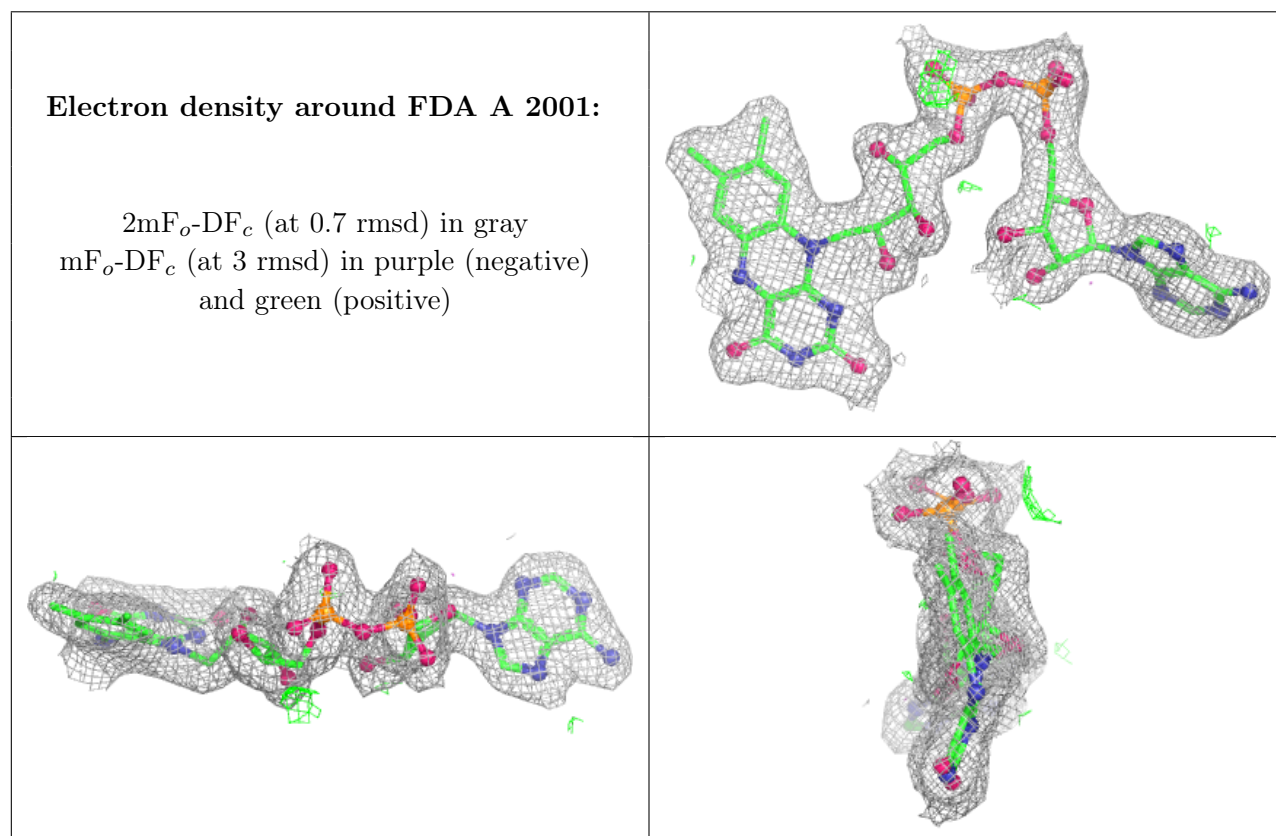
There are no oligosaccharides in this entry.

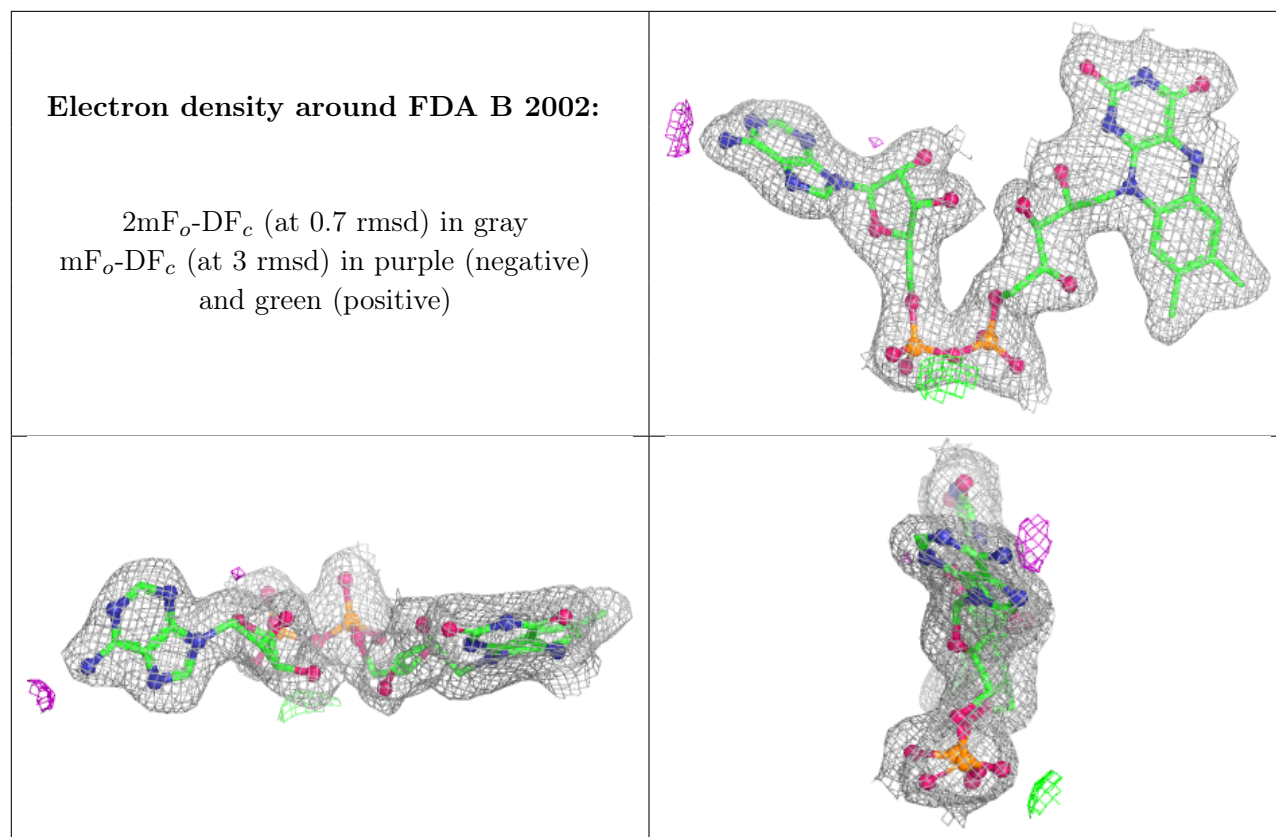
### 6.4 Ligands [i](#)

In the following table, the Atoms column lists the number of modelled atoms in the group and the number defined in the chemical component dictionary. The B-factors column lists the minimum, median, 95<sup>th</sup> percentile and maximum values of B factors of atoms in the group. The column labelled ‘Q< 0.9’ lists the number of atoms with occupancy less than 0.9.

Mol	Type	Chain	Res	Atoms	RSCC	RSR	B-factors( $\text{\AA}^2$ )	Q<0.9
2	FDA	A	2001	53/53	1.00	0.03	17,25,34,35	0
2	FDA	B	2002	53/53	1.00	0.03	17,25,34,37	0

The following is a graphical depiction of the model fit to experimental electron density of all instances of the Ligand of Interest. In addition, ligands with molecular weight > 250 and outliers as shown on the geometry validation Tables will also be included. Each fit is shown from different orientation to approximate a three-dimensional view.





## 6.5 Other polymers [i](#)

There are no such residues in this entry.