



# wwPDB X-ray Structure Validation Summary Report ⓘ

Mar 8, 2026 – 01:13 PM UTC

PDB ID : 5ITP / pdb\_00005itp  
Title : Structure of the periplasmic binding protein NocT from *A.tumefaciens* in complex with octopine  
Authors : Vigouroux, A.; Morera, S.  
Deposited on : 2016-03-17  
Resolution : 1.85 Å(reported)

This is a wwPDB X-ray Structure Validation Summary Report for a publicly released PDB entry.

We welcome your comments at [validation@mail.wwpdb.org](mailto:validation@mail.wwpdb.org)

A user guide is available at

<https://www.wwpdb.org/validation/2017/XrayValidationReportHelp>

with specific help available everywhere you see the ⓘ symbol.

The types of validation reports are described at

<http://www.wwpdb.org/validation/2017/FAQs#types>.

---

The following versions of software and data (see [references ⓘ](#)) were used in the production of this report:

MolProbity : 4-5-2 with Phenix2.0  
Mogul : 2022.3.0, CSD as543be (2022)  
Xtriage (Phenix) : 2.0  
EDS : 3.0  
Percentile statistics : 20250101.v01 (using entries in the PDB archive January 1st 2025)  
CCP4 : 9.0.010 (Gargrove)  
Density-Fitness : 1.0.12  
Ideal geometry (proteins) : Engh & Huber (2001)  
Ideal geometry (DNA, RNA) : Parkinson et al. (1996)  
Validation Pipeline (wwPDB-VP) : 2.49

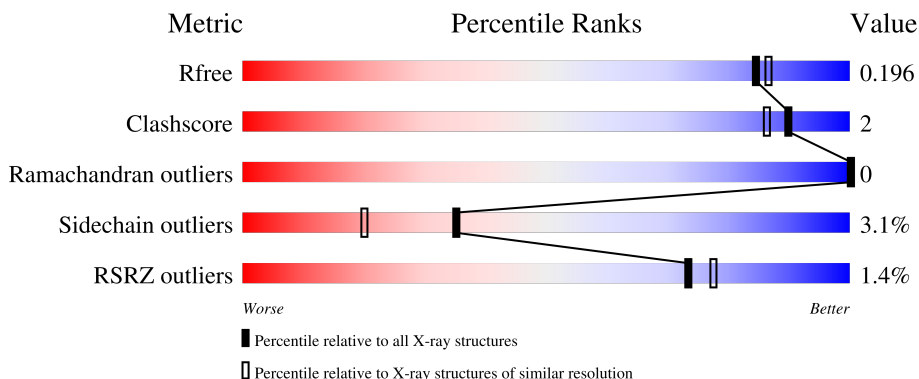
# 1 Overall quality at a glance

The following experimental techniques were used to determine the structure:

*X-RAY DIFFRACTION*

The reported resolution of this entry is 1.85 Å.

Percentile scores (ranging between 0-100) for global validation metrics of the entry are shown in the following graphic. The table shows the number of entries on which the scores are based.



Metric	Whole archive (#Entries)	Similar resolution (#Entries, resolution range(Å))
$R_{free}$	180053	3428 (1.86-1.86)
Clashscore	190562	3579 (1.86-1.86)
Ramachandran outliers	187476	3553 (1.86-1.86)
Sidechain outliers	187428	3553 (1.86-1.86)
RSRZ outliers	180081	3429 (1.86-1.86)

The table below summarises the geometric issues observed across the polymeric chains and their fit to the electron density. The red, orange, yellow and green segments of the lower bar indicate the fraction of residues that contain outliers for  $\geq 3$ , 2, 1 and 0 types of geometric quality criteria respectively. A grey segment represents the fraction of residues that are not modelled. The numeric value for each fraction is indicated below the corresponding segment, with a dot representing fractions  $\leq 5\%$ . The upper red bar (where present) indicates the fraction of residues that have poor fit to the electron density. The numeric value is given above the bar.

Mol	Chain	Length	Quality of chain
1	A	265	 89% 6% . .
1	B	265	 89% 6% . .

## 2 Entry composition

There are 5 unique types of molecules in this entry. The entry contains 4227 atoms, of which 0 are hydrogens and 0 are deuteriums.

In the tables below, the ZeroOcc column contains the number of atoms modelled with zero occupancy, the AltConf column contains the number of residues with at least one atom in alternate conformation and the Trace column contains the number of residues modelled with at most 2 atoms.

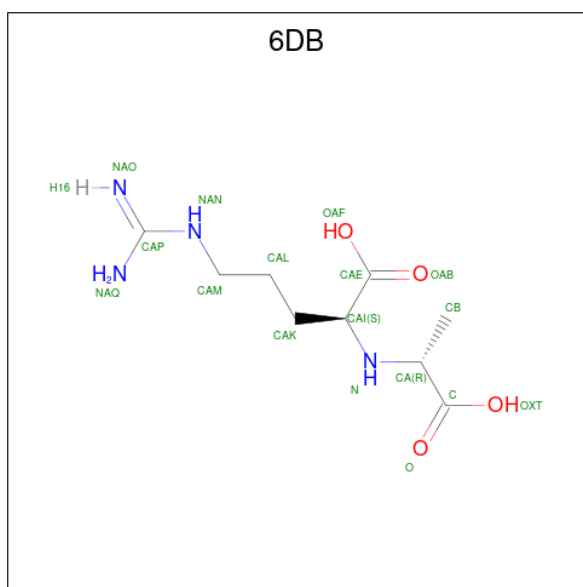
- Molecule 1 is a protein called Nopaline-binding periplasmic protein.

Mol	Chain	Residues	Atoms					ZeroOcc	AltConf	Trace
			Total	C	N	O	S			
1	A	254	1952	1250	318	371	13	0	1	0
1	B	254	1949	1248	318	371	12	0	0	0

There are 14 discrepancies between the modelled and reference sequences:

Chain	Residue	Modelled	Actual	Comment	Reference
A	25	MET	-	initiating methionine	UNP P35120
A	284	HIS	-	expression tag	UNP P35120
A	285	HIS	-	expression tag	UNP P35120
A	286	HIS	-	expression tag	UNP P35120
A	287	HIS	-	expression tag	UNP P35120
A	288	HIS	-	expression tag	UNP P35120
A	289	HIS	-	expression tag	UNP P35120
B	25	MET	-	initiating methionine	UNP P35120
B	284	HIS	-	expression tag	UNP P35120
B	285	HIS	-	expression tag	UNP P35120
B	286	HIS	-	expression tag	UNP P35120
B	287	HIS	-	expression tag	UNP P35120
B	288	HIS	-	expression tag	UNP P35120
B	289	HIS	-	expression tag	UNP P35120

- Molecule 2 is octopine (CCD ID: 6DB) (formula:  $C_9H_{18}N_4O_4$ ).



Mol	Chain	Residues	Atoms			ZeroOcc	AltConf	
2	A	1	Total	C	N	O	0	0
			17	9	4	4		
2	B	1	Total	C	N	O	0	0
			17	9	4	4		

- Molecule 3 is 1,2-ETHANEDIOL (CCD ID: EDO) (formula: C<sub>2</sub>H<sub>6</sub>O<sub>2</sub>).



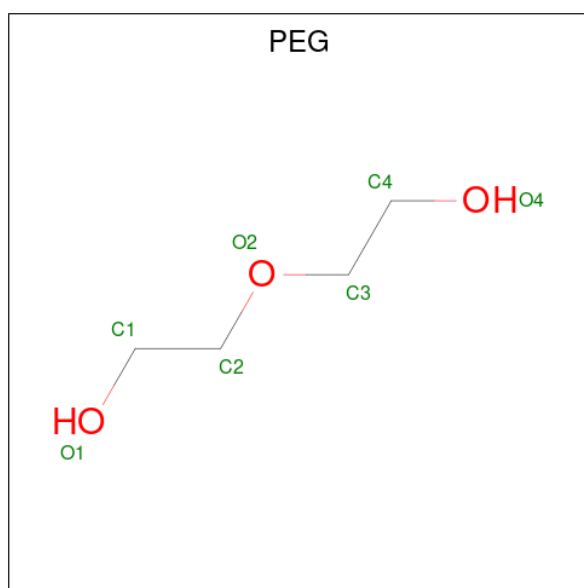
Mol	Chain	Residues	Atoms		ZeroOcc	AltConf	
3	A	1	Total	C	O	0	0
			4	2	2		
3	A	1	Total	C	O	0	0
			4	2	2		

*Continued on next page...*

Continued from previous page...

Mol	Chain	Residues	Atoms			ZeroOcc	AltConf
3	A	1	Total	C	O	0	0
			4	2	2		
3	A	1	Total	C	O	0	0
			4	2	2		
3	A	1	Total	C	O	0	0
			4	2	2		
3	A	1	Total	C	O	0	0
			4	2	2		

- Molecule 4 is DI(HYDROXYETHYL)ETHER (CCD ID: PEG) (formula: C<sub>4</sub>H<sub>10</sub>O<sub>3</sub>).



Mol	Chain	Residues	Atoms			ZeroOcc	AltConf
4	A	1	Total	C	O	0	0
			7	4	3		

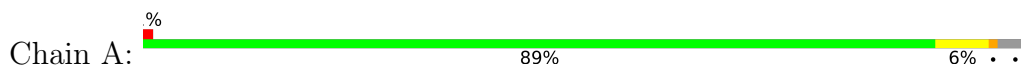
- Molecule 5 is water.

Mol	Chain	Residues	Atoms		ZeroOcc	AltConf
5	A	186	Total	O	0	0
			186	186		
5	B	71	Total	O	0	0
			71	71		

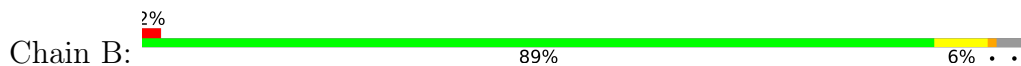
### 3 Residue-property plots [i](#)

These plots are drawn for all protein, RNA, DNA and oligosaccharide chains in the entry. The first graphic for a chain summarises the proportions of the various outlier classes displayed in the second graphic. The second graphic shows the sequence view annotated by issues in geometry and electron density. Residues are color-coded according to the number of geometric quality criteria for which they contain at least one outlier: green = 0, yellow = 1, orange = 2 and red = 3 or more. A red dot above a residue indicates a poor fit to the electron density ( $RSRZ > 2$ ). Stretches of 2 or more consecutive residues without any outlier are shown as a green connector. Residues present in the sample, but not in the model, are shown in grey.

- Molecule 1: Nopaline-binding periplasmic protein



- Molecule 1: Nopaline-binding periplasmic protein



## 4 Data and refinement statistics

Property	Value	Source
Space group	P 32	Depositor
Cell constants a, b, c, $\alpha$ , $\beta$ , $\gamma$	114.64Å 114.64Å 38.08Å 90.00° 90.00° 120.00°	Depositor
Resolution (Å)	27.09 – 1.85 27.09 – 1.85	Depositor EDS
% Data completeness (in resolution range)	99.8 (27.09-1.85) 99.7 (27.09-1.85)	Depositor EDS
$R_{merge}$	0.07	Depositor
$R_{sym}$	(Not available)	Depositor
$\langle I/\sigma(I) \rangle$ <sup>1</sup>	0.99 (at 1.84Å)	Xtrriage
Refinement program	BUSTER 2.10.0	Depositor
R, $R_{free}$	0.177 , 0.195 0.175 , 0.196	Depositor DCC
$R_{free}$ test set	2386 reflections (5.00%)	wwPDB-VP
Wilson B-factor (Å <sup>2</sup> )	31.2	Xtrriage
Anisotropy	0.161	Xtrriage
Bulk solvent $k_{sol}$ (e/Å <sup>3</sup> ), $B_{sol}$ (Å <sup>2</sup> )	0.36 , 37.4	EDS
L-test for twinning <sup>2</sup>	$\langle  L  \rangle = 0.49$ , $\langle L^2 \rangle = 0.32$	Xtrriage
Estimated twinning fraction	0.027 for -h,-k,l 0.026 for h,-h-k,-l 0.014 for -k,-h,-l	Xtrriage
$F_o, F_c$ correlation	0.97	EDS
Total number of atoms	4227	wwPDB-VP
Average B, all atoms (Å <sup>2</sup> )	41.0	wwPDB-VP

Xtrriage's analysis on translational NCS is as follows: *The largest off-origin peak in the Patterson function is 3.68% of the height of the origin peak. No significant pseudotranslation is detected.*

<sup>1</sup>Intensities estimated from amplitudes.

<sup>2</sup>Theoretical values of  $\langle |L| \rangle$ ,  $\langle L^2 \rangle$  for acentric reflections are 0.5, 0.333 respectively for untwinned datasets, and 0.375, 0.2 for perfectly twinned datasets.

## 5 Model quality [i](#)

### 5.1 Standard geometry [i](#)

Bond lengths and bond angles in the following residue types are not validated in this section: 6DB, EDO, PEG

The Z score for a bond length (or angle) is the number of standard deviations the observed value is removed from the expected value. A bond length (or angle) with  $|Z| > 5$  is considered an outlier worth inspection. RMSZ is the root-mean-square of all Z scores of the bond lengths (or angles).

Mol	Chain	Bond lengths		Bond angles	
		RMSZ	# Z  >5	RMSZ	# Z  >5
1	A	0.83	0/1993	1.11	3/2691 (0.1%)
1	B	0.79	0/1987	1.16	3/2683 (0.1%)
All	All	0.81	0/3980	1.13	6/5374 (0.1%)

There are no bond length outliers.

The worst 5 of 6 bond angle outliers are listed below:

Mol	Chain	Res	Type	Atoms	Z	Observed(°)	Ideal(°)
1	A	219	ASP	CA-CB-CG	6.94	119.54	112.60
1	A	46	ASP	CA-CB-CG	6.60	119.20	112.60
1	B	219	ASP	CA-CB-CG	6.39	118.99	112.60
1	B	46	ASP	CA-CB-CG	6.22	118.82	112.60
1	B	211	LEU	N-CA-C	5.73	117.61	111.36

There are no chirality outliers.

There are no planarity outliers.

### 5.2 Too-close contacts [i](#)

In the following table, the Non-H and H(model) columns list the number of non-hydrogen atoms and hydrogen atoms in the chain respectively. The H(added) column lists the number of hydrogen atoms added and optimized by MolProbity. The Clashes column lists the number of clashes within the asymmetric unit, whereas Symm-Clashes lists symmetry-related clashes.

Mol	Chain	Non-H	H(model)	H(added)	Clashes	Symm-Clashes
1	A	1952	0	1971	9	0
1	B	1949	0	1966	5	0
2	A	17	0	0	0	0
2	B	17	0	0	0	0

*Continued on next page...*

Continued from previous page...

Mol	Chain	Non-H	H(model)	H(added)	Clashes	Symm-Clashes
3	A	28	0	42	1	0
4	A	7	0	10	1	0
5	A	186	0	0	1	0
5	B	71	0	0	0	0
All	All	4227	0	3989	14	0

The all-atom clashscore is defined as the number of clashes found per 1000 atoms (including hydrogen atoms). The all-atom clashscore for this structure is 2.

The worst 5 of 14 close contacts within the same asymmetric unit are listed below, sorted by their clash magnitude.

Atom-1	Atom-2	Interatomic distance (Å)	Clash overlap (Å)
1:A:135:GLU:HB3	3:A:306:EDO:H22	1.61	0.83
1:B:160:VAL:HG13	1:B:202:ASP:HB2	1.86	0.56
1:B:162:PHE:HB3	1:B:183:ILE:HG22	1.90	0.53
1:A:66:MET:HB3	1:A:68:ILE:HD12	1.91	0.53
1:A:99:GLN:HE22	1:A:101:ALA:HB3	1.75	0.51

There are no symmetry-related clashes.

## 5.3 Torsion angles [i](#)

### 5.3.1 Protein backbone [i](#)

In the following table, the Percentiles column shows the percent Ramachandran outliers of the chain as a percentile score with respect to all X-ray entries followed by that with respect to entries of similar resolution.

The Analysed column shows the number of residues for which the backbone conformation was analysed, and the total number of residues.

Mol	Chain	Analysed	Favoured	Allowed	Outliers	Percentiles	
1	A	253/265 (96%)	250 (99%)	3 (1%)	0	100	100
1	B	252/265 (95%)	247 (98%)	5 (2%)	0	100	100
All	All	505/530 (95%)	497 (98%)	8 (2%)	0	100	100

There are no Ramachandran outliers to report.

### 5.3.2 Protein sidechains [i](#)

In the following table, the Percentiles column shows the percent sidechain outliers of the chain as a percentile score with respect to all X-ray entries followed by that with respect to entries of similar resolution.

The Analysed column shows the number of residues for which the sidechain conformation was analysed, and the total number of residues.

Mol	Chain	Analysed	Rotameric	Outliers	Percentiles	
1	A	209/219 (95%)	204 (98%)	5 (2%)	43	28
1	B	208/219 (95%)	200 (96%)	8 (4%)	29	14
All	All	417/438 (95%)	404 (97%)	13 (3%)	35	20

5 of 13 residues with a non-rotameric sidechain are listed below:

Mol	Chain	Res	Type
1	B	88	ARG
1	B	160	VAL
1	B	237	LYS
1	B	221	LYS
1	B	234	LEU

Sometimes sidechains can be flipped to improve hydrogen bonding and reduce clashes. 5 of 6 such sidechains are listed below:

Mol	Chain	Res	Type
1	B	75	GLN
1	B	272	GLN
1	B	273	GLN
1	A	99	GLN
1	A	75	GLN

### 5.3.3 RNA [i](#)

There are no RNA molecules in this entry.

## 5.4 Non-standard residues in protein, DNA, RNA chains [i](#)

There are no non-standard protein/DNA/RNA residues in this entry.

## 5.5 Carbohydrates [i](#)

There are no oligosaccharides in this entry.

## 5.6 Ligand geometry [i](#)

10 ligands are modelled in this entry.

In the following table, the Counts columns list the number of bonds (or angles) for which Mogul statistics could be retrieved, the number of bonds (or angles) that are observed in the model and the number of bonds (or angles) that are defined in the Chemical Component Dictionary. The Link column lists molecule types, if any, to which the group is linked. The Z score for a bond length (or angle) is the number of standard deviations the observed value is removed from the expected value. A bond length (or angle) with  $|Z| > 2$  is considered an outlier worth inspection. RMSZ is the root-mean-square of all Z scores of the bond lengths (or angles).

Mol	Type	Chain	Res	Link	Bond lengths			Bond angles		
					Counts	RMSZ	# Z  > 2	Counts	RMSZ	# Z  > 2
3	EDO	A	306	-	3,3,3	0.43	0	2,2,2	0.29	0
2	6DB	B	301	-	16,16,16	1.68	1 (6%)	17,20,20	1.10	0
3	EDO	A	307	-	3,3,3	0.51	0	2,2,2	0.26	0
3	EDO	A	308	-	3,3,3	0.56	0	2,2,2	0.29	0
3	EDO	A	305	-	3,3,3	0.45	0	2,2,2	0.47	0
3	EDO	A	302	-	3,3,3	0.59	0	2,2,2	0.28	0
4	PEG	A	309	-	6,6,6	0.18	0	5,5,5	0.12	0
3	EDO	A	304	-	3,3,3	0.52	0	2,2,2	0.37	0
3	EDO	A	303	-	3,3,3	0.56	0	2,2,2	0.23	0
2	6DB	A	301	-	16,16,16	1.61	1 (6%)	17,20,20	1.16	1 (5%)

In the following table, the Chirals column lists the number of chiral outliers, the number of chiral centers analysed, the number of these observed in the model and the number defined in the Chemical Component Dictionary. Similar counts are reported in the Torsion and Rings columns. '-' means no outliers of that kind were identified.

Mol	Type	Chain	Res	Link	Chirals	Torsions	Rings
3	EDO	A	306	-	-	1/1/1/1	-
2	6DB	B	301	-	-	2/19/19/19	-
3	EDO	A	307	-	-	1/1/1/1	-
3	EDO	A	308	-	-	0/1/1/1	-
3	EDO	A	305	-	-	0/1/1/1	-
3	EDO	A	302	-	-	1/1/1/1	-
4	PEG	A	309	-	-	2/4/4/4	-
3	EDO	A	304	-	-	0/1/1/1	-
3	EDO	A	303	-	-	0/1/1/1	-

*Continued on next page...*

Continued from previous page...

Mol	Type	Chain	Res	Link	Chirals	Torsions	Rings
2	6DB	A	301	-	-	1/19/19/19	-

All (2) bond length outliers are listed below:

Mol	Chain	Res	Type	Atoms	Z	Observed(Å)	Ideal(Å)
2	B	301	6DB	CAP-NAN	5.63	1.44	1.33
2	A	301	6DB	CAP-NAN	5.27	1.43	1.33

All (1) bond angle outliers are listed below:

Mol	Chain	Res	Type	Atoms	Z	Observed(°)	Ideal(°)
2	A	301	6DB	OXT-C-CA	2.23	121.19	113.84

There are no chirality outliers.

5 of 8 torsion outliers are listed below:

Mol	Chain	Res	Type	Atoms
4	A	309	PEG	O2-C3-C4-O4
3	A	306	EDO	O1-C1-C2-O2
3	A	302	EDO	O1-C1-C2-O2
2	B	301	6DB	CAK-CAL-CAM-NAN
4	A	309	PEG	O1-C1-C2-O2

There are no ring outliers.

2 monomers are involved in 2 short contacts:

Mol	Chain	Res	Type	Clashes	Symm-Clashes
3	A	306	EDO	1	0
4	A	309	PEG	1	0

## 5.7 Other polymers [i](#)

There are no such residues in this entry.

## 5.8 Polymer linkage issues [i](#)

There are no chain breaks in this entry.

## 6 Fit of model and data [i](#)

### 6.1 Protein, DNA and RNA chains [i](#)

In the following table, the column labelled ‘#RSRZ > 2’ contains the number (and percentage) of RSRZ outliers, followed by percent RSRZ outliers for the chain as percentile scores relative to all X-ray entries and entries of similar resolution. The OWAB column contains the minimum, median, 95<sup>th</sup> percentile and maximum values of the occupancy-weighted average B-factor per residue. The column labelled ‘Q < 0.9’ lists the number of (and percentage) of residues with an average occupancy less than 0.9.

Mol	Chain	Analysed	<RSRZ>	#RSRZ>2	OWAB(Å <sup>2</sup> )	Q<0.9
1	A	254/265 (95%)	-0.35	2 (0%) 82 86	20, 30, 52, 74	1 (0%)
1	B	254/265 (95%)	0.22	5 (1%) 65 68	33, 46, 71, 93	0
All	All	508/530 (95%)	-0.07	7 (1%) 73 77	20, 39, 64, 93	1 (0%)

The worst 5 of 7 RSRZ outliers are listed below:

Mol	Chain	Res	Type	RSRZ
1	A	237	LYS	3.2
1	B	159	GLY	2.7
1	B	78	ASP	2.5
1	B	28	TYR	2.4
1	B	234	LEU	2.3

### 6.2 Non-standard residues in protein, DNA, RNA chains [i](#)

There are no non-standard protein/DNA/RNA residues in this entry.

### 6.3 Carbohydrates [i](#)

There are no oligosaccharides in this entry.

### 6.4 Ligands [i](#)

In the following table, the Atoms column lists the number of modelled atoms in the group and the number defined in the chemical component dictionary. The B-factors column lists the minimum, median, 95<sup>th</sup> percentile and maximum values of B factors of atoms in the group. The column labelled ‘Q < 0.9’ lists the number of atoms with occupancy less than 0.9.

Mol	Type	Chain	Res	Atoms	RSCC	RSR	B-factors( $\text{\AA}^2$ )	Q<0.9
3	EDO	A	303	4/4	0.69	0.19	76,77,77,78	0
3	EDO	A	305	4/4	0.72	0.16	41,42,42,43	0
3	EDO	A	302	4/4	0.80	0.15	51,53,54,56	0
4	PEG	A	309	7/7	0.86	0.13	49,51,54,54	0
3	EDO	A	307	4/4	0.88	0.14	51,52,53,55	0
3	EDO	A	304	4/4	0.88	0.14	56,57,57,58	0
3	EDO	A	308	4/4	0.90	0.12	56,57,60,60	0
3	EDO	A	306	4/4	0.93	0.12	33,37,41,44	0
2	6DB	B	301	17/17	0.96	0.06	32,33,41,43	0
2	6DB	A	301	17/17	0.98	0.04	20,22,25,26	0

## 6.5 Other polymers [\(i\)](#)

There are no such residues in this entry.