



# Full wwPDB X-ray Structure Validation Report ⓘ

Mar 17, 2026 – 06:52 PM UTC

PDB ID : 5ITZ / pdb\_00005itz  
Title : Crystal structure of the SAC domain of CPAP in a complex with Tubulin and Darpin  
Authors : Sharma, A.; Steinmetz, M.O.  
Deposited on : 2016-03-17  
Resolution : 2.20 Å(reported)

This is a Full wwPDB X-ray Structure Validation Report for a publicly released PDB entry.

We welcome your comments at [validation@mail.wwpdb.org](mailto:validation@mail.wwpdb.org)

A user guide is available at

<https://www.wwpdb.org/validation/2017/XrayValidationReportHelp>

with specific help available everywhere you see the ⓘ symbol.

The types of validation reports are described at

<http://www.wwpdb.org/validation/2017/FAQs#types>.

---

The following versions of software and data (see [references ⓘ](#)) were used in the production of this report:

MolProbity : 4-5-2 with Phenix2.0  
Mogul : 2022.3.0, CSD as543be (2022)  
Xtriage (Phenix) : 2.0  
EDS : 3.0  
Buster-report : wwPDB partial adaption of 1.1.7 (2018)  
Percentile statistics : 20250101.v01 (using entries in the PDB archive January 1st 2025)  
CCP4 : 9.0.010 (Gargrove)  
Density-Fitness : 1.0.12  
Ideal geometry (proteins) : Engh & Huber (2001)  
Ideal geometry (DNA, RNA) : Parkinson et al. (1996)  
Validation Pipeline (wwPDB-VP) : 2.49

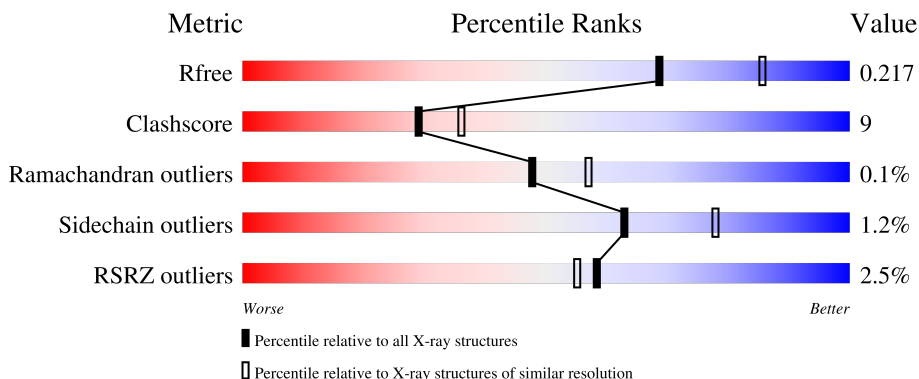
# 1 Overall quality at a glance

The following experimental techniques were used to determine the structure:

*X-RAY DIFFRACTION*

The reported resolution of this entry is 2.20 Å.

Percentile scores (ranging between 0-100) for global validation metrics of the entry are shown in the following graphic. The table shows the number of entries on which the scores are based.



Metric	Whole archive (#Entries)	Similar resolution (#Entries, resolution range(Å))
$R_{free}$	180053	6164 (2.20-2.20)
Clashscore	190562	6851 (2.20-2.20)
Ramachandran outliers	187476	6768 (2.20-2.20)
Sidechain outliers	187428	6769 (2.20-2.20)
RSRZ outliers	180081	6166 (2.20-2.20)

The table below summarises the geometric issues observed across the polymeric chains and their fit to the electron density. The red, orange, yellow and green segments of the lower bar indicate the fraction of residues that contain outliers for  $\geq 3$ , 2, 1 and 0 types of geometric quality criteria respectively. A grey segment represents the fraction of residues that are not modelled. The numeric value for each fraction is indicated below the corresponding segment, with a dot representing fractions  $\leq 5\%$ . The upper red bar (where present) indicates the fraction of residues that have poor fit to the electron density. The numeric value is given above the bar.

Mol	Chain	Length	Quality of chain
1	A	451	 2% 81% 14% 5%
2	B	445	 3% 73% 20% 6%
3	D	129	 10% 90%
4	F	127	 92% 8%

## 2 Entry composition [i](#)

There are 9 unique types of molecules in this entry. The entry contains 8279 atoms, of which 0 are hydrogens and 0 are deuteriums.

In the tables below, the ZeroOcc column contains the number of atoms modelled with zero occupancy, the AltConf column contains the number of residues with at least one atom in alternate conformation and the Trace column contains the number of residues modelled with at most 2 atoms.

- Molecule 1 is a protein called Tubulin alpha-1B chain.

Mol	Chain	Residues	Atoms					ZeroOcc	AltConf	Trace
			Total	C	N	O	S			
1	A	430	3388	2146	575	645	22	0	2	0

- Molecule 2 is a protein called Tubulin beta-2B chain.

Mol	Chain	Residues	Atoms					ZeroOcc	AltConf	Trace
			Total	C	N	O	S			
2	B	420	3294	2072	561	634	27	0	0	0

- Molecule 3 is a protein called Centromere protein J.

Mol	Chain	Residues	Atoms				ZeroOcc	AltConf	Trace
			Total	C	N	O			
3	D	13	101	67	18	16	0	0	0

There are 17 discrepancies between the modelled and reference sequences:

Chain	Residue	Modelled	Actual	Comment	Reference
D	294	MET	-	initiating methionine	UNP Q9HC77
D	295	ALA	-	expression tag	UNP Q9HC77
D	296	HIS	-	expression tag	UNP Q9HC77
D	297	HIS	-	expression tag	UNP Q9HC77
D	298	HIS	-	expression tag	UNP Q9HC77
D	299	HIS	-	expression tag	UNP Q9HC77
D	300	HIS	-	expression tag	UNP Q9HC77
D	301	HIS	-	expression tag	UNP Q9HC77
D	302	GLY	-	expression tag	UNP Q9HC77
D	303	SER	-	expression tag	UNP Q9HC77
D	304	LEU	-	expression tag	UNP Q9HC77
D	305	VAL	-	expression tag	UNP Q9HC77
D	306	PRO	-	expression tag	UNP Q9HC77
D	307	ARG	-	expression tag	UNP Q9HC77

*Continued on next page...*

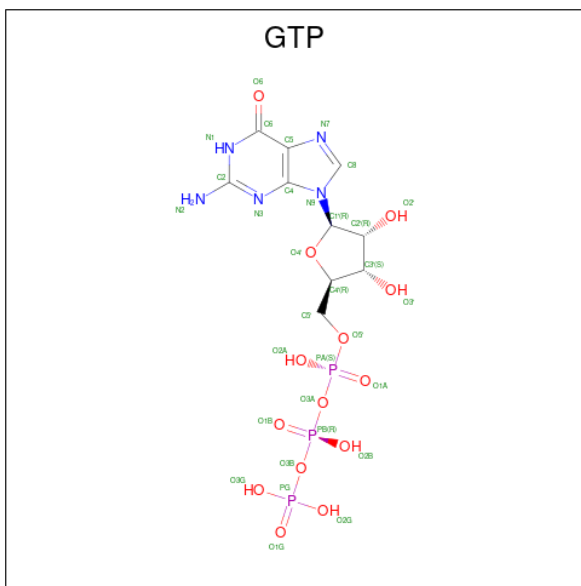
Continued from previous page...

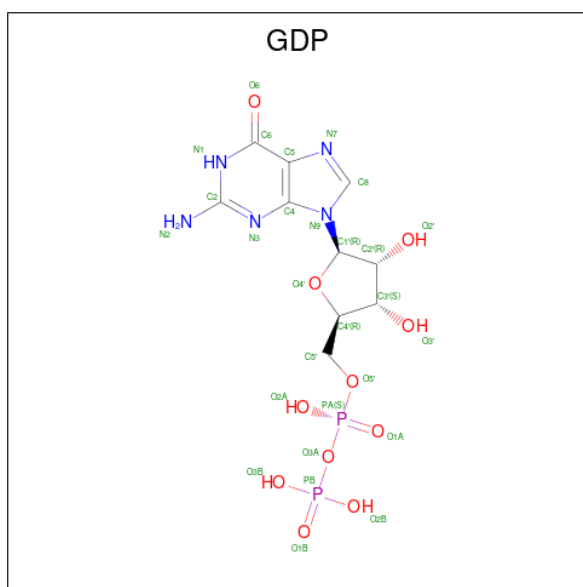
Chain	Residue	Modelled	Actual	Comment	Reference
D	308	GLY	-	expression tag	UNP Q9HC77
D	309	SER	-	expression tag	UNP Q9HC77
D	310	ALA	-	expression tag	UNP Q9HC77

- Molecule 4 is a protein called Designed ankyrin repeat protein (DARPIN) D1.

Mol	Chain	Residues	Atoms					ZeroOcc	AltConf	Trace
			Total	C	N	O	S			
4	F	127	933	591	162	177	3	0	0	0

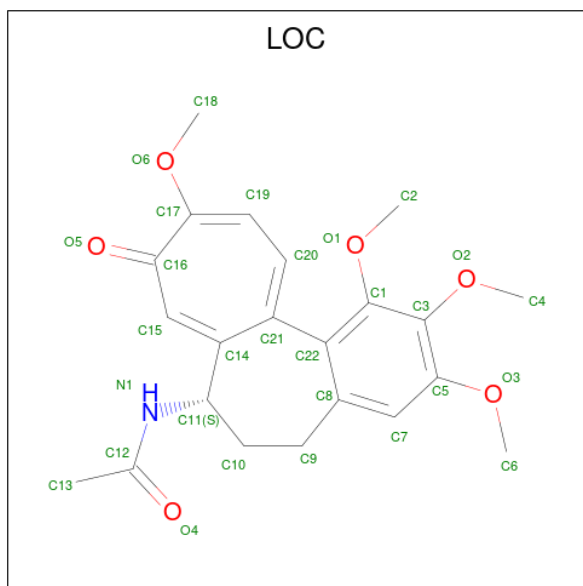
- Molecule 5 is GUANOSINE-5'-TRIPHOSPHATE (CCD ID: GTP) (formula: C<sub>10</sub>H<sub>16</sub>N<sub>5</sub>O<sub>14</sub>P<sub>3</sub>).





Mol	Chain	Residues	Atoms					ZeroOcc	AltConf
			Total	C	N	O	P		
7	B	1	28	10	5	11	2	0	0

- Molecule 8 is N-[(7S)-1,2,3,10-tetramethoxy-9-oxo-6,7-dihydro-5H-benzo[d]heptalen-7-yl]ethanamide (CCD ID: LOC) (formula: C<sub>22</sub>H<sub>25</sub>NO<sub>6</sub>).



Mol	Chain	Residues	Atoms				ZeroOcc	AltConf
			Total	C	N	O		
8	B	1	29	22	1	6	0	0

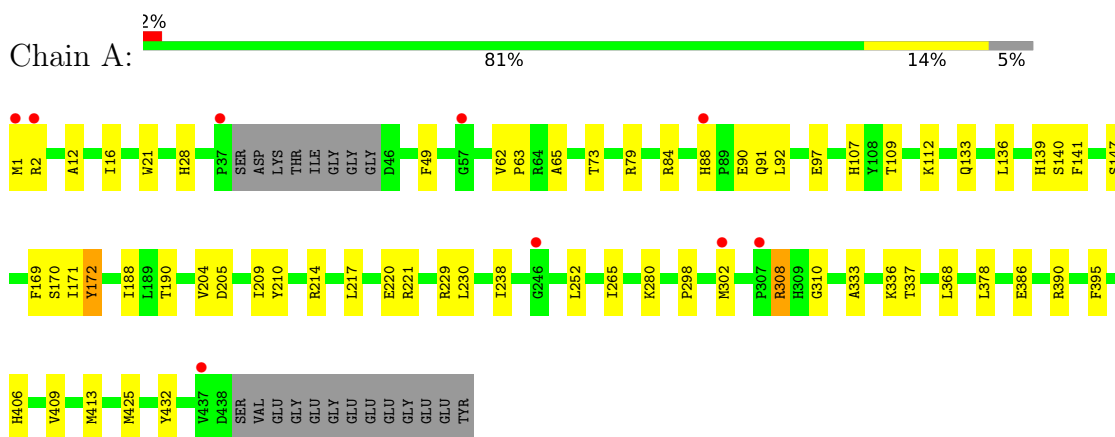
- Molecule 9 is water.

Mol	Chain	Residues	Atoms		ZeroOcc	AltConf
9	A	309	Total 309	O 309	0	0
9	B	96	Total 96	O 96	0	0
9	D	2	Total 2	O 2	0	0
9	F	66	Total 66	O 66	0	0

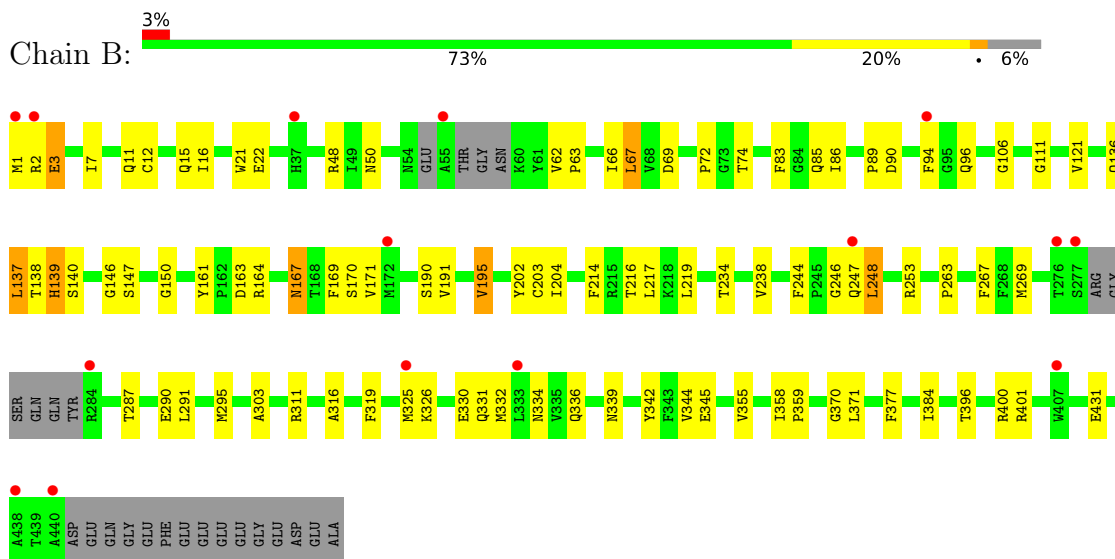
### 3 Residue-property plots [i](#)

These plots are drawn for all protein, RNA, DNA and oligosaccharide chains in the entry. The first graphic for a chain summarises the proportions of the various outlier classes displayed in the second graphic. The second graphic shows the sequence view annotated by issues in geometry and electron density. Residues are color-coded according to the number of geometric quality criteria for which they contain at least one outlier: green = 0, yellow = 1, orange = 2 and red = 3 or more. A red dot above a residue indicates a poor fit to the electron density ( $RSRZ > 2$ ). Stretches of 2 or more consecutive residues without any outlier are shown as a green connector. Residues present in the sample, but not in the model, are shown in grey.

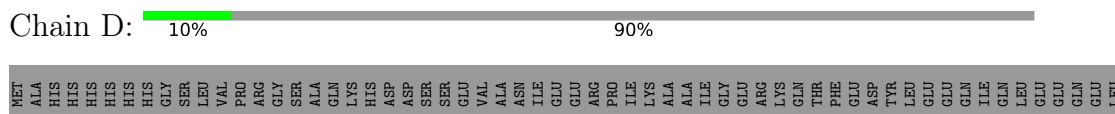
- Molecule 1: Tubulin alpha-1B chain

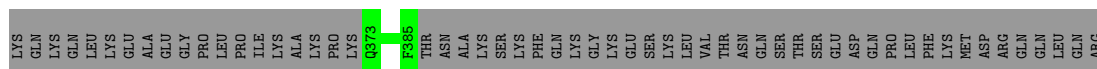


- Molecule 2: Tubulin beta-2B chain

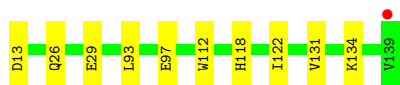
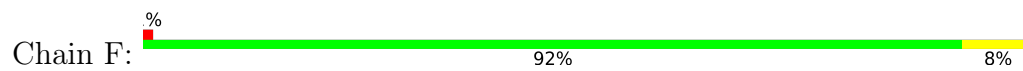


- Molecule 3: Centromere protein J





- Molecule 4: Designed ankyrin repeat protein (DARPIN) D1



## 4 Data and refinement statistics i

Property	Value	Source
Space group	P 1 21 1	Depositor
Cell constants a, b, c, $\alpha$ , $\beta$ , $\gamma$	61.08Å 85.34Å 98.69Å 90.00° 91.77° 90.00°	Depositor
Resolution (Å)	52.64 – 2.20 52.64 – 2.20	Depositor EDS
% Data completeness (in resolution range)	99.9 (52.64-2.20) 99.9 (52.64-2.20)	Depositor EDS
$R_{merge}$	0.08	Depositor
$R_{sym}$	(Not available)	Depositor
$\langle I/\sigma(I) \rangle$ <sup>1</sup>	3.07 (at 2.20Å)	Xtrriage
Refinement program	PHENIX (1.10.1_2155: ???)	Depositor
R, $R_{free}$	0.177 , 0.217 0.181 , 0.217	Depositor DCC
$R_{free}$ test set	2002 reflections (3.89%)	wwPDB-VP
Wilson B-factor (Å <sup>2</sup> )	34.5	Xtrriage
Anisotropy	0.132	Xtrriage
Bulk solvent $k_{sol}$ (e/Å <sup>3</sup> ), $B_{sol}$ (Å <sup>2</sup> )	0.34 , 46.3	EDS
L-test for twinning <sup>2</sup>	$\langle  L  \rangle = 0.49$ , $\langle L^2 \rangle = 0.32$	Xtrriage
Estimated twinning fraction	0.027 for h,-k,-l	Xtrriage
$F_o, F_c$ correlation	0.96	EDS
Total number of atoms	8279	wwPDB-VP
Average B, all atoms (Å <sup>2</sup> )	46.0	wwPDB-VP

Xtrriage's analysis on translational NCS is as follows: *The largest off-origin peak in the Patterson function is 5.32% of the height of the origin peak. No significant pseudotranslation is detected.*

<sup>1</sup>Intensities estimated from amplitudes.

<sup>2</sup>Theoretical values of  $\langle |L| \rangle$ ,  $\langle L^2 \rangle$  for acentric reflections are 0.5, 0.333 respectively for untwinned datasets, and 0.375, 0.2 for perfectly twinned datasets.

## 5 Model quality [i](#)

### 5.1 Standard geometry [i](#)

Bond lengths and bond angles in the following residue types are not validated in this section: GDP, MG, LOC, GTP

The Z score for a bond length (or angle) is the number of standard deviations the observed value is removed from the expected value. A bond length (or angle) with  $|Z| > 5$  is considered an outlier worth inspection. RMSZ is the root-mean-square of all Z scores of the bond lengths (or angles).

Mol	Chain	Bond lengths		Bond angles	
		RMSZ	# Z  >5	RMSZ	# Z  >5
1	A	0.47	1/3468 (0.0%)	0.64	5/4708 (0.1%)
2	B	0.45	0/3365	0.65	10/4556 (0.2%)
3	D	0.19	0/103	0.49	0/136
4	F	0.28	0/947	0.42	0/1291
All	All	0.44	1/7883 (0.0%)	0.62	15/10691 (0.1%)

All (1) bond length outliers are listed below:

Mol	Chain	Res	Type	Atoms	Z	Observed(Å)	Ideal(Å)
1	A	172	TYR	C-N	7.08	1.41	1.33

All (15) bond angle outliers are listed below:

Mol	Chain	Res	Type	Atoms	Z	Observed(°)	Ideal(°)
1	A	172	TYR	CA-C-N	-6.50	113.94	120.31
1	A	172	TYR	C-N-CA	-6.50	113.94	120.31
1	A	310	GLY	N-CA-C	6.42	122.42	112.60
2	B	3	GLU	N-CA-C	6.37	119.71	110.28
2	B	358	ILE	CA-C-N	-6.30	113.89	120.38
2	B	358	ILE	C-N-CA	-6.30	113.89	120.38
1	A	169	PHE	N-CA-C	-5.99	97.36	108.02
2	B	359	PRO	CA-C-N	-5.83	114.62	120.21
2	B	359	PRO	C-N-CA	-5.83	114.62	120.21
2	B	214	PHE	N-CA-C	5.33	116.90	111.14
1	A	308	ARG	N-CA-C	-5.08	105.74	111.28
2	B	169	PHE	N-CA-C	-5.08	99.14	108.02
2	B	216	THR	N-CA-C	5.04	116.85	111.36
2	B	62	VAL	CA-C-N	-5.00	114.42	119.83
2	B	62	VAL	C-N-CA	-5.00	114.42	119.83

There are no chirality outliers.

There are no planarity outliers.

## 5.2 Too-close contacts

In the following table, the Non-H and H(model) columns list the number of non-hydrogen atoms and hydrogen atoms in the chain respectively. The H(added) column lists the number of hydrogen atoms added and optimized by MolProbity. The Clashes column lists the number of clashes within the asymmetric unit, whereas Symm-Clashes lists symmetry-related clashes.

Mol	Chain	Non-H	H(model)	H(added)	Clashes	Symm-Clashes
1	A	3388	0	3296	50	0
2	B	3294	0	3174	85	0
3	D	101	0	99	0	0
4	F	933	0	945	6	0
5	A	32	0	12	0	0
6	A	1	0	0	0	0
7	B	28	0	12	1	0
8	B	29	0	25	1	0
9	A	309	0	0	8	0
9	B	96	0	0	3	0
9	D	2	0	0	0	0
9	F	66	0	0	2	0
All	All	8279	0	7563	134	0

The all-atom clashscore is defined as the number of clashes found per 1000 atoms (including hydrogen atoms). The all-atom clashscore for this structure is 9.

All (134) close contacts within the same asymmetric unit are listed below, sorted by their clash magnitude.

Atom-1	Atom-2	Interatomic distance (Å)	Clash overlap (Å)
2:B:140:SER:HA	2:B:171:VAL:HG22	1.33	1.07
2:B:69:ASP:OD2	2:B:74:THR:HG21	1.69	0.91
1:A:1:MET:HE2	1:A:2:ARG:HH12	1.36	0.89
2:B:83:PHE:HD2	2:B:86:ILE:HD11	1.35	0.88
2:B:83:PHE:CD2	2:B:86:ILE:HD11	2.10	0.87
2:B:161:TYR:HB3	2:B:164:ARG:HG2	1.65	0.78
1:A:172:TYR:HB3	1:A:205:ASP:HA	1.66	0.77
2:B:67:LEU:HD12	2:B:67:LEU:N	2.00	0.76
2:B:72:PRO:HG3	2:B:96:GLN:HA	1.67	0.75
1:A:97:GLU:OE2	2:B:1:MET:HE2	1.86	0.74
2:B:63:PRO:HD3	2:B:86:ILE:HG22	1.71	0.73

*Continued on next page...*

*Continued from previous page...*

Atom-1	Atom-2	Interatomic distance (Å)	Clash overlap (Å)
2:B:325:MET:SD	2:B:355:VAL:HG11	2.29	0.72
2:B:163:ASP:O	2:B:253:ARG:NH2	2.24	0.71
1:A:88:HIS:HB2	1:A:91[A]:GLN:HG3	1.73	0.70
2:B:1:MET:HE3	9:B:665:HOH:O	1.91	0.70
2:B:140:SER:CA	2:B:171:VAL:HG22	2.18	0.69
1:A:97:GLU:CD	2:B:1:MET:HE2	2.17	0.69
1:A:88:HIS:N	1:A:91[A]:GLN:OE1	2.26	0.68
2:B:140:SER:HA	2:B:171:VAL:CG2	2.16	0.67
2:B:3:GLU:OE2	2:B:50:ASN:ND2	2.23	0.66
2:B:246:GLY:HA2	2:B:247:GLN:HB2	1.76	0.66
2:B:83:PHE:HB3	2:B:86:ILE:CD1	2.26	0.66
2:B:431:GLU:OE1	9:B:602:HOH:O	2.13	0.66
2:B:12:CYS:HB3	2:B:140:SER:HB3	1.78	0.65
2:B:48:ARG:NH1	2:B:244:PHE:O	2.30	0.64
2:B:287:THR:HG23	2:B:290:GLU:H	1.64	0.63
2:B:85:GLN:H	2:B:85:GLN:CD	2.07	0.63
4:F:13:ASP:N	9:F:202:HOH:O	2.32	0.62
2:B:83:PHE:HD2	2:B:86:ILE:CD1	2.10	0.61
2:B:12:CYS:CB	2:B:140:SER:HB3	2.30	0.60
2:B:139:HIS:HE1	2:B:170:SER:OG	1.85	0.59
2:B:331:GLN:HA	2:B:334:ASN:HD21	1.66	0.59
2:B:171:VAL:HA	2:B:204:ILE:O	2.04	0.58
2:B:48:ARG:NH2	2:B:246:GLY:H	2.02	0.58
1:A:12:ALA:HB3	1:A:140:SER:HB3	1.86	0.57
1:A:386:GLU:OE2	9:A:601:HOH:O	2.18	0.57
2:B:330:GLU:O	2:B:334:ASN:ND2	2.37	0.57
2:B:319:PHE:HB2	2:B:355:VAL:HG12	1.86	0.57
2:B:12:CYS:SG	2:B:171:VAL:HG21	2.44	0.57
1:A:280:LYS:NZ	9:A:613:HOH:O	2.38	0.57
2:B:83:PHE:HB3	2:B:86:ILE:HD11	1.88	0.56
2:B:191:VAL:O	2:B:195:VAL:HG13	2.05	0.56
1:A:2:ARG:HB2	1:A:133:GLN:HE21	1.71	0.55
1:A:1:MET:HG2	1:A:2:ARG:NH1	2.20	0.55
2:B:85:GLN:N	2:B:85:GLN:OE1	2.40	0.55
2:B:106:GLY:O	2:B:111:GLY:HA3	2.07	0.54
2:B:147:SER:HG	2:B:190:SER:HG	1.54	0.54
2:B:67:LEU:HD12	2:B:67:LEU:H	1.70	0.54
2:B:147:SER:OG	2:B:190:SER:OG	2.26	0.53
2:B:396:THR:O	2:B:400:ARG:HG3	2.07	0.53
1:A:16:ILE:HD13	1:A:171:ILE:HD11	1.90	0.53
2:B:21:TRP:CZ3	2:B:63:PRO:HB3	2.42	0.53

*Continued on next page...*

*Continued from previous page...*

Atom-1	Atom-2	Interatomic distance (Å)	Clash overlap (Å)
1:A:62:VAL:HG11	1:A:88:HIS:NE2	2.24	0.53
2:B:48:ARG:HH22	2:B:246:GLY:H	1.55	0.53
2:B:167:ASN:HD21	2:B:202:TYR:HE2	1.57	0.53
2:B:332:MET:O	2:B:336:GLN:HG3	2.09	0.53
2:B:295:MET:HG2	2:B:377:PHE:HB2	1.91	0.53
1:A:229:ARG:NE	9:A:604:HOH:O	2.42	0.53
2:B:16:ILE:HD11	2:B:138:THR:HB	1.90	0.53
1:A:1:MET:CE	1:A:2:ARG:HH12	2.17	0.52
2:B:63:PRO:HD3	2:B:86:ILE:CG2	2.37	0.52
4:F:97:GLU:OE1	9:F:201:HOH:O	2.19	0.52
1:A:28:HIS:CE1	1:A:49:PHE:HB3	2.46	0.51
2:B:11:GLN:O	2:B:15:GLN:HG3	2.10	0.51
1:A:220:GLU:OE2	2:B:326:LYS:HD2	2.10	0.51
2:B:316:ALA:HB1	8:B:502:LOC:O1	2.11	0.51
2:B:83:PHE:HB3	2:B:86:ILE:HD12	1.92	0.51
1:A:308:ARG:HG3	9:A:849:HOH:O	2.10	0.51
2:B:269:MET:HG3	2:B:303:ALA:HB3	1.92	0.51
2:B:370:GLY:O	2:B:371:LEU:HG	2.10	0.51
1:A:333:ALA:O	1:A:337:THR:HG23	2.11	0.51
1:A:221:ARG:CZ	2:B:325:MET:HB3	2.41	0.50
2:B:69:ASP:O	2:B:94:PHE:HA	2.12	0.50
2:B:311:ARG:NH2	9:B:601:HOH:O	2.00	0.50
1:A:210:TYR:CZ	1:A:214:ARG:HD2	2.47	0.50
1:A:12:ALA:CB	1:A:140:SER:HB3	2.43	0.49
2:B:7:ILE:O	2:B:137:LEU:HA	2.13	0.49
1:A:21:TRP:CZ3	1:A:63:PRO:HB3	2.48	0.48
1:A:406:HIS:CG	2:B:263:PRO:HD3	2.48	0.48
2:B:63:PRO:CD	2:B:86:ILE:HG22	2.43	0.48
1:A:79:ARG:HD3	9:A:651:HOH:O	2.13	0.48
2:B:67:LEU:N	2:B:67:LEU:CD1	2.73	0.48
2:B:311:ARG:NH2	2:B:345:GLU:OE1	2.45	0.48
1:A:210:TYR:CE1	1:A:214:ARG:HD2	2.48	0.48
2:B:12:CYS:HB2	7:B:501:GDP:C8	2.48	0.48
2:B:217:LEU:O	2:B:219:LEU:HD23	2.13	0.48
2:B:136:GLN:HA	2:B:167:ASN:O	2.14	0.47
4:F:93:LEU:HD11	4:F:131:VAL:HG21	1.95	0.47
2:B:247:GLN:O	2:B:248:LEU:HB2	2.14	0.47
1:A:147:SER:HB2	1:A:190:THR:HB	1.96	0.47
1:A:188:ILE:HG13	1:A:425:MET:HG3	1.98	0.46
2:B:401:ARG:N	2:B:401:ARG:HD2	2.30	0.46
2:B:69:ASP:CG	2:B:74:THR:HG21	2.39	0.46

*Continued on next page...*

*Continued from previous page...*

Atom-1	Atom-2	Interatomic distance (Å)	Clash overlap (Å)
2:B:21:TRP:CH2	2:B:63:PRO:HB3	2.50	0.46
4:F:26:GLN:HB3	4:F:29:GLU:HB2	1.98	0.46
1:A:84:ARG:NH2	9:A:625:HOH:O	2.49	0.45
1:A:209:ILE:HG23	1:A:230:LEU:HD23	1.98	0.45
1:A:16:ILE:CD1	1:A:171:ILE:HD11	2.46	0.45
1:A:406:HIS:CD2	2:B:263:PRO:HD3	2.52	0.45
2:B:2:ARG:HG2	2:B:50:ASN:HD22	1.82	0.45
2:B:66:ILE:HG12	2:B:121:VAL:HG12	1.99	0.45
1:A:204:VAL:HG13	1:A:302:MET:HE3	2.00	0.44
1:A:65:ALA:O	1:A:91[A]:GLN:NE2	2.50	0.44
2:B:140:SER:CB	2:B:171:VAL:CG2	2.96	0.43
1:A:109:THR:HA	1:A:112:LYS:HE3	2.01	0.43
2:B:86:ILE:H	2:B:86:ILE:HG13	1.66	0.43
1:A:265:ILE:HG23	1:A:432:TYR:CE1	2.54	0.43
1:A:107:HIS:HE1	9:A:865:HOH:O	2.01	0.43
2:B:89:PRO:HG2	2:B:90:ASP:OD1	2.19	0.42
2:B:164:ARG:N	2:B:164:ARG:HD2	2.35	0.42
4:F:118:HIS:CE1	4:F:122:ILE:HD11	2.55	0.42
1:A:209:ILE:HD11	1:A:302:MET:CE	2.49	0.42
2:B:291:LEU:HA	2:B:291:LEU:HD23	1.78	0.42
1:A:336:LYS:NZ	9:A:631:HOH:O	2.52	0.42
1:A:136:LEU:HD21	1:A:252:LEU:HD21	2.02	0.42
2:B:234:THR:O	2:B:238:VAL:HG13	2.19	0.42
2:B:339:ASN:HB3	2:B:342:TYR:HD2	1.85	0.42
2:B:400:ARG:HD2	4:F:112:TRP:NE1	2.35	0.42
1:A:79:ARG:HG2	1:A:92:LEU:CD1	2.50	0.41
1:A:209:ILE:HD11	1:A:302:MET:SD	2.59	0.41
1:A:88:HIS:HB3	1:A:90:GLU:CD	2.44	0.41
2:B:22:GLU:HG2	2:B:83:PHE:CD1	2.55	0.41
1:A:139:HIS:O	1:A:170:SER:HA	2.20	0.41
1:A:298:PRO:HD3	1:A:308:ARG:NH1	2.36	0.41
1:A:386:GLU:O	1:A:390:ARG:HG3	2.21	0.41
2:B:295:MET:CG	2:B:377:PHE:HB2	2.50	0.41
2:B:331:GLN:HA	2:B:334:ASN:ND2	2.33	0.41
1:A:217:LEU:HD21	1:A:368:LEU:HD23	2.03	0.40
1:A:395:PHE:CD1	1:A:395:PHE:C	2.98	0.40
1:A:409:VAL:HA	1:A:413:MET:O	2.21	0.40
2:B:146:GLY:O	2:B:150:GLY:HA3	2.20	0.40
2:B:203:CYS:SG	2:B:267:PHE:HB3	2.61	0.40
1:A:238:ILE:HG12	1:A:378:LEU:HD21	2.03	0.40
2:B:139:HIS:CE1	2:B:170:SER:OG	2.70	0.40

There are no symmetry-related clashes.

## 5.3 Torsion angles [i](#)

### 5.3.1 Protein backbone [i](#)

In the following table, the Percentiles column shows the percent Ramachandran outliers of the chain as a percentile score with respect to all X-ray entries followed by that with respect to entries of similar resolution.

The Analysed column shows the number of residues for which the backbone conformation was analysed, and the total number of residues.

Mol	Chain	Analysed	Favoured	Allowed	Outliers	Percentiles	
1	A	428/451 (95%)	420 (98%)	8 (2%)	0	100	100
2	B	413/445 (93%)	403 (98%)	9 (2%)	1 (0%)	43	51
3	D	11/129 (8%)	11 (100%)	0	0	100	100
4	F	125/127 (98%)	124 (99%)	1 (1%)	0	100	100
All	All	977/1152 (85%)	958 (98%)	18 (2%)	1 (0%)	48	57

All (1) Ramachandran outliers are listed below:

Mol	Chain	Res	Type
2	B	248	LEU

### 5.3.2 Protein sidechains [i](#)

In the following table, the Percentiles column shows the percent sidechain outliers of the chain as a percentile score with respect to all X-ray entries followed by that with respect to entries of similar resolution.

The Analysed column shows the number of residues for which the sidechain conformation was analysed, and the total number of residues.

Mol	Chain	Analysed	Rotameric	Outliers	Percentiles	
1	A	366/379 (97%)	364 (100%)	2 (0%)	81	90
2	B	361/383 (94%)	354 (98%)	7 (2%)	50	66
3	D	9/113 (8%)	9 (100%)	0	100	100
4	F	96/97 (99%)	95 (99%)	1 (1%)	68	81
All	All	832/972 (86%)	822 (99%)	10 (1%)	63	78

All (10) residues with a non-rotameric sidechain are listed below:

Mol	Chain	Res	Type
1	A	73	THR
1	A	141	PHE
2	B	67	LEU
2	B	137	LEU
2	B	139	HIS
2	B	167	ASN
2	B	195	VAL
2	B	344	VAL
2	B	384	ILE
4	F	134	LYS

Sometimes sidechains can be flipped to improve hydrogen bonding and reduce clashes. All (13) such sidechains are listed below:

Mol	Chain	Res	Type
1	A	15	GLN
1	A	216	ASN
1	A	233	GLN
1	A	309	HIS
2	B	96	GLN
2	B	139	HIS
2	B	167	ASN
2	B	331	GLN
2	B	334	ASN
2	B	385	GLN
2	B	433	GLN
2	B	436	GLN
4	F	26	GLN

### 5.3.3 RNA [i](#)

There are no RNA molecules in this entry.

### 5.4 Non-standard residues in protein, DNA, RNA chains [i](#)

There are no non-standard protein/DNA/RNA residues in this entry.

### 5.5 Carbohydrates [i](#)

There are no oligosaccharides in this entry.

## 5.6 Ligand geometry

Of 4 ligands modelled in this entry, 1 is monoatomic - leaving 3 for Mogul analysis.

In the following table, the Counts columns list the number of bonds (or angles) for which Mogul statistics could be retrieved, the number of bonds (or angles) that are observed in the model and the number of bonds (or angles) that are defined in the Chemical Component Dictionary. The Link column lists molecule types, if any, to which the group is linked. The Z score for a bond length (or angle) is the number of standard deviations the observed value is removed from the expected value. A bond length (or angle) with  $|Z| > 2$  is considered an outlier worth inspection. RMSZ is the root-mean-square of all Z scores of the bond lengths (or angles).

Mol	Type	Chain	Res	Link	Bond lengths			Bond angles		
					Counts	RMSZ	# Z  > 2	Counts	RMSZ	# Z  > 2
8	LOC	B	502	-	31,31,31	1.87	6 (19%)	44,44,44	1.88	8 (18%)
7	GDP	B	501	-	29,30,30	1.13	3 (10%)	45,47,47	1.72	7 (15%)
5	GTP	A	501	6	33,34,34	0.78	0	50,54,54	1.58	13 (26%)

In the following table, the Chirals column lists the number of chiral outliers, the number of chiral centers analysed, the number of these observed in the model and the number defined in the Chemical Component Dictionary. Similar counts are reported in the Torsion and Rings columns. '-' means no outliers of that kind were identified.

Mol	Type	Chain	Res	Link	Chirals	Torsions	Rings
8	LOC	B	502	-	-	0/12/25/25	0/3/3/3
7	GDP	B	501	-	-	5/16/32/32	0/3/3/3
5	GTP	A	501	6	-	7/22/38/38	0/3/3/3

All (9) bond length outliers are listed below:

Mol	Chain	Res	Type	Atoms	Z	Observed(Å)	Ideal(Å)
8	B	502	LOC	O6-C17	4.86	1.45	1.36
8	B	502	LOC	C1-C3	4.36	1.48	1.39
8	B	502	LOC	C22-C8	3.79	1.48	1.41
8	B	502	LOC	C5-C3	3.75	1.48	1.41
8	B	502	LOC	C22-C1	3.59	1.48	1.40
7	B	501	GDP	C5-C4	3.13	1.47	1.38
7	B	501	GDP	C6-N1	-2.25	1.34	1.38
8	B	502	LOC	C11-C14	-2.14	1.50	1.53
7	B	501	GDP	C4-N9	-2.13	1.32	1.38

All (28) bond angle outliers are listed below:

Mol	Chain	Res	Type	Atoms	Z	Observed(°)	Ideal(°)
8	B	502	LOC	O6-C17-C16	8.01	116.96	109.60
7	B	501	GDP	C5-C4-N3	-5.56	119.53	128.39
7	B	501	GDP	C2-N3-C4	4.84	120.64	112.30
5	A	501	GTP	C2-N3-C4	4.76	120.50	112.30
5	A	501	GTP	C5-C4-N3	-4.29	121.56	128.39
7	B	501	GDP	N9-C4-N3	4.10	134.15	125.95
8	B	502	LOC	O6-C17-C19	-3.86	116.69	122.29
8	B	502	LOC	C15-C16-C17	3.62	126.62	121.86
7	B	501	GDP	C6-C5-N7	3.47	136.60	130.29
8	B	502	LOC	C14-C11-N1	-3.15	111.82	114.31
5	A	501	GTP	N9-C8-N7	-3.13	107.61	113.40
8	B	502	LOC	C20-C21-C14	2.78	127.49	124.67
5	A	501	GTP	C8-N7-C5	2.64	108.96	104.26
7	B	501	GDP	O3B-PB-O3A	2.50	113.03	104.64
7	B	501	GDP	C4-C5-N7	-2.41	106.86	110.67
7	B	501	GDP	O6-C6-C5	-2.36	120.31	126.53
5	A	501	GTP	C5'-C4'-C3'	-2.29	106.97	115.21
5	A	501	GTP	N2-C2-N1	2.27	121.55	116.76
8	B	502	LOC	O5-C16-C17	-2.18	116.43	119.06
5	A	501	GTP	N1-C2-N3	-2.17	119.34	123.32
8	B	502	LOC	C6-O3-C5	2.17	120.70	117.51
5	A	501	GTP	C5-C6-N1	2.16	118.75	113.25
5	A	501	GTP	O2A-PA-O3A	2.12	113.00	107.27
5	A	501	GTP	N9-C4-N3	2.12	130.18	125.95
8	B	502	LOC	O3-C5-C3	2.11	118.75	115.14
5	A	501	GTP	C2-N1-C6	-2.10	121.30	125.11
5	A	501	GTP	C6-C5-N7	2.10	134.11	130.29
5	A	501	GTP	C4-C5-N7	-2.09	107.35	110.67

There are no chirality outliers.

All (12) torsion outliers are listed below:

Mol	Chain	Res	Type	Atoms
5	A	501	GTP	PB-O3B-PG-O2G
5	A	501	GTP	C5'-O5'-PA-O3A
5	A	501	GTP	C5'-O5'-PA-O2A
7	B	501	GDP	C5'-O5'-PA-O3A
7	B	501	GDP	C5'-O5'-PA-O1A
7	B	501	GDP	C5'-O5'-PA-O2A
7	B	501	GDP	PB-O3A-PA-O2A
5	A	501	GTP	C4'-C5'-O5'-PA
5	A	501	GTP	PB-O3B-PG-O1G
5	A	501	GTP	PB-O3B-PG-O3G

*Continued on next page...*

*Continued from previous page...*

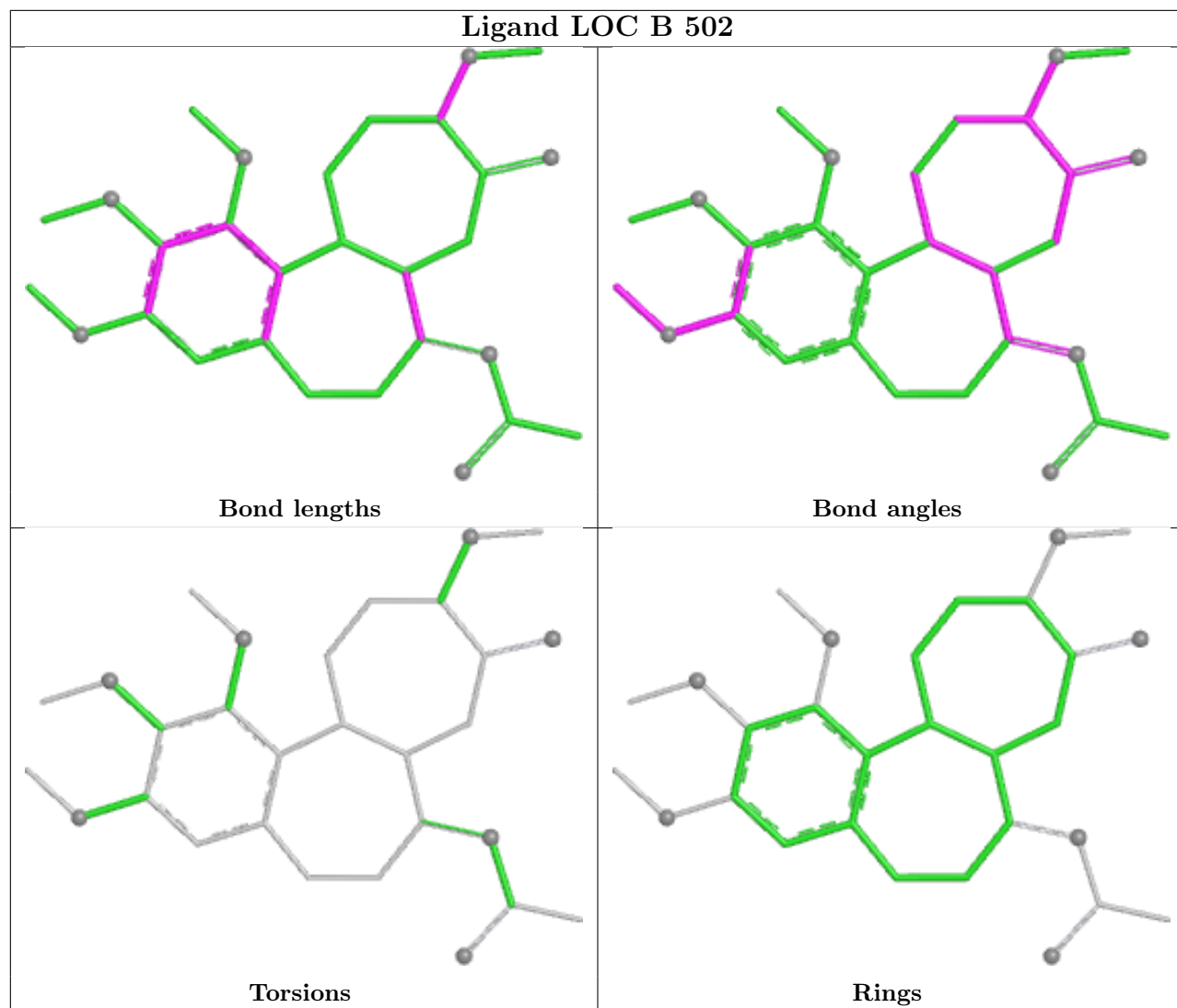
Mol	Chain	Res	Type	Atoms
7	B	501	GDP	PB-O3A-PA-O1A
5	A	501	GTP	PB-O3A-PA-O2A

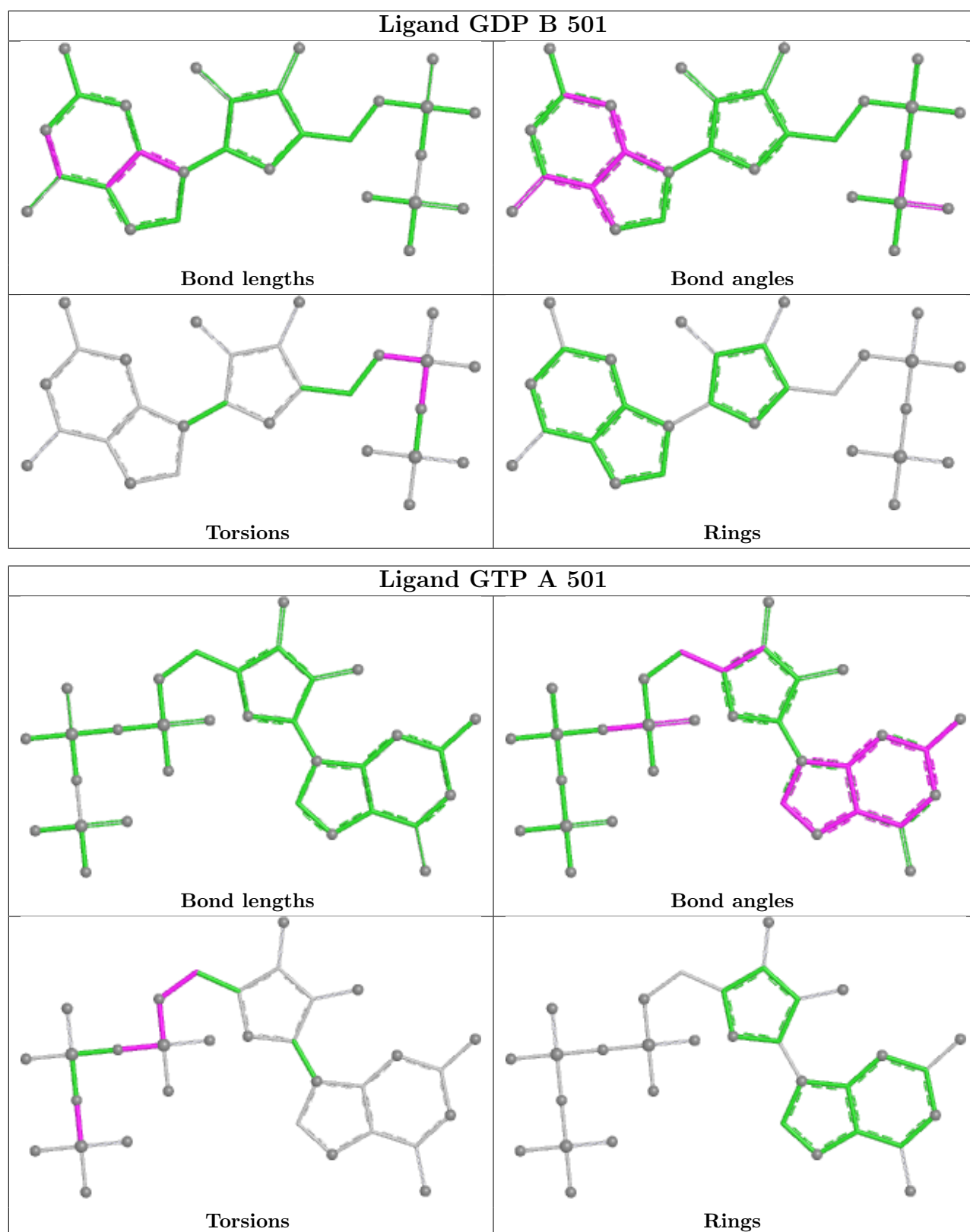
There are no ring outliers.

2 monomers are involved in 2 short contacts:

Mol	Chain	Res	Type	Clashes	Symm-Clashes
8	B	502	LOC	1	0
7	B	501	GDP	1	0

The following is a two-dimensional graphical depiction of Mogul quality analysis of bond lengths, bond angles, torsion angles, and ring geometry for all instances of the Ligand of Interest. In addition, ligands with molecular weight > 250 and outliers as shown on the validation Tables will also be included. For torsion angles, if less than 5% of the Mogul distribution of torsion angles is within 10 degrees of the torsion angle in question, then that torsion angle is considered an outlier. Any bond that is central to one or more torsion angles identified as an outlier by Mogul will be highlighted in the graph. For rings, the root-mean-square deviation (RMSD) between the ring in question and similar rings identified by Mogul is calculated over all ring torsion angles. If the average RMSD is greater than 60 degrees and the minimal RMSD between the ring in question and any Mogul-identified rings is also greater than 60 degrees, then that ring is considered an outlier. The outliers are highlighted in purple. The color gray indicates Mogul did not find sufficient equivalents in the CSD to analyse the geometry.





## 5.7 Other polymers [i](#)

There are no such residues in this entry.

## 5.8 Polymer linkage issues

There are no chain breaks in this entry.

## 6 Fit of model and data

### 6.1 Protein, DNA and RNA chains

In the following table, the column labelled ‘#RSRZ > 2’ contains the number (and percentage) of RSRZ outliers, followed by percent RSRZ outliers for the chain as percentile scores relative to all X-ray entries and entries of similar resolution. The OWAB column contains the minimum, median, 95<sup>th</sup> percentile and maximum values of the occupancy-weighted average B-factor per residue. The column labelled ‘Q < 0.9’ lists the number of (and percentage) of residues with an average occupancy less than 0.9.

Mol	Chain	Analysed	<RSRZ>	#RSRZ>2	OWAB(Å <sup>2</sup> )	Q<0.9
1	A	430/451 (95%)	-0.25	9 (2%) 63 60	19, 35, 60, 113	3 (0%)
2	B	420/445 (94%)	0.20	15 (3%) 46 43	28, 51, 89, 117	0
3	D	13/129 (10%)	0.82	0 100 100	57, 70, 84, 85	0
4	F	127/127 (100%)	-0.20	1 (0%) 82 80	28, 40, 61, 96	0
All	All	990/1152 (85%)	-0.04	25 (2%) 58 55	19, 42, 82, 117	3 (0%)

All (25) RSRZ outliers are listed below:

Mol	Chain	Res	Type	RSRZ
2	B	55	ALA	4.0
1	A	1	MET	3.9
2	B	247	GLN	3.1
2	B	276	THR	3.0
1	A	307	PRO	2.8
2	B	94	PHE	2.8
1	A	37	PRO	2.7
1	A	302	MET	2.7
2	B	440	ALA	2.6
2	B	1	MET	2.6
2	B	277	SER	2.4
2	B	333	LEU	2.4
2	B	325	MET	2.3
1	A	88	HIS	2.3
1	A	246	GLY	2.3
2	B	438	ALA	2.2
2	B	284	ARG	2.2
2	B	407	TRP	2.2
1	A	437	VAL	2.2
2	B	37	HIS	2.2
2	B	172	MET	2.1

*Continued on next page...*

*Continued from previous page...*

Mol	Chain	Res	Type	RSRZ
1	A	2	ARG	2.1
1	A	57	GLY	2.1
4	F	139	VAL	2.1
2	B	2	ARG	2.0

## 6.2 Non-standard residues in protein, DNA, RNA chains [i](#)

There are no non-standard protein/DNA/RNA residues in this entry.

## 6.3 Carbohydrates [i](#)

There are no oligosaccharides in this entry.

## 6.4 Ligands [i](#)

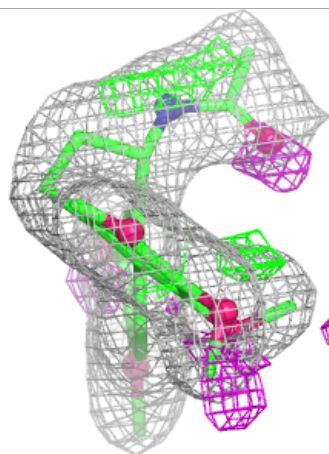
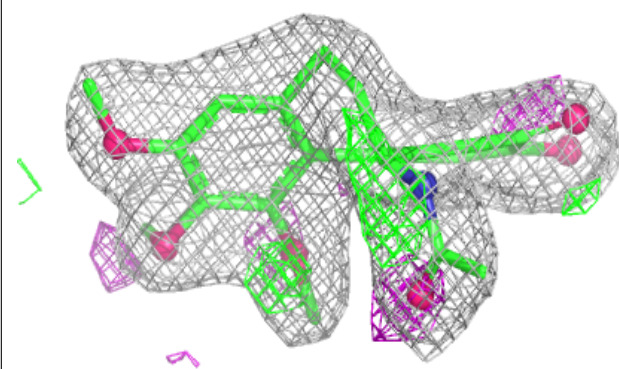
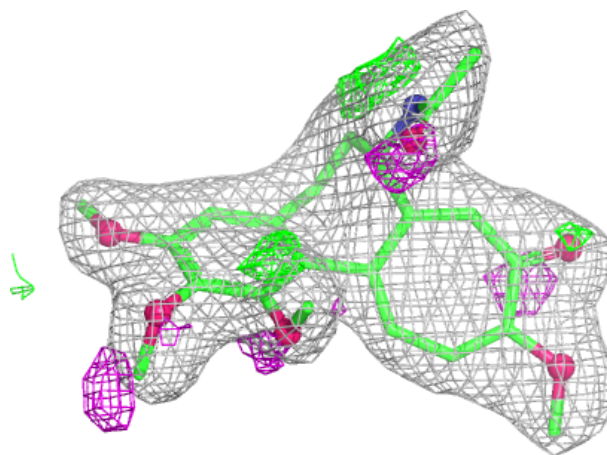
In the following table, the Atoms column lists the number of modelled atoms in the group and the number defined in the chemical component dictionary. The B-factors column lists the minimum, median, 95<sup>th</sup> percentile and maximum values of B factors of atoms in the group. The column labelled 'Q < 0.9' lists the number of atoms with occupancy less than 0.9.

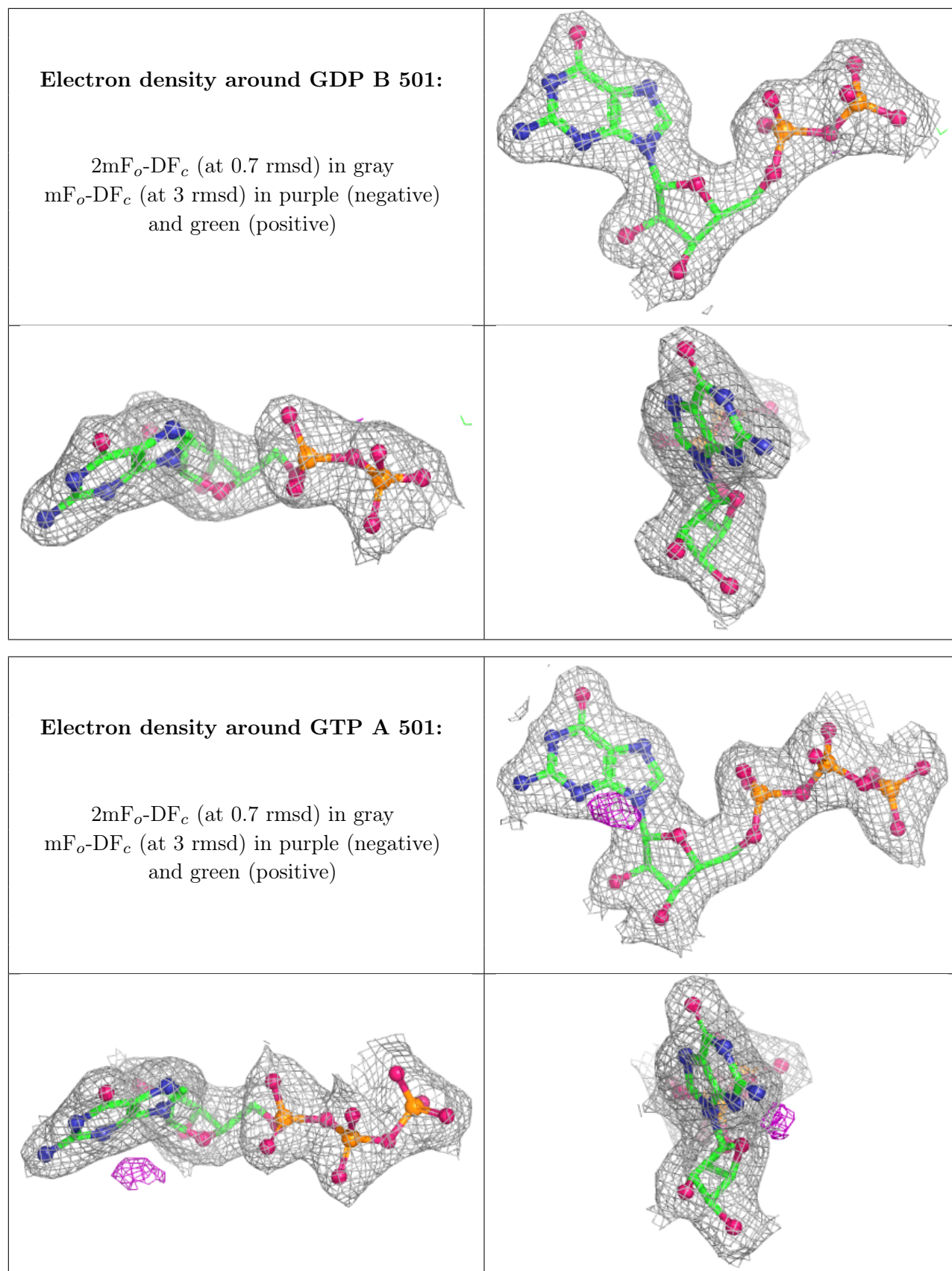
Mol	Type	Chain	Res	Atoms	RSCC	RSR	B-factors(Å <sup>2</sup> )	Q < 0.9
8	LOC	B	502	29/29	0.88	0.10	30,35,41,42	0
7	GDP	B	501	28/28	0.97	0.06	35,41,46,49	0
5	GTP	A	501	32/32	0.98	0.05	25,29,31,32	0
6	MG	A	502	1/1	0.99	0.03	31,31,31,31	0

The following is a graphical depiction of the model fit to experimental electron density of all instances of the Ligand of Interest. In addition, ligands with molecular weight > 250 and outliers as shown on the geometry validation Tables will also be included. Each fit is shown from different orientation to approximate a three-dimensional view.

**Electron density around LOC B 502:**

$2mF_o-DF_c$  (at 0.7 rmsd) in gray  
 $mF_o-DF_c$  (at 3 rmsd) in purple (negative)  
and green (positive)





## 6.5 Other polymers [i](#)

There are no such residues in this entry.