



# wwPDB EM Validation Summary Report ⓘ

Mar 4, 2026 – 06:50 PM UTC

PDB ID : 7JPL / pdb\_00007jpl  
EMDB ID : EMD-22415  
Title : Rabbit Cav1.1 in the presence of 10 micromolar (S)-(-)-Bay K8644 in nanodiscs at 3.4 Angstrom resolution  
Authors : Yan, N.; Gao, S.  
Deposited on : 2020-08-09  
Resolution : 3.40 Å(reported)

This is a wwPDB EM Validation Summary Report for a publicly released PDB entry.

We welcome your comments at [validation@mail.wwpdb.org](mailto:validation@mail.wwpdb.org)

A user guide is available at

<https://www.wwpdb.org/validation/2017/EMValidationReportHelp>

with specific help available everywhere you see the ⓘ symbol.

The types of validation reports are described at

<http://www.wwpdb.org/validation/2017/FAQs#types>.

---

The following versions of software and data (see [references ⓘ](#)) were used in the production of this report:

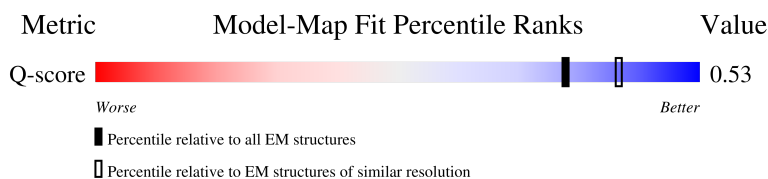
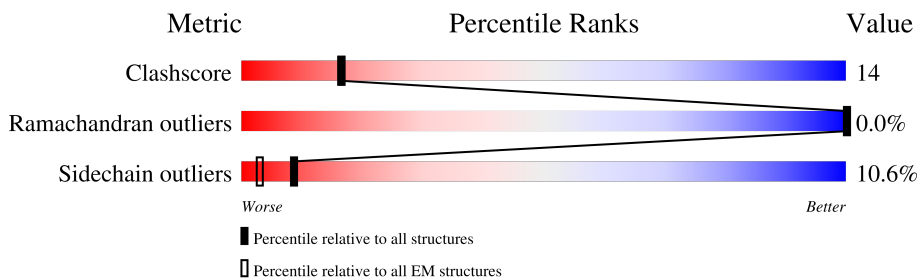
EMDB validation analysis : 0.0.1.dev132  
Mogul : 2022.3.0, CSD as543be (2022)  
MolProbity : 4-5-2 with Phenix2.0  
Buster-report : wwPDB partial adaption of 1.1.7 (2018)  
Percentile statistics : 20250101.v01 (using entries in the PDB archive January 1st 2025)  
EM percentile statistics : 202505.v01 (Using data in the EMDB archive up until May 2025)  
MapQ : 1.9.13  
Ideal geometry (proteins) : Engh & Huber (2001)  
Ideal geometry (DNA, RNA) : Parkinson et al. (1996)  
Validation Pipeline (wwPDB-VP) : 2.49

# 1 Overall quality at a glance

The following experimental techniques were used to determine the structure:  
*ELECTRON MICROSCOPY*

The reported resolution of this entry is 3.40 Å.

Percentile scores (ranging between 0-100) for global validation metrics of the entry are shown in the following graphic. The table shows the number of entries on which the scores are based.



Metric	Whole archive (#Entries)	EM structures (#Entries)	Similar EM resolution (#Entries, resolution range(Å))
Clashscore	229148	23984	-
Ramachandran outliers	224038	23583	-
Sidechain outliers	223484	23102	-
Q-score	-	25397	14717 ( 2.90 - 3.90 )

The table below summarises the geometric issues observed across the polymeric chains and their fit to the map. The red, orange, yellow and green segments of the bar indicate the fraction of residues that contain outliers for  $\geq 3$ , 2, 1 and 0 types of geometric quality criteria respectively. A grey segment represents the fraction of residues that are not modelled. The numeric value for each fraction is indicated below the corresponding segment, with a dot representing fractions  $\leq 5\%$ . The upper red bar (where present) indicates the fraction of residues that have poor fit to the EM map (all-atom inclusion  $< 40\%$ ). The numeric value is given above the bar.

Mol	Chain	Length	Quality of chain
1	A	1873	<p>8% (red), 38% (green), 19% (yellow), 35% (grey)</p>
2	E	222	<p>16% (red), 46% (green), 28% (yellow), 10% (grey)</p>
3	F	1105	<p>1% (red), 61% (green), 25% (yellow), 13% (grey)</p>

## 2 Entry composition [i](#)

There are 7 unique types of molecules in this entry. The entry contains 18565 atoms, of which 0 are hydrogens and 0 are deuteriums.

In the tables below, the AltConf column contains the number of residues with at least one atom in alternate conformation and the Trace column contains the number of residues modelled with at most 2 atoms.

- Molecule 1 is a protein called Voltage-dependent L-type calcium channel subunit alpha-1S.

Mol	Chain	Residues	Atoms					AltConf	Trace
			Total	C	N	O	S		
1	A	1114	8998	5970	1433	1536	59	0	0

- Molecule 2 is a protein called Voltage-dependent calcium channel gamma-1 subunit.

Mol	Chain	Residues	Atoms					AltConf	Trace
			Total	C	N	O	S		
2	E	169	1326	872	216	220	18	0	0

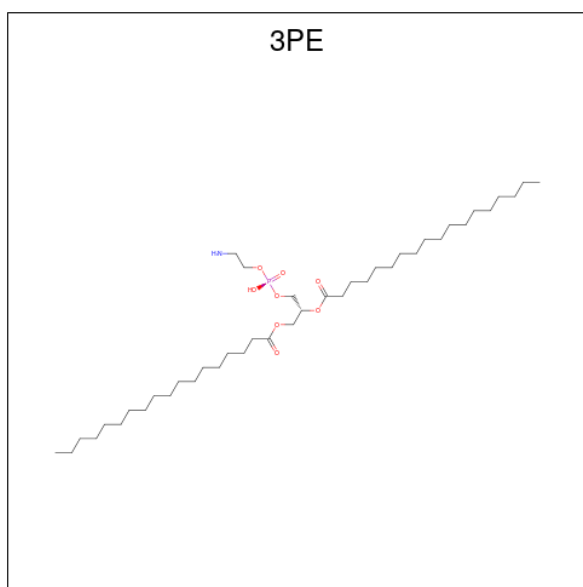
- Molecule 3 is a protein called Voltage-dependent calcium channel subunit alpha-2/delta-1.

Mol	Chain	Residues	Atoms					AltConf	Trace
			Total	C	N	O	S		
3	F	973	7804	4942	1320	1510	32	1	0

- Molecule 4 is CALCIUM ION (CCD ID: CA) (formula: Ca).

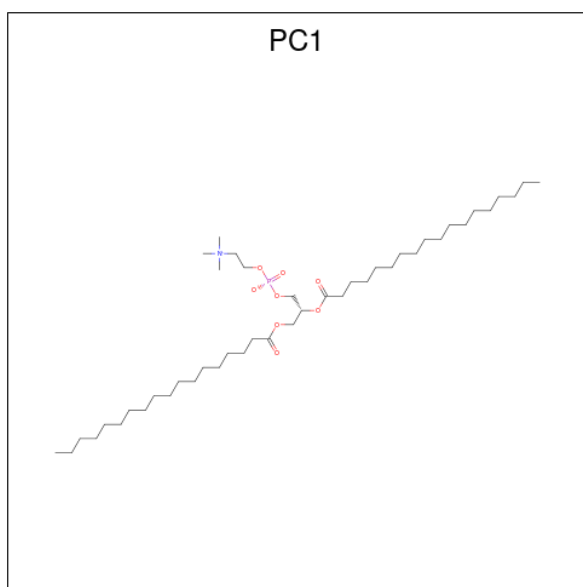
Mol	Chain	Residues	Atoms		AltConf
4	A	1	Total	Ca	0
			1	1	

- Molecule 5 is 1,2-Distearoyl-sn-glycerophosphoethanolamine (CCD ID: 3PE) (formula: C<sub>41</sub>H<sub>82</sub>NO<sub>8</sub>P).



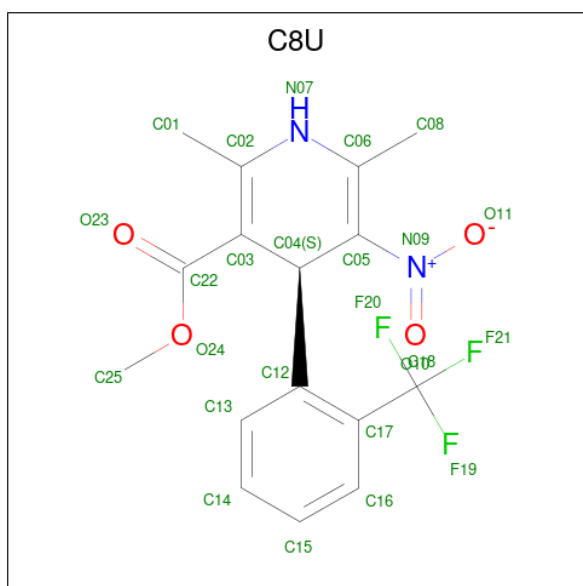
Mol	Chain	Residues	Atoms					AltConf
			Total	C	N	O	P	
5	A	1	33	23	1	8	1	0
5	A	1	36	26	1	8	1	0
5	A	1	51	41	1	8	1	0
5	A	1	51	41	1	8	1	0
5	A	1	44	34	1	8	1	0
5	A	1	38	28	1	8	1	0
5	A	1	21	13	1	6	1	0
5	A	1	32	22	1	8	1	0
5	A	1	51	41	1	8	1	0

- Molecule 6 is 1,2-DIACYL-SN-GLYCERO-3-PHOSPHOCHOLINE (CCD ID: PC1) (formula: C<sub>44</sub>H<sub>88</sub>NO<sub>8</sub>P).



Mol	Chain	Residues	Atoms					AltConf
			Total	C	N	O	P	
6	A	1	54	44	1	8	1	0

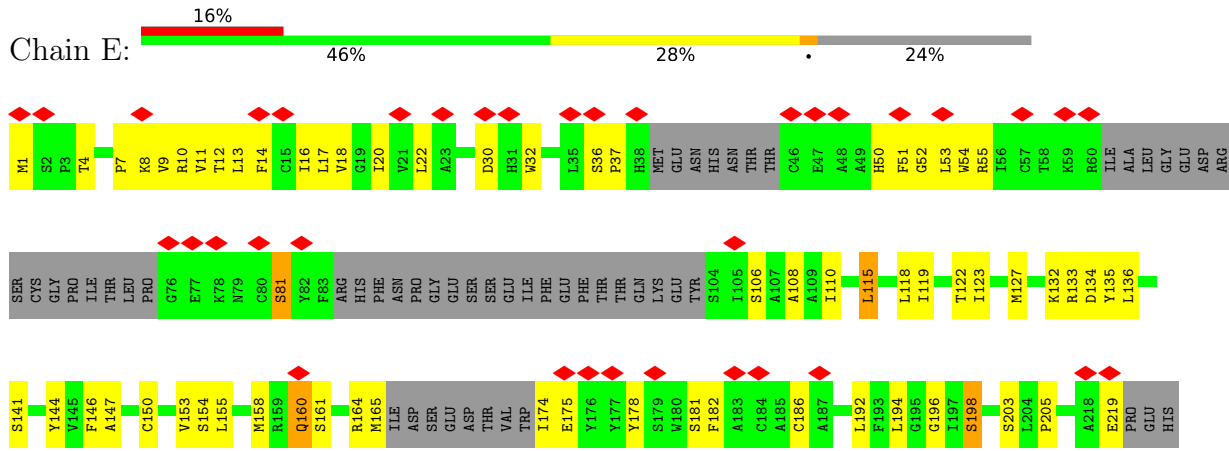
- Molecule 7 is methyl (4 {S})-2,6-dimethyl-5-nitro-4-[2-(trifluoromethyl)phenyl]-1,4-dihydropyridine-3-carboxylate (CCD ID: C8U) (formula: C<sub>16</sub>H<sub>15</sub>F<sub>3</sub>N<sub>2</sub>O<sub>4</sub>) (labeled as "Ligand of Interest" by depositor).



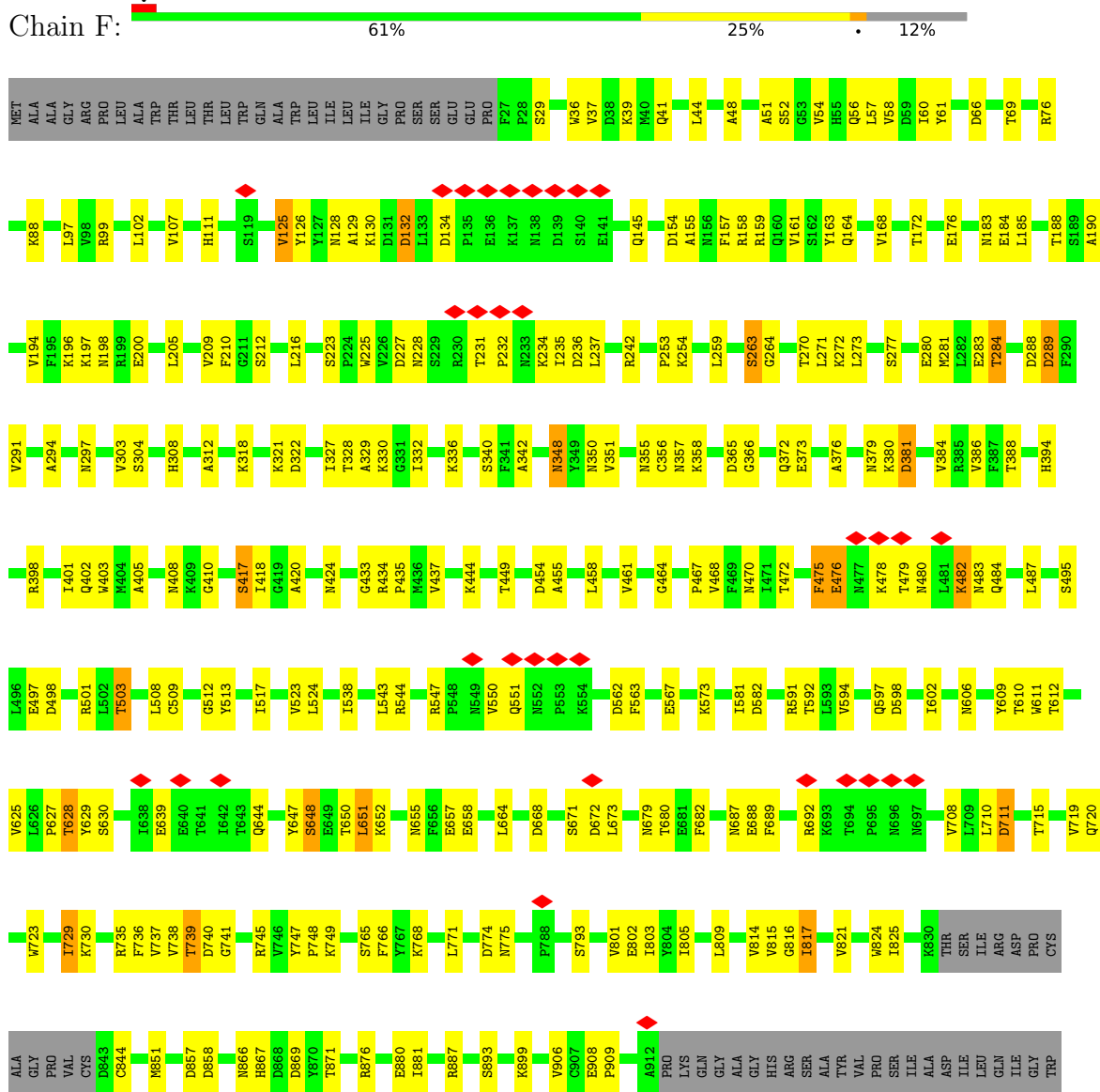
Mol	Chain	Residues	Atoms				AltConf	
			Total	C	F	N		O
7	A	1	25	16	3	2	4	0

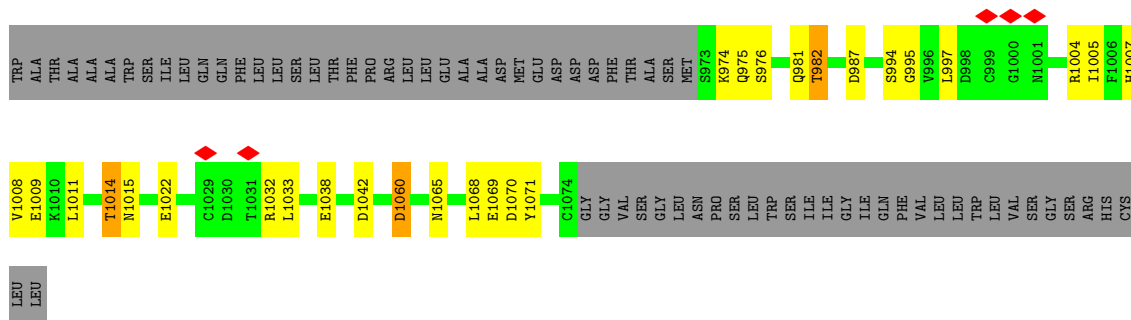






• Molecule 3: Voltage-dependent calcium channel subunit alpha-2/delta-1





## 4 Experimental information

Property	Value	Source
EM reconstruction method	SINGLE PARTICLE	Depositor
Imposed symmetry	POINT, Not provided	
Number of particles used	53789	Depositor
Resolution determination method	FSC 0.143 CUT-OFF	Depositor
CTF correction method	PHASE FLIPPING AND AMPLITUDE CORRECTION	Depositor
Microscope	FEI TITAN KRIOS	Depositor
Voltage (kV)	300	Depositor
Electron dose ( $e^-/\text{\AA}^2$ )	50	Depositor
Minimum defocus (nm)	Not provided	
Maximum defocus (nm)	Not provided	
Magnification	Not provided	
Image detector	GATAN K2 SUMMIT (4k x 4k)	Depositor
Maximum map value	0.159	Depositor
Minimum map value	-0.097	Depositor
Average map value	0.000	Depositor
Map value standard deviation	0.004	Depositor
Recommended contour level	0.02	Depositor
Map size ( $\text{\AA}$ )	311.91998, 311.91998, 311.91998	wwPDB
Map dimensions	280, 280, 280	wwPDB
Map angles ( $^\circ$ )	90.0, 90.0, 90.0	wwPDB
Pixel spacing ( $\text{\AA}$ )	1.114, 1.114, 1.114	Depositor

## 5 Model quality [i](#)

### 5.1 Standard geometry [i](#)

Bond lengths and bond angles in the following residue types are not validated in this section: PC1, C8U, 3PE, CA

The Z score for a bond length (or angle) is the number of standard deviations the observed value is removed from the expected value. A bond length (or angle) with  $|Z| > 5$  is considered an outlier worth inspection. RMSZ is the root-mean-square of all Z scores of the bond lengths (or angles).

Mol	Chain	Bond lengths		Bond angles	
		RMSZ	# Z  >5	RMSZ	# Z  >5
1	A	0.31	0/9222	0.49	2/12520 (0.0%)
2	E	0.20	0/1358	0.43	0/1832
3	F	0.38	0/7974	0.44	0/10816
All	All	0.34	0/18554	0.47	2/25168 (0.0%)

There are no bond length outliers.

All (2) bond angle outliers are listed below:

Mol	Chain	Res	Type	Atoms	Z	Observed(°)	Ideal(°)
1	A	142	VAL	N-CA-C	-6.08	107.94	113.71
1	A	1046	ILE	N-CA-C	-5.62	108.03	113.53

There are no chirality outliers.

There are no planarity outliers.

### 5.2 Too-close contacts [i](#)

In the following table, the Non-H and H(model) columns list the number of non-hydrogen atoms and hydrogen atoms in the chain respectively. The H(added) column lists the number of hydrogen atoms added and optimized by MolProbity. The Clashes column lists the number of clashes within the asymmetric unit, whereas Symm-Clashes lists symmetry-related clashes.

Mol	Chain	Non-H	H(model)	H(added)	Clashes	Symm-Clashes
1	A	8998	0	9133	279	0
2	E	1326	0	1345	36	0
3	F	7804	0	7617	166	0
4	A	1	0	0	0	0
5	A	357	0	508	113	0
6	A	54	0	88	12	0

*Continued on next page...*

Continued from previous page...

Mol	Chain	Non-H	H(model)	H(added)	Clashes	Symm-Clashes
7	A	25	0	0	6	0
All	All	18565	0	18691	524	0

The all-atom clashscore is defined as the number of clashes found per 1000 atoms (including hydrogen atoms). The all-atom clashscore for this structure is 14.

The worst 5 of 524 close contacts within the same asymmetric unit are listed below, sorted by their clash magnitude.

Atom-1	Atom-2	Interatomic distance (Å)	Clash overlap (Å)
1:A:536:PHE:CE1	1:A:941:MET:HE1	1.35	1.59
1:A:646:VAL:CG1	5:A:1905:3PE:H3F1	1.37	1.50
1:A:536:PHE:HE1	1:A:941:MET:CE	1.20	1.50
5:A:1904:3PE:H371	7:A:1912:C8U:C25	1.50	1.41
1:A:536:PHE:CE1	1:A:941:MET:CE	1.99	1.33

There are no symmetry-related clashes.

## 5.3 Torsion angles [i](#)

### 5.3.1 Protein backbone [i](#)

In the following table, the Percentiles column shows the percent Ramachandran outliers of the chain as a percentile score with respect to all PDB entries followed by that with respect to all EM entries.

The Analysed column shows the number of residues for which the backbone conformation was analysed, and the total number of residues.

Mol	Chain	Analysed	Favoured	Allowed	Outliers	Percentiles	
1	A	1094/1873 (58%)	1017 (93%)	77 (7%)	0	100	100
2	E	159/222 (72%)	143 (90%)	15 (9%)	1 (1%)	21	50
3	F	968/1105 (88%)	876 (90%)	92 (10%)	0	100	100
All	All	2221/3200 (69%)	2036 (92%)	184 (8%)	1 (0%)	100	100

All (1) Ramachandran outliers are listed below:

Mol	Chain	Res	Type
2	E	205	PRO

### 5.3.2 Protein sidechains [i](#)

In the following table, the Percentiles column shows the percent sidechain outliers of the chain as a percentile score with respect to all PDB entries followed by that with respect to all EM entries.

The Analysed column shows the number of residues for which the sidechain conformation was analysed, and the total number of residues.

Mol	Chain	Analysed	Rotameric	Outliers	Percentiles	
1	A	980/1628 (60%)	853 (87%)	127 (13%)	4	16
2	E	143/192 (74%)	130 (91%)	13 (9%)	9	30
3	F	868/973 (89%)	798 (92%)	70 (8%)	11	36
All	All	1991/2793 (71%)	1781 (90%)	210 (10%)	9	23

5 of 210 residues with a non-rotameric sidechain are listed below:

Mol	Chain	Res	Type
1	A	1289	PHE
3	F	69	THR
3	F	871	THR
1	A	1308	THR
2	E	22	LEU

Sometimes sidechains can be flipped to improve hydrogen bonding and reduce clashes. 5 of 41 such sidechains are listed below:

Mol	Chain	Res	Type
3	F	450	ASN
3	F	697	ASN
3	F	470	ASN
3	F	655	ASN
3	F	847	ASN

### 5.3.3 RNA [i](#)

There are no RNA molecules in this entry.

## 5.4 Non-standard residues in protein, DNA, RNA chains [i](#)

There are no non-standard protein/DNA/RNA residues in this entry.

## 5.5 Carbohydrates [i](#)

There are no oligosaccharides in this entry.

## 5.6 Ligand geometry [i](#)

Of 12 ligands modelled in this entry, 1 is monoatomic - leaving 11 for Mogul analysis.

In the following table, the Counts columns list the number of bonds (or angles) for which Mogul statistics could be retrieved, the number of bonds (or angles) that are observed in the model and the number of bonds (or angles) that are defined in the Chemical Component Dictionary. The Link column lists molecule types, if any, to which the group is linked. The Z score for a bond length (or angle) is the number of standard deviations the observed value is removed from the expected value. A bond length (or angle) with  $|Z| > 2$  is considered an outlier worth inspection. RMSZ is the root-mean-square of all Z scores of the bond lengths (or angles).

Mol	Type	Chain	Res	Link	Bond lengths			Bond angles		
					Counts	RMSZ	# Z  > 2	Counts	RMSZ	# Z  > 2
5	3PE	A	1911	-	50,50,50	0.92	2 (4%)	53,55,55	1.04	3 (5%)
5	3PE	A	1903	-	35,35,50	1.10	2 (5%)	38,40,55	1.16	3 (7%)
5	3PE	A	1907	-	37,37,50	1.07	2 (5%)	40,42,55	1.16	3 (7%)
6	PC1	A	1909	-	53,53,53	0.94	2 (3%)	59,61,61	1.00	3 (5%)
5	3PE	A	1906	-	43,43,50	0.99	2 (4%)	46,48,55	1.11	3 (6%)
5	3PE	A	1905	-	50,50,50	0.93	2 (4%)	53,55,55	1.08	3 (5%)
5	3PE	A	1908	-	20,20,50	1.03	1 (5%)	22,23,55	0.97	1 (4%)
5	3PE	A	1902	-	32,32,50	1.14	2 (6%)	35,37,55	1.22	3 (8%)
5	3PE	A	1904	-	50,50,50	0.93	2 (4%)	53,55,55	1.04	2 (3%)
5	3PE	A	1910	-	31,31,50	1.17	2 (6%)	34,36,55	1.23	3 (8%)
7	C8U	A	1912	-	24,26,26	4.13	8 (33%)	32,39,39	2.57	9 (28%)

In the following table, the Chirals column lists the number of chiral outliers, the number of chiral centers analysed, the number of these observed in the model and the number defined in the Chemical Component Dictionary. Similar counts are reported in the Torsion and Rings columns. '-' means no outliers of that kind were identified.

Mol	Type	Chain	Res	Link	Chirals	Torsions	Rings
5	3PE	A	1911	-	-	30/54/54/54	-
5	3PE	A	1903	-	-	23/39/39/54	-
5	3PE	A	1907	-	-	20/41/41/54	-
6	PC1	A	1909	-	-	31/57/57/57	-
5	3PE	A	1906	-	-	20/47/47/54	-

*Continued on next page...*

*Continued from previous page...*

Mol	Type	Chain	Res	Link	Chirals	Torsions	Rings
5	3PE	A	1905	-	-	32/54/54/54	-
5	3PE	A	1908	-	-	11/21/21/54	-
5	3PE	A	1902	-	-	19/36/36/54	-
5	3PE	A	1904	-	-	36/54/54/54	-
5	3PE	A	1910	-	-	14/35/35/54	-
7	C8U	A	1912	-	-	8/18/40/40	0/2/2/2

The worst 5 of 27 bond length outliers are listed below:

Mol	Chain	Res	Type	Atoms	Z	Observed(Å)	Ideal(Å)
7	A	1912	C8U	C02-C03	14.09	1.52	1.35
7	A	1912	C8U	O10-N09	10.27	1.40	1.22
7	A	1912	C8U	C06-N07	5.54	1.45	1.38
7	A	1912	C8U	C02-N07	4.69	1.44	1.38
5	A	1910	3PE	O31-C31	4.33	1.46	1.33

The worst 5 of 36 bond angle outliers are listed below:

Mol	Chain	Res	Type	Atoms	Z	Observed(°)	Ideal(°)
7	A	1912	C8U	C01-C02-C03	-7.77	119.88	127.61
7	A	1912	C8U	C01-C02-N07	5.63	119.96	113.42
7	A	1912	C8U	C08-C06-N07	5.37	119.67	113.42
5	A	1905	3PE	O21-C21-C22	4.60	121.43	111.48
5	A	1904	3PE	O21-C21-C22	4.28	120.73	111.48

There are no chirality outliers.

5 of 244 torsion outliers are listed below:

Mol	Chain	Res	Type	Atoms
5	A	1902	3PE	C11-O13-P-O11
5	A	1902	3PE	O13-C11-C12-N
5	A	1902	3PE	O22-C21-O21-C2
5	A	1902	3PE	C22-C21-O21-C2
5	A	1903	3PE	C1-O11-P-O12

There are no ring outliers.

11 monomers are involved in 127 short contacts:

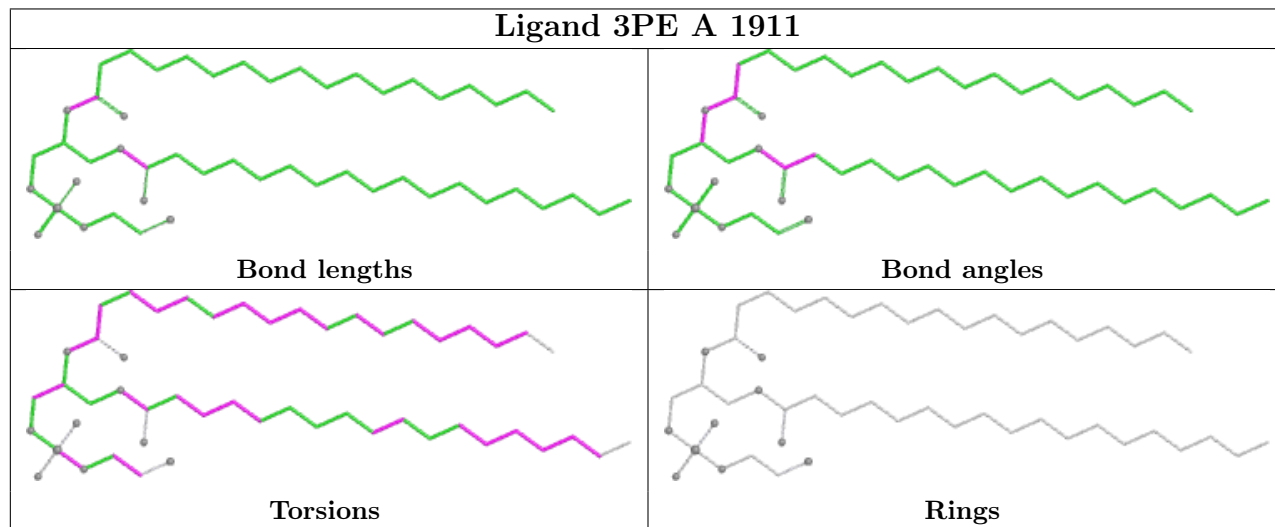
Mol	Chain	Res	Type	Clashes	Symm-Clashes
5	A	1911	3PE	13	0

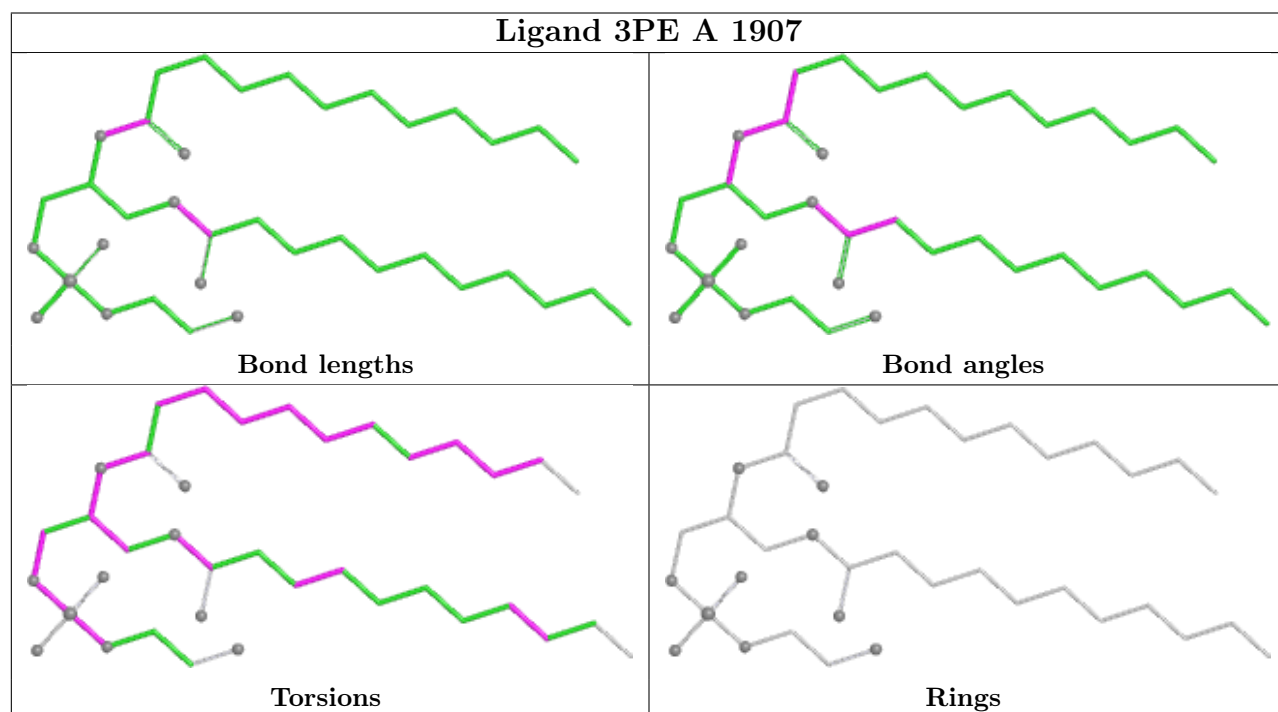
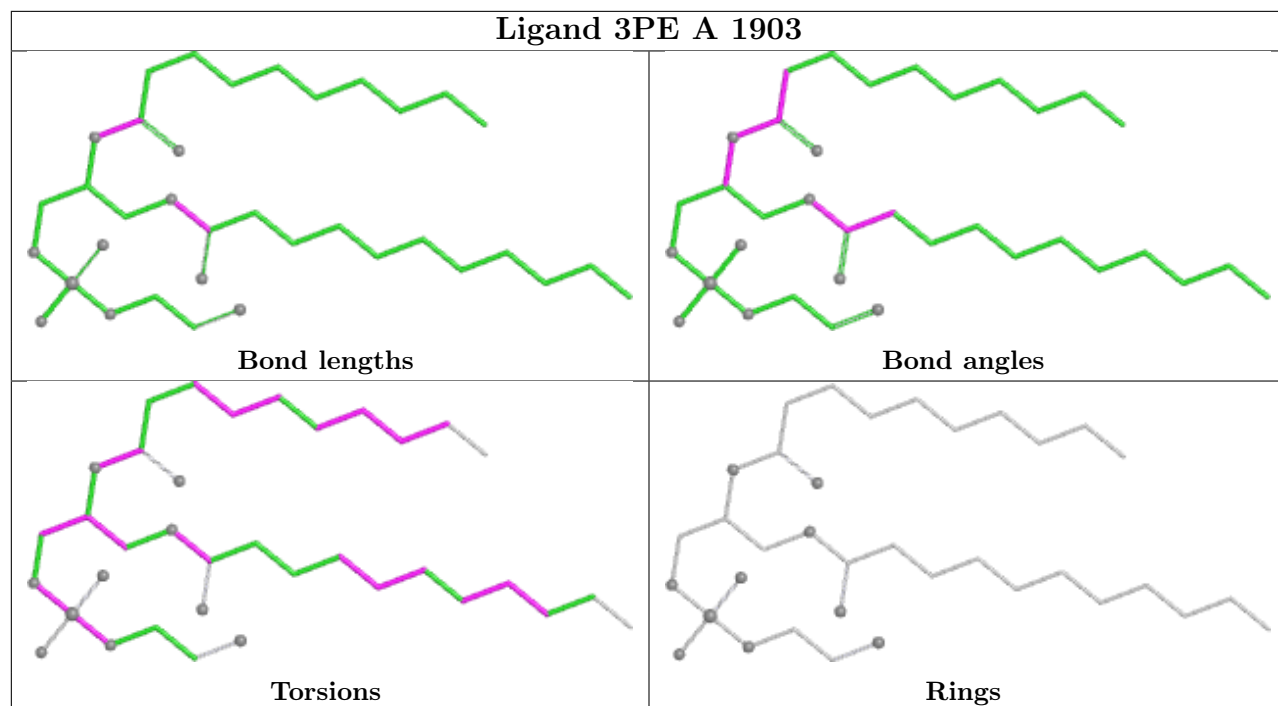
*Continued on next page...*

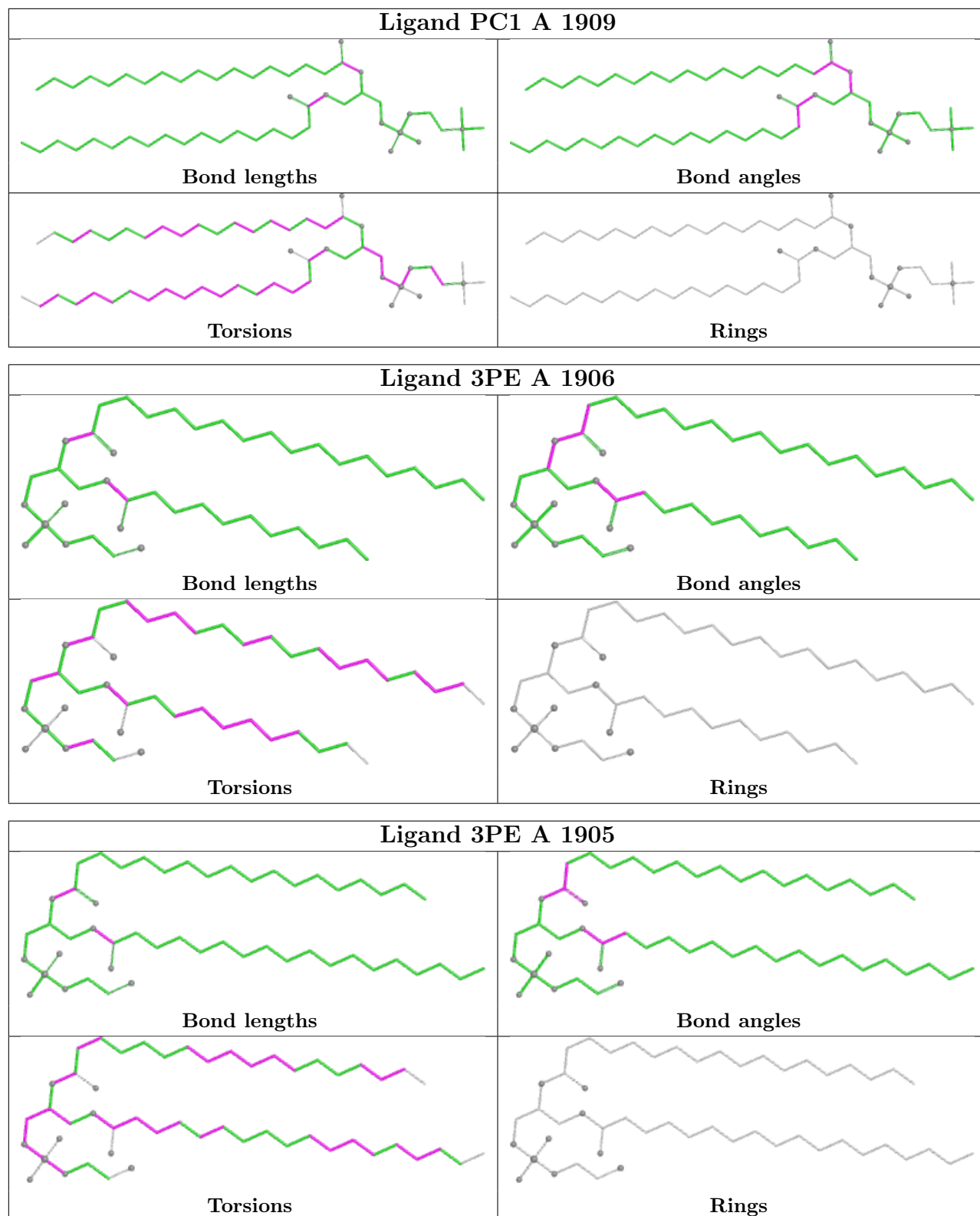
Continued from previous page...

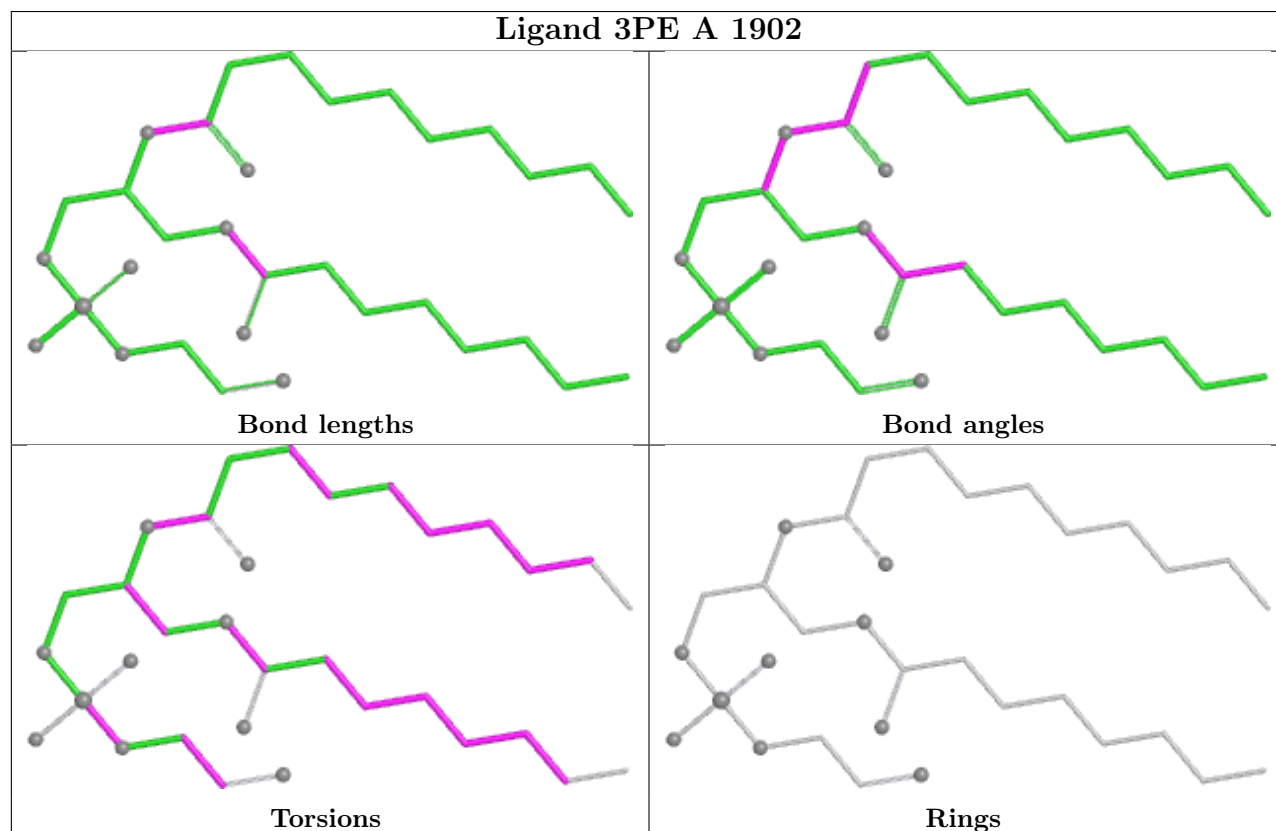
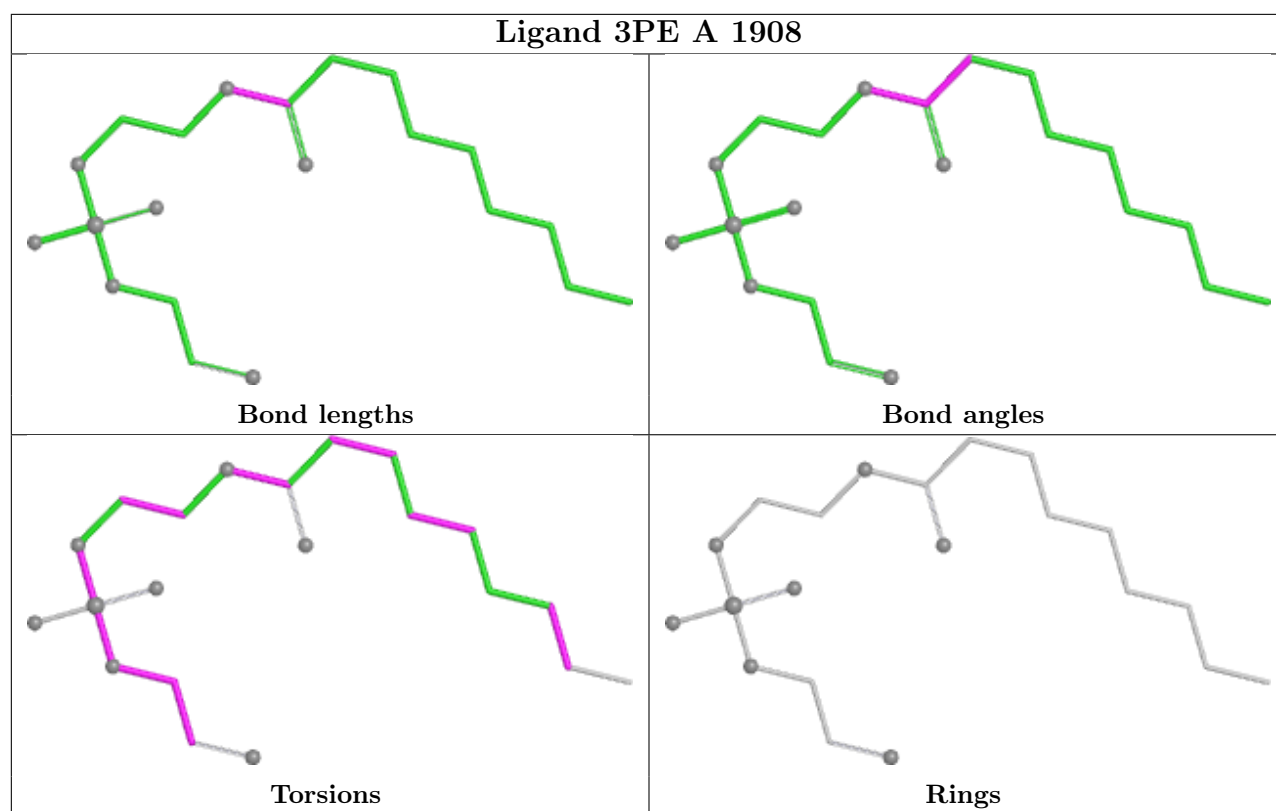
Mol	Chain	Res	Type	Clashes	Symm-Clashes
5	A	1903	3PE	17	0
5	A	1907	3PE	17	0
6	A	1909	PC1	12	0
5	A	1906	3PE	17	0
5	A	1905	3PE	17	0
5	A	1908	3PE	11	0
5	A	1902	3PE	2	0
5	A	1904	3PE	17	0
5	A	1910	3PE	9	0
7	A	1912	C8U	6	0

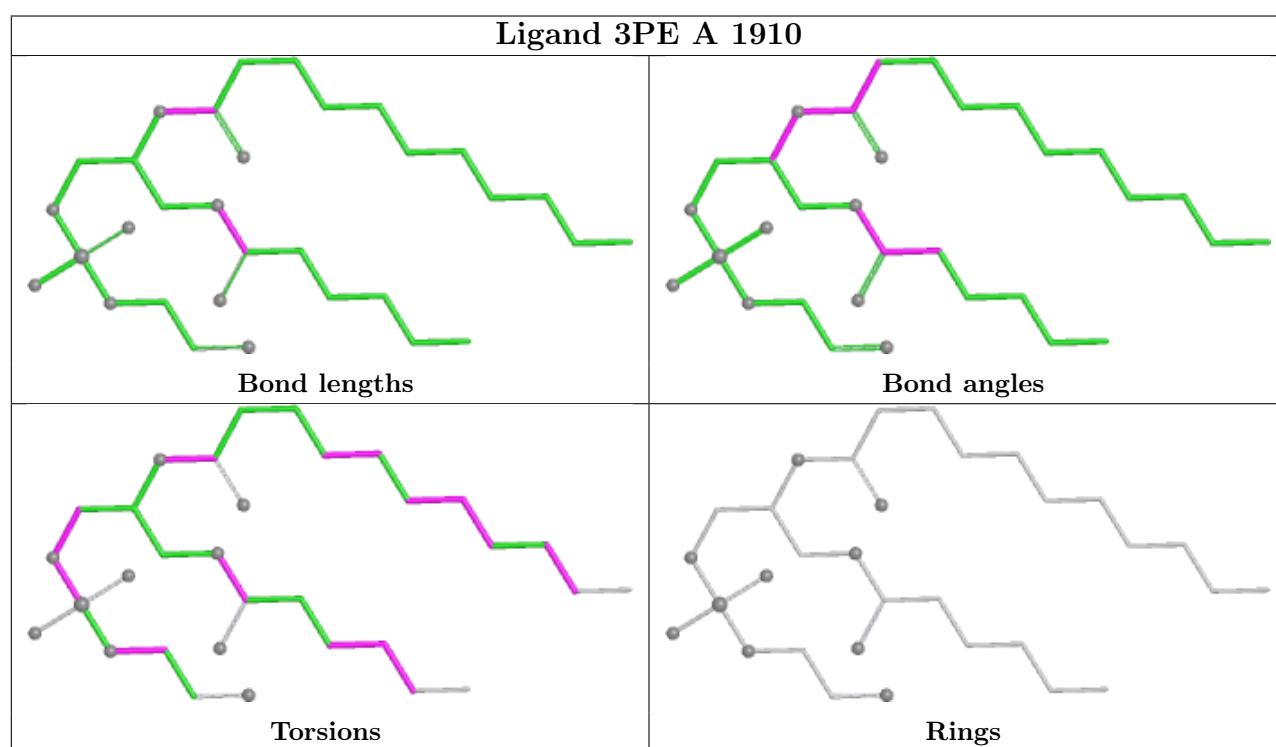
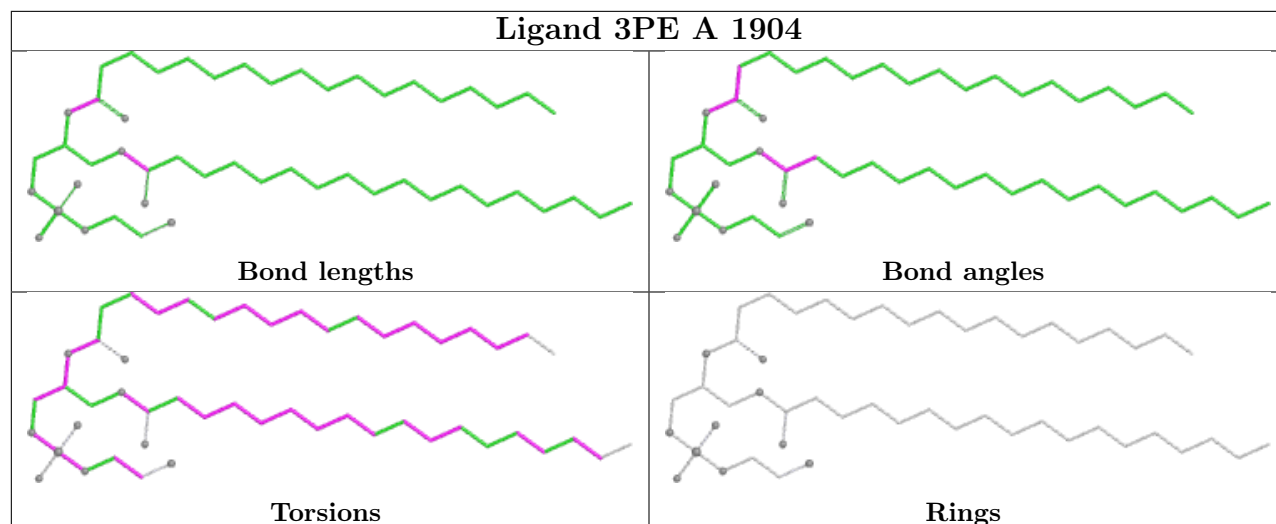
The following is a two-dimensional graphical depiction of Mogul quality analysis of bond lengths, bond angles, torsion angles, and ring geometry for all instances of the Ligand of Interest. In addition, ligands with molecular weight > 250 and outliers as shown on the validation Tables will also be included. For torsion angles, if less than 5% of the Mogul distribution of torsion angles is within 10 degrees of the torsion angle in question, then that torsion angle is considered an outlier. Any bond that is central to one or more torsion angles identified as an outlier by Mogul will be highlighted in the graph. For rings, the root-mean-square deviation (RMSD) between the ring in question and similar rings identified by Mogul is calculated over all ring torsion angles. If the average RMSD is greater than 60 degrees and the minimal RMSD between the ring in question and any Mogul-identified rings is also greater than 60 degrees, then that ring is considered an outlier. The outliers are highlighted in purple. The color gray indicates Mogul did not find sufficient equivalents in the CSD to analyse the geometry.

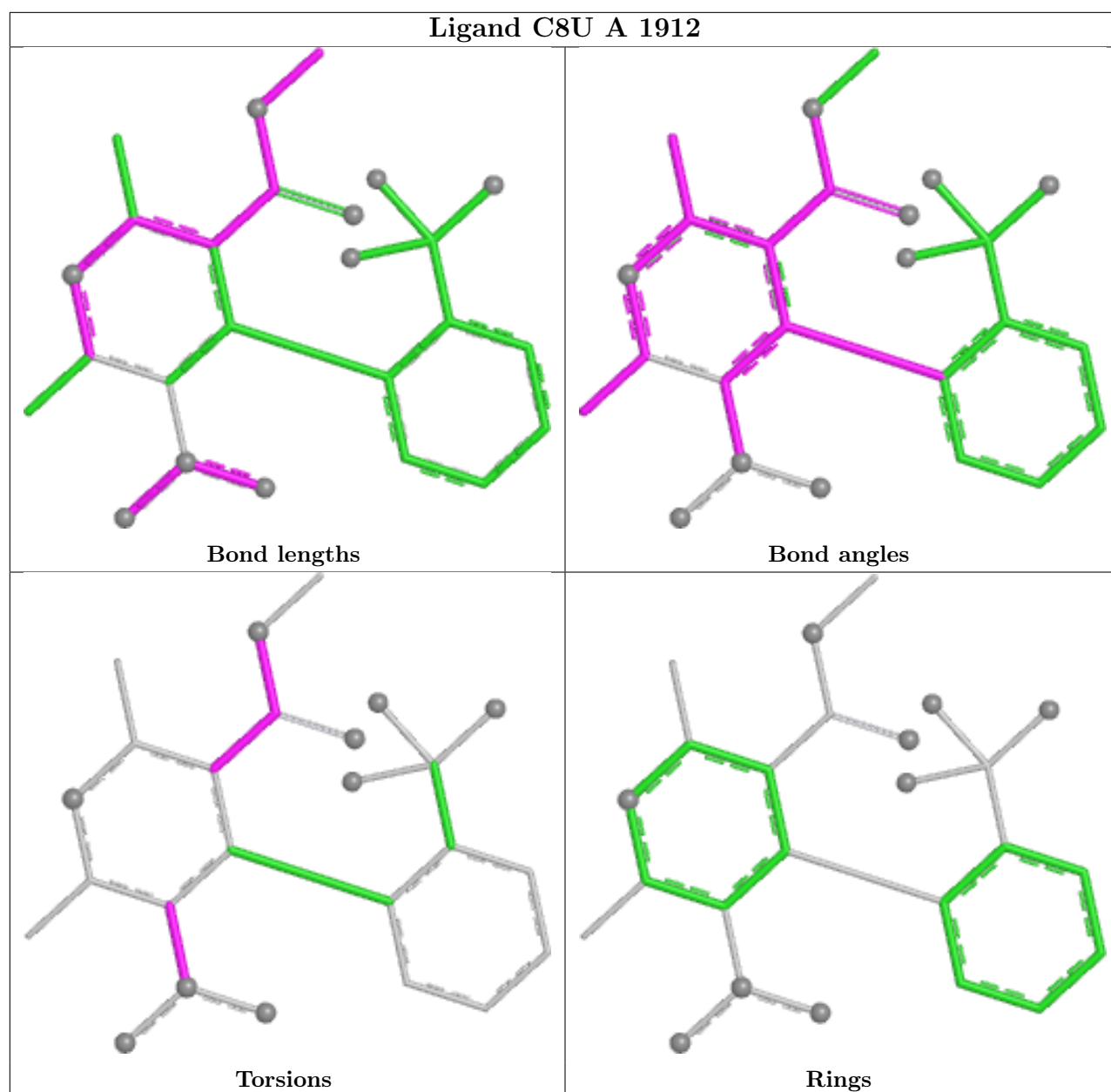












## 5.7 Other polymers [i](#)

There are no such residues in this entry.

## 5.8 Polymer linkage issues [i](#)

There are no chain breaks in this entry.

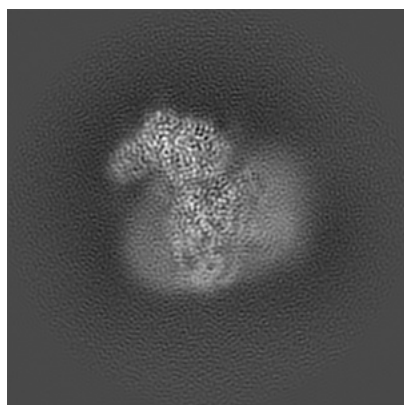
## 6 Map visualisation [i](#)

This section contains visualisations of the EMDB entry EMD-22415. These allow visual inspection of the internal detail of the map and identification of artifacts.

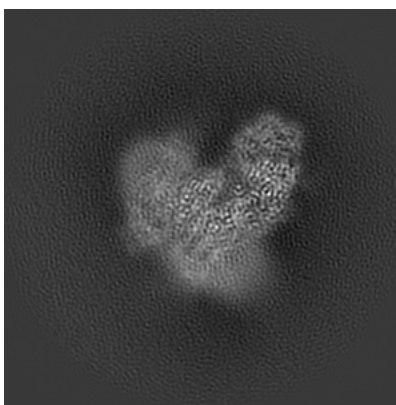
No raw map or half-maps were deposited for this entry and therefore no images, graphs, etc. pertaining to the raw map can be shown.

### 6.1 Orthogonal projections [i](#)

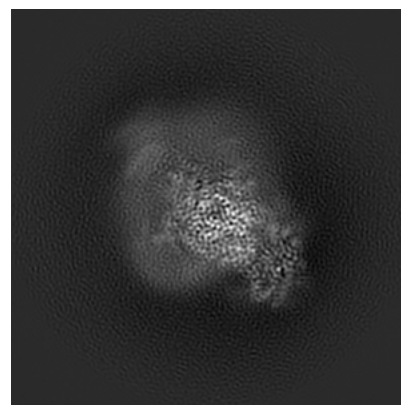
#### 6.1.1 Primary map



X



Y

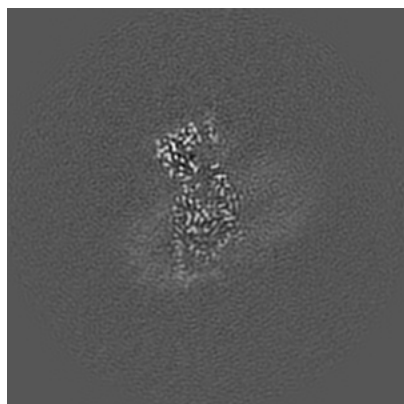


Z

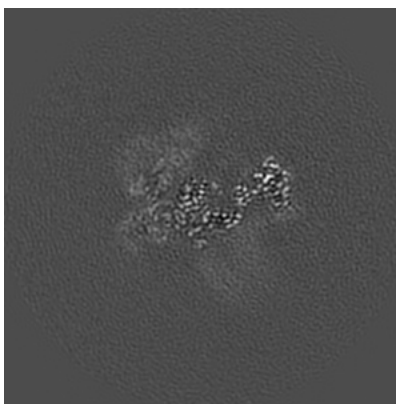
The images above show the map projected in three orthogonal directions.

### 6.2 Central slices [i](#)

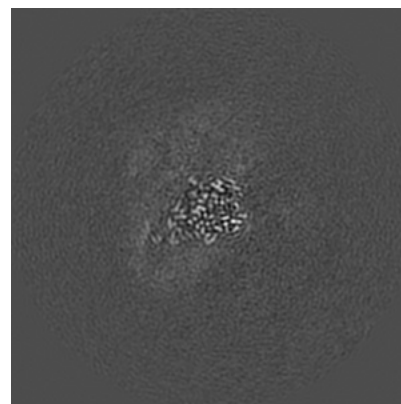
#### 6.2.1 Primary map



X Index: 140



Y Index: 140

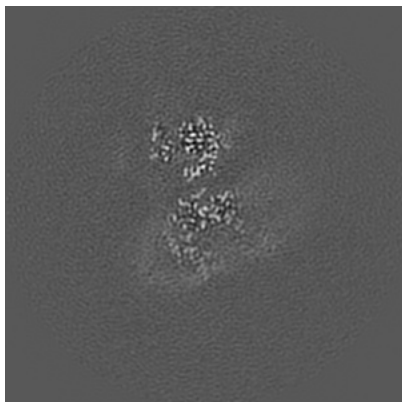


Z Index: 140

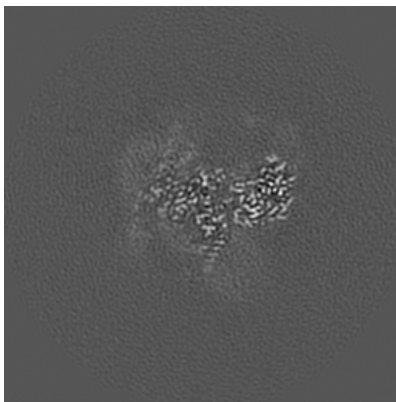
The images above show central slices of the map in three orthogonal directions.

## 6.3 Largest variance slices [i](#)

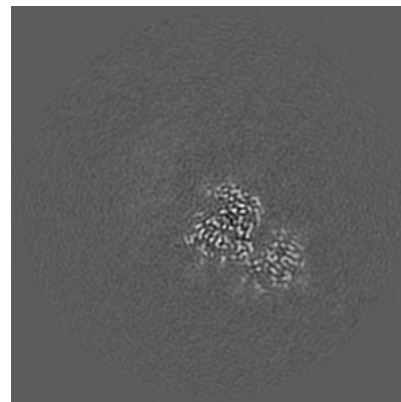
### 6.3.1 Primary map



X Index: 151



Y Index: 130

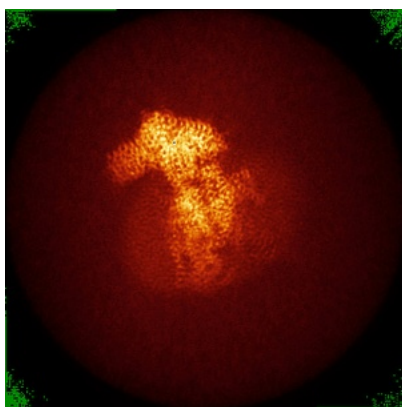


Z Index: 184

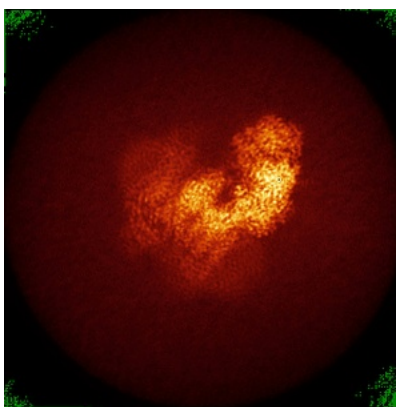
The images above show the largest variance slices of the map in three orthogonal directions.

## 6.4 Orthogonal standard-deviation projections (False-color) [i](#)

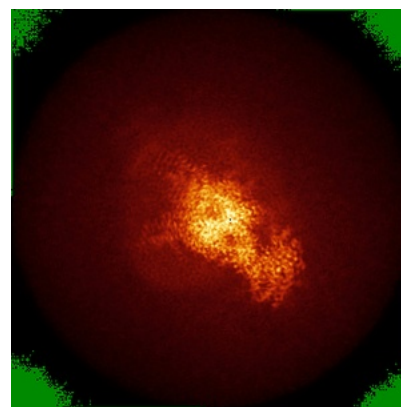
### 6.4.1 Primary map



X



Y



Z

The images above show the map standard deviation projections with false color in three orthogonal directions. Minimum values are shown in green, max in blue, and dark to light orange shades represent small to large values respectively.

## 6.5 Orthogonal surface views

This section was not generated.

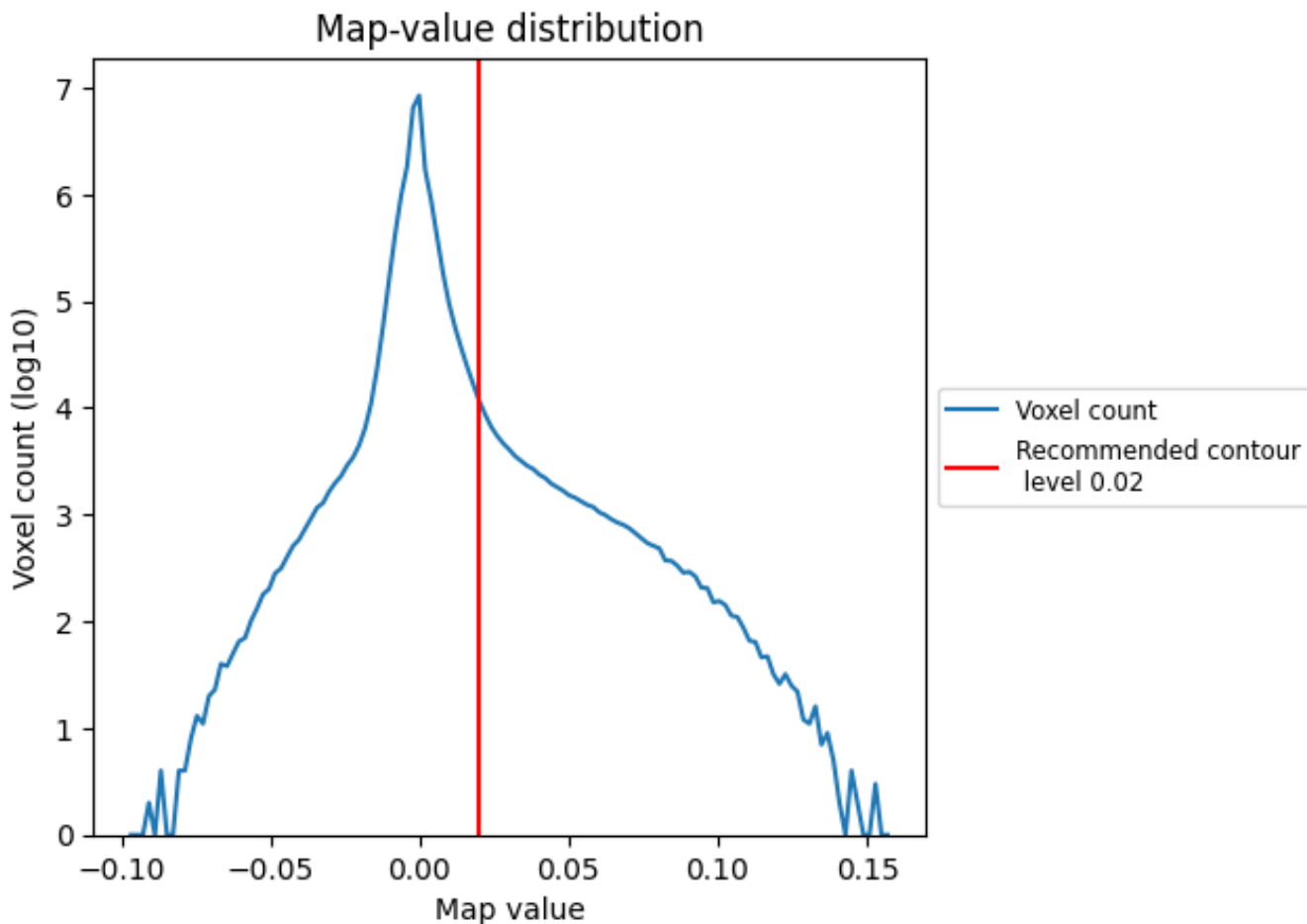
## 6.6 Mask visualisation

This section was not generated. No masks/segmentation were deposited.

## 7 Map analysis [i](#)

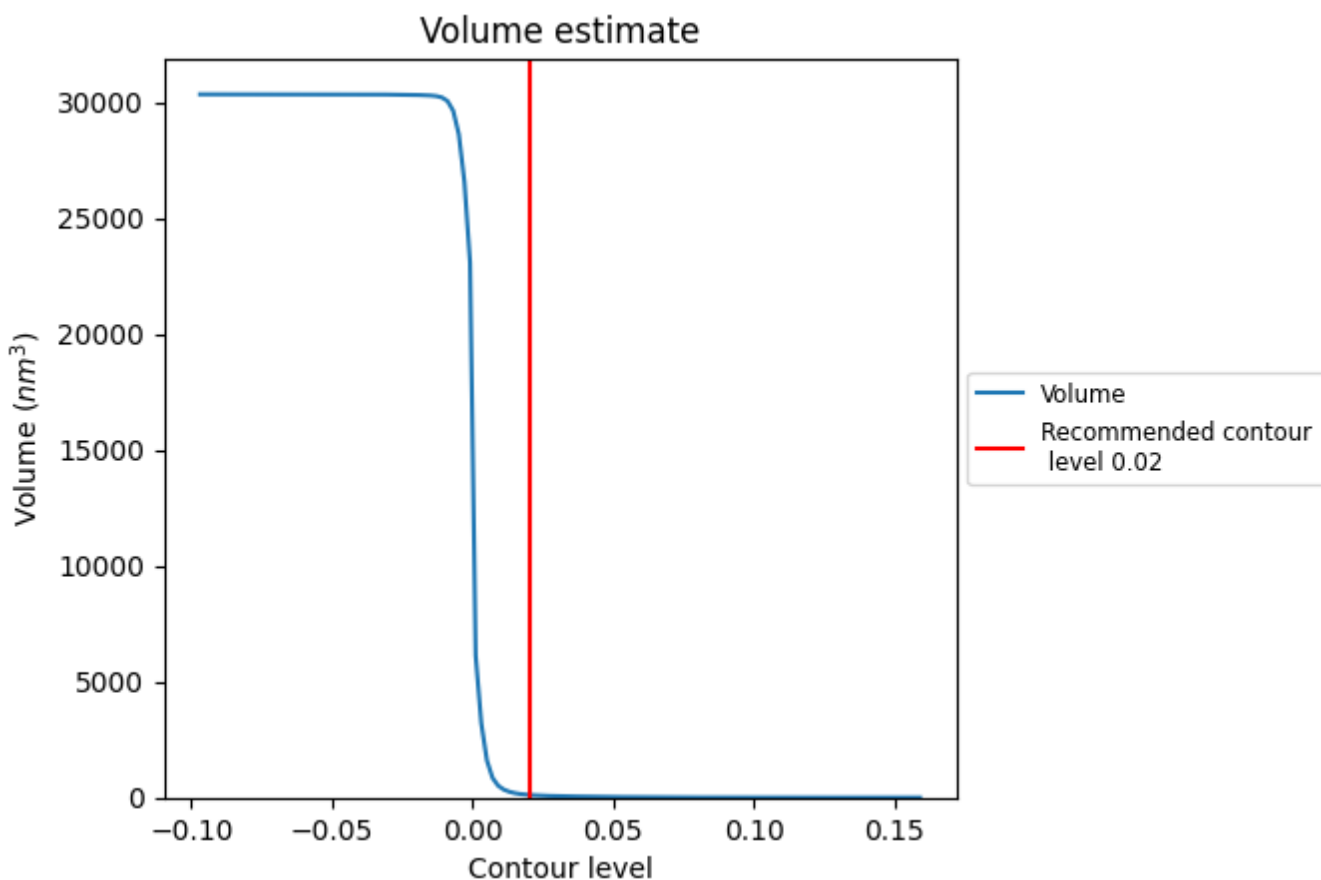
This section contains the results of statistical analysis of the map.

### 7.1 Map-value distribution [i](#)



The map-value distribution is plotted in 128 intervals along the x-axis. The y-axis is logarithmic. A spike in this graph at zero usually indicates that the volume has been masked.

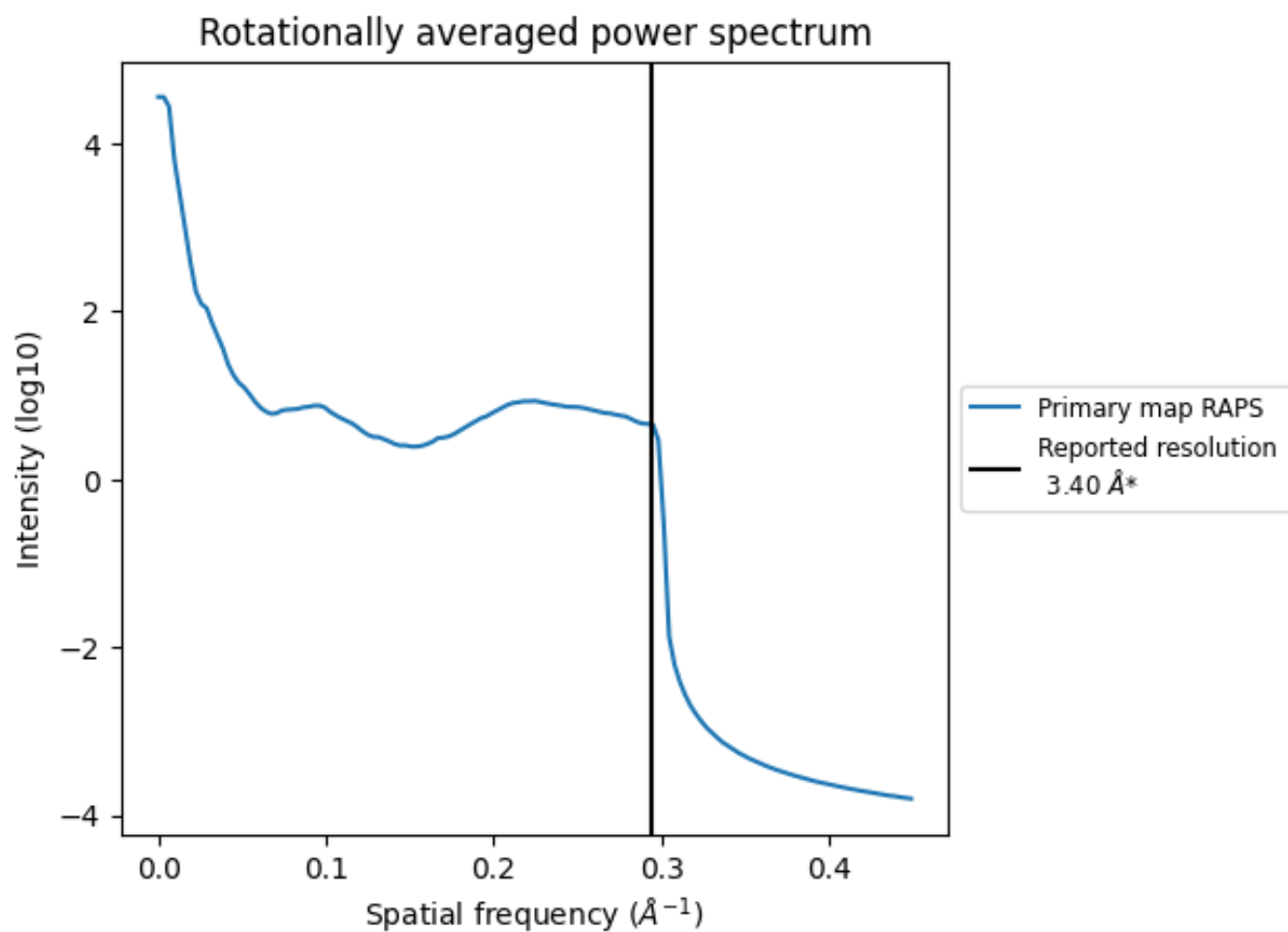
## 7.2 Volume estimate [i](#)



The volume at the recommended contour level is 114 nm<sup>3</sup>; this corresponds to an approximate mass of 103 kDa.

The volume estimate graph shows how the enclosed volume varies with the contour level. The recommended contour level is shown as a vertical line and the intersection between the line and the curve gives the volume of the enclosed surface at the given level.

### 7.3 Rotationally averaged power spectrum [i](#)



\*Reported resolution corresponds to spatial frequency of  $0.294 \text{\AA}^{-1}$

## 8 Fourier-Shell correlation

This section was not generated. No FSC curve or half-maps provided.

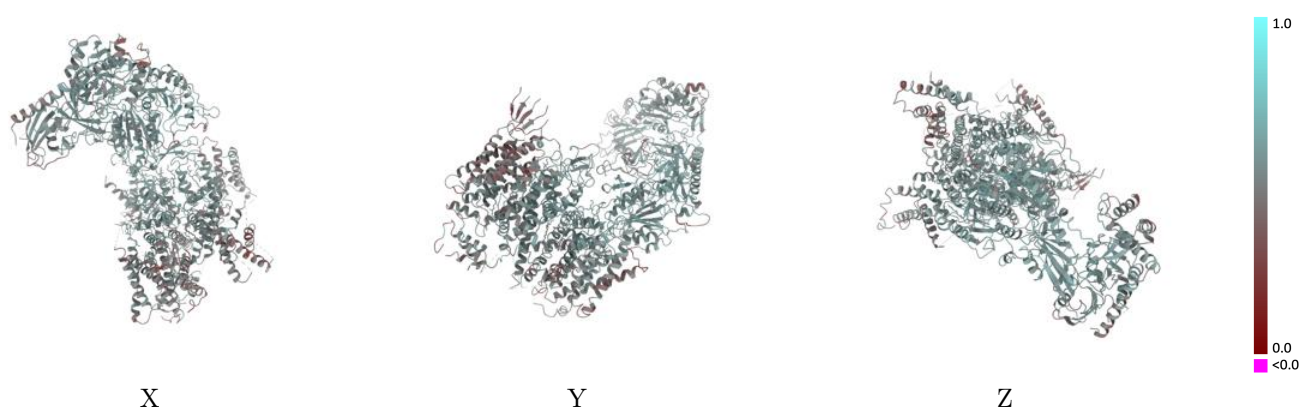
## 9 Map-model fit [i](#)

This section contains information regarding the fit between EMDB map EMD-22415 and PDB model 7JPL. Per-residue inclusion information can be found in section 3 on page 6.

### 9.1 Map-model overlay [i](#)

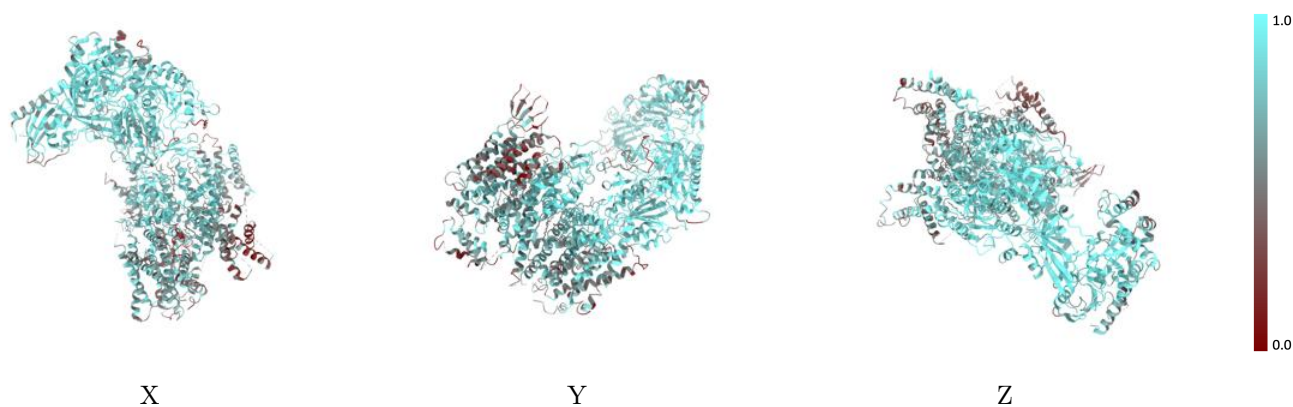
This section was not generated.

### 9.2 Q-score mapped to coordinate model [i](#)



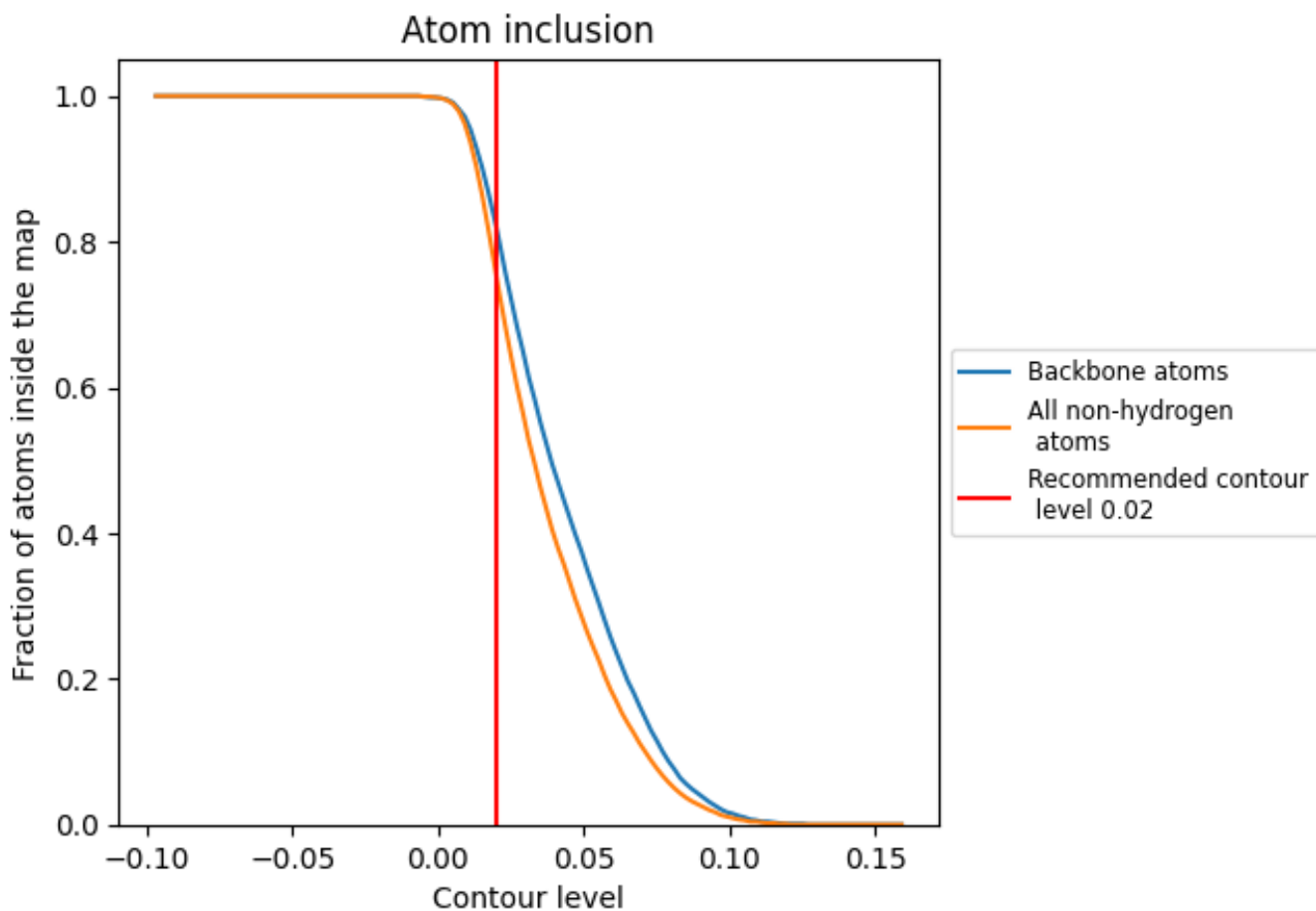
The images above show the model with each residue coloured according to its Q-score. This shows their resolvability in the map with higher Q-score values reflecting better resolvability. Please note: Q-score is calculating the resolvability of atoms, and thus high values are only expected at resolutions at which atoms can be resolved. Low Q-score values may therefore be expected for many entries.

### 9.3 Atom inclusion mapped to coordinate model [i](#)



The images above show the model with each residue coloured according to its atom inclusion. This shows to what extent they are inside the map at the recommended contour level (0.02).









## 9.4 Atom inclusion [i](#)



At the recommended contour level, 82% of all backbone atoms, 75% of all non-hydrogen atoms, are inside the map.

## 9.5 Map-model fit summary

The table lists the average atom inclusion at the recommended contour level (0.02) and Q-score for the entire model and for each chain.

Chain	Atom inclusion	Q-score
All	 0.7510	 0.5300
A	 0.7080	 0.5230
E	 0.5670	 0.4570
F	 0.8350	 0.5510

