



# wwPDB X-ray Structure Validation Summary Report

Mar 9, 2026 – 09:12 PM UTC

PDB ID : 3JSU / pdb\_00003jsu  
Title : Quadruple mutant(N51I+C59R+S108N+I164L) plasmodium falciparum dihydrofolate reductase-thymidylate synthase(PFDHFR-TS) complexed with QN254, NADPH, and dUMP  
Authors : Chitnumsub, P.; Maneeruttanarungroj, C.; Kamchonwongpaisan, S.; Yuthavong, Y.; Diagana, T.T.  
Deposited on : 2009-09-11  
Resolution : 2.70 Å(reported)

This is a wwPDB X-ray Structure Validation Summary Report for a publicly released PDB entry.

We welcome your comments at [validation@mail.wwpdb.org](mailto:validation@mail.wwpdb.org)

A user guide is available at

<https://www.wwpdb.org/validation/2017/XrayValidationReportHelp>

with specific help available everywhere you see the  symbol.

The types of validation reports are described at

<http://www.wwpdb.org/validation/2017/FAQs#types>.

---

The following versions of software and data (see [references](#) ①) were used in the production of this report:

MolProbity : 4-5-2 with Phenix2.0  
Mogul : 2022.3.0, CSD as543be (2022)  
Xtrriage (Phenix) : 2.0  
EDS : 3.0  
Buster-report : wwPDB partial adaption of 1.1.7 (2018)  
Percentile statistics : 20250101.v01 (using entries in the PDB archive January 1st 2025)  
CCP4 : 9.0.010 (Gargrove)  
Density-Fitness : 1.0.12  
Ideal geometry (proteins) : Engh & Huber (2001)  
Ideal geometry (DNA, RNA) : Parkinson et al. (1996)  
Validation Pipeline (wwPDB-VP) : 2.49

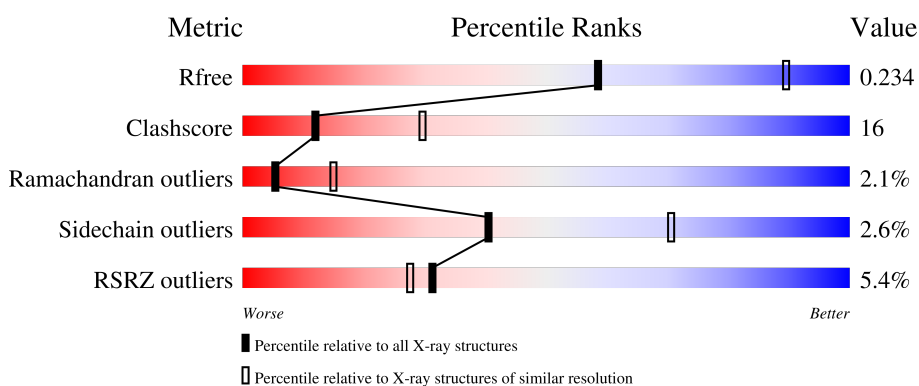
# 1 Overall quality at a glance

The following experimental techniques were used to determine the structure:

*X-RAY DIFFRACTION*

The reported resolution of this entry is 2.70 Å.

Percentile scores (ranging between 0-100) for global validation metrics of the entry are shown in the following graphic. The table shows the number of entries on which the scores are based.



Metric	Whole archive (#Entries)	Similar resolution (#Entries, resolution range(Å))
$R_{free}$	180053	3538 (2.70-2.70)
Clashscore	190562	3843 (2.70-2.70)
Ramachandran outliers	187476	3778 (2.70-2.70)
Sidechain outliers	187428	3778 (2.70-2.70)
RSRZ outliers	180081	3538 (2.70-2.70)

The table below summarises the geometric issues observed across the polymeric chains and their fit to the electron density. The red, orange, yellow and green segments of the lower bar indicate the fraction of residues that contain outliers for  $\geq 3$ , 2, 1 and 0 types of geometric quality criteria respectively. A grey segment represents the fraction of residues that are not modelled. The numeric value for each fraction is indicated below the corresponding segment, with a dot representing fractions  $\leq 5\%$ . The upper red bar (where present) indicates the fraction of residues that have poor fit to the electron density. The numeric value is given above the bar.

Mol	Chain	Length	Quality of chain
1	A	608	 4% 59% 27% • 10%
1	B	608	 6% 60% 26% • 11%

## 2 Entry composition

There are 5 unique types of molecules in this entry. The entry contains 9487 atoms, of which 0 are hydrogens and 0 are deuteriums.

In the tables below, the ZeroOcc column contains the number of atoms modelled with zero occupancy, the AltConf column contains the number of residues with at least one atom in alternate conformation and the Trace column contains the number of residues modelled with at most 2 atoms.

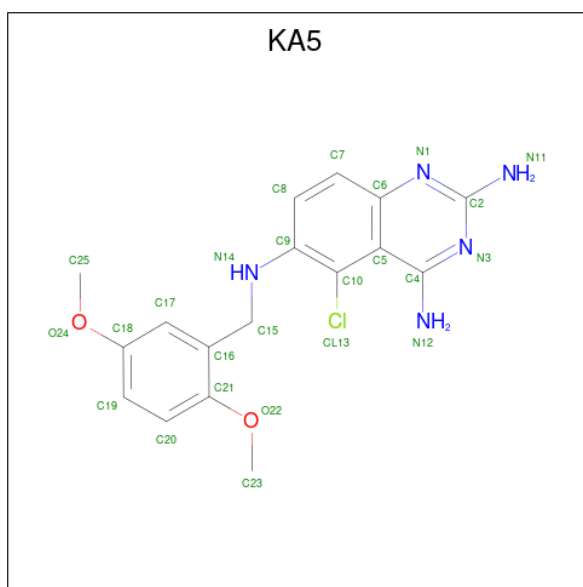
- Molecule 1 is a protein called Dihydrofolate reductase-thymidylate synthase.

Mol	Chain	Residues	Atoms					ZeroOcc	AltConf	Trace
			Total	C	N	O	S			
1	A	545	4539	2931	751	830	27	0	0	0
1	B	542	4511	2914	747	825	25	0	0	0

There are 8 discrepancies between the modelled and reference sequences:

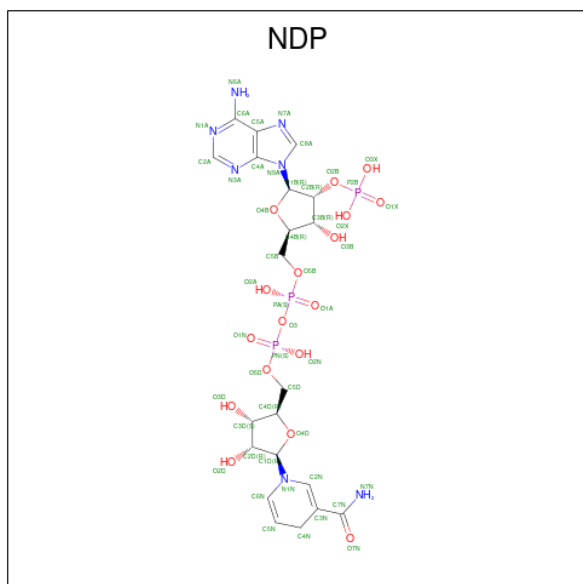
Chain	Residue	Modelled	Actual	Comment	Reference
A	51	ILE	ASN	engineered mutation	UNP A7UD79
A	59	ARG	TYR	engineered mutation	UNP A7UD79
A	108	ASN	SER	engineered mutation	UNP A7UD79
A	164	LEU	ILE	engineered mutation	UNP A7UD79
B	51	ILE	ASN	engineered mutation	UNP A7UD79
B	59	ARG	TYR	engineered mutation	UNP A7UD79
B	108	ASN	SER	engineered mutation	UNP A7UD79
B	164	LEU	ILE	engineered mutation	UNP A7UD79

- Molecule 2 is 5-chloro-N 6 -(2,5-dimethoxybenzyl)quinazoline-2,4,6-triamine (CCD ID: KA5) (formula: C<sub>17</sub>H<sub>18</sub>ClN<sub>5</sub>O<sub>2</sub>).



Mol	Chain	Residues	Atoms				ZeroOcc	AltConf	
			Total	C	Cl	N			O
2	A	1	25	17	1	5	2	0	0
2	B	1	25	17	1	5	2	0	0

- Molecule 3 is NADPH DIHYDRO-NICOTINAMIDE-ADENINE-DINUCLEOTIDE PHOSPHATE (CCD ID: NDP) (formula:  $C_{21}H_{30}N_7O_{17}P_3$ ).



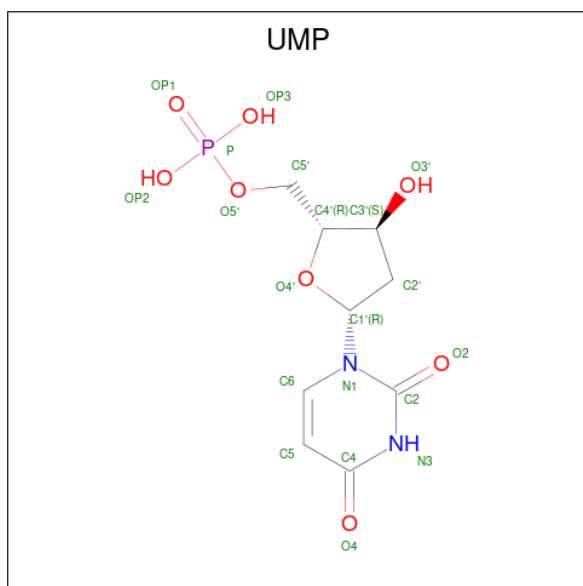
Mol	Chain	Residues	Atoms				ZeroOcc	AltConf	
			Total	C	N	O			P
3	A	1	48	21	7	17	3	0	0

*Continued on next page...*

Continued from previous page...

Mol	Chain	Residues	Atoms					ZeroOcc	AltConf
			Total	C	N	O	P		
3	B	1	48	21	7	17	3	0	0

- Molecule 4 is 2'-DEOXYURIDINE 5'-MONOPHOSPHATE (CCD ID: UMP) (formula: C<sub>9</sub>H<sub>13</sub>N<sub>2</sub>O<sub>8</sub>P).

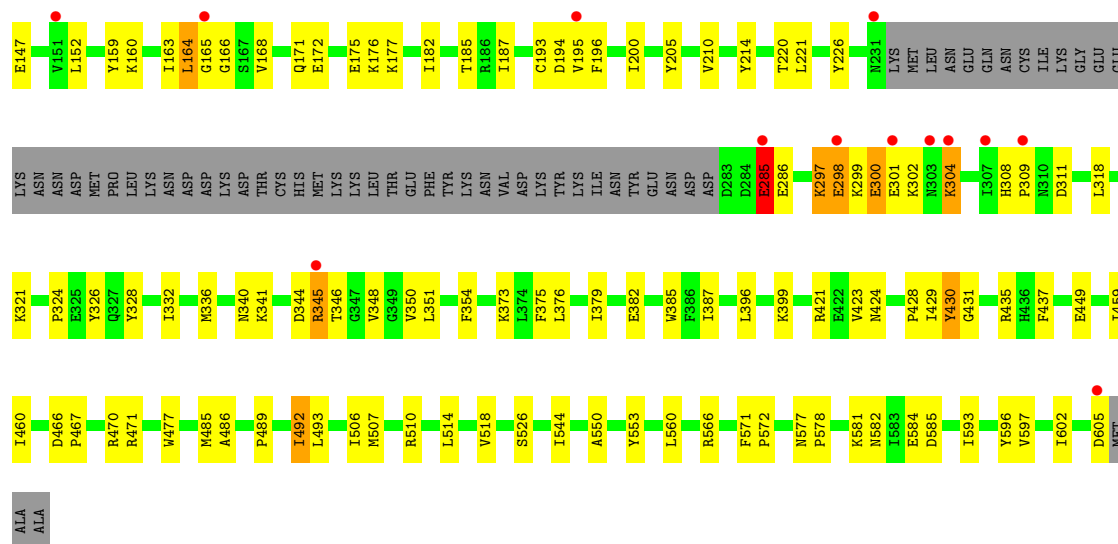


Mol	Chain	Residues	Atoms					ZeroOcc	AltConf
			Total	C	N	O	P		
4	A	1	20	9	2	8	1	0	0
4	B	1	20	9	2	8	1	0	0

- Molecule 5 is water.

Mol	Chain	Residues	Atoms		ZeroOcc	AltConf
5	A	124	Total	O	0	0
			124	124		
5	B	127	Total	O	0	0
			127	127		





## 4 Data and refinement statistics i

Property	Value	Source
Space group	P 21 21 21	Depositor
Cell constants a, b, c, $\alpha$ , $\beta$ , $\gamma$	58.99Å 157.38Å 165.51Å 90.00° 90.00° 90.00°	Depositor
Resolution (Å)	29.50 – 2.70 29.50 – 2.70	Depositor EDS
% Data completeness (in resolution range)	99.7 (29.50-2.70) 99.6 (29.50-2.70)	Depositor EDS
$R_{merge}$	(Not available)	Depositor
$R_{sym}$	0.07	Depositor
$\langle I/\sigma(I) \rangle$ <sup>1</sup>	2.92 (at 2.69Å)	Xtrriage
Refinement program	CNS 1.2	Depositor
R, $R_{free}$	0.206 , 0.233 0.206 , 0.234	Depositor DCC
$R_{free}$ test set	2169 reflections (5.02%)	wwPDB-VP
Wilson B-factor (Å <sup>2</sup> )	42.9	Xtrriage
Anisotropy	0.407	Xtrriage
Bulk solvent $k_{sol}$ (e/Å <sup>3</sup> ), $B_{sol}$ (Å <sup>2</sup> )	0.31 , 37.2	EDS
L-test for twinning <sup>2</sup>	$\langle  L  \rangle = 0.50$ , $\langle L^2 \rangle = 0.34$	Xtrriage
Estimated twinning fraction	0.006 for -h,l,k	Xtrriage
$F_o, F_c$ correlation	0.93	EDS
Total number of atoms	9487	wwPDB-VP
Average B, all atoms (Å <sup>2</sup> )	49.0	wwPDB-VP

Xtrriage's analysis on translational NCS is as follows: *The largest off-origin peak in the Patterson function is 3.67% of the height of the origin peak. No significant pseudotranslation is detected.*

<sup>1</sup>Intensities estimated from amplitudes.

<sup>2</sup>Theoretical values of  $\langle |L| \rangle$ ,  $\langle L^2 \rangle$  for acentric reflections are 0.5, 0.333 respectively for untwinned datasets, and 0.375, 0.2 for perfectly twinned datasets.

## 5 Model quality [i](#)

### 5.1 Standard geometry [i](#)

Bond lengths and bond angles in the following residue types are not validated in this section: UMP, KA5, NDP

The Z score for a bond length (or angle) is the number of standard deviations the observed value is removed from the expected value. A bond length (or angle) with  $|Z| > 5$  is considered an outlier worth inspection. RMSZ is the root-mean-square of all Z scores of the bond lengths (or angles).

Mol	Chain	Bond lengths		Bond angles	
		RMSZ	# Z  >5	RMSZ	# Z  >5
1	A	0.40	0/4644	0.93	16/6267 (0.3%)
1	B	0.41	0/4617	0.96	20/6233 (0.3%)
All	All	0.41	0/9261	0.95	36/12500 (0.3%)

There are no bond length outliers.

The worst 5 of 36 bond angle outliers are listed below:

Mol	Chain	Res	Type	Atoms	Z	Observed(°)	Ideal(°)
1	A	25	GLU	N-CA-C	-11.47	96.76	112.94
1	A	27	LYS	N-CA-C	-9.57	101.80	113.19
1	B	117	LYS	CA-CB-CG	-8.23	97.64	114.10
1	B	118	PRO	CA-N-CD	-7.66	101.27	112.00
1	B	166	GLY	N-CA-C	-7.48	99.31	110.38

There are no chirality outliers.

There are no planarity outliers.

### 5.2 Too-close contacts [i](#)

In the following table, the Non-H and H(model) columns list the number of non-hydrogen atoms and hydrogen atoms in the chain respectively. The H(added) column lists the number of hydrogen atoms added and optimized by MolProbity. The Clashes column lists the number of clashes within the asymmetric unit, whereas Symm-Clashes lists symmetry-related clashes.

Mol	Chain	Non-H	H(model)	H(added)	Clashes	Symm-Clashes
1	A	4539	0	4501	150	0
1	B	4511	0	4467	144	0
2	A	25	0	18	1	0
2	B	25	0	18	1	0

*Continued on next page...*

Continued from previous page...

Mol	Chain	Non-H	H(model)	H(added)	Clashes	Symm-Clashes
3	A	48	0	26	2	0
3	B	48	0	26	4	0
4	A	20	0	11	0	0
4	B	20	0	11	1	0
5	A	124	0	0	6	0
5	B	127	0	0	4	0
All	All	9487	0	9078	287	0

The all-atom clashscore is defined as the number of clashes found per 1000 atoms (including hydrogen atoms). The all-atom clashscore for this structure is 16.

The worst 5 of 287 close contacts within the same asymmetric unit are listed below, sorted by their clash magnitude.

Atom-1	Atom-2	Interatomic distance (Å)	Clash overlap (Å)
1:B:117:LYS:HB3	1:B:118:PRO:HD2	1.21	1.16
1:B:376:LEU:HD22	1:B:379:ILE:HD11	1.36	1.08
1:A:1:MET:HG3	1:A:2:MET:H	1.18	1.06
1:B:346:THR:HG22	1:B:348:VAL:HG23	1.39	1.03
1:A:376:LEU:HD22	1:A:379:ILE:HD11	1.45	0.99

There are no symmetry-related clashes.

## 5.3 Torsion angles [i](#)

### 5.3.1 Protein backbone [i](#)

In the following table, the Percentiles column shows the percent Ramachandran outliers of the chain as a percentile score with respect to all X-ray entries followed by that with respect to entries of similar resolution.

The Analysed column shows the number of residues for which the backbone conformation was analysed, and the total number of residues.

Mol	Chain	Analysed	Favoured	Allowed	Outliers	Percentiles	
1	A	539/608 (89%)	486 (90%)	45 (8%)	8 (2%)	8	22
1	B	536/608 (88%)	475 (89%)	46 (9%)	15 (3%)	4	9
All	All	1075/1216 (88%)	961 (89%)	91 (8%)	23 (2%)	5	15

5 of 23 Ramachandran outliers are listed below:

Mol	Chain	Res	Type
1	A	24	ASN
1	B	118	PRO
1	B	135	ASP
1	B	298	GLU
1	B	345	ARG

### 5.3.2 Protein sidechains [i](#)

In the following table, the Percentiles column shows the percent sidechain outliers of the chain as a percentile score with respect to all X-ray entries followed by that with respect to entries of similar resolution.

The Analysed column shows the number of residues for which the sidechain conformation was analysed, and the total number of residues.

Mol	Chain	Analysed	Rotameric	Outliers	Percentiles
1	A	510/570 (90%)	496 (97%)	14 (3%)	39 69
1	B	507/570 (89%)	495 (98%)	12 (2%)	43 72
All	All	1017/1140 (89%)	991 (97%)	26 (3%)	40 70

5 of 26 residues with a non-rotameric sidechain are listed below:

Mol	Chain	Res	Type
1	B	5	VAL
1	B	49	LYS
1	B	285	GLU
1	B	45	VAL
1	B	81	LEU

Sometimes sidechains can be flipped to improve hydrogen bonding and reduce clashes. 5 of 29 such sidechains are listed below:

Mol	Chain	Res	Type
1	A	491	HIS
1	B	424	ASN
1	B	99	GLN
1	B	340	ASN
1	B	29	ASN

### 5.3.3 RNA [i](#)

There are no RNA molecules in this entry.

## 5.4 Non-standard residues in protein, DNA, RNA chains [i](#)

There are no non-standard protein/DNA/RNA residues in this entry.

## 5.5 Carbohydrates [i](#)

There are no oligosaccharides in this entry.

## 5.6 Ligand geometry [i](#)

6 ligands are modelled in this entry.

In the following table, the Counts columns list the number of bonds (or angles) for which Mogul statistics could be retrieved, the number of bonds (or angles) that are observed in the model and the number of bonds (or angles) that are defined in the Chemical Component Dictionary. The Link column lists molecule types, if any, to which the group is linked. The Z score for a bond length (or angle) is the number of standard deviations the observed value is removed from the expected value. A bond length (or angle) with  $|Z| > 2$  is considered an outlier worth inspection. RMSZ is the root-mean-square of all Z scores of the bond lengths (or angles).

Mol	Type	Chain	Res	Link	Bond lengths			Bond angles		
					Counts	RMSZ	# Z  > 2	Counts	RMSZ	# Z  > 2
2	KA5	A	609	-	27,27,27	1.45	4 (14%)	35,38,38	2.01	8 (22%)
4	UMP	A	611	-	21,21,21	2.02	7 (33%)	30,31,31	2.00	9 (30%)
3	NDP	A	610	-	51,52,52	1.62	9 (17%)	71,80,80	1.61	15 (21%)
4	UMP	B	611	-	21,21,21	2.05	8 (38%)	30,31,31	2.07	9 (30%)
2	KA5	B	609	-	27,27,27	1.53	4 (14%)	35,38,38	1.93	8 (22%)
3	NDP	B	610	-	51,52,52	1.65	11 (21%)	71,80,80	1.57	12 (16%)

In the following table, the Chirals column lists the number of chiral outliers, the number of chiral centers analysed, the number of these observed in the model and the number defined in the Chemical Component Dictionary. Similar counts are reported in the Torsion and Rings columns. '-' means no outliers of that kind were identified.

Mol	Type	Chain	Res	Link	Chirals	Torsions	Rings
2	KA5	A	609	-	-	2/9/9/9	0/3/3/3
4	UMP	A	611	-	-	0/10/22/22	0/2/2/2
3	NDP	A	610	-	-	3/34/77/77	0/5/5/5
4	UMP	B	611	-	-	1/10/22/22	0/2/2/2
2	KA5	B	609	-	-	4/9/9/9	0/3/3/3
3	NDP	B	610	-	-	3/34/77/77	0/5/5/5

The worst 5 of 43 bond length outliers are listed below:

Mol	Chain	Res	Type	Atoms	Z	Observed(Å)	Ideal(Å)
2	B	609	KA5	C6-N1	-5.06	1.29	1.37
2	A	609	KA5	C6-N1	-4.75	1.30	1.37
3	B	610	NDP	C4N-C3N	-4.55	1.41	1.50
4	A	611	UMP	O4'-C1'	4.35	1.52	1.42
4	B	611	UMP	O4'-C1'	4.32	1.52	1.42

The worst 5 of 61 bond angle outliers are listed below:

Mol	Chain	Res	Type	Atoms	Z	Observed(°)	Ideal(°)
4	A	611	UMP	O4'-C1'-N1	5.69	117.96	107.86
4	B	611	UMP	O4'-C1'-N1	5.37	117.39	107.86
2	A	609	KA5	O22-C21-C16	5.01	123.42	115.96
2	A	609	KA5	N1-C2-N3	-4.98	120.87	127.21
2	B	609	KA5	N1-C2-N3	-4.91	120.97	127.21

There are no chirality outliers.

5 of 13 torsion outliers are listed below:

Mol	Chain	Res	Type	Atoms
2	B	609	KA5	C8-C9-N14-C15
2	A	609	KA5	C16-C21-O22-C23
2	B	609	KA5	C10-C9-N14-C15
2	B	609	KA5	C20-C21-O22-C23
2	A	609	KA5	C20-C21-O22-C23

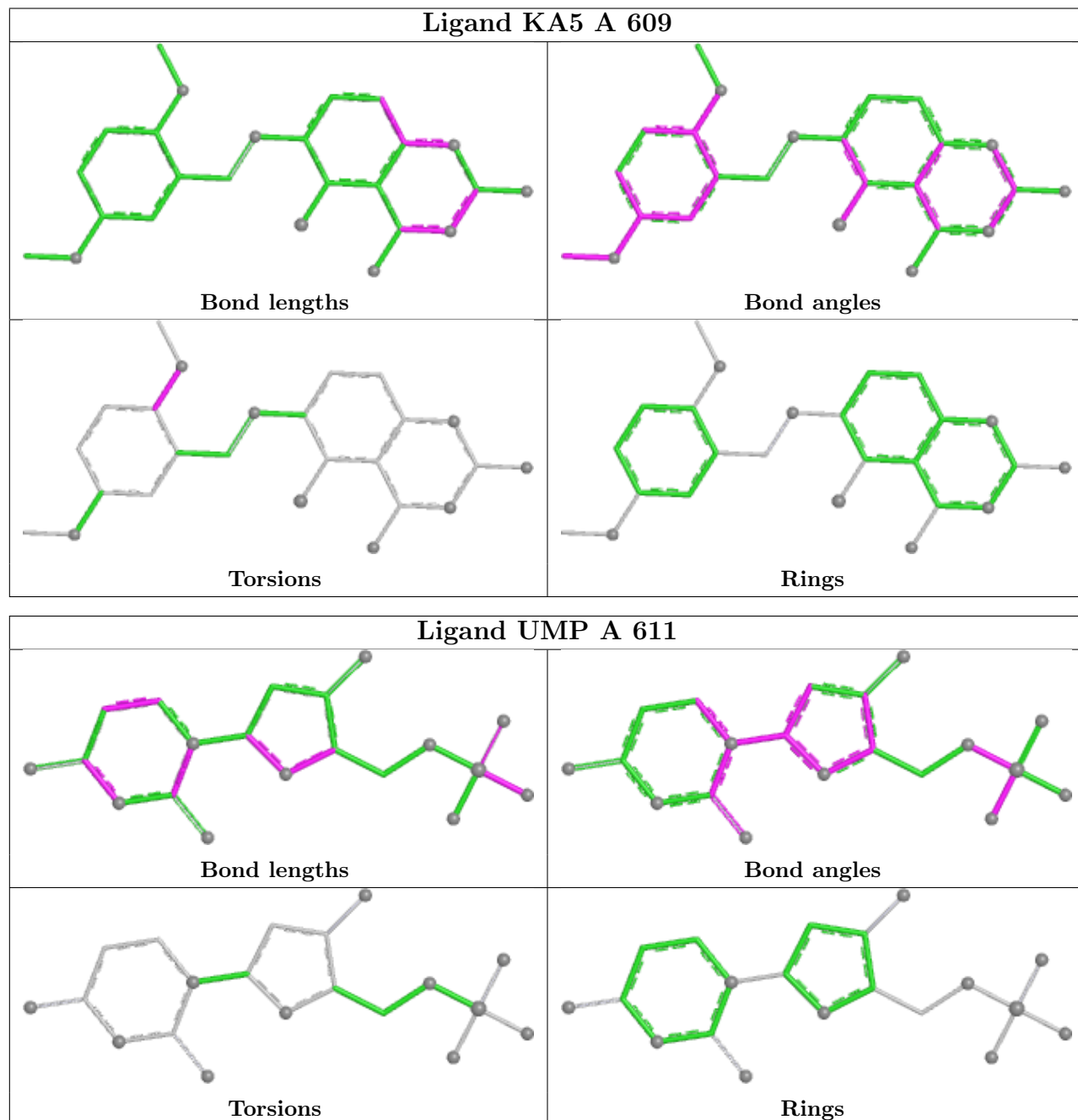
There are no ring outliers.

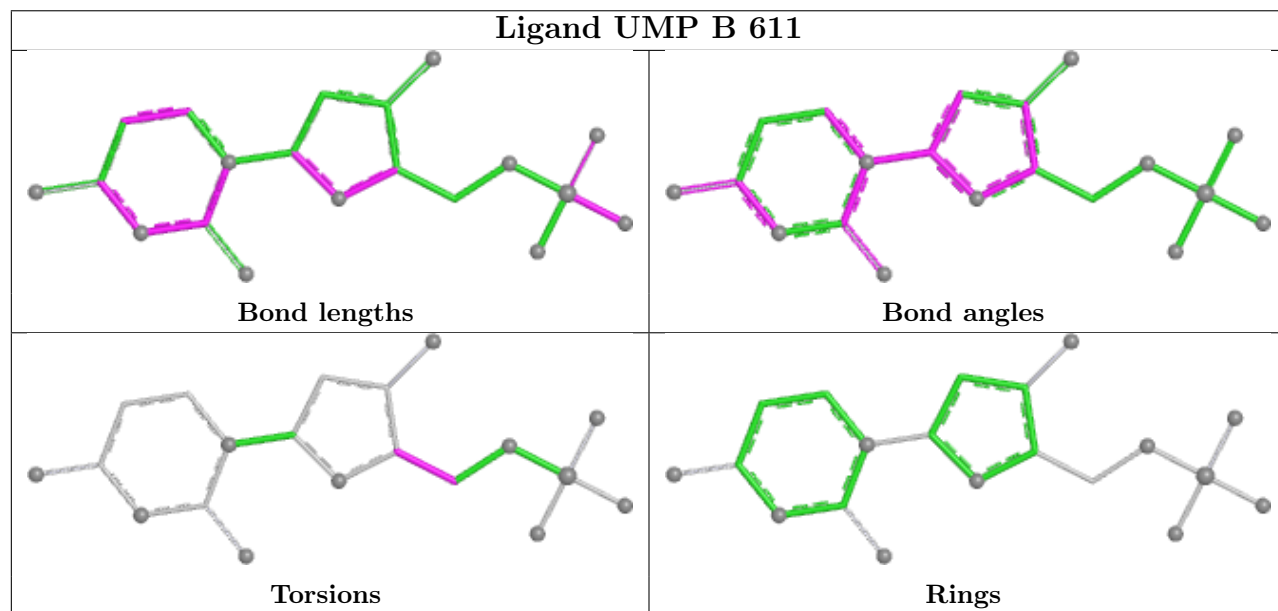
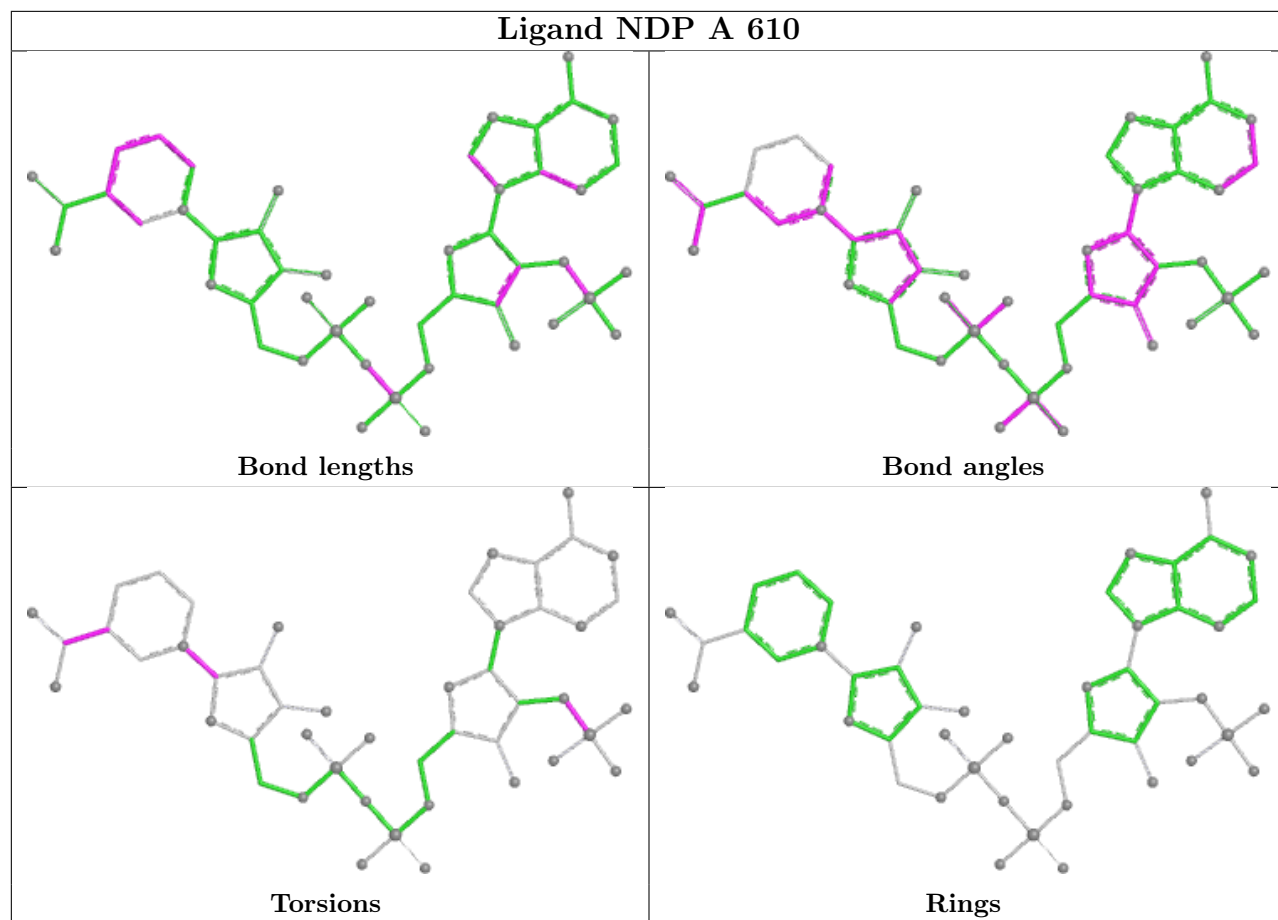
5 monomers are involved in 9 short contacts:

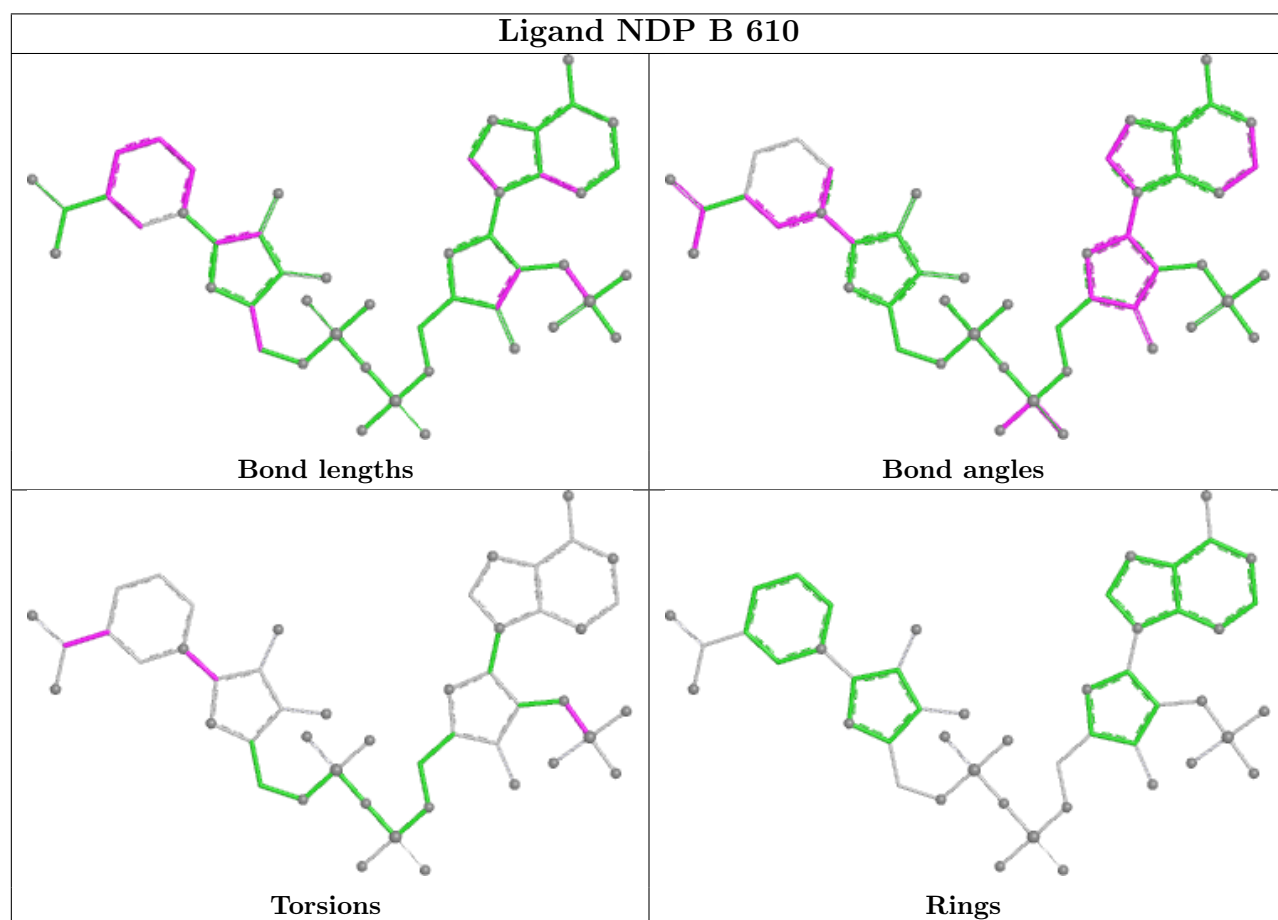
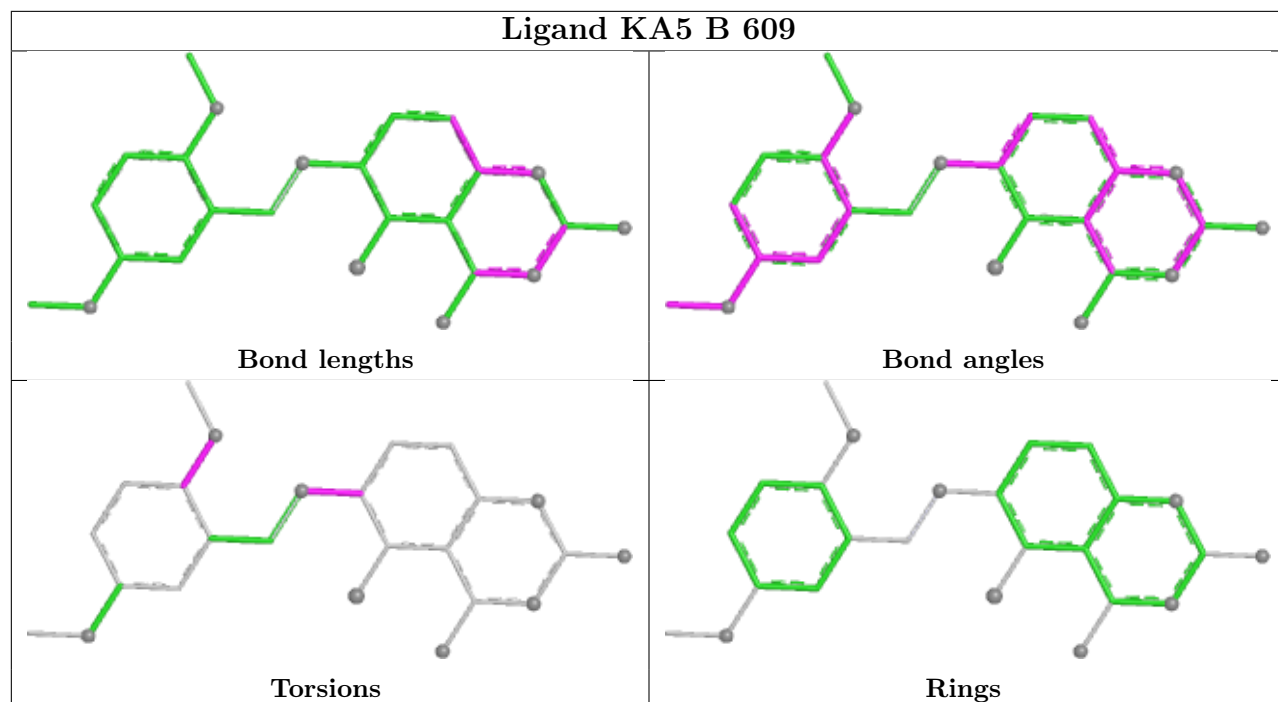
Mol	Chain	Res	Type	Clashes	Symm-Clashes
2	A	609	KA5	1	0
3	A	610	NDP	2	0
4	B	611	UMP	1	0
2	B	609	KA5	1	0
3	B	610	NDP	4	0

The following is a two-dimensional graphical depiction of Mogul quality analysis of bond lengths, bond angles, torsion angles, and ring geometry for all instances of the Ligand of Interest. In addition, ligands with molecular weight > 250 and outliers as shown on the validation Tables will also be included. For torsion angles, if less than 5% of the Mogul distribution of torsion angles is within 10 degrees of the torsion angle in question, then that torsion angle is considered an outlier. Any bond that is central to one or more torsion angles identified as an outlier by Mogul will be

highlighted in the graph. For rings, the root-mean-square deviation (RMSD) between the ring in question and similar rings identified by Mogul is calculated over all ring torsion angles. If the average RMSD is greater than 60 degrees and the minimal RMSD between the ring in question and any Mogul-identified rings is also greater than 60 degrees, then that ring is considered an outlier. The outliers are highlighted in purple. The color gray indicates Mogul did not find sufficient equivalents in the CSD to analyse the geometry.







## 5.7 Other polymers [i](#)

There are no such residues in this entry.

## 5.8 Polymer linkage issues [i](#)

There are no chain breaks in this entry.

## 6 Fit of model and data [i](#)

### 6.1 Protein, DNA and RNA chains [i](#)

In the following table, the column labelled ‘#RSRZ > 2’ contains the number (and percentage) of RSRZ outliers, followed by percent RSRZ outliers for the chain as percentile scores relative to all X-ray entries and entries of similar resolution. The OWAB column contains the minimum, median, 95<sup>th</sup> percentile and maximum values of the occupancy-weighted average B-factor per residue. The column labelled ‘Q < 0.9’ lists the number of (and percentage) of residues with an average occupancy less than 0.9.

Mol	Chain	Analysed	<RSRZ>	#RSRZ>2	OWAB(Å <sup>2</sup> )	Q<0.9
1	A	545/608 (89%)	-0.12	24 (4%) 39 35	22, 40, 89, 91	0
1	B	542/608 (89%)	0.15	35 (6%) 25 22	22, 44, 90, 91	0
All	All	1087/1216 (89%)	0.02	59 (5%) 31 27	22, 41, 90, 91	0

The worst 5 of 59 RSRZ outliers are listed below:

Mol	Chain	Res	Type	RSRZ
1	A	307	ILE	4.6
1	B	81	LEU	4.2
1	B	165	GLY	4.1
1	A	605	ASP	4.1
1	B	25	GLU	4.0

### 6.2 Non-standard residues in protein, DNA, RNA chains [i](#)

There are no non-standard protein/DNA/RNA residues in this entry.

### 6.3 Carbohydrates [i](#)

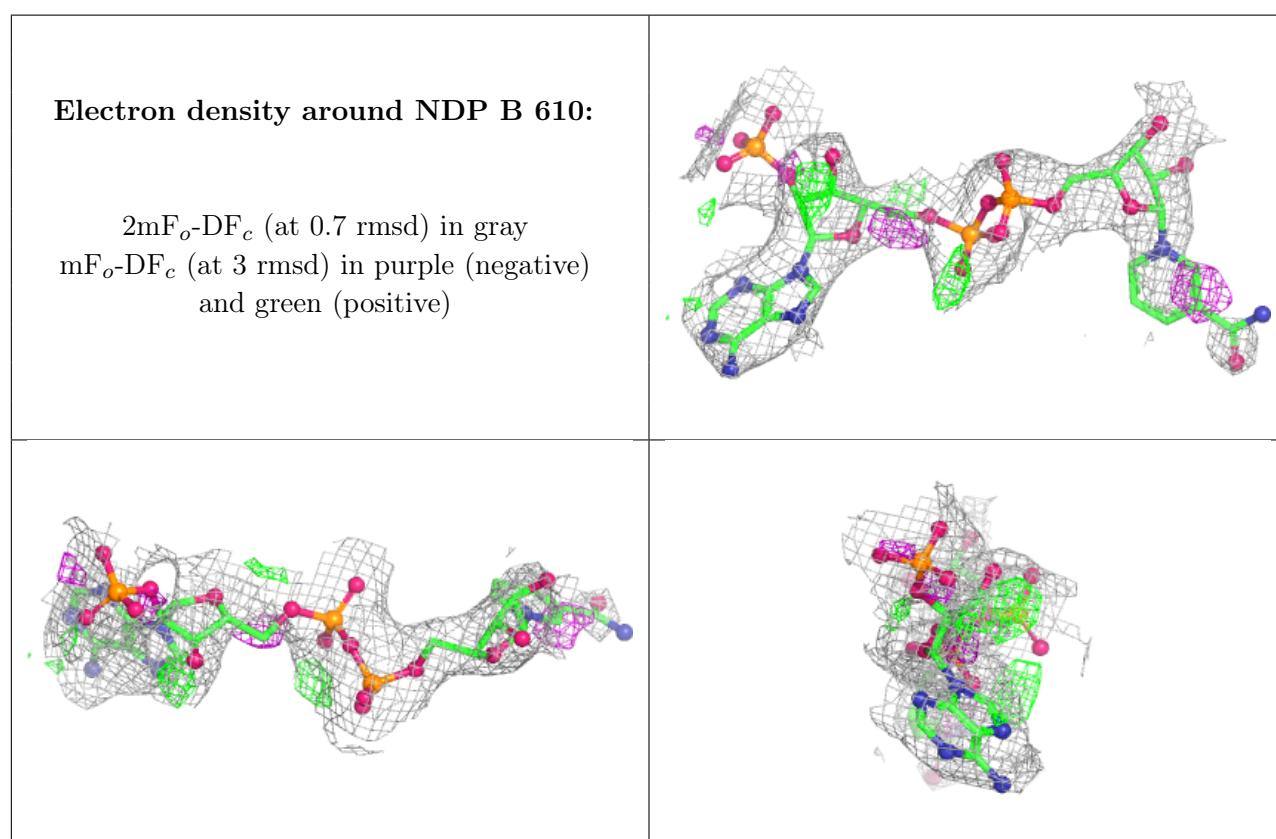
There are no oligosaccharides in this entry.

### 6.4 Ligands [i](#)

In the following table, the Atoms column lists the number of modelled atoms in the group and the number defined in the chemical component dictionary. The B-factors column lists the minimum, median, 95<sup>th</sup> percentile and maximum values of B factors of atoms in the group. The column labelled ‘Q < 0.9’ lists the number of atoms with occupancy less than 0.9.

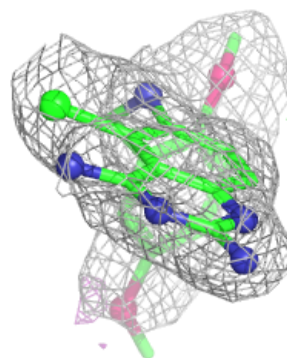
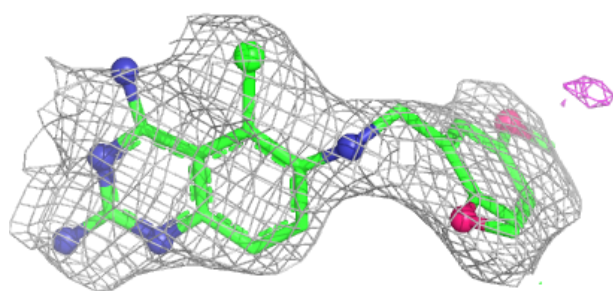
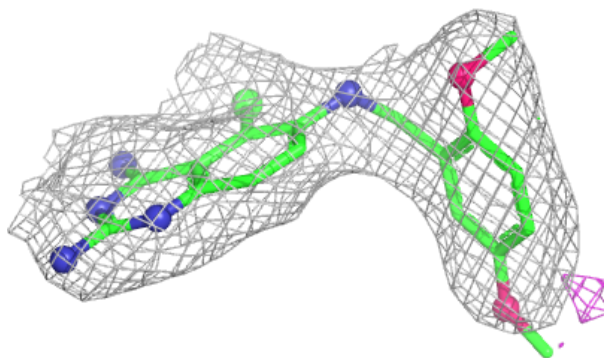
Mol	Type	Chain	Res	Atoms	RSCC	RSR	B-factors( $\text{\AA}^2$ )	Q<0.9
3	NDP	B	610	48/48	0.81	0.14	88,90,90,90	0
2	KA5	B	609	25/25	0.85	0.17	67,74,77,79	0
4	UMP	B	611	20/20	0.92	0.14	44,63,71,72	0
4	UMP	A	611	20/20	0.93	0.14	49,72,80,82	0
2	KA5	A	609	25/25	0.93	0.10	39,44,49,55	0
3	NDP	A	610	48/48	0.95	0.09	51,60,63,63	0

The following is a graphical depiction of the model fit to experimental electron density of all instances of the Ligand of Interest. In addition, ligands with molecular weight > 250 and outliers as shown on the geometry validation Tables will also be included. Each fit is shown from different orientation to approximate a three-dimensional view.

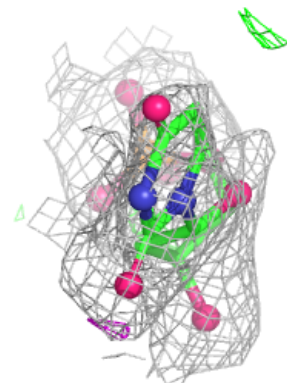
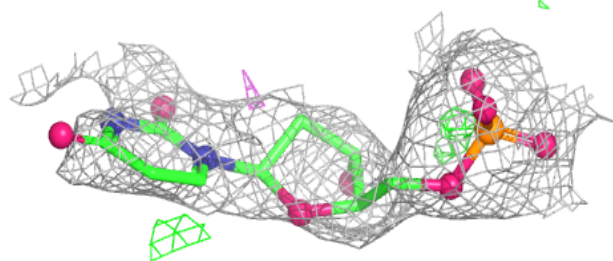
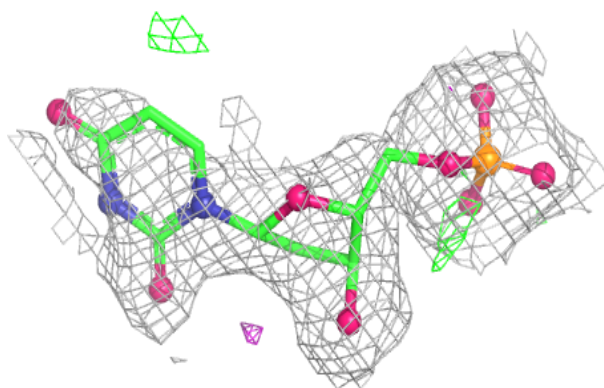


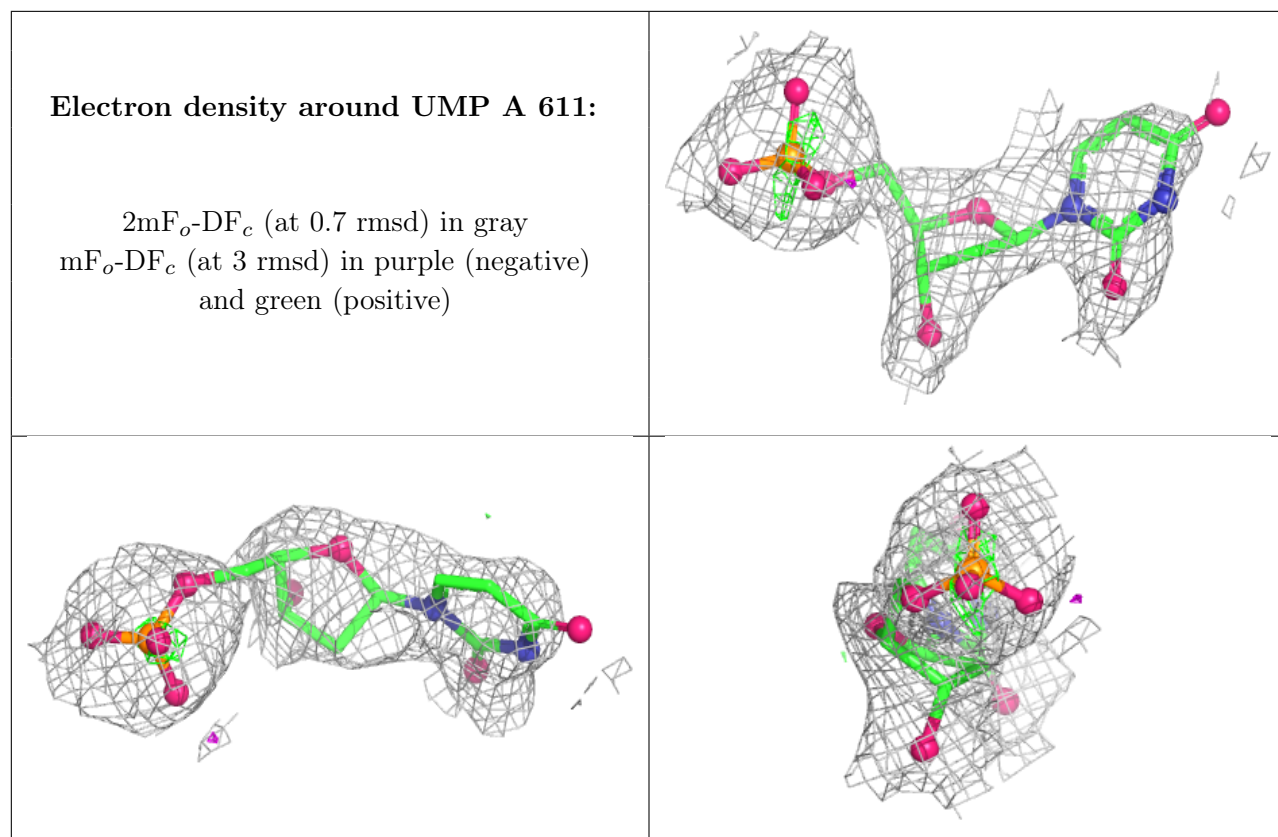
**Electron density around KA5 B 609:**

$2mF_o-DF_c$  (at 0.7 rmsd) in gray  
 $mF_o-DF_c$  (at 3 rmsd) in purple (negative)  
and green (positive)

**Electron density around UMP B 611:**

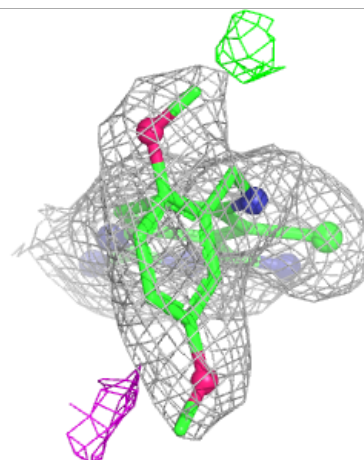
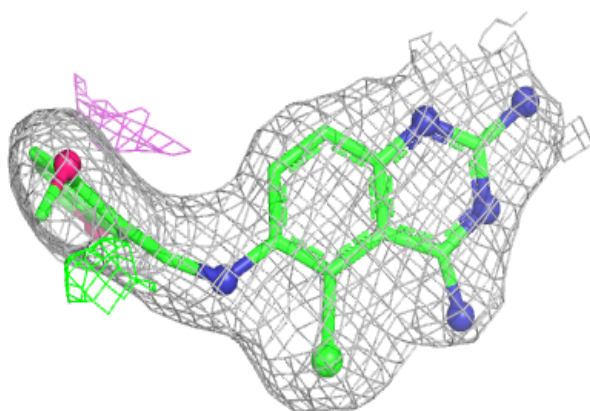
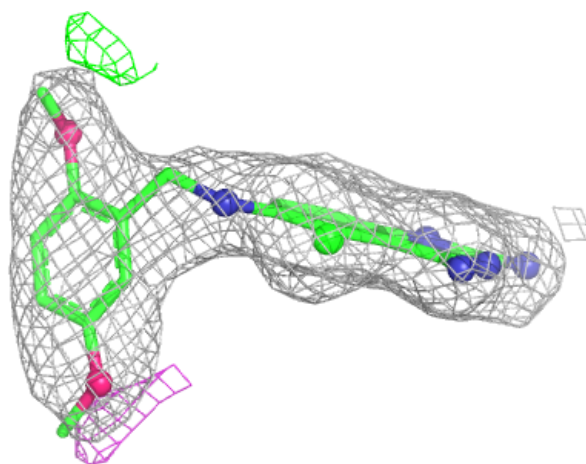
$2mF_o-DF_c$  (at 0.7 rmsd) in gray  
 $mF_o-DF_c$  (at 3 rmsd) in purple (negative)  
and green (positive)

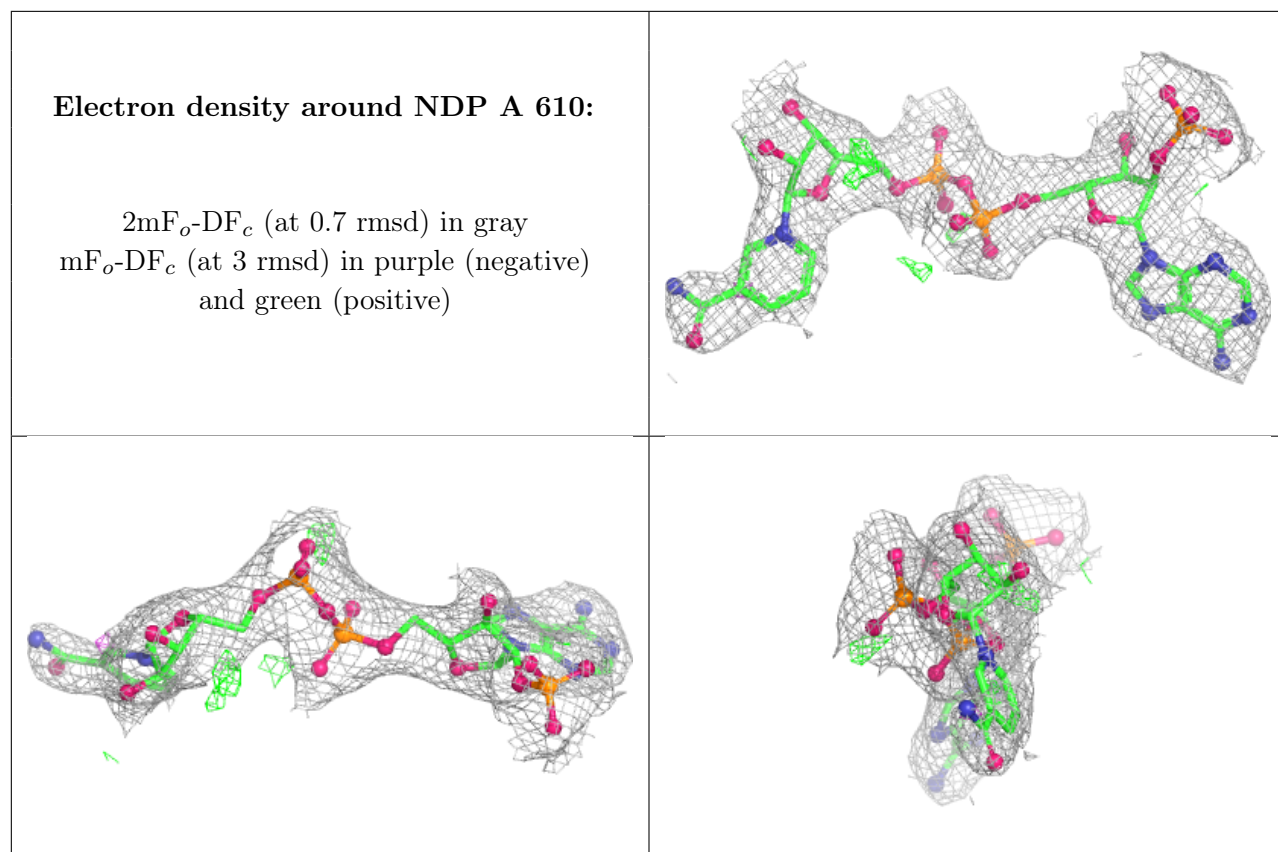




**Electron density around KA5 A 609:**

$2mF_o-DF_c$  (at 0.7 rmsd) in gray  
 $mF_o-DF_c$  (at 3 rmsd) in purple (negative)  
and green (positive)





## 6.5 Other polymers [i](#)

There are no such residues in this entry.