



# wwPDB X-ray Structure Validation Summary Report ⓘ

Mar 10, 2026 – 04:02 AM UTC

PDB ID : 5JSR / pdb\_00005jsr  
Title : New Mechanistic Insight from Substrate and Product Bound Structures of the Metal-dependent Dimethylsulfoniopropionate Lyase DddQ  
Authors : Brummett, A.E.; Dey, M.  
Deposited on : 2016-05-09  
Resolution : 2.50 Å (reported)

This is a wwPDB X-ray Structure Validation Summary Report for a publicly released PDB entry.

We welcome your comments at [validation@mail.wwpdb.org](mailto:validation@mail.wwpdb.org)

A user guide is available at

<https://www.wwpdb.org/validation/2017/XrayValidationReportHelp>

with specific help available everywhere you see the ⓘ symbol.

The types of validation reports are described at

<http://www.wwpdb.org/validation/2017/FAQs#types>.

---

The following versions of software and data (see [references ⓘ](#)) were used in the production of this report:

MolProbity : 4-5-2 with Phenix2.0  
Mogul : 2022.3.0, CSD as543be (2022)  
Xtriage (Phenix) : 2.0  
EDS : 3.0  
Percentile statistics : 20250101.v01 (using entries in the PDB archive January 1st 2025)  
CCP4 : 9.0.010 (Gargrove)  
Density-Fitness : 1.0.12  
Ideal geometry (proteins) : Engh & Huber (2001)  
Ideal geometry (DNA, RNA) : Parkinson et al. (1996)  
Validation Pipeline (wwPDB-VP) : 2.49

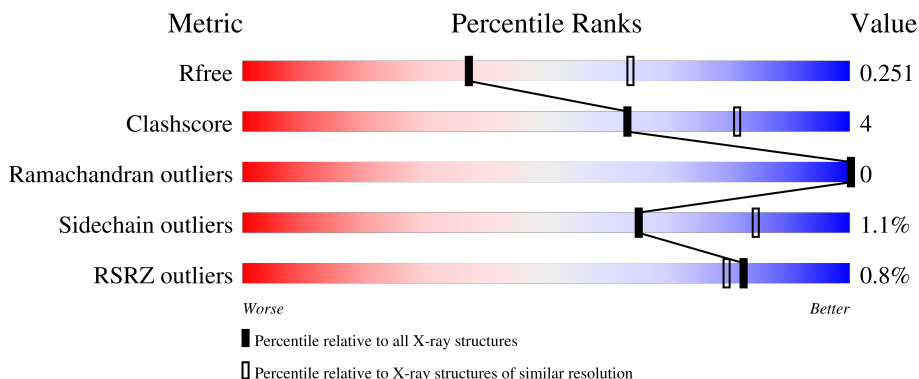
# 1 Overall quality at a glance

The following experimental techniques were used to determine the structure:

*X-RAY DIFFRACTION*



The reported resolution of this entry is 2.50 Å.

Percentile scores (ranging between 0-100) for global validation metrics of the entry are shown in the following graphic. The table shows the number of entries on which the scores are based.



Metric	Whole archive (#Entries)	Similar resolution (#Entries, resolution range(Å))
$R_{free}$	180053	5829 (2.50-2.50)
Clashscore	190562	6492 (2.50-2.50)
Ramachandran outliers	187476	6378 (2.50-2.50)
Sidechain outliers	187428	6380 (2.50-2.50)
RSRZ outliers	180081	5833 (2.50-2.50)

The table below summarises the geometric issues observed across the polymeric chains and their fit to the electron density. The red, orange, yellow and green segments of the lower bar indicate the fraction of residues that contain outliers for  $\geq 3$ , 2, 1 and 0 types of geometric quality criteria respectively. A grey segment represents the fraction of residues that are not modelled. The numeric value for each fraction is indicated below the corresponding segment, with a dot representing fractions  $\leq 5\%$ . The upper red bar (where present) indicates the fraction of residues that have poor fit to the electron density. The numeric value is given above the bar.

Mol	Chain	Length	Quality of chain
1	A	201	 84% 10% 5%
1	B	201	 85% 9% 5%

The following table lists non-polymeric compounds, carbohydrate monomers and non-standard residues in protein, DNA, RNA chains that are outliers for geometric or electron-density-fit criteria:

Mol	Type	Chain	Res	Chirality	Geometry	Clashes	Electron density
3	AKR	A	302	-	X	-	-

## 2 Entry composition i

There are 6 unique types of molecules in this entry. The entry contains 3124 atoms, of which 0 are hydrogens and 0 are deuteriums.

In the tables below, the ZeroOcc column contains the number of atoms modelled with zero occupancy, the AltConf column contains the number of residues with at least one atom in alternate conformation and the Trace column contains the number of residues modelled with at most 2 atoms.

- Molecule 1 is a protein called Dimethylsulfoniopropionate lyase DddQ.

Mol	Chain	Residues	Atoms					ZeroOcc	AltConf	Trace
			Total	C	N	O	S			
1	A	190	1464	936	260	265	3	0	0	0
1	B	190	1462	933	261	265	3	0	0	0

There are 18 discrepancies between the modelled and reference sequences:

Chain	Residue	Modelled	Actual	Comment	Reference
A	0	MET	-	initiating methionine	UNP D0CY60
A	193	LEU	-	expression tag	UNP D0CY60
A	194	GLU	-	expression tag	UNP D0CY60
A	195	HIS	-	expression tag	UNP D0CY60
A	196	HIS	-	expression tag	UNP D0CY60
A	197	HIS	-	expression tag	UNP D0CY60
A	198	HIS	-	expression tag	UNP D0CY60
A	199	HIS	-	expression tag	UNP D0CY60
A	200	HIS	-	expression tag	UNP D0CY60
B	0	MET	-	initiating methionine	UNP D0CY60
B	193	LEU	-	expression tag	UNP D0CY60
B	194	GLU	-	expression tag	UNP D0CY60
B	195	HIS	-	expression tag	UNP D0CY60
B	196	HIS	-	expression tag	UNP D0CY60
B	197	HIS	-	expression tag	UNP D0CY60
B	198	HIS	-	expression tag	UNP D0CY60
B	199	HIS	-	expression tag	UNP D0CY60
B	200	HIS	-	expression tag	UNP D0CY60

- Molecule 2 is FE (III) ION (CCD ID: FE) (formula: Fe).

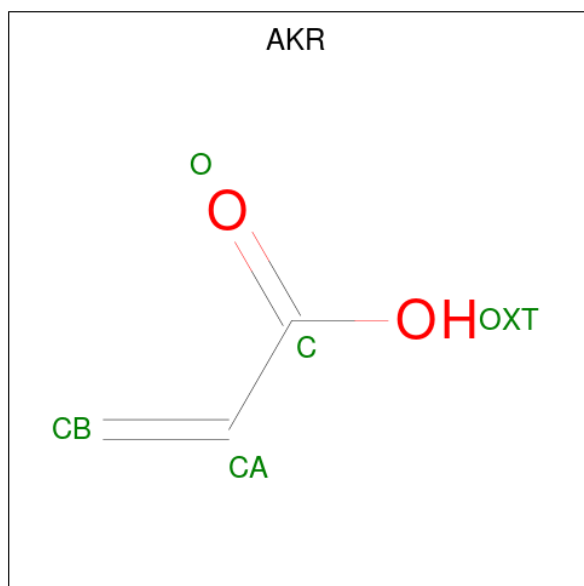
Mol	Chain	Residues	Atoms		ZeroOcc	AltConf
2	A	1	Total	Fe	0	0
			1	1		

*Continued on next page...*

Continued from previous page...

Mol	Chain	Residues	Atoms		ZeroOcc	AltConf
2	B	1	Total	Fe	0	0
			1	1		

- Molecule 3 is ACRYLIC ACID (CCD ID: AKR) (formula: C<sub>3</sub>H<sub>4</sub>O<sub>2</sub>).



Mol	Chain	Residues	Atoms			ZeroOcc	AltConf
3	A	1	Total	C	O	0	0
			5	3	2		
3	B	1	Total	C	O	0	0
			5	3	2		

- Molecule 4 is BROMIDE ION (CCD ID: BR) (formula: Br).

Mol	Chain	Residues	Atoms		ZeroOcc	AltConf
4	A	1	Total	Br	0	0
			1	1		
4	B	1	Total	Br	0	0
			1	1		

- Molecule 5 is CHLORIDE ION (CCD ID: CL) (formula: Cl).

Mol	Chain	Residues	Atoms		ZeroOcc	AltConf
5	A	3	Total	Cl	0	0
			3	3		
5	B	2	Total	Cl	0	0
			2	2		


- Molecule 6 is water.

<b>Mol</b>	<b>Chain</b>	<b>Residues</b>	<b>Atoms</b>		<b>ZeroOcc</b>	<b>AltConf</b>
6	A	85	Total 85	O 85	0	0
6	B	94	Total 94	O 94	0	0

### 3 Residue-property plots [i](#)


These plots are drawn for all protein, RNA, DNA and oligosaccharide chains in the entry. The first graphic for a chain summarises the proportions of the various outlier classes displayed in the second graphic. The second graphic shows the sequence view annotated by issues in geometry and electron density. Residues are color-coded according to the number of geometric quality criteria for which they contain at least one outlier: green = 0, yellow = 1, orange = 2 and red = 3 or more. A red dot above a residue indicates a poor fit to the electron density ( $RSRZ > 2$ ). Stretches of 2 or more consecutive residues without any outlier are shown as a green connector. Residues present in the sample, but not in the model, are shown in grey.

- Molecule 1: Dimethylsuloniopropionate lyase DddQ

Chain A:  84% 10% 5%



- Molecule 1: Dimethylsuloniopropionate lyase DddQ

Chain B:  85% 9% 5%



## 4 Data and refinement statistics

Property	Value	Source
Space group	P 21 21 21	Depositor
Cell constants a, b, c, $\alpha$ , $\beta$ , $\gamma$	48.72Å 88.17Å 93.08Å 90.00° 90.00° 90.00°	Depositor
Resolution (Å)	33.66 – 2.50 33.66 – 2.50	Depositor EDS
% Data completeness (in resolution range)	99.7 (33.66-2.50) 99.9 (33.66-2.50)	Depositor EDS
$R_{merge}$	(Not available)	Depositor
$R_{sym}$	0.10	Depositor
$\langle I/\sigma(I) \rangle$ <sup>1</sup>	5.82 (at 2.51Å)	Xtrriage
Refinement program	PHENIX 1.10_2155	Depositor
R, $R_{free}$	0.211 , 0.247 0.211 , 0.251	Depositor DCC
$R_{free}$ test set	692 reflections (4.79%)	wwPDB-VP
Wilson B-factor (Å <sup>2</sup> )	19.2	Xtrriage
Anisotropy	0.616	Xtrriage
Bulk solvent $k_{sol}$ (e/Å <sup>3</sup> ), $B_{sol}$ (Å <sup>2</sup> )	0.38 , 45.7	EDS
L-test for twinning <sup>2</sup>	$\langle  L  \rangle = 0.51$ , $\langle L^2 \rangle = 0.34$	Xtrriage
Estimated twinning fraction	No twinning to report.	Xtrriage
$F_o, F_c$ correlation	0.94	EDS
Total number of atoms	3124	wwPDB-VP
Average B, all atoms (Å <sup>2</sup> )	19.0	wwPDB-VP

Xtrriage's analysis on translational NCS is as follows: *The analyses of the Patterson function reveals a significant off-origin peak that is 53.20 % of the origin peak, indicating pseudo-translational symmetry. The chance of finding a peak of this or larger height randomly in a structure without pseudo-translational symmetry is equal to 4.3620e-05. The detected translational NCS is most likely also responsible for the elevated intensity ratio.*

<sup>1</sup>Intensities estimated from amplitudes.

<sup>2</sup>Theoretical values of  $\langle |L| \rangle$ ,  $\langle L^2 \rangle$  for acentric reflections are 0.5, 0.333 respectively for untwinned datasets, and 0.375, 0.2 for perfectly twinned datasets.

## 5 Model quality

### 5.1 Standard geometry

Bond lengths and bond angles in the following residue types are not validated in this section: FE, AKR, CL, BR

The Z score for a bond length (or angle) is the number of standard deviations the observed value is removed from the expected value. A bond length (or angle) with  $|Z| > 5$  is considered an outlier worth inspection. RMSZ is the root-mean-square of all Z scores of the bond lengths (or angles).

Mol	Chain	Bond lengths		Bond angles	
		RMSZ	# Z  >5	RMSZ	# Z  >5
1	A	0.25	0/1510	0.35	0/2061
1	B	0.20	0/1508	0.35	0/2057
All	All	0.23	0/3018	0.35	0/4118

There are no bond length outliers.

There are no bond angle outliers.

There are no chirality outliers.

There are no planarity outliers.

### 5.2 Too-close contacts

In the following table, the Non-H and H(model) columns list the number of non-hydrogen atoms and hydrogen atoms in the chain respectively. The H(added) column lists the number of hydrogen atoms added and optimized by MolProbity. The Clashes column lists the number of clashes within the asymmetric unit, whereas Symm-Clashes lists symmetry-related clashes.

Mol	Chain	Non-H	H(model)	H(added)	Clashes	Symm-Clashes
1	A	1464	0	1372	12	0
1	B	1462	0	1369	10	0
2	A	1	0	0	0	0
2	B	1	0	0	0	0
3	A	5	0	3	0	0
3	B	5	0	3	1	0
4	A	1	0	0	0	0
4	B	1	0	0	0	0
5	A	3	0	0	1	0
5	B	2	0	0	1	0
6	A	85	0	0	0	0

*Continued on next page...*

Continued from previous page...

Mol	Chain	Non-H	H(model)	H(added)	Clashes	Symm-Clashes
6	B	94	0	0	1	0
All	All	3124	0	2747	23	0

The all-atom clashscore is defined as the number of clashes found per 1000 atoms (including hydrogen atoms). The all-atom clashscore for this structure is 4.

The worst 5 of 23 close contacts within the same asymmetric unit are listed below, sorted by their clash magnitude.

Atom-1	Atom-2	Interatomic distance (Å)	Clash overlap (Å)
1:B:151:ALA:O	1:B:152:GLU:HB2	2.06	0.55
1:B:78:THR:OG1	1:B:81:GLU:HG3	2.05	0.55
5:B:305:CL:CL	6:B:428:HOH:O	2.56	0.52
1:B:108:ARG:HB3	1:B:178:TRP:HB2	1.93	0.50
1:B:20:LEU:HD11	1:B:132:LEU:HD22	1.96	0.47

There are no symmetry-related clashes.

## 5.3 Torsion angles [i](#)

### 5.3.1 Protein backbone [i](#)

In the following table, the Percentiles column shows the percent Ramachandran outliers of the chain as a percentile score with respect to all X-ray entries followed by that with respect to entries of similar resolution.

The Analysed column shows the number of residues for which the backbone conformation was analysed, and the total number of residues.

Mol	Chain	Analysed	Favoured	Allowed	Outliers	Percentiles	
1	A	188/201 (94%)	181 (96%)	7 (4%)	0	100	100
1	B	188/201 (94%)	183 (97%)	5 (3%)	0	100	100
All	All	376/402 (94%)	364 (97%)	12 (3%)	0	100	100

There are no Ramachandran outliers to report.

### 5.3.2 Protein sidechains [i](#)

In the following table, the Percentiles column shows the percent sidechain outliers of the chain as a percentile score with respect to all X-ray entries followed by that with respect to entries of similar

resolution.

The Analysed column shows the number of residues for which the sidechain conformation was analysed, and the total number of residues.

Mol	Chain	Analysed	Rotameric	Outliers	Percentiles	
1	A	140/157 (89%)	140 (100%)	0	100	100
1	B	139/157 (88%)	136 (98%)	3 (2%)	45	73
All	All	279/314 (89%)	276 (99%)	3 (1%)	65	84

All (3) residues with a non-rotameric sidechain are listed below:

Mol	Chain	Res	Type
1	B	66	SER
1	B	74	LYS
1	B	90	TYR

Sometimes sidechains can be flipped to improve hydrogen bonding and reduce clashes. All (2) such sidechains are listed below:

Mol	Chain	Res	Type
1	A	12	HIS
1	A	36	GLN

### 5.3.3 RNA [i](#)

There are no RNA molecules in this entry.

## 5.4 Non-standard residues in protein, DNA, RNA chains [i](#)

There are no non-standard protein/DNA/RNA residues in this entry.

## 5.5 Carbohydrates [i](#)

There are no oligosaccharides in this entry.

## 5.6 Ligand geometry [i](#)

Of 11 ligands modelled in this entry, 9 are monoatomic - leaving 2 for Mogul analysis.

In the following table, the Counts columns list the number of bonds (or angles) for which Mogul statistics could be retrieved, the number of bonds (or angles) that are observed in the model and

the number of bonds (or angles) that are defined in the Chemical Component Dictionary. The Link column lists molecule types, if any, to which the group is linked. The Z score for a bond length (or angle) is the number of standard deviations the observed value is removed from the expected value. A bond length (or angle) with  $|Z| > 2$  is considered an outlier worth inspection. RMSZ is the root-mean-square of all Z scores of the bond lengths (or angles).

Mol	Type	Chain	Res	Link	Bond lengths			Bond angles		
					Counts	RMSZ	# Z  > 2	Counts	RMSZ	# Z  > 2
3	AKR	B	302	2	4,4,4	1.61	1 (25%)	4,4,4	1.45	1 (25%)
3	AKR	A	302	2	4,4,4	1.63	1 (25%)	4,4,4	1.47	1 (25%)

In the following table, the Chirals column lists the number of chiral outliers, the number of chiral centers analysed, the number of these observed in the model and the number defined in the Chemical Component Dictionary. Similar counts are reported in the Torsion and Rings columns. '-' means no outliers of that kind were identified.

Mol	Type	Chain	Res	Link	Chirals	Torsions	Rings
3	AKR	B	302	2	-	0/2/2/2	-
3	AKR	A	302	2	-	2/2/2/2	-

All (2) bond length outliers are listed below:

Mol	Chain	Res	Type	Atoms	Z	Observed(Å)	Ideal(Å)
3	A	302	AKR	CA-C	2.46	1.53	1.46
3	B	302	AKR	CA-C	2.36	1.53	1.46

All (2) bond angle outliers are listed below:

Mol	Chain	Res	Type	Atoms	Z	Observed(°)	Ideal(°)
3	A	302	AKR	OXT-C-CA	2.31	120.48	114.19
3	B	302	AKR	OXT-C-CA	2.11	119.94	114.19

There are no chirality outliers.

All (2) torsion outliers are listed below:

Mol	Chain	Res	Type	Atoms
3	A	302	AKR	O-C-CA-CB
3	A	302	AKR	OXT-C-CA-CB

There are no ring outliers.

1 monomer is involved in 1 short contact:

Mol	Chain	Res	Type	Clashes	Symm-Clashes
3	B	302	AKR	1	0

## 5.7 Other polymers [i](#)

There are no such residues in this entry.

## 5.8 Polymer linkage issues [i](#)

There are no chain breaks in this entry.

## 6 Fit of model and data [i](#)

### 6.1 Protein, DNA and RNA chains [i](#)

In the following table, the column labelled '#RSRZ > 2' contains the number (and percentage) of RSRZ outliers, followed by percent RSRZ outliers for the chain as percentile scores relative to all X-ray entries and entries of similar resolution. The OWAB column contains the minimum, median, 95<sup>th</sup> percentile and maximum values of the occupancy-weighted average B-factor per residue. The column labelled 'Q < 0.9' lists the number of (and percentage) of residues with an average occupancy less than 0.9.

Mol	Chain	Analysed	<RSRZ>	#RSRZ>2	OWAB(Å <sup>2</sup> )	Q<0.9
1	A	190/201 (94%)	0.05	2 (1%) 78 75	11, 18, 29, 40	0
1	B	190/201 (94%)	0.14	1 (0%) 87 85	11, 19, 29, 40	0
All	All	380/402 (94%)	0.09	3 (0%) 82 80	11, 18, 29, 40	0

All (3) RSRZ outliers are listed below:

Mol	Chain	Res	Type	RSRZ
1	B	131	TYR	2.7
1	A	80	ALA	2.4
1	A	131	TYR	2.3

### 6.2 Non-standard residues in protein, DNA, RNA chains [i](#)

There are no non-standard protein/DNA/RNA residues in this entry.

### 6.3 Carbohydrates [i](#)

There are no oligosaccharides in this entry.

### 6.4 Ligands [i](#)

In the following table, the Atoms column lists the number of modelled atoms in the group and the number defined in the chemical component dictionary. The B-factors column lists the minimum, median, 95<sup>th</sup> percentile and maximum values of B factors of atoms in the group. The column labelled 'Q < 0.9' lists the number of atoms with occupancy less than 0.9.

Mol	Type	Chain	Res	Atoms	RSCC	RSR	B-factors(Å <sup>2</sup> )	Q<0.9
3	AKR	B	302	5/5	0.69	0.19	23,25,27,28	0
3	AKR	A	302	5/5	0.77	0.17	27,30,36,45	0

*Continued on next page...*

*Continued from previous page...*

Mol	Type	Chain	Res	Atoms	RSCC	RSR	B-factors( $\text{\AA}^2$ )	Q<0.9
5	CL	A	305	1/1	0.87	0.10	47,47,47,47	0
5	CL	A	304	1/1	0.89	0.10	36,36,36,36	0
5	CL	B	304	1/1	0.91	0.07	38,38,38,38	0
2	FE	B	301	1/1	0.92	0.07	24,24,24,24	0
5	CL	A	306	1/1	0.94	0.08	18,18,18,18	0
5	CL	B	305	1/1	0.95	0.08	14,14,14,14	0
2	FE	A	301	1/1	0.98	0.02	21,21,21,21	0
4	BR	B	303	1/1	1.00	0.02	24,24,24,24	0
4	BR	A	303	1/1	1.00	0.03	25,25,25,25	0

## 6.5 Other polymers [i](#)

There are no such residues in this entry.