



wwPDB X-ray Structure Validation Summary Report ⓘ

Mar 8, 2026 – 11:05 PM UTC

PDB ID : 6JST / pdb_00006jst
Title : Structure of Geobacillus kaustophilus lactonase, Y99P/D266N double mutant with bound 3-oxo-C8-HSL
Authors : Xue, B.; Yew, W.S.
Deposited on : 2019-04-08
Resolution : 1.73 Å(reported)

This is a wwPDB X-ray Structure Validation Summary Report for a publicly released PDB entry.

We welcome your comments at validation@mail.wwpdb.org

A user guide is available at

<https://www.wwpdb.org/validation/2017/XrayValidationReportHelp>

with specific help available everywhere you see the ⓘ symbol.

The types of validation reports are described at

<http://www.wwpdb.org/validation/2017/FAQs#types>.

The following versions of software and data (see [references ⓘ](#)) were used in the production of this report:

MolProbity : 4-5-2 with Phenix2.0
Mogul : 2022.3.0, CSD as543be (2022)
Xtriage (Phenix) : 2.0
EDS : 3.0
Percentile statistics : 20250101.v01 (using entries in the PDB archive January 1st 2025)
CCP4 : 9.0.010 (Gargrove)
Density-Fitness : 1.0.12
Ideal geometry (proteins) : Engh & Huber (2001)
Ideal geometry (DNA, RNA) : Parkinson et al. (1996)
Validation Pipeline (wwPDB-VP) : 2.49

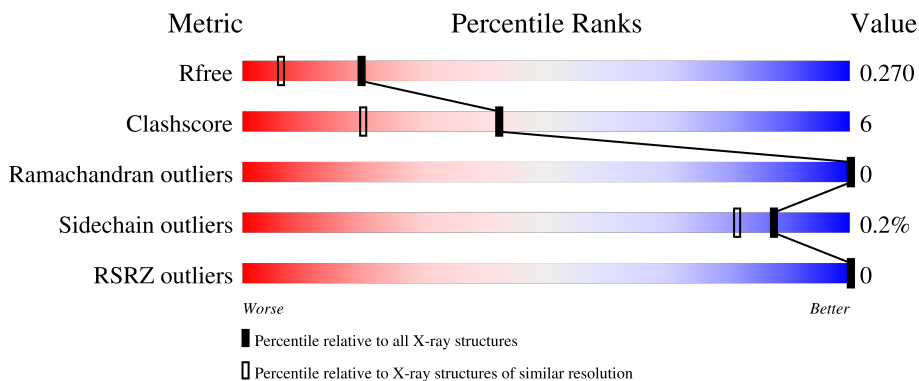
1 Overall quality at a glance

The following experimental techniques were used to determine the structure:

X-RAY DIFFRACTION

The reported resolution of this entry is 1.73 Å.

Percentile scores (ranging between 0-100) for global validation metrics of the entry are shown in the following graphic. The table shows the number of entries on which the scores are based.



Metric	Whole archive (#Entries)	Similar resolution (#Entries, resolution range(Å))
R_{free}	180053	1039 (1.72-1.72)
Clashscore	190562	1049 (1.72-1.72)
Ramachandran outliers	187476	1041 (1.72-1.72)
Sidechain outliers	187428	1041 (1.72-1.72)
RSRZ outliers	180081	1039 (1.72-1.72)

The table below summarises the geometric issues observed across the polymeric chains and their fit to the electron density. The red, orange, yellow and green segments of the lower bar indicate the fraction of residues that contain outliers for ≥ 3 , 2, 1 and 0 types of geometric quality criteria respectively. A grey segment represents the fraction of residues that are not modelled. The numeric value for each fraction is indicated below the corresponding segment, with a dot representing fractions $\leq 5\%$. The upper red bar (where present) indicates the fraction of residues that have poor fit to the electron density. The numeric value is given above the bar.

Mol	Chain	Length	Quality of chain
1	A	330	
1	B	330	
1	C	330	
1	D	330	

2 Entry composition [i](#)

There are 6 unique types of molecules in this entry. The entry contains 10942 atoms, of which 0 are hydrogens and 0 are deuteriums.

In the tables below, the ZeroOcc column contains the number of atoms modelled with zero occupancy, the AltConf column contains the number of residues with at least one atom in alternate conformation and the Trace column contains the number of residues modelled with at most 2 atoms.

- Molecule 1 is a protein called Phosphotriesterase.

Mol	Chain	Residues	Atoms					ZeroOcc	AltConf	Trace
			Total	C	N	O	S			
1	A	323	2538	1613	436	473	16	0	0	0
1	B	323	2538	1613	436	473	16	0	0	0
1	C	323	2538	1613	436	473	16	0	0	0
1	D	323	2538	1613	436	473	16	0	0	0

There are 24 discrepancies between the modelled and reference sequences:

Chain	Residue	Modelled	Actual	Comment	Reference
A	-3	GLY	-	expression tag	UNP Q5KZU5
A	-2	SER	-	expression tag	UNP Q5KZU5
A	-1	HIS	-	expression tag	UNP Q5KZU5
A	0	ASN	-	expression tag	UNP Q5KZU5
A	99	PRO	TYR	engineered mutation	UNP Q5KZU5
A	266	ASN	ASP	engineered mutation	UNP Q5KZU5
B	-3	GLY	-	expression tag	UNP Q5KZU5
B	-2	SER	-	expression tag	UNP Q5KZU5
B	-1	HIS	-	expression tag	UNP Q5KZU5
B	0	ASN	-	expression tag	UNP Q5KZU5
B	99	PRO	TYR	engineered mutation	UNP Q5KZU5
B	266	ASN	ASP	engineered mutation	UNP Q5KZU5
C	-3	GLY	-	expression tag	UNP Q5KZU5
C	-2	SER	-	expression tag	UNP Q5KZU5
C	-1	HIS	-	expression tag	UNP Q5KZU5
C	0	ASN	-	expression tag	UNP Q5KZU5
C	99	PRO	TYR	engineered mutation	UNP Q5KZU5
C	266	ASN	ASP	engineered mutation	UNP Q5KZU5
D	-3	GLY	-	expression tag	UNP Q5KZU5
D	-2	SER	-	expression tag	UNP Q5KZU5
D	-1	HIS	-	expression tag	UNP Q5KZU5

Continued on next page...

Continued from previous page...

Chain	Residue	Modelled	Actual	Comment	Reference
D	0	ASN	-	expression tag	UNP Q5KZU5
D	99	PRO	TYR	engineered mutation	UNP Q5KZU5
D	266	ASN	ASP	engineered mutation	UNP Q5KZU5

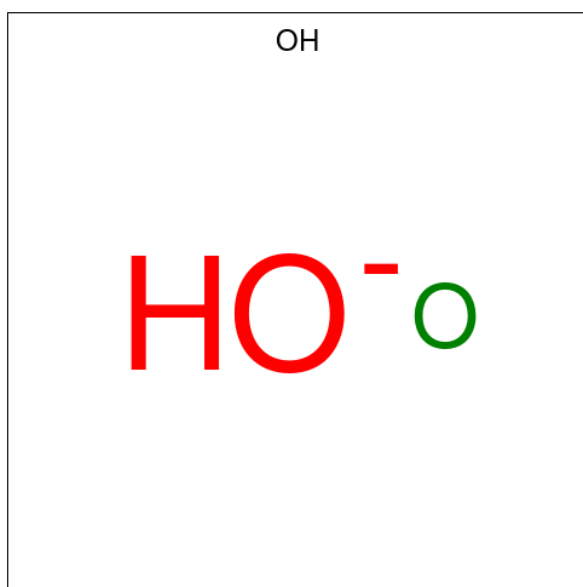
- Molecule 2 is FE (III) ION (CCD ID: FE) (formula: Fe).

Mol	Chain	Residues	Atoms	ZeroOcc	AltConf
2	A	1	Total Fe 1 1	0	0
2	B	1	Total Fe 1 1	0	0
2	C	1	Total Fe 1 1	0	0
2	D	1	Total Fe 1 1	0	0

- Molecule 3 is ZINC ION (CCD ID: ZN) (formula: Zn).

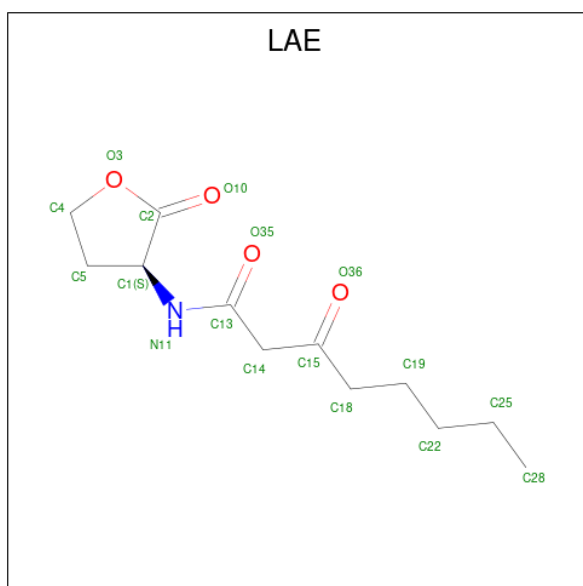
Mol	Chain	Residues	Atoms	ZeroOcc	AltConf
3	A	1	Total Zn 1 1	0	0
3	B	1	Total Zn 1 1	0	0
3	C	1	Total Zn 1 1	0	0
3	D	1	Total Zn 1 1	0	0

- Molecule 4 is HYDROXIDE ION (CCD ID: OH) (formula: HO).



Mol	Chain	Residues	Atoms	ZeroOcc	AltConf
4	A	1	Total O 1 1	0	0
4	B	1	Total O 1 1	0	0
4	C	1	Total O 1 1	0	0

- Molecule 5 is 3-OXO-OCTANOIC ACID (2-OXO-TETRAHYDRO-FURAN-3-YL)-AMIDE (CCD ID: LAE) (formula: C₁₂H₁₉NO₄).



Mol	Chain	Residues	Atoms				ZeroOcc	AltConf
			Total	C	N	O		
5	A	1	17	12	1	4	0	0

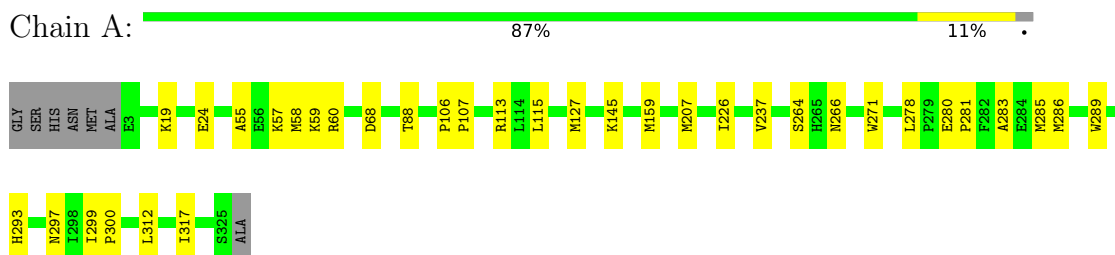
- Molecule 6 is water.

Mol	Chain	Residues	Atoms		ZeroOcc	AltConf
6	A	270	Total 270	O 270	0	0
6	B	252	Total 252	O 252	0	0
6	C	127	Total 127	O 127	0	0
6	D	113	Total 113	O 113	0	0

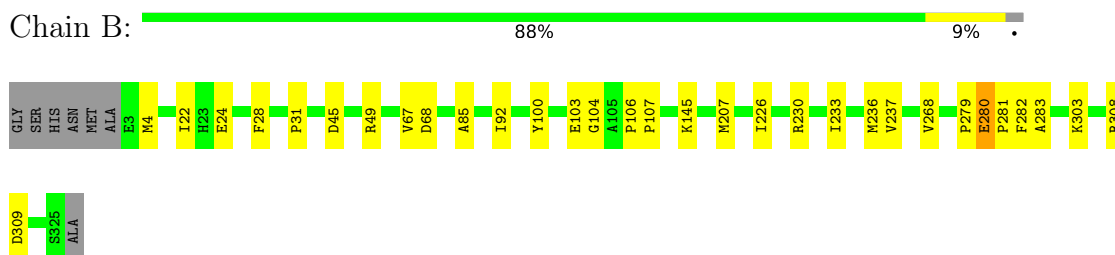
3 Residue-property plots [i](#)

These plots are drawn for all protein, RNA, DNA and oligosaccharide chains in the entry. The first graphic for a chain summarises the proportions of the various outlier classes displayed in the second graphic. The second graphic shows the sequence view annotated by issues in geometry and electron density. Residues are color-coded according to the number of geometric quality criteria for which they contain at least one outlier: green = 0, yellow = 1, orange = 2 and red = 3 or more. A red dot above a residue indicates a poor fit to the electron density ($RSRZ > 2$). Stretches of 2 or more consecutive residues without any outlier are shown as a green connector. Residues present in the sample, but not in the model, are shown in grey.

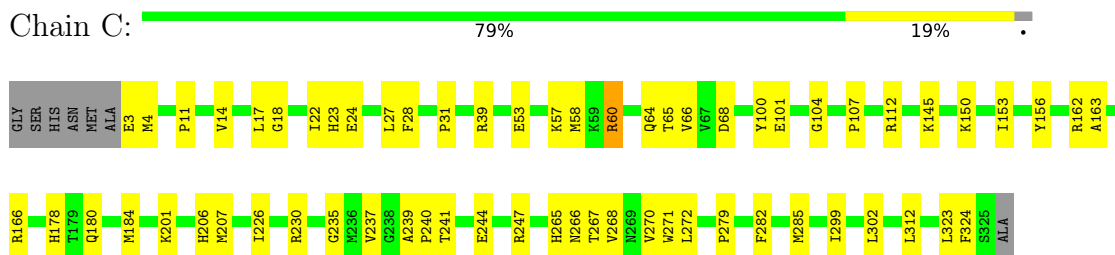
- Molecule 1: Phosphotriesterase



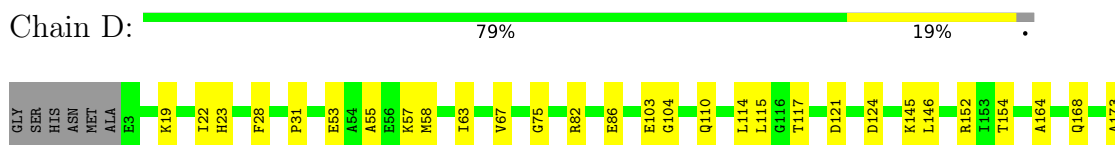
- Molecule 1: Phosphotriesterase

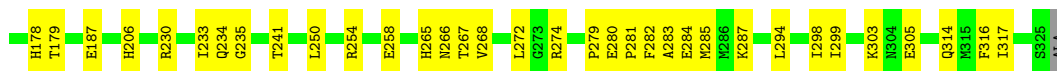


- Molecule 1: Phosphotriesterase



- Molecule 1: Phosphotriesterase





4 Data and refinement statistics i

Property	Value	Source
Space group	P 1	Depositor
Cell constants a, b, c, α , β , γ	50.99Å 51.19Å 134.47Å 90.99° 91.33° 96.33°	Depositor
Resolution (Å)	19.99 – 1.73 19.99 – 1.73	Depositor EDS
% Data completeness (in resolution range)	92.9 (19.99-1.73) 93.4 (19.99-1.73)	Depositor EDS
R_{merge}	0.05	Depositor
R_{sym}	(Not available)	Depositor
$\langle I/\sigma(I) \rangle$ ¹	1.07 (at 1.73Å)	Xtrriage
Refinement program	PHENIX 1.11.1_2575	Depositor
R, R_{free}	0.219 , 0.264 0.227 , 0.270	Depositor DCC
R_{free} test set	6527 reflections (4.60%)	wwPDB-VP
Wilson B-factor (Å ²)	16.1	Xtrriage
Anisotropy	0.749	Xtrriage
Bulk solvent k_{sol} (e/Å ³), B_{sol} (Å ²)	0.34 , 14.2	EDS
L-test for twinning ²	$\langle L \rangle = 0.36$, $\langle L^2 \rangle = 0.18$	Xtrriage
Estimated twinning fraction	0.118 for -h,-k,l 0.118 for k,h,-l 0.390 for -k,-h,-l	Xtrriage
F_o, F_c correlation	0.95	EDS
Total number of atoms	10942	wwPDB-VP
Average B, all atoms (Å ²)	30.0	wwPDB-VP

Xtrriage's analysis on translational NCS is as follows: *The largest off-origin peak in the Patterson function is 4.44% of the height of the origin peak. No significant pseudotranslation is detected.*

¹Intensities estimated from amplitudes.

²Theoretical values of $\langle |L| \rangle$, $\langle L^2 \rangle$ for acentric reflections are 0.5, 0.333 respectively for untwinned datasets, and 0.375, 0.2 for perfectly twinned datasets.

5 Model quality [i](#)

5.1 Standard geometry [i](#)

Bond lengths and bond angles in the following residue types are not validated in this section: ZN, LAE, OH, FE, KCX

The Z score for a bond length (or angle) is the number of standard deviations the observed value is removed from the expected value. A bond length (or angle) with $|Z| > 5$ is considered an outlier worth inspection. RMSZ is the root-mean-square of all Z scores of the bond lengths (or angles).

Mol	Chain	Bond lengths		Bond angles	
		RMSZ	# Z >5	RMSZ	# Z >5
1	A	0.43	0/2584	0.63	0/3497
1	B	0.40	0/2584	0.64	0/3497
1	C	0.22	0/2584	0.46	2/3497 (0.1%)
1	D	0.22	0/2584	0.43	0/3497
All	All	0.33	0/10336	0.55	2/13988 (0.0%)

There are no bond length outliers.

All (2) bond angle outliers are listed below:

Mol	Chain	Res	Type	Atoms	Z	Observed(°)	Ideal(°)
1	C	60	ARG	CA-C-N	-6.28	112.62	122.73
1	C	60	ARG	C-N-CA	-6.28	112.62	122.73

There are no chirality outliers.

There are no planarity outliers.

5.2 Too-close contacts [i](#)

In the following table, the Non-H and H(model) columns list the number of non-hydrogen atoms and hydrogen atoms in the chain respectively. The H(added) column lists the number of hydrogen atoms added and optimized by MolProbity. The Clashes column lists the number of clashes within the asymmetric unit, whereas Symm-Clashes lists symmetry-related clashes.

Mol	Chain	Non-H	H(model)	H(added)	Clashes	Symm-Clashes
1	A	2538	0	2486	24	0
1	B	2538	0	2486	21	0
1	C	2538	0	2486	40	0
1	D	2538	0	2487	46	0
2	A	1	0	0	0	0

Continued on next page...

Continued from previous page...

Mol	Chain	Non-H	H(model)	H(added)	Clashes	Symm-Clashes
2	B	1	0	0	0	0
2	C	1	0	0	0	0
2	D	1	0	0	0	0
3	A	1	0	0	0	0
3	B	1	0	0	0	0
3	C	1	0	0	0	0
3	D	1	0	0	0	0
4	A	1	0	0	0	0
4	B	1	0	0	0	0
4	C	1	0	0	0	0
5	A	17	0	19	5	0
6	A	270	0	0	0	0
6	B	252	0	0	1	0
6	C	127	0	0	0	0
6	D	113	0	0	0	0
All	All	10942	0	9964	126	0

The all-atom clashscore is defined as the number of clashes found per 1000 atoms (including hydrogen atoms). The all-atom clashscore for this structure is 6.

The worst 5 of 126 close contacts within the same asymmetric unit are listed below, sorted by their clash magnitude.

Atom-1	Atom-2	Interatomic distance (Å)	Clash overlap (Å)
1:C:60:ARG:NE	1:C:60:ARG:O	1.98	0.96
1:A:278:LEU:HD11	5:A:404:LAE:H222	1.51	0.92
1:C:244:GLU:HG2	1:C:247:ARG:HH21	1.45	0.82
1:A:280:GLU:HA	1:A:283:ALA:HB3	1.63	0.80
1:C:244:GLU:HG2	1:C:247:ARG:NH2	1.99	0.78

There are no symmetry-related clashes.

5.3 Torsion angles [i](#)

5.3.1 Protein backbone [i](#)

In the following table, the Percentiles column shows the percent Ramachandran outliers of the chain as a percentile score with respect to all X-ray entries followed by that with respect to entries of similar resolution.

The Analysed column shows the number of residues for which the backbone conformation was analysed, and the total number of residues.

Mol	Chain	Analysed	Favoured	Allowed	Outliers	Percentiles	
1	A	320/330 (97%)	312 (98%)	8 (2%)	0	100	100
1	B	320/330 (97%)	313 (98%)	7 (2%)	0	100	100
1	C	320/330 (97%)	309 (97%)	11 (3%)	0	100	100
1	D	320/330 (97%)	309 (97%)	11 (3%)	0	100	100
All	All	1280/1320 (97%)	1243 (97%)	37 (3%)	0	100	100

There are no Ramachandran outliers to report.

5.3.2 Protein sidechains [i](#)

In the following table, the Percentiles column shows the percent sidechain outliers of the chain as a percentile score with respect to all X-ray entries followed by that with respect to entries of similar resolution.

The Analysed column shows the number of residues for which the sidechain conformation was analysed, and the total number of residues.

Mol	Chain	Analysed	Rotameric	Outliers	Percentiles	
1	A	263/267 (98%)	262 (100%)	1 (0%)	84	76
1	B	263/267 (98%)	262 (100%)	1 (0%)	84	76
1	C	263/267 (98%)	263 (100%)	0	100	100
1	D	263/267 (98%)	263 (100%)	0	100	100
All	All	1052/1068 (98%)	1050 (100%)	2 (0%)	87	81

All (2) residues with a non-rotameric sidechain are listed below:

Mol	Chain	Res	Type
1	A	264	SER
1	B	280	GLU

Sometimes sidechains can be flipped to improve hydrogen bonding and reduce clashes. 5 of 8 such sidechains are listed below:

Mol	Chain	Res	Type
1	D	290	HIS
1	D	195	HIS
1	C	297	ASN
1	B	297	ASN
1	D	91	ASN

5.3.3 RNA [i](#)

There are no RNA molecules in this entry.

5.4 Non-standard residues in protein, DNA, RNA chains [i](#)

4 non-standard protein/DNA/RNA residues are modelled in this entry.

In the following table, the Counts columns list the number of bonds (or angles) for which Mogul statistics could be retrieved, the number of bonds (or angles) that are observed in the model and the number of bonds (or angles) that are defined in the Chemical Component Dictionary. The Link column lists molecule types, if any, to which the group is linked. The Z score for a bond length (or angle) is the number of standard deviations the observed value is removed from the expected value. A bond length (or angle) with $|Z| > 2$ is considered an outlier worth inspection. RMSZ is the root-mean-square of all Z scores of the bond lengths (or angles).

Mol	Type	Chain	Res	Link	Bond lengths			Bond angles		
					Counts	RMSZ	# Z > 2	Counts	RMSZ	# Z > 2
1	KCX	C	145	2,1,3	10,11,12	1.01	0	6,12,14	1.35	1 (16%)
1	KCX	D	145	2,1,3	10,11,12	0.95	0	6,12,14	1.29	1 (16%)
1	KCX	B	145	2,1,3	10,11,12	1.39	2 (20%)	6,12,14	1.25	1 (16%)
1	KCX	A	145	2,1,3	10,11,12	1.26	1 (10%)	6,12,14	1.84	1 (16%)

In the following table, the Chirals column lists the number of chiral outliers, the number of chiral centers analysed, the number of these observed in the model and the number defined in the Chemical Component Dictionary. Similar counts are reported in the Torsion and Rings columns. '-' means no outliers of that kind were identified.

Mol	Type	Chain	Res	Link	Chirals	Torsions	Rings
1	KCX	C	145	2,1,3	-	1/9/10/12	-
1	KCX	D	145	2,1,3	-	0/9/10/12	-
1	KCX	B	145	2,1,3	-	0/9/10/12	-
1	KCX	A	145	2,1,3	-	0/9/10/12	-

All (3) bond length outliers are listed below:

Mol	Chain	Res	Type	Atoms	Z	Observed(Å)	Ideal(Å)
1	A	145	KCX	CE-NZ	2.52	1.51	1.46
1	B	145	KCX	OQ1-CX	2.51	1.26	1.21
1	B	145	KCX	CE-NZ	2.41	1.51	1.46

All (4) bond angle outliers are listed below:

Mol	Chain	Res	Type	Atoms	Z	Observed(°)	Ideal(°)
1	A	145	KCX	OQ1-CX-NZ	-4.12	118.66	124.92
1	B	145	KCX	OQ1-CX-NZ	-2.94	120.45	124.92
1	C	145	KCX	OQ1-CX-NZ	-2.94	120.45	124.92
1	D	145	KCX	OQ1-CX-NZ	-2.93	120.46	124.92

There are no chirality outliers.

All (1) torsion outliers are listed below:

Mol	Chain	Res	Type	Atoms
1	C	145	KCX	C-CA-CB-CG

There are no ring outliers.

No monomer is involved in short contacts.

5.5 Carbohydrates [i](#)

There are no oligosaccharides in this entry.

5.6 Ligand geometry [i](#)

Of 12 ligands modelled in this entry, 8 are monoatomic and 3 are modelled with single atom - leaving 1 for Mogul analysis.

In the following table, the Counts columns list the number of bonds (or angles) for which Mogul statistics could be retrieved, the number of bonds (or angles) that are observed in the model and the number of bonds (or angles) that are defined in the Chemical Component Dictionary. The Link column lists molecule types, if any, to which the group is linked. The Z score for a bond length (or angle) is the number of standard deviations the observed value is removed from the expected value. A bond length (or angle) with $|Z| > 2$ is considered an outlier worth inspection. RMSZ is the root-mean-square of all Z scores of the bond lengths (or angles).

Mol	Type	Chain	Res	Link	Bond lengths			Bond angles		
					Counts	RMSZ	# Z > 2	Counts	RMSZ	# Z > 2
5	LAE	A	404	-	17,17,17	1.27	1 (5%)	17,21,21	1.07	2 (11%)

In the following table, the Chirals column lists the number of chiral outliers, the number of chiral centers analysed, the number of these observed in the model and the number defined in the Chemical Component Dictionary. Similar counts are reported in the Torsion and Rings columns. '-' means no outliers of that kind were identified.

Mol	Type	Chain	Res	Link	Chirals	Torsions	Rings
5	LAE	A	404	-	-	7/13/23/23	0/1/1/1

All (1) bond length outliers are listed below:

Mol	Chain	Res	Type	Atoms	Z	Observed(Å)	Ideal(Å)
5	A	404	LAE	O3-C2	4.53	1.44	1.35

All (2) bond angle outliers are listed below:

Mol	Chain	Res	Type	Atoms	Z	Observed(°)	Ideal(°)
5	A	404	LAE	C19-C18-C15	-2.15	109.15	114.59
5	A	404	LAE	C5-C1-N11	-2.08	110.62	115.03

There are no chirality outliers.

5 of 7 torsion outliers are listed below:

Mol	Chain	Res	Type	Atoms
5	A	404	LAE	C14-C13-N11-C1
5	A	404	LAE	O35-C13-N11-C1
5	A	404	LAE	C13-C14-C15-C18
5	A	404	LAE	C13-C14-C15-O36
5	A	404	LAE	C15-C18-C19-C22

There are no ring outliers.

1 monomer is involved in 5 short contacts:

Mol	Chain	Res	Type	Clashes	Symm-Clashes
5	A	404	LAE	5	0

5.7 Other polymers [i](#)

There are no such residues in this entry.

5.8 Polymer linkage issues [i](#)

There are no chain breaks in this entry.

6 Fit of model and data [i](#)

6.1 Protein, DNA and RNA chains [i](#)

In the following table, the column labelled ‘#RSRZ > 2’ contains the number (and percentage) of RSRZ outliers, followed by percent RSRZ outliers for the chain as percentile scores relative to all X-ray entries and entries of similar resolution. The OWAB column contains the minimum, median, 95th percentile and maximum values of the occupancy-weighted average B-factor per residue. The column labelled ‘Q < 0.9’ lists the number of (and percentage) of residues with an average occupancy less than 0.9.

Mol	Chain	Analysed	<RSRZ>	#RSRZ>2	OWAB(Å ²)	Q<0.9
1	A	322/330 (97%)	-1.16	0 100 100	8, 18, 39, 58	0
1	B	322/330 (97%)	-1.16	0 100 100	7, 17, 39, 63	0
1	C	322/330 (97%)	-0.82	0 100 100	27, 39, 53, 66	0
1	D	322/330 (97%)	-0.86	0 100 100	28, 38, 53, 64	0
All	All	1288/1320 (97%)	-1.00	0 100 100	7, 33, 51, 66	0

There are no RSRZ outliers to report.

6.2 Non-standard residues in protein, DNA, RNA chains [i](#)

In the following table, the Atoms column lists the number of modelled atoms in the group and the number defined in the chemical component dictionary. The B-factors column lists the minimum, median, 95th percentile and maximum values of B factors of atoms in the group. The column labelled ‘Q < 0.9’ lists the number of atoms with occupancy less than 0.9.

Mol	Type	Chain	Res	Atoms	RSCC	RSR	B-factors(Å ²)	Q<0.9
1	KCX	A	145	12/13	0.99	0.03	5,15,25,25	0
1	KCX	B	145	12/13	0.99	0.03	7,18,29,38	0
1	KCX	C	145	12/13	0.99	0.04	28,35,44,45	0
1	KCX	D	145	12/13	0.99	0.04	28,32,38,46	0

6.3 Carbohydrates [i](#)

There are no oligosaccharides in this entry.

6.4 Ligands [i](#)

In the following table, the Atoms column lists the number of modelled atoms in the group and the number defined in the chemical component dictionary. The B-factors column lists the minimum, median, 95th percentile and maximum values of B factors of atoms in the group. The column labelled 'Q< 0.9' lists the number of atoms with occupancy less than 0.9.

Mol	Type	Chain	Res	Atoms	RSCC	RSR	B-factors(Å ²)	Q<0.9
4	OH	C	403	1/1	0.98	0.04	34,34,34,34	0
5	LAE	A	404	17/17	0.98	0.07	35,41,47,48	17
4	OH	A	403	1/1	0.99	0.05	20,20,20,20	0
4	OH	B	403	1/1	0.99	0.05	20,20,20,20	0
3	ZN	A	402	1/1	1.00	0.03	16,16,16,16	1
3	ZN	B	402	1/1	1.00	0.02	21,21,21,21	1
3	ZN	C	402	1/1	1.00	0.02	35,35,35,35	1
3	ZN	D	402	1/1	1.00	0.02	31,31,31,31	1
2	FE	A	401	1/1	1.00	0.02	10,10,10,10	0
2	FE	B	401	1/1	1.00	0.02	12,12,12,12	0
2	FE	C	401	1/1	1.00	0.02	29,29,29,29	1
2	FE	D	401	1/1	1.00	0.01	30,30,30,30	0

6.5 Other polymers [i](#)

There are no such residues in this entry.