



wwPDB X-ray Structure Validation Summary Report

Mar 6, 2026 – 03:33 PM UTC

PDB ID : 1JUP / pdb_00001jup
Title : Crystal structure of the multidrug binding transcriptional repressor QacR bound to malachite green
Authors : Schumacher, M.A.; Miller, M.C.; Grkovic, S.; Brown, M.H.; Skurray, R.A.; Brennan, R.G.
Deposited on : 2001-08-24
Resolution : 2.95 Å(reported)

This is a wwPDB X-ray Structure Validation Summary Report for a publicly released PDB entry.

We welcome your comments at validation@mail.wwpdb.org

A user guide is available at

<https://www.wwpdb.org/validation/2017/XrayValidationReportHelp>

with specific help available everywhere you see the  symbol.

The types of validation reports are described at

<http://www.wwpdb.org/validation/2017/FAQs#types>.

The following versions of software and data (see [references](#) ) were used in the production of this report:

MolProbity : 4-5-2 with Phenix2.0
Mogul : 2022.3.0, CSD as543be (2022)
Xtrriage (Phenix) : 2.0
EDS : 3.0
Buster-report : wwPDB partial adaption of 1.1.7 (2018)
Percentile statistics : 20250101.v01 (using entries in the PDB archive January 1st 2025)
CCP4 : 9.0.010 (Gargrove)
Density-Fitness : 1.0.12
Ideal geometry (proteins) : Engh & Huber (2001)
Ideal geometry (DNA, RNA) : Parkinson et al. (1996)
Validation Pipeline (wwPDB-VP) : 2.49

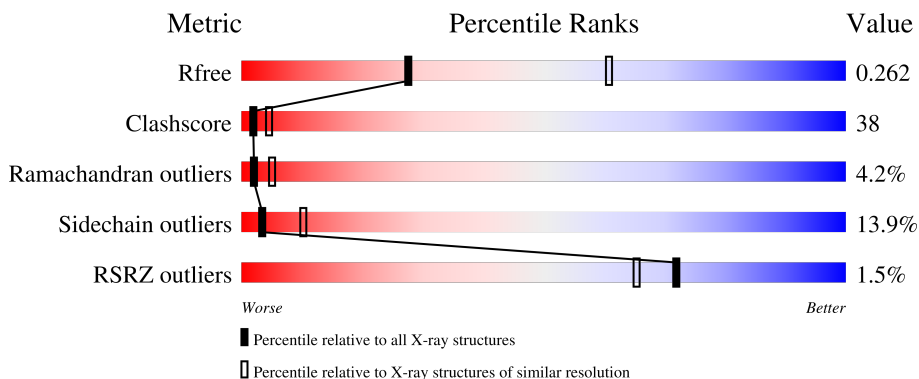
1 Overall quality at a glance

The following experimental techniques were used to determine the structure:

X-RAY DIFFRACTION

The reported resolution of this entry is 2.95 Å.

Percentile scores (ranging between 0-100) for global validation metrics of the entry are shown in the following graphic. The table shows the number of entries on which the scores are based.



Metric	Whole archive (#Entries)	Similar resolution (#Entries, resolution range(Å))
R_{free}	180053	1130 (2.98-2.94)
Clashscore	190562	1157 (2.98-2.94)
Ramachandran outliers	187476	1101 (2.98-2.94)
Sidechain outliers	187428	1101 (2.98-2.94)
RSRZ outliers	180081	1130 (2.98-2.94)

The table below summarises the geometric issues observed across the polymeric chains and their fit to the electron density. The red, orange, yellow and green segments of the lower bar indicate the fraction of residues that contain outliers for ≥ 3 , 2, 1 and 0 types of geometric quality criteria respectively. A grey segment represents the fraction of residues that are not modelled. The numeric value for each fraction is indicated below the corresponding segment, with a dot representing fractions $\leq 5\%$. The upper red bar (where present) indicates the fraction of residues that have poor fit to the electron density. The numeric value is given above the bar.

Mol	Chain	Length	Quality of chain
1	A	194	 3% 35% 44% 16% . .
1	B	194	 3% 29% 51% 14% . .
1	D	194	 3% 37% 47% 9% . .
1	E	194	 3% 34% 49% 12% . .

The following table lists non-polymeric compounds, carbohydrate monomers and non-standard residues in protein, DNA, RNA chains that are outliers for geometric or electron-density-fit criteria:

Mol	Type	Chain	Res	Chirality	Geometry	Clashes	Electron density
2	SO4	B	700	-	-	X	-

2 Entry composition [i](#)

There are 4 unique types of molecules in this entry. The entry contains 6330 atoms, of which 0 are hydrogens and 0 are deuteriums.

In the tables below, the ZeroOcc column contains the number of atoms modelled with zero occupancy, the AltConf column contains the number of residues with at least one atom in alternate conformation and the Trace column contains the number of residues modelled with at most 2 atoms.

- Molecule 1 is a protein called HYPOTHETICAL TRANSCRIPTIONAL REGULATOR IN QACA 5'REGION.

Mol	Chain	Residues	Atoms					ZeroOcc	AltConf	Trace
			Total	C	N	O	S			
1	B	186	1547	998	252	295	2	0	0	0
1	D	186	1547	998	252	295	2	0	0	0
1	A	186	1547	998	252	295	2	0	0	0
1	E	186	1547	998	252	295	2	0	0	0

There are 32 discrepancies between the modelled and reference sequences:

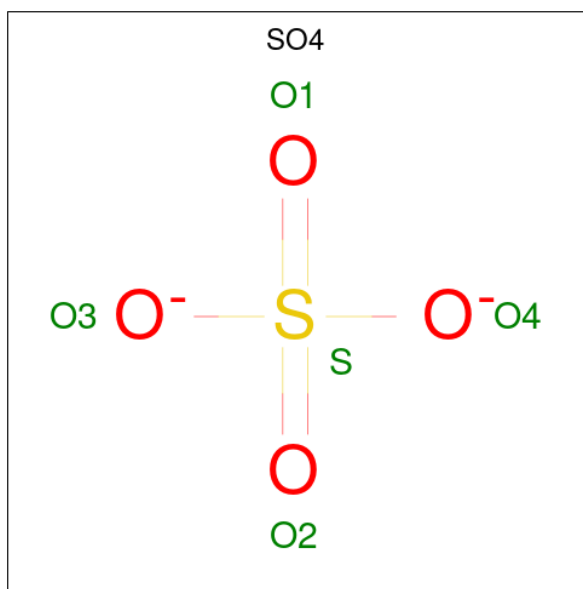
Chain	Residue	Modelled	Actual	Comment	Reference
B	72	ALA	CYS	engineered mutation	UNP P0A0N4
B	141	SER	CYS	engineered mutation	UNP P0A0N4
B	189	HIS	-	expression tag	UNP P0A0N4
B	190	HIS	-	expression tag	UNP P0A0N4
B	191	HIS	-	expression tag	UNP P0A0N4
B	192	HIS	-	expression tag	UNP P0A0N4
B	193	HIS	-	expression tag	UNP P0A0N4
B	194	HIS	-	expression tag	UNP P0A0N4
D	72	ALA	CYS	engineered mutation	UNP P0A0N4
D	141	SER	CYS	engineered mutation	UNP P0A0N4
D	189	HIS	-	expression tag	UNP P0A0N4
D	190	HIS	-	expression tag	UNP P0A0N4
D	191	HIS	-	expression tag	UNP P0A0N4
D	192	HIS	-	expression tag	UNP P0A0N4
D	193	HIS	-	expression tag	UNP P0A0N4
D	194	HIS	-	expression tag	UNP P0A0N4
A	72	ALA	CYS	engineered mutation	UNP P0A0N4
A	141	SER	CYS	engineered mutation	UNP P0A0N4
A	189	HIS	-	expression tag	UNP P0A0N4
A	190	HIS	-	expression tag	UNP P0A0N4

Continued on next page...

Continued from previous page...

Chain	Residue	Modelled	Actual	Comment	Reference
A	191	HIS	-	expression tag	UNP P0A0N4
A	192	HIS	-	expression tag	UNP P0A0N4
A	193	HIS	-	expression tag	UNP P0A0N4
A	194	HIS	-	expression tag	UNP P0A0N4
E	72	ALA	CYS	engineered mutation	UNP P0A0N4
E	141	SER	CYS	engineered mutation	UNP P0A0N4
E	189	HIS	-	expression tag	UNP P0A0N4
E	190	HIS	-	expression tag	UNP P0A0N4
E	191	HIS	-	expression tag	UNP P0A0N4
E	192	HIS	-	expression tag	UNP P0A0N4
E	193	HIS	-	expression tag	UNP P0A0N4
E	194	HIS	-	expression tag	UNP P0A0N4

- Molecule 2 is SULFATE ION (CCD ID: SO4) (formula: O₄S).



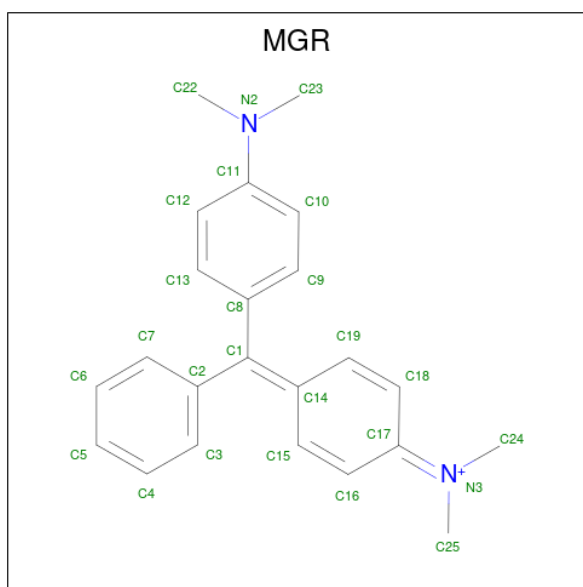
Mol	Chain	Residues	Atoms	ZeroOcc	AltConf
2	B	1	Total O S 5 4 1	0	0
2	B	1	Total O S 5 4 1	0	0
2	B	1	Total O S 5 4 1	0	0
2	B	1	Total O S 5 4 1	0	0
2	B	1	Total O S 5 4 1	0	0

Continued on next page...

Continued from previous page...

Mol	Chain	Residues	Atoms			ZeroOcc	AltConf
2	D	1	Total	O	S	0	0
			5	4	1		
2	D	1	Total	O	S	0	0
			5	4	1		
2	D	1	Total	O	S	0	0
			5	4	1		
2	D	1	Total	O	S	0	0
			5	4	1		
2	A	1	Total	O	S	0	0
			5	4	1		
2	A	1	Total	O	S	0	0
			5	4	1		
2	A	1	Total	O	S	0	0
			5	4	1		
2	A	1	Total	O	S	0	0
			5	4	1		
2	A	1	Total	O	S	0	0
			5	4	1		
2	E	1	Total	O	S	0	0
			5	4	1		
2	E	1	Total	O	S	0	0
			5	4	1		
2	E	1	Total	O	S	0	0
			5	4	1		
2	E	1	Total	O	S	0	0
			5	4	1		
2	E	1	Total	O	S	0	0
			5	4	1		
2	E	1	Total	O	S	0	0
			5	4	1		

- Molecule 3 is MALACHITE GREEN (CCD ID: MGR) (formula: $C_{23}H_{25}N_2$).



Mol	Chain	Residues	Atoms		ZeroOcc	AltConf	
3	A	1	Total	C	N	0	0
			25	23	2		

- Molecule 4 is water.

Mol	Chain	Residues	Atoms		ZeroOcc	AltConf
4	B	1	Total	O	0	0
			1	1		
4	D	2	Total	O	0	0
			2	2		
4	A	2	Total	O	0	0
			2	2		
4	E	2	Total	O	0	0
			2	2		



● Molecule 1: HYPOTHETICAL TRANSCRIPTIONAL REGULATOR IN QACA 5' REGION



4 Data and refinement statistics

Property	Value	Source
Space group	P 42 21 2	Depositor
Cell constants a, b, c, α , β , γ	174.20Å 174.20Å 96.30Å 90.00° 90.00° 90.00°	Depositor
Resolution (Å)	64.60 – 2.95 64.60 – 2.95	Depositor EDS
% Data completeness (in resolution range)	81.9 (64.60-2.95) 81.9 (64.60-2.95)	Depositor EDS
R_{merge}	0.09	Depositor
R_{sym}	0.09	Depositor
$\langle I/\sigma(I) \rangle$ ¹	2.32 (at 2.86Å)	Xtrriage
Refinement program	CNS	Depositor
R, R_{free}	0.238 , 0.281 0.221 , 0.262	Depositor DCC
R_{free} test set	2580 reflections (9.59%)	wwPDB-VP
Wilson B-factor (Å ²)	64.6	Xtrriage
Anisotropy	0.050	Xtrriage
Bulk solvent k_{sol} (e/Å ³), B_{sol} (Å ²)	0.34 , 66.9	EDS
L-test for twinning ²	$\langle L \rangle = 0.44$, $\langle L^2 \rangle = 0.26$	Xtrriage
Estimated twinning fraction	No twinning to report.	Xtrriage
F_o, F_c correlation	0.93	EDS
Total number of atoms	6330	wwPDB-VP
Average B, all atoms (Å ²)	64.0	wwPDB-VP

Xtrriage's analysis on translational NCS is as follows: *The largest off-origin peak in the Patterson function is 3.10% of the height of the origin peak. No significant pseudotranslation is detected.*

¹Intensities estimated from amplitudes.

²Theoretical values of $\langle |L| \rangle$, $\langle L^2 \rangle$ for acentric reflections are 0.5, 0.333 respectively for untwinned datasets, and 0.375, 0.2 for perfectly twinned datasets.

5 Model quality [i](#)

5.1 Standard geometry [i](#)

Bond lengths and bond angles in the following residue types are not validated in this section: SO4, MGR

The Z score for a bond length (or angle) is the number of standard deviations the observed value is removed from the expected value. A bond length (or angle) with $|Z| > 5$ is considered an outlier worth inspection. RMSZ is the root-mean-square of all Z scores of the bond lengths (or angles).

Mol	Chain	Bond lengths		Bond angles	
		RMSZ	# Z >5	RMSZ	# Z >5
1	A	0.95	2/1578 (0.1%)	1.23	18/2126 (0.8%)
1	B	0.86	1/1578 (0.1%)	1.18	11/2126 (0.5%)
1	D	0.83	1/1578 (0.1%)	1.21	18/2126 (0.8%)
1	E	0.87	1/1578 (0.1%)	1.24	20/2126 (0.9%)
All	All	0.88	5/6312 (0.1%)	1.21	67/8504 (0.8%)

Chiral center outliers are detected by calculating the chiral volume of a chiral center and verifying if the center is modelled as a planar moiety or with the opposite hand. A planarity outlier is detected by checking planarity of atoms in a peptide group, atoms in a mainchain group or atoms of a sidechain that are expected to be planar.

Mol	Chain	#Chirality outliers	#Planarity outliers
1	B	0	1
1	D	0	1
All	All	0	2

All (5) bond length outliers are listed below:

Mol	Chain	Res	Type	Atoms	Z	Observed(Å)	Ideal(Å)
1	A	175	MET	SD-CE	-7.46	1.60	1.79
1	D	175	MET	SD-CE	-6.26	1.63	1.79
1	B	175	MET	SD-CE	-5.76	1.65	1.79
1	E	175	MET	SD-CE	-5.58	1.65	1.79
1	A	155	ALA	CA-CB	-5.12	1.45	1.53

The worst 5 of 67 bond angle outliers are listed below:

Mol	Chain	Res	Type	Atoms	Z	Observed(°)	Ideal(°)
1	E	76	ARG	N-CA-C	-9.65	100.76	111.28
1	E	4	LYS	N-CA-C	-9.51	100.90	111.07

Continued on next page...

Continued from previous page...

Mol	Chain	Res	Type	Atoms	Z	Observed(°)	Ideal(°)
1	A	161	THR	N-CA-C	8.98	121.06	111.28
1	E	53	ILE	N-CA-C	-8.92	101.71	110.72
1	A	99	ILE	N-CA-C	-8.73	102.80	110.74

There are no chirality outliers.

All (2) planarity outliers are listed below:

Mol	Chain	Res	Type	Group
1	B	123	TYR	Sidechain
1	D	20	TYR	Sidechain

5.2 Too-close contacts

In the following table, the Non-H and H(model) columns list the number of non-hydrogen atoms and hydrogen atoms in the chain respectively. The H(added) column lists the number of hydrogen atoms added and optimized by MolProbity. The Clashes column lists the number of clashes within the asymmetric unit, whereas Symm-Clashes lists symmetry-related clashes.

Mol	Chain	Non-H	H(model)	H(added)	Clashes	Symm-Clashes
1	A	1547	0	1536	120	0
1	B	1547	0	1536	159	0
1	D	1547	0	1536	119	0
1	E	1547	0	1536	105	0
2	A	25	0	0	2	0
2	B	25	0	0	2	0
2	D	20	0	0	0	0
2	E	40	0	0	1	0
3	A	25	0	25	4	0
4	A	2	0	0	0	0
4	B	1	0	0	0	0
4	D	2	0	0	0	0
4	E	2	0	0	0	0
All	All	6330	0	6169	481	0

The all-atom clashscore is defined as the number of clashes found per 1000 atoms (including hydrogen atoms). The all-atom clashscore for this structure is 38.

The worst 5 of 481 close contacts within the same asymmetric unit are listed below, sorted by their clash magnitude.

Atom-1	Atom-2	Interatomic distance (Å)	Clash overlap (Å)
1:B:14:LEU:HD23	1:B:23:THR:HB	1.34	1.07
1:A:83:ASN:HB3	1:A:175:MET:HE2	1.35	1.03
1:E:44:LYS:HG2	1:E:45:THR:HG23	1.42	0.98
1:D:2:ASN:HD22	1:D:3:LEU:H	0.98	0.97
1:A:21:ASN:H	1:A:21:ASN:HD22	1.13	0.94

There are no symmetry-related clashes.

5.3 Torsion angles [i](#)

5.3.1 Protein backbone [i](#)

In the following table, the Percentiles column shows the percent Ramachandran outliers of the chain as a percentile score with respect to all X-ray entries followed by that with respect to entries of similar resolution.

The Analysed column shows the number of residues for which the backbone conformation was analysed, and the total number of residues.

Mol	Chain	Analysed	Favoured	Allowed	Outliers	Percentiles	
1	A	184/194 (95%)	163 (89%)	18 (10%)	3 (2%)	7	21
1	B	184/194 (95%)	142 (77%)	29 (16%)	13 (7%)	1	1
1	D	184/194 (95%)	158 (86%)	20 (11%)	6 (3%)	3	7
1	E	184/194 (95%)	144 (78%)	31 (17%)	9 (5%)	1	3
All	All	736/776 (95%)	607 (82%)	98 (13%)	31 (4%)	2	5

5 of 31 Ramachandran outliers are listed below:

Mol	Chain	Res	Type
1	B	92	TYR
1	B	145	VAL
1	B	165	GLU
1	D	164	HIS
1	A	164	HIS

5.3.2 Protein sidechains [i](#)

In the following table, the Percentiles column shows the percent sidechain outliers of the chain as a percentile score with respect to all X-ray entries followed by that with respect to entries of similar resolution.

The Analysed column shows the number of residues for which the sidechain conformation was analysed, and the total number of residues.

Mol	Chain	Analysed	Rotameric	Outliers	Percentiles	
1	A	169/177 (96%)	137 (81%)	32 (19%)	1	3
1	B	169/177 (96%)	144 (85%)	25 (15%)	3	9
1	D	169/177 (96%)	152 (90%)	17 (10%)	7	20
1	E	169/177 (96%)	149 (88%)	20 (12%)	5	15
All	All	676/708 (96%)	582 (86%)	94 (14%)	3	10

5 of 94 residues with a non-rotameric sidechain are listed below:

Mol	Chain	Res	Type
1	A	108	LYS
1	A	173	LYS
1	A	113	ASN
1	A	164	HIS
1	E	24	THR

Sometimes sidechains can be flipped to improve hydrogen bonding and reduce clashes. 5 of 59 such sidechains are listed below:

Mol	Chain	Res	Type
1	D	167	ASN
1	E	121	ASN
1	A	113	ASN
1	E	117	ASN
1	E	62	GLN

5.3.3 RNA [i](#)

There are no RNA molecules in this entry.

5.4 Non-standard residues in protein, DNA, RNA chains [i](#)

There are no non-standard protein/DNA/RNA residues in this entry.

5.5 Carbohydrates [i](#)

There are no oligosaccharides in this entry.

5.6 Ligand geometry

23 ligands are modelled in this entry.

In the following table, the Counts columns list the number of bonds (or angles) for which Mogul statistics could be retrieved, the number of bonds (or angles) that are observed in the model and the number of bonds (or angles) that are defined in the Chemical Component Dictionary. The Link column lists molecule types, if any, to which the group is linked. The Z score for a bond length (or angle) is the number of standard deviations the observed value is removed from the expected value. A bond length (or angle) with $|Z| > 2$ is considered an outlier worth inspection. RMSZ is the root-mean-square of all Z scores of the bond lengths (or angles).

Mol	Type	Chain	Res	Link	Bond lengths			Bond angles		
					Counts	RMSZ	# Z > 2	Counts	RMSZ	# Z > 2
2	SO4	E	901	-	4,4,4	0.37	0	6,6,6	0.16	0
2	SO4	D	999	-	4,4,4	0.73	0	6,6,6	0.10	0
2	SO4	E	904	-	4,4,4	0.41	0	6,6,6	0.11	0
2	SO4	D	899	-	4,4,4	0.41	0	6,6,6	0.14	0
2	SO4	E	579	-	4,4,4	0.39	0	6,6,6	0.11	0
2	SO4	E	902	-	4,4,4	0.40	0	6,6,6	0.10	0
2	SO4	B	1000	-	4,4,4	0.37	0	6,6,6	0.10	0
2	SO4	E	699	-	4,4,4	0.43	0	6,6,6	0.15	0
2	SO4	D	900	-	4,4,4	0.39	0	6,6,6	0.10	0
2	SO4	E	903	-	4,4,4	0.44	0	6,6,6	0.06	0
2	SO4	D	399	-	4,4,4	0.35	0	6,6,6	0.07	0
2	SO4	E	639	-	4,4,4	0.36	0	6,6,6	0.04	0
2	SO4	B	195	-	4,4,4	0.37	0	6,6,6	0.17	0
3	MGR	A	200	-	27,27,27	3.90	17 (62%)	37,37,37	1.46	7 (18%)
2	SO4	E	900	-	4,4,4	0.40	0	6,6,6	0.15	0
2	SO4	B	199	-	4,4,4	0.41	0	6,6,6	0.12	0
2	SO4	A	800	-	4,4,4	0.42	0	6,6,6	0.12	0
2	SO4	A	801	-	4,4,4	0.39	0	6,6,6	0.13	0
2	SO4	B	499	-	4,4,4	0.43	0	6,6,6	0.10	0
2	SO4	A	799	-	4,4,4	0.41	0	6,6,6	0.11	0
2	SO4	A	299	-	4,4,4	0.41	0	6,6,6	0.15	0
2	SO4	B	700	-	4,4,4	0.41	0	6,6,6	0.11	0
2	SO4	A	802	-	4,4,4	0.30	0	6,6,6	0.15	0

In the following table, the Chirals column lists the number of chiral outliers, the number of chiral centers analysed, the number of these observed in the model and the number defined in the Chemical Component Dictionary. Similar counts are reported in the Torsion and Rings columns. '-' means no outliers of that kind were identified.

Mol	Type	Chain	Res	Link	Chirals	Torsions	Rings
3	MGR	A	200	-	-	12/20/30/30	0/3/3/3

The worst 5 of 17 bond length outliers are listed below:

Mol	Chain	Res	Type	Atoms	Z	Observed(Å)	Ideal(Å)
3	A	200	MGR	C9-C8	8.80	1.52	1.39
3	A	200	MGR	C7-C2	7.98	1.51	1.39
3	A	200	MGR	C12-C11	7.43	1.53	1.39
3	A	200	MGR	C13-C8	6.01	1.48	1.39
3	A	200	MGR	C2-C1	5.21	1.58	1.49

The worst 5 of 7 bond angle outliers are listed below:

Mol	Chain	Res	Type	Atoms	Z	Observed(°)	Ideal(°)
3	A	200	MGR	C18-C17-N3	-3.45	118.87	121.75
3	A	200	MGR	C10-C9-C8	3.37	124.39	120.80
3	A	200	MGR	C7-C2-C3	-2.78	115.03	118.57
3	A	200	MGR	C8-C1-C2	2.68	120.69	115.34
3	A	200	MGR	C6-C7-C2	2.46	122.78	120.36

There are no chirality outliers.

5 of 12 torsion outliers are listed below:

Mol	Chain	Res	Type	Atoms
3	A	200	MGR	C8-C1-C14-C15
3	A	200	MGR	C16-C17-N3-C24
3	A	200	MGR	C16-C17-N3-C25
3	A	200	MGR	C18-C17-N3-C24
3	A	200	MGR	C18-C17-N3-C25

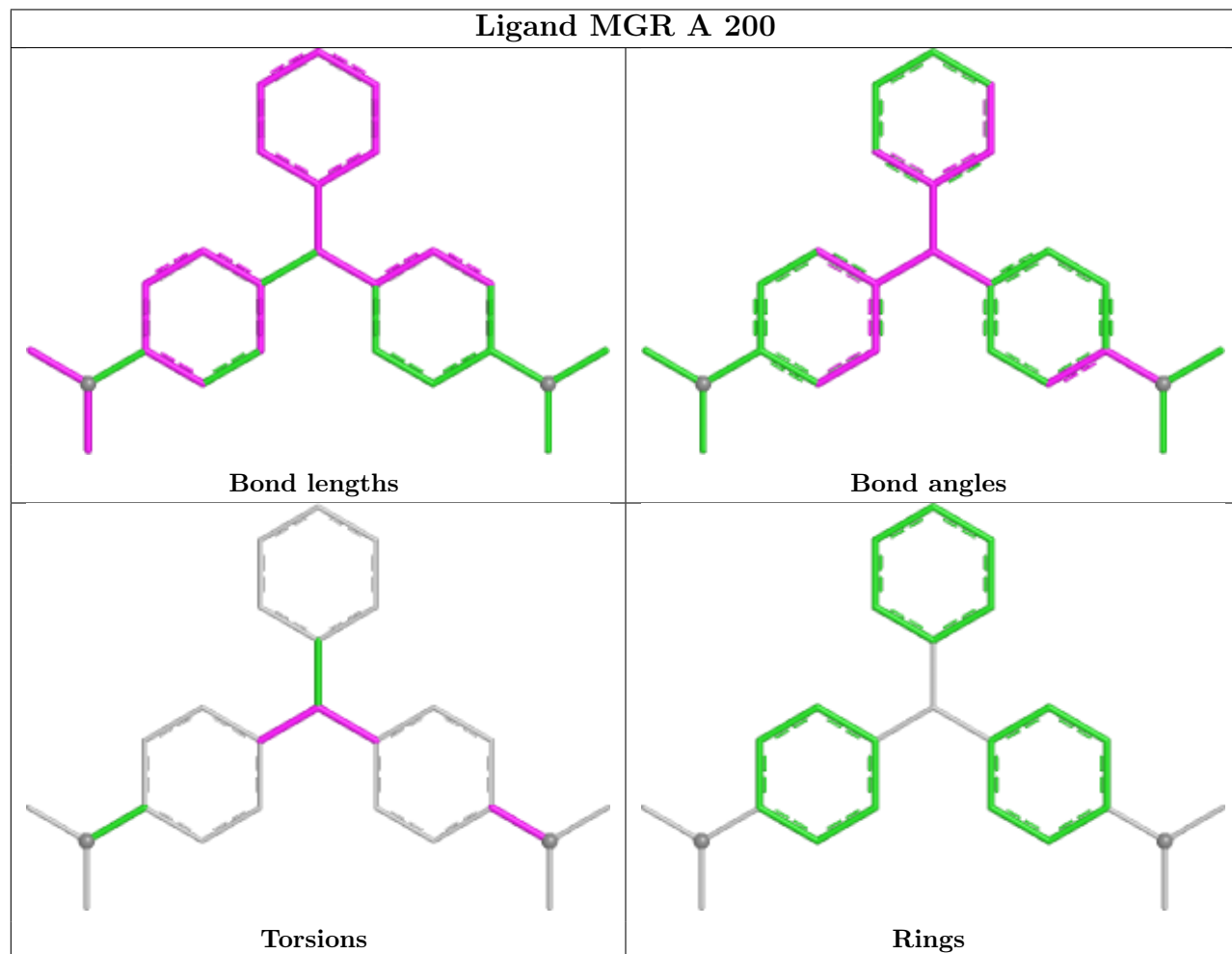
There are no ring outliers.

5 monomers are involved in 9 short contacts:

Mol	Chain	Res	Type	Clashes	Symm-Clashes
2	E	902	SO4	1	0
3	A	200	MGR	4	0
2	A	800	SO4	1	0
2	A	801	SO4	1	0
2	B	700	SO4	2	0

The following is a two-dimensional graphical depiction of Mogul quality analysis of bond lengths, bond angles, torsion angles, and ring geometry for all instances of the Ligand of Interest. In addition, ligands with molecular weight > 250 and outliers as shown on the validation Tables will also be included. For torsion angles, if less than 5% of the Mogul distribution of torsion angles is within 10 degrees of the torsion angle in question, then that torsion angle is considered an outlier. Any bond that is central to one or more torsion angles identified as an outlier by Mogul will be

highlighted in the graph. For rings, the root-mean-square deviation (RMSD) between the ring in question and similar rings identified by Mogul is calculated over all ring torsion angles. If the average RMSD is greater than 60 degrees and the minimal RMSD between the ring in question and any Mogul-identified rings is also greater than 60 degrees, then that ring is considered an outlier. The outliers are highlighted in purple. The color gray indicates Mogul did not find sufficient equivalents in the CSD to analyse the geometry.



5.7 Other polymers [\(i\)](#)

There are no such residues in this entry.

5.8 Polymer linkage issues [\(i\)](#)

There are no chain breaks in this entry.

6 Fit of model and data [i](#)

6.1 Protein, DNA and RNA chains [i](#)

In the following table, the column labelled ‘#RSRZ > 2’ contains the number (and percentage) of RSRZ outliers, followed by percent RSRZ outliers for the chain as percentile scores relative to all X-ray entries and entries of similar resolution. The OWAB column contains the minimum, median, 95th percentile and maximum values of the occupancy-weighted average B-factor per residue. The column labelled ‘Q < 0.9’ lists the number of (and percentage) of residues with an average occupancy less than 0.9.

Mol	Chain	Analysed	<RSRZ>	#RSRZ>2	OWAB(Å ²)	Q<0.9
1	A	186/194 (95%)	-0.42	2 (1%) 78 73	29, 52, 86, 110	0
1	B	186/194 (95%)	0.02	6 (3%) 50 43	35, 64, 118, 137	0
1	D	186/194 (95%)	-0.17	2 (1%) 78 73	39, 65, 98, 112	0
1	E	186/194 (95%)	-0.46	1 (0%) 87 83	36, 54, 92, 104	0
All	All	744/776 (95%)	-0.26	11 (1%) 72 65	29, 58, 104, 137	0

The worst 5 of 11 RSRZ outliers are listed below:

Mol	Chain	Res	Type	RSRZ
1	B	41	TYR	3.9
1	D	2	ASN	2.5
1	A	107	TYR	2.3
1	A	164	HIS	2.3
1	B	42	HIS	2.2

6.2 Non-standard residues in protein, DNA, RNA chains [i](#)

There are no non-standard protein/DNA/RNA residues in this entry.

6.3 Carbohydrates [i](#)

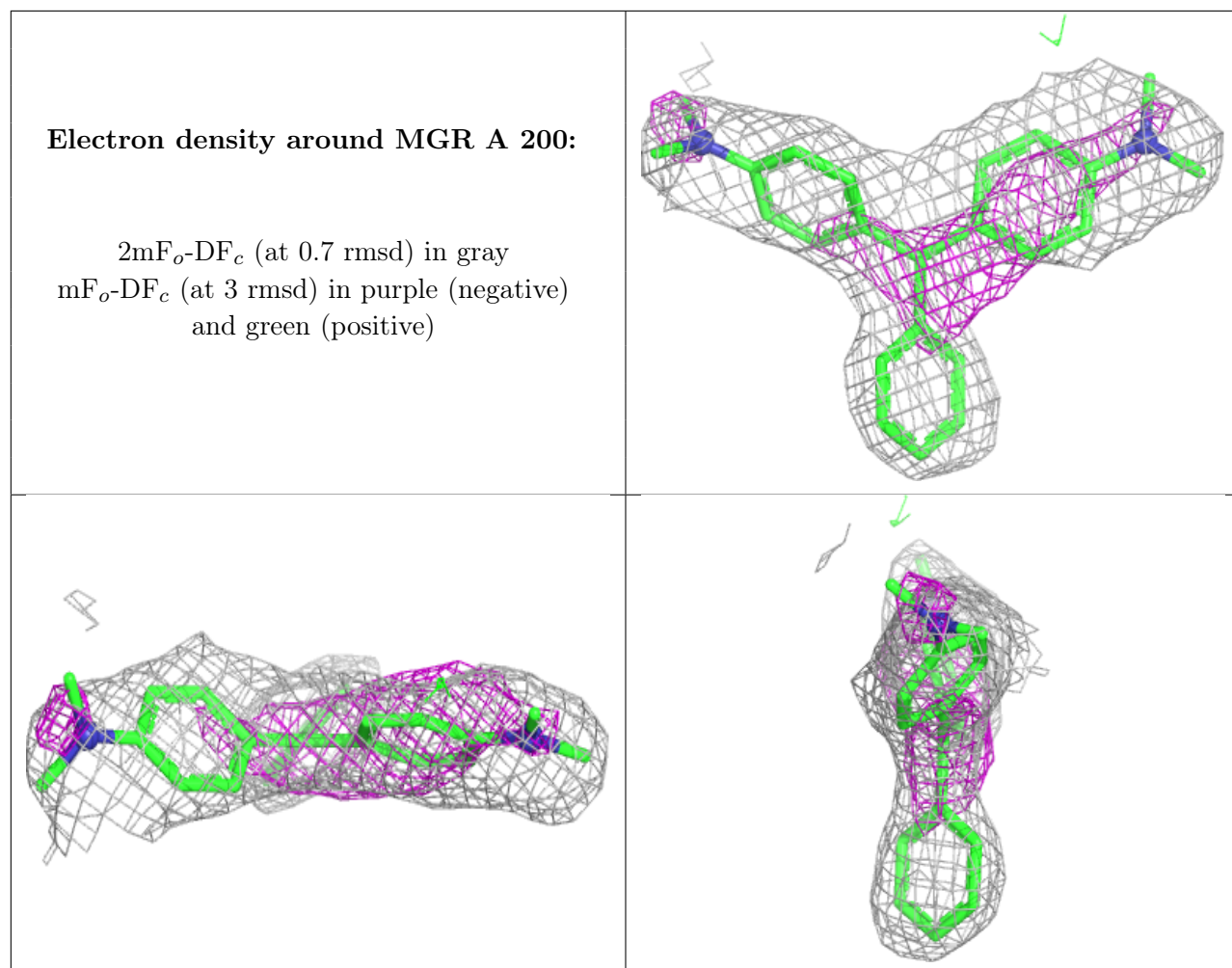
There are no oligosaccharides in this entry.

6.4 Ligands [i](#)

In the following table, the Atoms column lists the number of modelled atoms in the group and the number defined in the chemical component dictionary. The B-factors column lists the minimum, median, 95th percentile and maximum values of B factors of atoms in the group. The column labelled ‘Q < 0.9’ lists the number of atoms with occupancy less than 0.9.

Mol	Type	Chain	Res	Atoms	RSCC	RSR	B-factors(\AA^2)	Q<0.9
2	SO4	E	903	5/5	0.52	0.09	175,176,176,176	0
2	SO4	B	700	5/5	0.58	0.09	199,199,199,200	0
2	SO4	B	195	5/5	0.58	0.13	184,185,185,185	0
2	SO4	E	699	5/5	0.60	0.12	151,151,151,152	0
2	SO4	D	999	5/5	0.61	0.24	111,111,111,114	0
2	SO4	E	579	5/5	0.63	0.10	182,182,182,182	0
2	SO4	B	1000	5/5	0.68	0.09	186,186,187,187	0
2	SO4	E	900	5/5	0.70	0.11	143,143,143,143	0
2	SO4	E	902	5/5	0.73	0.11	188,188,188,188	0
2	SO4	A	299	5/5	0.75	0.10	152,152,152,152	0
2	SO4	B	199	5/5	0.75	0.17	154,154,154,155	0
2	SO4	D	900	5/5	0.77	0.10	148,148,148,148	0
2	SO4	B	499	5/5	0.78	0.11	160,161,161,161	0
2	SO4	D	899	5/5	0.78	0.09	161,161,162,162	0
2	SO4	A	800	5/5	0.79	0.10	141,141,141,141	0
2	SO4	A	801	5/5	0.80	0.11	166,167,167,167	0
2	SO4	E	904	5/5	0.84	0.11	179,179,179,180	0
2	SO4	E	901	5/5	0.87	0.12	147,148,148,148	0
2	SO4	A	802	5/5	0.87	0.10	170,171,171,171	0
2	SO4	A	799	5/5	0.89	0.13	140,140,140,140	0
3	MGR	A	200	25/25	0.90	0.11	27,30,32,34	0
2	SO4	D	399	5/5	0.92	0.18	198,198,198,199	0
2	SO4	E	639	5/5	0.95	0.12	195,195,195,196	0

The following is a graphical depiction of the model fit to experimental electron density of all instances of the Ligand of Interest. In addition, ligands with molecular weight > 250 and outliers as shown on the geometry validation Tables will also be included. Each fit is shown from different orientation to approximate a three-dimensional view.



6.5 Other polymers [i](#)

There are no such residues in this entry.