



wwPDB X-ray Structure Validation Summary Report ⓘ

Mar 9, 2026 – 12:44 PM UTC

PDB ID : 3JUS / pdb_00003jus
Title : Crystal structure of human lanosterol 14alpha-demethylase (CYP51) in complex with econazole
Authors : Strushkevich, N.; MacKenzie, F.; Arrowsmith, C.H.; Edwards, A.M.; Bountra, C.; Weigelt, J.; Usanov, S.A.; Park, H.; Structural Genomics Consortium (SGC)
Deposited on : 2009-09-15
Resolution : 2.90 Å(reported)

This is a wwPDB X-ray Structure Validation Summary Report for a publicly released PDB entry.

We welcome your comments at validation@mail.wwpdb.org

A user guide is available at

<https://www.wwpdb.org/validation/2017/XrayValidationReportHelp>

with specific help available everywhere you see the ⓘ symbol.

The types of validation reports are described at

<http://www.wwpdb.org/validation/2017/FAQs#types>.

The following versions of software and data (see [references](#) ①) were used in the production of this report:

MolProbity : 4-5-2 with Phenix2.0
Mogul : 2022.3.0, CSD as543be (2022)
Xtrriage (Phenix) : 2.0
EDS : 3.0
Buster-report : wwPDB partial adaption of 1.1.7 (2018)
Percentile statistics : 20250101.v01 (using entries in the PDB archive January 1st 2025)
CCP4 : 9.0.010 (Gargrove)
Density-Fitness : 1.0.12
Ideal geometry (proteins) : Engh & Huber (2001)
Ideal geometry (DNA, RNA) : Parkinson et al. (1996)
Validation Pipeline (wwPDB-VP) : 2.49

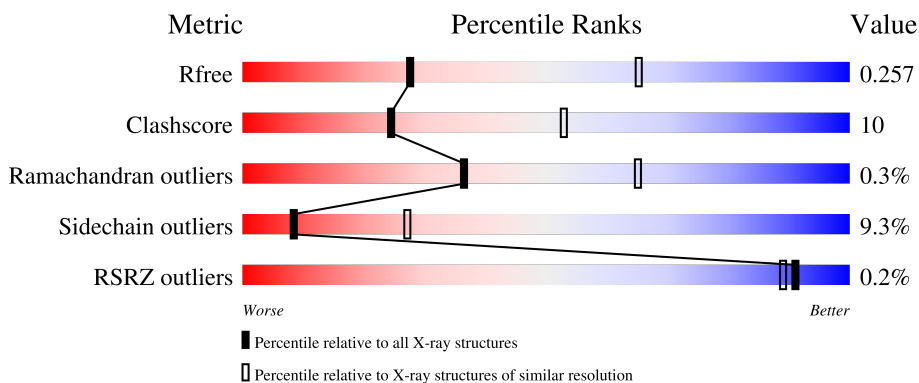
1 Overall quality at a glance

The following experimental techniques were used to determine the structure:

X-RAY DIFFRACTION

The reported resolution of this entry is 2.90 Å.

Percentile scores (ranging between 0-100) for global validation metrics of the entry are shown in the following graphic. The table shows the number of entries on which the scores are based.



Metric	Whole archive (#Entries)	Similar resolution (#Entries, resolution range(Å))
R_{free}	180053	2481 (2.90-2.90)
Clashscore	190562	2690 (2.90-2.90)
Ramachandran outliers	187476	2623 (2.90-2.90)
Sidechain outliers	187428	2625 (2.90-2.90)
RSRZ outliers	180081	2481 (2.90-2.90)

The table below summarises the geometric issues observed across the polymeric chains and their fit to the electron density. The red, orange, yellow and green segments of the lower bar indicate the fraction of residues that contain outliers for ≥ 3 , 2, 1 and 0 types of geometric quality criteria respectively. A grey segment represents the fraction of residues that are not modelled. The numeric value for each fraction is indicated below the corresponding segment, with a dot representing fractions $\leq 5\%$. The upper red bar (where present) indicates the fraction of residues that have poor fit to the electron density. The numeric value is given above the bar.

Mol	Chain	Length	Quality of chain
1	1-A	461	
1	1-B	461	

The following table lists non-polymeric compounds, carbohydrate monomers and non-standard residues in protein, DNA, RNA chains that are outliers for geometric or electron-density-fit criteria:

Mol	Type	Chain	Res	Chirality	Geometry	Clashes	Electron density
5	ECN	1-A	602[A]	-	-	X	-
5	ECN	1-B	602[A]	-	-	X	-

2 Entry composition [i](#)

There are 6 unique types of molecules in this entry. The entry contains 7415 atoms, of which 0 are hydrogens and 0 are deuteriums.

In the tables below, the ZeroOcc column contains the number of atoms modelled with zero occupancy, the AltConf column contains the number of residues with at least one atom in alternate conformation and the Trace column contains the number of residues modelled with at most 2 atoms.

- Molecule 1 is a protein called Lanosterol 14-alpha demethylase.

Mol	Chain	Residues	Atoms					ZeroOcc	AltConf	Trace
			Total	C	N	O	S			
1	1-A	429	3450	2216	587	631	16	0	0	0
1	?-A	1	Total	C				0	0	1
			1	1						
1	1-B	445	3589	2310	611	652	16	0	0	0

There are 24 discrepancies between the modelled and reference sequences:

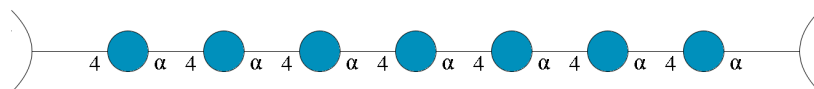
Chain	Residue	Modelled	Actual	Comment	Reference
A	49	MET	-	expression tag	UNP Q16850
A	50	ALA	-	expression tag	UNP Q16850
A	51	LYS	-	expression tag	UNP Q16850
A	52	LYS	-	expression tag	UNP Q16850
A	53	THR	-	expression tag	UNP Q16850
A	503	THR	-	expression tag	UNP Q16850
A	504	HIS	-	expression tag	UNP Q16850
A	505	HIS	-	expression tag	UNP Q16850
A	506	HIS	-	expression tag	UNP Q16850
A	507	HIS	-	expression tag	UNP Q16850
A	508	HIS	-	expression tag	UNP Q16850
A	509	HIS	-	expression tag	UNP Q16850
B	49	MET	-	expression tag	UNP Q16850
B	50	ALA	-	expression tag	UNP Q16850
B	51	LYS	-	expression tag	UNP Q16850
B	52	LYS	-	expression tag	UNP Q16850
B	53	THR	-	expression tag	UNP Q16850
B	503	THR	-	expression tag	UNP Q16850
B	504	HIS	-	expression tag	UNP Q16850
B	505	HIS	-	expression tag	UNP Q16850
B	506	HIS	-	expression tag	UNP Q16850
B	507	HIS	-	expression tag	UNP Q16850
B	508	HIS	-	expression tag	UNP Q16850

Continued on next page...

Continued from previous page...

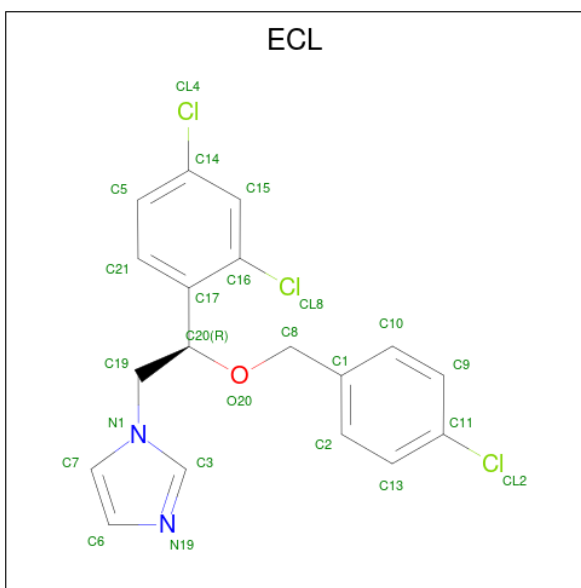
Chain	Residue	Modelled	Actual	Comment	Reference
B	509	HIS	-	expression tag	UNP Q16850

- Molecule 2 is an oligosaccharide called Cycloheptakis-(1-4)-(alpha-D-glucopyranose).



Mol	Chain	Residues	Atoms			ZeroOcc	AltConf	Trace
			Total	C	O			
2	1-C	7	77	42	35	0	0	0
2	1-D	7	77	42	35	0	0	0

- Molecule 3 is 1-[(2R)-2-[(4-chlorobenzyl)oxy]-2-(2,4-dichlorophenyl)ethyl]-1H-imidazole (CCD ID: ECL) (formula: C₁₈H₁₅Cl₃N₂O).



Mol	Chain	Residues	Atoms				ZeroOcc	AltConf	
			Total	C	Cl	N			O
3	1-A	1	24	18	3	2	1	0	1
3	1-B	1	24	18	3	2	1	0	1

- Molecule 4 is PROTOPORPHYRIN IX CONTAINING FE (CCD ID: HEM) (formula: C₃₄H₃₂FeN₄O₄).

Continued from previous page...

Mol	Chain	Residues	Atoms				ZeroOcc	AltConf	
			Total	C	Cl	N			O
5	1-B	1	24	18	3	2	1	0	1

- Molecule 6 is water.

Mol	Chain	Residues	Atoms		ZeroOcc	AltConf
6	1-A	29	Total	O	0	0
			29	29		
6	1-B	10	Total	O	0	0
			10	10		

SEQUENCE-PLOTS INFOmissingINFO

3 Data and refinement statistics

Property	Value	Source
Space group	P 4 21 2	Depositor
Cell constants a, b, c, α , β , γ	146.63Å 146.63Å 110.56Å 90.00° 90.00° 90.00°	Depositor
Resolution (Å)	24.52 – 2.90 24.52 – 2.90	Depositor EDS
% Data completeness (in resolution range)	99.2 (24.52-2.90) 99.2 (24.52-2.90)	Depositor EDS
R_{merge}	0.11	Depositor
R_{sym}	0.15	Depositor
$\langle I/\sigma(I) \rangle$ ¹	4.17 (at 2.89Å)	Xtrriage
Refinement program	REFMAC 5.2.0019	Depositor
R, R_{free}	0.203 , 0.272 (Not available) , 0.257	Depositor DCC
R_{free} test set	1373 reflections (5.01%)	wwPDB-VP
Wilson B-factor (Å ²)	66.4	Xtrriage
Anisotropy	0.050	Xtrriage
Bulk solvent k_{sol} (e/Å ³), B_{sol} (Å ²)	0.34 , 32.6	EDS
L-test for twinning ²	$\langle L \rangle = 0.49$, $\langle L^2 \rangle = 0.32$	Xtrriage
Estimated twinning fraction	No twinning to report.	Xtrriage
F_o, F_c correlation	0.94	EDS
Total number of atoms	7415	wwPDB-VP
Average B, all atoms (Å ²)	65.0	wwPDB-VP

Xtrriage's analysis on translational NCS is as follows: *The largest off-origin peak in the Patterson function is 3.73% of the height of the origin peak. No significant pseudotranslation is detected.*

¹Intensities estimated from amplitudes.

²Theoretical values of $\langle |L| \rangle$, $\langle L^2 \rangle$ for acentric reflections are 0.5, 0.333 respectively for untwinned datasets, and 0.375, 0.2 for perfectly twinned datasets.

4 Model quality [i](#)

4.1 Standard geometry [i](#)

Bond lengths and bond angles in the following residue types are not validated in this section: HEM, ECN, ECL, GLC

The Z score for a bond length (or angle) is the number of standard deviations the observed value is removed from the expected value. A bond length (or angle) with $|Z| > 5$ is considered an outlier worth inspection. RMSZ is the root-mean-square of all Z scores of the bond lengths (or angles).

Mol	Chain	Bond lengths		Bond angles	
		RMSZ	# $ Z > 5$	RMSZ	# $ Z > 5$
1	1-A	0.59	0/3551	0.91	5/4811 (0.1%)
1	1-B	0.56	0/3682	0.89	3/4988 (0.1%)
All	All	0.57	0/7233	0.90	8/9799 (0.1%)

There are no bond length outliers.

The worst 5 of 8 bond angle outliers are listed below:

Mol	Chain	Res	Type	Atoms	Z	Observed(°)	Ideal(°)
1	1-A	93	GLY	CA-C-N	5.97	125.52	119.19
1	1-A	93	GLY	C-N-CA	5.97	125.52	119.19
1	1-B	68	ILE	CA-C-N	5.70	125.38	119.05
1	1-B	68	ILE	C-N-CA	5.70	125.38	119.05
1	1-B	293	GLY	N-CA-C	-5.61	107.30	114.37

There are no chirality outliers.

There are no planarity outliers.

4.2 Too-close contacts [i](#)

In the following table, the Non-H and H(model) columns list the number of non-hydrogen atoms and hydrogen atoms in the chain respectively. The H(added) column lists the number of hydrogen atoms added and optimized by MolProbity. The Clashes column lists the number of clashes within the asymmetric unit, whereas Symm-Clashes lists symmetry-related clashes.

Mol	Chain	Non-H	H(model)	H(added)	Clashes	Symm-Clashes
1	?-A	1	0	0	0	0
1	1-A	3450	0	3449	66	0
1	1-B	3589	0	3581	63	0
2	1-C	77	0	63	1	0

Continued on next page...

Continued from previous page...

Mol	Chain	Non-H	H(model)	H(added)	Clashes	Symm-Clashes
2	1-D	77	0	63	0	0
3	1-A	24	0	15	0	0
3	1-B	24	0	15	1	0
4	1-A	43	0	30	7	0
4	1-B	43	0	30	7	0
5	1-A	24	0	15	8	0
5	1-B	24	0	15	7	0
6	1-A	29	0	0	1	0
6	1-B	10	0	0	2	0
All	All	7415	0	7276	147	0

The all-atom clashscore is defined as the number of clashes found per 1000 atoms (including hydrogen atoms). The all-atom clashscore for this structure is 10.

The worst 5 of 147 close contacts within the same asymmetric unit are listed below, sorted by their clash magnitude.

Atom-1	Atom-2	Interatomic distance (Å)	Clash overlap (Å)
5:A:602[A]:ECN:H8C1	5:A:602[A]:ECN:C3	1.49	1.40
5:B:602[A]:ECN:H8C1	5:B:602[A]:ECN:C3	1.65	1.25
5:A:602[A]:ECN:C3	5:A:602[A]:ECN:C8	2.39	1.01
5:A:602[A]:ECN:H8C1	5:A:602[A]:ECN:N1	1.71	0.93
1:B:334:GLN:HE22	1:B:472:PHE:H	1.23	0.86

There are no symmetry-related clashes.

4.3 Torsion angles [i](#)

4.3.1 Protein backbone [i](#)

In the following table, the Percentiles column shows the percent Ramachandran outliers of the chain as a percentile score with respect to all X-ray entries followed by that with respect to entries of similar resolution.

The Analysed column shows the number of residues for which the backbone conformation was analysed, and the total number of residues.

Mol	Chain	Analysed	Favoured	Allowed	Outliers	Percentiles
1	1-A	427/461 (93%)	408 (96%)	17 (4%)	2 (0%)	24 54
1	1-B	443/461 (96%)	416 (94%)	26 (6%)	1 (0%)	43 72
All	All	870/922 (94%)	824 (95%)	43 (5%)	3 (0%)	36 65

All (3) Ramachandran outliers are listed below:

Mol	Chain	Res	Type
1	1-A	292	ASP
1	1-A	489	HIS
1	1-B	488	ILE

4.3.2 Protein sidechains [i](#)

In the following table, the Percentiles column shows the percent sidechain outliers of the chain as a percentile score with respect to all X-ray entries followed by that with respect to entries of similar resolution.

The Analysed column shows the number of residues for which the sidechain conformation was analysed, and the total number of residues.

Mol	Chain	Analysed	Rotameric	Outliers	Percentiles	
1	1-A	376/403 (93%)	349 (93%)	27 (7%)	13	39
1	1-B	390/403 (97%)	346 (89%)	44 (11%)	5	19
All	All	766/806 (95%)	695 (91%)	71 (9%)	8	27

5 of 71 residues with a non-rotameric sidechain are listed below:

Mol	Chain	Res	Type
1	1-B	386	THR
1	1-B	400	GLN
1	1-B	428	GLN
1	1-A	448	ARG
1	1-A	420	ASP

Sometimes sidechains can be flipped to improve hydrogen bonding and reduce clashes. 5 of 17 such sidechains are listed below:

Mol	Chain	Res	Type
1	1-B	409	GLN
1	1-B	493	ASN
1	1-A	409	GLN
1	1-A	422	ASN
1	1-A	489	HIS

4.3.3 RNA [i](#)

There are no RNA molecules in this entry.

4.4 Non-standard residues in protein, DNA, RNA chains [i](#)

There are no non-standard protein/DNA/RNA residues in this entry.

4.5 Carbohydrates [i](#)

14 monosaccharides are modelled in this entry.

In the following table, the Counts columns list the number of bonds (or angles) for which Mogul statistics could be retrieved, the number of bonds (or angles) that are observed in the model and the number of bonds (or angles) that are defined in the Chemical Component Dictionary. The Link column lists molecule types, if any, to which the group is linked. The Z score for a bond length (or angle) is the number of standard deviations the observed value is removed from the expected value. A bond length (or angle) with $|Z| > 2$ is considered an outlier worth inspection. RMSZ is the root-mean-square of all Z scores of the bond lengths (or angles).

Mol	Type	Chain	Res	Link	Bond lengths			Bond angles		
					Counts	RMSZ	# Z > 2	Counts	RMSZ	# Z > 2
2	GLC	1-C	1	2	11,11,12	0.52	0	15,15,17	1.51	4 (26%)
2	GLC	1-C	2	2	11,11,12	0.48	0	15,15,17	2.05	2 (13%)
2	GLC	1-C	3	2	11,11,12	0.39	0	15,15,17	0.97	1 (6%)
2	GLC	1-C	4	2	11,11,12	0.37	0	15,15,17	1.01	2 (13%)
2	GLC	1-C	5	2	11,11,12	0.51	0	15,15,17	1.41	2 (13%)
2	GLC	1-C	6	2	11,11,12	0.38	0	15,15,17	1.79	2 (13%)
2	GLC	1-C	7	2	11,11,12	0.51	0	15,15,17	1.40	2 (13%)
2	GLC	1-D	1	2	11,11,12	0.42	0	15,15,17	2.25	3 (20%)
2	GLC	1-D	2	2	11,11,12	0.33	0	15,15,17	2.11	3 (20%)
2	GLC	1-D	3	2	11,11,12	0.42	0	15,15,17	1.17	1 (6%)
2	GLC	1-D	4	2	11,11,12	0.39	0	15,15,17	0.77	1 (6%)
2	GLC	1-D	5	2	11,11,12	0.40	0	15,15,17	1.25	1 (6%)
2	GLC	1-D	6	2	11,11,12	0.50	0	15,15,17	1.63	4 (26%)
2	GLC	1-D	7	2	11,11,12	0.72	0	15,15,17	1.80	2 (13%)

In the following table, the Chirals column lists the number of chiral outliers, the number of chiral centers analysed, the number of these observed in the model and the number defined in the Chemical Component Dictionary. Similar counts are reported in the Torsion and Rings columns. '-' means no outliers of that kind were identified.

Mol	Type	Chain	Res	Link	Chirals	Torsions	Rings
2	GLC	1-C	1	2	-	1/2/19/22	0/1/1/1
2	GLC	1-C	2	2	-	2/2/19/22	0/1/1/1

Continued on next page...

Continued from previous page...

Mol	Type	Chain	Res	Link	Chirals	Torsions	Rings
2	GLC	1-C	3	2	-	0/2/19/22	0/1/1/1
2	GLC	1-C	4	2	-	1/2/19/22	0/1/1/1
2	GLC	1-C	5	2	-	2/2/19/22	0/1/1/1
2	GLC	1-C	6	2	-	2/2/19/22	0/1/1/1
2	GLC	1-C	7	2	-	1/2/19/22	0/1/1/1
2	GLC	1-D	1	2	-	2/2/19/22	0/1/1/1
2	GLC	1-D	2	2	-	2/2/19/22	0/1/1/1
2	GLC	1-D	3	2	-	0/2/19/22	0/1/1/1
2	GLC	1-D	4	2	-	0/2/19/22	0/1/1/1
2	GLC	1-D	5	2	-	0/2/19/22	0/1/1/1
2	GLC	1-D	6	2	-	2/2/19/22	0/1/1/1
2	GLC	1-D	7	2	-	2/2/19/22	0/1/1/1

There are no bond length outliers.

The worst 5 of 30 bond angle outliers are listed below:

Mol	Chain	Res	Type	Atoms	Z	Observed(°)	Ideal(°)
2	1-D	1	GLC	C1-O5-C5	7.18	121.81	112.19
2	1-C	2	GLC	C1-O5-C5	6.79	121.28	112.19
2	1-D	2	GLC	C1-O5-C5	6.31	120.64	112.19
2	1-C	6	GLC	C1-O5-C5	5.65	119.76	112.19
2	1-D	7	GLC	C1-C2-C3	4.60	116.35	109.64

There are no chirality outliers.

5 of 17 torsion outliers are listed below:

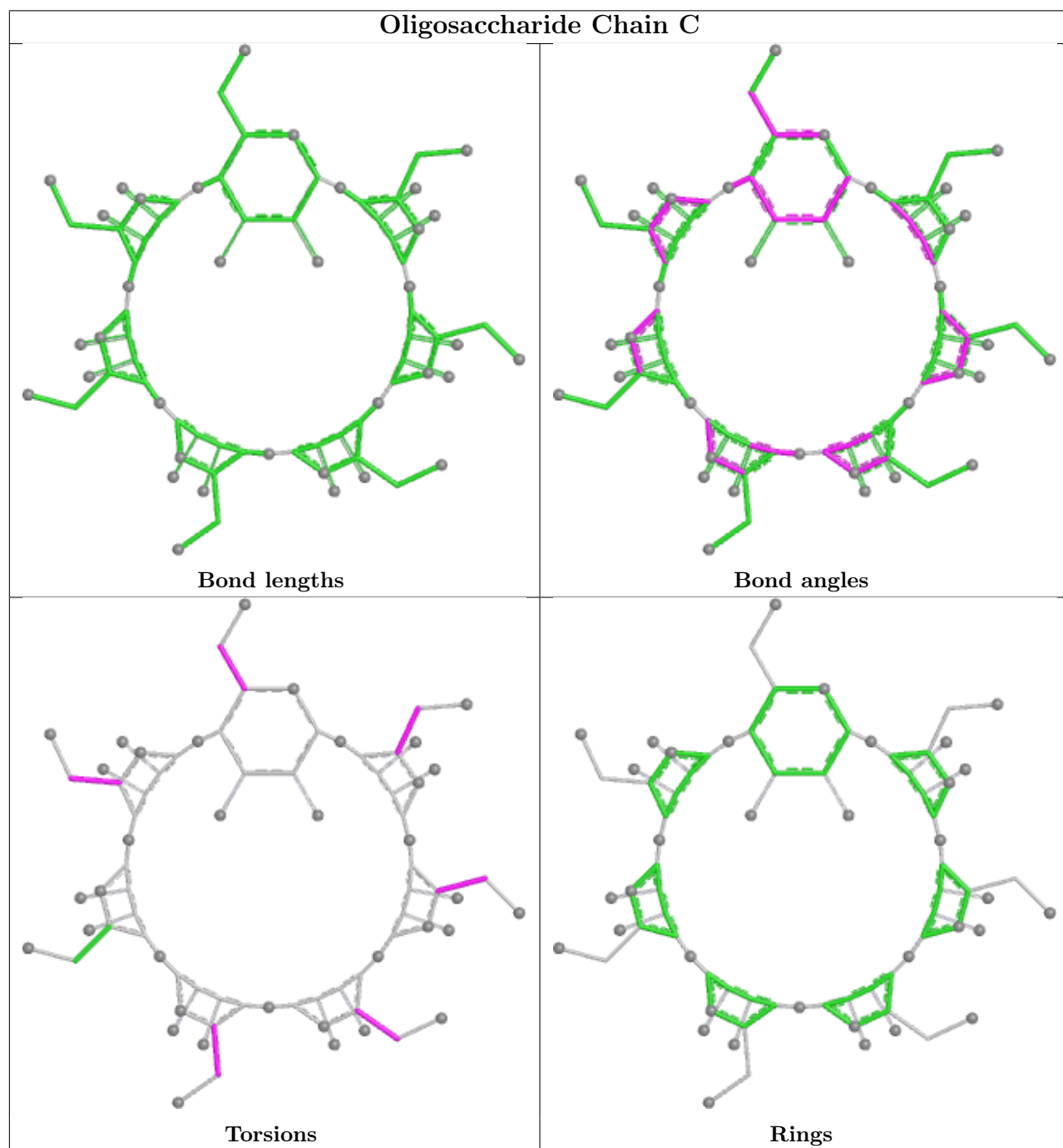
Mol	Chain	Res	Type	Atoms
2	1-D	7	GLC	C4-C5-C6-O6
2	1-C	2	GLC	O5-C5-C6-O6
2	1-C	6	GLC	O5-C5-C6-O6
2	1-D	7	GLC	O5-C5-C6-O6
2	1-D	6	GLC	O5-C5-C6-O6

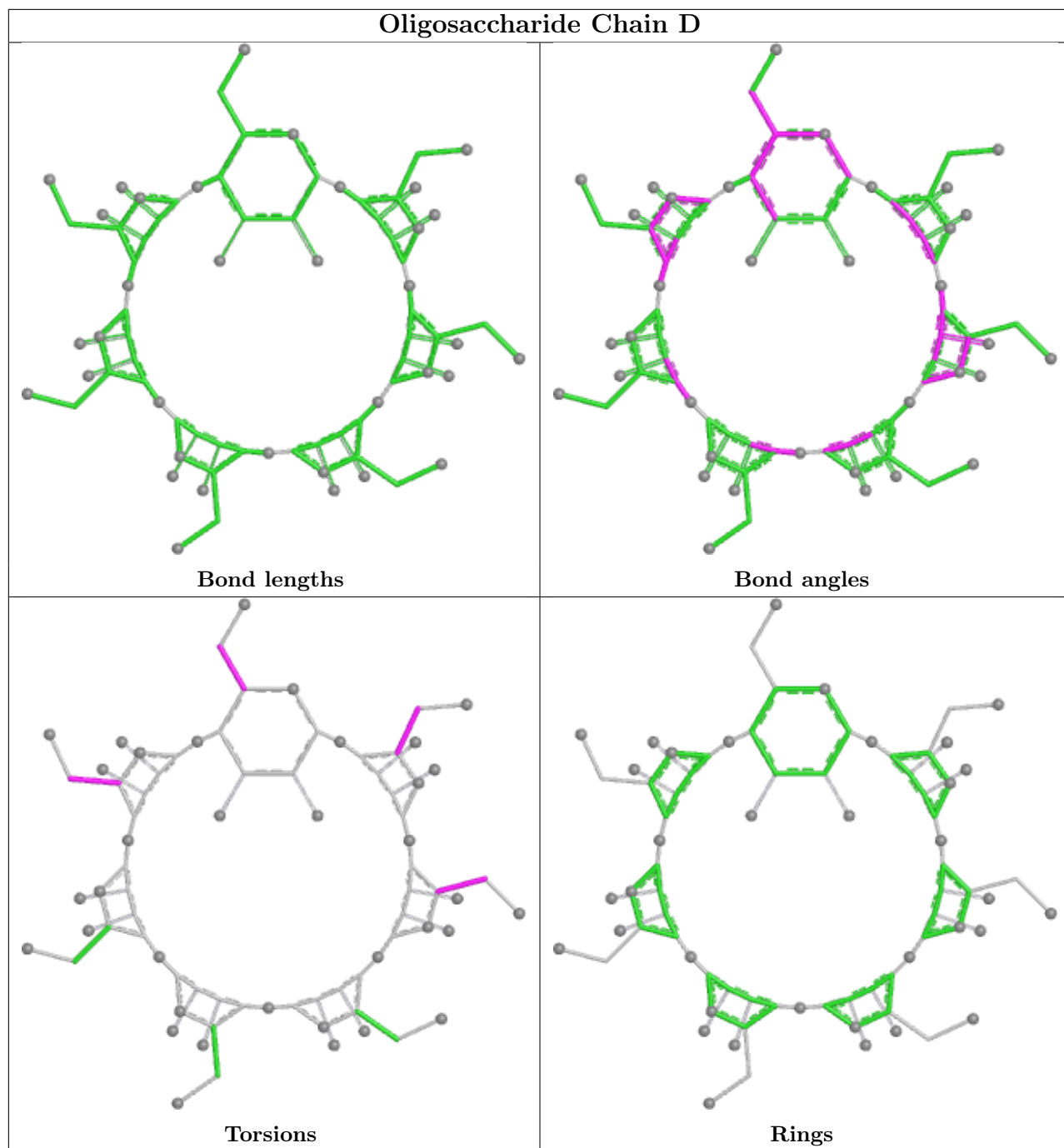
There are no ring outliers.

2 monomers are involved in 1 short contact:

Mol	Chain	Res	Type	Clashes	Symm-Clashes
2	1-C	3	GLC	1	0
2	1-C	2	GLC	1	0

The following is a two-dimensional graphical depiction of Mogul quality analysis of bond lengths, bond angles, torsion angles, and ring geometry for oligosaccharide.





4.6 Ligand geometry [i](#)

6 ligands are modelled in this entry.

In the following table, the Counts columns list the number of bonds (or angles) for which Mogul statistics could be retrieved, the number of bonds (or angles) that are observed in the model and the number of bonds (or angles) that are defined in the Chemical Component Dictionary. The Link column lists molecule types, if any, to which the group is linked. The Z score for a bond length (or angle) is the number of standard deviations the observed value is removed from the expected value. A bond length (or angle) with $|Z| > 2$ is considered an outlier worth inspection.

RMSZ is the root-mean-square of all Z scores of the bond lengths (or angles).

Mol	Type	Chain	Res	Link	Bond lengths			Bond angles		
					Counts	RMSZ	# Z > 2	Counts	RMSZ	# Z > 2
3	ECL	1-A	600[B]	4	26,26,26	1.12	3 (11%)	35,35,35	1.39	5 (14%)
3	ECL	1-B	600[B]	4	26,26,26	1.26	5 (19%)	35,35,35	1.56	6 (17%)
5	ECN	1-B	602[A]	4	26,26,26	1.01	3 (11%)	35,35,35	1.79	6 (17%)
4	HEM	1-A	601	3,5,1	50,50,50	1.87	8 (16%)	67,82,82	1.26	7 (10%)
4	HEM	1-B	601	3,5,1	50,50,50	1.89	10 (20%)	67,82,82	1.16	1 (1%)
5	ECN	1-A	602[A]	4	26,26,26	0.98	2 (7%)	35,35,35	1.61	5 (14%)

In the following table, the Chirals column lists the number of chiral outliers, the number of chiral centers analysed, the number of these observed in the model and the number defined in the Chemical Component Dictionary. Similar counts are reported in the Torsion and Rings columns. '-' means no outliers of that kind were identified.

Mol	Type	Chain	Res	Link	Chirals	Torsions	Rings
3	ECL	1-A	600[B]	4	-	2/13/13/13	0/3/3/3
3	ECL	1-B	600[B]	4	-	3/13/13/13	0/3/3/3
5	ECN	1-B	602[A]	4	-	5/13/13/13	0/3/3/3
4	HEM	1-A	601	3,5,1	-	2/14/54/54	-
4	HEM	1-B	601	3,5,1	-	2/14/54/54	-
5	ECN	1-A	602[A]	4	-	5/13/13/13	0/3/3/3

The worst 5 of 31 bond length outliers are listed below:

Mol	Chain	Res	Type	Atoms	Z	Observed(Å)	Ideal(Å)
4	1-B	601	HEM	C3D-C2D	8.10	1.54	1.36
4	1-A	601	HEM	C3D-C2D	7.31	1.52	1.36
4	1-A	601	HEM	FE-ND	5.62	2.12	1.94
4	1-B	601	HEM	FE-ND	4.64	2.09	1.94
4	1-A	601	HEM	FE-NA	3.92	2.08	1.95

The worst 5 of 30 bond angle outliers are listed below:

Mol	Chain	Res	Type	Atoms	Z	Observed(°)	Ideal(°)
5	1-A	602[A]	ECN	O20-C20-C5	-6.21	104.55	112.05
5	1-B	602[A]	ECN	C14-C5-C20	-5.31	117.30	122.15
4	1-A	601	HEM	C4D-ND-C1D	5.31	111.49	105.21
5	1-B	602[A]	ECN	O20-C20-C5	-5.18	105.80	112.05
4	1-B	601	HEM	C4D-ND-C1D	5.16	111.31	105.21

There are no chirality outliers.

5 of 19 torsion outliers are listed below:

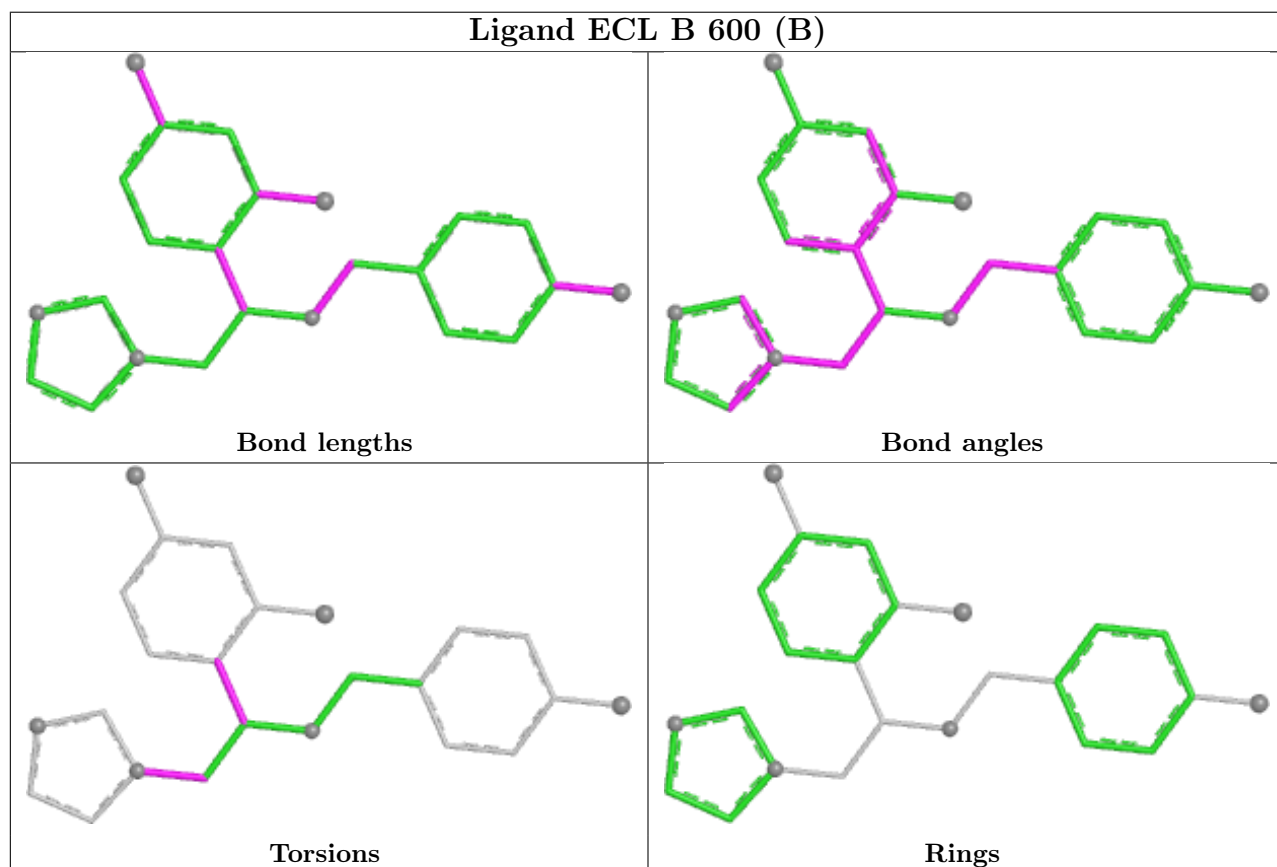
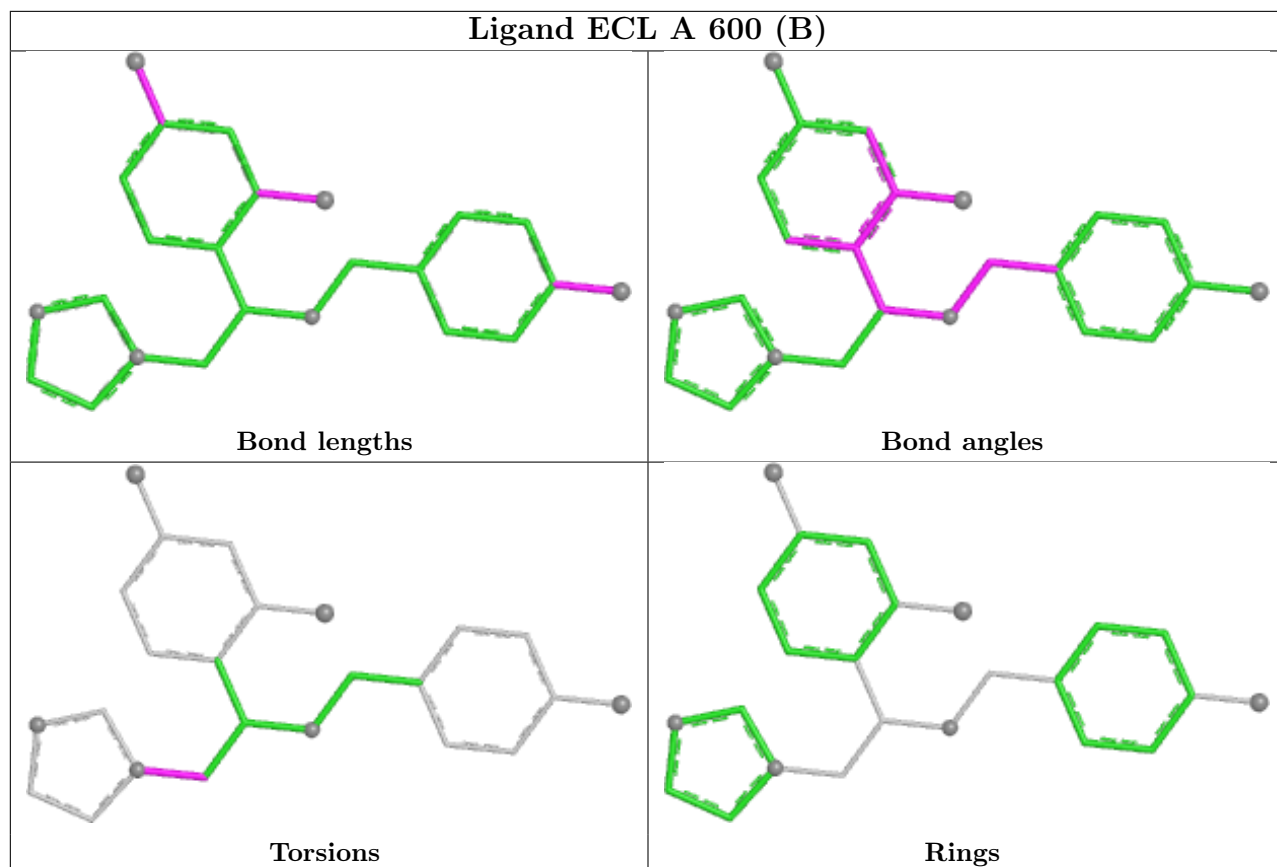
Mol	Chain	Res	Type	Atoms
3	1-A	600[B]	ECL	C20-C19-N1-C3
3	1-A	600[B]	ECL	C20-C19-N1-C7
3	1-B	600[B]	ECL	C20-C19-N1-C3
3	1-B	600[B]	ECL	C20-C19-N1-C7
5	1-A	602[A]	ECN	C19-C20-O20-C8

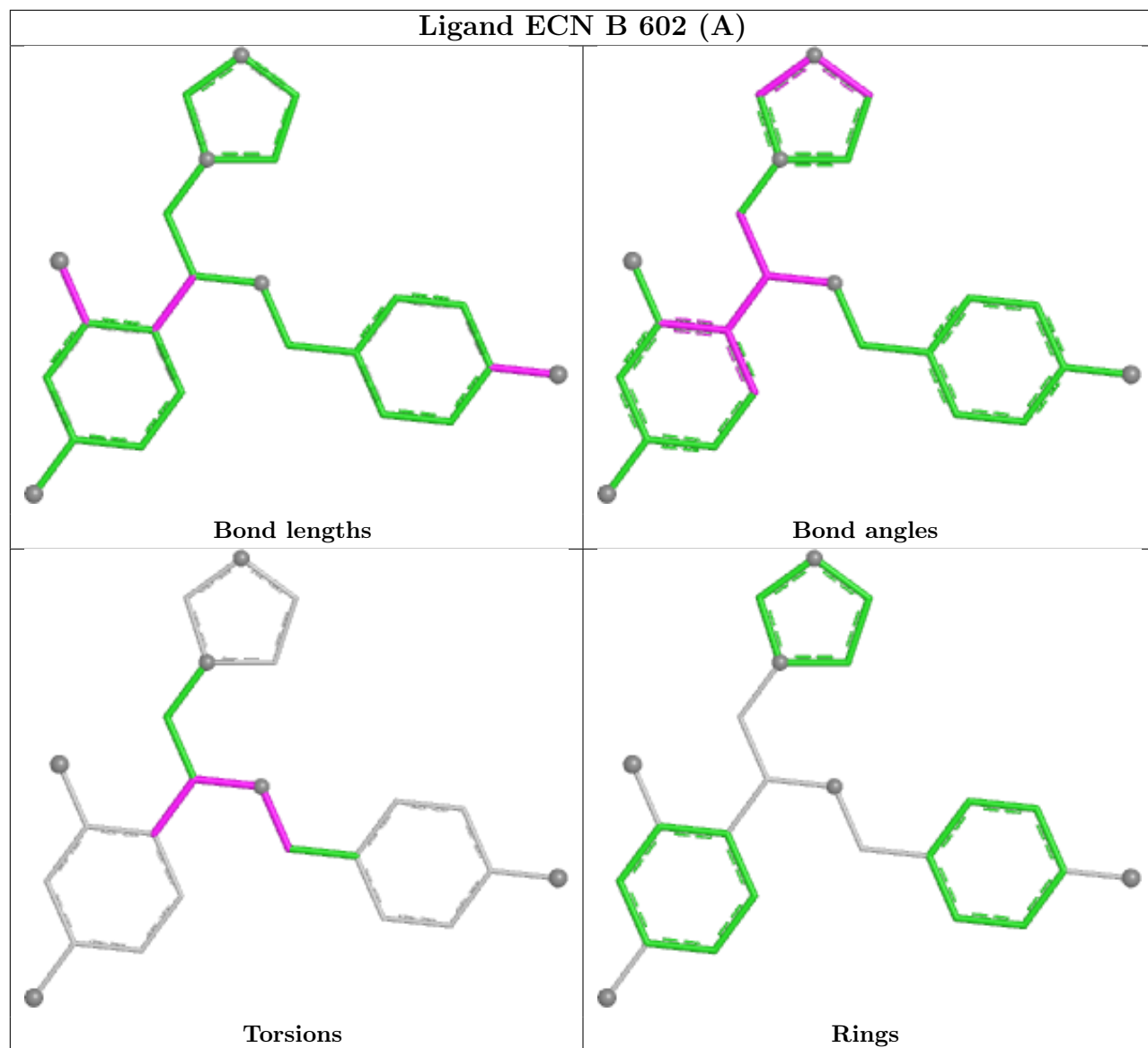
There are no ring outliers.

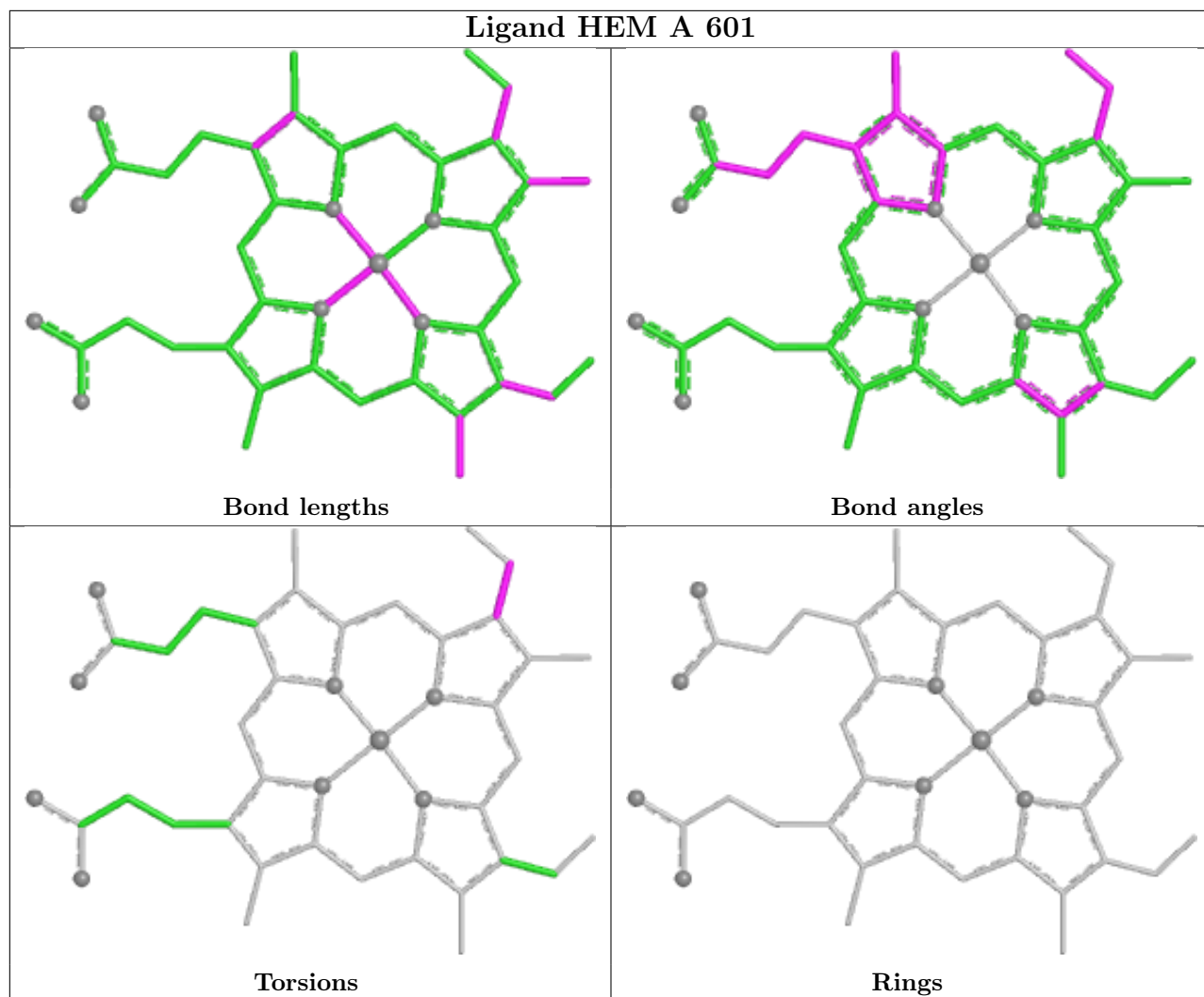
5 monomers are involved in 30 short contacts:

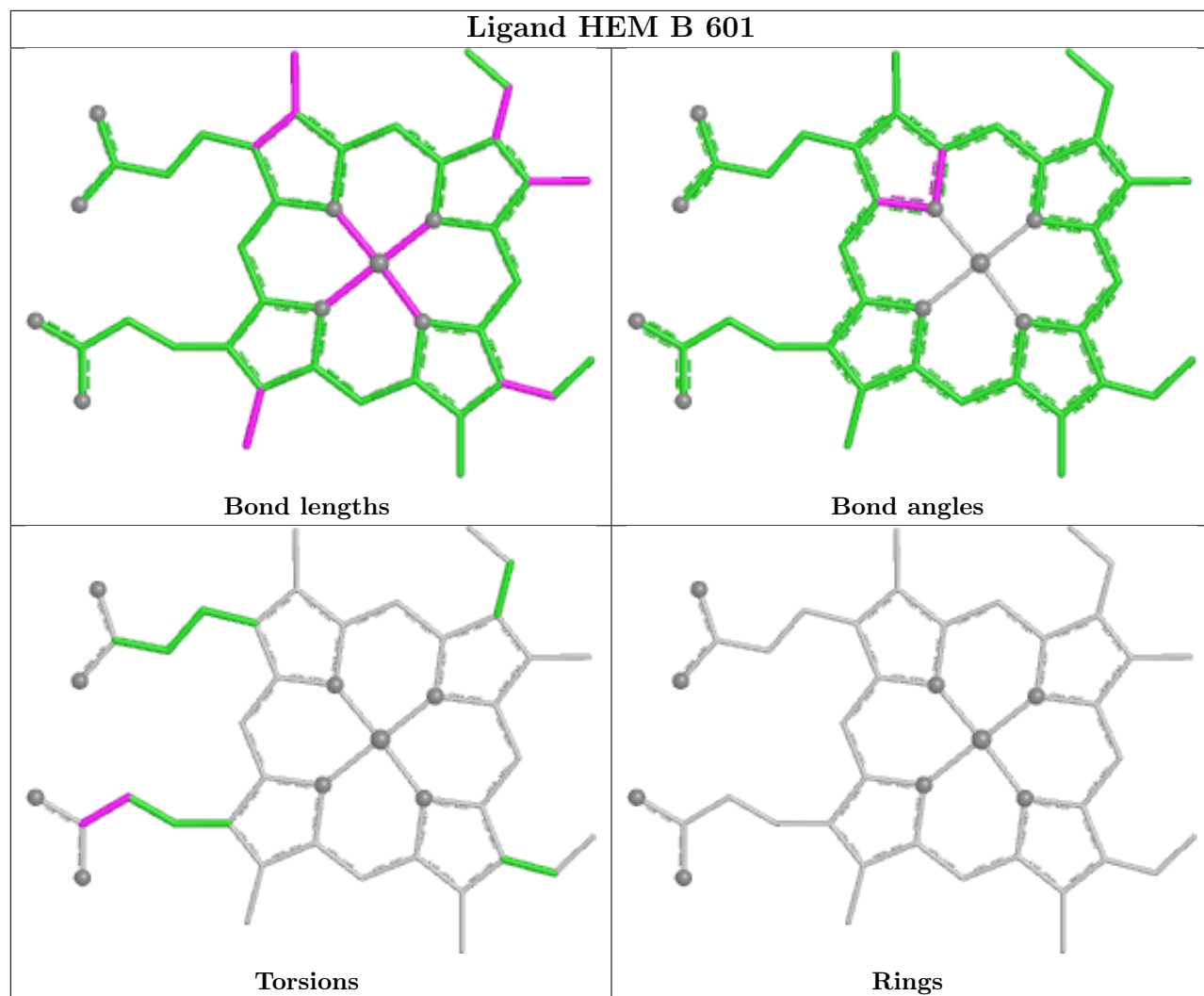
Mol	Chain	Res	Type	Clashes	Symm-Clashes
3	1-B	600[B]	ECL	1	0
5	1-B	602[A]	ECN	7	0
4	1-A	601	HEM	7	0
4	1-B	601	HEM	7	0
5	1-A	602[A]	ECN	8	0

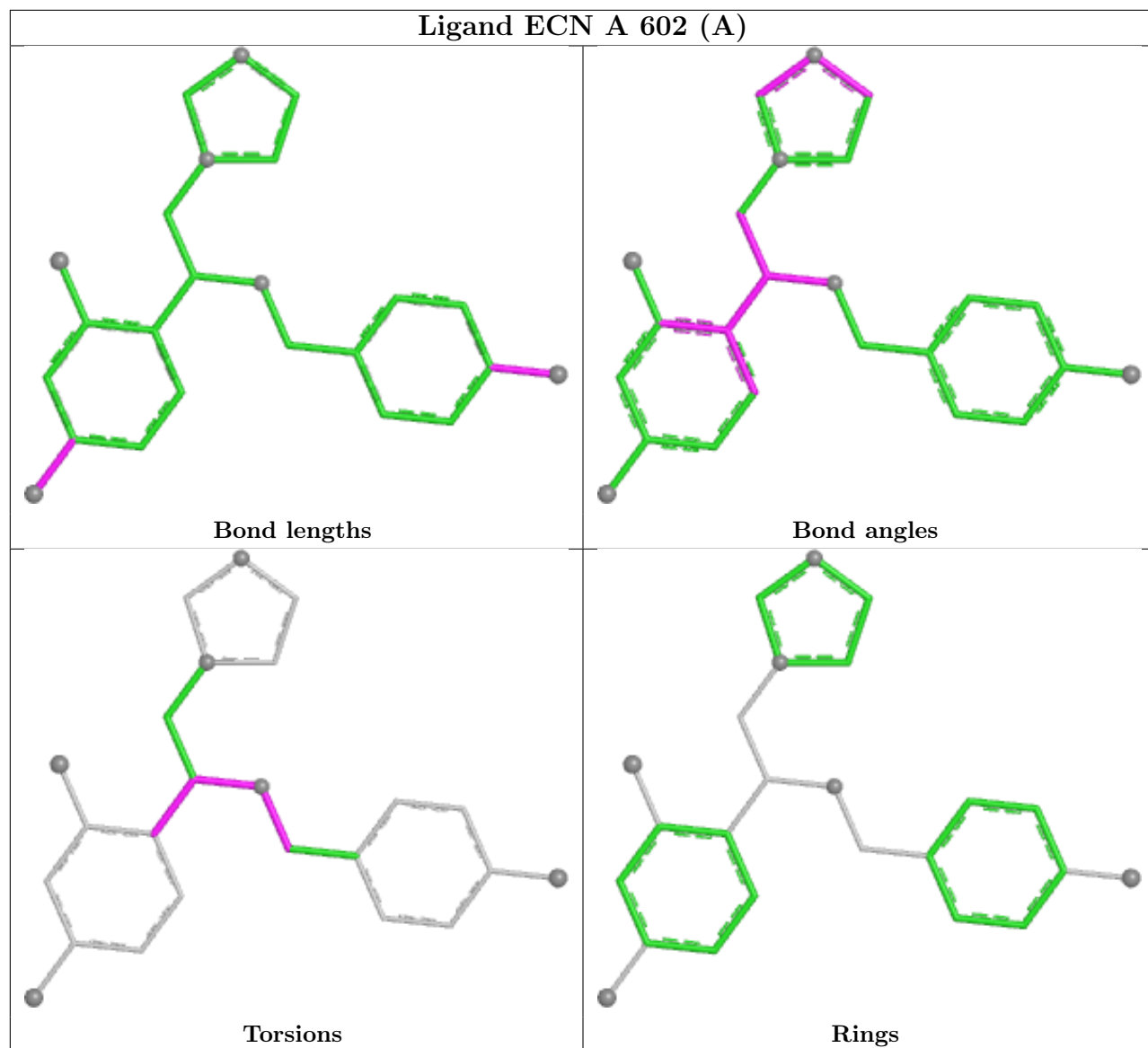
The following is a two-dimensional graphical depiction of Mogul quality analysis of bond lengths, bond angles, torsion angles, and ring geometry for all instances of the Ligand of Interest. In addition, ligands with molecular weight > 250 and outliers as shown on the validation Tables will also be included. For torsion angles, if less than 5% of the Mogul distribution of torsion angles is within 10 degrees of the torsion angle in question, then that torsion angle is considered an outlier. Any bond that is central to one or more torsion angles identified as an outlier by Mogul will be highlighted in the graph. For rings, the root-mean-square deviation (RMSD) between the ring in question and similar rings identified by Mogul is calculated over all ring torsion angles. If the average RMSD is greater than 60 degrees and the minimal RMSD between the ring in question and any Mogul-identified rings is also greater than 60 degrees, then that ring is considered an outlier. The outliers are highlighted in purple. The color gray indicates Mogul did not find sufficient equivalents in the CSD to analyse the geometry.











4.7 Other polymers [\(i\)](#)

There are no such residues in this entry.

4.8 Polymer linkage issues [\(i\)](#)

There are no chain breaks in this entry.

5 Fit of model and data [i](#)

5.1 Protein, DNA and RNA chains [i](#)

In the following table, the column labelled '#RSRZ > 2' contains the number (and percentage) of RSRZ outliers, followed by percent RSRZ outliers for the chain as percentile scores relative to all X-ray entries and entries of similar resolution. The OWAB column contains the minimum, median, 95th percentile and maximum values of the occupancy-weighted average B-factor per residue. The column labelled 'Q < 0.9' lists the number of (and percentage) of residues with an average occupancy less than 0.9.

Mol	Chain	Analysed	<RSRZ>	#RSRZ>2	OWAB(Å ²)	Q<0.9
1	1-A	429/461 (93%)	-0.37	0 100 100	39, 57, 82, 98	0
1	?-A	0/461	-	-	-	-
1	1-B	445/461 (96%)	-0.13	2 (0%) 88 85	47, 71, 95, 106	0
All	All	874/1383 (63%)	-0.24	2 (0%) 91 89	39, 63, 92, 106	0

All (2) RSRZ outliers are listed below:

Mol	Chain	Res	Type	RSRZ
1	1-B	485	THR	2.4
1	1-B	488	ILE	2.2

5.2 Non-standard residues in protein, DNA, RNA chains [i](#)

There are no non-standard protein/DNA/RNA residues in this entry.

5.3 Carbohydrates [i](#)

In the following table, the Atoms column lists the number of modelled atoms in the group and the number defined in the chemical component dictionary. The B-factors column lists the minimum, median, 95th percentile and maximum values of B factors of atoms in the group. The column labelled 'Q < 0.9' lists the number of atoms with occupancy less than 0.9.

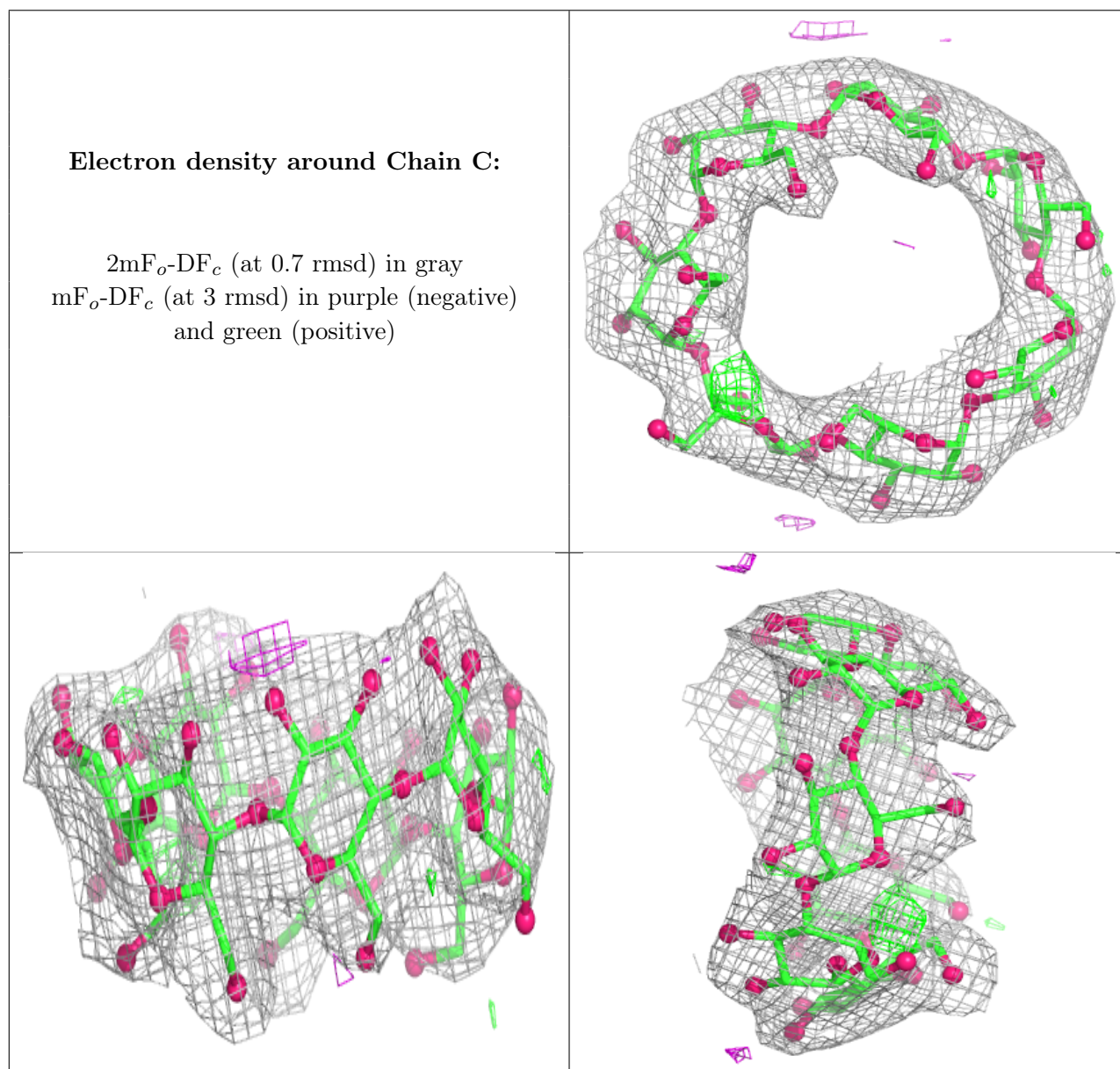
Mol	Type	Chain	Res	Atoms	RSCC	RSR	B-factors(Å ²)	Q<0.9
2	GLC	1-D	2	11/12	0.85	0.11	70,71,72,72	0
2	GLC	1-C	7	11/12	0.87	0.09	80,82,83,83	0
2	GLC	1-C	2	11/12	0.87	0.12	74,75,75,75	0
2	GLC	1-D	3	11/12	0.88	0.11	67,70,71,72	0
2	GLC	1-D	6	11/12	0.88	0.09	67,68,70,71	0
2	GLC	1-D	7	11/12	0.88	0.10	67,68,70,70	0

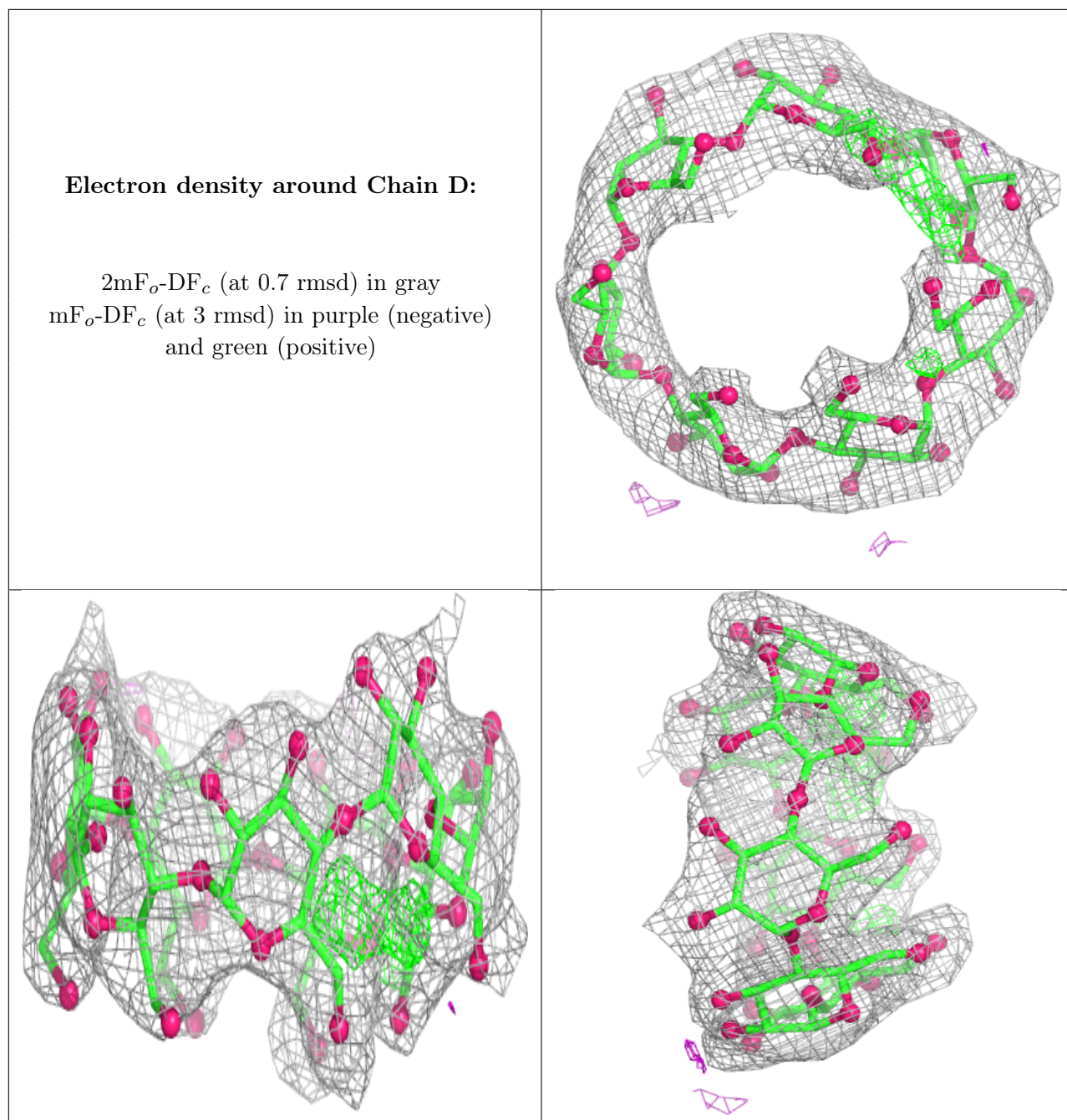
Continued on next page...

Continued from previous page...

Mol	Type	Chain	Res	Atoms	RSCC	RSR	B-factors(Å ²)	Q<0.9
2	GLC	1-C	6	11/12	0.90	0.09	76,79,81,82	0
2	GLC	1-D	1	11/12	0.91	0.09	64,66,67,68	0
2	GLC	1-C	1	11/12	0.92	0.09	74,76,79,79	0
2	GLC	1-C	5	11/12	0.93	0.10	72,74,75,76	0
2	GLC	1-C	3	11/12	0.93	0.09	74,74,75,75	0
2	GLC	1-D	5	11/12	0.94	0.10	58,62,63,66	0
2	GLC	1-D	4	11/12	0.95	0.07	60,63,65,66	0
2	GLC	1-C	4	11/12	0.95	0.08	69,73,73,73	0

The following is a graphical depiction of the model fit to experimental electron density for oligosaccharide. Each fit is shown from different orientation to approximate a three-dimensional view.





5.4 Ligands [i](#)

In the following table, the Atoms column lists the number of modelled atoms in the group and the number defined in the chemical component dictionary. The B-factors column lists the minimum, median, 95th percentile and maximum values of B factors of atoms in the group. The column labelled 'Q < 0.9' lists the number of atoms with occupancy less than 0.9.

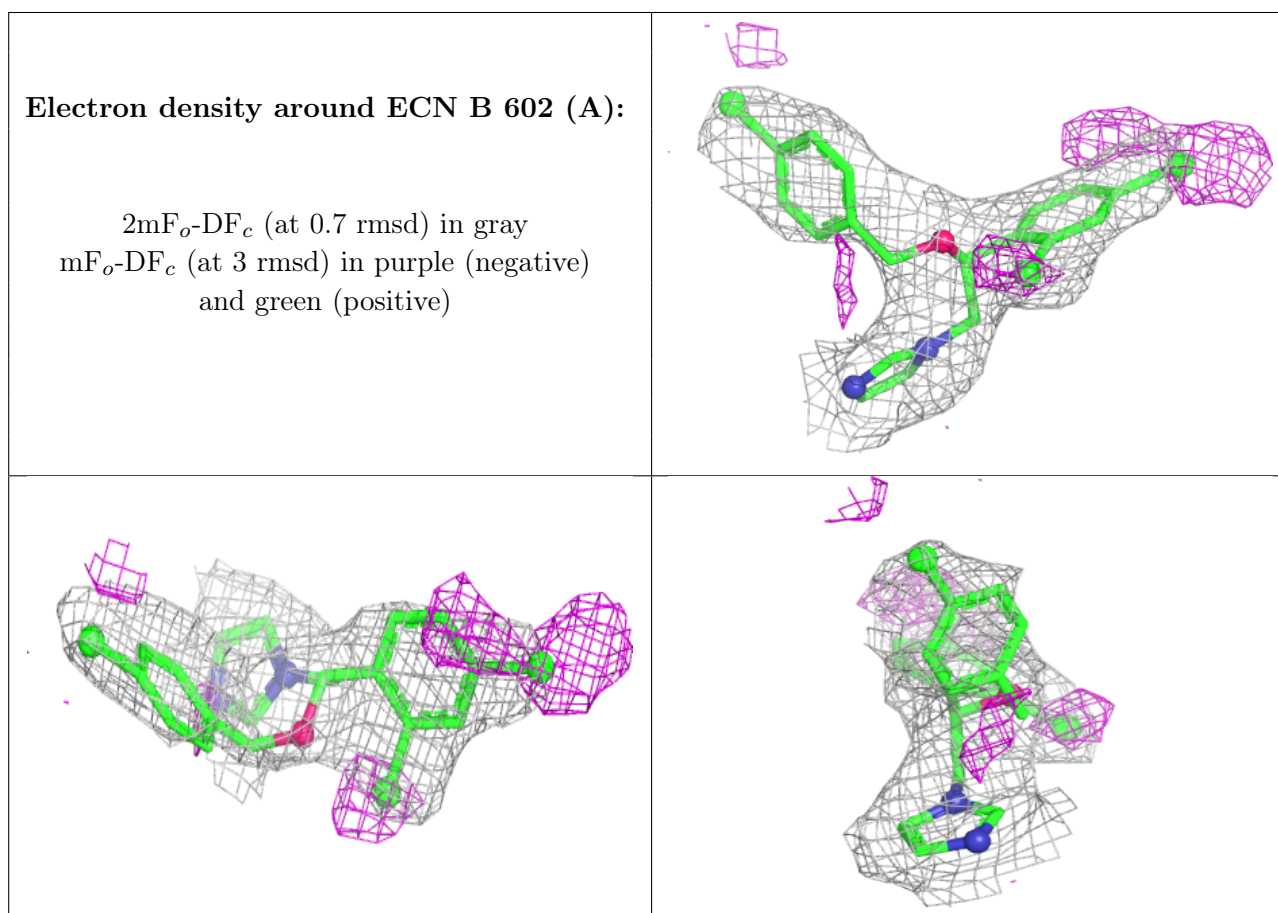
Mol	Type	Chain	Res	Atoms	RSCC	RSR	B-factors(Å ²)	Q < 0.9
5	ECN	1-B	602[A]	24/24	0.85	0.17	74,78,81,82	24
3	ECL	1-B	600[B]	24/24	0.87	0.14	66,69,72,73	24

Continued on next page...

Continued from previous page...

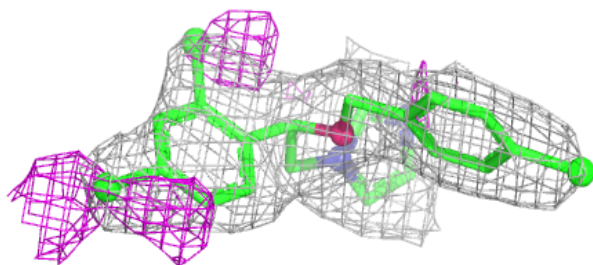
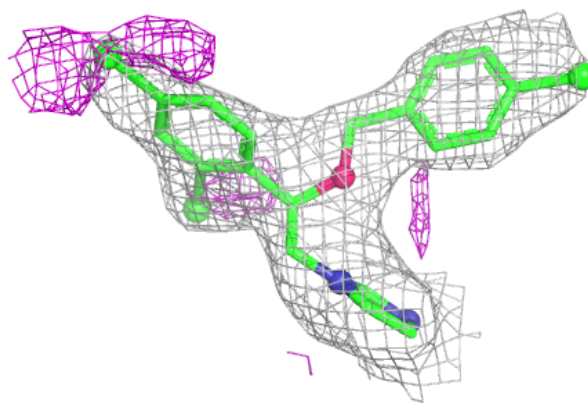
Mol	Type	Chain	Res	Atoms	RSCC	RSR	B-factors(\AA^2)	Q<0.9
5	ECN	1-A	602[A]	24/24	0.89	0.13	54,59,62,65	24
3	ECL	1-A	600[B]	24/24	0.91	0.13	60,63,69,72	24
4	HEM	1-A	601	43/43	0.98	0.06	42,47,52,54	0
4	HEM	1-B	601	43/43	0.98	0.06	47,51,52,54	0

The following is a graphical depiction of the model fit to experimental electron density of all instances of the Ligand of Interest. In addition, ligands with molecular weight > 250 and outliers as shown on the geometry validation Tables will also be included. Each fit is shown from different orientation to approximate a three-dimensional view.

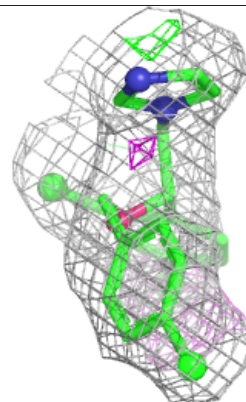
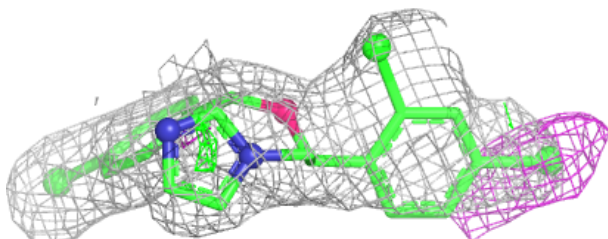
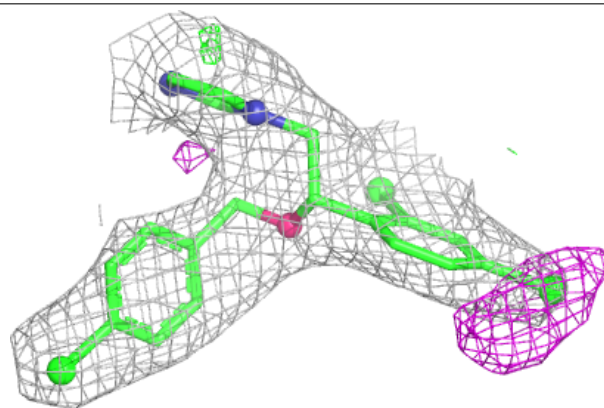


Electron density around ECL B 600 (B):

$2mF_o-DF_c$ (at 0.7 rmsd) in gray
 mF_o-DF_c (at 3 rmsd) in purple (negative)
and green (positive)

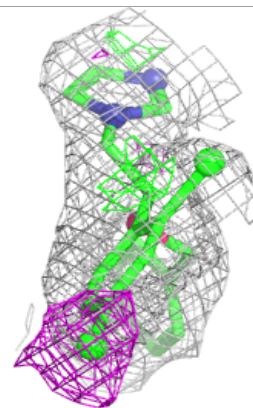
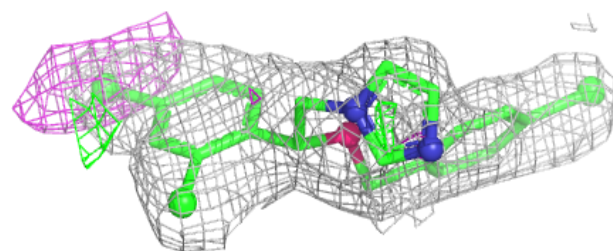
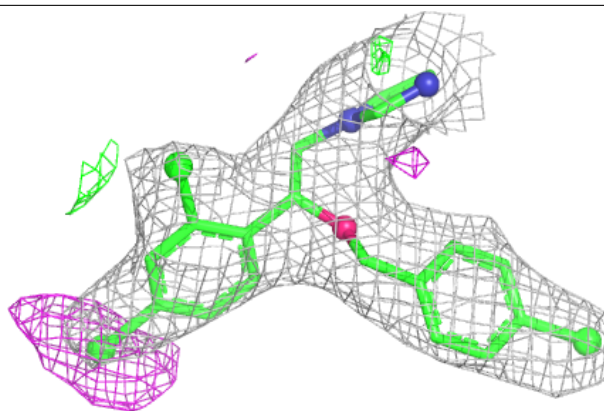
**Electron density around ECN A 602 (A):**

$2mF_o-DF_c$ (at 0.7 rmsd) in gray
 mF_o-DF_c (at 3 rmsd) in purple (negative)
and green (positive)

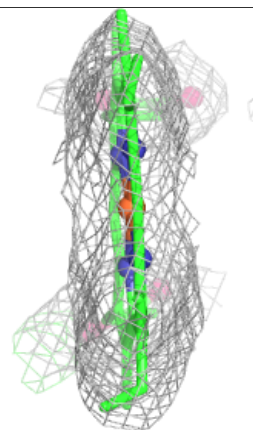
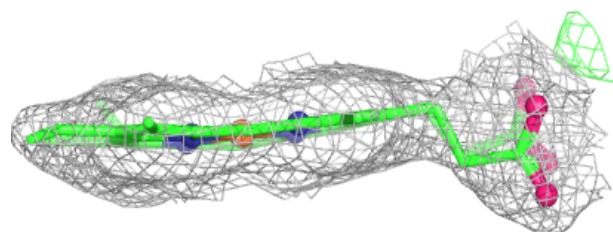
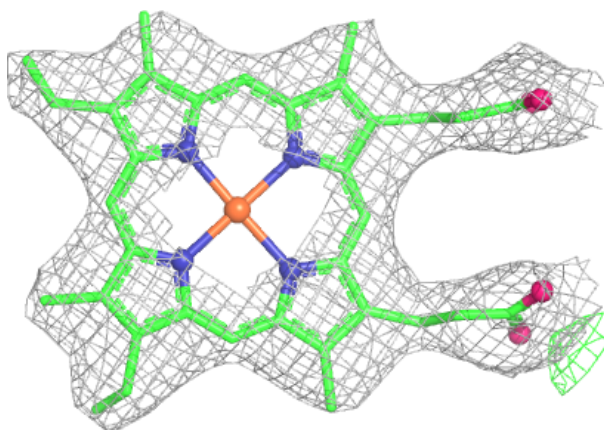


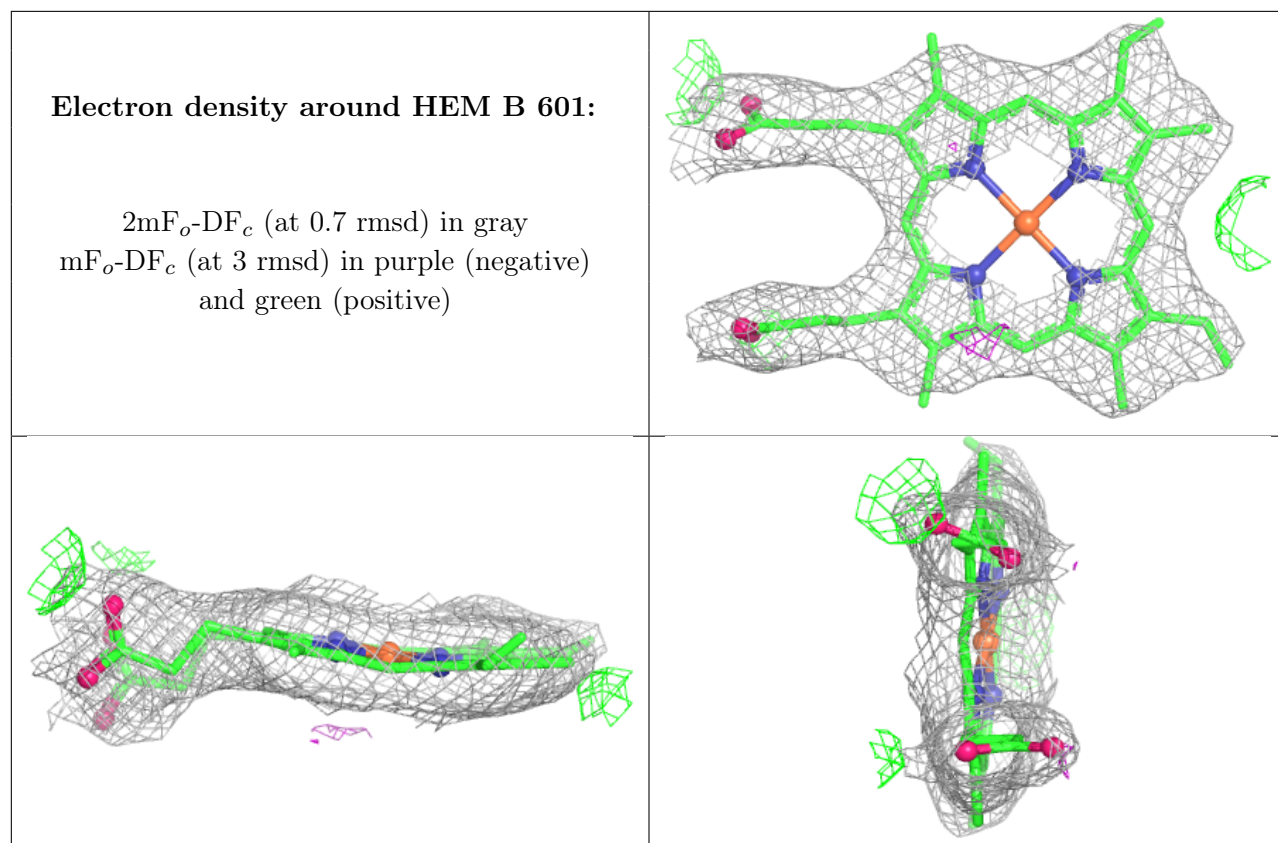
Electron density around ECL A 600 (B):

$2mF_o-DF_c$ (at 0.7 rmsd) in gray
 mF_o-DF_c (at 3 rmsd) in purple (negative)
and green (positive)

**Electron density around HEM A 601:**

$2mF_o-DF_c$ (at 0.7 rmsd) in gray
 mF_o-DF_c (at 3 rmsd) in purple (negative)
and green (positive)





5.5 Other polymers [i](#)

There are no such residues in this entry.