



Full wwPDB X-ray Structure Validation Report ⓘ

Mar 6, 2026 – 03:32 PM UTC

PDB ID : 4K4E / pdb_00004k4e
Title : Co-crystal structure of tnks1 with compound 52 [N 2-(5-chloro-2-methoxyphenyl)-N-[trans-4-(2-oxo-2,3-dihydro-1H-benzimidazol-1-yl)cyclohexyl]glycinamide]
Authors : Huang, X.
Deposited on : 2013-04-12
Resolution : 2.30 Å(reported)

This is a Full wwPDB X-ray Structure Validation Report for a publicly released PDB entry.

We welcome your comments at validation@mail.wwpdb.org

A user guide is available at

<https://www.wwpdb.org/validation/2017/XrayValidationReportHelp>

with specific help available everywhere you see the ⓘ symbol.

The types of validation reports are described at

<http://www.wwpdb.org/validation/2017/FAQs#types>.

The following versions of software and data (see [references ⓘ](#)) were used in the production of this report:

MolProbity : 4-5-2 with Phenix2.0
Mogul : 2022.3.0, CSD as543be (2022)
Xtriage (Phenix) : 2.0
EDS : 3.0
Buster-report : wwPDB partial adaption of 1.1.7 (2018)
Percentile statistics : 20250101.v01 (using entries in the PDB archive January 1st 2025)
CCP4 : 9.0.010 (Gargrove)
Density-Fitness : 1.0.12
Ideal geometry (proteins) : Engh & Huber (2001)
Ideal geometry (DNA, RNA) : Parkinson et al. (1996)
Validation Pipeline (wwPDB-VP) : 2.49

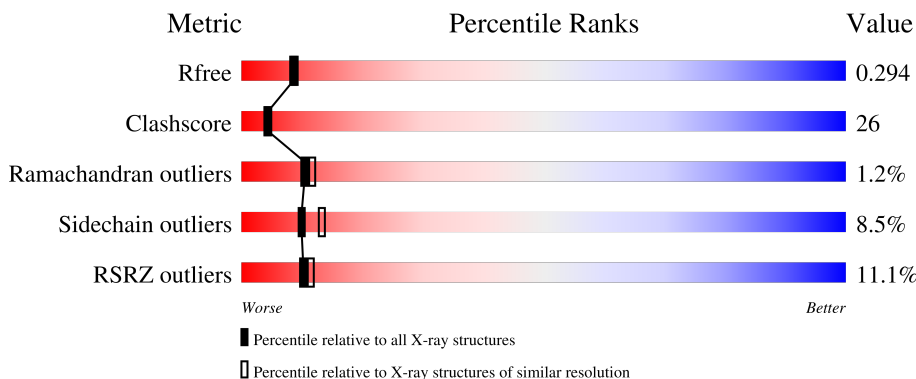
1 Overall quality at a glance

The following experimental techniques were used to determine the structure:

X-RAY DIFFRACTION

The reported resolution of this entry is 2.30 Å.

Percentile scores (ranging between 0-100) for global validation metrics of the entry are shown in the following graphic. The table shows the number of entries on which the scores are based.



Metric	Whole archive (#Entries)	Similar resolution (#Entries, resolution range(Å))
R_{free}	180053	6319 (2.30-2.30)
Clashscore	190562	6919 (2.30-2.30)
Ramachandran outliers	187476	6854 (2.30-2.30)
Sidechain outliers	187428	6854 (2.30-2.30)
RSRZ outliers	180081	6325 (2.30-2.30)

The table below summarises the geometric issues observed across the polymeric chains and their fit to the electron density. The red, orange, yellow and green segments of the lower bar indicate the fraction of residues that contain outliers for ≥ 3 , 2, 1 and 0 types of geometric quality criteria respectively. A grey segment represents the fraction of residues that are not modelled. The numeric value for each fraction is indicated below the corresponding segment, with a dot representing fractions $\leq 5\%$. The upper red bar (where present) indicates the fraction of residues that have poor fit to the electron density. The numeric value is given above the bar.

Mol	Chain	Length	Quality of chain
1	A	217	
1	B	217	

2 Entry composition

There are 4 unique types of molecules in this entry. The entry contains 3469 atoms, of which 0 are hydrogens and 0 are deuteriums.

In the tables below, the ZeroOcc column contains the number of atoms modelled with zero occupancy, the AltConf column contains the number of residues with at least one atom in alternate conformation and the Trace column contains the number of residues modelled with at most 2 atoms.

- Molecule 1 is a protein called Tankyrase-1.

Mol	Chain	Residues	Atoms					ZeroOcc	AltConf	Trace
			Total	C	N	O	S			
1	A	208	1665	1046	303	304	12	0	0	0
1	B	205	1635	1026	301	296	12	0	0	0

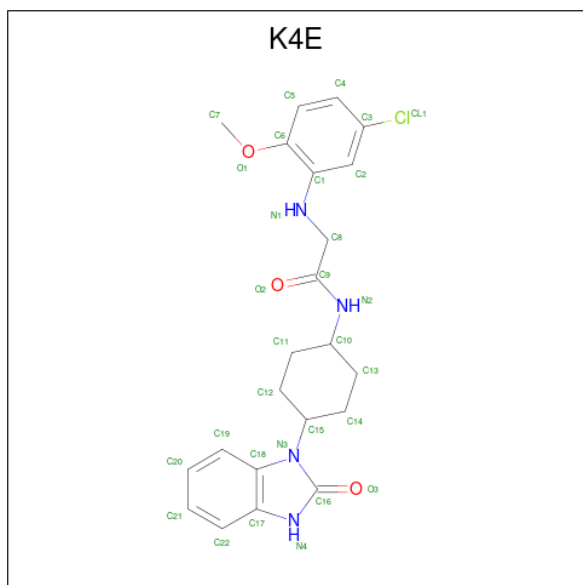
There are 12 discrepancies between the modelled and reference sequences:

Chain	Residue	Modelled	Actual	Comment	Reference
A	1315	HIS	-	expression tag	UNP O95271
A	1316	HIS	-	expression tag	UNP O95271
A	1317	HIS	-	expression tag	UNP O95271
A	1318	HIS	-	expression tag	UNP O95271
A	1319	HIS	-	expression tag	UNP O95271
A	1320	HIS	-	expression tag	UNP O95271
B	1315	HIS	-	expression tag	UNP O95271
B	1316	HIS	-	expression tag	UNP O95271
B	1317	HIS	-	expression tag	UNP O95271
B	1318	HIS	-	expression tag	UNP O95271
B	1319	HIS	-	expression tag	UNP O95271
B	1320	HIS	-	expression tag	UNP O95271

- Molecule 2 is ZINC ION (CCD ID: ZN) (formula: Zn).

Mol	Chain	Residues	Atoms		ZeroOcc	AltConf
2	A	1	Total	Zn	0	0
			1	1		
2	B	1	Total	Zn	0	0
			1	1		

- Molecule 3 is N²-(5-chloro-2-methoxyphenyl)-N-[trans-4-(2-oxo-2,3-dihydro-1H-benzimidazol-1-yl)cyclohexyl]glycinamide (CCD ID: K4E) (formula: C₂₂H₂₅ClN₄O₃).



Mol	Chain	Residues	Atoms				ZeroOcc	AltConf	
			Total	C	Cl	N			O
3	A	1	30	22	1	4	3	0	0
3	B	1	30	22	1	4	3	0	0

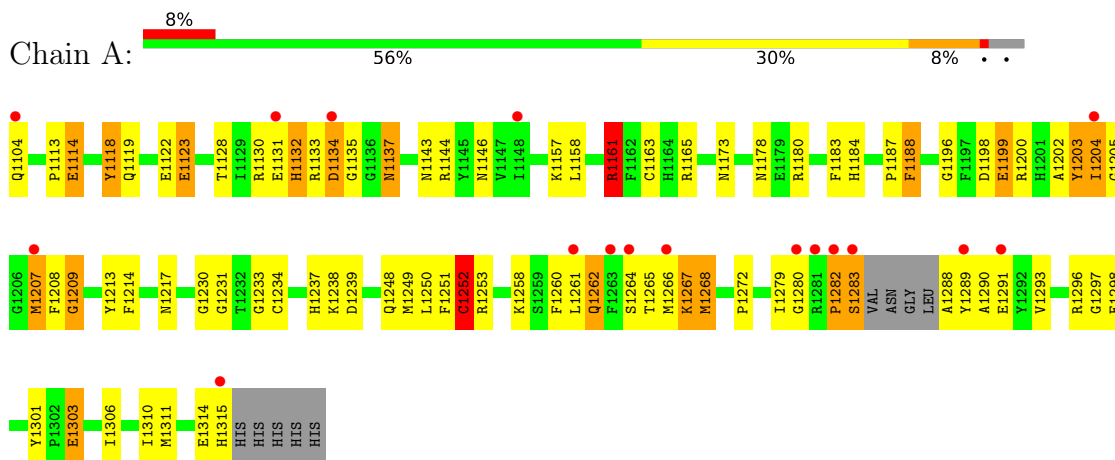
- Molecule 4 is water.

Mol	Chain	Residues	Atoms		ZeroOcc	AltConf
			Total	O		
4	A	64	64	64	0	0
4	B	43	43	43	0	0

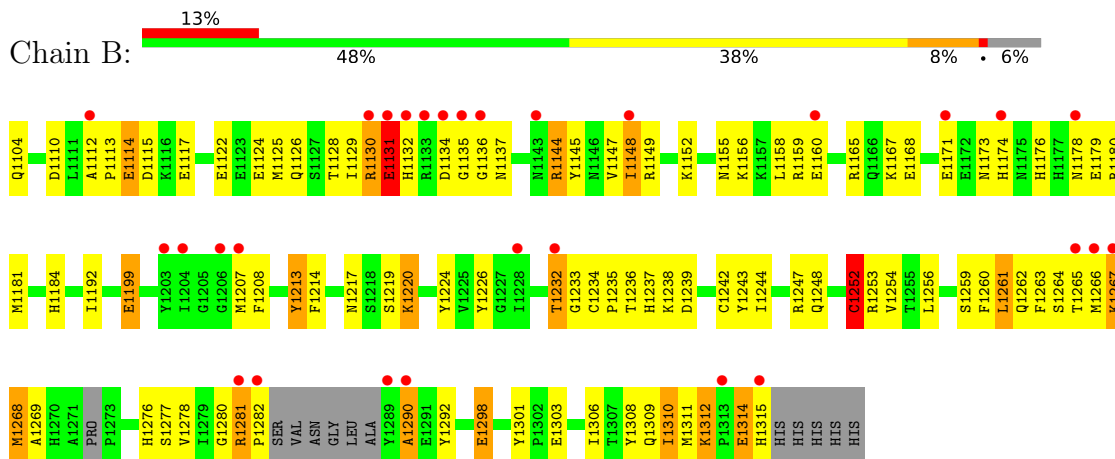
3 Residue-property plots

These plots are drawn for all protein, RNA, DNA and oligosaccharide chains in the entry. The first graphic for a chain summarises the proportions of the various outlier classes displayed in the second graphic. The second graphic shows the sequence view annotated by issues in geometry and electron density. Residues are color-coded according to the number of geometric quality criteria for which they contain at least one outlier: green = 0, yellow = 1, orange = 2 and red = 3 or more. A red dot above a residue indicates a poor fit to the electron density ($RSRZ > 2$). Stretches of 2 or more consecutive residues without any outlier are shown as a green connector. Residues present in the sample, but not in the model, are shown in grey.

- Molecule 1: Tankyrase-1



- Molecule 1: Tankyrase-1



4 Data and refinement statistics

Property	Value	Source
Space group	P 21 21 21	Depositor
Cell constants a, b, c, α , β , γ	42.44Å 73.26Å 149.06Å 90.00° 90.00° 90.00°	Depositor
Resolution (Å)	41.12 – 2.30 41.12 – 2.30	Depositor EDS
% Data completeness (in resolution range)	(Not available) (41.12-2.30) 98.9 (41.12-2.30)	Depositor EDS
R_{merge}	0.10	Depositor
R_{sym}	(Not available)	Depositor
$\langle I/\sigma(I) \rangle$ ¹	2.29 (at 2.29Å)	Xtrriage
Refinement program	CNS	Depositor
R, R_{free}	0.250 , 0.280 0.248 , 0.294	Depositor DCC
R_{free} test set	1094 reflections (5.13%)	wwPDB-VP
Wilson B-factor (Å ²)	42.0	Xtrriage
Anisotropy	0.467	Xtrriage
Bulk solvent k_{sol} (e/Å ³), B_{sol} (Å ²)	0.32 , 34.6	EDS
L-test for twinning ²	$\langle L \rangle = 0.50$, $\langle L^2 \rangle = 0.34$	Xtrriage
Estimated twinning fraction	No twinning to report.	Xtrriage
F_o, F_c correlation	0.93	EDS
Total number of atoms	3469	wwPDB-VP
Average B, all atoms (Å ²)	37.0	wwPDB-VP

Xtrriage's analysis on translational NCS is as follows: *The largest off-origin peak in the Patterson function is 6.44% of the height of the origin peak. No significant pseudotranslation is detected.*

¹Intensities estimated from amplitudes.

²Theoretical values of $\langle |L| \rangle$, $\langle L^2 \rangle$ for acentric reflections are 0.5, 0.333 respectively for untwinned datasets, and 0.375, 0.2 for perfectly twinned datasets.

5 Model quality i

5.1 Standard geometry i

Bond lengths and bond angles in the following residue types are not validated in this section: ZN, K4E

The Z score for a bond length (or angle) is the number of standard deviations the observed value is removed from the expected value. A bond length (or angle) with $|Z| > 5$ is considered an outlier worth inspection. RMSZ is the root-mean-square of all Z scores of the bond lengths (or angles).

Mol	Chain	Bond lengths		Bond angles	
		RMSZ	# Z >5	RMSZ	# Z >5
1	A	1.06	5/1707 (0.3%)	1.18	16/2295 (0.7%)
1	B	0.89	2/1675 (0.1%)	1.03	9/2249 (0.4%)
All	All	0.98	7/3382 (0.2%)	1.11	25/4544 (0.6%)

All (7) bond length outliers are listed below:

Mol	Chain	Res	Type	Atoms	Z	Observed(Å)	Ideal(Å)
1	A	1282	PRO	CA-CB	-11.90	1.37	1.53
1	A	1134	ASP	CA-CB	6.23	1.63	1.53
1	A	1161	ARG	CG-CD	6.03	1.70	1.52
1	A	1268	MET	SD-CE	5.30	1.92	1.79
1	B	1148	ILE	CB-CG1	-5.26	1.43	1.53
1	A	1143	ASN	C-O	-5.12	1.19	1.24
1	B	1131	GLU	CA-CB	-5.10	1.44	1.53

All (25) bond angle outliers are listed below:

Mol	Chain	Res	Type	Atoms	Z	Observed(°)	Ideal(°)
1	B	1136	GLY	N-CA-C	-10.53	100.79	115.32
1	A	1132	HIS	N-CA-C	-8.50	95.90	109.59
1	A	1135	GLY	N-CA-C	-8.19	104.02	115.32
1	A	1282	PRO	N-CA-C	7.96	123.87	111.21
1	A	1264	SER	N-CA-C	-7.85	96.67	108.99
1	A	1209	GLY	N-CA-C	7.45	121.23	111.70
1	A	1203	TYR	N-CA-C	6.95	120.19	108.23
1	A	1118	TYR	N-CA-C	-6.74	103.55	111.03
1	B	1130	ARG	N-CA-C	6.57	118.37	108.46
1	A	1267	LYS	CA-CB-CG	-6.52	101.06	114.10
1	B	1290	ALA	N-CA-C	6.42	119.16	108.96
1	A	1137	ASN	N-CA-C	6.01	118.32	111.11

Continued on next page...

Continued from previous page...

Mol	Chain	Res	Type	Atoms	Z	Observed(°)	Ideal(°)
1	A	1290	ALA	N-CA-C	5.83	119.32	109.76
1	B	1252	CYS	N-CA-C	5.67	118.48	110.14
1	A	1252	CYS	N-CA-C	5.59	118.68	109.85
1	A	1262	GLN	N-CA-C	-5.41	102.03	110.42
1	B	1269	ALA	N-CA-C	-5.33	107.32	113.88
1	A	1303	GLU	N-CA-C	5.33	117.52	111.02
1	A	1251	PHE	N-CA-C	-5.18	98.95	108.02
1	B	1192	ILE	N-CA-C	5.11	115.33	110.42
1	A	1293	VAL	N-CA-C	5.08	115.23	108.11
1	A	1310	ILE	N-CA-C	-5.08	102.54	109.55
1	B	1236	THR	N-CA-C	5.07	117.54	111.71
1	B	1314	GLU	N-CA-C	5.06	118.36	110.32
1	B	1310	ILE	N-CA-C	-5.01	101.20	109.12

There are no chirality outliers.

There are no planarity outliers.

5.2 Too-close contacts [i](#)

In the following table, the Non-H and H(model) columns list the number of non-hydrogen atoms and hydrogen atoms in the chain respectively. The H(added) column lists the number of hydrogen atoms added and optimized by MolProbity. The Clashes column lists the number of clashes within the asymmetric unit, whereas Symm-Clashes lists symmetry-related clashes.

Mol	Chain	Non-H	H(model)	H(added)	Clashes	Symm-Clashes
1	A	1665	0	1582	65	0
1	B	1635	0	1536	109	0
2	A	1	0	0	0	0
2	B	1	0	0	0	0
3	A	30	0	25	2	0
3	B	30	0	25	3	0
4	A	64	0	0	7	0
4	B	43	0	0	13	0
All	All	3469	0	3168	173	0

The all-atom clashscore is defined as the number of clashes found per 1000 atoms (including hydrogen atoms). The all-atom clashscore for this structure is 26.

All (173) close contacts within the same asymmetric unit are listed below, sorted by their clash magnitude.

Atom-1	Atom-2	Interatomic distance (Å)	Clash overlap (Å)
1:A:1131:GLU:HA	4:A:1534:HOH:O	1.65	0.97
1:B:1122:GLU:HG3	1:B:1147:VAL:HG21	1.46	0.97
1:A:1282:PRO:O	1:A:1288:ALA:HB1	1.72	0.90
1:A:1280:GLY:C	1:A:1282:PRO:HD3	2.04	0.82
1:B:1315:HIS:HD2	4:B:1528:HOH:O	1.63	0.81
1:A:1173:ASN:ND2	1:A:1258:LYS:HB2	2.00	0.76
1:B:1167:LYS:O	1:B:1171:GLU:HG3	1.86	0.76
1:B:1262:GLN:OE1	1:B:1264:SER:O	2.05	0.74
1:B:1239:ASP:HB3	1:B:1242:CYS:HB2	1.69	0.74
1:A:1132:HIS:C	1:A:1134:ASP:H	1.94	0.73
1:B:1277:SER:C	4:B:1543:HOH:O	2.31	0.72
1:A:1280:GLY:O	1:A:1282:PRO:HD3	1.89	0.72
1:B:1262:GLN:HG3	1:B:1266:MET:SD	2.29	0.72
1:A:1282:PRO:O	1:A:1288:ALA:CB	2.37	0.71
1:A:1178:ASN:ND2	1:B:1176:HIS:NE2	2.38	0.71
1:B:1207:MET:SD	1:B:1282:PRO:HB3	2.31	0.70
1:B:1281:ARG:HH11	1:B:1281:ARG:HB3	1.56	0.70
1:A:1260:PHE:HE2	1:A:1262:GLN:NE2	1.88	0.70
1:B:1134:ASP:CG	1:B:1137:ASN:HB3	2.17	0.69
1:B:1144:ARG:HD2	1:B:1311:MET:SD	2.33	0.69
1:B:1132:HIS:CE1	1:B:1220:LYS:NZ	2.62	0.67
1:A:1266:MET:HE2	1:A:1268:MET:HE2	1.77	0.67
1:B:1267:LYS:O	1:B:1268:MET:HB2	1.93	0.66
1:A:1261:LEU:HD23	1:B:1261:LEU:HD11	1.77	0.66
1:B:1114:GLU:OE1	1:B:1114:GLU:N	2.29	0.65
1:B:1277:SER:O	4:B:1543:HOH:O	2.15	0.65
1:A:1208:PHE:CE2	1:A:1280:GLY:HA3	2.32	0.65
1:A:1253:ARG:HG3	1:A:1303:GLU:HG3	1.79	0.64
1:B:1278:VAL:HA	4:B:1543:HOH:O	1.95	0.64
1:B:1178:ASN:ND2	1:B:1256:LEU:HB2	2.13	0.64
1:B:1276:HIS:HA	4:B:1502:HOH:O	1.99	0.63
1:B:1117:GLU:CD	1:B:1152:LYS:HZ1	2.07	0.63
1:A:1248:GLN:HA	1:A:1306:ILE:O	1.98	0.63
1:B:1264:SER:O	1:B:1265:THR:C	2.42	0.63
1:B:1232:THR:O	1:B:1232:THR:HG23	1.98	0.62
1:A:1207:MET:HE1	1:A:1282:PRO:HB3	1.80	0.62
1:A:1137:ASN:ND2	4:A:1530:HOH:O	2.31	0.62
1:B:1237:HIS:O	1:B:1238:LYS:C	2.42	0.61
1:A:1234:CYS:SG	1:A:1237:HIS:HB2	2.41	0.60
1:B:1159:ARG:NH2	1:B:1303:GLU:OE2	2.32	0.60
1:A:1208:PHE:CZ	1:A:1280:GLY:HA3	2.37	0.60
1:B:1132:HIS:HE1	1:B:1220:LYS:NZ	1.98	0.59

Continued on next page...

Continued from previous page...

Atom-1	Atom-2	Interatomic distance (Å)	Clash overlap (Å)
1:B:1224:TYR:HB3	3:B:1402:K4E:CL1	2.39	0.59
1:A:1282:PRO:HD2	1:A:1289:TYR:O	2.03	0.59
1:B:1243:TYR:CE2	1:B:1312:LYS:HG2	2.38	0.58
1:B:1132:HIS:CE1	1:B:1220:LYS:HZ2	2.22	0.58
1:B:1155:ASN:CG	1:B:1158:LEU:HD13	2.28	0.58
1:A:1252:CYS:HB3	1:A:1301:TYR:O	2.02	0.58
1:B:1243:TYR:CD2	1:B:1312:LYS:HG2	2.38	0.58
1:A:1132:HIS:C	1:A:1134:ASP:N	2.62	0.57
1:B:1122:GLU:HG3	1:B:1147:VAL:CG2	2.29	0.57
1:B:1248:GLN:HA	1:B:1306:ILE:O	2.05	0.57
1:A:1205:GLY:O	1:A:1267:LYS:NZ	2.31	0.56
1:A:1207:MET:HA	1:A:1267:LYS:HZ3	1.70	0.56
1:B:1259:SER:HA	4:B:1543:HOH:O	2.04	0.56
1:B:1156:LYS:O	1:B:1160:GLU:HG3	2.04	0.56
1:A:1114:GLU:H	1:A:1114:GLU:CD	2.14	0.55
1:A:1163:CYS:SG	4:A:1538:HOH:O	2.58	0.55
1:B:1184:HIS:HB2	1:B:1214:PHE:CD1	2.41	0.55
1:B:1207:MET:O	1:B:1265:THR:HA	2.06	0.55
1:A:1199:GLU:HG2	1:A:1296:ARG:HA	1.88	0.55
1:A:1132:HIS:O	1:A:1134:ASP:N	2.34	0.55
1:A:1213:TYR:CD2	3:A:1402:K4E:H9	2.42	0.55
1:A:1283:SER:HA	1:A:1288:ALA:CB	2.37	0.55
1:B:1220:LYS:HZ2	1:B:1220:LYS:HA	1.71	0.54
1:B:1266:MET:O	1:B:1267:LYS:O	2.25	0.54
1:B:1266:MET:CG	1:B:1268:MET:HE2	2.38	0.54
1:A:1203:TYR:CE2	1:A:1205:GLY:HA3	2.43	0.54
1:B:1117:GLU:CD	1:B:1152:LYS:NZ	2.65	0.53
1:B:1155:ASN:ND2	1:B:1158:LEU:HD13	2.23	0.53
1:B:1252:CYS:HB3	1:B:1301:TYR:O	2.08	0.53
1:B:1260:PHE:N	4:B:1543:HOH:O	2.32	0.53
1:B:1266:MET:SD	1:B:1268:MET:HE2	2.49	0.53
1:A:1198:ASP:OD1	1:A:1200:ARG:HB2	2.10	0.51
1:A:1262:GLN:OE1	1:A:1266:MET:HB2	2.10	0.51
1:A:1130:ARG:HH11	1:A:1217:ASN:ND2	2.09	0.51
1:A:1260:PHE:HE2	1:A:1262:GLN:HE21	1.58	0.51
1:B:1173:ASN:O	1:B:1174:HIS:C	2.53	0.51
1:B:1178:ASN:CG	1:B:1178:ASN:O	2.55	0.51
1:B:1208:PHE:CE2	1:B:1280:GLY:HA3	2.46	0.50
1:B:1278:VAL:CA	4:B:1543:HOH:O	2.55	0.50
1:B:1244:ILE:O	1:B:1309:GLN:NE2	2.41	0.50
1:A:1180:ARG:HD3	4:A:1551:HOH:O	2.11	0.50

Continued on next page...

Continued from previous page...

Atom-1	Atom-2	Interatomic distance (Å)	Clash overlap (Å)
1:B:1234:CYS:N	1:B:1239:ASP:O	2.32	0.49
1:B:1220:LYS:NZ	1:B:1220:LYS:HB2	2.28	0.49
1:B:1144:ARG:HD3	1:B:1145:TYR:O	2.13	0.49
1:B:1262:GLN:CG	1:B:1266:MET:SD	2.99	0.48
1:B:1173:ASN:ND2	1:B:1176:HIS:HB2	2.27	0.48
1:A:1165:ARG:HG2	1:A:1298:GLU:HG2	1.95	0.48
1:B:1160:GLU:HB3	4:B:1526:HOH:O	2.13	0.48
1:B:1117:GLU:OE2	1:B:1152:LYS:NZ	2.47	0.48
1:A:1130:ARG:HH11	1:A:1217:ASN:HD22	1.62	0.48
1:B:1199:GLU:CD	1:B:1199:GLU:H	2.21	0.48
1:B:1298:GLU:H	1:B:1298:GLU:CD	2.21	0.48
1:B:1110:ASP:OD1	1:B:1149:ARG:NE	2.42	0.48
1:A:1237:HIS:O	1:A:1238:LYS:C	2.57	0.47
3:A:1402:K4E:H17	3:A:1402:K4E:H7	1.95	0.47
1:B:1261:LEU:HD12	1:B:1261:LEU:N	2.29	0.47
1:B:1220:LYS:HB2	1:B:1220:LYS:HZ3	1.79	0.47
1:A:1180:ARG:CD	4:A:1551:HOH:O	2.62	0.47
1:B:1126:GLN:O	1:B:1129:ILE:HG13	2.15	0.47
1:A:1187:PRO:HD2	1:A:1188:PHE:CE1	2.50	0.47
1:B:1314:GLU:O	4:B:1523:HOH:O	2.20	0.46
1:A:1178:ASN:ND2	1:B:1176:HIS:CE1	2.83	0.46
1:B:1253:ARG:NE	1:B:1303:GLU:OE1	2.48	0.46
1:B:1117:GLU:OE1	1:B:1152:LYS:NZ	2.48	0.46
1:A:1184:HIS:HB2	1:A:1214:PHE:CD1	2.50	0.46
1:B:1263:PHE:HE2	1:B:1281:ARG:CZ	2.28	0.46
1:B:1124:GLU:O	1:B:1128:THR:HG23	2.16	0.46
1:B:1314:GLU:O	1:B:1315:HIS:CB	2.65	0.45
1:B:1179:GLU:OE2	1:B:1253:ARG:NH1	2.48	0.45
1:B:1233:GLY:HA3	1:B:1239:ASP:C	2.41	0.45
1:B:1213:TYR:CD1	1:B:1213:TYR:N	2.84	0.45
1:B:1180:ARG:NH1	1:B:1292:TYR:OH	2.48	0.45
1:B:1128:THR:HB	1:B:1217:ASN:HA	1.99	0.45
1:B:1234:CYS:SG	1:B:1237:HIS:HB2	2.56	0.45
1:A:1183:PHE:HA	1:A:1250:LEU:O	2.17	0.45
1:B:1266:MET:O	1:B:1267:LYS:C	2.60	0.45
3:B:1402:K4E:C1	3:B:1402:K4E:H10	2.29	0.44
1:A:1131:GLU:HG3	4:A:1534:HOH:O	2.15	0.44
1:A:1279:ILE:HA	1:A:1291:GLU:O	2.17	0.44
1:B:1132:HIS:HE1	1:B:1220:LYS:HZ2	1.61	0.44
1:B:1148:ILE:HG22	1:B:1148:ILE:O	2.17	0.44
1:B:1220:LYS:O	1:B:1220:LYS:HD3	2.18	0.44

Continued on next page...

Continued from previous page...

Atom-1	Atom-2	Interatomic distance (Å)	Clash overlap (Å)
1:B:1259:SER:CA	4:B:1543:HOH:O	2.62	0.44
1:A:1203:TYR:O	1:A:1204:ILE:C	2.60	0.44
1:B:1132:HIS:CE1	1:B:1220:LYS:HZ1	2.34	0.44
1:A:1199:GLU:H	1:A:1199:GLU:CD	2.24	0.44
1:A:1199:GLU:HG3	1:A:1297:GLY:H	1.82	0.44
1:B:1314:GLU:O	1:B:1315:HIS:CG	2.70	0.44
1:B:1117:GLU:OE2	1:B:1152:LYS:CE	2.66	0.44
1:B:1232:THR:O	1:B:1232:THR:CG2	2.65	0.44
1:A:1158:LEU:HD21	1:A:1196:GLY:HA3	1.99	0.43
1:B:1159:ARG:NH2	1:B:1303:GLU:CD	2.75	0.43
1:B:1220:LYS:NZ	1:B:1220:LYS:CB	2.81	0.43
1:B:1113:PRO:HB2	1:B:1114:GLU:OE1	2.17	0.43
1:B:1261:LEU:N	1:B:1261:LEU:CD1	2.81	0.43
1:A:1165:ARG:HB2	1:A:1298:GLU:HG3	2.00	0.43
1:B:1159:ARG:HH22	1:B:1303:GLU:CD	2.25	0.43
1:A:1146:ASN:HB2	1:A:1311:MET:SD	2.58	0.43
1:A:1119:GLN:O	1:A:1123:GLU:HB2	2.18	0.43
1:A:1260:PHE:CD2	1:A:1272:PRO:HG2	2.54	0.42
1:B:1129:ILE:HG22	1:B:1130:ARG:N	2.34	0.42
1:B:1278:VAL:N	4:B:1543:HOH:O	2.49	0.42
1:A:1157:LYS:O	1:A:1161:ARG:HG2	2.18	0.42
1:A:1213:TYR:CD2	1:A:1213:TYR:N	2.86	0.42
1:A:1283:SER:HA	1:A:1288:ALA:HB2	2.00	0.42
1:B:1179:GLU:HA	1:B:1254:VAL:O	2.20	0.42
1:B:1131:GLU:H	1:B:1131:GLU:HG3	1.32	0.42
1:A:1180:ARG:NE	4:A:1551:HOH:O	2.52	0.42
1:B:1114:GLU:CD	1:B:1114:GLU:H	2.25	0.42
1:B:1125:MET:SD	1:B:1306:ILE:HG21	2.59	0.42
1:A:1199:GLU:O	1:A:1202:ALA:HB3	2.20	0.42
1:B:1165:ARG:HA	1:B:1168:GLU:HG3	2.01	0.41
1:B:1112:ALA:HA	1:B:1113:PRO:HD3	1.93	0.41
1:B:1280:GLY:O	1:B:1290:ALA:HA	2.20	0.41
1:B:1247:ARG:HB2	1:B:1308:TYR:CZ	2.56	0.41
1:B:1266:MET:HE3	1:B:1266:MET:HB2	1.95	0.41
1:A:1262:GLN:NE2	1:A:1268:MET:HE1	2.36	0.41
1:A:1113:PRO:HA	1:A:1118:TYR:CG	2.54	0.41
1:B:1115:ASP:OD1	1:B:1115:ASP:C	2.63	0.41
1:A:1233:GLY:HA3	1:A:1239:ASP:C	2.45	0.41
1:B:1148:ILE:HG21	1:B:1148:ILE:HD13	1.78	0.41
1:B:1213:TYR:CD1	3:B:1402:K4E:H9	2.56	0.41
1:A:1128:THR:HA	1:A:1130:ARG:NH1	2.36	0.41

Continued on next page...

Continued from previous page...

Atom-1	Atom-2	Interatomic distance (Å)	Clash overlap (Å)
1:B:1129:ILE:HG23	1:B:1219:SER:HB3	2.03	0.41
1:A:1128:THR:HB	1:A:1217:ASN:HA	2.03	0.41
1:A:1209:GLY:HA3	1:A:1268:MET:O	2.21	0.40
1:B:1226:TYR:CE1	1:B:1235:PRO:HD3	2.57	0.40
1:A:1230:GLY:O	1:A:1231:GLY:C	2.65	0.40
1:B:1312:LYS:CE	4:B:1516:HOH:O	2.69	0.40
1:B:1181:MET:HA	1:B:1252:CYS:O	2.21	0.40
1:B:1243:TYR:CD1	1:B:1310:ILE:HG13	2.57	0.40

There are no symmetry-related clashes.

5.3 Torsion angles [i](#)

5.3.1 Protein backbone [i](#)

In the following table, the Percentiles column shows the percent Ramachandran outliers of the chain as a percentile score with respect to all X-ray entries followed by that with respect to entries of similar resolution.

The Analysed column shows the number of residues for which the backbone conformation was analysed, and the total number of residues.

Mol	Chain	Analysed	Favoured	Allowed	Outliers	Percentiles	
1	A	204/217 (94%)	189 (93%)	14 (7%)	1 (0%)	24	31
1	B	199/217 (92%)	182 (92%)	13 (6%)	4 (2%)	6	5
All	All	403/434 (93%)	371 (92%)	27 (7%)	5 (1%)	10	12

All (5) Ramachandran outliers are listed below:

Mol	Chain	Res	Type
1	B	1267	LYS
1	B	1135	GLY
1	A	1133	ARG
1	B	1131	GLU
1	B	1268	MET

5.3.2 Protein sidechains [i](#)

In the following table, the Percentiles column shows the percent sidechain outliers of the chain as a percentile score with respect to all X-ray entries followed by that with respect to entries of similar resolution.

The Analysed column shows the number of residues for which the sidechain conformation was analysed, and the total number of residues.

Mol	Chain	Analysed	Rotameric	Outliers	Percentiles	
1	A	174/185 (94%)	158 (91%)	16 (9%)	8	11
1	B	168/185 (91%)	155 (92%)	13 (8%)	12	16
All	All	342/370 (92%)	313 (92%)	29 (8%)	10	13

All (29) residues with a non-rotameric sidechain are listed below:

Mol	Chain	Res	Type
1	A	1104	GLN
1	A	1114	GLU
1	A	1122	GLU
1	A	1123	GLU
1	A	1144	ARG
1	A	1161	ARG
1	A	1188	PHE
1	A	1199	GLU
1	A	1204	ILE
1	A	1207	MET
1	A	1249	MET
1	A	1252	CYS
1	A	1265	THR
1	A	1283	SER
1	A	1314	GLU
1	A	1315	HIS
1	B	1104	GLN
1	B	1114	GLU
1	B	1131	GLU
1	B	1144	ARG
1	B	1199	GLU
1	B	1213	TYR
1	B	1220	LYS
1	B	1232	THR
1	B	1252	CYS
1	B	1261	LEU
1	B	1281	ARG

Continued on next page...

Continued from previous page...

Mol	Chain	Res	Type
1	B	1298	GLU
1	B	1312	LYS

Sometimes sidechains can be flipped to improve hydrogen bonding and reduce clashes. All (14) such sidechains are listed below:

Mol	Chain	Res	Type
1	A	1164	HIS
1	A	1166	GLN
1	A	1176	HIS
1	A	1178	ASN
1	A	1217	ASN
1	A	1262	GLN
1	A	1270	HIS
1	B	1104	GLN
1	B	1132	HIS
1	B	1174	HIS
1	B	1190	ASN
1	B	1194	HIS
1	B	1246	HIS
1	B	1275	HIS

5.3.3 RNA [i](#)

There are no RNA molecules in this entry.

5.4 Non-standard residues in protein, DNA, RNA chains [i](#)

There are no non-standard protein/DNA/RNA residues in this entry.

5.5 Carbohydrates [i](#)

There are no oligosaccharides in this entry.

5.6 Ligand geometry [i](#)

Of 4 ligands modelled in this entry, 2 are monoatomic - leaving 2 for Mogul analysis.

In the following table, the Counts columns list the number of bonds (or angles) for which Mogul statistics could be retrieved, the number of bonds (or angles) that are observed in the model and

the number of bonds (or angles) that are defined in the Chemical Component Dictionary. The Link column lists molecule types, if any, to which the group is linked. The Z score for a bond length (or angle) is the number of standard deviations the observed value is removed from the expected value. A bond length (or angle) with $|Z| > 2$ is considered an outlier worth inspection. RMSZ is the root-mean-square of all Z scores of the bond lengths (or angles).

Mol	Type	Chain	Res	Link	Bond lengths			Bond angles		
					Counts	RMSZ	# Z > 2	Counts	RMSZ	# Z > 2
3	K4E	A	1402	-	33,33,33	2.33	18 (54%)	46,46,46	2.62	16 (34%)
3	K4E	B	1402	-	33,33,33	2.30	13 (39%)	46,46,46	2.51	16 (34%)

In the following table, the Chirals column lists the number of chiral outliers, the number of chiral centers analysed, the number of these observed in the model and the number defined in the Chemical Component Dictionary. Similar counts are reported in the Torsion and Rings columns. '-' means no outliers of that kind were identified.

Mol	Type	Chain	Res	Link	Chirals	Torsions	Rings
3	K4E	A	1402	-	-	2/15/25/25	0/4/4/4
3	K4E	B	1402	-	-	0/15/25/25	0/4/4/4

All (31) bond length outliers are listed below:

Mol	Chain	Res	Type	Atoms	Z	Observed(Å)	Ideal(Å)
3	B	1402	K4E	O1-C6	4.67	1.44	1.37
3	A	1402	K4E	C2-C3	4.05	1.44	1.38
3	B	1402	K4E	C21-C22	3.79	1.45	1.38
3	B	1402	K4E	C21-C20	3.70	1.46	1.38
3	A	1402	K4E	C21-C22	3.68	1.45	1.38
3	A	1402	K4E	C16-N4	-3.66	1.32	1.37
3	A	1402	K4E	C20-C19	3.62	1.45	1.38
3	B	1402	K4E	C1-C6	3.61	1.47	1.40
3	B	1402	K4E	C19-C18	3.58	1.45	1.39
3	B	1402	K4E	C4-C3	3.56	1.44	1.38
3	A	1402	K4E	C1-C6	3.38	1.47	1.40
3	B	1402	K4E	C2-C3	3.31	1.43	1.38
3	B	1402	K4E	C5-C6	3.26	1.46	1.39
3	A	1402	K4E	C4-C3	3.24	1.44	1.38
3	A	1402	K4E	C21-C20	3.21	1.45	1.38
3	A	1402	K4E	C5-C4	3.10	1.43	1.38
3	B	1402	K4E	C20-C19	3.04	1.44	1.38
3	A	1402	K4E	C5-C6	3.00	1.45	1.39
3	A	1402	K4E	O1-C6	2.98	1.42	1.37
3	A	1402	K4E	C19-C18	2.86	1.44	1.39
3	B	1402	K4E	C16-N3	-2.73	1.33	1.38

Continued on next page...

Continued from previous page...

Mol	Chain	Res	Type	Atoms	Z	Observed(Å)	Ideal(Å)
3	B	1402	K4E	C2-C1	2.71	1.43	1.39
3	A	1402	K4E	C2-C1	2.67	1.43	1.39
3	B	1402	K4E	C14-C13	2.60	1.59	1.52
3	A	1402	K4E	C13-C10	2.52	1.57	1.52
3	A	1402	K4E	C18-N3	-2.43	1.36	1.40
3	A	1402	K4E	O3-C16	-2.28	1.19	1.23
3	B	1402	K4E	C18-N3	-2.26	1.36	1.40
3	A	1402	K4E	C11-C10	2.16	1.57	1.52
3	A	1402	K4E	C22-C17	2.12	1.43	1.39
3	A	1402	K4E	C16-N3	-2.00	1.35	1.38

All (32) bond angle outliers are listed below:

Mol	Chain	Res	Type	Atoms	Z	Observed(°)	Ideal(°)
3	A	1402	K4E	O3-C16-N4	-8.02	120.56	127.49
3	A	1402	K4E	C17-N4-C16	-7.74	105.52	110.27
3	B	1402	K4E	C17-N4-C16	-7.27	105.81	110.27
3	A	1402	K4E	C4-C3-CL1	-5.93	110.61	119.36
3	A	1402	K4E	N4-C16-N3	5.46	113.28	106.69
3	B	1402	K4E	C4-C3-C2	5.45	128.66	121.53
3	B	1402	K4E	O3-C16-N4	-5.40	122.82	127.49
3	B	1402	K4E	N4-C16-N3	4.89	112.59	106.69
3	A	1402	K4E	C18-N3-C16	-4.51	106.21	109.24
3	B	1402	K4E	C4-C3-CL1	-4.39	112.88	119.36
3	A	1402	K4E	C2-C3-CL1	4.27	124.52	119.17
3	B	1402	K4E	C18-N3-C16	-3.90	106.61	109.24
3	B	1402	K4E	C13-C10-N2	-3.55	103.47	110.57
3	B	1402	K4E	C14-C13-C10	3.37	115.19	111.49
3	B	1402	K4E	O2-C9-N2	2.94	127.93	122.95
3	B	1402	K4E	C1-C2-C3	-2.90	113.35	118.48
3	B	1402	K4E	C7-O1-C6	2.82	121.65	117.51
3	A	1402	K4E	C15-N3-C16	2.81	132.72	122.62
3	A	1402	K4E	C4-C3-C2	2.54	124.86	121.53
3	A	1402	K4E	C18-N3-C15	-2.54	121.04	127.37
3	A	1402	K4E	C14-C13-C10	2.52	114.26	111.49
3	B	1402	K4E	C15-N3-C16	2.52	131.68	122.62
3	B	1402	K4E	O1-C6-C1	2.41	117.82	114.81
3	A	1402	K4E	C12-C11-C10	2.37	114.09	111.49
3	B	1402	K4E	O1-C6-C5	-2.33	120.37	124.30
3	A	1402	K4E	O1-C6-C5	-2.32	120.39	124.30
3	B	1402	K4E	C5-C4-C3	-2.32	116.91	119.24
3	B	1402	K4E	C18-N3-C15	-2.27	121.70	127.37

Continued on next page...

Continued from previous page...

Mol	Chain	Res	Type	Atoms	Z	Observed(°)	Ideal(°)
3	A	1402	K4E	C4-C5-C6	-2.22	115.85	120.06
3	A	1402	K4E	C20-C21-C22	2.07	122.79	120.24
3	A	1402	K4E	C8-N1-C1	-2.04	120.92	123.94
3	A	1402	K4E	C5-C6-C1	2.02	123.12	120.39

There are no chirality outliers.

All (2) torsion outliers are listed below:

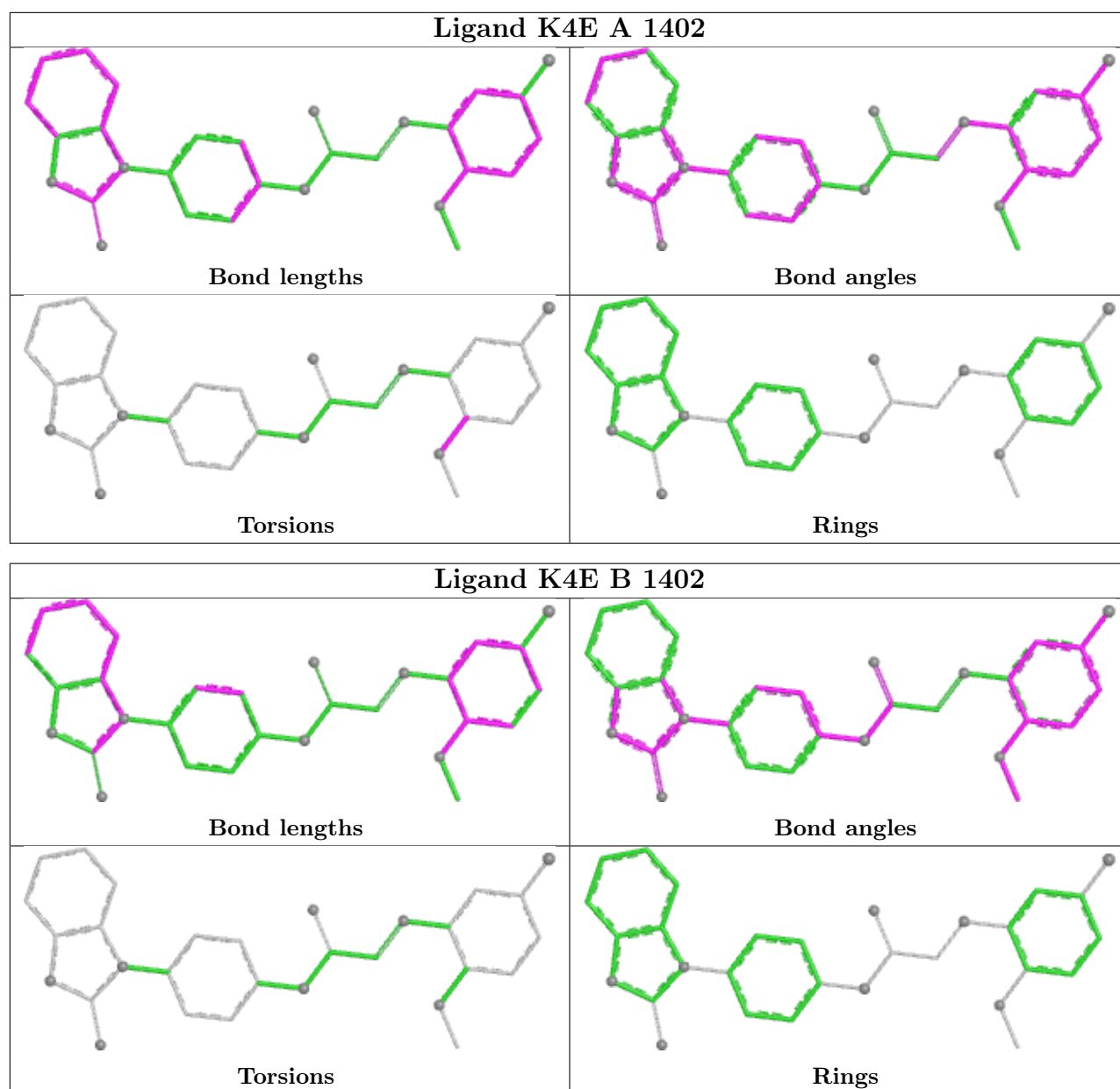
Mol	Chain	Res	Type	Atoms
3	A	1402	K4E	C1-C6-O1-C7
3	A	1402	K4E	C5-C6-O1-C7

There are no ring outliers.

2 monomers are involved in 5 short contacts:

Mol	Chain	Res	Type	Clashes	Symm-Clashes
3	A	1402	K4E	2	0
3	B	1402	K4E	3	0

The following is a two-dimensional graphical depiction of Mogul quality analysis of bond lengths, bond angles, torsion angles, and ring geometry for all instances of the Ligand of Interest. In addition, ligands with molecular weight > 250 and outliers as shown on the validation Tables will also be included. For torsion angles, if less than 5% of the Mogul distribution of torsion angles is within 10 degrees of the torsion angle in question, then that torsion angle is considered an outlier. Any bond that is central to one or more torsion angles identified as an outlier by Mogul will be highlighted in the graph. For rings, the root-mean-square deviation (RMSD) between the ring in question and similar rings identified by Mogul is calculated over all ring torsion angles. If the average RMSD is greater than 60 degrees and the minimal RMSD between the ring in question and any Mogul-identified rings is also greater than 60 degrees, then that ring is considered an outlier. The outliers are highlighted in purple. The color gray indicates Mogul did not find sufficient equivalents in the CSD to analyse the geometry.



5.7 Other polymers [\(i\)](#)

There are no such residues in this entry.

5.8 Polymer linkage issues [\(i\)](#)

There are no chain breaks in this entry.

6 Fit of model and data

6.1 Protein, DNA and RNA chains

In the following table, the column labelled ‘#RSRZ > 2’ contains the number (and percentage) of RSRZ outliers, followed by percent RSRZ outliers for the chain as percentile scores relative to all X-ray entries and entries of similar resolution. The OWAB column contains the minimum, median, 95th percentile and maximum values of the occupancy-weighted average B-factor per residue. The column labelled ‘Q < 0.9’ lists the number of (and percentage) of residues with an average occupancy less than 0.9.

Mol	Chain	Analysed	<RSRZ>	#RSRZ>2	OWAB(Å ²)	Q<0.9
1	A	208/217 (95%)	0.55	17 (8%) 17 19	20, 32, 57, 72	0
1	B	205/217 (94%)	0.77	29 (14%) 6 7	24, 38, 62, 76	0
All	All	413/434 (95%)	0.66	46 (11%) 10 11	20, 35, 61, 76	0

All (46) RSRZ outliers are listed below:

Mol	Chain	Res	Type	RSRZ
1	A	1281	ARG	4.3
1	B	1178	ASN	3.9
1	A	1134	ASP	3.7
1	A	1204	ILE	3.6
1	B	1136	GLY	3.6
1	B	1267	LYS	3.5
1	A	1283	SER	3.5
1	A	1315	HIS	3.1
1	A	1131	GLU	3.0
1	A	1289	TYR	3.0
1	B	1281	ARG	3.0
1	A	1266	MET	3.0
1	B	1207	MET	3.0
1	B	1204	ILE	2.9
1	B	1289	TYR	2.9
1	B	1232	THR	2.9
1	A	1207	MET	2.8
1	B	1315	HIS	2.7
1	B	1135	GLY	2.7
1	B	1134	ASP	2.7
1	B	1131	GLU	2.7
1	B	1265	THR	2.6
1	B	1290	ALA	2.6
1	B	1266	MET	2.6

Continued on next page...

Continued from previous page...

Mol	Chain	Res	Type	RSRZ
1	A	1104	GLN	2.5
1	B	1171	GLU	2.5
1	B	1143	ASN	2.5
1	B	1160	GLU	2.5
1	A	1148	ILE	2.5
1	A	1261	LEU	2.4
1	B	1282	PRO	2.4
1	A	1263	PHE	2.4
1	B	1132	HIS	2.4
1	B	1174	HIS	2.3
1	B	1313	PRO	2.2
1	B	1130	ARG	2.2
1	B	1133	ARG	2.2
1	B	1203	TYR	2.2
1	B	1228	ILE	2.2
1	B	1148	ILE	2.2
1	A	1280	GLY	2.2
1	B	1206	GLY	2.2
1	A	1282	PRO	2.1
1	B	1112	ALA	2.1
1	A	1291	GLU	2.1
1	A	1264	SER	2.0

6.2 Non-standard residues in protein, DNA, RNA chains [\(i\)](#)

There are no non-standard protein/DNA/RNA residues in this entry.

6.3 Carbohydrates [\(i\)](#)

There are no oligosaccharides in this entry.

6.4 Ligands [\(i\)](#)

In the following table, the Atoms column lists the number of modelled atoms in the group and the number defined in the chemical component dictionary. The B-factors column lists the minimum, median, 95th percentile and maximum values of B factors of atoms in the group. The column labelled 'Q< 0.9' lists the number of atoms with occupancy less than 0.9.

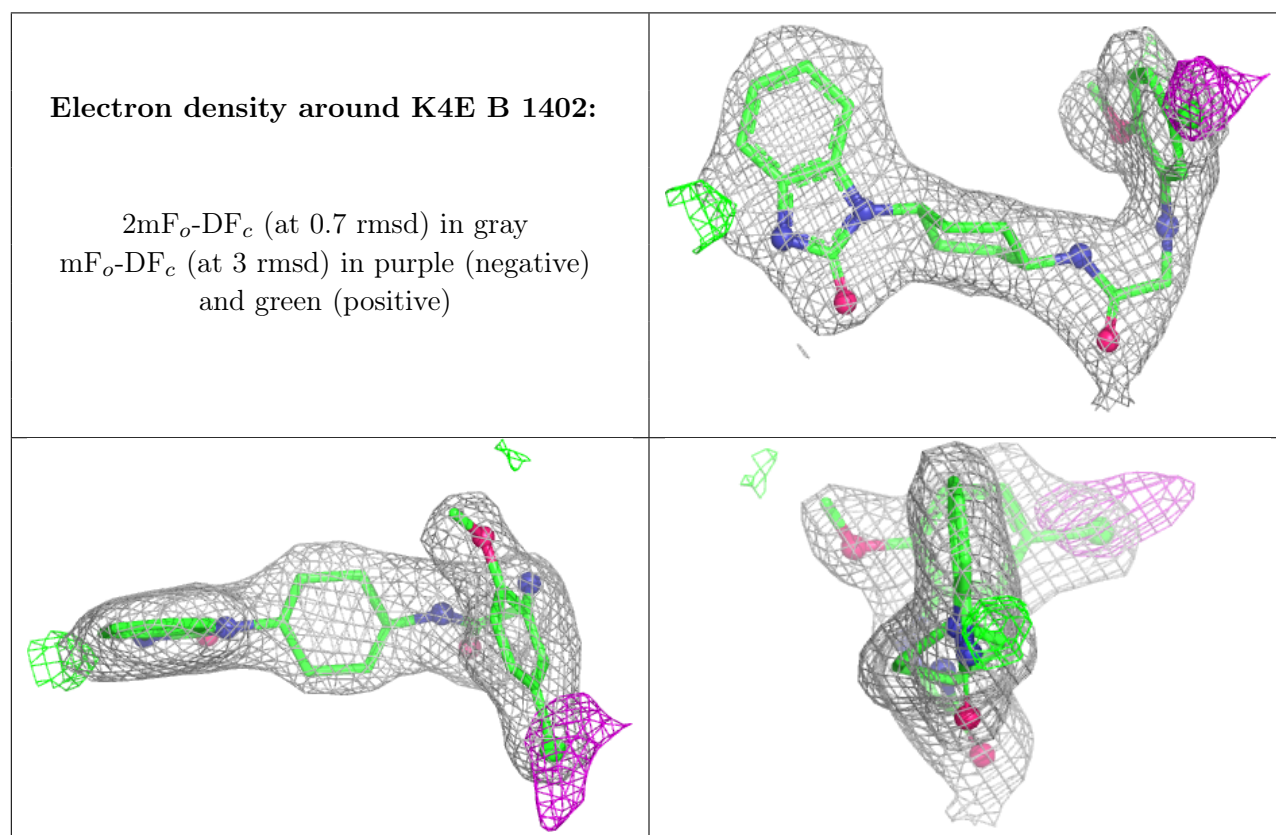
Mol	Type	Chain	Res	Atoms	RSCC	RSR	B-factors(\AA^2)	Q<0.9
3	K4E	B	1402	30/30	0.87	0.10	25,32,44,49	0

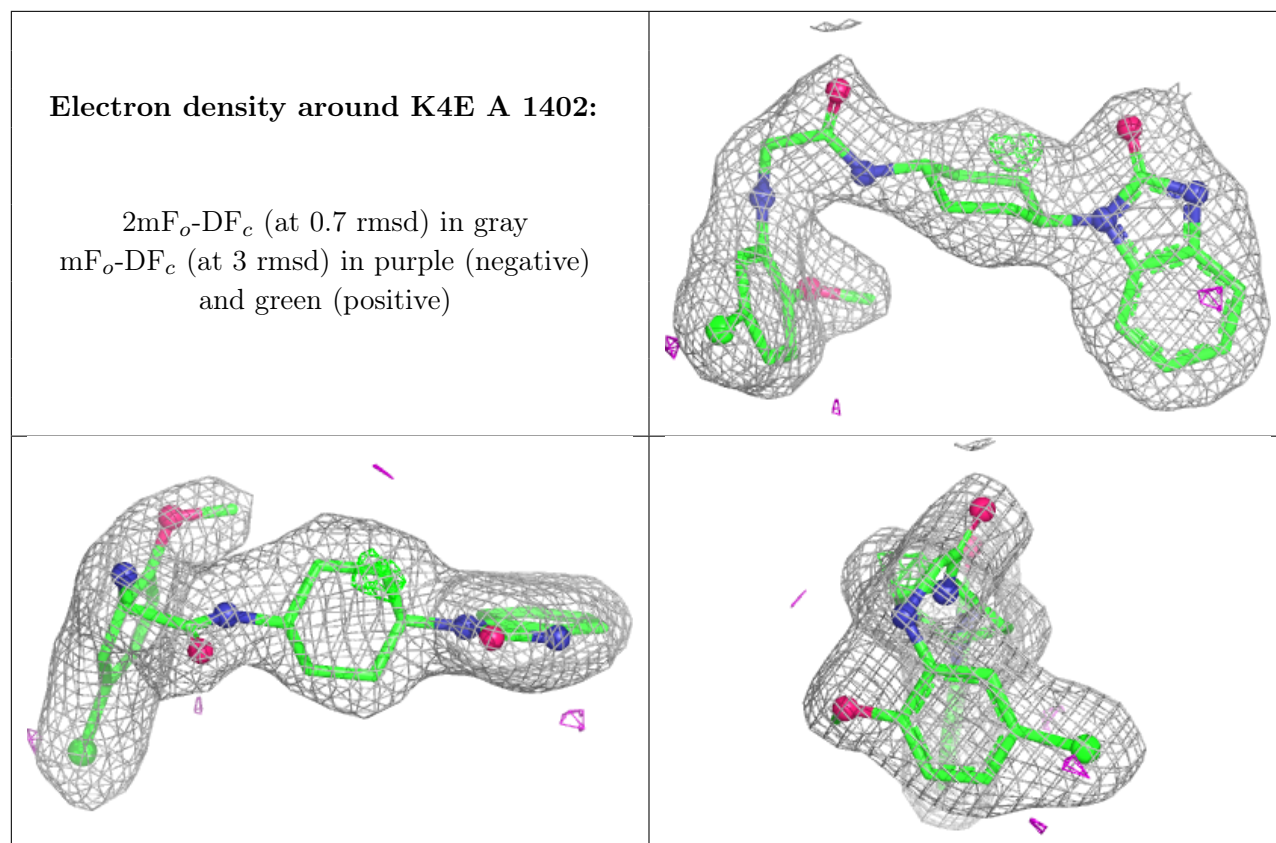
Continued on next page...

Continued from previous page...

Mol	Type	Chain	Res	Atoms	RSCC	RSR	B-factors(\AA^2)	Q<0.9
3	K4E	A	1402	30/30	0.90	0.10	25,27,39,41	0
2	ZN	A	1401	1/1	0.99	0.07	36,36,36,36	0
2	ZN	B	1401	1/1	0.99	0.04	44,44,44,44	0

The following is a graphical depiction of the model fit to experimental electron density of all instances of the Ligand of Interest. In addition, ligands with molecular weight > 250 and outliers as shown on the geometry validation Tables will also be included. Each fit is shown from different orientation to approximate a three-dimensional view.





6.5 Other polymers [i](#)

There are no such residues in this entry.