



wwPDB X-ray Structure Validation Summary Report

Mar 14, 2026 – 12:04 PM UTC

PDB ID : 7KDN / pdb_00007kdn
Title : Crystal structure of Acetyl-CoA Synthetase in Complex with Adenosine-5'-pr
opylphosphate from Aspergillus fumigatus
Authors : Seattle Structural Genomics Center for Infectious Disease (SSGCID)
Deposited on : 2020-10-09
Resolution : 2.80 Å (reported)

This is a wwPDB X-ray Structure Validation Summary Report for a publicly released PDB entry.

We welcome your comments at validation@mail.wwpdb.org

A user guide is available at

<https://www.wwpdb.org/validation/2017/XrayValidationReportHelp>

with specific help available everywhere you see the  symbol.

The types of validation reports are described at

<http://www.wwpdb.org/validation/2017/FAQs#types>.

The following versions of software and data (see [references](#) ) were used in the production of this report:

MolProbity : 4-5-2 with Phenix2.0
Mogul : 2022.3.0, CSD as543be (2022)
Xtrriage (Phenix) : 2.0
EDS : 3.0
Buster-report : wwPDB partial adaption of 1.1.7 (2018)
Percentile statistics : 20250101.v01 (using entries in the PDB archive January 1st 2025)
CCP4 : 9.0.010 (Gargrove)
Density-Fitness : 1.0.12
Ideal geometry (proteins) : Engh & Huber (2001)
Ideal geometry (DNA, RNA) : Parkinson et al. (1996)
Validation Pipeline (wwPDB-VP) : 2.49

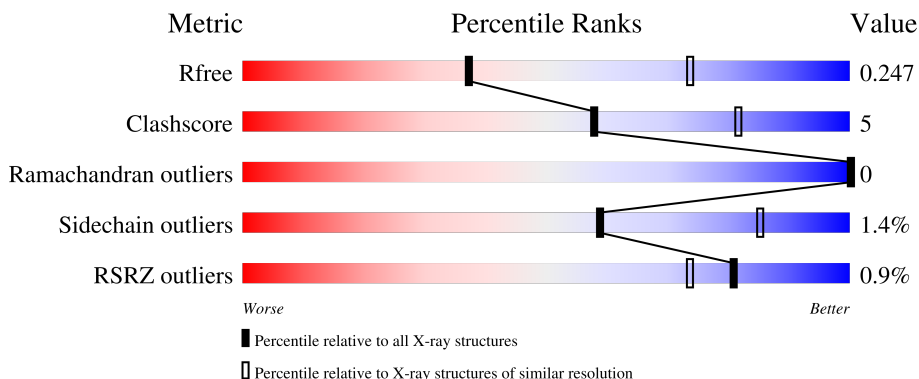
1 Overall quality at a glance

The following experimental techniques were used to determine the structure:

X-RAY DIFFRACTION

The reported resolution of this entry is 2.80 Å.

Percentile scores (ranging between 0-100) for global validation metrics of the entry are shown in the following graphic. The table shows the number of entries on which the scores are based.




Metric	Whole archive (#Entries)	Similar resolution (#Entries, resolution range(Å))
R_{free}	180053	3866 (2.80-2.80)
Clashscore	190562	4276 (2.80-2.80)
Ramachandran outliers	187476	4196 (2.80-2.80)
Sidechain outliers	187428	4198 (2.80-2.80)
RSRZ outliers	180081	3869 (2.80-2.80)

The table below summarises the geometric issues observed across the polymeric chains and their fit to the electron density. The red, orange, yellow and green segments of the lower bar indicate the fraction of residues that contain outliers for ≥ 3 , 2, 1 and 0 types of geometric quality criteria respectively. A grey segment represents the fraction of residues that are not modelled. The numeric value for each fraction is indicated below the corresponding segment, with a dot representing fractions $\leq 5\%$. The upper red bar (where present) indicates the fraction of residues that have poor fit to the electron density. The numeric value is given above the bar.

Mol	Chain	Length	Quality of chain
1	A	685	
1	B	685	
1	C	685	
1	D	685	
1	E	685	

Continued on next page...

Continued from previous page...

Mol	Chain	Length	Quality of chain
1	F	685	 <p>A horizontal bar chart representing the quality of chain. The bar is divided into three segments: a green segment on the left labeled '75%', a yellow segment in the middle labeled '11%', and a grey segment on the right labeled '14%'. A small red square is positioned at the beginning of the bar, and a '%' symbol is located above the bar.</p>

2 Entry composition [i](#)

There are 3 unique types of molecules in this entry. The entry contains 26663 atoms, of which 0 are hydrogens and 0 are deuteriums.

In the tables below, the ZeroOcc column contains the number of atoms modelled with zero occupancy, the AltConf column contains the number of residues with at least one atom in alternate conformation and the Trace column contains the number of residues modelled with at most 2 atoms.

- Molecule 1 is a protein called Acetyl-coenzyme A synthetase.

Mol	Chain	Residues	Atoms					ZeroOcc	AltConf	Trace
			Total	C	N	O	S			
1	A	622	4711	3015	800	881	15	0	1	0
1	B	575	4346	2784	737	810	15	0	0	0
1	C	518	4032	2590	681	746	15	0	0	0
1	D	590	4411	2825	747	824	15	0	0	0
1	E	605	4567	2929	780	843	15	0	2	0
1	F	589	4397	2816	748	818	15	0	0	0

There are 96 discrepancies between the modelled and reference sequences:

Chain	Residue	Modelled	Actual	Comment	Reference
A	-14	MET	-	initiating methionine	UNP Q4WQ02
A	-13	HIS	-	expression tag	UNP Q4WQ02
A	-12	HIS	-	expression tag	UNP Q4WQ02
A	-11	HIS	-	expression tag	UNP Q4WQ02
A	-10	HIS	-	expression tag	UNP Q4WQ02
A	-9	HIS	-	expression tag	UNP Q4WQ02
A	-8	HIS	-	expression tag	UNP Q4WQ02
A	-7	HIS	-	expression tag	UNP Q4WQ02
A	-6	HIS	-	expression tag	UNP Q4WQ02
A	-5	GLU	-	expression tag	UNP Q4WQ02
A	-4	ASN	-	expression tag	UNP Q4WQ02
A	-3	LEU	-	expression tag	UNP Q4WQ02
A	-2	TYR	-	expression tag	UNP Q4WQ02
A	-1	PHE	-	expression tag	UNP Q4WQ02
A	0	GLN	-	expression tag	UNP Q4WQ02
A	1	GLY	-	expression tag	UNP Q4WQ02
B	-14	MET	-	initiating methionine	UNP Q4WQ02

Continued on next page...

Continued from previous page...

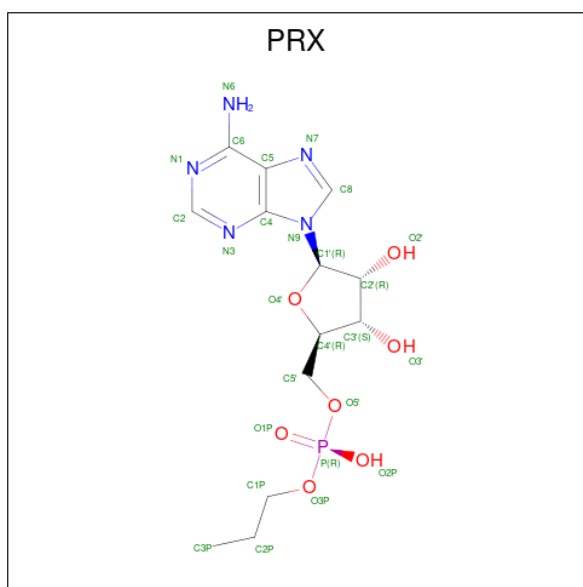
Chain	Residue	Modelled	Actual	Comment	Reference
B	-13	HIS	-	expression tag	UNP Q4WQ02
B	-12	HIS	-	expression tag	UNP Q4WQ02
B	-11	HIS	-	expression tag	UNP Q4WQ02
B	-10	HIS	-	expression tag	UNP Q4WQ02
B	-9	HIS	-	expression tag	UNP Q4WQ02
B	-8	HIS	-	expression tag	UNP Q4WQ02
B	-7	HIS	-	expression tag	UNP Q4WQ02
B	-6	HIS	-	expression tag	UNP Q4WQ02
B	-5	GLU	-	expression tag	UNP Q4WQ02
B	-4	ASN	-	expression tag	UNP Q4WQ02
B	-3	LEU	-	expression tag	UNP Q4WQ02
B	-2	TYR	-	expression tag	UNP Q4WQ02
B	-1	PHE	-	expression tag	UNP Q4WQ02
B	0	GLN	-	expression tag	UNP Q4WQ02
B	1	GLY	-	expression tag	UNP Q4WQ02
C	-14	MET	-	initiating methionine	UNP Q4WQ02
C	-13	HIS	-	expression tag	UNP Q4WQ02
C	-12	HIS	-	expression tag	UNP Q4WQ02
C	-11	HIS	-	expression tag	UNP Q4WQ02
C	-10	HIS	-	expression tag	UNP Q4WQ02
C	-9	HIS	-	expression tag	UNP Q4WQ02
C	-8	HIS	-	expression tag	UNP Q4WQ02
C	-7	HIS	-	expression tag	UNP Q4WQ02
C	-6	HIS	-	expression tag	UNP Q4WQ02
C	-5	GLU	-	expression tag	UNP Q4WQ02
C	-4	ASN	-	expression tag	UNP Q4WQ02
C	-3	LEU	-	expression tag	UNP Q4WQ02
C	-2	TYR	-	expression tag	UNP Q4WQ02
C	-1	PHE	-	expression tag	UNP Q4WQ02
C	0	GLN	-	expression tag	UNP Q4WQ02
C	1	GLY	-	expression tag	UNP Q4WQ02
D	-14	MET	-	initiating methionine	UNP Q4WQ02
D	-13	HIS	-	expression tag	UNP Q4WQ02
D	-12	HIS	-	expression tag	UNP Q4WQ02
D	-11	HIS	-	expression tag	UNP Q4WQ02
D	-10	HIS	-	expression tag	UNP Q4WQ02
D	-9	HIS	-	expression tag	UNP Q4WQ02
D	-8	HIS	-	expression tag	UNP Q4WQ02
D	-7	HIS	-	expression tag	UNP Q4WQ02
D	-6	HIS	-	expression tag	UNP Q4WQ02
D	-5	GLU	-	expression tag	UNP Q4WQ02
D	-4	ASN	-	expression tag	UNP Q4WQ02

Continued on next page...

Continued from previous page...

Chain	Residue	Modelled	Actual	Comment	Reference
D	-3	LEU	-	expression tag	UNP Q4WQ02
D	-2	TYR	-	expression tag	UNP Q4WQ02
D	-1	PHE	-	expression tag	UNP Q4WQ02
D	0	GLN	-	expression tag	UNP Q4WQ02
D	1	GLY	-	expression tag	UNP Q4WQ02
E	-14	MET	-	initiating methionine	UNP Q4WQ02
E	-13	HIS	-	expression tag	UNP Q4WQ02
E	-12	HIS	-	expression tag	UNP Q4WQ02
E	-11	HIS	-	expression tag	UNP Q4WQ02
E	-10	HIS	-	expression tag	UNP Q4WQ02
E	-9	HIS	-	expression tag	UNP Q4WQ02
E	-8	HIS	-	expression tag	UNP Q4WQ02
E	-7	HIS	-	expression tag	UNP Q4WQ02
E	-6	HIS	-	expression tag	UNP Q4WQ02
E	-5	GLU	-	expression tag	UNP Q4WQ02
E	-4	ASN	-	expression tag	UNP Q4WQ02
E	-3	LEU	-	expression tag	UNP Q4WQ02
E	-2	TYR	-	expression tag	UNP Q4WQ02
E	-1	PHE	-	expression tag	UNP Q4WQ02
E	0	GLN	-	expression tag	UNP Q4WQ02
E	1	GLY	-	expression tag	UNP Q4WQ02
F	-14	MET	-	initiating methionine	UNP Q4WQ02
F	-13	HIS	-	expression tag	UNP Q4WQ02
F	-12	HIS	-	expression tag	UNP Q4WQ02
F	-11	HIS	-	expression tag	UNP Q4WQ02
F	-10	HIS	-	expression tag	UNP Q4WQ02
F	-9	HIS	-	expression tag	UNP Q4WQ02
F	-8	HIS	-	expression tag	UNP Q4WQ02
F	-7	HIS	-	expression tag	UNP Q4WQ02
F	-6	HIS	-	expression tag	UNP Q4WQ02
F	-5	GLU	-	expression tag	UNP Q4WQ02
F	-4	ASN	-	expression tag	UNP Q4WQ02
F	-3	LEU	-	expression tag	UNP Q4WQ02
F	-2	TYR	-	expression tag	UNP Q4WQ02
F	-1	PHE	-	expression tag	UNP Q4WQ02
F	0	GLN	-	expression tag	UNP Q4WQ02
F	1	GLY	-	expression tag	UNP Q4WQ02

- Molecule 2 is ADENOSINE-5'-MONOPHOSPHATE-PROPYL ESTER (CCD ID: PRX) (formula: C₁₃H₂₀N₅O₇P) (labeled as "Ligand of Interest" by depositor).



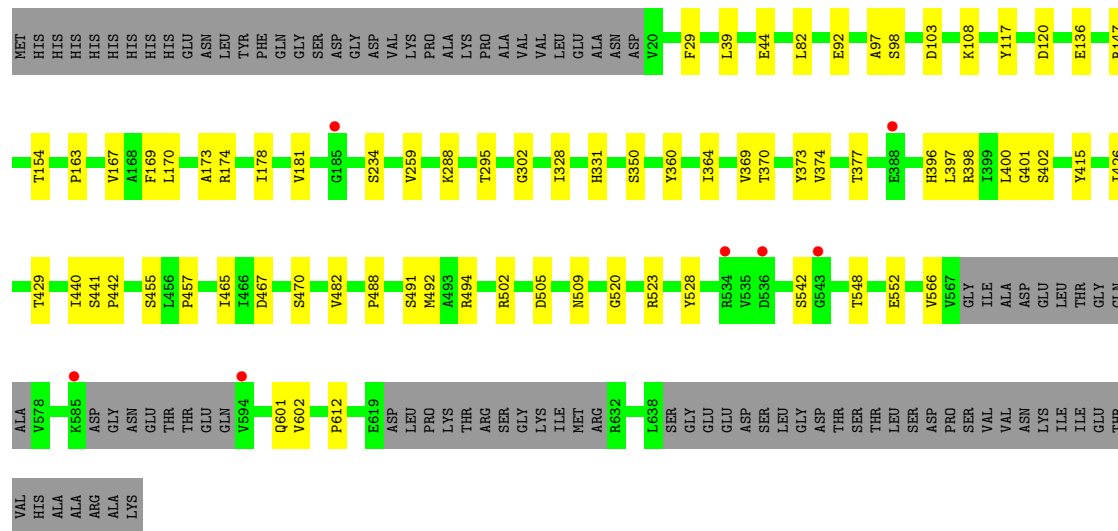
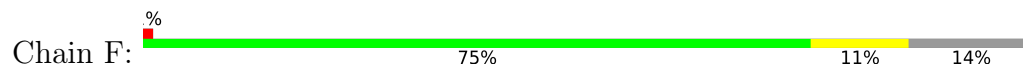
Mol	Chain	Residues	Atoms					ZeroOcc	AltConf
			Total	C	N	O	P		
2	A	1	Total	C	N	O	P	0	0
			26	13	5	7	1		
2	B	1	Total	C	N	O	P	0	0
			26	13	5	7	1		
2	C	1	Total	C	N	O	P	0	0
			26	13	5	7	1		
2	D	1	Total	C	N	O	P	0	0
			26	13	5	7	1		
2	E	1	Total	C	N	O	P	0	0
			26	13	5	7	1		
2	F	1	Total	C	N	O	P	0	0
			26	13	5	7	1		

- Molecule 3 is water.

Mol	Chain	Residues	Atoms		ZeroOcc	AltConf
			Total	O		
3	A	11	Total	O	0	0
			11	11		
3	B	6	Total	O	0	0
			6	6		
3	C	5	Total	O	0	0
			5	5		
3	D	10	Total	O	0	0
			10	10		
3	E	5	Total	O	0	0
			5	5		
3	F	6	Total	O	0	0
			6	6		



- Molecule 1: Acetyl-coenzyme A synthetase



4 Data and refinement statistics

Property	Value	Source
Space group	P 1	Depositor
Cell constants a, b, c, α , β , γ	103.79Å 104.21Å 125.65Å 68.15° 66.55° 62.22°	Depositor
Resolution (Å)	47.92 – 2.80 47.92 – 2.80	Depositor EDS
% Data completeness (in resolution range)	98.1 (47.92-2.80) 98.0 (47.92-2.80)	Depositor EDS
R_{merge}	0.12	Depositor
R_{sym}	(Not available)	Depositor
$\langle I/\sigma(I) \rangle$ ¹	1.86 (at 2.81Å)	Xtrriage
Refinement program	PHENIX 1.18.2_3874	Depositor
R, R_{free}	0.215 , 0.246 0.216 , 0.247	Depositor DCC
R_{free} test set	2001 reflections (1.95%)	wwPDB-VP
Wilson B-factor (Å ²)	55.0	Xtrriage
Anisotropy	0.747	Xtrriage
Bulk solvent k_{sol} (e/Å ³), B_{sol} (Å ²)	0.28 , 37.6	EDS
L-test for twinning ²	$\langle L \rangle = 0.50$, $\langle L^2 \rangle = 0.33$	Xtrriage
Estimated twinning fraction	0.016 for -k,-h,-l	Xtrriage
F_o, F_c correlation	0.94	EDS
Total number of atoms	26663	wwPDB-VP
Average B, all atoms (Å ²)	65.0	wwPDB-VP

Xtrriage's analysis on translational NCS is as follows: *The largest off-origin peak in the Patterson function is 3.12% of the height of the origin peak. No significant pseudotranslation is detected.*

¹Intensities estimated from amplitudes.

²Theoretical values of $\langle |L| \rangle$, $\langle L^2 \rangle$ for acentric reflections are 0.5, 0.333 respectively for untwinned datasets, and 0.375, 0.2 for perfectly twinned datasets.

5 Model quality

5.1 Standard geometry

Bond lengths and bond angles in the following residue types are not validated in this section: PRX

The Z score for a bond length (or angle) is the number of standard deviations the observed value is removed from the expected value. A bond length (or angle) with $|Z| > 5$ is considered an outlier worth inspection. RMSZ is the root-mean-square of all Z scores of the bond lengths (or angles).

Mol	Chain	Bond lengths		Bond angles	
		RMSZ	# Z >5	RMSZ	# Z >5
1	A	0.11	0/4840	0.31	0/6609
1	B	0.12	0/4467	0.31	0/6099
1	C	0.11	0/4150	0.30	0/5658
1	D	0.12	0/4532	0.31	0/6194
1	E	0.11	0/4699	0.30	0/6414
1	F	0.11	0/4520	0.29	0/6178
All	All	0.11	0/27208	0.30	0/37152

There are no bond length outliers.

There are no bond angle outliers.

There are no chirality outliers.

There are no planarity outliers.

5.2 Too-close contacts

In the following table, the Non-H and H(model) columns list the number of non-hydrogen atoms and hydrogen atoms in the chain respectively. The H(added) column lists the number of hydrogen atoms added and optimized by MolProbity. The Clashes column lists the number of clashes within the asymmetric unit, whereas Symm-Clashes lists symmetry-related clashes.

Mol	Chain	Non-H	H(model)	H(added)	Clashes	Symm-Clashes
1	A	4711	0	4395	49	0
1	B	4346	0	4038	35	0
1	C	4032	0	3810	45	0
1	D	4411	0	4026	38	0
1	E	4567	0	4229	30	0
1	F	4397	0	3998	39	0
2	A	26	0	19	3	0

Continued on next page...

Continued from previous page...

Mol	Chain	Non-H	H(model)	H(added)	Clashes	Symm-Clashes
2	B	26	0	19	0	0
2	C	26	0	19	1	0
2	D	26	0	19	1	0
2	E	26	0	19	0	0
2	F	26	0	19	0	0
3	A	11	0	0	0	0
3	B	6	0	0	0	0
3	C	5	0	0	0	0
3	D	10	0	0	0	0
3	E	5	0	0	0	0
3	F	6	0	0	0	0
All	All	26663	0	24610	231	0

The all-atom clashscore is defined as the number of clashes found per 1000 atoms (including hydrogen atoms). The all-atom clashscore for this structure is 5.

The worst 5 of 231 close contacts within the same asymmetric unit are listed below, sorted by their clash magnitude.

Atom-1	Atom-2	Interatomic distance (Å)	Clash overlap (Å)
1:C:476:GLY:O	1:C:523:ARG:NH2	2.26	0.68
1:D:432:GLN:HB3	2:D:701:PRX:H5'2	1.79	0.65
1:C:505:ASP:HA	1:C:509:ASN:HB2	1.79	0.64
1:F:373:TYR:HH	1:F:429:THR:HG1	1.45	0.64
1:B:364:ILE:HG23	1:B:369:VAL:HB	1.81	0.63

There are no symmetry-related clashes.

5.3 Torsion angles [i](#)

5.3.1 Protein backbone [i](#)

In the following table, the Percentiles column shows the percent Ramachandran outliers of the chain as a percentile score with respect to all X-ray entries followed by that with respect to entries of similar resolution.

The Analysed column shows the number of residues for which the backbone conformation was analysed, and the total number of residues.

Mol	Chain	Analysed	Favoured	Allowed	Outliers	Percentiles
1	A	617/685 (90%)	599 (97%)	18 (3%)	0	100 100

Continued on next page...

Continued from previous page...

Mol	Chain	Analysed	Favoured	Allowed	Outliers	Percentiles	
1	B	569/685 (83%)	552 (97%)	17 (3%)	0	100	100
1	C	514/685 (75%)	495 (96%)	19 (4%)	0	100	100
1	D	582/685 (85%)	566 (97%)	16 (3%)	0	100	100
1	E	601/685 (88%)	583 (97%)	18 (3%)	0	100	100
1	F	581/685 (85%)	563 (97%)	18 (3%)	0	100	100
All	All	3464/4110 (84%)	3358 (97%)	106 (3%)	0	100	100

There are no Ramachandran outliers to report.

5.3.2 Protein sidechains [i](#)

In the following table, the Percentiles column shows the percent sidechain outliers of the chain as a percentile score with respect to all X-ray entries followed by that with respect to entries of similar resolution.

The Analysed column shows the number of residues for which the sidechain conformation was analysed, and the total number of residues.

Mol	Chain	Analysed	Rotameric	Outliers	Percentiles	
1	A	466/574 (81%)	460 (99%)	6 (1%)	61	86
1	B	428/574 (75%)	422 (99%)	6 (1%)	59	85
1	C	411/574 (72%)	403 (98%)	8 (2%)	50	81
1	D	423/574 (74%)	416 (98%)	7 (2%)	53	83
1	E	441/574 (77%)	436 (99%)	5 (1%)	65	87
1	F	420/574 (73%)	416 (99%)	4 (1%)	68	88
All	All	2589/3444 (75%)	2553 (99%)	36 (1%)	59	85

5 of 36 residues with a non-rotameric sidechain are listed below:

Mol	Chain	Res	Type
1	E	259	VAL
1	F	601	GLN
1	E	290	LYS
1	F	92	GLU
1	C	48	LEU

Sometimes sidechains can be flipped to improve hydrogen bonding and reduce clashes. 5 of 15 such sidechains are listed below:

Mol	Chain	Res	Type
1	B	146	GLN
1	F	87	ASN
1	C	84	ASN
1	F	432	GLN
1	D	87	ASN

5.3.3 RNA [i](#)

There are no RNA molecules in this entry.

5.4 Non-standard residues in protein, DNA, RNA chains [i](#)

There are no non-standard protein/DNA/RNA residues in this entry.

5.5 Carbohydrates [i](#)

There are no oligosaccharides in this entry.

5.6 Ligand geometry [i](#)

6 ligands are modelled in this entry.

In the following table, the Counts columns list the number of bonds (or angles) for which Mogul statistics could be retrieved, the number of bonds (or angles) that are observed in the model and the number of bonds (or angles) that are defined in the Chemical Component Dictionary. The Link column lists molecule types, if any, to which the group is linked. The Z score for a bond length (or angle) is the number of standard deviations the observed value is removed from the expected value. A bond length (or angle) with $|Z| > 2$ is considered an outlier worth inspection. RMSZ is the root-mean-square of all Z scores of the bond lengths (or angles).

Mol	Type	Chain	Res	Link	Bond lengths			Bond angles		
					Counts	RMSZ	$\# Z > 2$	Counts	RMSZ	$\# Z > 2$
2	PRX	A	701	-	28,28,28	0.28	0	40,41,41	0.42	0
2	PRX	D	701	-	28,28,28	0.26	0	40,41,41	0.44	0
2	PRX	C	701	-	28,28,28	0.26	0	40,41,41	0.47	0
2	PRX	B	701	-	28,28,28	0.28	0	40,41,41	0.45	0
2	PRX	E	701	-	28,28,28	0.26	0	40,41,41	0.43	0
2	PRX	F	701	-	28,28,28	0.26	0	40,41,41	0.44	0

In the following table, the Chirals column lists the number of chiral outliers, the number of chiral centers analysed, the number of these observed in the model and the number defined in the Chemical Component Dictionary. Similar counts are reported in the Torsion and Rings columns.

'-' means no outliers of that kind were identified.

Mol	Type	Chain	Res	Link	Chirals	Torsions	Rings
2	PRX	A	701	-	-	1/15/31/31	0/3/3/3
2	PRX	D	701	-	-	1/15/31/31	0/3/3/3
2	PRX	C	701	-	-	0/15/31/31	0/3/3/3
2	PRX	B	701	-	-	1/15/31/31	0/3/3/3
2	PRX	E	701	-	-	1/15/31/31	0/3/3/3
2	PRX	F	701	-	-	1/15/31/31	0/3/3/3

There are no bond length outliers.

There are no bond angle outliers.

There are no chirality outliers.

All (5) torsion outliers are listed below:

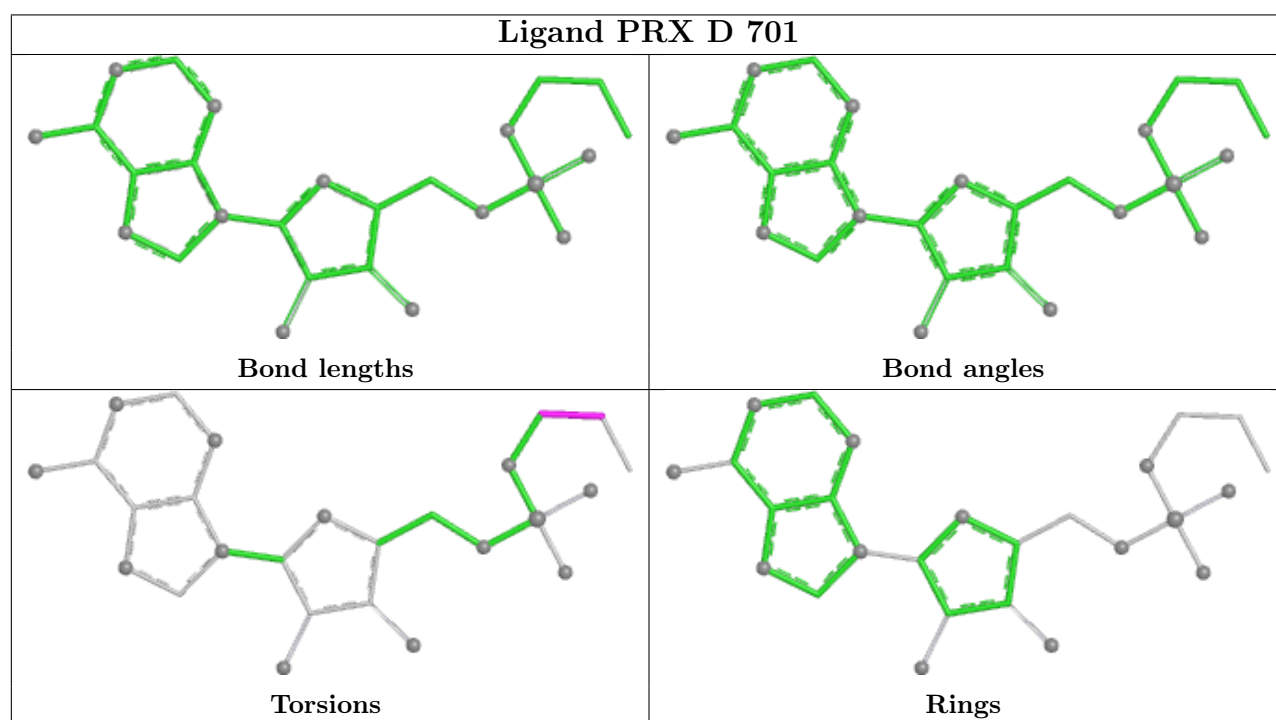
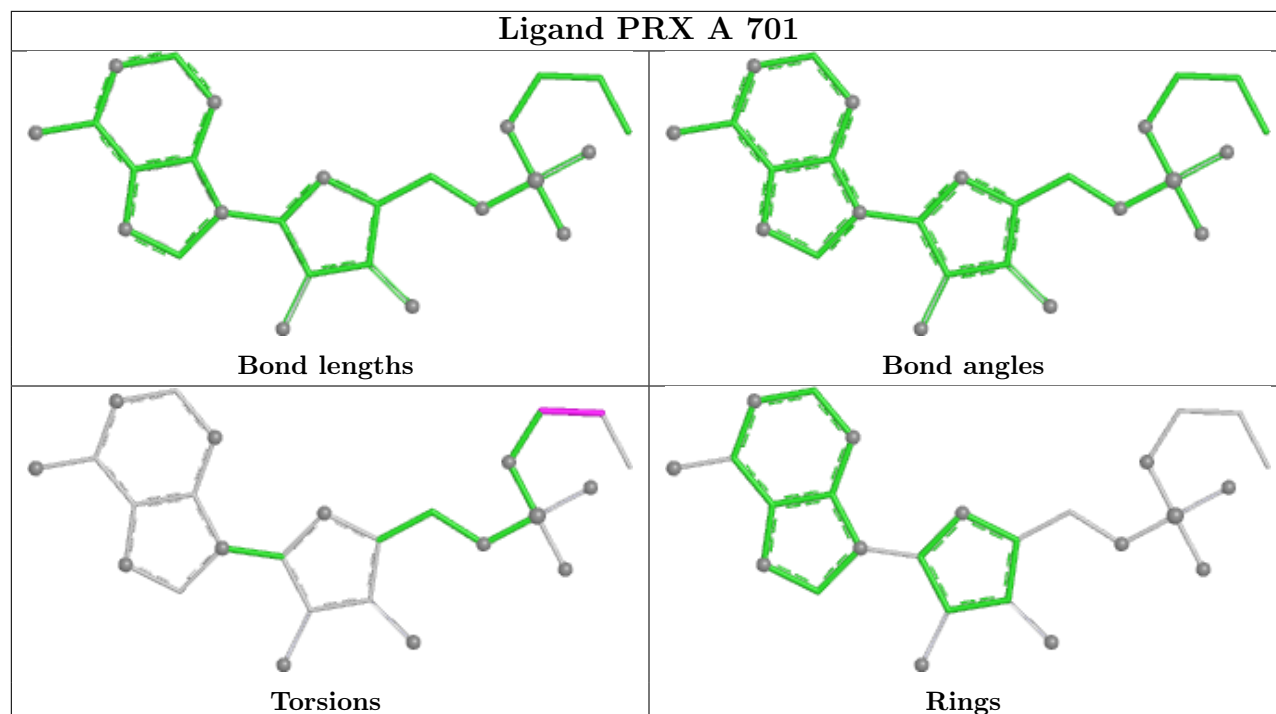
Mol	Chain	Res	Type	Atoms
2	F	701	PRX	O3P-C1P-C2P-C3P
2	E	701	PRX	O3P-C1P-C2P-C3P
2	A	701	PRX	O3P-C1P-C2P-C3P
2	B	701	PRX	O3P-C1P-C2P-C3P
2	D	701	PRX	O3P-C1P-C2P-C3P

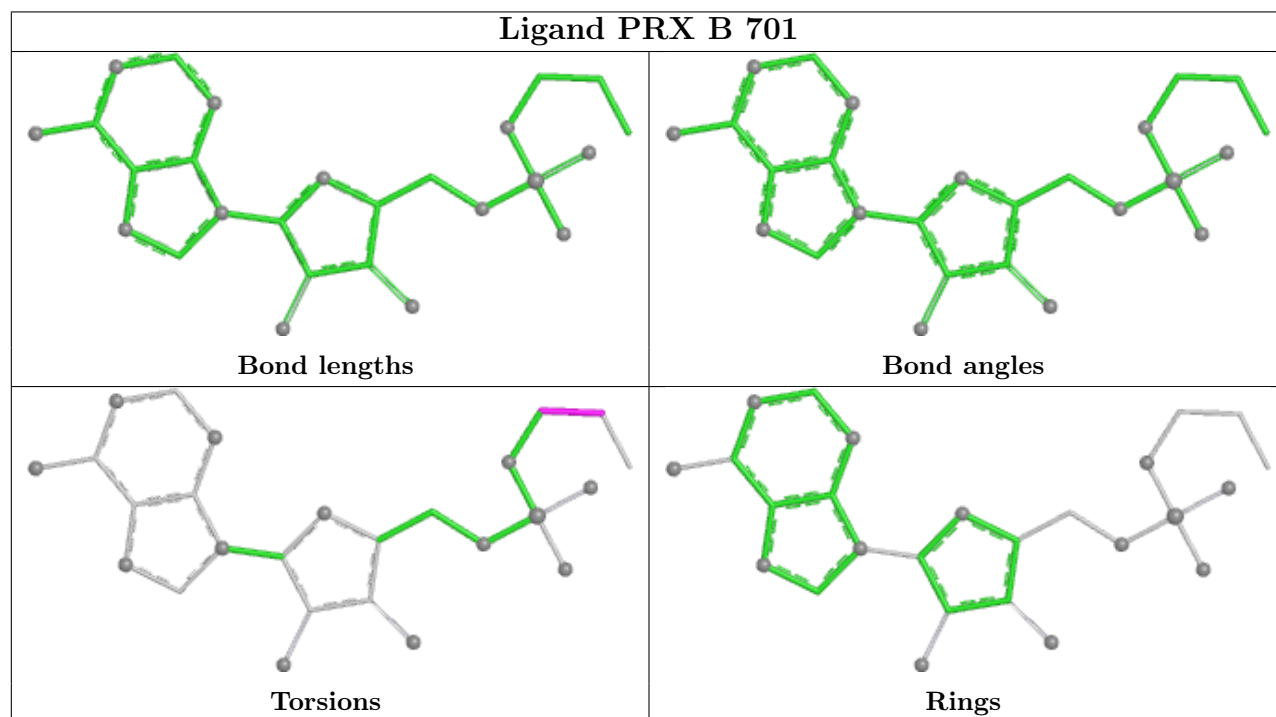
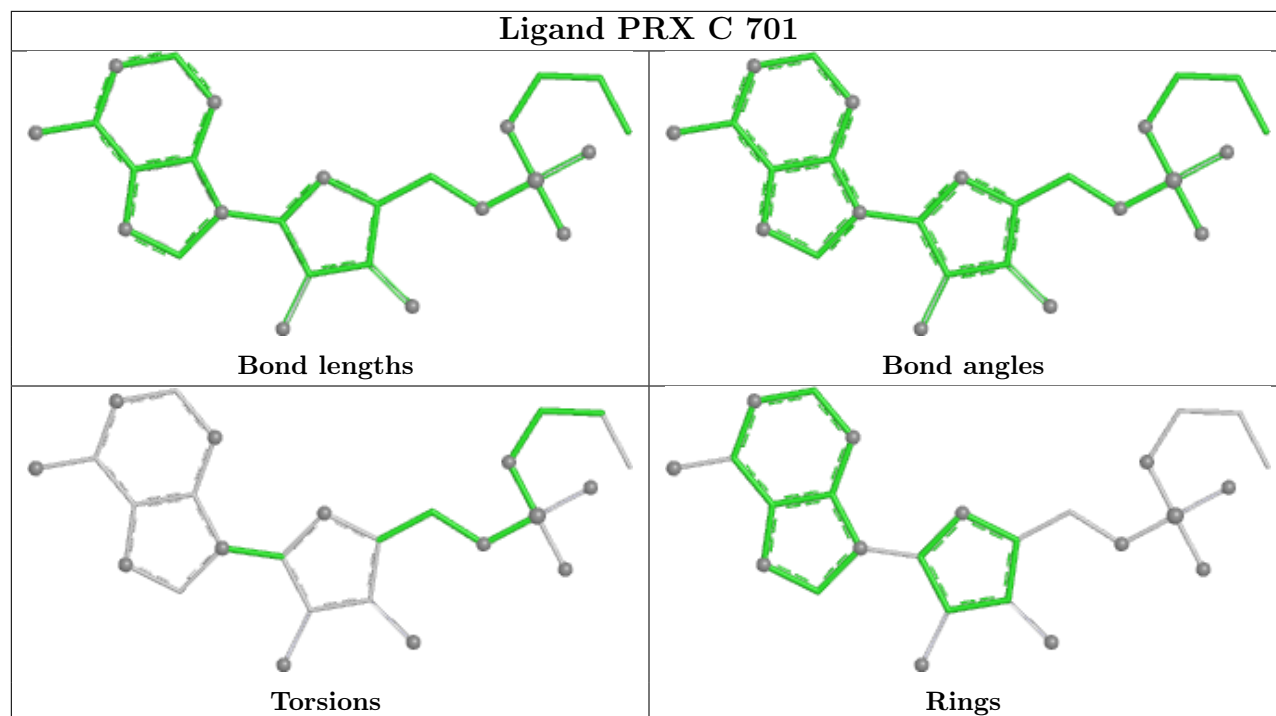
There are no ring outliers.

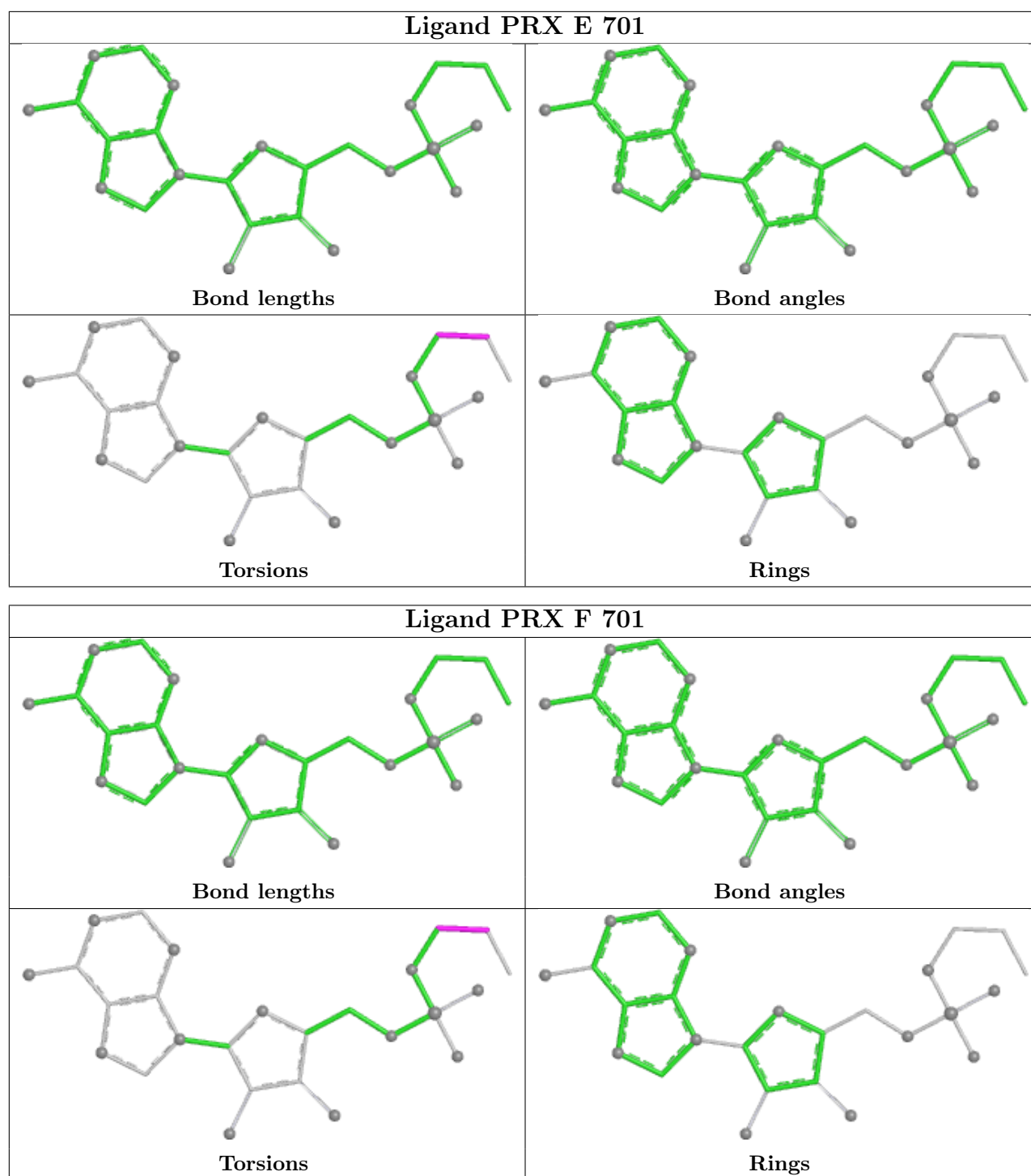
3 monomers are involved in 5 short contacts:

Mol	Chain	Res	Type	Clashes	Symm-Clashes
2	A	701	PRX	3	0
2	D	701	PRX	1	0
2	C	701	PRX	1	0

The following is a two-dimensional graphical depiction of Mogul quality analysis of bond lengths, bond angles, torsion angles, and ring geometry for all instances of the Ligand of Interest. In addition, ligands with molecular weight > 250 and outliers as shown on the validation Tables will also be included. For torsion angles, if less than 5% of the Mogul distribution of torsion angles is within 10 degrees of the torsion angle in question, then that torsion angle is considered an outlier. Any bond that is central to one or more torsion angles identified as an outlier by Mogul will be highlighted in the graph. For rings, the root-mean-square deviation (RMSD) between the ring in question and similar rings identified by Mogul is calculated over all ring torsion angles. If the average RMSD is greater than 60 degrees and the minimal RMSD between the ring in question and any Mogul-identified rings is also greater than 60 degrees, then that ring is considered an outlier. The outliers are highlighted in purple. The color gray indicates Mogul did not find sufficient equivalents in the CSD to analyse the geometry.







5.7 Other polymers [\(i\)](#)

There are no such residues in this entry.

5.8 Polymer linkage issues

There are no chain breaks in this entry.

6 Fit of model and data [i](#)

6.1 Protein, DNA and RNA chains [i](#)

In the following table, the column labelled ‘#RSRZ > 2’ contains the number (and percentage) of RSRZ outliers, followed by percent RSRZ outliers for the chain as percentile scores relative to all X-ray entries and entries of similar resolution. The OWAB column contains the minimum, median, 95th percentile and maximum values of the occupancy-weighted average B-factor per residue. The column labelled ‘Q < 0.9’ lists the number of (and percentage) of residues with an average occupancy less than 0.9.

Mol	Chain	Analysed	<RSRZ>	#RSRZ>2	OWAB(Å ²)	Q<0.9
1	A	622/685 (90%)	-0.34	4 (0%) 85 80	34, 57, 100, 145	1 (0%)
1	B	575/685 (83%)	-0.21	9 (1%) 70 61	43, 59, 123, 168	0
1	C	518/685 (75%)	-0.37	3 (0%) 85 80	44, 58, 82, 124	0
1	D	590/685 (86%)	-0.22	2 (0%) 90 86	45, 62, 107, 146	0
1	E	605/685 (88%)	-0.18	6 (0%) 79 72	36, 61, 118, 153	2 (0%)
1	F	589/685 (85%)	-0.02	7 (1%) 76 68	48, 73, 118, 173	0
All	All	3499/4110 (85%)	-0.22	31 (0%) 81 74	34, 61, 112, 173	3 (0%)

The worst 5 of 31 RSRZ outliers are listed below:

Mol	Chain	Res	Type	RSRZ
1	F	536	ASP	4.2
1	B	537	ASP	3.7
1	F	534	ARG	3.5
1	D	605	SER	3.3
1	B	615	VAL	3.2

6.2 Non-standard residues in protein, DNA, RNA chains [i](#)

There are no non-standard protein/DNA/RNA residues in this entry.

6.3 Carbohydrates [i](#)

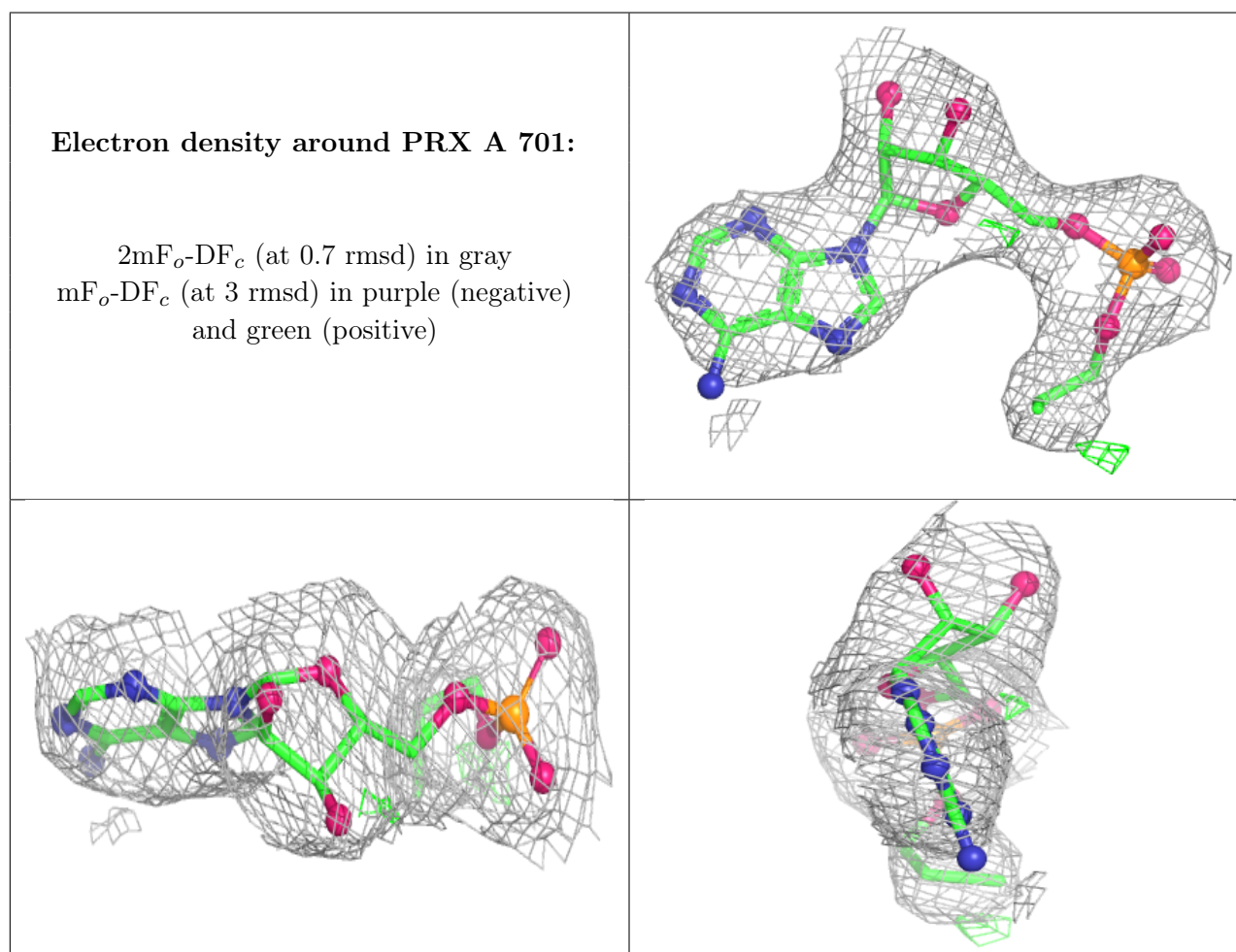
There are no oligosaccharides in this entry.

6.4 Ligands [i](#)

In the following table, the Atoms column lists the number of modelled atoms in the group and the number defined in the chemical component dictionary. The B-factors column lists the minimum, median, 95th percentile and maximum values of B factors of atoms in the group. The column labelled 'Q< 0.9' lists the number of atoms with occupancy less than 0.9.

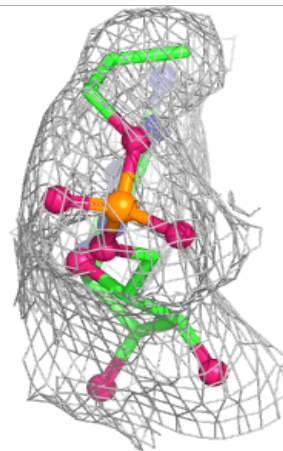
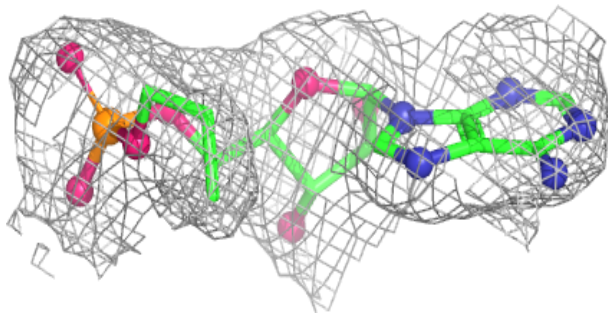
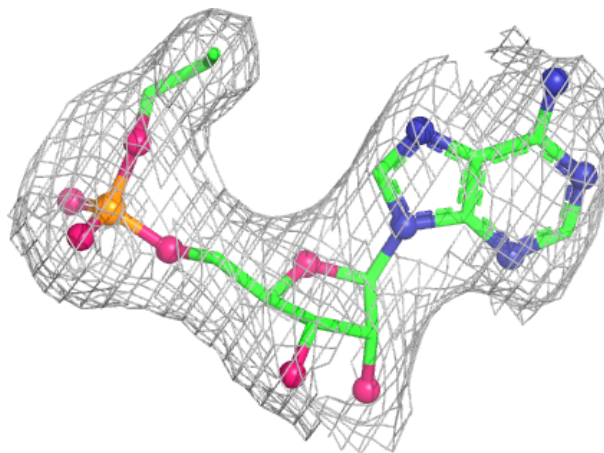
Mol	Type	Chain	Res	Atoms	RSCC	RSR	B-factors(Å ²)	Q<0.9
2	PRX	A	701	26/26	0.94	0.08	50,54,59,61	0
2	PRX	B	701	26/26	0.94	0.08	55,65,70,71	0
2	PRX	F	701	26/26	0.94	0.08	64,77,84,87	0
2	PRX	D	701	26/26	0.95	0.07	56,65,73,74	0
2	PRX	E	701	26/26	0.95	0.08	56,61,70,74	0
2	PRX	C	701	26/26	0.95	0.07	52,62,68,71	0

The following is a graphical depiction of the model fit to experimental electron density of all instances of the Ligand of Interest. In addition, ligands with molecular weight > 250 and outliers as shown on the geometry validation Tables will also be included. Each fit is shown from different orientation to approximate a three-dimensional view.



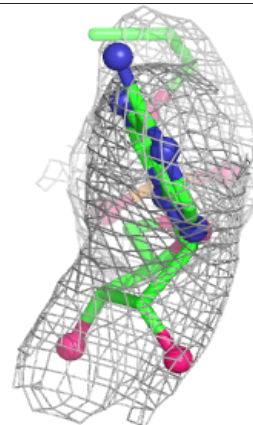
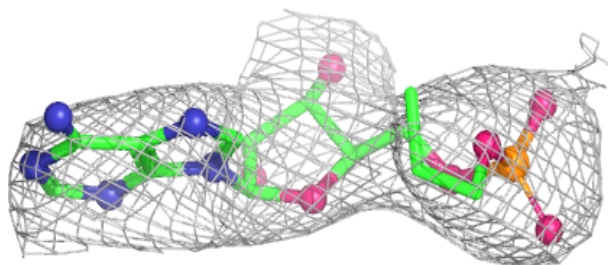
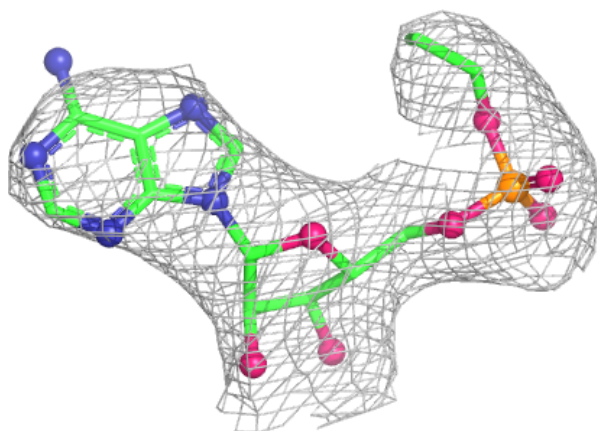
Electron density around PRX B 701:

$2mF_o-DF_c$ (at 0.7 rmsd) in gray
 mF_o-DF_c (at 3 rmsd) in purple (negative)
and green (positive)



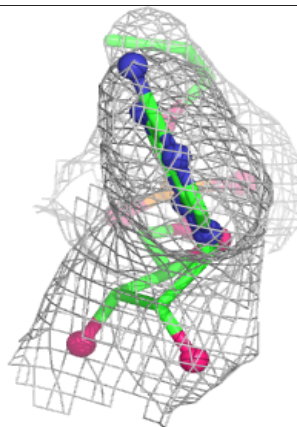
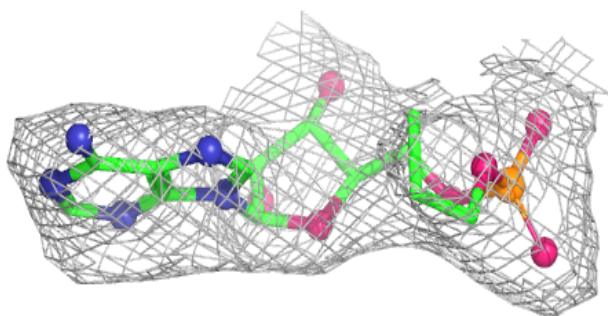
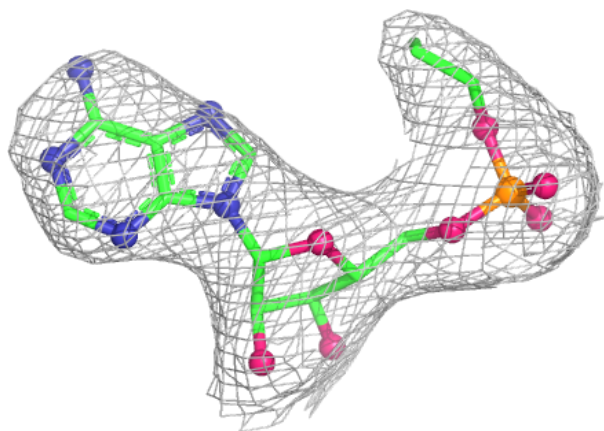
Electron density around PRX F 701:

$2mF_o-DF_c$ (at 0.7 rmsd) in gray
 mF_o-DF_c (at 3 rmsd) in purple (negative)
and green (positive)



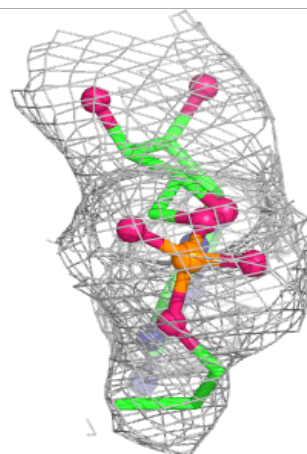
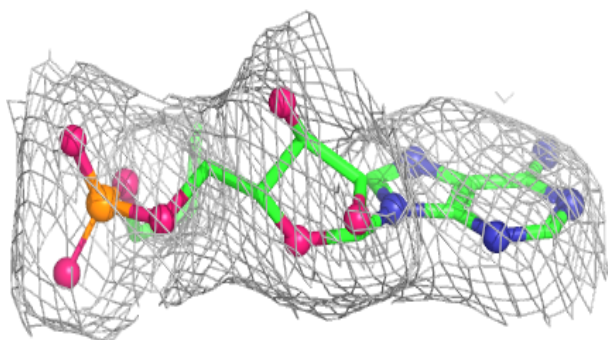
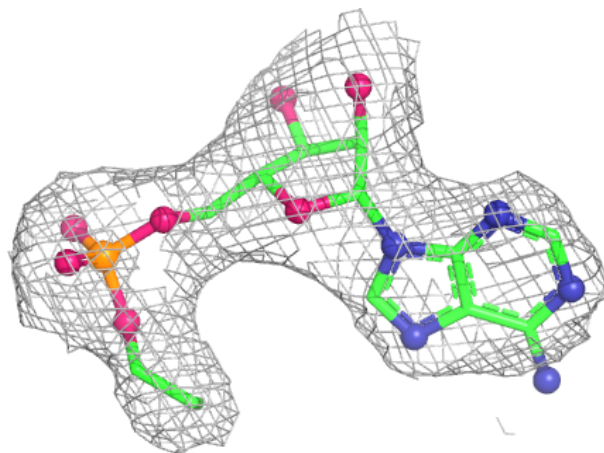
Electron density around PRX D 701:

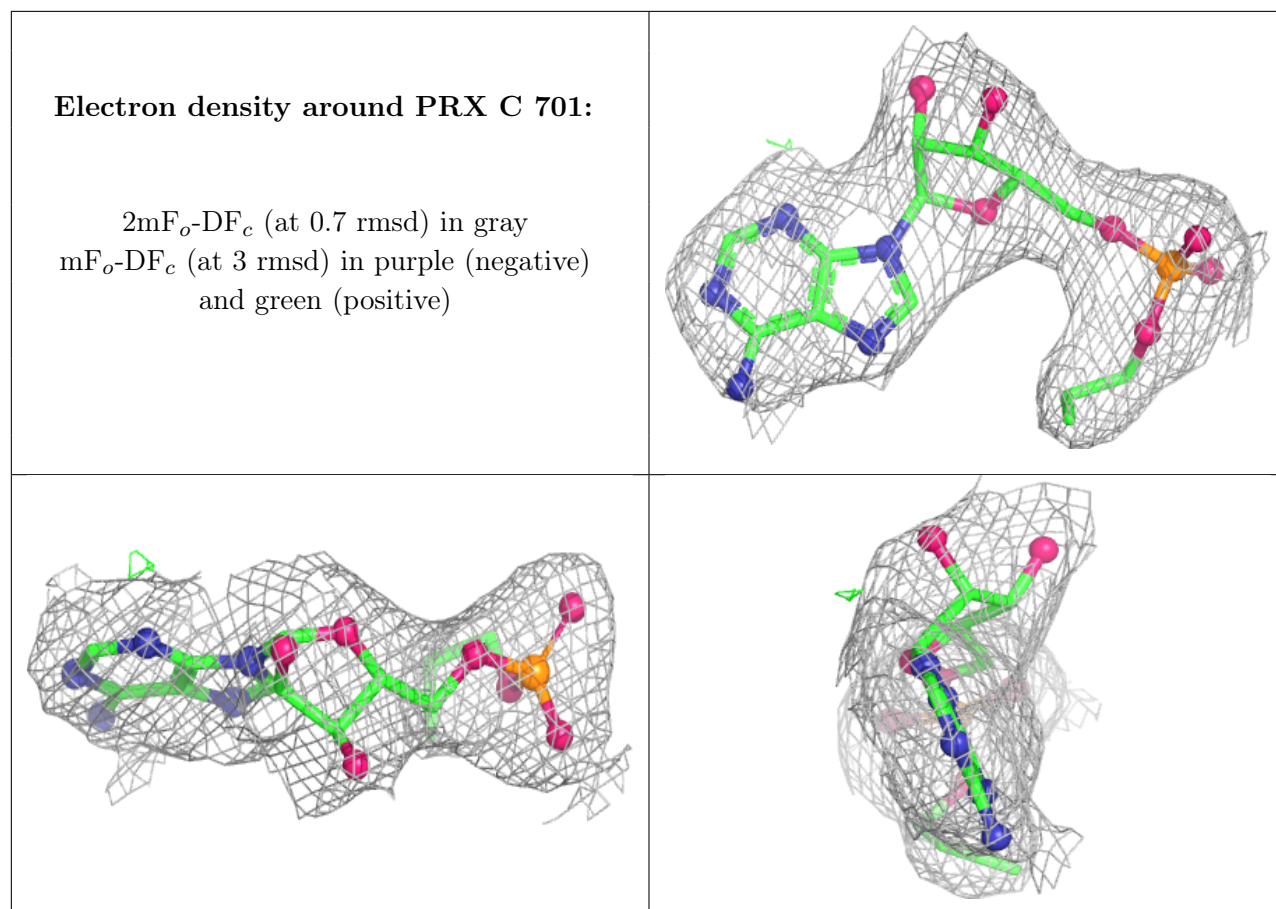
$2mF_o-DF_c$ (at 0.7 rmsd) in gray
 mF_o-DF_c (at 3 rmsd) in purple (negative)
and green (positive)



Electron density around PRX E 701:

$2mF_o-DF_c$ (at 0.7 rmsd) in gray
 mF_o-DF_c (at 3 rmsd) in purple (negative)
and green (positive)





6.5 Other polymers [i](#)

There are no such residues in this entry.