



wwPDB X-ray Structure Validation Summary Report ⓘ

Mar 5, 2026 – 02:02 AM UTC

PDB ID : 4KR3 / pdb_00004kr3
Title : Glycyl-tRNA synthetase mutant E71G in complex with tRNA-Gly
Authors : Qin, X.; Hao, Z.; Tian, Q.; Zhang, Z.; Zhou, C.; Xie, W.
Deposited on : 2013-05-16
Resolution : 3.23 Å(reported)

This is a wwPDB X-ray Structure Validation Summary Report for a publicly released PDB entry.

We welcome your comments at validation@mail.wwpdb.org

A user guide is available at

<https://www.wwpdb.org/validation/2017/XrayValidationReportHelp>

with specific help available everywhere you see the ⓘ symbol.

The types of validation reports are described at

<http://www.wwpdb.org/validation/2017/FAQs#types>.

The following versions of software and data (see [references ⓘ](#)) were used in the production of this report:

MolProbity : 4-5-2 with Phenix2.0
Mogul : 2022.3.0, CSD as543be (2022)
Xtrriage (Phenix) : 2.0
EDS : 3.0
Buster-report : wwPDB partial adaption of 1.1.7 (2018)
Percentile statistics : 20250101.v01 (using entries in the PDB archive January 1st 2025)
CCP4 : 9.0.010 (Gargrove)
Density-Fitness : 1.0.12
Ideal geometry (proteins) : Engh & Huber (2001)
Ideal geometry (DNA, RNA) : Parkinson et al. (1996)
Validation Pipeline (wwPDB-VP) : 2.49

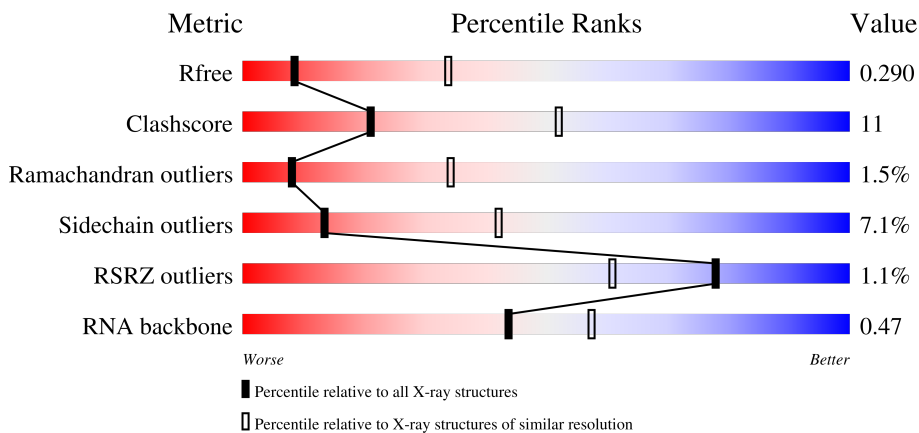
1 Overall quality at a glance

The following experimental techniques were used to determine the structure:

X-RAY DIFFRACTION



The reported resolution of this entry is 3.23 Å.

Percentile scores (ranging between 0-100) for global validation metrics of the entry are shown in the following graphic. The table shows the number of entries on which the scores are based.



Metric	Whole archive (#Entries)	Similar resolution (#Entries, resolution range(Å))
R_{free}	180053	2153 (3.28-3.20)
Clashscore	190562	2275 (3.28-3.20)
Ramachandran outliers	187476	2233 (3.28-3.20)
Sidechain outliers	187428	2232 (3.28-3.20)
RSRZ outliers	180081	2153 (3.28-3.20)
RNA backbone	3983	1047 (3.52-2.96)

The table below summarises the geometric issues observed across the polymeric chains and their fit to the electron density. The red, orange, yellow and green segments of the lower bar indicate the fraction of residues that contain outliers for ≥ 3 , 2, 1 and 0 types of geometric quality criteria respectively. A grey segment represents the fraction of residues that are not modelled. The numeric value for each fraction is indicated below the corresponding segment, with a dot representing fractions $\leq 5\%$. The upper red bar (where present) indicates the fraction of residues that have poor fit to the electron density. The numeric value is given above the bar.

Mol	Chain	Length	Quality of chain
1	A	637	 47% 24% 7% 22% 2%
2	C	74	 45% 42% 7% 4% 4%

2 Entry composition [i](#)

There are 5 unique types of molecules in this entry. The entry contains 5178 atoms, of which 0 are hydrogens and 0 are deuteriums.

In the tables below, the ZeroOcc column contains the number of atoms modelled with zero occupancy, the AltConf column contains the number of residues with at least one atom in alternate conformation and the Trace column contains the number of residues modelled with at most 2 atoms.

- Molecule 1 is a protein called Glycine-tRNA ligase.

Mol	Chain	Residues	Atoms					ZeroOcc	AltConf	Trace
			Total	C	N	O	S			
1	A	466	3632	2313	632	669	18	0	0	0

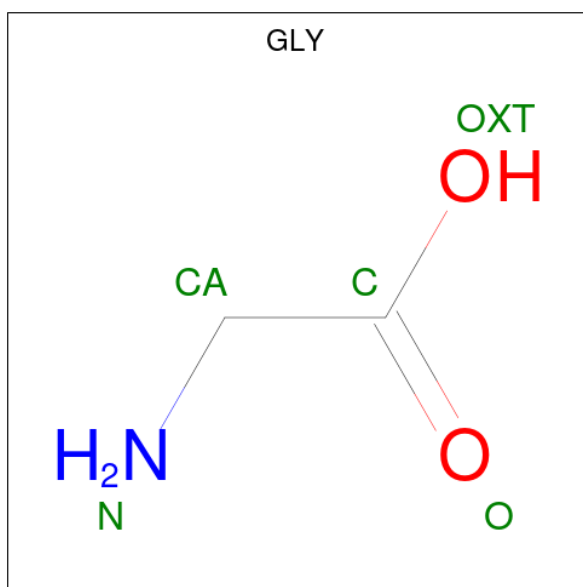
There are 12 discrepancies between the modelled and reference sequences:

Chain	Residue	Modelled	Actual	Comment	Reference
A	57	MET	-	expression tag	UNP P41250
A	58	ALA	-	expression tag	UNP P41250
A	59	SER	-	expression tag	UNP P41250
A	71	GLY	GLU	engineered mutation	UNP P41250
A	686	LEU	-	expression tag	UNP P41250
A	687	GLU	-	expression tag	UNP P41250
A	688	HIS	-	expression tag	UNP P41250
A	689	HIS	-	expression tag	UNP P41250
A	690	HIS	-	expression tag	UNP P41250
A	691	HIS	-	expression tag	UNP P41250
A	692	HIS	-	expression tag	UNP P41250
A	693	HIS	-	expression tag	UNP P41250

- Molecule 2 is a RNA chain called Gly-tRNA-CCC.

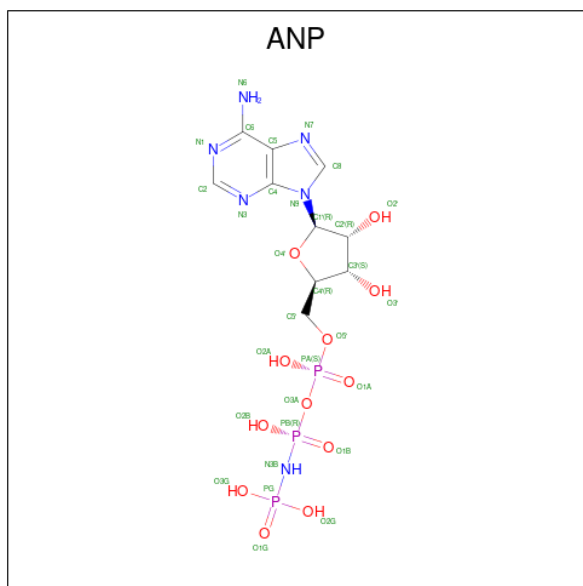
Mol	Chain	Residues	Atoms					ZeroOcc	AltConf	Trace
			Total	C	N	O	P			
2	C	70	1496	662	257	505	72	0	0	0

- Molecule 3 is GLYCINE (CCD ID: GLY) (formula: C₂H₅NO₂).



Mol	Chain	Residues	Atoms				ZeroOcc	AltConf
			Total	C	N	O		
3	A	1	5	2	1	2	0	0

- Molecule 4 is PHOSPHOAMINOPHOSPHONIC ACID-ADENYLATE ESTER (CCD ID: ANP) (formula: $C_{10}H_{17}N_6O_{12}P_3$).



Mol	Chain	Residues	Atoms					ZeroOcc	AltConf
			Total	C	N	O	P		
4	A	1	31	10	6	12	3	0	0

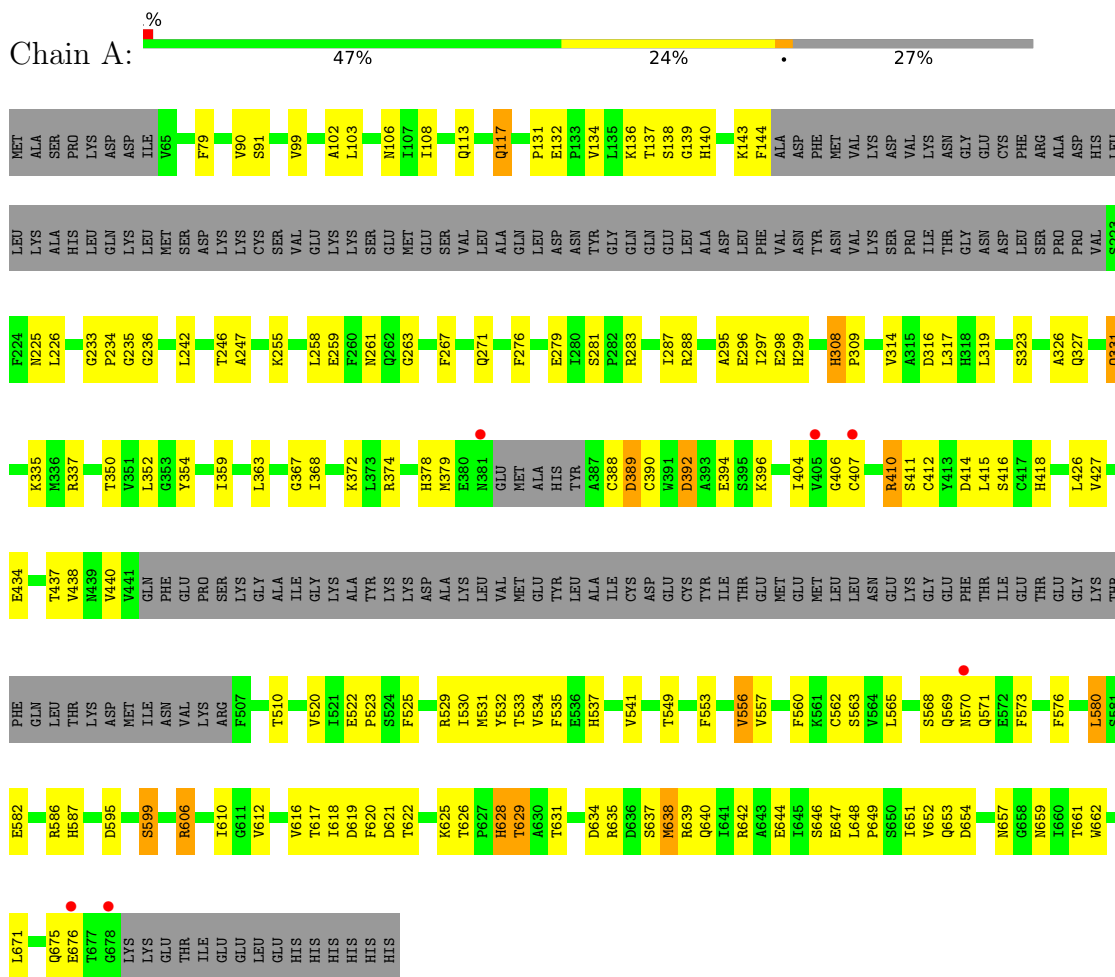
- Molecule 5 is water.

Mol	Chain	Residues	Atoms	ZeroOcc	AltConf
5	A	12	Total O 12 12	0	0
5	C	2	Total O 2 2	0	0

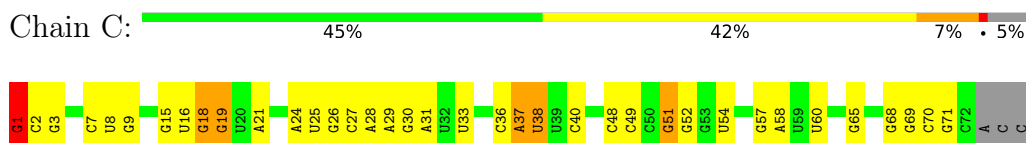
3 Residue-property plots [i](#)

These plots are drawn for all protein, RNA, DNA and oligosaccharide chains in the entry. The first graphic for a chain summarises the proportions of the various outlier classes displayed in the second graphic. The second graphic shows the sequence view annotated by issues in geometry and electron density. Residues are color-coded according to the number of geometric quality criteria for which they contain at least one outlier: green = 0, yellow = 1, orange = 2 and red = 3 or more. A red dot above a residue indicates a poor fit to the electron density ($RSRZ > 2$). Stretches of 2 or more consecutive residues without any outlier are shown as a green connector. Residues present in the sample, but not in the model, are shown in grey.

- Molecule 1: Glycine-tRNA ligase



- Molecule 2: Gly-tRNA-CCC



4 Data and refinement statistics

Property	Value	Source
Space group	P 21 21 2	Depositor
Cell constants a, b, c, α , β , γ	134.83Å 87.41Å 80.59Å 90.00° 90.00° 90.00°	Depositor
Resolution (Å)	38.42 – 3.23 38.42 – 3.23	Depositor EDS
% Data completeness (in resolution range)	89.1 (38.42-3.23) 88.5 (38.42-3.23)	Depositor EDS
R_{merge}	0.14	Depositor
R_{sym}	(Not available)	Depositor
$\langle I/\sigma(I) \rangle$ ¹	3.04 (at 3.25Å)	Xtrriage
Refinement program	PHENIX (phenix.refine: 1.8_1069)	Depositor
R, R_{free}	0.239 , 0.292 0.240 , 0.290	Depositor DCC
R_{free} test set	701 reflections (2.28%)	wwPDB-VP
Wilson B-factor (Å ²)	82.6	Xtrriage
Anisotropy	0.252	Xtrriage
Bulk solvent k_{sol} (e/Å ³), B_{sol} (Å ²)	0.31 , 43.0	EDS
L-test for twinning ²	$\langle L \rangle = 0.50$, $\langle L^2 \rangle = 0.33$	Xtrriage
Estimated twinning fraction	No twinning to report.	Xtrriage
F_o, F_c correlation	0.90	EDS
Total number of atoms	5178	wwPDB-VP
Average B, all atoms (Å ²)	85.0	wwPDB-VP

Xtrriage's analysis on translational NCS is as follows: *The largest off-origin peak in the Patterson function is 3.61% of the height of the origin peak. No significant pseudotranslation is detected.*

¹Intensities estimated from amplitudes.

²Theoretical values of $\langle |L| \rangle$, $\langle L^2 \rangle$ for acentric reflections are 0.5, 0.333 respectively for untwinned datasets, and 0.375, 0.2 for perfectly twinned datasets.

5 Model quality [i](#)

5.1 Standard geometry [i](#)

Bond lengths and bond angles in the following residue types are not validated in this section: GTP, ANP

The Z score for a bond length (or angle) is the number of standard deviations the observed value is removed from the expected value. A bond length (or angle) with $|Z| > 5$ is considered an outlier worth inspection. RMSZ is the root-mean-square of all Z scores of the bond lengths (or angles).

Mol	Chain	Bond lengths		Bond angles	
		RMSZ	# $ Z > 5$	RMSZ	# $ Z > 5$
1	A	0.51	0/3716	0.91	9/5033 (0.2%)
2	C	0.15	0/1632	0.32	0/2541
All	All	0.43	0/5348	0.76	9/7574 (0.1%)

There are no bond length outliers.

The worst 5 of 9 bond angle outliers are listed below:

Mol	Chain	Res	Type	Atoms	Z	Observed(°)	Ideal(°)
1	A	626	THR	CA-C-N	-5.71	113.36	120.79
1	A	626	THR	C-N-CA	-5.71	113.36	120.79
1	A	434	GLU	CA-C-N	5.62	125.62	119.89
1	A	434	GLU	C-N-CA	5.62	125.62	119.89
1	A	236	GLY	N-CA-C	5.47	126.15	113.18

There are no chirality outliers.

There are no planarity outliers.

5.2 Too-close contacts [i](#)

In the following table, the Non-H and H(model) columns list the number of non-hydrogen atoms and hydrogen atoms in the chain respectively. The H(added) column lists the number of hydrogen atoms added and optimized by MolProbity. The Clashes column lists the number of clashes within the asymmetric unit, whereas Symm-Clashes lists symmetry-related clashes.

Mol	Chain	Non-H	H(model)	H(added)	Clashes	Symm-Clashes
1	A	3632	0	3495	83	0
2	C	1496	0	754	23	0
3	A	5	0	2	0	0
4	A	31	0	13	2	0

Continued on next page...

Continued from previous page...

Mol	Chain	Non-H	H(model)	H(added)	Clashes	Symm-Clashes
5	A	12	0	0	0	0
5	C	2	0	0	0	0
All	All	5178	0	4264	103	0

The all-atom clashscore is defined as the number of clashes found per 1000 atoms (including hydrogen atoms). The all-atom clashscore for this structure is 11.

The worst 5 of 103 close contacts within the same asymmetric unit are listed below, sorted by their clash magnitude.

Atom-1	Atom-2	Interatomic distance (Å)	Clash overlap (Å)
2:C:54:U:H3	2:C:58:A:H2	1.24	0.81
4:A:702:ANP:O3A	4:A:702:ANP:O3G	1.99	0.79
1:A:412:CYS:HG	1:A:416:SER:HG	1.31	0.78
2:C:30:G:H1	2:C:40:C:H42	1.45	0.65
1:A:372:LYS:HB3	1:A:396:LYS:HB3	1.80	0.63

There are no symmetry-related clashes.

5.3 Torsion angles [i](#)

5.3.1 Protein backbone [i](#)

In the following table, the Percentiles column shows the percent Ramachandran outliers of the chain as a percentile score with respect to all X-ray entries followed by that with respect to entries of similar resolution.

The Analysed column shows the number of residues for which the backbone conformation was analysed, and the total number of residues.

Mol	Chain	Analysed	Favoured	Allowed	Outliers	Percentiles
1	A	458/637 (72%)	420 (92%)	31 (7%)	7 (2%)	8 34

5 of 7 Ramachandran outliers are listed below:

Mol	Chain	Res	Type
1	A	389	ASP
1	A	379	MET
1	A	569	GLN
1	A	671	LEU
1	A	234	PRO

5.3.2 Protein sidechains [i](#)

In the following table, the Percentiles column shows the percent sidechain outliers of the chain as a percentile score with respect to all X-ray entries followed by that with respect to entries of similar resolution.

The Analysed column shows the number of residues for which the sidechain conformation was analysed, and the total number of residues.

Mol	Chain	Analysed	Rotameric	Outliers	Percentiles
1	A	380/555 (68%)	353 (93%)	27 (7%)	13 42

5 of 27 residues with a non-rotameric sidechain are listed below:

Mol	Chain	Res	Type
1	A	404	ILE
1	A	556	VAL
1	A	654	ASP
1	A	427	VAL
1	A	580	LEU

Sometimes sidechains can be flipped to improve hydrogen bonding and reduce clashes. 5 of 8 such sidechains are listed below:

Mol	Chain	Res	Type
1	A	675	GLN
1	A	640	GLN
1	A	261	ASN
1	A	225	ASN
1	A	547	GLN

5.3.3 RNA [i](#)

Mol	Chain	Analysed	Backbone Outliers	Pucker Outliers
2	C	69/74 (93%)	13 (18%)	1 (1%)

5 of 13 RNA backbone outliers are listed below:

Mol	Chain	Res	Type
2	C	9	G
2	C	18	G
2	C	19	G
2	C	21	A
2	C	33	U

All (1) RNA pucker outliers are listed below:

Mol	Chain	Res	Type
2	C	1	GTP

5.4 Non-standard residues in protein, DNA, RNA chains [i](#)

1 non-standard protein/DNA/RNA residue is modelled in this entry.

In the following table, the Counts columns list the number of bonds (or angles) for which Mogul statistics could be retrieved, the number of bonds (or angles) that are observed in the model and the number of bonds (or angles) that are defined in the Chemical Component Dictionary. The Link column lists molecule types, if any, to which the group is linked. The Z score for a bond length (or angle) is the number of standard deviations the observed value is removed from the expected value. A bond length (or angle) with $|Z| > 2$ is considered an outlier worth inspection. RMSZ is the root-mean-square of all Z scores of the bond lengths (or angles).

Mol	Type	Chain	Res	Link	Bond lengths			Bond angles		
					Counts	RMSZ	# Z > 2	Counts	RMSZ	# Z > 2
2	GTP	C	1	2	33,34,34	2.87	13 (39%)	50,54,54	2.01	11 (22%)

In the following table, the Chirals column lists the number of chiral outliers, the number of chiral centers analysed, the number of these observed in the model and the number defined in the Chemical Component Dictionary. Similar counts are reported in the Torsion and Rings columns. '-' means no outliers of that kind were identified.

Mol	Type	Chain	Res	Link	Chirals	Torsions	Rings
2	GTP	C	1	2	-	7/22/38/38	0/3/3/3

The worst 5 of 13 bond length outliers are listed below:

Mol	Chain	Res	Type	Atoms	Z	Observed(Å)	Ideal(Å)
2	C	1	GTP	O6-C6	9.55	1.41	1.23
2	C	1	GTP	C2'-C3'	-5.00	1.39	1.53
2	C	1	GTP	PB-O3A	-4.75	1.54	1.59
2	C	1	GTP	C2-N2	4.73	1.45	1.34
2	C	1	GTP	C5-N7	-4.25	1.30	1.39

The worst 5 of 11 bond angle outliers are listed below:

Mol	Chain	Res	Type	Atoms	Z	Observed(°)	Ideal(°)
2	C	1	GTP	N9-C4-N3	5.95	137.84	125.95
2	C	1	GTP	C8-N7-C5	5.39	113.87	104.26
2	C	1	GTP	C5-C4-N3	-5.02	120.39	128.39

Continued on next page...

Continued from previous page...

Mol	Chain	Res	Type	Atoms	Z	Observed(°)	Ideal(°)
2	C	1	GTP	C2-N3-C4	4.21	119.55	112.30
2	C	1	GTP	C6-C5-N7	3.81	137.22	130.29

There are no chirality outliers.

5 of 7 torsion outliers are listed below:

Mol	Chain	Res	Type	Atoms
2	C	1	GTP	C5'-O5'-PA-O3A
2	C	1	GTP	C5'-O5'-PA-O1A
2	C	1	GTP	C5'-O5'-PA-O2A
2	C	1	GTP	O4'-C4'-C5'-O5'
2	C	1	GTP	C3'-C4'-C5'-O5'

There are no ring outliers.

1 monomer is involved in 3 short contacts:

Mol	Chain	Res	Type	Clashes	Symm-Clashes
2	C	1	GTP	3	0

5.5 Carbohydrates [i](#)

There are no oligosaccharides in this entry.

5.6 Ligand geometry [i](#)

2 ligands are modelled in this entry.

In the following table, the Counts columns list the number of bonds (or angles) for which Mogul statistics could be retrieved, the number of bonds (or angles) that are observed in the model and the number of bonds (or angles) that are defined in the Chemical Component Dictionary. The Link column lists molecule types, if any, to which the group is linked. The Z score for a bond length (or angle) is the number of standard deviations the observed value is removed from the expected value. A bond length (or angle) with $|Z| > 2$ is considered an outlier worth inspection. RMSZ is the root-mean-square of all Z scores of the bond lengths (or angles).

Mol	Type	Chain	Res	Link	Bond lengths			Bond angles		
					Counts	RMSZ	$\# Z > 2$	Counts	RMSZ	$\# Z > 2$
4	ANP	A	702	-	33,33,33	2.34	10 (30%)	45,52,52	2.84	13 (28%)
3	GLY	A	701	-	4,4,4	1.44	1 (25%)	3,4,4	1.36	0

In the following table, the Chirals column lists the number of chiral outliers, the number of chiral centers analysed, the number of these observed in the model and the number defined in the Chemical Component Dictionary. Similar counts are reported in the Torsion and Rings columns. '-' means no outliers of that kind were identified.

Mol	Type	Chain	Res	Link	Chirals	Torsions	Rings
4	ANP	A	702	-	-	10/18/38/38	0/3/3/3
3	GLY	A	701	-	-	2/2/2/2	-

The worst 5 of 11 bond length outliers are listed below:

Mol	Chain	Res	Type	Atoms	Z	Observed(Å)	Ideal(Å)
4	A	702	ANP	PB-O1B	8.79	1.59	1.46
4	A	702	ANP	C8-N7	4.37	1.40	1.31
4	A	702	ANP	C6-N6	3.59	1.43	1.34
4	A	702	ANP	C5-N7	3.26	1.45	1.39
4	A	702	ANP	C4-N9	3.22	1.44	1.37

The worst 5 of 13 bond angle outliers are listed below:

Mol	Chain	Res	Type	Atoms	Z	Observed(°)	Ideal(°)
4	A	702	ANP	O1B-PB-N3B	-12.41	93.49	111.77
4	A	702	ANP	C5-C4-N3	-5.22	119.53	126.72
4	A	702	ANP	N3-C2-N1	-5.07	120.90	128.58
4	A	702	ANP	O2B-PB-O1B	5.05	120.70	109.87
4	A	702	ANP	O2B-PB-O3A	4.34	119.13	104.64

There are no chirality outliers.

5 of 12 torsion outliers are listed below:

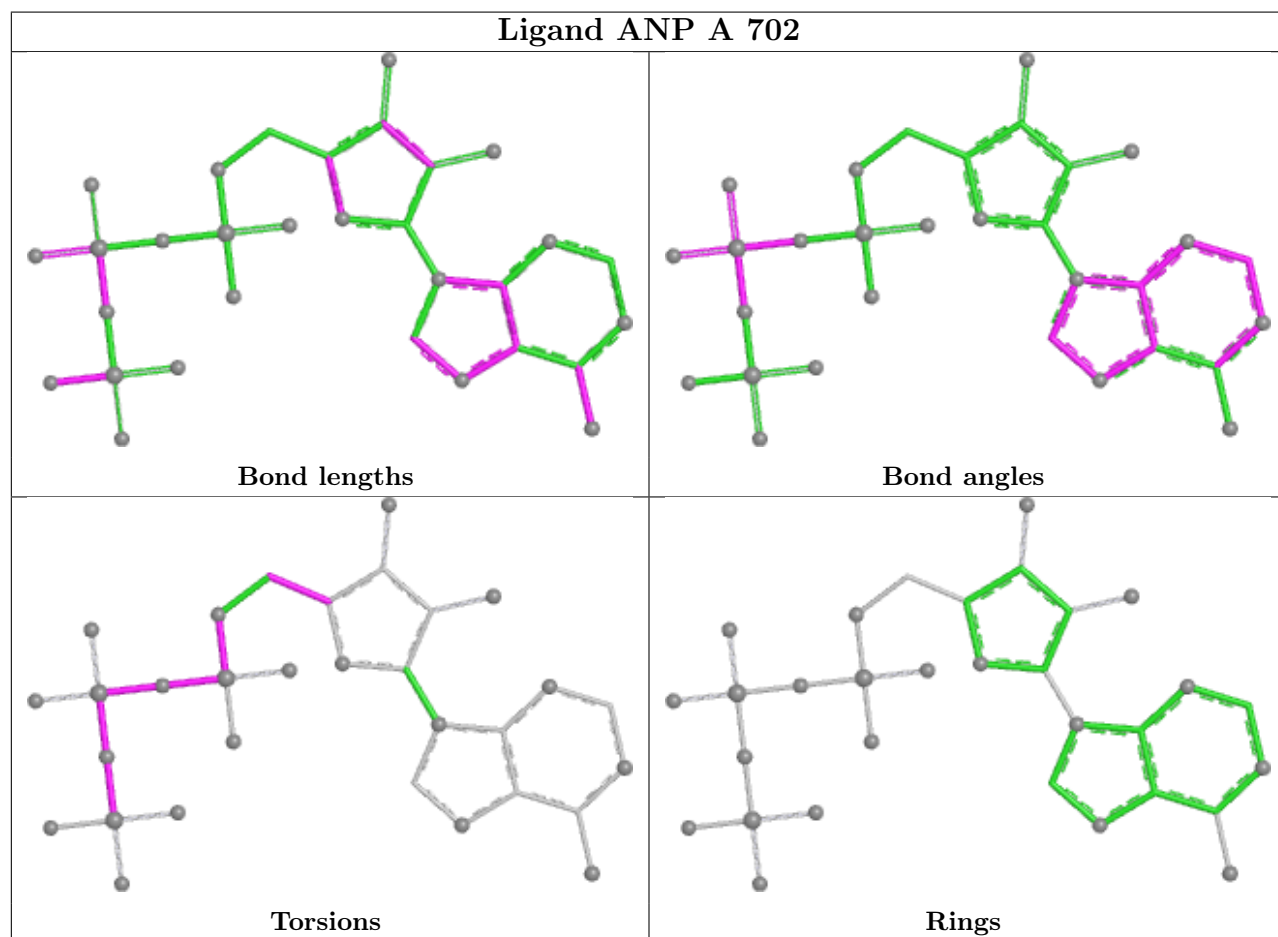
Mol	Chain	Res	Type	Atoms
3	A	701	GLY	O-C-CA-N
4	A	702	ANP	PB-N3B-PG-O1G
4	A	702	ANP	PG-N3B-PB-O1B
4	A	702	ANP	PG-N3B-PB-O3A
4	A	702	ANP	C5'-O5'-PA-O1A

There are no ring outliers.

1 monomer is involved in 2 short contacts:

Mol	Chain	Res	Type	Clashes	Symm-Clashes
4	A	702	ANP	2	0

The following is a two-dimensional graphical depiction of Mogul quality analysis of bond lengths, bond angles, torsion angles, and ring geometry for all instances of the Ligand of Interest. In addition, ligands with molecular weight > 250 and outliers as shown on the validation Tables will also be included. For torsion angles, if less than 5% of the Mogul distribution of torsion angles is within 10 degrees of the torsion angle in question, then that torsion angle is considered an outlier. Any bond that is central to one or more torsion angles identified as an outlier by Mogul will be highlighted in the graph. For rings, the root-mean-square deviation (RMSD) between the ring in question and similar rings identified by Mogul is calculated over all ring torsion angles. If the average RMSD is greater than 60 degrees and the minimal RMSD between the ring in question and any Mogul-identified rings is also greater than 60 degrees, then that ring is considered an outlier. The outliers are highlighted in purple. The color gray indicates Mogul did not find sufficient equivalents in the CSD to analyse the geometry.



5.7 Other polymers [\(i\)](#)

There are no such residues in this entry.

5.8 Polymer linkage issues [\(i\)](#)

There are no chain breaks in this entry.

6 Fit of model and data [i](#)

6.1 Protein, DNA and RNA chains [i](#)

In the following table, the column labelled ‘#RSRZ> 2’ contains the number (and percentage) of RSRZ outliers, followed by percent RSRZ outliers for the chain as percentile scores relative to all X-ray entries and entries of similar resolution. The OWAB column contains the minimum, median, 95th percentile and maximum values of the occupancy-weighted average B-factor per residue. The column labelled ‘Q< 0.9’ lists the number of (and percentage) of residues with an average occupancy less than 0.9.

Mol	Chain	Analysed	<RSRZ>	#RSRZ>2	OWAB(Å ²)	Q<0.9
1	A	466/637 (73%)	0.17	6 (1%) 75 56	51, 76, 106, 140	0
2	C	69/74 (93%)	0.39	0 100 100	65, 100, 142, 159	0
All	All	535/711 (75%)	0.20	6 (1%) 78 61	51, 78, 117, 159	0

The worst 5 of 6 RSRZ outliers are listed below:

Mol	Chain	Res	Type	RSRZ
1	A	407	CYS	2.5
1	A	678	GLY	2.3
1	A	570	ASN	2.3
1	A	405	VAL	2.3
1	A	676	GLU	2.1

6.2 Non-standard residues in protein, DNA, RNA chains [i](#)

In the following table, the Atoms column lists the number of modelled atoms in the group and the number defined in the chemical component dictionary. The B-factors column lists the minimum, median, 95th percentile and maximum values of B factors of atoms in the group. The column labelled ‘Q< 0.9’ lists the number of atoms with occupancy less than 0.9.

Mol	Type	Chain	Res	Atoms	RSCC	RSR	B-factors(Å ²)	Q<0.9
2	GTP	C	1	32/32	0.81	0.14	113,120,169,173	0

6.3 Carbohydrates [i](#)

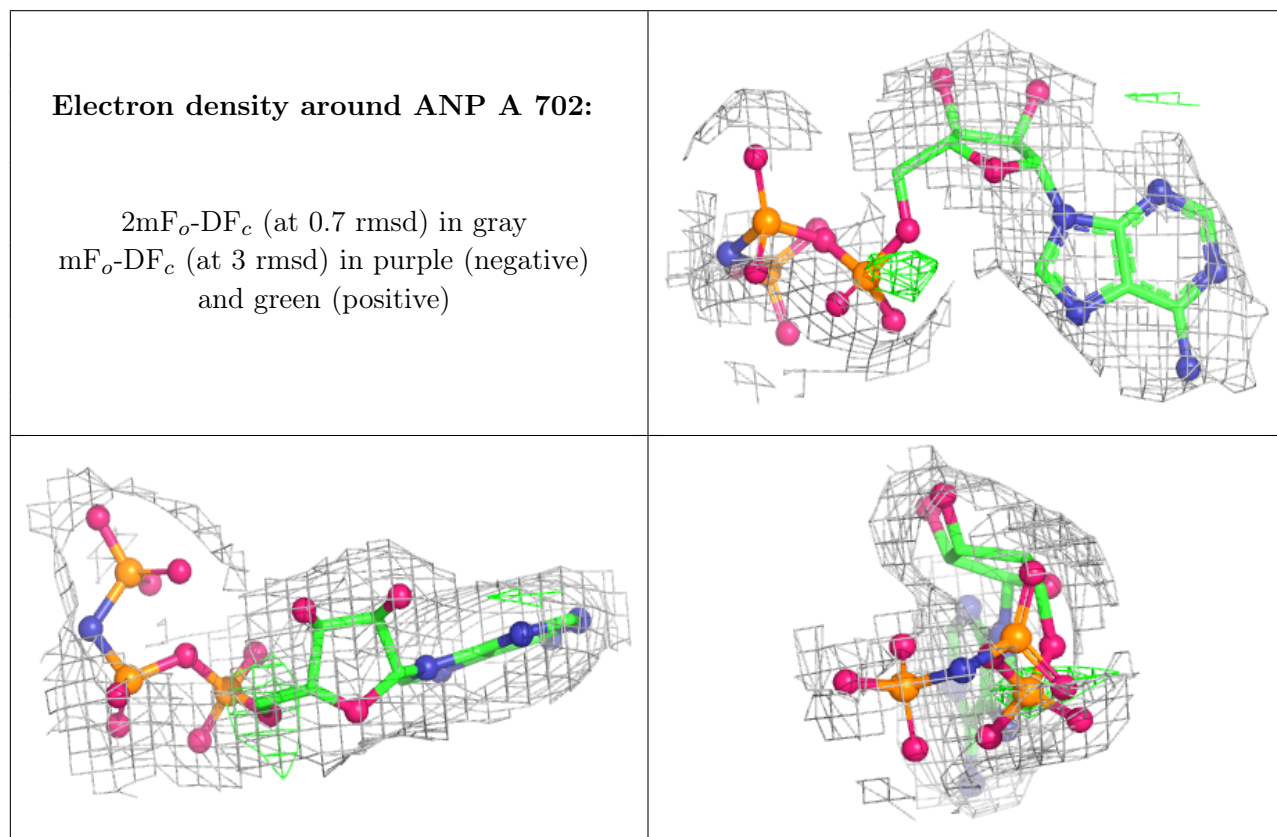
There are no oligosaccharides in this entry.

6.4 Ligands [i](#)

In the following table, the Atoms column lists the number of modelled atoms in the group and the number defined in the chemical component dictionary. The B-factors column lists the minimum, median, 95th percentile and maximum values of B factors of atoms in the group. The column labelled 'Q<0.9' lists the number of atoms with occupancy less than 0.9.

Mol	Type	Chain	Res	Atoms	RSCC	RSR	B-factors(Å ²)	Q<0.9
3	GLY	A	701	5/5	0.79	0.13	110,111,111,111	0
4	ANP	A	702	31/31	0.87	0.10	64,69,239,331	0

The following is a graphical depiction of the model fit to experimental electron density of all instances of the Ligand of Interest. In addition, ligands with molecular weight > 250 and outliers as shown on the geometry validation Tables will also be included. Each fit is shown from different orientation to approximate a three-dimensional view.



6.5 Other polymers [i](#)

There are no such residues in this entry.