



wwPDB X-ray Structure Validation Summary Report ⓘ

Mar 5, 2026 – 08:28 PM UTC

PDB ID : 6LDB / pdb_00006ldb
Title : Structure of Bifidobacterium dentium beta-glucuronidase complexed with uronic isofagomine
Authors : Lin, H.-Y.; Hsieh, T.-J.; Lin, C.-H.
Deposited on : 2019-11-20
Resolution : 1.65 Å (reported)

This is a wwPDB X-ray Structure Validation Summary Report for a publicly released PDB entry.

We welcome your comments at validation@mail.wwpdb.org

A user guide is available at

<https://www.wwpdb.org/validation/2017/XrayValidationReportHelp>

with specific help available everywhere you see the ⓘ symbol.

The types of validation reports are described at

<http://www.wwpdb.org/validation/2017/FAQs#types>.

The following versions of software and data (see [references ⓘ](#)) were used in the production of this report:

MolProbity : 4-5-2 with Phenix2.0
Mogul : 2022.3.0, CSD as543be (2022)
Xtrriage (Phenix) : 2.0
EDS : 3.0
Buster-report : wwPDB partial adaption of 1.1.7 (2018)
Percentile statistics : 20250101.v01 (using entries in the PDB archive January 1st 2025)
CCP4 : 9.0.010 (Gargrove)
Density-Fitness : 1.0.12
Ideal geometry (proteins) : Engh & Huber (2001)
Ideal geometry (DNA, RNA) : Parkinson et al. (1996)
Validation Pipeline (wwPDB-VP) : 2.49

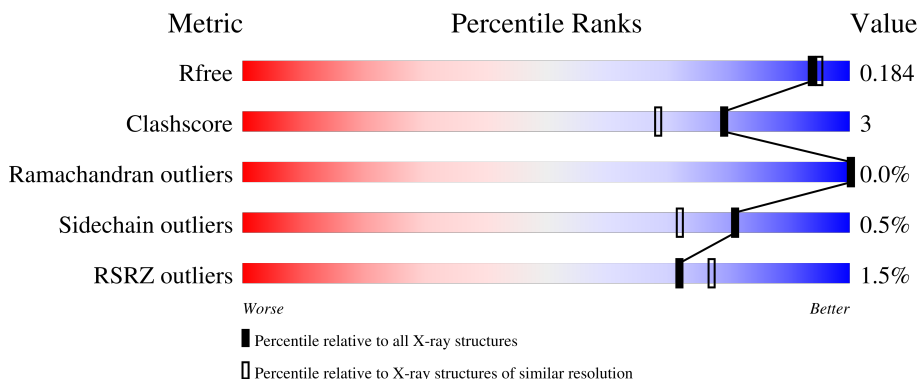
1 Overall quality at a glance

The following experimental techniques were used to determine the structure:

X-RAY DIFFRACTION

The reported resolution of this entry is 1.65 Å.

Percentile scores (ranging between 0-100) for global validation metrics of the entry are shown in the following graphic. The table shows the number of entries on which the scores are based.



Metric	Whole archive (#Entries)	Similar resolution (#Entries, resolution range(Å))
R_{free}	180053	2563 (1.66-1.66)
Clashscore	190562	2662 (1.66-1.66)
Ramachandran outliers	187476	2621 (1.66-1.66)
Sidechain outliers	187428	2621 (1.66-1.66)
RSRZ outliers	180081	2564 (1.66-1.66)

The table below summarises the geometric issues observed across the polymeric chains and their fit to the electron density. The red, orange, yellow and green segments of the lower bar indicate the fraction of residues that contain outliers for ≥ 3 , 2, 1 and 0 types of geometric quality criteria respectively. A grey segment represents the fraction of residues that are not modelled. The numeric value for each fraction is indicated below the corresponding segment, with a dot representing fractions $\leq 5\%$. The upper red bar (where present) indicates the fraction of residues that have poor fit to the electron density. The numeric value is given above the bar.

Mol	Chain	Length	Quality of chain
1	A	670	
1	B	670	
1	C	670	
1	D	670	

2 Entry composition [i](#)

There are 3 unique types of molecules in this entry. The entry contains 22393 atoms, of which 0 are hydrogens and 0 are deuteriums.

In the tables below, the ZeroOcc column contains the number of atoms modelled with zero occupancy, the AltConf column contains the number of residues with at least one atom in alternate conformation and the Trace column contains the number of residues modelled with at most 2 atoms.

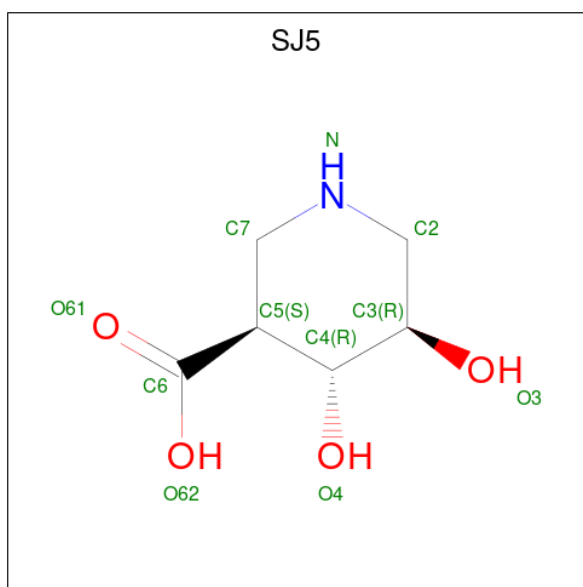
- Molecule 1 is a protein called LacZ1 Beta-galactosidase.

Mol	Chain	Residues	Atoms					ZeroOcc	AltConf	Trace
			Total	C	N	O	S			
1	A	620	4915	3116	857	922	20	0	1	0
1	B	620	4915	3116	857	922	20	0	1	0
1	C	620	4915	3116	857	922	20	0	1	0
1	D	620	4915	3116	857	922	20	0	1	0

There are 8 discrepancies between the modelled and reference sequences:

Chain	Residue	Modelled	Actual	Comment	Reference
A	-1	ASN	-	expression tag	UNP D2Q7B1
A	0	GLY	-	expression tag	UNP D2Q7B1
B	-1	ASN	-	expression tag	UNP D2Q7B1
B	0	GLY	-	expression tag	UNP D2Q7B1
C	-1	ASN	-	expression tag	UNP D2Q7B1
C	0	GLY	-	expression tag	UNP D2Q7B1
D	-1	ASN	-	expression tag	UNP D2Q7B1
D	0	GLY	-	expression tag	UNP D2Q7B1

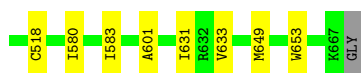
- Molecule 2 is (3S,4R,5R)-4,5-dihydropiperidine-3-carboxylic acid (CCD ID: SJ5) (formula: C₆H₁₁NO₄) (labeled as "Ligand of Interest" by depositor).



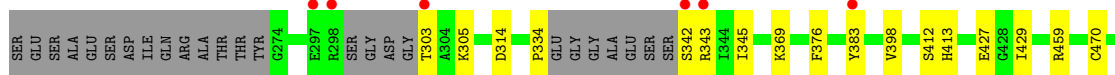
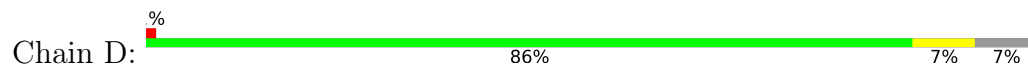
Mol	Chain	Residues	Atoms				ZeroOcc	AltConf
			Total	C	N	O		
2	A	1	11	6	1	4	0	0
2	B	1	11	6	1	4	0	0
2	C	1	11	6	1	4	0	0
2	D	1	11	6	1	4	0	0

- Molecule 3 is water.

Mol	Chain	Residues	Atoms		ZeroOcc	AltConf
			Total	O		
3	A	774	774	774	0	0
3	B	719	719	719	0	0
3	C	616	616	616	0	0
3	D	580	580	580	0	0



● Molecule 1: LacZ1 Beta-galactosidase



4 Data and refinement statistics i

Property	Value	Source
Space group	P 1 21 1	Depositor
Cell constants a, b, c, α , β , γ	92.69Å 104.64Å 160.50Å 90.00° 91.29° 90.00°	Depositor
Resolution (Å)	24.85 – 1.65 24.85 – 1.65	Depositor EDS
% Data completeness (in resolution range)	91.2 (24.85-1.65) 91.1 (24.85-1.65)	Depositor EDS
R_{merge}	0.05	Depositor
R_{sym}	(Not available)	Depositor
$\langle I/\sigma(I) \rangle$ ¹	3.84 (at 1.65Å)	Xtrriage
Refinement program	PHENIX 1.10_2155	Depositor
R, R_{free}	0.156 , 0.183 0.156 , 0.184	Depositor DCC
R_{free} test set	1999 reflections (0.58%)	wwPDB-VP
Wilson B-factor (Å ²)	16.7	Xtrriage
Anisotropy	0.508	Xtrriage
Bulk solvent k_{sol} (e/Å ³), B_{sol} (Å ²)	0.36 , 40.3	EDS
L-test for twinning ²	$\langle L \rangle = 0.48$, $\langle L^2 \rangle = 0.30$	Xtrriage
Estimated twinning fraction	0.024 for h,-k,-l	Xtrriage
F_o, F_c correlation	0.97	EDS
Total number of atoms	22393	wwPDB-VP
Average B, all atoms (Å ²)	21.0	wwPDB-VP

Xtrriage's analysis on translational NCS is as follows: *The largest off-origin peak in the Patterson function is 2.79% of the height of the origin peak. No significant pseudotranslation is detected.*

¹Intensities estimated from amplitudes.

²Theoretical values of $\langle |L| \rangle$, $\langle L^2 \rangle$ for acentric reflections are 0.5, 0.333 respectively for untwinned datasets, and 0.375, 0.2 for perfectly twinned datasets.

5 Model quality [i](#)

5.1 Standard geometry [i](#)

Bond lengths and bond angles in the following residue types are not validated in this section: SJ5

The Z score for a bond length (or angle) is the number of standard deviations the observed value is removed from the expected value. A bond length (or angle) with $|Z| > 5$ is considered an outlier worth inspection. RMSZ is the root-mean-square of all Z scores of the bond lengths (or angles).

Mol	Chain	Bond lengths		Bond angles	
		RMSZ	# Z >5	RMSZ	# Z >5
1	A	0.71	3/5046 (0.1%)	0.80	2/6865 (0.0%)
1	B	0.64	2/5046 (0.0%)	0.79	3/6865 (0.0%)
1	C	0.59	0/5046	0.75	0/6865
1	D	0.59	0/5046	0.76	2/6865 (0.0%)
All	All	0.63	5/20184 (0.0%)	0.78	7/27460 (0.0%)

All (5) bond length outliers are listed below:

Mol	Chain	Res	Type	Atoms	Z	Observed(Å)	Ideal(Å)
1	A	313	ARG	NE-CZ	-14.06	1.17	1.33
1	A	313	ARG	CZ-NH1	-10.12	1.18	1.32
1	A	313	ARG	CZ-NH2	-7.00	1.24	1.33
1	B	383	TYR	C-N	-5.14	1.26	1.33
1	B	46	VAL	CA-CB	5.07	1.60	1.54

The worst 5 of 7 bond angle outliers are listed below:

Mol	Chain	Res	Type	Atoms	Z	Observed(°)	Ideal(°)
1	A	383	TYR	N-CA-C	7.50	123.67	111.37
1	B	383	TYR	CA-CB-CG	-6.44	102.31	113.90
1	D	108	PHE	O-C-N	-6.32	112.65	122.13
1	B	383	TYR	N-CA-C	6.13	121.42	111.37
1	D	383	TYR	N-CA-C	5.86	118.17	111.02

There are no chirality outliers.

There are no planarity outliers.

5.2 Too-close contacts [i](#)

In the following table, the Non-H and H(model) columns list the number of non-hydrogen atoms and hydrogen atoms in the chain respectively. The H(added) column lists the number of hydrogen atoms added and optimized by MolProbity. The Clashes column lists the number of clashes within the asymmetric unit, whereas Symm-Clashes lists symmetry-related clashes.

Mol	Chain	Non-H	H(model)	H(added)	Clashes	Symm-Clashes
1	A	4915	0	4663	24	0
1	B	4915	0	4663	20	0
1	C	4915	0	4663	33	0
1	D	4915	0	4663	35	0
2	A	11	0	0	0	0
2	B	11	0	0	0	0
2	C	11	0	0	0	0
2	D	11	0	0	1	0
3	A	774	0	0	8	1
3	B	719	0	0	7	1
3	C	616	0	0	6	0
3	D	580	0	0	8	0
All	All	22393	0	18652	105	2

The all-atom clashscore is defined as the number of clashes found per 1000 atoms (including hydrogen atoms). The all-atom clashscore for this structure is 3.

The worst 5 of 105 close contacts within the same asymmetric unit are listed below, sorted by their clash magnitude.

Atom-1	Atom-2	Interatomic distance (Å)	Clash overlap (Å)
1:D:173:GLN:NE2	3:D:801:HOH:O	1.86	1.06
1:A:172:ARG:NH2	3:A:801:HOH:O	2.00	0.93
1:D:219:CYS:SG	3:D:1309:HOH:O	2.28	0.90
1:B:597:ARG:NH2	3:B:801:HOH:O	2.07	0.88
1:D:342:SER:OG	1:D:343:ARG:NH1	2.07	0.87

All (2) symmetry-related close contacts are listed below. The label for Atom-2 includes the symmetry operator and encoded unit-cell translations to be applied.

Atom-1	Atom-2	Interatomic distance (Å)	Clash overlap (Å)
3:B:1371:HOH:O	3:B:1400:HOH:O[2_544]	2.13	0.07
3:A:875:HOH:O	3:A:1337:HOH:O[2_444]	2.19	0.01

5.3 Torsion angles [i](#)

5.3.1 Protein backbone [i](#)

In the following table, the Percentiles column shows the percent Ramachandran outliers of the chain as a percentile score with respect to all X-ray entries followed by that with respect to entries of similar resolution.

The Analysed column shows the number of residues for which the backbone conformation was analysed, and the total number of residues.

Mol	Chain	Analysed	Favoured	Allowed	Outliers	Percentiles	
1	A	613/670 (92%)	598 (98%)	15 (2%)	0	100	100
1	B	613/670 (92%)	595 (97%)	18 (3%)	0	100	100
1	C	613/670 (92%)	597 (97%)	15 (2%)	1 (0%)	43	27
1	D	613/670 (92%)	598 (98%)	15 (2%)	0	100	100
All	All	2452/2680 (92%)	2388 (97%)	63 (3%)	1 (0%)	100	100

All (1) Ramachandran outliers are listed below:

Mol	Chain	Res	Type
1	C	383	TYR

5.3.2 Protein sidechains [i](#)

In the following table, the Percentiles column shows the percent sidechain outliers of the chain as a percentile score with respect to all X-ray entries followed by that with respect to entries of similar resolution.

The Analysed column shows the number of residues for which the sidechain conformation was analysed, and the total number of residues.

Mol	Chain	Analysed	Rotameric	Outliers	Percentiles	
1	A	504/543 (93%)	501 (99%)	3 (1%)	78	68
1	B	504/543 (93%)	500 (99%)	4 (1%)	73	60
1	C	504/543 (93%)	502 (100%)	2 (0%)	84	77
1	D	504/543 (93%)	502 (100%)	2 (0%)	84	77
All	All	2016/2172 (93%)	2005 (100%)	11 (0%)	81	72

5 of 11 residues with a non-rotameric sidechain are listed below:

Mol	Chain	Res	Type
1	C	307	SER
1	C	511	ARG
1	D	575	TYR
1	D	376	PHE
1	B	376	PHE

Sometimes sidechains can be flipped to improve hydrogen bonding and reduce clashes. 5 of 8 such sidechains are listed below:

Mol	Chain	Res	Type
1	C	565	ASN
1	C	405	HIS
1	C	-1	ASN
1	B	350	GLN
1	C	350	GLN

5.3.3 RNA [i](#)

There are no RNA molecules in this entry.

5.4 Non-standard residues in protein, DNA, RNA chains [i](#)

There are no non-standard protein/DNA/RNA residues in this entry.

5.5 Carbohydrates [i](#)

There are no oligosaccharides in this entry.

5.6 Ligand geometry [i](#)

4 ligands are modelled in this entry.

In the following table, the Counts columns list the number of bonds (or angles) for which Mogul statistics could be retrieved, the number of bonds (or angles) that are observed in the model and the number of bonds (or angles) that are defined in the Chemical Component Dictionary. The Link column lists molecule types, if any, to which the group is linked. The Z score for a bond length (or angle) is the number of standard deviations the observed value is removed from the expected value. A bond length (or angle) with $|Z| > 2$ is considered an outlier worth inspection. RMSZ is the root-mean-square of all Z scores of the bond lengths (or angles).

Mol	Type	Chain	Res	Link	Bond lengths			Bond angles		
					Counts	RMSZ	# Z > 2	Counts	RMSZ	# Z > 2
2	SJ5	D	701	-	11,11,11	0.72	0	11,15,15	1.52	2 (18%)
2	SJ5	C	701	-	11,11,11	1.41	2 (18%)	11,15,15	1.64	3 (27%)
2	SJ5	A	701	-	11,11,11	1.11	2 (18%)	11,15,15	1.56	2 (18%)
2	SJ5	B	701	-	11,11,11	1.29	2 (18%)	11,15,15	1.39	4 (36%)

In the following table, the Chirals column lists the number of chiral outliers, the number of chiral centers analysed, the number of these observed in the model and the number defined in the Chemical Component Dictionary. Similar counts are reported in the Torsion and Rings columns. '-' means no outliers of that kind were identified.

Mol	Type	Chain	Res	Link	Chirals	Torsions	Rings
2	SJ5	D	701	-	-	2/4/18/18	0/1/1/1
2	SJ5	C	701	-	-	2/4/18/18	0/1/1/1
2	SJ5	A	701	-	-	2/4/18/18	0/1/1/1
2	SJ5	B	701	-	-	2/4/18/18	0/1/1/1

The worst 5 of 6 bond length outliers are listed below:

Mol	Chain	Res	Type	Atoms	Z	Observed(Å)	Ideal(Å)
2	C	701	SJ5	O61-C6	3.46	1.32	1.22
2	B	701	SJ5	O62-C6	-2.86	1.21	1.30
2	A	701	SJ5	O62-C6	-2.49	1.22	1.30
2	B	701	SJ5	O61-C6	2.34	1.29	1.22
2	C	701	SJ5	O62-C6	-2.27	1.23	1.30

The worst 5 of 11 bond angle outliers are listed below:

Mol	Chain	Res	Type	Atoms	Z	Observed(°)	Ideal(°)
2	A	701	SJ5	O61-C6-C5	-3.30	115.22	123.01
2	C	701	SJ5	O61-C6-C5	-3.17	115.52	123.01
2	D	701	SJ5	C7-N-C2	2.96	115.22	111.78
2	C	701	SJ5	O62-C6-C5	2.70	120.93	113.93
2	C	701	SJ5	C7-N-C2	2.54	114.72	111.78

There are no chirality outliers.

5 of 8 torsion outliers are listed below:

Mol	Chain	Res	Type	Atoms
2	A	701	SJ5	C4-C5-C6-O62
2	B	701	SJ5	C4-C5-C6-O62

Continued on next page...

Continued from previous page...

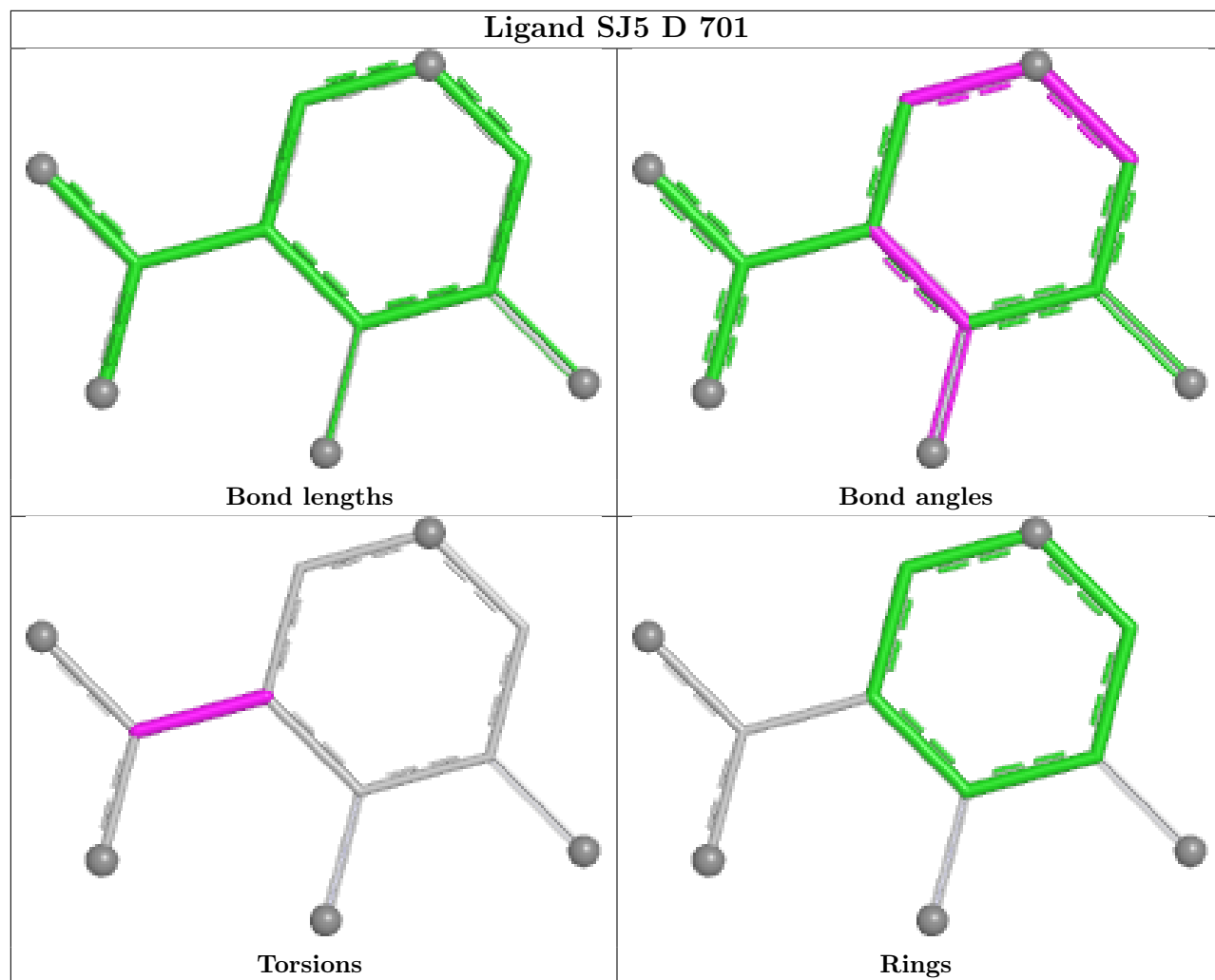
Mol	Chain	Res	Type	Atoms
2	D	701	SJ5	C4-C5-C6-O62
2	A	701	SJ5	C4-C5-C6-O61
2	B	701	SJ5	C4-C5-C6-O61

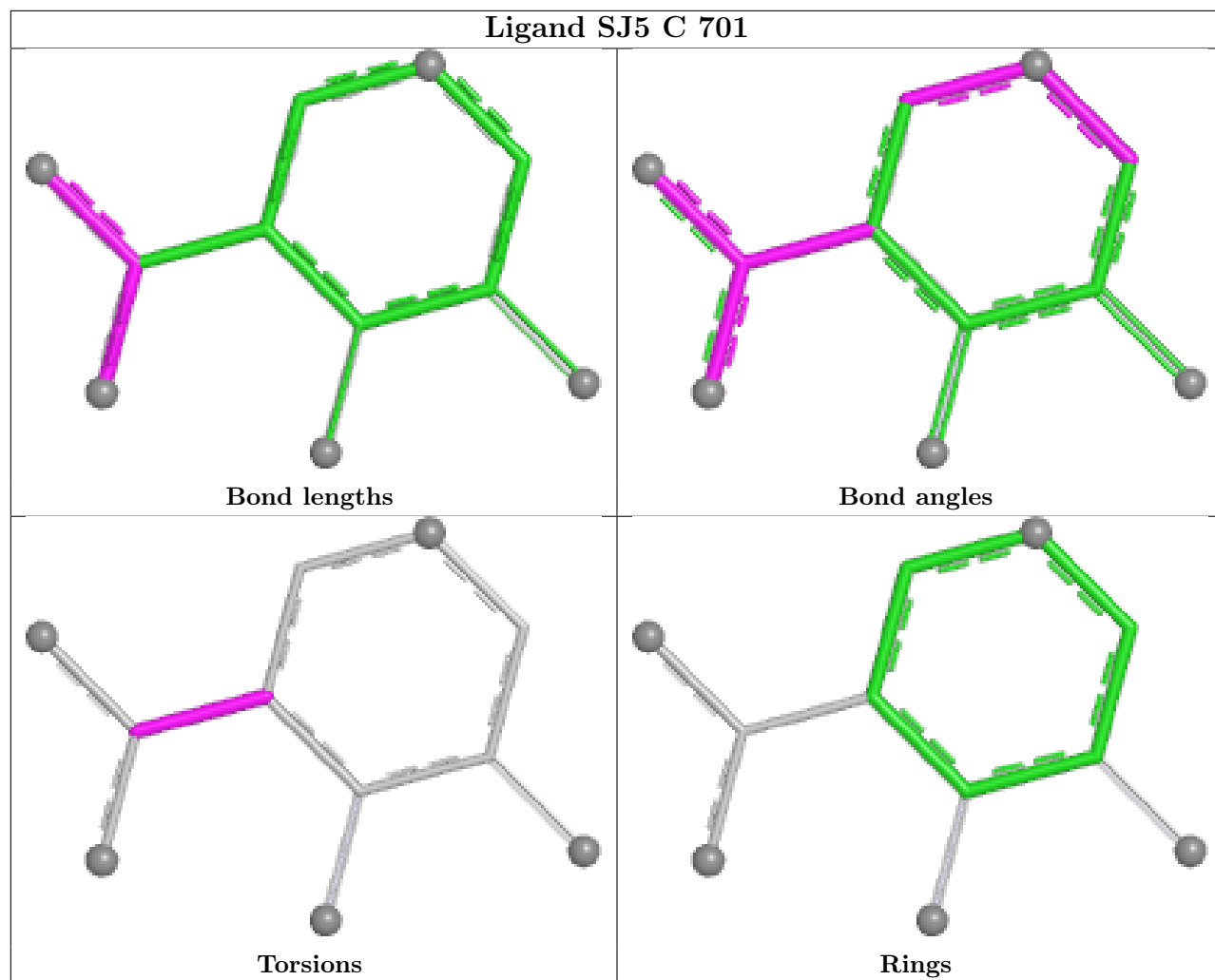
There are no ring outliers.

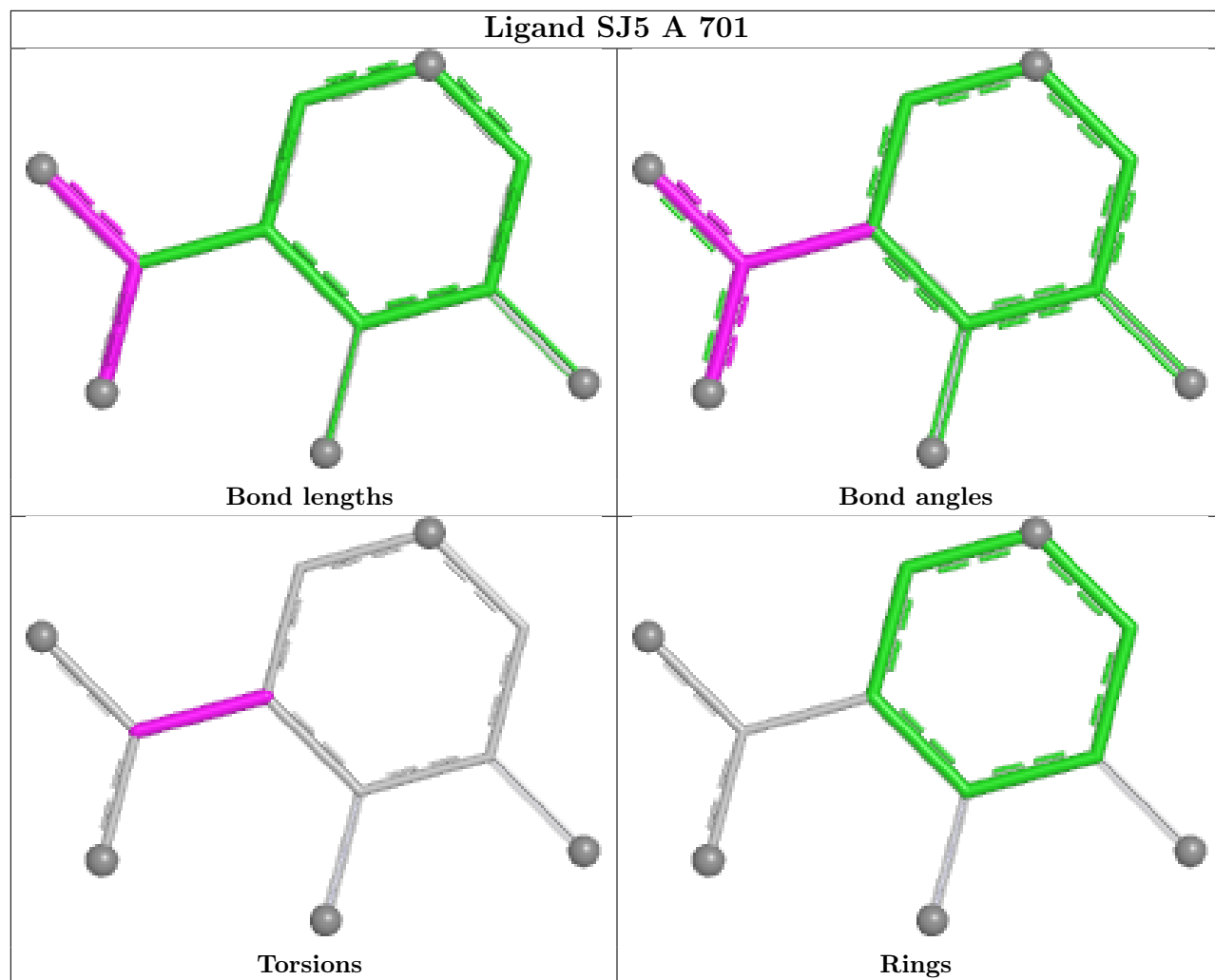
1 monomer is involved in 1 short contact:

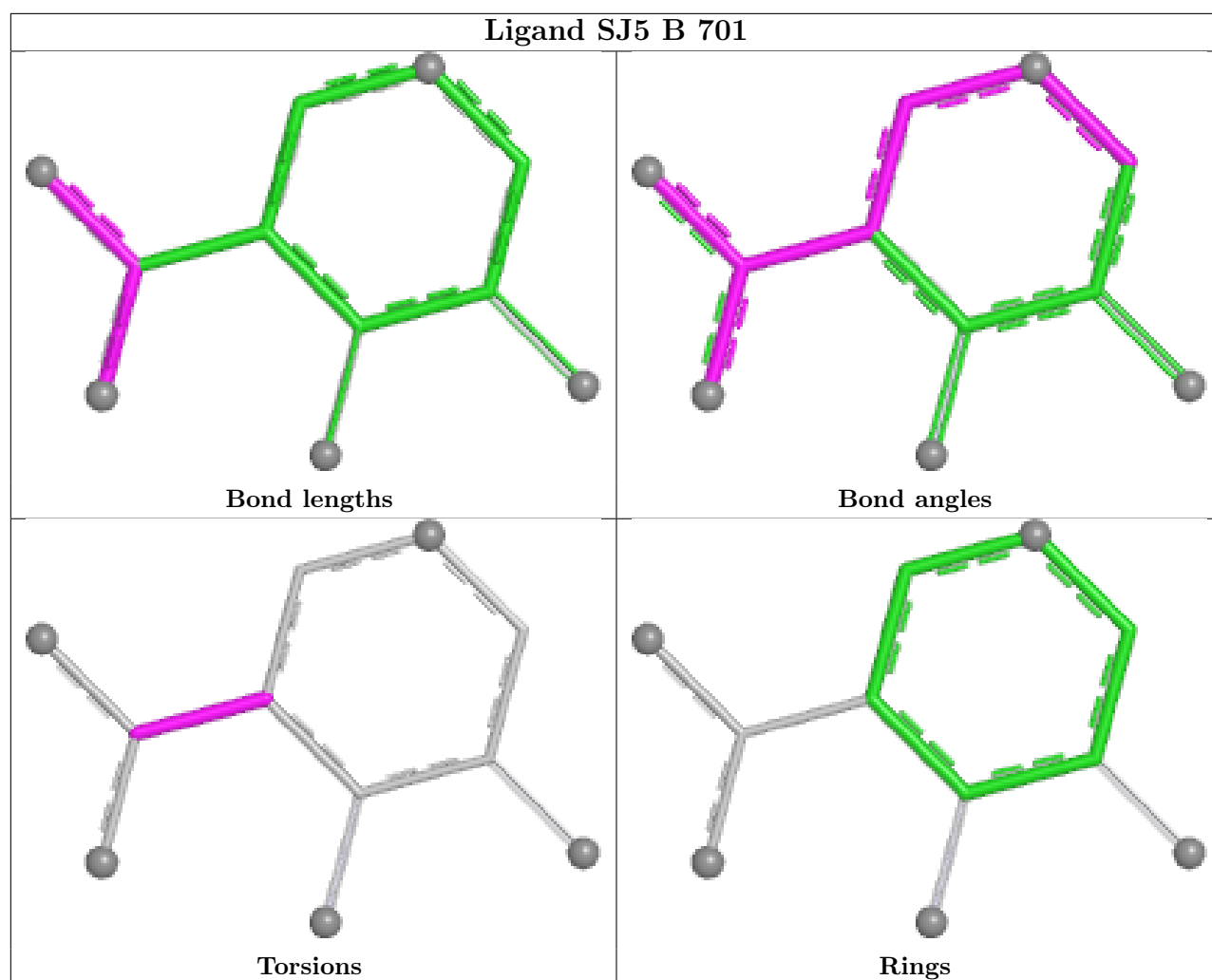
Mol	Chain	Res	Type	Clashes	Symm-Clashes
2	D	701	SJ5	1	0

The following is a two-dimensional graphical depiction of Mogul quality analysis of bond lengths, bond angles, torsion angles, and ring geometry for all instances of the Ligand of Interest. In addition, ligands with molecular weight > 250 and outliers as shown on the validation Tables will also be included. For torsion angles, if less than 5% of the Mogul distribution of torsion angles is within 10 degrees of the torsion angle in question, then that torsion angle is considered an outlier. Any bond that is central to one or more torsion angles identified as an outlier by Mogul will be highlighted in the graph. For rings, the root-mean-square deviation (RMSD) between the ring in question and similar rings identified by Mogul is calculated over all ring torsion angles. If the average RMSD is greater than 60 degrees and the minimal RMSD between the ring in question and any Mogul-identified rings is also greater than 60 degrees, then that ring is considered an outlier. The outliers are highlighted in purple. The color gray indicates Mogul did not find sufficient equivalents in the CSD to analyse the geometry.









5.7 Other polymers [\(i\)](#)

There are no such residues in this entry.

5.8 Polymer linkage issues [\(i\)](#)

There are no chain breaks in this entry.

6 Fit of model and data [i](#)

6.1 Protein, DNA and RNA chains [i](#)

In the following table, the column labelled ‘#RSRZ > 2’ contains the number (and percentage) of RSRZ outliers, followed by percent RSRZ outliers for the chain as percentile scores relative to all X-ray entries and entries of similar resolution. The OWAB column contains the minimum, median, 95th percentile and maximum values of the occupancy-weighted average B-factor per residue. The column labelled ‘Q < 0.9’ lists the number of (and percentage) of residues with an average occupancy less than 0.9.

Mol	Chain	Analysed	<RSRZ>	#RSRZ>2	OWAB(Å ²)	Q<0.9
1	A	620/670 (92%)	-0.51	9 (1%) 72 77	9, 15, 30, 59	1 (0%)
1	B	620/670 (92%)	-0.48	9 (1%) 72 77	7, 15, 31, 62	1 (0%)
1	C	620/670 (92%)	-0.15	9 (1%) 72 77	10, 20, 37, 63	1 (0%)
1	D	620/670 (92%)	-0.10	10 (1%) 70 75	10, 21, 38, 70	1 (0%)
All	All	2480/2680 (92%)	-0.31	37 (1%) 72 77	7, 18, 36, 70	4 (0%)

The worst 5 of 37 RSRZ outliers are listed below:

Mol	Chain	Res	Type	RSRZ
1	A	303	THR	4.2
1	C	78	LEU	4.2
1	D	383	TYR	4.1
1	A	78	LEU	3.7
1	D	303	THR	3.7

6.2 Non-standard residues in protein, DNA, RNA chains [i](#)

There are no non-standard protein/DNA/RNA residues in this entry.

6.3 Carbohydrates [i](#)

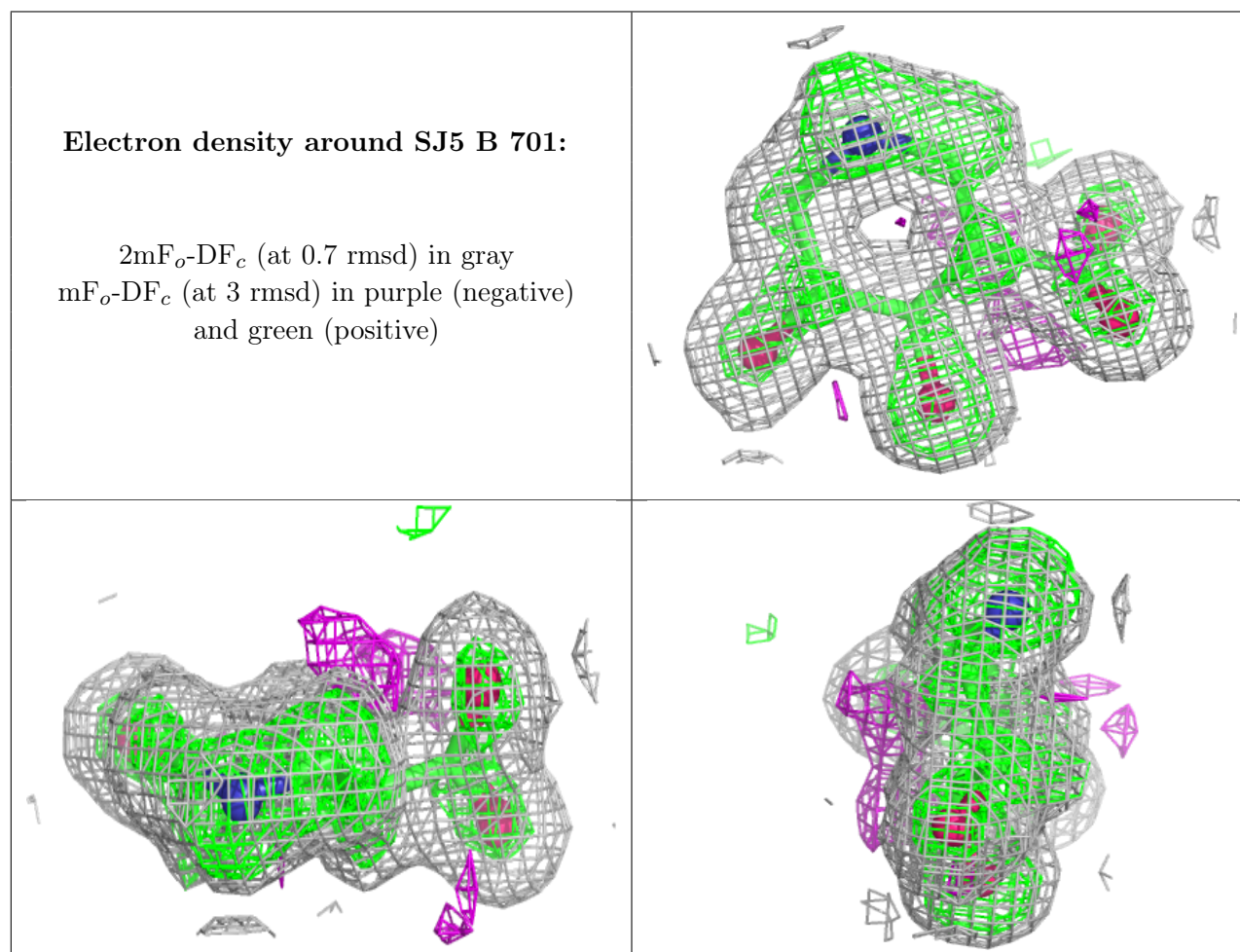
There are no oligosaccharides in this entry.

6.4 Ligands [i](#)

In the following table, the Atoms column lists the number of modelled atoms in the group and the number defined in the chemical component dictionary. The B-factors column lists the minimum, median, 95th percentile and maximum values of B factors of atoms in the group. The column labelled ‘Q < 0.9’ lists the number of atoms with occupancy less than 0.9.

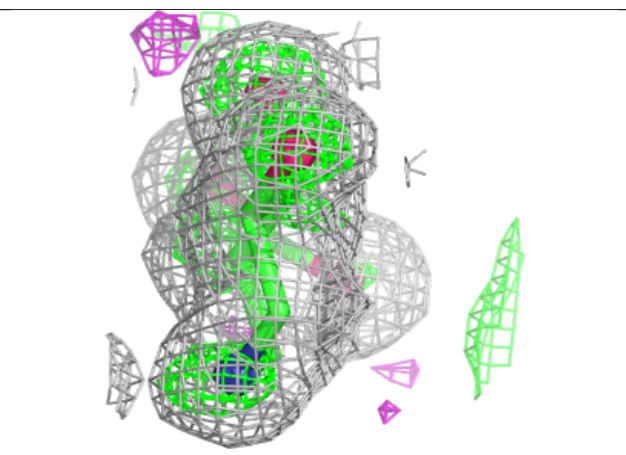
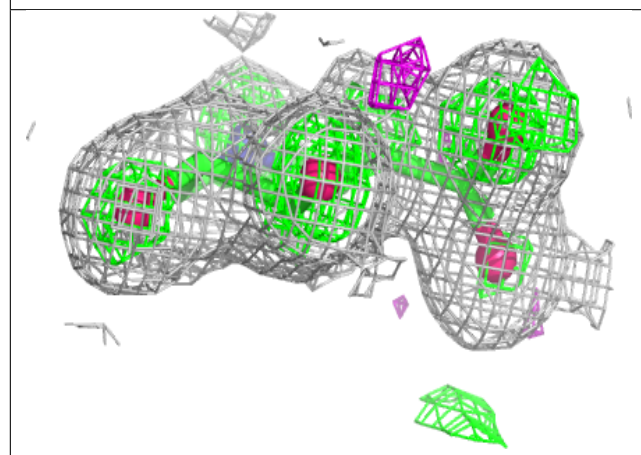
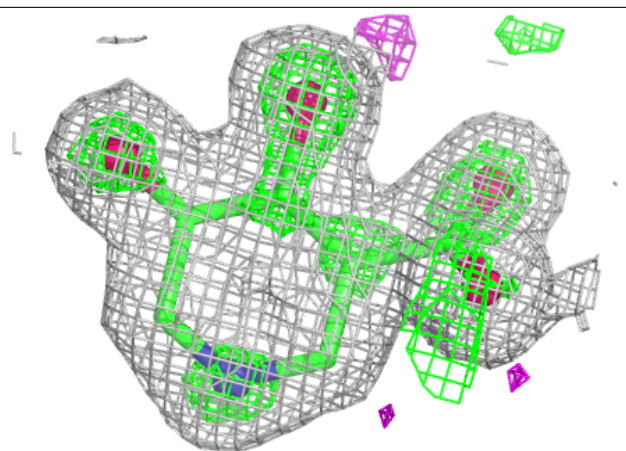
Mol	Type	Chain	Res	Atoms	RSCC	RSR	B-factors(\AA^2)	Q<0.9
2	SJ5	B	701	11/11	0.94	0.11	20,20,20,20	0
2	SJ5	A	701	11/11	0.96	0.09	20,20,20,20	0
2	SJ5	C	701	11/11	0.96	0.09	20,20,20,20	0
2	SJ5	D	701	11/11	0.97	0.07	20,20,20,20	0

The following is a graphical depiction of the model fit to experimental electron density of all instances of the Ligand of Interest. In addition, ligands with molecular weight > 250 and outliers as shown on the geometry validation Tables will also be included. Each fit is shown from different orientation to approximate a three-dimensional view.



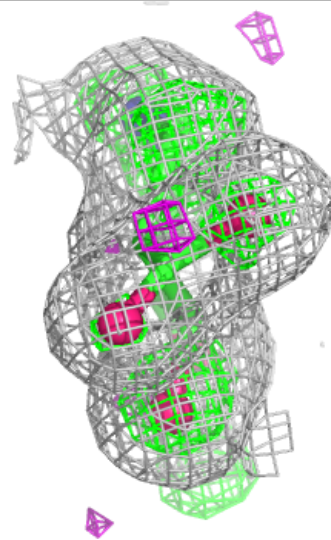
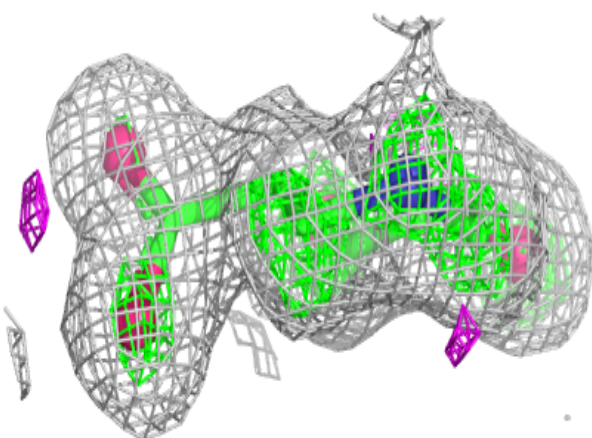
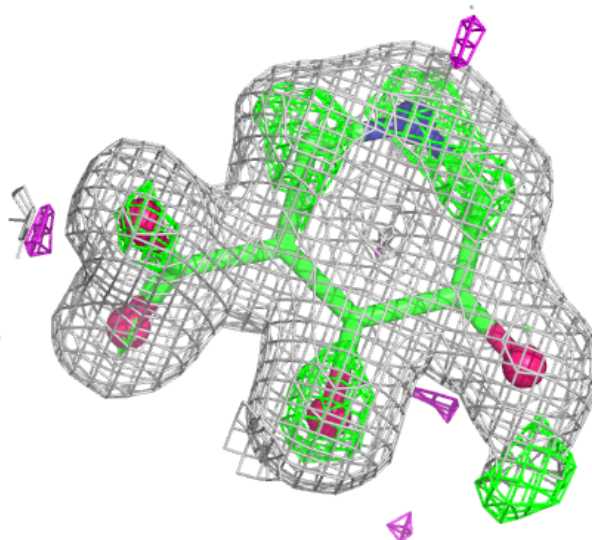
Electron density around SJ5 A 701:

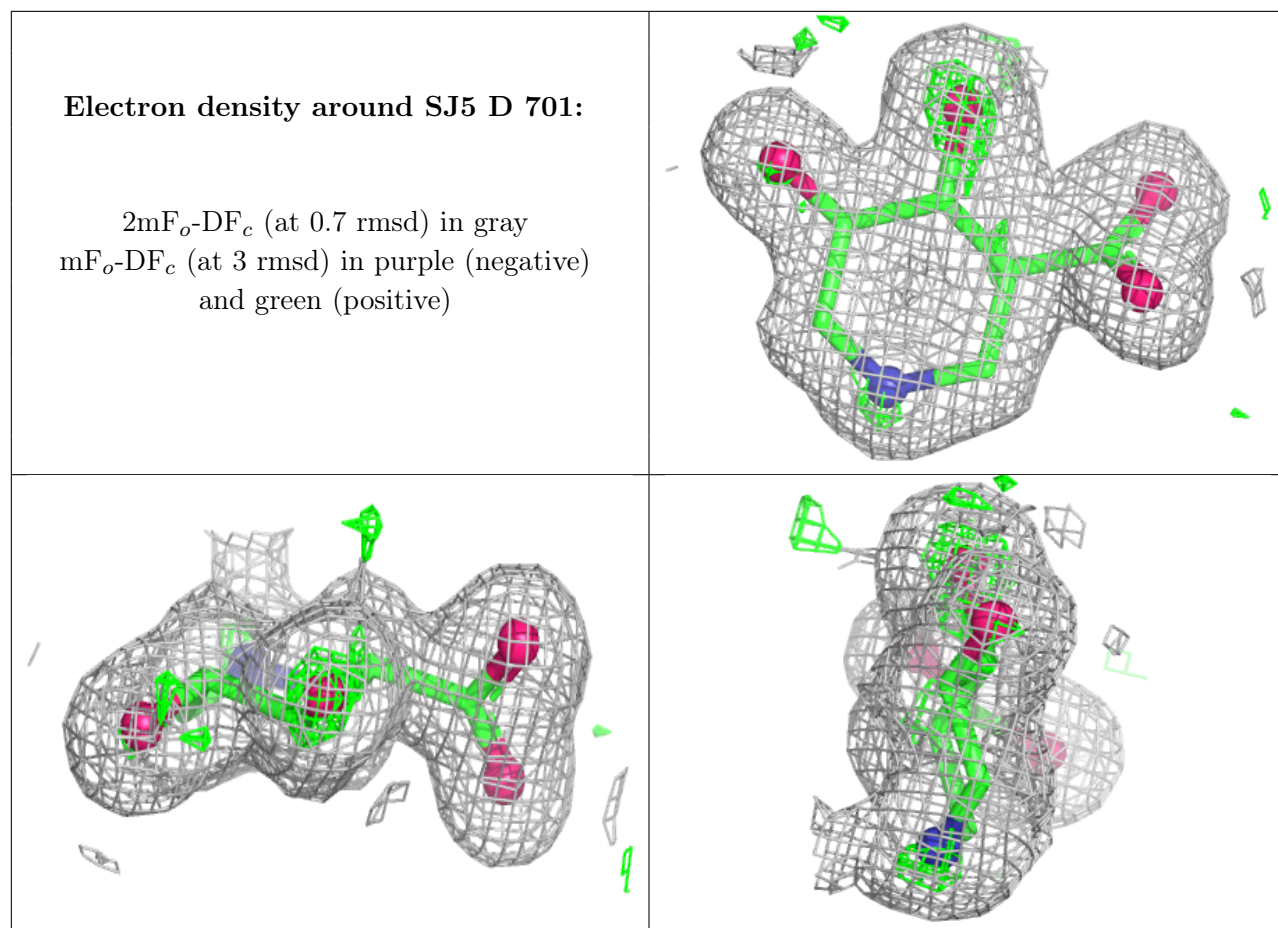
$2mF_o-DF_c$ (at 0.7 rmsd) in gray
 mF_o-DF_c (at 3 rmsd) in purple (negative)
and green (positive)



Electron density around SJ5 C 701:

$2mF_o-DF_c$ (at 0.7 rmsd) in gray
 mF_o-DF_c (at 3 rmsd) in purple (negative)
and green (positive)





6.5 Other polymers [i](#)

There are no such residues in this entry.