



wwPDB X-ray Structure Validation Summary Report

Mar 8, 2026 – 07:01 AM UTC

PDB ID : 4LEZ / pdb_00004lez
Title : Structure of mouse cGAS bound to an 18bp DNA and cGAS product
Authors : Li, P.
Deposited on : 2013-06-26
Resolution : 2.36 Å(reported)

This is a wwPDB X-ray Structure Validation Summary Report for a publicly released PDB entry.

We welcome your comments at validation@mail.wwpdb.org

A user guide is available at

<https://www.wwpdb.org/validation/2017/XrayValidationReportHelp>

with specific help available everywhere you see the  symbol.

The types of validation reports are described at

<http://www.wwpdb.org/validation/2017/FAQs#types>.

The following versions of software and data (see [references](#) ) were used in the production of this report:

MolProbity : 4-5-2 with Phenix2.0
Mogul : 2022.3.0, CSD as543be (2022)
Xtrriage (Phenix) : 2.0
EDS : 3.0
Buster-report : wwPDB partial adaption of 1.1.7 (2018)
Percentile statistics : 20250101.v01 (using entries in the PDB archive January 1st 2025)
CCP4 : 9.0.010 (Gargrove)
Density-Fitness : 1.0.12
Ideal geometry (proteins) : Engh & Huber (2001)
Ideal geometry (DNA, RNA) : Parkinson et al. (1996)
Validation Pipeline (wwPDB-VP) : 2.49

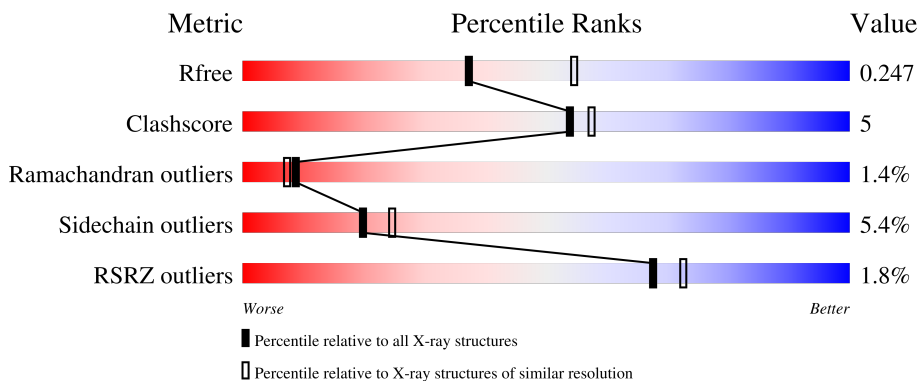
1 Overall quality at a glance

The following experimental techniques were used to determine the structure:

X-RAY DIFFRACTION

The reported resolution of this entry is 2.36 Å.

Percentile scores (ranging between 0-100) for global validation metrics of the entry are shown in the following graphic. The table shows the number of entries on which the scores are based.



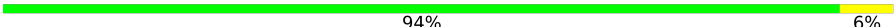
Metric	Whole archive (#Entries)	Similar resolution (#Entries, resolution range(Å))
R_{free}	180053	1596 (2.36-2.36)
Clashscore	190562	1663 (2.36-2.36)
Ramachandran outliers	187476	1646 (2.36-2.36)
Sidechain outliers	187428	1646 (2.36-2.36)
RSRZ outliers	180081	1598 (2.36-2.36)

The table below summarises the geometric issues observed across the polymeric chains and their fit to the electron density. The red, orange, yellow and green segments of the lower bar indicate the fraction of residues that contain outliers for ≥ 3 , 2, 1 and 0 types of geometric quality criteria respectively. A grey segment represents the fraction of residues that are not modelled. The numeric value for each fraction is indicated below the corresponding segment, with a dot representing fractions $\leq 5\%$. The upper red bar (where present) indicates the fraction of residues that have poor fit to the electron density. The numeric value is given above the bar.

Mol	Chain	Length	Quality of chain
1	A	366	81% 16% ..
1	C	366	79% 17% ..
2	E	18	94% 6%
2	F	18	94% 6%
2	I	18	78% 22%

Continued on next page...

Continued from previous page...

Mol	Chain	Length	Quality of chain
2	J	18	 94% 6%

2 Entry composition

There are 5 unique types of molecules in this entry. The entry contains 7645 atoms, of which 0 are hydrogens and 0 are deuteriums.

In the tables below, the ZeroOcc column contains the number of atoms modelled with zero occupancy, the AltConf column contains the number of residues with at least one atom in alternate conformation and the Trace column contains the number of residues modelled with at most 2 atoms.

- Molecule 1 is a protein called Cyclic GMP-AMP synthase.

Mol	Chain	Residues	Atoms					ZeroOcc	AltConf	Trace
			Total	C	N	O	S			
1	A	359	2969	1910	506	540	13	0	0	0
1	C	359	2969	1910	506	540	13	0	0	0

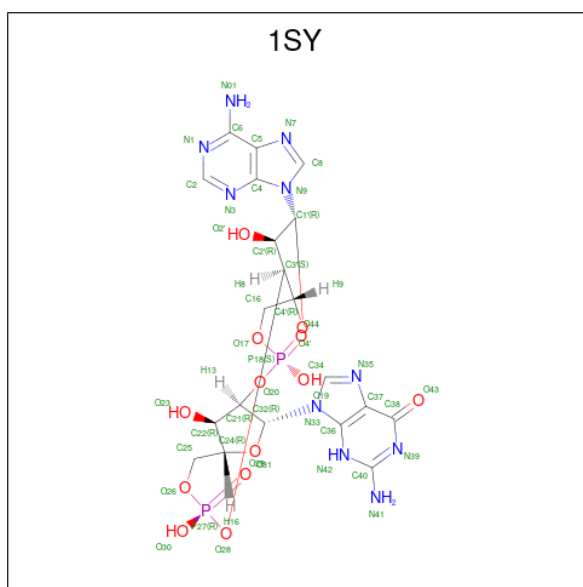
- Molecule 2 is a DNA chain called 18bp dsDNA.

Mol	Chain	Residues	Atoms					ZeroOcc	AltConf	Trace
			Total	C	N	O	P			
2	E	18	366	177	66	106	17	0	0	0
2	F	18	366	177	66	106	17	0	0	0
2	I	18	366	177	66	106	17	0	0	0
2	J	18	366	177	66	106	17	0	0	0

- Molecule 3 is ZINC ION (CCD ID: ZN) (formula: Zn).

Mol	Chain	Residues	Atoms		ZeroOcc	AltConf
3	A	1	Total	Zn	0	0
			1	1		
3	C	1	Total	Zn	0	0
			1	1		

- Molecule 4 is cGAMP (CCD ID: 1SY) (formula: C₂₀H₂₄N₁₀O₁₃P₂).



Mol	Chain	Residues	Atoms				ZeroOcc	AltConf	
			Total	C	N	O			P
4	A	1	Total	C	N	O	P	0	0
			45	20	10	13	2		
4	C	1	Total	C	N	O	P	0	0
			45	20	10	13	2		

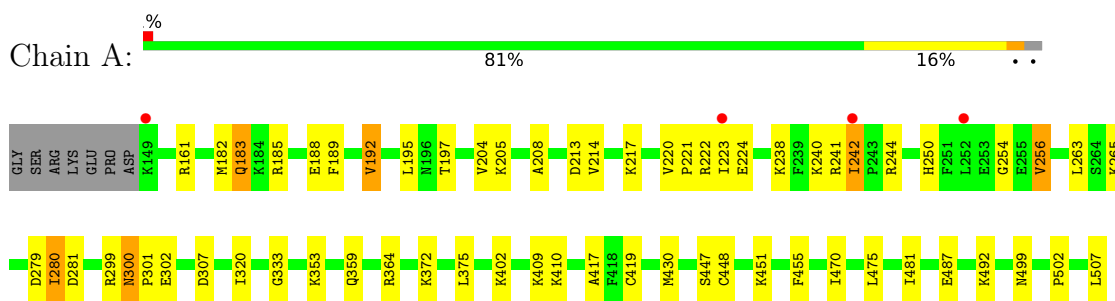
- Molecule 5 is water.

Mol	Chain	Residues	Atoms		ZeroOcc	AltConf
5	A	66	Total	O	0	0
			66	66		
5	C	51	Total	O	0	0
			51	51		
5	E	16	Total	O	0	0
			16	16		
5	F	7	Total	O	0	0
			7	7		
5	I	7	Total	O	0	0
			7	7		
5	J	4	Total	O	0	0
			4	4		

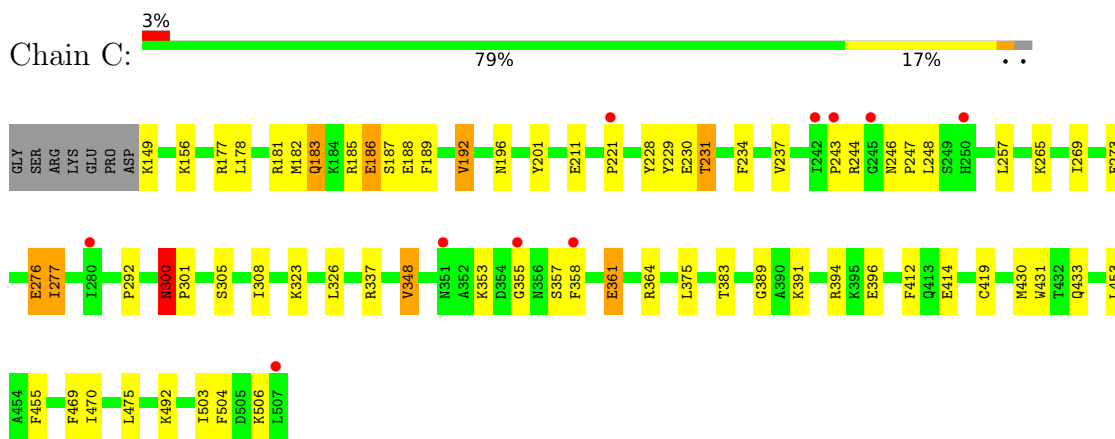
3 Residue-property plots [i](#)

These plots are drawn for all protein, RNA, DNA and oligosaccharide chains in the entry. The first graphic for a chain summarises the proportions of the various outlier classes displayed in the second graphic. The second graphic shows the sequence view annotated by issues in geometry and electron density. Residues are color-coded according to the number of geometric quality criteria for which they contain at least one outlier: green = 0, yellow = 1, orange = 2 and red = 3 or more. A red dot above a residue indicates a poor fit to the electron density ($RSRZ > 2$). Stretches of 2 or more consecutive residues without any outlier are shown as a green connector. Residues present in the sample, but not in the model, are shown in grey.

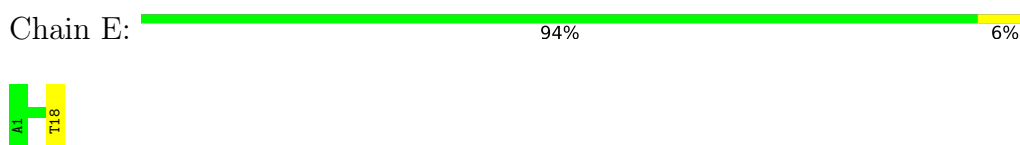
- Molecule 1: Cyclic GMP-AMP synthase



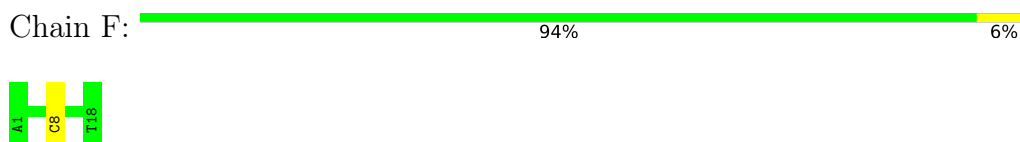
- Molecule 1: Cyclic GMP-AMP synthase




- Molecule 2: 18bp dsDNA



- Molecule 2: 18bp dsDNA



- Molecule 2: 18bp dsDNA

Chain I:  78% 22%



- Molecule 2: 18bp dsDNA

Chain J:  94% 6%



4 Data and refinement statistics

Property	Value	Source
Space group	P 21 21 21	Depositor
Cell constants a, b, c, α , β , γ	79.21Å 99.03Å 142.63Å 90.00° 90.00° 90.00°	Depositor
Resolution (Å)	33.55 – 2.36 33.55 – 2.36	Depositor EDS
% Data completeness (in resolution range)	96.6 (33.55-2.36) 88.0 (33.55-2.36)	Depositor EDS
R_{merge}	0.07	Depositor
R_{sym}	0.07	Depositor
$\langle I/\sigma(I) \rangle$ ¹	1.58 (at 2.36Å)	Xtrriage
Refinement program	PHENIX (phenix.refine: 1.8.2_1309)	Depositor
R, R_{free}	0.192 , 0.247 0.194 , 0.247	Depositor DCC
R_{free} test set	2000 reflections (4.39%)	wwPDB-VP
Wilson B-factor (Å ²)	50.1	Xtrriage
Anisotropy	0.105	Xtrriage
Bulk solvent k_{sol} (e/Å ³), B_{sol} (Å ²)	0.27 , 36.9	EDS
L-test for twinning ²	$\langle L \rangle = 0.49$, $\langle L^2 \rangle = 0.32$	Xtrriage
Estimated twinning fraction	No twinning to report.	Xtrriage
F_o, F_c correlation	0.96	EDS
Total number of atoms	7645	wwPDB-VP
Average B, all atoms (Å ²)	71.0	wwPDB-VP

Xtrriage's analysis on translational NCS is as follows: *The analyses of the Patterson function reveals a significant off-origin peak that is 37.03 % of the origin peak, indicating pseudo-translational symmetry. The chance of finding a peak of this or larger height randomly in a structure without pseudo-translational symmetry is equal to 4.5663e-04. The detected translational NCS is most likely also responsible for the elevated intensity ratio.*

¹Intensities estimated from amplitudes.

²Theoretical values of $\langle |L| \rangle$, $\langle L^2 \rangle$ for acentric reflections are 0.5, 0.333 respectively for untwinned datasets, and 0.375, 0.2 for perfectly twinned datasets.

5 Model quality [i](#)

5.1 Standard geometry [i](#)

Bond lengths and bond angles in the following residue types are not validated in this section: 1SY, ZN

The Z score for a bond length (or angle) is the number of standard deviations the observed value is removed from the expected value. A bond length (or angle) with $|Z| > 5$ is considered an outlier worth inspection. RMSZ is the root-mean-square of all Z scores of the bond lengths (or angles).

Mol	Chain	Bond lengths		Bond angles	
		RMSZ	# Z >5	RMSZ	# Z >5
1	A	0.51	0/3033	0.86	6/4071 (0.1%)
1	C	0.48	0/3033	0.91	6/4071 (0.1%)
2	E	0.29	0/410	0.86	0/631
2	F	0.29	0/410	0.91	0/631
2	I	0.26	0/410	0.84	0/631
2	J	0.28	0/410	0.85	0/631
All	All	0.46	0/7706	0.88	12/10666 (0.1%)

Chiral center outliers are detected by calculating the chiral volume of a chiral center and verifying if the center is modelled as a planar moiety or with the opposite hand. A planarity outlier is detected by checking planarity of atoms in a peptide group, atoms in a mainchain group or atoms of a sidechain that are expected to be planar.

Mol	Chain	#Chirality outliers	#Planarity outliers
1	A	0	1
1	C	0	1
All	All	0	2

There are no bond length outliers.

The worst 5 of 12 bond angle outliers are listed below:

Mol	Chain	Res	Type	Atoms	Z	Observed(°)	Ideal(°)
1	C	300	ASN	CA-C-N	-13.69	102.73	119.84
1	C	300	ASN	C-N-CA	-13.69	102.73	119.84
1	A	220	VAL	CA-C-N	6.62	128.11	119.84
1	A	220	VAL	C-N-CA	6.62	128.11	119.84
1	C	230	GLU	N-CA-C	6.01	119.93	112.47

There are no chirality outliers.

All (2) planarity outliers are listed below:

Mol	Chain	Res	Type	Group
1	A	300	ASN	Peptide
1	C	300	ASN	Peptide

5.2 Too-close contacts [i](#)

In the following table, the Non-H and H(model) columns list the number of non-hydrogen atoms and hydrogen atoms in the chain respectively. The H(added) column lists the number of hydrogen atoms added and optimized by MolProbity. The Clashes column lists the number of clashes within the asymmetric unit, whereas Symm-Clashes lists symmetry-related clashes.

Mol	Chain	Non-H	H(model)	H(added)	Clashes	Symm-Clashes
1	A	2969	0	3022	26	0
1	C	2969	0	3022	36	0
2	E	366	0	206	1	0
2	F	366	0	206	1	0
2	I	366	0	206	3	0
2	J	366	0	206	2	0
3	A	1	0	0	0	0
3	C	1	0	0	0	0
4	A	45	0	22	5	0
4	C	45	0	22	5	0
5	A	66	0	0	1	0
5	C	51	0	0	5	0
5	E	16	0	0	1	0
5	F	7	0	0	0	0
5	I	7	0	0	1	0
5	J	4	0	0	0	0
All	All	7645	0	6912	70	0

The all-atom clashscore is defined as the number of clashes found per 1000 atoms (including hydrogen atoms). The all-atom clashscore for this structure is 5.

The worst 5 of 70 close contacts within the same asymmetric unit are listed below, sorted by their clash magnitude.

Atom-1	Atom-2	Interatomic distance (Å)	Clash overlap (Å)
1:C:364:ARG:HH21	4:C:602:1SY:H3	1.28	0.82
2:E:18:DT:OP2	5:E:110:HOH:O	2.00	0.80
2:I:11:DG:N7	5:I:104:HOH:O	2.16	0.79
4:A:602:1SY:O19	5:A:760:HOH:O	2.02	0.78
1:C:188:GLU:O	5:C:733:HOH:O	2.05	0.72

There are no symmetry-related clashes.

5.3 Torsion angles [i](#)

5.3.1 Protein backbone [i](#)

In the following table, the Percentiles column shows the percent Ramachandran outliers of the chain as a percentile score with respect to all X-ray entries followed by that with respect to entries of similar resolution.

The Analysed column shows the number of residues for which the backbone conformation was analysed, and the total number of residues.

Mol	Chain	Analysed	Favoured	Allowed	Outliers	Percentiles	
1	A	357/366 (98%)	341 (96%)	12 (3%)	4 (1%)	11	11
1	C	357/366 (98%)	333 (93%)	18 (5%)	6 (2%)	7	6
All	All	714/732 (98%)	674 (94%)	30 (4%)	10 (1%)	9	7

5 of 10 Ramachandran outliers are listed below:

Mol	Chain	Res	Type
1	A	221	PRO
1	A	301	PRO
1	C	186	GLU
1	C	300	ASN
1	C	229	TYR

5.3.2 Protein sidechains [i](#)

In the following table, the Percentiles column shows the percent sidechain outliers of the chain as a percentile score with respect to all X-ray entries followed by that with respect to entries of similar resolution.

The Analysed column shows the number of residues for which the sidechain conformation was analysed, and the total number of residues.

Mol	Chain	Analysed	Rotameric	Outliers	Percentiles	
1	A	332/338 (98%)	315 (95%)	17 (5%)	21	26
1	C	332/338 (98%)	313 (94%)	19 (6%)	18	23
All	All	664/676 (98%)	628 (95%)	36 (5%)	20	24

5 of 36 residues with a non-rotameric sidechain are listed below:

Mol	Chain	Res	Type
1	C	348	VAL
1	C	475	LEU
1	C	361	GLU
1	C	396	GLU
1	A	375	LEU

Sometimes sidechains can be flipped to improve hydrogen bonding and reduce clashes. 5 of 6 such sidechains are listed below:

Mol	Chain	Res	Type
1	A	433	GLN
1	C	246	ASN
1	C	499	ASN
1	A	376	ASN
1	A	359	GLN

5.3.3 RNA [i](#)

There are no RNA molecules in this entry.

5.4 Non-standard residues in protein, DNA, RNA chains [i](#)

There are no non-standard protein/DNA/RNA residues in this entry.

5.5 Carbohydrates [i](#)

There are no oligosaccharides in this entry.

5.6 Ligand geometry [i](#)

Of 4 ligands modelled in this entry, 2 are monoatomic - leaving 2 for Mogul analysis.

In the following table, the Counts columns list the number of bonds (or angles) for which Mogul statistics could be retrieved, the number of bonds (or angles) that are observed in the model and the number of bonds (or angles) that are defined in the Chemical Component Dictionary. The Link column lists molecule types, if any, to which the group is linked. The Z score for a bond length (or angle) is the number of standard deviations the observed value is removed from the expected value. A bond length (or angle) with $|Z| > 2$ is considered an outlier worth inspection. RMSZ is the root-mean-square of all Z scores of the bond lengths (or angles).

Mol	Type	Chain	Res	Link	Bond lengths			Bond angles		
					Counts	RMSZ	# Z > 2	Counts	RMSZ	# Z > 2
4	1SY	A	602	-	51,51,51	1.93	9 (17%)	70,80,80	1.77	18 (25%)
4	1SY	C	602	-	51,51,51	1.95	10 (19%)	70,80,80	1.81	17 (24%)

In the following table, the Chirals column lists the number of chiral outliers, the number of chiral centers analysed, the number of these observed in the model and the number defined in the Chemical Component Dictionary. Similar counts are reported in the Torsion and Rings columns. '-' means no outliers of that kind were identified.

Mol	Type	Chain	Res	Link	Chirals	Torsions	Rings
4	1SY	A	602	-	-	7/30/62/62	0/6/7/7
4	1SY	C	602	-	-	8/30/62/62	0/6/7/7

The worst 5 of 19 bond length outliers are listed below:

Mol	Chain	Res	Type	Atoms	Z	Observed(Å)	Ideal(Å)
4	A	602	1SY	O43-C38	9.20	1.40	1.23
4	C	602	1SY	O43-C38	8.78	1.39	1.23
4	A	602	1SY	C6-N01	4.54	1.45	1.34
4	C	602	1SY	C6-N01	4.51	1.45	1.34
4	C	602	1SY	C22-C21	-3.39	1.45	1.53

The worst 5 of 35 bond angle outliers are listed below:

Mol	Chain	Res	Type	Atoms	Z	Observed(°)	Ideal(°)
4	C	602	1SY	C5-C4-N3	-5.33	119.38	126.72
4	A	602	1SY	N3-C2-N1	-5.03	120.96	128.58
4	A	602	1SY	C5-C4-N3	-4.92	119.94	126.72
4	C	602	1SY	N3-C2-N1	-4.72	121.43	128.58
4	C	602	1SY	N3-C4-N9	4.22	134.35	127.17

There are no chirality outliers.

5 of 15 torsion outliers are listed below:

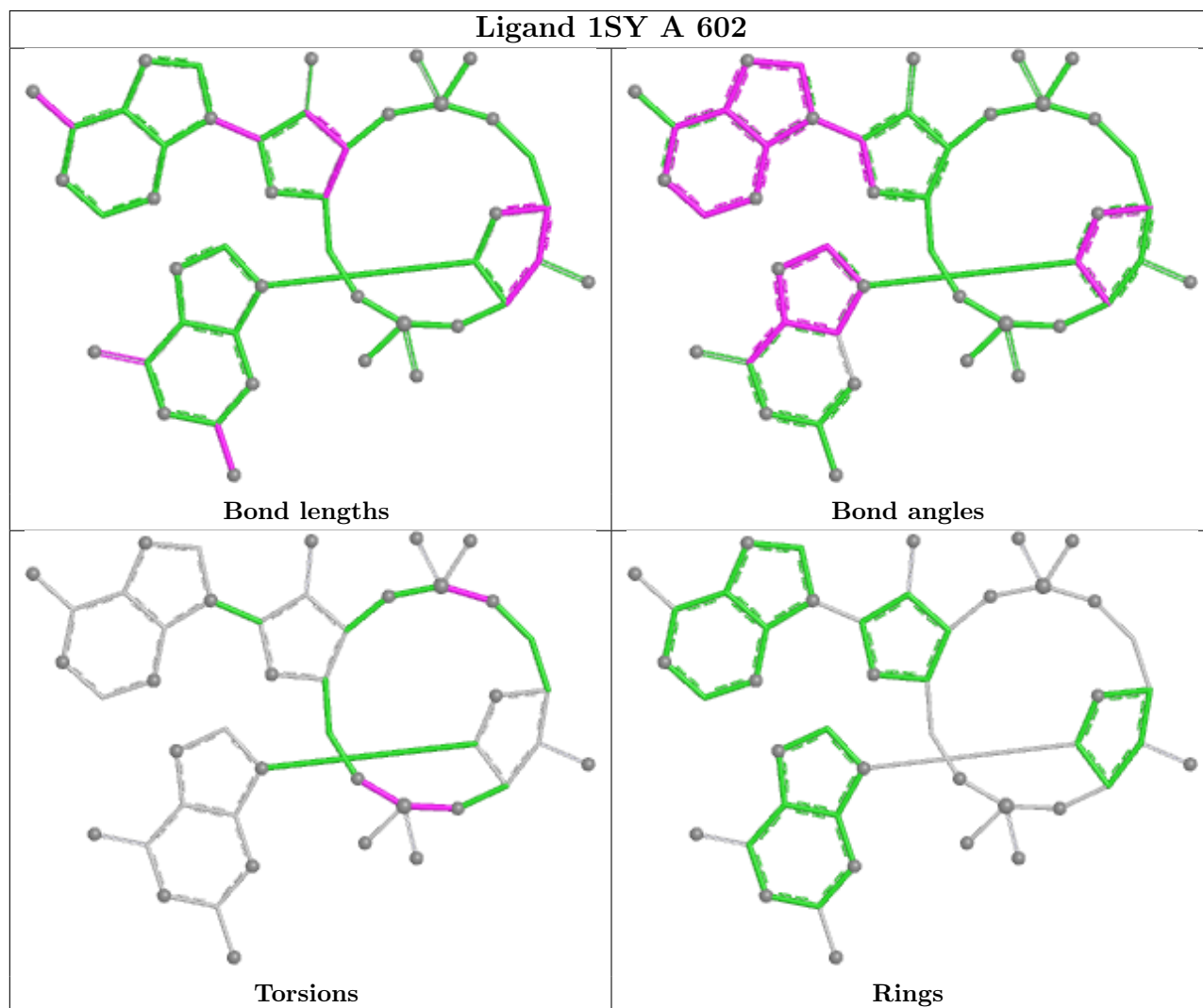
Mol	Chain	Res	Type	Atoms
4	A	602	1SY	C16-O17-P18-O20
4	A	602	1SY	C21-O20-P18-O17
4	C	602	1SY	C21-O20-P18-O17
4	C	602	1SY	C25-O26-P27-O28
4	C	602	1SY	C25-O26-P27-O29

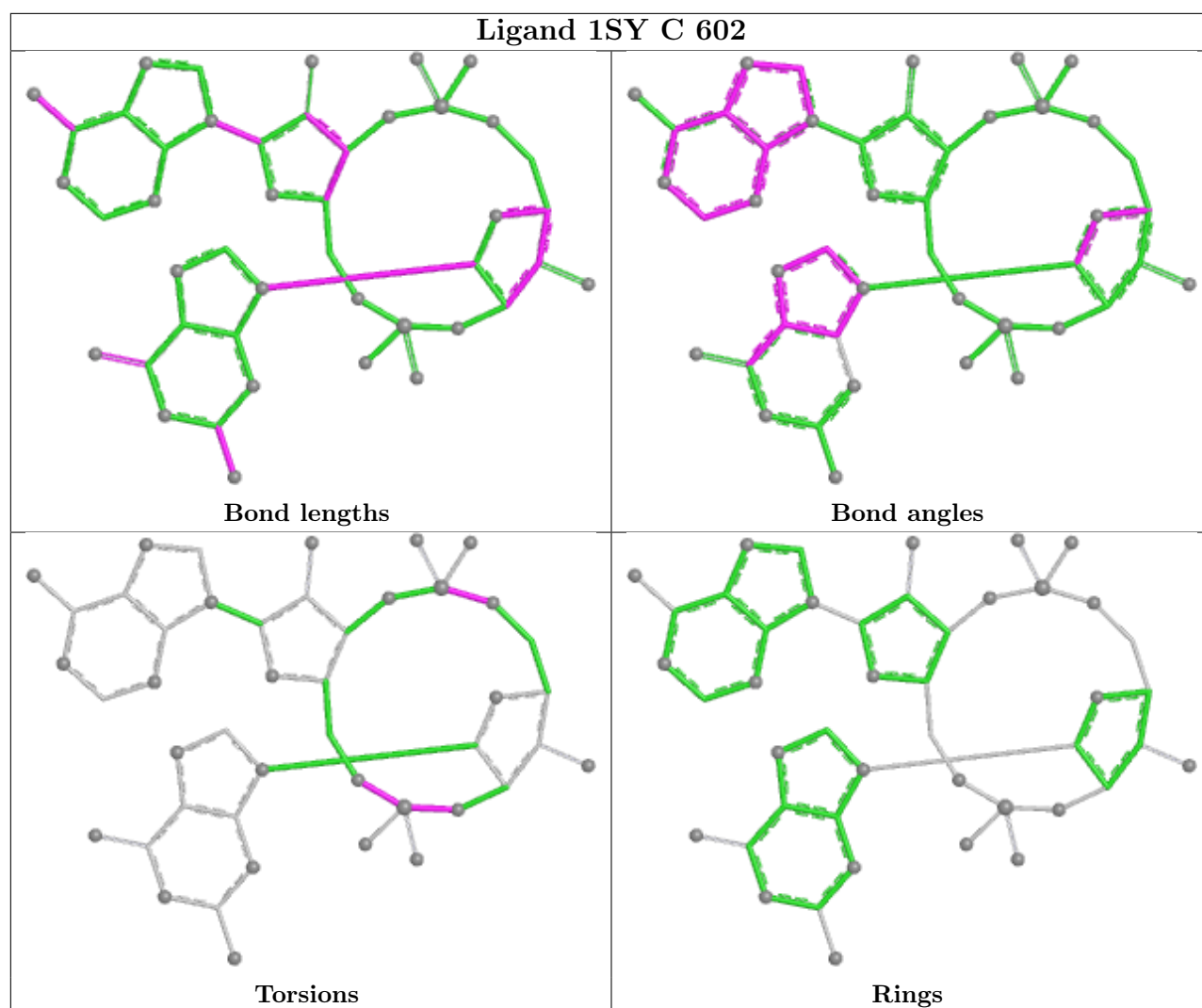
There are no ring outliers.

2 monomers are involved in 10 short contacts:

Mol	Chain	Res	Type	Clashes	Symm-Clashes
4	A	602	1SY	5	0
4	C	602	1SY	5	0

The following is a two-dimensional graphical depiction of Mogul quality analysis of bond lengths, bond angles, torsion angles, and ring geometry for all instances of the Ligand of Interest. In addition, ligands with molecular weight > 250 and outliers as shown on the validation Tables will also be included. For torsion angles, if less than 5% of the Mogul distribution of torsion angles is within 10 degrees of the torsion angle in question, then that torsion angle is considered an outlier. Any bond that is central to one or more torsion angles identified as an outlier by Mogul will be highlighted in the graph. For rings, the root-mean-square deviation (RMSD) between the ring in question and similar rings identified by Mogul is calculated over all ring torsion angles. If the average RMSD is greater than 60 degrees and the minimal RMSD between the ring in question and any Mogul-identified rings is also greater than 60 degrees, then that ring is considered an outlier. The outliers are highlighted in purple. The color gray indicates Mogul did not find sufficient equivalents in the CSD to analyse the geometry.





5.7 Other polymers [\(i\)](#)

There are no such residues in this entry.

5.8 Polymer linkage issues [\(i\)](#)

There are no chain breaks in this entry.

6 Fit of model and data [i](#)

6.1 Protein, DNA and RNA chains [i](#)

In the following table, the column labelled ‘#RSRZ> 2’ contains the number (and percentage) of RSRZ outliers, followed by percent RSRZ outliers for the chain as percentile scores relative to all X-ray entries and entries of similar resolution. The OWAB column contains the minimum, median, 95th percentile and maximum values of the occupancy-weighted average B-factor per residue. The column labelled ‘Q< 0.9’ lists the number of (and percentage) of residues with an average occupancy less than 0.9.

Mol	Chain	Analysed	<RSRZ>	#RSRZ>2	OWAB(Å ²)	Q<0.9
1	A	359/366 (98%)	-0.12	4 (1%) 78 82	36, 59, 106, 161	0
1	C	359/366 (98%)	-0.04	10 (2%) 55 61	35, 64, 130, 167	0
2	E	18/18 (100%)	-0.52	0 100 100	43, 72, 140, 142	0
2	F	18/18 (100%)	-0.57	0 100 100	49, 79, 127, 145	0
2	I	18/18 (100%)	-0.45	0 100 100	47, 76, 138, 139	0
2	J	18/18 (100%)	-0.22	0 100 100	51, 87, 158, 159	0
All	All	790/804 (98%)	-0.11	14 (1%) 67 72	35, 62, 130, 167	0

The worst 5 of 14 RSRZ outliers are listed below:

Mol	Chain	Res	Type	RSRZ
1	C	242	ILE	3.6
1	A	149	LYS	3.1
1	C	358	PHE	3.0
1	C	355	GLY	3.0
1	A	242	ILE	2.6

6.2 Non-standard residues in protein, DNA, RNA chains [i](#)

There are no non-standard protein/DNA/RNA residues in this entry.

6.3 Carbohydrates [i](#)

There are no oligosaccharides in this entry.

6.4 Ligands

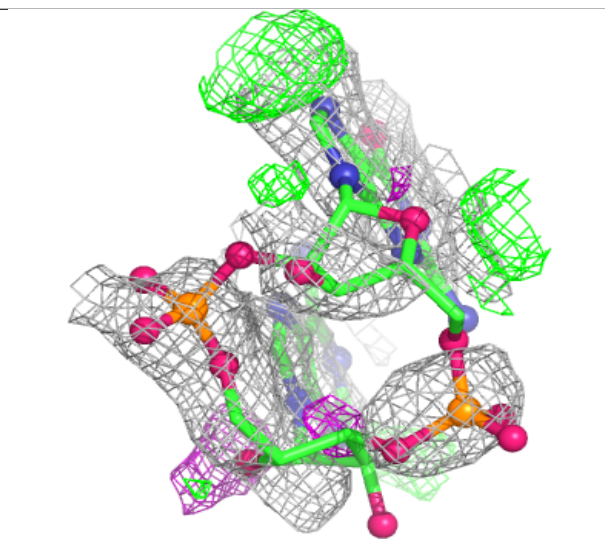
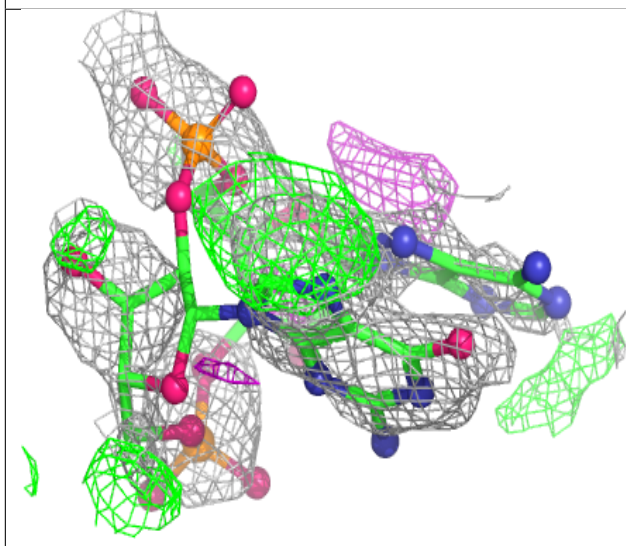
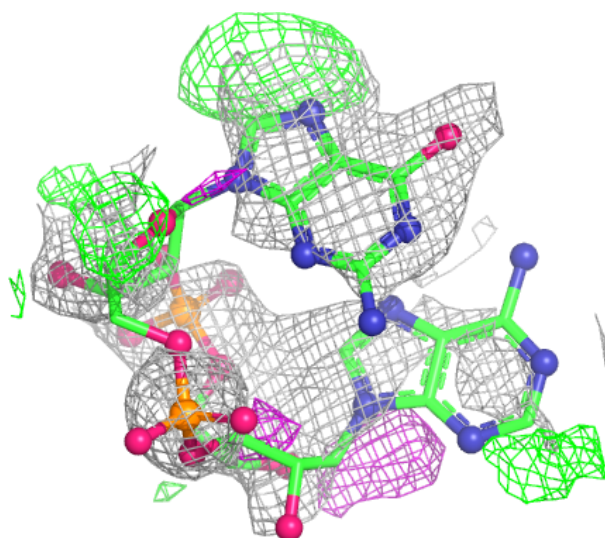
In the following table, the Atoms column lists the number of modelled atoms in the group and the number defined in the chemical component dictionary. The B-factors column lists the minimum, median, 95th percentile and maximum values of B factors of atoms in the group. The column labelled 'Q< 0.9' lists the number of atoms with occupancy less than 0.9.

Mol	Type	Chain	Res	Atoms	RSCC	RSR	B-factors(Å ²)	Q<0.9
4	1SY	A	602	45/45	0.65	0.20	62,89,117,141	45
4	1SY	C	602	45/45	0.85	0.14	43,61,76,84	45
3	ZN	A	601	1/1	1.00	0.05	44,44,44,44	0
3	ZN	C	601	1/1	1.00	0.04	43,43,43,43	0

The following is a graphical depiction of the model fit to experimental electron density of all instances of the Ligand of Interest. In addition, ligands with molecular weight > 250 and outliers as shown on the geometry validation Tables will also be included. Each fit is shown from different orientation to approximate a three-dimensional view.

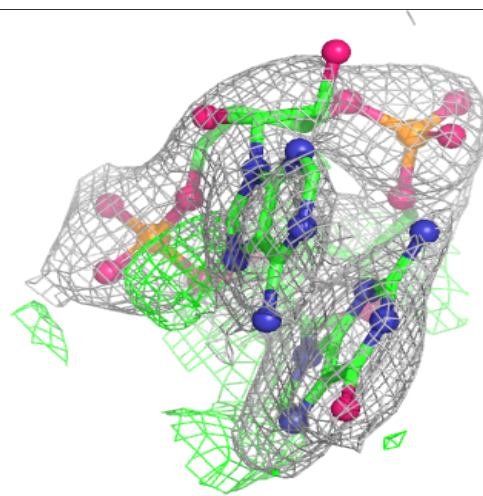
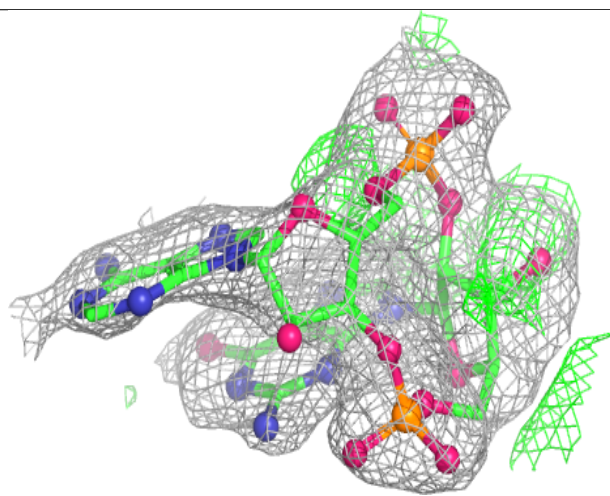
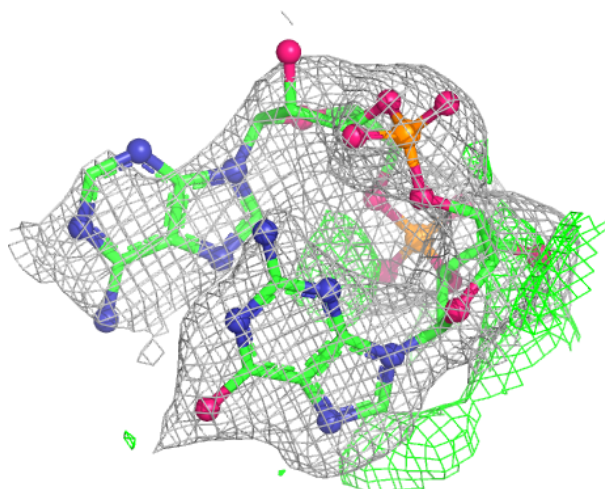
Electron density around 1SY A 602:

$2mF_o-DF_c$ (at 0.7 rmsd) in gray
 mF_o-DF_c (at 3 rmsd) in purple (negative)
and green (positive)



Electron density around 1SY C 602:

$2mF_o-DF_c$ (at 0.7 rmsd) in gray
 mF_o-DF_c (at 3 rmsd) in purple (negative)
and green (positive)



6.5 Other polymers [i](#)

There are no such residues in this entry.