



Full wwPDB X-ray Structure Validation Report ⓘ

Apr 19, 2026 – 06:34 AM UTC

PDB ID : 7LEV / pdb_00007lev
Title : The aminoacrylate form of the wild-type Salmonella typhimurium Tryptophan Synthase in complex with ammonium ion at the metal coordination site at 1.70 Angstrom resolution
Authors : Hilario, E.; Dunn, M.F.; Mueller, L.J.
Deposited on : 2021-01-15
Resolution : 1.70 Å(reported)

This is a Full wwPDB X-ray Structure Validation Report for a publicly released PDB entry.

We welcome your comments at validation@mail.wwpdb.org

A user guide is available at

<https://www.wwpdb.org/validation/2017/XrayValidationReportHelp>

with specific help available everywhere you see the ⓘ symbol.

The types of validation reports are described at

<http://www.wwpdb.org/validation/2017/FAQs#types>.

The following versions of software and data (see [references ⓘ](#)) were used in the production of this report:

MolProbity : 4-5-2 with Phenix2.0
Mogul : 2022.3.0, CSD as543be (2022)
Xtrriage (Phenix) : 2.0
EDS : 3.0
Buster-report : wwPDB partial adaption of 1.1.7 (2018)
Percentile statistics : 20250101.v01 (using entries in the PDB archive January 1st 2025)
CCP4 : 9.0.010 (Gargrove)
Density-Fitness : 1.0.12
Ideal geometry (proteins) : Engh & Huber (2001)
Ideal geometry (DNA, RNA) : Parkinson et al. (1996)
Validation Pipeline (wwPDB-VP) : 2.49

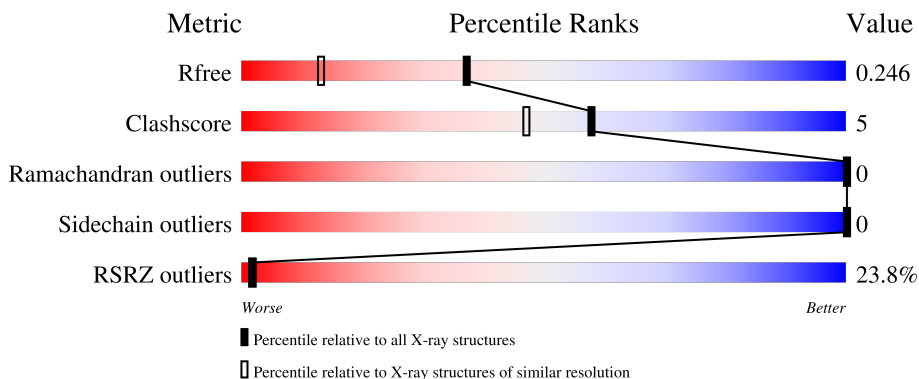
1 Overall quality at a glance

The following experimental techniques were used to determine the structure:

X-RAY DIFFRACTION

The reported resolution of this entry is 1.70 Å.

Percentile scores (ranging between 0-100) for global validation metrics of the entry are shown in the following graphic. The table shows the number of entries on which the scores are based.



Metric	Whole archive (#Entries)	Similar resolution (#Entries, resolution range(Å))
R_{free}	180053	5551 (1.70-1.70)
Clashscore	190562	5924 (1.70-1.70)
Ramachandran outliers	187476	5846 (1.70-1.70)
Sidechain outliers	187428	5846 (1.70-1.70)
RSRZ outliers	180081	5554 (1.70-1.70)

The table below summarises the geometric issues observed across the polymeric chains and their fit to the electron density. The red, orange, yellow and green segments of the lower bar indicate the fraction of residues that contain outliers for ≥ 3 , 2, 1 and 0 types of geometric quality criteria respectively. A grey segment represents the fraction of residues that are not modelled. The numeric value for each fraction is indicated below the corresponding segment, with a dot representing fractions $\leq 5\%$. The upper red bar (where present) indicates the fraction of residues that have poor fit to the electron density. The numeric value is given above the bar.

Mol	Chain	Length	Quality of chain
1	A	268	
2	B	397	

2 Entry composition [i](#)

There are 8 unique types of molecules in this entry. The entry contains 5152 atoms, of which 0 are hydrogens and 0 are deuteriums.

In the tables below, the ZeroOcc column contains the number of atoms modelled with zero occupancy, the AltConf column contains the number of residues with at least one atom in alternate conformation and the Trace column contains the number of residues modelled with at most 2 atoms.

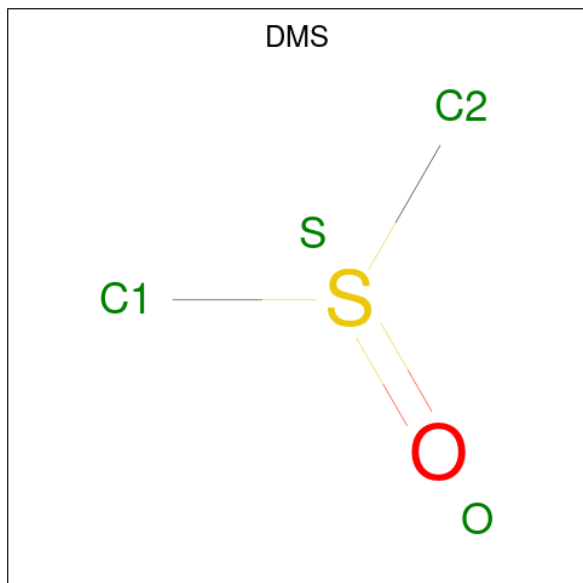
- Molecule 1 is a protein called Tryptophan synthase alpha chain.

Mol	Chain	Residues	Atoms					ZeroOcc	AltConf	Trace
			Total	C	N	O	S			
1	A	249	1805	1156	308	333	8	0	0	0

- Molecule 2 is a protein called Tryptophan synthase beta chain.

Mol	Chain	Residues	Atoms					ZeroOcc	AltConf	Trace
			Total	C	N	O	S			
2	B	377	2829	1787	494	530	18	0	4	0

- Molecule 3 is DIMETHYL SULFOXIDE (CCD ID: DMS) (formula: C₂H₆OS).



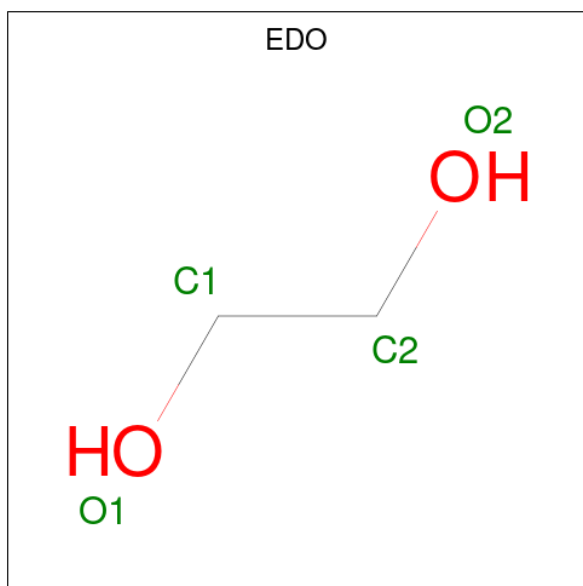
Mol	Chain	Residues	Atoms				ZeroOcc	AltConf
			Total	C	O	S		
3	A	1	4	2	1	1	0	0
3	B	1	4	2	1	1	0	0

Continued on next page...

Continued from previous page...

Mol	Chain	Residues	Atoms				ZeroOcc	AltConf
3	B	1	Total	C	O	S	0	0
			4	2	1	1		
3	B	1	Total	C	O	S	0	0
			4	2	1	1		
3	B	1	Total	C	O	S	0	0
			4	2	1	1		
3	B	1	Total	C	O	S	0	0
			4	2	1	1		
3	B	1	Total	C	O	S	0	0
			4	2	1	1		

- Molecule 4 is 1,2-ETHANEDIOL (CCD ID: EDO) (formula: C₂H₆O₂).

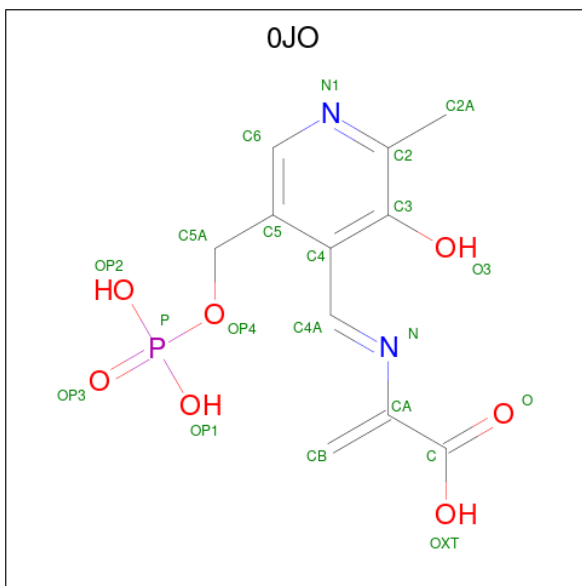


Mol	Chain	Residues	Atoms			ZeroOcc	AltConf
4	A	1	Total	C	O	0	0
			4	2	2		
4	A	1	Total	C	O	0	0
			4	2	2		
4	B	1	Total	C	O	0	0
			4	2	2		

- Molecule 5 is CHLORIDE ION (CCD ID: CL) (formula: Cl).

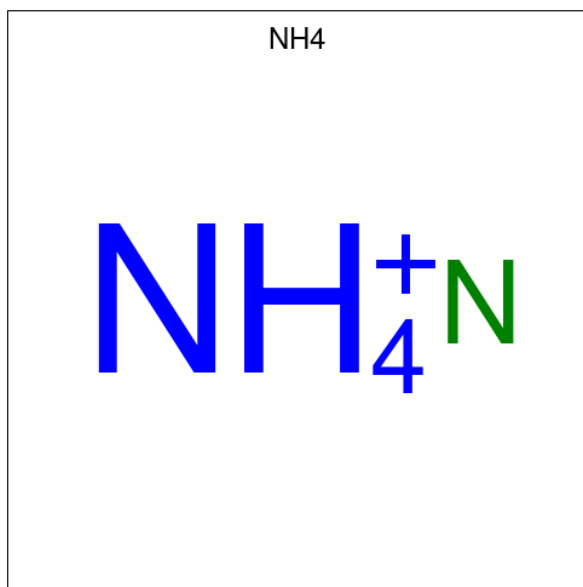
Mol	Chain	Residues	Atoms	ZeroOcc	AltConf
5	A	2	Total Cl 2 2	0	0
5	B	3	Total Cl 3 3	0	0

- Molecule 6 is 2-{[(E)-{3-hydroxy-2-methyl-5-[(phosphonoxy)methyl]pyridin-4-yl}methylidene]amino}prop-2-enoic acid (CCD ID: 0JO) (formula: C₁₁H₁₃N₂O₇P) (labeled as "Ligand of Interest" by depositor).



Mol	Chain	Residues	Atoms	ZeroOcc	AltConf
6	B	1	Total C N O P 21 11 2 7 1	0	0

- Molecule 7 is AMMONIUM ION (CCD ID: NH4) (formula: H₄N) (labeled as "Ligand of Interest" by depositor).



Mol	Chain	Residues	Atoms	ZeroOcc	AltConf
7	B	1	Total N 1 1	0	0

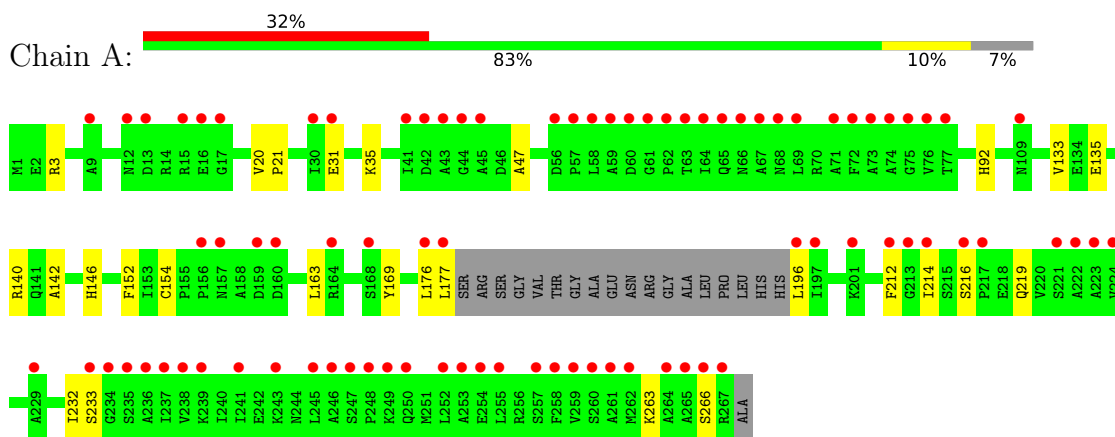
- Molecule 8 is water.

Mol	Chain	Residues	Atoms	ZeroOcc	AltConf
8	A	132	Total O 136 136	0	4
8	B	304	Total O 311 311	0	7

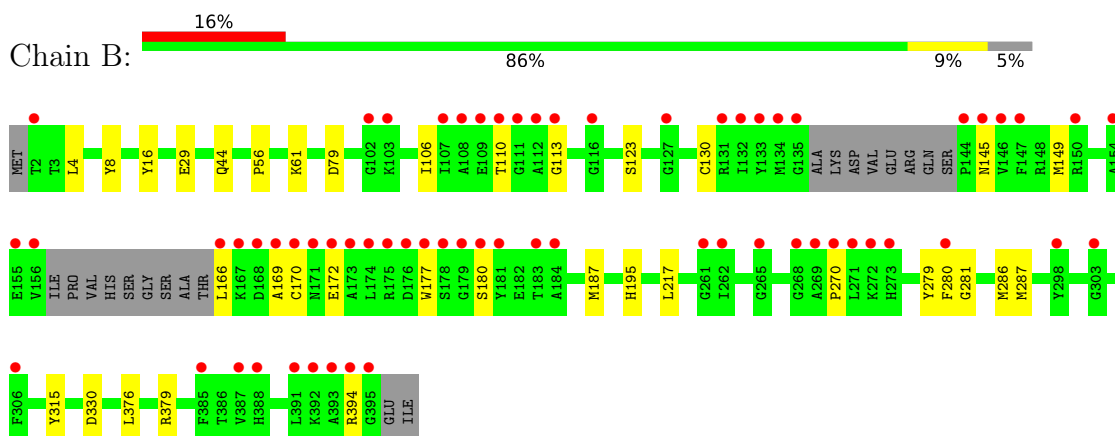
3 Residue-property plots [i](#)

These plots are drawn for all protein, RNA, DNA and oligosaccharide chains in the entry. The first graphic for a chain summarises the proportions of the various outlier classes displayed in the second graphic. The second graphic shows the sequence view annotated by issues in geometry and electron density. Residues are color-coded according to the number of geometric quality criteria for which they contain at least one outlier: green = 0, yellow = 1, orange = 2 and red = 3 or more. A red dot above a residue indicates a poor fit to the electron density ($RSRZ > 2$). Stretches of 2 or more consecutive residues without any outlier are shown as a green connector. Residues present in the sample, but not in the model, are shown in grey.

- Molecule 1: Tryptophan synthase alpha chain



- Molecule 2: Tryptophan synthase beta chain



4 Data and refinement statistics

Property	Value	Source
Space group	C 1 2 1	Depositor
Cell constants a, b, c, α , β , γ	183.39Å 59.61Å 67.23Å 90.00° 95.01° 90.00°	Depositor
Resolution (Å)	29.09 – 1.70 29.09 – 1.70	Depositor EDS
% Data completeness (in resolution range)	98.2 (29.09-1.70) 98.2 (29.09-1.70)	Depositor EDS
R_{merge}	0.07	Depositor
R_{sym}	0.07	Depositor
$\langle I/\sigma(I) \rangle$ ¹	2.22 (at 1.70Å)	Xtrriage
Refinement program	PHENIX 1.17.1-3660	Depositor
R, R_{free}	0.206 , 0.246 0.207 , 0.246	Depositor DCC
R_{free} test set	3811 reflections (4.78%)	wwPDB-VP
Wilson B-factor (Å ²)	24.0	Xtrriage
Anisotropy	0.027	Xtrriage
Bulk solvent k_{sol} (e/Å ³), B_{sol} (Å ²)	0.37 , 70.0	EDS
L-test for twinning ²	$\langle L \rangle = 0.48$, $\langle L^2 \rangle = 0.31$	Xtrriage
Estimated twinning fraction	No twinning to report.	Xtrriage
F_o, F_c correlation	0.95	EDS
Total number of atoms	5152	wwPDB-VP
Average B, all atoms (Å ²)	39.0	wwPDB-VP

Xtrriage's analysis on translational NCS is as follows: *The largest off-origin peak in the Patterson function is 5.56% of the height of the origin peak. No significant pseudotranslation is detected.*

¹Intensities estimated from amplitudes.

²Theoretical values of $\langle |L| \rangle$, $\langle L^2 \rangle$ for acentric reflections are 0.5, 0.333 respectively for untwinned datasets, and 0.375, 0.2 for perfectly twinned datasets.

5 Model quality [i](#)

5.1 Standard geometry [i](#)

Bond lengths and bond angles in the following residue types are not validated in this section: DMS, EDO, CL, NH4, OJO

The Z score for a bond length (or angle) is the number of standard deviations the observed value is removed from the expected value. A bond length (or angle) with $|Z| > 5$ is considered an outlier worth inspection. RMSZ is the root-mean-square of all Z scores of the bond lengths (or angles).

Mol	Chain	Bond lengths		Bond angles	
		RMSZ	# Z >5	RMSZ	# Z >5
1	A	0.23	0/1841	0.45	0/2513
2	B	0.31	0/2883	0.55	0/3899
All	All	0.28	0/4724	0.51	0/6412

There are no bond length outliers.

There are no bond angle outliers.

There are no chirality outliers.

There are no planarity outliers.

5.2 Too-close contacts [i](#)

In the following table, the Non-H and H(model) columns list the number of non-hydrogen atoms and hydrogen atoms in the chain respectively. The H(added) column lists the number of hydrogen atoms added and optimized by MolProbity. The Clashes column lists the number of clashes within the asymmetric unit, whereas Symm-Clashes lists symmetry-related clashes.

Mol	Chain	Non-H	H(model)	H(added)	Clashes	Symm-Clashes
1	A	1805	0	1759	17	0
2	B	2829	0	2766	26	0
3	A	4	0	6	0	0
3	B	28	0	42	3	0
4	A	8	0	12	1	0
4	B	4	0	6	1	0
5	A	2	0	0	1	0
5	B	3	0	0	0	0
6	B	21	0	10	0	0
7	B	1	0	0	0	0
8	A	136	0	0	1	0

Continued on next page...

Continued from previous page...

Mol	Chain	Non-H	H(model)	H(added)	Clashes	Symm-Clashes
8	B	311	0	0	2	0
All	All	5152	0	4601	42	0

The all-atom clashscore is defined as the number of clashes found per 1000 atoms (including hydrogen atoms). The all-atom clashscore for this structure is 5.

All (42) close contacts within the same asymmetric unit are listed below, sorted by their clash magnitude.

Atom-1	Atom-2	Interatomic distance (Å)	Clash overlap (Å)
2:B:61:LYS:H	3:B:407:DMS:H13	1.43	0.84
2:B:166:LEU:HB3	2:B:169:ALA:H	1.54	0.72
2:B:169:ALA:HA	2:B:172:GLU:HG2	1.75	0.67
1:A:135:GLU:OE2	8:A:401[A]:HOH:O	2.13	0.65
2:B:4:LEU:N	2:B:29:GLU:OE2	2.28	0.65
2:B:29:GLU:OE1	2:B:195:HIS:NE2	2.29	0.63
2:B:106:ILE:HD12	2:B:187:MET:HE3	1.82	0.62
2:B:61:LYS:N	3:B:407:DMS:H13	2.13	0.60
2:B:170:CYS:HB3	2:B:280:PHE:CE1	2.36	0.59
2:B:44:GLN:NE2	8:B:501:HOH:O	2.27	0.59
2:B:330:ASP:OD1	2:B:394:ARG:NH1	2.35	0.59
2:B:56:PRO:HD2	3:B:401:DMS:H22	1.89	0.54
1:A:135:GLU:OE1	2:B:8:TYR:OH	2.26	0.53
1:A:20:VAL:HG22	1:A:47:ALA:HB3	1.92	0.51
1:A:216:SER:N	1:A:219:GLN:OE1	2.43	0.51
1:A:154:CYS:HB3	1:A:176:LEU:HD12	1.92	0.50
2:B:177:TRP:HA	2:B:180:SER:HB3	1.94	0.50
1:A:177:LEU:HD22	1:A:212:PHE:HD1	1.77	0.49
1:A:20:VAL:HB	1:A:232:ILE:HG12	1.94	0.49
2:B:79:ASP:HB2	2:B:379:ARG:HB3	1.96	0.47
2:B:217[A]:LEU:HG	8:B:610:HOH:O	2.15	0.47
1:A:31:GLU:O	1:A:35:LYS:HG3	2.15	0.46
2:B:16:TYR:O	2:B:281:GLY:HA2	2.16	0.46
2:B:110:THR:HG21	2:B:149:MET:HE1	1.98	0.45
2:B:286:MET:HB3	2:B:286:MET:HE2	1.75	0.45
2:B:166:LEU:HB2	2:B:169:ALA:HB2	1.98	0.44
1:A:3:ARG:HH12	4:A:302:EDO:H21	1.83	0.44
2:B:113:GLY:HA3	2:B:145:ASN:OD1	2.17	0.44
1:A:163:LEU:HD21	1:A:196:LEU:HD22	2.00	0.43
2:B:270:PRO:HB3	2:B:287:MET:HG3	2.01	0.43
1:A:133:VAL:HG22	1:A:169:TYR:HD2	1.83	0.43
2:B:315:TYR:CE2	4:B:409:EDO:H11	2.53	0.43

Continued on next page...

Continued from previous page...

Atom-1	Atom-2	Interatomic distance (Å)	Clash overlap (Å)
2:B:376:LEU:HD12	2:B:376:LEU:HA	1.95	0.43
1:A:140:ARG:HG2	1:A:152:PHE:HZ	1.83	0.42
2:B:123:SER:CB	2:B:130:CYS:HB2	2.49	0.42
1:A:263:LYS:O	1:A:266:SER:OG	2.37	0.42
1:A:142:ALA:O	1:A:146:HIS:HD2	2.02	0.41
1:A:214:ILE:HB	1:A:233:SER:HA	2.02	0.41
2:B:145:ASN:O	2:B:149:MET:HG3	2.21	0.41
1:A:21:PRO:HD2	1:A:47:ALA:O	2.20	0.41
1:A:92:HIS:HB3	5:A:304:CL:CL	2.58	0.41
2:B:279:TYR:CG	2:B:280:PHE:N	2.89	0.40

There are no symmetry-related clashes.

5.3 Torsion angles [i](#)

5.3.1 Protein backbone [i](#)

In the following table, the Percentiles column shows the percent Ramachandran outliers of the chain as a percentile score with respect to all X-ray entries followed by that with respect to entries of similar resolution.

The Analysed column shows the number of residues for which the backbone conformation was analysed, and the total number of residues.

Mol	Chain	Analysed	Favoured	Allowed	Outliers	Percentiles	
1	A	245/268 (91%)	242 (99%)	3 (1%)	0	100	100
2	B	375/397 (94%)	367 (98%)	8 (2%)	0	100	100
All	All	620/665 (93%)	609 (98%)	11 (2%)	0	100	100

There are no Ramachandran outliers to report.

5.3.2 Protein sidechains [i](#)

In the following table, the Percentiles column shows the percent sidechain outliers of the chain as a percentile score with respect to all X-ray entries followed by that with respect to entries of similar resolution.

The Analysed column shows the number of residues for which the sidechain conformation was analysed, and the total number of residues.

Mol	Chain	Analysed	Rotameric	Outliers	Percentiles	
1	A	175/208 (84%)	175 (100%)	0	100	100
2	B	282/311 (91%)	282 (100%)	0	100	100
All	All	457/519 (88%)	457 (100%)	0	100	100

There are no protein residues with a non-rotameric sidechain to report.

Sometimes sidechains can be flipped to improve hydrogen bonding and reduce clashes. All (4) such sidechains are listed below:

Mol	Chain	Res	Type
1	A	109	ASN
1	A	244	ASN
2	B	82	HIS
2	B	145	ASN

5.3.3 RNA [i](#)

There are no RNA molecules in this entry.

5.4 Non-standard residues in protein, DNA, RNA chains [i](#)

There are no non-standard protein/DNA/RNA residues in this entry.

5.5 Carbohydrates [i](#)

There are no oligosaccharides in this entry.

5.6 Ligand geometry [i](#)

Of 18 ligands modelled in this entry, 5 are monoatomic and 1 is modelled with single atom - leaving 12 for Mogul analysis.

In the following table, the Counts columns list the number of bonds (or angles) for which Mogul statistics could be retrieved, the number of bonds (or angles) that are observed in the model and the number of bonds (or angles) that are defined in the Chemical Component Dictionary. The Link column lists molecule types, if any, to which the group is linked. The Z score for a bond length (or angle) is the number of standard deviations the observed value is removed from the expected value. A bond length (or angle) with $|Z| > 2$ is considered an outlier worth inspection. RMSZ is the root-mean-square of all Z scores of the bond lengths (or angles).

Mol	Type	Chain	Res	Link	Bond lengths			Bond angles		
					Counts	RMSZ	# Z > 2	Counts	RMSZ	# Z > 2
3	DMS	B	408	-	3,3,3	0.68	0	3,3,3	0.71	0
3	DMS	B	405	-	3,3,3	0.67	0	3,3,3	0.44	0
3	DMS	B	402	-	3,3,3	0.65	0	3,3,3	0.65	0
3	DMS	B	401	-	3,3,3	0.68	0	3,3,3	0.62	0
3	DMS	B	407	-	3,3,3	0.61	0	3,3,3	0.41	0
4	EDO	A	302	-	3,3,3	0.54	0	2,2,2	0.30	0
4	EDO	A	303	-	3,3,3	0.50	0	2,2,2	0.29	0
4	EDO	B	409	-	3,3,3	0.43	0	2,2,2	0.39	0
6	0JO	B	406	-	20,21,21	1.93	5 (25%)	23,30,30	1.06	2 (8%)
3	DMS	B	404	-	3,3,3	0.68	0	3,3,3	0.50	0
3	DMS	B	403	-	3,3,3	0.65	0	3,3,3	0.54	0
3	DMS	A	301	-	3,3,3	0.67	0	3,3,3	0.59	0

In the following table, the Chirals column lists the number of chiral outliers, the number of chiral centers analysed, the number of these observed in the model and the number defined in the Chemical Component Dictionary. Similar counts are reported in the Torsion and Rings columns. '-' means no outliers of that kind were identified.

Mol	Type	Chain	Res	Link	Chirals	Torsions	Rings
6	0JO	B	406	-	-	0/11/15/15	0/1/1/1
4	EDO	A	303	-	-	0/1/1/1	-
4	EDO	B	409	-	-	0/1/1/1	-
4	EDO	A	302	-	-	1/1/1/1	-

All (5) bond length outliers are listed below:

Mol	Chain	Res	Type	Atoms	Z	Observed(Å)	Ideal(Å)
6	B	406	0JO	C4-C5	-4.32	1.36	1.42
6	B	406	0JO	C4-C3	-3.10	1.36	1.41
6	B	406	0JO	C4-C4A	3.07	1.53	1.46
6	B	406	0JO	C4A-N	-2.69	1.25	1.28
6	B	406	0JO	CA-N	2.02	1.45	1.36

All (2) bond angle outliers are listed below:

Mol	Chain	Res	Type	Atoms	Z	Observed(°)	Ideal(°)
6	B	406	0JO	C5-C6-N1	-2.34	120.03	123.83
6	B	406	0JO	C3-C4-C5	2.08	119.95	118.28

There are no chirality outliers.

All (1) torsion outliers are listed below:

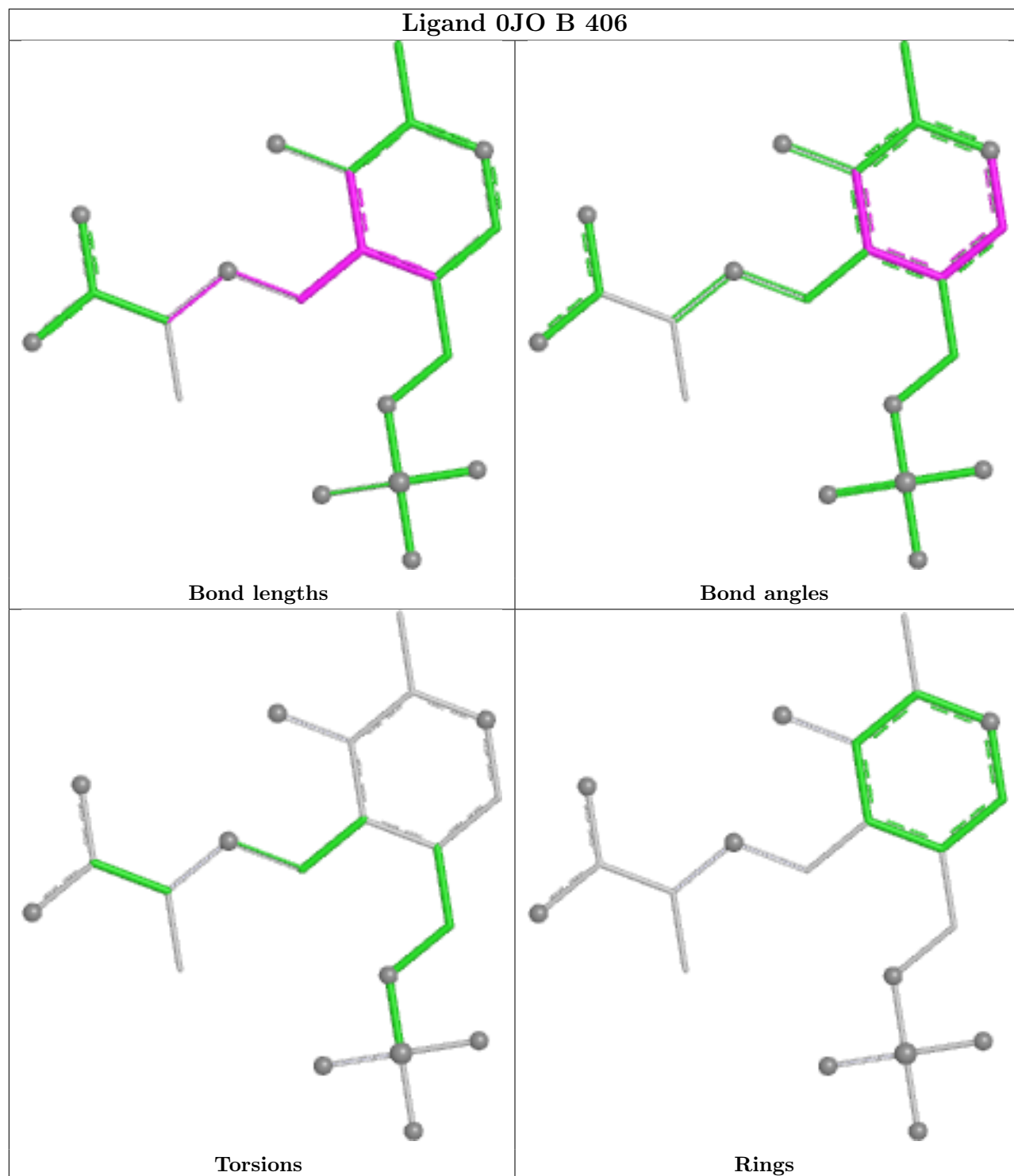
Mol	Chain	Res	Type	Atoms
4	A	302	EDO	O1-C1-C2-O2

There are no ring outliers.

4 monomers are involved in 5 short contacts:

Mol	Chain	Res	Type	Clashes	Symm-Clashes
3	B	401	DMS	1	0
3	B	407	DMS	2	0
4	A	302	EDO	1	0
4	B	409	EDO	1	0

The following is a two-dimensional graphical depiction of Mogul quality analysis of bond lengths, bond angles, torsion angles, and ring geometry for all instances of the Ligand of Interest. In addition, ligands with molecular weight > 250 and outliers as shown on the validation Tables will also be included. For torsion angles, if less than 5% of the Mogul distribution of torsion angles is within 10 degrees of the torsion angle in question, then that torsion angle is considered an outlier. Any bond that is central to one or more torsion angles identified as an outlier by Mogul will be highlighted in the graph. For rings, the root-mean-square deviation (RMSD) between the ring in question and similar rings identified by Mogul is calculated over all ring torsion angles. If the average RMSD is greater than 60 degrees and the minimal RMSD between the ring in question and any Mogul-identified rings is also greater than 60 degrees, then that ring is considered an outlier. The outliers are highlighted in purple. The color gray indicates Mogul did not find sufficient equivalents in the CSD to analyse the geometry.



5.7 Other polymers [\(i\)](#)

There are no such residues in this entry.

5.8 Polymer linkage issues

There are no chain breaks in this entry.

6 Fit of model and data

6.1 Protein, DNA and RNA chains

In the following table, the column labelled ‘#RSRZ > 2’ contains the number (and percentage) of RSRZ outliers, followed by percent RSRZ outliers for the chain as percentile scores relative to all X-ray entries and entries of similar resolution. The OWAB column contains the minimum, median, 95th percentile and maximum values of the occupancy-weighted average B-factor per residue. The column labelled ‘Q < 0.9’ lists the number of (and percentage) of residues with an average occupancy less than 0.9.

Mol	Chain	Analysed	<RSRZ>	#RSRZ>2	OWAB(Å ²)	Q<0.9
1	A	249/268 (92%)	1.58	85 (34%) 1 1	21, 46, 80, 113	0
2	B	377/397 (94%)	0.68	64 (16%) 4 3	10, 27, 76, 119	4 (1%)
All	All	626/665 (94%)	1.04	149 (23%) 2 2	10, 33, 79, 119	4 (0%)

All (149) RSRZ outliers are listed below:

Mol	Chain	Res	Type	RSRZ
1	A	73	ALA	7.3
2	B	166	LEU	7.3
1	A	253	ALA	6.8
2	B	134	MET	6.7
2	B	146	VAL	6.3
2	B	169	ALA	5.8
1	A	157	ASN	5.8
2	B	168	ASP	5.5
2	B	173	ALA	5.3
2	B	112	ALA	5.3
2	B	179	GLY	5.3
1	A	69	LEU	5.2
2	B	175	ARG	5.2
2	B	174	LEU	5.1
2	B	111	GLY	5.1
1	A	264	ALA	4.9
1	A	222	ALA	4.9
1	A	216	SER	4.9
2	B	171	ASN	4.8
1	A	61	GLY	4.8
1	A	247	SER	4.7
1	A	212	PHE	4.7
1	A	213	GLY	4.7
1	A	246	ALA	4.7

Continued on next page...

Continued from previous page...

Mol	Chain	Res	Type	RSRZ
1	A	236	ALA	4.4
1	A	59	ALA	4.4
2	B	271	LEU	4.3
2	B	156	VAL	4.2
1	A	177	LEU	4.2
2	B	144	PRO	4.1
2	B	167	LYS	4.1
2	B	178	SER	4.1
2	B	268	GLY	4.0
1	A	238	VAL	4.0
2	B	176	ASP	4.0
1	A	63	THR	3.9
2	B	172	GLU	3.9
2	B	133	TYR	3.8
1	A	239	LYS	3.8
1	A	60	ASP	3.8
1	A	72	PHE	3.7
2	B	385	PHE	3.7
2	B	145	ASN	3.7
1	A	243	LYS	3.7
2	B	395	GLY	3.7
2	B	2	THR	3.7
2	B	261	GLY	3.7
2	B	113	GLY	3.6
2	B	170	CYS	3.5
1	A	77	THR	3.5
2	B	154	ALA	3.5
1	A	64	ILE	3.4
2	B	181	TYR	3.4
2	B	180	SER	3.4
2	B	135	GLY	3.4
1	A	233	SER	3.4
1	A	44	GLY	3.3
1	A	214	ILE	3.3
2	B	177	TRP	3.3
1	A	266	SER	3.2
2	B	183	THR	3.2
1	A	197	ILE	3.2
1	A	221	SER	3.2
1	A	234	GLY	3.2
1	A	248	PRO	3.2
1	A	12	ASN	3.1

Continued on next page...

Continued from previous page...

Mol	Chain	Res	Type	RSRZ
2	B	150	ARG	3.1
2	B	306	PHE	3.1
2	B	155	GLU	3.1
2	B	272	LYS	3.1
1	A	258	PHE	3.1
2	B	273	HIS	3.1
1	A	65	GLN	3.1
1	A	196	LEU	3.1
2	B	132	ILE	3.0
1	A	75	GLY	3.0
1	A	249	LYS	3.0
1	A	15	ARG	3.0
1	A	58	LEU	2.9
1	A	45	ALA	2.9
1	A	57	PRO	2.9
1	A	262	MET	2.9
1	A	201	LYS	2.9
1	A	254	GLU	2.9
1	A	265	ALA	2.9
1	A	260	SER	2.8
1	A	250	GLN	2.8
1	A	237	ILE	2.8
2	B	388	HIS	2.8
1	A	43	ALA	2.7
1	A	156	PRO	2.7
1	A	109	ASN	2.7
1	A	224	VAL	2.7
1	A	42	ASP	2.7
2	B	269	ALA	2.7
1	A	68	ASN	2.6
1	A	164	ARG	2.6
1	A	74	ALA	2.6
1	A	62	PRO	2.6
1	A	66	ASN	2.6
2	B	110	THR	2.6
2	B	131	ARG	2.6
1	A	159	ASP	2.6
1	A	257	SER	2.6
2	B	184	ALA	2.6
1	A	252	LEU	2.6
2	B	391	LEU	2.6
1	A	223	ALA	2.5

Continued on next page...

Continued from previous page...

Mol	Chain	Res	Type	RSRZ
1	A	261	ALA	2.5
2	B	127	GLY	2.5
1	A	31	GLU	2.5
1	A	245	LEU	2.5
2	B	109	GLU	2.5
2	B	303	GLY	2.4
2	B	298	TYR	2.4
1	A	235	SER	2.4
1	A	13	ASP	2.4
1	A	16	GLU	2.4
1	A	17	GLY	2.4
2	B	265	GLY	2.4
2	B	392	LYS	2.4
1	A	67	ALA	2.3
1	A	160	ASP	2.3
2	B	147	PHE	2.3
2	B	262	ILE	2.3
1	A	56	ASP	2.3
2	B	270	PRO	2.3
1	A	71	ALA	2.3
2	B	108	ALA	2.3
1	A	241	ILE	2.3
1	A	267	ARG	2.3
2	B	116	GLY	2.3
1	A	259	VAL	2.3
1	A	9	ALA	2.2
1	A	176	LEU	2.2
1	A	255	LEU	2.2
2	B	280	PHE	2.2
1	A	30	ILE	2.2
2	B	102	GLY	2.2
1	A	217	PRO	2.2
2	B	387	VAL	2.2
1	A	168	SER	2.2
1	A	76	VAL	2.1
2	B	103	LYS	2.1
2	B	107	ILE	2.1
2	B	394	ARG	2.1
1	A	41	ILE	2.1
2	B	393	ALA	2.1
1	A	229	ALA	2.0

6.2 Non-standard residues in protein, DNA, RNA chains [i](#)

There are no non-standard protein/DNA/RNA residues in this entry.

6.3 Carbohydrates [i](#)

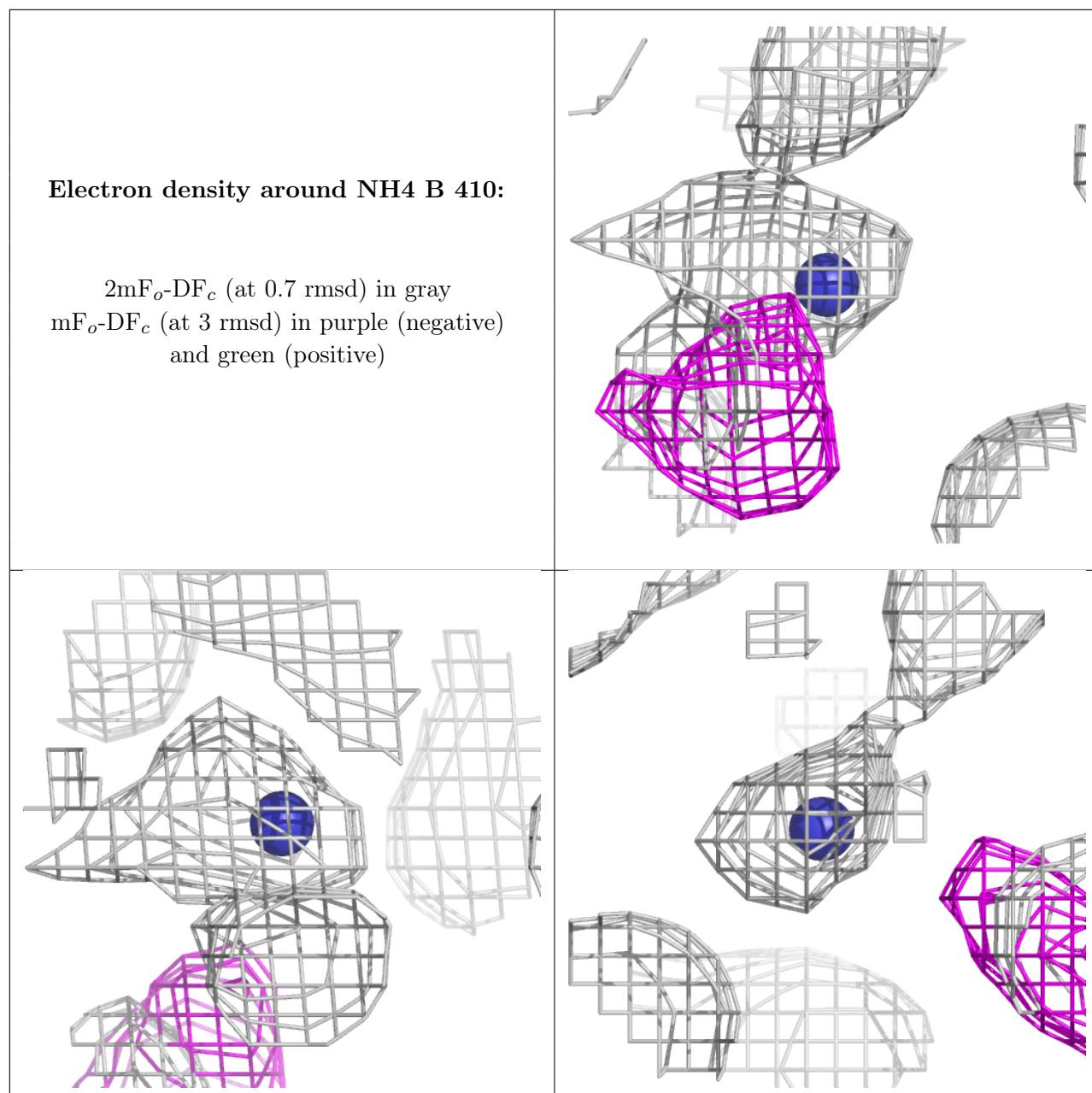
There are no oligosaccharides in this entry.

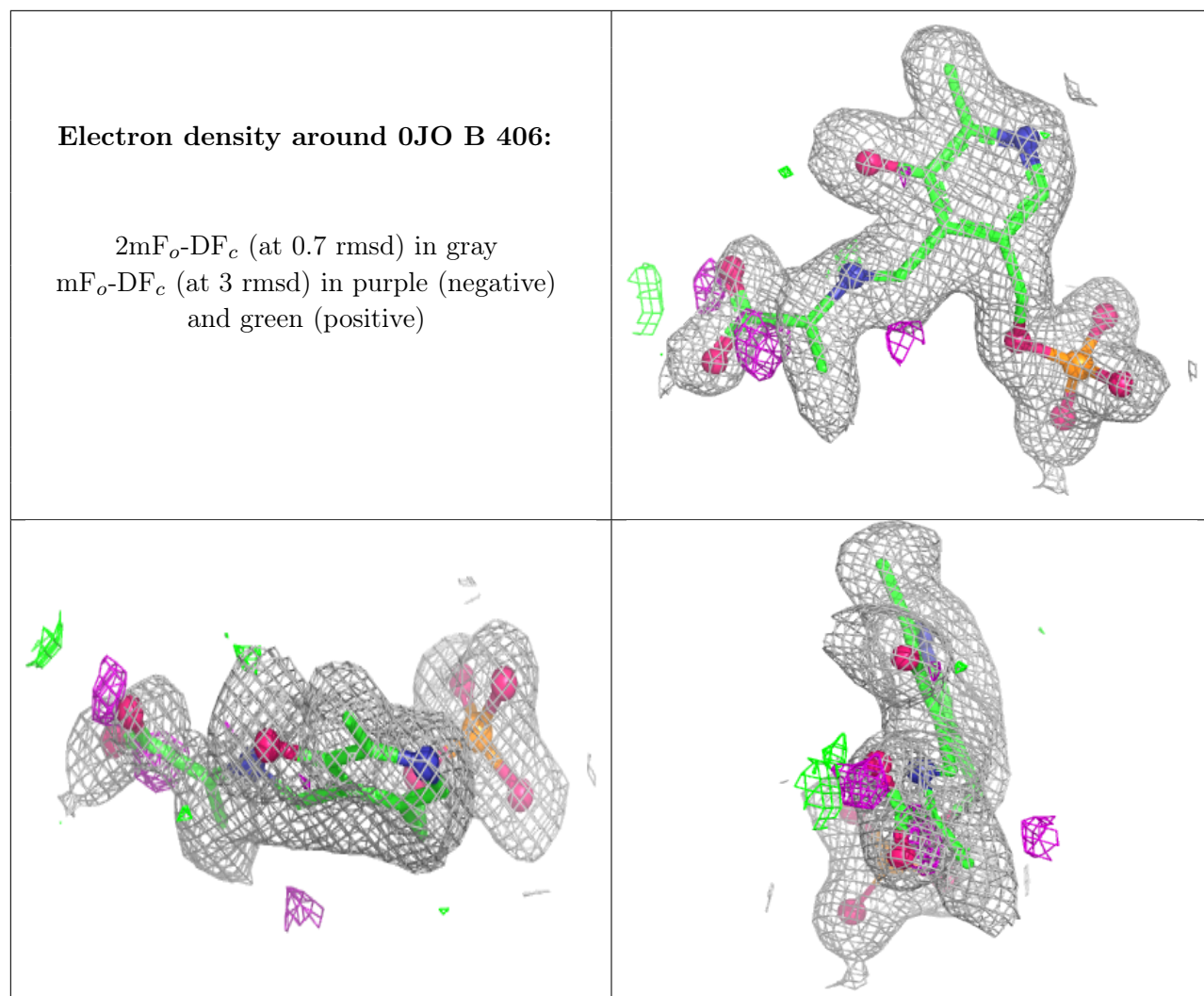
6.4 Ligands [i](#)

In the following table, the Atoms column lists the number of modelled atoms in the group and the number defined in the chemical component dictionary. The B-factors column lists the minimum, median, 95th percentile and maximum values of B factors of atoms in the group. The column labelled 'Q< 0.9' lists the number of atoms with occupancy less than 0.9.

Mol	Type	Chain	Res	Atoms	RSCC	RSR	B-factors(\AA^2)	Q<0.9
4	EDO	A	302	4/4	0.73	0.18	47,49,52,53	0
5	CL	A	305	1/1	0.74	0.21	85,85,85,85	0
7	NH4	B	410	1/1	0.76	0.24	41,41,41,41	0
3	DMS	B	401	4/4	0.77	0.21	61,73,79,81	0
3	DMS	A	301	4/4	0.77	0.20	74,74,81,83	0
4	EDO	B	409	4/4	0.84	0.15	39,40,46,62	0
3	DMS	B	403	4/4	0.85	0.16	64,67,70,74	0
5	CL	B	411	1/1	0.87	0.13	76,76,76,76	0
3	DMS	B	404	4/4	0.87	0.14	72,76,79,80	0
3	DMS	B	408	4/4	0.89	0.18	32,42,46,48	0
5	CL	B	412	1/1	0.90	0.13	77,77,77,77	0
4	EDO	A	303	4/4	0.91	0.10	36,40,48,55	0
3	DMS	B	407	4/4	0.92	0.11	32,45,46,48	0
3	DMS	B	405	4/4	0.93	0.11	59,64,65,68	0
5	CL	B	413	1/1	0.94	0.12	62,62,62,62	0
3	DMS	B	402	4/4	0.95	0.10	53,54,56,57	0
6	OJO	B	406	21/21	0.96	0.09	20,24,47,52	0
5	CL	A	304	1/1	0.97	0.11	49,49,49,49	0

The following is a graphical depiction of the model fit to experimental electron density of all instances of the Ligand of Interest. In addition, ligands with molecular weight > 250 and outliers as shown on the geometry validation Tables will also be included. Each fit is shown from different orientation to approximate a three-dimensional view.





6.5 Other polymers [i](#)

There are no such residues in this entry.