



# wwPDB X-ray Structure Validation Summary Report

Mar 5, 2026 – 01:25 PM UTC

PDB ID : 3LFM / pdb\_00003lfm  
Title : Crystal structure of the fat mass and obesity associated (FTO) protein reveals basis for its substrate specificity  
Authors : Chai, J.; Han, Z.  
Deposited on : 2010-01-18  
Resolution : 2.50 Å (reported)

This is a wwPDB X-ray Structure Validation Summary Report for a publicly released PDB entry.

We welcome your comments at [validation@mail.wwpdb.org](mailto:validation@mail.wwpdb.org)

A user guide is available at

<https://www.wwpdb.org/validation/2017/XrayValidationReportHelp>

with specific help available everywhere you see the  symbol.

The types of validation reports are described at

<http://www.wwpdb.org/validation/2017/FAQs#types>.

---

The following versions of software and data (see [references](#) ) were used in the production of this report:

MolProbity : 4-5-2 with Phenix2.0  
Mogul : 2022.3.0, CSD as543be (2022)  
Xtrriage (Phenix) : 2.0  
EDS : 3.0  
Buster-report : wwPDB partial adaption of 1.1.7 (2018)  
Percentile statistics : 20250101.v01 (using entries in the PDB archive January 1st 2025)  
CCP4 : 9.0.010 (Gargrove)  
Density-Fitness : 1.0.12  
Ideal geometry (proteins) : Engh & Huber (2001)  
Ideal geometry (DNA, RNA) : Parkinson et al. (1996)  
Validation Pipeline (wwPDB-VP) : 2.49

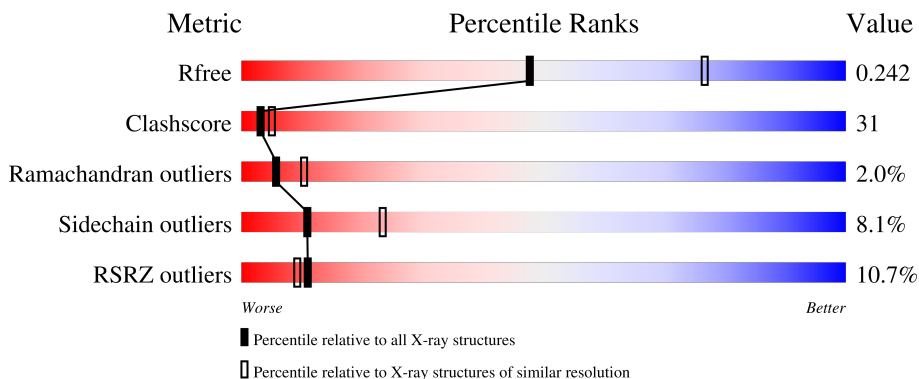
# 1 Overall quality at a glance

The following experimental techniques were used to determine the structure:

*X-RAY DIFFRACTION*

The reported resolution of this entry is 2.50 Å.

Percentile scores (ranging between 0-100) for global validation metrics of the entry are shown in the following graphic. The table shows the number of entries on which the scores are based.



Metric	Whole archive (#Entries)	Similar resolution (#Entries, resolution range(Å))
$R_{free}$	180053	5829 (2.50-2.50)
Clashscore	190562	6492 (2.50-2.50)
Ramachandran outliers	187476	6378 (2.50-2.50)
Sidechain outliers	187428	6380 (2.50-2.50)
RSRZ outliers	180081	5833 (2.50-2.50)

The table below summarises the geometric issues observed across the polymeric chains and their fit to the electron density. The red, orange, yellow and green segments of the lower bar indicate the fraction of residues that contain outliers for  $\geq 3$ , 2, 1 and 0 types of geometric quality criteria respectively. A grey segment represents the fraction of residues that are not modelled. The numeric value for each fraction is indicated below the corresponding segment, with a dot representing fractions  $\leq 5\%$ . The upper red bar (where present) indicates the fraction of residues that have poor fit to the electron density. The numeric value is given above the bar.

Mol	Chain	Length	Quality of chain
1	A	495	

## 2 Entry composition [i](#)

There are 4 unique types of molecules in this entry. The entry contains 3436 atoms, of which 0 are hydrogens and 0 are deuteriums.

In the tables below, the ZeroOcc column contains the number of atoms modelled with zero occupancy, the AltConf column contains the number of residues with at least one atom in alternate conformation and the Trace column contains the number of residues modelled with at most 2 atoms.

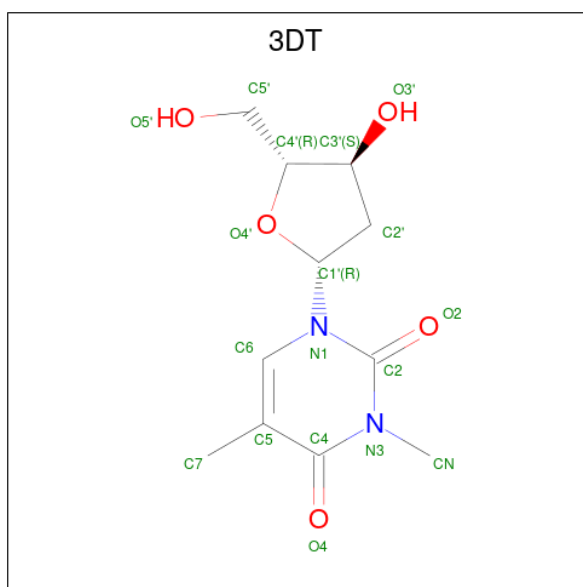
- Molecule 1 is a protein called Protein fto.

Mol	Chain	Residues	Atoms					ZeroOcc	AltConf	Trace
			Total	C	N	O	S			
1	A	420	3407	2161	590	634	22	0	0	0

There are 21 discrepancies between the modelled and reference sequences:

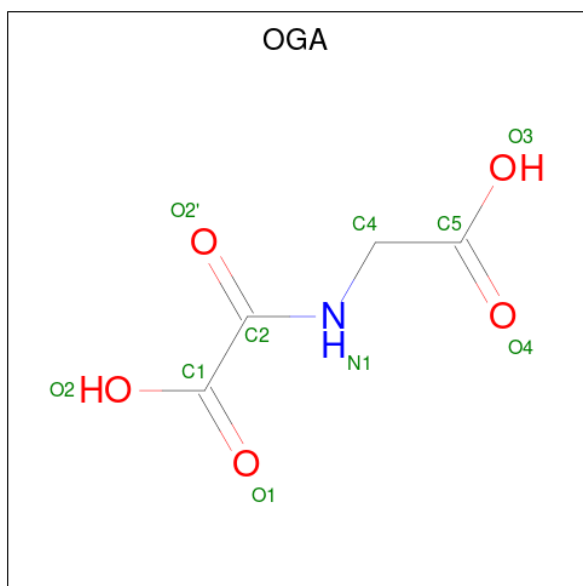
Chain	Residue	Modelled	Actual	Comment	Reference
A	11	MET	-	expression tag	UNP Q9C0B1
A	12	GLY	-	expression tag	UNP Q9C0B1
A	13	SER	-	expression tag	UNP Q9C0B1
A	14	SER	-	expression tag	UNP Q9C0B1
A	15	HIS	-	expression tag	UNP Q9C0B1
A	16	HIS	-	expression tag	UNP Q9C0B1
A	17	HIS	-	expression tag	UNP Q9C0B1
A	18	HIS	-	expression tag	UNP Q9C0B1
A	19	HIS	-	expression tag	UNP Q9C0B1
A	20	HIS	-	expression tag	UNP Q9C0B1
A	21	SER	-	expression tag	UNP Q9C0B1
A	22	SER	-	expression tag	UNP Q9C0B1
A	23	GLY	-	expression tag	UNP Q9C0B1
A	24	LEU	-	expression tag	UNP Q9C0B1
A	25	VAL	-	expression tag	UNP Q9C0B1
A	26	PRO	-	expression tag	UNP Q9C0B1
A	27	ARG	-	expression tag	UNP Q9C0B1
A	28	GLY	-	expression tag	UNP Q9C0B1
A	29	SER	-	expression tag	UNP Q9C0B1
A	30	HIS	-	expression tag	UNP Q9C0B1
A	31	MET	-	expression tag	UNP Q9C0B1

- Molecule 2 is 3-methylthymidine (CCD ID: 3DT) (formula:  $C_{11}H_{16}N_2O_5$ ).



Mol	Chain	Residues	Atoms				ZeroOcc	AltConf
			Total	C	N	O		
2	A	1	18	11	2	5	0	0

- Molecule 3 is N-OXALYLGLYCINE (CCD ID: OGA) (formula:  $C_4H_5NO_5$ ).



Mol	Chain	Residues	Atoms				ZeroOcc	AltConf
			Total	C	N	O		
3	A	1	10	4	1	5	0	0

- Molecule 4 is FE (II) ION (CCD ID: FE2) (formula: Fe).

<b>Mol</b>	<b>Chain</b>	<b>Residues</b>	<b>Atoms</b>		<b>ZeroOcc</b>	<b>AltConf</b>
4	A	1	Total	Fe	0	0
			1	1		



## 4 Data and refinement statistics i

Property	Value	Source
Space group	H 3	Depositor
Cell constants a, b, c, $\alpha$ , $\beta$ , $\gamma$	142.86Å 142.86Å 83.80Å 90.00° 90.00° 120.00°	Depositor
Resolution (Å)	20.00 – 2.50 20.00 – 2.50	Depositor EDS
% Data completeness (in resolution range)	98.4 (20.00-2.50) 98.4 (20.00-2.50)	Depositor EDS
$R_{merge}$	(Not available)	Depositor
$R_{sym}$	(Not available)	Depositor
$\langle I/\sigma(I) \rangle$ <sup>1</sup>	3.19 (at 2.39Å)	Xtriage
Refinement program	CNS	Depositor
R, $R_{free}$	0.239 , 0.285 0.259 , 0.242	Depositor DCC
$R_{free}$ test set	1250 reflections (5.02%)	wwPDB-VP
Wilson B-factor (Å <sup>2</sup> )	62.2	Xtriage
Anisotropy	0.327	Xtriage
Bulk solvent $k_{sol}$ (e/Å <sup>3</sup> ), $B_{sol}$ (Å <sup>2</sup> )	0.34 , 55.4	EDS
L-test for twinning <sup>2</sup>	$\langle  L  \rangle = 0.50$ , $\langle L^2 \rangle = 0.33$	Xtriage
Estimated twinning fraction	0.012 for $-2/3^*h-1/3^*k-4/3^*l, -1/3^*h-2/3^*k+4/3^*l, -1/3^*h+1/3^*k+1/3^*l$ 0.009 for $-h, 1/3^*h-1/3^*k-4/3^*l, -1/3^*h-2/3^*k+1/3^*l$ 0.009 for $-1/3^*h+1/3^*k+4/3^*l, -k, 2/3^*h+1/3^*k+1/3^*l$ 0.006 for $-h, 2/3^*h+1/3^*k+4/3^*l, 1/3^*h+2/3^*k-1/3^*l$ 0.012 for $-1/3^*h-2/3^*k+4/3^*l, -2/3^*h-1/3^*k-4/3^*l, 1/3^*h-1/3^*k-1/3^*l$ 0.003 for $1/3^*h+2/3^*k-4/3^*l, -k, -2/3^*h-1/3^*k-1/3^*l$ 0.020 for $h, -h, -k, -l$	Xtriage
$F_o, F_c$ correlation	0.93	EDS
Total number of atoms	3436	wwPDB-VP
Average B, all atoms (Å <sup>2</sup> )	66.0	wwPDB-VP

Xtriage's analysis on translational NCS is as follows: *The largest off-origin peak in the Patterson function is 4.39% of the height of the origin peak. No significant pseudotranslation is detected.*

<sup>1</sup>Intensities estimated from amplitudes.

<sup>2</sup>Theoretical values of  $\langle |L| \rangle$ ,  $\langle L^2 \rangle$  for acentric reflections are 0.5, 0.333 respectively for untwinned datasets, and 0.375, 0.2 for perfectly twinned datasets.

## 5 Model quality [i](#)

### 5.1 Standard geometry [i](#)

Bond lengths and bond angles in the following residue types are not validated in this section: FE2, OGA, 3DT

The Z score for a bond length (or angle) is the number of standard deviations the observed value is removed from the expected value. A bond length (or angle) with  $|Z| > 5$  is considered an outlier worth inspection. RMSZ is the root-mean-square of all Z scores of the bond lengths (or angles).

Mol	Chain	Bond lengths		Bond angles	
		RMSZ	# Z  >5	RMSZ	# Z  >5
1	A	0.66	7/3489 (0.2%)	1.10	27/4729 (0.6%)

The worst 5 of 7 bond length outliers are listed below:

Mol	Chain	Res	Type	Atoms	Z	Observed(Å)	Ideal(Å)
1	A	429	GLU	C-O	-13.41	1.07	1.24
1	A	430	GLN	C-O	-10.07	1.10	1.24
1	A	429	GLU	CA-C	-9.89	1.39	1.52
1	A	428	VAL	CA-CB	-9.61	1.28	1.54
1	A	428	VAL	CB-CG2	-7.17	1.28	1.52

The worst 5 of 27 bond angle outliers are listed below:

Mol	Chain	Res	Type	Atoms	Z	Observed(°)	Ideal(°)
1	A	27	ARG	N-CA-C	-16.95	85.22	110.14
1	A	433	GLU	N-CA-C	-12.17	98.46	113.18
1	A	327	SER	N-CA-C	-10.47	95.74	110.50
1	A	430	GLN	N-CA-C	-9.52	101.09	112.89
1	A	116	VAL	N-CA-C	-7.79	92.06	108.88

There are no chirality outliers.

There are no planarity outliers.

### 5.2 Too-close contacts [i](#)

In the following table, the Non-H and H(model) columns list the number of non-hydrogen atoms and hydrogen atoms in the chain respectively. The H(added) column lists the number of hydrogen atoms added and optimized by MolProbity. The Clashes column lists the number of clashes within the asymmetric unit, whereas Symm-Clashes lists symmetry-related clashes.

Mol	Chain	Non-H	H(model)	H(added)	Clashes	Symm-Clashes
1	A	3407	0	3294	210	0
2	A	18	0	16	6	0
3	A	10	0	3	0	0
4	A	1	0	0	0	0
All	All	3436	0	3313	210	0

The all-atom clashscore is defined as the number of clashes found per 1000 atoms (including hydrogen atoms). The all-atom clashscore for this structure is 31.

The worst 5 of 210 close contacts within the same asymmetric unit are listed below, sorted by their clash magnitude.

Atom-1	Atom-2	Interatomic distance (Å)	Clash overlap (Å)
1:A:428:VAL:HG12	1:A:429:GLU:N	1.54	1.10
1:A:428:VAL:HG12	1:A:429:GLU:H	0.93	1.07
1:A:428:VAL:CG1	1:A:429:GLU:H	1.79	0.94
1:A:208:ASP:CG	1:A:210:GLN:H	1.78	0.92
1:A:428:VAL:CG1	1:A:429:GLU:N	2.29	0.92

There are no symmetry-related clashes.

## 5.3 Torsion angles [i](#)

### 5.3.1 Protein backbone [i](#)

In the following table, the Percentiles column shows the percent Ramachandran outliers of the chain as a percentile score with respect to all X-ray entries followed by that with respect to entries of similar resolution.

The Analysed column shows the number of residues for which the backbone conformation was analysed, and the total number of residues.

Mol	Chain	Analysed	Favoured	Allowed	Outliers	Percentiles
1	A	408/495 (82%)	362 (89%)	38 (9%)	8 (2%)	<b>6</b> <b>10</b>

5 of 8 Ramachandran outliers are listed below:

Mol	Chain	Res	Type
1	A	490	THR
1	A	431	ARG
1	A	119	PRO
1	A	208	ASP

*Continued on next page...*

*Continued from previous page...*

Mol	Chain	Res	Type
1	A	209	PRO

### 5.3.2 Protein sidechains [i](#)

In the following table, the Percentiles column shows the percent sidechain outliers of the chain as a percentile score with respect to all X-ray entries followed by that with respect to entries of similar resolution.

The Analysed column shows the number of residues for which the sidechain conformation was analysed, and the total number of residues.

Mol	Chain	Analysed	Rotameric	Outliers	Percentiles
1	A	369/436 (85%)	339 (92%)	30 (8%)	<b>11</b> <b>23</b>

5 of 30 residues with a non-rotameric sidechain are listed below:

Mol	Chain	Res	Type
1	A	296	PHE
1	A	457	GLN
1	A	345	VAL
1	A	497	ARG
1	A	420	GLU

Sometimes sidechains can be flipped to improve hydrogen bonding and reduce clashes. 5 of 18 such sidechains are listed below:

Mol	Chain	Res	Type
1	A	415	ASN
1	A	468	GLN
1	A	446	GLN
1	A	336	GLN
1	A	398	GLN

### 5.3.3 RNA [i](#)

There are no RNA molecules in this entry.

## 5.4 Non-standard residues in protein, DNA, RNA chains [i](#)

There are no non-standard protein/DNA/RNA residues in this entry.

## 5.5 Carbohydrates [i](#)

There are no oligosaccharides in this entry.

## 5.6 Ligand geometry [i](#)

Of 3 ligands modelled in this entry, 1 is monoatomic - leaving 2 for Mogul analysis.

In the following table, the Counts columns list the number of bonds (or angles) for which Mogul statistics could be retrieved, the number of bonds (or angles) that are observed in the model and the number of bonds (or angles) that are defined in the Chemical Component Dictionary. The Link column lists molecule types, if any, to which the group is linked. The Z score for a bond length (or angle) is the number of standard deviations the observed value is removed from the expected value. A bond length (or angle) with  $|Z| > 2$  is considered an outlier worth inspection. RMSZ is the root-mean-square of all Z scores of the bond lengths (or angles).

Mol	Type	Chain	Res	Link	Bond lengths			Bond angles		
					Counts	RMSZ	# Z  > 2	Counts	RMSZ	# Z  > 2
2	3DT	A	506	-	19,19,19	1.05	2 (10%)	27,28,28	1.58	6 (22%)
3	OGA	A	1550	4	9,9,9	1.14	1 (11%)	8,11,11	1.43	1 (12%)

In the following table, the Chirals column lists the number of chiral outliers, the number of chiral centers analysed, the number of these observed in the model and the number defined in the Chemical Component Dictionary. Similar counts are reported in the Torsion and Rings columns. '-' means no outliers of that kind were identified.

Mol	Type	Chain	Res	Link	Chirals	Torsions	Rings
2	3DT	A	506	-	-	0/6/18/18	0/2/2/2
3	OGA	A	1550	4	-	2/8/9/9	-

All (3) bond length outliers are listed below:

Mol	Chain	Res	Type	Atoms	Z	Observed(Å)	Ideal(Å)
2	A	506	3DT	C6-C5	3.00	1.39	1.34
3	A	1550	OGA	C2-C1	-2.46	1.51	1.54
2	A	506	3DT	C4-C5	-2.12	1.39	1.44

The worst 5 of 7 bond angle outliers are listed below:

Mol	Chain	Res	Type	Atoms	Z	Observed(°)	Ideal(°)
2	A	506	3DT	C4-N3-C2	-3.49	119.98	125.66
2	A	506	3DT	C5-C6-N1	-2.85	120.22	123.31
2	A	506	3DT	C7-C5-C6	-2.39	119.61	122.85

*Continued on next page...*

*Continued from previous page...*

Mol	Chain	Res	Type	Atoms	Z	Observed(°)	Ideal(°)
2	A	506	3DT	C3'-C2'-C1'	-2.36	96.83	102.60
2	A	506	3DT	C5'-C4-N3	2.32	120.17	116.08

There are no chirality outliers.

All (2) torsion outliers are listed below:

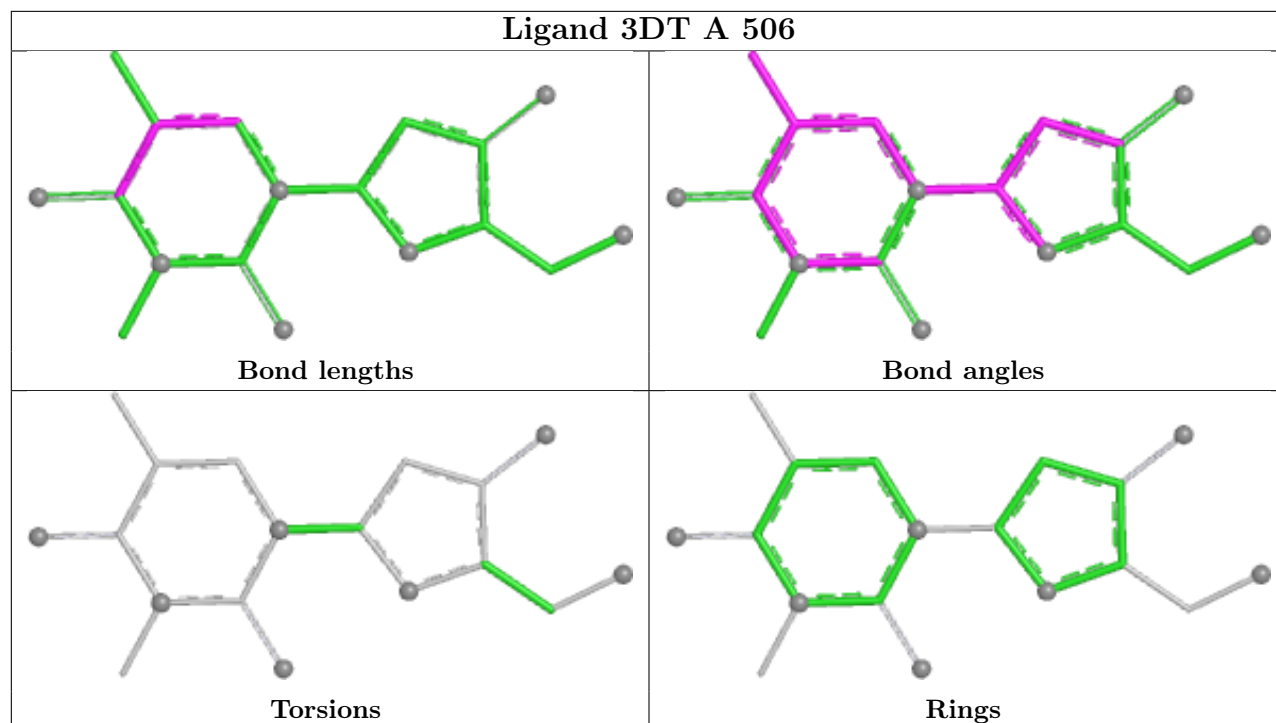
Mol	Chain	Res	Type	Atoms
3	A	1550	OGA	C1-C2-N1-C4
3	A	1550	OGA	O2'-C2-N1-C4

There are no ring outliers.

1 monomer is involved in 6 short contacts:

Mol	Chain	Res	Type	Clashes	Symm-Clashes
2	A	506	3DT	6	0

The following is a two-dimensional graphical depiction of Mogul quality analysis of bond lengths, bond angles, torsion angles, and ring geometry for all instances of the Ligand of Interest. In addition, ligands with molecular weight > 250 and outliers as shown on the validation Tables will also be included. For torsion angles, if less than 5% of the Mogul distribution of torsion angles is within 10 degrees of the torsion angle in question, then that torsion angle is considered an outlier. Any bond that is central to one or more torsion angles identified as an outlier by Mogul will be highlighted in the graph. For rings, the root-mean-square deviation (RMSD) between the ring in question and similar rings identified by Mogul is calculated over all ring torsion angles. If the average RMSD is greater than 60 degrees and the minimal RMSD between the ring in question and any Mogul-identified rings is also greater than 60 degrees, then that ring is considered an outlier. The outliers are highlighted in purple. The color gray indicates Mogul did not find sufficient equivalents in the CSD to analyse the geometry.



## 5.7 Other polymers [i](#)

There are no such residues in this entry.

## 5.8 Polymer linkage issues [i](#)

There are no chain breaks in this entry.

## 6 Fit of model and data [i](#)

### 6.1 Protein, DNA and RNA chains [i](#)

In the following table, the column labelled ‘#RSRZ > 2’ contains the number (and percentage) of RSRZ outliers, followed by percent RSRZ outliers for the chain as percentile scores relative to all X-ray entries and entries of similar resolution. The OWAB column contains the minimum, median, 95<sup>th</sup> percentile and maximum values of the occupancy-weighted average B-factor per residue. The column labelled ‘Q < 0.9’ lists the number of (and percentage) of residues with an average occupancy less than 0.9.

Mol	Chain	Analysed	<RSRZ>	#RSRZ>2	OWAB(Å <sup>2</sup> )	Q<0.9
1	A	420/495 (84%)	0.73	45 (10%) <b>11</b> <b>9</b>	37, 63, 101, 106	0

The worst 5 of 45 RSRZ outliers are listed below:

Mol	Chain	Res	Type	RSRZ
1	A	159	ALA	5.7
1	A	431	ARG	5.4
1	A	158	ALA	4.8
1	A	465	PRO	4.8
1	A	213	PRO	4.7

### 6.2 Non-standard residues in protein, DNA, RNA chains [i](#)

There are no non-standard protein/DNA/RNA residues in this entry.

### 6.3 Carbohydrates [i](#)

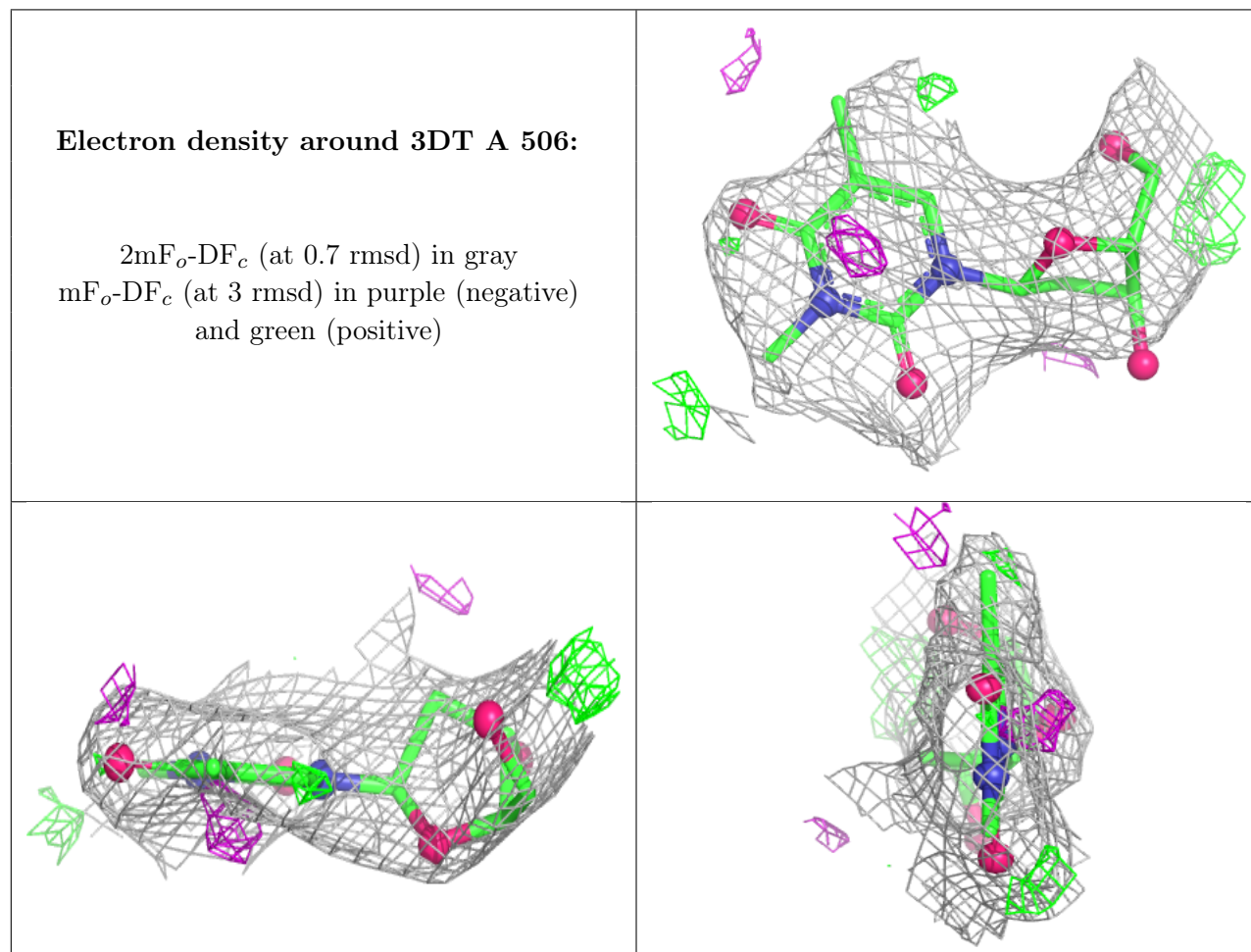
There are no oligosaccharides in this entry.

### 6.4 Ligands [i](#)

In the following table, the Atoms column lists the number of modelled atoms in the group and the number defined in the chemical component dictionary. The B-factors column lists the minimum, median, 95<sup>th</sup> percentile and maximum values of B factors of atoms in the group. The column labelled ‘Q < 0.9’ lists the number of atoms with occupancy less than 0.9.

Mol	Type	Chain	Res	Atoms	RSCC	RSR	B-factors(Å <sup>2</sup> )	Q<0.9
2	3DT	A	506	18/18	0.74	0.20	98,101,105,106	0
3	OGA	A	1550	10/10	0.91	0.14	76,84,91,92	0
4	FE2	A	507	1/1	0.98	0.06	89,89,89,89	0

The following is a graphical depiction of the model fit to experimental electron density of all instances of the Ligand of Interest. In addition, ligands with molecular weight > 250 and outliers as shown on the geometry validation Tables will also be included. Each fit is shown from different orientation to approximate a three-dimensional view.



## 6.5 Other polymers [\(i\)](#)

There are no such residues in this entry.