



# wwPDB X-ray Structure Validation Summary Report ⓘ

Mar 8, 2026 – 01:56 PM UTC

PDB ID : 7LFM / pdb\_00007lfm  
Title : MODEL OF MHC CLASS Ib H2-M3 WITH MOUSE ND1 N-TERMINAL HEPTAPEPTIDE, VAL MUTANT, TRICLINIC CELL, REFINED AT 1.60 ANGSTROMS RESOLUTION  
Authors : Tomchick, D.R.; Deisenhofer, J.; Shen, S.  
Deposited on : 2021-01-17  
Resolution : 1.60 Å(reported)

This is a wwPDB X-ray Structure Validation Summary Report for a publicly released PDB entry.

We welcome your comments at [validation@mail.wwpdb.org](mailto:validation@mail.wwpdb.org)

A user guide is available at

<https://www.wwpdb.org/validation/2017/XrayValidationReportHelp>

with specific help available everywhere you see the ⓘ symbol.

The types of validation reports are described at

<http://www.wwpdb.org/validation/2017/FAQs#types>.

---

The following versions of software and data (see [references ⓘ](#)) were used in the production of this report:

MolProbity : 4-5-2 with Phenix2.0  
Mogul : 2022.3.0, CSD as543be (2022)  
Xtrriage (Phenix) : 2.0  
EDS : 3.0  
Buster-report : wwPDB partial adaption of 1.1.7 (2018)  
Percentile statistics : 20250101.v01 (using entries in the PDB archive January 1st 2025)  
CCP4 : 9.0.010 (Gargrove)  
Density-Fitness : 1.0.12  
Ideal geometry (proteins) : Engh & Huber (2001)  
Ideal geometry (DNA, RNA) : Parkinson et al. (1996)  
Validation Pipeline (wwPDB-VP) : 2.49

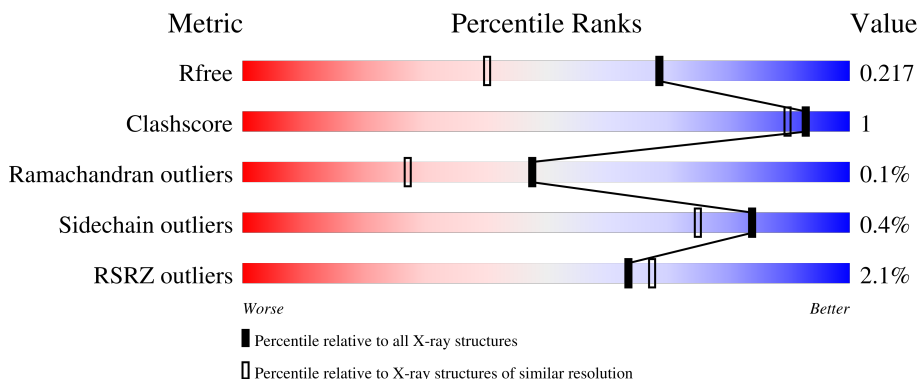
# 1 Overall quality at a glance

The following experimental techniques were used to determine the structure:

*X-RAY DIFFRACTION*

The reported resolution of this entry is 1.60 Å.

Percentile scores (ranging between 0-100) for global validation metrics of the entry are shown in the following graphic. The table shows the number of entries on which the scores are based.





Metric	Whole archive (#Entries)	Similar resolution (#Entries, resolution range(Å))
$R_{free}$	180053	4673 (1.60-1.60)
Clashscore	190562	4931 (1.60-1.60)
Ramachandran outliers	187476	4831 (1.60-1.60)
Sidechain outliers	187428	4830 (1.60-1.60)
RSRZ outliers	180081	4672 (1.60-1.60)

The table below summarises the geometric issues observed across the polymeric chains and their fit to the electron density. The red, orange, yellow and green segments of the lower bar indicate the fraction of residues that contain outliers for  $\geq 3$ , 2, 1 and 0 types of geometric quality criteria respectively. A grey segment represents the fraction of residues that are not modelled. The numeric value for each fraction is indicated below the corresponding segment, with a dot representing fractions  $\leq 5\%$ . The upper red bar (where present) indicates the fraction of residues that have poor fit to the electron density. The numeric value is given above the bar.

Mol	Chain	Length	Quality of chain
1	A	282	 94%
1	D	282	 90% 6%
2	B	99	 97%
2	E	99	 98%

*Continued on next page...*

*Continued from previous page...*

Mol	Chain	Length	Quality of chain
3	C	7	 100%
3	F	7	 100%

## 2 Entry composition [i](#)

There are 6 unique types of molecules in this entry. The entry contains 12774 atoms, of which 6031 are hydrogens and 0 are deuteriums.

In the tables below, the ZeroOcc column contains the number of atoms modelled with zero occupancy, the AltConf column contains the number of residues with at least one atom in alternate conformation and the Trace column contains the number of residues modelled with at most 2 atoms.

- Molecule 1 is a protein called Histocompatibility 2, M region locus 3.

Mol	Chain	Residues	Atoms					ZeroOcc	AltConf	Trace	
			Total	C	H	N	O				S
1	A	276	4439	1425	2179	398	426	11	0	4	0
1	D	271	4314	1389	2112	388	414	11	0	0	0

There are 14 discrepancies between the modelled and reference sequences:

Chain	Residue	Modelled	Actual	Comment	Reference
A	?	-	GLY	deletion	UNP Q31093
A	277	HIS	-	expression tag	UNP Q31093
A	278	HIS	-	expression tag	UNP Q31093
A	279	HIS	-	expression tag	UNP Q31093
A	280	HIS	-	expression tag	UNP Q31093
A	281	HIS	-	expression tag	UNP Q31093
A	282	HIS	-	expression tag	UNP Q31093
D	?	-	GLY	deletion	UNP Q31093
D	277	HIS	-	expression tag	UNP Q31093
D	278	HIS	-	expression tag	UNP Q31093
D	279	HIS	-	expression tag	UNP Q31093
D	280	HIS	-	expression tag	UNP Q31093
D	281	HIS	-	expression tag	UNP Q31093
D	282	HIS	-	expression tag	UNP Q31093

- Molecule 2 is a protein called Beta-2-microglobulin.

Mol	Chain	Residues	Atoms					ZeroOcc	AltConf	Trace	
			Total	C	H	N	O				S
2	B	99	1626	526	802	138	153	7	0	1	0
2	E	99	1616	524	795	138	152	7	0	0	0

There are 2 discrepancies between the modelled and reference sequences:

Chain	Residue	Modelled	Actual	Comment	Reference
B	85	ASP	ALA	variant	UNP P01887
E	85	ASP	ALA	variant	UNP P01887

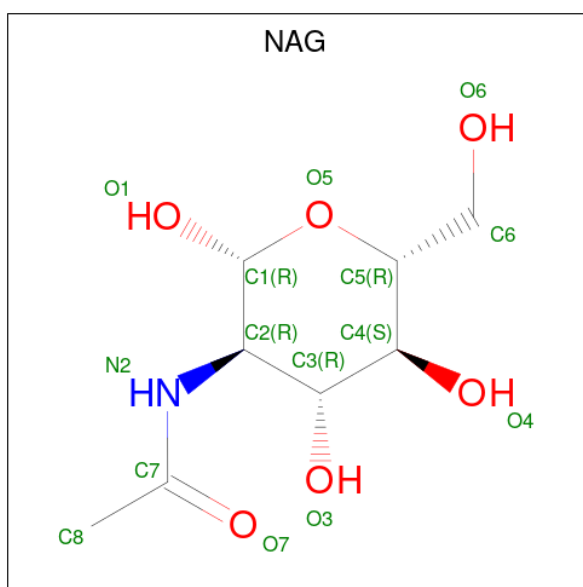
- Molecule 3 is a protein called Heptapeptide from NADH-ubiquinone oxidoreductase chain 1.

Mol	Chain	Residues	Atoms					ZeroOcc	AltConf	Trace	
3	C	7	Total	C	H	N	O	S	0	0	0
			129	45	65	8	10	1			
3	F	7	Total	C	H	N	O	S	0	0	0
			129	45	65	8	10	1			

There are 2 discrepancies between the modelled and reference sequences:

Chain	Residue	Modelled	Actual	Comment	Reference
C	6	VAL	ILE	engineered mutation	UNP P03888
F	6	VAL	ILE	engineered mutation	UNP P03888

- Molecule 4 is 2-acetamido-2-deoxy-beta-D-glucopyranose (CCD ID: NAG) (formula:  $C_8H_{15}NO_6$ ) (labeled as "Ligand of Interest" by depositor).



Mol	Chain	Residues	Atoms					ZeroOcc	AltConf
4	A	1	Total	C	H	N	O	0	0
			27	8	13	1	5		

- Molecule 5 is SODIUM ION (CCD ID: NA) (formula: Na).

Mol	Chain	Residues	Atoms	ZeroOcc	AltConf
5	A	1	Total Na 1 1	0	0

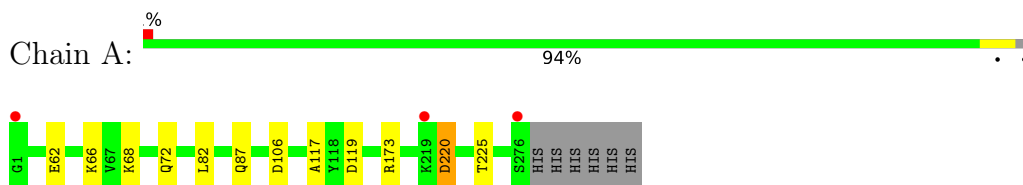
- Molecule 6 is water.

Mol	Chain	Residues	Atoms	ZeroOcc	AltConf
6	A	191	Total O 191 191	0	0
6	B	83	Total O 83 83	0	0
6	C	3	Total O 3 3	0	0
6	D	143	Total O 143 143	0	0
6	E	67	Total O 67 67	0	0
6	F	6	Total O 6 6	0	0

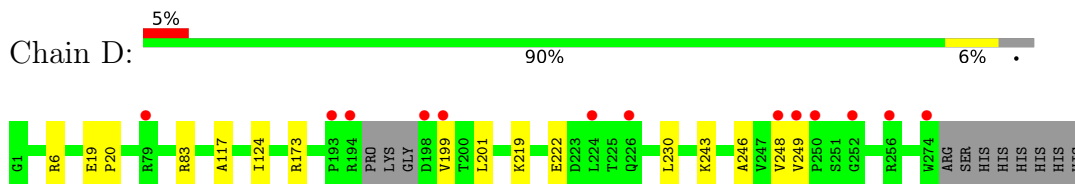
### 3 Residue-property plots [i](#)

These plots are drawn for all protein, RNA, DNA and oligosaccharide chains in the entry. The first graphic for a chain summarises the proportions of the various outlier classes displayed in the second graphic. The second graphic shows the sequence view annotated by issues in geometry and electron density. Residues are color-coded according to the number of geometric quality criteria for which they contain at least one outlier: green = 0, yellow = 1, orange = 2 and red = 3 or more. A red dot above a residue indicates a poor fit to the electron density ( $RSRZ > 2$ ). Stretches of 2 or more consecutive residues without any outlier are shown as a green connector. Residues present in the sample, but not in the model, are shown in grey.

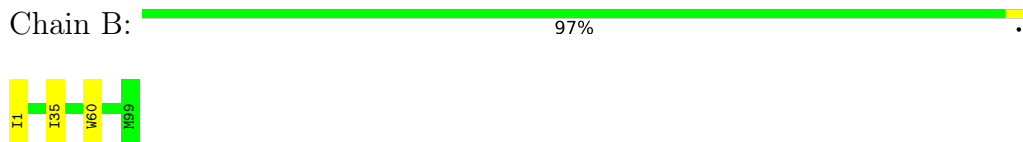
- Molecule 1: Histocompatibility 2, M region locus 3



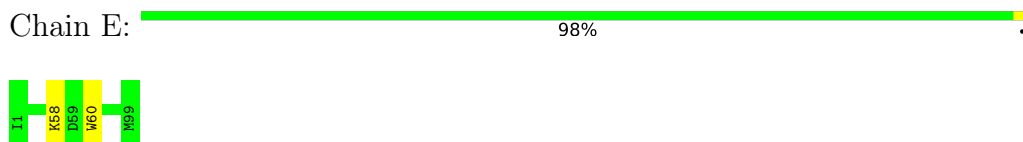
- Molecule 1: Histocompatibility 2, M region locus 3



- Molecule 2: Beta-2-microglobulin



- Molecule 2: Beta-2-microglobulin



- Molecule 3: Heptapeptide from NADH-ubiquinone oxidoreductase chain 1



There are no outlier residues recorded for this chain.

- Molecule 3: Heptapeptide from NADH-ubiquinone oxidoreductase chain 1



There are no outlier residues recorded for this chain.

## 4 Data and refinement statistics i

Property	Value	Source
Space group	P 1	Depositor
Cell constants a, b, c, $\alpha$ , $\beta$ , $\gamma$	63.74Å 65.02Å 54.58Å 98.55° 98.22° 112.36°	Depositor
Resolution (Å)	19.09 – 1.60 19.09 – 1.60	Depositor EDS
% Data completeness (in resolution range)	84.9 (19.09-1.60) 84.8 (19.09-1.60)	Depositor EDS
$R_{merge}$	0.06	Depositor
$R_{sym}$	(Not available)	Depositor
$\langle I/\sigma(I) \rangle$ <sup>1</sup>	1.35 (at 1.60Å)	Xtrriage
Refinement program	PHENIX 1.19.2-3874	Depositor
R, $R_{free}$	0.184 , 0.217 0.184 , 0.217	Depositor DCC
$R_{free}$ test set	1706 reflections (1.65%)	wwPDB-VP
Wilson B-factor (Å <sup>2</sup> )	20.0	Xtrriage
Anisotropy	0.188	Xtrriage
Bulk solvent $k_{sol}$ (e/Å <sup>3</sup> ), $B_{sol}$ (Å <sup>2</sup> )	0.42 , 46.3	EDS
L-test for twinning <sup>2</sup>	$\langle  L  \rangle = 0.47$ , $\langle L^2 \rangle = 0.30$	Xtrriage
Estimated twinning fraction	0.022 for -k,-h,-l	Xtrriage
$F_o, F_c$ correlation	0.96	EDS
Total number of atoms	12774	wwPDB-VP
Average B, all atoms (Å <sup>2</sup> )	34.0	wwPDB-VP

Xtrriage's analysis on translational NCS is as follows: *The largest off-origin peak in the Patterson function is 5.79% of the height of the origin peak. No significant pseudotranslation is detected.*

<sup>1</sup>Intensities estimated from amplitudes.

<sup>2</sup>Theoretical values of  $\langle |L| \rangle$ ,  $\langle L^2 \rangle$  for acentric reflections are 0.5, 0.333 respectively for untwinned datasets, and 0.375, 0.2 for perfectly twinned datasets.

## 5 Model quality [i](#)

### 5.1 Standard geometry [i](#)

Bond lengths and bond angles in the following residue types are not validated in this section: FME, NAG, NA

The Z score for a bond length (or angle) is the number of standard deviations the observed value is removed from the expected value. A bond length (or angle) with  $|Z| > 5$  is considered an outlier worth inspection. RMSZ is the root-mean-square of all Z scores of the bond lengths (or angles).

Mol	Chain	Bond lengths		Bond angles	
		RMSZ	# Z  >5	RMSZ	# Z  >5
1	A	0.49	0/2332	0.66	0/3164
1	D	0.47	0/2260	0.64	0/3066
2	B	0.57	0/853	0.68	0/1156
2	E	0.44	0/847	0.61	0/1148
3	C	0.39	0/55	0.54	0/72
3	F	0.49	0/55	0.45	0/72
All	All	0.49	0/6402	0.65	0/8678

There are no bond length outliers.

There are no bond angle outliers.

There are no chirality outliers.

There are no planarity outliers.

### 5.2 Too-close contacts [i](#)

In the following table, the Non-H and H(model) columns list the number of non-hydrogen atoms and hydrogen atoms in the chain respectively. The H(added) column lists the number of hydrogen atoms added and optimized by MolProbity. The Clashes column lists the number of clashes within the asymmetric unit, whereas Symm-Clashes lists symmetry-related clashes.

Mol	Chain	Non-H	H(model)	H(added)	Clashes	Symm-Clashes
1	A	2260	2179	2178	8	0
1	D	2202	2112	2112	10	0
2	B	824	802	801	2	0
2	E	821	795	796	2	0
3	C	64	65	65	0	0
3	F	64	65	65	0	0
4	A	14	13	13	0	0

*Continued on next page...*

Continued from previous page...

Mol	Chain	Non-H	H(model)	H(added)	Clashes	Symm-Clashes
5	A	1	0	0	0	0
6	A	191	0	0	1	0
6	B	83	0	0	0	0
6	C	3	0	0	0	0
6	D	143	0	0	2	0
6	E	67	0	0	1	0
6	F	6	0	0	0	0
All	All	6743	6031	6030	18	0

The all-atom clashscore is defined as the number of clashes found per 1000 atoms (including hydrogen atoms). The all-atom clashscore for this structure is 1.

The worst 5 of 18 close contacts within the same asymmetric unit are listed below, sorted by their clash magnitude.

Atom-1	Atom-2	Interatomic distance (Å)	Clash overlap (Å)
2:E:58:LYS:HG3	6:E:133:HOH:O	2.02	0.59
1:A:117:ALA:HB2	2:B:60:TRP:CE2	2.41	0.55
1:D:117:ALA:HB2	2:E:60:TRP:CE2	2.47	0.50
1:D:219:LYS:O	1:D:222:GLU:HG2	2.13	0.49
1:A:68:LYS:HE3	1:A:72:GLN:OE1	2.13	0.48

There are no symmetry-related clashes.

## 5.3 Torsion angles [i](#)

### 5.3.1 Protein backbone [i](#)

In the following table, the Percentiles column shows the percent Ramachandran outliers of the chain as a percentile score with respect to all X-ray entries followed by that with respect to entries of similar resolution.

The Analysed column shows the number of residues for which the backbone conformation was analysed, and the total number of residues.

Mol	Chain	Analysed	Favoured	Allowed	Outliers	Percentiles	
1	A	278/282 (99%)	270 (97%)	7 (2%)	1 (0%)	30	14
1	D	267/282 (95%)	261 (98%)	6 (2%)	0	100	100
2	B	98/99 (99%)	98 (100%)	0	0	100	100
2	E	97/99 (98%)	97 (100%)	0	0	100	100

Continued on next page...

Continued from previous page...

Mol	Chain	Analysed	Favoured	Allowed	Outliers	Percentiles	
3	C	5/7 (71%)	5 (100%)	0	0	100	100
3	F	5/7 (71%)	5 (100%)	0	0	100	100
All	All	750/776 (97%)	736 (98%)	13 (2%)	1 (0%)	48	27

All (1) Ramachandran outliers are listed below:

Mol	Chain	Res	Type
1	A	220	ASP

### 5.3.2 Protein sidechains [i](#)

In the following table, the Percentiles column shows the percent sidechain outliers of the chain as a percentile score with respect to all X-ray entries followed by that with respect to entries of similar resolution.

The Analysed column shows the number of residues for which the sidechain conformation was analysed, and the total number of residues.

Mol	Chain	Analysed	Rotameric	Outliers	Percentiles	
1	A	242/244 (99%)	241 (100%)	1 (0%)	84	75
1	D	234/244 (96%)	233 (100%)	1 (0%)	84	75
2	B	95/94 (101%)	94 (99%)	1 (1%)	65	46
2	E	94/94 (100%)	94 (100%)	0	100	100
3	C	6/6 (100%)	6 (100%)	0	100	100
3	F	6/6 (100%)	6 (100%)	0	100	100
All	All	677/688 (98%)	674 (100%)	3 (0%)	84	75

All (3) residues with a non-rotameric sidechain are listed below:

Mol	Chain	Res	Type
1	A	220	ASP
2	B	35	ILE
1	D	124	ILE

Sometimes sidechains can be flipped to improve hydrogen bonding and reduce clashes. All (4) such sidechains are listed below:

Mol	Chain	Res	Type
1	A	115	GLN

Continued on next page...

*Continued from previous page...*

Mol	Chain	Res	Type
2	B	29	GLN
1	D	87	GLN
1	D	113	HIS

### 5.3.3 RNA [i](#)

There are no RNA molecules in this entry.

## 5.4 Non-standard residues in protein, DNA, RNA chains [i](#)

2 non-standard protein/DNA/RNA residues are modelled in this entry.

In the following table, the Counts columns list the number of bonds (or angles) for which Mogul statistics could be retrieved, the number of bonds (or angles) that are observed in the model and the number of bonds (or angles) that are defined in the Chemical Component Dictionary. The Link column lists molecule types, if any, to which the group is linked. The Z score for a bond length (or angle) is the number of standard deviations the observed value is removed from the expected value. A bond length (or angle) with  $|Z| > 2$  is considered an outlier worth inspection. RMSZ is the root-mean-square of all Z scores of the bond lengths (or angles).

Mol	Type	Chain	Res	Link	Bond lengths			Bond angles		
					Counts	RMSZ	# Z  > 2	Counts	RMSZ	# Z  > 2
3	FME	C	1	3	8,9,10	0.66	0	8,9,11	1.09	0
3	FME	F	1	3	8,9,10	0.86	0	8,9,11	0.81	0

In the following table, the Chirals column lists the number of chiral outliers, the number of chiral centers analysed, the number of these observed in the model and the number defined in the Chemical Component Dictionary. Similar counts are reported in the Torsion and Rings columns. '-' means no outliers of that kind were identified.

Mol	Type	Chain	Res	Link	Chirals	Torsions	Rings
3	FME	C	1	3	-	1/7/9/11	-
3	FME	F	1	3	-	1/7/9/11	-

There are no bond length outliers.

There are no bond angle outliers.

There are no chirality outliers.

All (2) torsion outliers are listed below:

Mol	Chain	Res	Type	Atoms
3	C	1	FME	CB-CA-N-CN
3	F	1	FME	CB-CA-N-CN

There are no ring outliers.

No monomer is involved in short contacts.

## 5.5 Carbohydrates [i](#)

There are no oligosaccharides in this entry.

## 5.6 Ligand geometry [i](#)

Of 2 ligands modelled in this entry, 1 is monoatomic - leaving 1 for Mogul analysis.

In the following table, the Counts columns list the number of bonds (or angles) for which Mogul statistics could be retrieved, the number of bonds (or angles) that are observed in the model and the number of bonds (or angles) that are defined in the Chemical Component Dictionary. The Link column lists molecule types, if any, to which the group is linked. The Z score for a bond length (or angle) is the number of standard deviations the observed value is removed from the expected value. A bond length (or angle) with  $|Z| > 2$  is considered an outlier worth inspection. RMSZ is the root-mean-square of all Z scores of the bond lengths (or angles).

Mol	Type	Chain	Res	Link	Bond lengths			Bond angles		
					Counts	RMSZ	# $ Z  > 2$	Counts	RMSZ	# $ Z  > 2$
4	NAG	A	2001	1	14,14,15	0.22	0	17,19,21	0.67	0

In the following table, the Chirals column lists the number of chiral outliers, the number of chiral centers analysed, the number of these observed in the model and the number defined in the Chemical Component Dictionary. Similar counts are reported in the Torsion and Rings columns. '-' means no outliers of that kind were identified.

Mol	Type	Chain	Res	Link	Chirals	Torsions	Rings
4	NAG	A	2001	1	-	2/6/23/26	0/1/1/1

There are no bond length outliers.

There are no bond angle outliers.

There are no chirality outliers.

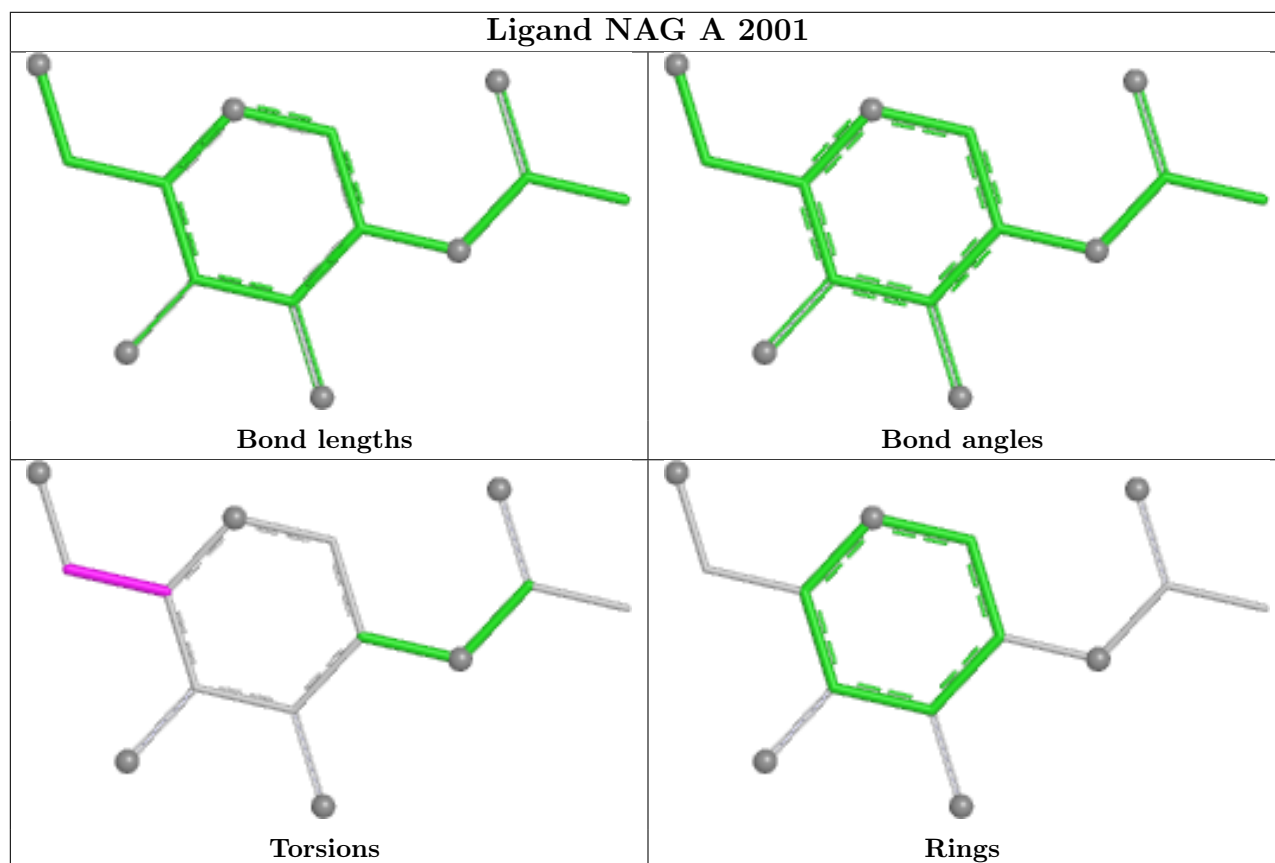
All (2) torsion outliers are listed below:

Mol	Chain	Res	Type	Atoms
4	A	2001	NAG	C4-C5-C6-O6
4	A	2001	NAG	O5-C5-C6-O6

There are no ring outliers.

No monomer is involved in short contacts.

The following is a two-dimensional graphical depiction of Mogul quality analysis of bond lengths, bond angles, torsion angles, and ring geometry for all instances of the Ligand of Interest. In addition, ligands with molecular weight > 250 and outliers as shown on the validation Tables will also be included. For torsion angles, if less than 5% of the Mogul distribution of torsion angles is within 10 degrees of the torsion angle in question, then that torsion angle is considered an outlier. Any bond that is central to one or more torsion angles identified as an outlier by Mogul will be highlighted in the graph. For rings, the root-mean-square deviation (RMSD) between the ring in question and similar rings identified by Mogul is calculated over all ring torsion angles. If the average RMSD is greater than 60 degrees and the minimal RMSD between the ring in question and any Mogul-identified rings is also greater than 60 degrees, then that ring is considered an outlier. The outliers are highlighted in purple. The color gray indicates Mogul did not find sufficient equivalents in the CSD to analyse the geometry.



## 5.7 Other polymers

There are no such residues in this entry.

## 5.8 Polymer linkage issues

There are no chain breaks in this entry.

## 6 Fit of model and data [i](#)

### 6.1 Protein, DNA and RNA chains [i](#)

In the following table, the column labelled ‘#RSRZ> 2’ contains the number (and percentage) of RSRZ outliers, followed by percent RSRZ outliers for the chain as percentile scores relative to all X-ray entries and entries of similar resolution. The OWAB column contains the minimum, median, 95<sup>th</sup> percentile and maximum values of the occupancy-weighted average B-factor per residue. The column labelled ‘Q< 0.9’ lists the number of (and percentage) of residues with an average occupancy less than 0.9.

Mol	Chain	Analysed	<RSRZ>	#RSRZ>2	OWAB(Å <sup>2</sup> )	Q<0.9
1	A	276/282 (97%)	-0.15	3 (1%) 78 82	14, 29, 57, 89	4 (1%)
1	D	271/282 (96%)	0.07	13 (4%) 35 37	18, 31, 86, 114	0
2	B	99/99 (100%)	-0.36	0 100 100	16, 25, 48, 61	1 (1%)
2	E	99/99 (100%)	-0.05	0 100 100	19, 33, 54, 63	0
3	C	6/7 (85%)	0.11	0 100 100	27, 33, 36, 41	0
3	F	6/7 (85%)	-0.03	0 100 100	23, 29, 33, 38	0
All	All	757/776 (97%)	-0.08	16 (2%) 63 67	14, 30, 65, 114	5 (0%)

The worst 5 of 16 RSRZ outliers are listed below:

Mol	Chain	Res	Type	RSRZ
1	D	199	VAL	4.2
1	A	219	LYS	2.7
1	D	224	LEU	2.6
1	D	252	GLY	2.6
1	D	249	VAL	2.5

### 6.2 Non-standard residues in protein, DNA, RNA chains [i](#)

In the following table, the Atoms column lists the number of modelled atoms in the group and the number defined in the chemical component dictionary. The B-factors column lists the minimum, median, 95<sup>th</sup> percentile and maximum values of B factors of atoms in the group. The column labelled ‘Q< 0.9’ lists the number of atoms with occupancy less than 0.9.

Mol	Type	Chain	Res	Atoms	RSCC	RSR	B-factors(Å <sup>2</sup> )	Q<0.9
3	FME	F	1	10/11	0.98	0.06	18,23,29,29	0
3	FME	C	1	10/11	0.99	0.04	16,20,27,27	0

### 6.3 Carbohydrates [i](#)

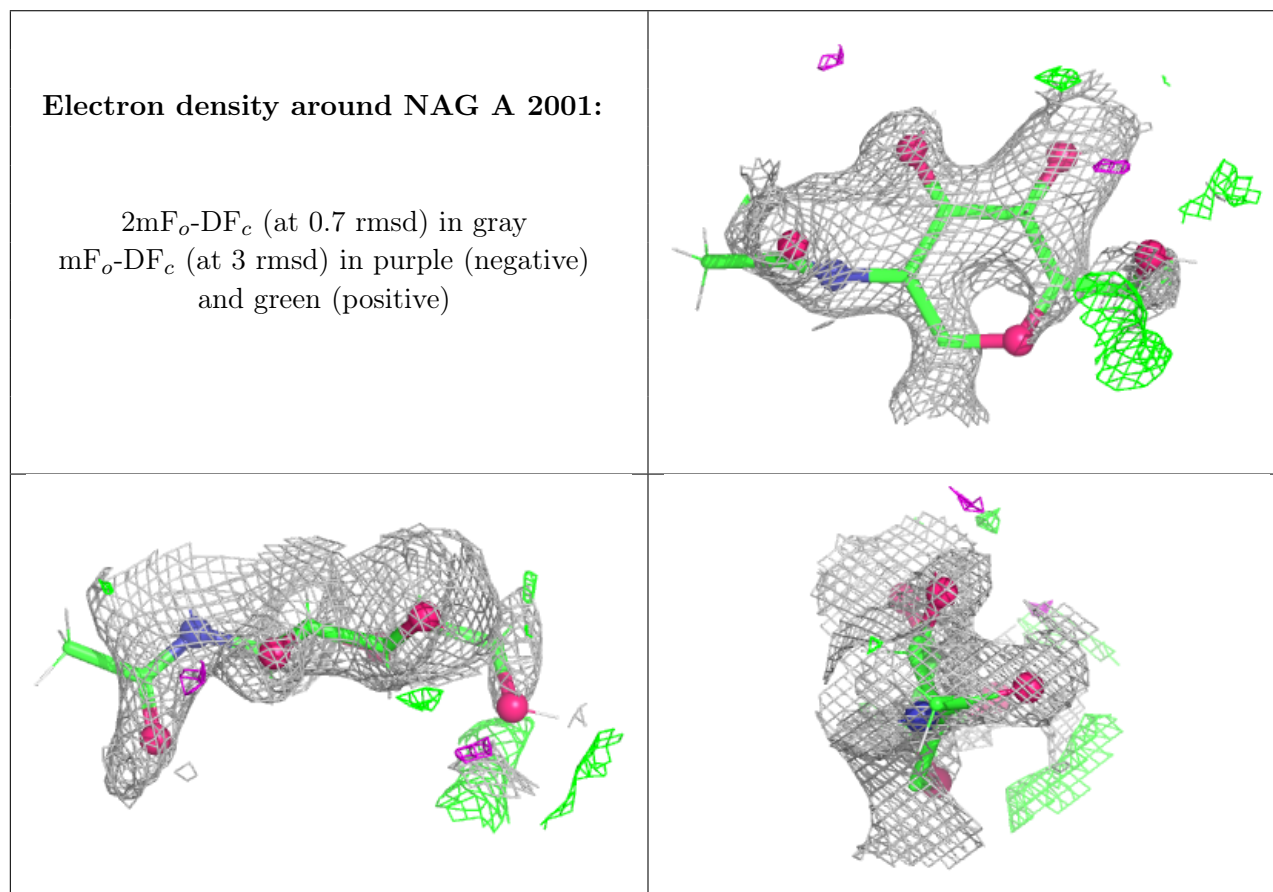
There are no oligosaccharides in this entry.

### 6.4 Ligands [i](#)

In the following table, the Atoms column lists the number of modelled atoms in the group and the number defined in the chemical component dictionary. The B-factors column lists the minimum, median, 95<sup>th</sup> percentile and maximum values of B factors of atoms in the group. The column labelled 'Q< 0.9' lists the number of atoms with occupancy less than 0.9.

Mol	Type	Chain	Res	Atoms	RSCC	RSR	B-factors( $\text{\AA}^2$ )	Q<0.9
4	NAG	A	2001	14/15	0.85	0.13	40,55,69,70	0
5	NA	A	2002	1/1	0.96	0.07	39,39,39,39	0

The following is a graphical depiction of the model fit to experimental electron density of all instances of the Ligand of Interest. In addition, ligands with molecular weight > 250 and outliers as shown on the geometry validation Tables will also be included. Each fit is shown from different orientation to approximate a three-dimensional view.



## 6.5 Other polymers [i](#)

There are no such residues in this entry.