



# wwPDB X-ray Structure Validation Summary Report ⓘ

Mar 5, 2026 – 07:36 PM UTC

PDB ID : 1LS3 / pdb\_00001ls3  
Title : Crystal Structure of the Complex between Rabbit Cytosolic Serine Hydroxy methyltransferase and TriGlu-5-formyl-tetrahydrofolate  
Authors : Fu, T.F.; Scarsdale, J.N.; Kazanina, G.; Schirch, V.; Wright, H.T.  
Deposited on : 2002-05-16  
Resolution : 2.70 Å (reported)

This is a wwPDB X-ray Structure Validation Summary Report for a publicly released PDB entry.

We welcome your comments at [validation@mail.wwpdb.org](mailto:validation@mail.wwpdb.org)

A user guide is available at

<https://www.wwpdb.org/validation/2017/XrayValidationReportHelp>

with specific help available everywhere you see the ⓘ symbol.

The types of validation reports are described at

<http://www.wwpdb.org/validation/2017/FAQs#types>.

---

The following versions of software and data (see [references ⓘ](#)) were used in the production of this report:

MolProbity : 4-5-2 with Phenix2.0  
Mogul : 2022.3.0, CSD as543be (2022)  
Xtrriage (Phenix) : 2.0  
EDS : 3.0  
Buster-report : wwPDB partial adaption of 1.1.7 (2018)  
Percentile statistics : 20250101.v01 (using entries in the PDB archive January 1st 2025)  
CCP4 : 9.0.010 (Gargrove)  
Density-Fitness : 1.0.12  
Ideal geometry (proteins) : Engh & Huber (2001)  
Ideal geometry (DNA, RNA) : Parkinson et al. (1996)  
Validation Pipeline (wwPDB-VP) : 2.49

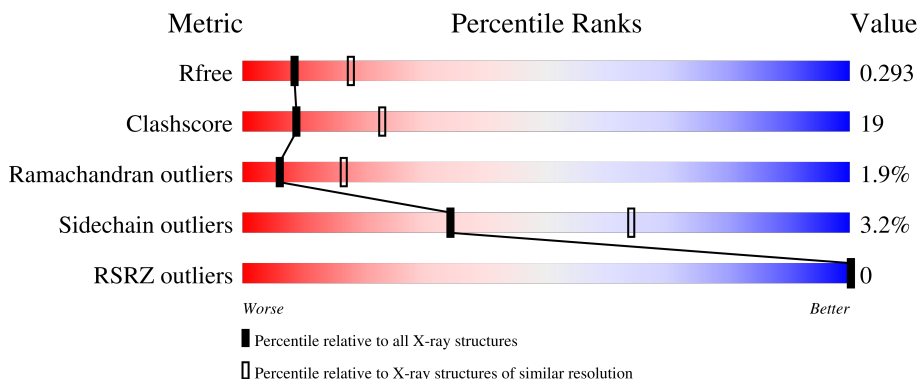
# 1 Overall quality at a glance

The following experimental techniques were used to determine the structure:

*X-RAY DIFFRACTION*

The reported resolution of this entry is 2.70 Å.

Percentile scores (ranging between 0-100) for global validation metrics of the entry are shown in the following graphic. The table shows the number of entries on which the scores are based.



Metric	Whole archive (#Entries)	Similar resolution (#Entries, resolution range(Å))
$R_{free}$	180053	3538 (2.70-2.70)
Clashscore	190562	3843 (2.70-2.70)
Ramachandran outliers	187476	3778 (2.70-2.70)
Sidechain outliers	187428	3778 (2.70-2.70)
RSRZ outliers	180081	3538 (2.70-2.70)

The table below summarises the geometric issues observed across the polymeric chains and their fit to the electron density. The red, orange, yellow and green segments of the lower bar indicate the fraction of residues that contain outliers for  $\geq 3$ , 2, 1 and 0 types of geometric quality criteria respectively. A grey segment represents the fraction of residues that are not modelled. The numeric value for each fraction is indicated below the corresponding segment, with a dot representing fractions  $\leq 5\%$ . The upper red bar (where present) indicates the fraction of residues that have poor fit to the electron density. The numeric value is given above the bar.

Mol	Chain	Length	Quality of chain
1	A	483	 62% 31% . .
1	B	483	 59% 31% . 6%
1	C	483	 63% 30% . .
1	D	483	 59% 30% 5% 6%

The following table lists non-polymeric compounds, carbohydrate monomers and non-standard

residues in protein, DNA, RNA chains that are outliers for geometric or electron-density-fit criteria:

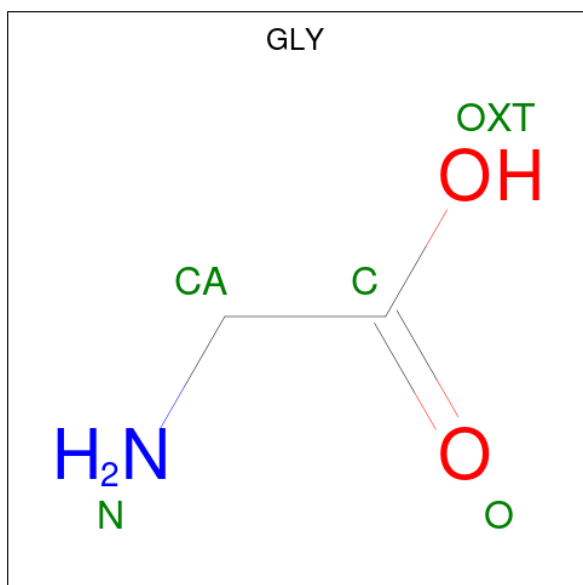
Mol	Type	Chain	Res	Chirality	Geometry	Clashes	Electron density
2	PLP	B	419(A)	-	X	-	-



Continued from previous page...

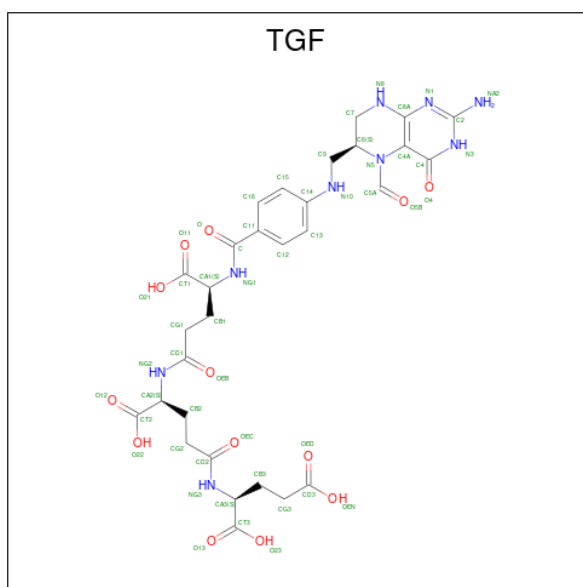
Mol	Chain	Residues	Atoms					ZeroOcc	AltConf
2	C	1	Total	C	N	O	P	0	0
			15	8	1	5	1		
2	D	1	Total	C	N	O	P	0	0
			15	8	1	5	1		

- Molecule 3 is GLYCINE (CCD ID: GLY) (formula: C<sub>2</sub>H<sub>5</sub>NO<sub>2</sub>).



Mol	Chain	Residues	Atoms				ZeroOcc	AltConf
3	A	1	Total	C	N	O	0	0
			5	2	1	2		
3	C	1	Total	C	N	O	0	0
			5	2	1	2		

- Molecule 4 is 2-[4-(4-{4-[(2-AMINO-5-FORMYL-4-OXO-3,4,5,6,7,8-HEXAHYDRO-PTE RIDIN-6-YLMETHYL)-AMINO]-BENZOYLAMINO}-4-CARBOXY-BUTYRYLAMINO)-4-CARBOXY-BUTYRYLAMINO]-PENTANEDIOIC ACID (CCD ID: TGF) (formula: C<sub>30</sub>H<sub>37</sub>N<sub>9</sub>O<sub>13</sub>).



Mol	Chain	Residues	Atoms			ZeroOcc	AltConf	
4	B	1	Total	C	N	O	0	1
			60	34	9	17		
4	D	1	Total	C	N	O	0	1
			73	41	11	21		

- Molecule 5 is GLYCEROL (CCD ID: GOL) (formula: C<sub>3</sub>H<sub>8</sub>O<sub>3</sub>).



Mol	Chain	Residues	Atoms			ZeroOcc	AltConf
5	B	1	Total	C	O	0	0
			6	3	3		
5	B	1	Total	C	O	0	0
			6	3	3		

*Continued on next page...*

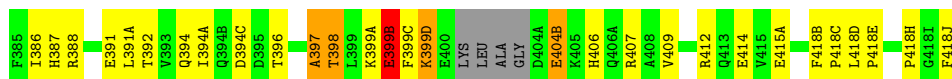
*Continued from previous page...*

Mol	Chain	Residues	Atoms			ZeroOcc	AltConf
5	C	1	Total	C	O	0	0
			6	3	3		
5	D	1	Total	C	O	0	0
			6	3	3		

- Molecule 6 is water.

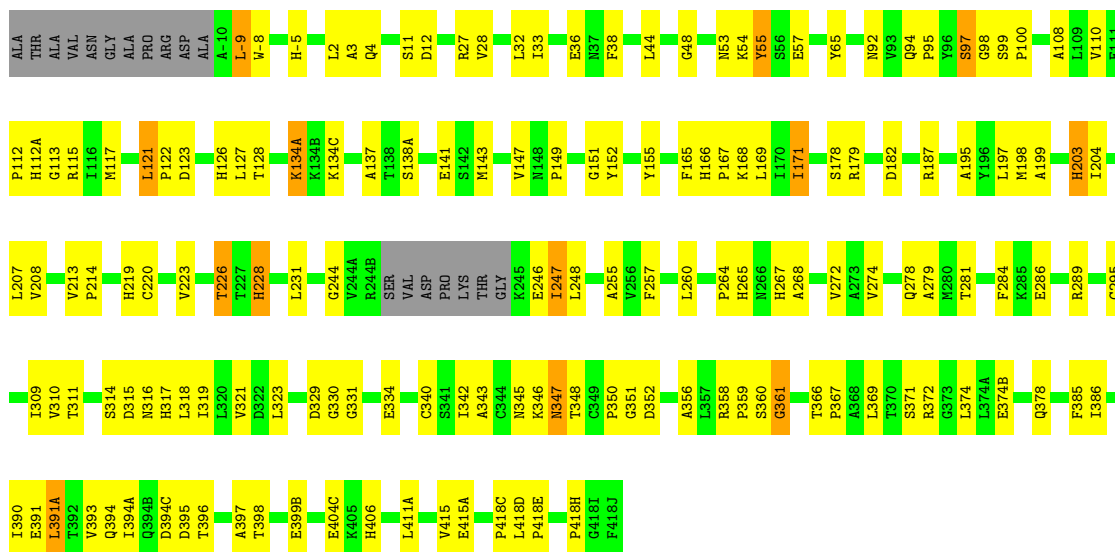
Mol	Chain	Residues	Atoms		ZeroOcc	AltConf
6	A	99	Total	O	0	0
			99	99		
6	B	107	Total	O	0	0
			107	107		
6	C	99	Total	O	0	0
			99	99		
6	D	73	Total	O	0	0
			73	73		





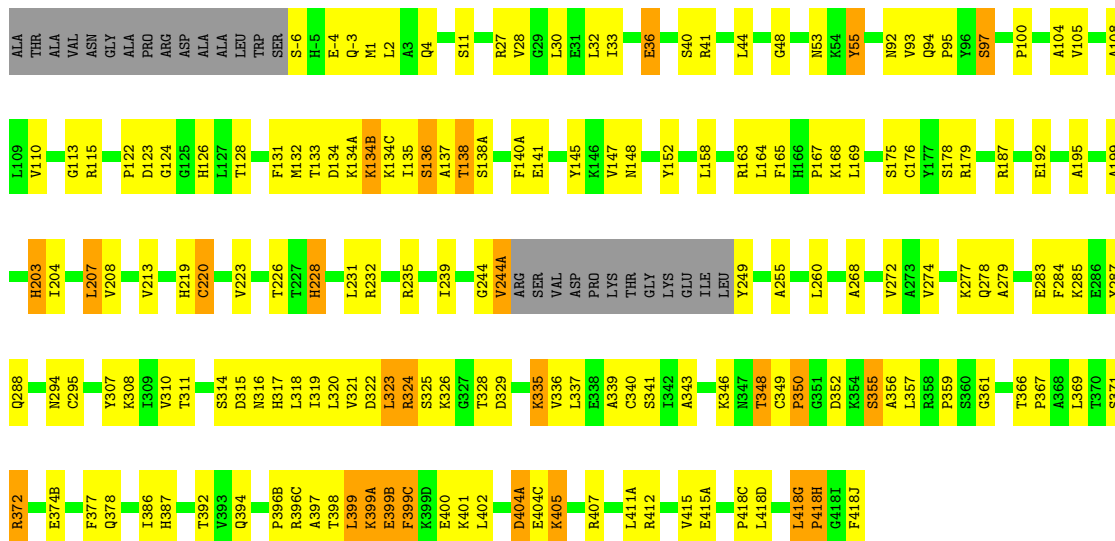
• Molecule 1: Serine Hydroxymethyltransferase

Chain C: 63% 30%



• Molecule 1: Serine Hydroxymethyltransferase

Chain D: 59% 30% 5% 6%



## 4 Data and refinement statistics

Property	Value	Source
Space group	P 41	Depositor
Cell constants a, b, c, $\alpha$ , $\beta$ , $\gamma$	114.08Å 114.08Å 156.72Å 90.00° 90.00° 90.00°	Depositor
Resolution (Å)	19.79 – 2.70 19.79 – 2.70	Depositor EDS
% Data completeness (in resolution range)	86.7 (19.79-2.70) 86.7 (19.79-2.70)	Depositor EDS
$R_{merge}$	0.08	Depositor
$R_{sym}$	(Not available)	Depositor
$\langle I/\sigma(I) \rangle$ <sup>1</sup>	2.27 (at 2.68Å)	Xtrriage
Refinement program	CNS	Depositor
R, $R_{free}$	0.220 , 0.294 0.221 , 0.293	Depositor DCC
$R_{free}$ test set	4801 reflections (10.07%)	wwPDB-VP
Wilson B-factor (Å <sup>2</sup> )	49.0	Xtrriage
Anisotropy	0.041	Xtrriage
Bulk solvent $k_{sol}$ (e/Å <sup>3</sup> ), $B_{sol}$ (Å <sup>2</sup> )	0.27 , 25.1	EDS
L-test for twinning <sup>2</sup>	$\langle  L  \rangle = 0.53$ , $\langle L^2 \rangle = 0.37$	Xtrriage
Estimated twinning fraction	0.470 for h,-k,-l	Xtrriage
$F_o, F_c$ correlation	0.97	EDS
Total number of atoms	14342	wwPDB-VP
Average B, all atoms (Å <sup>2</sup> )	48.0	wwPDB-VP

Xtrriage's analysis on translational NCS is as follows: *The largest off-origin peak in the Patterson function is 3.41% of the height of the origin peak. No significant pseudotranslation is detected.*

<sup>1</sup>Intensities estimated from amplitudes.

<sup>2</sup>Theoretical values of  $\langle |L| \rangle$ ,  $\langle L^2 \rangle$  for acentric reflections are 0.5, 0.333 respectively for untwinned datasets, and 0.375, 0.2 for perfectly twinned datasets.

## 5 Model quality [i](#)

### 5.1 Standard geometry [i](#)

Bond lengths and bond angles in the following residue types are not validated in this section: PLP, TGF, GOL

The Z score for a bond length (or angle) is the number of standard deviations the observed value is removed from the expected value. A bond length (or angle) with  $|Z| > 5$  is considered an outlier worth inspection. RMSZ is the root-mean-square of all Z scores of the bond lengths (or angles).

Mol	Chain	Bond lengths		Bond angles	
		RMSZ	# Z  >5	RMSZ	# Z  >5
1	A	0.48	0/3560	0.96	16/4828 (0.3%)
1	B	0.48	0/3471	0.95	13/4706 (0.3%)
1	C	0.48	0/3541	0.96	15/4804 (0.3%)
1	D	0.46	0/3442	1.00	19/4671 (0.4%)
All	All	0.47	0/14014	0.97	63/19009 (0.3%)

There are no bond length outliers.

The worst 5 of 63 bond angle outliers are listed below:

Mol	Chain	Res	Type	Atoms	Z	Observed(°)	Ideal(°)
1	D	396(C)	ARG	N-CA-C	-9.70	100.71	112.54
1	D	399(C)	PHE	N-CA-C	-8.08	101.56	111.33
1	C	356	ALA	N-CA-C	-7.70	103.86	113.18
1	A	398	THR	N-CA-C	7.57	118.59	108.38
1	A	53	ASN	N-CA-C	7.30	120.28	111.82

There are no chirality outliers.

There are no planarity outliers.

### 5.2 Too-close contacts [i](#)

In the following table, the Non-H and H(model) columns list the number of non-hydrogen atoms and hydrogen atoms in the chain respectively. The H(added) column lists the number of hydrogen atoms added and optimized by MolProbity. The Clashes column lists the number of clashes within the asymmetric unit, whereas Symm-Clashes lists symmetry-related clashes.

Mol	Chain	Non-H	H(model)	H(added)	Clashes	Symm-Clashes
1	A	3489	0	3326	125	0
1	B	3404	0	3204	139	0

*Continued on next page...*

Continued from previous page...

Mol	Chain	Non-H	H(model)	H(added)	Clashes	Symm-Clashes
1	C	3470	0	3301	122	0
1	D	3374	0	3201	148	0
2	A	15	0	6	0	0
2	B	15	0	6	0	0
2	C	15	0	6	0	0
2	D	15	0	6	0	0
3	A	5	0	2	0	0
3	C	5	0	2	2	0
4	B	60	0	10	2	0
4	D	73	0	28	4	0
5	B	12	0	16	1	0
5	C	6	0	8	0	0
5	D	6	0	8	0	0
6	A	99	0	0	5	0
6	B	107	0	0	4	0
6	C	99	0	0	5	0
6	D	73	0	0	3	0
All	All	14342	0	13130	506	0

The all-atom clashscore is defined as the number of clashes found per 1000 atoms (including hydrogen atoms). The all-atom clashscore for this structure is 19.

The worst 5 of 506 close contacts within the same asymmetric unit are listed below, sorted by their clash magnitude.

Atom-1	Atom-2	Interatomic distance (Å)	Clash overlap (Å)
1:C:398:THR:HG22	1:C:399(B):GLU:HG3	1.17	1.07
1:C:398:THR:HG22	1:C:399(B):GLU:CG	1.89	1.01
1:C:398:THR:CG2	1:C:399(B):GLU:HG3	1.88	1.01
1:D:418(G):LEU:HD12	1:D:418(J):PHE:HD2	1.36	0.90
1:C:203:HIS:HD2	1:C:317:HIS:HE2	1.23	0.86

There are no symmetry-related clashes.

## 5.3 Torsion angles [i](#)

### 5.3.1 Protein backbone [i](#)

In the following table, the Percentiles column shows the percent Ramachandran outliers of the chain as a percentile score with respect to all X-ray entries followed by that with respect to entries of similar resolution.

The Analysed column shows the number of residues for which the backbone conformation was analysed, and the total number of residues.

Mol	Chain	Analysed	Favoured	Allowed	Outliers	Percentiles	
1	A	462/483 (96%)	412 (89%)	39 (8%)	11 (2%)	4	12
1	B	447/483 (92%)	404 (90%)	34 (8%)	9 (2%)	6	16
1	C	461/483 (95%)	427 (93%)	31 (7%)	3 (1%)	18	41
1	D	452/483 (94%)	404 (89%)	36 (8%)	12 (3%)	4	10
All	All	1822/1932 (94%)	1647 (90%)	140 (8%)	35 (2%)	6	17

5 of 35 Ramachandran outliers are listed below:

Mol	Chain	Res	Type
1	A	244(C)	SER
1	A	244(D)	VAL
1	A	355	SER
1	A	356	ALA
1	A	396(B)	PRO

### 5.3.2 Protein sidechains [i](#)

In the following table, the Percentiles column shows the percent sidechain outliers of the chain as a percentile score with respect to all X-ray entries followed by that with respect to entries of similar resolution.

The Analysed column shows the number of residues for which the sidechain conformation was analysed, and the total number of residues.

Mol	Chain	Analysed	Rotameric	Outliers	Percentiles	
1	A	350/391 (90%)	339 (97%)	11 (3%)	35	65
1	B	335/391 (86%)	321 (96%)	14 (4%)	26	55
1	C	345/391 (88%)	337 (98%)	8 (2%)	44	73
1	D	333/391 (85%)	322 (97%)	11 (3%)	33	63
All	All	1363/1564 (87%)	1319 (97%)	44 (3%)	34	64

5 of 44 residues with a non-rotameric sidechain are listed below:

Mol	Chain	Res	Type
1	C	121	LEU
1	D	97	SER
1	C	203	HIS

*Continued on next page...*

*Continued from previous page...*

Mol	Chain	Res	Type
1	C	347	ASN
1	D	207	LEU

Sometimes sidechains can be flipped to improve hydrogen bonding and reduce clashes. 5 of 22 such sidechains are listed below:

Mol	Chain	Res	Type
1	C	203	HIS
1	D	-3	GLN
1	C	347	ASN
1	D	4	GLN
1	A	378	GLN

### 5.3.3 RNA [i](#)

There are no RNA molecules in this entry.

### 5.4 Non-standard residues in protein, DNA, RNA chains [i](#)

There are no non-standard protein/DNA/RNA residues in this entry.

### 5.5 Carbohydrates [i](#)

There are no oligosaccharides in this entry.

### 5.6 Ligand geometry [i](#)

14 ligands are modelled in this entry.

In the following table, the Counts columns list the number of bonds (or angles) for which Mogul statistics could be retrieved, the number of bonds (or angles) that are observed in the model and the number of bonds (or angles) that are defined in the Chemical Component Dictionary. The Link column lists molecule types, if any, to which the group is linked. The Z score for a bond length (or angle) is the number of standard deviations the observed value is removed from the expected value. A bond length (or angle) with  $|Z| > 2$  is considered an outlier worth inspection. RMSZ is the root-mean-square of all Z scores of the bond lengths (or angles).

Mol	Type	Chain	Res	Link	Bond lengths			Bond angles		
					Counts	RMSZ	$\# Z  > 2$	Counts	RMSZ	$\# Z  > 2$
3	GLY	A	420(B)	2	4,4,4	0.96	0	3,4,4	1.06	0

Mol	Type	Chain	Res	Link	Bond lengths			Bond angles		
					Counts	RMSZ	# Z  > 2	Counts	RMSZ	# Z  > 2
2	PLP	D	419(A)	1	15,15,16	1.50	3 (20%)	21,22,23	2.84	11 (52%)
3	GLY	C	420(B)	2	4,4,4	0.92	0	3,4,4	1.01	0
5	GOL	C	421	-	5,5,5	0.97	0	5,5,5	0.20	0
2	PLP	A	419(A)	1,3	15,15,16	1.59	4 (26%)	21,22,23	2.70	9 (42%)
2	PLP	C	419(A)	1,3	15,15,16	1.44	3 (20%)	21,22,23	2.75	8 (38%)
4	TGF	D	420(F)[B]	-	51,54,54	2.31	10 (19%)	59,74,74	2.24	13 (22%)
4	TGF	B	420(C)[B]	-	51,54,54	2.42	10 (19%)	59,74,74	2.17	13 (22%)
5	GOL	D	421	-	5,5,5	0.68	0	5,5,5	0.28	0
2	PLP	B	419(A)	1	15,15,16	1.63	5 (33%)	21,22,23	2.83	11 (52%)
5	GOL	B	422	-	5,5,5	0.84	0	5,5,5	0.23	0
5	GOL	B	421	-	5,5,5	0.61	0	5,5,5	0.27	0
4	TGF	D	420(F)[A]	-	51,54,54	2.32	11 (21%)	59,74,74	2.28	14 (23%)
4	TGF	B	420(C)[A]	-	51,54,54	2.42	10 (19%)	59,74,74	2.17	13 (22%)

In the following table, the Chirals column lists the number of chiral outliers, the number of chiral centers analysed, the number of these observed in the model and the number defined in the Chemical Component Dictionary. Similar counts are reported in the Torsion and Rings columns. <sup>1,2</sup> means no outliers of that kind were identified.

Mol	Type	Chain	Res	Link	Chirals	Torsions	Rings
3	GLY	A	420(B)	2	-	2/2/2/2	-
2	PLP	D	419(A)	1	-	3/6/6/8	0/1/1/1
3	GLY	C	420(B)	2	-	2/2/2/2	-
5	GOL	C	421	-	-	0/4/4/4	-
2	PLP	A	419(A)	1,3	-	0/6/6/8	0/1/1/1
2	PLP	C	419(A)	1,3	-	0/6/6/8	0/1/1/1
4	TGF	D	420(F)[B]	-	-	21/50/63/63	0/3/3/3
4	TGF	B	420(C)[B]	-	-	18/50/63/63	0/3/3/3
5	GOL	D	421	-	-	0/4/4/4	-
2	PLP	B	419(A)	1	-	3/6/6/8	0/1/1/1
5	GOL	B	422	-	-	0/4/4/4	-
5	GOL	B	421	-	-	0/4/4/4	-
4	TGF	D	420(F)[A]	-	-	20/50/63/63	0/3/3/3
4	TGF	B	420(C)[A]	-	-	18/50/63/63	0/3/3/3

The worst 5 of 56 bond length outliers are listed below:

Mol	Chain	Res	Type	Atoms	Z	Observed(Å)	Ideal(Å)
4	B	420(C)[A]	TGF	C4A-N5	9.00	1.52	1.38

Continued on next page...

*Continued from previous page...*

Mol	Chain	Res	Type	Atoms	Z	Observed(Å)	Ideal(Å)
4	B	420(C)[B]	TGF	C4A-N5	9.00	1.52	1.38
4	D	420(F)[A]	TGF	C4A-N5	8.65	1.51	1.38
4	D	420(F)[B]	TGF	C4A-N5	8.65	1.51	1.38
4	B	420(C)[A]	TGF	C13-C14	6.16	1.49	1.39

The worst 5 of 92 bond angle outliers are listed below:

Mol	Chain	Res	Type	Atoms	Z	Observed(°)	Ideal(°)
2	C	419(A)	PLP	O4P-C5A-C5	7.04	122.56	109.36
2	B	419(A)	PLP	O4P-C5A-C5	6.84	122.18	109.36
2	D	419(A)	PLP	O4P-C5A-C5	6.48	121.51	109.36
4	B	420(C)[A]	TGF	NA2-C2-N1	6.43	132.21	119.67
4	B	420(C)[B]	TGF	NA2-C2-N1	6.43	132.21	119.67

There are no chirality outliers.

5 of 87 torsion outliers are listed below:

Mol	Chain	Res	Type	Atoms
2	B	419(A)	PLP	C5A-O4P-P-O3P
2	D	419(A)	PLP	C5A-O4P-P-O1P
2	D	419(A)	PLP	C5A-O4P-P-O2P
2	D	419(A)	PLP	C5A-O4P-P-O3P
3	A	420(B)	GLY	O-C-CA-N

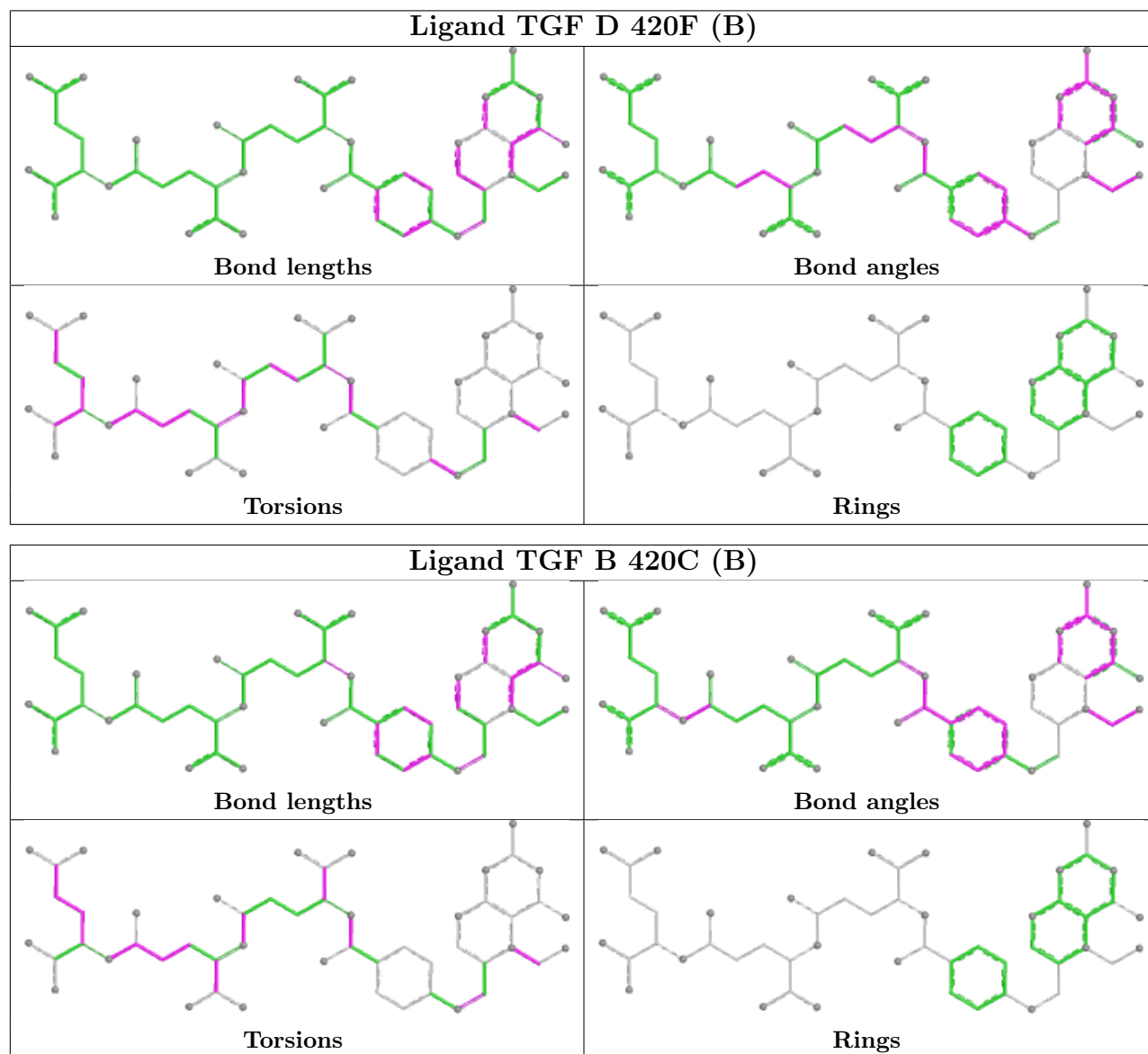
There are no ring outliers.

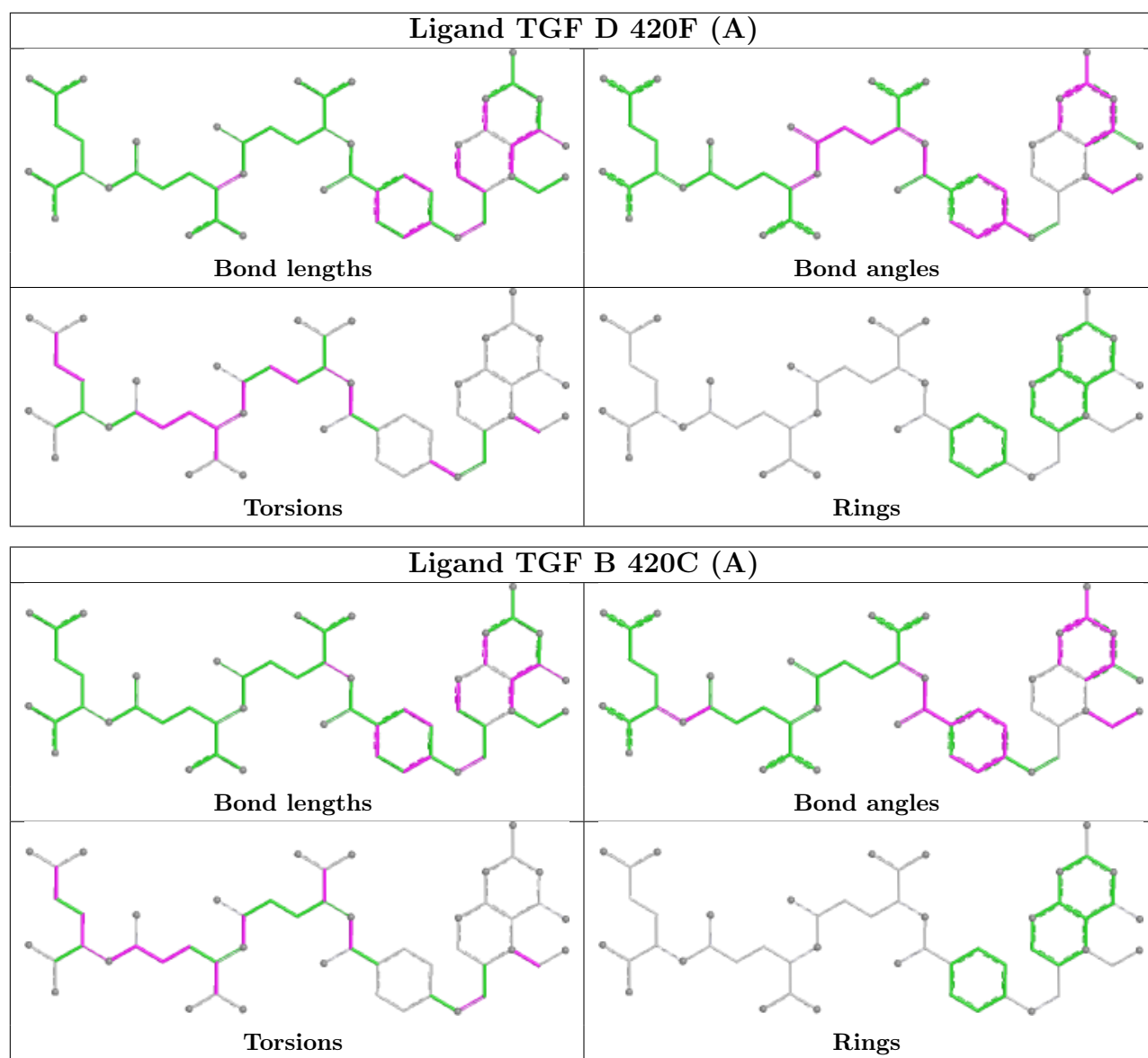
5 monomers are involved in 9 short contacts:

Mol	Chain	Res	Type	Clashes	Symm-Clashes
3	C	420(B)	GLY	2	0
4	D	420(F)[B]	TGF	2	0
5	B	422	GOL	1	0
4	D	420(F)[A]	TGF	2	0
4	B	420(C)[A]	TGF	2	0

The following is a two-dimensional graphical depiction of Mogul quality analysis of bond lengths, bond angles, torsion angles, and ring geometry for all instances of the Ligand of Interest. In addition, ligands with molecular weight > 250 and outliers as shown on the validation Tables will also be included. For torsion angles, if less than 5% of the Mogul distribution of torsion angles is within 10 degrees of the torsion angle in question, then that torsion angle is considered an outlier. Any bond that is central to one or more torsion angles identified as an outlier by Mogul will be highlighted in the graph. For rings, the root-mean-square deviation (RMSD) between the ring in question and similar rings identified by Mogul is calculated over all ring torsion angles. If the

average RMSD is greater than 60 degrees and the minimal RMSD between the ring in question and any Mogul-identified rings is also greater than 60 degrees, then that ring is considered an outlier. The outliers are highlighted in purple. The color gray indicates Mogul did not find sufficient equivalents in the CSD to analyse the geometry.





## 5.7 Other polymers [i](#)

There are no such residues in this entry.

## 5.8 Polymer linkage issues [i](#)

There are no chain breaks in this entry.

## 6 Fit of model and data [i](#)

### 6.1 Protein, DNA and RNA chains [i](#)

In the following table, the column labelled '#RSRZ > 2' contains the number (and percentage) of RSRZ outliers, followed by percent RSRZ outliers for the chain as percentile scores relative to all X-ray entries and entries of similar resolution. The OWAB column contains the minimum, median, 95<sup>th</sup> percentile and maximum values of the occupancy-weighted average B-factor per residue. The column labelled 'Q < 0.9' lists the number of (and percentage) of residues with an average occupancy less than 0.9.

Mol	Chain	Analysed	<RSRZ>	#RSRZ>2	OWAB(Å <sup>2</sup> )	Q<0.9
1	A	465/483 (96%)	-1.52	0 100 100	22, 44, 78, 153	1 (0%)
1	B	455/483 (94%)	-1.48	0 100 100	16, 45, 92, 155	3 (0%)
1	C	465/483 (96%)	-1.53	0 100 100	22, 43, 73, 125	0
1	D	456/483 (94%)	-1.48	0 100 100	20, 46, 94, 156	0
All	All	1841/1932 (95%)	-1.50	0 100 100	16, 44, 83, 156	4 (0%)

There are no RSRZ outliers to report.

### 6.2 Non-standard residues in protein, DNA, RNA chains [i](#)

There are no non-standard protein/DNA/RNA residues in this entry.

### 6.3 Carbohydrates [i](#)

There are no oligosaccharides in this entry.

### 6.4 Ligands [i](#)

In the following table, the Atoms column lists the number of modelled atoms in the group and the number defined in the chemical component dictionary. The B-factors column lists the minimum, median, 95<sup>th</sup> percentile and maximum values of B factors of atoms in the group. The column labelled 'Q < 0.9' lists the number of atoms with occupancy less than 0.9.

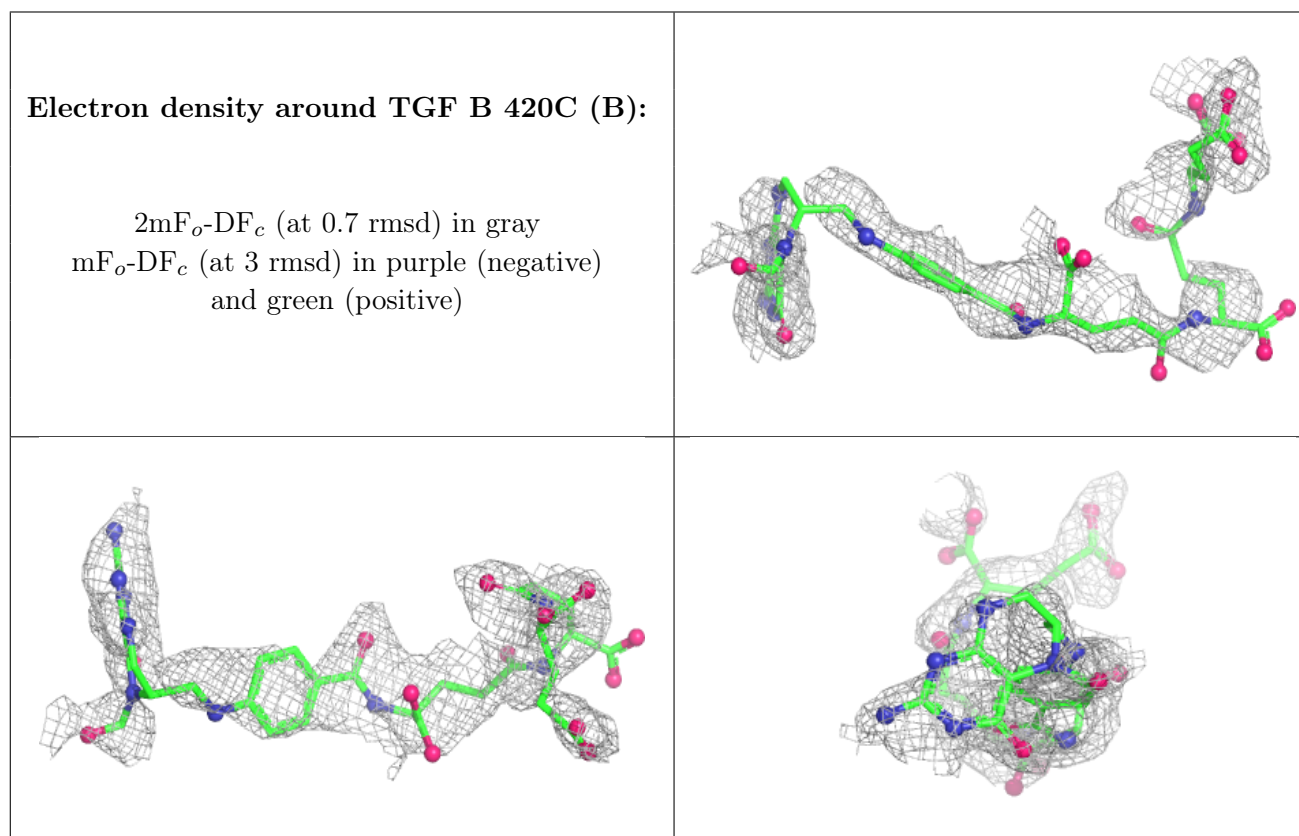
Mol	Type	Chain	Res	Atoms	RSCC	RSR	B-factors(Å <sup>2</sup> )	Q<0.9
5	GOL	C	421	6/6	0.97	0.05	75,75,75,75	0
4	TGF	B	420(C)[B]	52/52	0.98	0.05	24,61,107,122	52
4	TGF	D	420(F)[A]	52/52	0.98	0.07	8,54,92,99	52
4	TGF	D	420(F)[B]	52/52	0.98	0.07	20,59,94,99	52

*Continued on next page...*

Continued from previous page...

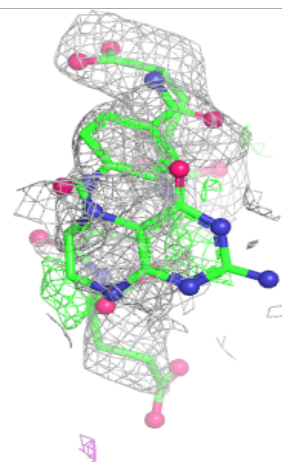
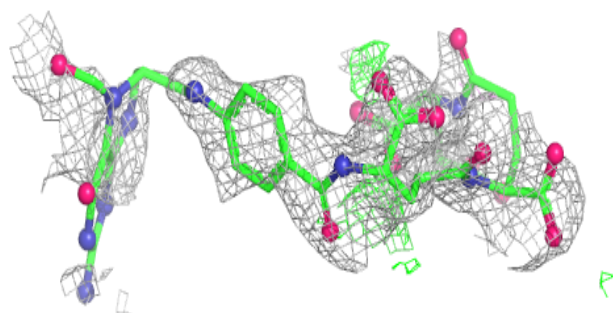
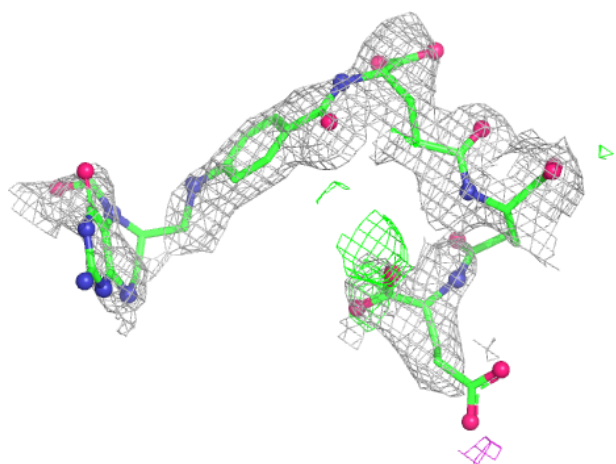
Mol	Type	Chain	Res	Atoms	RSCC	RSR	B-factors(Å <sup>2</sup> )	Q<0.9
5	GOL	B	421	6/6	0.98	0.05	58,58,58,58	0
5	GOL	B	422	6/6	0.98	0.05	77,77,77,77	0
4	TGF	B	420(C)[A]	52/52	0.98	0.05	20,58,107,122	52
5	GOL	D	421	6/6	0.98	0.04	56,56,56,56	0
2	PLP	B	419(A)	15/16	0.99	0.04	45,45,45,45	0
2	PLP	D	419(A)	15/16	0.99	0.03	37,37,37,37	0
3	GLY	A	420(B)	5/5	0.99	0.03	67,67,67,67	0
3	GLY	C	420(B)	5/5	0.99	0.04	51,51,51,51	0
2	PLP	C	419(A)	15/16	1.00	0.03	36,36,36,36	0
2	PLP	A	419(A)	15/16	1.00	0.03	37,37,37,37	0

The following is a graphical depiction of the model fit to experimental electron density of all instances of the Ligand of Interest. In addition, ligands with molecular weight > 250 and outliers as shown on the geometry validation Tables will also be included. Each fit is shown from different orientation to approximate a three-dimensional view.



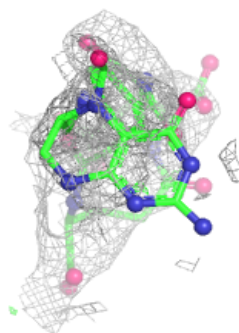
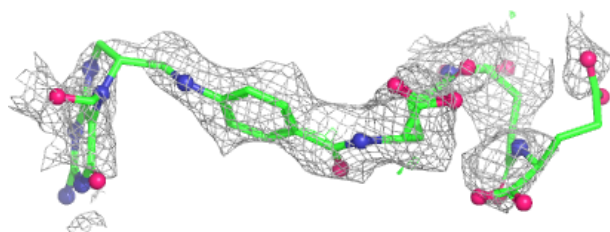
**Electron density around TGF D 420F (A):**

$2mF_o-DF_c$  (at 0.7 rmsd) in gray  
 $mF_o-DF_c$  (at 3 rmsd) in purple (negative)  
and green (positive)

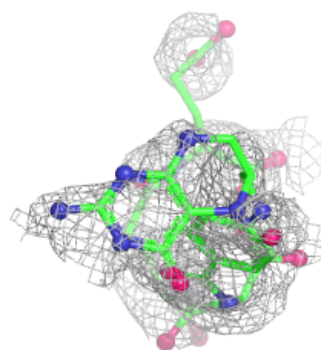
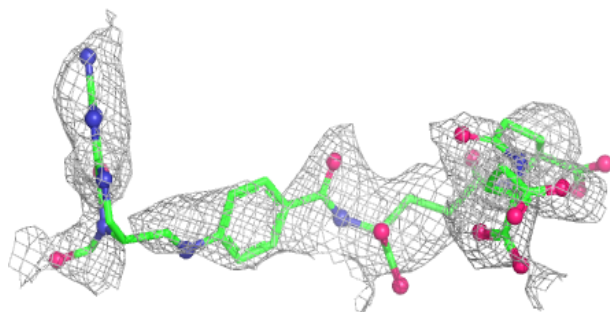
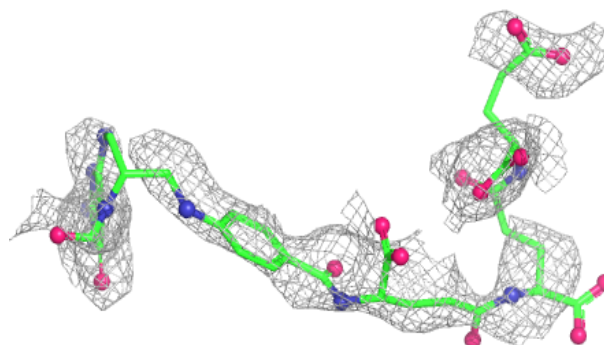


**Electron density around TGF D 420F (B):**

$2mF_o-DF_c$  (at 0.7 rmsd) in gray  
 $mF_o-DF_c$  (at 3 rmsd) in purple (negative)  
and green (positive)

**Electron density around TGF B 420C (A):**

$2mF_o-DF_c$  (at 0.7 rmsd) in gray  
 $mF_o-DF_c$  (at 3 rmsd) in purple (negative)  
and green (positive)



## 6.5 Other polymers [i](#)

There are no such residues in this entry.