



# wwPDB X-ray Structure Validation Summary Report ⓘ

Apr 5, 2026 – 12:14 PM UTC

PDB ID : 3LS3 / pdb\_00003ls3  
Title : Padron0.9-ON (fluorescent state)  
Authors : Brakemann, T.; Weber, G.; Trowitzsch, S.; Wahl, M.C.; Jakobs, S.  
Deposited on : 2010-02-12  
Resolution : 1.65 Å(reported)

This is a wwPDB X-ray Structure Validation Summary Report for a publicly released PDB entry.

We welcome your comments at [validation@mail.wwpdb.org](mailto:validation@mail.wwpdb.org)

A user guide is available at

<https://www.wwpdb.org/validation/2017/XrayValidationReportHelp>

with specific help available everywhere you see the ⓘ symbol.

The types of validation reports are described at

<http://www.wwpdb.org/validation/2017/FAQs#types>.

---

The following versions of software and data (see [references ⓘ](#)) were used in the production of this report:

MolProbity : 4-5-2 with Phenix2.0  
Mogul : 2022.3.0, CSD as543be (2022)  
Xtriage (Phenix) : 2.0  
EDS : 3.0  
Percentile statistics : 20250101.v01 (using entries in the PDB archive January 1st 2025)  
CCP4 : 9.0.010 (Gargrove)  
Density-Fitness : 1.0.12  
Ideal geometry (proteins) : Engh & Huber (2001)  
Ideal geometry (DNA, RNA) : Parkinson et al. (1996)  
Validation Pipeline (wwPDB-VP) : 2.49

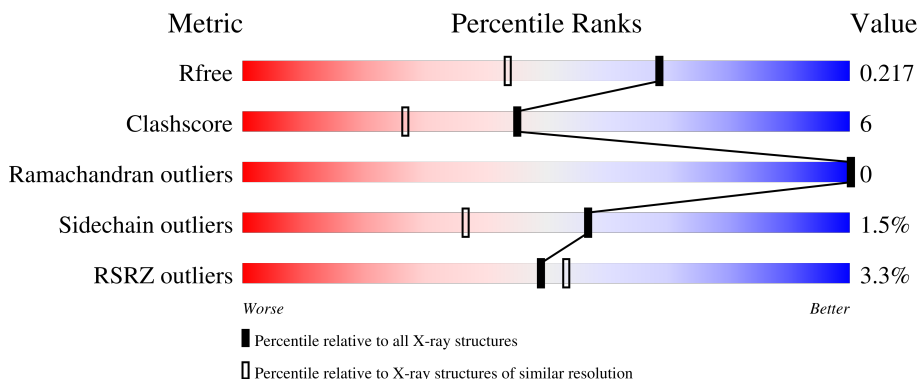
# 1 Overall quality at a glance

The following experimental techniques were used to determine the structure:

*X-RAY DIFFRACTION*

The reported resolution of this entry is 1.65 Å.

Percentile scores (ranging between 0-100) for global validation metrics of the entry are shown in the following graphic. The table shows the number of entries on which the scores are based.



Metric	Whole archive (#Entries)	Similar resolution (#Entries, resolution range(Å))
$R_{free}$	180053	2563 (1.66-1.66)
Clashscore	190562	2662 (1.66-1.66)
Ramachandran outliers	187476	2621 (1.66-1.66)
Sidechain outliers	187428	2621 (1.66-1.66)
RSRZ outliers	180081	2564 (1.66-1.66)

The table below summarises the geometric issues observed across the polymeric chains and their fit to the electron density. The red, orange, yellow and green segments of the lower bar indicate the fraction of residues that contain outliers for  $\geq 3$ , 2, 1 and 0 types of geometric quality criteria respectively. A grey segment represents the fraction of residues that are not modelled. The numeric value for each fraction is indicated below the corresponding segment, with a dot representing fractions  $\leq 5\%$ . The upper red bar (where present) indicates the fraction of residues that have poor fit to the electron density. The numeric value is given above the bar.

Mol	Chain	Length	Quality of chain
1	A	235	 7% 82% 9% • 8%
1	B	235	 % 83% 8% 9%
1	C	235	 2% 83% 8% 9%
1	D	235	 3% 86% 9% •

The following table lists non-polymeric compounds, carbohydrate monomers and non-standard

residues in protein, DNA, RNA chains that are outliers for geometric or electron-density-fit criteria:

Mol	Type	Chain	Res	Chirality	Geometry	Clashes	Electron density
3	SPD	B	225	-	-	X	-

## 2 Entry composition [i](#)

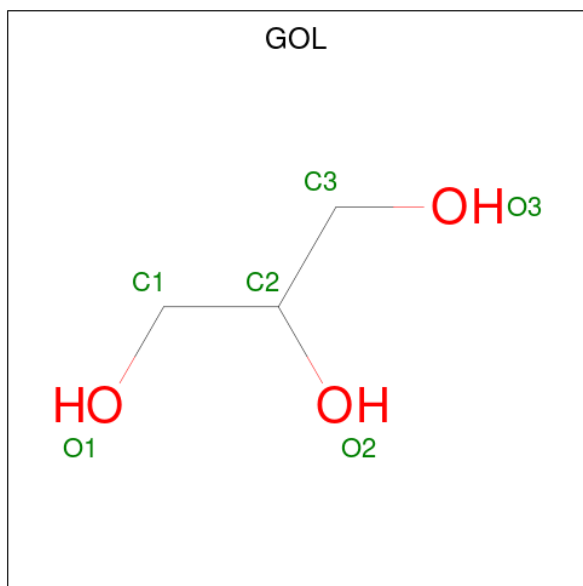
There are 5 unique types of molecules in this entry. The entry contains 8231 atoms, of which 0 are hydrogens and 0 are deuteriums.

In the tables below, the ZeroOcc column contains the number of atoms modelled with zero occupancy, the AltConf column contains the number of residues with at least one atom in alternate conformation and the Trace column contains the number of residues modelled with at most 2 atoms.

- Molecule 1 is a protein called Padron0.9.

Mol	Chain	Residues	Atoms					ZeroOcc	AltConf	Trace
			Total	C	N	O	S			
1	A	216	Total 1846	C 1172	N 311	O 348	S 15	0	16	0
1	B	215	Total 1857	C 1188	N 312	O 344	S 13	0	19	0
1	C	214	Total 1816	C 1159	N 309	O 335	S 13	0	16	0
1	D	225	Total 1921	C 1223	N 329	O 355	S 14	0	18	0

- Molecule 2 is GLYCEROL (CCD ID: GOL) (formula: C<sub>3</sub>H<sub>8</sub>O<sub>3</sub>).



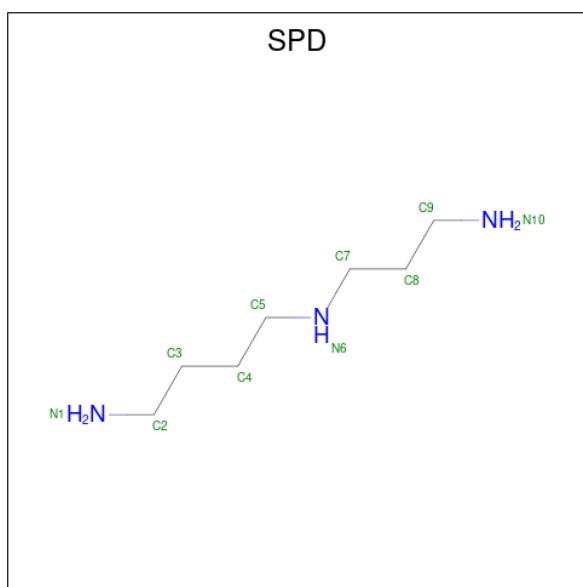
Mol	Chain	Residues	Atoms			ZeroOcc	AltConf
			Total	C	O		
2	A	1	Total 6	C 3	O 3	0	0
2	A	1	Total 6	C 3	O 3	0	0

*Continued on next page...*

Continued from previous page...

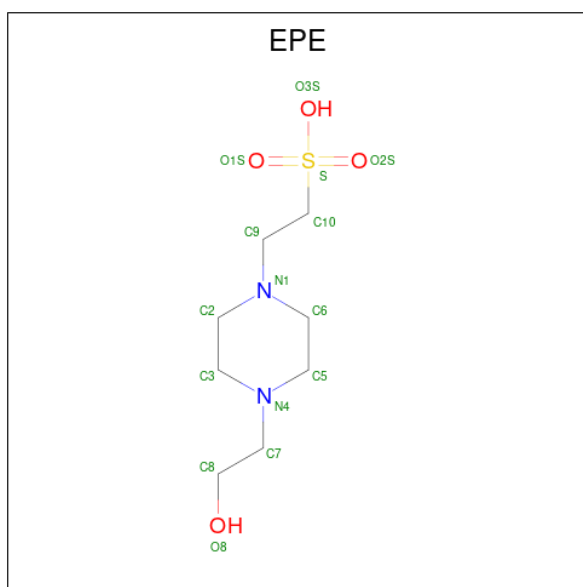
Mol	Chain	Residues	Atoms			ZeroOcc	AltConf
2	C	1	Total	C	O	0	0
			6	3	3		
2	D	1	Total	C	O	0	0
			6	3	3		
2	D	1	Total	C	O	0	0
			6	3	3		

- Molecule 3 is SPERMIDINE (CCD ID: SPD) (formula: C<sub>7</sub>H<sub>19</sub>N<sub>3</sub>).



Mol	Chain	Residues	Atoms			ZeroOcc	AltConf
3	A	1	Total	C	N	0	0
			10	7	3		
3	B	1	Total	C	N	0	0
			10	7	3		
3	B	1	Total	C	N	0	0
			10	7	3		
3	C	1	Total	C	N	0	0
			10	7	3		
3	C	1	Total	C	N	0	0
			10	7	3		

- Molecule 4 is 4-(2-HYDROXYETHYL)-1-PIPERAZINE ETHANESULFONIC ACID (CCD ID: EPE) (formula: C<sub>8</sub>H<sub>18</sub>N<sub>2</sub>O<sub>4</sub>S).



Mol	Chain	Residues	Atoms					ZeroOcc	AltConf
			Total	C	N	O	S		
4	D	1	15	8	2	4	1	0	0

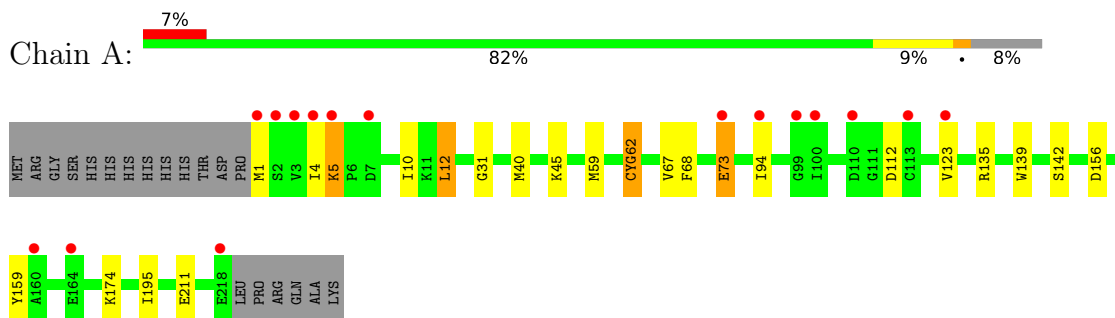
- Molecule 5 is water.

Mol	Chain	Residues	Atoms		ZeroOcc	AltConf
5	A	156	Total	O	0	10
			166	166		
5	B	169	Total	O	0	1
			170	170		
5	C	153	Total	O	0	2
			155	155		
5	D	202	Total	O	0	3
			205	205		

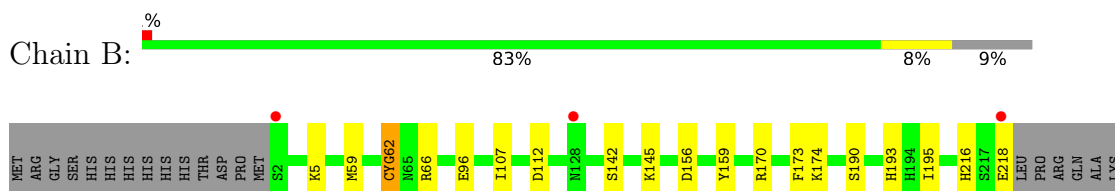
### 3 Residue-property plots [i](#)

These plots are drawn for all protein, RNA, DNA and oligosaccharide chains in the entry. The first graphic for a chain summarises the proportions of the various outlier classes displayed in the second graphic. The second graphic shows the sequence view annotated by issues in geometry and electron density. Residues are color-coded according to the number of geometric quality criteria for which they contain at least one outlier: green = 0, yellow = 1, orange = 2 and red = 3 or more. A red dot above a residue indicates a poor fit to the electron density ( $RSRZ > 2$ ). Stretches of 2 or more consecutive residues without any outlier are shown as a green connector. Residues present in the sample, but not in the model, are shown in grey.

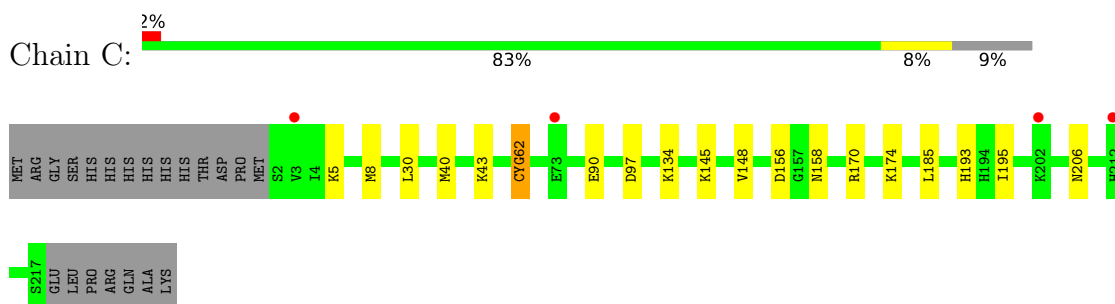
- Molecule 1: Padron0.9



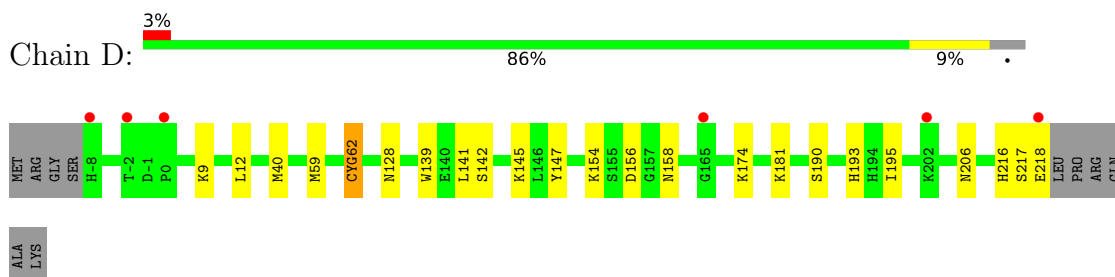
- Molecule 1: Padron0.9



- Molecule 1: Padron0.9



- Molecule 1: Padron0.9



## 4 Data and refinement statistics

Property	Value	Source
Space group	P 21 21 21	Depositor
Cell constants a, b, c, $\alpha$ , $\beta$ , $\gamma$	72.86Å 103.81Å 121.21Å 90.00° 90.00° 90.00°	Depositor
Resolution (Å)	20.00 – 1.65 20.00 – 1.65	Depositor EDS
% Data completeness (in resolution range)	99.3 (20.00-1.65) 99.2 (20.00-1.65)	Depositor EDS
$R_{merge}$	(Not available)	Depositor
$R_{sym}$	0.04	Depositor
$\langle I/\sigma(I) \rangle$ <sup>1</sup>	1.60 (at 1.66Å)	Xtrriage
Refinement program	REFMAC 5.5.0063	Depositor
R, $R_{free}$	0.168 , 0.200 0.183 , 0.217	Depositor DCC
$R_{free}$ test set	5479 reflections (4.96%)	wwPDB-VP
Wilson B-factor (Å <sup>2</sup> )	25.0	Xtrriage
Anisotropy	0.132	Xtrriage
Bulk solvent $k_{sol}$ (e/Å <sup>3</sup> ), $B_{sol}$ (Å <sup>2</sup> )	0.39 , 45.6	EDS
L-test for twinning <sup>2</sup>	$\langle  L  \rangle = 0.49$ , $\langle L^2 \rangle = 0.33$	Xtrriage
Estimated twinning fraction	No twinning to report.	Xtrriage
$F_o, F_c$ correlation	0.96	EDS
Total number of atoms	8231	wwPDB-VP
Average B, all atoms (Å <sup>2</sup> )	20.0	wwPDB-VP

Xtrriage's analysis on translational NCS is as follows: *The largest off-origin peak in the Patterson function is 4.22% of the height of the origin peak. No significant pseudotranslation is detected.*

<sup>1</sup>Intensities estimated from amplitudes.

<sup>2</sup>Theoretical values of  $\langle |L| \rangle$ ,  $\langle L^2 \rangle$  for acentric reflections are 0.5, 0.333 respectively for untwinned datasets, and 0.375, 0.2 for perfectly twinned datasets.

## 5 Model quality [i](#)

### 5.1 Standard geometry [i](#)

Bond lengths and bond angles in the following residue types are not validated in this section: EPE, GYC, SPD, GOL

The Z score for a bond length (or angle) is the number of standard deviations the observed value is removed from the expected value. A bond length (or angle) with  $|Z| > 5$  is considered an outlier worth inspection. RMSZ is the root-mean-square of all Z scores of the bond lengths (or angles).

Mol	Chain	Bond lengths		Bond angles	
		RMSZ	# Z  >5	RMSZ	# Z  >5
1	A	0.62	0/1888	0.75	0/2544
1	B	0.73	0/1911	0.78	0/2570
1	C	0.72	0/1877	0.81	0/2528
1	D	0.78	0/1992	0.84	0/2685
All	All	0.71	0/7668	0.80	0/10327

There are no bond length outliers.

There are no bond angle outliers.

There are no chirality outliers.

There are no planarity outliers.

### 5.2 Too-close contacts [i](#)

In the following table, the Non-H and H(model) columns list the number of non-hydrogen atoms and hydrogen atoms in the chain respectively. The H(added) column lists the number of hydrogen atoms added and optimized by MolProbity. The Clashes column lists the number of clashes within the asymmetric unit, whereas Symm-Clashes lists symmetry-related clashes.

Mol	Chain	Non-H	H(model)	H(added)	Clashes	Symm-Clashes
1	A	1846	0	1767	30	0
1	B	1857	0	1819	18	0
1	C	1816	0	1767	18	0
1	D	1921	0	1850	26	0
2	A	12	0	16	0	0
2	C	6	0	8	0	0
2	D	12	0	16	1	0
3	A	10	0	19	1	0
3	B	20	0	38	6	0

*Continued on next page...*

Continued from previous page...

Mol	Chain	Non-H	H(model)	H(added)	Clashes	Symm-Clashes
3	C	20	0	38	3	0
4	D	15	0	17	0	0
5	A	166	0	0	4	0
5	B	170	0	0	2	0
5	C	155	0	0	2	0
5	D	205	0	0	9	0
All	All	8231	0	7355	88	0

The all-atom clashscore is defined as the number of clashes found per 1000 atoms (including hydrogen atoms). The all-atom clashscore for this structure is 6.

The worst 5 of 88 close contacts within the same asymmetric unit are listed below, sorted by their clash magnitude.

Atom-1	Atom-2	Interatomic distance (Å)	Clash overlap (Å)
1:D:158[A]:ASN:OD1	5:D:508:HOH:O	1.55	1.24
1:C:158[A]:ASN:OD1	5:C:637:HOH:O	1.54	1.19
1:B:59[B]:MET:HG2	5:B:250:HOH:O	1.39	1.19
1:A:135[B]:ARG:HG2	1:A:135[B]:ARG:HH11	1.08	1.13
1:A:135[B]:ARG:HH11	1:A:135[B]:ARG:CG	1.76	0.98

There are no symmetry-related clashes.

## 5.3 Torsion angles [i](#)

### 5.3.1 Protein backbone [i](#)

In the following table, the Percentiles column shows the percent Ramachandran outliers of the chain as a percentile score with respect to all X-ray entries followed by that with respect to entries of similar resolution.

The Analysed column shows the number of residues for which the backbone conformation was analysed, and the total number of residues.

Mol	Chain	Analysed	Favoured	Allowed	Outliers	Percentiles	
1	A	227/235 (97%)	226 (100%)	1 (0%)	0	100	100
1	B	230/235 (98%)	228 (99%)	2 (1%)	0	100	100
1	C	225/235 (96%)	224 (100%)	1 (0%)	0	100	100
1	D	238/235 (101%)	237 (100%)	1 (0%)	0	100	100
All	All	920/940 (98%)	915 (100%)	5 (0%)	0	100	100

There are no Ramachandran outliers to report.

### 5.3.2 Protein sidechains [i](#)

In the following table, the Percentiles column shows the percent sidechain outliers of the chain as a percentile score with respect to all X-ray entries followed by that with respect to entries of similar resolution.

The Analysed column shows the number of residues for which the sidechain conformation was analysed, and the total number of residues.

Mol	Chain	Analysed	Rotameric	Outliers	Percentiles	
1	A	200/202 (99%)	195 (98%)	5 (2%)	42	18
1	B	204/202 (101%)	202 (99%)	2 (1%)	68	52
1	C	199/202 (98%)	197 (99%)	2 (1%)	68	52
1	D	212/202 (105%)	210 (99%)	2 (1%)	70	56
All	All	815/808 (101%)	804 (99%)	11 (1%)	57	42

5 of 11 residues with a non-rotameric sidechain are listed below:

Mol	Chain	Res	Type
1	C	30	LEU
1	C	193	HIS
1	D	181	LYS
1	D	141	LEU
1	A	211	GLU

Sometimes sidechains can be flipped to improve hydrogen bonding and reduce clashes. 5 of 9 such sidechains are listed below:

Mol	Chain	Res	Type
1	D	38	GLN
1	D	128	ASN
1	C	38	GLN
1	C	133	GLN
1	D	-8	HIS

### 5.3.3 RNA [i](#)

There are no RNA molecules in this entry.

## 5.4 Non-standard residues in protein, DNA, RNA chains [i](#)

4 non-standard protein/DNA/RNA residues are modelled in this entry.

In the following table, the Counts columns list the number of bonds (or angles) for which Mogul statistics could be retrieved, the number of bonds (or angles) that are observed in the model and the number of bonds (or angles) that are defined in the Chemical Component Dictionary. The Link column lists molecule types, if any, to which the group is linked. The Z score for a bond length (or angle) is the number of standard deviations the observed value is removed from the expected value. A bond length (or angle) with  $|Z| > 2$  is considered an outlier worth inspection. RMSZ is the root-mean-square of all Z scores of the bond lengths (or angles).

Mol	Type	Chain	Res	Link	Bond lengths			Bond angles		
					Counts	RMSZ	# Z  > 2	Counts	RMSZ	# Z  > 2
1	GYC	A	62	1	21,22,23	2.63	5 (23%)	26,30,32	2.08	6 (23%)
1	GYC	D	62	1	21,22,23	2.80	5 (23%)	26,30,32	1.89	6 (23%)
1	GYC	B	62	1	21,22,23	2.92	6 (28%)	26,30,32	2.25	7 (26%)
1	GYC	C	62	1	21,22,23	2.66	6 (28%)	26,30,32	1.76	7 (26%)

In the following table, the Chirals column lists the number of chiral outliers, the number of chiral centers analysed, the number of these observed in the model and the number defined in the Chemical Component Dictionary. Similar counts are reported in the Torsion and Rings columns. '-' means no outliers of that kind were identified.

Mol	Type	Chain	Res	Link	Chirals	Torsions	Rings
1	GYC	A	62	1	-	2/10/29/30	0/2/2/2
1	GYC	D	62	1	-	1/10/29/30	0/2/2/2
1	GYC	B	62	1	-	2/10/29/30	0/2/2/2
1	GYC	C	62	1	-	2/10/29/30	0/2/2/2

The worst 5 of 22 bond length outliers are listed below:

Mol	Chain	Res	Type	Atoms	Z	Observed(Å)	Ideal(Å)
1	B	62	GYC	CA2-C2	-8.22	1.39	1.48
1	D	62	GYC	CB2-CA2	7.71	1.42	1.35
1	A	62	GYC	CA2-C2	-7.20	1.40	1.48
1	C	62	GYC	CB2-CA2	6.56	1.41	1.35
1	B	62	GYC	CB2-CA2	6.47	1.41	1.35

The worst 5 of 26 bond angle outliers are listed below:

Mol	Chain	Res	Type	Atoms	Z	Observed(°)	Ideal(°)
1	A	62	GYC	CA2-C2-N3	5.33	107.97	103.50

*Continued on next page...*

*Continued from previous page...*

Mol	Chain	Res	Type	Atoms	Z	Observed(°)	Ideal(°)
1	B	62	GYC	CA2-C2-N3	5.31	107.96	103.50
1	B	62	GYC	O2-C2-CA2	-5.23	127.68	131.02
1	C	62	GYC	CA2-C2-N3	5.08	107.77	103.50
1	A	62	GYC	CG2-CB2-CA2	-4.99	123.93	129.87

There are no chirality outliers.

5 of 7 torsion outliers are listed below:

Mol	Chain	Res	Type	Atoms
1	A	62	GYC	C3-CA3-N3-C2
1	B	62	GYC	C3-CA3-N3-C2
1	C	62	GYC	C3-CA3-N3-C2
1	D	62	GYC	C3-CA3-N3-C2
1	A	62	GYC	N2-CA2-CB2-CG2

There are no ring outliers.

4 monomers are involved in 8 short contacts:

Mol	Chain	Res	Type	Clashes	Symm-Clashes
1	A	62	GYC	3	0
1	D	62	GYC	1	0
1	B	62	GYC	3	0
1	C	62	GYC	1	0

## 5.5 Carbohydrates [i](#)

There are no oligosaccharides in this entry.

## 5.6 Ligand geometry [i](#)

11 ligands are modelled in this entry.

In the following table, the Counts columns list the number of bonds (or angles) for which Mogul statistics could be retrieved, the number of bonds (or angles) that are observed in the model and the number of bonds (or angles) that are defined in the Chemical Component Dictionary. The Link column lists molecule types, if any, to which the group is linked. The Z score for a bond length (or angle) is the number of standard deviations the observed value is removed from the expected value. A bond length (or angle) with  $|Z| > 2$  is considered an outlier worth inspection. RMSZ is the root-mean-square of all Z scores of the bond lengths (or angles).

Mol	Type	Chain	Res	Link	Bond lengths			Bond angles		
					Counts	RMSZ	# Z  > 2	Counts	RMSZ	# Z  > 2
2	GOL	D	227	-	5,5,5	0.45	0	5,5,5	0.35	0
2	GOL	A	225	-	5,5,5	0.34	0	5,5,5	0.45	0
3	SPD	C	226	-	9,9,9	0.29	0	8,8,8	0.67	0
4	EPE	D	225	-	15,15,15	1.04	1 (6%)	19,20,20	1.92	5 (26%)
2	GOL	A	226	-	5,5,5	0.39	0	5,5,5	0.25	0
3	SPD	A	227	-	9,9,9	0.33	0	8,8,8	0.69	0
2	GOL	C	225	-	5,5,5	0.32	0	5,5,5	0.35	0
3	SPD	B	225	-	9,9,9	0.28	0	8,8,8	0.94	0
2	GOL	D	226	-	5,5,5	0.48	0	5,5,5	0.42	0
3	SPD	C	227	-	9,9,9	0.28	0	8,8,8	0.60	0
3	SPD	B	226	-	9,9,9	0.27	0	8,8,8	0.77	0

In the following table, the Chirals column lists the number of chiral outliers, the number of chiral centers analysed, the number of these observed in the model and the number defined in the Chemical Component Dictionary. Similar counts are reported in the Torsion and Rings columns. '2' means no outliers of that kind were identified.

Mol	Type	Chain	Res	Link	Chirals	Torsions	Rings
2	GOL	D	227	-	-	4/4/4/4	-
2	GOL	A	225	-	-	4/4/4/4	-
3	SPD	C	226	-	-	5/7/7/7	-
4	EPE	D	225	-	-	6/9/19/19	0/1/1/1
2	GOL	A	226	-	-	2/4/4/4	-
3	SPD	A	227	-	-	5/7/7/7	-
2	GOL	C	225	-	-	2/4/4/4	-
3	SPD	B	225	-	-	4/7/7/7	-
2	GOL	D	226	-	-	2/4/4/4	-
3	SPD	C	227	-	-	3/7/7/7	-
3	SPD	B	226	-	-	4/7/7/7	-

All (1) bond length outliers are listed below:

Mol	Chain	Res	Type	Atoms	Z	Observed(Å)	Ideal(Å)
4	D	225	EPE	C10-S	3.42	1.82	1.77

All (5) bond angle outliers are listed below:

Mol	Chain	Res	Type	Atoms	Z	Observed(°)	Ideal(°)
4	D	225	EPE	C5-N4-C3	4.88	119.36	108.84

*Continued on next page...*

*Continued from previous page...*

Mol	Chain	Res	Type	Atoms	Z	Observed(°)	Ideal(°)
4	D	225	EPE	C7-N4-C3	3.56	120.72	111.24
4	D	225	EPE	C7-N4-C5	3.26	119.92	111.24
4	D	225	EPE	C6-N1-C2	3.02	115.35	108.84
4	D	225	EPE	O2S-S-C10	2.79	110.95	106.73

There are no chirality outliers.

5 of 41 torsion outliers are listed below:

Mol	Chain	Res	Type	Atoms
2	C	225	GOL	O1-C1-C2-C3
2	D	226	GOL	O1-C1-C2-C3
2	D	227	GOL	O1-C1-C2-C3
2	D	227	GOL	C1-C2-C3-O3
3	A	227	SPD	N6-C7-C8-C9

There are no ring outliers.

5 monomers are involved in 11 short contacts:

Mol	Chain	Res	Type	Clashes	Symm-Clashes
2	D	227	GOL	1	0
3	C	226	SPD	2	0
3	A	227	SPD	1	0
3	B	225	SPD	6	0
3	C	227	SPD	1	0

## 5.7 Other polymers [i](#)

There are no such residues in this entry.

## 5.8 Polymer linkage issues [i](#)

There are no chain breaks in this entry.

## 6 Fit of model and data [i](#)

### 6.1 Protein, DNA and RNA chains [i](#)

In the following table, the column labelled ‘#RSRZ> 2’ contains the number (and percentage) of RSRZ outliers, followed by percent RSRZ outliers for the chain as percentile scores relative to all X-ray entries and entries of similar resolution. The OWAB column contains the minimum, median, 95<sup>th</sup> percentile and maximum values of the occupancy-weighted average B-factor per residue. The column labelled ‘Q< 0.9’ lists the number of (and percentage) of residues with an average occupancy less than 0.9.

Mol	Chain	Analysed	<RSRZ>	#RSRZ>2	OWAB(Å <sup>2</sup> )	Q<0.9
1	A	215/235 (91%)	0.67	16 (7%) 20 23	9, 20, 27, 47	17 (7%)
1	B	214/235 (91%)	0.08	3 (1%) 73 78	6, 19, 26, 40	19 (8%)
1	C	213/235 (90%)	0.09	4 (1%) 66 71	7, 16, 24, 32	17 (7%)
1	D	224/235 (95%)	0.00	6 (2%) 56 61	7, 16, 25, 36	19 (8%)
All	All	866/940 (92%)	0.21	29 (3%) 49 53	6, 18, 26, 47	72 (8%)

The worst 5 of 29 RSRZ outliers are listed below:

Mol	Chain	Res	Type	RSRZ
1	C	202	LYS	4.5
1	A	1	MET	4.5
1	A	113	CYS	3.9
1	B	2	SER	3.9
1	D	165	GLY	3.5

### 6.2 Non-standard residues in protein, DNA, RNA chains [i](#)

In the following table, the Atoms column lists the number of modelled atoms in the group and the number defined in the chemical component dictionary. The B-factors column lists the minimum, median, 95<sup>th</sup> percentile and maximum values of B factors of atoms in the group. The column labelled ‘Q< 0.9’ lists the number of atoms with occupancy less than 0.9.

Mol	Type	Chain	Res	Atoms	RSCC	RSR	B-factors(Å <sup>2</sup> )	Q<0.9
1	GYC	A	62	21/22	0.93	0.07	19,22,27,31	0
1	GYC	B	62	21/22	0.94	0.07	17,20,24,29	0
1	GYC	C	62	21/22	0.95	0.07	15,19,22,27	0
1	GYC	D	62	21/22	0.96	0.06	15,17,22,25	0

### 6.3 Carbohydrates [i](#)

There are no oligosaccharides in this entry.

### 6.4 Ligands [i](#)

In the following table, the Atoms column lists the number of modelled atoms in the group and the number defined in the chemical component dictionary. The B-factors column lists the minimum, median, 95<sup>th</sup> percentile and maximum values of B factors of atoms in the group. The column labelled 'Q< 0.9' lists the number of atoms with occupancy less than 0.9.

Mol	Type	Chain	Res	Atoms	RSCC	RSR	B-factors(Å <sup>2</sup> )	Q<0.9
2	GOL	A	226	6/6	0.74	0.11	64,64,64,64	0
4	EPE	D	225	15/15	0.75	0.15	55,67,69,70	0
3	SPD	C	227	10/10	0.77	0.15	39,55,57,57	0
3	SPD	A	227	10/10	0.79	0.13	47,51,57,57	0
2	GOL	C	225	6/6	0.82	0.13	52,55,56,58	0
3	SPD	B	225	10/10	0.83	0.15	50,56,60,61	0
3	SPD	B	226	10/10	0.84	0.13	50,55,56,56	0
2	GOL	D	227	6/6	0.85	0.18	55,58,59,59	0
2	GOL	D	226	6/6	0.87	0.13	59,61,62,63	0
3	SPD	C	226	10/10	0.88	0.17	59,61,63,63	0
2	GOL	A	225	6/6	0.89	0.12	79,79,79,80	0

### 6.5 Other polymers [i](#)

There are no such residues in this entry.