



wwPDB X-ray Structure Validation Summary Report ⓘ

Mar 5, 2026 – 09:36 PM UTC

PDB ID : 4LSU / pdb_00004lsu
Title : Crystal structure of broadly and potently neutralizing antibody VRC-PG20 in complex with HIV-1 clade A/E 93TH057 gp120
Authors : Zhou, T.; Moquin, S.; Kwong, P.D.
Deposited on : 2013-07-23
Resolution : 2.30 Å (reported)

This is a wwPDB X-ray Structure Validation Summary Report for a publicly released PDB entry.

We welcome your comments at validation@mail.wwpdb.org

A user guide is available at

<https://www.wwpdb.org/validation/2017/XrayValidationReportHelp>

with specific help available everywhere you see the ⓘ symbol.

The types of validation reports are described at

<http://www.wwpdb.org/validation/2017/FAQs#types>.

The following versions of software and data (see [references ⓘ](#)) were used in the production of this report:

MolProbity : 4-5-2 with Phenix2.0
Mogul : 2022.3.0, CSD as543be (2022)
Xtriage (Phenix) : 2.0
EDS : 3.0
Percentile statistics : 20250101.v01 (using entries in the PDB archive January 1st 2025)
CCP4 : 9.0.010 (Gargrove)
Density-Fitness : 1.0.12
Ideal geometry (proteins) : Engh & Huber (2001)
Ideal geometry (DNA, RNA) : Parkinson et al. (1996)
Validation Pipeline (wwPDB-VP) : 2.49

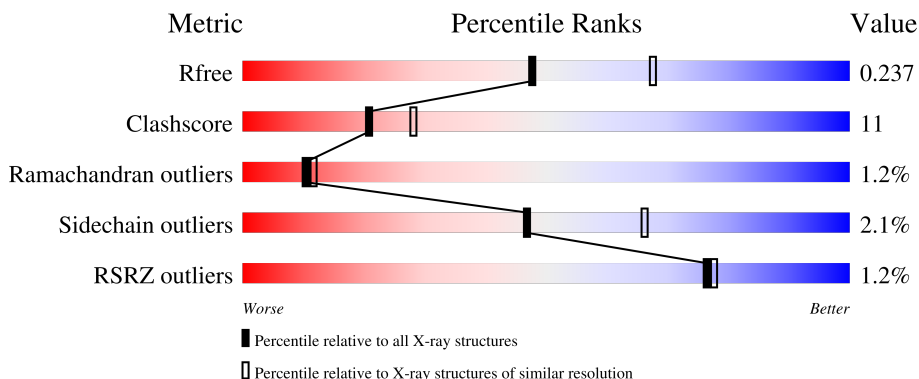
1 Overall quality at a glance

The following experimental techniques were used to determine the structure:

X-RAY DIFFRACTION

The reported resolution of this entry is 2.30 Å.

Percentile scores (ranging between 0-100) for global validation metrics of the entry are shown in the following graphic. The table shows the number of entries on which the scores are based.



Metric	Whole archive (#Entries)	Similar resolution (#Entries, resolution range(Å))
R_{free}	180053	6319 (2.30-2.30)
Clashscore	190562	6919 (2.30-2.30)
Ramachandran outliers	187476	6854 (2.30-2.30)
Sidechain outliers	187428	6854 (2.30-2.30)
RSRZ outliers	180081	6325 (2.30-2.30)

The table below summarises the geometric issues observed across the polymeric chains and their fit to the electron density. The red, orange, yellow and green segments of the lower bar indicate the fraction of residues that contain outliers for ≥ 3 , 2, 1 and 0 types of geometric quality criteria respectively. A grey segment represents the fraction of residues that are not modelled. The numeric value for each fraction is indicated below the corresponding segment, with a dot representing fractions $\leq 5\%$. The upper red bar (where present) indicates the fraction of residues that have poor fit to the electron density. The numeric value is given above the bar.

Mol	Chain	Length	Quality of chain
1	G	353	 79% 18% ..
2	H	227	 77% 19% ..
3	L	204	 80% 18% .

The following table lists non-polymeric compounds, carbohydrate monomers and non-standard residues in protein, DNA, RNA chains that are outliers for geometric or electron-density-fit criteria:

Mol	Type	Chain	Res	Chirality	Geometry	Clashes	Electron density
6	EDO	G	513	-	-	X	-

2 Entry composition [i](#)

There are 8 unique types of molecules in this entry. The entry contains 6365 atoms, of which 0 are hydrogens and 0 are deuteriums.

In the tables below, the ZeroOcc column contains the number of atoms modelled with zero occupancy, the AltConf column contains the number of residues with at least one atom in alternate conformation and the Trace column contains the number of residues modelled with at most 2 atoms.

- Molecule 1 is a protein called HIV-1 CLADE A/E STRAIN 93TH057 GP120.

Mol	Chain	Residues	Atoms					ZeroOcc	AltConf	Trace
			Total	C	N	O	S			
1	G	346	2705	1696	470	516	23	0	0	0

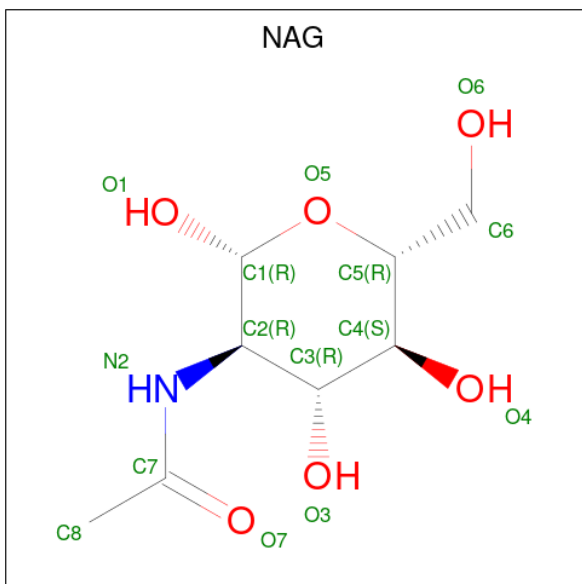
- Molecule 2 is a protein called HEAVY CHAIN OF ANTIBODY VRC-PG20.

Mol	Chain	Residues	Atoms					ZeroOcc	AltConf	Trace
			Total	C	N	O	S			
2	H	222	1742	1103	305	323	11	0	1	0

- Molecule 3 is a protein called LIGHT CHAIN OF ANTIBODY VRC-PG20.

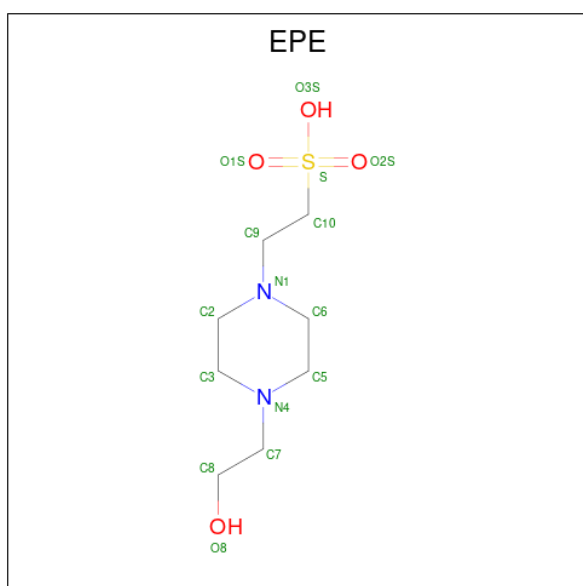
Mol	Chain	Residues	Atoms					ZeroOcc	AltConf	Trace
			Total	C	N	O	S			
3	L	203	1508	943	249	311	5	0	0	0

- Molecule 4 is 2-acetamido-2-deoxy-beta-D-glucopyranose (CCD ID: NAG) (formula: $C_8H_{15}NO_6$).



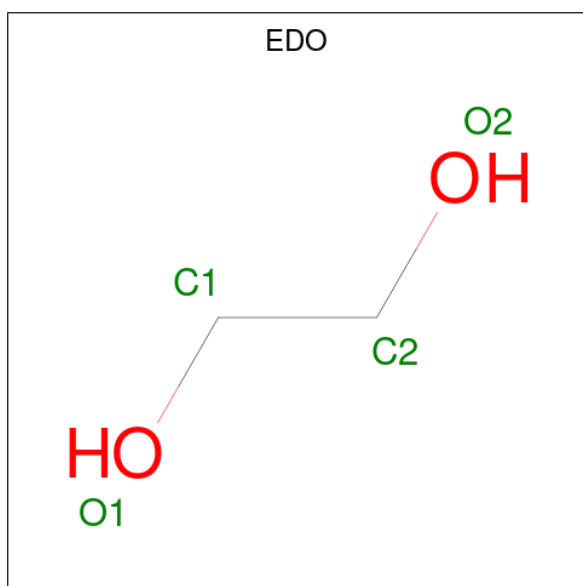
Mol	Chain	Residues	Atoms				ZeroOcc	AltConf
4	G	1	Total	C	N	O	0	0
			14	8	1	5		
4	G	1	Total	C	N	O	0	0
			14	8	1	5		
4	G	1	Total	C	N	O	0	0
			14	8	1	5		
4	G	1	Total	C	N	O	0	0
			14	8	1	5		
4	G	1	Total	C	N	O	0	0
			14	8	1	5		
4	G	1	Total	C	N	O	0	0
			14	8	1	5		
4	G	1	Total	C	N	O	0	0
			14	8	1	5		
4	G	1	Total	C	N	O	0	0
			14	8	1	5		

- Molecule 5 is 4-(2-HYDROXYETHYL)-1-PIPERAZINE ETHANESULFONIC ACID (CCD ID: EPE) (formula: $C_8H_{18}N_2O_4S$).



Mol	Chain	Residues	Atoms					ZeroOcc	AltConf
5	G	1	Total	C	N	O	S	0	0
			15	8	2	4	1		

- Molecule 6 is 1,2-ETHANEDIOL (CCD ID: EDO) (formula: $C_2H_6O_2$).



Mol	Chain	Residues	Atoms	ZeroOcc	AltConf
6	G	1	Total C O 4 2 2	0	0
6	G	1	Total C O 4 2 2	0	0
6	H	1	Total C O 4 2 2	0	0
6	H	1	Total C O 4 2 2	0	0
6	L	1	Total C O 4 2 2	0	0

- Molecule 7 is CHLORIDE ION (CCD ID: CL) (formula: Cl).

Mol	Chain	Residues	Atoms	ZeroOcc	AltConf
7	H	1	Total Cl 1 1	0	0

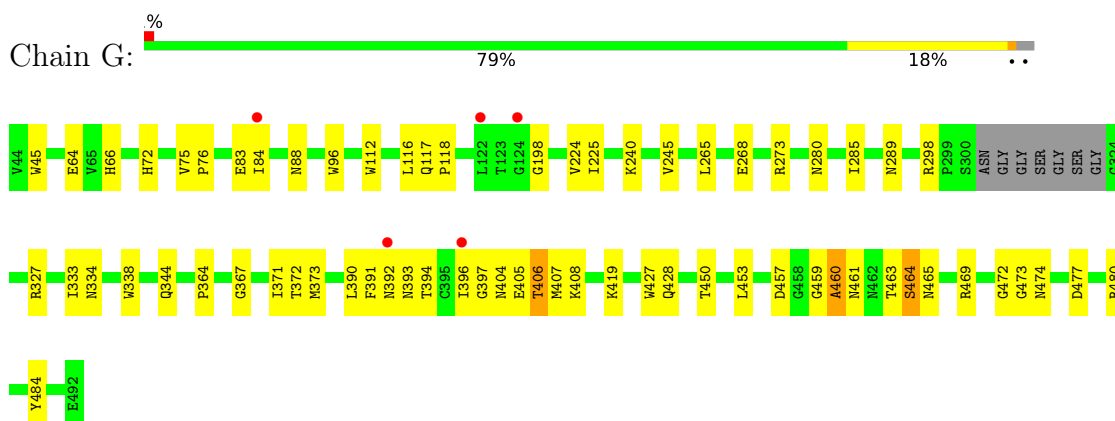
- Molecule 8 is water.

Mol	Chain	Residues	Atoms	ZeroOcc	AltConf
8	G	93	Total O 93 93	0	0
8	H	84	Total O 84 84	0	0
8	L	57	Total O 57 57	0	0

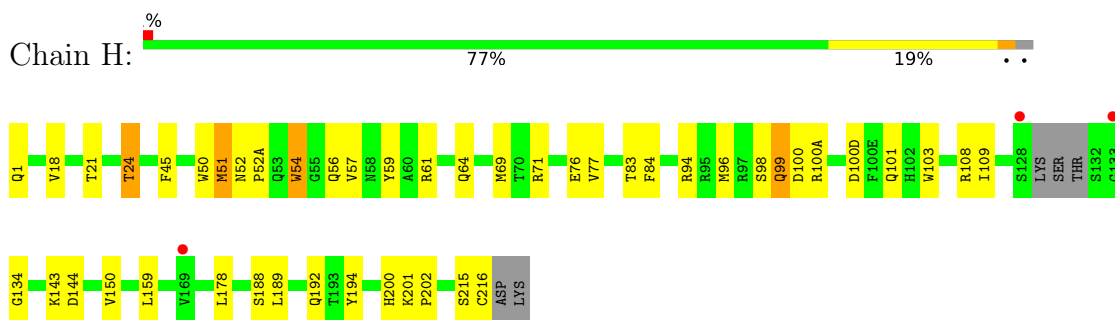
3 Residue-property plots [i](#)

These plots are drawn for all protein, RNA, DNA and oligosaccharide chains in the entry. The first graphic for a chain summarises the proportions of the various outlier classes displayed in the second graphic. The second graphic shows the sequence view annotated by issues in geometry and electron density. Residues are color-coded according to the number of geometric quality criteria for which they contain at least one outlier: green = 0, yellow = 1, orange = 2 and red = 3 or more. A red dot above a residue indicates a poor fit to the electron density ($RSRZ > 2$). Stretches of 2 or more consecutive residues without any outlier are shown as a green connector. Residues present in the sample, but not in the model, are shown in grey.

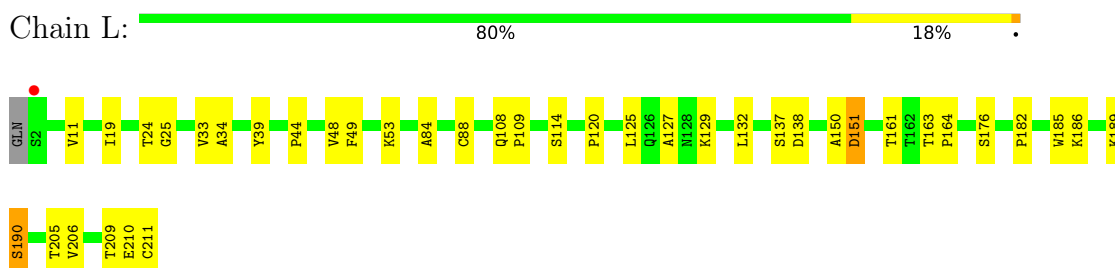
- Molecule 1: HIV-1 CLADE A/E STRAIN 93TH057 GP120



- Molecule 2: HEAVY CHAIN OF ANTIBODY VRC-PG20



- Molecule 3: LIGHT CHAIN OF ANTIBODY VRC-PG20



4 Data and refinement statistics

Property	Value	Source
Space group	C 1 2 1	Depositor
Cell constants a, b, c, α , β , γ	164.28Å 66.31Å 95.11Å 90.00° 108.34° 90.00°	Depositor
Resolution (Å)	45.14 – 2.30 45.14 – 2.30	Depositor EDS
% Data completeness (in resolution range)	89.7 (45.14-2.30) 90.8 (45.14-2.30)	Depositor EDS
R_{merge}	0.10	Depositor
R_{sym}	0.09	Depositor
$\langle I/\sigma(I) \rangle$ ¹	2.03 (at 2.29Å)	Xtrriage
Refinement program	PHENIX dev_998	Depositor
R, R_{free}	0.179 , 0.234 0.182 , 0.237	Depositor DCC
R_{free} test set	1975 reflections (4.47%)	wwPDB-VP
Wilson B-factor (Å ²)	51.9	Xtrriage
Anisotropy	0.244	Xtrriage
Bulk solvent k_{sol} (e/Å ³), B_{sol} (Å ²)	0.31 , 62.9	EDS
L-test for twinning ²	$\langle L \rangle = 0.49$, $\langle L^2 \rangle = 0.32$	Xtrriage
Estimated twinning fraction	No twinning to report.	Xtrriage
F_o, F_c correlation	0.97	EDS
Total number of atoms	6365	wwPDB-VP
Average B, all atoms (Å ²)	77.0	wwPDB-VP

Xtrriage's analysis on translational NCS is as follows: *The largest off-origin peak in the Patterson function is 4.75% of the height of the origin peak. No significant pseudotranslation is detected.*

¹Intensities estimated from amplitudes.

²Theoretical values of $\langle |L| \rangle$, $\langle L^2 \rangle$ for acentric reflections are 0.5, 0.333 respectively for untwinned datasets, and 0.375, 0.2 for perfectly twinned datasets.

5 Model quality [i](#)

5.1 Standard geometry [i](#)

Bond lengths and bond angles in the following residue types are not validated in this section: PCA, CL, EPE, NAG, EDO

The Z score for a bond length (or angle) is the number of standard deviations the observed value is removed from the expected value. A bond length (or angle) with $|Z| > 5$ is considered an outlier worth inspection. RMSZ is the root-mean-square of all Z scores of the bond lengths (or angles).

Mol	Chain	Bond lengths		Bond angles	
		RMSZ	# Z >5	RMSZ	# Z >5
1	G	0.53	0/2762	0.83	2/3749 (0.1%)
2	H	0.51	0/1786	0.76	0/2429
3	L	0.46	0/1545	0.77	0/2107
All	All	0.50	0/6093	0.79	2/8285 (0.0%)

There are no bond length outliers.

All (2) bond angle outliers are listed below:

Mol	Chain	Res	Type	Atoms	Z	Observed(°)	Ideal(°)
1	G	408	LYS	CA-C-N	8.36	139.48	121.18
1	G	408	LYS	C-N-CA	8.36	139.48	121.18

There are no chirality outliers.

There are no planarity outliers.

5.2 Too-close contacts [i](#)

In the following table, the Non-H and H(model) columns list the number of non-hydrogen atoms and hydrogen atoms in the chain respectively. The H(added) column lists the number of hydrogen atoms added and optimized by MolProbity. The Clashes column lists the number of clashes within the asymmetric unit, whereas Symm-Clashes lists symmetry-related clashes.

Mol	Chain	Non-H	H(model)	H(added)	Clashes	Symm-Clashes
1	G	2705	0	2636	64	0
2	H	1742	0	1687	47	0
3	L	1508	0	1450	27	0
4	G	140	0	130	2	0
5	G	15	0	17	1	0
6	G	8	0	12	6	0

Continued on next page...

Continued from previous page...

Mol	Chain	Non-H	H(model)	H(added)	Clashes	Symm-Clashes
6	H	8	0	12	1	0
6	L	4	0	6	0	0
7	H	1	0	0	1	0
8	G	93	0	0	11	0
8	H	84	0	0	7	0
8	L	57	0	0	1	0
All	All	6365	0	5950	134	0

The all-atom clashscore is defined as the number of clashes found per 1000 atoms (including hydrogen atoms). The all-atom clashscore for this structure is 11.

The worst 5 of 134 close contacts within the same asymmetric unit are listed below, sorted by their clash magnitude.

Atom-1	Atom-2	Interatomic distance (Å)	Clash overlap (Å)
7:H:303:CL:CL	8:H:466:HOH:O	2.22	0.93
2:H:216:CYS:SG	3:L:211:CYS:N	2.45	0.89
1:G:88:ASN:ND2	8:G:631:HOH:O	2.08	0.87
2:H:100(A):ARG:NH1	8:H:464:HOH:O	2.18	0.77
1:G:240:LYS:NZ	8:G:608:HOH:O	2.17	0.76

There are no symmetry-related clashes.

5.3 Torsion angles [i](#)

5.3.1 Protein backbone [i](#)

In the following table, the Percentiles column shows the percent Ramachandran outliers of the chain as a percentile score with respect to all X-ray entries followed by that with respect to entries of similar resolution.

The Analysed column shows the number of residues for which the backbone conformation was analysed, and the total number of residues.

Mol	Chain	Analysed	Favoured	Allowed	Outliers	Percentiles	
1	G	342/353 (97%)	320 (94%)	18 (5%)	4 (1%)	10	12
2	H	219/227 (96%)	205 (94%)	11 (5%)	3 (1%)	9	9
3	L	201/204 (98%)	185 (92%)	14 (7%)	2 (1%)	12	15
All	All	762/784 (97%)	710 (93%)	43 (6%)	9 (1%)	10	12

5 of 9 Ramachandran outliers are listed below:

Mol	Chain	Res	Type
1	G	460	ALA
1	G	464	SER
2	H	99	GLN
1	G	406	THR
2	H	144	ASP

5.3.2 Protein sidechains [i](#)

In the following table, the Percentiles column shows the percent sidechain outliers of the chain as a percentile score with respect to all X-ray entries followed by that with respect to entries of similar resolution.

The Analysed column shows the number of residues for which the sidechain conformation was analysed, and the total number of residues.

Mol	Chain	Analysed	Rotameric	Outliers	Percentiles
1	G	308/311 (99%)	306 (99%)	2 (1%)	78 89
2	H	192/196 (98%)	184 (96%)	8 (4%)	26 40
3	L	170/171 (99%)	166 (98%)	4 (2%)	43 62
All	All	670/678 (99%)	656 (98%)	14 (2%)	47 66

5 of 14 residues with a non-rotameric sidechain are listed below:

Mol	Chain	Res	Type
2	H	77	VAL
2	H	94	ARG
3	L	186	LYS
3	L	48	VAL
3	L	114	SER

Sometimes sidechains can be flipped to improve hydrogen bonding and reduce clashes. 5 of 8 such sidechains are listed below:

Mol	Chain	Res	Type
3	L	197	HIS
3	L	184	GLN
3	L	37	GLN
2	H	102	HIS
3	L	38	GLN

5.3.3 RNA [i](#)

There are no RNA molecules in this entry.

5.4 Non-standard residues in protein, DNA, RNA chains [i](#)

1 non-standard protein/DNA/RNA residue is modelled in this entry.

In the following table, the Counts columns list the number of bonds (or angles) for which Mogul statistics could be retrieved, the number of bonds (or angles) that are observed in the model and the number of bonds (or angles) that are defined in the Chemical Component Dictionary. The Link column lists molecule types, if any, to which the group is linked. The Z score for a bond length (or angle) is the number of standard deviations the observed value is removed from the expected value. A bond length (or angle) with $|Z| > 2$ is considered an outlier worth inspection. RMSZ is the root-mean-square of all Z scores of the bond lengths (or angles).

Mol	Type	Chain	Res	Link	Bond lengths			Bond angles		
					Counts	RMSZ	# Z > 2	Counts	RMSZ	# Z > 2
2	PCA	H	1	2	7,8,9	2.30	2 (28%)	9,10,12	2.36	5 (55%)

In the following table, the Chirals column lists the number of chiral outliers, the number of chiral centers analysed, the number of these observed in the model and the number defined in the Chemical Component Dictionary. Similar counts are reported in the Torsion and Rings columns. '-' means no outliers of that kind were identified.

Mol	Type	Chain	Res	Link	Chirals	Torsions	Rings
2	PCA	H	1	2	-	0/0/11/13	0/1/1/1

All (2) bond length outliers are listed below:

Mol	Chain	Res	Type	Atoms	Z	Observed(Å)	Ideal(Å)
2	H	1	PCA	CD-N	5.19	1.47	1.34
2	H	1	PCA	CA-N	3.06	1.50	1.46

All (5) bond angle outliers are listed below:

Mol	Chain	Res	Type	Atoms	Z	Observed(°)	Ideal(°)
2	H	1	PCA	CB-CA-C	-3.67	107.62	112.66
2	H	1	PCA	CA-N-CD	-3.13	102.86	113.58
2	H	1	PCA	OE-CD-CG	-3.01	121.35	126.72
2	H	1	PCA	CB-CA-N	3.00	111.49	103.24
2	H	1	PCA	CG-CD-N	2.66	114.90	108.39

There are no chirality outliers.

There are no torsion outliers.

There are no ring outliers.

No monomer is involved in short contacts.

5.5 Carbohydrates [i](#)

There are no oligosaccharides in this entry.

5.6 Ligand geometry [i](#)

Of 17 ligands modelled in this entry, 1 is monoatomic - leaving 16 for Mogul analysis.

In the following table, the Counts columns list the number of bonds (or angles) for which Mogul statistics could be retrieved, the number of bonds (or angles) that are observed in the model and the number of bonds (or angles) that are defined in the Chemical Component Dictionary. The Link column lists molecule types, if any, to which the group is linked. The Z score for a bond length (or angle) is the number of standard deviations the observed value is removed from the expected value. A bond length (or angle) with $|Z| > 2$ is considered an outlier worth inspection. RMSZ is the root-mean-square of all Z scores of the bond lengths (or angles).

Mol	Type	Chain	Res	Link	Bond lengths			Bond angles		
					Counts	RMSZ	$\# Z > 2$	Counts	RMSZ	$\# Z > 2$
4	NAG	G	507	1	14,14,15	0.48	0	17,19,21	0.86	0
4	NAG	G	505	1	14,14,15	0.51	0	17,19,21	1.27	2 (11%)
6	EDO	H	302	-	3,3,3	0.48	0	2,2,2	0.21	0
4	NAG	G	509	1	14,14,15	0.49	0	17,19,21	1.66	2 (11%)
6	EDO	G	513	-	3,3,3	0.47	0	2,2,2	0.16	0
4	NAG	G	504	1	14,14,15	0.64	0	17,19,21	1.16	1 (5%)
4	NAG	G	508	1	14,14,15	0.63	0	17,19,21	0.78	0
4	NAG	G	510	1	14,14,15	0.55	0	17,19,21	1.06	1 (5%)
4	NAG	G	502	1	14,14,15	0.53	0	17,19,21	1.81	2 (11%)
6	EDO	G	512	-	3,3,3	0.33	0	2,2,2	0.60	0
4	NAG	G	501	1	14,14,15	0.53	0	17,19,21	0.87	1 (5%)
5	EPE	G	511	-	15,15,15	0.64	1 (6%)	19,20,20	1.93	6 (31%)
4	NAG	G	503	1	14,14,15	0.49	0	17,19,21	1.45	2 (11%)
6	EDO	L	301	-	3,3,3	0.42	0	2,2,2	0.30	0
4	NAG	G	506	1	14,14,15	0.41	0	17,19,21	1.74	3 (17%)
6	EDO	H	301	-	3,3,3	0.52	0	2,2,2	0.23	0

In the following table, the Chirals column lists the number of chiral outliers, the number of chiral centers analysed, the number of these observed in the model and the number defined in the

Chemical Component Dictionary. Similar counts are reported in the Torsion and Rings columns. '-' means no outliers of that kind were identified.

Mol	Type	Chain	Res	Link	Chirals	Torsions	Rings
4	NAG	G	507	1	-	2/6/23/26	0/1/1/1
4	NAG	G	505	1	-	3/6/23/26	0/1/1/1
6	EDO	H	302	-	-	0/1/1/1	-
4	NAG	G	509	1	-	3/6/23/26	0/1/1/1
6	EDO	G	513	-	-	0/1/1/1	-
4	NAG	G	504	1	-	5/6/23/26	0/1/1/1
4	NAG	G	508	1	-	2/6/23/26	0/1/1/1
4	NAG	G	510	1	-	0/6/23/26	0/1/1/1
4	NAG	G	502	1	-	1/6/23/26	0/1/1/1
6	EDO	G	512	-	-	1/1/1/1	-
4	NAG	G	501	1	-	0/6/23/26	0/1/1/1
5	EPE	G	511	-	-	1/9/19/19	0/1/1/1
4	NAG	G	503	1	-	0/6/23/26	0/1/1/1
6	EDO	L	301	-	-	0/1/1/1	-
4	NAG	G	506	1	-	0/6/23/26	0/1/1/1
6	EDO	H	301	-	-	1/1/1/1	-

All (1) bond length outliers are listed below:

Mol	Chain	Res	Type	Atoms	Z	Observed(Å)	Ideal(Å)
5	G	511	EPE	C10-S	2.08	1.80	1.77

The worst 5 of 20 bond angle outliers are listed below:

Mol	Chain	Res	Type	Atoms	Z	Observed(°)	Ideal(°)
4	G	506	NAG	C1-O5-C5	5.83	120.00	112.19
4	G	509	NAG	C1-O5-C5	5.07	118.98	112.19
4	G	502	NAG	C1-O5-C5	5.04	118.94	112.19
4	G	502	NAG	O5-C1-C2	4.79	118.70	111.29
5	G	511	EPE	O2S-S-C10	4.69	113.82	106.73

There are no chirality outliers.

5 of 19 torsion outliers are listed below:

Mol	Chain	Res	Type	Atoms
4	G	509	NAG	C3-C2-N2-C7
4	G	504	NAG	C8-C7-N2-C2
4	G	504	NAG	O7-C7-N2-C2
5	G	511	EPE	C8-C7-N4-C5

Continued on next page...

Continued from previous page...

Mol	Chain	Res	Type	Atoms
4	G	504	NAG	O5-C5-C6-O6

There are no ring outliers.

4 monomers are involved in 10 short contacts:

Mol	Chain	Res	Type	Clashes	Symm-Clashes
4	G	505	NAG	2	0
6	H	302	EDO	1	0
6	G	513	EDO	6	0
5	G	511	EPE	1	0

5.7 Other polymers [i](#)

There are no such residues in this entry.

5.8 Polymer linkage issues [i](#)

There are no chain breaks in this entry.

6 Fit of model and data [i](#)

6.1 Protein, DNA and RNA chains [i](#)

In the following table, the column labelled ‘#RSRZ> 2’ contains the number (and percentage) of RSRZ outliers, followed by percent RSRZ outliers for the chain as percentile scores relative to all X-ray entries and entries of similar resolution. The OWAB column contains the minimum, median, 95th percentile and maximum values of the occupancy-weighted average B-factor per residue. The column labelled ‘Q< 0.9’ lists the number of (and percentage) of residues with an average occupancy less than 0.9.

Mol	Chain	Analysed	<RSRZ>	#RSRZ>2	OWAB(Å ²)	Q<0.9
1	G	346/353 (98%)	0.10	5 (1%) 73 75	39, 78, 133, 191	0
2	H	221/227 (97%)	-0.02	3 (1%) 73 75	27, 65, 119, 165	1 (0%)
3	L	203/204 (99%)	-0.01	1 (0%) 87 87	39, 71, 132, 183	0
All	All	770/784 (98%)	0.04	9 (1%) 76 77	27, 73, 129, 191	1 (0%)

The worst 5 of 9 RSRZ outliers are listed below:

Mol	Chain	Res	Type	RSRZ
2	H	128	SER	3.3
2	H	169	VAL	2.6
1	G	396	ILE	2.6
3	L	2	SER	2.5
2	H	133	GLY	2.4

6.2 Non-standard residues in protein, DNA, RNA chains [i](#)

In the following table, the Atoms column lists the number of modelled atoms in the group and the number defined in the chemical component dictionary. The B-factors column lists the minimum, median, 95th percentile and maximum values of B factors of atoms in the group. The column labelled ‘Q< 0.9’ lists the number of atoms with occupancy less than 0.9.

Mol	Type	Chain	Res	Atoms	RSCC	RSR	B-factors(Å ²)	Q<0.9
2	PCA	H	1	8/9	0.93	0.09	57,65,76,84	0

6.3 Carbohydrates [i](#)

There are no oligosaccharides in this entry.

6.4 Ligands [i](#)

In the following table, the Atoms column lists the number of modelled atoms in the group and the number defined in the chemical component dictionary. The B-factors column lists the minimum, median, 95th percentile and maximum values of B factors of atoms in the group. The column labelled 'Q<0.9' lists the number of atoms with occupancy less than 0.9.

Mol	Type	Chain	Res	Atoms	RSCC	RSR	B-factors(Å ²)	Q<0.9
4	NAG	G	510	14/15	0.52	0.13	70,114,133,137	0
4	NAG	G	508	14/15	0.68	0.15	100,121,151,155	0
4	NAG	G	502	14/15	0.72	0.10	89,120,127,130	0
4	NAG	G	507	14/15	0.72	0.10	95,118,122,128	0
4	NAG	G	506	14/15	0.75	0.10	81,95,108,112	0
4	NAG	G	504	14/15	0.80	0.12	87,97,108,109	0
4	NAG	G	505	14/15	0.81	0.11	93,99,113,126	0
6	EDO	H	302	4/4	0.85	0.17	74,86,93,96	0
6	EDO	G	513	4/4	0.88	0.15	76,85,86,89	0
4	NAG	G	509	14/15	0.91	0.10	55,75,91,112	0
6	EDO	H	301	4/4	0.91	0.13	71,72,80,84	0
4	NAG	G	501	14/15	0.91	0.09	58,76,86,86	0
4	NAG	G	503	14/15	0.92	0.09	58,69,85,86	0
5	EPE	G	511	15/15	0.95	0.10	37,61,78,79	0
6	EDO	L	301	4/4	0.95	0.09	55,64,67,77	0
6	EDO	G	512	4/4	0.96	0.09	47,54,58,72	0
7	CL	H	303	1/1	0.96	0.09	108,108,108,108	0

6.5 Other polymers [i](#)

There are no such residues in this entry.