



wwPDB X-ray Structure Validation Summary Report ⓘ

Mar 14, 2026 – 09:32 AM UTC

PDB ID : 1LYB / pdb_00001lyb
Title : CRYSTAL STRUCTURES OF NATIVE AND INHIBITED FORMS OF HUMAN CATHEPSIN D: IMPLICATIONS FOR LYSOSOMAL TARGETING AND DRUG DESIGN
Authors : Baldwin, E.T.; Bhat, T.N.; Gulnik, S.; Erickson, J.W.
Deposited on : 1993-04-22
Resolution : 2.50 Å(reported)

This is a wwPDB X-ray Structure Validation Summary Report for a publicly released PDB entry.

We welcome your comments at validation@mail.wwpdb.org

A user guide is available at

<https://www.wwpdb.org/validation/2017/XrayValidationReportHelp>

with specific help available everywhere you see the ⓘ symbol.

The types of validation reports are described at

<http://www.wwpdb.org/validation/2017/FAQs#types>.

The following versions of software and data (see [references ⓘ](#)) were used in the production of this report:

MolProbity : 4-5-2 with Phenix2.0
Mogul : 2022.3.0, CSD as543be (2022)
Xtrriage (Phenix) : **NOT EXECUTED**
EDS : **NOT EXECUTED**
Percentile statistics : 20250101.v01 (using entries in the PDB archive January 1st 2025)
Ideal geometry (proteins) : Engh & Huber (2001)
Ideal geometry (DNA, RNA) : Parkinson et al. (1996)
Validation Pipeline (wwPDB-VP) : 2.49

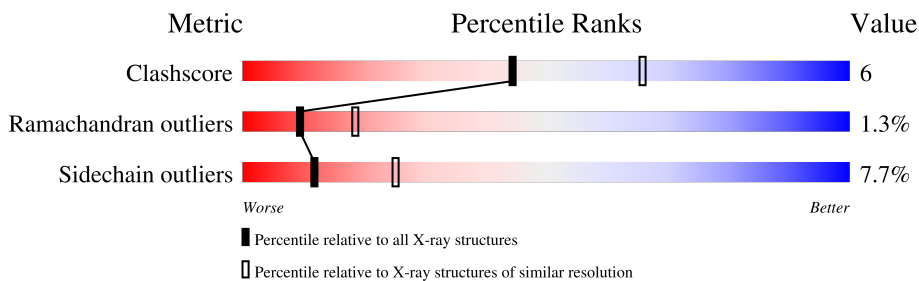
1 Overall quality at a glance

The following experimental techniques were used to determine the structure:

X-RAY DIFFRACTION

The reported resolution of this entry is 2.50 Å.

Percentile scores (ranging between 0-100) for global validation metrics of the entry are shown in the following graphic. The table shows the number of entries on which the scores are based.



Metric	Whole archive (#Entries)	Similar resolution (#Entries, resolution range(Å))
Clashscore	190562	6492 (2.50-2.50)
Ramachandran outliers	187476	6378 (2.50-2.50)
Sidechain outliers	187428	6380 (2.50-2.50)

The table below summarises the geometric issues observed across the polymeric chains and their fit to the electron density. The red, orange, yellow and green segments of the lower bar indicate the fraction of residues that contain outliers for ≥ 3 , 2, 1 and 0 types of geometric quality criteria respectively. A grey segment represents the fraction of residues that are not modelled. The numeric value for each fraction is indicated below the corresponding segment, with a dot representing fractions $\leq 5\%$.

Note EDS was not executed.

Mol	Chain	Length	Quality of chain
1	A	97	65% (Green), 34% (Yellow), 1% (Red)
1	C	97	70% (Green), 29% (Yellow), 1% (Red)
2	B	241	70% (Green), 27% (Yellow), 3% (Red)
2	D	241	70% (Green), 27% (Yellow), 3% (Red)
3	I	6	17% (Green), 50% (Yellow), 17% (Orange), 17% (Red)
3	J	6	17% (Green), 50% (Yellow), 17% (Orange), 17% (Red)
4	E	4	100% (Yellow)
4	F	4	25% (Yellow), 75% (Orange)

2 Entry composition [i](#)

There are 6 unique types of molecules in this entry. The entry contains 6766 atoms, of which 1312 are hydrogens and 0 are deuteriums.

In the tables below, the ZeroOcc column contains the number of atoms modelled with zero occupancy, the AltConf column contains the number of residues with at least one atom in alternate conformation and the Trace column contains the number of residues modelled with at most 2 atoms.

- Molecule 1 is a protein called CATHEPSIN D.

Mol	Chain	Residues	Atoms					ZeroOcc	AltConf	Trace	
			Total	C	H	N	O				S
1	A	97	904	478	156	119	146	5	0	0	0
1	C	97	904	478	156	119	146	5	0	0	0

- Molecule 2 is a protein called CATHEPSIN D.

Mol	Chain	Residues	Atoms					ZeroOcc	AltConf	Trace	
			Total	C	H	N	O				S
2	B	241	2234	1184	389	302	348	11	0	0	0
2	D	241	2234	1184	389	302	348	11	0	0	0

- Molecule 3 is a protein called PEPSTATIN.

Mol	Chain	Residues	Atoms					ZeroOcc	AltConf	Trace
			Total	C	H	N	O			
3	I	6	55	34	7	5	9	0	0	0
3	J	6	55	34	7	5	9	0	0	0

- Molecule 4 is an oligosaccharide called alpha-D-mannopyranose-(1-6)-beta-D-mannopyranose-(1-4)-2-acetamido-2-deoxy-beta-D-glucopyranose-(1-4)-2-acetamido-2-deoxy-beta-D-glucopyranose.



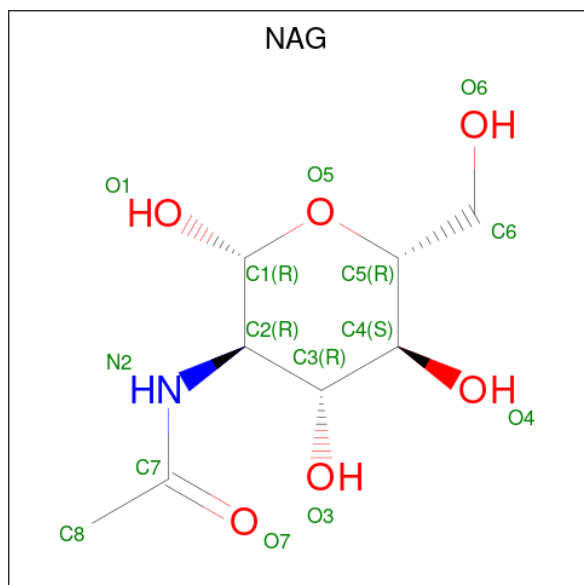
Mol	Chain	Residues	Atoms					ZeroOcc	AltConf	Trace
			Total	C	H	N	O			
4	E	4	96	28	46	2	20	0	0	0

Continued on next page...

Continued from previous page...

Mol	Chain	Residues	Atoms					ZeroOcc	AltConf	Trace
			Total	C	H	N	O			
4	F	4	96	28	46	2	20	0	0	0

- Molecule 5 is 2-acetamido-2-deoxy-beta-D-glucopyranose (CCD ID: NAG) (formula: $C_8H_{15}NO_6$).



Mol	Chain	Residues	Atoms					ZeroOcc	AltConf
			Total	C	H	N	O		
5	B	1	28	8	14	1	5	0	0
5	D	1	28	8	14	1	5	0	0

- Molecule 6 is water.

Mol	Chain	Residues	Atoms			ZeroOcc	AltConf
			Total	H	O		
6	A	9	27	18	9	0	0
6	B	13	39	26	13	0	0
6	C	9	27	18	9	0	0
6	D	13	39	26	13	0	0

3 Residue-property plots [i](#)

These plots are drawn for all protein, RNA, DNA and oligosaccharide chains in the entry. The first graphic for a chain summarises the proportions of the various outlier classes displayed in the second graphic. The second graphic shows the sequence view annotated by issues in geometry. Residues are color-coded according to the number of geometric quality criteria for which they contain at least one outlier: green = 0, yellow = 1, orange = 2 and red = 3 or more. Stretches of 2 or more consecutive residues without any outlier are shown as a green connector. Residues present in the sample, but not in the model, are shown in grey.

Note EDS was not executed.

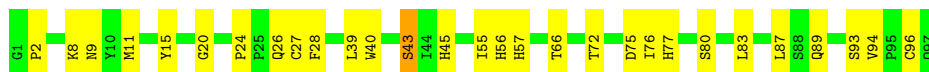
- Molecule 1: CATHEPSIN D

Chain A:  65% 34%



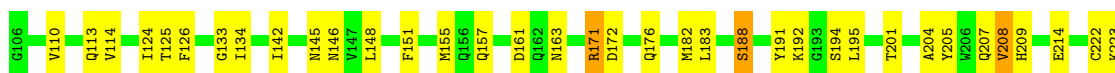
- Molecule 1: CATHEPSIN D

Chain C:  70% 29%



- Molecule 2: CATHEPSIN D

Chain B:  70% 27%



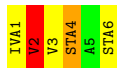
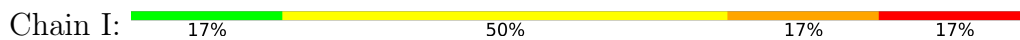
- Molecule 2: CATHEPSIN D

Chain D:  70% 27%

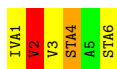
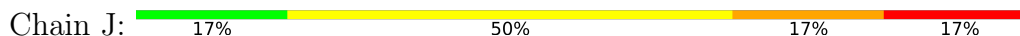




- Molecule 3: PEPSTATIN



- Molecule 3: PEPSTATIN



- Molecule 4: alpha-D-mannopyranose-(1-6)-beta-D-mannopyranose-(1-4)-2-acetamido-2-deoxy-beta-D-glucopyranose-(1-4)-2-acetamido-2-deoxy-beta-D-glucopyranose



- Molecule 4: alpha-D-mannopyranose-(1-6)-beta-D-mannopyranose-(1-4)-2-acetamido-2-deoxy-beta-D-glucopyranose-(1-4)-2-acetamido-2-deoxy-beta-D-glucopyranose



4 Data and refinement statistics

Xtrriage (Phenix) and EDS were not executed - this section is therefore incomplete.

Property	Value	Source
Space group	P 65	Depositor
Cell constants a, b, c, α , β , γ	125.90Å 125.90Å 104.10Å 90.00° 90.00° 120.00°	Depositor
Resolution (Å)	(Not available) – 2.50	Depositor
% Data completeness (in resolution range)	(Not available) ((Not available)-2.50)	Depositor
R_{merge}	(Not available)	Depositor
R_{sym}	(Not available)	Depositor
Refinement program	X-PLOR 3.0	Depositor
R, R_{free}	0.179 , (Not available)	Depositor
Estimated twinning fraction	No twinning to report.	Xtrriage
Total number of atoms	6766	wwPDB-VP
Average B, all atoms (Å ²)	26.0	wwPDB-VP

5 Model quality [i](#)

5.1 Standard geometry [i](#)

Bond lengths and bond angles in the following residue types are not validated in this section: MAN, STA, BMA, NAG, IVA

The Z score for a bond length (or angle) is the number of standard deviations the observed value is removed from the expected value. A bond length (or angle) with $|Z| > 5$ is considered an outlier worth inspection. RMSZ is the root-mean-square of all Z scores of the bond lengths (or angles).

Mol	Chain	Bond lengths		Bond angles	
		RMSZ	# Z >5	RMSZ	# Z >5
1	A	1.09	4/771 (0.5%)	1.68	7/1051 (0.7%)
1	C	1.11	5/771 (0.6%)	1.80	16/1051 (1.5%)
2	B	0.92	1/1884 (0.1%)	1.74	34/2551 (1.3%)
2	D	0.88	1/1884 (0.1%)	1.75	30/2551 (1.2%)
3	I	0.68	0/17	1.44	0/21
3	J	0.71	0/17	1.99	0/21
All	All	0.96	11/5344 (0.2%)	1.74	87/7246 (1.2%)

Chiral center outliers are detected by calculating the chiral volume of a chiral center and verifying if the center is modelled as a planar moiety or with the opposite hand. A planarity outlier is detected by checking planarity of atoms in a peptide group, atoms in a mainchain group or atoms of a sidechain that are expected to be planar.

Mol	Chain	#Chirality outliers	#Planarity outliers
1	A	0	1
2	D	0	1
3	I	0	2
3	J	0	2
All	All	0	6

The worst 5 of 11 bond length outliers are listed below:

Mol	Chain	Res	Type	Atoms	Z	Observed(Å)	Ideal(Å)
2	B	209	HIS	CD2-NE2	-6.69	1.30	1.37
1	A	77	HIS	CD2-NE2	-6.54	1.30	1.37
1	A	57	HIS	CD2-NE2	-6.30	1.30	1.37
1	C	45	HIS	CD2-NE2	-6.26	1.30	1.37
1	A	45	HIS	CD2-NE2	-6.19	1.31	1.37

The worst 5 of 87 bond angle outliers are listed below:

Mol	Chain	Res	Type	Atoms	Z	Observed(°)	Ideal(°)
2	D	256	LEU	N-CA-C	-9.27	91.06	110.80
2	D	299	LYS	N-CA-C	8.30	122.61	109.50
2	B	124	ILE	N-CA-C	8.00	118.76	110.36
1	C	77	HIS	CA-CB-CG	-7.81	105.99	113.80
2	D	242	ASP	CA-CB-CG	7.80	120.40	112.60

There are no chirality outliers.

5 of 6 planarity outliers are listed below:

Mol	Chain	Res	Type	Group
1	A	1	GLY	Peptide
2	D	312	PRO	Peptide
3	I	4	STA	Peptide,Mainchain
3	J	4	STA	Peptide,Mainchain

5.2 Too-close contacts [\(i\)](#)

In the following table, the Non-H and H(model) columns list the number of non-hydrogen atoms and hydrogen atoms in the chain respectively. The H(added) column lists the number of hydrogen atoms added and optimized by MolProbity. The Clashes column lists the number of clashes within the asymmetric unit, whereas Symm-Clashes lists symmetry-related clashes.

Mol	Chain	Non-H	H(model)	H(added)	Clashes	Symm-Clashes
1	A	748	156	702	13	0
1	C	748	156	702	8	0
2	B	1845	389	1849	23	0
2	D	1845	389	1849	25	0
3	I	48	7	60	2	0
3	J	48	7	60	2	0
4	E	50	46	43	0	0
4	F	50	46	43	3	0
5	B	14	14	13	0	0
5	D	14	14	13	0	0
6	A	9	18	0	0	0
6	B	13	26	0	0	0
6	C	9	18	0	1	0
6	D	13	26	0	0	0
All	All	5454	1312	5334	64	0

The all-atom clashscore is defined as the number of clashes found per 1000 atoms (including hydrogen atoms). The all-atom clashscore for this structure is 6.

The worst 5 of 64 close contacts within the same asymmetric unit are listed below, sorted by their

clash magnitude.

Atom-1	Atom-2	Interatomic distance (Å)	Clash overlap (Å)
1:C:43:SER:HB2	2:D:117:GLU:HB3	1.58	0.84
2:D:263:ILE:HD13	2:D:271:LEU:HD21	1.78	0.64
2:B:268:VAL:HA	2:B:271:LEU:HD22	1.78	0.63
1:C:72:THR:HB	1:C:87:LEU:HD12	1.81	0.61
2:B:236:LEU:HD22	2:B:305:GLY:HA2	1.81	0.61

There are no symmetry-related clashes.

5.3 Torsion angles [i](#)

5.3.1 Protein backbone [i](#)

In the following table, the Percentiles column shows the percent Ramachandran outliers of the chain as a percentile score with respect to all X-ray entries followed by that with respect to entries of similar resolution.

The Analysed column shows the number of residues for which the backbone conformation was analysed, and the total number of residues.

Mol	Chain	Analysed	Favoured	Allowed	Outliers	Percentiles	
1	A	95/97 (98%)	90 (95%)	5 (5%)	0	100	100
1	C	95/97 (98%)	92 (97%)	3 (3%)	0	100	100
2	B	239/241 (99%)	225 (94%)	12 (5%)	2 (1%)	16	31
2	D	239/241 (99%)	218 (91%)	16 (7%)	5 (2%)	5	9
3	I	3/6 (50%)	2 (67%)	0	1 (33%)	0	0
3	J	3/6 (50%)	2 (67%)	0	1 (33%)	0	0
All	All	674/688 (98%)	629 (93%)	36 (5%)	9 (1%)	9	18

5 of 9 Ramachandran outliers are listed below:

Mol	Chain	Res	Type
2	D	224	GLU
3	J	2	VAL
2	D	300	THR
2	B	258	GLN
3	I	2	VAL

5.3.2 Protein sidechains [i](#)

In the following table, the Percentiles column shows the percent sidechain outliers of the chain as a percentile score with respect to all X-ray entries followed by that with respect to entries of similar resolution.

The Analysed column shows the number of residues for which the sidechain conformation was analysed, and the total number of residues.

Mol	Chain	Analysed	Rotameric	Outliers	Percentiles	
1	A	85/86 (99%)	80 (94%)	5 (6%)	18	37
1	C	85/86 (99%)	81 (95%)	4 (5%)	23	47
2	B	199/199 (100%)	182 (92%)	17 (8%)	10	22
2	D	105/199 (53%)	98 (93%)	7 (7%)	15	31
3	I	2/2 (100%)	0	2 (100%)	0	0
3	J	2/2 (100%)	0	2 (100%)	0	0
All	All	478/574 (83%)	441 (92%)	37 (8%)	12	25

5 of 37 residues with a non-rotameric sidechain are listed below:

Mol	Chain	Res	Type
2	D	108	VAL
3	J	2	VAL
2	D	141	ARG
2	D	195	LEU
2	B	224	GLU

Sometimes sidechains can be flipped to improve hydrogen bonding and reduce clashes. 5 of 6 such sidechains are listed below:

Mol	Chain	Res	Type
2	D	121	GLN
2	D	146	ASN
2	D	337	ASN
2	B	337	ASN
2	B	162	GLN

5.3.3 RNA [i](#)

There are no RNA molecules in this entry.

5.4 Non-standard residues in protein, DNA, RNA chains [i](#)

4 non-standard protein/DNA/RNA residues are modelled in this entry.

In the following table, the Counts columns list the number of bonds (or angles) for which Mogul statistics could be retrieved, the number of bonds (or angles) that are observed in the model and the number of bonds (or angles) that are defined in the Chemical Component Dictionary. The Link column lists molecule types, if any, to which the group is linked. The Z score for a bond length (or angle) is the number of standard deviations the observed value is removed from the expected value. A bond length (or angle) with $|Z| > 2$ is considered an outlier worth inspection. RMSZ is the root-mean-square of all Z scores of the bond lengths (or angles).

Mol	Type	Chain	Res	Link	Bond lengths			Bond angles		
					Counts	RMSZ	# Z > 2	Counts	RMSZ	# Z > 2
3	STA	I	6	3	11,11,11	1.07	1 (9%)	11,14,14	2.05	4 (36%)
3	STA	I	4	3	10,10,11	0.76	0	9,12,14	2.25	3 (33%)
3	STA	J	6	3	11,11,11	1.36	2 (18%)	11,14,14	2.29	5 (45%)
3	STA	J	4	3	10,10,11	1.05	1 (10%)	9,12,14	2.07	4 (44%)

In the following table, the Chirals column lists the number of chiral outliers, the number of chiral centers analysed, the number of these observed in the model and the number defined in the Chemical Component Dictionary. Similar counts are reported in the Torsion and Rings columns. '-' means no outliers of that kind were identified.

Mol	Type	Chain	Res	Link	Chirals	Torsions	Rings
3	STA	I	6	3	-	9/12/12/12	-
3	STA	I	4	3	-	2/11/11/12	-
3	STA	J	6	3	-	6/12/12/12	-
3	STA	J	4	3	-	2/11/11/12	-

All (4) bond length outliers are listed below:

Mol	Chain	Res	Type	Atoms	Z	Observed(Å)	Ideal(Å)
3	J	6	STA	CM-CH	2.73	1.57	1.53
3	I	6	STA	CH-CA	2.32	1.55	1.53
3	J	6	STA	CH-CA	2.30	1.55	1.53
3	J	4	STA	CM-CH	-2.30	1.49	1.53

The worst 5 of 16 bond angle outliers are listed below:

Mol	Chain	Res	Type	Atoms	Z	Observed(°)	Ideal(°)
3	I	6	STA	CG-CB-CA	4.68	125.84	115.76
3	J	6	STA	CM-CH-CA	4.27	119.52	112.93

Continued on next page...

Continued from previous page...

Mol	Chain	Res	Type	Atoms	Z	Observed(°)	Ideal(°)
3	I	4	STA	CG-CB-CA	4.11	124.60	115.76
3	J	6	STA	CH-CM-C	3.75	122.19	113.93
3	J	4	STA	OH-CH-CM	-3.35	101.52	109.24

There are no chirality outliers.

5 of 19 torsion outliers are listed below:

Mol	Chain	Res	Type	Atoms
3	J	4	STA	O-C-CM-CH
3	I	6	STA	N-CA-CH-CM
3	I	6	STA	CB-CA-CH-OH
3	I	6	STA	CB-CA-CH-CM
3	I	6	STA	CA-CH-CM-C

There are no ring outliers.

No monomer is involved in short contacts.

5.5 Carbohydrates [i](#)

8 monosaccharides are modelled in this entry.

In the following table, the Counts columns list the number of bonds (or angles) for which Mogul statistics could be retrieved, the number of bonds (or angles) that are observed in the model and the number of bonds (or angles) that are defined in the Chemical Component Dictionary. The Link column lists molecule types, if any, to which the group is linked. The Z score for a bond length (or angle) is the number of standard deviations the observed value is removed from the expected value. A bond length (or angle) with $|Z| > 2$ is considered an outlier worth inspection. RMSZ is the root-mean-square of all Z scores of the bond lengths (or angles).

Mol	Type	Chain	Res	Link	Bond lengths			Bond angles		
					Counts	RMSZ	# Z > 2	Counts	RMSZ	# Z > 2
4	NAG	E	1	4,1	14,14,15	0.65	0	17,19,21	1.40	2 (11%)
4	NAG	E	2	4	14,14,15	0.53	0	17,19,21	1.56	4 (23%)
4	BMA	E	3	4	11,11,12	1.86	3 (27%)	15,15,17	1.71	4 (26%)
4	MAN	E	4	4	11,11,12	1.16	2 (18%)	15,15,17	1.05	1 (6%)
4	NAG	F	1	4,1	14,14,15	0.74	0	17,19,21	1.59	3 (17%)
4	NAG	F	2	4	14,14,15	0.78	0	17,19,21	2.12	8 (47%)
4	BMA	F	3	4	11,11,12	0.79	0	15,15,17	1.64	5 (33%)
4	MAN	F	4	4	11,11,12	0.81	0	15,15,17	1.68	4 (26%)

In the following table, the Chirals column lists the number of chiral outliers, the number of chiral centers analysed, the number of these observed in the model and the number defined in the Chemical Component Dictionary. Similar counts are reported in the Torsion and Rings columns. '-' means no outliers of that kind were identified.

Mol	Type	Chain	Res	Link	Chirals	Torsions	Rings
4	NAG	E	1	4,1	-	0/6/23/26	0/1/1/1
4	NAG	E	2	4	-	1/6/23/26	0/1/1/1
4	BMA	E	3	4	-	2/2/19/22	1/1/1/1
4	MAN	E	4	4	-	2/2/19/22	1/1/1/1
4	NAG	F	1	4,1	-	0/6/23/26	0/1/1/1
4	NAG	F	2	4	-	1/6/23/26	0/1/1/1
4	BMA	F	3	4	-	0/2/19/22	0/1/1/1
4	MAN	F	4	4	-	2/2/19/22	0/1/1/1

All (5) bond length outliers are listed below:

Mol	Chain	Res	Type	Atoms	Z	Observed(Å)	Ideal(Å)
4	E	3	BMA	C4-C5	3.50	1.60	1.53
4	E	3	BMA	C4-C3	2.96	1.60	1.52
4	E	3	BMA	O3-C3	2.72	1.49	1.43
4	E	4	MAN	O5-C1	2.23	1.47	1.43
4	E	4	MAN	C2-C3	2.02	1.55	1.52

The worst 5 of 31 bond angle outliers are listed below:

Mol	Chain	Res	Type	Atoms	Z	Observed(°)	Ideal(°)
4	F	1	NAG	C1-O5-C5	4.53	118.25	112.19
4	F	2	NAG	O4-C4-C3	4.28	120.46	110.38
4	E	3	BMA	C2-C3-C4	-3.76	104.25	110.86
4	E	1	NAG	C2-N2-C7	-3.69	117.96	122.90
4	E	2	NAG	C1-C2-N2	-3.46	104.97	110.43

There are no chirality outliers.

5 of 8 torsion outliers are listed below:

Mol	Chain	Res	Type	Atoms
4	F	2	NAG	C1-C2-N2-C7
4	F	4	MAN	O5-C5-C6-O6
4	F	4	MAN	C4-C5-C6-O6
4	E	3	BMA	C4-C5-C6-O6
4	E	4	MAN	O5-C5-C6-O6

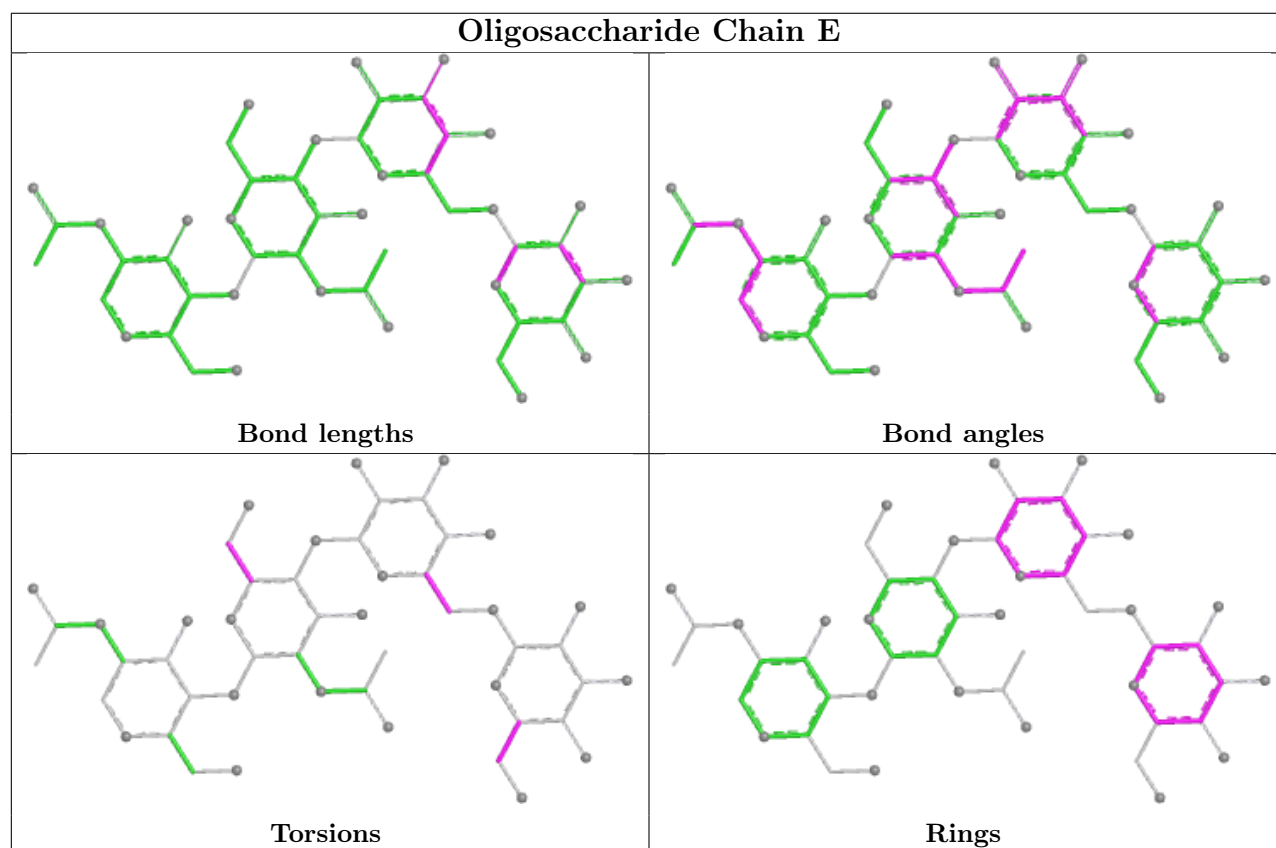
All (2) ring outliers are listed below:

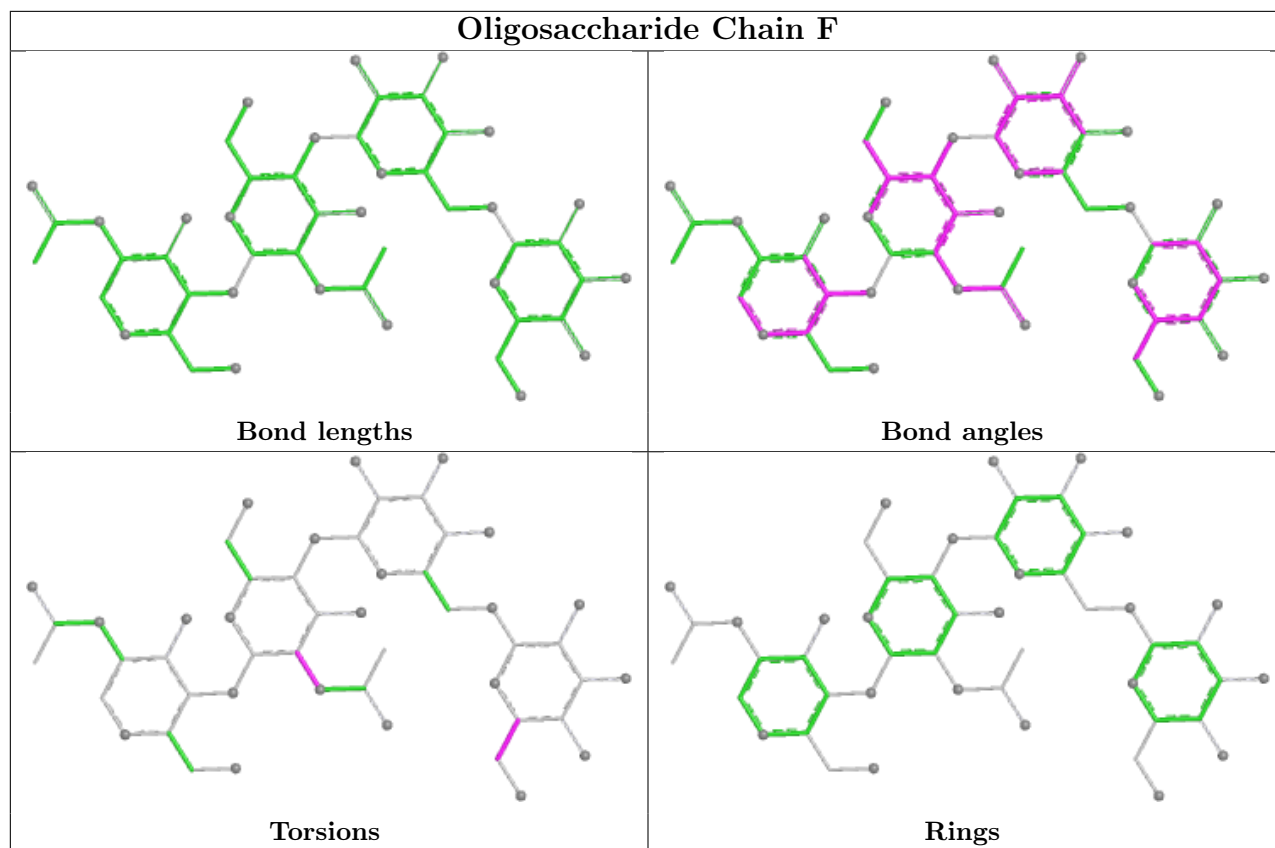
Mol	Chain	Res	Type	Atoms
4	E	4	MAN	C1-C2-C3-C4-C5-O5
4	E	3	BMA	C1-C2-C3-C4-C5-O5

3 monomers are involved in 3 short contacts:

Mol	Chain	Res	Type	Clashes	Symm-Clashes
4	F	1	NAG	1	0
4	F	2	NAG	3	0
4	F	3	BMA	1	0

The following is a two-dimensional graphical depiction of Mogul quality analysis of bond lengths, bond angles, torsion angles, and ring geometry for oligosaccharide.





5.6 Ligand geometry [i](#)

2 ligands are modelled in this entry.

In the following table, the Counts columns list the number of bonds (or angles) for which Mogul statistics could be retrieved, the number of bonds (or angles) that are observed in the model and the number of bonds (or angles) that are defined in the Chemical Component Dictionary. The Link column lists molecule types, if any, to which the group is linked. The Z score for a bond length (or angle) is the number of standard deviations the observed value is removed from the expected value. A bond length (or angle) with $|Z| > 2$ is considered an outlier worth inspection. RMSZ is the root-mean-square of all Z scores of the bond lengths (or angles).

Mol	Type	Chain	Res	Link	Bond lengths			Bond angles		
					Counts	RMSZ	# Z > 2	Counts	RMSZ	# Z > 2
5	NAG	B	1	2	14,14,15	1.50	2 (14%)	17,19,21	1.42	3 (17%)
5	NAG	D	1	2	14,14,15	1.61	2 (14%)	17,19,21	1.98	5 (29%)

In the following table, the Chirals column lists the number of chiral outliers, the number of chiral centers analysed, the number of these observed in the model and the number defined in the Chemical Component Dictionary. Similar counts are reported in the Torsion and Rings columns. '·' means no outliers of that kind were identified.

Mol	Type	Chain	Res	Link	Chirals	Torsions	Rings
5	NAG	B	1	2	-	0/6/23/26	0/1/1/1
5	NAG	D	1	2	-	2/6/23/26	0/1/1/1

All (4) bond length outliers are listed below:

Mol	Chain	Res	Type	Atoms	Z	Observed(Å)	Ideal(Å)
5	D	1	NAG	C1-C2	4.59	1.58	1.52
5	B	1	NAG	C1-C2	3.80	1.57	1.52
5	B	1	NAG	C3-C2	2.63	1.58	1.52
5	D	1	NAG	O5-C1	2.50	1.47	1.43

The worst 5 of 8 bond angle outliers are listed below:

Mol	Chain	Res	Type	Atoms	Z	Observed(°)	Ideal(°)
5	D	1	NAG	C1-O5-C5	5.91	120.11	112.19
5	D	1	NAG	C4-C3-C2	-2.90	106.76	111.02
5	B	1	NAG	C4-C3-C2	-2.71	107.04	111.02
5	B	1	NAG	C1-O5-C5	2.65	115.73	112.19
5	D	1	NAG	C3-C4-C5	-2.27	106.11	110.23

There are no chirality outliers.

All (2) torsion outliers are listed below:

Mol	Chain	Res	Type	Atoms
5	D	1	NAG	O5-C5-C6-O6
5	D	1	NAG	C4-C5-C6-O6

There are no ring outliers.

No monomer is involved in short contacts.

5.7 Other polymers [i](#)

There are no such residues in this entry.

5.8 Polymer linkage issues [i](#)

There are no chain breaks in this entry.

6 Fit of model and data

6.1 Protein, DNA and RNA chains

EDS was not executed - this section is therefore empty.

6.2 Non-standard residues in protein, DNA, RNA chains

EDS was not executed - this section is therefore empty.

6.3 Carbohydrates

EDS was not executed - this section is therefore empty.

6.4 Ligands

EDS was not executed - this section is therefore empty.

6.5 Other polymers

EDS was not executed - this section is therefore empty.