



wwPDB EM Validation Summary Report ⓘ

Mar 20, 2026 – 02:06 AM UTC

PDB ID : 5MD0 / pdb_00005md0
EMDB ID : EMD-3468
Title : The structure of the mature HIV-1 CA hexameric lattice with curvature parameters: tilt=5, twist=6
Authors : Mattei, S.; Glass, B.; Hagen, W.J.H.; Kraeusslich, H.-G.; Briggs, J.A.G.
Deposited on : 2016-11-10
Resolution : 8.40 Å(reported)

This is a wwPDB EM Validation Summary Report for a publicly released PDB entry.

We welcome your comments at validation@mail.wwpdb.org

A user guide is available at

<https://www.wwpdb.org/validation/2017/EMValidationReportHelp>

with specific help available everywhere you see the ⓘ symbol.

The types of validation reports are described at

<http://www.wwpdb.org/validation/2017/FAQs#types>.

The following versions of software and data (see [references ⓘ](#)) were used in the production of this report:

EMDB validation analysis : 0.0.1.dev132
MolProbity : 4-5-2 with Phenix2.0
Percentile statistics : 20250101.v01 (using entries in the PDB archive January 1st 2025)
EM percentile statistics : 202505.v01 (Using data in the EMDB archive up until May 2025)
MapQ : 1.9.13
Ideal geometry (proteins) : Engh & Huber (2001)
Ideal geometry (DNA, RNA) : Parkinson et al. (1996)
Validation Pipeline (wwPDB-VP) : 2.49

Continued from previous page...

Mol	Chain	Length	Quality of chain
1	F	74	
1	G	74	
1	W	74	
2	H	147	
2	I	147	
2	J	147	
2	a	147	
2	b	147	
2	f	147	

2 Entry composition [i](#)

There are 2 unique types of molecules in this entry. The entry contains 5888 atoms, of which 0 are hydrogens and 0 are deuteriums.

In the tables below, the AltConf column contains the number of residues with at least one atom in alternate conformation and the Trace column contains the number of residues modelled with at most 2 atoms.

- Molecule 1 is a protein called Capsid protein p24.

Mol	Chain	Residues	Atoms				AltConf	Trace
			Total	C	N	O		
1	A	74	295	148	74	73	0	0
1	B	74	295	148	74	73	0	0
1	F	74	295	148	74	73	0	0
1	W	74	295	148	74	73	0	0
1	C	74	295	148	74	73	0	0
1	D	74	295	148	74	73	0	0
1	E	74	295	148	74	73	0	0
1	G	74	295	148	74	73	0	0

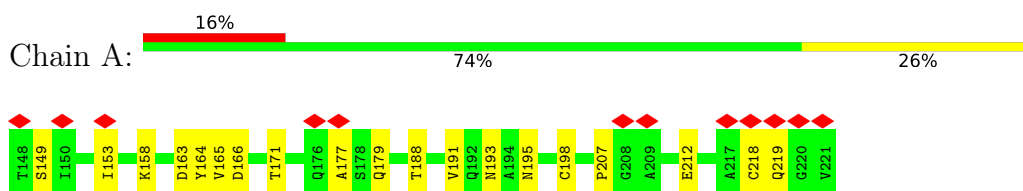
- Molecule 2 is a protein called Capsid protein p24.

Mol	Chain	Residues	Atoms				AltConf	Trace
			Total	C	N	O		
2	a	147	588	294	147	147	0	0
2	b	147	588	294	147	147	0	0
2	f	147	588	294	147	147	0	0
2	H	147	588	294	147	147	0	0
2	I	147	588	294	147	147	0	0
2	J	147	588	294	147	147	0	0

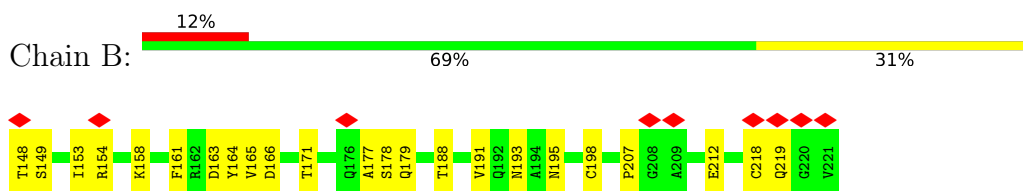
3 Residue-property plots [i](#)

These plots are drawn for all protein, RNA, DNA and oligosaccharide chains in the entry. The first graphic for a chain summarises the proportions of the various outlier classes displayed in the second graphic. The second graphic shows the sequence view annotated by issues in geometry and atom inclusion in map density. Residues are color-coded according to the number of geometric quality criteria for which they contain at least one outlier: green = 0, yellow = 1, orange = 2 and red = 3 or more. A red diamond above a residue indicates a poor fit to the EM map for this residue (all-atom inclusion < 40%). Stretches of 2 or more consecutive residues without any outlier are shown as a green connector. Residues present in the sample, but not in the model, are shown in grey.

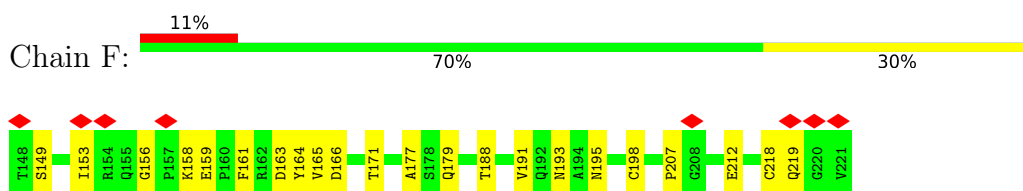
- Molecule 1: Capsid protein p24



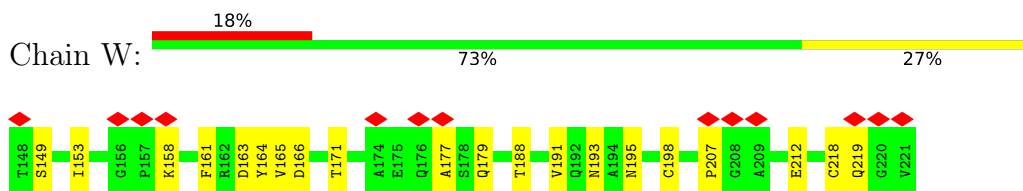
- Molecule 1: Capsid protein p24



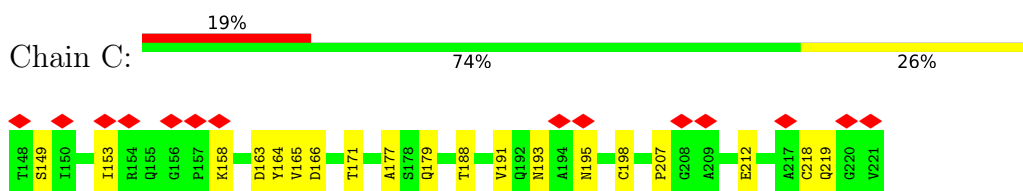
- Molecule 1: Capsid protein p24



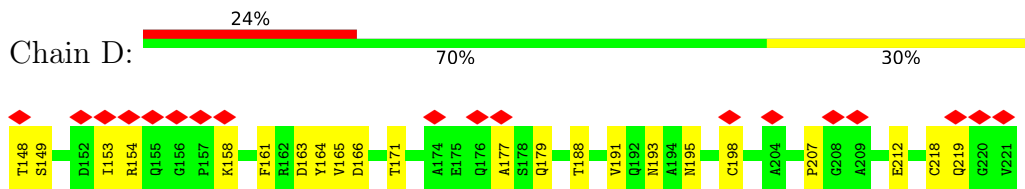
- Molecule 1: Capsid protein p24



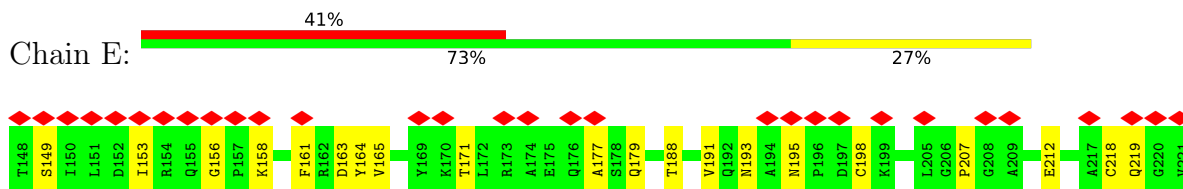
- Molecule 1: Capsid protein p24



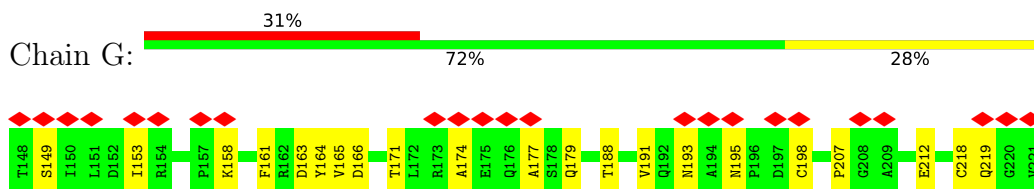
• Molecule 1: Capsid protein p24



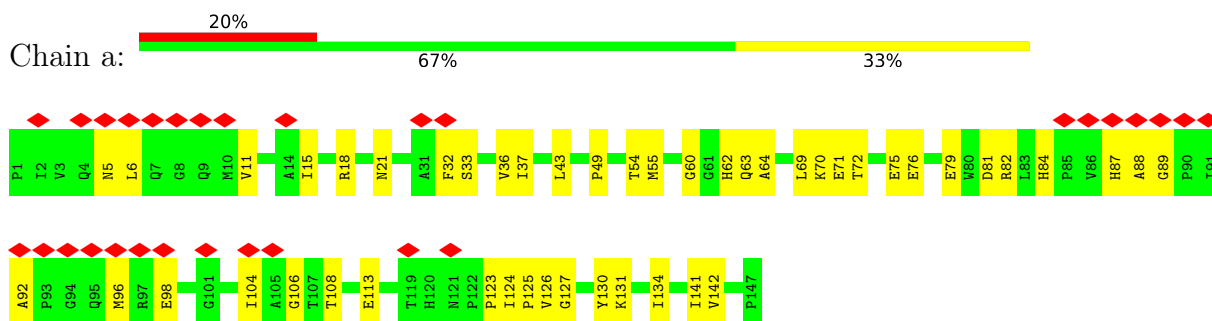
• Molecule 1: Capsid protein p24



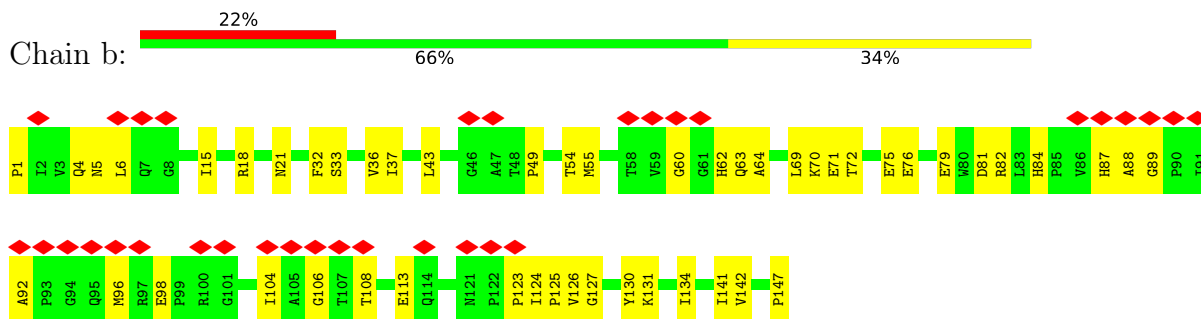
• Molecule 1: Capsid protein p24



• Molecule 2: Capsid protein p24

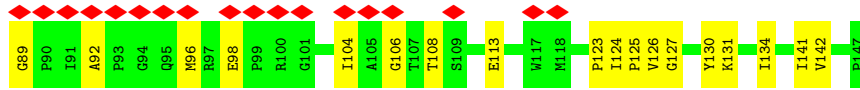
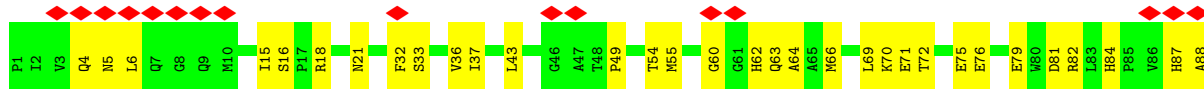


• Molecule 2: Capsid protein p24

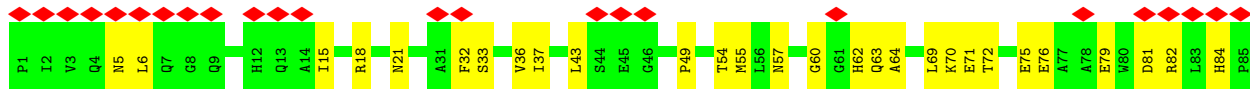


• Molecule 2: Capsid protein p24

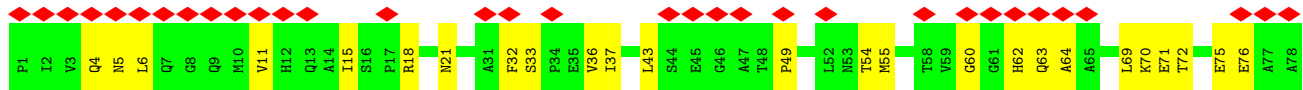




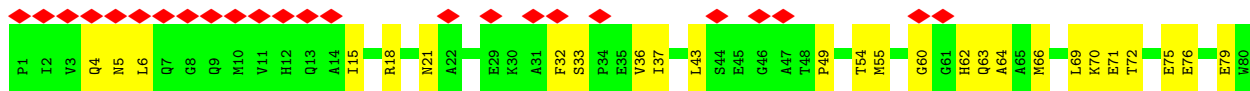
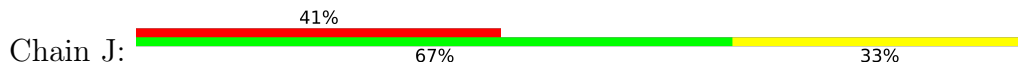
• Molecule 2: Capsid protein p24



• Molecule 2: Capsid protein p24



• Molecule 2: Capsid protein p24



4 Experimental information

Property	Value	Source
EM reconstruction method	SUBTOMOGRAM AVERAGING	Depositor
Imposed symmetry	POINT, C1	Depositor
Number of subtomograms used	13083	Depositor
Resolution determination method	FSC 0.143 CUT-OFF	Depositor
CTF correction method	PHASE FLIPPING ONLY; CTF correction was performed using the ctfphaseflip program in IMOD prior to backprojection.	Depositor
Microscope	FEI TITAN KRIOS	Depositor
Voltage (kV)	300	Depositor
Electron dose ($e^-/\text{\AA}^2$)	2.2	Depositor
Minimum defocus (nm)	2000	Depositor
Maximum defocus (nm)	6500	Depositor
Magnification	81000	Depositor
Image detector	GATAN K2 QUANTUM (4k x 4k)	Depositor
Maximum map value	0.557	Depositor
Minimum map value	-0.272	Depositor
Average map value	0.001	Depositor
Map value standard deviation	0.050	Depositor
Recommended contour level	0.2	Depositor
Map size (\AA)	284.8, 284.8, 284.8	wwPDB
Map dimensions	160, 160, 160	wwPDB
Map angles ($^\circ$)	90.0, 90.0, 90.0	wwPDB
Pixel spacing (\AA)	1.78, 1.78, 1.78	Depositor

5 Model quality i

5.1 Standard geometry i

The Z score for a bond length (or angle) is the number of standard deviations the observed value is removed from the expected value. A bond length (or angle) with $|Z| > 5$ is considered an outlier worth inspection. RMSZ is the root-mean-square of all Z scores of the bond lengths (or angles).

Mol	Chain	Bond lengths		Bond angles	
		RMSZ	# Z >5	RMSZ	# Z >5
1	A	2.29	11/294 (3.7%)	2.76	20/366 (5.5%)
1	B	2.29	12/294 (4.1%)	2.75	22/366 (6.0%)
1	C	2.29	11/294 (3.7%)	2.76	20/366 (5.5%)
1	D	2.30	12/294 (4.1%)	2.76	21/366 (5.7%)
1	E	2.29	10/294 (3.4%)	2.76	21/366 (5.7%)
1	F	2.29	11/294 (3.7%)	2.76	22/366 (6.0%)
1	G	2.31	13/294 (4.4%)	2.76	20/366 (5.5%)
1	W	2.31	12/294 (4.1%)	2.76	20/366 (5.5%)
2	H	2.40	20/587 (3.4%)	2.83	57/732 (7.8%)
2	I	2.40	19/587 (3.2%)	2.82	58/732 (7.9%)
2	J	2.41	19/587 (3.2%)	2.84	59/732 (8.1%)
2	a	2.40	20/587 (3.4%)	2.83	57/732 (7.8%)
2	b	2.41	21/587 (3.6%)	2.83	58/732 (7.9%)
2	f	2.40	19/587 (3.2%)	2.84	60/732 (8.2%)
All	All	2.36	210/5874 (3.6%)	2.80	515/7320 (7.0%)

The worst 5 of 210 bond length outliers are listed below:

Mol	Chain	Res	Type	Atoms	Z	Observed(Å)	Ideal(Å)
2	a	60	GLY	CA-C	-11.57	1.41	1.52
2	f	60	GLY	CA-C	-11.57	1.41	1.52
2	J	60	GLY	CA-C	-11.52	1.41	1.52
2	H	60	GLY	CA-C	-11.51	1.41	1.52
2	b	60	GLY	CA-C	-11.48	1.41	1.52

The worst 5 of 515 bond angle outliers are listed below:

Mol	Chain	Res	Type	Atoms	Z	Observed(°)	Ideal(°)
1	W	179	GLN	CA-C-N	9.38	132.84	120.28
1	W	179	GLN	C-N-CA	9.38	132.84	120.28
1	G	179	GLN	CA-C-N	9.38	132.84	120.28
1	G	179	GLN	C-N-CA	9.38	132.84	120.28
1	A	179	GLN	CA-C-N	9.37	132.84	120.28

There are no chirality outliers.

There are no planarity outliers.

5.2 Too-close contacts

In the following table, the Non-H and H(model) columns list the number of non-hydrogen atoms and hydrogen atoms in the chain respectively. The H(added) column lists the number of hydrogen atoms added and optimized by MolProbity. The Clashes column lists the number of clashes within the asymmetric unit, whereas Symm-Clashes lists symmetry-related clashes.

Mol	Chain	Non-H	H(model)	H(added)	Clashes	Symm-Clashes
1	A	295	0	77	0	0
1	B	295	0	77	1	0
1	C	295	0	77	0	0
1	D	295	0	77	1	0
1	E	295	0	77	0	0
1	F	295	0	77	0	0
1	G	295	0	77	0	0
1	W	295	0	77	0	0
2	H	588	0	156	0	0
2	I	588	0	156	1	0
2	J	588	0	156	0	0
2	a	588	0	156	0	0
2	b	588	0	156	1	0
2	f	588	0	156	0	0
All	All	5888	0	1552	2	0

The all-atom clashscore is defined as the number of clashes found per 1000 atoms (including hydrogen atoms). The all-atom clashscore for this structure is 0.

All (2) close contacts within the same asymmetric unit are listed below, sorted by their clash magnitude.

Atom-1	Atom-2	Interatomic distance (Å)	Clash overlap (Å)
1:B:148:THR:N	2:b:147:PRO:C	2.15	1.05
1:D:148:THR:N	2:I:147:PRO:C	2.15	1.04

There are no symmetry-related clashes.

5.3 Torsion angles [i](#)

5.3.1 Protein backbone [i](#)

In the following table, the Percentiles column shows the percent Ramachandran outliers of the chain as a percentile score with respect to all PDB entries followed by that with respect to all EM entries.

The Analysed column shows the number of residues for which the backbone conformation was analysed, and the total number of residues.

Mol	Chain	Analysed	Favoured	Allowed	Outliers	Percentiles	
1	A	72/74 (97%)	70 (97%)	2 (3%)	0	100	100
1	B	72/74 (97%)	70 (97%)	2 (3%)	0	100	100
1	C	72/74 (97%)	70 (97%)	2 (3%)	0	100	100
1	D	72/74 (97%)	70 (97%)	2 (3%)	0	100	100
1	E	72/74 (97%)	70 (97%)	2 (3%)	0	100	100
1	F	72/74 (97%)	70 (97%)	2 (3%)	0	100	100
1	G	72/74 (97%)	70 (97%)	2 (3%)	0	100	100
1	W	72/74 (97%)	70 (97%)	2 (3%)	0	100	100
2	H	145/147 (99%)	142 (98%)	3 (2%)	0	100	100
2	I	145/147 (99%)	142 (98%)	3 (2%)	0	100	100
2	J	145/147 (99%)	142 (98%)	3 (2%)	0	100	100
2	a	145/147 (99%)	142 (98%)	3 (2%)	0	100	100
2	b	145/147 (99%)	141 (97%)	4 (3%)	0	100	100
2	f	145/147 (99%)	142 (98%)	3 (2%)	0	100	100
All	All	1446/1474 (98%)	1411 (98%)	35 (2%)	0	100	100

There are no Ramachandran outliers to report.

5.3.2 Protein sidechains [i](#)

There are no protein residues with a non-rotameric sidechain to report in this entry.

5.3.3 RNA [i](#)

There are no RNA molecules in this entry.

5.4 Non-standard residues in protein, DNA, RNA chains [i](#)

There are no non-standard protein/DNA/RNA residues in this entry.

5.5 Carbohydrates [i](#)

There are no oligosaccharides in this entry.

5.6 Ligand geometry [i](#)

There are no ligands in this entry.

5.7 Other polymers [i](#)

There are no such residues in this entry.

5.8 Polymer linkage issues [i](#)

There are no chain breaks in this entry.

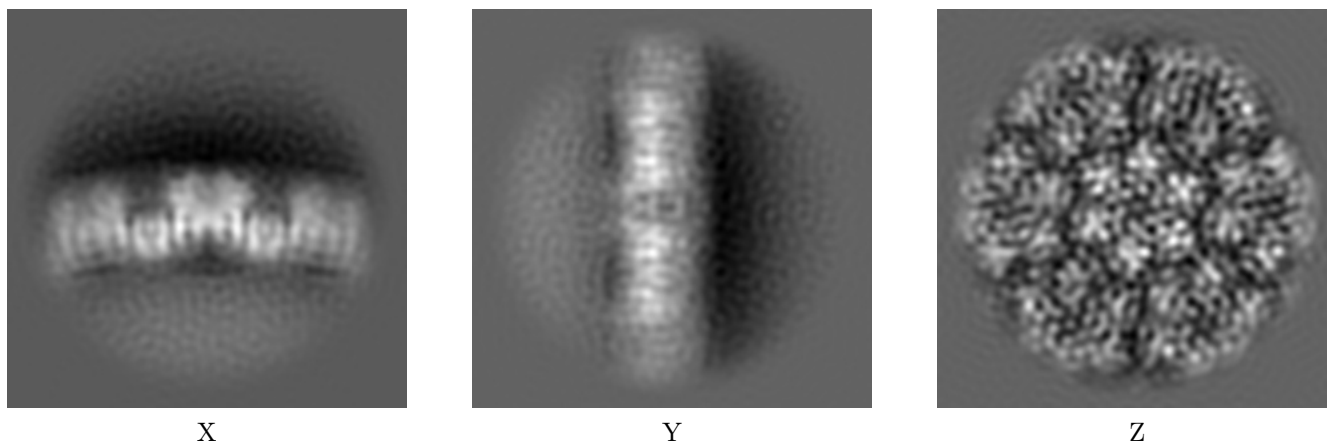
6 Map visualisation [i](#)

This section contains visualisations of the EMDB entry EMD-3468. These allow visual inspection of the internal detail of the map and identification of artifacts.

No raw map or half-maps were deposited for this entry and therefore no images, graphs, etc. pertaining to the raw map can be shown.

6.1 Orthogonal projections [i](#)

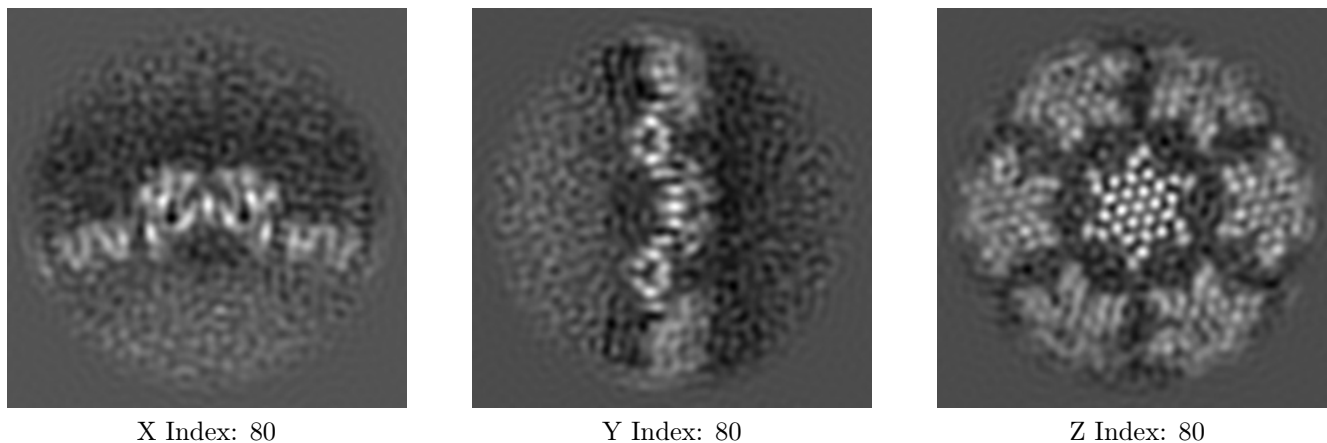
6.1.1 Primary map



The images above show the map projected in three orthogonal directions.

6.2 Central slices [i](#)

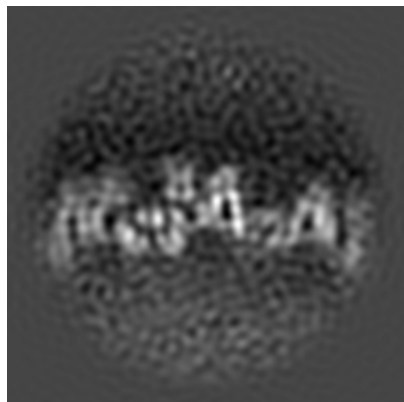
6.2.1 Primary map



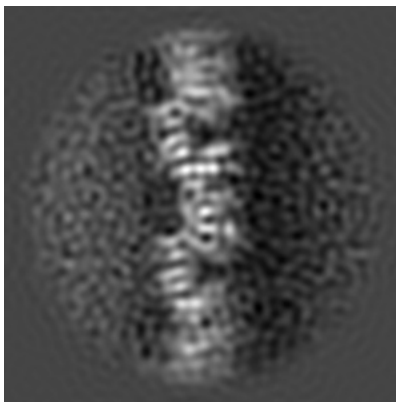
The images above show central slices of the map in three orthogonal directions.

6.3 Largest variance slices [\(i\)](#)

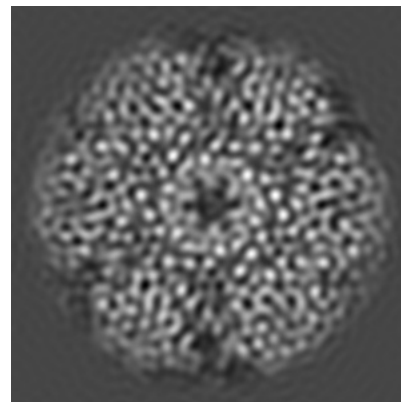
6.3.1 Primary map



X Index: 94



Y Index: 91

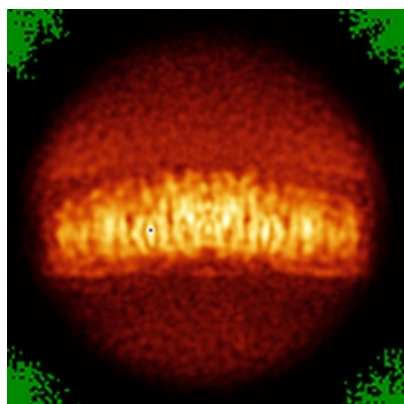


Z Index: 72

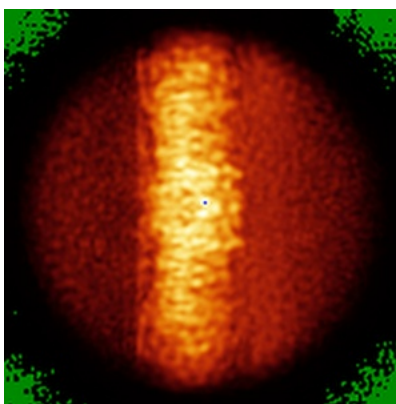
The images above show the largest variance slices of the map in three orthogonal directions.

6.4 Orthogonal standard-deviation projections (False-color) [\(i\)](#)

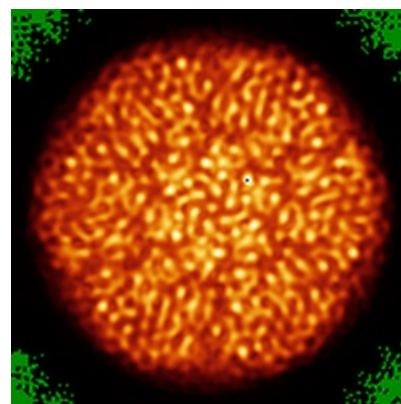
6.4.1 Primary map



X



Y

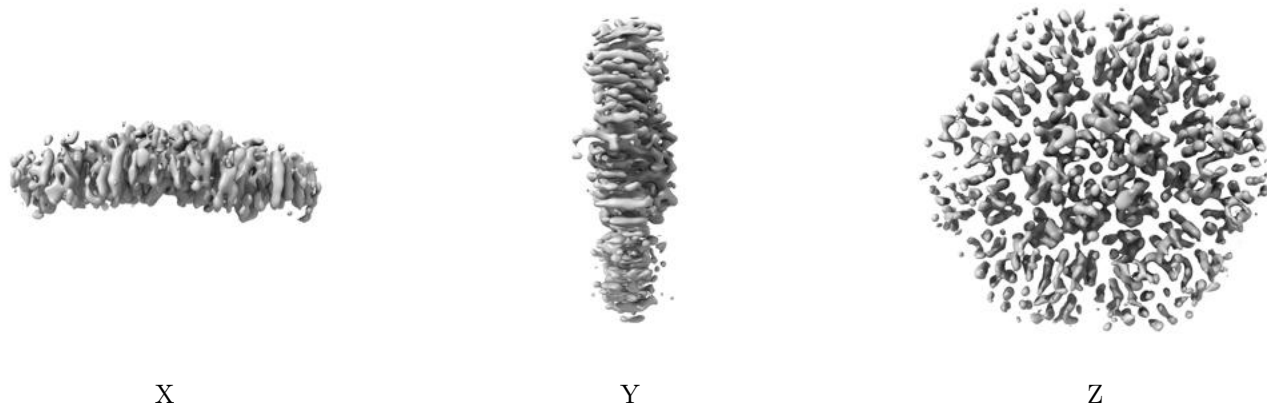


Z

The images above show the map standard deviation projections with false color in three orthogonal directions. Minimum values are shown in green, max in blue, and dark to light orange shades represent small to large values respectively.

6.5 Orthogonal surface views [i](#)

6.5.1 Primary map



The images above show the 3D surface view of the map at the recommended contour level 0.2. These images, in conjunction with the slice images, may facilitate assessment of whether an appropriate contour level has been provided.

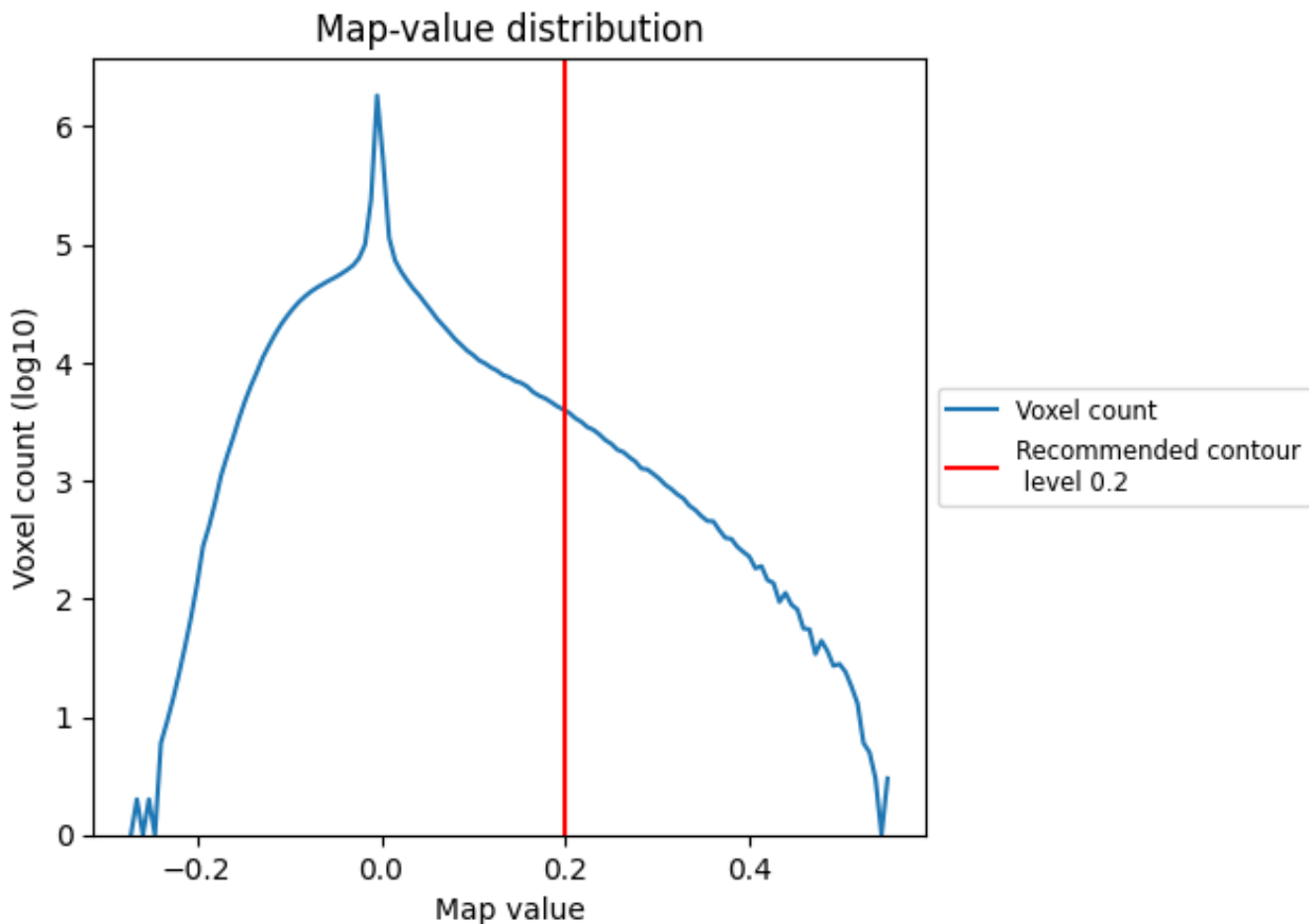
6.6 Mask visualisation [i](#)

This section was not generated. No masks/segmentation were deposited.

7 Map analysis [i](#)

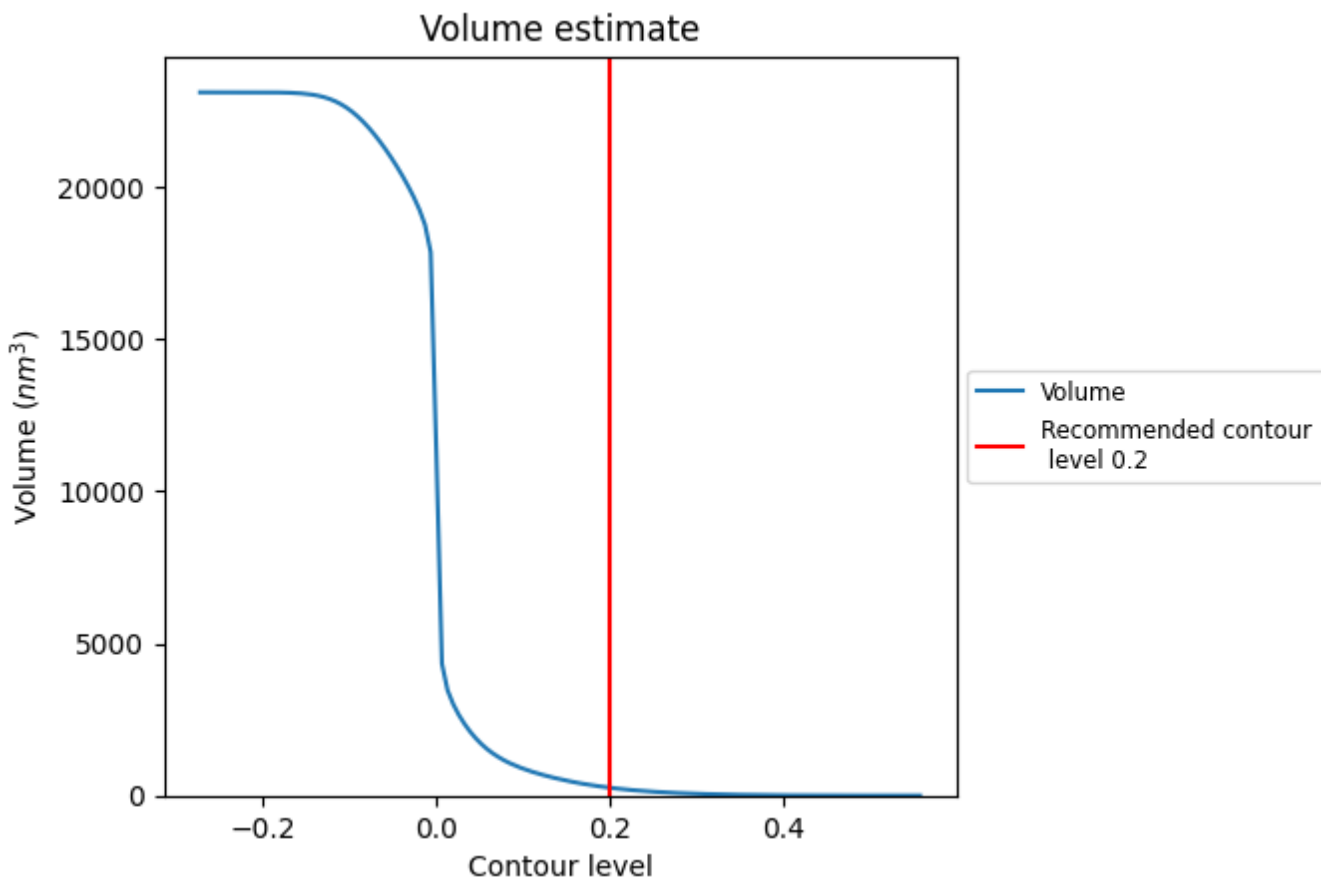
This section contains the results of statistical analysis of the map.

7.1 Map-value distribution [i](#)



The map-value distribution is plotted in 128 intervals along the x-axis. The y-axis is logarithmic. A spike in this graph at zero usually indicates that the volume has been masked.

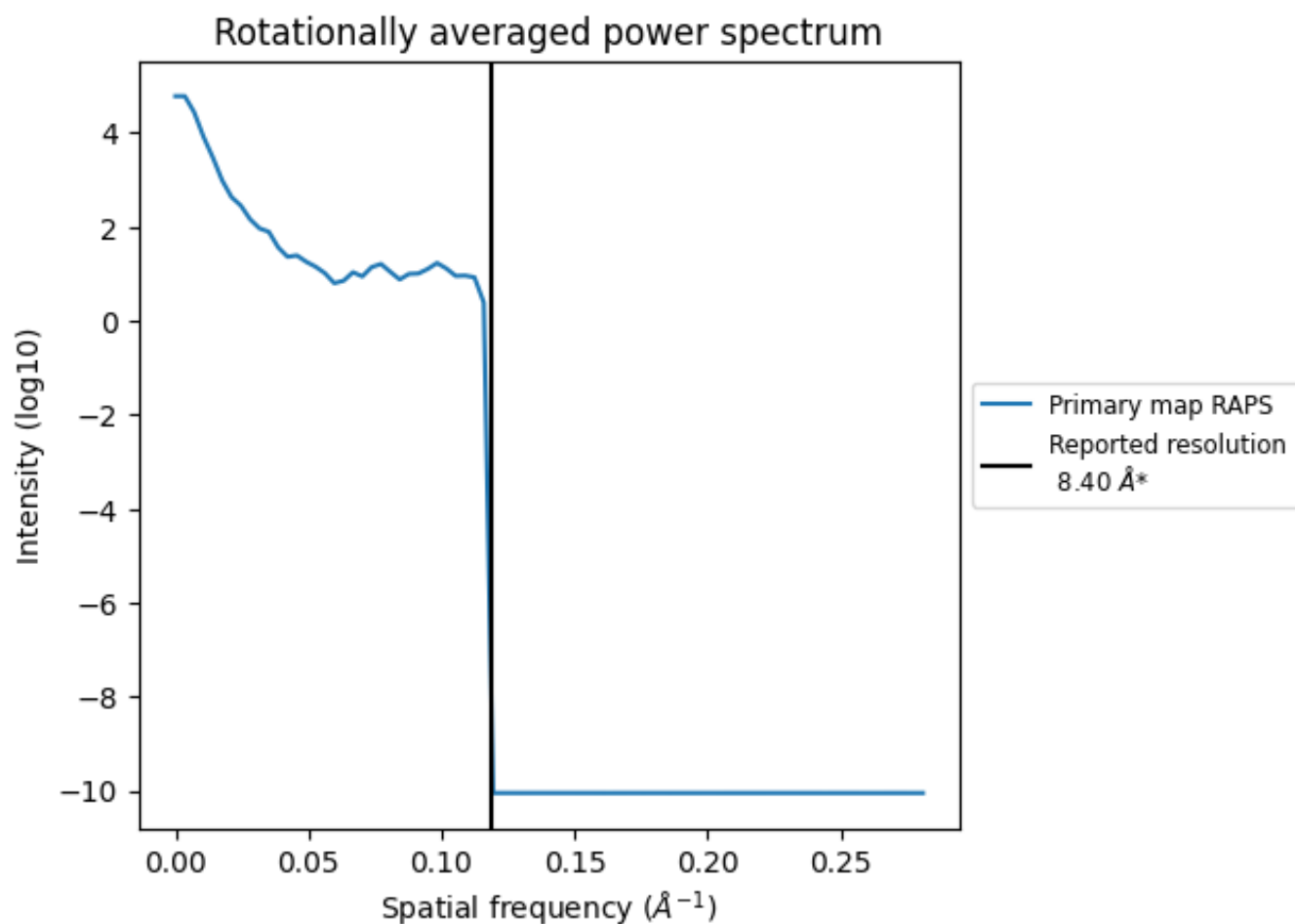
7.2 Volume estimate [i](#)



The volume at the recommended contour level is 257 nm³; this corresponds to an approximate mass of 232 kDa.

The volume estimate graph shows how the enclosed volume varies with the contour level. The recommended contour level is shown as a vertical line and the intersection between the line and the curve gives the volume of the enclosed surface at the given level.

7.3 Rotationally averaged power spectrum [\(i\)](#)



*Reported resolution corresponds to spatial frequency of 0.119 Å⁻¹

8 Fourier-Shell correlation

This section was not generated. No FSC curve or half-maps provided.

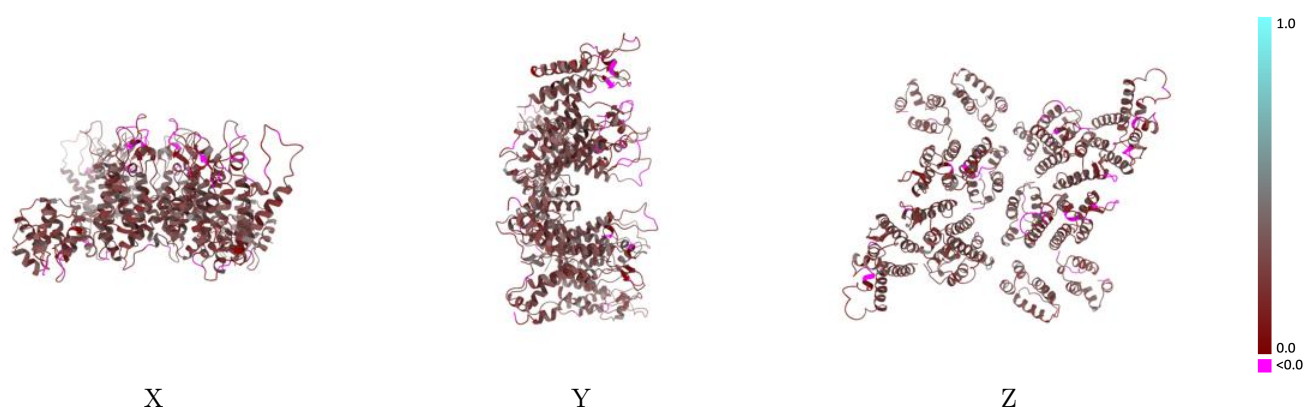
9 Map-model fit [i](#)

This section contains information regarding the fit between EMDB map EMD-3468 and PDB model 5MD0. Per-residue inclusion information can be found in section 3 on page 5.

9.1 Map-model overlay [i](#)

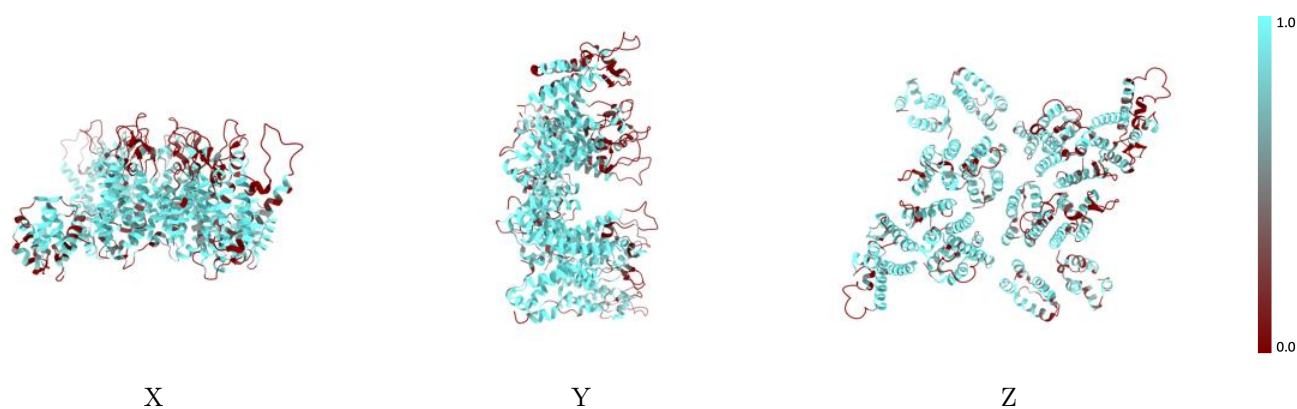
This section was not generated.

9.2 Q-score mapped to coordinate model [i](#)



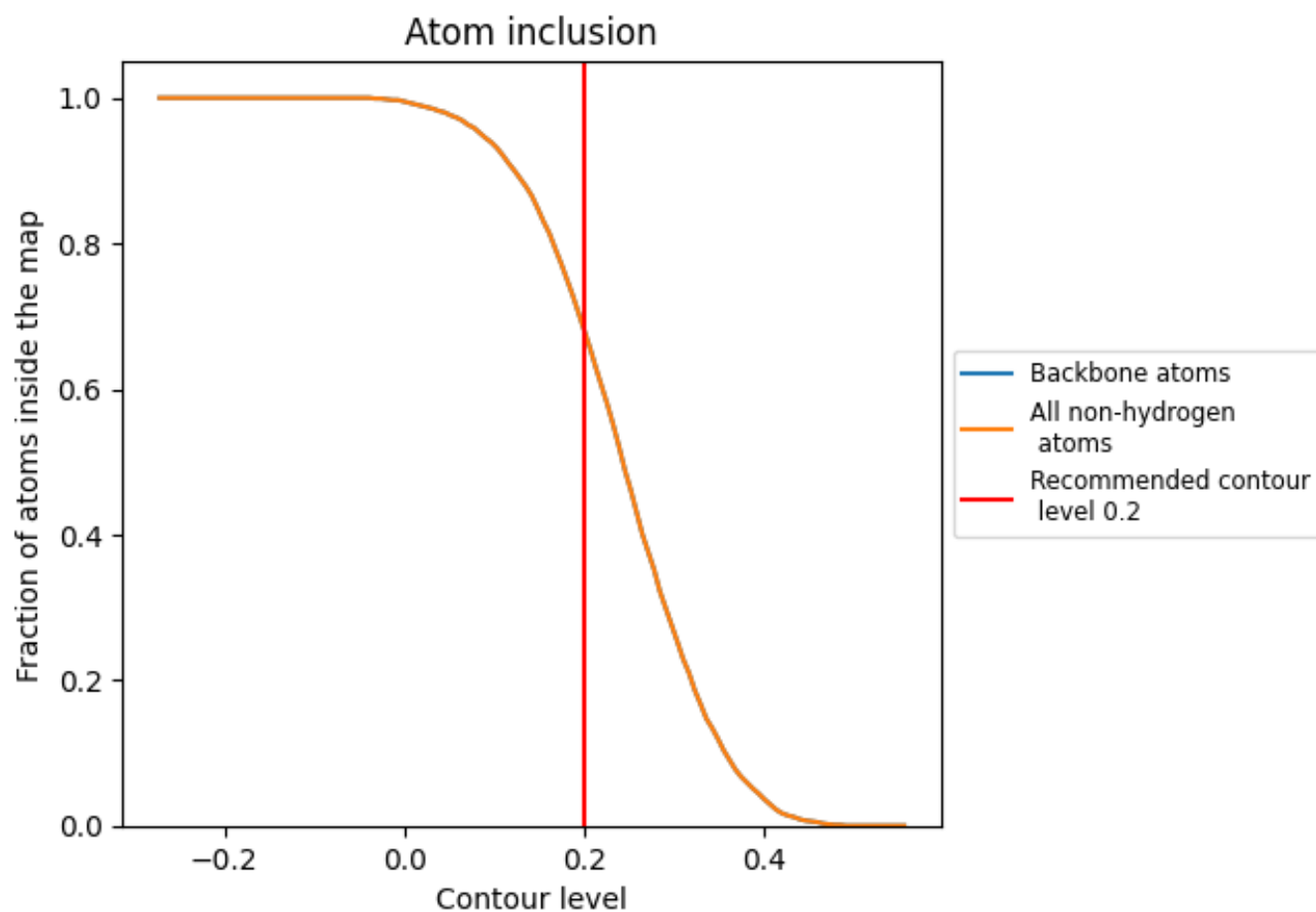
The images above show the model with each residue coloured according to its Q-score. This shows their resolvability in the map with higher Q-score values reflecting better resolvability. Please note: Q-score is calculating the resolvability of atoms, and thus high values are only expected at resolutions at which atoms can be resolved. Low Q-score values may therefore be expected for many entries.

9.3 Atom inclusion mapped to coordinate model [i](#)



The images above show the model with each residue coloured according to its atom inclusion. This shows to what extent they are inside the map at the recommended contour level (0.2).





























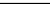
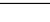
9.4 Atom inclusion [i](#)



At the recommended contour level, 68% of all backbone atoms, 68% of all non-hydrogen atoms, are inside the map.

9.5 Map-model fit summary [i](#)

The table lists the average atom inclusion at the recommended contour level (0.2) and Q-score for the entire model and for each chain.

Chain	Atom inclusion	Q-score
All	 0.6830	 0.2460
A	 0.8100	 0.2660
B	 0.8610	 0.2730
C	 0.7560	 0.2630
D	 0.7290	 0.2620
E	 0.5290	 0.2280
F	 0.8480	 0.2760
G	 0.6780	 0.2380
H	 0.5950	 0.2230
I	 0.5020	 0.2280
J	 0.5480	 0.2020
W	 0.7860	 0.2630
a	 0.7360	 0.2680
b	 0.7300	 0.2570
f	 0.7160	 0.2480

