



wwPDB X-ray Structure Validation Summary Report ⓘ

Mar 5, 2026 – 08:35 AM UTC

PDB ID : 4MES / pdb_00004mes
Title : Crystal structure of ThiT complexed with LMG116
Authors : Swier, L.J.Y.M.; Guskov, A.; Slotboom, D.J.
Deposited on : 2013-08-27
Resolution : 2.00 Å(reported)

This is a wwPDB X-ray Structure Validation Summary Report for a publicly released PDB entry.

We welcome your comments at validation@mail.wwpdb.org

A user guide is available at

<https://www.wwpdb.org/validation/2017/XrayValidationReportHelp>

with specific help available everywhere you see the ⓘ symbol.

The types of validation reports are described at

<http://www.wwpdb.org/validation/2017/FAQs#types>.

The following versions of software and data (see [references ⓘ](#)) were used in the production of this report:

MolProbity : 4-5-2 with Phenix2.0
Mogul : 2022.3.0, CSD as543be (2022)
Xtrriage (Phenix) : 2.0
EDS : 3.0
Buster-report : wwPDB partial adaption of 1.1.7 (2018)
Percentile statistics : 20250101.v01 (using entries in the PDB archive January 1st 2025)
CCP4 : 9.0.010 (Gargrove)
Density-Fitness : 1.0.12
Ideal geometry (proteins) : Engh & Huber (2001)
Ideal geometry (DNA, RNA) : Parkinson et al. (1996)
Validation Pipeline (wwPDB-VP) : 2.49

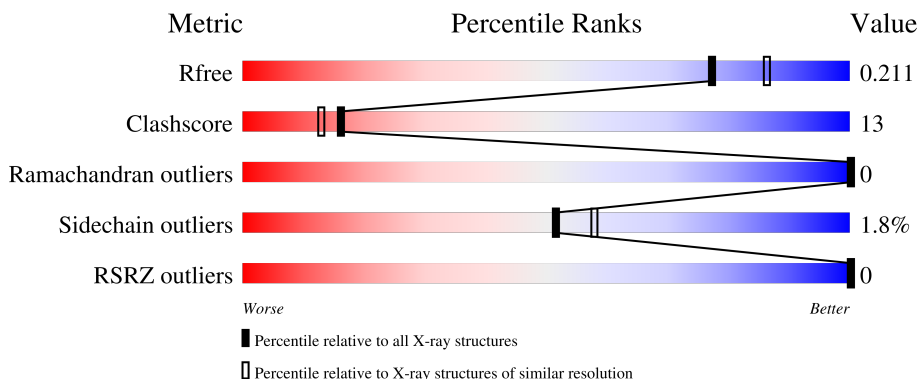
1 Overall quality at a glance

The following experimental techniques were used to determine the structure:

X-RAY DIFFRACTION



The reported resolution of this entry is 2.00 Å.

Percentile scores (ranging between 0-100) for global validation metrics of the entry are shown in the following graphic. The table shows the number of entries on which the scores are based.



Metric	Whole archive (#Entries)	Similar resolution (#Entries, resolution range(Å))
R_{free}	180053	10052 (2.00-2.00)
Clashscore	190562	11152 (2.00-2.00)
Ramachandran outliers	187476	11031 (2.00-2.00)
Sidechain outliers	187428	11029 (2.00-2.00)
RSRZ outliers	180081	10067 (2.00-2.00)

The table below summarises the geometric issues observed across the polymeric chains and their fit to the electron density. The red, orange, yellow and green segments of the lower bar indicate the fraction of residues that contain outliers for ≥ 3 , 2, 1 and 0 types of geometric quality criteria respectively. A grey segment represents the fraction of residues that are not modelled. The numeric value for each fraction is indicated below the corresponding segment, with a dot representing fractions $\leq 5\%$. The upper red bar (where present) indicates the fraction of residues that have poor fit to the electron density. The numeric value is given above the bar.

Mol	Chain	Length	Quality of chain
1	A	182	 84% 13% •
1	B	182	 84% 13% •

The following table lists non-polymeric compounds, carbohydrate monomers and non-standard residues in protein, DNA, RNA chains that are outliers for geometric or electron-density-fit criteria:

Mol	Type	Chain	Res	Chirality	Geometry	Clashes	Electron density
4	PG4	A	211	-	-	X	-
4	PG4	B	209	-	-	X	-
5	PEG	A	213	-	-	X	-
5	PEG	B	217	-	-	X	-

2 Entry composition [i](#)

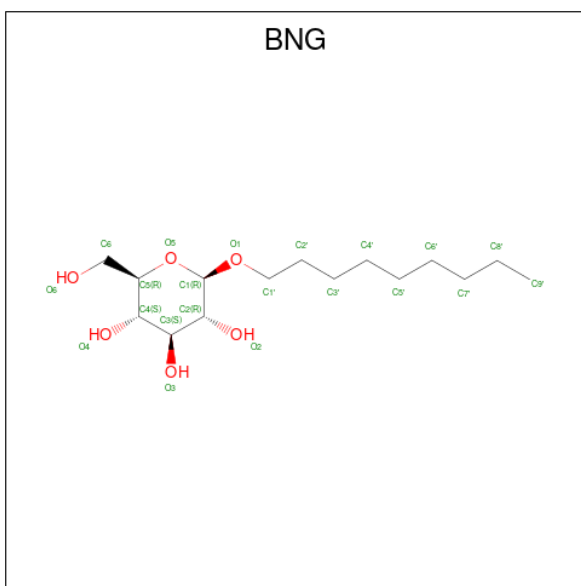
There are 9 unique types of molecules in this entry. The entry contains 3551 atoms, of which 0 are hydrogens and 0 are deuteriums.

In the tables below, the ZeroOcc column contains the number of atoms modelled with zero occupancy, the AltConf column contains the number of residues with at least one atom in alternate conformation and the Trace column contains the number of residues modelled with at most 2 atoms.

- Molecule 1 is a protein called Thiamine transporter ThiT.

Mol	Chain	Residues	Atoms					ZeroOcc	AltConf	Trace
			Total	C	N	O	S			
1	A	176	Total 1374	C 942	N 214	O 215	S 3	0	1	0
1	B	177	Total 1377	C 945	N 214	O 215	S 3	0	0	0

- Molecule 2 is nonyl beta-D-glucopyranoside (CCD ID: BNG) (formula: C₁₅H₃₀O₆).



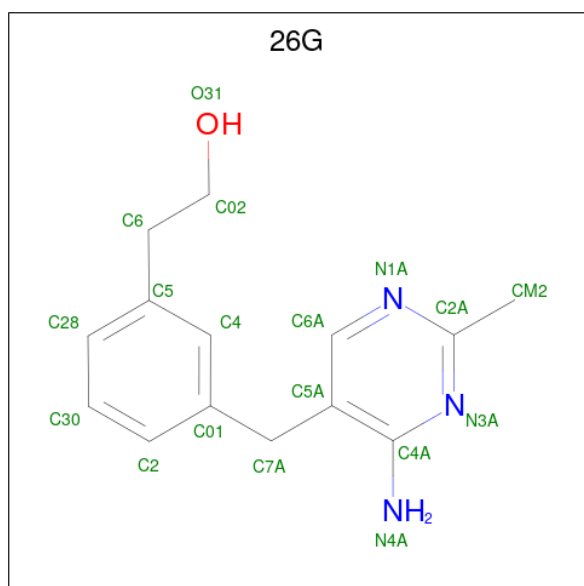
Mol	Chain	Residues	Atoms			ZeroOcc	AltConf
			Total	C	O		
2	A	1	Total 21	C 15	O 6	0	0
2	A	1	Total 21	C 15	O 6	0	0
2	B	1	Total 21	C 15	O 6	0	0
2	B	1	Total 21	C 15	O 6	0	0

Continued on next page...

Continued from previous page...

Mol	Chain	Residues	Atoms			ZeroOcc	AltConf
2	B	1	Total	C	O	0	0
			21	15	6		
2	B	1	Total	C	O	0	0
			21	15	6		
2	B	1	Total	C	O	0	0
			21	15	6		

- Molecule 3 is 2-{3-[(4-amino-2-methylpyrimidin-5-yl)methyl]phenyl}ethanol (CCD ID: 26G) (formula: C₁₄H₁₇N₃O).



Mol	Chain	Residues	Atoms				ZeroOcc	AltConf
3	A	1	Total	C	N	O	0	0
			18	14	3	1		
3	B	1	Total	C	N	O	0	0
			18	14	3	1		

- Molecule 4 is TETRAETHYLENE GLYCOL (CCD ID: PG4) (formula: C₈H₁₈O₅).



Mol	Chain	Residues	Atoms			ZeroOcc	AltConf
4	A	1	Total	C	O	0	0
			13	8	5		
4	A	1	Total	C	O	0	0
			13	8	5		
4	A	1	Total	C	O	0	0
			13	8	5		
4	A	1	Total	C	O	0	0
			13	8	5		
4	A	1	Total	C	O	0	0
			13	8	5		
4	A	1	Total	C	O	0	0
			13	8	5		
4	B	1	Total	C	O	0	0
			13	8	5		
4	B	1	Total	C	O	0	0
			13	8	5		
4	B	1	Total	C	O	0	0
			13	8	5		

- Molecule 5 is DI(HYDROXYETHYL)ETHER (CCD ID: PEG) (formula: $C_4H_{10}O_3$).



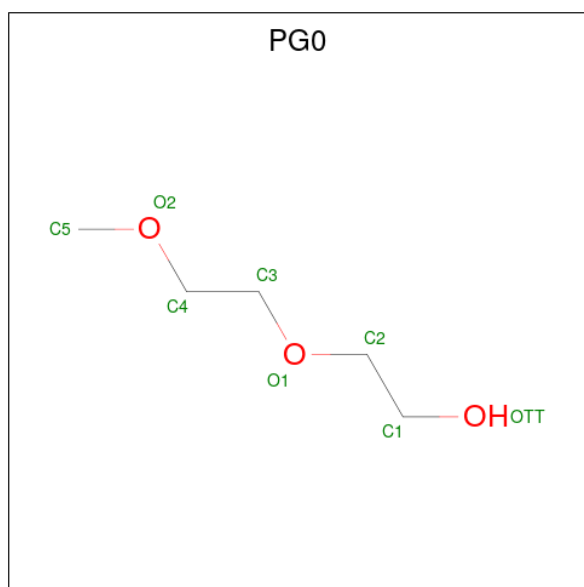
Mol	Chain	Residues	Atoms	ZeroOcc	AltConf
5	A	1	Total C O 7 4 3	0	0
5	A	1	Total C O 7 4 3	0	0
5	A	1	Total C O 7 4 3	0	0
5	A	1	Total C O 7 4 3	0	0
5	A	1	Total C O 7 4 3	0	0
5	B	1	Total C O 7 4 3	0	0
5	B	1	Total C O 7 4 3	0	0
5	B	1	Total C O 7 4 3	0	0
5	B	1	Total C O 7 4 3	0	0
5	B	1	Total C O 7 4 3	0	0
5	B	1	Total C O 7 4 3	0	0
5	B	1	Total C O 7 4 3	0	0
5	B	1	Total C O 7 4 3	0	0

Continued on next page...

Continued from previous page...

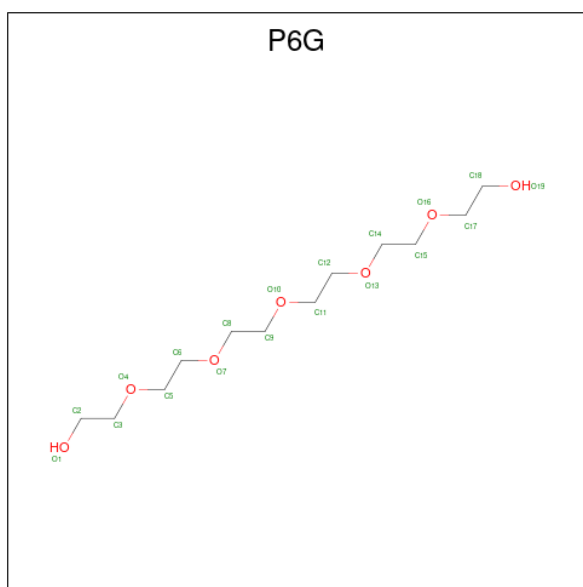
Mol	Chain	Residues	Atoms			ZeroOcc	AltConf
5	B	1	Total	C	O	0	0
			7	4	3		
5	B	1	Total	C	O	0	0
			7	4	3		
5	B	1	Total	C	O	0	0
			7	4	3		

- Molecule 6 is 2-(2-METHOXYETHOXY)ETHANOL (CCD ID: PG0) (formula: C₅H₁₂O₃).



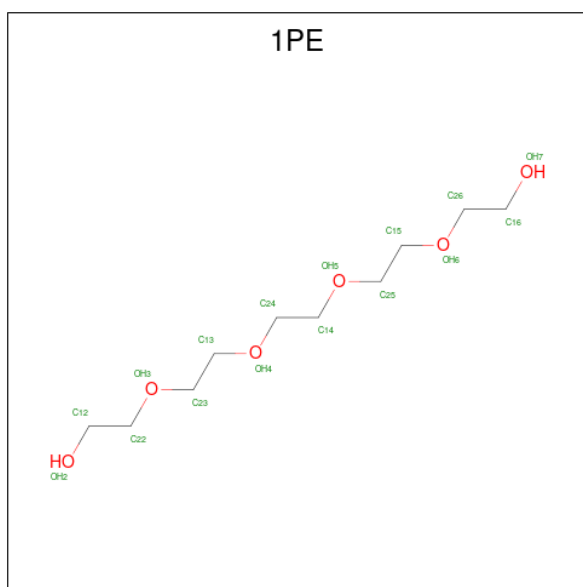
Mol	Chain	Residues	Atoms			ZeroOcc	AltConf
6	A	1	Total	C	O	0	0
			8	5	3		
6	B	1	Total	C	O	0	0
			8	5	3		

- Molecule 7 is HEXAETHYLENE GLYCOL (CCD ID: P6G) (formula: C₁₂H₂₆O₇).



Mol	Chain	Residues	Atoms			ZeroOcc	AltConf
7	A	1	Total	C	O	0	0
			19	12	7		
7	A	1	Total	C	O	0	0
			19	12	7		
7	A	1	Total	C	O	0	1
			38	24	14		
7	A	1	Total	C	O	0	0
			19	12	7		
7	B	1	Total	C	O	0	0
			19	12	7		
7	B	1	Total	C	O	0	0
			19	12	7		
7	B	1	Total	C	O	0	0
			19	12	7		

- Molecule 8 is PENTAETHYLENE GLYCOL (CCD ID: 1PE) (formula: $C_{10}H_{22}O_6$).



Mol	Chain	Residues	Atoms		ZeroOcc	AltConf
8	B	1	Total	C O	0	0
			16	10 6		


- Molecule 9 is water.

Mol	Chain	Residues	Atoms		ZeroOcc	AltConf
9	A	70	Total	O	0	2
			72	72		
9	B	99	Total	O	0	0
			99	99		

3 Residue-property plots [i](#)


These plots are drawn for all protein, RNA, DNA and oligosaccharide chains in the entry. The first graphic for a chain summarises the proportions of the various outlier classes displayed in the second graphic. The second graphic shows the sequence view annotated by issues in geometry and electron density. Residues are color-coded according to the number of geometric quality criteria for which they contain at least one outlier: green = 0, yellow = 1, orange = 2 and red = 3 or more. A red dot above a residue indicates a poor fit to the electron density ($RSRZ > 2$). Stretches of 2 or more consecutive residues without any outlier are shown as a green connector. Residues present in the sample, but not in the model, are shown in grey.

- Molecule 1: Thiamine transporter ThiT

Chain A:  84% 13%



- Molecule 1: Thiamine transporter ThiT

Chain B:  84% 13%



4 Data and refinement statistics

Property	Value	Source
Space group	C 1 2 1	Depositor
Cell constants a, b, c, α , β , γ	61.53Å 84.20Å 127.21Å 90.00° 93.52° 90.00°	Depositor
Resolution (Å)	42.32 – 2.00 42.32 – 2.00	Depositor EDS
% Data completeness (in resolution range)	99.8 (42.32-2.00) 99.8 (42.32-2.00)	Depositor EDS
R_{merge}	(Not available)	Depositor
R_{sym}	(Not available)	Depositor
$\langle I/\sigma(I) \rangle$ ¹	1.94 (at 2.00Å)	Xtrriage
Refinement program	PHENIX (phenix.refine: 1.8.2_1309)	Depositor
R, R_{free}	0.174 , 0.208 0.182 , 0.211	Depositor DCC
R_{free} test set	2187 reflections (5.00%)	wwPDB-VP
Wilson B-factor (Å ²)	29.0	Xtrriage
Anisotropy	0.384	Xtrriage
Bulk solvent k_{sol} (e/Å ³), B_{sol} (Å ²)	0.34 , 69.9	EDS
L-test for twinning ²	$\langle L \rangle = 0.44$, $\langle L^2 \rangle = 0.27$	Xtrriage
Estimated twinning fraction	No twinning to report.	Xtrriage
F_o, F_c correlation	0.96	EDS
Total number of atoms	3551	wwPDB-VP
Average B, all atoms (Å ²)	37.0	wwPDB-VP

Xtrriage's analysis on translational NCS is as follows: *The largest off-origin peak in the Patterson function is 6.37% of the height of the origin peak. No significant pseudotranslation is detected.*

¹Intensities estimated from amplitudes.

²Theoretical values of $\langle |L| \rangle$, $\langle L^2 \rangle$ for acentric reflections are 0.5, 0.333 respectively for untwinned datasets, and 0.375, 0.2 for perfectly twinned datasets.

5 Model quality [i](#)

5.1 Standard geometry [i](#)

Bond lengths and bond angles in the following residue types are not validated in this section: 1PE, 26G, PG4, PEG, BNG, P6G, PG0

The Z score for a bond length (or angle) is the number of standard deviations the observed value is removed from the expected value. A bond length (or angle) with $|Z| > 5$ is considered an outlier worth inspection. RMSZ is the root-mean-square of all Z scores of the bond lengths (or angles).

Mol	Chain	Bond lengths		Bond angles	
		RMSZ	# Z >5	RMSZ	# Z >5
1	A	0.80	0/1412	0.90	1/1925 (0.1%)
1	B	0.75	0/1416	0.86	1/1930 (0.1%)
All	All	0.77	0/2828	0.88	2/3855 (0.1%)

There are no bond length outliers.

All (2) bond angle outliers are listed below:

Mol	Chain	Res	Type	Atoms	Z	Observed(°)	Ideal(°)
1	B	122	TYR	CA-CB-CG	-5.24	104.47	113.90
1	A	31	VAL	N-CA-C	-5.19	106.74	111.67

There are no chirality outliers.

There are no planarity outliers.

5.2 Too-close contacts [i](#)

In the following table, the Non-H and H(model) columns list the number of non-hydrogen atoms and hydrogen atoms in the chain respectively. The H(added) column lists the number of hydrogen atoms added and optimized by MolProbity. The Clashes column lists the number of clashes within the asymmetric unit, whereas Symm-Clashes lists symmetry-related clashes.

Mol	Chain	Non-H	H(model)	H(added)	Clashes	Symm-Clashes
1	A	1374	0	1472	32	0
1	B	1377	0	1471	29	0
2	A	42	0	60	5	0
2	B	105	0	150	9	0
3	A	18	0	17	0	0
3	B	18	0	17	1	0
4	A	104	0	144	20	0

Continued on next page...

Continued from previous page...

Mol	Chain	Non-H	H(model)	H(added)	Clashes	Symm-Clashes
4	B	39	0	54	11	0
5	A	35	0	45	9	0
5	B	84	0	108	21	0
6	A	8	0	12	3	0
6	B	8	0	12	0	0
7	A	95	0	130	8	0
7	B	57	0	78	7	0
8	B	16	0	22	3	0
9	A	72	0	0	4	0
9	B	99	0	0	3	0
All	All	3551	0	3792	94	0

The all-atom clashscore is defined as the number of clashes found per 1000 atoms (including hydrogen atoms). The all-atom clashscore for this structure is 13.

The worst 5 of 94 close contacts within the same asymmetric unit are listed below, sorted by their clash magnitude.

Atom-1	Atom-2	Interatomic distance (Å)	Clash overlap (Å)
1:B:36:ILE:HG21	4:B:209:PG4:H62	1.54	0.89
1:A:180:SER:HB2	9:A:356:HOH:O	1.77	0.84
1:B:35:ILE:CD1	2:B:201:BNG:H3'2	2.11	0.81
1:A:164:VAL:HG13	4:A:206:PG4:H71	1.65	0.76
1:B:36:ILE:CG2	4:B:209:PG4:H62	2.16	0.76

There are no symmetry-related clashes.

5.3 Torsion angles [i](#)

5.3.1 Protein backbone [i](#)

In the following table, the Percentiles column shows the percent Ramachandran outliers of the chain as a percentile score with respect to all X-ray entries followed by that with respect to entries of similar resolution.

The Analysed column shows the number of residues for which the backbone conformation was analysed, and the total number of residues.

Mol	Chain	Analysed	Favoured	Allowed	Outliers	Percentiles	
1	A	175/182 (96%)	171 (98%)	4 (2%)	0	100	100
1	B	175/182 (96%)	173 (99%)	2 (1%)	0	100	100

Continued on next page...

Continued from previous page...

Mol	Chain	Analysed	Favoured	Allowed	Outliers	Percentiles	
All	All	350/364 (96%)	344 (98%)	6 (2%)	0	100	100

There are no Ramachandran outliers to report.

5.3.2 Protein sidechains [i](#)

In the following table, the Percentiles column shows the percent sidechain outliers of the chain as a percentile score with respect to all X-ray entries followed by that with respect to entries of similar resolution.

The Analysed column shows the number of residues for which the sidechain conformation was analysed, and the total number of residues.

Mol	Chain	Analysed	Rotameric	Outliers	Percentiles	
1	A	141/146 (97%)	138 (98%)	3 (2%)	47	52
1	B	141/146 (97%)	139 (99%)	2 (1%)	59	66
All	All	282/292 (97%)	277 (98%)	5 (2%)	51	58

All (5) residues with a non-rotameric sidechain are listed below:

Mol	Chain	Res	Type
1	A	7	ASN
1	A	11	LEU
1	A	66	LEU
1	B	11	LEU
1	B	171	LYS

Sometimes sidechains can be flipped to improve hydrogen bonding and reduce clashes. All (1) such sidechains are listed below:

Mol	Chain	Res	Type
1	A	179	HIS

5.3.3 RNA [i](#)

There are no RNA molecules in this entry.

5.4 Non-standard residues in protein, DNA, RNA chains [i](#)

There are no non-standard protein/DNA/RNA residues in this entry.

5.5 Carbohydrates [i](#)

There are no oligosaccharides in this entry.

5.6 Ligand geometry [i](#)

48 ligands are modelled in this entry.

In the following table, the Counts columns list the number of bonds (or angles) for which Mogul statistics could be retrieved, the number of bonds (or angles) that are observed in the model and the number of bonds (or angles) that are defined in the Chemical Component Dictionary. The Link column lists molecule types, if any, to which the group is linked. The Z score for a bond length (or angle) is the number of standard deviations the observed value is removed from the expected value. A bond length (or angle) with $|Z| > 2$ is considered an outlier worth inspection. RMSZ is the root-mean-square of all Z scores of the bond lengths (or angles).

Mol	Type	Chain	Res	Link	Bond lengths			Bond angles		
					Counts	RMSZ	# Z > 2	Counts	RMSZ	# Z > 2
5	PEG	B	218	-	6,6,6	0.58	0	5,5,5	0.39	0
5	PEG	A	214	-	6,6,6	0.59	0	5,5,5	0.34	0
5	PEG	A	213	-	6,6,6	0.60	0	5,5,5	0.56	0
5	PEG	B	216	-	6,6,6	0.58	0	5,5,5	0.48	0
4	PG4	A	209	-	12,12,12	0.77	0	11,11,11	0.24	0
4	PG4	A	207	-	12,12,12	0.73	0	11,11,11	0.29	0
4	PG4	A	208	-	12,12,12	0.73	0	11,11,11	0.33	0
2	BNG	B	205	-	21,21,21	0.89	0	26,26,26	0.88	2 (7%)
7	P6G	A	220[B]	-	18,18,18	0.75	0	17,17,17	0.20	0
5	PEG	B	210	-	6,6,6	0.59	0	5,5,5	0.37	0
2	BNG	B	203	-	21,21,21	0.90	1 (4%)	26,26,26	1.28	2 (7%)
4	PG4	B	207	-	12,12,12	0.76	0	11,11,11	0.34	0
5	PEG	A	212	-	6,6,6	0.56	0	5,5,5	0.53	0
3	26G	A	203	-	19,19,19	1.16	2 (10%)	25,25,25	1.40	3 (12%)
4	PG4	A	206	-	12,12,12	0.73	0	11,11,11	0.42	0
7	P6G	B	226	-	18,18,18	0.78	0	17,17,17	0.24	0
8	1PE	B	222	-	15,15,15	0.71	0	14,14,14	0.44	0
2	BNG	A	201	-	21,21,21	0.93	1 (4%)	26,26,26	1.50	3 (11%)
7	P6G	A	218	-	18,18,18	0.83	0	17,17,17	0.34	0
5	PEG	A	216	-	6,6,6	0.57	0	5,5,5	0.55	0
2	BNG	B	202	-	21,21,21	0.79	0	26,26,26	1.30	4 (15%)

Mol	Type	Chain	Res	Link	Bond lengths			Bond angles		
					Counts	RMSZ	# Z > 2	Counts	RMSZ	# Z > 2
3	26G	B	206	-	19,19,19	1.06	2 (10%)	25,25,25	1.31	3 (12%)
5	PEG	A	215	-	6,6,6	0.60	0	5,5,5	0.48	0
7	P6G	B	225	-	18,18,18	0.72	0	17,17,17	0.32	0
6	PG0	A	217	-	7,7,7	0.31	0	6,6,6	0.42	0
4	PG4	A	204	-	12,12,12	0.72	0	11,11,11	0.37	0
5	PEG	B	215	-	6,6,6	0.57	0	5,5,5	0.30	0
5	PEG	B	212	-	6,6,6	0.58	0	5,5,5	0.40	0
5	PEG	B	221	-	6,6,6	0.59	0	5,5,5	0.42	0
2	BNG	B	201	-	21,21,21	0.85	0	26,26,26	1.03	2 (7%)
7	P6G	A	219	-	18,18,18	0.75	0	17,17,17	0.31	0
5	PEG	B	211	-	6,6,6	0.64	0	5,5,5	0.29	0
5	PEG	B	214	-	6,6,6	0.59	0	5,5,5	0.28	0
7	P6G	A	220[A]	-	18,18,18	0.73	0	17,17,17	0.24	0
4	PG4	A	210	-	12,12,12	0.73	0	11,11,11	0.37	0
4	PG4	A	211	-	12,12,12	0.74	0	11,11,11	0.35	0
2	BNG	A	202	-	21,21,21	0.78	0	26,26,26	1.14	3 (11%)
6	PG0	B	223	-	7,7,7	0.33	0	6,6,6	0.29	0
5	PEG	B	213	-	6,6,6	0.61	0	5,5,5	0.77	0
5	PEG	B	217	-	6,6,6	0.57	0	5,5,5	0.40	0
5	PEG	B	220	-	6,6,6	0.61	0	5,5,5	0.30	0
5	PEG	B	219	-	6,6,6	0.58	0	5,5,5	0.42	0
2	BNG	B	204	-	21,21,21	0.88	0	26,26,26	1.16	3 (11%)
4	PG4	B	209	-	12,12,12	0.74	0	11,11,11	0.32	0
4	PG4	B	208	-	12,12,12	0.76	0	11,11,11	0.35	0
7	P6G	B	224	-	18,18,18	0.77	0	17,17,17	0.24	0
7	P6G	A	221	-	18,18,18	0.70	0	17,17,17	0.43	0
4	PG4	A	205	-	12,12,12	0.73	0	11,11,11	0.47	0

In the following table, the Chirals column lists the number of chiral outliers, the number of chiral centers analysed, the number of these observed in the model and the number defined in the Chemical Component Dictionary. Similar counts are reported in the Torsion and Rings columns. '-' means no outliers of that kind were identified.

Mol	Type	Chain	Res	Link	Chirals	Torsions	Rings
5	PEG	B	218	-	-	2/4/4/4	-
5	PEG	A	214	-	-	2/4/4/4	-
5	PEG	A	213	-	-	3/4/4/4	-
5	PEG	B	216	-	-	2/4/4/4	-
4	PG4	A	209	-	-	5/10/10/10	-
4	PG4	A	207	-	-	4/10/10/10	-

Continued on next page...

Continued from previous page...

Mol	Type	Chain	Res	Link	Chirals	Torsions	Rings
4	PG4	A	208	-	-	3/10/10/10	-
2	BNG	B	205	-	-	0/12/32/32	0/1/1/1
7	P6G	A	220[B]	-	-	8/16/16/16	-
5	PEG	B	210	-	-	1/4/4/4	-
2	BNG	B	203	-	-	4/12/32/32	0/1/1/1
4	PG4	B	207	-	-	3/10/10/10	-
5	PEG	A	212	-	-	0/4/4/4	-
3	26G	A	203	-	-	2/7/7/7	0/2/2/2
4	PG4	A	206	-	-	5/10/10/10	-
7	P6G	B	226	-	-	9/16/16/16	-
8	1PE	B	222	-	-	9/13/13/13	-
2	BNG	A	201	-	-	7/12/32/32	0/1/1/1
7	P6G	A	218	-	-	9/16/16/16	-
5	PEG	A	216	-	-	3/4/4/4	-
2	BNG	B	202	-	-	6/12/32/32	0/1/1/1
3	26G	B	206	-	-	2/7/7/7	0/2/2/2
5	PEG	A	215	-	-	1/4/4/4	-
7	P6G	B	225	-	-	9/16/16/16	-
6	PG0	A	217	-	-	3/5/5/5	-
4	PG4	A	204	-	-	5/10/10/10	-
5	PEG	B	215	-	-	0/4/4/4	-
5	PEG	B	212	-	-	0/4/4/4	-
5	PEG	B	221	-	-	3/4/4/4	-
2	BNG	B	201	-	-	0/12/32/32	0/1/1/1
7	P6G	A	219	-	-	12/16/16/16	-
5	PEG	B	211	-	-	3/4/4/4	-
5	PEG	B	214	-	-	0/4/4/4	-
7	P6G	A	220[A]	-	-	10/16/16/16	-
4	PG4	A	210	-	-	4/10/10/10	-
4	PG4	A	211	-	-	7/10/10/10	-
2	BNG	A	202	-	-	5/12/32/32	0/1/1/1
6	PG0	B	223	-	-	1/5/5/5	-
5	PEG	B	213	-	-	3/4/4/4	-
5	PEG	B	217	-	-	1/4/4/4	-
5	PEG	B	220	-	-	3/4/4/4	-
5	PEG	B	219	-	-	2/4/4/4	-

Continued on next page...

Continued from previous page...

Mol	Type	Chain	Res	Link	Chirals	Torsions	Rings
2	BNG	B	204	-	-	2/12/32/32	0/1/1/1
4	PG4	B	209	-	-	5/10/10/10	-
4	PG4	B	208	-	-	5/10/10/10	-
7	P6G	B	224	-	-	7/16/16/16	-
7	P6G	A	221	-	-	9/16/16/16	-
4	PG4	A	205	-	-	4/10/10/10	-

The worst 5 of 6 bond length outliers are listed below:

Mol	Chain	Res	Type	Atoms	Z	Observed(Å)	Ideal(Å)
3	A	203	26G	C4A-N4A	2.84	1.41	1.34
3	B	206	26G	C4A-N4A	2.72	1.41	1.34
3	A	203	26G	C6A-C5A	2.62	1.42	1.37
3	B	206	26G	C6A-C5A	2.46	1.42	1.37
2	A	201	BNG	O1-C1	2.32	1.44	1.40

The worst 5 of 25 bond angle outliers are listed below:

Mol	Chain	Res	Type	Atoms	Z	Observed(°)	Ideal(°)
2	A	201	BNG	O1-C1-C2	4.99	115.85	108.27
2	A	201	BNG	C1-O5-C5	-3.77	106.36	113.72
2	B	203	BNG	O1-C1-C2	3.62	113.77	108.27
2	B	202	BNG	C1-O5-C5	-3.42	107.05	113.72
3	A	203	26G	C5A-C6A-N1A	-3.36	118.36	123.83

There are no chirality outliers.

5 of 193 torsion outliers are listed below:

Mol	Chain	Res	Type	Atoms
2	A	201	BNG	C2-C1-O1-C1'
6	A	217	PG0	C1-C2-O1-C3
7	A	221	P6G	C11-C12-O13-C14
7	A	219	P6G	C18-C17-O16-C15
4	B	209	PG4	C4-C3-O2-C2

There are no ring outliers.

38 monomers are involved in 87 short contacts:

Mol	Chain	Res	Type	Clashes	Symm-Clashes
5	B	218	PEG	1	0

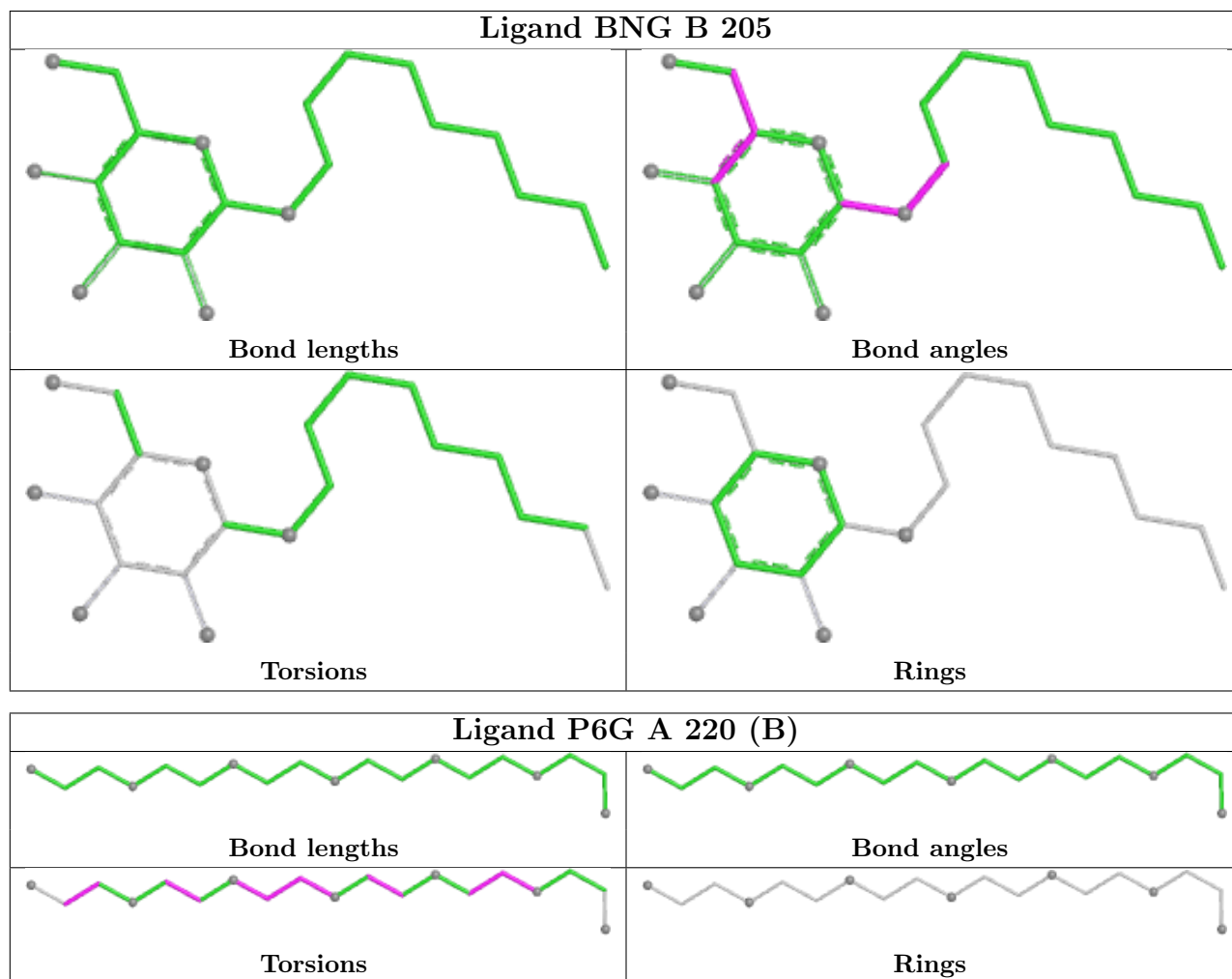
Continued on next page...

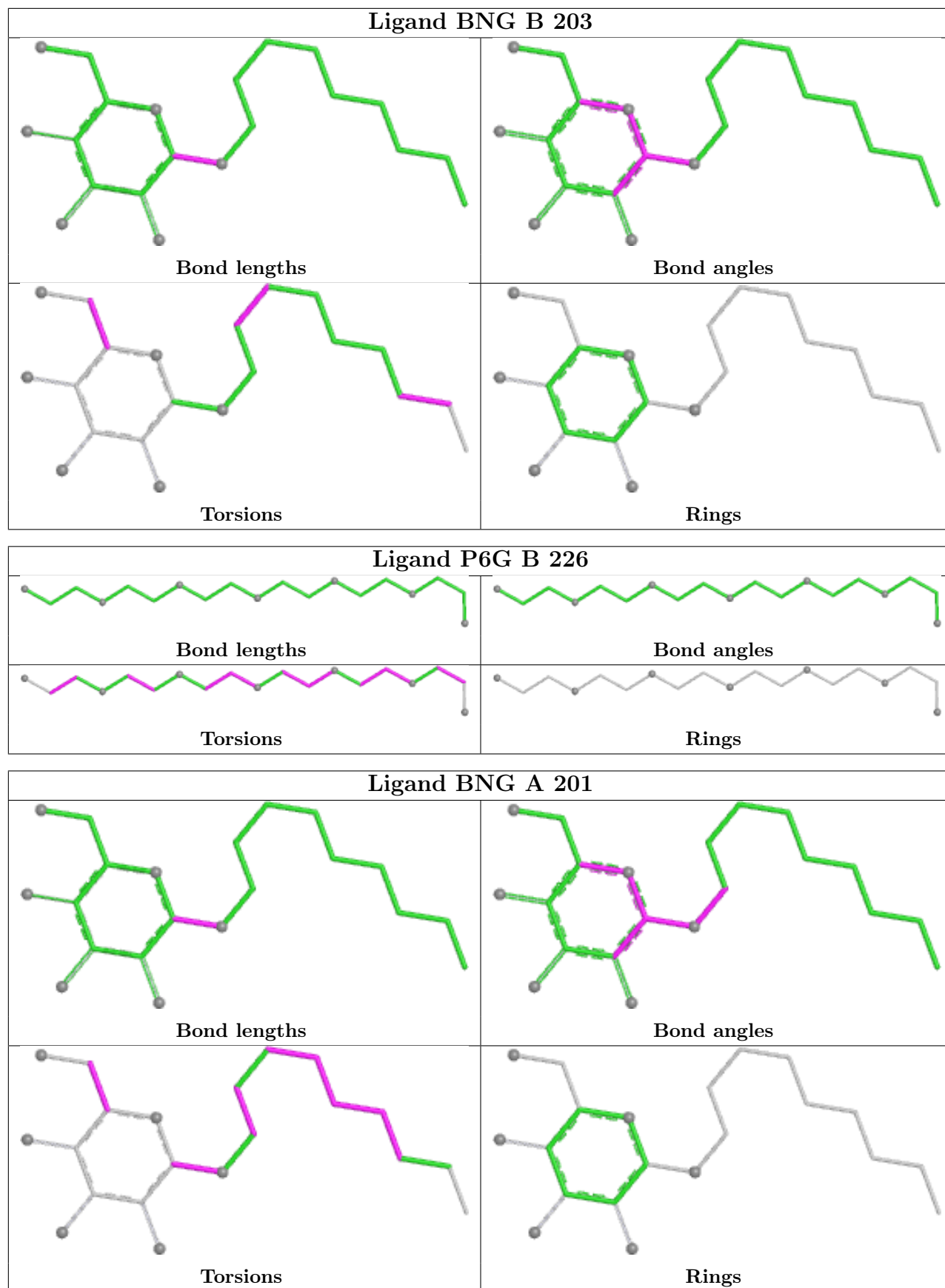
Continued from previous page...

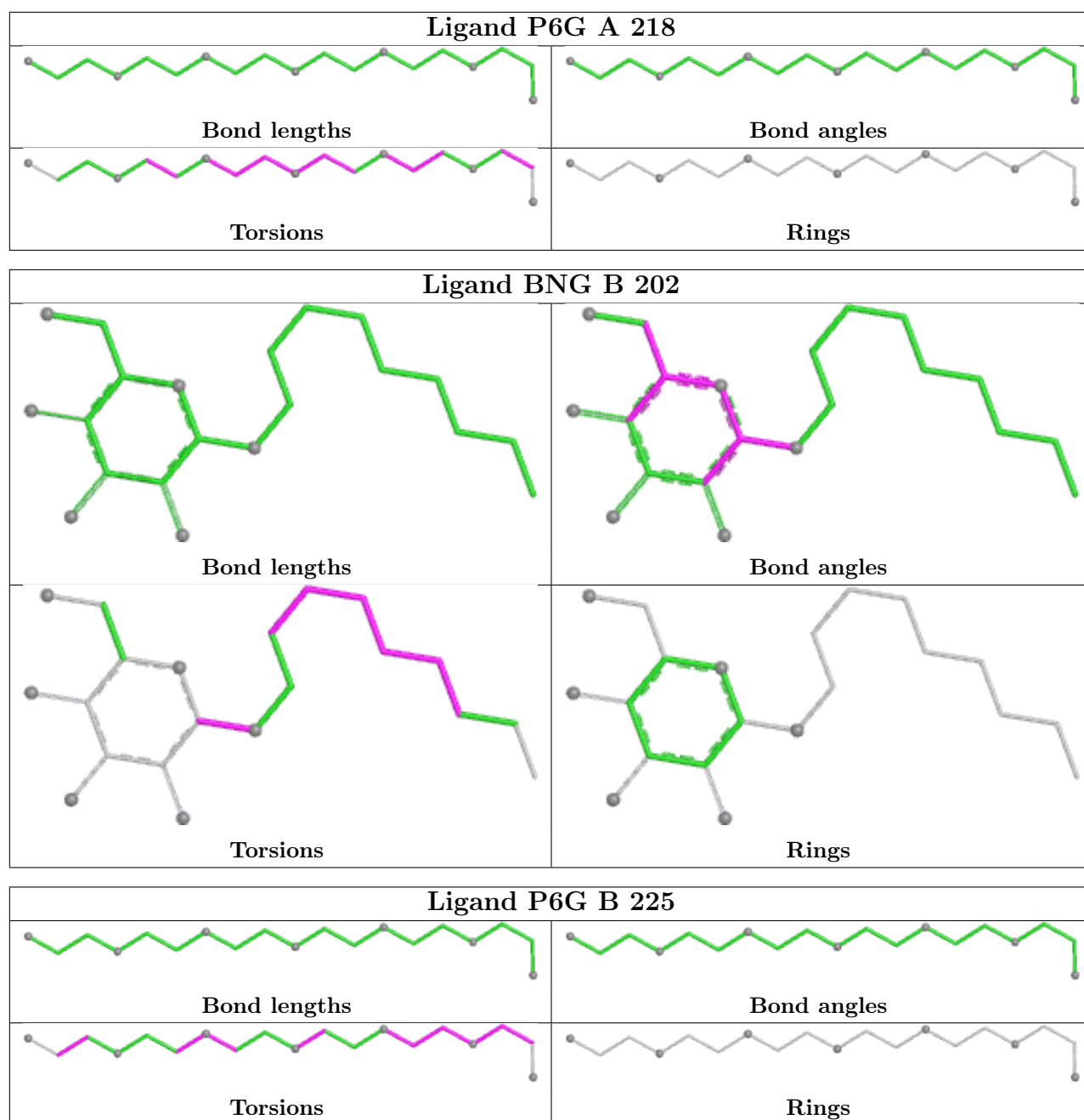
Mol	Chain	Res	Type	Clashes	Symm-Clashes
5	A	214	PEG	1	0
5	A	213	PEG	6	0
5	B	216	PEG	3	0
4	A	209	PG4	3	0
4	A	208	PG4	2	0
7	A	220[B]	P6G	1	0
5	B	210	PEG	3	0
2	B	203	BNG	1	0
4	B	207	PG4	1	0
4	A	206	PG4	2	0
7	B	226	P6G	3	0
8	B	222	1PE	3	0
2	A	201	BNG	1	0
7	A	218	P6G	3	0
5	A	216	PEG	2	0
2	B	202	BNG	3	0
3	B	206	26G	1	0
7	B	225	P6G	2	0
6	A	217	PG0	3	0
4	A	204	PG4	2	0
5	B	212	PEG	2	0
5	B	221	PEG	2	0
2	B	201	BNG	5	0
7	A	219	P6G	1	0
5	B	214	PEG	2	0
7	A	220[A]	P6G	3	0
4	A	210	PG4	4	0
4	A	211	PG4	7	0
2	A	202	BNG	4	0
5	B	213	PEG	2	0
5	B	217	PEG	4	0
5	B	220	PEG	2	0
5	B	219	PEG	2	0
4	B	209	PG4	10	0
7	B	224	P6G	2	0
7	A	221	P6G	1	0
4	A	205	PG4	2	0

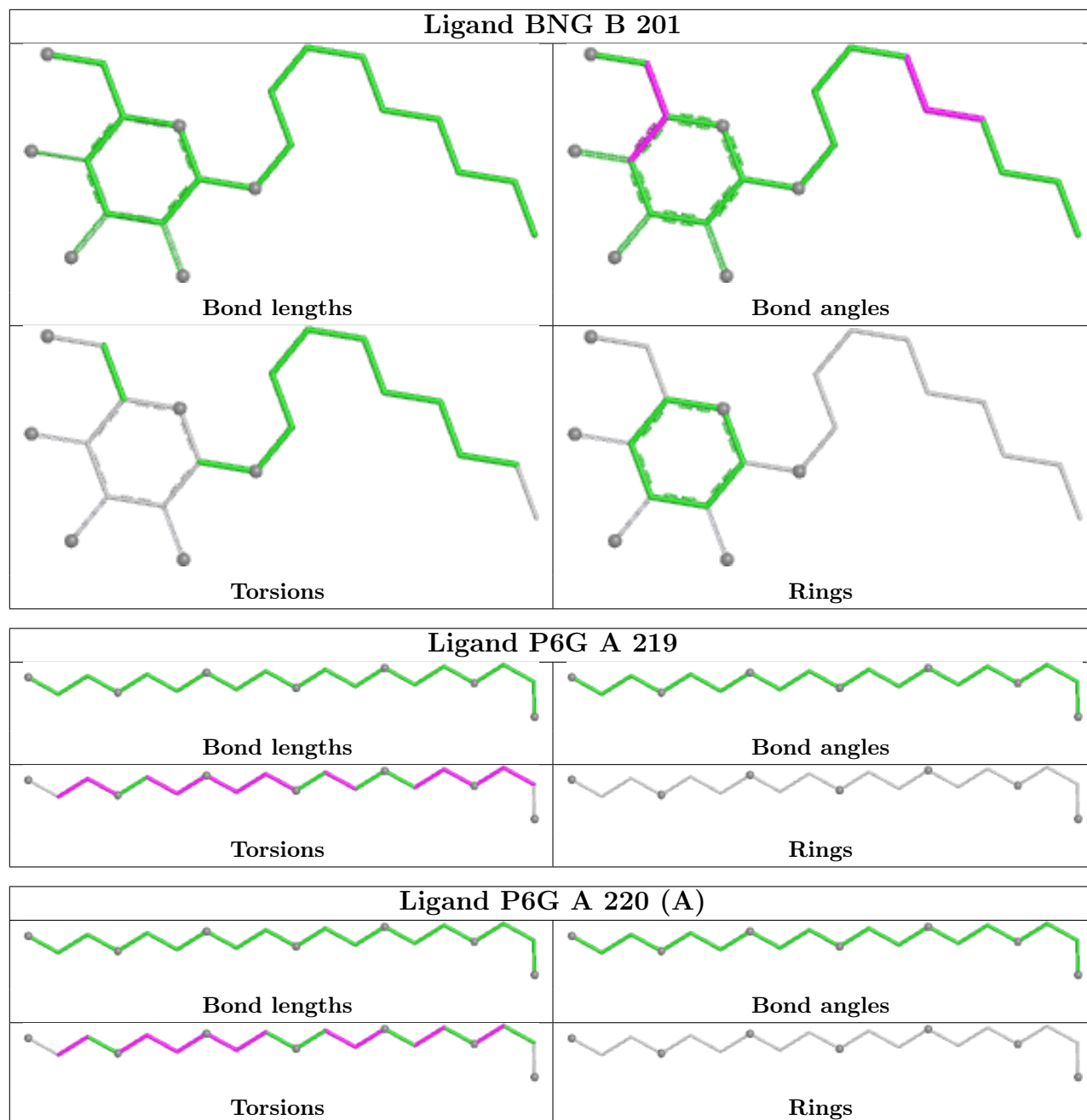
The following is a two-dimensional graphical depiction of Mogul quality analysis of bond lengths, bond angles, torsion angles, and ring geometry for all instances of the Ligand of Interest. In addition, ligands with molecular weight > 250 and outliers as shown on the validation Tables will also be included. For torsion angles, if less than 5% of the Mogul distribution of torsion angles is within 10 degrees of the torsion angle in question, then that torsion angle is considered an outlier.

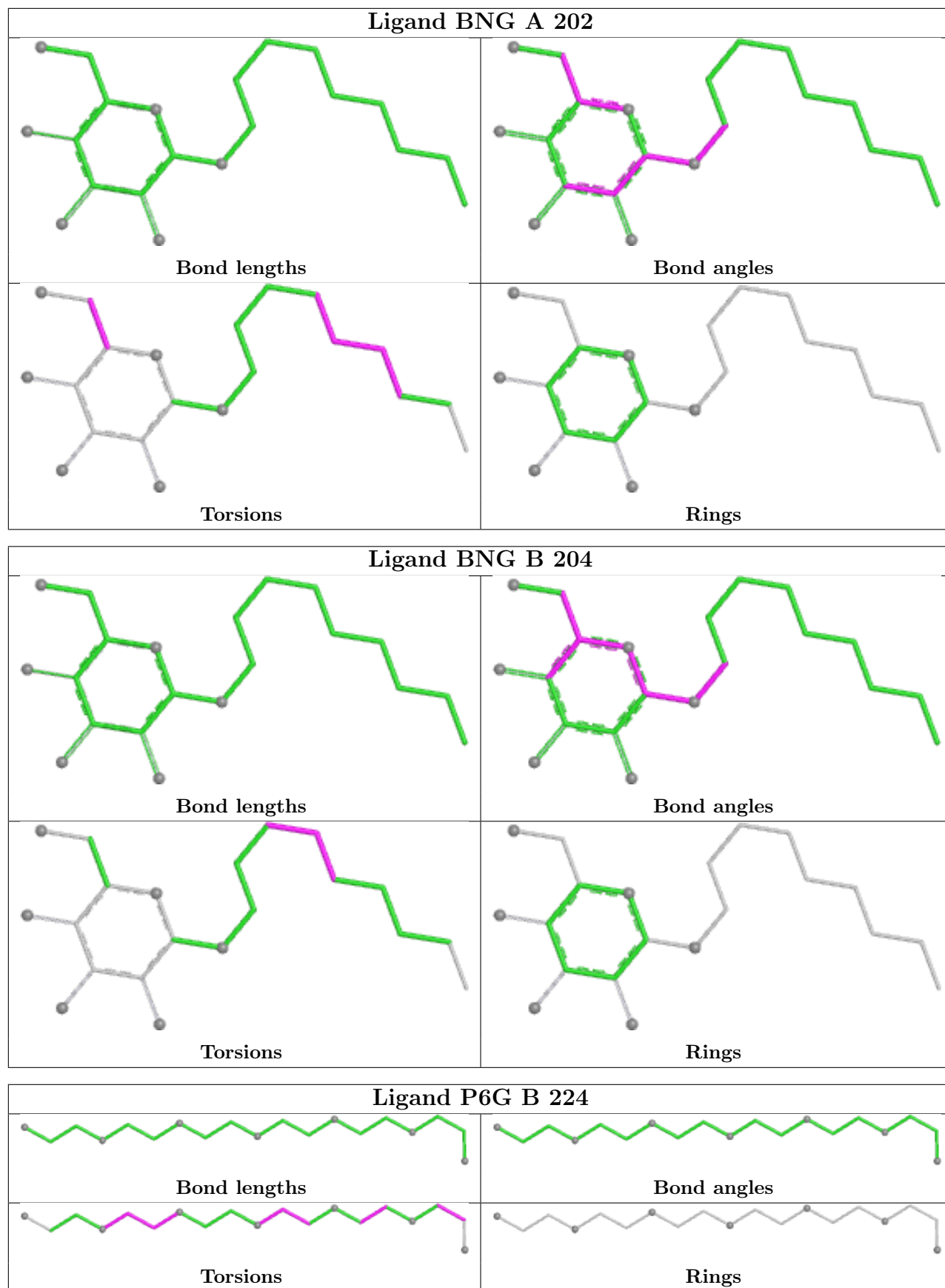
Any bond that is central to one or more torsion angles identified as an outlier by Mogul will be highlighted in the graph. For rings, the root-mean-square deviation (RMSD) between the ring in question and similar rings identified by Mogul is calculated over all ring torsion angles. If the average RMSD is greater than 60 degrees and the minimal RMSD between the ring in question and any Mogul-identified rings is also greater than 60 degrees, then that ring is considered an outlier. The outliers are highlighted in purple. The color gray indicates Mogul did not find sufficient equivalents in the CSD to analyse the geometry.

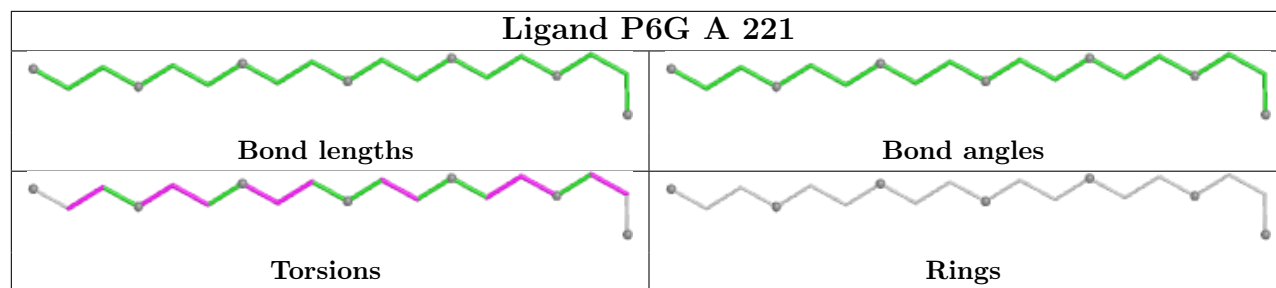












5.7 Other polymers [i](#)

There are no such residues in this entry.

5.8 Polymer linkage issues [i](#)

There are no chain breaks in this entry.

6 Fit of model and data [i](#)

6.1 Protein, DNA and RNA chains [i](#)

In the following table, the column labelled '#RSRZ > 2' contains the number (and percentage) of RSRZ outliers, followed by percent RSRZ outliers for the chain as percentile scores relative to all X-ray entries and entries of similar resolution. The OWAB column contains the minimum, median, 95th percentile and maximum values of the occupancy-weighted average B-factor per residue. The column labelled 'Q < 0.9' lists the number of (and percentage) of residues with an average occupancy less than 0.9.

Mol	Chain	Analysed	<RSRZ>	#RSRZ>2	OWAB(Å ²)	Q<0.9
1	A	176/182 (96%)	-1.41	0 100 100	11, 29, 51, 71	1 (0%)
1	B	177/182 (97%)	-1.39	0 100 100	15, 29, 54, 73	1 (0%)
All	All	353/364 (96%)	-1.40	0 100 100	11, 29, 52, 73	2 (0%)

There are no RSRZ outliers to report.

6.2 Non-standard residues in protein, DNA, RNA chains [i](#)

There are no non-standard protein/DNA/RNA residues in this entry.

6.3 Carbohydrates [i](#)

There are no oligosaccharides in this entry.

6.4 Ligands [i](#)

In the following table, the Atoms column lists the number of modelled atoms in the group and the number defined in the chemical component dictionary. The B-factors column lists the minimum, median, 95th percentile and maximum values of B factors of atoms in the group. The column labelled 'Q < 0.9' lists the number of atoms with occupancy less than 0.9.

Mol	Type	Chain	Res	Atoms	RSCC	RSR	B-factors(Å ²)	Q<0.9
5	PEG	A	216	7/7	0.95	0.06	59,68,74,74	0
4	PG4	A	209	13/13	0.97	0.05	48,71,82,85	0
4	PG4	A	210	13/13	0.97	0.09	44,58,83,85	0
4	PG4	A	208	13/13	0.97	0.08	45,84,90,91	0
5	PEG	B	218	7/7	0.97	0.06	75,78,86,90	0
7	P6G	A	219	19/19	0.97	0.07	51,63,74,79	0
8	1PE	B	222	16/16	0.97	0.08	33,81,86,86	0

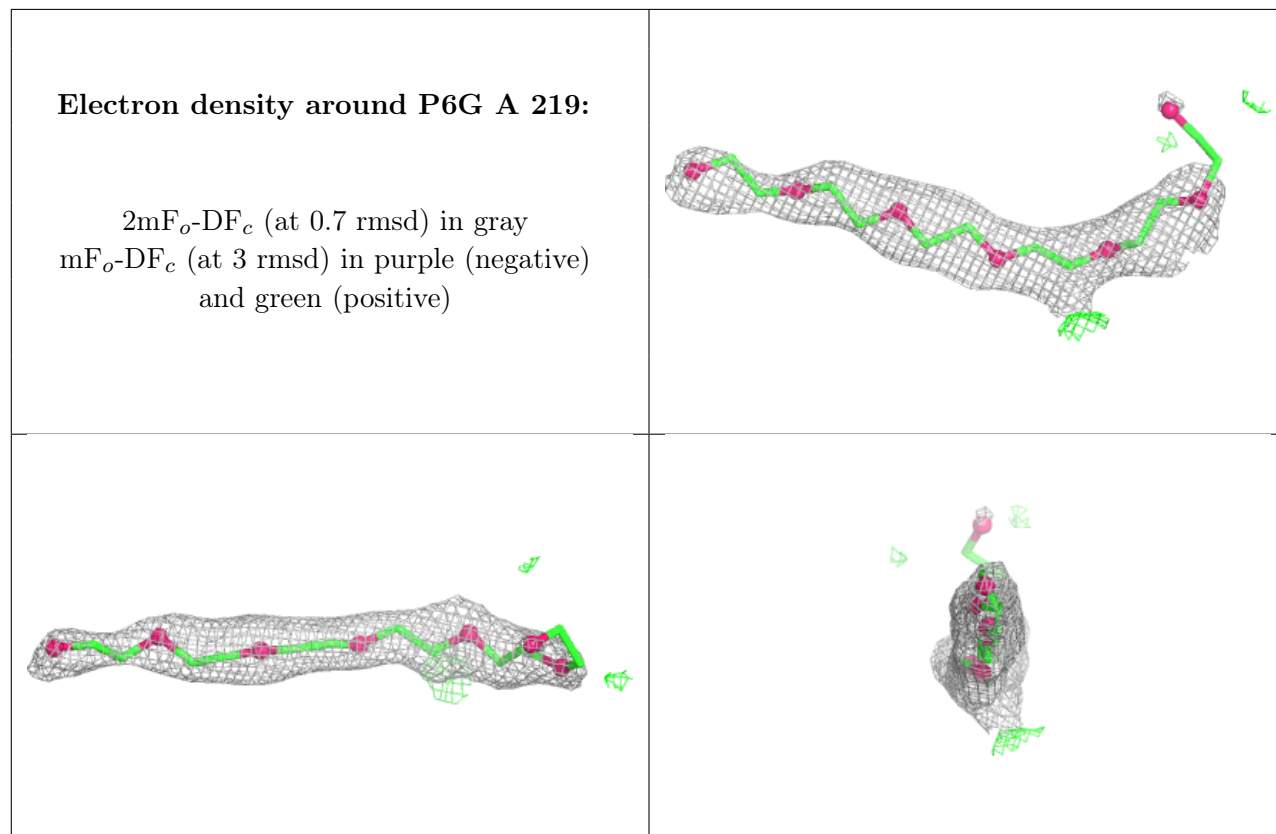
Continued on next page...

Continued from previous page...

Mol	Type	Chain	Res	Atoms	RSCC	RSR	B-factors(Å ²)	Q<0.9
4	PG4	A	211	13/13	0.98	0.06	55,64,75,75	0
4	PG4	B	207	13/13	0.98	0.08	52,61,69,73	13
4	PG4	B	208	13/13	0.98	0.07	45,75,85,85	0
4	PG4	B	209	13/13	0.98	0.08	46,60,68,69	0
5	PEG	A	212	7/7	0.98	0.06	37,46,60,72	0
5	PEG	A	213	7/7	0.98	0.05	33,43,48,51	0
5	PEG	A	214	7/7	0.98	0.07	77,80,83,85	0
4	PG4	A	207	13/13	0.98	0.06	52,68,74,75	0
5	PEG	B	212	7/7	0.98	0.09	69,71,75,75	0
5	PEG	B	215	7/7	0.98	0.04	55,62,78,79	0
5	PEG	B	216	7/7	0.98	0.05	43,67,82,84	0
2	BNG	B	203	21/21	0.98	0.06	45,59,78,82	0
5	PEG	B	221	7/7	0.98	0.07	64,67,71,73	0
6	PG0	A	217	8/8	0.98	0.07	26,46,54,55	0
6	PG0	B	223	8/8	0.98	0.08	68,76,77,82	0
4	PG4	A	204	13/13	0.98	0.07	64,71,78,80	0
7	P6G	B	226	19/19	0.98	0.08	69,79,92,94	0
4	PG4	A	206	13/13	0.98	0.06	47,73,82,87	0
5	PEG	B	210	7/7	0.99	0.03	54,56,58,60	0
5	PEG	B	211	7/7	0.99	0.04	49,54,75,78	0
2	BNG	B	205	21/21	0.99	0.04	35,46,67,70	0
5	PEG	B	213	7/7	0.99	0.05	37,54,63,65	0
5	PEG	B	214	7/7	0.99	0.06	67,72,73,75	0
3	26G	A	203	18/18	0.99	0.03	15,21,38,45	0
3	26G	B	206	18/18	0.99	0.03	14,21,39,45	0
5	PEG	B	217	7/7	0.99	0.05	66,71,74,75	0
2	BNG	A	202	21/21	0.99	0.04	34,50,88,94	0
5	PEG	B	219	7/7	0.99	0.04	63,71,78,78	0
5	PEG	B	220	7/7	0.99	0.05	59,66,74,74	0
4	PG4	A	205	13/13	0.99	0.05	36,54,74,77	0
2	BNG	B	201	21/21	0.99	0.03	18,31,42,51	0
2	BNG	B	202	21/21	0.99	0.04	28,52,63,63	0
7	P6G	A	218	19/19	0.99	0.04	55,64,70,71	0
2	BNG	A	201	21/21	0.99	0.04	55,70,79,81	21
7	P6G	A	220[A]	19/19	0.99	0.06	35,54,60,60	19
7	P6G	A	220[B]	19/19	0.99	0.06	41,55,60,60	19
7	P6G	A	221	19/19	0.99	0.04	29,48,72,73	0
7	P6G	B	224	19/19	0.99	0.05	49,69,79,82	0
7	P6G	B	225	19/19	0.99	0.04	34,47,78,79	0
5	PEG	A	215	7/7	0.99	0.06	46,51,60,61	7
2	BNG	B	204	21/21	0.99	0.04	27,48,63,75	0

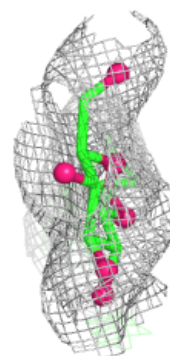
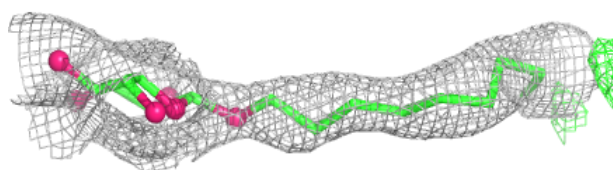
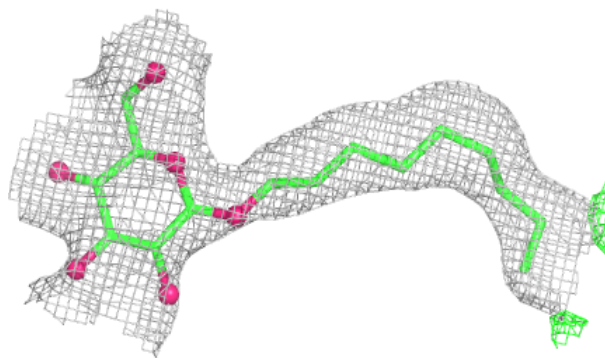
The following is a graphical depiction of the model fit to experimental electron density of all

instances of the Ligand of Interest. In addition, ligands with molecular weight > 250 and outliers as shown on the geometry validation Tables will also be included. Each fit is shown from different orientation to approximate a three-dimensional view.

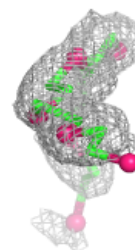
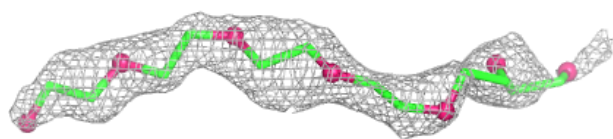
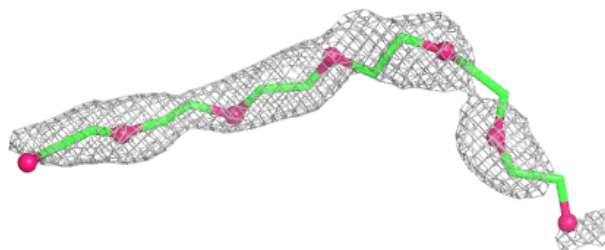


Electron density around BNG B 203:

$2mF_o-DF_c$ (at 0.7 rmsd) in gray
 mF_o-DF_c (at 3 rmsd) in purple (negative)
and green (positive)

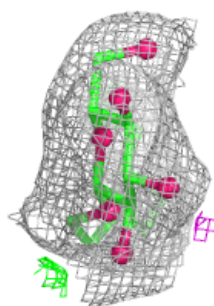
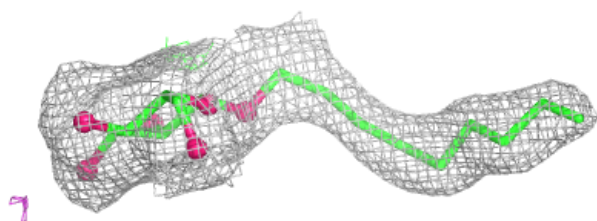
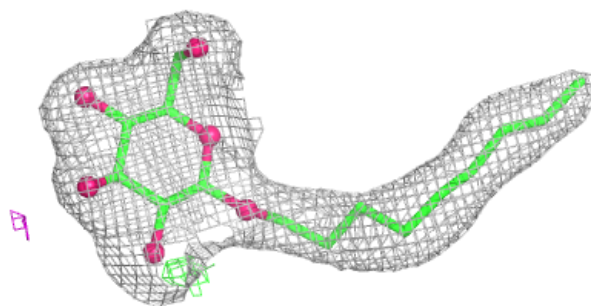
**Electron density around P6G B 226:**

$2mF_o-DF_c$ (at 0.7 rmsd) in gray
 mF_o-DF_c (at 3 rmsd) in purple (negative)
and green (positive)

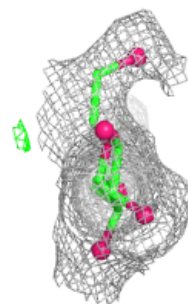
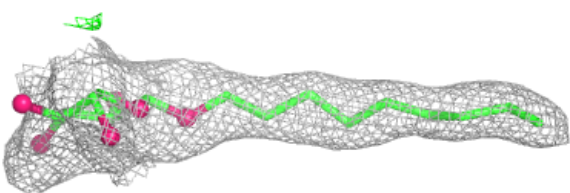
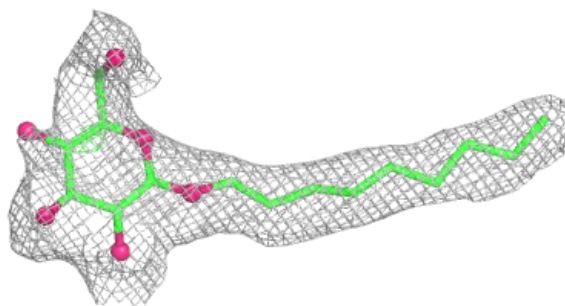


Electron density around BNG B 205:

$2mF_o-DF_c$ (at 0.7 rmsd) in gray
 mF_o-DF_c (at 3 rmsd) in purple (negative)
and green (positive)

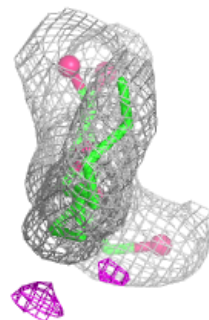
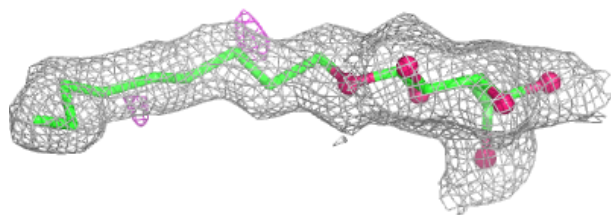
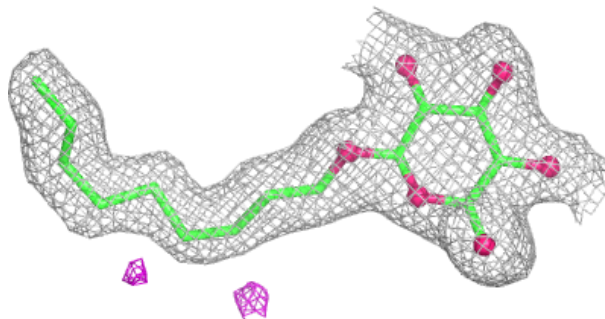
**Electron density around BNG A 202:**

$2mF_o-DF_c$ (at 0.7 rmsd) in gray
 mF_o-DF_c (at 3 rmsd) in purple (negative)
and green (positive)

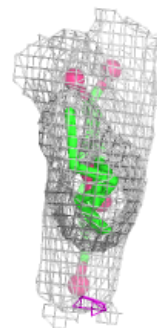
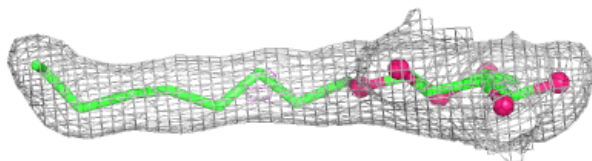
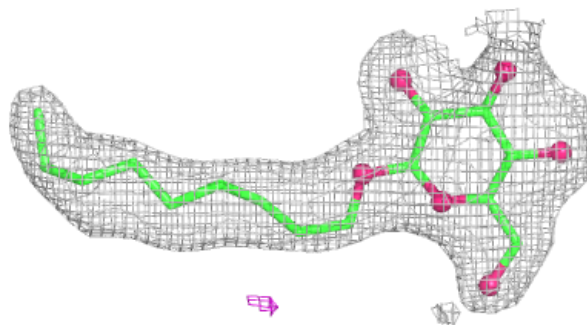


Electron density around BNG B 201:

$2mF_o-DF_c$ (at 0.7 rmsd) in gray
 mF_o-DF_c (at 3 rmsd) in purple (negative)
and green (positive)

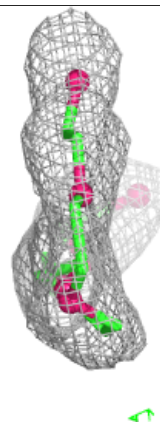
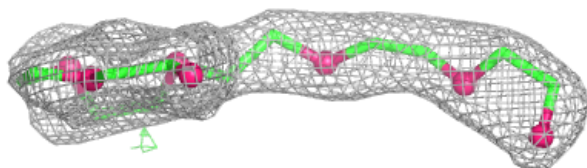
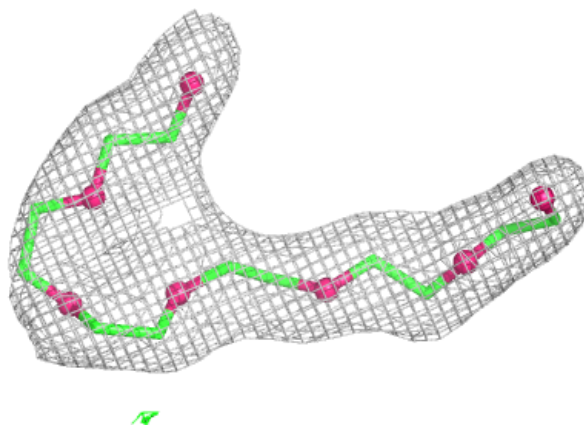
**Electron density around BNG B 202:**

$2mF_o-DF_c$ (at 0.7 rmsd) in gray
 mF_o-DF_c (at 3 rmsd) in purple (negative)
and green (positive)

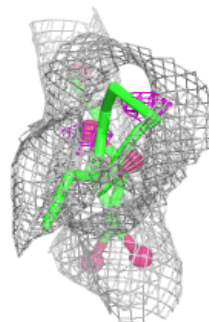
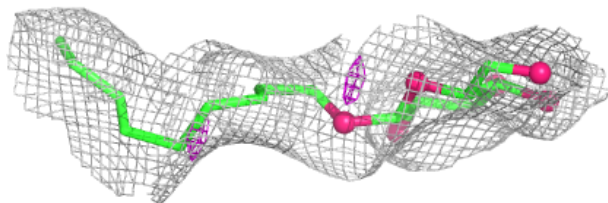
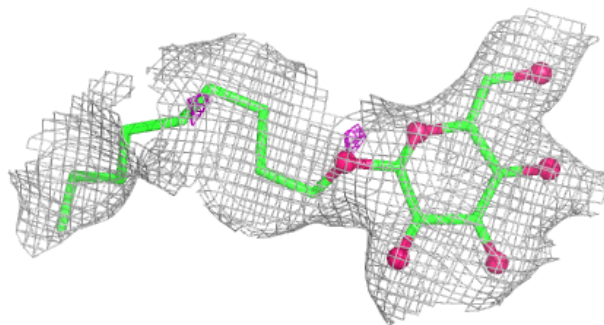


Electron density around P6G A 218:

$2mF_o-DF_c$ (at 0.7 rmsd) in gray
 mF_o-DF_c (at 3 rmsd) in purple (negative)
and green (positive)

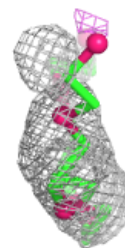
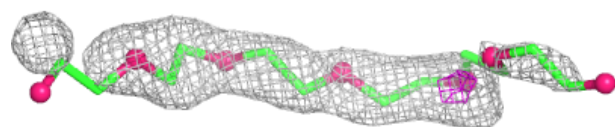
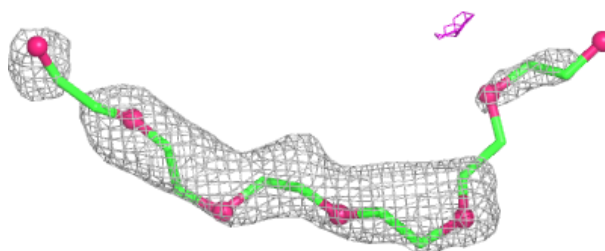
**Electron density around BNG A 201:**

$2mF_o-DF_c$ (at 0.7 rmsd) in gray
 mF_o-DF_c (at 3 rmsd) in purple (negative)
and green (positive)

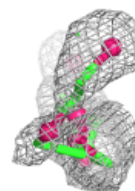
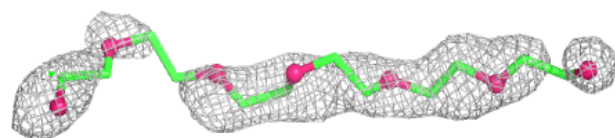
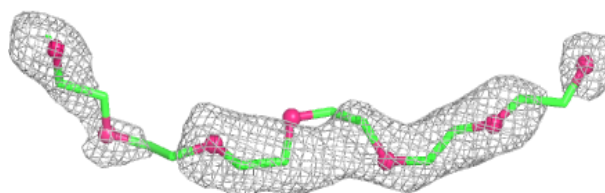


Electron density around P6G A 220 (A):

$2mF_o-DF_c$ (at 0.7 rmsd) in gray
 mF_o-DF_c (at 3 rmsd) in purple (negative)
and green (positive)

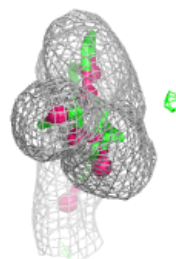
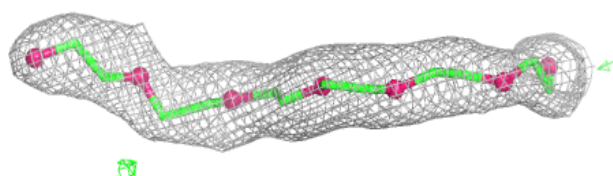
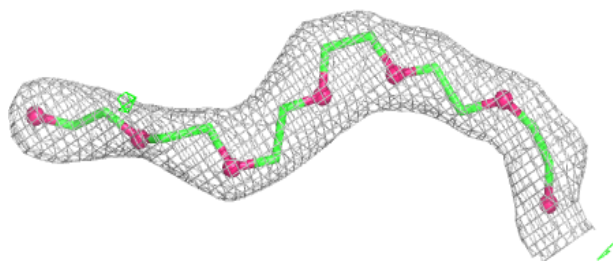
**Electron density around P6G A 220 (B):**

$2mF_o-DF_c$ (at 0.7 rmsd) in gray
 mF_o-DF_c (at 3 rmsd) in purple (negative)
and green (positive)

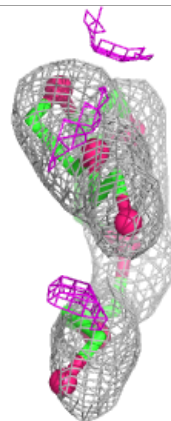
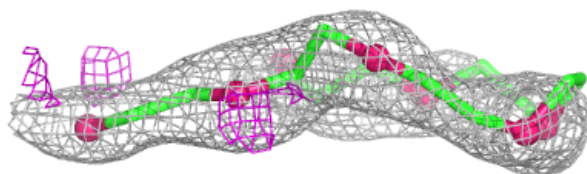
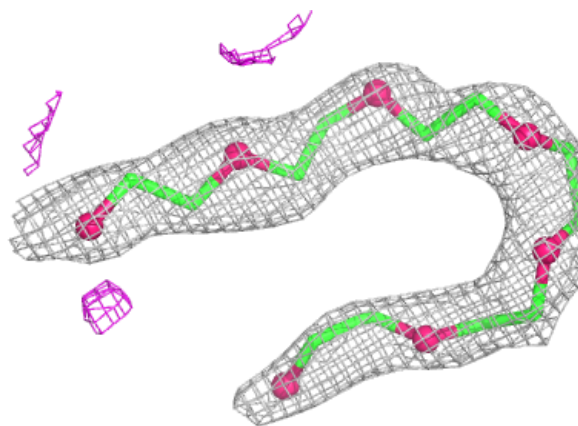


Electron density around P6G A 221:

$2mF_o-DF_c$ (at 0.7 rmsd) in gray
 mF_o-DF_c (at 3 rmsd) in purple (negative)
and green (positive)

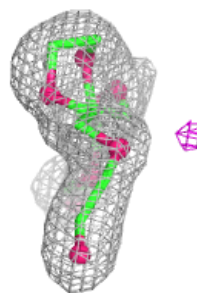
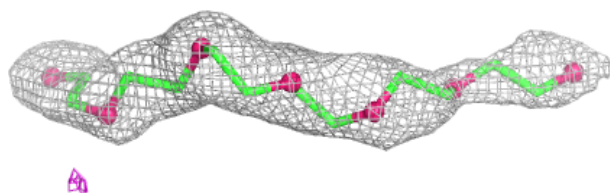
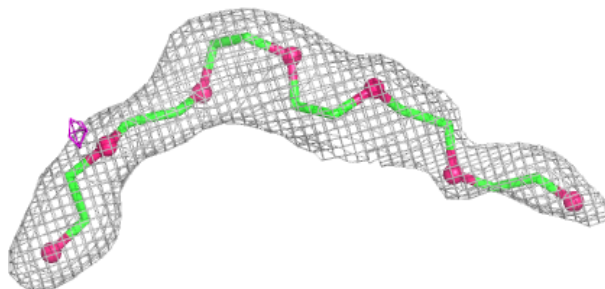
**Electron density around P6G B 224:**

$2mF_o-DF_c$ (at 0.7 rmsd) in gray
 mF_o-DF_c (at 3 rmsd) in purple (negative)
and green (positive)

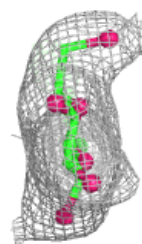
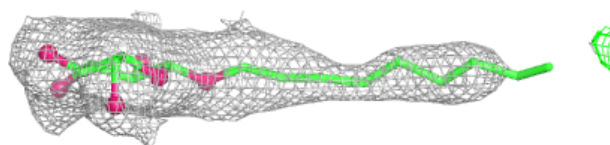
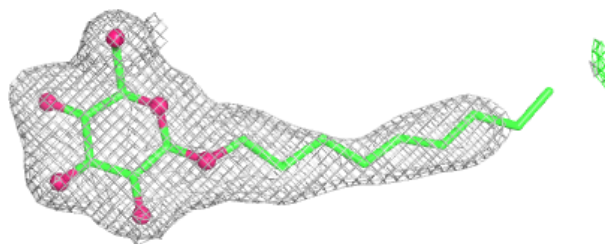


Electron density around P6G B 225:

$2mF_o-DF_c$ (at 0.7 rmsd) in gray
 mF_o-DF_c (at 3 rmsd) in purple (negative)
and green (positive)

**Electron density around BNG B 204:**

$2mF_o-DF_c$ (at 0.7 rmsd) in gray
 mF_o-DF_c (at 3 rmsd) in purple (negative)
and green (positive)



6.5 Other polymers [i](#)

There are no such residues in this entry.