



# wwPDB X-ray Structure Validation Summary Report ⓘ

Mar 8, 2026 – 04:42 PM UTC

PDB ID : 4MGR / pdb\_00004mgr  
Title : The crystal structure of Bacillus subtilis GabR, an autorepressor and PLP- and GABA-dependent transcriptional activator of gabT  
Authors : Wu, R.; Edayathumangalam, R.; Garcia, R.; Wang, Y.; Wang, W.; Kreinbring, C.A.; Bach, A.; Liao, J.; Stone, T.; Terwilliger, T.; Hoang, Q.Q.; Belitsky, B.R.; Petsko, G.A.; Ringe, D.; Liu, D.  
Deposited on : 2013-08-28  
Resolution : 2.55 Å(reported)

This is a wwPDB X-ray Structure Validation Summary Report for a publicly released PDB entry.

We welcome your comments at [validation@mail.wwpdb.org](mailto:validation@mail.wwpdb.org)

A user guide is available at

<https://www.wwpdb.org/validation/2017/XrayValidationReportHelp>

with specific help available everywhere you see the ⓘ symbol.

The types of validation reports are described at

<http://www.wwpdb.org/validation/2017/FAQs#types>.

---

The following versions of software and data (see [references ⓘ](#)) were used in the production of this report:

MolProbity : 4-5-2 with Phenix2.0  
Mogul : 2022.3.0, CSD as543be (2022)  
Xtriage (Phenix) : 2.0  
EDS : 3.0  
Percentile statistics : 20250101.v01 (using entries in the PDB archive January 1st 2025)  
CCP4 : 9.0.010 (Gargrove)  
Density-Fitness : 1.0.12  
Ideal geometry (proteins) : Engh & Huber (2001)  
Ideal geometry (DNA, RNA) : Parkinson et al. (1996)  
Validation Pipeline (wwPDB-VP) : 2.49

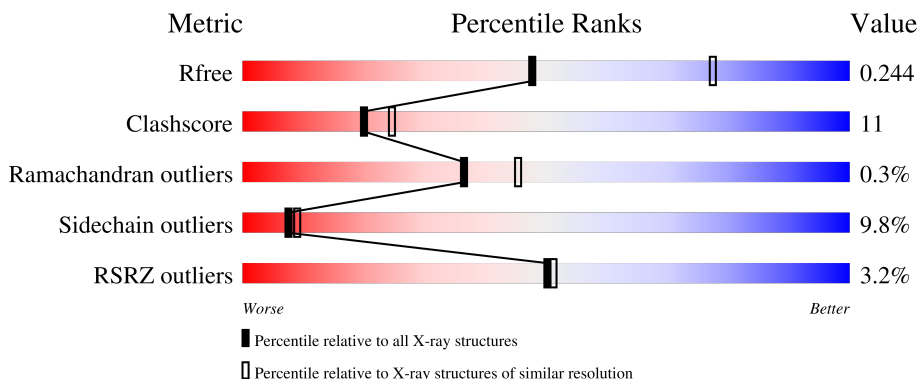
# 1 Overall quality at a glance

The following experimental techniques were used to determine the structure:

*X-RAY DIFFRACTION*

The reported resolution of this entry is 2.55 Å.

Percentile scores (ranging between 0-100) for global validation metrics of the entry are shown in the following graphic. The table shows the number of entries on which the scores are based.



Metric	Whole archive (#Entries)	Similar resolution (#Entries, resolution range(Å))
$R_{free}$	180053	1091 (2.54-2.54)
Clashscore	190562	1120 (2.54-2.54)
Ramachandran outliers	187476	1106 (2.54-2.54)
Sidechain outliers	187428	1106 (2.54-2.54)
RSRZ outliers	180081	1091 (2.54-2.54)

The table below summarises the geometric issues observed across the polymeric chains and their fit to the electron density. The red, orange, yellow and green segments of the lower bar indicate the fraction of residues that contain outliers for  $\geq 3$ , 2, 1 and 0 types of geometric quality criteria respectively. A grey segment represents the fraction of residues that are not modelled. The numeric value for each fraction is indicated below the corresponding segment, with a dot representing fractions  $\leq 5\%$ . The upper red bar (where present) indicates the fraction of residues that have poor fit to the electron density. The numeric value is given above the bar.

Mol	Chain	Length	Quality of chain
1	A	485	 4% 66% 25% 5% . .
1	B	485	 2% 66% 24% 5% 5%
1	C	485	 3% 71% 23% 5% .
1	D	485	 4% 69% 24% . .

The following table lists non-polymeric compounds, carbohydrate monomers and non-standard residues in protein, DNA, RNA chains that are outliers for geometric or electron-density-fit criteria:

<b>Mol</b>	<b>Type</b>	<b>Chain</b>	<b>Res</b>	<b>Chirality</b>	<b>Geometry</b>	<b>Clashes</b>	<b>Electron density</b>
4	ACT	B	503	-	-	X	-

## 2 Entry composition i

There are 5 unique types of molecules in this entry. The entry contains 15770 atoms, of which 0 are hydrogens and 0 are deuteriums.

In the tables below, the ZeroOcc column contains the number of atoms modelled with zero occupancy, the AltConf column contains the number of residues with at least one atom in alternate conformation and the Trace column contains the number of residues modelled with at most 2 atoms.

- Molecule 1 is a protein called HTH-type transcriptional regulatory protein GabR.

Mol	Chain	Residues	Atoms					ZeroOcc	AltConf	Trace
			Total	C	N	O	S			
1	A	468	3800	2413	656	714	17	0	0	0
1	B	463	3757	2383	652	705	17	0	0	0
1	C	475	3855	2449	667	721	18	0	0	0
1	D	472	3831	2432	663	718	18	0	0	0

There are 24 discrepancies between the modelled and reference sequences:

Chain	Residue	Modelled	Actual	Comment	Reference
A	480	HIS	-	expression tag	UNP P94426
A	481	HIS	-	expression tag	UNP P94426
A	482	HIS	-	expression tag	UNP P94426
A	483	HIS	-	expression tag	UNP P94426
A	484	HIS	-	expression tag	UNP P94426
A	485	HIS	-	expression tag	UNP P94426
B	480	HIS	-	expression tag	UNP P94426
B	481	HIS	-	expression tag	UNP P94426
B	482	HIS	-	expression tag	UNP P94426
B	483	HIS	-	expression tag	UNP P94426
B	484	HIS	-	expression tag	UNP P94426
B	485	HIS	-	expression tag	UNP P94426
C	480	HIS	-	expression tag	UNP P94426
C	481	HIS	-	expression tag	UNP P94426
C	482	HIS	-	expression tag	UNP P94426
C	483	HIS	-	expression tag	UNP P94426
C	484	HIS	-	expression tag	UNP P94426
C	485	HIS	-	expression tag	UNP P94426
D	480	HIS	-	expression tag	UNP P94426
D	481	HIS	-	expression tag	UNP P94426
D	482	HIS	-	expression tag	UNP P94426

*Continued on next page...*

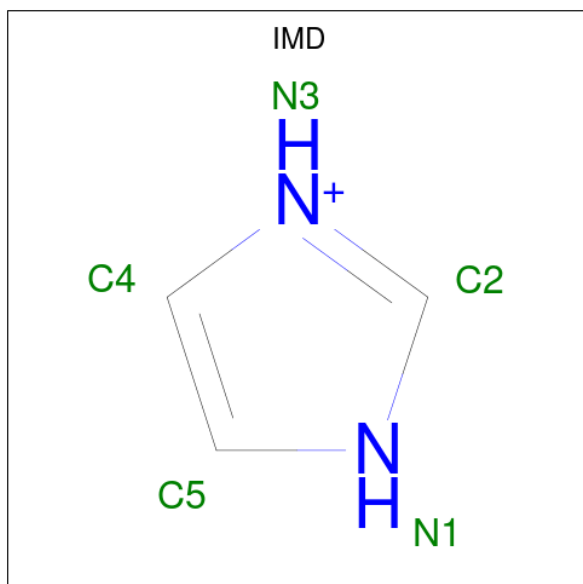
Continued from previous page...

Chain	Residue	Modelled	Actual	Comment	Reference
D	483	HIS	-	expression tag	UNP P94426
D	484	HIS	-	expression tag	UNP P94426
D	485	HIS	-	expression tag	UNP P94426

- Molecule 2 is ZINC ION (CCD ID: ZN) (formula: Zn).

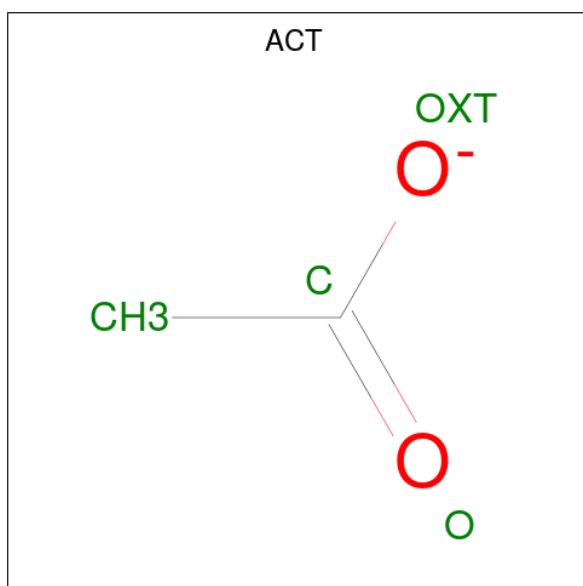
Mol	Chain	Residues	Atoms	ZeroOcc	AltConf
2	A	1	Total Zn 1 1	0	0
2	B	1	Total Zn 1 1	0	0
2	C	1	Total Zn 1 1	0	0
2	D	1	Total Zn 1 1	0	0

- Molecule 3 is IMIDAZOLE (CCD ID: IMD) (formula: C<sub>3</sub>H<sub>5</sub>N<sub>2</sub>).



Mol	Chain	Residues	Atoms	ZeroOcc	AltConf
3	A	1	Total C N 5 3 2	0	0
3	B	1	Total C N 5 3 2	0	0
3	C	1	Total C N 5 3 2	0	0
3	D	1	Total C N 5 3 2	0	0

- Molecule 4 is ACETATE ION (CCD ID: ACT) (formula:  $C_2H_3O_2$ ).



Mol	Chain	Residues	Atoms	ZeroOcc	AltConf
4	A	1	Total C O 4 2 2	0	0
4	B	1	Total C O 4 2 2	0	0
4	B	1	Total C O 4 2 2	0	0
4	B	1	Total C O 4 2 2	0	0
4	B	1	Total C O 4 2 2	0	0
4	C	1	Total C O 4 2 2	0	0
4	C	1	Total C O 4 2 2	0	0
4	D	1	Total C O 4 2 2	0	0
4	D	1	Total C O 4 2 2	0	0

- Molecule 5 is water.

Mol	Chain	Residues	Atoms	ZeroOcc	AltConf
5	A	101	Total O 101 101	0	0
5	B	102	Total O 102 102	0	0

*Continued on next page...*

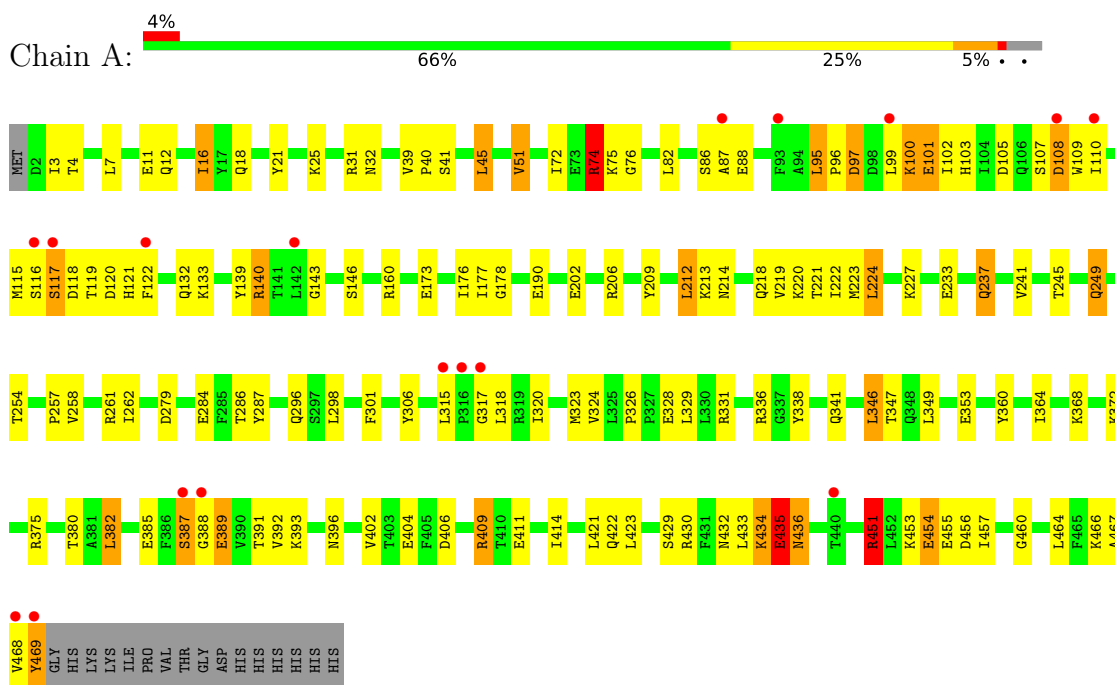
*Continued from previous page...*

<b>Mol</b>	<b>Chain</b>	<b>Residues</b>	<b>Atoms</b>		<b>ZeroOcc</b>	<b>AltConf</b>
5	C	134	Total 134	O 134	0	0
5	D	130	Total 130	O 130	0	0

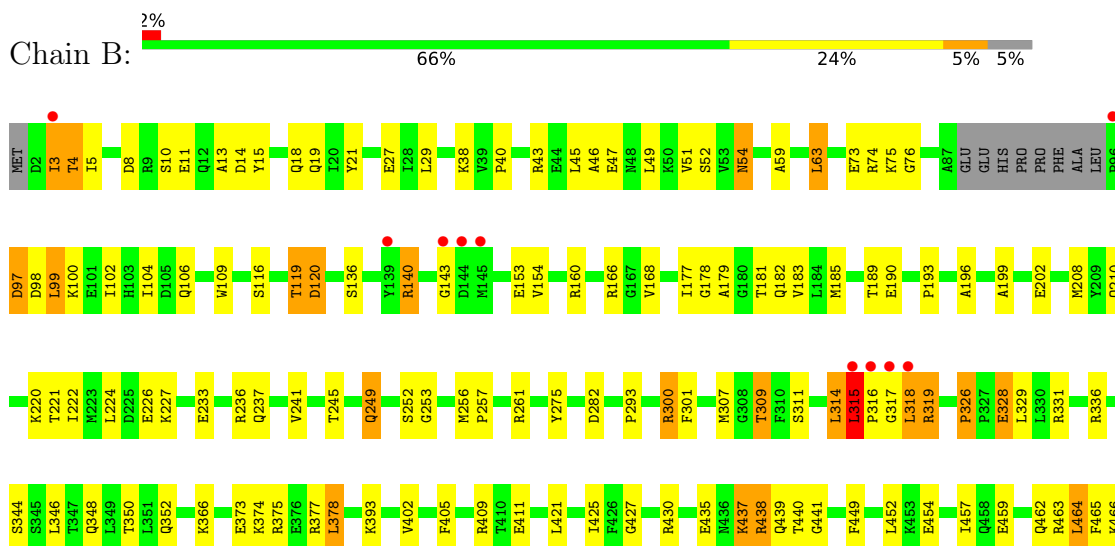
### 3 Residue-property plots [i](#)

These plots are drawn for all protein, RNA, DNA and oligosaccharide chains in the entry. The first graphic for a chain summarises the proportions of the various outlier classes displayed in the second graphic. The second graphic shows the sequence view annotated by issues in geometry and electron density. Residues are color-coded according to the number of geometric quality criteria for which they contain at least one outlier: green = 0, yellow = 1, orange = 2 and red = 3 or more. A red dot above a residue indicates a poor fit to the electron density ( $RSRZ > 2$ ). Stretches of 2 or more consecutive residues without any outlier are shown as a green connector. Residues present in the sample, but not in the model, are shown in grey.

- Molecule 1: HTH-type transcriptional regulatory protein GabR

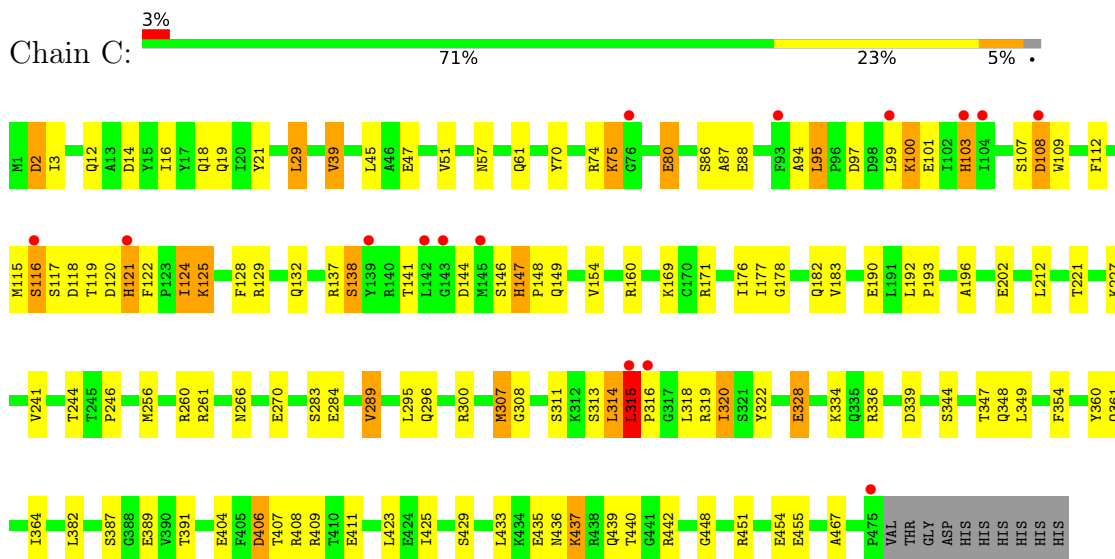


- Molecule 1: HTH-type transcriptional regulatory protein GabR

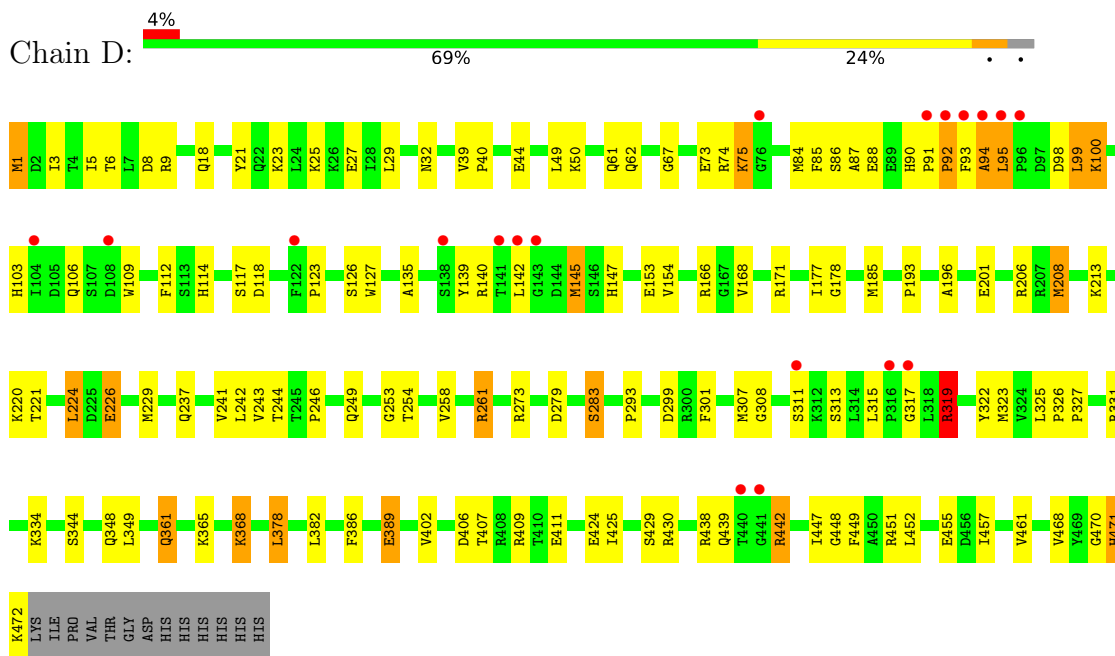


A467
V468
Y469
G470
H471
K472
LYS
ILE
PRO
THR
VAL
THR
GLY
ASP
HIS
HIS
HIS
HIS
HIS
HIS
HIS

• Molecule 1: HTH-type transcriptional regulatory protein GabR



• Molecule 1: HTH-type transcriptional regulatory protein GabR



## 4 Data and refinement statistics

Property	Value	Source
Space group	P 21 21 21	Depositor
Cell constants a, b, c, $\alpha$ , $\beta$ , $\gamma$	99.93Å 101.36Å 213.20Å 90.00° 90.00° 90.00°	Depositor
Resolution (Å)	49.30 – 2.55 49.30 – 2.55	Depositor EDS
% Data completeness (in resolution range)	95.6 (49.30-2.55) 92.0 (49.30-2.55)	Depositor EDS
$R_{merge}$	0.12	Depositor
$R_{sym}$	(Not available)	Depositor
$\langle I/\sigma(I) \rangle$ <sup>1</sup>	1.15 (at 2.34Å)	Xtrriage
Refinement program	PHENIX (phenix.refine: 1.8.2_1309)	Depositor
R, $R_{free}$	0.194 , 0.244 0.196 , 0.244	Depositor DCC
$R_{free}$ test set	4245 reflections (4.69%)	wwPDB-VP
Wilson B-factor (Å <sup>2</sup> )	39.3	Xtrriage
Anisotropy	0.470	Xtrriage
Bulk solvent $k_{sol}$ (e/Å <sup>3</sup> ), $B_{sol}$ (Å <sup>2</sup> )	0.34 , 52.6	EDS
L-test for twinning <sup>2</sup>	$\langle  L  \rangle = 0.47$ , $\langle L^2 \rangle = 0.30$	Xtrriage
Estimated twinning fraction	0.025 for k,h,-l	Xtrriage
$F_o, F_c$ correlation	0.94	EDS
Total number of atoms	15770	wwPDB-VP
Average B, all atoms (Å <sup>2</sup> )	46.0	wwPDB-VP

Xtrriage's analysis on translational NCS is as follows: *The largest off-origin peak in the Patterson function is 2.76% of the height of the origin peak. No significant pseudotranslation is detected.*

<sup>1</sup>Intensities estimated from amplitudes.

<sup>2</sup>Theoretical values of  $\langle |L| \rangle$ ,  $\langle L^2 \rangle$  for acentric reflections are 0.5, 0.333 respectively for untwinned datasets, and 0.375, 0.2 for perfectly twinned datasets.

## 5 Model quality [i](#)

### 5.1 Standard geometry [i](#)

Bond lengths and bond angles in the following residue types are not validated in this section: ZN, IMD, ACT

The Z score for a bond length (or angle) is the number of standard deviations the observed value is removed from the expected value. A bond length (or angle) with  $|Z| > 5$  is considered an outlier worth inspection. RMSZ is the root-mean-square of all Z scores of the bond lengths (or angles).

Mol	Chain	Bond lengths		Bond angles	
		RMSZ	# Z  >5	RMSZ	# Z  >5
1	A	0.35	0/3876	0.89	13/5227 (0.2%)
1	B	0.33	0/3829	0.84	7/5157 (0.1%)
1	C	0.35	0/3933	0.89	10/5302 (0.2%)
1	D	0.34	0/3908	0.85	13/5268 (0.2%)
All	All	0.34	0/15546	0.87	43/20954 (0.2%)

Chiral center outliers are detected by calculating the chiral volume of a chiral center and verifying if the center is modelled as a planar moiety or with the opposite hand. A planarity outlier is detected by checking planarity of atoms in a peptide group, atoms in a mainchain group or atoms of a sidechain that are expected to be planar.

Mol	Chain	#Chirality outliers	#Planarity outliers
1	A	0	2
1	B	0	3
1	C	0	6
All	All	0	11

There are no bond length outliers.

The worst 5 of 43 bond angle outliers are listed below:

Mol	Chain	Res	Type	Atoms	Z	Observed(°)	Ideal(°)
1	C	315	LEU	CA-C-N	-16.13	101.27	118.85
1	C	315	LEU	C-N-CA	-16.13	101.27	118.85
1	A	95	LEU	CA-C-N	10.83	132.03	119.47
1	A	95	LEU	C-N-CA	10.83	132.03	119.47
1	C	109	TRP	N-CA-C	-7.51	100.61	110.53

There are no chirality outliers.

5 of 11 planarity outliers are listed below:

Mol	Chain	Res	Type	Group
1	A	435	GLU	Peptide
1	A	436	ASN	Peptide
1	B	314	LEU	Peptide
1	B	97	ASP	Peptide
1	B	99	LEU	Peptide

## 5.2 Too-close contacts

In the following table, the Non-H and H(model) columns list the number of non-hydrogen atoms and hydrogen atoms in the chain respectively. The H(added) column lists the number of hydrogen atoms added and optimized by MolProbity. The Clashes column lists the number of clashes within the asymmetric unit, whereas Symm-Clashes lists symmetry-related clashes.

Mol	Chain	Non-H	H(model)	H(added)	Clashes	Symm-Clashes
1	A	3800	0	3810	103	0
1	B	3757	0	3774	91	0
1	C	3855	0	3876	94	0
1	D	3831	0	3845	83	0
2	A	1	0	0	0	0
2	B	1	0	0	0	0
2	C	1	0	0	0	0
2	D	1	0	0	0	0
3	A	5	0	5	0	0
3	B	5	0	5	0	0
3	C	5	0	5	1	0
3	D	5	0	5	0	0
4	A	4	0	3	0	0
4	B	16	0	12	3	0
4	C	8	0	6	1	0
4	D	8	0	6	0	0
5	A	101	0	0	14	0
5	B	102	0	0	11	0
5	C	134	0	0	18	0
5	D	130	0	0	18	0
All	All	15770	0	15352	350	0

The all-atom clashscore is defined as the number of clashes found per 1000 atoms (including hydrogen atoms). The all-atom clashscore for this structure is 11.

The worst 5 of 350 close contacts within the same asymmetric unit are listed below, sorted by their clash magnitude.

Atom-1	Atom-2	Interatomic distance (Å)	Clash overlap (Å)
1:A:86:SER:O	5:A:664:HOH:O	1.90	0.91
1:C:171:ARG:NH1	5:C:730:HOH:O	2.03	0.90
4:B:503:ACT:O	5:B:663:HOH:O	1.91	0.88
1:B:75:LYS:HB3	1:B:76:GLY:HA2	1.54	0.88
1:C:284:GLU:O	5:C:606:HOH:O	1.91	0.88

There are no symmetry-related clashes.

## 5.3 Torsion angles [i](#)

### 5.3.1 Protein backbone [i](#)

In the following table, the Percentiles column shows the percent Ramachandran outliers of the chain as a percentile score with respect to all X-ray entries followed by that with respect to entries of similar resolution.

The Analysed column shows the number of residues for which the backbone conformation was analysed, and the total number of residues.

Mol	Chain	Analysed	Favoured	Allowed	Outliers	Percentiles	
1	A	466/485 (96%)	434 (93%)	30 (6%)	2 (0%)	30	39
1	B	459/485 (95%)	425 (93%)	33 (7%)	1 (0%)	43	56
1	C	473/485 (98%)	443 (94%)	29 (6%)	1 (0%)	43	56
1	D	470/485 (97%)	435 (93%)	34 (7%)	1 (0%)	43	56
All	All	1868/1940 (96%)	1737 (93%)	126 (7%)	5 (0%)	36	45

All (5) Ramachandran outliers are listed below:

Mol	Chain	Res	Type
1	B	98	ASP
1	A	435	GLU
1	A	74	ARG
1	C	88	GLU
1	D	95	LEU

### 5.3.2 Protein sidechains [i](#)

In the following table, the Percentiles column shows the percent sidechain outliers of the chain as a percentile score with respect to all X-ray entries followed by that with respect to entries of similar resolution.

The Analysed column shows the number of residues for which the sidechain conformation was analysed, and the total number of residues.

Mol	Chain	Analysed	Rotameric	Outliers	Percentiles	
1	A	416/431 (96%)	372 (89%)	44 (11%)	6	7
1	B	411/431 (95%)	372 (90%)	39 (10%)	8	9
1	C	422/431 (98%)	381 (90%)	41 (10%)	8	9
1	D	419/431 (97%)	380 (91%)	39 (9%)	8	10
All	All	1668/1724 (97%)	1505 (90%)	163 (10%)	7	9

5 of 163 residues with a non-rotameric sidechain are listed below:

Mol	Chain	Res	Type
1	C	382	LEU
1	D	241	VAL
1	C	433	LEU
1	D	84	MET
1	D	325	LEU

Sometimes sidechains can be flipped to improve hydrogen bonding and reduce clashes. 5 of 12 such sidechains are listed below:

Mol	Chain	Res	Type
1	C	132	GLN
1	C	302	GLN
1	D	106	GLN
1	C	422	GLN
1	B	12	GLN

### 5.3.3 RNA [i](#)

There are no RNA molecules in this entry.

## 5.4 Non-standard residues in protein, DNA, RNA chains [i](#)

There are no non-standard protein/DNA/RNA residues in this entry.

## 5.5 Carbohydrates [i](#)

There are no oligosaccharides in this entry.

## 5.6 Ligand geometry

Of 17 ligands modelled in this entry, 4 are monoatomic - leaving 13 for Mogul analysis.

In the following table, the Counts columns list the number of bonds (or angles) for which Mogul statistics could be retrieved, the number of bonds (or angles) that are observed in the model and the number of bonds (or angles) that are defined in the Chemical Component Dictionary. The Link column lists molecule types, if any, to which the group is linked. The Z score for a bond length (or angle) is the number of standard deviations the observed value is removed from the expected value. A bond length (or angle) with  $|Z| > 2$  is considered an outlier worth inspection. RMSZ is the root-mean-square of all Z scores of the bond lengths (or angles).

Mol	Type	Chain	Res	Link	Bond lengths			Bond angles		
					Counts	RMSZ	$\# Z  > 2$	Counts	RMSZ	$\# Z  > 2$
4	ACT	B	506	-	3,3,3	0.80	0	3,3,3	1.35	0
4	ACT	D	504	-	3,3,3	0.80	0	3,3,3	1.37	0
4	ACT	C	504	-	3,3,3	0.81	0	3,3,3	1.36	0
3	IMD	B	502	-	5,5,5	0.68	0	5,5,5	0.45	0
3	IMD	D	502	-	5,5,5	0.68	0	5,5,5	0.45	0
4	ACT	B	503	-	3,3,3	0.82	0	3,3,3	1.39	0
4	ACT	B	504	-	3,3,3	0.83	0	3,3,3	1.31	0
3	IMD	C	502	-	5,5,5	0.68	0	5,5,5	0.45	0
4	ACT	A	503	-	3,3,3	0.83	0	3,3,3	1.36	0
4	ACT	C	503	-	3,3,3	0.80	0	3,3,3	1.34	0
4	ACT	D	503	-	3,3,3	0.82	0	3,3,3	1.34	0
3	IMD	A	502	-	5,5,5	0.67	0	5,5,5	0.44	0
4	ACT	B	505	-	3,3,3	0.80	0	3,3,3	1.35	0

In the following table, the Chirals column lists the number of chiral outliers, the number of chiral centers analysed, the number of these observed in the model and the number defined in the Chemical Component Dictionary. Similar counts are reported in the Torsion and Rings columns. '-' means no outliers of that kind were identified.

Mol	Type	Chain	Res	Link	Chirals	Torsions	Rings
3	IMD	B	502	-	-	-	0/1/1/1
3	IMD	C	502	-	-	-	0/1/1/1
3	IMD	A	502	-	-	-	0/1/1/1
3	IMD	D	502	-	-	-	0/1/1/1

There are no bond length outliers.

There are no bond angle outliers.

There are no chirality outliers.

There are no torsion outliers.

There are no ring outliers.

4 monomers are involved in 5 short contacts:

Mol	Chain	Res	Type	Clashes	Symm-Clashes
4	B	503	ACT	2	0
3	C	502	IMD	1	0
4	C	503	ACT	1	0
4	B	505	ACT	1	0

## 5.7 Other polymers [i](#)

There are no such residues in this entry.

## 5.8 Polymer linkage issues [i](#)

There are no chain breaks in this entry.

## 6 Fit of model and data [i](#)

### 6.1 Protein, DNA and RNA chains [i](#)

In the following table, the column labelled ‘#RSRZ > 2’ contains the number (and percentage) of RSRZ outliers, followed by percent RSRZ outliers for the chain as percentile scores relative to all X-ray entries and entries of similar resolution. The OWAB column contains the minimum, median, 95<sup>th</sup> percentile and maximum values of the occupancy-weighted average B-factor per residue. The column labelled ‘Q < 0.9’ lists the number of (and percentage) of residues with an average occupancy less than 0.9.

Mol	Chain	Analysed	<RSRZ>	#RSRZ>2	OWAB(Å <sup>2</sup> )	Q<0.9
1	A	468/485 (96%)	0.06	17 (3%) 46 47	20, 49, 102, 126	0
1	B	463/485 (95%)	-0.06	10 (2%) 62 63	15, 42, 98, 143	0
1	C	475/485 (97%)	-0.14	15 (3%) 50 51	16, 36, 93, 137	0
1	D	472/485 (97%)	-0.15	19 (4%) 42 43	13, 36, 91, 123	0
All	All	1878/1940 (96%)	-0.07	61 (3%) 50 51	13, 40, 97, 143	0

The worst 5 of 61 RSRZ outliers are listed below:

Mol	Chain	Res	Type	RSRZ
1	A	99	LEU	4.4
1	C	121	HIS	4.3
1	D	95	LEU	4.2
1	C	99	LEU	4.1
1	D	92	PRO	3.6

### 6.2 Non-standard residues in protein, DNA, RNA chains [i](#)

There are no non-standard protein/DNA/RNA residues in this entry.

### 6.3 Carbohydrates [i](#)

There are no oligosaccharides in this entry.

### 6.4 Ligands [i](#)

In the following table, the Atoms column lists the number of modelled atoms in the group and the number defined in the chemical component dictionary. The B-factors column lists the minimum, median, 95<sup>th</sup> percentile and maximum values of B factors of atoms in the group. The column labelled ‘Q < 0.9’ lists the number of atoms with occupancy less than 0.9.

Mol	Type	Chain	Res	Atoms	RSCC	RSR	B-factors( $\text{\AA}^2$ )	Q<0.9
4	ACT	D	504	4/4	0.17	0.20	55,62,62,65	0
4	ACT	C	504	4/4	0.56	0.21	51,58,58,61	0
4	ACT	B	504	4/4	0.73	0.13	24,42,43,50	0
4	ACT	B	505	4/4	0.76	0.12	45,57,58,63	0
4	ACT	B	506	4/4	0.76	0.17	60,61,62,64	0
4	ACT	A	503	4/4	0.81	0.13	28,29,33,44	0
4	ACT	B	503	4/4	0.87	0.26	27,29,37,49	0
4	ACT	C	503	4/4	0.87	0.11	26,38,42,44	0
3	IMD	A	502	5/5	0.88	0.12	41,41,43,43	0
3	IMD	C	502	5/5	0.91	0.10	27,31,37,40	0
4	ACT	D	503	4/4	0.92	0.08	38,42,43,44	0
3	IMD	B	502	5/5	0.93	0.09	17,20,22,26	0
2	ZN	C	501	1/1	0.93	0.07	78,78,78,78	0
3	IMD	D	502	5/5	0.93	0.10	28,29,37,38	0
2	ZN	B	501	1/1	0.95	0.10	88,88,88,88	0
2	ZN	D	501	1/1	0.97	0.04	81,81,81,81	0
2	ZN	A	501	1/1	0.98	0.03	63,63,63,63	0

## 6.5 Other polymers [i](#)

There are no such residues in this entry.