



## wwPDB EM Validation Summary Report ⓘ

Mar 9, 2026 – 04:56 AM UTC

PDB ID : 7MIR / pdb\_00007mir  
EMDB ID : EMD-23862  
Title : Cryo-EM structure of SidJ-SdeA-CaM reaction intermediate complex  
Authors : Osinski, A.; Black, M.H.; Pawlowski, K.; Chen, Z.; Li, Y.; Tagliabracci, V.S.  
Deposited on : 2021-04-17  
Resolution : 2.50 Å (reported)

This is a wwPDB EM Validation Summary Report for a publicly released PDB entry.

We welcome your comments at [validation@mail.wwpdb.org](mailto:validation@mail.wwpdb.org)

A user guide is available at

<https://www.wwpdb.org/validation/2017/EMValidationReportHelp>

with specific help available everywhere you see the ⓘ symbol.

The types of validation reports are described at

<http://www.wwpdb.org/validation/2017/FAQs#types>.

---

The following versions of software and data (see [references ⓘ](#)) were used in the production of this report:

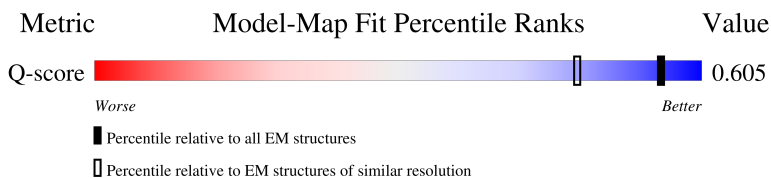
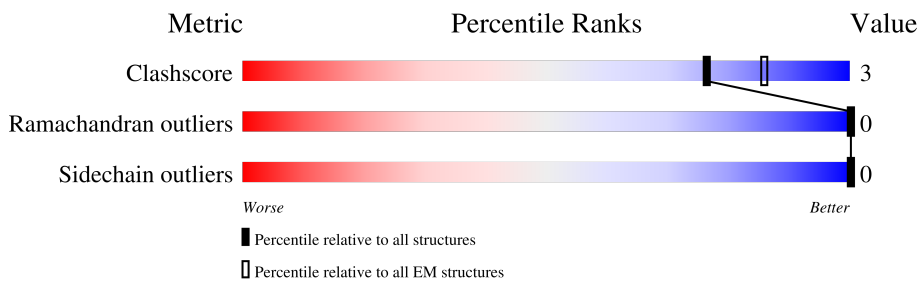
EMDB validation analysis : 0.0.1.dev132  
Mogul : 2022.3.0, CSD as543be (2022)  
MolProbity : 4-5-2 with Phenix2.0  
Buster-report : wwPDB partial adaption of 1.1.7 (2018)  
Percentile statistics : 20250101.v01 (using entries in the PDB archive January 1st 2025)  
EM percentile statistics : 202505.v01 (Using data in the EMDB archive up until May 2025)  
MapQ : 1.9.13  
Ideal geometry (proteins) : Engh & Huber (2001)  
Ideal geometry (DNA, RNA) : Parkinson et al. (1996)  
Validation Pipeline (wwPDB-VP) : 2.49

# 1 Overall quality at a glance

The following experimental techniques were used to determine the structure:  
*ELECTRON MICROSCOPY*

The reported resolution of this entry is 2.50 Å.

Percentile scores (ranging between 0-100) for global validation metrics of the entry are shown in the following graphic. The table shows the number of entries on which the scores are based.



Metric	Whole archive (#Entries)	EM structures (#Entries)	Similar EM resolution (#Entries, resolution range(Å))
Clashscore	229148	23984	-
Ramachandran outliers	224038	23583	-
Sidechain outliers	223484	23102	-
Q-score	-	25397	7115 ( 2.00 - 3.00 )

The table below summarises the geometric issues observed across the polymeric chains and their fit to the map. The red, orange, yellow and green segments of the bar indicate the fraction of residues that contain outliers for  $\geq 3$ , 2, 1 and 0 types of geometric quality criteria respectively. A grey segment represents the fraction of residues that are not modelled. The numeric value for each fraction is indicated below the corresponding segment, with a dot representing fractions  $\leq 5\%$ . The upper red bar (where present) indicates the fraction of residues that have poor fit to the EM map (all-atom inclusion  $< 40\%$ ). The numeric value is given above the bar.

Mol	Chain	Length	Quality of chain
1	A	756	<p>27% (red), 94% (green), 5% (yellow), 5% (grey)</p>
2	B	150	<p>27% (red), 79% (green), 7% (yellow), 14% (grey)</p>
3	C	965	<p>8% (red), 67% (green), 8% (yellow), 25% (grey)</p>

## 2 Entry composition [i](#)

There are 7 unique types of molecules in this entry. The entry contains 25768 atoms, of which 12771 are hydrogens and 0 are deuteriums.

In the tables below, the AltConf column contains the number of residues with at least one atom in alternate conformation and the Trace column contains the number of residues modelled with at most 2 atoms.

- Molecule 1 is a protein called Calmodulin-dependent glutamylase SidJ.

Mol	Chain	Residues	Atoms					AltConf	Trace	
			Total	C	H	N	O			S
1	A	750	12193	3912	6077	1035	1154	15	0	0

There is a discrepancy between the modelled and reference sequences:

Chain	Residue	Modelled	Actual	Comment	Reference
A	96	SER	-	expression tag	UNP Q5ZTK6

- Molecule 2 is a protein called Calmodulin-2.

Mol	Chain	Residues	Atoms					AltConf	Trace	
			Total	C	H	N	O			S
2	B	129	1995	634	970	166	216	9	0	0

There is a discrepancy between the modelled and reference sequences:

Chain	Residue	Modelled	Actual	Comment	Reference
B	0	SER	-	expression tag	UNP P0DP24

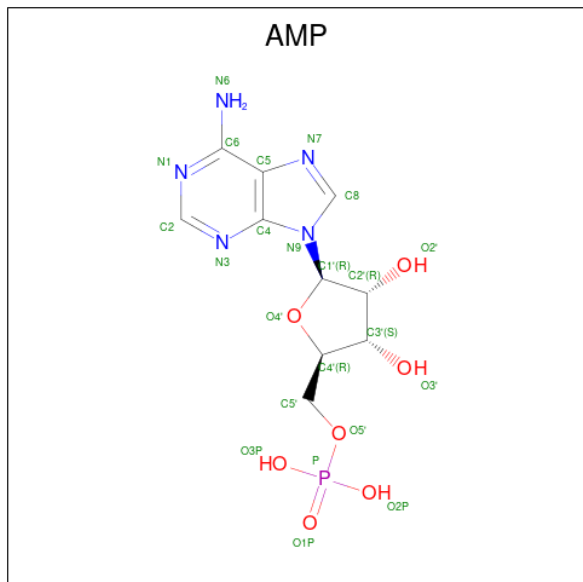
- Molecule 3 is a protein called Ubiquitinating/deubiquitinating enzyme SdeA.

Mol	Chain	Residues	Atoms					AltConf	Trace	
			Total	C	H	N	O			S
3	C	724	11500	3641	5701	1020	1117	21	0	0

There are 5 discrepancies between the modelled and reference sequences:

Chain	Residue	Modelled	Actual	Comment	Reference
C	226	GLY	-	expression tag	UNP Q5ZTK4
C	227	ALA	-	expression tag	UNP Q5ZTK4
C	228	MET	-	expression tag	UNP Q5ZTK4
C	229	GLY	-	expression tag	UNP Q5ZTK4
C	230	SER	-	expression tag	UNP Q5ZTK4

- Molecule 4 is ADENOSINE MONOPHOSPHATE (CCD ID: AMP) (formula:  $C_{10}H_{14}N_5O_7P$ ) (labeled as "Ligand of Interest" by depositor).



Mol	Chain	Residues	Atoms					AltConf	
			Total	C	H	N	O		P
4	A	1	34	10	11	5	7	1	0

- Molecule 5 is MAGNESIUM ION (CCD ID: MG) (formula: Mg) (labeled as "Ligand of Interest" by depositor).

Mol	Chain	Residues	Atoms		AltConf
			Total	Mg	
5	A	2	2	2	0

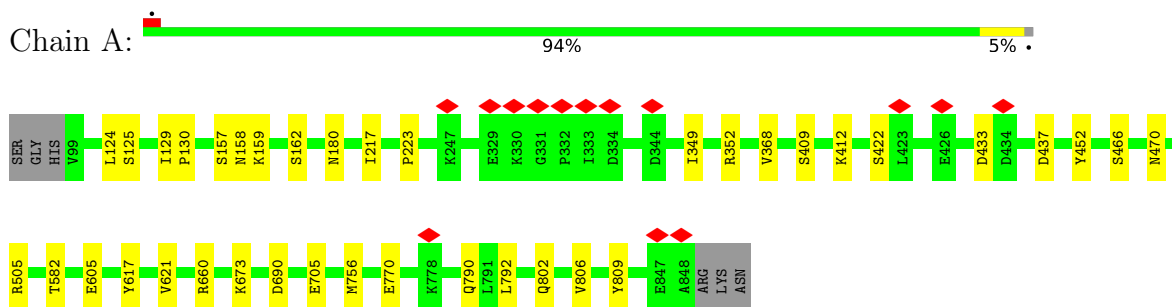
- Molecule 6 is ADENOSINE-5'-TRIPHOSPHATE (CCD ID: ATP) (formula:  $C_{10}H_{16}N_5O_{13}P_3$ ) (labeled as "Ligand of Interest" by depositor).



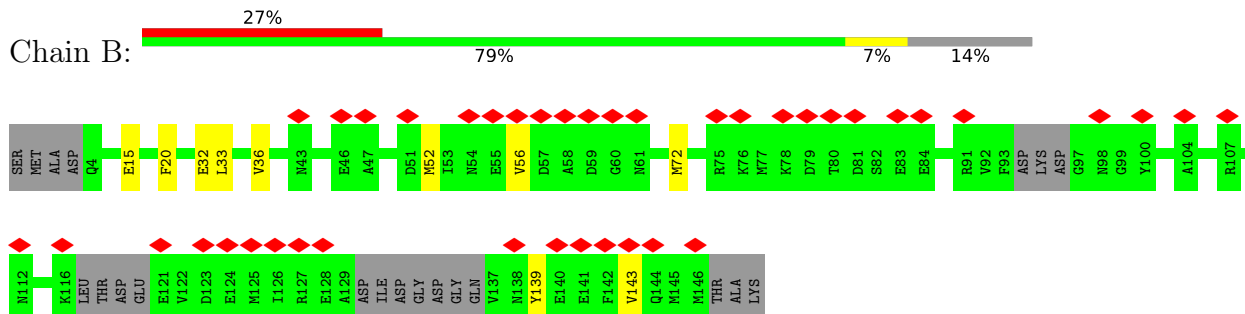
### 3 Residue-property plots

These plots are drawn for all protein, RNA, DNA and oligosaccharide chains in the entry. The first graphic for a chain summarises the proportions of the various outlier classes displayed in the second graphic. The second graphic shows the sequence view annotated by issues in geometry and atom inclusion in map density. Residues are color-coded according to the number of geometric quality criteria for which they contain at least one outlier: green = 0, yellow = 1, orange = 2 and red = 3 or more. A red diamond above a residue indicates a poor fit to the EM map for this residue (all-atom inclusion < 40%). Stretches of 2 or more consecutive residues without any outlier are shown as a green connector. Residues present in the sample, but not in the model, are shown in grey.

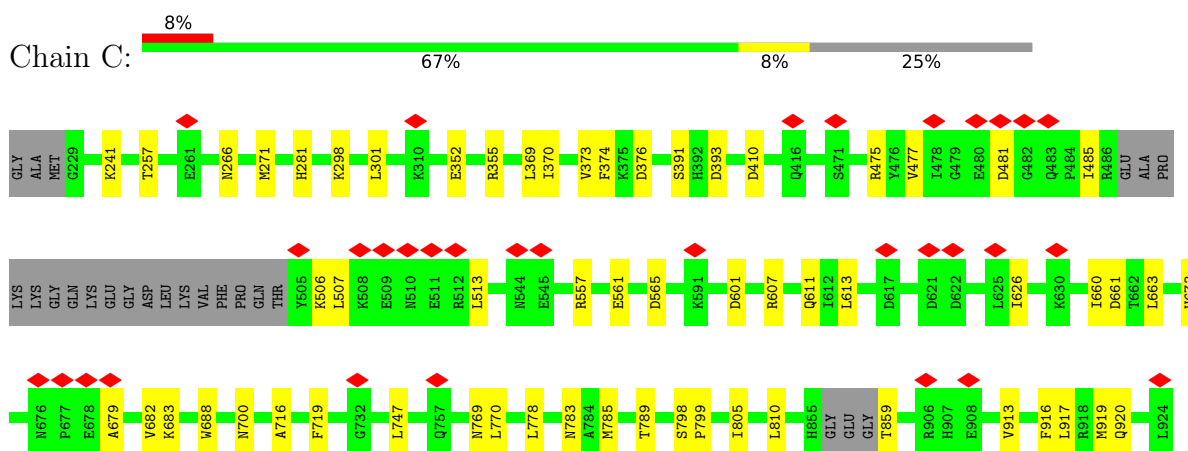
- Molecule 1: Calmodulin-dependent glutamylase SidJ



- Molecule 2: Calmodulin-2



- Molecule 3: Ubiquitinating/deubiquitinating enzyme SdeA



A925	E926	V927	K928	S929	S930	I931	E932	LYS	ALA	GLN	ARG	ALA	PRO	GLN	ASP	LEU	THR	THR	ILE	PHE	ASN	LEU	GLN	ASN	VAL	VAL	ALA	ALA	VAL	GLN	TYR	SER	HIS	LEU	SER	THR	LYS	TYR	GLY	ASN	PHE	LEU	LYS	THR	VAL	ASP	THR	VAL	VAL	GLY	PRO	PRO	VAL	LEU	GLU	GLU	ASN	SER	LEU	SER	GLY	LEU	MET	GLU	SER
ASP	THR	ASP	THR	LEU	LEU	LYS	ALA	LEU	ALA	ALA	PHE	PRO	SER	ASP	THR	GLN	TRP	GLY	THR	SER	ILE	PHE	ASN	PHE	GLU	GLU	ALA	ALA	ARG	GLN	ALA	LYS	ARG	GLN	MET	ASP	ALA	ILE	LYS	GLN	MET	VAL	GLY	ASN	VAL	VAL	VAL	LEU	ASP	ASP	ALA	LEU	GLU	LYS	VAL	VAL	ARG	E1099	R1100	Y1101	D1102	A1103	L1104		
ILE	ALA	GLY	ALA	LEU	ASP	ALA	LEU	LYS	LYS	ILE	PRO	SER	GLU	LYS	GLU	MET	GLY	THR	ILE	ARG	R1066	E1067	L1068	R1069	E1070	Q1071	I1072	Q1073	S1074	A1075	R1076	Q1077	E1078	L1079	E1080	S1081	L1082	Q1083	R1084	A1085	V1086	VAL	THR	PRO	VAL	VAL	THR	THR	ASP	VAL	GLU	LYS	VAL	VAL	ARG	E1099	R1100	Y1101	D1102	A1103	L1104				
GLU	GLN	ILE	GLN	VAL	ILE	ASP	THR	LYS	LEU	ALA	TYR	LEU	LEU	GLU	VAL	THR	THR	LYS	GLN	ILE	ALA	VAL	LYS	GLY	ILE	SER	ASN	LEU	SER	ASN	LEU	LEU	GLN	GLU	VAL	THR	VAL	LEU	ASN	GLU	LYS	ILE	ARG	MET	HIS	VAL	GLY	THR	ASP	LYS	VAL	ASP	PHE	SER	ASP	VAL	GLU	LYS	LEU						
GLU	GLN	ILE	GLN	VAL	ILE	ASP	THR	LYS	LEU	ALA	TYR	LEU	LEU	GLU	VAL	THR	THR	LYS	GLN	ILE	ALA	VAL	LYS	GLY	ILE	SER	ASN	LEU	SER	ASN	LEU	LEU	GLN	GLU	VAL	THR	VAL	LEU	ASN	GLU	LYS	ILE	ARG	MET	HIS	VAL	GLY	THR	ASP	LYS	VAL	ASP	PHE	SER	ASP	VAL	GLU	LYS	LEU						

## 4 Experimental information

Property	Value	Source
EM reconstruction method	SINGLE PARTICLE	Depositor
Imposed symmetry	POINT, Not provided	
Number of particles used	310154	Depositor
Resolution determination method	FSC 0.143 CUT-OFF	Depositor
CTF correction method	PHASE FLIPPING AND AMPLITUDE CORRECTION	Depositor
Microscope	FEI TITAN KRIOS	Depositor
Voltage (kV)	300	Depositor
Electron dose ( $e^-/\text{\AA}^2$ )	50	Depositor
Minimum defocus (nm)	Not provided	
Maximum defocus (nm)	Not provided	
Magnification	Not provided	
Image detector	GATAN K3 BIOQUANTUM (6k x 4k)	Depositor
Maximum map value	0.191	Depositor
Minimum map value	-0.083	Depositor
Average map value	0.000	Depositor
Map value standard deviation	0.004	Depositor
Recommended contour level	0.03	Depositor
Map size (Å)	432.00003, 432.00003, 432.00003	wwPDB
Map dimensions	400, 400, 400	wwPDB
Map angles (°)	90.0, 90.0, 90.0	wwPDB
Pixel spacing (Å)	1.08, 1.08, 1.08	Depositor

## 5 Model quality i

### 5.1 Standard geometry i

Bond lengths and bond angles in the following residue types are not validated in this section: CA, MG, ATP, AMP

The Z score for a bond length (or angle) is the number of standard deviations the observed value is removed from the expected value. A bond length (or angle) with  $|Z| > 5$  is considered an outlier worth inspection. RMSZ is the root-mean-square of all Z scores of the bond lengths (or angles).

Mol	Chain	Bond lengths		Bond angles	
		RMSZ	# Z  >5	RMSZ	# Z  >5
1	A	0.13	0/6257	0.24	0/8460
2	B	0.10	0/1034	0.23	0/1382
3	C	0.12	0/5909	0.27	0/7971
All	All	0.12	0/13200	0.25	0/17813

There are no bond length outliers.

There are no bond angle outliers.

There are no chirality outliers.

There are no planarity outliers.

### 5.2 Too-close contacts i

In the following table, the Non-H and H(model) columns list the number of non-hydrogen atoms and hydrogen atoms in the chain respectively. The H(added) column lists the number of hydrogen atoms added and optimized by MolProbity. The Clashes column lists the number of clashes within the asymmetric unit, whereas Symm-Clashes lists symmetry-related clashes.

Mol	Chain	Non-H	H(model)	H(added)	Clashes	Symm-Clashes
1	A	6116	6077	6076	23	0
2	B	1025	970	970	9	0
3	C	5799	5701	5701	45	0
4	A	23	11	12	0	0
5	A	2	0	0	0	0
6	A	31	12	12	1	0
7	B	1	0	0	0	0
All	All	12997	12771	12771	76	0

The all-atom clashscore is defined as the number of clashes found per 1000 atoms (including hydrogen atoms). The all-atom clashscore for this structure is 3.

The worst 5 of 76 close contacts within the same asymmetric unit are listed below, sorted by their clash magnitude.

Atom-1	Atom-2	Interatomic distance (Å)	Clash overlap (Å)
3:C:352:GLU:OE2	3:C:355:ARG:NH2	2.08	0.87
3:C:607:ARG:O	3:C:611:GLN:NE2	2.11	0.83
1:A:452:TYR:OH	6:A:904:ATP:N6	2.13	0.82
1:A:130:PRO:HG2	1:A:582:THR:HG22	1.72	0.71
3:C:298:LYS:NZ	3:C:789:THR:O	2.25	0.70

There are no symmetry-related clashes.

### 5.3 Torsion angles [i](#)

#### 5.3.1 Protein backbone [i](#)

In the following table, the Percentiles column shows the percent Ramachandran outliers of the chain as a percentile score with respect to all PDB entries followed by that with respect to all EM entries.

The Analysed column shows the number of residues for which the backbone conformation was analysed, and the total number of residues.

Mol	Chain	Analysed	Favoured	Allowed	Outliers	Percentiles	
1	A	748/756 (99%)	730 (98%)	18 (2%)	0	100	100
2	B	121/150 (81%)	121 (100%)	0	0	100	100
3	C	714/965 (74%)	681 (95%)	33 (5%)	0	100	100
All	All	1583/1871 (85%)	1532 (97%)	51 (3%)	0	100	100

There are no Ramachandran outliers to report.

#### 5.3.2 Protein sidechains [i](#)

In the following table, the Percentiles column shows the percent sidechain outliers of the chain as a percentile score with respect to all PDB entries followed by that with respect to all EM entries.

The Analysed column shows the number of residues for which the sidechain conformation was analysed, and the total number of residues.

Mol	Chain	Analysed	Rotameric	Outliers	Percentiles	
1	A	679/684 (99%)	679 (100%)	0	100	100

*Continued on next page...*

*Continued from previous page...*

Mol	Chain	Analysed	Rotameric	Outliers	Percentiles	
2	B	111/128 (87%)	111 (100%)	0	100	100
3	C	631/838 (75%)	631 (100%)	0	100	100
All	All	1421/1650 (86%)	1421 (100%)	0	100	100

There are no protein residues with a non-rotameric sidechain to report.

Sometimes sidechains can be flipped to improve hydrogen bonding and reduce clashes. 5 of 12 such sidechains are listed below:

Mol	Chain	Res	Type
2	B	4	GLN
3	C	537	GLN
3	C	781	GLN
3	C	696	ASN
1	A	514	ASN

### 5.3.3 RNA [i](#)

There are no RNA molecules in this entry.

## 5.4 Non-standard residues in protein, DNA, RNA chains [i](#)

There are no non-standard protein/DNA/RNA residues in this entry.

## 5.5 Carbohydrates [i](#)

There are no oligosaccharides in this entry.

## 5.6 Ligand geometry [i](#)

Of 5 ligands modelled in this entry, 3 are monoatomic - leaving 2 for Mogul analysis.

In the following table, the Counts columns list the number of bonds (or angles) for which Mogul statistics could be retrieved, the number of bonds (or angles) that are observed in the model and the number of bonds (or angles) that are defined in the Chemical Component Dictionary. The Link column lists molecule types, if any, to which the group is linked. The Z score for a bond length (or angle) is the number of standard deviations the observed value is removed from the expected value. A bond length (or angle) with  $|Z| > 2$  is considered an outlier worth inspection. RMSZ is the root-mean-square of all Z scores of the bond lengths (or angles).

Mol	Type	Chain	Res	Link	Bond lengths			Bond angles		
					Counts	RMSZ	# Z  > 2	Counts	RMSZ	# Z  > 2
4	AMP	A	901	-	25,25,25	0.28	0	37,38,38	0.45	0
6	ATP	A	904	5	32,33,33	0.31	0	48,52,52	0.30	0

In the following table, the Chirals column lists the number of chiral outliers, the number of chiral centers analysed, the number of these observed in the model and the number defined in the Chemical Component Dictionary. Similar counts are reported in the Torsion and Rings columns. '-' means no outliers of that kind were identified.

Mol	Type	Chain	Res	Link	Chirals	Torsions	Rings
4	AMP	A	901	-	-	0/10/26/26	0/3/3/3
6	ATP	A	904	5	-	2/22/38/38	0/3/3/3

There are no bond length outliers.

There are no bond angle outliers.

There are no chirality outliers.

All (2) torsion outliers are listed below:

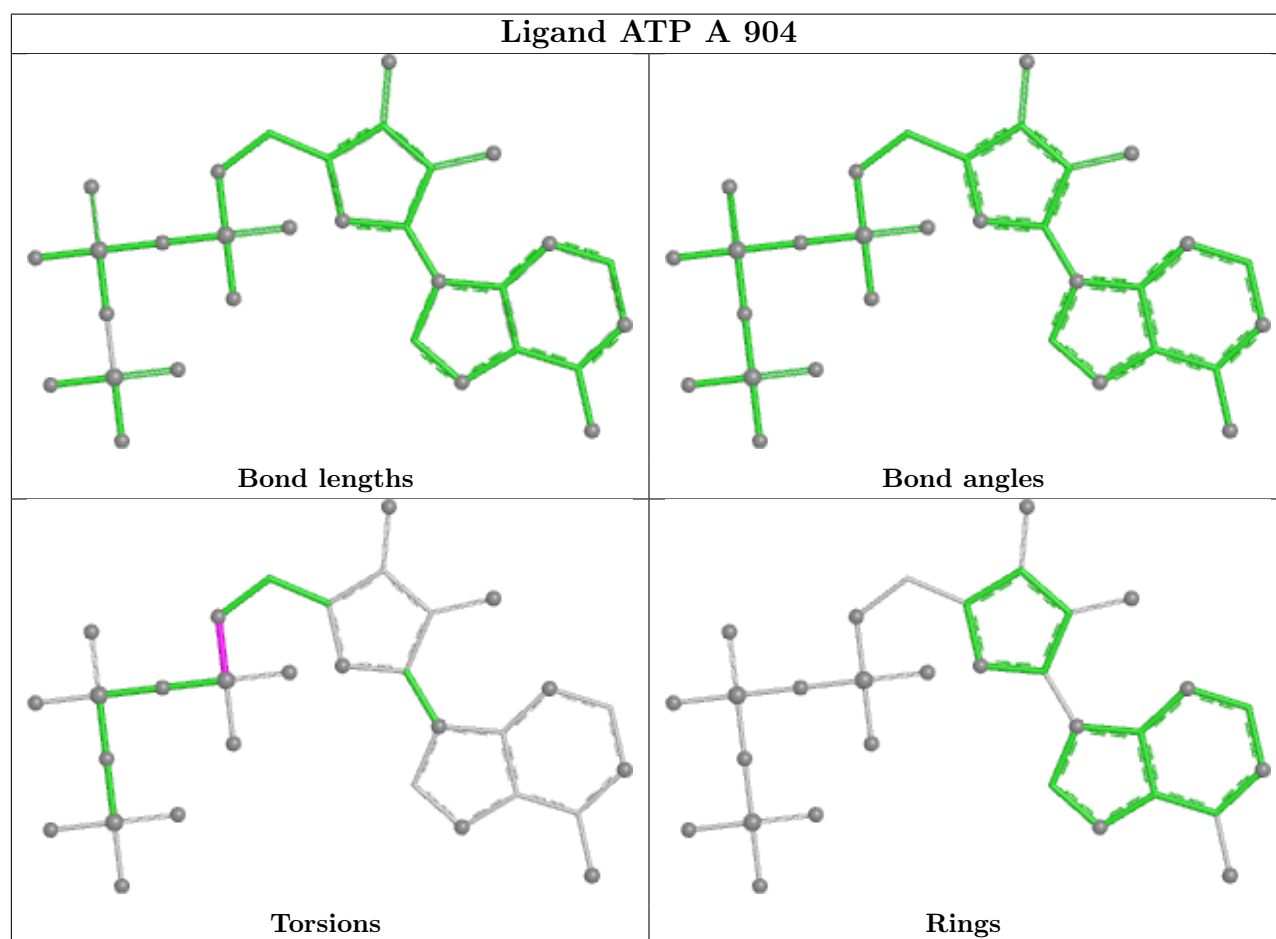
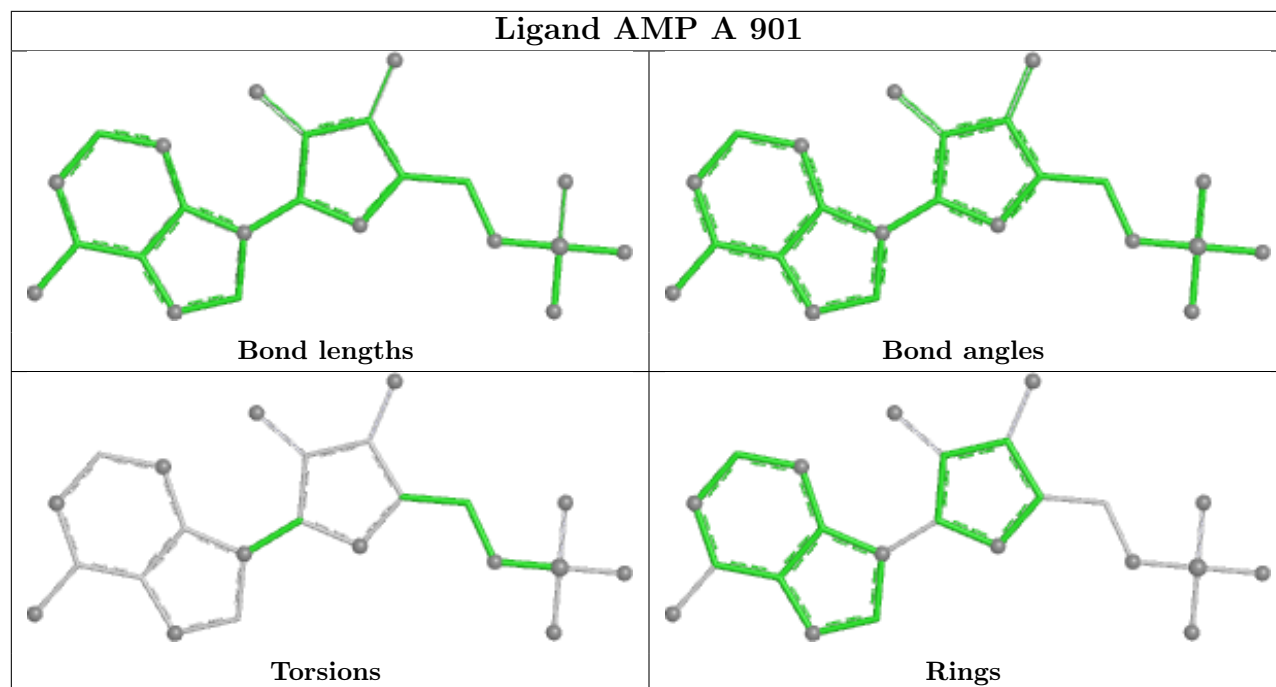
Mol	Chain	Res	Type	Atoms
6	A	904	ATP	C5'-O5'-PA-O2A
6	A	904	ATP	C5'-O5'-PA-O3A

There are no ring outliers.

1 monomer is involved in 1 short contact:

Mol	Chain	Res	Type	Clashes	Symm-Clashes
6	A	904	ATP	1	0

The following is a two-dimensional graphical depiction of Mogul quality analysis of bond lengths, bond angles, torsion angles, and ring geometry for all instances of the Ligand of Interest. In addition, ligands with molecular weight > 250 and outliers as shown on the validation Tables will also be included. For torsion angles, if less than 5% of the Mogul distribution of torsion angles is within 10 degrees of the torsion angle in question, then that torsion angle is considered an outlier. Any bond that is central to one or more torsion angles identified as an outlier by Mogul will be highlighted in the graph. For rings, the root-mean-square deviation (RMSD) between the ring in question and similar rings identified by Mogul is calculated over all ring torsion angles. If the average RMSD is greater than 60 degrees and the minimal RMSD between the ring in question and any Mogul-identified rings is also greater than 60 degrees, then that ring is considered an outlier. The outliers are highlighted in purple. The color gray indicates Mogul did not find sufficient equivalents in the CSD to analyse the geometry.



## 5.7 Other polymers

There are no such residues in this entry.

## 5.8 Polymer linkage issues

There are no chain breaks in this entry.

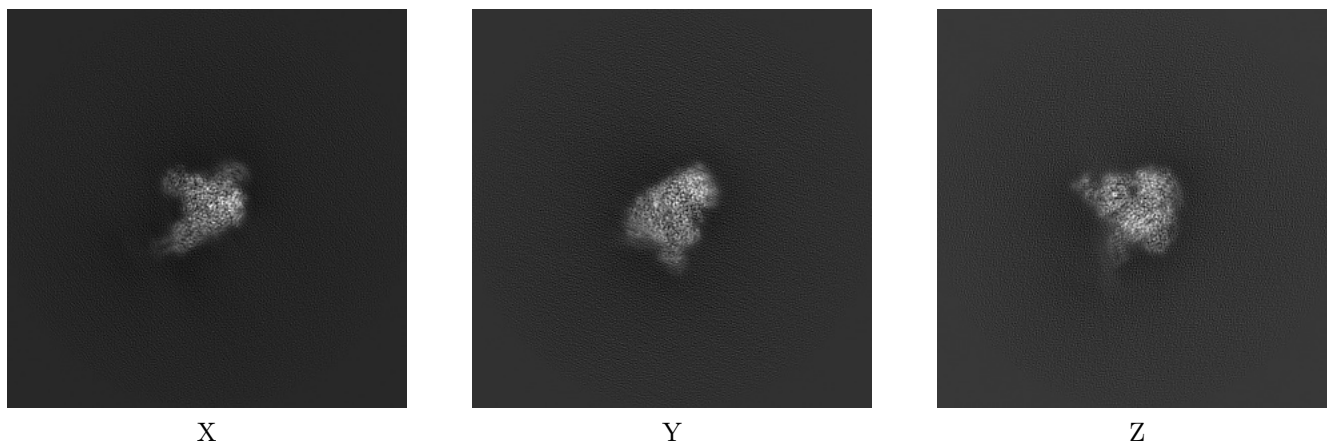
## 6 Map visualisation [i](#)

This section contains visualisations of the EMDB entry EMD-23862. These allow visual inspection of the internal detail of the map and identification of artifacts.

No raw map or half-maps were deposited for this entry and therefore no images, graphs, etc. pertaining to the raw map can be shown.

### 6.1 Orthogonal projections [i](#)

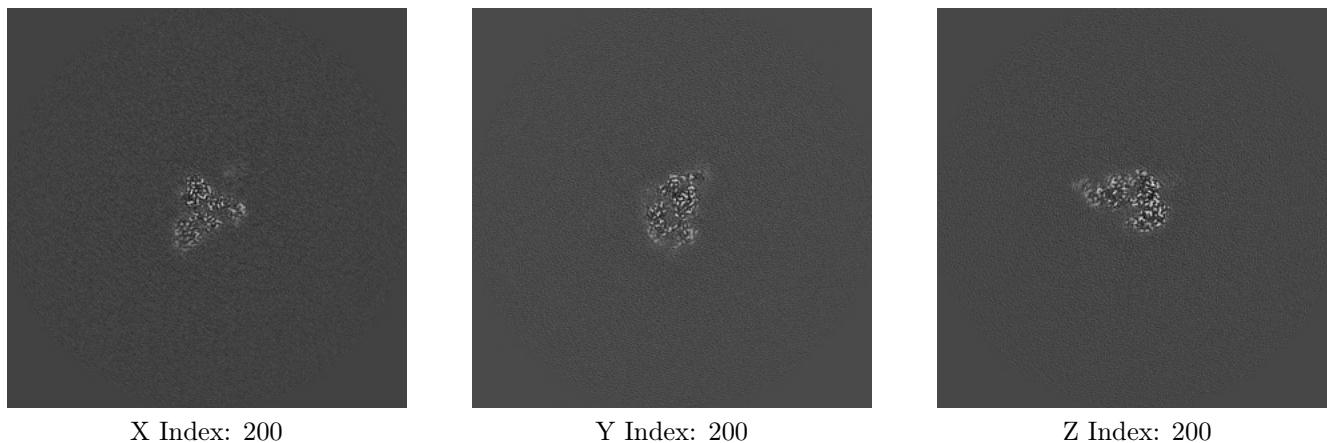
#### 6.1.1 Primary map



The images above show the map projected in three orthogonal directions.

### 6.2 Central slices [i](#)

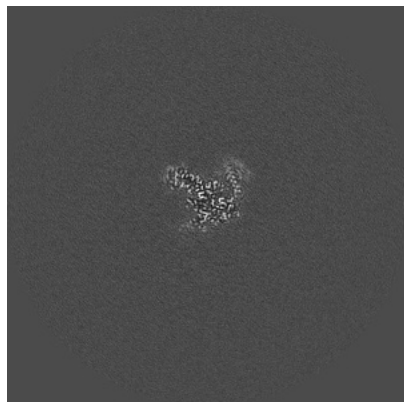
#### 6.2.1 Primary map



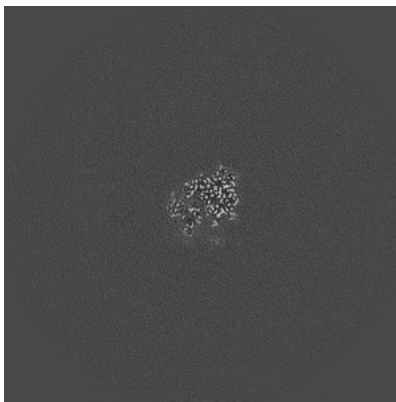
The images above show central slices of the map in three orthogonal directions.

## 6.3 Largest variance slices [\(i\)](#)

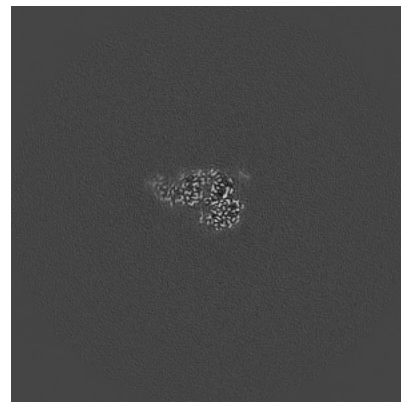
### 6.3.1 Primary map



X Index: 216



Y Index: 191

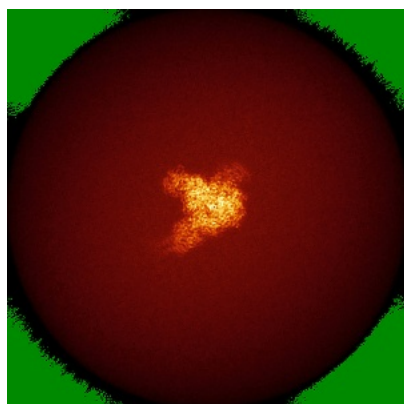


Z Index: 202

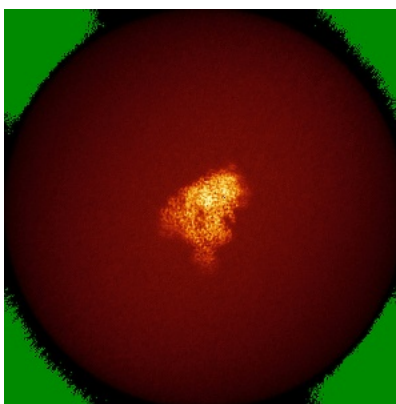
The images above show the largest variance slices of the map in three orthogonal directions.

## 6.4 Orthogonal standard-deviation projections (False-color) [\(i\)](#)

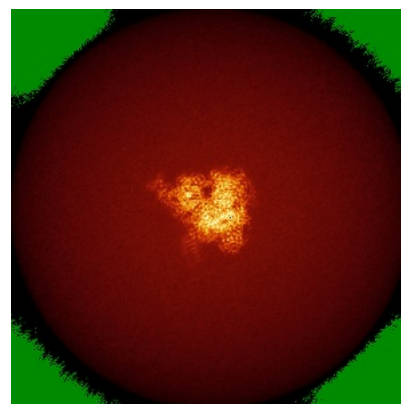
### 6.4.1 Primary map



X



Y

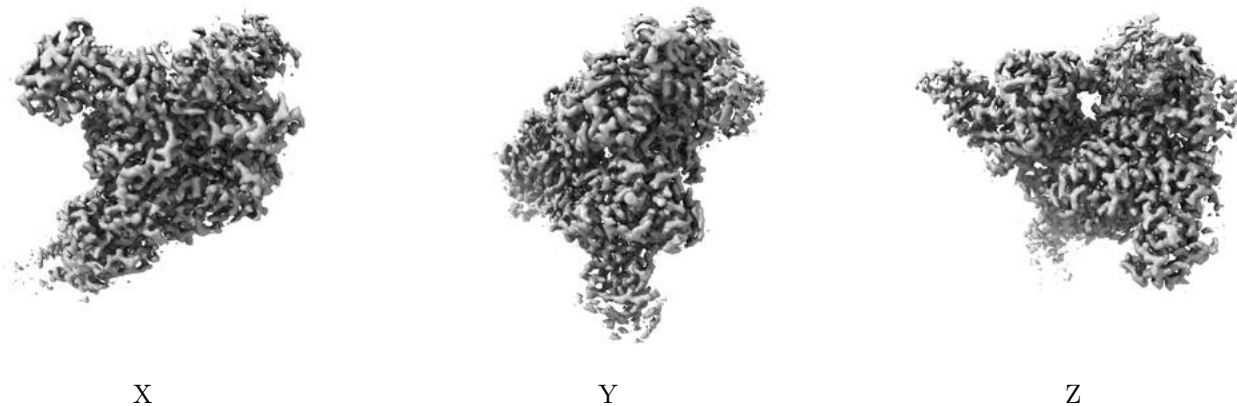


Z

The images above show the map standard deviation projections with false color in three orthogonal directions. Minimum values are shown in green, max in blue, and dark to light orange shades represent small to large values respectively.

## 6.5 Orthogonal surface views [i](#)

### 6.5.1 Primary map



The images above show the 3D surface view of the map at the recommended contour level 0.03. These images, in conjunction with the slice images, may facilitate assessment of whether an appropriate contour level has been provided.

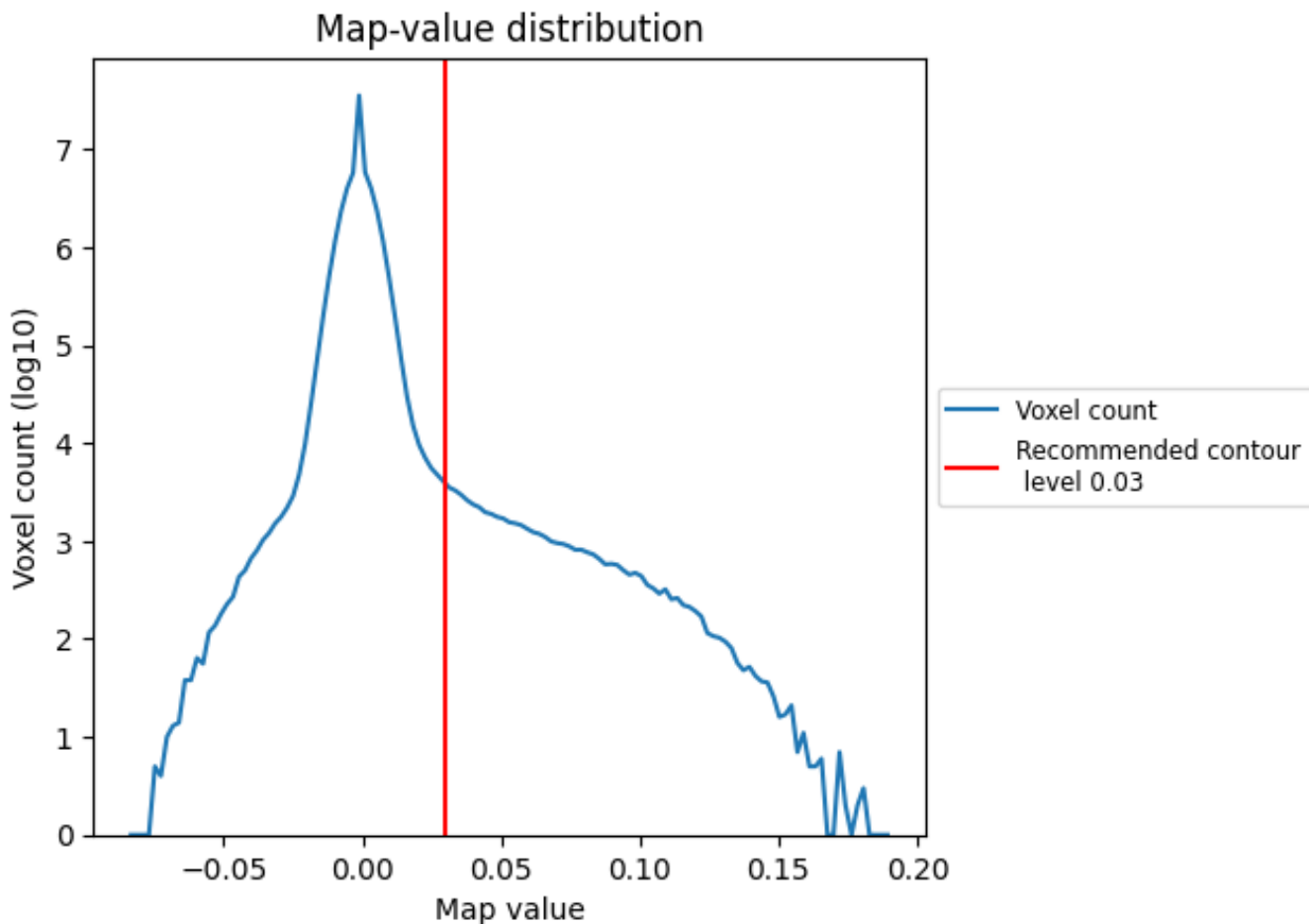
## 6.6 Mask visualisation [i](#)

This section was not generated. No masks/segmentation were deposited.

## 7 Map analysis [i](#)

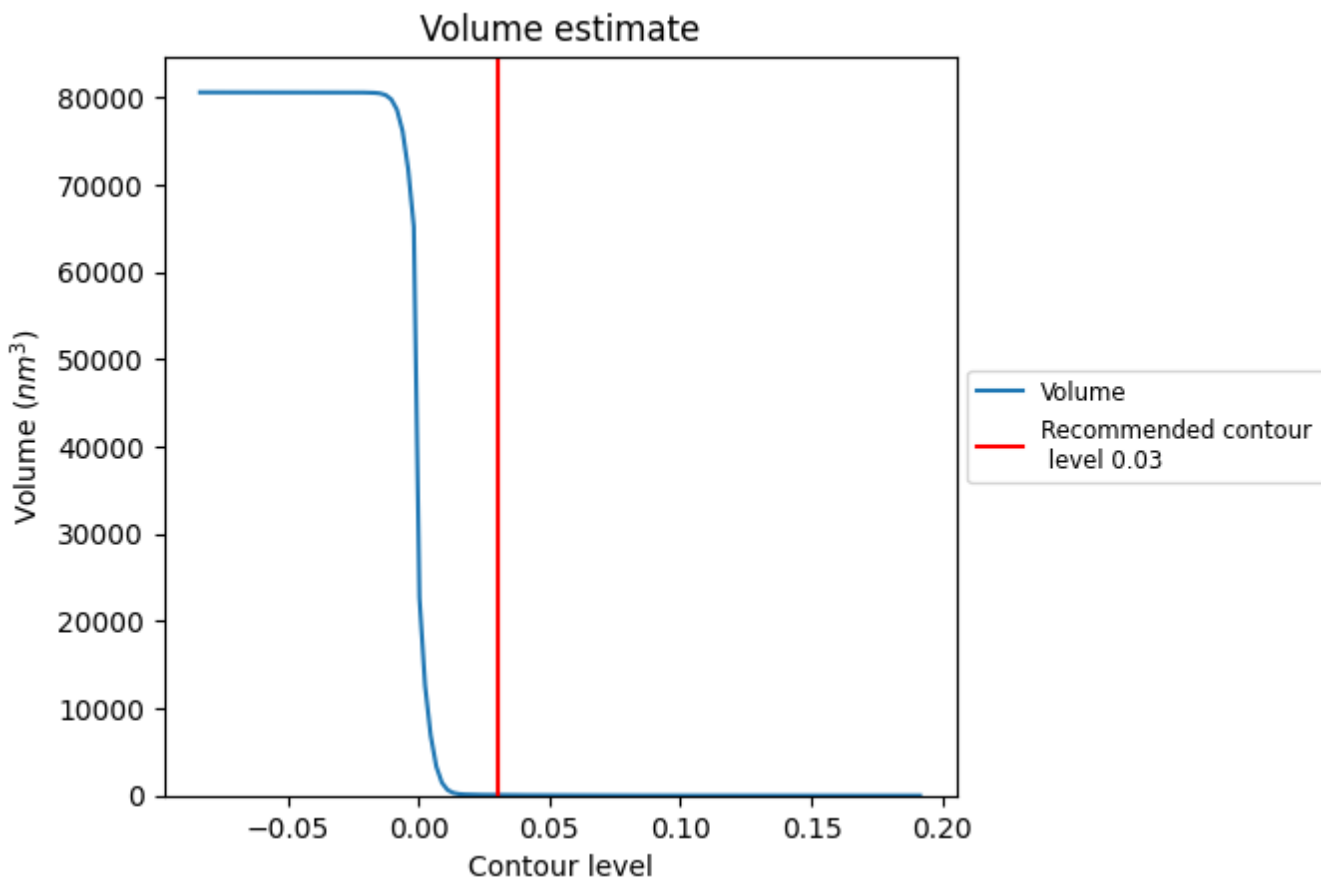
This section contains the results of statistical analysis of the map.

### 7.1 Map-value distribution [i](#)



The map-value distribution is plotted in 128 intervals along the x-axis. The y-axis is logarithmic. A spike in this graph at zero usually indicates that the volume has been masked.

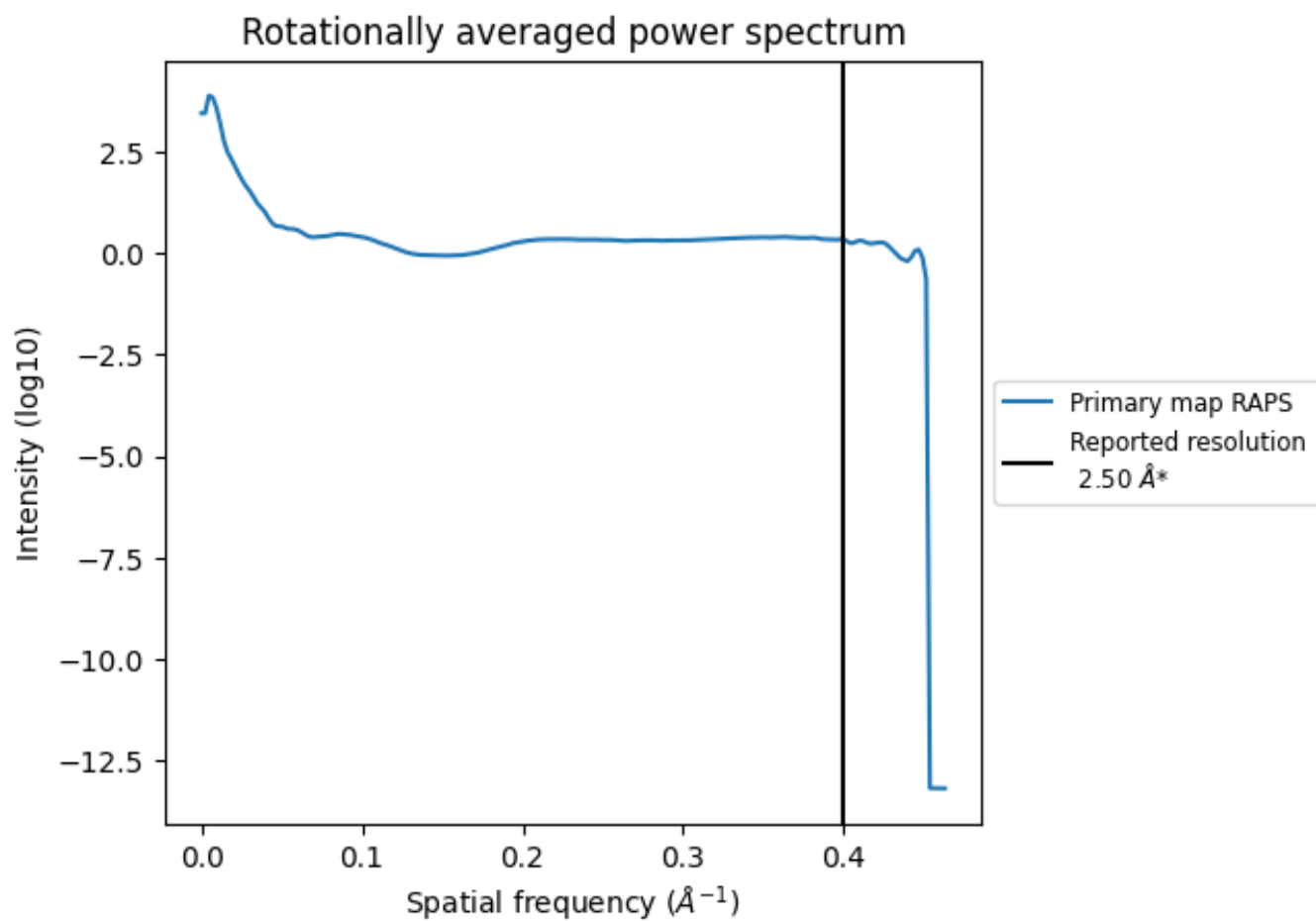
## 7.2 Volume estimate [\(i\)](#)



The volume at the recommended contour level is 64 nm<sup>3</sup>; this corresponds to an approximate mass of 58 kDa.

The volume estimate graph shows how the enclosed volume varies with the contour level. The recommended contour level is shown as a vertical line and the intersection between the line and the curve gives the volume of the enclosed surface at the given level.

### 7.3 Rotationally averaged power spectrum [i](#)



\*Reported resolution corresponds to spatial frequency of 0.400 Å<sup>-1</sup>

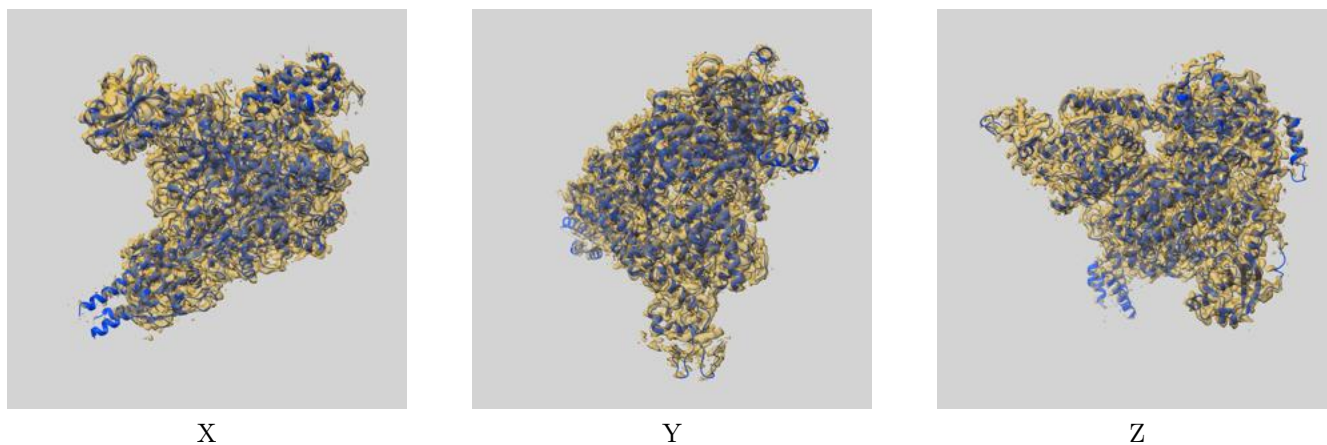
## 8 Fourier-Shell correlation

This section was not generated. No FSC curve or half-maps provided.

## 9 Map-model fit [i](#)

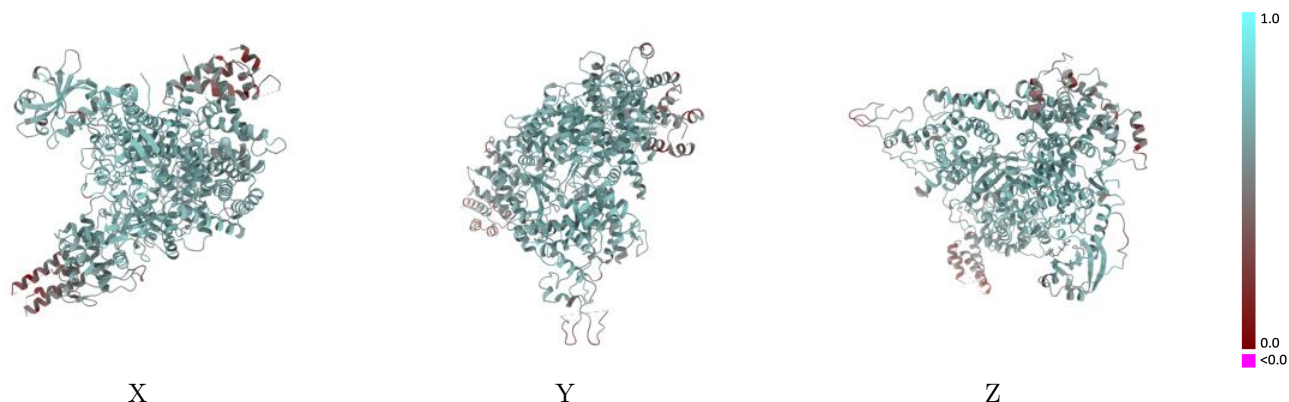
This section contains information regarding the fit between EMDB map EMD-23862 and PDB model 7MIR. Per-residue inclusion information can be found in section 3 on page 6.

### 9.1 Map-model overlay [i](#)



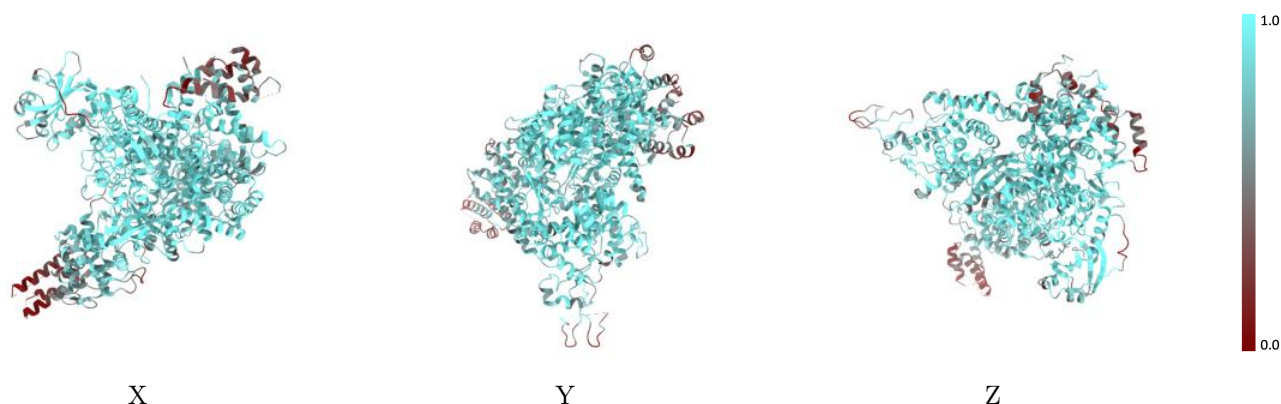
The images above show the 3D surface view of the map at the recommended contour level 0.03 at 50% transparency in yellow overlaid with a ribbon representation of the model coloured in blue. These images allow for the visual assessment of the quality of fit between the atomic model and the map.

## 9.2 Q-score mapped to coordinate model [\(i\)](#)



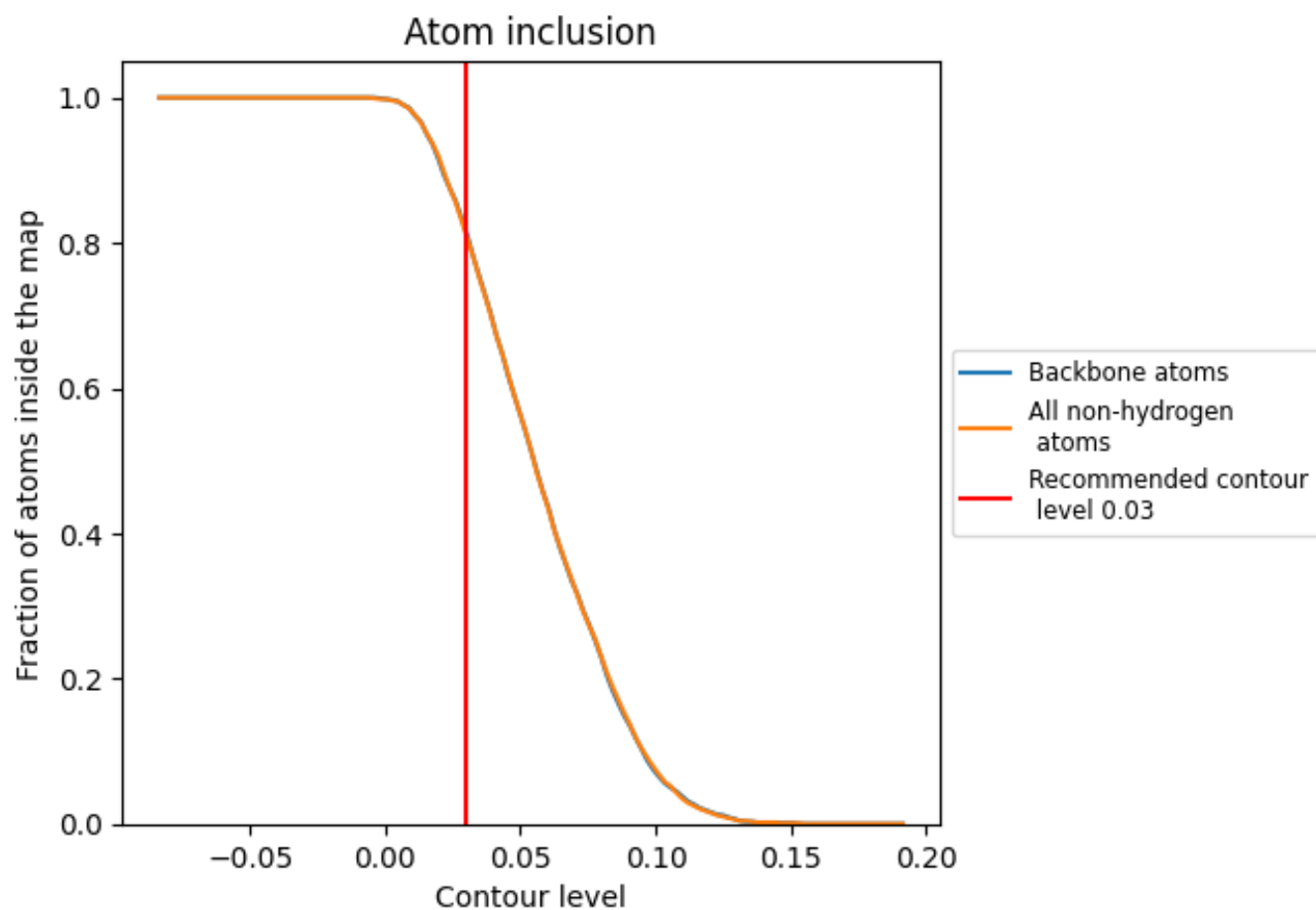
The images above show the model with each residue coloured according to its Q-score. This shows their resolvability in the map with higher Q-score values reflecting better resolvability. Please note: Q-score is calculating the resolvability of atoms, and thus high values are only expected at resolutions at which atoms can be resolved. Low Q-score values may therefore be expected for many entries.

## 9.3 Atom inclusion mapped to coordinate model [\(i\)](#)



The images above show the model with each residue coloured according to its atom inclusion. This shows to what extent they are inside the map at the recommended contour level (0.03).









## 9.4 Atom inclusion [i](#)



At the recommended contour level, 82% of all backbone atoms, 81% of all non-hydrogen atoms, are inside the map.

## 9.5 Map-model fit summary

The table lists the average atom inclusion at the recommended contour level (0.03) and Q-score for the entire model and for each chain.

Chain	Atom inclusion	Q-score
All	 0.8110	 0.6050
A	 0.8890	 0.6430
B	 0.5800	 0.5030
C	 0.7710	 0.5840

