



wwPDB X-ray Structure Validation Summary Report ⓘ

Mar 8, 2026 – 02:15 AM UTC

PDB ID : 3MK6 / pdb_00003mk6
Title : Substrate and Inhibitor Binding to Pank
Authors : Yun, M.-K.; White, S.W.
Deposited on : 2010-04-14
Resolution : 1.98 Å(reported)

This is a wwPDB X-ray Structure Validation Summary Report for a publicly released PDB entry.

We welcome your comments at validation@mail.wwpdb.org

A user guide is available at

<https://www.wwpdb.org/validation/2017/XrayValidationReportHelp>

with specific help available everywhere you see the ⓘ symbol.

The types of validation reports are described at

<http://www.wwpdb.org/validation/2017/FAQs#types>.

The following versions of software and data (see [references ⓘ](#)) were used in the production of this report:

MolProbity : 4-5-2 with Phenix2.0
Mogul : 2022.3.0, CSD as543be (2022)
Xtriage (Phenix) : 2.0
EDS : 3.0
Buster-report : wwPDB partial adaption of 1.1.7 (2018)
Percentile statistics : 20250101.v01 (using entries in the PDB archive January 1st 2025)
CCP4 : 9.0.010 (Gargrove)
Density-Fitness : 1.0.12
Ideal geometry (proteins) : Engh & Huber (2001)
Ideal geometry (DNA, RNA) : Parkinson et al. (1996)
Validation Pipeline (wwPDB-VP) : 2.49

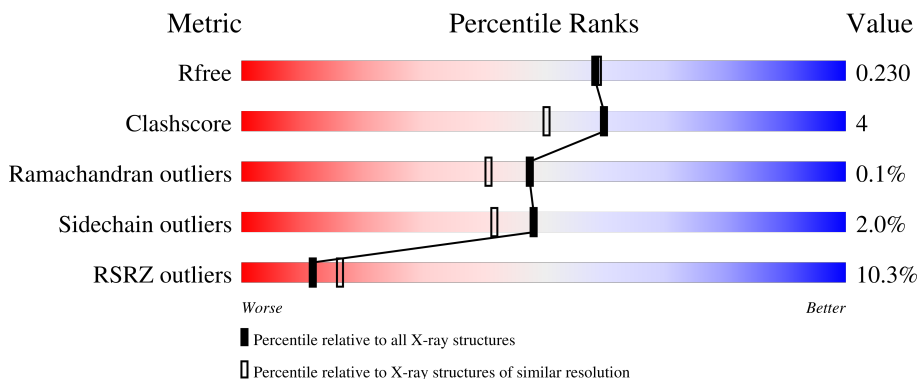
1 Overall quality at a glance

The following experimental techniques were used to determine the structure:

X-RAY DIFFRACTION

The reported resolution of this entry is 1.98 Å.

Percentile scores (ranging between 0-100) for global validation metrics of the entry are shown in the following graphic. The table shows the number of entries on which the scores are based.



Metric	Whole archive (#Entries)	Similar resolution (#Entries, resolution range(Å))
R_{free}	180053	1506 (1.98-1.98)
Clashscore	190562	1534 (1.98-1.98)
Ramachandran outliers	187476	1518 (1.98-1.98)
Sidechain outliers	187428	1518 (1.98-1.98)
RSRZ outliers	180081	1506 (1.98-1.98)

The table below summarises the geometric issues observed across the polymeric chains and their fit to the electron density. The red, orange, yellow and green segments of the lower bar indicate the fraction of residues that contain outliers for ≥ 3 , 2, 1 and 0 types of geometric quality criteria respectively. A grey segment represents the fraction of residues that are not modelled. The numeric value for each fraction is indicated below the corresponding segment, with a dot representing fractions $\leq 5\%$. The upper red bar (where present) indicates the fraction of residues that have poor fit to the electron density. The numeric value is given above the bar.

Mol	Chain	Length	Quality of chain
1	A	376	 9% 83% 10% • 6%
1	B	376	 9% 85% 8% • 7%
1	C	376	 9% 85% 8% 7%
1	D	376	 12% 81% 10% • 8%

2 Entry composition i

There are 4 unique types of molecules in this entry. The entry contains 11582 atoms, of which 0 are hydrogens and 0 are deuteriums.

In the tables below, the ZeroOcc column contains the number of atoms modelled with zero occupancy, the AltConf column contains the number of residues with at least one atom in alternate conformation and the Trace column contains the number of residues modelled with at most 2 atoms.

- Molecule 1 is a protein called Pantothenate kinase 3.

Mol	Chain	Residues	Atoms					ZeroOcc	AltConf	Trace
			Total	C	N	O	S			
1	A	354	2725	1740	454	516	15	0	1	0
1	B	351	2715	1733	457	510	15	0	1	0
1	C	351	2708	1730	450	513	15	0	2	0
1	D	345	2659	1699	444	502	14	0	1	0

There are 76 discrepancies between the modelled and reference sequences:

Chain	Residue	Modelled	Actual	Comment	Reference
A	-7	MET	-	expression tag	UNP Q9H999
A	-6	GLY	-	expression tag	UNP Q9H999
A	-5	SER	-	expression tag	UNP Q9H999
A	-4	SER	-	expression tag	UNP Q9H999
A	-3	HIS	-	expression tag	UNP Q9H999
A	-2	HIS	-	expression tag	UNP Q9H999
A	-1	HIS	-	expression tag	UNP Q9H999
A	0	HIS	-	expression tag	UNP Q9H999
A	1	HIS	-	expression tag	UNP Q9H999
A	2	HIS	-	expression tag	UNP Q9H999
A	3	SER	-	expression tag	UNP Q9H999
A	4	SER	-	expression tag	UNP Q9H999
A	5	GLY	-	expression tag	UNP Q9H999
A	6	LEU	-	expression tag	UNP Q9H999
A	7	VAL	-	expression tag	UNP Q9H999
A	8	PRO	-	expression tag	UNP Q9H999
A	9	ARG	-	expression tag	UNP Q9H999
A	10	GLY	-	expression tag	UNP Q9H999
A	11	SER	-	expression tag	UNP Q9H999
B	-7	MET	-	expression tag	UNP Q9H999
B	-6	GLY	-	expression tag	UNP Q9H999

Continued on next page...

Continued from previous page...

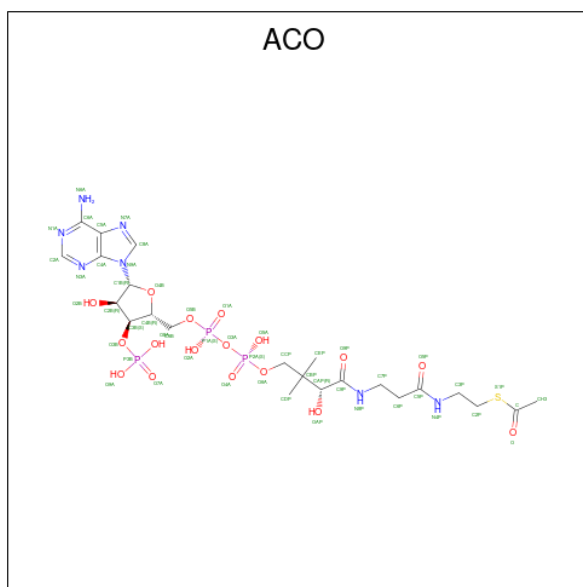
Chain	Residue	Modelled	Actual	Comment	Reference
B	-5	SER	-	expression tag	UNP Q9H999
B	-4	SER	-	expression tag	UNP Q9H999
B	-3	HIS	-	expression tag	UNP Q9H999
B	-2	HIS	-	expression tag	UNP Q9H999
B	-1	HIS	-	expression tag	UNP Q9H999
B	0	HIS	-	expression tag	UNP Q9H999
B	1	HIS	-	expression tag	UNP Q9H999
B	2	HIS	-	expression tag	UNP Q9H999
B	3	SER	-	expression tag	UNP Q9H999
B	4	SER	-	expression tag	UNP Q9H999
B	5	GLY	-	expression tag	UNP Q9H999
B	6	LEU	-	expression tag	UNP Q9H999
B	7	VAL	-	expression tag	UNP Q9H999
B	8	PRO	-	expression tag	UNP Q9H999
B	9	ARG	-	expression tag	UNP Q9H999
B	10	GLY	-	expression tag	UNP Q9H999
B	11	SER	-	expression tag	UNP Q9H999
C	-7	MET	-	expression tag	UNP Q9H999
C	-6	GLY	-	expression tag	UNP Q9H999
C	-5	SER	-	expression tag	UNP Q9H999
C	-4	SER	-	expression tag	UNP Q9H999
C	-3	HIS	-	expression tag	UNP Q9H999
C	-2	HIS	-	expression tag	UNP Q9H999
C	-1	HIS	-	expression tag	UNP Q9H999
C	0	HIS	-	expression tag	UNP Q9H999
C	1	HIS	-	expression tag	UNP Q9H999
C	2	HIS	-	expression tag	UNP Q9H999
C	3	SER	-	expression tag	UNP Q9H999
C	4	SER	-	expression tag	UNP Q9H999
C	5	GLY	-	expression tag	UNP Q9H999
C	6	LEU	-	expression tag	UNP Q9H999
C	7	VAL	-	expression tag	UNP Q9H999
C	8	PRO	-	expression tag	UNP Q9H999
C	9	ARG	-	expression tag	UNP Q9H999
C	10	GLY	-	expression tag	UNP Q9H999
C	11	SER	-	expression tag	UNP Q9H999
D	-7	MET	-	expression tag	UNP Q9H999
D	-6	GLY	-	expression tag	UNP Q9H999
D	-5	SER	-	expression tag	UNP Q9H999
D	-4	SER	-	expression tag	UNP Q9H999
D	-3	HIS	-	expression tag	UNP Q9H999
D	-2	HIS	-	expression tag	UNP Q9H999

Continued on next page...

Continued from previous page...

Chain	Residue	Modelled	Actual	Comment	Reference
D	-1	HIS	-	expression tag	UNP Q9H999
D	0	HIS	-	expression tag	UNP Q9H999
D	1	HIS	-	expression tag	UNP Q9H999
D	2	HIS	-	expression tag	UNP Q9H999
D	3	SER	-	expression tag	UNP Q9H999
D	4	SER	-	expression tag	UNP Q9H999
D	5	GLY	-	expression tag	UNP Q9H999
D	6	LEU	-	expression tag	UNP Q9H999
D	7	VAL	-	expression tag	UNP Q9H999
D	8	PRO	-	expression tag	UNP Q9H999
D	9	ARG	-	expression tag	UNP Q9H999
D	10	GLY	-	expression tag	UNP Q9H999
D	11	SER	-	expression tag	UNP Q9H999

- Molecule 2 is ACETYL COENZYME *A (CCD ID: ACO) (formula: $C_{23}H_{38}N_7O_{17}P_3S$).



Mol	Chain	Residues	Atoms					ZeroOcc	AltConf	
			Total	C	N	O	P			S
2	A	1	Total	C	N	O	P	S	0	0
			51	23	7	17	3	1		
2	B	1	Total	C	N	O	P	S	0	0
			51	23	7	17	3	1		
2	C	1	Total	C	N	O	P	S	0	0
			51	23	7	17	3	1		
2	D	1	Total	C	N	O	P	S	0	0
			51	23	7	17	3	1		

- Molecule 3 is GLYCEROL (CCD ID: GOL) (formula: $C_3H_8O_3$).



Mol	Chain	Residues	Atoms	ZeroOcc	AltConf
3	A	1	Total C O 6 3 3	0	0
3	A	1	Total C O 6 3 3	0	0
3	A	1	Total C O 6 3 3	0	0
3	B	1	Total C O 6 3 3	0	0
3	C	1	Total C O 6 3 3	0	0
3	C	1	Total C O 6 3 3	0	0
3	D	1	Total C O 6 3 3	0	0
3	D	1	Total C O 6 3 3	0	0

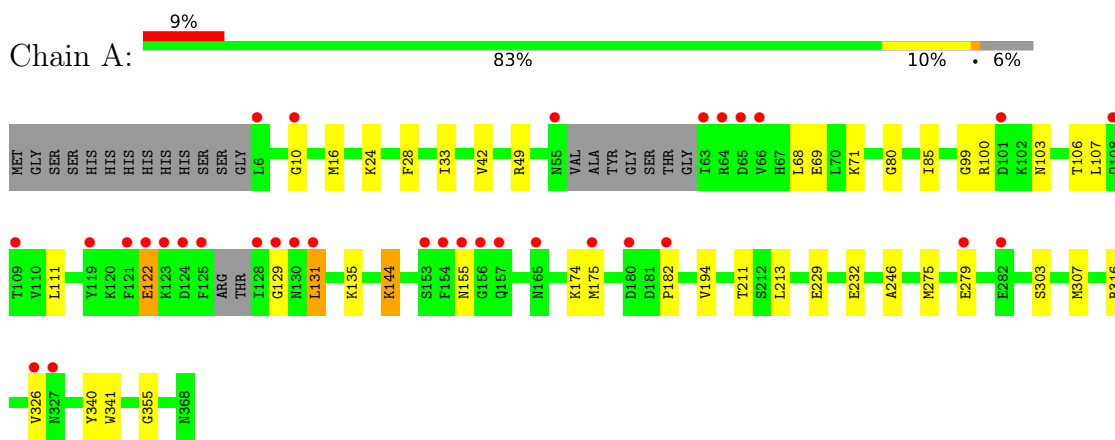
- Molecule 4 is water.

Mol	Chain	Residues	Atoms	ZeroOcc	AltConf
4	A	150	Total O 150 150	0	0
4	B	105	Total O 105 105	0	0
4	C	144	Total O 144 144	0	0
4	D	124	Total O 124 124	0	0

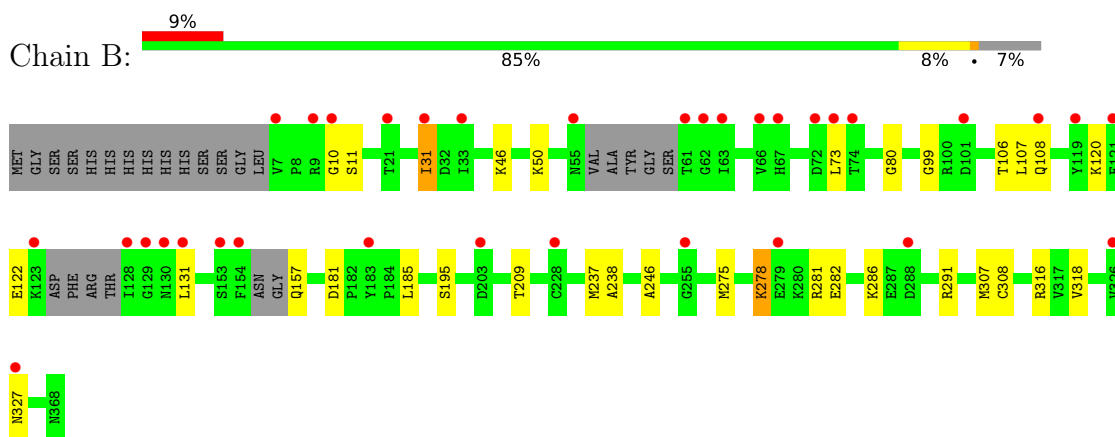
3 Residue-property plots [i](#)

These plots are drawn for all protein, RNA, DNA and oligosaccharide chains in the entry. The first graphic for a chain summarises the proportions of the various outlier classes displayed in the second graphic. The second graphic shows the sequence view annotated by issues in geometry and electron density. Residues are color-coded according to the number of geometric quality criteria for which they contain at least one outlier: green = 0, yellow = 1, orange = 2 and red = 3 or more. A red dot above a residue indicates a poor fit to the electron density ($RSRZ > 2$). Stretches of 2 or more consecutive residues without any outlier are shown as a green connector. Residues present in the sample, but not in the model, are shown in grey.

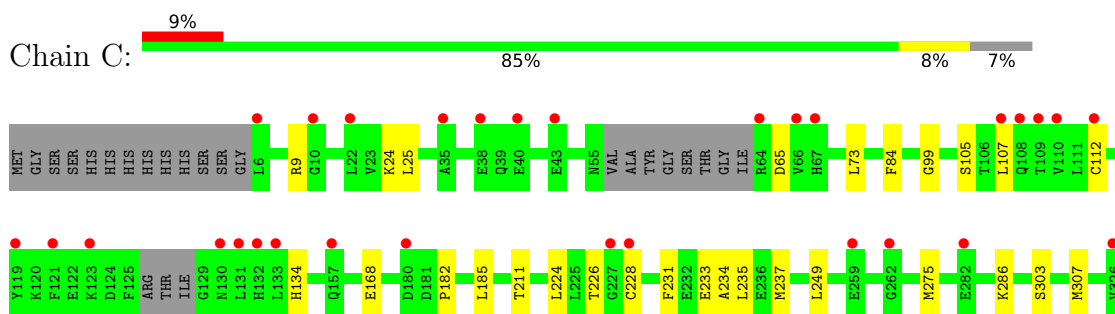
- Molecule 1: Pantothenate kinase 3

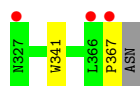


- Molecule 1: Pantothenate kinase 3



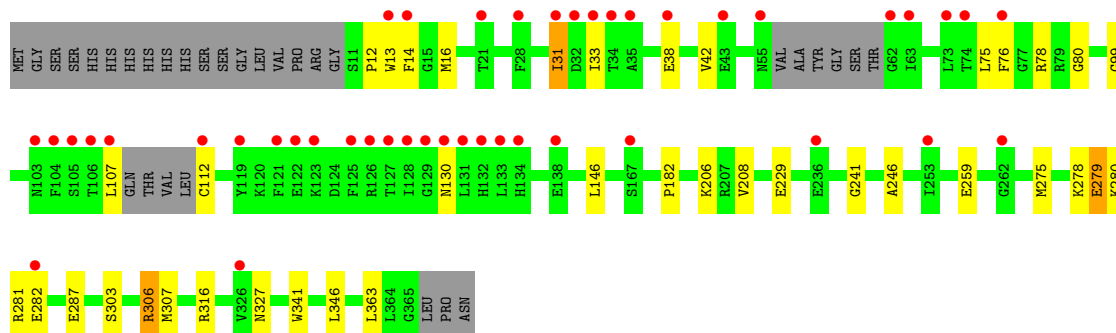
- Molecule 1: Pantothenate kinase 3





- Molecule 1: Pantothenate kinase 3

Chain D: 12% 81% 10% 8%



4 Data and refinement statistics

Property	Value	Source
Space group	P 1 21 1	Depositor
Cell constants a, b, c, α , β , γ	56.71Å 180.38Å 77.42Å 90.00° 95.48° 90.00°	Depositor
Resolution (Å)	50.00 – 1.98 50.00 – 1.98	Depositor EDS
% Data completeness (in resolution range)	99.1 (50.00-1.98) 99.0 (50.00-1.98)	Depositor EDS
R_{merge}	(Not available)	Depositor
R_{sym}	0.09	Depositor
$\langle I/\sigma(I) \rangle$ ¹	1.26 (at 1.97Å)	Xtrriage
Refinement program	REFMAC 5.2.0019	Depositor
R, R_{free}	0.185 , 0.232 0.185 , 0.230	Depositor DCC
R_{free} test set	5315 reflections (4.99%)	wwPDB-VP
Wilson B-factor (Å ²)	29.2	Xtrriage
Anisotropy	0.450	Xtrriage
Bulk solvent k_{sol} (e/Å ³), B_{sol} (Å ²)	0.36 , 37.6	EDS
L-test for twinning ²	$\langle L \rangle = 0.50$, $\langle L^2 \rangle = 0.33$	Xtrriage
Estimated twinning fraction	No twinning to report.	Xtrriage
F_o, F_c correlation	0.95	EDS
Total number of atoms	11582	wwPDB-VP
Average B, all atoms (Å ²)	33.0	wwPDB-VP

Xtrriage's analysis on translational NCS is as follows: *The largest off-origin peak in the Patterson function is 4.65% of the height of the origin peak. No significant pseudotranslation is detected.*

¹Intensities estimated from amplitudes.

²Theoretical values of $\langle |L| \rangle$, $\langle L^2 \rangle$ for acentric reflections are 0.5, 0.333 respectively for untwinned datasets, and 0.375, 0.2 for perfectly twinned datasets.

5 Model quality [i](#)

5.1 Standard geometry [i](#)

Bond lengths and bond angles in the following residue types are not validated in this section: GOL, ACO

The Z score for a bond length (or angle) is the number of standard deviations the observed value is removed from the expected value. A bond length (or angle) with $|Z| > 5$ is considered an outlier worth inspection. RMSZ is the root-mean-square of all Z scores of the bond lengths (or angles).

Mol	Chain	Bond lengths		Bond angles	
		RMSZ	# Z >5	RMSZ	# Z >5
1	A	0.84	0/2781	0.91	4/3758 (0.1%)
1	B	0.74	0/2770	0.88	1/3738 (0.0%)
1	C	0.79	0/2768	0.90	2/3741 (0.1%)
1	D	0.80	0/2714	0.89	1/3663 (0.0%)
All	All	0.79	0/11033	0.89	8/14900 (0.1%)

There are no bond length outliers.

The worst 5 of 8 bond angle outliers are listed below:

Mol	Chain	Res	Type	Atoms	Z	Observed(°)	Ideal(°)
1	A	122	GLU	N-CA-C	6.11	123.82	110.80
1	C	168	GLU	CA-C-N	5.89	125.76	119.28
1	C	168	GLU	C-N-CA	5.89	125.76	119.28
1	B	122	GLU	N-CA-C	-5.41	105.07	110.97
1	A	103	ASN	N-CA-C	5.24	118.95	112.24

There are no chirality outliers.

There are no planarity outliers.

5.2 Too-close contacts [i](#)

In the following table, the Non-H and H(model) columns list the number of non-hydrogen atoms and hydrogen atoms in the chain respectively. The H(added) column lists the number of hydrogen atoms added and optimized by MolProbity. The Clashes column lists the number of clashes within the asymmetric unit, whereas Symm-Clashes lists symmetry-related clashes.

Mol	Chain	Non-H	H(model)	H(added)	Clashes	Symm-Clashes
1	A	2725	0	2667	33	0
1	B	2715	0	2674	22	0

Continued on next page...

Continued from previous page...

Mol	Chain	Non-H	H(model)	H(added)	Clashes	Symm-Clashes
1	C	2708	0	2644	20	0
1	D	2659	0	2603	25	0
2	A	51	0	34	1	0
2	B	51	0	34	0	0
2	C	51	0	34	0	0
2	D	51	0	34	0	0
3	A	18	0	24	2	0
3	B	6	0	8	0	0
3	C	12	0	16	0	0
3	D	12	0	16	2	0
4	A	150	0	0	2	0
4	B	105	0	0	1	0
4	C	144	0	0	0	0
4	D	124	0	0	2	0
All	All	11582	0	10788	93	0

The all-atom clashscore is defined as the number of clashes found per 1000 atoms (including hydrogen atoms). The all-atom clashscore for this structure is 4.

The worst 5 of 93 close contacts within the same asymmetric unit are listed below, sorted by their clash magnitude.

Atom-1	Atom-2	Interatomic distance (Å)	Clash overlap (Å)
1:C:228:CYS:HB3	1:C:237:MET:HE1	1.28	1.13
1:C:228:CYS:HB3	1:C:237:MET:CE	1.94	0.98
1:A:100:ARG:HH21	1:A:131:LEU:HD22	1.42	0.83
1:A:10:GLY:HA3	1:A:106:THR:HG23	1.61	0.82
1:A:246:ALA:HA	1:A:275:MET:HE3	1.61	0.80

There are no symmetry-related clashes.

5.3 Torsion angles [i](#)

5.3.1 Protein backbone [i](#)

In the following table, the Percentiles column shows the percent Ramachandran outliers of the chain as a percentile score with respect to all X-ray entries followed by that with respect to entries of similar resolution.

The Analysed column shows the number of residues for which the backbone conformation was analysed, and the total number of residues.

Mol	Chain	Analysed	Favoured	Allowed	Outliers	Percentiles	
1	A	349/376 (93%)	341 (98%)	7 (2%)	1 (0%)	36	27
1	B	344/376 (92%)	338 (98%)	6 (2%)	0	100	100
1	C	347/376 (92%)	341 (98%)	6 (2%)	0	100	100
1	D	340/376 (90%)	336 (99%)	3 (1%)	1 (0%)	36	27
All	All	1380/1504 (92%)	1356 (98%)	22 (2%)	2 (0%)	48	41

All (2) Ramachandran outliers are listed below:

Mol	Chain	Res	Type
1	A	122	GLU
1	D	327	ASN

5.3.2 Protein sidechains [i](#)

In the following table, the Percentiles column shows the percent sidechain outliers of the chain as a percentile score with respect to all X-ray entries followed by that with respect to entries of similar resolution.

The Analysed column shows the number of residues for which the sidechain conformation was analysed, and the total number of residues.

Mol	Chain	Analysed	Rotameric	Outliers	Percentiles	
1	A	289/316 (92%)	286 (99%)	3 (1%)	68	65
1	B	289/316 (92%)	282 (98%)	7 (2%)	43	35
1	C	288/316 (91%)	283 (98%)	5 (2%)	53	48
1	D	281/316 (89%)	273 (97%)	8 (3%)	38	29
All	All	1147/1264 (91%)	1124 (98%)	23 (2%)	48	42

5 of 23 residues with a non-rotameric sidechain are listed below:

Mol	Chain	Res	Type
1	C	249	LEU
1	D	112	CYS
1	D	75	LEU
1	D	130	ASN
1	B	108	GLN

Sometimes sidechains can be flipped to improve hydrogen bonding and reduce clashes. 5 of 18 such sidechains are listed below:

Mol	Chain	Res	Type
1	C	311	ASN
1	D	300	ASN
1	D	173	GLN
1	B	165	ASN
1	C	300	ASN

5.3.3 RNA [i](#)

There are no RNA molecules in this entry.

5.4 Non-standard residues in protein, DNA, RNA chains [i](#)

There are no non-standard protein/DNA/RNA residues in this entry.

5.5 Carbohydrates [i](#)

There are no oligosaccharides in this entry.

5.6 Ligand geometry [i](#)

12 ligands are modelled in this entry.

In the following table, the Counts columns list the number of bonds (or angles) for which Mogul statistics could be retrieved, the number of bonds (or angles) that are observed in the model and the number of bonds (or angles) that are defined in the Chemical Component Dictionary. The Link column lists molecule types, if any, to which the group is linked. The Z score for a bond length (or angle) is the number of standard deviations the observed value is removed from the expected value. A bond length (or angle) with $|Z| > 2$ is considered an outlier worth inspection. RMSZ is the root-mean-square of all Z scores of the bond lengths (or angles).

Mol	Type	Chain	Res	Link	Bond lengths			Bond angles		
					Counts	RMSZ	# Z > 2	Counts	RMSZ	# Z > 2
3	GOL	D	370	-	5,5,5	0.40	0	5,5,5	0.71	0
2	ACO	D	1904	-	51,53,53	1.13	4 (7%)	73,79,79	1.63	12 (16%)
3	GOL	D	369	-	5,5,5	0.37	0	5,5,5	0.63	0
3	GOL	C	370	-	5,5,5	0.48	0	5,5,5	1.27	0
3	GOL	C	369	-	5,5,5	0.51	0	5,5,5	0.48	0
3	GOL	B	369	-	5,5,5	0.46	0	5,5,5	0.69	0
3	GOL	A	370	-	5,5,5	0.37	0	5,5,5	0.41	0
2	ACO	B	1902	-	51,53,53	1.22	5 (9%)	73,79,79	1.68	17 (23%)
3	GOL	A	371	-	5,5,5	0.25	0	5,5,5	0.68	0

Mol	Type	Chain	Res	Link	Bond lengths			Bond angles		
					Counts	RMSZ	# Z > 2	Counts	RMSZ	# Z > 2
2	ACO	A	1901	-	51,53,53	1.13	6 (11%)	73,79,79	1.61	14 (19%)
3	GOL	A	369	-	5,5,5	0.50	0	5,5,5	0.72	0
2	ACO	C	1903	-	51,53,53	1.07	3 (5%)	73,79,79	1.58	15 (20%)

In the following table, the Chirals column lists the number of chiral outliers, the number of chiral centers analysed, the number of these observed in the model and the number defined in the Chemical Component Dictionary. Similar counts are reported in the Torsion and Rings columns. '-' means no outliers of that kind were identified.

Mol	Type	Chain	Res	Link	Chirals	Torsions	Rings
3	GOL	D	370	-	-	2/4/4/4	-
2	ACO	D	1904	-	-	3/51/67/67	0/3/3/3
3	GOL	D	369	-	-	1/4/4/4	-
3	GOL	C	370	-	-	4/4/4/4	-
3	GOL	C	369	-	-	0/4/4/4	-
3	GOL	B	369	-	-	0/4/4/4	-
3	GOL	A	370	-	-	2/4/4/4	-
2	ACO	B	1902	-	-	2/51/67/67	0/3/3/3
3	GOL	A	371	-	-	2/4/4/4	-
2	ACO	A	1901	-	-	3/51/67/67	0/3/3/3
3	GOL	A	369	-	-	0/4/4/4	-
2	ACO	C	1903	-	-	2/51/67/67	0/3/3/3

The worst 5 of 18 bond length outliers are listed below:

Mol	Chain	Res	Type	Atoms	Z	Observed(Å)	Ideal(Å)
2	D	1904	ACO	O-C	4.20	1.42	1.21
2	B	1902	ACO	O-C	4.04	1.41	1.21
2	C	1903	ACO	O-C	4.02	1.41	1.21
2	A	1901	ACO	O-C	4.02	1.41	1.21
2	B	1902	ACO	P1A-O3A	3.94	1.63	1.59

The worst 5 of 58 bond angle outliers are listed below:

Mol	Chain	Res	Type	Atoms	Z	Observed(°)	Ideal(°)
2	B	1902	ACO	N3A-C2A-N1A	-5.55	120.17	128.58
2	D	1904	ACO	N3A-C2A-N1A	-5.31	120.54	128.58
2	C	1903	ACO	N3A-C2A-N1A	-5.06	120.93	128.58
2	A	1901	ACO	N3A-C2A-N1A	-5.02	120.98	128.58
2	C	1903	ACO	C5A-C4A-N3A	-4.98	119.86	126.72

There are no chirality outliers.

5 of 21 torsion outliers are listed below:

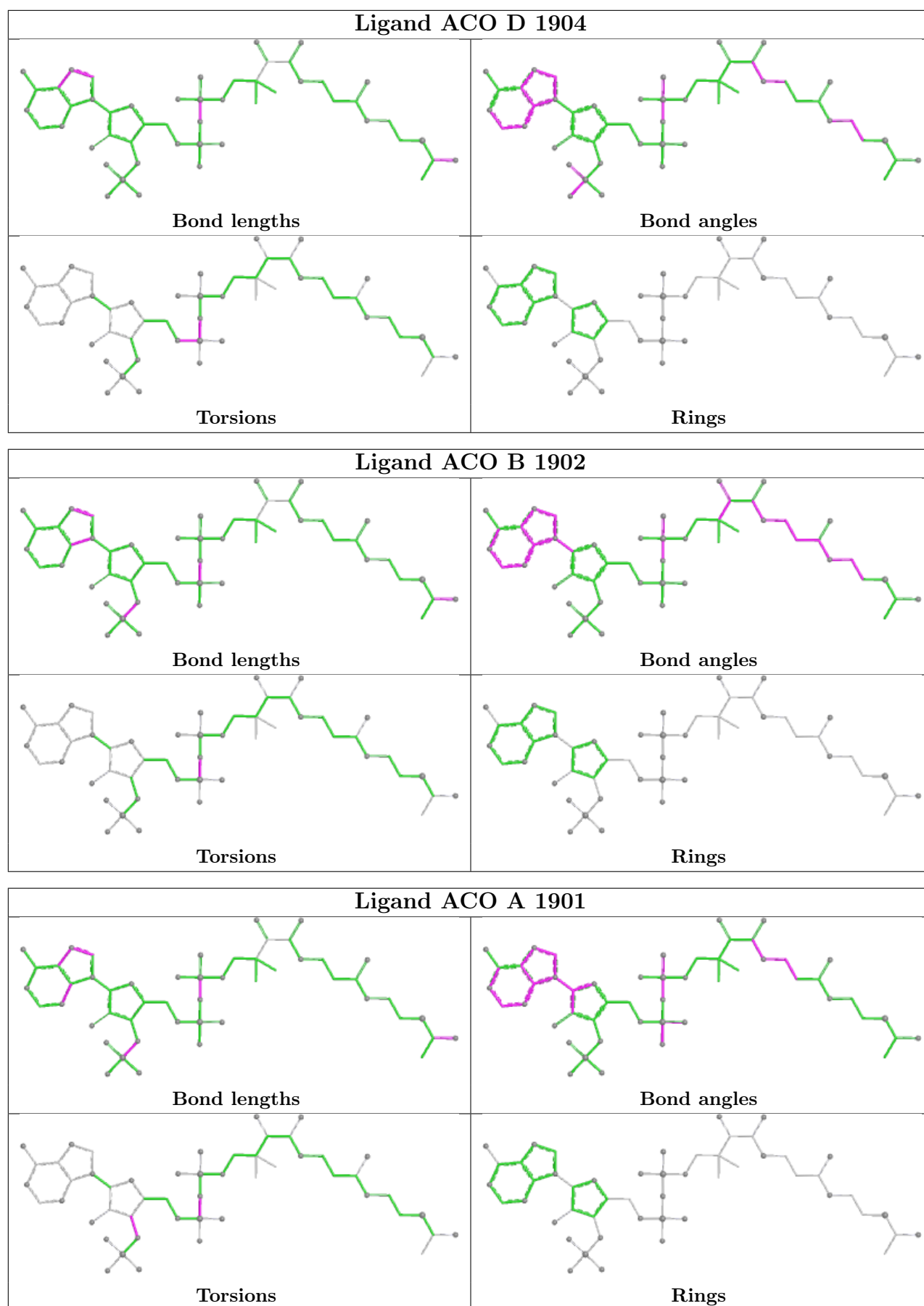
Mol	Chain	Res	Type	Atoms
3	A	371	GOL	C1-C2-C3-O3
3	C	370	GOL	O1-C1-C2-C3
3	D	370	GOL	C1-C2-C3-O3
3	A	371	GOL	O2-C2-C3-O3
3	C	370	GOL	O1-C1-C2-O2

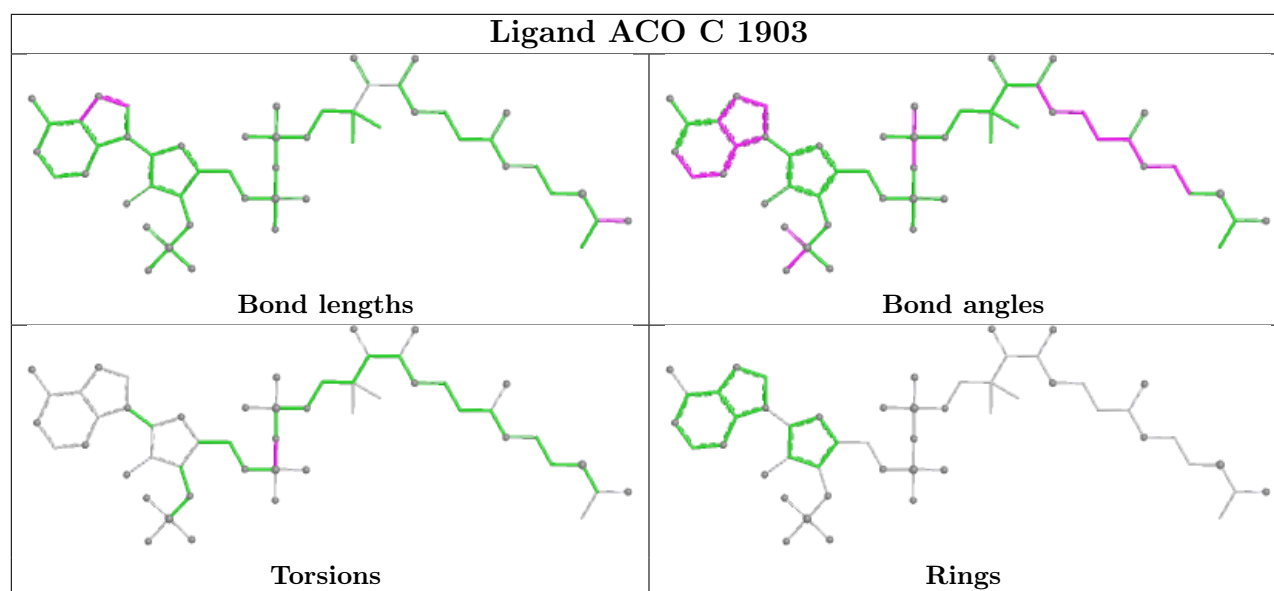
There are no ring outliers.

3 monomers are involved in 5 short contacts:

Mol	Chain	Res	Type	Clashes	Symm-Clashes
3	D	370	GOL	2	0
3	A	370	GOL	2	0
2	A	1901	ACO	1	0

The following is a two-dimensional graphical depiction of Mogul quality analysis of bond lengths, bond angles, torsion angles, and ring geometry for all instances of the Ligand of Interest. In addition, ligands with molecular weight > 250 and outliers as shown on the validation Tables will also be included. For torsion angles, if less than 5% of the Mogul distribution of torsion angles is within 10 degrees of the torsion angle in question, then that torsion angle is considered an outlier. Any bond that is central to one or more torsion angles identified as an outlier by Mogul will be highlighted in the graph. For rings, the root-mean-square deviation (RMSD) between the ring in question and similar rings identified by Mogul is calculated over all ring torsion angles. If the average RMSD is greater than 60 degrees and the minimal RMSD between the ring in question and any Mogul-identified rings is also greater than 60 degrees, then that ring is considered an outlier. The outliers are highlighted in purple. The color gray indicates Mogul did not find sufficient equivalents in the CSD to analyse the geometry.





5.7 Other polymers [i](#)

There are no such residues in this entry.

5.8 Polymer linkage issues [i](#)

There are no chain breaks in this entry.

6 Fit of model and data [i](#)

6.1 Protein, DNA and RNA chains [i](#)

In the following table, the column labelled ‘#RSRZ> 2’ contains the number (and percentage) of RSRZ outliers, followed by percent RSRZ outliers for the chain as percentile scores relative to all X-ray entries and entries of similar resolution. The OWAB column contains the minimum, median, 95th percentile and maximum values of the occupancy-weighted average B-factor per residue. The column labelled ‘Q< 0.9’ lists the number of (and percentage) of residues with an average occupancy less than 0.9.

Mol	Chain	Analysed	<RSRZ>	#RSRZ>2	OWAB(Å ²)	Q<0.9
1	A	354/376 (94%)	0.61	33 (9%) 14 20	17, 29, 44, 52	1 (0%)
1	B	351/376 (93%)	0.82	34 (9%) 13 19	19, 33, 48, 59	1 (0%)
1	C	351/376 (93%)	0.62	33 (9%) 14 19	15, 31, 49, 59	2 (0%)
1	D	345/376 (91%)	0.76	44 (12%) 7 11	16, 32, 55, 65	1 (0%)
All	All	1401/1504 (93%)	0.70	144 (10%) 12 16	15, 31, 48, 65	5 (0%)

The worst 5 of 144 RSRZ outliers are listed below:

Mol	Chain	Res	Type	RSRZ
1	D	128	ILE	9.3
1	C	109	THR	5.1
1	A	125	PHE	4.7
1	B	61	THR	4.6
1	B	63	ILE	4.6

6.2 Non-standard residues in protein, DNA, RNA chains [i](#)

There are no non-standard protein/DNA/RNA residues in this entry.

6.3 Carbohydrates [i](#)

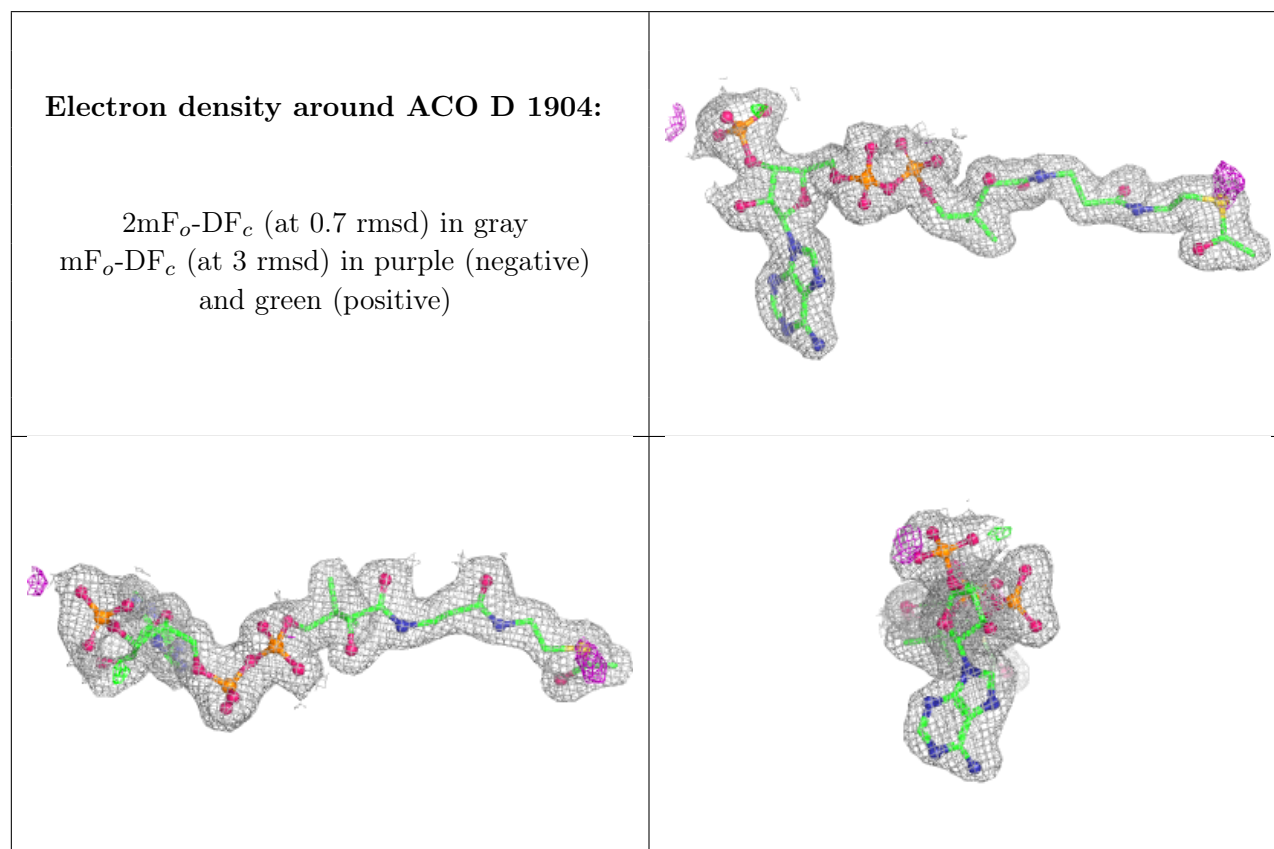
There are no oligosaccharides in this entry.

6.4 Ligands [i](#)

In the following table, the Atoms column lists the number of modelled atoms in the group and the number defined in the chemical component dictionary. The B-factors column lists the minimum, median, 95th percentile and maximum values of B factors of atoms in the group. The column labelled ‘Q< 0.9’ lists the number of atoms with occupancy less than 0.9.

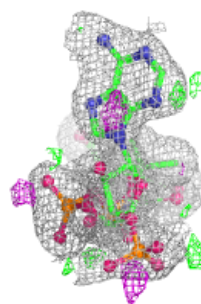
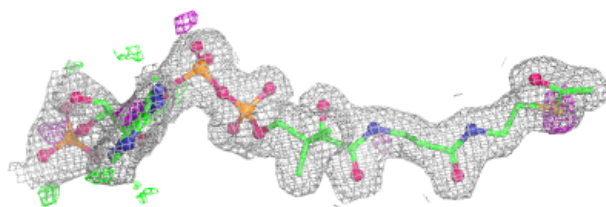
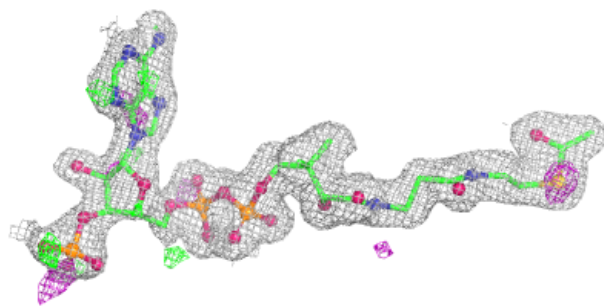
Mol	Type	Chain	Res	Atoms	RSCC	RSR	B-factors(\AA^2)	Q<0.9
3	GOL	C	370	6/6	0.72	0.18	37,45,47,49	0
3	GOL	D	370	6/6	0.77	0.17	38,47,50,53	0
3	GOL	A	370	6/6	0.87	0.14	54,57,58,59	0
3	GOL	A	371	6/6	0.88	0.10	35,41,42,44	0
3	GOL	B	369	6/6	0.90	0.13	33,38,42,45	0
3	GOL	D	369	6/6	0.91	0.11	35,39,40,42	0
3	GOL	A	369	6/6	0.91	0.10	35,38,39,40	0
3	GOL	C	369	6/6	0.92	0.11	37,39,40,40	0
2	ACO	D	1904	51/51	0.95	0.08	23,31,39,42	0
2	ACO	A	1901	51/51	0.95	0.09	17,26,52,54	0
2	ACO	C	1903	51/51	0.95	0.08	20,32,44,47	0
2	ACO	B	1902	51/51	0.96	0.09	17,29,46,49	0

The following is a graphical depiction of the model fit to experimental electron density of all instances of the Ligand of Interest. In addition, ligands with molecular weight > 250 and outliers as shown on the geometry validation Tables will also be included. Each fit is shown from different orientation to approximate a three-dimensional view.

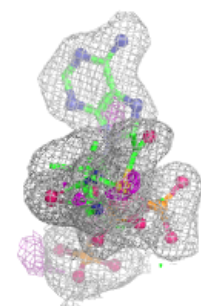
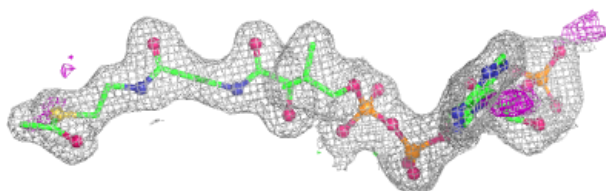
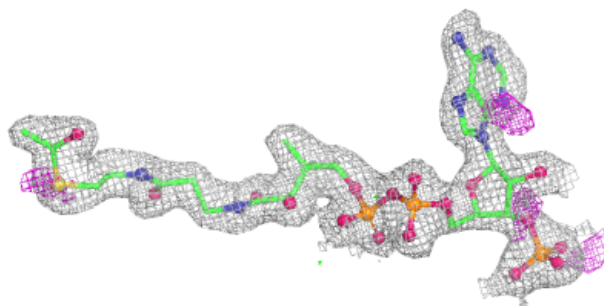


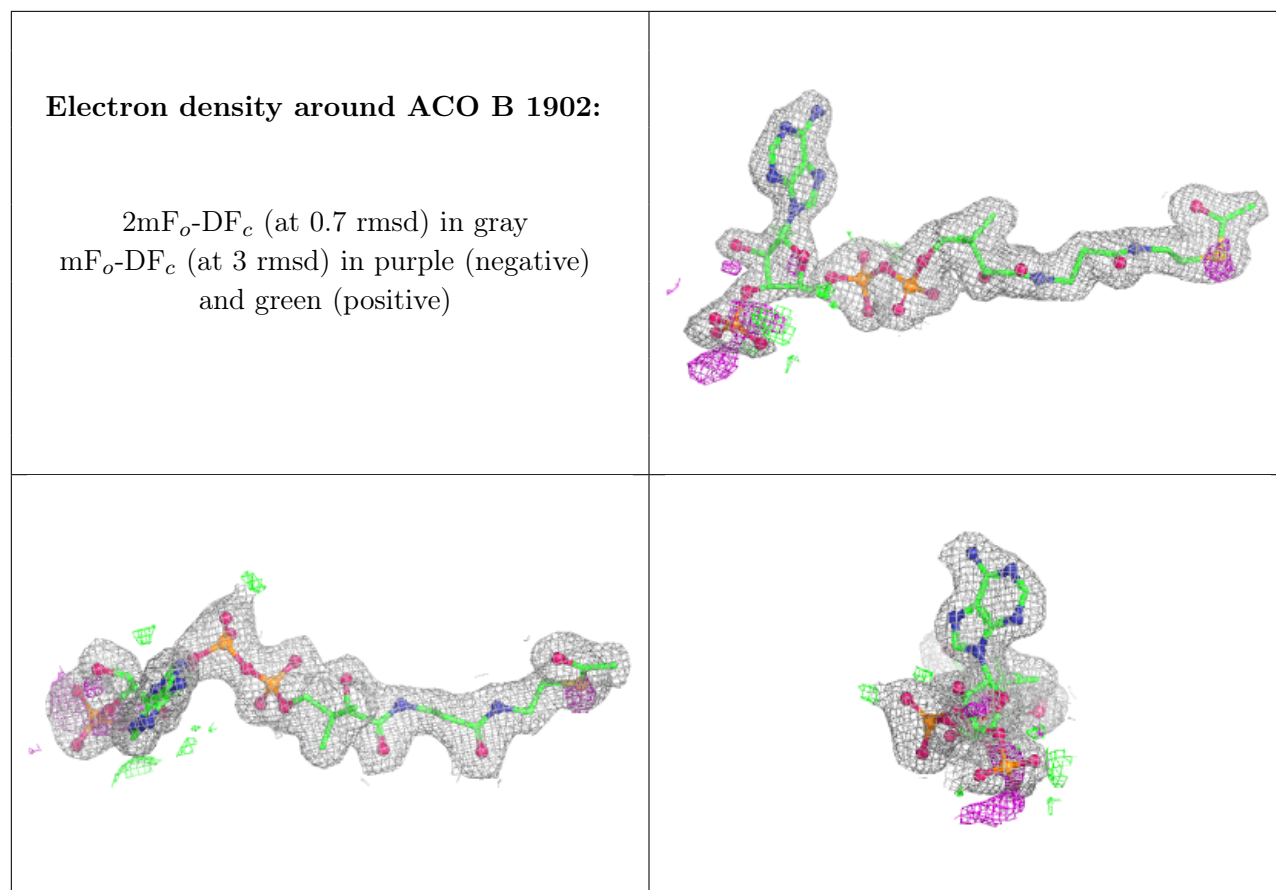
Electron density around ACO A 1901:

$2mF_o-DF_c$ (at 0.7 rmsd) in gray
 mF_o-DF_c (at 3 rmsd) in purple (negative)
and green (positive)

**Electron density around ACO C 1903:**

$2mF_o-DF_c$ (at 0.7 rmsd) in gray
 mF_o-DF_c (at 3 rmsd) in purple (negative)
and green (positive)





6.5 Other polymers [i](#)

There are no such residues in this entry.