



wwPDB NMR Structure Validation Summary Report ⓘ

Apr 15, 2026 – 11:02 AM UTC

PDB ID : 2MND / pdb_00002mnd
BMRB ID : 19888
Title : Recognition complex of DNA d(CGACGCGTCG)2 with thiazotropsin B
Authors : Alniss, H.Y.; Salvia, M.-V.; Sadikov, M.; Golovchenko, I.; Anthony, N.G.;
Khalaf, A.I.; Mackay, S.P.; Suckling, C.J.; Parkinson, J.A.
Deposited on : 2014-04-03

This is a wwPDB NMR Structure Validation Summary Report for a publicly released PDB entry.

We welcome your comments at validation@mail.wwpdb.org

A user guide is available at

<https://www.wwpdb.org/validation/2017/NMRValidationReportHelp>

with specific help available everywhere you see the ⓘ symbol.

The types of validation reports are described at

<http://www.wwpdb.org/validation/2017/FAQs#types>.

The following versions of software and data (see [references ⓘ](#)) were used in the production of this report:

MolProbity : **FAILED**
Mogul : 2022.3.0, CSD as543be (2022)
Buster-report : wwPDB partial adaption of 1.1.7 (2018)
Percentile statistics : 20250101.v01 (using entries in the PDB archive January 1st 2025)
wwPDB-RCI : v_1n_11_5_13_A (Berjanski et al., 2005)
PANAV : Wang et al. (2010)
wwPDB-ShiftChecker : v1.2
Ideal geometry (proteins) : Engh & Huber (2001)
Ideal geometry (DNA, RNA) : Parkinson et al. (1996)
Validation Pipeline (wwPDB-VP) : 2.49

1 Overall quality at a glance

The following experimental techniques were used to determine the structure:

SOLUTION NMR

The overall completeness of chemical shifts assignment is 20%.

There are no overall percentile quality scores available for this entry.

The sequence quality summary graphics cannot be shown.

2 Ensemble composition and analysis

This entry contains 1 models. Identification of well-defined residues and clustering analysis are not possible.

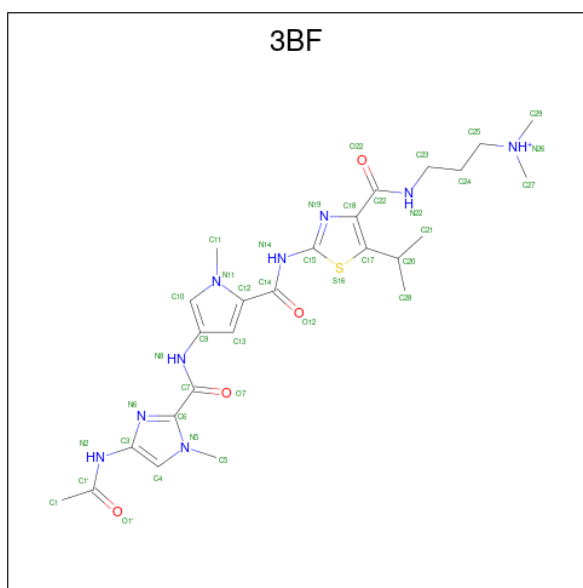
3 Entry composition [i](#)

There are 2 unique types of molecules in this entry. The entry contains 780 atoms, of which 298 are hydrogens and 0 are deuteriums.

- Molecule 1 is a DNA chain called 5'-D>(*CP*GP*AP*CP*GP*CP*GP*TP*CP*G)-3'.

Mol	Chain	Residues	Atoms					Trace	
			Total	C	H	N	O		P
1	A	10	315	96	113	39	58	9	0
1	B	10	315	96	113	39	58	9	0

- Molecule 2 is thiazotropsin B (CCD ID: 3BF) (formula: C₂₅H₃₆N₉O₄S).




Mol	Chain	Residues	Atoms					
			Total	C	H	N	O	S
2	A	1	75	25	36	9	4	1
2	B	1	75	25	36	9	4	1

4 Residue-property plots


These plots are provided for all protein, RNA, DNA and oligosaccharide chains in the entry. The first graphic is the same as shown in the summary in section 1 of this report. The second graphic shows the sequence where residues are colour-coded according to the number of geometric quality criteria for which they contain at least one outlier: green = 0, yellow = 1, orange = 2 and red = 3 or more. Stretches of 2 or more consecutive residues without any outliers are shown as green connectors. Residues which are classified as ill-defined in the NMR ensemble, are shown in cyan with an underline colour-coded according to the previous scheme. Residues which were present in the experimental sample, but not modelled in the final structure are shown in grey.

- Molecule 1: 5'-D(*CP*GP*AP*CP*GP*CP*GP*TP*CP*G)-3'

Chain A:  90% 10%



- Molecule 1: 5'-D(*CP*GP*AP*CP*GP*CP*GP*TP*CP*G)-3'

Chain B:  80% 20%



5 Refinement protocol and experimental data overview

The models were refined using the following method: *molecular dynamics*.

Of the 1 calculated structures, 1 were deposited, based on the following criterion: *structures with the least restraint violations*.

The following table shows the software used for structure solution, optimisation and refinement.

Software name	Classification	Version
SYBYL	geometry optimization	
Amber	geometry optimization	
Amber	refinement	
Amber	structure solution	
MARDIGRAS	structure solution	

The following table shows chemical shift validation statistics as aggregates over all chemical shift files. Detailed validation can be found in section 7 of this report.

Chemical shift file(s)	working_cs.cif
Number of chemical shift lists	1
Total number of shifts	82
Number of shifts mapped to atoms	82
Number of unparsed shifts	0
Number of shifts with mapping errors	0
Number of shifts with mapping warnings	0
Assignment completeness (well-defined parts)	20%

6 Model quality [i](#)

6.1 Standard geometry [i](#)

MolProbity failed to run properly - this section will have to be empty.

6.2 Too-close contacts [i](#)

MolProbity failed to run properly - this section will have to be empty.

6.3 Torsion angles [i](#)

6.3.1 Protein backbone [i](#)

MolProbity failed to run properly - this section will have to be empty.

6.3.2 Protein sidechains [i](#)

MolProbity failed to run properly - this section will have to be empty.

6.3.3 RNA [i](#)

MolProbity failed to run properly - this section will have to be empty.

6.4 Non-standard residues in protein, DNA, RNA chains [i](#)

MolProbity failed to run properly - this section will have to be empty.

6.5 Carbohydrates [i](#)

MolProbity failed to run properly - this section will have to be empty.

6.6 Ligand geometry [i](#)

MolProbity failed to run properly - this section will have to be empty.

6.7 Other polymers [i](#)

MolProbity failed to run properly - this section will have to be empty.

6.8 Polymer linkage issues

There are no chain breaks in this entry.

7 Chemical shift validation [i](#)

The completeness of assignment taking into account all chemical shift lists is 20% for the well-defined parts and 20% for the entire structure.

7.1 Chemical shift list 1

File name: working_cs.cif

Chemical shift list name: *assigned_chem_shift_list_1*

7.1.1 Bookkeeping [i](#)

The following table shows the results of parsing the chemical shift list and reports the number of nuclei with statistically unusual chemical shifts.

Total number of shifts	82
Number of shifts mapped to atoms	82
Number of unparsed shifts	0
Number of shifts with mapping errors	0
Number of shifts with mapping warnings	0
Number of shift outliers (ShiftChecker)	3

7.1.2 Chemical shift referencing [i](#)

No chemical shift referencing corrections were calculated (not enough data).

7.1.3 Completeness of resonance assignments [i](#)

The following table shows the completeness of the chemical shift assignments for the well-defined regions of the structure. The overall completeness is 20%, i.e. 79 atoms were assigned a chemical shift out of a possible 404. 0 out of 0 assigned methyl groups (LEU and VAL) were assigned stereospecifically.

	Total	¹ H	¹³ C	¹⁵ N
Sugar	50/240 (21%)	50/140 (36%)	0/100 (0%)	0/0 (—%)
Base	29/164 (18%)	29/104 (28%)	0/32 (0%)	0/28 (0%)
Overall	79/404 (20%)	79/244 (32%)	0/132 (0%)	0/28 (0%)

7.1.4 Statistically unusual chemical shifts [i](#)

The following table lists the statistically unusual chemical shifts. These are statistical measures, and large deviations from the mean do not necessarily imply incorrect assignments. Molecules con-

taining paramagnetic centres or hemes are expected to give rise to anomalous chemical shifts.

List Id	Chain	Res	Type	Atom	Shift, <i>ppm</i>	Expected range, <i>ppm</i>	Z-score
1	A	5	DG	H4'	2.25	3.37 – 5.35	-10.7
1	A	6	DC	H4'	2.21	2.84 – 5.45	-7.4
1	A	8	DT	H4'	2.26	2.69 – 5.59	-6.5

7.1.5 Random Coil Index (RCI) plots [i](#)

No *random coil index*(RCI) plot could be generated from the current chemical shift list. RCI is only applicable to proteins