



Full wwPDB X-ray Structure Validation Report ⓘ

Mar 4, 2026 – 08:18 PM UTC

PDB ID : 4MO4 / pdb_00004mo4
Title : Crystal structure of AnmK bound to AMPPCP
Authors : Bacik, J.P.; Mark, B.L.
Deposited on : 2013-09-11
Resolution : 1.67 Å(reported)

This is a Full wwPDB X-ray Structure Validation Report for a publicly released PDB entry.

We welcome your comments at validation@mail.wwpdb.org

A user guide is available at

<https://www.wwpdb.org/validation/2017/XrayValidationReportHelp>

with specific help available everywhere you see the ⓘ symbol.

The types of validation reports are described at

<http://www.wwpdb.org/validation/2017/FAQs#types>.

The following versions of software and data (see [references ⓘ](#)) were used in the production of this report:

MolProbity : 4-5-2 with Phenix2.0
Mogul : 2022.3.0, CSD as543be (2022)
Xtriage (Phenix) : 2.0
EDS : 3.0
Buster-report : wwPDB partial adaption of 1.1.7 (2018)
Percentile statistics : 20250101.v01 (using entries in the PDB archive January 1st 2025)
CCP4 : 9.0.010 (Gargrove)
Density-Fitness : 1.0.12
Ideal geometry (proteins) : Engh & Huber (2001)
Ideal geometry (DNA, RNA) : Parkinson et al. (1996)
Validation Pipeline (wwPDB-VP) : 2.49

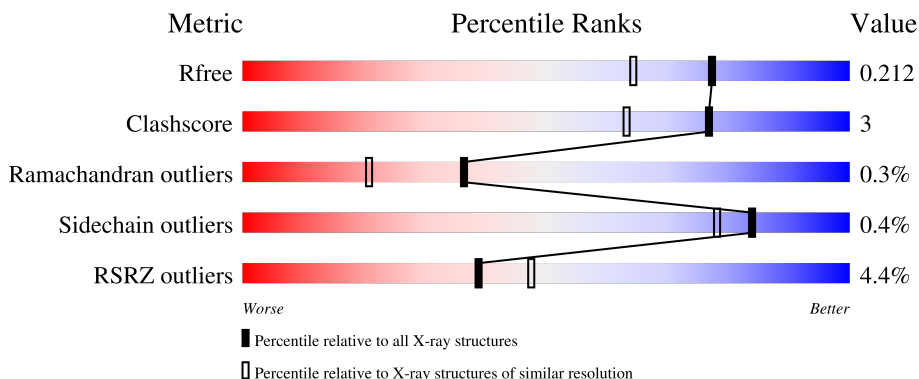
1 Overall quality at a glance

The following experimental techniques were used to determine the structure:

X-RAY DIFFRACTION

The reported resolution of this entry is 1.67 Å.

Percentile scores (ranging between 0-100) for global validation metrics of the entry are shown in the following graphic. The table shows the number of entries on which the scores are based.



Metric	Whole archive (#Entries)	Similar resolution (#Entries, resolution range(Å))
R_{free}	180053	1054 (1.68-1.68)
Clashscore	190562	1078 (1.68-1.68)
Ramachandran outliers	187476	1068 (1.68-1.68)
Sidechain outliers	187428	1067 (1.68-1.68)
RSRZ outliers	180081	1055 (1.68-1.68)

The table below summarises the geometric issues observed across the polymeric chains and their fit to the electron density. The red, orange, yellow and green segments of the lower bar indicate the fraction of residues that contain outliers for ≥ 3 , 2, 1 and 0 types of geometric quality criteria respectively. A grey segment represents the fraction of residues that are not modelled. The numeric value for each fraction is indicated below the corresponding segment, with a dot representing fractions $\leq 5\%$. The upper red bar (where present) indicates the fraction of residues that have poor fit to the electron density. The numeric value is given above the bar.

Mol	Chain	Length	Quality of chain
1	A	371	 6% 87% 6% 7%
1	B	371	 6% 85% 8% 6%
1	C	371	 2% 89% 5% 5%
1	D	371	 2% 88% 6% 5%

2 Entry composition i

There are 3 unique types of molecules in this entry. The entry contains 11707 atoms, of which 0 are hydrogens and 0 are deuteriums.

In the tables below, the ZeroOcc column contains the number of atoms modelled with zero occupancy, the AltConf column contains the number of residues with at least one atom in alternate conformation and the Trace column contains the number of residues modelled with at most 2 atoms.

- Molecule 1 is a protein called Anhydro-N-acetylmuramic acid kinase.

Mol	Chain	Residues	Atoms					ZeroOcc	AltConf	Trace
			Total	C	N	O	S			
1	A	345	2554	1614	454	471	15	0	0	0
1	B	348	2581	1633	460	473	15	0	0	0
1	C	354	2639	1668	471	485	15	0	0	0
1	D	353	2648	1674	473	486	15	0	1	0

There are 32 discrepancies between the modelled and reference sequences:

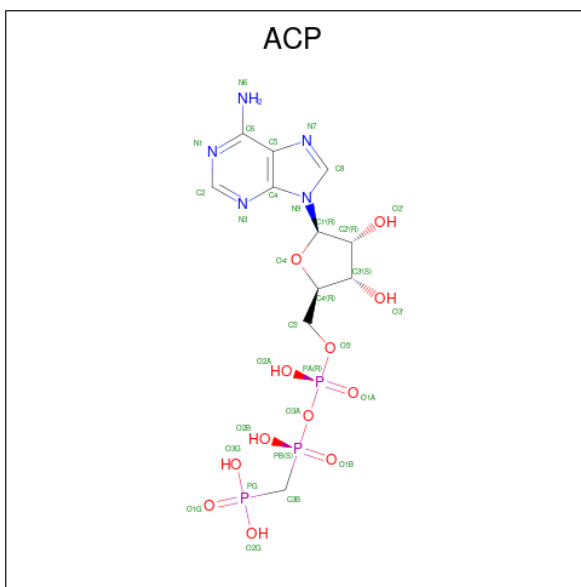
Chain	Residue	Modelled	Actual	Comment	Reference
A	364	GLY	-	expression tag	UNP Q9I5Q5
A	365	SER	-	expression tag	UNP Q9I5Q5
A	366	HIS	-	expression tag	UNP Q9I5Q5
A	367	HIS	-	expression tag	UNP Q9I5Q5
A	368	HIS	-	expression tag	UNP Q9I5Q5
A	369	HIS	-	expression tag	UNP Q9I5Q5
A	370	HIS	-	expression tag	UNP Q9I5Q5
A	371	HIS	-	expression tag	UNP Q9I5Q5
B	364	GLY	-	expression tag	UNP Q9I5Q5
B	365	SER	-	expression tag	UNP Q9I5Q5
B	366	HIS	-	expression tag	UNP Q9I5Q5
B	367	HIS	-	expression tag	UNP Q9I5Q5
B	368	HIS	-	expression tag	UNP Q9I5Q5
B	369	HIS	-	expression tag	UNP Q9I5Q5
B	370	HIS	-	expression tag	UNP Q9I5Q5
B	371	HIS	-	expression tag	UNP Q9I5Q5
C	364	GLY	-	expression tag	UNP Q9I5Q5
C	365	SER	-	expression tag	UNP Q9I5Q5
C	366	HIS	-	expression tag	UNP Q9I5Q5
C	367	HIS	-	expression tag	UNP Q9I5Q5
C	368	HIS	-	expression tag	UNP Q9I5Q5

Continued on next page...

Continued from previous page...

Chain	Residue	Modelled	Actual	Comment	Reference
C	369	HIS	-	expression tag	UNP Q9I5Q5
C	370	HIS	-	expression tag	UNP Q9I5Q5
C	371	HIS	-	expression tag	UNP Q9I5Q5
D	364	GLY	-	expression tag	UNP Q9I5Q5
D	365	SER	-	expression tag	UNP Q9I5Q5
D	366	HIS	-	expression tag	UNP Q9I5Q5
D	367	HIS	-	expression tag	UNP Q9I5Q5
D	368	HIS	-	expression tag	UNP Q9I5Q5
D	369	HIS	-	expression tag	UNP Q9I5Q5
D	370	HIS	-	expression tag	UNP Q9I5Q5
D	371	HIS	-	expression tag	UNP Q9I5Q5

- Molecule 2 is PHOSPHOMETHYLPHOSPHONIC ACID ADENYLATE ESTER (CCD ID: ACP) (formula: C₁₁H₁₈N₅O₁₂P₃).



Mol	Chain	Residues	Atoms					ZeroOcc	AltConf
			Total	C	N	O	P		
2	A	1	Total	C	N	O	P	0	0
			27	11	5	9	2		
2	B	1	Total	C	N	O	P	0	0
			31	11	5	12	3		
2	C	1	Total	C	N	O	P	0	0
			31	11	5	12	3		
2	D	1	Total	C	N	O	P	0	0
			31	11	5	12	3		

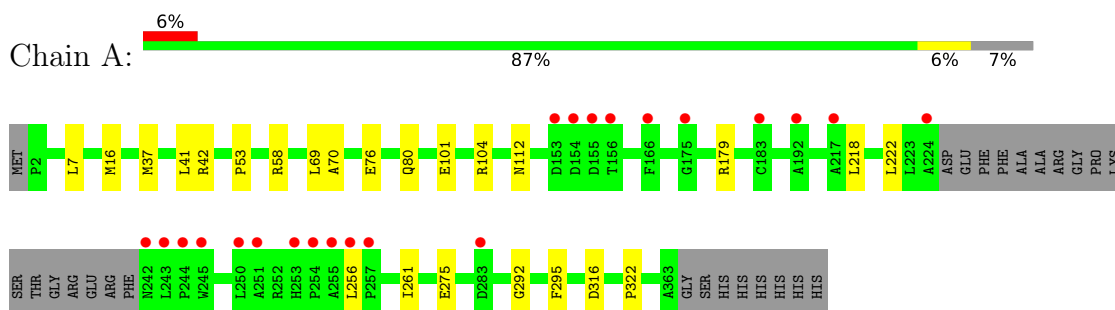
- Molecule 3 is water.

Mol	Chain	Residues	Atoms		ZeroOcc	AltConf
3	A	265	Total 265	O 265	0	0
3	B	190	Total 190	O 190	0	0
3	C	334	Total 334	O 334	0	0
3	D	376	Total 376	O 376	0	0

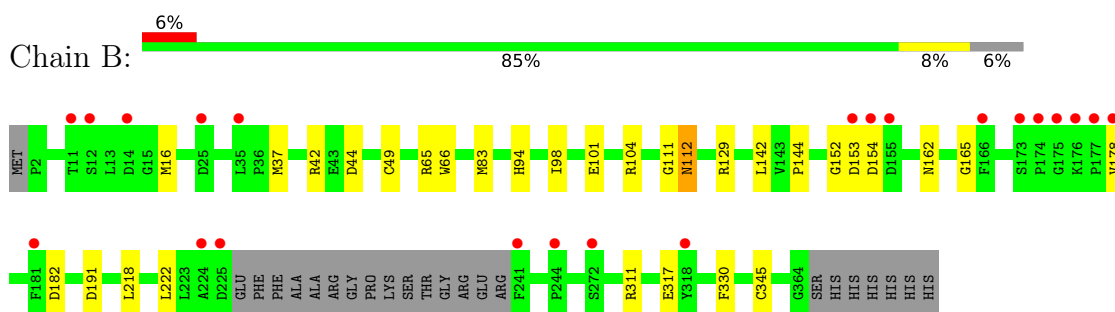
3 Residue-property plots [i](#)

These plots are drawn for all protein, RNA, DNA and oligosaccharide chains in the entry. The first graphic for a chain summarises the proportions of the various outlier classes displayed in the second graphic. The second graphic shows the sequence view annotated by issues in geometry and electron density. Residues are color-coded according to the number of geometric quality criteria for which they contain at least one outlier: green = 0, yellow = 1, orange = 2 and red = 3 or more. A red dot above a residue indicates a poor fit to the electron density ($RSRZ > 2$). Stretches of 2 or more consecutive residues without any outlier are shown as a green connector. Residues present in the sample, but not in the model, are shown in grey.

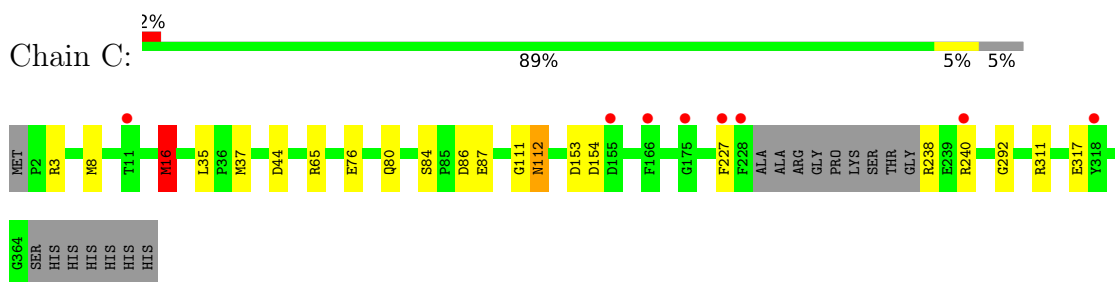
- Molecule 1: Anhydro-N-acetylmuramic acid kinase



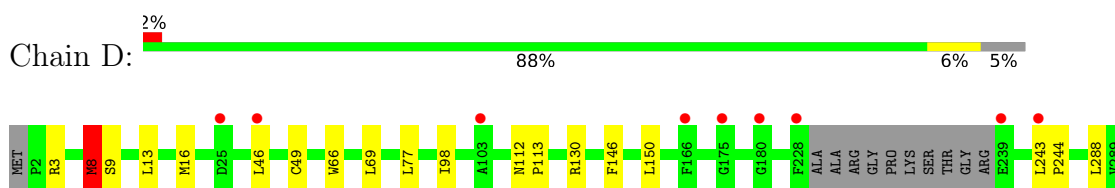
- Molecule 1: Anhydro-N-acetylmuramic acid kinase



- Molecule 1: Anhydro-N-acetylmuramic acid kinase



- Molecule 1: Anhydro-N-acetylmuramic acid kinase



C290	R311	E317	Y318	P322	Y361	G364	SER	HIS	HIS	HIS	HIS	HIS	HIS	HIS
------	------	------	------	------	------	------	-----	-----	-----	-----	-----	-----	-----	-----

4 Data and refinement statistics

Property	Value	Source
Space group	P 1	Depositor
Cell constants a, b, c, α , β , γ	59.66Å 70.82Å 91.21Å 106.50° 104.93° 98.26°	Depositor
Resolution (Å)	44.86 – 1.67 44.86 – 1.67	Depositor EDS
% Data completeness (in resolution range)	97.2 (44.86-1.67) 91.0 (44.86-1.67)	Depositor EDS
R_{merge}	0.05	Depositor
R_{sym}	0.06	Depositor
$\langle I/\sigma(I) \rangle$ ¹	1.68 (at 1.67Å)	Xtrriage
Refinement program	PHENIX (phenix.refine: 1.8.1_1168)	Depositor
R, R_{free}	0.177 , 0.213 (Not available) , 0.212	Depositor DCC
R_{free} test set	7768 reflections (4.98%)	wwPDB-VP
Wilson B-factor (Å ²)	19.7	Xtrriage
Anisotropy	0.244	Xtrriage
Bulk solvent k_{sol} (e/Å ³), B_{sol} (Å ²)	0.33 , 38.9	EDS
L-test for twinning ²	$\langle L \rangle = 0.49$, $\langle L^2 \rangle = 0.32$	Xtrriage
Estimated twinning fraction	No twinning to report.	Xtrriage
F_o, F_c correlation	0.96	EDS
Total number of atoms	11707	wwPDB-VP
Average B, all atoms (Å ²)	31.0	wwPDB-VP

Xtrriage's analysis on translational NCS is as follows: *The largest off-origin peak in the Patterson function is 5.45% of the height of the origin peak. No significant pseudotranslation is detected.*

¹Intensities estimated from amplitudes.

²Theoretical values of $\langle |L| \rangle$, $\langle L^2 \rangle$ for acentric reflections are 0.5, 0.333 respectively for untwinned datasets, and 0.375, 0.2 for perfectly twinned datasets.

5 Model quality [i](#)

5.1 Standard geometry [i](#)

Bond lengths and bond angles in the following residue types are not validated in this section: ACP

The Z score for a bond length (or angle) is the number of standard deviations the observed value is removed from the expected value. A bond length (or angle) with $|Z| > 5$ is considered an outlier worth inspection. RMSZ is the root-mean-square of all Z scores of the bond lengths (or angles).

Mol	Chain	Bond lengths		Bond angles	
		RMSZ	# Z >5	RMSZ	# Z >5
1	A	0.45	0/2614	0.77	0/3568
1	B	0.44	0/2641	0.76	2/3601 (0.1%)
1	C	0.47	1/2701 (0.0%)	0.77	0/3682
1	D	0.50	1/2714 (0.0%)	0.78	1/3698 (0.0%)
All	All	0.47	2/10670 (0.0%)	0.77	3/14549 (0.0%)

All (2) bond length outliers are listed below:

Mol	Chain	Res	Type	Atoms	Z	Observed(Å)	Ideal(Å)
1	D	8	MET	C-O	-5.27	1.17	1.23
1	C	16	MET	C-O	-5.11	1.17	1.24

All (3) bond angle outliers are listed below:

Mol	Chain	Res	Type	Atoms	Z	Observed(°)	Ideal(°)
1	D	130	ARG	N-CA-C	5.23	116.98	111.28
1	B	165	GLY	N-CA-C	-5.16	106.53	112.73
1	B	152	GLY	N-CA-C	-5.12	105.37	111.36

There are no chirality outliers.

There are no planarity outliers.

5.2 Too-close contacts [i](#)

In the following table, the Non-H and H(model) columns list the number of non-hydrogen atoms and hydrogen atoms in the chain respectively. The H(added) column lists the number of hydrogen atoms added and optimized by MolProbity. The Clashes column lists the number of clashes within the asymmetric unit, whereas Symm-Clashes lists symmetry-related clashes.

Mol	Chain	Non-H	H(model)	H(added)	Clashes	Symm-Clashes
1	A	2554	0	2483	13	0
1	B	2581	0	2520	17	0
1	C	2639	0	2561	17	0
1	D	2648	0	2579	14	0
2	A	27	0	12	1	0
2	B	31	0	14	1	0
2	C	31	0	14	1	0
2	D	31	0	14	0	0
3	A	265	0	0	2	0
3	B	190	0	0	2	0
3	C	334	0	0	0	0
3	D	376	0	0	1	0
All	All	11707	0	10197	61	0

The all-atom clashscore is defined as the number of clashes found per 1000 atoms (including hydrogen atoms). The all-atom clashscore for this structure is 3.

All (61) close contacts within the same asymmetric unit are listed below, sorted by their clash magnitude.

Atom-1	Atom-2	Interatomic distance (Å)	Clash overlap (Å)
1:C:240:ARG:HH11	1:C:240:ARG:HG3	1.43	0.80
1:A:53:PRO:O	1:A:58:ARG:NH1	2.20	0.73
1:B:311:ARG:NH1	1:B:317:GLU:OE1	2.26	0.69
1:D:311:ARG:NH2	1:D:317:GLU:OE1	2.27	0.67
1:C:240:ARG:HG3	1:C:240:ARG:NH1	2.10	0.65
1:D:288:LEU:HD22	1:D:318:TYR:CZ	2.33	0.64
1:B:44:ASP:OD2	1:B:65:ARG:NH2	2.30	0.62
1:C:44:ASP:OD2	1:C:65:ARG:NH2	2.27	0.59
1:B:37:MET:O	1:B:42:ARG:NH2	2.38	0.56
1:D:16:MET:HE3	1:D:69:LEU:HD23	1.87	0.56
1:D:16:MET:HE2	1:D:66:TRP:CE2	2.42	0.55
1:A:256:LEU:HB2	1:A:261:ILE:HD11	1.89	0.54
1:C:227:PHE:HB2	1:C:240:ARG:HD3	1.89	0.53
1:A:16:MET:HE3	1:A:69:LEU:HD23	1.91	0.53
1:C:3:ARG:NH2	1:C:87:GLU:OE1	2.42	0.51
1:B:101:GLU:OE1	1:B:104:ARG:HD3	2.10	0.51
1:C:238:ARG:C	1:C:240:ARG:H	2.17	0.51
1:B:178:VAL:HB	1:B:345:CYS:SG	2.53	0.49
1:D:8:MET:HE3	1:D:8:MET:HA	1.94	0.49
1:A:295:PHE:CZ	1:A:322:PRO:HG2	2.49	0.48
1:C:84:SER:OG	1:C:86:ASP:OD1	2.22	0.48
1:A:292:GLY:HA3	2:A:500:ACP:O4'	2.14	0.47

Continued on next page...

Continued from previous page...

Atom-1	Atom-2	Interatomic distance (Å)	Clash overlap (Å)
1:B:153:ASP:OD1	1:B:154:ASP:N	2.48	0.46
1:B:94:HIS:HD2	1:B:330:PHE:CZ	2.33	0.46
1:C:153:ASP:OD1	1:C:154:ASP:N	2.49	0.46
1:B:16:MET:HE2	1:B:66:TRP:CE2	2.51	0.46
1:C:292:GLY:HA3	2:C:500:ACP:O4'	2.15	0.46
1:C:311:ARG:NH2	1:C:317:GLU:OE1	2.42	0.46
1:C:76:GLU:O	1:C:80:GLN:HG3	2.16	0.45
1:B:162:ASN:ND2	3:B:645:HOH:O	2.49	0.44
1:C:16:MET:HB2	1:C:16:MET:HE2	1.71	0.44
1:A:37:MET:O	1:A:42:ARG:NH2	2.51	0.44
1:B:83:MET:HE3	1:B:83:MET:HB2	1.87	0.44
1:A:101:GLU:OE1	1:A:104:ARG:HD3	2.18	0.44
1:D:8:MET:HE2	1:D:9:SER:H	1.82	0.43
1:D:290:CYS:HA	1:D:322:PRO:HB3	2.00	0.43
1:C:240:ARG:NH1	1:C:240:ARG:CG	2.78	0.43
1:B:49:CYS:HA	1:B:98:ILE:O	2.18	0.43
1:D:13:LEU:HD12	1:D:46:LEU:HG	2.01	0.43
1:B:218:LEU:O	1:B:222:LEU:HG	2.19	0.43
1:C:35:LEU:HD12	1:C:35:LEU:HA	1.90	0.42
1:B:144:PRO:HG3	3:B:770:HOH:O	2.19	0.42
1:C:8:MET:HE3	1:C:8:MET:HA	2.01	0.42
1:A:179:ARG:NH1	3:A:841:HOH:O	2.51	0.42
1:B:37:MET:HE3	1:B:37:MET:HB2	1.82	0.42
1:D:77:LEU:C	1:D:77:LEU:HD23	2.45	0.42
1:B:129:ARG:HG2	1:B:142:LEU:HD11	2.02	0.41
1:A:7:LEU:HD21	1:A:70:ALA:HB1	2.02	0.41
1:C:111:GLY:O	1:C:112:ASN:C	2.64	0.41
1:D:113:PRO:HB2	1:D:361:TYR:CD2	2.56	0.41
1:A:37:MET:HG3	1:A:41:LEU:HD23	2.01	0.41
1:B:111:GLY:O	1:B:112:ASN:C	2.64	0.41
1:B:191:ASP:OD2	2:B:500:ACP:O3'	2.37	0.41
1:D:3:ARG:HD2	3:D:914:HOH:O	2.20	0.41
1:D:49:CYS:HA	1:D:98:ILE:O	2.20	0.41
1:A:275:GLU:OE1	3:A:845:HOH:O	2.22	0.41
1:A:76:GLU:O	1:A:80:GLN:HG3	2.21	0.41
1:D:243:LEU:HB3	1:D:244:PRO:HD3	2.03	0.41
1:D:146:PHE:CZ	1:D:150:LEU:HD11	2.56	0.41
1:A:218:LEU:O	1:A:222:LEU:HG	2.21	0.40
1:C:37:MET:HE3	1:C:37:MET:HB2	1.98	0.40

There are no symmetry-related clashes.

5.3 Torsion angles [i](#)

5.3.1 Protein backbone [i](#)

In the following table, the Percentiles column shows the percent Ramachandran outliers of the chain as a percentile score with respect to all X-ray entries followed by that with respect to entries of similar resolution.

The Analysed column shows the number of residues for which the backbone conformation was analysed, and the total number of residues.

Mol	Chain	Analysed	Favoured	Allowed	Outliers	Percentiles	
1	A	341/371 (92%)	337 (99%)	3 (1%)	1 (0%)	36	21
1	B	344/371 (93%)	340 (99%)	3 (1%)	1 (0%)	36	21
1	C	350/371 (94%)	344 (98%)	5 (1%)	1 (0%)	36	21
1	D	350/371 (94%)	345 (99%)	4 (1%)	1 (0%)	36	21
All	All	1385/1484 (93%)	1366 (99%)	15 (1%)	4 (0%)	36	21

All (4) Ramachandran outliers are listed below:

Mol	Chain	Res	Type
1	A	112	ASN
1	B	112	ASN
1	D	112	ASN
1	C	112	ASN

5.3.2 Protein sidechains [i](#)

In the following table, the Percentiles column shows the percent sidechain outliers of the chain as a percentile score with respect to all X-ray entries followed by that with respect to entries of similar resolution.

The Analysed column shows the number of residues for which the sidechain conformation was analysed, and the total number of residues.

Mol	Chain	Analysed	Rotameric	Outliers	Percentiles	
1	A	255/287 (89%)	254 (100%)	1 (0%)	84	78
1	B	257/287 (90%)	256 (100%)	1 (0%)	84	78
1	C	263/287 (92%)	262 (100%)	1 (0%)	84	78
1	D	266/287 (93%)	265 (100%)	1 (0%)	84	78
All	All	1041/1148 (91%)	1037 (100%)	4 (0%)	84	78

All (4) residues with a non-rotameric sidechain are listed below:

Mol	Chain	Res	Type
1	A	316	ASP
1	B	182	ASP
1	C	16	MET
1	D	8	MET

Sometimes sidechains can be flipped to improve hydrogen bonding and reduce clashes. All (12) such sidechains are listed below:

Mol	Chain	Res	Type
1	B	23	GLN
1	B	80	GLN
1	B	105	HIS
1	B	162	ASN
1	B	168	ASN
1	B	196	HIS
1	B	249	HIS
1	C	195	HIS
1	D	23	GLN
1	D	105	HIS
1	D	162	ASN
1	D	168	ASN

5.3.3 RNA [i](#)

There are no RNA molecules in this entry.

5.4 Non-standard residues in protein, DNA, RNA chains [i](#)

There are no non-standard protein/DNA/RNA residues in this entry.

5.5 Carbohydrates [i](#)

There are no oligosaccharides in this entry.

5.6 Ligand geometry [i](#)

4 ligands are modelled in this entry.

In the following table, the Counts columns list the number of bonds (or angles) for which Mogul statistics could be retrieved, the number of bonds (or angles) that are observed in the model and

the number of bonds (or angles) that are defined in the Chemical Component Dictionary. The Link column lists molecule types, if any, to which the group is linked. The Z score for a bond length (or angle) is the number of standard deviations the observed value is removed from the expected value. A bond length (or angle) with $|Z| > 2$ is considered an outlier worth inspection. RMSZ is the root-mean-square of all Z scores of the bond lengths (or angles).

Mol	Type	Chain	Res	Link	Bond lengths			Bond angles		
					Counts	RMSZ	# Z > 2	Counts	RMSZ	# Z > 2
2	ACP	A	500	-	29,29,33	0.49	0	41,45,52	0.56	0
2	ACP	D	500	-	31,33,33	0.42	0	47,52,52	0.73	2 (4%)
2	ACP	B	500	-	31,33,33	0.69	1 (3%)	47,52,52	0.67	0
2	ACP	C	500	-	31,33,33	0.46	0	47,52,52	0.78	2 (4%)

In the following table, the Chirals column lists the number of chiral outliers, the number of chiral centers analysed, the number of these observed in the model and the number defined in the Chemical Component Dictionary. Similar counts are reported in the Torsion and Rings columns. '-' means no outliers of that kind were identified.

Mol	Type	Chain	Res	Link	Chirals	Torsions	Rings
2	ACP	A	500	-	-	1/13/32/38	0/3/3/3
2	ACP	D	500	-	-	3/19/38/38	0/3/3/3
2	ACP	B	500	-	-	4/19/38/38	0/3/3/3
2	ACP	C	500	-	-	3/19/38/38	0/3/3/3

All (1) bond length outliers are listed below:

Mol	Chain	Res	Type	Atoms	Z	Observed(Å)	Ideal(Å)
2	B	500	ACP	PA-O3A	-3.70	1.55	1.59

All (4) bond angle outliers are listed below:

Mol	Chain	Res	Type	Atoms	Z	Observed(°)	Ideal(°)
2	C	500	ACP	O3A-PA-O1A	2.48	118.17	110.70
2	C	500	ACP	O2A-PA-O3A	-2.35	100.93	107.27
2	D	500	ACP	O3A-PA-O1A	2.25	117.48	110.70
2	D	500	ACP	PB-O3A-PA	2.10	139.23	132.37

There are no chirality outliers.

All (11) torsion outliers are listed below:

Mol	Chain	Res	Type	Atoms
2	B	500	ACP	PB-C3B-PG-O1G

Continued on next page...

Continued from previous page...

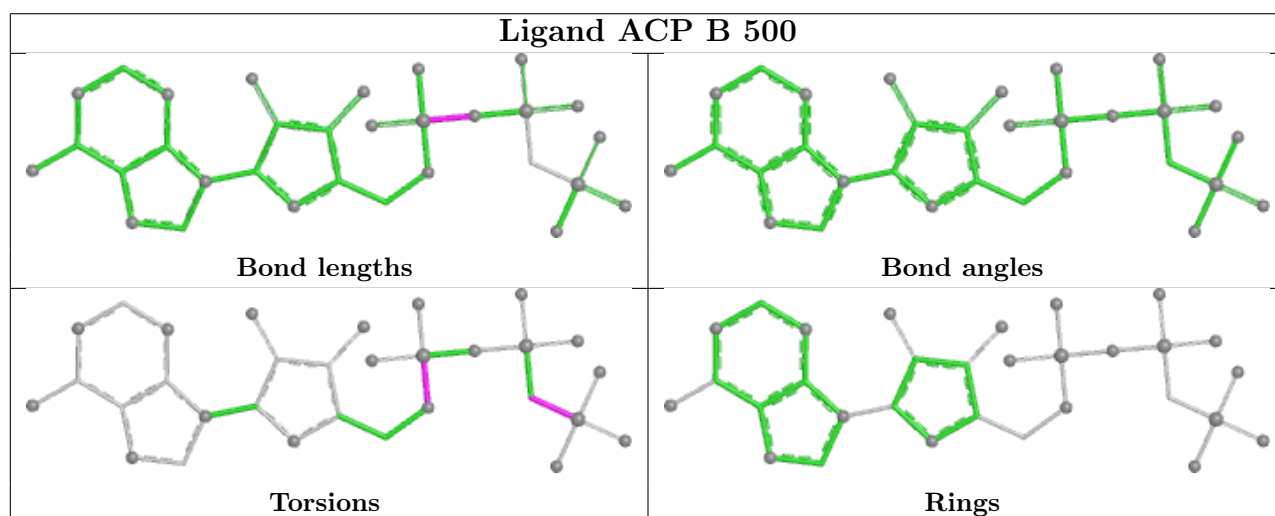
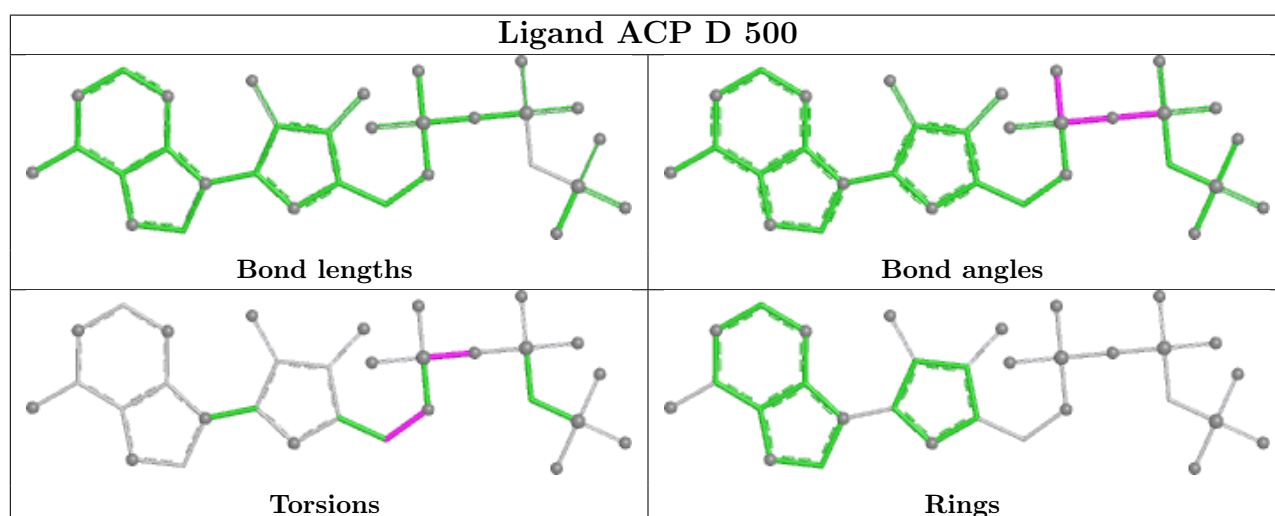
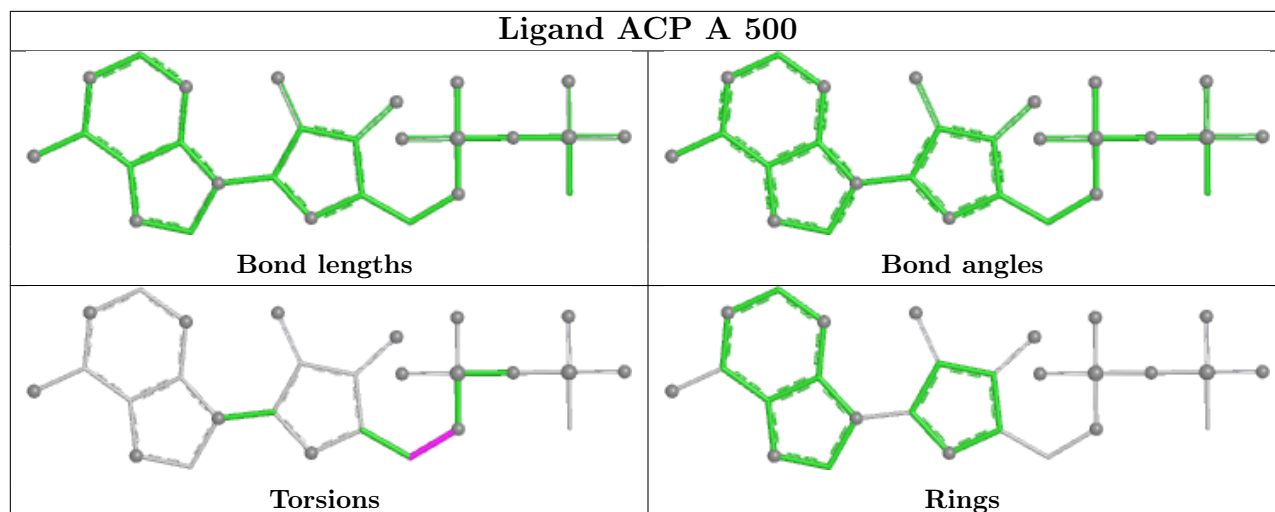
Mol	Chain	Res	Type	Atoms
2	B	500	ACP	PB-C3B-PG-O3G
2	C	500	ACP	PG-C3B-PB-O1B
2	C	500	ACP	PG-C3B-PB-O3A
2	D	500	ACP	PB-O3A-PA-O1A
2	B	500	ACP	PB-C3B-PG-O2G
2	B	500	ACP	C5'-O5'-PA-O1A
2	D	500	ACP	C4'-C5'-O5'-PA
2	C	500	ACP	C4'-C5'-O5'-PA
2	A	500	ACP	C4'-C5'-O5'-PA
2	D	500	ACP	PB-O3A-PA-O2A

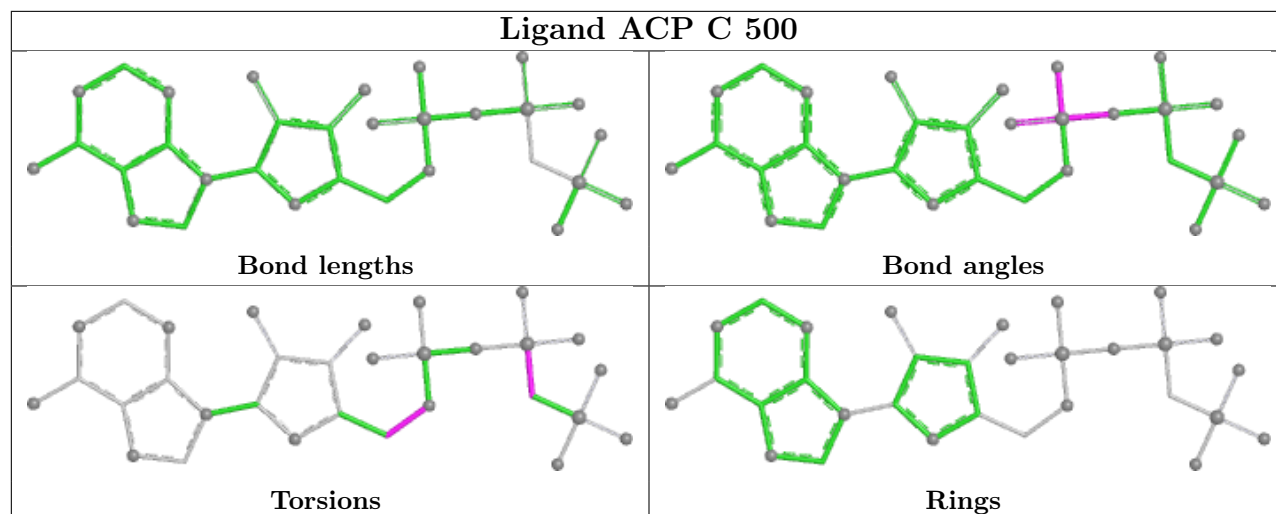
There are no ring outliers.

3 monomers are involved in 3 short contacts:

Mol	Chain	Res	Type	Clashes	Symm-Clashes
2	A	500	ACP	1	0
2	B	500	ACP	1	0
2	C	500	ACP	1	0

The following is a two-dimensional graphical depiction of Mogul quality analysis of bond lengths, bond angles, torsion angles, and ring geometry for all instances of the Ligand of Interest. In addition, ligands with molecular weight > 250 and outliers as shown on the validation Tables will also be included. For torsion angles, if less than 5% of the Mogul distribution of torsion angles is within 10 degrees of the torsion angle in question, then that torsion angle is considered an outlier. Any bond that is central to one or more torsion angles identified as an outlier by Mogul will be highlighted in the graph. For rings, the root-mean-square deviation (RMSD) between the ring in question and similar rings identified by Mogul is calculated over all ring torsion angles. If the average RMSD is greater than 60 degrees and the minimal RMSD between the ring in question and any Mogul-identified rings is also greater than 60 degrees, then that ring is considered an outlier. The outliers are highlighted in purple. The color gray indicates Mogul did not find sufficient equivalents in the CSD to analyse the geometry.





5.7 Other polymers [i](#)

There are no such residues in this entry.

5.8 Polymer linkage issues [i](#)

There are no chain breaks in this entry.

6 Fit of model and data

6.1 Protein, DNA and RNA chains

In the following table, the column labelled ‘#RSRZ > 2’ contains the number (and percentage) of RSRZ outliers, followed by percent RSRZ outliers for the chain as percentile scores relative to all X-ray entries and entries of similar resolution. The OWAB column contains the minimum, median, 95th percentile and maximum values of the occupancy-weighted average B-factor per residue. The column labelled ‘Q < 0.9’ lists the number of (and percentage) of residues with an average occupancy less than 0.9.

Mol	Chain	Analysed	<RSRZ>	#RSRZ>2	OWAB(Å ²)	Q<0.9
1	A	345/371 (92%)	0.42	22 (6%) 25 32	17, 33, 63, 84	0
1	B	348/371 (93%)	0.49	22 (6%) 26 33	18, 33, 58, 78	0
1	C	354/371 (95%)	0.01	8 (2%) 61 68	13, 25, 46, 68	0
1	D	353/371 (95%)	-0.12	9 (2%) 58 66	14, 23, 39, 57	1 (0%)
All	All	1400/1484 (94%)	0.20	61 (4%) 39 47	13, 28, 55, 84	1 (0%)

All (61) RSRZ outliers are listed below:

Mol	Chain	Res	Type	RSRZ
1	B	177	PRO	5.0
1	A	224	ALA	4.5
1	B	175	GLY	4.3
1	D	239	GLU	4.0
1	B	241	PHE	3.3
1	C	318	TYR	3.2
1	C	155	ASP	3.2
1	B	154	ASP	3.1
1	C	11	THR	3.1
1	B	224	ALA	2.9
1	B	25	ASP	2.8
1	A	245	TRP	2.7
1	A	154	ASP	2.7
1	A	254	PRO	2.7
1	C	227	PHE	2.7
1	D	243	LEU	2.7
1	A	153	ASP	2.7
1	B	155	ASP	2.7
1	B	173	SER	2.6
1	A	156	THR	2.6
1	A	251	ALA	2.6

Continued on next page...

Continued from previous page...

Mol	Chain	Res	Type	RSRZ
1	C	166	PHE	2.5
1	B	178	VAL	2.5
1	A	242	ASN	2.5
1	B	225	ASP	2.5
1	C	228	PHE	2.5
1	B	153	ASP	2.4
1	B	318	TYR	2.4
1	A	243	LEU	2.4
1	B	244	PRO	2.4
1	A	244	PRO	2.3
1	B	174	PRO	2.3
1	A	256	LEU	2.3
1	B	11	THR	2.3
1	D	46	LEU	2.3
1	B	181	PHE	2.3
1	A	175	GLY	2.3
1	A	183	CYS	2.3
1	B	12	SER	2.3
1	D	180	GLY	2.3
1	A	192	ALA	2.2
1	A	250	LEU	2.2
1	A	253	HIS	2.2
1	A	255	ALA	2.2
1	B	14	ASP	2.2
1	D	166	PHE	2.2
1	A	257	PRO	2.2
1	D	103	ALA	2.2
1	A	155	ASP	2.1
1	B	35	LEU	2.1
1	B	176	LYS	2.1
1	D	25	ASP	2.1
1	D	175	GLY	2.0
1	A	217	ALA	2.0
1	A	283	ASP	2.0
1	C	175	GLY	2.0
1	A	166	PHE	2.0
1	B	166	PHE	2.0
1	C	240	ARG	2.0
1	D	228	PHE	2.0
1	B	272	SER	2.0

6.2 Non-standard residues in protein, DNA, RNA chains [i](#)

There are no non-standard protein/DNA/RNA residues in this entry.

6.3 Carbohydrates [i](#)

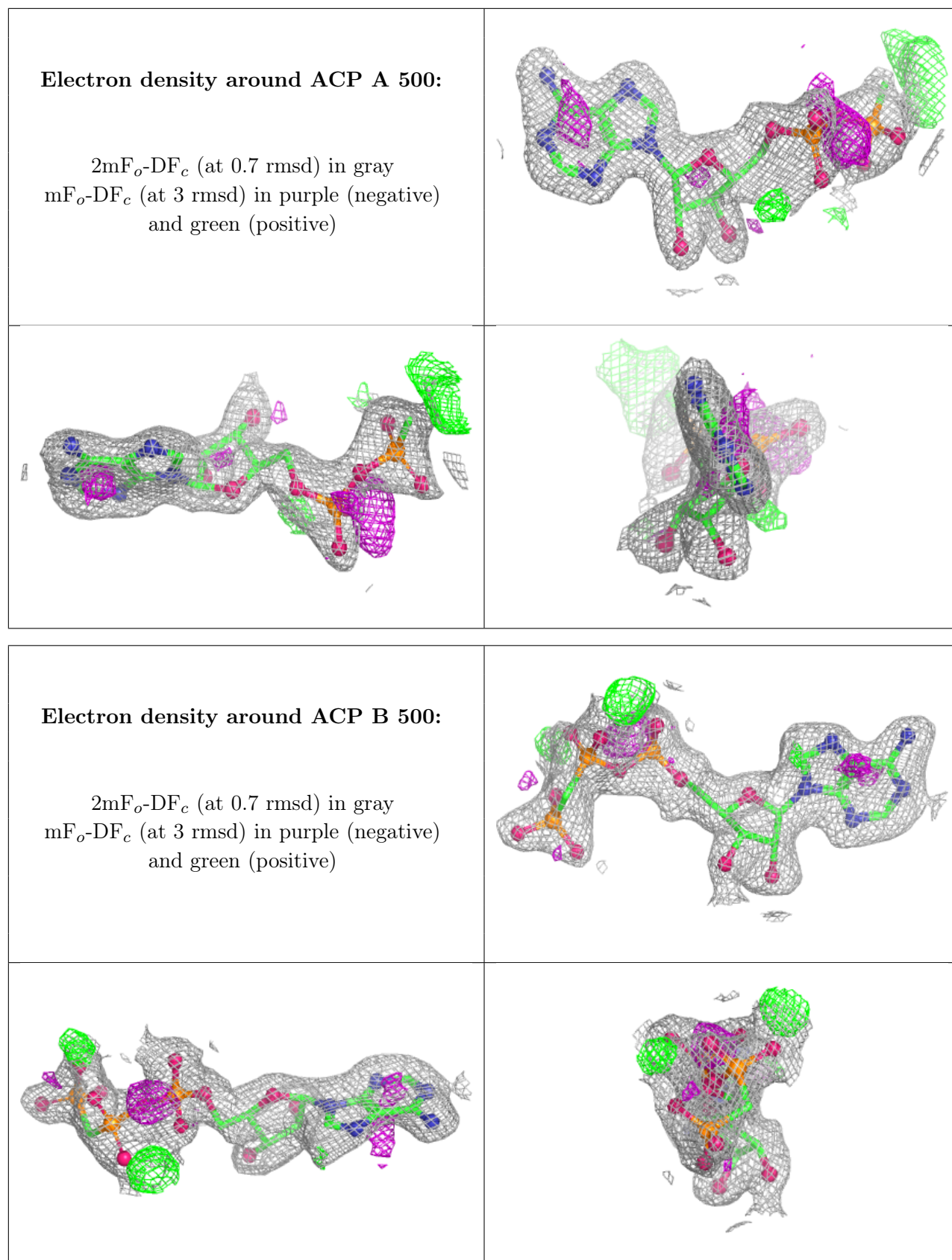
There are no oligosaccharides in this entry.

6.4 Ligands [i](#)

In the following table, the Atoms column lists the number of modelled atoms in the group and the number defined in the chemical component dictionary. The B-factors column lists the minimum, median, 95th percentile and maximum values of B factors of atoms in the group. The column labelled 'Q< 0.9' lists the number of atoms with occupancy less than 0.9.

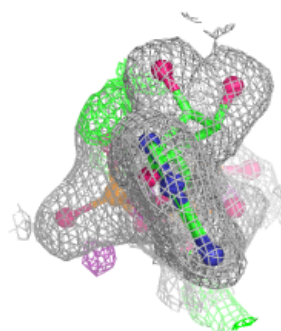
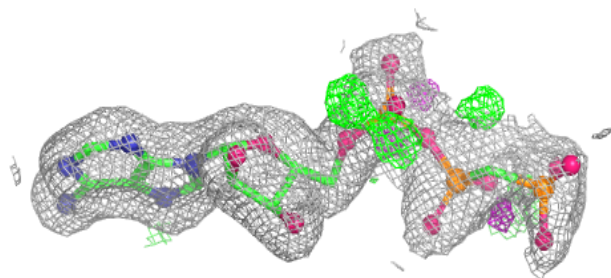
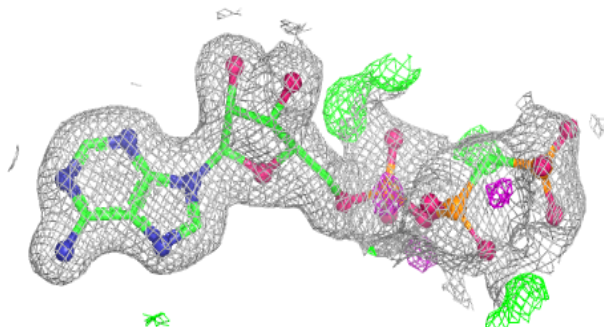
Mol	Type	Chain	Res	Atoms	RSCC	RSR	B-factors(Å ²)	Q<0.9
2	ACP	A	500	27/31	0.77	0.13	30,47,90,93	0
2	ACP	B	500	31/31	0.82	0.12	36,48,85,89	0
2	ACP	C	500	31/31	0.90	0.10	24,32,112,113	0
2	ACP	D	500	31/31	0.90	0.10	19,28,95,96	0

The following is a graphical depiction of the model fit to experimental electron density of all instances of the Ligand of Interest. In addition, ligands with molecular weight > 250 and outliers as shown on the geometry validation Tables will also be included. Each fit is shown from different orientation to approximate a three-dimensional view.

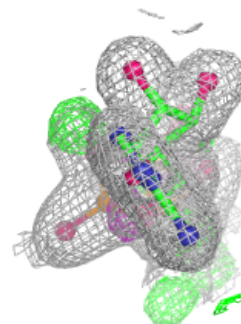
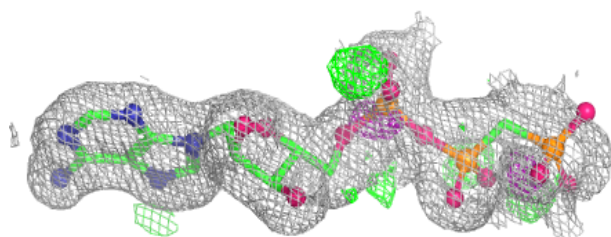
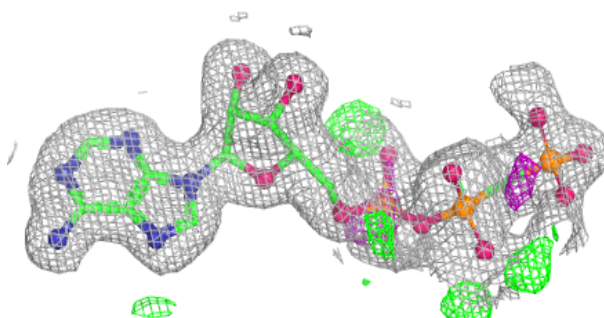


Electron density around ACP C 500:

$2mF_o-DF_c$ (at 0.7 rmsd) in gray
 mF_o-DF_c (at 3 rmsd) in purple (negative)
and green (positive)

**Electron density around ACP D 500:**

$2mF_o-DF_c$ (at 0.7 rmsd) in gray
 mF_o-DF_c (at 3 rmsd) in purple (negative)
and green (positive)



6.5 Other polymers [i](#)

There are no such residues in this entry.