



# Full wwPDB X-ray Structure Validation Report ⓘ

Mar 8, 2026 – 01:46 AM UTC

PDB ID : 4MOS / pdb\_00004mos  
Title : Pyranose 2-oxidase H450G/V546C double mutant with 2-fluorinated galactose  
Authors : Tan, T.C.; Spadiut, O.; Gandini, R.; Haltrich, D.; Divne, C.  
Deposited on : 2013-09-12  
Resolution : 1.80 Å(reported)

This is a Full wwPDB X-ray Structure Validation Report for a publicly released PDB entry.

We welcome your comments at [validation@mail.wwpdb.org](mailto:validation@mail.wwpdb.org)

A user guide is available at

<https://www.wwpdb.org/validation/2017/XrayValidationReportHelp>

with specific help available everywhere you see the ⓘ symbol.

The types of validation reports are described at

<http://www.wwpdb.org/validation/2017/FAQs#types>.

---

The following versions of software and data (see [references ⓘ](#)) were used in the production of this report:

MolProbity : 4-5-2 with Phenix2.0  
Mogul : 2022.3.0, CSD as543be (2022)  
Xtrriage (Phenix) : 2.0  
EDS : 3.0  
Buster-report : wwPDB partial adaption of 1.1.7 (2018)  
Percentile statistics : 20250101.v01 (using entries in the PDB archive January 1st 2025)  
CCP4 : 9.0.010 (Gargrove)  
Density-Fitness : 1.0.12  
Ideal geometry (proteins) : Engh & Huber (2001)  
Ideal geometry (DNA, RNA) : Parkinson et al. (1996)  
Validation Pipeline (wwPDB-VP) : 2.49

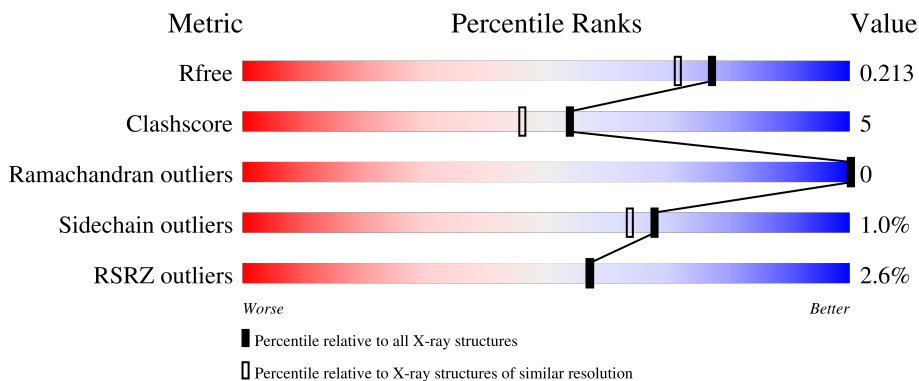
# 1 Overall quality at a glance

The following experimental techniques were used to determine the structure:

*X-RAY DIFFRACTION*

The reported resolution of this entry is 1.80 Å.

Percentile scores (ranging between 0-100) for global validation metrics of the entry are shown in the following graphic. The table shows the number of entries on which the scores are based.



Metric	Whole archive (#Entries)	Similar resolution (#Entries, resolution range(Å))
$R_{free}$	180053	7662 (1.80-1.80)
Clashscore	190562	8479 (1.80-1.80)
Ramachandran outliers	187476	8391 (1.80-1.80)
Sidechain outliers	187428	8390 (1.80-1.80)
RSRZ outliers	180081	7663 (1.80-1.80)

The table below summarises the geometric issues observed across the polymeric chains and their fit to the electron density. The red, orange, yellow and green segments of the lower bar indicate the fraction of residues that contain outliers for  $\geq 3$ , 2, 1 and 0 types of geometric quality criteria respectively. A grey segment represents the fraction of residues that are not modelled. The numeric value for each fraction is indicated below the corresponding segment, with a dot representing fractions  $\leq 5\%$ . The upper red bar (where present) indicates the fraction of residues that have poor fit to the electron density. The numeric value is given above the bar.

Mol	Chain	Length	Quality of chain
1	A	633	

## 2 Entry composition [i](#)

There are 6 unique types of molecules in this entry. The entry contains 5035 atoms, of which 0 are hydrogens and 0 are deuteriums.

In the tables below, the ZeroOcc column contains the number of atoms modelled with zero occupancy, the AltConf column contains the number of residues with at least one atom in alternate conformation and the Trace column contains the number of residues modelled with at most 2 atoms.

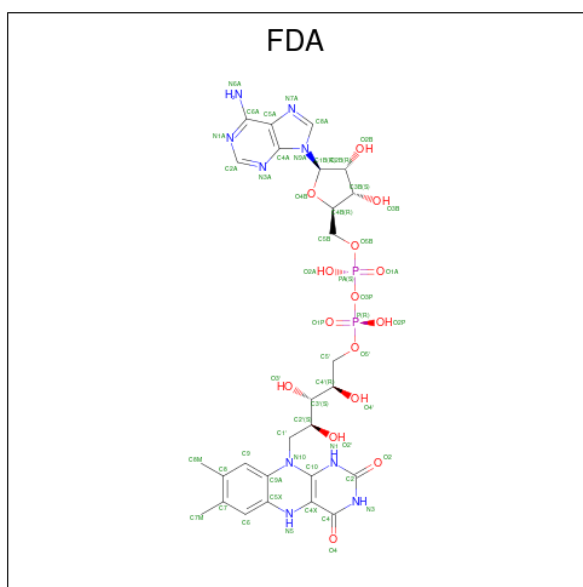
- Molecule 1 is a protein called Pyranose 2-oxidase.

Mol	Chain	Residues	Atoms					ZeroOcc	AltConf	Trace
			Total	C	N	O	S			
1	A	576	4541	2865	776	874	26	0	1	0

There are 14 discrepancies between the modelled and reference sequences:

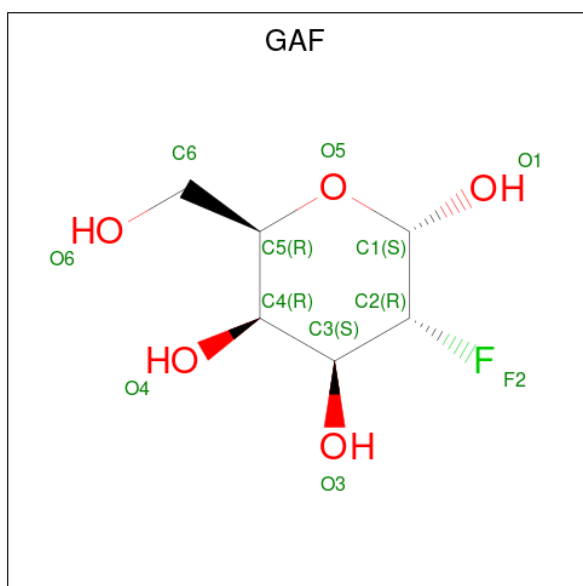
Chain	Residue	Modelled	Actual	Comment	Reference
A	2	ALA	SER	SEE REMARK 999	UNP Q7ZA32
A	450	GLY	HIS	engineered mutation	UNP Q7ZA32
A	546	CYS	VAL	engineered mutation	UNP Q7ZA32
A	623	ALA	-	expression tag	UNP Q7ZA32
A	624	ALA	-	expression tag	UNP Q7ZA32
A	625	ALA	-	expression tag	UNP Q7ZA32
A	626	LEU	-	expression tag	UNP Q7ZA32
A	627	GLU	-	expression tag	UNP Q7ZA32
A	628	HIS	-	expression tag	UNP Q7ZA32
A	629	HIS	-	expression tag	UNP Q7ZA32
A	630	HIS	-	expression tag	UNP Q7ZA32
A	631	HIS	-	expression tag	UNP Q7ZA32
A	632	HIS	-	expression tag	UNP Q7ZA32
A	633	HIS	-	expression tag	UNP Q7ZA32

- Molecule 2 is DIHYDROFLAVINE-ADENINE DINUCLEOTIDE (CCD ID: FDA) (formula:  $C_{27}H_{35}N_9O_{15}P_2$ ).



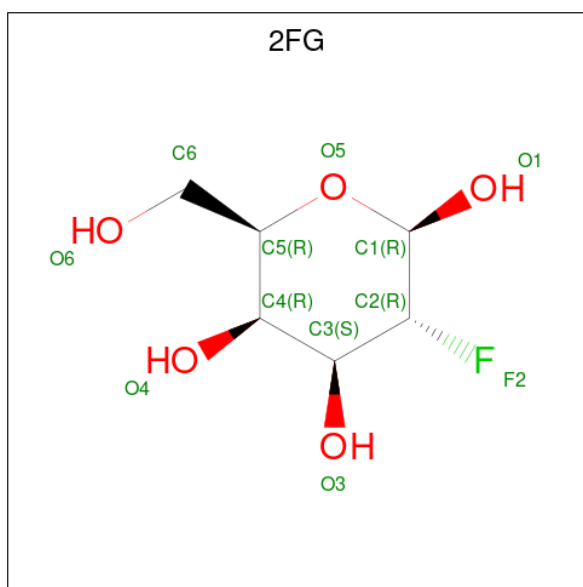
Mol	Chain	Residues	Atoms					ZeroOcc	AltConf
			Total	C	N	O	P		
2	A	1	53	27	9	15	2	0	0

- Molecule 3 is 2-deoxy-2-fluoro-alpha-D-galactopyranose (CCD ID: GAF) (formula:  $C_6H_{11}FO_5$ ).



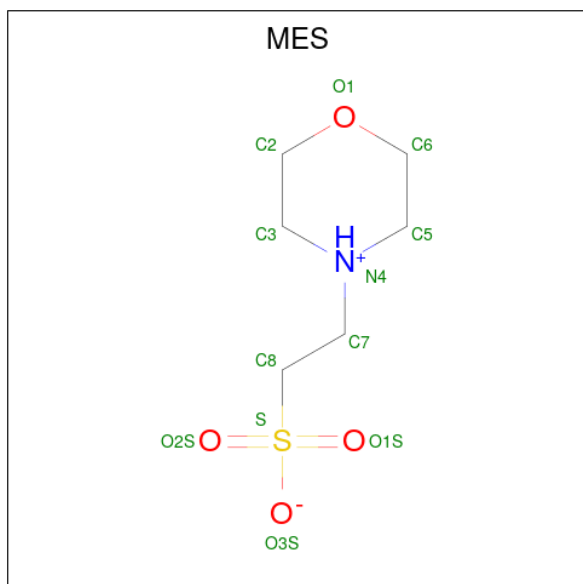
Mol	Chain	Residues	Atoms				ZeroOcc	AltConf
			Total	C	F	O		
3	A	1	12	6	1	5	0	0

- Molecule 4 is 2-deoxy-2-fluoro-beta-D-galactopyranose (CCD ID: 2FG) (formula:  $C_6H_{11}FO_5$ ).



Mol	Chain	Residues	Atoms				ZeroOcc	AltConf
			Total	C	F	O		
4	A	1	12	6	1	5	0	0

- Molecule 5 is 2-(N-MORPHOLINO)-ETHANESULFONIC ACID (CCD ID: MES) (formula:  $C_6H_{13}NO_4S$ ).



Mol	Chain	Residues	Atoms					ZeroOcc	AltConf
			Total	C	N	O	S		
5	A	1	12	6	1	4	1	0	0

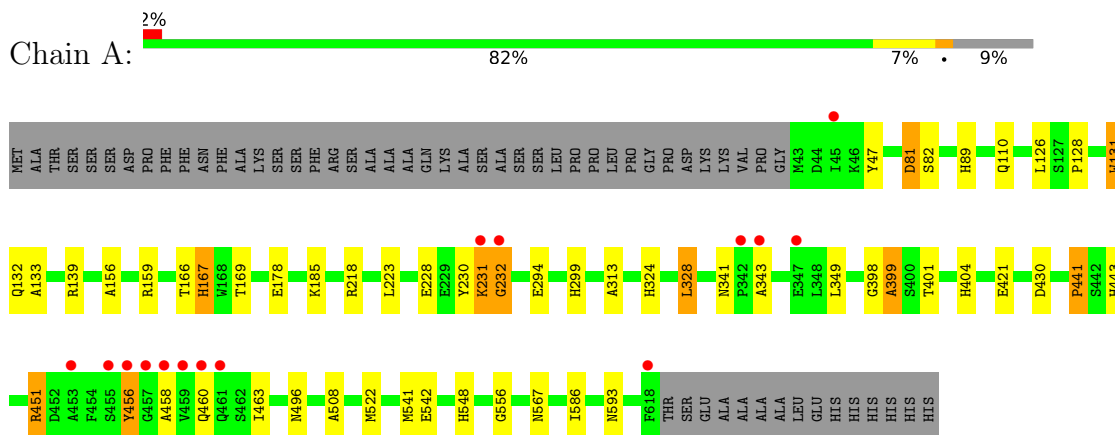
- Molecule 6 is water.

Mol	Chain	Residues	Atoms		ZeroOcc	AltConf
6	A	405	Total 405	O 405	0	0

### 3 Residue-property plots [i](#)

These plots are drawn for all protein, RNA, DNA and oligosaccharide chains in the entry. The first graphic for a chain summarises the proportions of the various outlier classes displayed in the second graphic. The second graphic shows the sequence view annotated by issues in geometry and electron density. Residues are color-coded according to the number of geometric quality criteria for which they contain at least one outlier: green = 0, yellow = 1, orange = 2 and red = 3 or more. A red dot above a residue indicates a poor fit to the electron density ( $RSRZ > 2$ ). Stretches of 2 or more consecutive residues without any outlier are shown as a green connector. Residues present in the sample, but not in the model, are shown in grey.

- Molecule 1: Pyranose 2-oxidase



## 4 Data and refinement statistics

Property	Value	Source
Space group	P 42 21 2	Depositor
Cell constants a, b, c, $\alpha$ , $\beta$ , $\gamma$	102.42Å 102.42Å 119.03Å 90.00° 90.00° 90.00°	Depositor
Resolution (Å)	47.04 – 1.80 47.04 – 1.80	Depositor EDS
% Data completeness (in resolution range)	100.0 (47.04-1.80) 100.0 (47.04-1.80)	Depositor EDS
$R_{merge}$	(Not available)	Depositor
$R_{sym}$	(Not available)	Depositor
$\langle I/\sigma(I) \rangle$ <sup>1</sup>	2.01 (at 1.79Å)	Xtrriage
Refinement program	REFMAC 5.6.0117	Depositor
R, $R_{free}$	0.162 , 0.199 0.173 , 0.213	Depositor DCC
$R_{free}$ test set	1022 reflections (1.73%)	wwPDB-VP
Wilson B-factor (Å <sup>2</sup> )	18.9	Xtrriage
Anisotropy	0.180	Xtrriage
Bulk solvent $k_{sol}$ (e/Å <sup>3</sup> ), $B_{sol}$ (Å <sup>2</sup> )	0.39 , 40.5	EDS
L-test for twinning <sup>2</sup>	$\langle  L  \rangle = 0.45$ , $\langle L^2 \rangle = 0.27$	Xtrriage
Estimated twinning fraction	No twinning to report.	Xtrriage
$F_o, F_c$ correlation	0.96	EDS
Total number of atoms	5035	wwPDB-VP
Average B, all atoms (Å <sup>2</sup> )	22.0	wwPDB-VP

Xtrriage's analysis on translational NCS is as follows: *The largest off-origin peak in the Patterson function is 3.38% of the height of the origin peak. No significant pseudotranslation is detected.*

<sup>1</sup>Intensities estimated from amplitudes.

<sup>2</sup>Theoretical values of  $\langle |L| \rangle$ ,  $\langle L^2 \rangle$  for acentric reflections are 0.5, 0.333 respectively for untwinned datasets, and 0.375, 0.2 for perfectly twinned datasets.

## 5 Model quality i

### 5.1 Standard geometry i

Bond lengths and bond angles in the following residue types are not validated in this section: MES, FDA, 2FG, GAF

The Z score for a bond length (or angle) is the number of standard deviations the observed value is removed from the expected value. A bond length (or angle) with  $|Z| > 5$  is considered an outlier worth inspection. RMSZ is the root-mean-square of all Z scores of the bond lengths (or angles).

Mol	Chain	Bond lengths		Bond angles	
		RMSZ	# Z  >5	RMSZ	# Z  >5
1	A	1.36	17/4656 (0.4%)	1.20	13/6329 (0.2%)

Chiral center outliers are detected by calculating the chiral volume of a chiral center and verifying if the center is modelled as a planar moiety or with the opposite hand. A planarity outlier is detected by checking planarity of atoms in a peptide group, atoms in a mainchain group or atoms of a sidechain that are expected to be planar.

Mol	Chain	#Chirality outliers	#Planarity outliers
1	A	0	3

All (17) bond length outliers are listed below:

Mol	Chain	Res	Type	Atoms	Z	Observed(Å)	Ideal(Å)
1	A	167	HIS	C-N	11.08	1.47	1.33
1	A	349	LEU	N-CA	7.29	1.51	1.46
1	A	548	HIS	CG-CD2	6.72	1.43	1.35
1	A	443	HIS	ND1-CE1	6.58	1.39	1.32
1	A	89	HIS	ND1-CE1	5.89	1.38	1.32
1	A	139	ARG	CD-NE	-5.81	1.38	1.46
1	A	81	ASP	CA-C	5.80	1.60	1.52
1	A	421	GLU	C-O	-5.79	1.16	1.24
1	A	586	ILE	C-O	-5.56	1.17	1.24
1	A	131	TRP	NE1-CE2	-5.44	1.31	1.37
1	A	451	ARG	CA-C	-5.37	1.46	1.52
1	A	82	SER	N-CA	5.32	1.52	1.46
1	A	232	GLY	N-CA	-5.28	1.37	1.45
1	A	166	THR	C-N	5.27	1.43	1.33
1	A	299	HIS	ND1-CE1	5.17	1.37	1.32
1	A	328	LEU	CA-C	5.04	1.59	1.52
1	A	156	ALA	N-CA	-5.03	1.39	1.45

All (13) bond angle outliers are listed below:

Mol	Chain	Res	Type	Atoms	Z	Observed(°)	Ideal(°)
1	A	139	ARG	NE-CZ-NH2	-11.76	108.62	119.20
1	A	139	ARG	CD-NE-CZ	7.85	135.38	124.40
1	A	139	ARG	NE-CZ-NH1	7.24	128.74	121.50
1	A	232	GLY	N-CA-C	-7.14	92.58	113.30
1	A	139	ARG	CG-CD-NE	-6.45	97.80	112.00
1	A	166	THR	CA-C-N	-5.95	111.98	121.44
1	A	166	THR	C-N-CA	-5.95	111.98	121.44
1	A	399	ALA	N-CA-C	-5.40	102.40	110.23
1	A	508	ALA	N-CA-C	5.34	119.06	112.54
1	A	458	ALA	CA-C-N	-5.09	116.01	122.43
1	A	458	ALA	C-N-CA	-5.09	116.01	122.43
1	A	522	MET	N-CA-C	-5.09	105.81	111.36
1	A	128	PRO	CB-CA-C	-5.04	104.69	111.85

There are no chirality outliers.

All (3) planarity outliers are listed below:

Mol	Chain	Res	Type	Group
1	A	230	TYR	Peptide
1	A	231	LYS	Peptide
1	A	456	TYR	Mainchain

## 5.2 Too-close contacts [i](#)

In the following table, the Non-H and H(model) columns list the number of non-hydrogen atoms and hydrogen atoms in the chain respectively. The H(added) column lists the number of hydrogen atoms added and optimized by MolProbity. The Clashes column lists the number of clashes within the asymmetric unit, whereas Symm-Clashes lists symmetry-related clashes.

Mol	Chain	Non-H	H(model)	H(added)	Clashes	Symm-Clashes
1	A	4541	0	4384	41	0
2	A	53	0	30	5	0
3	A	12	0	11	3	0
4	A	12	0	11	0	0
5	A	12	0	13	0	0
6	A	405	0	0	8	0
All	All	5035	0	4449	44	0

The all-atom clashscore is defined as the number of clashes found per 1000 atoms (including hydrogen atoms). The all-atom clashscore for this structure is 5.

All (44) close contacts within the same asymmetric unit are listed below, sorted by their clash magnitude.

Atom-1	Atom-2	Interatomic distance (Å)	Clash overlap (Å)
1:A:399:ALA:HB1	1:A:401:THR:HG22	1.48	0.95
1:A:231:LYS:HA	6:A:1277:HOH:O	1.73	0.88
1:A:456:TYR:CD1	1:A:541:MET:HE2	2.07	0.88
1:A:110:GLN:HE21	1:A:167:HIS:HD1	1.25	0.85
1:A:404:HIS:HE1	6:A:1018:HOH:O	1.74	0.70
1:A:228:GLU:O	1:A:231:LYS:HD3	1.94	0.68
1:A:542:GLU:HG2	6:A:1013:HOH:O	1.96	0.65
1:A:399:ALA:HB1	1:A:401:THR:CG2	2.24	0.64
1:A:460:GLN:O	1:A:460:GLN:NE2	2.30	0.64
1:A:456:TYR:CG	1:A:541:MET:HE2	2.34	0.62
2:A:801:FDA:N5	3:A:802:GAF:H3	2.17	0.59
1:A:399:ALA:CB	1:A:401:THR:HG22	2.30	0.56
1:A:218:ARG:HG3	1:A:430:ASP:OD2	2.06	0.56
1:A:47:TYR:O	1:A:313:ALA:HA	2.08	0.54
1:A:328:LEU:O	1:A:328:LEU:HD23	2.08	0.53
1:A:460:GLN:NE2	6:A:1200:HOH:O	2.43	0.51
1:A:460:GLN:HE22	1:A:463:ILE:H	1.59	0.50
1:A:232:GLY:HA2	6:A:1277:HOH:O	2.10	0.50
1:A:460:GLN:CD	1:A:460:GLN:C	2.81	0.49
1:A:218:ARG:HD2	6:A:1012:HOH:O	2.13	0.48
2:A:801:FDA:C5X	3:A:802:GAF:H3	2.44	0.48
1:A:126:LEU:HD12	1:A:132:GLN:HG3	1.95	0.47
1:A:231:LYS:N	6:A:1277:HOH:O	2.47	0.47
1:A:228:GLU:O	1:A:231:LYS:CD	2.62	0.47
1:A:169:THR:H	2:A:801:FDA:HN5	1.62	0.47
2:A:801:FDA:C4X	3:A:802:GAF:O3	2.63	0.47
1:A:81:ASP:OD1	1:A:81:ASP:C	2.57	0.46
1:A:328:LEU:HD23	1:A:328:LEU:C	2.41	0.46
1:A:231:LYS:HA	1:A:232:GLY:HA2	1.79	0.45
1:A:131:TRP:CH2	1:A:133:ALA:HB2	2.51	0.44
1:A:456:TYR:CD1	1:A:541:MET:CE	2.90	0.44
1:A:223:LEU:O	1:A:223:LEU:HD23	2.18	0.44
1:A:324:HIS:HE1	6:A:971:HOH:O	2.01	0.43
1:A:167:HIS:CD2	1:A:167:HIS:C	2.97	0.43
1:A:178:GLU:OE1	1:A:441:PRO:HG3	2.17	0.43
1:A:460:GLN:NE2	1:A:460:GLN:C	2.77	0.43
1:A:223:LEU:HD23	1:A:223:LEU:C	2.45	0.42
1:A:456:TYR:CE1	1:A:541:MET:HE2	2.50	0.42
1:A:451:ARG:HD2	1:A:451:ARG:HA	1.74	0.41
1:A:398:GLY:O	1:A:399:ALA:C	2.61	0.41

*Continued on next page...*

*Continued from previous page...*

Atom-1	Atom-2	Interatomic distance (Å)	Clash overlap (Å)
1:A:126:LEU:CD1	1:A:132:GLN:HG3	2.51	0.41
1:A:556:GLY:O	1:A:567:ASN:HA	2.21	0.40
1:A:159:ARG:HA	2:A:801:FDA:O2B	2.22	0.40
1:A:341:ASN:HD21	1:A:343:ALA:HB3	1.87	0.40

There are no symmetry-related clashes.

## 5.3 Torsion angles [i](#)

### 5.3.1 Protein backbone [i](#)

In the following table, the Percentiles column shows the percent Ramachandran outliers of the chain as a percentile score with respect to all X-ray entries followed by that with respect to entries of similar resolution.

The Analysed column shows the number of residues for which the backbone conformation was analysed, and the total number of residues.

Mol	Chain	Analysed	Favoured	Allowed	Outliers	Percentiles
1	A	575/633 (91%)	559 (97%)	16 (3%)	0	100   100

There are no Ramachandran outliers to report.

### 5.3.2 Protein sidechains [i](#)

In the following table, the Percentiles column shows the percent sidechain outliers of the chain as a percentile score with respect to all X-ray entries followed by that with respect to entries of similar resolution.

The Analysed column shows the number of residues for which the sidechain conformation was analysed, and the total number of residues.

Mol	Chain	Analysed	Rotameric	Outliers	Percentiles
1	A	504/547 (92%)	499 (99%)	5 (1%)	68   64

All (5) residues with a non-rotameric sidechain are listed below:

Mol	Chain	Res	Type
1	A	185	LYS
1	A	294	GLU

*Continued on next page...*

*Continued from previous page...*

Mol	Chain	Res	Type
1	A	441	PRO
1	A	496	ASN
1	A	593	ASN

Sometimes sidechains can be flipped to improve hydrogen bonding and reduce clashes. All (5) such sidechains are listed below:

Mol	Chain	Res	Type
1	A	108	GLN
1	A	257	ASN
1	A	324	HIS
1	A	341	ASN
1	A	460	GLN

### 5.3.3 RNA [i](#)

There are no RNA molecules in this entry.

### 5.4 Non-standard residues in protein, DNA, RNA chains [i](#)

There are no non-standard protein/DNA/RNA residues in this entry.

### 5.5 Carbohydrates [i](#)

There are no oligosaccharides in this entry.

### 5.6 Ligand geometry [i](#)

4 ligands are modelled in this entry.

In the following table, the Counts columns list the number of bonds (or angles) for which Mogul statistics could be retrieved, the number of bonds (or angles) that are observed in the model and the number of bonds (or angles) that are defined in the Chemical Component Dictionary. The Link column lists molecule types, if any, to which the group is linked. The Z score for a bond length (or angle) is the number of standard deviations the observed value is removed from the expected value. A bond length (or angle) with  $|Z| > 2$  is considered an outlier worth inspection. RMSZ is the root-mean-square of all Z scores of the bond lengths (or angles).

Mol	Type	Chain	Res	Link	Bond lengths			Bond angles		
					Counts	RMSZ	$\# Z  > 2$	Counts	RMSZ	$\# Z  > 2$
5	MES	A	804	-	12,12,12	1.88	3 (25%)	15,16,16	1.74	4 (26%)

Mol	Type	Chain	Res	Link	Bond lengths			Bond angles		
					Counts	RMSZ	# Z  > 2	Counts	RMSZ	# Z  > 2
4	2FG	A	803	-	12,12,12	1.00	0	16,17,17	2.54	4 (25%)
3	GAF	A	802	-	12,12,12	2.27	4 (33%)	16,17,17	1.32	2 (12%)
2	FDA	A	801	1	57,58,58	1.55	10 (17%)	78,89,89	2.38	27 (34%)

In the following table, the Chirals column lists the number of chiral outliers, the number of chiral centers analysed, the number of these observed in the model and the number defined in the Chemical Component Dictionary. Similar counts are reported in the Torsion and Rings columns. '-' means no outliers of that kind were identified.

Mol	Type	Chain	Res	Link	Chirals	Torsions	Rings
5	MES	A	804	-	-	0/6/14/14	0/1/1/1
4	2FG	A	803	-	-	0/2/22/22	0/1/1/1
3	GAF	A	802	-	-	1/2/22/22	0/1/1/1
2	FDA	A	801	1	-	0/34/50/50	0/6/6/6

All (17) bond length outliers are listed below:

Mol	Chain	Res	Type	Atoms	Z	Observed(Å)	Ideal(Å)
3	A	802	GAF	C2-C1	6.21	1.58	1.52
2	A	801	FDA	C8M-C8	5.98	1.62	1.51
5	A	804	MES	C8-S	-5.05	1.70	1.77
2	A	801	FDA	C4X-C4	2.74	1.50	1.41
2	A	801	FDA	C2B-C3B	-2.50	1.46	1.53
2	A	801	FDA	C10-N10	-2.46	1.34	1.38
2	A	801	FDA	C2A-N3A	2.46	1.38	1.33
5	A	804	MES	C3-N4	2.42	1.53	1.46
2	A	801	FDA	C7M-C7	2.31	1.55	1.51
2	A	801	FDA	C5'-C4'	2.26	1.54	1.51
3	A	802	GAF	F2-C2	-2.24	1.36	1.40
2	A	801	FDA	C2A-N1A	2.17	1.37	1.33
2	A	801	FDA	C2'-C3'	-2.13	1.49	1.53
2	A	801	FDA	C2-N1	-2.12	1.34	1.37
3	A	802	GAF	O1-C1	2.06	1.46	1.39
5	A	804	MES	O1S-S	2.03	1.50	1.45
3	A	802	GAF	C2-C3	-2.02	1.50	1.52

All (37) bond angle outliers are listed below:

Mol	Chain	Res	Type	Atoms	Z	Observed(°)	Ideal(°)
2	A	801	FDA	C4A-N9A-C8A	8.12	114.26	105.74
2	A	801	FDA	N3A-C2A-N1A	-6.75	118.37	128.58

*Continued on next page...*

Continued from previous page...

Mol	Chain	Res	Type	Atoms	Z	Observed(°)	Ideal(°)
2	A	801	FDA	N9A-C8A-N7A	-6.41	104.84	113.94
4	A	803	2FG	O5-C1-C2	5.93	117.40	109.75
4	A	803	2FG	F2-C2-C3	5.41	113.50	108.81
2	A	801	FDA	C2B-C1B-N9A	5.25	126.36	113.30
2	A	801	FDA	O4B-C1B-N9A	5.23	118.13	108.09
2	A	801	FDA	N3A-C4A-N9A	4.20	134.31	127.17
5	A	804	MES	O2S-S-C8	-4.14	100.47	106.73
2	A	801	FDA	C6-C5X-N5	-3.89	113.00	119.76
2	A	801	FDA	C5A-C4A-N9A	-3.50	101.99	105.81
2	A	801	FDA	O2B-C2B-C1B	3.46	122.01	110.10
2	A	801	FDA	O3B-C3B-C4B	3.44	120.95	111.08
2	A	801	FDA	C1B-N9A-C8A	-3.35	119.66	127.09
2	A	801	FDA	C2A-N1A-C6A	3.25	124.07	118.73
2	A	801	FDA	O4B-C4B-C3B	3.11	111.32	105.15
3	A	802	GAF	O5-C5-C6	3.08	114.07	106.44
2	A	801	FDA	C5A-N7A-C8A	3.03	108.21	103.45
5	A	804	MES	O1-C2-C3	-2.99	105.33	111.77
2	A	801	FDA	C3B-C2B-C1B	2.98	107.10	101.46
3	A	802	GAF	C6-C5-C4	-2.92	105.84	113.02
2	A	801	FDA	O2B-C2B-C3B	2.91	121.16	111.82
4	A	803	2FG	O1-C1-C2	2.78	120.84	109.33
4	A	803	2FG	O1-C1-O5	2.73	118.51	110.41
2	A	801	FDA	C4'-C3'-C2'	-2.66	109.14	113.57
2	A	801	FDA	C6-C5X-C9A	-2.58	116.97	119.80
2	A	801	FDA	C5X-N5-C4X	-2.55	115.19	121.08
2	A	801	FDA	C2A-N3A-C4A	2.31	117.48	111.83
2	A	801	FDA	N3-C2-N1	2.26	119.29	115.74
2	A	801	FDA	O2P-P-O3P	-2.24	101.22	107.27
5	A	804	MES	C2-C3-N4	2.20	113.46	110.12
2	A	801	FDA	C5A-C4A-N3A	-2.19	123.70	126.72
5	A	804	MES	O1S-S-C8	-2.17	103.44	106.73
2	A	801	FDA	O4-C4-C4X	-2.10	122.19	127.26
2	A	801	FDA	O4B-C4B-C5B	2.09	116.04	109.33
2	A	801	FDA	C5B-C4B-C3B	2.05	122.58	115.21
2	A	801	FDA	O3P-PA-O1A	-2.01	104.67	110.70

There are no chirality outliers.

All (1) torsion outliers are listed below:

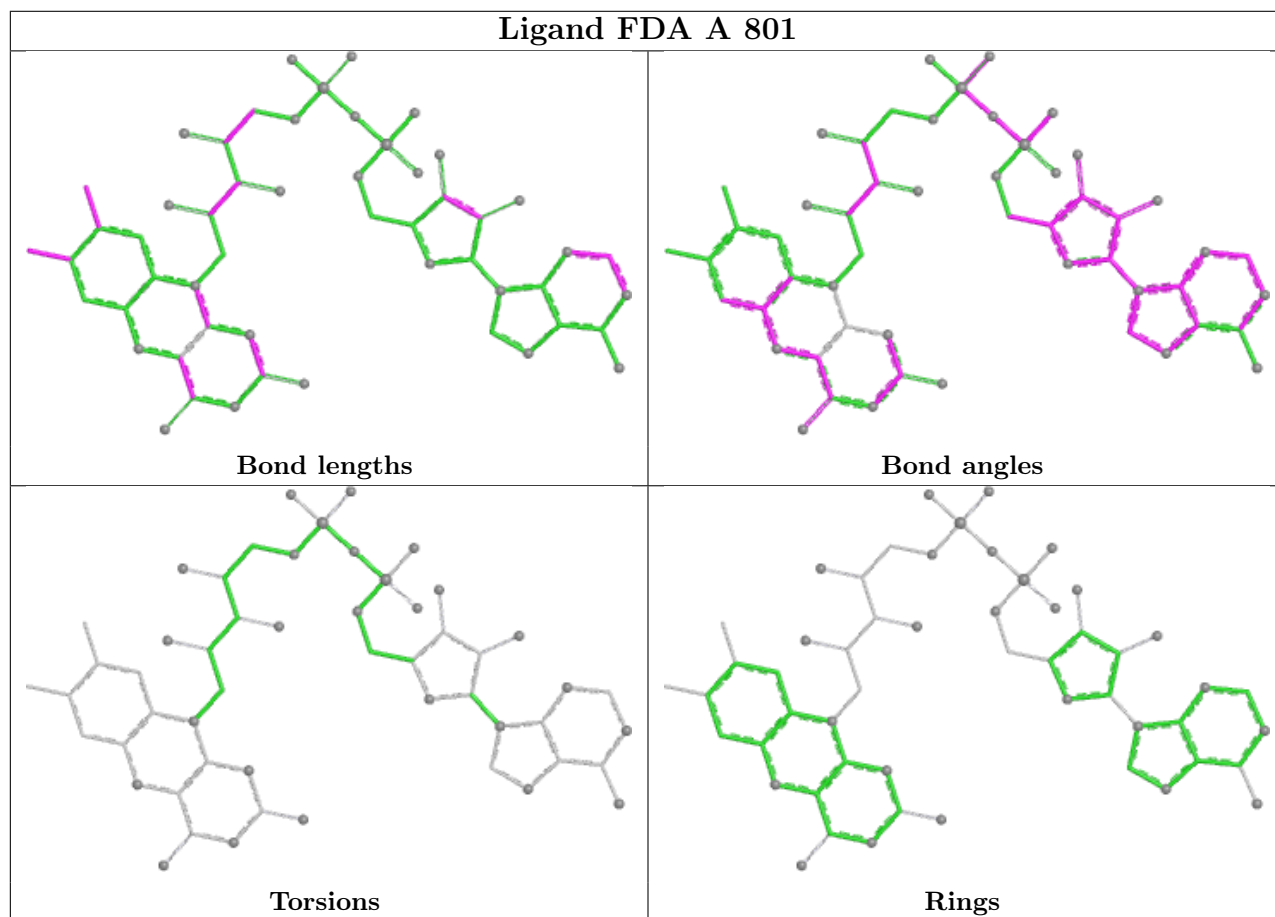
Mol	Chain	Res	Type	Atoms
3	A	802	GAF	O5-C5-C6-O6

There are no ring outliers.

2 monomers are involved in 5 short contacts:

Mol	Chain	Res	Type	Clashes	Symm-Clashes
3	A	802	GAF	3	0
2	A	801	FDA	5	0

The following is a two-dimensional graphical depiction of Mogul quality analysis of bond lengths, bond angles, torsion angles, and ring geometry for all instances of the Ligand of Interest. In addition, ligands with molecular weight > 250 and outliers as shown on the validation Tables will also be included. For torsion angles, if less than 5% of the Mogul distribution of torsion angles is within 10 degrees of the torsion angle in question, then that torsion angle is considered an outlier. Any bond that is central to one or more torsion angles identified as an outlier by Mogul will be highlighted in the graph. For rings, the root-mean-square deviation (RMSD) between the ring in question and similar rings identified by Mogul is calculated over all ring torsion angles. If the average RMSD is greater than 60 degrees and the minimal RMSD between the ring in question and any Mogul-identified rings is also greater than 60 degrees, then that ring is considered an outlier. The outliers are highlighted in purple. The color gray indicates Mogul did not find sufficient equivalents in the CSD to analyse the geometry.



## 5.7 Other polymers [i](#)

There are no such residues in this entry.

## 5.8 Polymer linkage issues [i](#)

There are no chain breaks in this entry.

## 6 Fit of model and data [i](#)

### 6.1 Protein, DNA and RNA chains [i](#)

In the following table, the column labelled ‘#RSRZ> 2’ contains the number (and percentage) of RSRZ outliers, followed by percent RSRZ outliers for the chain as percentile scores relative to all X-ray entries and entries of similar resolution. The OWAB column contains the minimum, median, 95<sup>th</sup> percentile and maximum values of the occupancy-weighted average B-factor per residue. The column labelled ‘Q< 0.9’ lists the number of (and percentage) of residues with an average occupancy less than 0.9.

Mol	Chain	Analysed	<RSRZ>	#RSRZ>2	OWAB(Å <sup>2</sup> )	Q<0.9
1	A	576/633 (90%)	-0.26	15 (2%) 57 57	9, 20, 40, 100	1 (0%)

All (15) RSRZ outliers are listed below:

Mol	Chain	Res	Type	RSRZ
1	A	459	VAL	7.5
1	A	458	ALA	5.3
1	A	456	TYR	4.9
1	A	457	GLY	4.4
1	A	461	GLN	4.0
1	A	460	GLN	3.8
1	A	45	ILE	3.0
1	A	455	SER	2.8
1	A	232	GLY	2.7
1	A	347	GLU	2.5
1	A	343	ALA	2.5
1	A	342	PRO	2.5
1	A	618	PHE	2.3
1	A	231	LYS	2.1
1	A	453	ALA	2.1

### 6.2 Non-standard residues in protein, DNA, RNA chains [i](#)

There are no non-standard protein/DNA/RNA residues in this entry.

### 6.3 Carbohydrates [i](#)

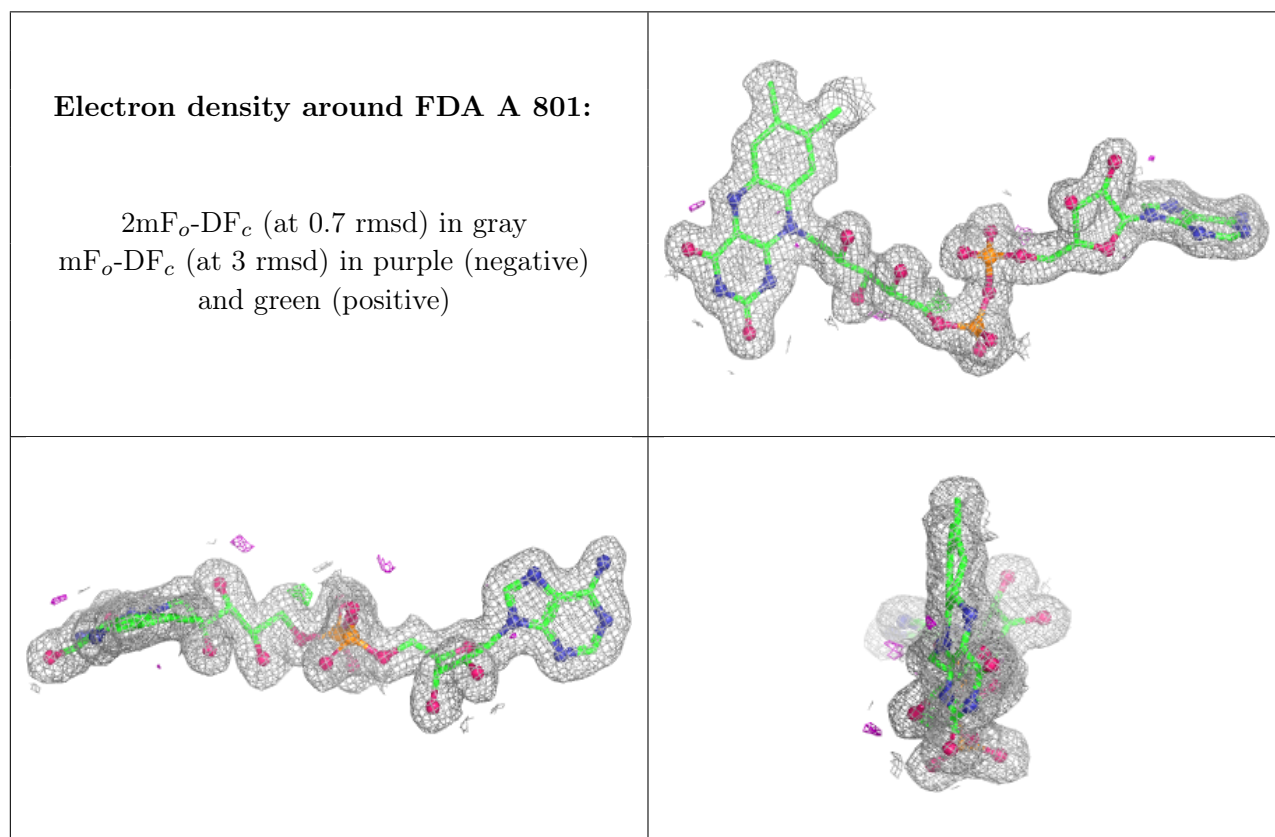
There are no oligosaccharides in this entry.

## 6.4 Ligands [i](#)

In the following table, the Atoms column lists the number of modelled atoms in the group and the number defined in the chemical component dictionary. The B-factors column lists the minimum, median, 95<sup>th</sup> percentile and maximum values of B factors of atoms in the group. The column labelled 'Q< 0.9' lists the number of atoms with occupancy less than 0.9.

Mol	Type	Chain	Res	Atoms	RSCC	RSR	B-factors(Å <sup>2</sup> )	Q<0.9
3	GAF	A	802	12/12	0.86	0.12	27,30,34,44	0
4	2FG	A	803	12/12	0.92	0.08	27,31,33,33	0
5	MES	A	804	12/12	0.95	0.09	23,26,27,28	0
2	FDA	A	801	53/53	0.98	0.04	11,13,16,17	0

The following is a graphical depiction of the model fit to experimental electron density of all instances of the Ligand of Interest. In addition, ligands with molecular weight > 250 and outliers as shown on the geometry validation Tables will also be included. Each fit is shown from different orientation to approximate a three-dimensional view.



## 6.5 Other polymers [i](#)

There are no such residues in this entry.