



# wwPDB NMR Structure Validation Summary Report ⓘ

Mar 26, 2026 – 04:30 AM UTC

PDB ID : 1MP7 / pdb\_00001mp7  
Title : A Third Complex of Post-Activated Neocarzinostatin Chromophore with DNA. Bulge DNA Binding from the Minor Groove  
Authors : Kwon, Y.; Xi, Z.; Kappen, L.S.; Goldberg, I.H.; Gao, X.  
Deposited on : 2002-09-11

This is a wwPDB NMR Structure Validation Summary Report for a publicly released PDB entry.

We welcome your comments at [validation@mail.wwpdb.org](mailto:validation@mail.wwpdb.org)

A user guide is available at

<https://www.wwpdb.org/validation/2017/NMRValidationReportHelp>

with specific help available everywhere you see the ⓘ symbol.

The types of validation reports are described at

<https://www.wwpdb.org/validation/2017/FAQs#types>.

---

The following versions of software and data (see [references ⓘ](#)) were used in the production of this report:

MolProbity : 4-5-2 with Phenix2.0  
Mogul : 2022.3.0, CSD as543be (2022)  
Buster-report : wwPDB partial adaption of 1.1.7 (2018)  
Percentile statistics : 20250101.v01 (using entries in the PDB archive January 1st 2025)  
wwPDB-RCI : v\_1n\_11\_5\_13\_A (Berjanski et al., 2005)  
PANAV : Wang et al. (2010)  
wwPDB-ShiftChecker : v1.2  
Ideal geometry (proteins) : Engh & Huber (2001)  
Ideal geometry (DNA, RNA) : Parkinson et al. (1996)  
Validation Pipeline (wwPDB-VP) : 2.49



## 2 Ensemble composition and analysis

This entry contains 9 models. This entry does not contain polypeptide chains, therefore identification of well-defined residues and clustering analysis are not possible. All residues are included in the validation scores.

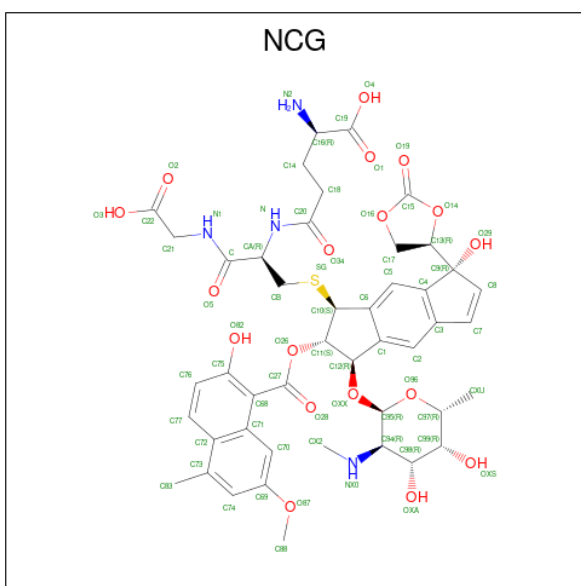
### 3 Entry composition [i](#)

There are 2 unique types of molecules in this entry. The entry contains 438 atoms, of which 165 are hydrogens and 0 are deuteriums.

- Molecule 1 is a DNA chain called 5'-D(\*GP\*CP\*CP\*AP\*GP\*AP\*GP\*AP\*GP\*C)-3'.

Mol	Chain	Residues	Atoms						Trace
			Total	C	H	N	O	P	
1	A	10	317	97	112	44	55	9	0

- Molecule 2 is [(R)-4-((1,3-DIOXOLANE-2-OXY)-4-(S)-YL)-4-HYDROXY]- (R)-10-(2-MET HYLAMINO-5-METHYL-2,6-DIDEOXYGALACTOPYRANOSYL-OXY)- (R)-11-(2-HYD ROXY-5-METHYL-7-METHOXY-1-NAPHTHOYL-OXY)- (R)-12-S-GLUTATHIONYL-4, 10,11,12-TETRAHYDROINDACENE (CCD ID: NCG) (formula: C<sub>45</sub>H<sub>52</sub>N<sub>4</sub>O<sub>18</sub>S).



Mol	Chain	Residues	Atoms					
			Total	C	H	N	O	S
2	A	1	121	45	53	4	18	1

## 4 Residue-property plots [i](#)

### 4.1 Average score per residue in the NMR ensemble

These plots are provided for all protein, RNA, DNA and oligosaccharide chains in the entry. The first graphic is the same as shown in the summary in section 1 of this report. The second graphic shows the sequence where residues are colour-coded according to the number of geometric quality criteria for which they contain at least one outlier: green = 0, yellow = 1, orange = 2 and red = 3 or more. Stretches of 2 or more consecutive residues without any outliers are shown as green connectors. Residues which are classified as ill-defined in the NMR ensemble, are shown in cyan with an underline colour-coded according to the previous scheme. Residues which were present in the experimental sample, but not modelled in the final structure are shown in grey.

- Molecule 1: 5'-D(\*GP\*CP\*CP\*AP\*GP\*AP\*GP\*AP\*GP\*C)-3'



### 4.2 Residue scores for the representative (author defined) model from the NMR ensemble

The representative model is number 1. Colouring as in section 4.1 above.

- Molecule 1: 5'-D(\*GP\*CP\*CP\*AP\*GP\*AP\*GP\*AP\*GP\*C)-3'



## 5 Refinement protocol and experimental data overview

The models were refined using the following method: *distance geometry, simulated annealing, restrained molecular dynamics.*

Of the 9 calculated structures, 9 were deposited, based on the following criterion: *all calculated structures submitted, back calculated data agree with experimental NOESY spectrum, structures with acceptable covalent geometry, structures with favorable non-bond energy, structures with the least restraint violations, structures with the lowest energy.*

The following table shows the software used for structure solution, optimisation and refinement.

Software name	Classification	Version
X-PLOR	structure solution	3.851
X-PLOR	refinement	3.851

No chemical shift data was provided.

## 6 Model quality [i](#)

### 6.1 Standard geometry [i](#)

Bond lengths and bond angles in the following residue types are not validated in this section: NCG

There are no covalent bond-length or bond-angle outliers.

There are no bond-length outliers.

There are no bond-angle outliers.

There are no chirality outliers.

There are no planarity outliers.

### 6.2 Too-close contacts [i](#)

In the following table, the Non-H and H(model) columns list the number of non-hydrogen atoms and hydrogen atoms in each chain respectively. The H(added) column lists the number of hydrogen atoms added and optimized by MolProbity. The Clashes column lists the number of clashes averaged over the ensemble.

Mol	Chain	Non-H	H(model)	H(added)	Clashes
1	A	205	112	112	5±2
2	A	68	53	52	4±1
All	All	2457	1485	1476	87

The all-atom clashscore is defined as the number of clashes found per 1000 atoms (including hydrogen atoms). The all-atom clashscore for this structure is 22.

5 of 17 unique clashes are listed below, sorted by their clash magnitude.

Atom-1	Atom-2	Clash(Å)	Distance(Å)	Models	
				Worst	Total
2:A:11:NCG:SG	2:A:11:NCG:C20	0.83	2.66	3	9
1:A:8:DA:H2''	1:A:9:DG:OP2	0.75	1.80	2	9
2:A:11:NCG:H8B	2:A:11:NCG:O26	0.66	1.90	9	9
2:A:11:NCG:SG	2:A:11:NCG:H16	0.61	2.35	1	9
1:A:4:DA:H2''	1:A:5:DG:C8	0.57	2.34	1	8

## 6.3 Torsion angles [i](#)

### 6.3.1 Protein backbone [i](#)

There are no protein molecules in this entry.

### 6.3.2 Protein sidechains [i](#)

There are no protein molecules in this entry.

### 6.3.3 RNA [i](#)

There are no RNA molecules in this entry.

## 6.4 Non-standard residues in protein, DNA, RNA chains [i](#)

There are no non-standard protein/DNA/RNA residues in this entry.

## 6.5 Carbohydrates [i](#)

There are no oligosaccharides in this entry.

## 6.6 Ligand geometry [i](#)

1 ligand is modelled in this entry.

In the following table, the Counts columns list the number of bonds for which Mogul statistics could be retrieved, the number of bonds that are observed in the model and the number of bonds that are defined in the chemical component dictionary. The Link column lists molecule types, if any, to which the group is linked. The Z score for a bond length is the number of standard deviations the observed value is removed from the expected value. A bond length with  $|Z| > 2$  is considered an outlier worth inspection. RMSZ is the average root-mean-square of all Z scores of the bond lengths.

Mol	Type	Chain	Res	Link	Bond lengths		
					Counts	RMSZ	#Z>2
2	NCG	A	11	-	71,74,74	1.78±0.01	16±0 (21±0%)

In the following table, the Counts columns list the number of angles for which Mogul statistics could be retrieved, the number of angles that are observed in the model and the number of angles that are defined in the chemical component dictionary. The Link column lists molecule types, if any, to which the group is linked. The Z score for a bond angle is the number of standard

deviations the observed value is removed from the expected value. A bond angle with  $|Z| > 2$  is considered an outlier worth inspection. RMSZ is the average root-mean-square of all Z scores of the bond angles.

Mol	Type	Chain	Res	Link	Bond angles		
					Counts	RMSZ	#Z>2
2	NCG	A	11	-	89,110,110	1.77±0.01	12±1 (13±0%)

In the following table, the Chirals column lists the number of chiral outliers, the number of chiral centers analysed, the number of these observed in the model and the number defined in the chemical component dictionary. Similar counts are reported in the Torsions and Rings columns. '-' means no outliers of that kind were identified.

Mol	Type	Chain	Res	Link	Chirals	Torsions	Rings
2	NCG	A	11	-	-	0±0,46,106,106	0±0,7,7,7

5 of 16 unique bond outliers are listed below. They are sorted according to the Z-score of the worst occurrence in the ensemble.

Mol	Chain	Res	Type	Atoms	Z	Observed(Å)	Ideal(Å)	Models	
								Worst	Total
2	A	11	NCG	C9-C4	7.33	1.47	1.52	6	9
2	A	11	NCG	C20-N	5.44	1.45	1.34	7	9
2	A	11	NCG	C-N1	5.07	1.45	1.33	3	9
2	A	11	NCG	O14-C13	3.58	1.41	1.46	9	9
2	A	11	NCG	C9-C13	3.24	1.53	1.55	6	9

5 of 13 unique angle outliers are listed below. They are sorted according to the Z-score of the worst occurrence in the ensemble.

Mol	Chain	Res	Type	Atoms	Z	Observed(°)	Ideal(°)	Models	
								Worst	Total
2	A	11	NCG	CX2-NX0-C94	9.10	125.98	114.23	2	9
2	A	11	NCG	CA-N-C20	4.57	110.21	121.68	3	9
2	A	11	NCG	O26-C27-O28	4.26	116.62	123.55	3	9
2	A	11	NCG	C21-N1-C	4.09	111.07	121.38	5	9
2	A	11	NCG	C11-O26-C27	3.79	111.19	117.24	7	9

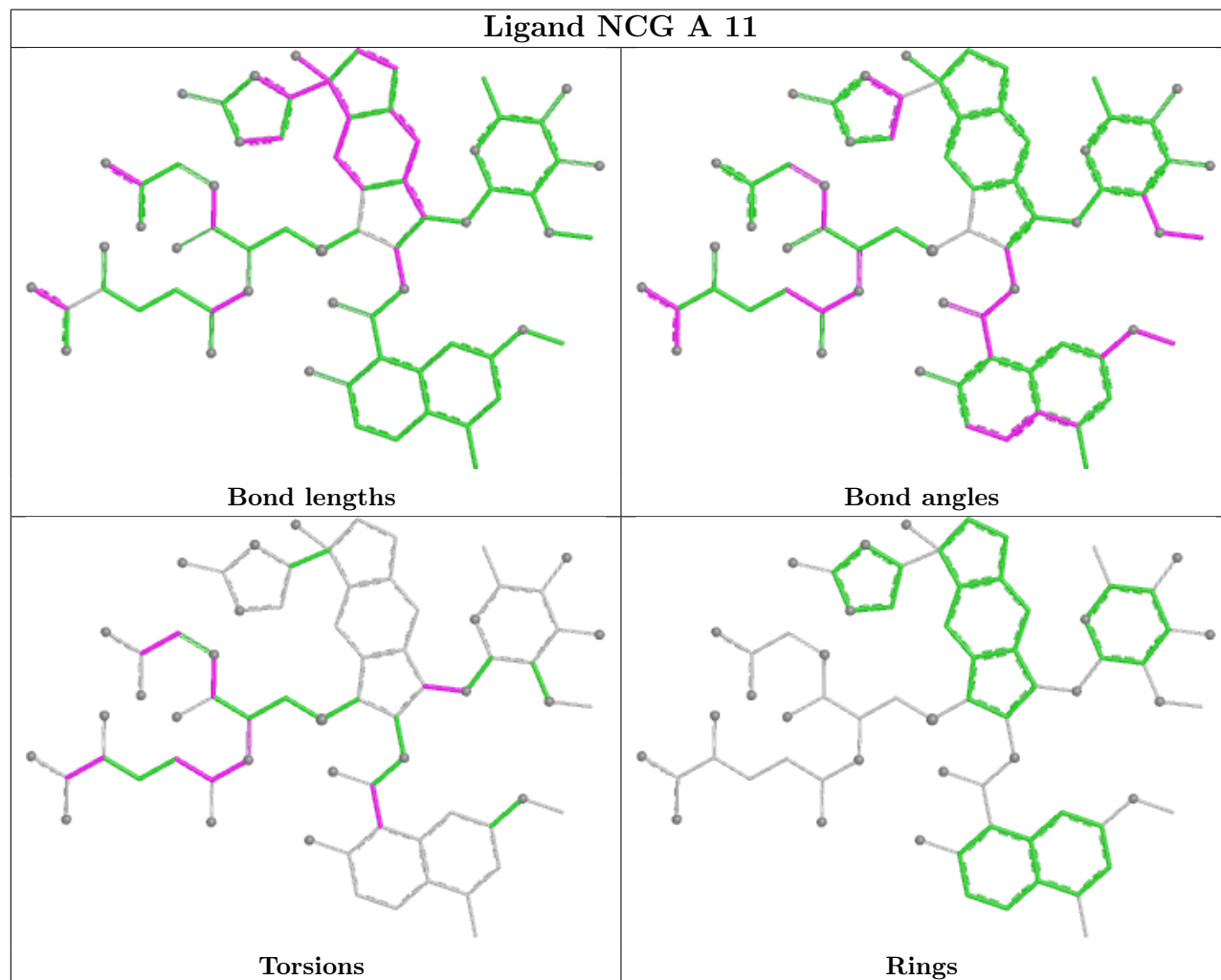
There are no chirality outliers.

There are no torsion outliers.

There are no ring outliers.

The following is a two-dimensional graphical depiction of Mogul quality analysis of bond lengths, bond angles, torsion angles, and ring geometry for all instances of the Ligand of Interest. In

addition, ligands with molecular weight  $> 250$  and outliers as shown on the validation Tables will also be included. For torsion angles, if less than 5% of the Mogul distribution of torsion angles is within 10 degrees of the torsion angle in question, then that torsion angle is considered an outlier. Any bond that is central to one or more torsion angles identified as an outlier by Mogul will be highlighted in the graph. For rings, the root-mean-square deviation (RMSD) between the ring in question and similar rings identified by Mogul is calculated over all ring torsion angles. If the average RMSD is greater than 60 degrees and the minimal RMSD between the ring in question and any Mogul-identified rings is also greater than 60 degrees, then that ring is considered an outlier. The outliers are highlighted in purple. The color gray indicates Mogul did not find sufficient equivalents in the CSD to analyse the geometry.



## 6.7 Other polymers [\(i\)](#)

There are no such molecules in this entry.

## 6.8 Polymer linkage issues [\(i\)](#)

There are no chain breaks in this entry.

## 7 Chemical shift validation

No chemical shift data were provided