



wwPDB X-ray Structure Validation Summary Report ⓘ

Mar 6, 2026 – 01:06 PM UTC

PDB ID : 4MS1 / pdb_00004ms1
Title : Crystal structure of the extracellular domain of human GABA(B) receptor bound to the antagonist CGP46381
Authors : Geng, Y.; Bush, M.; Mosyak, L.; Wang, F.; Fan, Q.R.
Deposited on : 2013-09-18
Resolution : 2.25 Å(reported)

This is a wwPDB X-ray Structure Validation Summary Report for a publicly released PDB entry.

We welcome your comments at validation@mail.wwpdb.org

A user guide is available at

<https://www.wwpdb.org/validation/2017/XrayValidationReportHelp>

with specific help available everywhere you see the ⓘ symbol.

The types of validation reports are described at

<http://www.wwpdb.org/validation/2017/FAQs#types>.

The following versions of software and data (see [references ⓘ](#)) were used in the production of this report:

MolProbity : 4-5-2 with Phenix2.0
Mogul : 2022.3.0, CSD as543be (2022)
Xtriage (Phenix) : 2.0
EDS : 3.0
Percentile statistics : 20250101.v01 (using entries in the PDB archive January 1st 2025)
CCP4 : 9.0.010 (Gargrove)
Density-Fitness : 1.0.12
Ideal geometry (proteins) : Engh & Huber (2001)
Ideal geometry (DNA, RNA) : Parkinson et al. (1996)
Validation Pipeline (wwPDB-VP) : 2.49

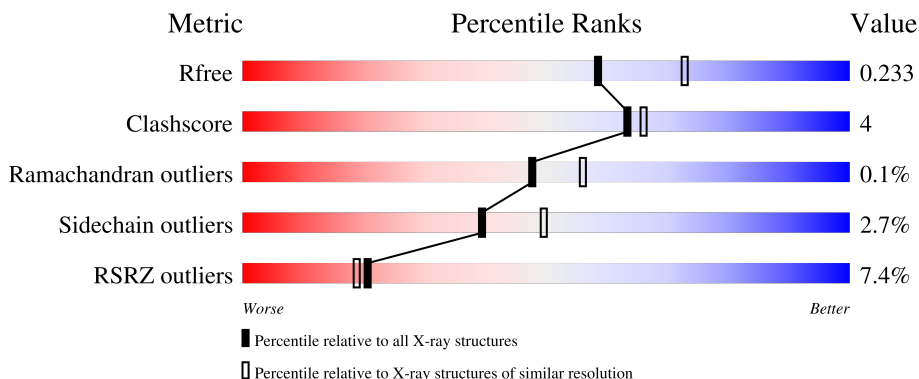
1 Overall quality at a glance

The following experimental techniques were used to determine the structure:

X-RAY DIFFRACTION

The reported resolution of this entry is 2.25 Å.

Percentile scores (ranging between 0-100) for global validation metrics of the entry are shown in the following graphic. The table shows the number of entries on which the scores are based.



Metric	Whole archive (#Entries)	Similar resolution (#Entries, resolution range(Å))
R_{free}	180053	1898 (2.26-2.26)
Clashscore	190562	2005 (2.26-2.26)
Ramachandran outliers	187476	1965 (2.26-2.26)
Sidechain outliers	187428	1966 (2.26-2.26)
RSRZ outliers	180081	1898 (2.26-2.26)

The table below summarises the geometric issues observed across the polymeric chains and their fit to the electron density. The red, orange, yellow and green segments of the lower bar indicate the fraction of residues that contain outliers for ≥ 3 , 2, 1 and 0 types of geometric quality criteria respectively. A grey segment represents the fraction of residues that are not modelled. The numeric value for each fraction is indicated below the corresponding segment, with a dot representing fractions $\leq 5\%$. The upper red bar (where present) indicates the fraction of residues that have poor fit to the electron density. The numeric value is given above the bar.

Mol	Chain	Length	Quality of chain
1	A	420	 10% 82% 14% ..
2	B	433	 5% 82% 10% 7%
3	C	4	 75% 25%
4	D	3	 33% 67%

2 Entry composition [i](#)

There are 7 unique types of molecules in this entry. The entry contains 6921 atoms, of which 0 are hydrogens and 0 are deuteriums.

In the tables below, the ZeroOcc column contains the number of atoms modelled with zero occupancy, the AltConf column contains the number of residues with at least one atom in alternate conformation and the Trace column contains the number of residues modelled with at most 2 atoms.

- Molecule 1 is a protein called Gamma-aminobutyric acid type B receptor subunit 1.

Mol	Chain	Residues	Atoms					ZeroOcc	AltConf	Trace
			Total	C	N	O	S			
1	A	407	3271	2090	551	616	14	0	0	0

There are 8 discrepancies between the modelled and reference sequences:

Chain	Residue	Modelled	Actual	Comment	Reference
A	460	ASP	-	expression tag	UNP Q9UBS5
A	461	TYR	-	expression tag	UNP Q9UBS5
A	462	LYS	-	expression tag	UNP Q9UBS5
A	463	ASP	-	expression tag	UNP Q9UBS5
A	464	ASP	-	expression tag	UNP Q9UBS5
A	465	ASP	-	expression tag	UNP Q9UBS5
A	466	ASP	-	expression tag	UNP Q9UBS5
A	467	LYS	-	expression tag	UNP Q9UBS5

- Molecule 2 is a protein called Gamma-aminobutyric acid type B receptor subunit 2.

Mol	Chain	Residues	Atoms					ZeroOcc	AltConf	Trace
			Total	C	N	O	S			
2	B	403	3214	2052	543	604	15	0	0	0

There are 8 discrepancies between the modelled and reference sequences:

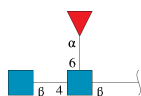
Chain	Residue	Modelled	Actual	Comment	Reference
B	467	ASP	-	expression tag	UNP O75899
B	468	TYR	-	expression tag	UNP O75899
B	469	LYS	-	expression tag	UNP O75899
B	470	ASP	-	expression tag	UNP O75899
B	471	ASP	-	expression tag	UNP O75899
B	472	ASP	-	expression tag	UNP O75899
B	473	ASP	-	expression tag	UNP O75899
B	474	LYS	-	expression tag	UNP O75899

- Molecule 3 is an oligosaccharide called beta-D-mannopyranose-(1-3)-alpha-D-mannopyranose-(1-4)-2-acetamido-2-deoxy-beta-D-glucopyranose-(1-4)-2-acetamido-2-deoxy-beta-D-glucopyranose.



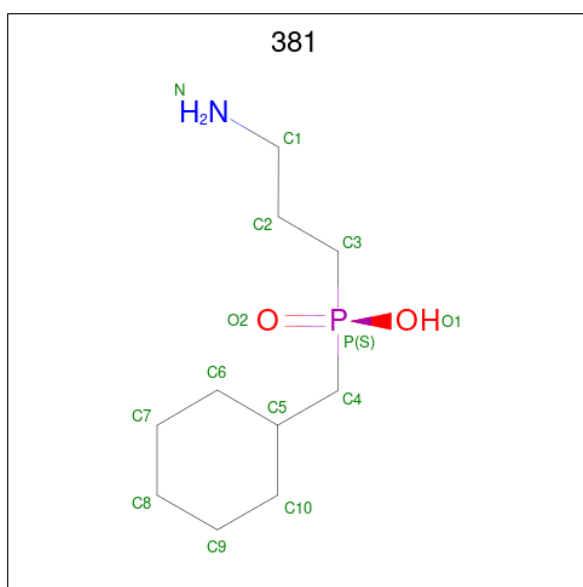
Mol	Chain	Residues	Atoms				ZeroOcc	AltConf	Trace
			Total	C	N	O			
3	C	4	50	28	2	20	0	0	0

- Molecule 4 is an oligosaccharide called 2-acetamido-2-deoxy-beta-D-glucopyranose-(1-4)-[alpha-L-fucopyranose-(1-6)]2-acetamido-2-deoxy-beta-D-glucopyranose.



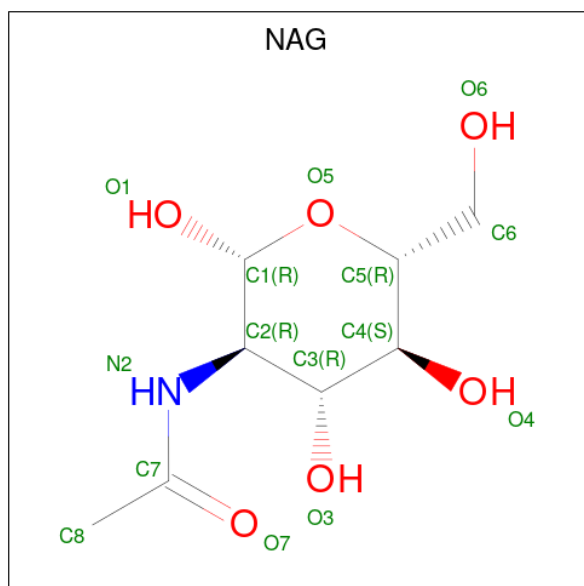
Mol	Chain	Residues	Atoms				ZeroOcc	AltConf	Trace
			Total	C	N	O			
4	D	3	38	22	2	14	0	0	0

- Molecule 5 is (S)-(3-aminopropyl)(cyclohexylmethyl)phosphinic acid (CCD ID: 381) (formula: C₁₀H₂₂NO₂P).



Mol	Chain	Residues	Atoms					ZeroOcc	AltConf
			Total	C	N	O	P		
5	A	1	14	10	1	2	1	0	0

- Molecule 6 is 2-acetamido-2-deoxy-beta-D-glucopyranose (CCD ID: NAG) (formula: $C_8H_{15}NO_6$).



Mol	Chain	Residues	Atoms				ZeroOcc	AltConf
			Total	C	N	O		
6	A	1	14	8	1	5	0	0

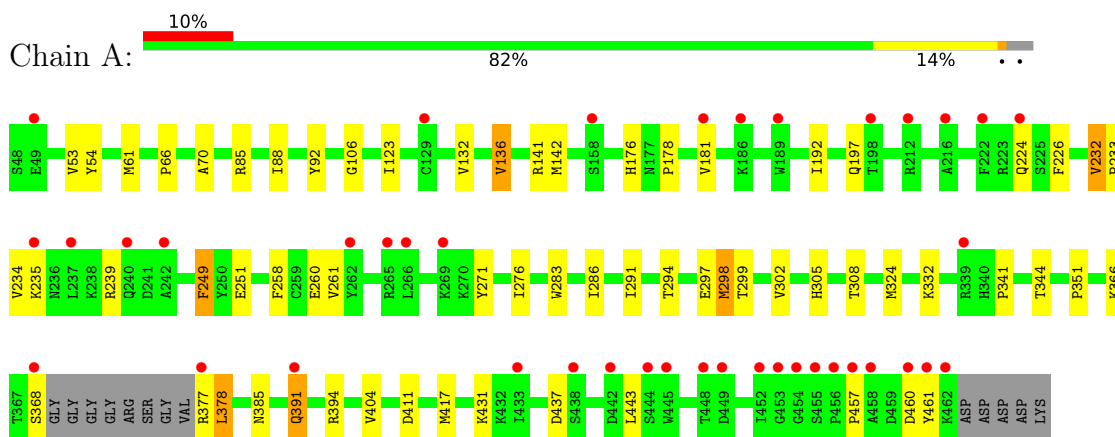
- Molecule 7 is water.

Mol	Chain	Residues	Atoms	ZeroOcc	AltConf
7	A	149	Total O 149 149	0	0
7	B	171	Total O 171 171	0	0

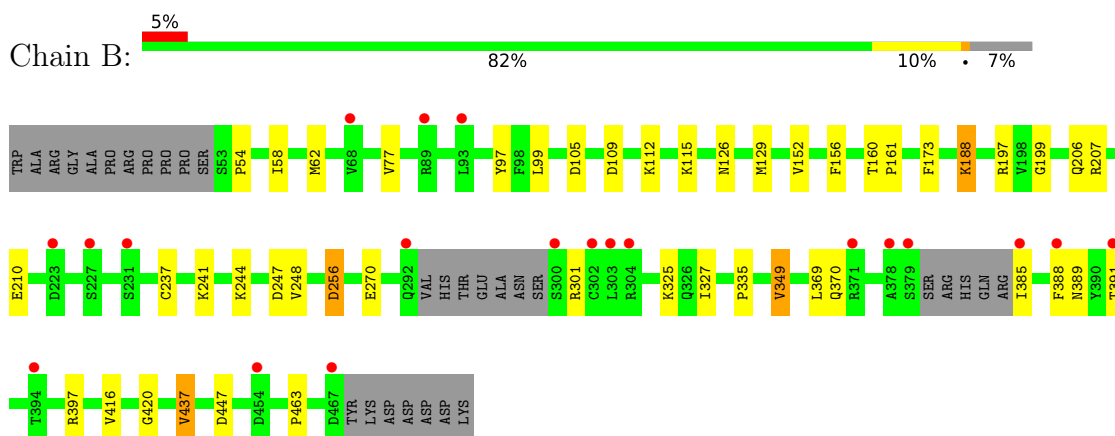
3 Residue-property plots [i](#)

These plots are drawn for all protein, RNA, DNA and oligosaccharide chains in the entry. The first graphic for a chain summarises the proportions of the various outlier classes displayed in the second graphic. The second graphic shows the sequence view annotated by issues in geometry and electron density. Residues are color-coded according to the number of geometric quality criteria for which they contain at least one outlier: green = 0, yellow = 1, orange = 2 and red = 3 or more. A red dot above a residue indicates a poor fit to the electron density ($RSRZ > 2$). Stretches of 2 or more consecutive residues without any outlier are shown as a green connector. Residues present in the sample, but not in the model, are shown in grey.

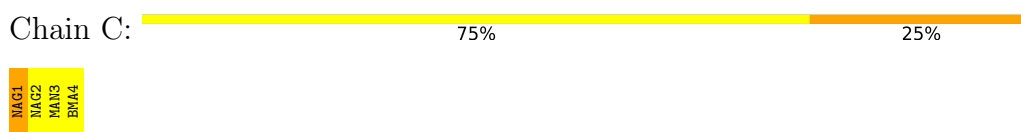
- Molecule 1: Gamma-aminobutyric acid type B receptor subunit 1



- Molecule 2: Gamma-aminobutyric acid type B receptor subunit 2



- Molecule 3: beta-D-mannopyranose-(1-3)-alpha-D-mannopyranose-(1-4)-2-acetamido-2-deoxy-beta-D-glucopyranose-(1-4)-2-acetamido-2-deoxy-beta-D-glucopyranose



- Molecule 4: 2-acetamido-2-deoxy-beta-D-glucopyranose-(1-4)-[alpha-L-fucopyranose-(1-6)]2-acetamido-2-deoxy-beta-D-glucopyranose

Chain D:  33% 67%

MAG1
MAG2
FUC3

4 Data and refinement statistics i

Property	Value	Source
Space group	P 1 21 1	Depositor
Cell constants a, b, c, α , β , γ	70.87Å 112.87Å 73.14Å 90.00° 97.85° 90.00°	Depositor
Resolution (Å)	32.94 – 2.25 32.94 – 2.25	Depositor EDS
% Data completeness (in resolution range)	96.2 (32.94-2.25) 96.1 (32.94-2.25)	Depositor EDS
R_{merge}	0.04	Depositor
R_{sym}	0.04	Depositor
$\langle I/\sigma(I) \rangle$ ¹	1.86 (at 2.25Å)	Xtrriage
Refinement program	BUSTER-TNT, BUSTER	Depositor
R, R_{free}	0.202 , 0.228 0.206 , 0.233	Depositor DCC
R_{free} test set	2625 reflections (4.85%)	wwPDB-VP
Wilson B-factor (Å ²)	52.4	Xtrriage
Anisotropy	0.384	Xtrriage
Bulk solvent k_{sol} (e/Å ³), B_{sol} (Å ²)	0.32 , 43.9	EDS
L-test for twinning ²	$\langle L \rangle = 0.48$, $\langle L^2 \rangle = 0.31$	Xtrriage
Estimated twinning fraction	0.022 for l,-k,h	Xtrriage
F_o, F_c correlation	0.95	EDS
Total number of atoms	6921	wwPDB-VP
Average B, all atoms (Å ²)	63.0	wwPDB-VP

Xtrriage's analysis on translational NCS is as follows: *The largest off-origin peak in the Patterson function is 3.89% of the height of the origin peak. No significant pseudotranslation is detected.*

¹Intensities estimated from amplitudes.

²Theoretical values of $\langle |L| \rangle$, $\langle L^2 \rangle$ for acentric reflections are 0.5, 0.333 respectively for untwinned datasets, and 0.375, 0.2 for perfectly twinned datasets.

5 Model quality [i](#)

5.1 Standard geometry [i](#)

Bond lengths and bond angles in the following residue types are not validated in this section: FUC, 381, MAN, NAG, BMA

The Z score for a bond length (or angle) is the number of standard deviations the observed value is removed from the expected value. A bond length (or angle) with $|Z| > 5$ is considered an outlier worth inspection. RMSZ is the root-mean-square of all Z scores of the bond lengths (or angles).

Mol	Chain	Bond lengths		Bond angles	
		RMSZ	# Z >5	RMSZ	# Z >5
1	A	0.85	3/3354 (0.1%)	1.33	21/4547 (0.5%)
2	B	0.87	1/3287 (0.0%)	1.31	9/4449 (0.2%)
All	All	0.86	4/6641 (0.1%)	1.32	30/8996 (0.3%)

All (4) bond length outliers are listed below:

Mol	Chain	Res	Type	Atoms	Z	Observed(Å)	Ideal(Å)
1	A	298	MET	SD-CE	-9.44	1.55	1.79
1	A	232	VAL	CA-CB	6.90	1.58	1.54
1	A	61	MET	SD-CE	-6.09	1.64	1.79
2	B	463	PRO	CA-C	5.98	1.55	1.51

The worst 5 of 30 bond angle outliers are listed below:

Mol	Chain	Res	Type	Atoms	Z	Observed(°)	Ideal(°)
1	A	232	VAL	N-CA-CB	9.20	117.63	110.45
1	A	460	ASP	CA-C-N	7.15	130.17	120.38
1	A	460	ASP	C-N-CA	7.15	130.17	120.38
1	A	461	TYR	N-CA-C	6.76	119.51	111.33
2	B	349	VAL	N-CA-CB	6.57	118.05	110.49

There are no chirality outliers.

There are no planarity outliers.

5.2 Too-close contacts [i](#)

In the following table, the Non-H and H(model) columns list the number of non-hydrogen atoms and hydrogen atoms in the chain respectively. The H(added) column lists the number of hydrogen atoms added and optimized by MolProbity. The Clashes column lists the number of clashes within

the asymmetric unit, whereas Symm-Clashes lists symmetry-related clashes.

Mol	Chain	Non-H	H(model)	H(added)	Clashes	Symm-Clashes
1	A	3271	0	3193	28	0
2	B	3214	0	3161	23	0
3	C	50	0	43	1	0
4	D	38	0	34	2	0
5	A	14	0	21	0	0
6	A	14	0	13	0	0
7	A	149	0	0	4	0
7	B	171	0	0	7	0
All	All	6921	0	6465	52	0

The all-atom clashscore is defined as the number of clashes found per 1000 atoms (including hydrogen atoms). The all-atom clashscore for this structure is 4.

The worst 5 of 52 close contacts within the same asymmetric unit are listed below, sorted by their clash magnitude.

Atom-1	Atom-2	Interatomic distance (Å)	Clash overlap (Å)
2:B:126:ASN:ND2	2:B:388:PHE:O	2.11	0.82
1:A:234:VAL:HG21	1:A:260:GLU:HB3	1.62	0.82
1:A:308:THR:OG1	7:A:745:HOH:O	2.08	0.70
7:B:743:HOH:O	4:D:1:NAG:H83	1.92	0.69
1:A:141:ARG:HH11	1:A:142:MET:HE3	1.61	0.64

There are no symmetry-related clashes.

5.3 Torsion angles [i](#)

5.3.1 Protein backbone [i](#)

In the following table, the Percentiles column shows the percent Ramachandran outliers of the chain as a percentile score with respect to all X-ray entries followed by that with respect to entries of similar resolution.

The Analysed column shows the number of residues for which the backbone conformation was analysed, and the total number of residues.

Mol	Chain	Analysed	Favoured	Allowed	Outliers	Percentiles	
1	A	403/420 (96%)	390 (97%)	12 (3%)	1 (0%)	43	50
2	B	397/433 (92%)	386 (97%)	11 (3%)	0	100	100
All	All	800/853 (94%)	776 (97%)	23 (3%)	1 (0%)	48	56

All (1) Ramachandran outliers are listed below:

Mol	Chain	Res	Type
1	A	457	PRO

5.3.2 Protein sidechains [i](#)

In the following table, the Percentiles column shows the percent sidechain outliers of the chain as a percentile score with respect to all X-ray entries followed by that with respect to entries of similar resolution.

The Analysed column shows the number of residues for which the sidechain conformation was analysed, and the total number of residues.

Mol	Chain	Analysed	Rotameric	Outliers	Percentiles	
1	A	354/362 (98%)	343 (97%)	11 (3%)	35	44
2	B	349/375 (93%)	341 (98%)	8 (2%)	44	55
All	All	703/737 (95%)	684 (97%)	19 (3%)	39	49

5 of 19 residues with a non-rotameric sidechain are listed below:

Mol	Chain	Res	Type
2	B	349	VAL
2	B	391	THR
2	B	437	VAL
2	B	385	ILE
1	A	391	GLN

Sometimes sidechains can be flipped to improve hydrogen bonding and reduce clashes. 5 of 16 such sidechains are listed below:

Mol	Chain	Res	Type
2	B	386	GLN
2	B	306	ASN
1	A	382	ASN
2	B	234	ASN
1	A	340	HIS

5.3.3 RNA [i](#)

There are no RNA molecules in this entry.

5.4 Non-standard residues in protein, DNA, RNA chains [i](#)

There are no non-standard protein/DNA/RNA residues in this entry.

5.5 Carbohydrates [i](#)

7 monosaccharides are modelled in this entry.

In the following table, the Counts columns list the number of bonds (or angles) for which Mogul statistics could be retrieved, the number of bonds (or angles) that are observed in the model and the number of bonds (or angles) that are defined in the Chemical Component Dictionary. The Link column lists molecule types, if any, to which the group is linked. The Z score for a bond length (or angle) is the number of standard deviations the observed value is removed from the expected value. A bond length (or angle) with $|Z| > 2$ is considered an outlier worth inspection. RMSZ is the root-mean-square of all Z scores of the bond lengths (or angles).

Mol	Type	Chain	Res	Link	Bond lengths			Bond angles		
					Counts	RMSZ	# Z > 2	Counts	RMSZ	# Z > 2
3	NAG	C	1	1,3	14,14,15	0.85	0	17,19,21	2.53	5 (29%)
3	NAG	C	2	3	14,14,15	0.75	0	17,19,21	2.36	5 (29%)
3	MAN	C	3	3	11,11,12	0.92	0	15,15,17	1.62	2 (13%)
3	BMA	C	4	3	11,11,12	1.64	2 (18%)	15,15,17	1.68	3 (20%)
4	NAG	D	1	2,4	14,14,15	1.16	1 (7%)	17,19,21	1.36	2 (11%)
4	NAG	D	2	4	14,14,15	0.85	0	17,19,21	1.66	4 (23%)
4	FUC	D	3	4	10,10,11	1.44	2 (20%)	14,14,16	1.35	2 (14%)

In the following table, the Chirals column lists the number of chiral outliers, the number of chiral centers analysed, the number of these observed in the model and the number defined in the Chemical Component Dictionary. Similar counts are reported in the Torsion and Rings columns. '-' means no outliers of that kind were identified.

Mol	Type	Chain	Res	Link	Chirals	Torsions	Rings
3	NAG	C	1	1,3	-	4/6/23/26	0/1/1/1
3	NAG	C	2	3	-	2/6/23/26	0/1/1/1
3	MAN	C	3	3	-	2/2/19/22	0/1/1/1
3	BMA	C	4	3	-	2/2/19/22	1/1/1/1
4	NAG	D	1	2,4	-	2/6/23/26	0/1/1/1
4	NAG	D	2	4	-	2/6/23/26	0/1/1/1
4	FUC	D	3	4	-	-	0/1/1/1

All (5) bond length outliers are listed below:

Mol	Chain	Res	Type	Atoms	Z	Observed(Å)	Ideal(Å)
3	C	4	BMA	C1-C2	3.12	1.59	1.52
3	C	4	BMA	C2-C3	2.78	1.56	1.52
4	D	3	FUC	C2-C3	2.46	1.56	1.52
4	D	3	FUC	C1-C2	2.39	1.57	1.52
4	D	1	NAG	C1-C2	2.25	1.55	1.52

The worst 5 of 23 bond angle outliers are listed below:

Mol	Chain	Res	Type	Atoms	Z	Observed(°)	Ideal(°)
3	C	1	NAG	C1-O5-C5	6.95	121.50	112.19
3	C	2	NAG	C1-O5-C5	5.00	118.89	112.19
3	C	2	NAG	C4-C3-C2	-4.82	103.95	111.02
4	D	2	NAG	C4-C3-C2	3.84	116.64	111.02
3	C	1	NAG	O5-C1-C2	3.74	117.07	111.29

There are no chirality outliers.

5 of 14 torsion outliers are listed below:

Mol	Chain	Res	Type	Atoms
3	C	1	NAG	O5-C5-C6-O6
3	C	4	BMA	O5-C5-C6-O6
3	C	2	NAG	C4-C5-C6-O6
3	C	2	NAG	O5-C5-C6-O6
3	C	1	NAG	C8-C7-N2-C2

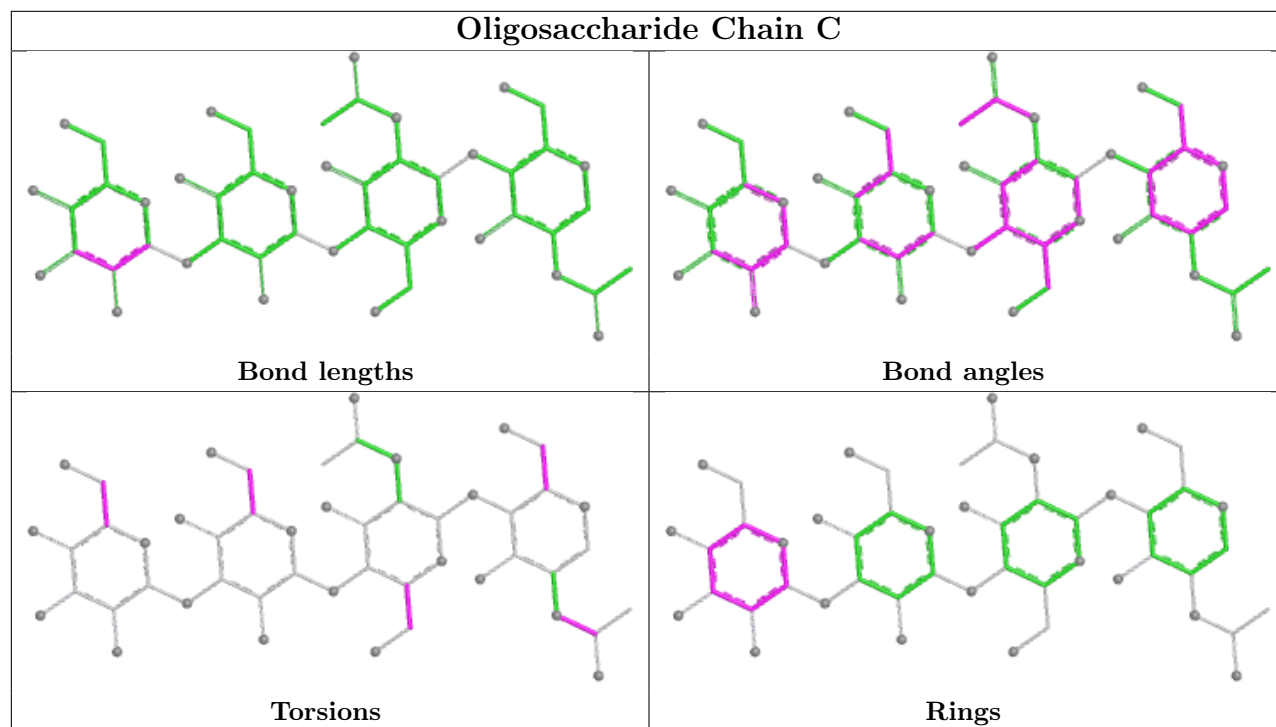
All (1) ring outliers are listed below:

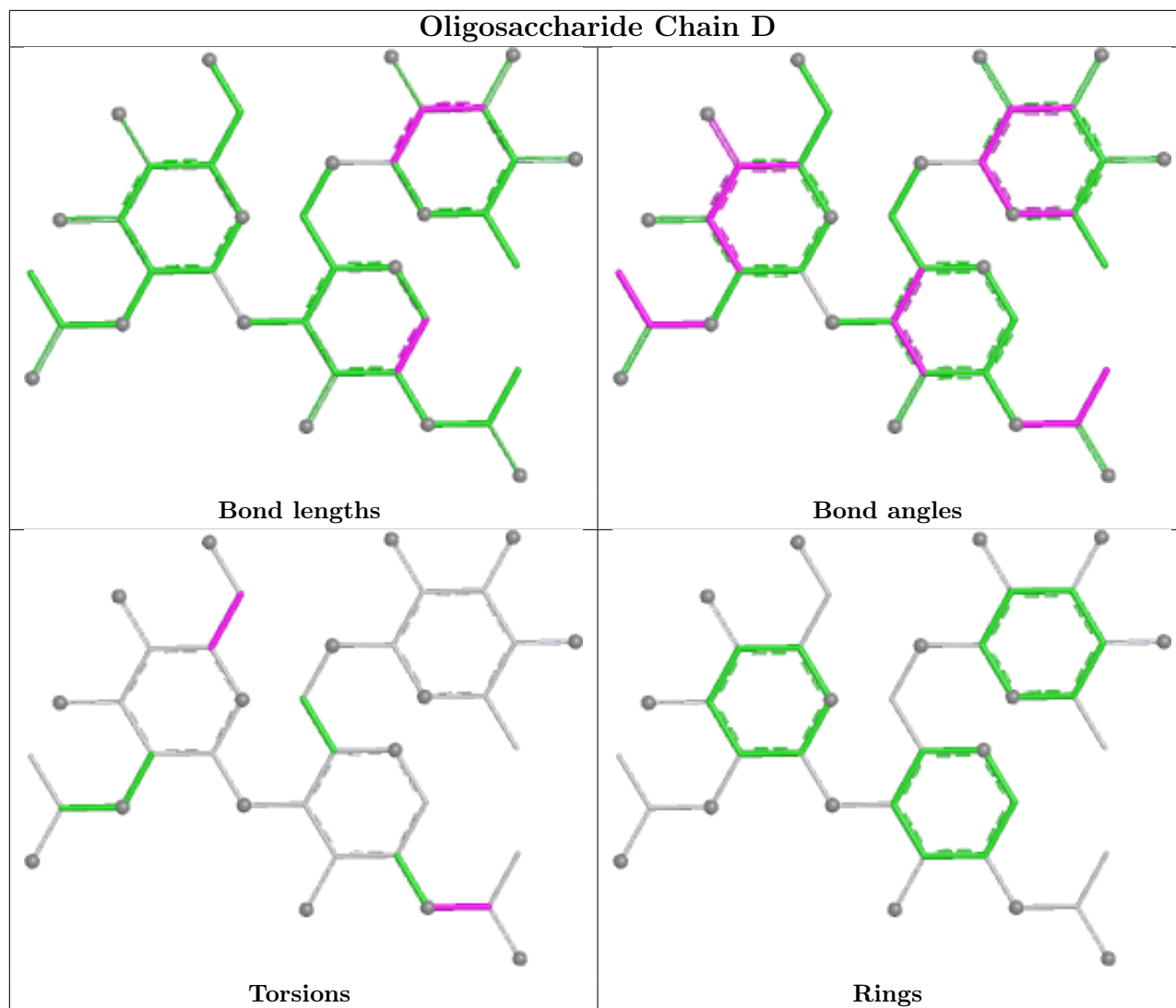
Mol	Chain	Res	Type	Atoms
3	C	4	BMA	C1-C2-C3-C4-C5-O5

3 monomers are involved in 3 short contacts:

Mol	Chain	Res	Type	Clashes	Symm-Clashes
3	C	1	NAG	1	0
4	D	3	FUC	1	0
4	D	1	NAG	1	0

The following is a two-dimensional graphical depiction of Mogul quality analysis of bond lengths, bond angles, torsion angles, and ring geometry for oligosaccharide.





5.6 Ligand geometry [i](#)

2 ligands are modelled in this entry.

In the following table, the Counts columns list the number of bonds (or angles) for which Mogul statistics could be retrieved, the number of bonds (or angles) that are observed in the model and the number of bonds (or angles) that are defined in the Chemical Component Dictionary. The Link column lists molecule types, if any, to which the group is linked. The Z score for a bond length (or angle) is the number of standard deviations the observed value is removed from the expected value. A bond length (or angle) with $|Z| > 2$ is considered an outlier worth inspection. RMSZ is the root-mean-square of all Z scores of the bond lengths (or angles).

Mol	Type	Chain	Res	Link	Bond lengths			Bond angles		
					Counts	RMSZ	# Z > 2	Counts	RMSZ	# Z > 2
5	381	A	501	-	10,14,14	1.24	1 (10%)	10,18,18	1.19	1 (10%)
6	NAG	A	502	1	14,14,15	1.26	1 (7%)	17,19,21	1.06	1 (5%)

In the following table, the Chirals column lists the number of chiral outliers, the number of chiral centers analysed, the number of these observed in the model and the number defined in the Chemical Component Dictionary. Similar counts are reported in the Torsion and Rings columns. '-' means no outliers of that kind were identified.

Mol	Type	Chain	Res	Link	Chirals	Torsions	Rings
5	381	A	501	-	-	0/10/18/18	0/1/1/1
6	NAG	A	502	1	-	2/6/23/26	0/1/1/1

All (2) bond length outliers are listed below:

Mol	Chain	Res	Type	Atoms	Z	Observed(Å)	Ideal(Å)
5	A	501	381	P-C4	3.60	1.83	1.79
6	A	502	NAG	O5-C1	3.08	1.48	1.43

All (2) bond angle outliers are listed below:

Mol	Chain	Res	Type	Atoms	Z	Observed(°)	Ideal(°)
6	A	502	NAG	C8-C7-N2	-2.28	112.34	116.12
5	A	501	381	C8-C9-C10	2.25	116.05	111.42

There are no chirality outliers.

All (2) torsion outliers are listed below:

Mol	Chain	Res	Type	Atoms
6	A	502	NAG	C4-C5-C6-O6
6	A	502	NAG	O5-C5-C6-O6

There are no ring outliers.

No monomer is involved in short contacts.

5.7 Other polymers [i](#)

There are no such residues in this entry.

5.8 Polymer linkage issues [i](#)

There are no chain breaks in this entry.

6 Fit of model and data [i](#)

6.1 Protein, DNA and RNA chains [i](#)

In the following table, the column labelled '#RSRZ > 2' contains the number (and percentage) of RSRZ outliers, followed by percent RSRZ outliers for the chain as percentile scores relative to all X-ray entries and entries of similar resolution. The OWAB column contains the minimum, median, 95th percentile and maximum values of the occupancy-weighted average B-factor per residue. The column labelled 'Q < 0.9' lists the number of (and percentage) of residues with an average occupancy less than 0.9.

Mol	Chain	Analysed	<RSRZ>	#RSRZ>2	OWAB(Å ²)	Q<0.9
1	A	407/420 (96%)	0.59	40 (9%) 13 12	39, 61, 100, 119	0
2	B	403/433 (93%)	0.32	20 (4%) 34 33	37, 55, 86, 117	0
All	All	810/853 (94%)	0.45	60 (7%) 20 19	37, 58, 96, 119	0

The worst 5 of 60 RSRZ outliers are listed below:

Mol	Chain	Res	Type	RSRZ
1	A	368	SER	5.9
1	A	129	CYS	4.9
2	B	388	PHE	4.2
2	B	385	ILE	4.1
1	A	452	ILE	4.0

6.2 Non-standard residues in protein, DNA, RNA chains [i](#)

There are no non-standard protein/DNA/RNA residues in this entry.

6.3 Carbohydrates [i](#)

In the following table, the Atoms column lists the number of modelled atoms in the group and the number defined in the chemical component dictionary. The B-factors column lists the minimum, median, 95th percentile and maximum values of B factors of atoms in the group. The column labelled 'Q < 0.9' lists the number of atoms with occupancy less than 0.9.

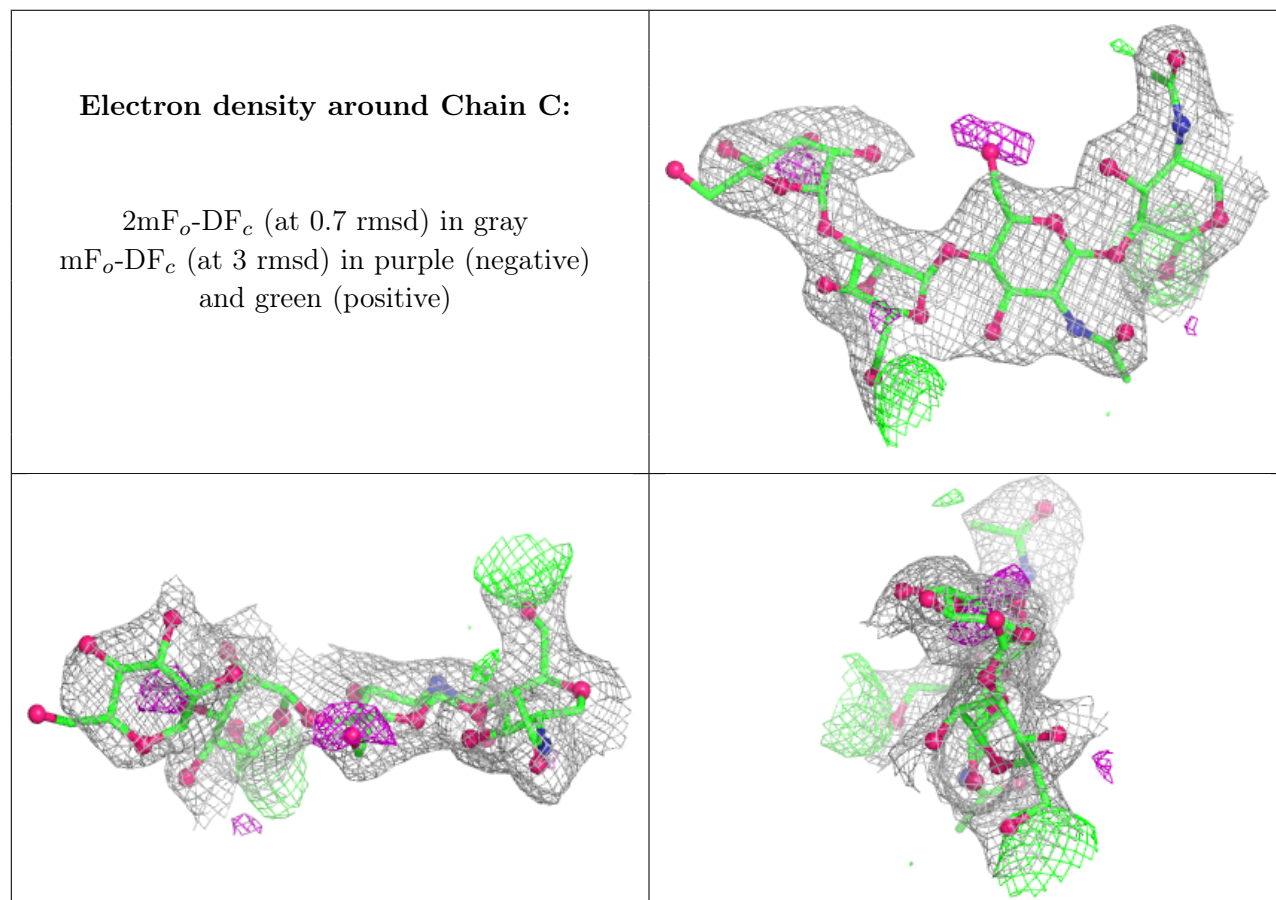
Mol	Type	Chain	Res	Atoms	RSCC	RSR	B-factors(Å ²)	Q<0.9
3	NAG	C	1	14/15	0.73	0.14	80,84,87,90	0
3	MAN	C	3	11/12	0.75	0.16	95,98,100,100	0
4	NAG	D	2	14/15	0.78	0.12	86,90,93,93	0
3	BMA	C	4	11/12	0.79	0.14	102,105,108,109	0
3	NAG	C	2	14/15	0.82	0.15	86,90,93,93	0

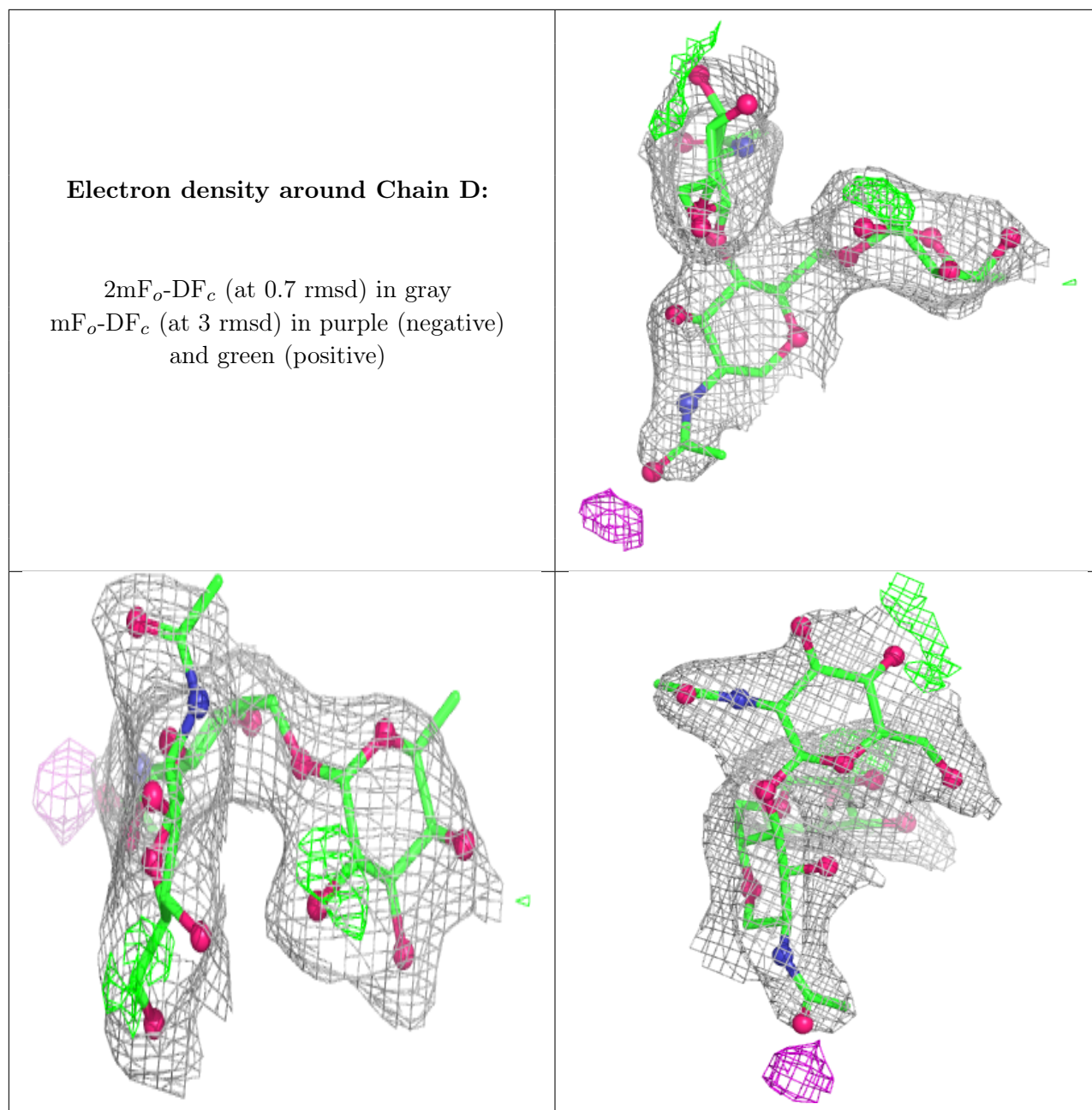
Continued on next page...

Continued from previous page...

Mol	Type	Chain	Res	Atoms	RSCC	RSR	B-factors(\AA^2)	Q<0.9
4	FUC	D	3	10/11	0.86	0.17	82,83,84,85	0
4	NAG	D	1	14/15	0.87	0.13	76,80,83,83	0

The following is a graphical depiction of the model fit to experimental electron density for oligosaccharide. Each fit is shown from different orientation to approximate a three-dimensional view.





6.4 Ligands [i](#)

In the following table, the Atoms column lists the number of modelled atoms in the group and the number defined in the chemical component dictionary. The B-factors column lists the minimum, median, 95th percentile and maximum values of B factors of atoms in the group. The column labelled 'Q<0.9' lists the number of atoms with occupancy less than 0.9.

Mol	Type	Chain	Res	Atoms	RSCC	RSR	B-factors(Å ²)	Q<0.9
6	NAG	A	502	14/15	0.80	0.14	81,85,88,88	0
5	381	A	501	14/14	0.98	0.06	35,45,56,56	0

6.5 Other polymers [i](#)

There are no such residues in this entry.