



wwPDB X-ray Structure Validation Summary Report ⓘ

Mar 10, 2026 – 05:46 AM UTC

PDB ID : 5MWP / pdb_00005mwp
Title : The structure of MR in complex with AZD9977.
Authors : Edman, K.; Aagaard, A.; Backstrom, S.
Deposited on : 2017-01-19
Resolution : 1.82 Å(reported)

This is a wwPDB X-ray Structure Validation Summary Report for a publicly released PDB entry.

We welcome your comments at validation@mail.wwpdb.org

A user guide is available at

<https://www.wwpdb.org/validation/2017/XrayValidationReportHelp>

with specific help available everywhere you see the ⓘ symbol.

The types of validation reports are described at

<http://www.wwpdb.org/validation/2017/FAQs#types>.

The following versions of software and data (see [references ⓘ](#)) were used in the production of this report:

MolProbity : 4-5-2 with Phenix2.0
Mogul : 2022.3.0, CSD as543be (2022)
Xtrriage (Phenix) : 2.0
EDS : 3.0
Buster-report : wwPDB partial adaption of 1.1.7 (2018)
Percentile statistics : 20250101.v01 (using entries in the PDB archive January 1st 2025)
CCP4 : 9.0.010 (Gargrove)
Density-Fitness : 1.0.12
Ideal geometry (proteins) : Engh & Huber (2001)
Ideal geometry (DNA, RNA) : Parkinson et al. (1996)
Validation Pipeline (wwPDB-VP) : 2.49

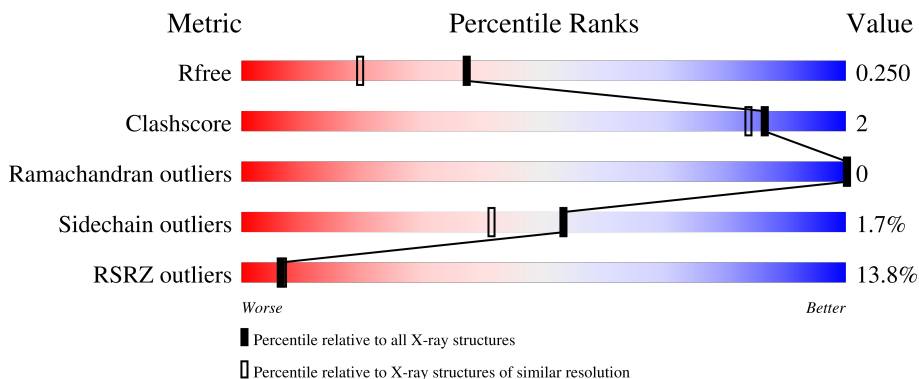
1 Overall quality at a glance

The following experimental techniques were used to determine the structure:

X-RAY DIFFRACTION

The reported resolution of this entry is 1.82 Å.

Percentile scores (ranging between 0-100) for global validation metrics of the entry are shown in the following graphic. The table shows the number of entries on which the scores are based.



Metric	Whole archive (#Entries)	Similar resolution (#Entries, resolution range(Å))
R_{free}	180053	1112 (1.82-1.82)
Clashscore	190562	1148 (1.82-1.82)
Ramachandran outliers	187476	1140 (1.82-1.82)
Sidechain outliers	187428	1140 (1.82-1.82)
RSRZ outliers	180081	1112 (1.82-1.82)

The table below summarises the geometric issues observed across the polymeric chains and their fit to the electron density. The red, orange, yellow and green segments of the lower bar indicate the fraction of residues that contain outliers for ≥ 3 , 2, 1 and 0 types of geometric quality criteria respectively. A grey segment represents the fraction of residues that are not modelled. The numeric value for each fraction is indicated below the corresponding segment, with a dot representing fractions $\leq 5\%$. The upper red bar (where present) indicates the fraction of residues that have poor fit to the electron density. The numeric value is given above the bar.

Mol	Chain	Length	Quality of chain
1	A	305	
2	B	15	

2 Entry composition [i](#)

There are 4 unique types of molecules in this entry. The entry contains 2296 atoms, of which 0 are hydrogens and 0 are deuteriums.

In the tables below, the ZeroOcc column contains the number of atoms modelled with zero occupancy, the AltConf column contains the number of residues with at least one atom in alternate conformation and the Trace column contains the number of residues modelled with at most 2 atoms.

- Molecule 1 is a protein called Mineralocorticoid receptor.

Mol	Chain	Residues	Atoms					ZeroOcc	AltConf	Trace
			Total	C	N	O	S			
1	A	243	2053	1331	333	376	13	0	7	0

There are 57 discrepancies between the modelled and reference sequences:

Chain	Residue	Modelled	Actual	Comment	Reference
A	713	MET	-	initiating methionine	UNP P08235
A	714	HIS	-	expression tag	UNP P08235
A	715	ASN	-	expression tag	UNP P08235
A	716	HIS	-	expression tag	UNP P08235
A	717	ASN	-	expression tag	UNP P08235
A	718	HIS	-	expression tag	UNP P08235
A	719	ASN	-	expression tag	UNP P08235
A	720	HIS	-	expression tag	UNP P08235
A	721	ASN	-	expression tag	UNP P08235
A	722	HIS	-	expression tag	UNP P08235
A	723	ASN	-	expression tag	UNP P08235
A	724	HIS	-	expression tag	UNP P08235
A	725	ASN	-	expression tag	UNP P08235
A	726	GLY	-	expression tag	UNP P08235
A	727	GLY	-	expression tag	UNP P08235
A	728	GLU	-	expression tag	UNP P08235
A	729	ASN	-	expression tag	UNP P08235
A	730	LEU	-	expression tag	UNP P08235
A	731	TYR	-	expression tag	UNP P08235
A	732	PHE	-	expression tag	UNP P08235
A	733	GLN	-	expression tag	UNP P08235
A	734	GLY	-	expression tag	UNP P08235
A	808	SER	CYS	engineered mutation	UNP P08235
A	910	SER	CYS	engineered mutation	UNP P08235
A	985	GLY	-	expression tag	UNP P08235
A	986	GLY	-	expression tag	UNP P08235
A	987	SER	-	expression tag	UNP P08235

Continued on next page...

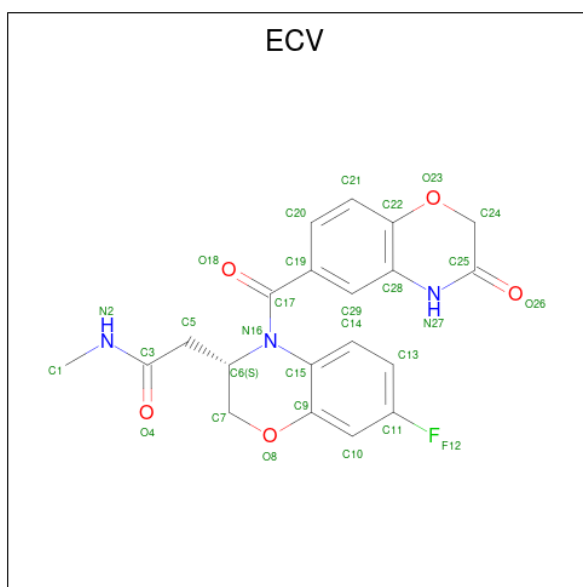
Continued from previous page...

Chain	Residue	Modelled	Actual	Comment	Reference
A	988	LEU	-	expression tag	UNP P08235
A	989	VAL	-	expression tag	UNP P08235
A	990	PRO	-	expression tag	UNP P08235
A	991	ARG	-	expression tag	UNP P08235
A	992	GLY	-	expression tag	UNP P08235
A	993	SER	-	expression tag	UNP P08235
A	994	GLY	-	expression tag	UNP P08235
A	995	GLY	-	expression tag	UNP P08235
A	996	GLY	-	expression tag	UNP P08235
A	997	SER	-	expression tag	UNP P08235
A	998	GLY	-	expression tag	UNP P08235
A	999	GLY	-	expression tag	UNP P08235
A	1000	SER	-	expression tag	UNP P08235
A	1001	GLY	-	expression tag	UNP P08235
A	1002	GLY	-	expression tag	UNP P08235
A	1003	PRO	-	expression tag	UNP P08235
A	1004	GLN	-	expression tag	UNP P08235
A	1005	ALA	-	expression tag	UNP P08235
A	1006	GLN	-	expression tag	UNP P08235
A	1007	GLN	-	expression tag	UNP P08235
A	1008	LYS	-	expression tag	UNP P08235
A	1009	SER	-	expression tag	UNP P08235
A	1010	LEU	-	expression tag	UNP P08235
A	1011	LEU	-	expression tag	UNP P08235
A	1012	GLN	-	expression tag	UNP P08235
A	1013	GLN	-	expression tag	UNP P08235
A	1014	LEU	-	expression tag	UNP P08235
A	1015	LEU	-	expression tag	UNP P08235
A	1016	THR	-	expression tag	UNP P08235
A	1017	GLU	-	expression tag	UNP P08235

- Molecule 2 is a protein called NCOA1 peptide.

Mol	Chain	Residues	Atoms				ZeroOcc	AltConf	Trace
			Total	C	N	O			
2	B	10	82	52	13	17	0	0	0

- Molecule 3 is 2-[(3 {S})-7-fluoranyl-4-[(3-oxidanylidene-4 {H})-1,4-benzoxazin-6-yl)carbonyl]-2,3-dihydro-1,4-benzoxazin-3-yl]- {N}-methyl-ethanamide (CCD ID: ECV) (formula: C₂₀H₁₈FN₃O₅).



Mol	Chain	Residues	Atoms					ZeroOcc	AltConf
			Total	C	F	N	O		
3	A	1	29	20	1	3	5	0	0

- Molecule 4 is water.

Mol	Chain	Residues	Atoms		ZeroOcc	AltConf
			Total	O		
4	A	130	130	130	0	0
4	B	2	2	2	0	0

4 Data and refinement statistics

Property	Value	Source
Space group	P 21 21 21	Depositor
Cell constants a, b, c, α , β , γ	48.60Å 78.12Å 79.12Å 90.00° 90.00° 90.00°	Depositor
Resolution (Å)	41.41 – 1.82 41.41 – 1.82	Depositor EDS
% Data completeness (in resolution range)	98.5 (41.41-1.82) 98.6 (41.41-1.82)	Depositor EDS
R_{merge}	(Not available)	Depositor
R_{sym}	(Not available)	Depositor
$\langle I/\sigma(I) \rangle$ ¹	2.47 (at 1.82Å)	Xtrriage
Refinement program	BUSTER 2.11.6	Depositor
R, R_{free}	0.210 , 0.242 0.215 , 0.250	Depositor DCC
R_{free} test set	1376 reflections (4.97%)	wwPDB-VP
Wilson B-factor (Å ²)	15.0	Xtrriage
Anisotropy	0.562	Xtrriage
Bulk solvent k_{sol} (e/Å ³), B_{sol} (Å ²)	0.36 , 42.5	EDS
L-test for twinning ²	$\langle L \rangle = 0.47$, $\langle L^2 \rangle = 0.30$	Xtrriage
Estimated twinning fraction	0.028 for -h,l,k	Xtrriage
F_o, F_c correlation	0.93	EDS
Total number of atoms	2296	wwPDB-VP
Average B, all atoms (Å ²)	21.0	wwPDB-VP

Xtrriage's analysis on translational NCS is as follows: *The largest off-origin peak in the Patterson function is 7.16% of the height of the origin peak. No significant pseudotranslation is detected.*

¹Intensities estimated from amplitudes.

²Theoretical values of $\langle |L| \rangle$, $\langle L^2 \rangle$ for acentric reflections are 0.5, 0.333 respectively for untwinned datasets, and 0.375, 0.2 for perfectly twinned datasets.

5 Model quality

5.1 Standard geometry

Bond lengths and bond angles in the following residue types are not validated in this section: ECV

The Z score for a bond length (or angle) is the number of standard deviations the observed value is removed from the expected value. A bond length (or angle) with $|Z| > 5$ is considered an outlier worth inspection. RMSZ is the root-mean-square of all Z scores of the bond lengths (or angles).

Mol	Chain	Bond lengths		Bond angles	
		RMSZ	# Z >5	RMSZ	# Z >5
1	A	0.77	0/2101	1.13	0/2834
2	B	0.74	0/81	1.17	0/106
All	All	0.77	0/2182	1.14	0/2940

There are no bond length outliers.

There are no bond angle outliers.

There are no chirality outliers.

There are no planarity outliers.

5.2 Too-close contacts

In the following table, the Non-H and H(model) columns list the number of non-hydrogen atoms and hydrogen atoms in the chain respectively. The H(added) column lists the number of hydrogen atoms added and optimized by MolProbity. The Clashes column lists the number of clashes within the asymmetric unit, whereas Symm-Clashes lists symmetry-related clashes.

Mol	Chain	Non-H	H(model)	H(added)	Clashes	Symm-Clashes
1	A	2053	0	2050	9	0
2	B	82	0	90	1	0
3	A	29	0	0	0	0
4	A	130	0	0	0	0
4	B	2	0	0	0	0
All	All	2296	0	2140	9	0

The all-atom clashscore is defined as the number of clashes found per 1000 atoms (including hydrogen atoms). The all-atom clashscore for this structure is 2.

The worst 5 of 9 close contacts within the same asymmetric unit are listed below, sorted by their clash magnitude.

Atom-1	Atom-2	Interatomic distance (Å)	Clash overlap (Å)
1:A:777:MET:HE1	1:A:806:TRP:HB2	1.76	0.66
1:A:799:ILE:HG23	2:B:1435:LEU:HD23	1.79	0.65
1:A:777:MET:CE	1:A:806:TRP:HB2	2.31	0.59
1:A:739:VAL:HG11	1:A:906:MET:HE3	1.87	0.56
1:A:919:GLN:H	1:A:919:GLN:HE21	1.60	0.49

There are no symmetry-related clashes.

5.3 Torsion angles [i](#)

5.3.1 Protein backbone [i](#)

In the following table, the Percentiles column shows the percent Ramachandran outliers of the chain as a percentile score with respect to all X-ray entries followed by that with respect to entries of similar resolution.

The Analysed column shows the number of residues for which the backbone conformation was analysed, and the total number of residues.

Mol	Chain	Analysed	Favoured	Allowed	Outliers	Percentiles	
1	A	244/305 (80%)	242 (99%)	2 (1%)	0	100	100
2	B	8/15 (53%)	8 (100%)	0	0	100	100
All	All	252/320 (79%)	250 (99%)	2 (1%)	0	100	100

There are no Ramachandran outliers to report.

5.3.2 Protein sidechains [i](#)

In the following table, the Percentiles column shows the percent sidechain outliers of the chain as a percentile score with respect to all X-ray entries followed by that with respect to entries of similar resolution.

The Analysed column shows the number of residues for which the sidechain conformation was analysed, and the total number of residues.

Mol	Chain	Analysed	Rotameric	Outliers	Percentiles	
1	A	232/272 (85%)	228 (98%)	4 (2%)	53	41
2	B	10/14 (71%)	10 (100%)	0	100	100
All	All	242/286 (85%)	238 (98%)	4 (2%)	53	41

All (4) residues with a non-rotameric sidechain are listed below:

Mol	Chain	Res	Type
1	A	749	ILE
1	A	919	GLN
1	A	948	GLU
1	A	959	MET

Sometimes sidechains can be flipped to improve hydrogen bonding and reduce clashes. All (3) such sidechains are listed below:

Mol	Chain	Res	Type
1	A	850	GLN
1	A	919	GLN
1	A	923	GLN

5.3.3 RNA [i](#)

There are no RNA molecules in this entry.

5.4 Non-standard residues in protein, DNA, RNA chains [i](#)

There are no non-standard protein/DNA/RNA residues in this entry.

5.5 Carbohydrates [i](#)

There are no oligosaccharides in this entry.

5.6 Ligand geometry [i](#)

1 ligand is modelled in this entry.

In the following table, the Counts columns list the number of bonds (or angles) for which Mogul statistics could be retrieved, the number of bonds (or angles) that are observed in the model and the number of bonds (or angles) that are defined in the Chemical Component Dictionary. The Link column lists molecule types, if any, to which the group is linked. The Z score for a bond length (or angle) is the number of standard deviations the observed value is removed from the expected value. A bond length (or angle) with $|Z| > 2$ is considered an outlier worth inspection. RMSZ is the root-mean-square of all Z scores of the bond lengths (or angles).

Mol	Type	Chain	Res	Link	Bond lengths			Bond angles		
					Counts	RMSZ	$\# Z > 2$	Counts	RMSZ	$\# Z > 2$
3	ECV	A	1101	-	31,32,32	0.97	3 (9%)	40,46,46	1.49	8 (20%)

In the following table, the Chirals column lists the number of chiral outliers, the number of chiral centers analysed, the number of these observed in the model and the number defined in the Chemical Component Dictionary. Similar counts are reported in the Torsion and Rings columns. '-' means no outliers of that kind were identified.

Mol	Type	Chain	Res	Link	Chirals	Torsions	Rings
3	ECV	A	1101	-	-	5/14/36/36	0/4/4/4

All (3) bond length outliers are listed below:

Mol	Chain	Res	Type	Atoms	Z	Observed(Å)	Ideal(Å)
3	A	1101	ECV	O8-C9	2.85	1.40	1.37
3	A	1101	ECV	C17-N16	2.67	1.41	1.37
3	A	1101	ECV	C25-N27	2.18	1.37	1.35

The worst 5 of 8 bond angle outliers are listed below:

Mol	Chain	Res	Type	Atoms	Z	Observed(°)	Ideal(°)
3	A	1101	ECV	C19-C17-N16	4.19	123.91	118.36
3	A	1101	ECV	O26-C25-N27	3.37	124.96	121.39
3	A	1101	ECV	O18-C17-C19	-2.96	114.43	120.29
3	A	1101	ECV	O23-C22-C28	-2.44	119.07	120.74
3	A	1101	ECV	C29-C19-C17	-2.29	115.04	120.13

There are no chirality outliers.

All (5) torsion outliers are listed below:

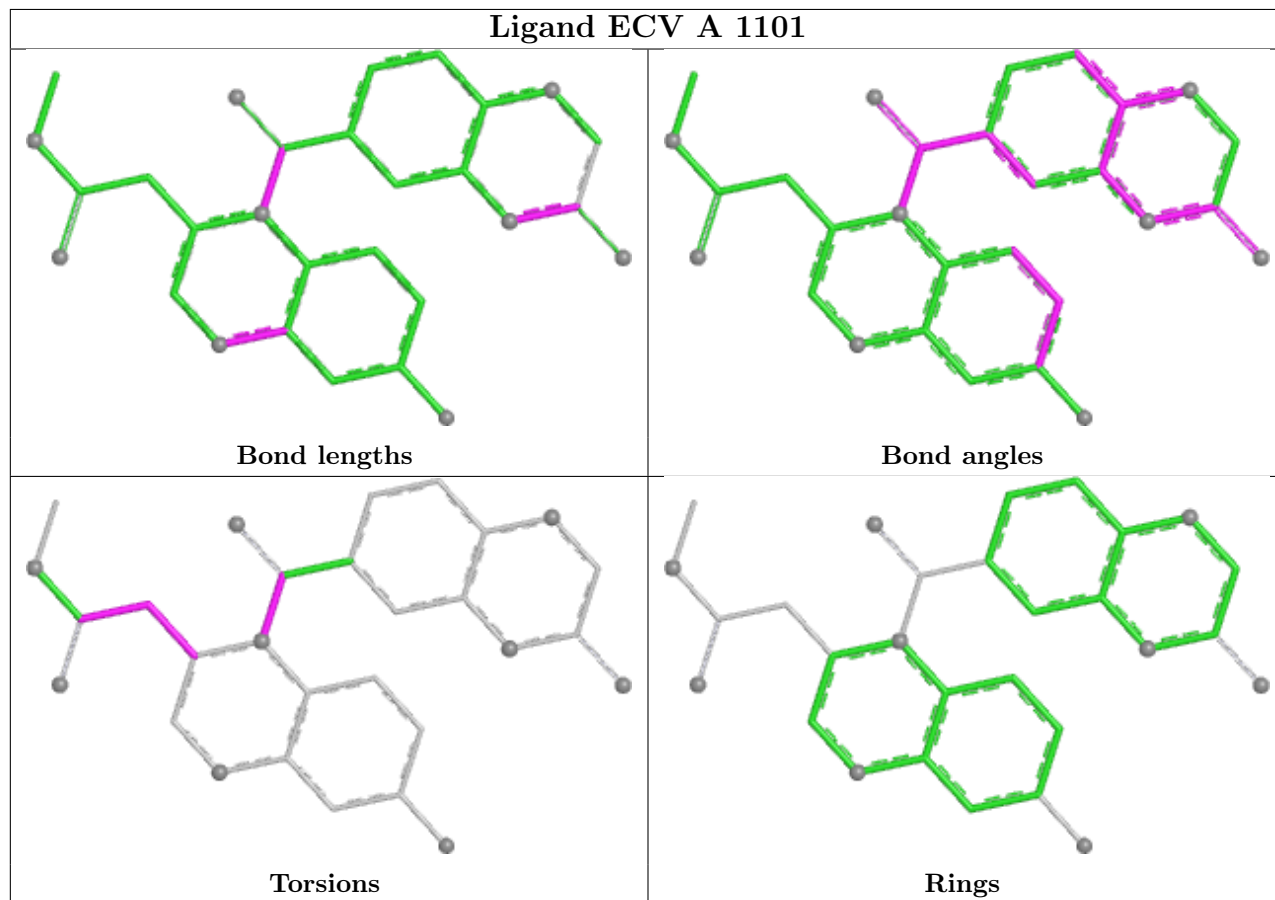
Mol	Chain	Res	Type	Atoms
3	A	1101	ECV	C3-C5-C6-C7
3	A	1101	ECV	C3-C5-C6-N16
3	A	1101	ECV	O18-C17-N16-C6
3	A	1101	ECV	O4-C3-C5-C6
3	A	1101	ECV	N2-C3-C5-C6

There are no ring outliers.

No monomer is involved in short contacts.

The following is a two-dimensional graphical depiction of Mogul quality analysis of bond lengths, bond angles, torsion angles, and ring geometry for all instances of the Ligand of Interest. In addition, ligands with molecular weight > 250 and outliers as shown on the validation Tables will also be included. For torsion angles, if less than 5% of the Mogul distribution of torsion angles is within 10 degrees of the torsion angle in question, then that torsion angle is considered an outlier. Any bond that is central to one or more torsion angles identified as an outlier by Mogul will be highlighted in the graph. For rings, the root-mean-square deviation (RMSD) between the ring

in question and similar rings identified by Mogul is calculated over all ring torsion angles. If the average RMSD is greater than 60 degrees and the minimal RMSD between the ring in question and any Mogul-identified rings is also greater than 60 degrees, then that ring is considered an outlier. The outliers are highlighted in purple. The color gray indicates Mogul did not find sufficient equivalents in the CSD to analyse the geometry.



5.7 Other polymers [\(i\)](#)

There are no such residues in this entry.

5.8 Polymer linkage issues [\(i\)](#)

There are no chain breaks in this entry.

6 Fit of model and data [i](#)

6.1 Protein, DNA and RNA chains [i](#)

In the following table, the column labelled ‘#RSRZ> 2’ contains the number (and percentage) of RSRZ outliers, followed by percent RSRZ outliers for the chain as percentile scores relative to all X-ray entries and entries of similar resolution. The OWAB column contains the minimum, median, 95th percentile and maximum values of the occupancy-weighted average B-factor per residue. The column labelled ‘Q< 0.9’ lists the number of (and percentage) of residues with an average occupancy less than 0.9.

Mol	Chain	Analysed	<RSRZ>	#RSRZ>2	OWAB(Å ²)	Q<0.9
1	A	243/305 (79%)	0.66	33 (13%) 7 7	4, 17, 43, 78	7 (2%)
2	B	10/15 (66%)	1.71	2 (20%) 3 3	19, 24, 45, 57	0
All	All	253/320 (79%)	0.70	35 (13%) 6 7	4, 17, 44, 78	7 (2%)

The worst 5 of 35 RSRZ outliers are listed below:

Mol	Chain	Res	Type	RSRZ
1	A	909	LYS	7.2
1	A	951	ALA	6.4
1	A	950	HIS	6.1
1	A	984	LYS	5.8
1	A	952	LEU	5.8

6.2 Non-standard residues in protein, DNA, RNA chains [i](#)

There are no non-standard protein/DNA/RNA residues in this entry.

6.3 Carbohydrates [i](#)

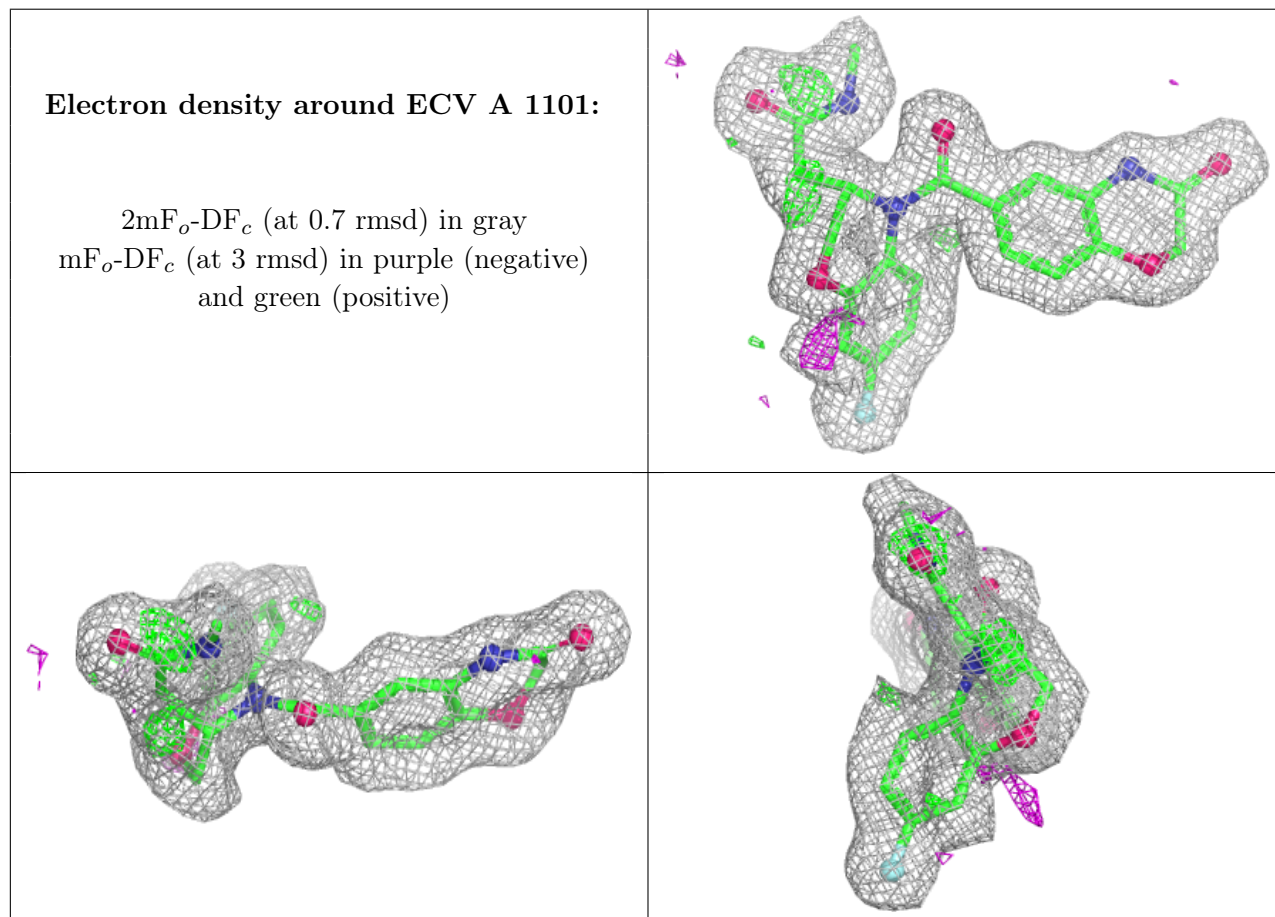
There are no oligosaccharides in this entry.

6.4 Ligands [i](#)

In the following table, the Atoms column lists the number of modelled atoms in the group and the number defined in the chemical component dictionary. The B-factors column lists the minimum, median, 95th percentile and maximum values of B factors of atoms in the group. The column labelled ‘Q< 0.9’ lists the number of atoms with occupancy less than 0.9.

Mol	Type	Chain	Res	Atoms	RSCC	RSR	B-factors(\AA^2)	Q<0.9
3	ECV	A	1101	29/29	0.93	0.08	7,11,15,17	0

The following is a graphical depiction of the model fit to experimental electron density of all instances of the Ligand of Interest. In addition, ligands with molecular weight > 250 and outliers as shown on the geometry validation Tables will also be included. Each fit is shown from different orientation to approximate a three-dimensional view.



6.5 Other polymers [i](#)

There are no such residues in this entry.